

**TIMBER SALE MAP**

This information provided by authority of Part 525, 1994 PA 451, as amended.

Sale Number

54-006-25

Date

04/24/2025

Forest Management Unit

Atlanta Mgt Unit

County

Cheboygan

Mapped By: T. Kubitsky

Cruised By:

Scale

1:10,000

Page

2

Of

2

Township

36N

Range

01E

Section(s) and

Subdivision(s) Sec. 1 E1/2NW,NWNE,S1/2NE,NESW,NESE; Sec. 11 NENW,NWNE;

Cover Type

A = Aspen	J = Jack Pine	O = Oak	U = Upland Brush
B = Paper Birch	K = Rock	P = Lowland Poplar	UM = Upland Mix Forest
C = Cedar	L = Lowland Brush	Q = Mixed Swamp Conifer	V = Bog or Marsh
D = Treed Bog	LM = Lowland Mix Forest	R = Red Pine	W = White Pine
E = Swamp Hardwoods	M = Maple, Beech, Birch	S = Black Spruce	X = Non Stocked
F = Spruce/Fir	MC = Mixed Conifer	T = Tamarack	Y = Sand
G = Grass	MD = Mixed Deciduous		Z = Water
H = Hemlock	N = Marsh		

Density

0 = Non Stocked	5 = Pole Timber Medium
1 = Seedling Sapling Poor	6 = Pole Timber Well
2 = Seedling Sapling Medium	7 = Saw Timber Poor
3 = Seedling Sapling Well	8 = Saw Timber Medium
4 = Pole Timber Poor	9 = Saw Timber Well

Payment Unit Acres

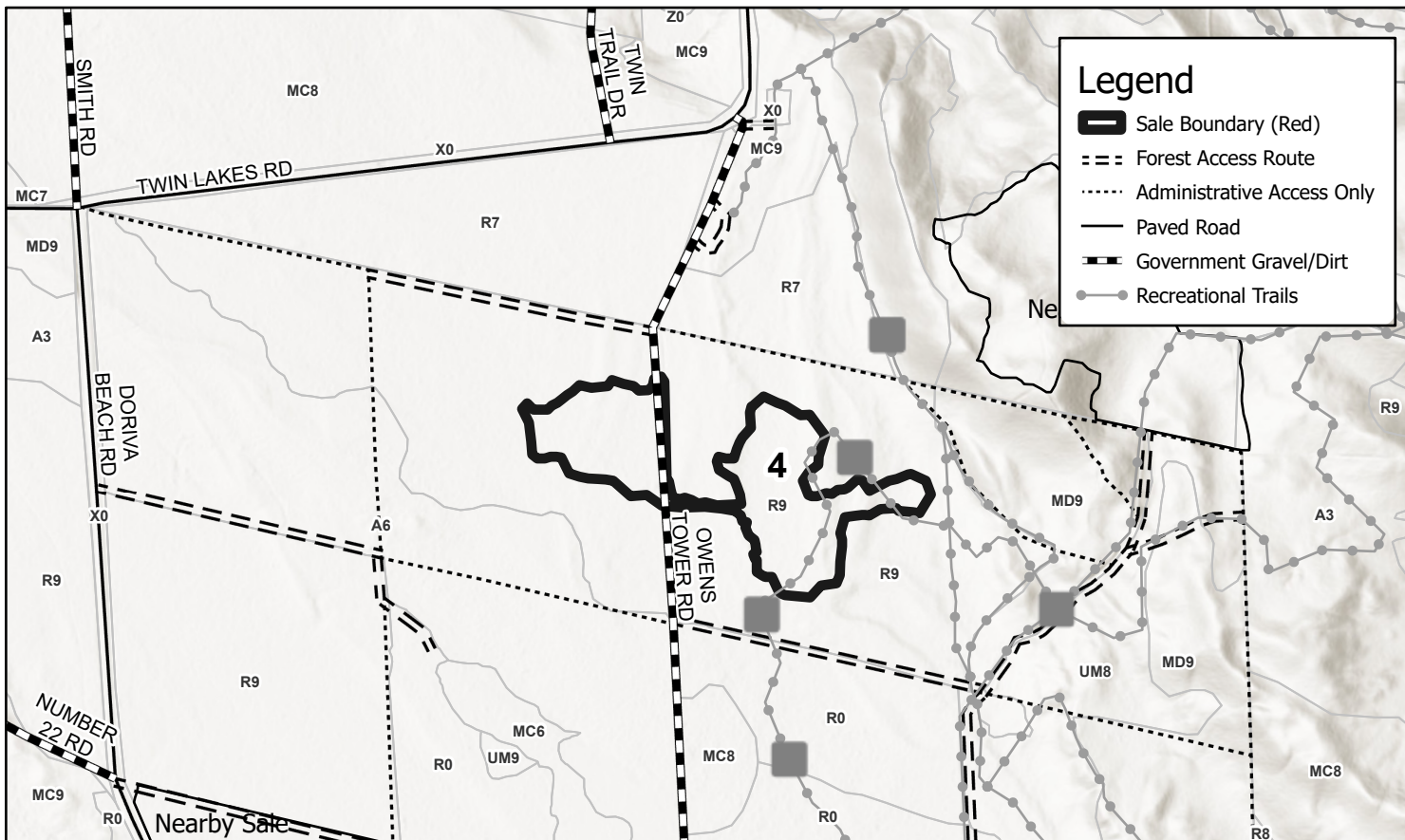
1	20.4
2	50.9
3	58.9
4	14.6

Use QR Code to
open Map in App**Ice-d Down RP Salvage****144.7 Acres**

Map Note:

Best access will be from the North from Twin
Lakes Rd. Landing location will be in the narrow
spot in the middle of the unit.**Legend**

- Sale Boundary (Red)
- Forest Access Route
- Administrative Access Only
- Paved Road
- Government Gravel/Dirt
- Recreational Trails



0 0.25 0.5 1 Miles