

**TIMBER SALE MAP**

This information provided by authority of Part 525, 1994 PA 451, as amended.

Sale Number

11-007-25

Date

06/27/2025

Forest Management Unit

Baraga Mgt Unit

County

Baraga

Mapped By: Ryan Mattila

Cruised By: Baraga Staff

Scale

1:15,840

Page

1

Of

1Township
50NRange
34WSection(s) and
Subdivision(s)

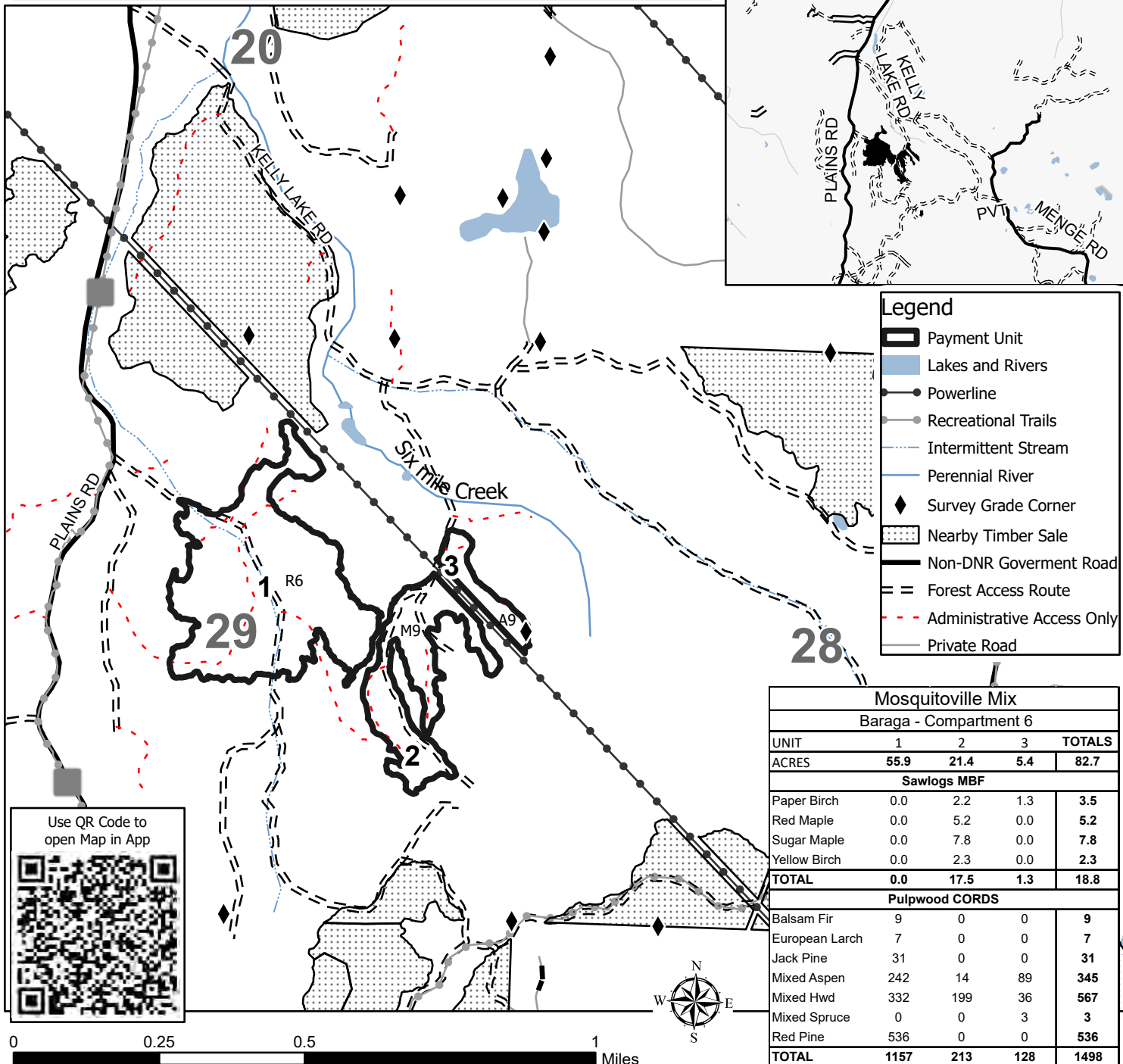
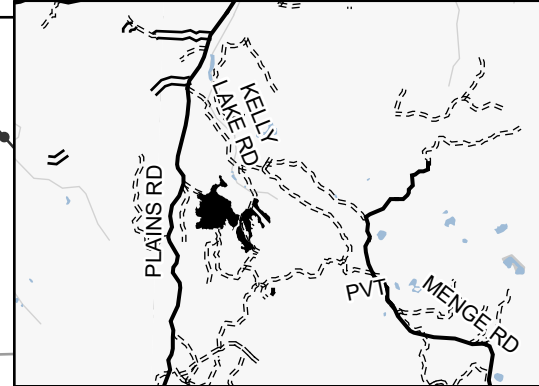
Sec. 28 SWNW,NWSW; Sec. 29 SENW,NWNE,S1/2NE,NESW,N1/2SE; Sec. 29 SESE;

Cover Type

A = Aspen	J = Jack Pine	O = Oak	U = Upland Brush
B = Paper Birch	K = Rock	P = Lowland Poplar	UM = Upland Mix Forest
C = Cedar	L = Lowland Brush	Q = Mixed Swamp Conifer	V = Bog or Marsh
D = Treed Bog	LM = Lowland Mix Forest	R = Red Pine	W = White Pine
E = Swamp Hardwoods	M = Maple, Beech, Birch	S = Black Spruce	X = Non Stocked
F = Spruce/Fir	MC = Mixed Conifer	T = Tamarack	Y = Sand
G = Grass	MD = Mixed Deciduous	Z = Water	
H = Hemlock	N = Marsh		

Density

0 = Non Stocked	5 = Pole Timber Medium
1 = Seedling Sapling Poor	6 = Pole Timber Well
2 = Seedling Sapling Medium	7 = Saw Timber Poor
3 = Seedling Sapling Well	8 = Saw Timber Medium
4 = Pole Timber Poor	9 = Saw Timber Well

Locator Map 1:100,000**Legend**

- Payment Unit
- Lakes and Rivers
- Powerline
- Recreational Trails
- Intermittent Stream
- Perennial River
- Survey Grade Corner
- Nearby Timber Sale
- Non-DNR Government Road
- Forest Access Route
- Administrative Access Only
- Private Road

Mosquitoville Mix**Baraga - Compartment 6**

UNIT	1	2	3	TOTALS
ACRES	55.9	21.4	5.4	82.7
Sawlogs MBF				
Paper Birch	0.0	2.2	1.3	3.5
Red Maple	0.0	5.2	0.0	5.2
Sugar Maple	0.0	7.8	0.0	7.8
Yellow Birch	0.0	2.3	0.0	2.3
TOTAL	0.0	17.5	1.3	18.8
Pulpwood CORDS				
Balsam Fir	9	0	0	9
European Larch	7	0	0	7
Jack Pine	31	0	0	31
Mixed Aspen	242	14	89	345
Mixed Hwd	332	199	36	567
Mixed Spruce	0	0	3	3
Red Pine	536	0	0	536
TOTAL	1157	213	128	1498