

**TIMBER SALE MAP**

This information provided by authority of Part 525, 1994 PA 451, as amended.

Sale Number

**11-008-25**

Date

**05/09/2025**

Forest Management Unit

County

Mapped By: Dorvinen

Scale

Page

Of

Baraga Mgt Unit

Baraga

Cruised By: Hansen/Dorvinen

**1:15,840****1****1**

Township

Range

Section(s) and

50N

34W

Subdivision(s) Sec. 30 S1/2NW,SWNE,SW,W1/2SE;

**Cover Type**

A = Aspen J = Jack Pine O = Oak U = Upland Brush  
B = Paper Birch K = Rock P = Lowland Poplar UM = Upland Mix Forest  
C = Cedar L = Lowland Brush Q = Mixed Swamp Conifer V = Bog or Marsh  
D = Treed Bog LM = Lowland Mix Forest R = Red Pine W = White Pine  
E = Swamp Hardwoods M = Maple, Beech, Birch S = Black Spruce X = Non Stocked  
F = Spruce/Fir MC = Mixed Conifer T = Tamarack Y = Sand  
G = Grass MD = Mixed Deciduous Z = Water  
H = Hemlock N = Marsh

**Density**

0 = Non Stocked 5 = Pole Timber Medium  
1 = Seedling Sapling Poor 6 = Pole Timber Well  
2 = Seedling Sapling Medium 7 = Saw Timber Poor  
3 = Seedling Sapling Well 8 = Saw Timber Medium  
4 = Pole Timber Poor 9 = Saw Timber Well

**Mustard Creek Aspen****Baraga - Compartment 6**

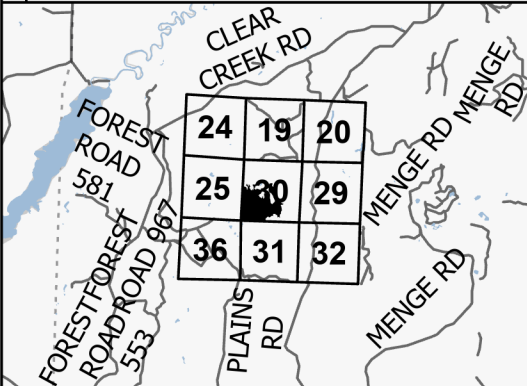
UNIT	1	2	3	4	5	TOTALS
ACRES	46.3	28.7	47.7	18.8	36.3	177.8

**Sawlogs MBF**

Red Maple	12.8	7.9	13.1	5.2	10.0	49.0
Sugar Maple	6.0	3.7	6.3	2.5	4.7	23.2
Paper Birch	2.7	1.7	2.8	1.1	2.1	10.4
<b>TOTAL</b>	<b>21.5</b>	<b>13.3</b>	<b>22.2</b>	<b>8.8</b>	<b>16.8</b>	<b>82.6</b>

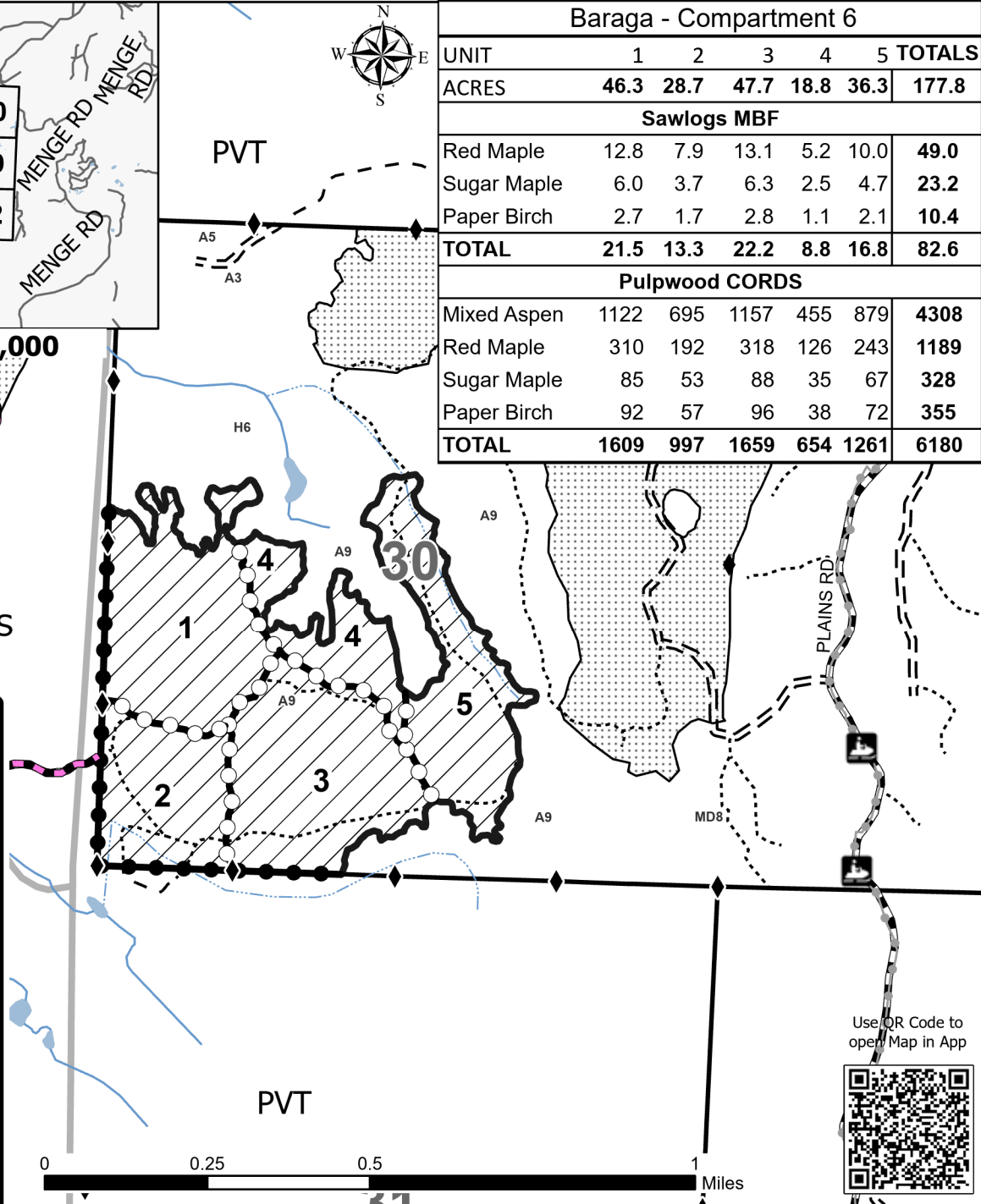
**Pulpwood CORDS**

Mixed Aspen	1122	695	1157	455	879	4308
Red Maple	310	192	318	126	243	1189
Sugar Maple	85	53	88	35	67	328
Paper Birch	92	57	96	38	72	355
<b>TOTAL</b>	<b>1609</b>	<b>997</b>	<b>1659</b>	<b>654</b>	<b>1261</b>	<b>6180</b>

**Locator Map 1:200,000**

**Legend**

- Against State (Red)
- Private Line (Blue)
- Payment Unit (Red)
- USFS Access Route
- Forest Access Route
- Administrative Access Only
- Paved Road
- Government Gravel/Dirt
- Private Gravel/Dirt
- Recreational Trails
- Intermittent Stream
- Perennial River
- Nearby Timber Sale
- Clearcut

Use QR Code to  
open Map in App