



TIMBER SALE MAP

This information provided by authority of Part 525, 1994 PA 451, as amended.

Sale Number

11-006-26

Date

12/05/2025

Forest Management Unit

County

Mapped By: Ryan Mattila

Scale

1:24,000

Page

1

Of

1

Township

51N

Range

30W

Section(s) and

Subdivision(s) Sec. 4 SENW,NE; Sec. 5 SESW,SE; Sec. 8 N1/2NE,SWNE,SE;

Cover Type

| | | | |
|---------------------|-------------------------|-------------------------|------------------------|
| A = Aspen | J = Jack Pine | O = Oak | U = Upland Brush |
| B = Paper Birch | K = Rock | P = Lowland Poplar | UM = Upland Mix Forest |
| C = Cedar | L = Lowland Brush | Q = Mixed Swamp Conifer | V = Bog or Marsh |
| D = Treed Bog | LM = Lowland Mix Forest | R = Red Pine | W = White Pine |
| E = Swamp Hardwoods | M = Maple, Beech, Birch | S = Black Spruce | X = Non Stocked |
| F = Spruce/Fir | MC = Mixed Conifer | T = Tamarack | Y = Sand |
| G = Grass | MD = Mixed Deciduous | | Z = Water |
| H = Hemlock | N = Marsh | | |

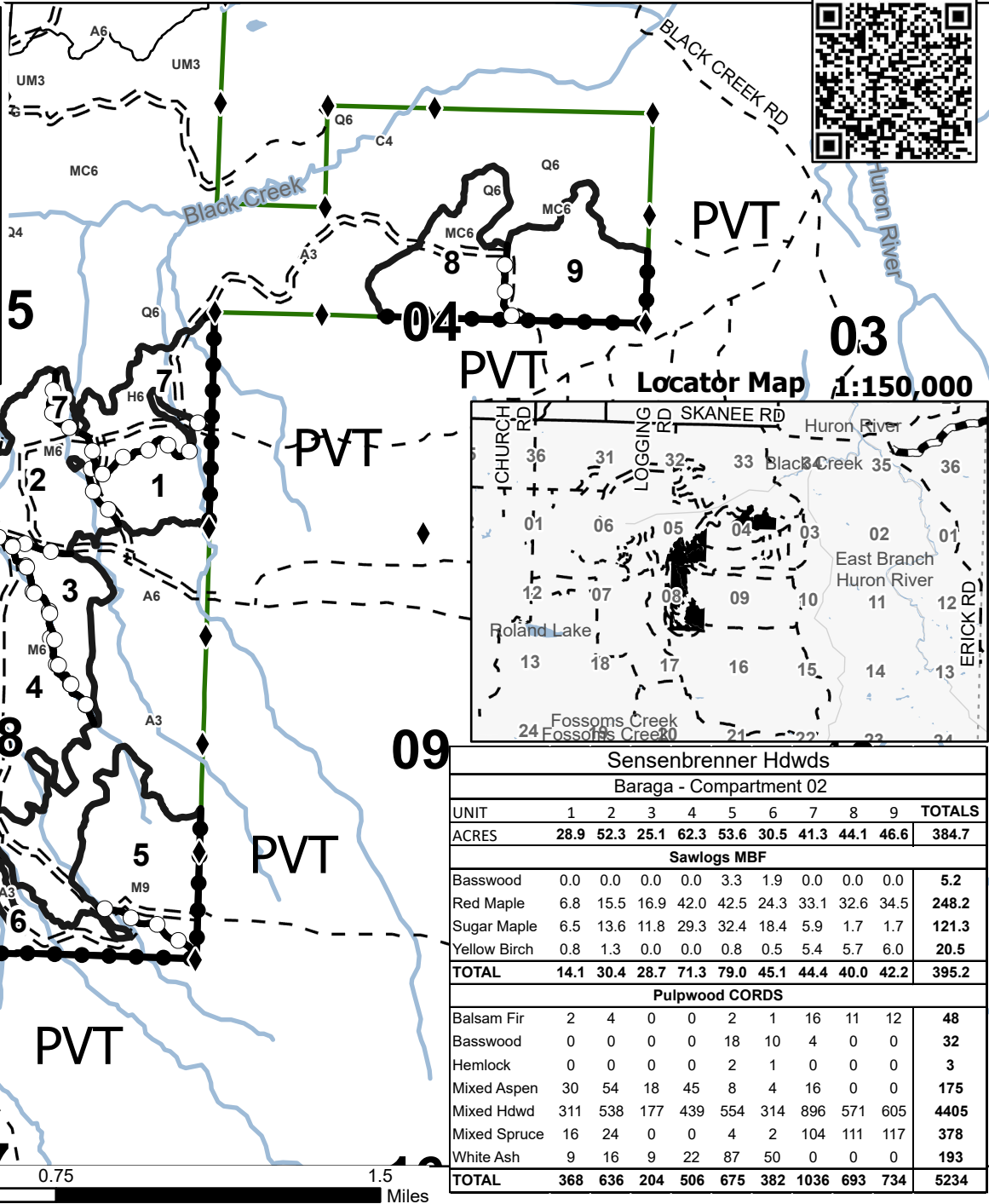
Density

| | |
|-----------------------------|------------------------|
| 0 = Non Stocked | 5 = Pole Timber Medium |
| 1 = Seedling Sapling Poor | 6 = Pole Timber Well |
| 2 = Seedling Sapling Medium | 7 = Saw Timber Poor |
| 3 = Seedling Sapling Well | 8 = Saw Timber Medium |
| 4 = Pole Timber Poor | 9 = Saw Timber Well |

Use QR Code to
download tree list

Legend

- Against State (Red)
- Private Line (Blue)
- Payment Unit (Red)
- Nearby Timber Sale
- Forest Access Route
- Private Gravel/Dirt
- Survey Grade Corner
- Lakes and Rivers
- Streams

Use QR Code to
open Map in App

0 0.38 0.75 1.5 Miles

Sensenbrenner Hdws

Baraga - Compartment 02

| UNIT | 1 | 2 | 3 | 4 | 5 | 6 | 7 | 8 | 9 | TOTALS |
|----------------|------|------|------|------|------|------|------|------|------|--------|
| ACRES | 28.9 | 52.3 | 25.1 | 62.3 | 53.6 | 30.5 | 41.3 | 44.1 | 46.6 | 384.7 |
| Sawlogs MBF | | | | | | | | | | |
| Basswood | 0.0 | 0.0 | 0.0 | 0.0 | 3.3 | 1.9 | 0.0 | 0.0 | 0.0 | 5.2 |
| Red Maple | 6.8 | 15.5 | 16.9 | 42.0 | 42.5 | 24.3 | 33.1 | 32.6 | 34.5 | 248.2 |
| Sugar Maple | 6.5 | 13.6 | 11.8 | 29.3 | 32.4 | 18.4 | 5.9 | 1.7 | 1.7 | 121.3 |
| Yellow Birch | 0.8 | 1.3 | 0.0 | 0.0 | 0.8 | 0.5 | 5.4 | 5.7 | 6.0 | 20.5 |
| TOTAL | 14.1 | 30.4 | 28.7 | 71.3 | 79.0 | 45.1 | 44.4 | 40.0 | 42.2 | 395.2 |
| Pulpwood CORDS | | | | | | | | | | |
| Balsam Fir | 2 | 4 | 0 | 0 | 2 | 1 | 16 | 11 | 12 | 48 |
| Basswood | 0 | 0 | 0 | 0 | 18 | 10 | 4 | 0 | 0 | 32 |
| Hemlock | 0 | 0 | 0 | 0 | 2 | 1 | 0 | 0 | 0 | 3 |
| Mixed Aspen | 30 | 54 | 18 | 45 | 8 | 4 | 16 | 0 | 0 | 175 |
| Mixed Hdwd | 311 | 538 | 177 | 439 | 554 | 314 | 896 | 571 | 605 | 4405 |
| Mixed Spruce | 16 | 24 | 0 | 0 | 4 | 2 | 104 | 111 | 117 | 378 |
| White Ash | 9 | 16 | 9 | 22 | 87 | 50 | 0 | 0 | 0 | 193 |
| TOTAL | 368 | 636 | 204 | 506 | 675 | 382 | 1036 | 693 | 734 | 5234 |