

**TIMBER SALE MAP**

This information provided by authority of Part 525, 1994 PA 451, as amended.

Sale Number

**72-630-24**

Date

**01/15/2025**

Forest Management Unit

County

Mapped By: Porteous

Scale

**1:10,000**

Page

**1**

Of

**1**

Grayling Mgt Unit

Crawford

Cruised By: Porteous

Township

**28N**

Range

**02W**

Section(s) and

Subdivision(s) Sec. 29 W1/2NW,NWSW; Sec. 30 S1/2NW,SENE,N1/2SW,N1/2SE,SWSE;

**Cover Type**

A = Aspen	J = Jack Pine	O = Oak	U = Upland Brush
B = Paper Birch	K = Rock	P = Lowland Poplar	UM = Upland Mix Forest
C = Cedar	L = Lowland Brush	Q = Mixed Swamp Conifer	V = Bog or Marsh
D = Treed Bog	LM = Lowland Mix Forest	R = Red Pine	W = White Pine
E = Swamp Hardwoods	M = Maple, Beech, Birch	S = Black Spruce	X = Non Stocked
F = Spruce/Fir	MC = Mixed Conifer	T = Tamarack	Y = Sand
G = Grass	MD = Mixed Deciduous		Z = Water
H = Hemlock	N = Marsh		

**Density**

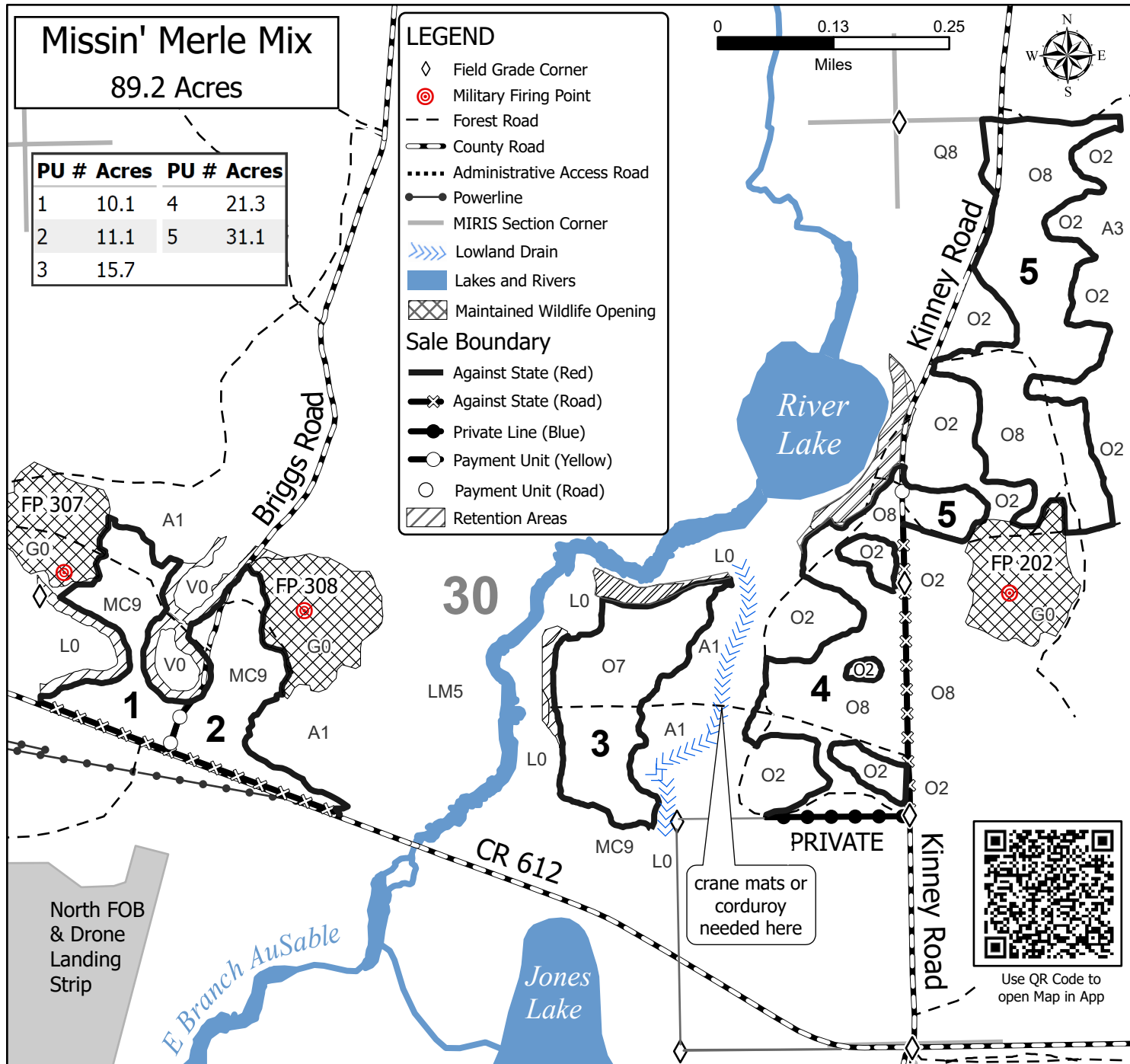
0 = Non Stocked	5 = Pole Timber Medium
1 = Seedling Sapling Poor	6 = Pole Timber Well
2 = Seedling Sapling Medium	7 = Saw Timber Poor
3 = Seedling Sapling Well	8 = Saw Timber Medium
4 = Pole Timber Poor	9 = Saw Timber Well

**Missin' Merle Mix****89.2 Acres**

PU #	Acres	PU #	Acres
1	10.1	4	21.3
2	11.1	5	31.1
3	15.7		

**LEGEND**

- ◇ Field Grade Corner
- ⊙ Military Firing Point
- - - Forest Road
- ▬ County Road
- ⋯ Administrative Access Road
- Powerline
- MIRIS Section Corner
- ▬▬ Lowland Drain
- ▬ Lakes and Rivers
- ▨ Maintained Wildlife Opening
- Sale Boundary**
- ▬ Against State (Red)
- ▬ Against State (Road)
- ▬ Private Line (Blue)
- Payment Unit (Yellow)
- Payment Unit (Road)
- ▨ Retention Areas

0 0.13 0.25  
MilesNorth FOB  
& Drone  
Landing  
Strip

E Branch AuSable

Jones  
Lakecrane mats or  
corduroy  
needed here

PRIVATE

Use QR Code to  
open Map in App