

**TIMBER SALE MAP**

This information provided by authority of Part 525, 1994 PA 451, as amended.

Sale Number

**32-026-25**

Date

**09/09/2025**

Forest Management Unit

Gwinn Mgt Unit

County

Marquette

Mapped By: Siler

Cruised By: Siler &amp; Gould

Scale

1:10,000

Page

1

Of

1

Township

46N

Range

25W

Section(s) and

Subdivision(s) Sec. 29 SWNW,E1/2SW;

**Cover Type**

A = Aspen	J = Jack Pine	O = Oak	U = Upland Brush
B = Paper Birch	K = Rock	P = Lowland Poplar	UM = Upland Mix Forest
C = Cedar	L = Lowland Brush	Q = Mixed Swamp Conifer	V = Bog or Marsh
D = Treed Bog	LM = Lowland Mix Forest	R = Red Pine	W = White Pine
E = Swamp Hardwoods	M = Maple, Beech, Birch	S = Black Spruce	X = Non Stocked
F = Spruce/Fir	MC = Mixed Conifer	T = Tamarack	Y = Sand
G = Grass	MD = Mixed Deciduous		Z = Water
H = Hemlock	N = Marsh		

**Density**

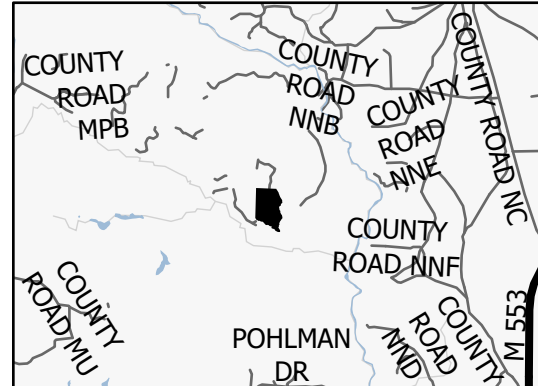
0 = Non Stocked	5 = Pole Timber Medium
1 = Seedling Sapling Poor	6 = Pole Timber Well
2 = Seedling Sapling Medium	7 = Saw Timber Poor
3 = Seedling Sapling Well	8 = Saw Timber Medium
4 = Pole Timber Poor	9 = Saw Timber Well

Payment Unit Number	Acres
1	39.4

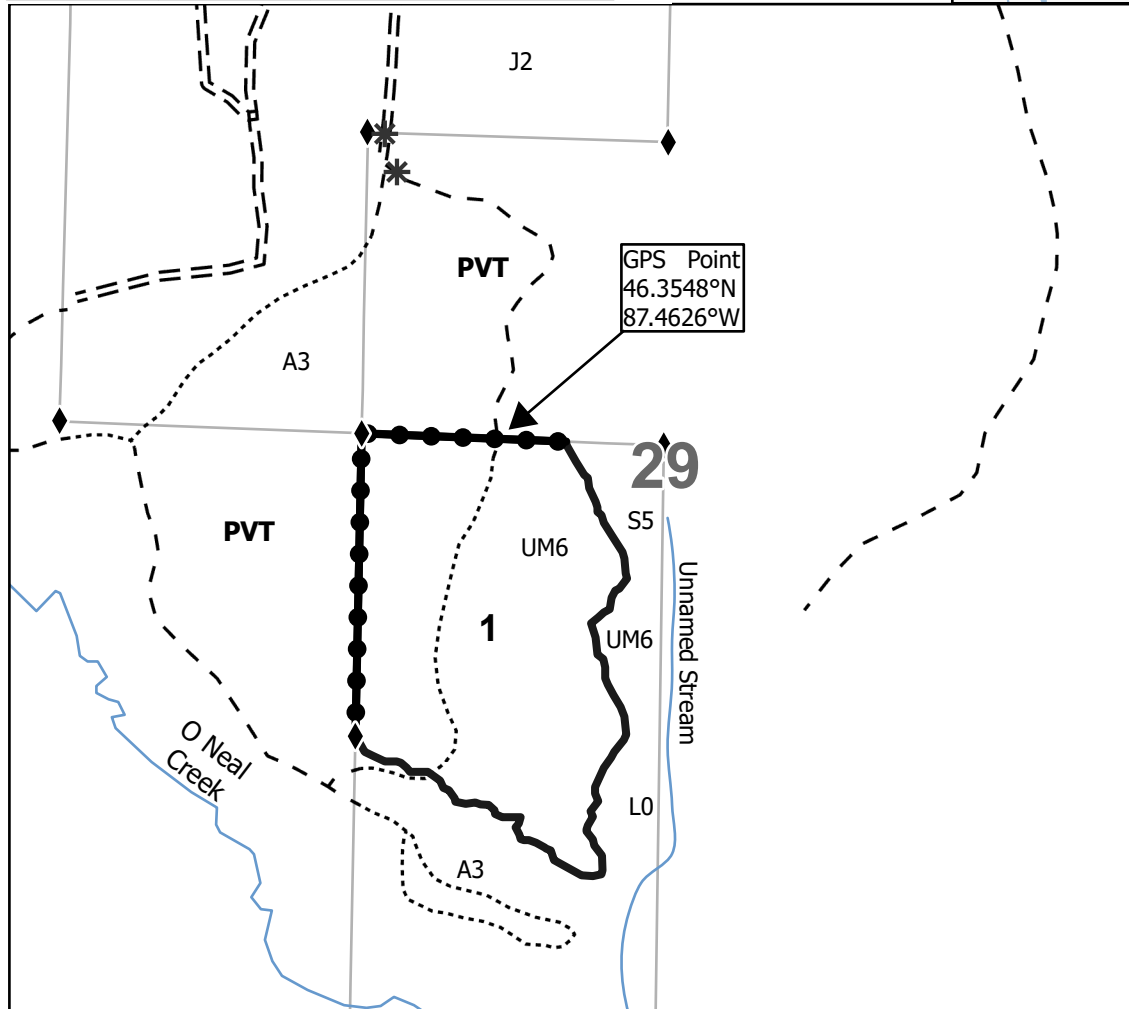
## Hummingbird Hideaway

### Compartment 32279

39.4 Acres

**Locator Map 1:100,000**

0 0.13 0.25 0.5 Miles

**Legend**

- Against State (Red)
- Private Line (Blue)
- State Boundary
- Forest Access Route
- Administrative Access Only
- Private Gravel/Dirt
- Stream/River
- Survey Grade Corner
- Gate

