

**TIMBER SALE MAP**

This information provided by authority of Part 525, 1994 PA 451, as amended.

Sale Number

**32-006-25**

Date

**06/25/2025**

Forest Management Unit

Gwinn Mgt Unit

County

Marquette

Mapped By: Jacob Siler

Cruised By: Gould &amp; Siler

Scale

**1:15,840**

Page

**1**

Of

**1**

Township

**46N**

Range

**25W**

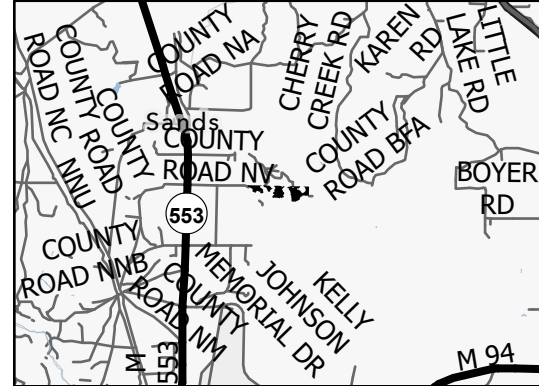
Section(s) and

Subdivision(s) **Sec. 12 N1/2NW,NE;****Cover Type**

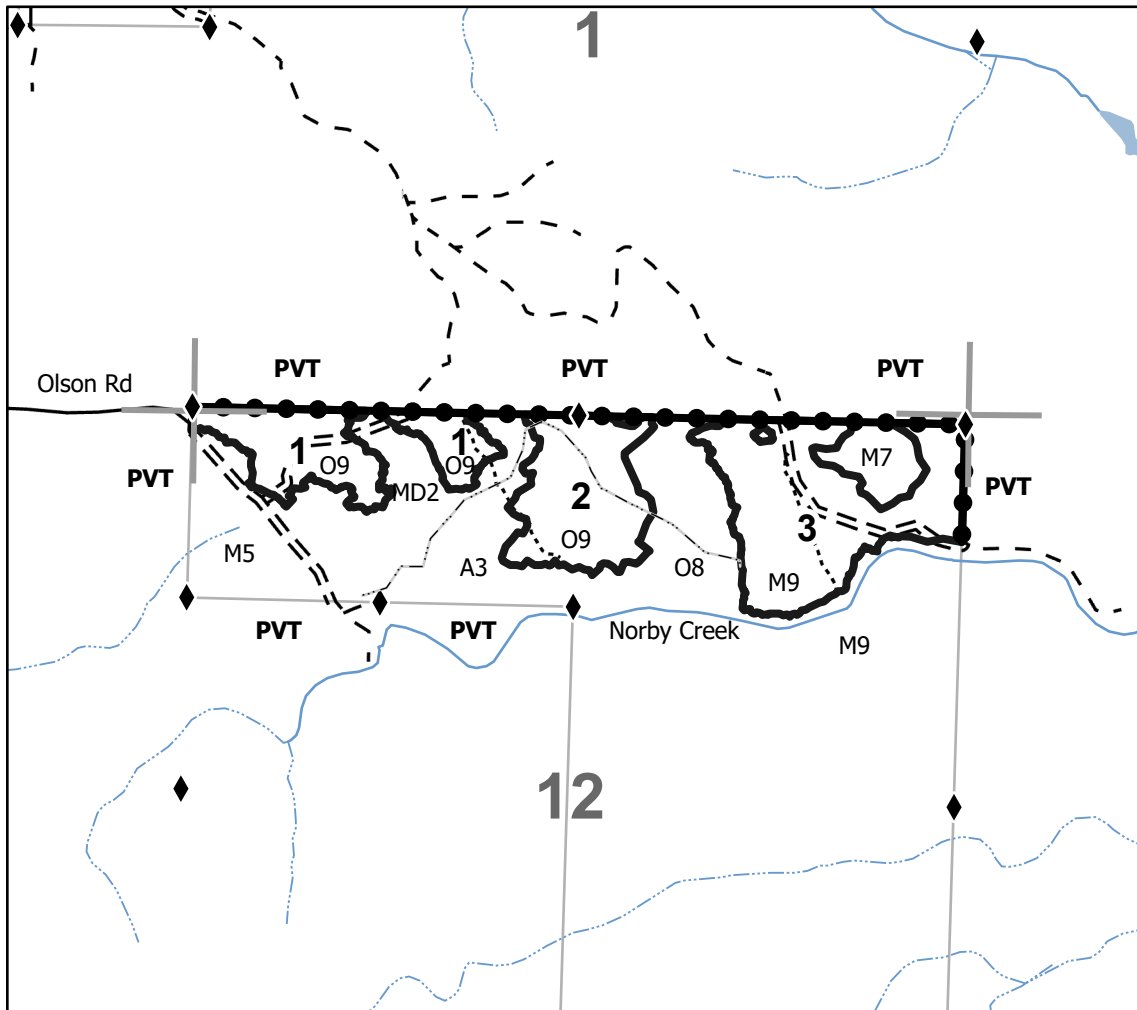
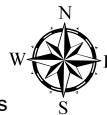
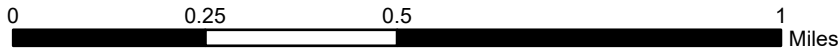
A = Aspen	J = Jack Pine	O = Oak	U = Upland Brush
B = Paper Birch	K = Rock	P = Lowland Poplar	UM = Upland Mix Forest
C = Cedar	L = Lowland Brush	Q = Mixed Swamp Conifer	V = Bog or Marsh
D = Treed Bog	LM = Lowland Mix Forest	R = Red Pine	W = White Pine
E = Swamp Hardwoods	M = Maple, Beech, Birch	S = Black Spruce	X = Non Stocked
F = Spruce/Fir	MC = Mixed Conifer	T = Tamarack	Y = Sand
G = Grass	MD = Mixed Deciduous	Z = Water	
H = Hemlock	N = Marsh		

**Density**

0 = Non Stocked	5 = Pole Timber Medium
1 = Seedling Sapling Poor	6 = Pole Timber Well
2 = Seedling Sapling Medium	7 = Saw Timber Poor
3 = Seedling Sapling Well	8 = Saw Timber Medium
4 = Pole Timber Poor	9 = Saw Timber Well

**Locator Map 1:200,000**

Payment Unit Number	Acres
1	17.7
2	19.3
3	33

**Ridge Runner Hardwood****Compartment 275****70.0 Acres****Legend**

- Against State (Red)
- Private Line (Blue)
- State Boundary
- Forest Access Route
- Administrative Access Only
- Paved Road
- Government Gravel/Dirt
- Private Gravel/Dirt
- Proposed Pre-Haul Road
- Survey Grade Corner
- Section Corner