



TIMBER SALE MAP

This information provided by authority of Part 525, 1994 PA 451, as amended.

Sale Number 32-004-26	Date 04/03/2026
Scale 1:20,570	Page 1
	Of 1

Forest Management Unit Gwinn Mgt Unit	County Marquette	Mapped By: Siler
		Cruised By: Siler & Gould

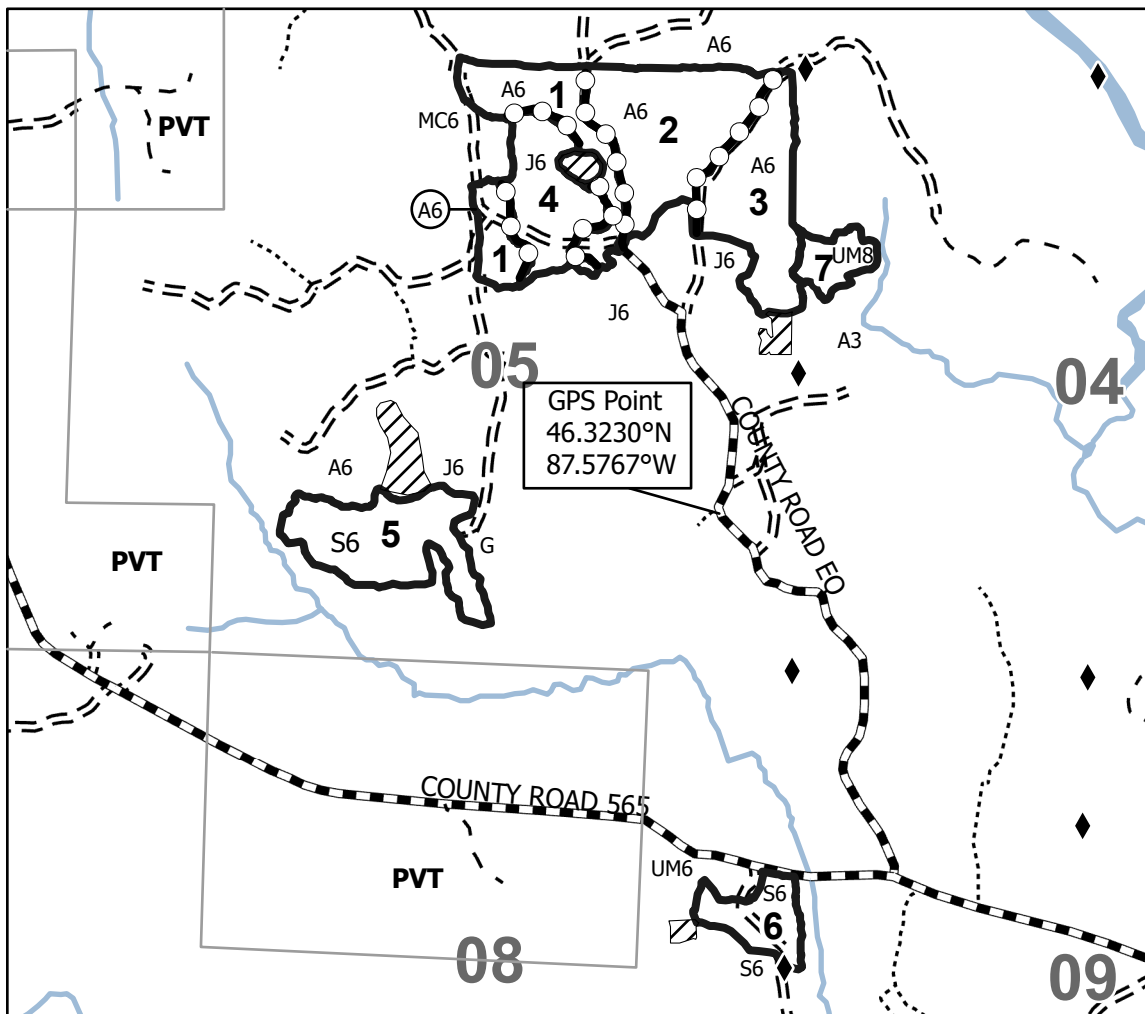
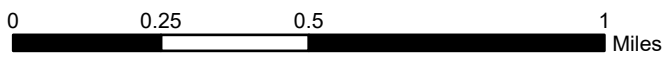
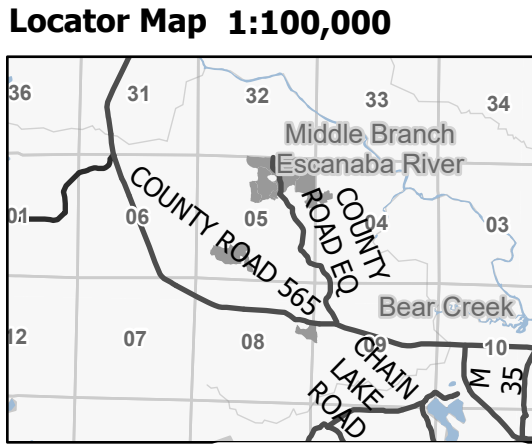
Township 45N / 46N	Range 26W	Section(s) and Subdivision(s) Sec. 32 SESW,SESE; Sec. 4 W1/2NW; Sec. 5 E1/2NW,NE,SW; Sec. 8 SENE; Sec. 9 SWNW;
------------------------------	---------------------	---

Cover Type			
A = Aspen	J = Jack Pine	O = Oak	U = Upland Brush
B = Paper Birch	K = Rock	P = Lowland Poplar	UM = Upland Mix Forest
C = Cedar	L = Lowland Brush	Q = Mixed Swamp Conifer	V = Bog or Marsh
D = Treed Bog	LM = Lowland Mix Forest	R = Red Pine	W = White Pine
E = Swamp Hardwoods	M = Maple, Beech, Birch	S = Black Spruce	X = Non Stocked
F = Spruce/Fir	MC = Mixed Conifer	T = Tamarack	Y = Sand
G = Grass	MD = Mixed Deciduous	Z = Water	
H = Hemlock	N = Marsh		

Density	
0 = Non Stocked	5 = Pole Timber Medium
1 = Seedling Sapling Poor	6 = Pole Timber Well
2 = Seedling Sapling Medium	7 = Saw Timber Poor
3 = Seedling Sapling Well	8 = Saw Timber Medium
4 = Pole Timber Poor	9 = Saw Timber Well

Payment Unit Number	Acres	Payment Unit Number	Acres
1	26.6	5	27.3
2	34.4	6	10.6
3	27.4	7	6.7
4	19.6		

Charcuterie
Compartment 33 & 34
152.6 Acres



Legend	
	Against State (Red)
	Payment Unit (Yellow)
	State Boundary
	Forest Access Route
	Administrative Access Only
	Government Gravel/Dirt
	Private Gravel/Dirt
	Survey Grade Corner
	Lakes and Rivers
	Streams
	Special Protection Area

