

**TIMBER SALE MAP**

This information provided by authority of Part 525, 1994 PA 451, as amended.

Sale Number

**32-019-25**

Date

**07/24/2025**

Forest Management Unit

Gwinn Mgt Unit

County

Marquette

Mapped By: Gould

Cruised By: Gould, Siler

Scale

1:20,000

Page

1

Of

1

Township

44N

Range

25W /

Section(s) and

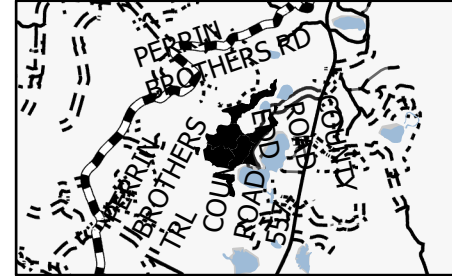
Subdivision(s) Sec. 12 SENW,NE,NESW,N1/2SE,SWSE; Sec. 7 W1/2NW;

**Cover Type**

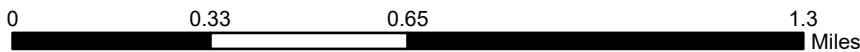
A = Aspen	J = Jack Pine	O = Oak	U = Upland Brush
B = Paper Birch	K = Rock	P = Lowland Poplar	UM = Upland Mix Forest
C = Cedar	L = Lowland Brush	Q = Mixed Swamp Conifer	V = Bog or Marsh
D = Treed Bog	LM = Lowland Mix Forest	R = Red Pine	W = White Pine
E = Swamp Hardwoods	M = Maple, Beech, Birch	S = Black Spruce	X = Non Stocked
F = Spruce/Fir	MC = Mixed Conifer	T = Tamarack	Y = Sand
G = Grass	MD = Mixed Deciduous	Z = Water	
H = Hemlock	N = Marsh		

**Density**

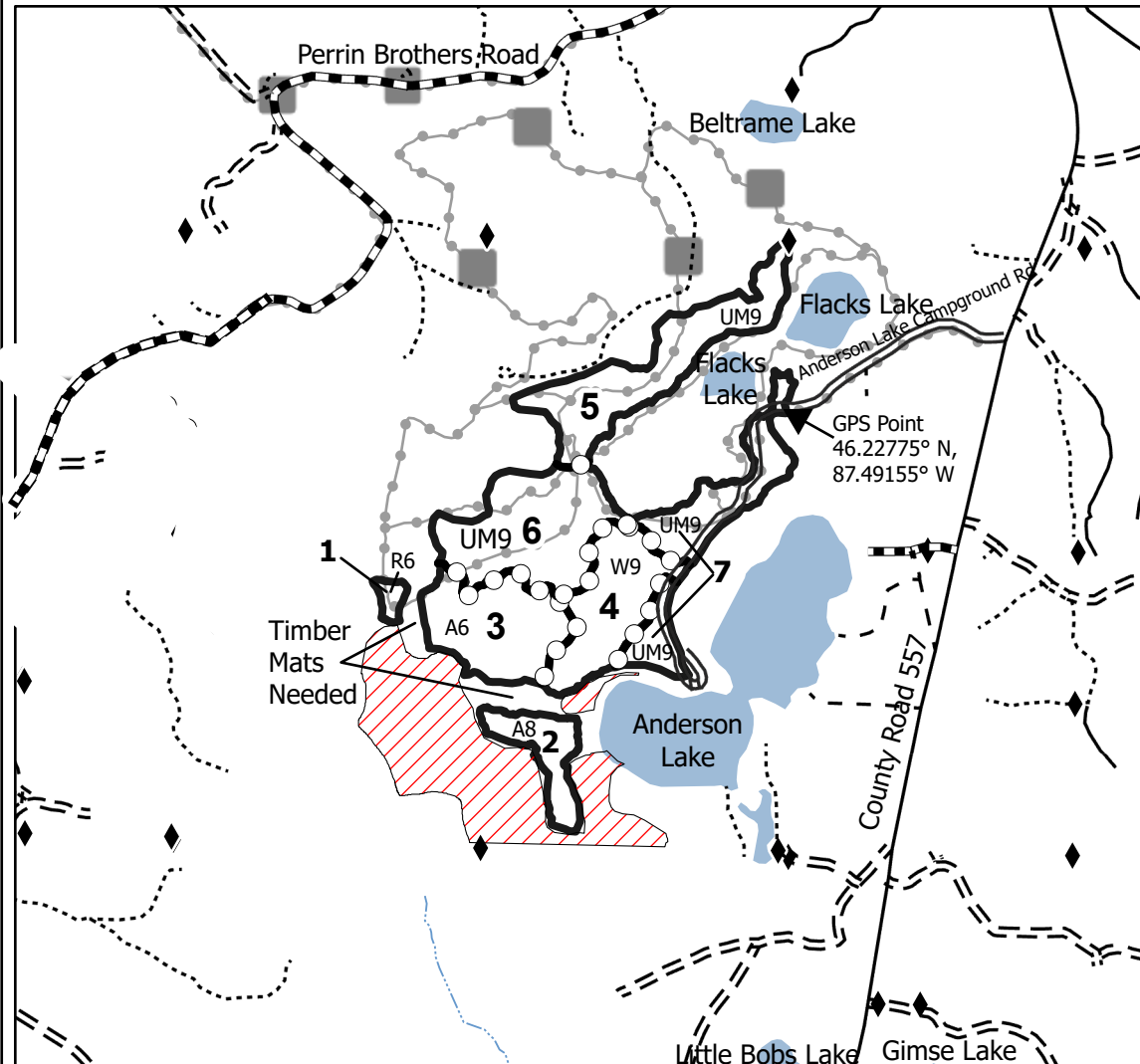
0 = Non Stocked	5 = Pole Timber Medium
1 = Seedling Sapling Poor	6 = Pole Timber Well
2 = Seedling Sapling Medium	7 = Saw Timber Poor
3 = Seedling Sapling Well	8 = Saw Timber Medium
4 = Pole Timber Poor	9 = Saw Timber Well

**Locator Map 1:100,000**

Payment Unit Number	Acres	Payment Unit Number	Acres
1	1.6	5	25.1
2	8.9	6	28
3	21.4	7	19.6
4	19.9		

**Anderson Lake****124.7 Acres****Compartment 32049****Legend**

- Against State (Red)
- Private Line (Blue)
- Payment Unit (Yellow)
- Recreational Trails
- Primary Forest Road
- Forest Access Route
- Administrative Access Only
- Paved Road
- Government Gravel/Dirt
- Private Gravel/Dirt
- Field Grade Corner
- Survey Grade Corner
- No Equipment or Cutting

Use QR Code to  
open Map in App