

**TIMBER SALE MAP**

This information provided by authority of Part 525, 1994 PA 451, as amended.

Sale Number

32-001-26

Date

05/09/2025

Forest Management Unit

Gwinn Mgt Unit

County

Marquette

Mapped By: Fischer

Cruised By:

Scale

1:15,840

Page

2

Of

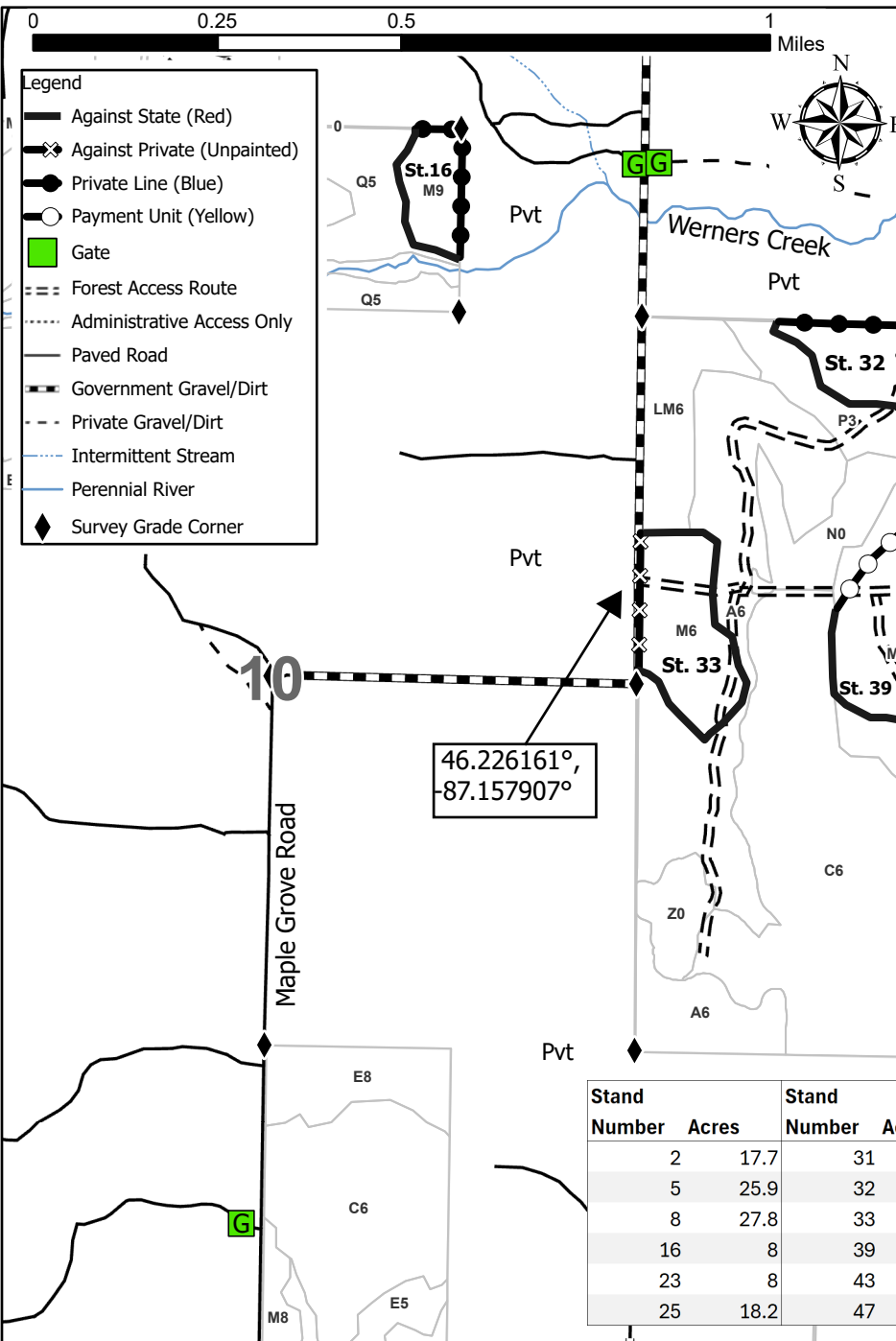
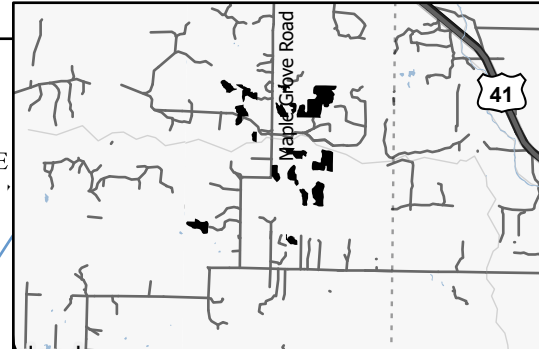
3

Township
44N / 45NRange
23WSection(s) and Subdivision(s)
Sec. 2 NW,NE; Sec. 3 N1/2NW,SE,SW,W1/2NE,NESW,SWSE; Sec. 34 S1/2SW;
Sec. 1 NWNW; Sec. 11 NW,NE,N1/2SW,SE,SW,SE; Sec. 14 SENW,NESW; Sec. 16 NENE,S1/2NE;**Cover Type**

A = Aspen	J = Jack Pine	O = Oak	U = Upland Brush
B = Paper Birch	K = Rock	P = Lowland Poplar	UM = Upland Mix Forest
C = Cedar	L = Lowland Brush	Q = Mixed Swamp Conifer	V = Bog or Marsh
D = Treed Bog	LM = Lowland Mix Forest	R = Red Pine	W = White Pine
E = Swamp Hardwoods	M = Maple, Beech, Birch	S = Black Spruce	X = Non Stocked
F = Spruce/Fir	MC = Mixed Conifer	T = Tamarack	Y = Sand
G = Grass	MD = Mixed Deciduous		Z = Water
H = Hemlock	N = Marsh		

Density

0 = Non Stocked	5 = Pole Timber Medium
1 = Seedling Sapling Poor	6 = Pole Timber Well
2 = Seedling Sapling Medium	7 = Saw Timber Poor
3 = Seedling Sapling Well	8 = Saw Timber Medium
4 = Pole Timber Poor	9 = Saw Timber Well

Locator Map 1:200,000

Stand Number	Acres	Stand Number	Acres	Stand Number	Acres
2	17.7	31	122.6	49	41.1
5	25.9	32	25.1	56	12.4
8	27.8	33	17.9	61	32
16	8	39	22.1	79	8.8
23	8	43	57.1		
25	18.2	47	16.1		

Use QR Code to
open Map in App