



**TIMBER SALE MAP**

This information provided by authority of Part 525, 1994 PA 451, as amended.

Sale Number

**32-014-25**

Date

**07/25/2025**

Forest Management Unit

Gwinn Mgt Unit

County

Marquette

Mapped By:

Cruised By:

Scale

**1:17,000**

Page

**1**

Of

**1**

Township 43N Range 26W Section(s) and SESE; Sec. 8 S1/2SW,SWSE; Sec. 9 SWSW; Subdivision(s) Sec. 16 NW,S1/2NE,NWSW,NESE; Sec. 17 NW,NWNE,S1/2NE,SW,SE; Sec. 18 N1/2NE,SENE; Sec. 7

**Cover Type**

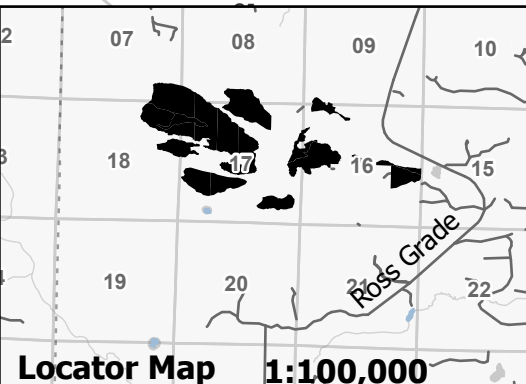
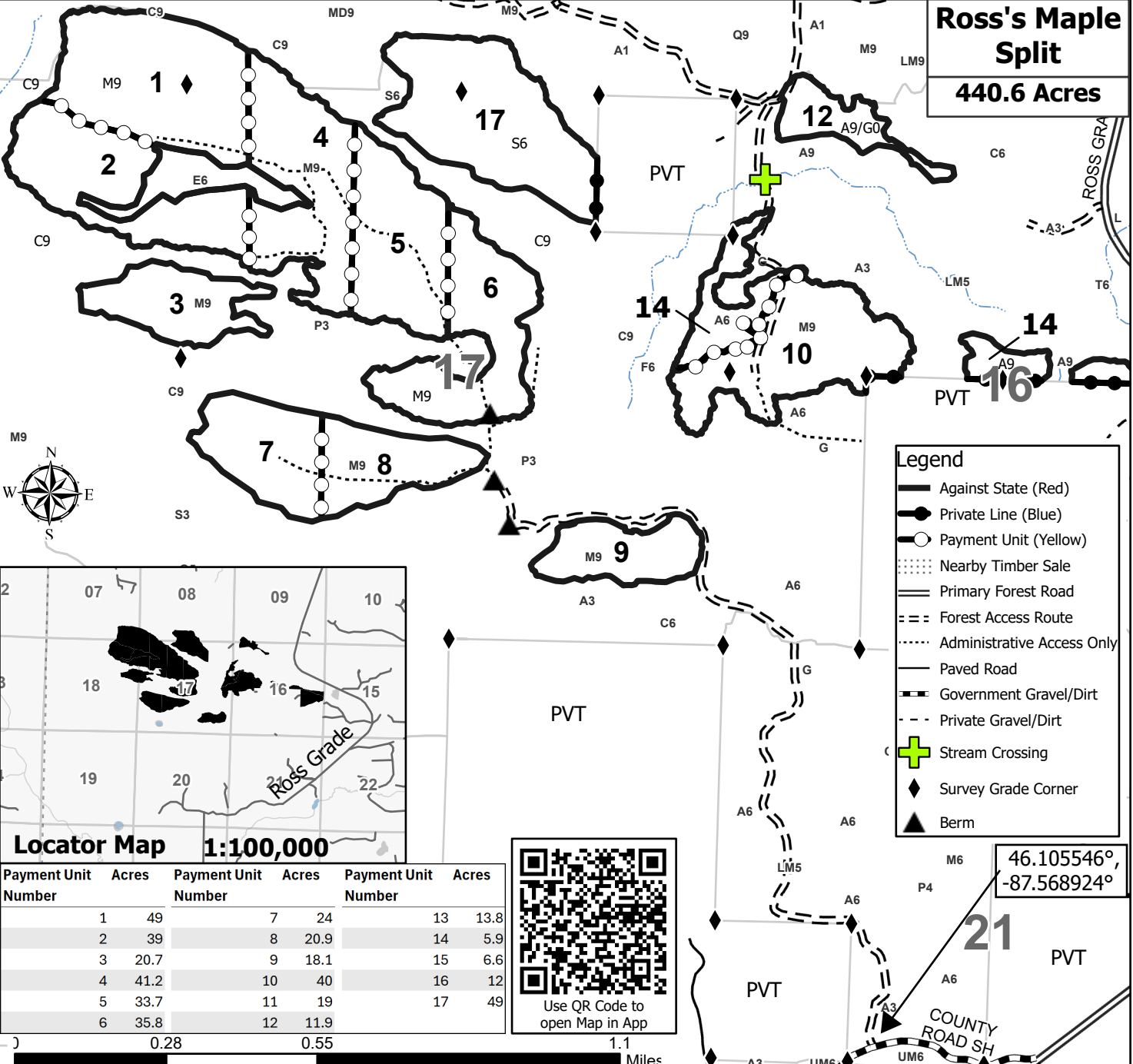
A = Aspen J = Jack Pine O = Oak U = Upland Brush  
B = Paper Birch K = Rock P = Lowland Poplar UM = Upland Mix Forest  
C = Cedar L = Lowland Brush Q = Mixed Swamp Conifer V = Bog or Marsh  
D = Treed Bog LM = Lowland Mix Forest R = Red Pine W = White Pine  
E = Swamp Hardwoods M = Maple, Beech, Birch S = Black Spruce X = Non Stocked  
F = Spruce/Fir MC = Mixed Conifer T = Tamarack Y = Sand  
G = Grass MD = Mixed Deciduous Z = Water  
H = Hemlock N = Marsh

**Density**

0 = Non Stocked 5 = Pole Timber Medium  
1 = Seedling Sapling Poor 6 = Pole Timber Well  
2 = Seedling Sapling Medium 7 = Saw Timber Poor  
3 = Seedling Sapling Well 8 = Saw Timber Medium  
4 = Pole Timber Poor 9 = Saw Timber Well

**Ross's Maple Split**

**440.6 Acres**



**Locator Map 1:100,000**

Payment Unit Number	Acres	Payment Unit Number	Acres	Payment Unit Number	Acres
1	49	7	24	13	13.8
2	39	8	20.9	14	5.9
3	20.7	9	18.1	15	6.6
4	41.2	10	40	16	12
5	33.7	11	19	17	49
6	35.8	12	11.9		
0.28		0.55		1.1	



Use QR Code to open Map in App

46.105546°, -87.568924°

**21**

PVT

COUNTY ROAD SH