

**TIMBER SALE MAP**

This information provided by authority of Part 525, 1994 PA 451, as amended.

Sale Number

42-012-25

Date

05/19/2025

Forest Management Unit

County

Mapped By: Anthony Ciaramitaro

Scale

Page

Of

Newberry Mgt Unit

Luce

Cruised By: Newberry Unit Staff

1:9,700**1****1**

Township

45N

Range

08W /

Section(s) and

Subdivision(s) Sec. 19 SWSW; Sec. 24 SESE; Sec. 25 SENW,N1/2NE,SWNE,E1/2SW,W1/2SE; Sec. 30 NWNW;

Cover Type

A = Aspen	J = Jack Pine	O = Oak	U = Upland Brush
B = Paper Birch	K = Rock	P = Lowland Poplar	UM = Upland Mix Forest
C = Cedar	L = Lowland Brush	Q = Mixed Swamp Conifer	V = Bog or Marsh
D = Treed Bog	LM = Lowland Mix Forest	R = Red Pine	W = White Pine
E = Swamp Hardwoods	M = Maple, Beech, Birch	S = Black Spruce	X = Non Stocked
F = Spruce/Fir	MC = Mixed Conifer	T = Tamarack	Y = Sand
G = Grass	MD = Mixed Deciduous		Z = Water
H = Hemlock	N = Marsh		

Density

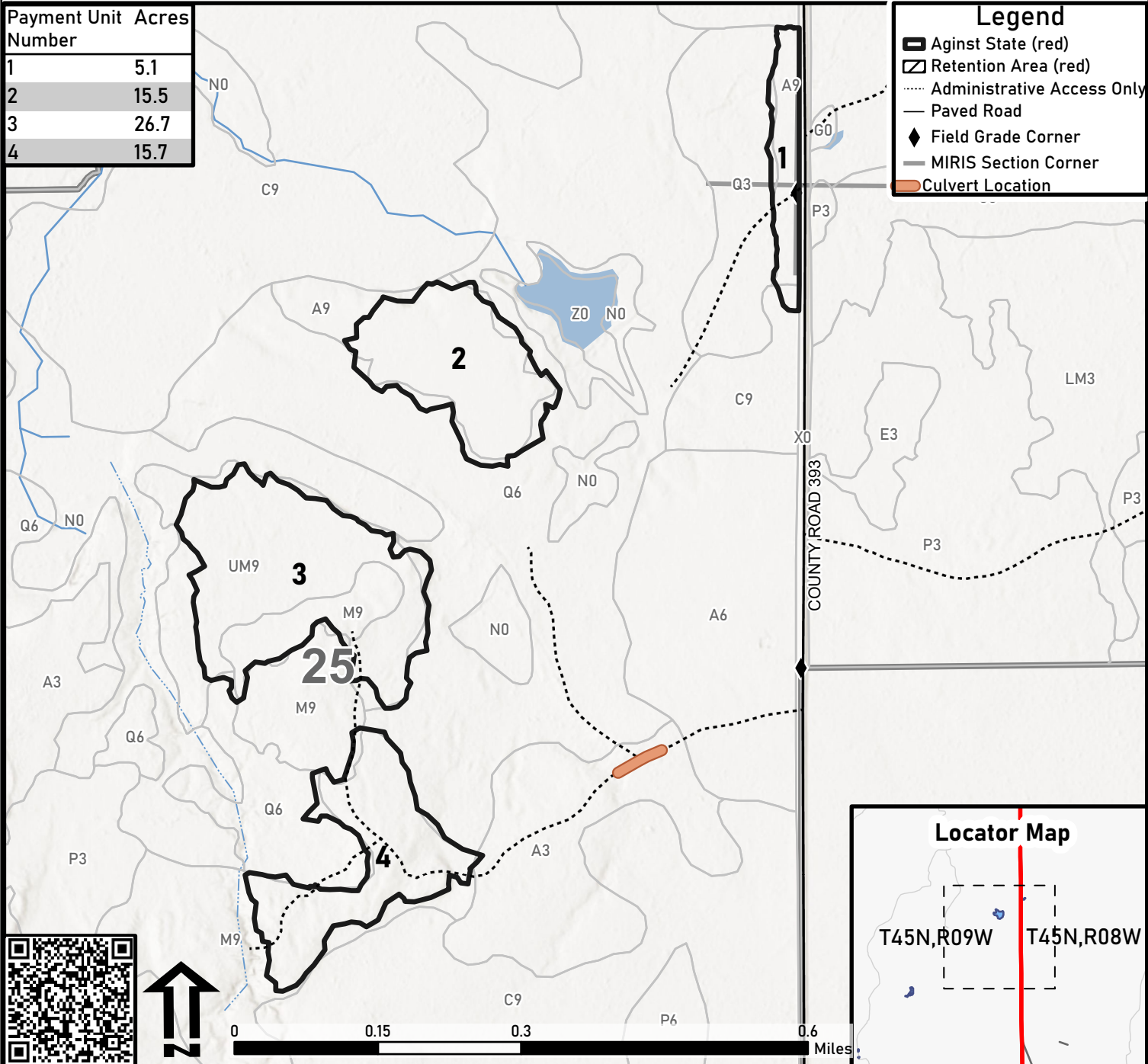
0 = Non Stocked	5 = Pole Timber Medium
1 = Seedling Sapling Poor	6 = Pole Timber Well
2 = Seedling Sapling Medium	7 = Saw Timber Poor
3 = Seedling Sapling Well	8 = Saw Timber Medium
4 = Pole Timber Poor	9 = Saw Timber Well

Borgstrom's Best
63.0 Acres**Legend**

- Against State (red)
- Retention Area (red)
- Administrative Access Only
- Paved Road
- Field Grade Corner
- MIRIS Section Corner
- Culvert Location

Payment Unit Acres

1	5.1
2	15.5
3	26.7
4	15.7

**Locator Map**