

**TIMBER SALE MAP**

This information provided by authority of Part 525, 1994 PA 451, as amended.

Sale Number

**53-018-25**

Date

**05/29/2025**

Forest Management Unit

Pigeon River Country Mgt Unit

County

Otsego

Mapped By: Rekowski

Cruised By: Scaled sale

Scale

**1:23,914**

Page

**1**

Of

**1**

Township

**32N**

Range

**02W /**

Section(s) and

Subdivision(s)

Sec. 12 N1/2NE,SWNE; Sec. 6 W1/2NW; Sec. 7 S1/2NW,NESW,S1/2SW,SESE;

**Cover Type**

A = Aspen	J = Jack Pine	O = Oak	U = Upland Brush
B = Paper Birch	K = Rock	P = Lowland Poplar	UM = Upland Mix Forest
C = Cedar	L = Lowland Brush	Q = Mixed Swamp Conifer	V = Bog or Marsh
D = Treed Bog	LM = Lowland Mix Forest	R = Red Pine	W = White Pine
E = Swamp Hardwoods	M = Maple, Beech, Birch	S = Black Spruce	X = Non Stocked
F = Spruce/Fir	MC = Mixed Conifer	T = Tamarack	Y = Sand
G = Grass	MD = Mixed Deciduous	Z = Water	
H = Hemlock	N = Marsh		

**Density**

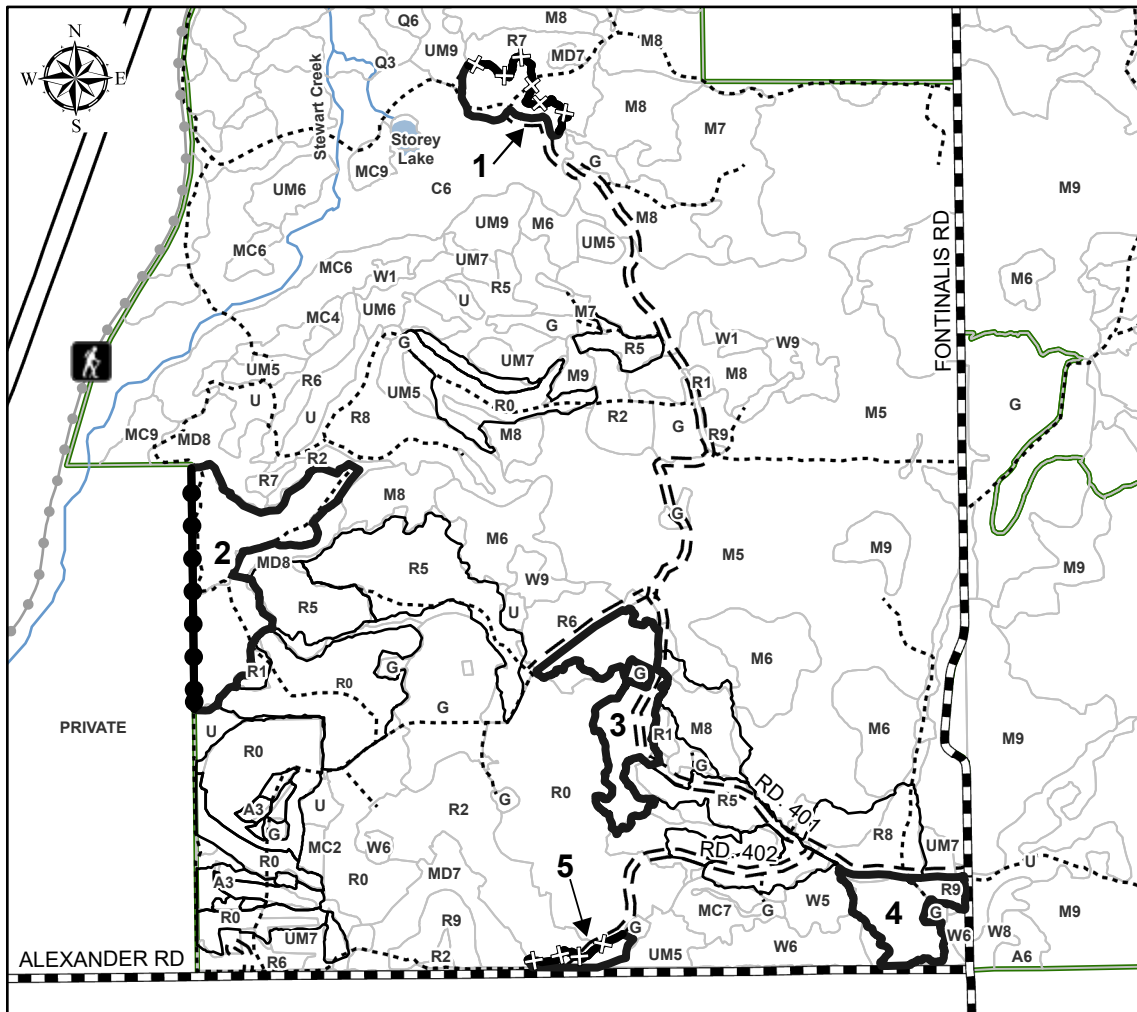
0 = Non Stocked	5 = Pole Timber Medium
1 = Seedling Sapling Poor	6 = Pole Timber Well
2 = Seedling Sapling Medium	7 = Saw Timber Poor
3 = Seedling Sapling Well	8 = Saw Timber Medium
4 = Pole Timber Poor	9 = Saw Timber Well

**Payment Unit Acres**

1	10.1
2	41.9
3	26.1
4	17.6
5	3.5

**Ice-y Hot Pine****99.2 Acres**

0 0.38 0.75 1.5 Miles

**Legend**

- Against State (Red/Pink)
- Against State (Yellow)
- Private Line (Blue)
- Stand Boundary
- Nearby Timber Sale
- Forest Access Route
- Administrative Access Only
- Paved Road
- Government Gravel/Dirt
- Lakes
- Perennial River

**Map Note:**

The boundaries for PU #'s 3-4 are marked with pink paint.  
The northern boundaries of PU #'s 1 and 5 are marked with yellow paint.  
The remaining boundaries against State are marked in red.

Use QR Code to open Map in App

