

ORIGINAL

6555

FIELD NOTES

OF THE SURVEY OF THE

DEPENDENT RESERVE OF THE

NORTH, EAST, AND WEST BOUNDARIES

OF

TOWNSHIP 24 NORTH, RANGE 6 EAST

AND THE

EAST AND NORTH BOUNDARIES

OF

TOWNSHIP 24 NORTH, RANGE 7 EAST

Of the

MICHIGAN

Meridian,

its date of

MICHIGAN.

EXECUTED BY

ROY R. YEAL, U. S. CADASTRAL ENGINEER

ASSISTED BY

WILLIS H. BARDY, U. S. SURVEYOR.

In accordance with the Special Instructions dated May 13, 1927,

and by the United States Surveyor General to govern surveys included in Group

14

which were approved by the Commissioner of the General Land Office, May 15, 1927, and Assignment Instructions dated May 23, 1927.

Survey commenced May 30, 1927.

Survey completed August 23, 1927.

INDEX DIAGRAM.

Township						Range															
1	2	3	4	5	6	7	8	9	10	11	12	13	14	15	16	17	18	19	20	21	22

INDEX DIAGRAM

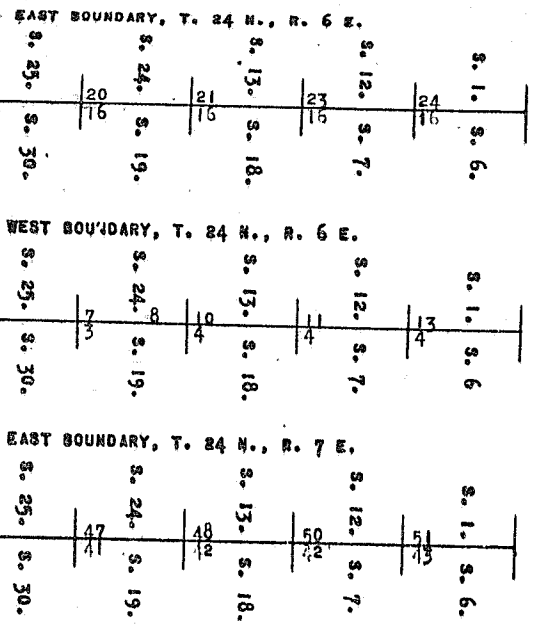
NORTH BOUNDARY, T. 24 N., R. 6 E.

18	36	34	32	30	28
27	27	27	27	25	26
SEC. 6.	SEC. 5.	SEC. 4.	SEC. 3.	SEC. 2.	SEC. 1.

NORTH BOUNDARY, T. 24 W., R. 7 E.

61	59	58	56	55	53
57	57	57	53	53	53
SEC. 6.	SEC. 5.	SEC. 4.	SEC. 3.	SEC. 2.	SEC. 1.

RETRACEMENTS = RED.
TRUE LINES = BLACK.



Independent Resurvey of the N., E., and W. Boundaries of T. 24 N., R. 6 E., and the E. and N. Boundaries of T. 24 N., R. 7 E., Michigan Meridian, Michigan.

Field Notes

Test of Instruments

Survey commenced May 30, 1927, and executed with Buff solar transits Nos. 16728 and 15729; both instruments fully equipped and conforming to the standard

Instrumental specifications adopted by the General Land Office.

I test the adjustments of both instruments and correct all errors. I then test the solar apparatus of each instrument by comparing its indications with a true meridian established by direct observation of the sun.

May 30, 1927, at camp, near the 1 sec. cor. of secs. 23 and 26, T. 24 N., R. 6 E., Mich. Mer., Michigan, in latitude 44° 26' N., and longitude 83° 40' 30" W.

At 8 h. 0m. a. m., app. t. I set of 44° 26' N. on the lat. arcs; 21° 41' 30" N on the decl. arcs; and determine a meridian with the solars of both instruments, which I find to agree; and mark the meridian thus determined by a tack in a peg set firmly in the ground, 10 chs. N.

At apparent noon, with the lat. arcs unchanged, I observe the sun on the meridian; the resulting reading of the decl. arcs is 21° 42' 30" N., which agrees with the computed declination of the sun.

At 4h 0m p. m., app. t. with the latitude arcs, unchanged, I set off 21° 44' 30" N. on the decl. arcs; and determine a meridian with the solar apparatus of each instrument, which I find to agree with the meridian established by the solars in the morning.

Then to test the above indications of the solar apparatus of each instrument, I make a series of three altitude observations of the sun for azimuth, each with the telescope in direct and reversed positions, observing opposite limbs of the sun, and reading the horizontal deflection angles from the peg to the sun:

Chains

INSTR.	TELLSCOPE	SUB.	TYPE.	VERT. ANG.	HORIZ. ANG.	FROM
1st	DIRECT	4h 39m	23° 34'	62° 34'	30"	to left
"	REVERSED	4h 43m	23° 29'	81° 25'	"	"
2nd	DIRECT	4h 41m	23° 31'	20° 01'	59° 45'	to left
"	REVERSED	4h 45m	23° 28'	81° 53'	"	"
3rd	DIRECT	4h 41m	23° 20'	82° 22'	"	to left
"	REVERSED	4h 45m	23° 21'	81° 26'	"	"

By 1st obs., peg bears N. 0° 00' 45" W.
 By 2nd obs., peg bears N. 0° 00' 10" E.
 Head this bearing of peg = N. 0° 00' 12" W.
 Indicated error of solar attachments = 12"

All of the solar observations during the usual hours
 of solar work were within 1' of the true meridian.
 I conclude that the adjustments of both instruments
 are satisfactory.

Dependent Resurvey of the North, East, and West Boundaries
 of T. 24 N., R. 6 E., Mich. Mer. Michigan, as
 surveyed by Lewis Clason, D. S., in 1838.

West Boundary. Commence at the corner of Eps. 23 and 24, E. Egn. 5
 and 6 E.
 Run N. 89° 00' 00" W. 100.00
 Run N. 89° 00' 00" W. 100.00
 Run N. 89° 00' 00" W. 100.00
 Run N. 89° 00' 00" W. 100.00

Run N. 89° 00' 00" W. 100.00
 Run N. 89° 00' 00" W. 100.00
 Run N. 89° 00' 00" W. 100.00
 Run N. 89° 00' 00" W. 100.00

Run N. 89° 00' 00" W. 100.00
 Run N. 89° 00' 00" W. 100.00
 Run N. 89° 00' 00" W. 100.00
 Run N. 89° 00' 00" W. 100.00

Chains

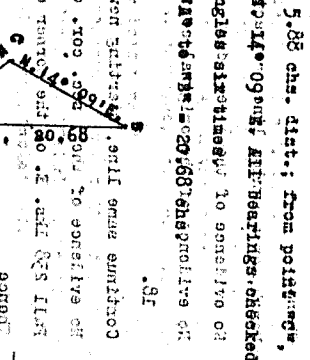
10:00	Thence	run 63.31 = 2nd section corner
10:30	No evidence of the 1 sec. cor.	
10:50	Fall 46 lbs. E. of the true point for the corner of	
	secs. 19, 24, 25, and 30.	
	Thence	
	North, on a random line, retracing bet. secs. 19 and 24,	
	(S. 1.)	
11:22	Top of bluff along the Au Sable River.	
	To make a triangulation across a point in the river to	
	designate this point as "A" and "B" on the	
	north of the river; also lay off a base "A-C", N. 45°	
	08° 40' W., 5.88 chs. dist.; from point "C", point	
	"A" and "B", bearings 24° 09' and 41° 11' checked by	
	repeating angles six times to give 100.00	
	and 11. Distances from "A" to "B" = 20.68; "B" to "C" =	
	31	

Run N. 89° 00' 00" W. 100.00
 Run N. 89° 00' 00" W. 100.00
 Run N. 89° 00' 00" W. 100.00
 Run N. 89° 00' 00" W. 100.00

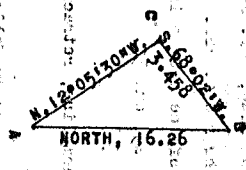
Run N. 89° 00' 00" W. 100.00
 Run N. 89° 00' 00" W. 100.00
 Run N. 89° 00' 00" W. 100.00
 Run N. 89° 00' 00" W. 100.00

Run N. 89° 00' 00" W. 100.00
 Run N. 89° 00' 00" W. 100.00
 Run N. 89° 00' 00" W. 100.00
 Run N. 89° 00' 00" W. 100.00

Run N. 89° 00' 00" W. 100.00
 Run N. 89° 00' 00" W. 100.00
 Run N. 89° 00' 00" W. 100.00
 Run N. 89° 00' 00" W. 100.00



Chains Distance across bay = 16.26 chs.



17.14 Triangulation point on N. shore of bay.

40.03 Fall 49 lks. E. of the true point for the corner of secs.

13, 18, 19, and 24. The true point for the corner of secs.

13, 18, 19, and 24. The true point for the corner of secs.

13, 18, 19, and 24. The true point for the corner of secs.

13, 18, 19, and 24. The true point for the corner of secs.

13, 18, 19, and 24. The true point for the corner of secs.

13, 18, 19, and 24. The true point for the corner of secs.

13, 18, 19, and 24. The true point for the corner of secs.

13, 18, 19, and 24. The true point for the corner of secs.

13, 18, 19, and 24. The true point for the corner of secs.

13, 18, 19, and 24. The true point for the corner of secs.

13, 18, 19, and 24. The true point for the corner of secs.

13, 18, 19, and 24. The true point for the corner of secs.

13, 18, 19, and 24. The true point for the corner of secs.

13, 18, 19, and 24. The true point for the corner of secs.

13, 18, 19, and 24. The true point for the corner of secs.

13, 18, 19, and 24. The true point for the corner of secs.

13, 18, 19, and 24. The true point for the corner of secs.

13, 18, 19, and 24. The true point for the corner of secs.

13, 18, 19, and 24. The true point for the corner of secs.

13, 18, 19, and 24. The true point for the corner of secs.

13, 18, 19, and 24. The true point for the corner of secs.

13, 18, 19, and 24. The true point for the corner of secs.

13, 18, 19, and 24. The true point for the corner of secs.

13, 18, 19, and 24. The true point for the corner of secs.

13, 18, 19, and 24. The true point for the corner of secs.

13, 18, 19, and 24. The true point for the corner of secs.

13, 18, 19, and 24. The true point for the corner of secs.

13, 18, 19, and 24. The true point for the corner of secs.

13, 18, 19, and 24. The true point for the corner of secs.

Proportional distance.

Set an iron post, 3 ft. long, 1 in. diam., 27 ins. in the ground, for reestablished 1/2 sec. cor. of secs. 31 and 36, with brass cap mkt.

A Norway pine, 14 ins. diam., bears S. 69° E., 305 lks., dist. mkt. 1/2 S 1/2 B W.

Corner of fence, bearing S. and W. 190° W., 60 lks. dist. mkt. 1/2 S 1/2 B W.

The true point for the corner of secs. 25, 30, 31, and 36, which is marked by an iron pipe, 1 in. diam., set by a local surveyor, from original bearing cross.

In place of the iron pipe, set a concrete monument, 6 x 6 x 24 ins., 18 ins. in the ground, for reestablished corner of secs. 25, 30, 31, and 36, with brass tablet mkt.

Set a concrete monument, 6 x 6 x 24 ins., 18 ins. in the ground, for reestablished corner of secs. 25, 30, 31, and 36, with brass tablet mkt.

The remains of the original bearing trees

A burned over Norway pine stump, bears S. 63° W., 116 lks., dist., with no marks.

A burned over Norway pine stump, bears N. 25° W., 103 lks., dist., with no marks.

And local bearing trees, set by local surveyor, from original bearing cross.

A black oak, 10 ins. diam., bears S. 44° 30' E., 78 lks., dist., mkt. 1/2 S 1/2 B W. A black oak, 10 ins. diam., bears N. 54° W., 51 lks., dist., mkt. S 25 N B W.

Chains

And new bearing trees

A Jack pine, 10 ins. diam., bears N. 48° E., 194 lbs. dist., mid. T 24 N R 6 E S 30 B T.

A Jack pine, 10 ins. diam., bears S. 5° W., 20 lbs. dist., mid. T 24 N R 5 E S 36 B T. *Good*

Land, level.

Soil, sandy, with thin turf, 3rd rate.

Timber, Jack pine, black oak, and very scattering Norway pine.

Undergrowth, young timber.

and on T. 20 N. on a true line, bet. secs. 25 and 30. Over level land, along W. edge of road; timber and undergrowth to E. and W. of road.

39-95 Proportional distance and set an iron post, 3 ft. long, 1 in. diam., 27 ins. in

board from the ground, for reestablished 1/2 sec. cor. of secs. 25 and 30, with brass cap mid. T 24 N R 5 E S 36 B T.

11. 25 same to corner section 25 S. 30. *Good*

From which

A Jack pine, 8 ins. diam., bears N. 54° 45' E., 108 lbs. dist., mid. T 24 N R 5 E S 36 B T. *SFP*

A black oak, 8 ins. diam., bears N. 66° 15' W., 46 lbs. dist., mid. T 24 N R 5 E S 36 B T. *Good*

79-00 Magnetic power transmission line, bears N. 54° E., and S. 54° W.

179-90 True point for the corner of secs. 19, 24, 25, and 30, which is marked by an iron pipe, 1 in. diam., set by a local surveyor from original bearing trees.

In place of the iron pipe

Set a concrete monument, 6 x 6 x 24 ins., 18 ins. in the ground, for reestablished corner of secs. 19, 24, 25, and 30, with brass tablet mid.

1300' N 24' E
R 5 E R 6 E
S 24 1/2 S 19
S 25 1/2 S 30
1927

The remains of the original bearing trees

A burned over Norway pine stump, bears N. 57° E., 47 lbs. dist., with no marks.

A stump hole and pine roots, bears S. 66° E., 58 lbs. dist. *Good*

A Norway pine stump, burned over, bears N. 57° 30' W., 55 lbs. dist., with no marks. *Good*

and a log bearing tree

A black oak, 10 ins. diam., bears S. 62° E., 204 lbs. dist., mid. T 24 N R 6 E S 30 B T. *SFP*

and new bearing trees

A black oak, 10 ins. diam., bears N. 20° 30' E., 280 lbs. dist., mid. T 24 N R 6 E S 30 B T. *Good*

A black oak, 8 ins. diam., bears S. 8° 30' W., 248 lbs. dist., mid. T 24 N R 5 E S 25 B T. *SFP*

and black oak, 10 ins. diam., bears N. 79° 30' W., 205 lbs. dist., mid. T 24 N R 5 E S 24 B T. *Good*

Land, level.

Soil, sandy, with thin turf, 3rd rate.

Timber, Jack pine and black oak.

Undergrowth, young timber.

N. 0° 33' W., on a true line, bet. secs. 19 and 24. (S.P.)

Over level land, along W. edge of road; timber to E. and W. of road.

Road, bears N. 60° W., and S. 50° E.

Begin descent of 90 ft. over steep N. slope. S. shore of Long Dam Basin, on the La Sable river, bears N. and SE.

N. shore of basin, bears E. and W. Thence over low wet land. The true point for the 1/2 sec. cor. of secs. 19 and 24.

Dependent Resurvey of West Boundary, T. 24 N., R. 6 E.

Chains

as determined from a local bearing tree and an original bearing tree.

At the true point

Set an iron post, 3 ft. long, 1 in. diam., 27 ins. in the ground, for reestablished 1 sec. cor., of secs. 19 and 24, with brass cap and

19 and 24, with brass cap and

S 24 S 19

From which

An original bearing tree

A fallen white pine, 24 ins. diam., bears N. 40° W.,

38 lbs. dist. This tree was identified as an original bearing tree by engineers of the

Consumer's Power Co. while it was standing. Any

marks are now under the trees

And the remains of a local bearing tree, md. by

engineers of the Consumer's Power Co., about 1909, when original evidence was found.

A balsam stump, 10 ins. diam., 6 ft. high, bears

N. 21° 30' W., 23 1/2 lbs. dist., md. N N E.

And new bearing trees

A white pine, 6 ins. diam., bears N. 72° 15' W., 17

lbs. dist., md. S 24 N E.

A white pine, 10 ins. diam., bears S. 89° N., 14 1/2

lbs. dist., md. S 19 N E.

And new bearing trees

On a line, 300 ft. long, bearing N. 0° 42' W., on a true line, bet. secs. 19 and 24, (N. 1/2)

Over low wet land, through scattering timber, partly

dead.

0.88 The S. shore of flowage of the Lord Dam Basin of the

Consumer's Power Co., on the An Sable River, bears

E. and W.

17.14 W. shore of flowage, bears N. 70° E. and S. 60° W.;

enter timber and undergrowth.

Dependent Resurvey of West Boundary, T. 24 N., R. 6 E.

Chains

Creek, 20 lbs. wide, 4 ins. deep, course SW.

The true point for the corner of secs. 15, 18, 19, and

24, as determined from the remains of original bearing trees.

At the true point

Between iron posts, 3 ft. long, 2 ins. diam., 27 ins. in

the ground, for reestablished corner of secs. 15, 18,

19, and 24, with brass cap and

S 24 S 19

R 5 E R 6 E

S 24 S 19

1927

From which

The remains of the original bearing tree

A white pine stump, 28 ins. diam., 22 ins. high,

bears S. 14° W., 74 lbs. dist., with all marks

burned off

A norway pine stump, 24 ins. diam., 24 ins. high,

bears N. 20° 30' W., 83 lbs. dist., with all

marks burned off

And a local bearing tree, md. about 1909, by engineers

of the Consumer's Power Co., who identified original

bearing trees.

A white pine, 10 ins. diam., bears S. 25° W., 34 lbs.

dist., md. S 24 N E.

And new bearing trees

A white pine, 6 ins. diam., bears N. 18° 45' E., 63

lbs. dist., md. R 24 N R 6 E S 10 N E.

A white pine, 9 ins. diam., bears S. 16° 15' W., 52 1/2

lbs. dist., md. W 24 N R 6 E S 19 N E.

A jack pine, 7 1/2 ins. diam., bears S. 72° W., 59 lbs.

dist., md. W 24 N R 5 E S 24 N E.

A norway pine, 7 1/2 ins. diam., bears N. 49° 30' W.,

97 lbs. dist., md. R 24 N R 5 R S 15 N E.

Dependent Resurvey of the West Boundary, T. 24 N., R. 6 E.

Chains	Land, nearly level. Soil, sandy, 3rd rate. Timber, jack pine, black oak, balsam, birch, hemlock, spruce, and Norway pine.
11.00	K. 0° 51' W., on a true line, bet. secs. 13 and 18. Over level land, through timber and undergrowth. 2.25 Log cabin on line.
18.30	Enter low swampy land and dense young poplar and balsam timber, bears N. 70° W., and S. 70° E. Iron, course SE.
39.90	Proportional distance. Set an iron post, 3 ft. long, 1 in. diam., 27 ins. in the ground, for reestablished 1/2 Sec. 9 or sec. 13 and 18, with brass cap mid.
44.50	Leave swampy land, bears N. 70° E. and S. 70° W. Electric Power transmission line, bears N. 25° 30' W., and S. 25° 30' E.
54.40	Enter low swampy land and dense young timber, bears NW and SE.
58.60	Enter low swampy land and dense young timber, bears NW and SE.
71.00	Enter, drains S. 70° E.
79.81	Proportional distance.
99	Set an iron post, 3 ft. long, 2 ins. diam., 29 ins. in the ground, for reestablished corner of secs. 7, 12, 13, and 18, with brass cap mid.

24 N.
 R 5 E
 S 12 E
 T 24 N.
 R 5 E
 S 12 E
 1927

Dependent Resurvey of West Boundary, T. 24 N., R. 6 E.

Chains	Land, level, and mostly swampy. Soil, sandy and clay loam, 3rd rate. Timber, poplar and balsam. Undergrowth, young timber and alder.
5.60	From which A poplar, 5 ins. diam., bears N. 23° 45' E., 61 lbs. dist., mid. T 24 N R 6 E S 7 B T. A poplar, 5 ins. diam., bears S. 82° 30' E., 21 lbs. dist., mid. T 24 N R 6 E S 18 B T. A poplar, 4 ins. diam., bears S. 34° 30' W., 28 lbs. dist., mid. T 24 N R 5 E S 13 B T. A poplar, 3 ins. diam., bears N. 78° 30' W., 11 lbs. dist., mid. T 24 N R 5 E S 12 B T.
39.90	Proportional distance.
56.00	Leave swampy land and dense timber, bears NE. and W. Hence over gently rolling land, through scattering timber and undergrowth.
71.00	Set an iron post, 3 ft. long, 1 in. diam., 27 ins. in the ground, for reestablished 1/2 Sec. 9 or sec. 13 and 18, with brass cap mid.
79.81	Proportional distance.
99	Set an iron post, 3 ft. long, 2 ins. diam., 29 ins. in the ground, for reestablished corner of secs. 7, 12, 13, and 18, with brass cap mid.

24 N.
 R 5 E
 S 12 E
 T 24 N.
 R 5 E
 S 12 E
 1927

Chains

79.81 The corner of secs. 1, 6, 7, and 12, which is a wooden post, 5 x 5 x 24 ins. above ground, badly weathered, with an iron pipe, 1 1/2 x 10 ins. above ground, alongside; and witnessed by the remains of original bearing trees.

Set an iron post, 3 ft. long, 2 ins. diam., 27 ins. in the ground, for reestablished corner of secs. 1, 6, 7, and 12, with brass cap mkt.

From which

The remains of original bearing trees

1. An overturned white pine stump, 8 ins. diam., bears N. 65° 15' E., 21 lbs. dist., with all marks burned off.

2. A white pine stump, 6 ins. diam., 24 ins. high, bears S. 40° E., 15 lbs. dist., with old "B" blaze at foot.

3. A Norway pine stump, 8 ins. diam., 24 ins. high, bears S. 12° W., 28 lbs. dist., with "B" blaze at foot. And new bearing trees

4. Norway pine, 18 ins. diam., bears N. 4° 45' E., 271 lbs. dist., mkt. T 24 N R 6 E S 6 B T.

5. Black oak, 5 ins. diam., bears S. 55° 15' E., 27 lbs. dist., mkt. T 24 N R 6 E S 7 B T.

6. A white oak, 12 ins. diam., bears S. 34° 30' W., 336 lbs. dist., mkt. T 24 N R 5 E S 12 B T.

7. Norway pine, 20 ins. diam., bears N. 4° 30' W., 298 lbs. dist., mkt. T 24 N R 5 E S 1 B T.

Land, level and gently rolling. Soil, sandy, 3rd rate.

Timber, poplar, cedar, black oak, and white oak. Undergrowth, young timber and alder.

Chains

H. 0° 56' W., on a true line, bet. sec. 1 and 6. Over gently rolling land, through very dense timber and light undergrowth.

Leave swamp, bears N. 60° W. and S. 69° W.; thence over rolling land, through dense timber and

of land undergrowth. Set also on line a to runs one

of land undergrowth.

Set an iron post, 3 ft. long, 1 1/2 in. diam., 27 ins. in the ground, for reestablished corner of secs. 1, 6, 7, and 12, with brass cap mkt.

1. A black oak, 11 ins. diam., bears S. 88° 30' W., 114 lbs. dist., mkt. T 24 N R 5 E S 12 B T.

2. A Norway pine stump, 8 ins. diam., 24 ins. high, bears S. 12° W., 28 lbs. dist., with "B" blaze at foot.

3. A Norway pine, 18 ins. diam., bears N. 4° 45' E., 271 lbs. dist., mkt. T 24 N R 6 E S 6 B T.

4. A black oak, 5 ins. diam., bears S. 55° 15' E., 27 lbs. dist., mkt. T 24 N R 6 E S 7 B T.

5. A white oak, 12 ins. diam., bears S. 34° 30' W., 336 lbs. dist., mkt. T 24 N R 5 E S 12 B T.

6. Norway pine, 20 ins. diam., bears N. 4° 30' W., 298 lbs. dist., mkt. T 24 N R 5 E S 1 B T.

Land, level and gently rolling. Soil, sandy, 3rd rate.

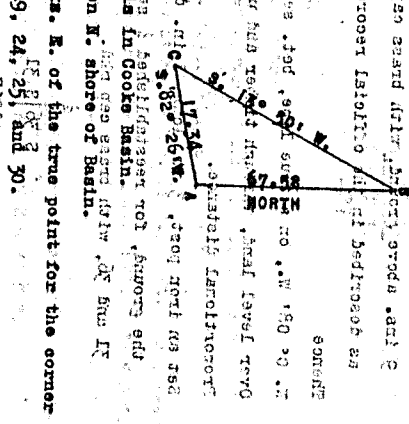
Timber, poplar, cedar, black oak, and white oak. Undergrowth, young timber and alder.

Dependent Reserve of West Boundary, T. 24 N., R. 6 E.

Chains	From which
	The remaining of the original bearing trees
	A stump hole, bears S. 23° E., 43 lbs. dist.
	A jack pine stump, 12 ins. diam., retted by ground, bears S. 54° W., 30 lbs. dist.
	The stump of a white oak, 12 ins. diam., burnt to ground, bears N. 89° 15' E., 15-17 lbs. dist.
	Recorded distance, 15.78 chs. dist.
	The stump of a white oak, 12 ins. diam., burnt to ground (part of trunk on ground), bears S. 89° 11' W., 28.28 chs. dist. (Recorded distance, 28.30 chs.)
	A local corner, an iron pipe, 1 x 6 ins. above ground, bears S. 6° 15' E., 84 lbs. dist. The records of the consumer's power do show that this corner was established without evidence of the original corner, and by incorrect methods. It was kept a and now bearing trees.
	A jack pine, 6 ins. diam., bears N. 55° 15' E., 213 lbs. dist., mid. T. 25 N. R. 6 E. S. 31 P. 36
	A Norway pine, 16 ins. diam., bears S. 69° 45' W., 74 lbs. dist., mid. T. 24 N. R. 6 E. S. 6 B. 1 (this is an iron pipe also mid. B. 5 on S. face.)
	A jack pine, 5 ins. diam., bears S. 52° 15' W., 118 lbs. dist., mid. T. 24 N. R. 5 E. S. 1 B. 1
	A jack pine, 6 ins. diam., bears N. 52° W., 152 lbs. dist., mid. T. 25 N. R. 5 E. S. 36 B. 1
	Land, partly rolling, covered for 1000 sq. ft. by a small stand of spruce, fir, and aspen.
	Undergrowth, young timber and alder.

Dependent Reserve of the East Boundary of T. 24 N., R. 6 E., Mich. Her., Mich. Sur., Surveyed by Lewis Clason, D. S., in 1838.

Chains	East Boundary.
	Beginning at the corner of T. 24 N. and R. 6 E. S. 6 B. 1, on a random line, retracing betw. secs. 31 and 36. No evidence of the original 1/2 sec. cor. set temp. cor. 25, 30, 31, and 36.
2.76	The south shore of Flowage of Cooke Basin on the An Sable river.
40.00	To make a triangulation across Cooke Basin, I set a flag "B" on line on the N. shore of the basin; and set a point "A", South, 19.28 chs., from the corner of sec. 25, 30, 31, and 36; also lay out a base, 19.28 chs., from the corner of sec. 25, 30, 31, and 36, to the point "A".
40.00	Distance from corner of secs. 25, 30, 31, and 36, to flag "B" = 67.52 - 19.28 or 48.24 chs.
48.24	Distance from "A" to "B" = 67.52 chs.
80.04	Point "A" is a level point for the corner of secs. 19, 24, 25, and 30.



Dependent Recovery of East Boundary, T. 24 N., R. 6 E.

Chains	Remarks
40.00	North, on a random line, retracing the sec. 9 and 24. No evidence of the 1/2 sec. cor. Set temp. corner.
40.00	No evidence of the corner of sec. 13 and 24. Set temp. corner.
40.00	North, on a random line, retracing bet. secs. 13 and 18. No evidence of the 1/2 sec. cor.
80.16	Fall 70 lbs. W. of the true point for the corner of sec. 12, 13, and 18. Set temp. corner.
40.00	Thence North, on a random line, retracing bet. secs. 7 and 12. No evidence of the 1/2 sec. cor. Set temp. corner.
80.00	No evidence of the corner of sec. 1, 6, 7, and 12. Set temp. corner.
40.08	North, on a random line, retracing bet. secs. 1 and 6. No evidence of the 1/2 sec. cor. Set temp. corner.
76.15	Fall 78 lbs. W. of the true point for the corner of Tps. 24 and 25. Rgs. 6 and 7 E. Set temp. corner.
40.09	Thence N. 0° 08' W., on a true line, bet. secs. 31 and 36. Over level land, through timber and undergrowth. Proportional distance. Set an iron post, 3 ft. long, 1-in. diam., 27 ins. in the ground, for reestablished 1/2 sec. cor. of secs. 31 and 36, with brass cap mtd.

S 36 S 31
 S 31 S 31
 1927

Dependent Recovery of East Boundary, T. 24 N., R. 6 E.

Chains	Remarks
61.23	Electric power transmission line, bears E. and W. Foot of hill, bears E. and W.; thence through cedar swamp.
61.23	The true point for the corner of sec. 25, 30, 31, and 36, which is marked by an overturned wooden post, set by engineers of the Consumers' Power Co., about 1909, from original bearing trees, and witnessed by local bearing trees.
61.23	In place of wooden post. Set an iron post, 3 ft. long, 2 ins. diam., 27 ins. in the ground, for reestablished corner of sec. 25, 30, 31, and 36, with brass cap mtd.
61.23	Local bearing trees.
61.23	From which local bearing trees
61.23	A fallen spruce, 8 ins. diam., bears N. 43° E., 37 lbs. dist., mtd. S 25 N B T.
61.23	A spruce stump, 8 ins. diam., 5 ft. high, bears N. 80° 30' E., 35 lbs. dist., mtd. S 30 N B T.
61.23	And new bearing trees
61.23	A spruce, 8 ins. diam., bears N. 58° E., 16 lbs. dist., mtd. T 24 N R 7 E S 30 B T.
61.23	A spruce, 8 ins. diam., bears S. 41° 15' E., 21 lbs. dist., mtd. T 24 N R 7 E S 31 B T.

S 25 S 30
 S 30 S 31
 1927

Dependent Recovery of East Boundary, T. 24 N., R. 6 E.

Chains

4 spruce, 6 ins. diam., bears S. 23° 30' W., 35 lbs.
 A spruce, 6 ins. diam., bears N. 6° E. S. 36° E. 20' W., 35 lbs.
 A spruce, 6 ins. diam., bears N. 63° 30' W., 9 lbs.
 Land, level, and hilly.

Timber, jack pine, black oak, cedar, spruce, and tamarack.
 Undergrowth, young timber and alder.
 H. 0° 09' W., on a true line, bet. secs. 25 and 30.
 Over level swampy land, through cedar, spruce, and tamarack timber.

2.76 The south shore of storage of Cooke Basin of the
 Consumer's Power Co., on the Au Sable River, bears
 E. and W.; thence over waters of Basin
 proportional distance.

48.88 The true point for the reestablished 1/2 sec. cor. of secs.
 25 and 30, falls in Cooke Basin.
 N. shore of Cooke Basin, bears N. 60° E. and S. 60° W.
 Set an iron post, 3 ft. long, 1 in. diam., 27 ins. in
 the ground, for witness corner to reestablished 1/2
 sec. cor. of secs. 25 and 30, with brass cap mid.

From which
 A cedar, 8 ins. diam., bears N. 29° 45' E., 26 lbs.
 dist., mid. W C 1 S 30 B T.
 A balsam, 8 ins. diam., bears N. 86° 30' W., 21 lbs.
 dist., mid. W C 1 S 25 B T.
 Thence over level land, through cedar and tamarack swamp
 leave cedar swamp, bears E. and W.; sec. 20 ft. over
 south slope.

56.00
 Leave cedar swamp, bears E. and W.; sec. 20 ft. over
 south slope.

Dependent Recovery of East Boundary, T. 24 N., R. 6 E.

Chains

7.20 Top of ascent; thence over level swampy land, through
 young poplar timber and alder.

90.04 The true point for the corner of secs. 19, 24, 25, and
 30, as perpetuated by engineers of the Consumer's
 Power Co. from original evidence (one original
 bearing tree). The point is now mid. by a square
 wooden post, witnessd by one local bearing tree.
 In place of the wooden post.
 Set an iron post, 3 ft. long, 2 ins. diam., 27 ins. in
 the ground, for reestablished corner of secs. 19,
 24, 25, and 30, with brass cap mid.

2.24
 R 6 E R 7 E
 S 24 S 19
 S 25 S 30
 The remains of a local bearing tree.

48.88 The remains of a local bearing tree.
 A tamarack stump, 12 ins. diam., rotted to ground,
 bears N. 45° E., 64 lbs. dist. 700 yds. of sec.
 and new bearing trees.

A poplar, 3 ins. diam., bears N. 87° E., 45 lbs.
 dist., mid. B T 1 S 30 B T.
 A poplar, 3 ins. diam., bears S. 59° 15' E., 70 lbs.
 dist., mid. B T 1 S 30 B T.
 A poplar, 5 ins. diam., bears S. 41° 30' W., 80 lbs.
 dist., mid. B T 1 S 25 B T.
 A poplar, 6 ins. diam., bears N. 45° W., 123 lbs.
 dist., mid. B T 1 S 24 B T.
 Land, level.
 Soil, sandy and muck, 3rd rate.
 Timber, poplar, cedar, tamarack, and balsam.
 Undergrowth, young timber and alder.

56.00
 Undergrowth, young timber and alder.

Dependent Reserve of East Boundary, T. 24 N. R. 6 E.

Chains

H. 0° 15' E., on a true line, bet. seers. 19 and 24. Over level swampy land, partly flooded, through young timber and undergrowth.

25.30 Enter cedar timber, bears E. and W.

35.80 Leave cedar timber, enter poplar, birch, and tamarack. Proportional distance.

40.04 Proportional distance.

Set an iron post, 3 ft. long, 1 in. diam., 27 ins. in the ground, for reestablished 1/2 sec. cor. of seers. 19 and 24, with brass cap mtd.

From which

A spruce, 4 ins. diam., bears S. 42° E., 45 lbs. dist., mtd. T 25 19 B F.

A white birch, 6 ins. diam., bears S. 16° W., 97 lbs. dist., mtd. T 24 B F.

59.00 Creeks 25 1/2 ins. wide, 4 ins. deep, courses SE.

59.30 Enter very dense young cedar and tamarack. Proportional distance.

80.08 Proportional distance.

Set an iron post, 3 ft. long, 2 ins. diam., 27 ins. in the ground, for reestablished corner of seers. 13, 18, 19 and 24, with brass cap mtd.

Set an iron post, 3 ft. long, 2 ins. diam., 27 ins. in the ground, for reestablished corner of seers. 13, 18, 19 and 24, with brass cap mtd.

Set an iron post, 3 ft. long, 2 ins. diam., 27 ins. in the ground, for reestablished corner of seers. 13, 18, 19 and 24, with brass cap mtd.

Set an iron post, 3 ft. long, 2 ins. diam., 27 ins. in the ground, for reestablished corner of seers. 13, 18, 19 and 24, with brass cap mtd.

Set an iron post, 3 ft. long, 2 ins. diam., 27 ins. in the ground, for reestablished corner of seers. 13, 18, 19 and 24, with brass cap mtd.

Set an iron post, 3 ft. long, 2 ins. diam., 27 ins. in the ground, for reestablished corner of seers. 13, 18, 19 and 24, with brass cap mtd.

Set an iron post, 3 ft. long, 2 ins. diam., 27 ins. in the ground, for reestablished corner of seers. 13, 18, 19 and 24, with brass cap mtd.

Set an iron post, 3 ft. long, 2 ins. diam., 27 ins. in the ground, for reestablished corner of seers. 13, 18, 19 and 24, with brass cap mtd.

Set an iron post, 3 ft. long, 2 ins. diam., 27 ins. in the ground, for reestablished corner of seers. 13, 18, 19 and 24, with brass cap mtd.

Set an iron post, 3 ft. long, 2 ins. diam., 27 ins. in the ground, for reestablished corner of seers. 13, 18, 19 and 24, with brass cap mtd.

Set an iron post, 3 ft. long, 2 ins. diam., 27 ins. in the ground, for reestablished corner of seers. 13, 18, 19 and 24, with brass cap mtd.

Set an iron post, 3 ft. long, 2 ins. diam., 27 ins. in the ground, for reestablished corner of seers. 13, 18, 19 and 24, with brass cap mtd.

Set an iron post, 3 ft. long, 2 ins. diam., 27 ins. in the ground, for reestablished corner of seers. 13, 18, 19 and 24, with brass cap mtd.

Set an iron post, 3 ft. long, 2 ins. diam., 27 ins. in the ground, for reestablished corner of seers. 13, 18, 19 and 24, with brass cap mtd.

Set an iron post, 3 ft. long, 2 ins. diam., 27 ins. in the ground, for reestablished corner of seers. 13, 18, 19 and 24, with brass cap mtd.

Set an iron post, 3 ft. long, 2 ins. diam., 27 ins. in the ground, for reestablished corner of seers. 13, 18, 19 and 24, with brass cap mtd.

Set an iron post, 3 ft. long, 2 ins. diam., 27 ins. in the ground, for reestablished corner of seers. 13, 18, 19 and 24, with brass cap mtd.

A spruce, 8 ins. diam., bears N. 18° 15' W., 20 lbs. dist., mtd. T 24 N R 6 E S 13 B F.

Dependent Reserve of East Boundary, T. 24 N. R. 6 E.

Chains

Land, level. Soil, much, 3rd stage. Timber, cedar, tamarack, poplar, birch, and balsam. Undergrowth, young timber and alder.

H. 0° 15' E. on a true line, bet. seers. 13 and 18.

Over level land, through cedar and tamarack swamp and dense undergrowth.

15.00 Leave swamp, bears E. and W.; beginning of 90 ft. slope over E. slope, with top 2 to the west.

21.70 Top of ascent, thence over gently rolling land, through poplar, birch and black oak timber, and light undergrowth.

40.04 Proportional distance.

Set an iron post, 3 ft. long, 1 in. diam., 27 ins. in the ground, for reestablished 1/2 sec. cor. of seers. 13 and 18, with brass cap mtd.

From which

A jack pine, 8 ins. diam., bears N. 40° 15' E., 254 lbs. dist., mtd. T 24 B F.

A spruce, 8 ins. diam., bears N. 51° 45' W., 187 lbs. dist., mtd. T 25 B F.

The true point for the corner of seers. 7, 12, 13, and 18, which is marked by an wooden post, 3 x 3 x 24 ins. bearing trees of which remains are still in existence.

In place of the wooden post, the level of the ground, for reestablished corner of seers. 7, 12, 13, and 18, with brass cap mtd.

Set an iron post, 3 ft. long, 2 ins. diam., 27 ins. in the ground, for reestablished corner of seers. 7, 12, 13, and 18, with brass cap mtd.

Set an iron post, 3 ft. long, 2 ins. diam., 27 ins. in the ground, for reestablished corner of seers. 7, 12, 13, and 18, with brass cap mtd.

Set an iron post, 3 ft. long, 2 ins. diam., 27 ins. in the ground, for reestablished corner of seers. 7, 12, 13, and 18, with brass cap mtd.

Set an iron post, 3 ft. long, 2 ins. diam., 27 ins. in the ground, for reestablished corner of seers. 7, 12, 13, and 18, with brass cap mtd.

Set an iron post, 3 ft. long, 2 ins. diam., 27 ins. in the ground, for reestablished corner of seers. 7, 12, 13, and 18, with brass cap mtd.

Set an iron post, 3 ft. long, 2 ins. diam., 27 ins. in the ground, for reestablished corner of seers. 7, 12, 13, and 18, with brass cap mtd.

Set an iron post, 3 ft. long, 2 ins. diam., 27 ins. in the ground, for reestablished corner of seers. 7, 12, 13, and 18, with brass cap mtd.

Set an iron post, 3 ft. long, 2 ins. diam., 27 ins. in the ground, for reestablished corner of seers. 7, 12, 13, and 18, with brass cap mtd.

Set an iron post, 3 ft. long, 2 ins. diam., 27 ins. in the ground, for reestablished corner of seers. 7, 12, 13, and 18, with brass cap mtd.

Set an iron post, 3 ft. long, 2 ins. diam., 27 ins. in the ground, for reestablished corner of seers. 7, 12, 13, and 18, with brass cap mtd.

Set an iron post, 3 ft. long, 2 ins. diam., 27 ins. in the ground, for reestablished corner of seers. 7, 12, 13, and 18, with brass cap mtd.

Set an iron post, 3 ft. long, 2 ins. diam., 27 ins. in the ground, for reestablished corner of seers. 7, 12, 13, and 18, with brass cap mtd.

Set an iron post, 3 ft. long, 2 ins. diam., 27 ins. in the ground, for reestablished corner of seers. 7, 12, 13, and 18, with brass cap mtd.

Set an iron post, 3 ft. long, 2 ins. diam., 27 ins. in the ground, for reestablished corner of seers. 7, 12, 13, and 18, with brass cap mtd.

Set an iron post, 3 ft. long, 2 ins. diam., 27 ins. in the ground, for reestablished corner of seers. 7, 12, 13, and 18, with brass cap mtd.

Set an iron post, 3 ft. long, 2 ins. diam., 27 ins. in the ground, for reestablished corner of seers. 7, 12, 13, and 18, with brass cap mtd.

Chains

R 24 N
 S 6 E R 7 E
 S 12 S 7 E
 S 13 S 18
 1927

From which

The remains of original bearing trees

A fallen jack pine, 12 ins. diam., bears N. 86° E., 30 lbs. dist., with a detached slab on which are 31 old blades burnt over.

A fragment of a jack pine stump, bears S. 65° 30' E., 21 lbs. dist., with part of "B-2" blaze.

A stump hole, bears S. 71° W., 70 lbs. dist.

A fallen jack pine, 8 ins. diam., bears N. 59° W., 40 lbs. dist., with old "B-2" blaze.

And local bearing trees

A jack pine, 10 ins. diam., bears N. 81° E., 33 lbs. dist., mid. H.B. P.

A jack pine, 6 ins. diam., bears S. 61° W., 57 lbs. dist., mid. H.B. P.

And new bearing trees

Q.A. jack pine, 10 ins. diam., bears N. 24° E., 98 lbs. dist., mid. R. 24 N R. 7 E S. 7 B P.

Q.A. jack pine, 8 ins. diam., bears S. 98° E., 52 lbs. dist., mid. R. 24 N R. 7 E S. 18 B P.

A jack pine, 8 ins. diam., bears S. 98° 30' W., 50 lbs. dist., mid. R. 24 N R. 6 E S. 13 B P.

Q.A. jack pine, 7 ins. diam., bears N. 54° W., 95 lbs. diam., level and gently rolling.

Land, level and gently rolling.

Soil, mud, 3rd rate in swampy sandy, substrate on high ground.

Specialized vegetation, mostly spruce and spruce.

Timber, jack-pine, black oak, cedar, tamarack, and spruce.

Undergrowth, young timber and alder.

Chains

N. 0° 17' E., on a true line, bet. secds. 7 and 12.

Over level land, through timber and light undergrowth. Road, bears N. and N. E. 12 S. 18 S. 1927

Proportional distance.

Set an iron post, 33 lbs. long, 1 in. diam., 27 ins. in the ground, for reestablished corner of secds. of secds. 7 and 12, with brass cap mid. dist.

Proportional distance.

From which

A jack pine, 9 ins. diam., bears S. 71° W., 226 lbs. dist., mid. S. 12 B P.

A local corner, a wooden post, 3 x 3 x 24 ins. above ground, bears S. 28° 15' W., 25 lbs. dist. This local corner apparently was established by proportional measurement bet. the original corner of secds. 7, 12, 13, and 18, and a local corner of Tps. 24 and 25 N., Rgs. 6 and 7 E. The latter corner was found not to agree with original evidence, therefore the local corner, based upon it were disregarded.

Proportional distance.

Set an iron post, 33 lbs. long, 2 ins. diam., 27 ins. in the ground, for reestablished corner of secds. 1, 6, 7, and 12, with brass cap mid. dist.

Proportional distance.

Set an iron post, 33 lbs. long, 1 in. diam., 27 ins. in the ground, for reestablished corner of secds. 7 and 12, with brass cap mid. dist.

Proportional distance.

Set an iron post, 33 lbs. long, 1 in. diam., 27 ins. in the ground, for reestablished corner of secds. 7 and 12, with brass cap mid. dist.

Proportional distance.

Set an iron post, 33 lbs. long, 1 in. diam., 27 ins. in the ground, for reestablished corner of secds. 7 and 12, with brass cap mid. dist.

Proportional distance.

Set an iron post, 33 lbs. long, 1 in. diam., 27 ins. in the ground, for reestablished corner of secds. 7 and 12, with brass cap mid. dist.

Dependent Reserve of East Boundary, E. 24 R. 6 E.

67.14	Road, bears N. 60° W. and S. 60° E.	From which A Norway pine, 14 ins. diam., bears N. 26° 30' E., dist., mtd. T 24 N R 7 E S 6 B 2 W, 91 lks. A Norway pine, 14 ins. diam., bears S. 26° 30' E., dist., mtd. T 24 N R 7 E S 7 B F. A Norway pine, 14 ins. diam., bears S. 45° 15' W., dist., mtd. T 24 N R 6 E S 12 B F. A Norway pine, 14 ins. diam., bears N. 21° W., 90 lks. dist., mtd. T 24 N R 6 E S 1 B F. Land, gently rolling Soil, sandy, 3rd rate. Undergrowth, young timber.
69.10	Road, bears N. 60° W. and S. 60° E.	From which A Norway pine, 18 ins. diam., bears N. 77° 45' W., dist., mtd. T 24 N R 7 E S 1 B F. A local corner, a wooden post, 3 x 3 x 18 ins. above ground, bears S. 34° 30' W., 70 lks. dist. See note on local 1/2 sec. cor. of secs. 7 and 12, above.

Dependent Reserve of East Boundary, E. 24 R. 6 E.

76.29	The true point for the cor. of Tps. 24 and 25 N., Rgs. 6 and 7 E., which is marked by the point of an old stake, uncovered 4 ins. below the surface of the ground, and checked by line trees to the north and west.	At the true point A 6' x 6' concrete monument, 6' x 6' x 24 ins., 18 ins. in also the ground, for reestablished corner of Tps. 24 and 25 N., Rgs. 6 and 7 E., with brass tablet mtd.
75.85	An Sable and Northwestern Railroad, bears N. 60° 45' W., and S. 60° 45' E.	From which A jack pine, 10 ins. diam., bears N. 29° 30' E., 150 lks. dist., mtd. T 25 N R 7 E S 31 B F. A jack pine, 8 ins. diam., bears S. 25° 45' E., 209 lks. dist., mtd. T 24 N R 7 E S 6 B F. A jack pine, 8 ins. diam., bears S. 53° W., 232 lks. dist., mtd. T 24 N R 6 E S 1 B F. A jack pine, 7 ins. diam., bears N. 40° 15' W., 121 lks. dist., mtd. T 25 N R 6 E S 36 B F. The stump hole and roots of an original line tree, a jack pine, bears N. 0° 06' E., 25.29 chs. dist. (Distance agrees with record.) The stump hole and roots of an original line tree, a jack pine, bears N. 89° 32' W., 38.79 chs. dist., 0A (Record distance, 18.76 chs.) These line trees were recorded as being 10 ins. and 9 ins., respectively, in diameter. These were identified mainly by the process of elimination; but at each place, the evidence of the existence of the trees was un- mistakable; and the close agreement with the record

Dependent Resurvey of East Boundary, T. 24 N., R. 6 E.

Chains

together with the fact that no other trees could be found in each vicinity, made the identification positive.

A local corner, a wooden post, 4 x 4 x 30 ins. above ground, bears S. 42° W., 82 lbs. dist. Land, nearly level. Soil, sandy, 3rd rate. Timber, jack pine.

Dependent Resurvey of the North Boundary of T. 24 N., R. 6 E., sec. 6 N., T. 24 N., R. 6 E., Surveyed by Lewis Clason, in 1836.

Beginning at the reestablished corner of Tps. 24 and 25 N., Rgs. 6 and 7 E.

West, on a random line, retracing bet. secs. 1 and 36. (S. 1/2).

18.79 Fall 15 1/2 lbs. N. of the stump hole of a jack pine tree.

40.01 Fall 35 lbs. N. of the true point for the 1/2 sec. cor. of secs. 1 and 36.

Thence West, on a random line, retracing bet. secs. 1 and 36. (S. 1/2).

40.07 Fall 5 1/2 lbs. N. of the true point for the corner of secs. 1, 2, 35, and 36.

Thence West, on a random line, retracing bet. secs. 2 and 35.

40.25 Fall 4 1/2 lbs. N. of the true point for the 1/2 sec. cor. of secs. 2 and 35.

Thence West, on a random line, retracing bet. secs. 2 and 35.

40.06 Fall 3 1/2 lbs. N. of the true point for the cor. of secs. 2 and 35.

Thence West, on a random line, retracing bet. secs. 2 and 35.

Thence West, on a random line, retracing bet. secs. 2 and 35.

Dependent Resurvey of the North Boundary, T. 24 N., R. 6 E.

Chains

West, on a random line, retracing the S. bdy. of sec. 34, T. 25 N., R. 6 E.

No evidence of the 1/2 sec. cor. of secs. 3 and 4, T. 24 N., R. 6 E.

19.82 Fall 7 1/2 lbs. N. of the true point for the closing cor. of secs. 3 and 4, T. 24 N., R. 6 E.

80.07 Fall 7 1/2 lbs. N. of the true point for the corner of secs. 33 and 34, T. 25 N., R. 6 E.

Thence West, on a random line, retracing the S. bdy. of sec. 33, T. 25 N., R. 6 E.

40.00 No evidence of the 1/2 sec. cor. of secs. 4, 5, 32, and 33.

40.00 Fall 6 7/8 lbs. N. of the true point for the corner of secs. 4, 5, 32, and 33.

Thence West, on a random line, retracing the S. bdy. of sec. 32, T. 25 N., R. 6 E.

No evidence of the 1/2 sec. cor. of secs. 5 and 6, T. 24 N., R. 6 E.

19.89 Fall 10 1/2 lbs. N. of the true point for the closing corner of secs. 5 and 6, T. 24 N., R. 6 E.

40.00 Fall 10 1/2 lbs. N. of the true point for the corner of secs. 5 and 6, T. 24 N., R. 6 E.

Thence West, on a random line, retracing the S. bdy. of sec. 31, T. 25 N., R. 6 E.

19.91 Fall 3 7/8 lbs. N. of the true point for the 1/2 sec. cor. of sec. 31.

Thence West, on a random line, retracing the S. bdy. of sec. 31. (S. 1/2)

24.3 Fall 29 lbs. N. of the stump of a white oak tree.

19.18 Fall 50 lbs. N. of the reestablished corner of Tps. 24 and 25 N., Rgs. 5 and 6 E.

Dependent Reserve of North Boundary, T. 24 N., R. 6 E.

Chains

Beginning at the reestablished corner of Twp. 24 and

S. 89° 32' W. on a true line, bet. secs. 1 and 36. (R. 4).
Over level open land.

0.76 An. Sable and Northwestern Railroad, bears N. 60° 45' W. and S. 60° 45' E.

2.09 Enter timber, bears N. 60° W. and S. 60° E.
Road, bears N. 60° W. and S. 60° E.

15-70 Road, bears N. 60° W. and S. 60° E.
The stump hole and roots of a jack pine line tree.

18-79 The stump hole and roots of a jack pine line tree.
40.01 The true point for the 1 sec. cor. of secs. 1 and 36, which is marked by a gum barrel, 1 in. diam., projecting 10 ins., above ground, which is checked by an original bearing tree.

In place of the gum barrel.
Set an iron post, 3 ft. long, 1 in. diam., 27 ins. in the ground, for reestablished 1 sec. cor. of secs. 1 and 36, with brass cap mkt. 1 1/2 x 1 1/2 in.

The remains of an original bearing tree
A Norway pine stump, 18 ins. diam., 18 ins. high, bears N. 75° 45' W., 67 lbs. dist. with old "B" plates.

And new bearing trees.
A jack pine, 7 ins. diam., bears N. 7° 15' W., 154 lbs. dist., mkt. 1 x 3/8 B T.

A jack pine, 5 ins. diam., bears S. 50° 15' E., 98 lbs. dist., mkt. 1/2 x 1/2 B T.

Thence
S. 89° 16' W. on a true line, bet. secs. 1 and 36. (R. 4).
To corner bearing tree and to N. end of line 81.28

S. 89° 16' W. on a true line, bet. secs. 1 and 36. (R. 4).
To corner bearing tree and to N. end of line 81.28

S. 89° 16' W. on a true line, bet. secs. 1 and 36. (R. 4).
To corner bearing tree and to N. end of line 81.28

S. 89° 16' W. on a true line, bet. secs. 1 and 36. (R. 4).
To corner bearing tree and to N. end of line 81.28

S. 89° 16' W. on a true line, bet. secs. 1 and 36. (R. 4).
To corner bearing tree and to N. end of line 81.28

S. 89° 16' W. on a true line, bet. secs. 1 and 36. (R. 4).
To corner bearing tree and to N. end of line 81.28

S. 89° 16' W. on a true line, bet. secs. 1 and 36. (R. 4).
To corner bearing tree and to N. end of line 81.28

Dependent Reserve of North Boundary, T. 24 N., R. 6 E.

Chains

5.10 Road, bears N. and S.
40.07 The true point for the corner of secs. 1, 2, 35, and 36, as determined from the remains of the original bearing trees.

At the true point
Set a concrete monument, 6 x 6 x 24 ins., 18 ins. in the ground, for reestablished corner of secs. 1, 2, 35, and 36, with brass tablet mkt.

R 25 N R 6 E
S 35 1/2 S 36
R 24 W
1927

The remains of the original bearing trees
An overturned Norway pine stump, 16 ins. diam., bears N. 54° 45' E., 110 lbs. dist.; all marks burnt and weathered off.

The roots of a Norway pine, bear N. 13° W., 88 lbs. dist., mkt. 1/2 x 1/2 B T.

And new bearing trees
A jack pine, 8 ins. diam., bears N. 51° E., 213 lbs. dist., mkt. 1/2 x 1/2 B T.

A jack pine, 7 ins. diam., bears S. 45° 30' E., 106 lbs. dist., mkt. 1/2 x 1/2 B T.

A jack pine, 6 ins. diam., bears S. 82° 15' W., 85 lbs. dist., mkt. 1/2 x 1/2 B T.

A jack pine, 6 1/2 ins. diam., bears N. 66° 30' W., 212 lbs. dist., mkt. 1/2 x 1/2 B T.

A jack pine, 4 x 4 x 36 ins., above level corner, a wooden post, 4 x 4 x 36 ins., above level, set in ground, two eyes: 1/2 x 1/2 B T.

Soil, sandy, 3rd table.

Timber, jack pine.

Timber, jack pine.

Timber, jack pine.

Timber, jack pine.

Timber, jack pine.

Chains	Description
5.89	24' W., on a true line, bet. secs. 2 and 35. (E. 1)
	Over level land, through scattering timber.
8.40	W. shore of a shallow pond, bears N. and S.
14.50	W. shores of pond, bears N. 30° E., and S. 30° W.
36.00	Road, bears N. 70° E. and S. 70° W.
40.25	The true point for the 1 sec. cor. of secs. 2 and 35, as determined from the stumps of an original bearing tree.
	At the true point
	Set an iron post, 3 ft. long, 1 in. diam., 27 ins. in the ground, for reestablished 1/2 sec. cor. of secs. 2 and 35, with brass cap mtd.
	From which
	The remains of an original bearing tree.
	A Norway pine stump, 20 ins. diam., 15 ins. high, bears N. 74° W., 145 lbs. dist., with old "B" blaze.
	And new bearing trees
	A black oak, 5 ins. diam., bears N. 81° 30' E., 246 lbs. dist., mtd. 1/2 S 35 B E.
	A jack pine, 8 ins. diam., bears S. 20° 30' W., 174 lbs. dist., mtd. 1/2 S 2 B W.
	Thence
	S. 59° 33' W. on a true line, bet. secs. 2 and 35. (W. 1)
	Over level land, through scattering timber.
	Enter swampy land and dense undergrowth, bears N. 70° E. and SW.
13.00	Leave swamp and dense undergrowth, bears S. 60° E., and N. 70° W.; thence over gently rolling land, through scattering timber.
17.90	Road, bears N. 75° W. and S. 75° E.

Chains	Description
10.05	The true point for the corner of secs. 2, 3, 34, and 35, which is marked by an oak post, 3 x 3 x 24 ins. above ground. A badly weathered pine post, 3 x 3 x 24 ins. was found on the ground alongside the oak post. The post is apparently a perpetuation of the original corner, and is checked by remains of the original bearing trees.
	In place of the oak post
	Set an iron post, 3 ft. long, 2 ins. diam., 27 ins. in the ground, for reestablished corner of secs. 2, 3, 34, and 35, with brass cap mtd.
	From which
	The remains of the original bearing trees
	A fallen jack pine, 8 ins. diam., bears N. 67° 30' E., 107 lbs. dist., with all marks burned and weathered off.
	A stump hole, bears N. 56° W., 234 lbs. dist.
	And new bearing trees
	A black oak, 5 ins. diam., bears N. 81° 15' E., 296 lbs. dist., mtd. 1/2 S 35 B E.
	A black oak, 7 ins. diam., bears S. 26° 15' E., 153 lbs. dist., mtd. 1/2 N 6 E S 2 B W.
	Thence
	A jack pine, 6 ins. diam., bears S. 42° 15' W., 248 lbs. dist., mtd. 1/2 N 6 E S 3 B W.
	A Norway pine, 14 ins. diam., bears N. 18° 45' W., 213 lbs. dist., mtd. 1/2 S 35 B E.
	Also
	Level and gently rolling, enter swampy land and dense undergrowth, willow and alder scattering

Dependent Reservey of North Boundary, T. 24 N., R. 6 E.

Chains

S. 89° 29' W., on a true line, on the S. bdy. of sec. 34, R. 25 N., R. 6 E.

Over gently rolling land, through scattering timber.

0-50 Road, bears S. 89° 30' W., and N. 85° E.

39-91 Proportional distance.

Set an iron post, 3 ft. long, 1 in. diam., 42 ins. in the ground, in road, for 1 sec. cor. of sec. 3, T. 24 N., R. 6 E., with brass cap mkt.

From which
1927

A forked jack pine, 14 ins. diam., bears S. 44° 15' E., 160 lbs. dist., mkt. 1 S 3 B P.

A jack pine, 3 ins. diam., bears S. 23° W., 162 lbs. dist., mkt. 1 S 3 B P.

40-04 Proportional distance

Set an iron post, 5 ft. long, 2 ins. diam., 42 ins. in the ground, in road, for reestablished 1/2 sec. cor. of sec. 34, T. 25 N., R. 6 E., with brass cap mkt.

From which
1927

From which

Set a fork pine, 8 ins. diam., bears N. 27° 07' E., 303 lbs. dist., mkt. 1 S 34 B P.

Set a birch oak, 8 ins. diam., bears N. 82° 30' E., 288 lbs. dist., mkt. 1 S 34 B P.

The corner falls near the intersection of center lines of roads bearing E. and W., and N. and S.

Open land, begins to W. of road, edge bears N. 60° 00' W., 60 ins. dist., mkt. 1 S 34 B P.

Cultivated fields begin to N. and S. of road.

The true point for the closing corner of sec. 3 and 4, T. 24 N., R. 6 E. At this point I uncover the badly decayed point of an old wooden post, 6 ins. under the surface of the ground.

Dependent Reservey of North Boundary, T. 24 N., R. 6 E.

Chains

At the true point

Set an iron post, 5 ft. long, 2 ins. diam., 38 ins. in the ground, 10 lbs. north of road bed, for reestablished closing corner of sec. 3 and 4, with brass cap mkt.

From which
1927

Set an iron post, 5 ft. long, 2 ins. diam., 38 ins. in the ground, 10 lbs. north of road bed, for reestablished closing corner of sec. 3 and 4, with brass cap mkt.

From which
1927

Decayed roots, bear S. 12° E., 32 lbs. dist. and a new bearing tree

An elm, 8 ins. diam., bears S. 8° 15' W., 228 lbs. dist., mkt. 1 S 34 B P.

The true point for the corner of sec. 33 and 34, T. 25 N., R. 6 E., which is marked by 3 small stones, buried in the ground in road, 10 lbs. north of roadway, and pointed out to me by A. R. Smith, the owner of adjoining property as a perpetuation of the original cor. The point is checked by decayed roots at the recorded positions of the original bearing trees.

At the true point

Set a concrete monument, 6 x 6 x 24 ins., in the ground, in road, for reestablished corner of sec. 33 and 34, with brass tablet mkt.

From which
1927

Decayed roots, bear N. 78° E., 18 lbs. dist.

Decayed roots, bear N. 78° E., 45 lbs. dist.

From which
1927

Decayed roots, bear N. 78° E., 18 lbs. dist.

Decayed roots, bear N. 78° E., 45 lbs. dist.

From which
1927

Decayed roots, bear N. 78° E., 18 lbs. dist.

Decayed roots, bear N. 78° E., 45 lbs. dist.

Dependent Resurvey of North Boundary, T. 24 N., R. 6 E.

Chains

And new bearing trees

12.80 A white pine, 24 ins. diam., bears E. 6° 38' E., 505 lbs. dist., mtd. # 25 N R 6 E S 34 B F.

14.70 A white pine, 14 ins. diam., bears E. 25° W., 502 lbs. dist., mtd. # 25 N R 6 E S 33 B F.

Land, gently rolling.
Soil, sandy, 3rd rate.
Timber, jack pine and black oak.

S. 89° 31' W., on a true line, along the S. bdy. of sec. 33, E. 25° W., R. 6 E.

Over gently rolling land, along road, cultivated field to N. of road.

2.00 House of A. R. Smith, bears South, 3 chs. dist.

2.30 End of road, enter cultivated field, bears N. and S. Leave field, bears N. and S.; enter timber and undergrowth.

39.88 Proportional distance.

Set an iron post, 3 ft. long, 1 in. diam., 27 ins. in the ground, for $\frac{1}{2}$ sec. cor. of sec. 4, T. 24 N., R. 6 E. with brass cap mtd.

$\frac{1}{2}$ S 4

From which 35 2 0 0 ... bears S. 11° E., 20 lbs. dist., mtd. # 5 4 B F.

A poplar, 3 ins. diam., bears S. 44° E., 49 lbs. dist., mtd. # 5 4 B F.

Proportional distance.
Set an iron post, 3 ft. long, 1 in. diam., 27 ins. in the ground, for reestablished $\frac{1}{2}$ sec. cor. of sec. 33, E. 25° W., R. 6 E., with brass cap mtd.

$\frac{1}{2}$ S 33

Dependent Resurvey of North Boundary, T. 24 N., R. 6 E.

Chains

From which 35 2 0 0 ... bears N. 8° 30' E., 22 lbs. dist., mtd. # 5 3 B F.

A poplar, 3 ins. diam., bears N. 31° E., 112 lbs. dist., mtd. # 5 3 B F.

The true point for the corner of sec. 4, T. 24 N., R. 6 E. At this point I uncover the badly decayed foot of a wooden post, apparently a part of the original corner post. The position is checked by the stump of the original bearing trees.

At the true point
Set a concrete monument, 6 x 6 x 24 ins., 22 ins. in the ground, at the south end of a graded road, bearing north for reestablished corner of sec. 4, T. 24 N., R. 6 E. with brass tablet mtd.

From which 35 2 0 0 ... bears N. 43° 15' E., 88 lbs. dist., mtd. with brass cap.

The remains of the original bearing trees:
A white pine stump, 20 ins. diam., 24 ins. high, bears N. 43° 15' E., 88 lbs. dist., mtd. with brass cap.

A Norway pine stump, 14 ins. diam., 18 ins. high, bears N. 50° 15' W., 118 lbs. dist., mtd. with brass cap.

And new bearing trees:
A white oak, 6 ins. diam., bears N. 37° 15' E., 76 lbs. dist., mtd. # 25 N R 6 E S 33 B F.

A Norway pine, 9 ins. diam., bears N. 34° W., 157 lbs. dist., mtd. # 25 N R 6 E S 32 B F.

A poplar, 6 ins. diam., bears S. 79° 30' E., 107 lbs. dist., mtd. # 24 N R 6 E S 4 B F.

A poplar, 4 ins. diam., bears S. 22° 45' W., 97 lbs. dist., mtd. # 24 N R 6 E S 5 B F.

Dependent Resurvey of North Boundary, T. 24 N., R. 6 E.

Chains

A local corner, an iron pipe, 1 1/2 x 10 ins. above ground, 32, T. 25 N., R. 6 E.

Soil, clay loam and compact sand, 2nd rate. Timber, oak, poplar, and jack-pines. Undergrowth, young timber and alder.

5. 89° 15' W., on a true line, along the S. hdy. of sec. 32, T. 25 N., R. 6 E.

Over gently rolling land, across road.

Enter timber and undergrowth.

1.10 Dm road, bears S. and NE.

3.00 Enter swamp and dense undergrowth, bears N. and S.

14.00 Leave swamp, bears N. and S.; thence over gently rolling open land.

17.50 Enter tamarack swamp and dense undergrowth.

31.00 Leave swamp, bears N. and S.; thence over rolling land, through timber and undergrowth.

39.90 Proportional distance.

Set an iron post, 3 ft. long, 1 in. diam., 27 ins. in the ground, for 1 sec. cor. of sec. 5, T. 24 N., R. 6 E., with brass cap mtd.

1 S. 55° 00' W. 80 ft. 1927

From which

A white oak, 6 ins. diam., bears S. 88° 30' E., 45 lbs. dist., mtd. 1 S 5 B E.

A white oak, 6 ins. diam., bears S. 9° W., 61 lbs. dist., mtd. 1 S 5 B E.

Proportional distance.

Set an iron post, 3 ft. long, 1 in. diam., 27 ins. in the ground, for reestablished 1 sec. cor. of sec. 32, T. 25 N., R. 6 E., with brass cap mtd.

1 S 32

1927

1927

1927

1927

1927

1927

1927

Dependent Resurvey of North Boundary, T. 24 N., R. 6 E.

Chains

From which

A white oak 8 ins. diam., bears N. 65° E., 77 lbs. dist., mtd. 1 S 32 B E.

A forked white oak, 8 ins. diam., bears N. 30° W., 54 lbs. dist., mtd. 1 S 32 B E.

Enter very scattering timber.

60.00 The true point for the closing corner of secs. 5 and 6, T. 24 N., R. 6 E., as determined from the remains of one original bearing trees.

At the true point

Set an iron post, 3 ft. long, 2 ins. diam., 27 ins. in the ground, for reestablished closing corner of secs. 5 and 6, T. 24 N., R. 6 E., with brass cap mtd.

1 S 32

1927

1927

1927

1927

1927

1927

1927

1927

1927

1927

1927

1927

1927

1927

1927

1927

1927

1927

1927

Dependent Reserve of North Boundary, T. 24 N. R. 6 E.

Chains	At the true point
19.01	Set a concrete monument, 6 x 6 x 24 ins., 18 ins. in the ground, for reestablished corner of sec. 31 and sec. 32, with brass cap marked as follows: T. 24 N. R. 6 E. sec. 31 S. 31 S. 32 1927
	The remains of the original bearing trees
	A white oak stump, rotted to ground, bears N. 8° E., 50 lbs. dist.
	A fallen and badly weathered white oak, 8 ins. diam., bears N. 42° W., 124 lbs. dist., with part of an old blaze, but no marks.
	And new bearing trees: A white oak, 4 ins. diam., bears N. 0° 15' W., 71 lbs. dist., mt. T 25 N R 6 S 31 B T. A white oak, 5 ins. diam., bears N. 85° 30' W., distance not recorded, mt. T 25 N R 6 S 31 B T.
	No bearing tree available in Sec. 32.
	Land, gently rolling, with some scattered timber, poplar, tamarac, and jack pine.
	Undergrowth, young timber, willow, and alder.
	S. 89° 28' W., on a true line, along the S. bdy. of sec. 31, T. 25 N., R. 6 E. (S. 31).
	Over gently rolling land, through scattering timber and light undergrowth.
19.01	The point for the 1/4 sec. cor. of sec. 6, T. 24 N., R. 6 E. Set an iron post, 3 ft. long, 1 in. diam., 27 ins. in the ground, for 1/4 sec. cor. of sec. 6, with brass cap mt.

Dependent Reserve of North Boundary, T. 24 N., R. 6 E.

Chains	At the true point
19.01	Set a concrete monument, 6 x 6 x 24 ins., 18 ins. in the ground, for reestablished corner of sec. 31 and sec. 32, with brass cap marked as follows: T. 24 N. R. 6 E. sec. 31 S. 31 S. 32 1927
	The remains of the original bearing trees
	A black oak, 8 ins. diam., bears S. 21° 45' W., 138 lbs. dist., mt. T 24 N R 6 E. sec. 31
	A black oak, 9 ins. diam., bears S. 61° 15' W., 131 lbs. dist., mt. T 24 N R 6 E.
19.01	The true point for the 1/4 sec. cor. of sec. 31, T. 25 N., R. 6 E., as determined from the remains of original bearing trees.
	At the true point Set a concrete monument, 6 x 6 x 24 ins., 18 ins. in the ground, for reestablished 1/4 sec. cor. of sec. 31, T. 25 N., R. 6 E., with brass tablet mt. T 25 N R 6 E.
	And new bearing trees: A Norway pine stump, 16 ins. diam., 14 ins. high, bears N. 30° W., 69 lbs. dist., with no marks. A jack pine, 6 ins. diam., bears N. 13° 15' W., 194 lbs. dist., mt. T 25 N R 6 E.
	A jack pine, 9 ins. diam., bears N. 62° 45' W., 253 lbs. dist., mt. T 25 N R 6 E.
	No bearing tree available in Sec. 32.
	Land, gently rolling, with some scattered timber, poplar, tamarac, and jack pine.
	Undergrowth, young timber, willow, and alder.
	S. 89° 15' W., on a true line, along the S. bdy. of sec. 31, T. 25 N., R. 6 E. (S. 31).
	Over gently rolling land, through scattering timber.
	Over gently rolling land, through scattering timber and light undergrowth.
19.01	The stump of an original line tree, a white oak, rotted to the ground.
19.01	The stump of an original line tree, a white oak, rotted to the ground.

Dependent Resurvey of North Boundary, Tps. 24 N., R. 6 E.

38.18 The reestablished corner of Tps. 24 and 25 N., Rgs. 5 and 6 E. Land, gently rolling. Soil, sandy, red retort, and s. has mould A Timber, black oak, white oak, poplar, and jack pine.

Table of Closure, T. 24 N., R. 6 E., Michigan.

Line	Course	Distance	Latitudes	Departures
K-38y-See. 36	N. 9°08'W., 80.18	80.18	North	South
K-38y-See. 25	N. 0°09'W., 80.04	80.04	North	West
K-38y-See. 24	N. 0°15'E., 150.16	150.16	West	West
K-38y-See. 1	S. 89°16'W., 40.07	40.07	South	West
K-38y-See. 2	S. 89°24'W., 40.25	40.25	South	West
K-38y-See. 3	S. 89°29'W., 80.07	80.07	South	West
K-38y-See. 4	S. 89°31'W., 80.00	80.00	South	West
K-38y-See. 5	S. 89°15'W., 79.89	79.89	South	West
K-38y-See. 6	S. 89°15'W., 79.89	79.89	South	West
K-38y-See. 7 and 18	S. 0°51'E., 159.62	159.62	West	West
K-38y-See. 19	S. 0°42'E., 40.93	40.93	South	West
K-38y-See. 19	S. 0°33'E., 39.96	39.96	South	West
K-38y-See. 20	S. 0°20'E., 79.90	79.90	South	West
K-38y-See. 21	S. 0°20'E., 80.01	80.01	South	West
K-38y-See. 21 and 22	N. 89°22'E., 153.42	153.42	North	West
K-38y-See. 23	N. 88°45'E., 79.74	79.74	North	West
K-38y-See. 24	N. 89°11'E., 79.79	79.79	North	West
K-38y-See. 25	N. 88°55'E., 159.08	159.08	North	West

Error in Latitude = 48.10 483.75 479.13 479.55
 Error in Departure = 35 42

Dependent Resurvey of East Boundary, T. 24 N., R. 7 E.

Dependent Resurvey of the East Boundary of T. 24 N., R. 7 E., Mich. Mer., Michigan. Surveyed by Lewis Clason, D. S., in 1838.

Beginning at the reestablished corner of Tps. 23 and 24 N., Rgs. 7 and 8 E.

North, on a random line, retracing bet. secs. 31 and 36.
 Fall 34 lbs. W. of the true point for the corner of secs. 31 and 36.
 North, on a random line, retracing bet. secs. 31 and 36. (N. 4).
 Fall 11 lbs. E. of the true point for the corner of secs. 25, 30, 31, and 36.
 North, on a random line, retracing bet. secs. 25 and 30. (N. 4).
 Fall 10.01 lbs. from point NW, flag 33, bears N. 13° 02' 30" E. All angles checked by direct measurement.
 Distance from "A" to "B" = 43.22 chs.
 S. 89° 15' 00" W. to corner of 00.08
 T. 24 N., R. 7 E. to corner of 00.08