



**DEPARTMENT OF NATURAL RESOURCES  
STATE OF MICHIGAN  
TIMBER SALE PROSPECTUS #7335**

SCHEDULED SALE DATE AND TIME: **3:00 p.m. (local time) on December 5, 2023.**

LOCATION: **ESCANABA MGMT UNIT, 6833 HWY'S 2, 41 & M-35, GLADSTONE, MI 49837.**

PROSPECTUS NOTE: The bidder is advised to inspect the sale area and review the location, estimated volumes, operating costs and contract terms of proposed sales. Please be aware that some landowners may request 60 days or more notice for access across their land.

Notice is hereby given that bids will be received by the Unit Manager, ESCANABA MANAGEMENT UNIT, for certain timber on the following described lands:

South Schuster (33-007-23) / T35N, R25W, SEC. 4 , NENE.

T36N, R25W, SEC. 33, E1/2NW,NE,E1/2SE.

Menominee County, Advertised Price \$34,638.55, 45.6 Acres, Hardwood, White Pine.

SALE NOTE: A recreation site such as a trail, pathway, or campground is within the sale area or the vicinity. Certain restrictions/specifications may be applicable including time restrictions.

Stinging Muskrat (33-028-23) / T34N, R28W, SEC. 5 , NWNW.

T34N, R28W, SEC. 6 , N1/2NE.

T35N, R28W, SEC. 31, SENW,SWNE,N1/2SW,SE.

T35N, R28W, SEC. 32, SENW,NWNE,N1/2SW,SWSW.

Menominee County, Advertised Price \$36,734.70, 203.2 Acres, Spruce/Fir/Tamarack, Hardwood.

SALE NOTE: Payment Units 1 - 12, can be accessed through state land, but Payment Unit 13 will need to be accessed through private property. The landowner has shown a willingness to allow access. Some gravel will need to be hauled and spread by the Purchaser, a gravel pit is near Payment Unit 5.

Barren Aspen (33-029-23) / T35N, R28W, SEC. 30, S1/2NW,N1/2SW,SWSW,NWSE.

T35N, R29W, SEC. 25, SENE,NESE.

T35N, R29W, SEC. 36, W1/2NW,NENE,NWSW.

Menominee County, Advertised Price \$50,629.90, 128.1 Acres, Aspen, Hardwood.

SALE NOTE: All Payment Units can be accessed through state land. All Payment Units must be harvested between December 1st and March 31st to minimize soil disturbance.

## BID INSTRUCTIONS (VER. 10/10/2022):

### 1. Scheduled Bid Location, Date, and Time (2/11)

Bids must be received by the Unit Manager, ESCANABA OFFICE, 6833 Hwy's 2, 41 & M-35, Gladstone, MI 49837, no later than 3:00 p.m. (local time) on December 5, 2023. For further information concerning this sale, contact Eric Thompson at 906-789-8231.

### 2. Bidder's Qualifications (10/22)

If all or part of a timber sale was prepared by a private contractor, the contractor and that contractor's company are not permitted to bid on the timber sale. A person must be 18 years of age or older to purchase timber. Permanent employees of the Department of Natural Resources or members of their immediate household may not bid. Former employees, in the permanent or seasonal class, may not bid until 3 months after the last day of active duty. Bids will not be accepted from individuals or companies appearing on the DNR/FRD No-Bid List. This list contains the names of purchasers who previously failed to execute a contract within 21-days or who have a history of poor performance.

### 3. Preparation of Sealed Bids (5/16)

Bid Forms may be completed online thru Michigan DNR Timber Sale Online Bidding (OLB) at [www.michigan.gov/timberbidding](http://www.michigan.gov/timberbidding) or by completing the hardcopy Bid Form found in the Timber Sale Prospectus. Hardcopy Bid Forms shall be manually signed in ink. Registration in OLB is considered your 'signature' for all bids submitted thru that system. Bid prices must be entered for each species and product in the Bid Price column for all material subject to bidding and all fill-in blanks must be completed. If erasures or other changes appear on the hardcopy Bid Form, each erasure or change must be initialed by the person signing the bid.

### 4. Submission of Sealed Bids (5/16)

Bid forms may be obtained from the Unit Manager or thru OLB. Bids may be submitted hardcopy or thru OLB. All hardcopy bids must be submitted on the bid form and in an envelope clearly identified as described in this section. NOTE: Only one bid form per bid envelope. Sealed bids must be submitted to the Unit office designated in the prospectus and must be submitted at or prior to the time established in the prospectus. The envelope should show on the outside (a) the sale name or number and (b) the date and time of bid opening, as shown in the prospectus. Bids received after the time specified in the sale prospectus are late bids and will be rejected.

It is possible for a bidder to submit multiple bids on a single sale. For example, a bid may be submitted hardcopy and a bid may be submitted thru OLB. Or, two bidders from the same company could both submit bids on the same sale. If this were to happen, the State would accept all bids received and award the contract accordingly. All bidding and contractual requirements would apply to all bids received.

### 5. Public Opening of Sealed Bids (7/16)

If conditions permit, the sealed bids will be publicly opened and posted at the time and place set in the prospectus.

If a bidder, present at a bid opening, has submitted bids on more than one sale, that bidder may withdraw their unopened bid envelopes or announce the withdrawal of their online bid after being declared the successful bidder on one sale.

### 6. Award of Contract (1/11)

Award of the contract will be made to the Bidder whose bid, conforming to the prospectus, is most advantageous to the State of Michigan on the basis of total value at rates bid for the estimated quantities. The State reserves the right to reject any bid or waive any minor irregularity in bids received. A written award mailed (or otherwise furnished) to the successful Bidder shall be deemed to result in a binding contract without further action by either party.

### 7. Down Payment (1/11)

The Bidder to whom award is made must make a down payment within 21 days of the sale award. The amount of the down payment will be calculated as shown in the Bond and Payment Schedule of this prospectus. Only cash may be used to meet this requirement.

### 8. Performance Security (1/11)

As guarantee of faithful performance, a cash bond, certificate of deposit, surety bond or irrevocable letter of credit (LOC) is required within 21 days of the sale award. The amount of the performance security is shown in the Bond and

Payment Schedule of this prospectus. If an LOC or surety is used, the coverage must extend for at least 6 months beyond the contract expiration.

#### 9. Worker's Compensation (10/22)

Purchaser shall obtain worker's compensation insurance to cover claims under Michigan's Worker's Disability Compensation Act of 1969 or similar employee benefit act of any other state applicable to an employee. Verification of Worker's Disability Compensation Act Compliance must be completed and submitted within 21 days of contract award and prior to the issuance of the timber sale contract. In addition, if applicable, Notice of Exclusion or Certificate of Insurance must also be submitted.

#### 10. Timber Sale Contract (10/22)

Additional conditions and requirements common to all timber sales are listed on the timber sale contract (R4031) and are available on line at [www.michigan.gov/timber](http://www.michigan.gov/timber). Contact the Unit Manager for additional information or a sample contract. Within 21 days of the date of the award letter, the bidder must sign the contract and provide the required down payment, performance security, and verification of worker's disability compensation. The down payment and performance security shall be in accordance with the provisions of the timber sale contract, in the sums stated in this prospectus. If these actions are not taken, then the Bidder, the Bidder's corporation, and the corporation's principals may not be permitted to bid on State timber sales for a period of 3 months after the first offense, 6 months after the second offense, and 1 year after the third offense. An offense will only be counted against the Bidder for 5 years. In addition, the Bidder certifies that if awarded this contract, the Bidder will complete the timber sale contract in accordance with its terms and any modifications thereof including requirements to purchase, cut, and remove the included timber by the expiration date.

Payment Unit values in the State Forest Timber Sale Contract are calculated based on the advertised value of the Payment Unit as a percentage of the total advertised value of the contract. The advertised value of each Payment Unit is given in the Description of Timber by Payment Unit table on the Timber Sale Information page. For example, if the value of Payment Unit 1 is advertised as \$1,500 and the total Timber Sale value is advertised as \$10,000, the contract price for Payment Unit 1 will be 15% of the total bid price ( $\$1,500/\$10,000 * 100$ ).

#### 11. Disclaimer of Estimates and Bidder's Warranty of Inspection (10/22)

Before submitting this bid, the Bidder is advised and cautioned to inspect the sale area, review the requirements of the sale contract, and take other steps as may be reasonably necessary to ascertain the location, estimated volumes, construction estimates, and operating costs of the proposed sale. Failure to do so will not relieve the Bidder from responsibility for completing the contract.

The Bidder warrants that this bid is submitted solely on the basis of the Bidder's examination and inspection of the quality and quantity of the timber offered for sale and the Bidder's opinion of the value thereof and the costs of recovery. No reliance should be placed on the State of Michigan's estimates of timber quality, quantity or costs of recovery. Bidder further acknowledges that the State of Michigan: (i) expressly disclaims any warranty of fitness of timber for any purpose; (ii) offers this timber as is without any warranty of quality (merchantability) or quantity and (iii) expressly disclaims any warranty as to the quantity or quality of timber sold.

#### 12. Certification and Chain-of-Custody (10/22)

Unless otherwise indicated in the contract under section 7 – Other Conditions of the Sale Specific Conditions & Requirements, the area encompassed by this timber sale is certified to the standards of the Forest Stewardship Council (FSC) - Certificate #SCS-FM/COC-00090N and the Sustainable Forestry Initiative (SFI) - Certificate # NSF-SFIS-5Y031-SF5. Forest products from this sale may be delivered to the mill as "FSC 100% and / or SFI certified" as long as the contractor hauling the forest products is chain-of-custody (COC) certified or covered under a COC certificate from the destination mill. The purchaser is responsible for maintaining COC after leaving the sale area.

#### 13. Good Neighbor Authority (GNA) Requirements (10/22)

If the name of this timber sales contains the acronym GNA, it is authorized by the Good Neighbor Authority (GNA) and covered by various agreements between the U.S. Forest Service and the State. The timber sale occurs on federal land and the following conditions apply:

GNA contracts on US Forest Service land will not be awarded to purchasers on the Federal list of excluded parties. The System for Award Management (SAM) will be checked for active excluded parties prior to award of contract. In

addition, the Bidder to whom award is made must complete an Assurance Regarding Felony Conviction or Tax Delinquent Status for Corporate Applicants (AD-3031).

14. Good Neighbor Authority (GNA) Requirements, con't (10/22)

Bidder certifies, by signing this bid form, that to the best of Bidder's knowledge that the following representations are accurate and complete.

- a. That the Bidder and its principals are not presently debarred, suspended, proposed for debarment, declared ineligible, or voluntary excluded from timber sales (covered transactions) by any Federal department or agency.
- b. That the Bidder and its principals have not within a 3-year period preceding this bid been convicted of or had a civil judgment rendered against them for commission of fraud or a criminal offense in connection with obtaining , attempting to obtain, or performing a public (Federal, State, or local) transaction or contract under a public transaction; violation of Federal or State antitrust statutes or commission of embezzlement, theft, forgery, bribery, falsification or destruction of records, making false statements, or receiving stolen property.
- c. That the Bidder and its principals are not presently indicted for or otherwise criminally or civilly charged by a governmental entity (Federal, State, or local) with commission of any of the offenses enumerated in paragraph b of this certification.
- d. That the Bidder and its principals have not within a 3-year period preceding this bid had one or more public transactions (Federal, State, or local) terminated for breach or default of a timber or forest product contract.

Bidders that cannot certify this requirement, in whole or in part, shall submit an explanation with their bid.

Scott Bowen  
Director

## TIMBER SALE INFORMATION

### South Schuster (33-007-23)

T35N, R25W, SEC. 4; T36N, R25W, SEC. 33.  
Menominee County (Advertised Price \$34,638.55)

SALE NOTE: A recreation site such as a trail, pathway, or campground is within the sale area or the vicinity. Certain restrictions/specifications may be applicable including time restrictions.

A timber sale contract for this lump sum, sealed bid timber sale will be awarded to the responsible bidder offering the highest sealed bid price. All units of volume listed below were estimated using the Inventory Manager computer program and the new Michigan taper model. Bids must be at or above the following advertised price for each product and species:

<u>PRODUCTS &amp; SPECIES</u>	<u>ESTIMATED UNITS*</u>	<u>ADVERTISED PRICE</u>
<b>Sawtimber</b>		
Black Cherry	2.5 MBF	\$ 74.00 / MBF
Paper Birch	5.8 MBF	\$ 102.00 / MBF
Red Maple	60.6 MBF	\$ 145.00 / MBF
Sugar Maple	5.3 MBF	\$ 304.00 / MBF
Yellow Birch	2.3 MBF	\$ 90.00 / MBF
<b>Pulpwood</b>		
Balsam Fir	82 Cords	\$ 12.45 / Cord
Green Ash	16 Cords	\$ 7.50 / Cord
Mixed Aspen	49 Cords	\$ 27.80 / Cord
Mixed Hardwood	288 Cords	\$ 19.75 / Cord
Red Pine	116 Cords	\$ 48.10 / Cord
White Pine	292 Cords	\$ 30.55 / Cord
White Spruce	43 Cords	\$ 13.15 / Cord

\* The total volume is statistically estimated within plus (+) or minus (-) 20.50 percent. There are an estimated 1,088 cords on this timber sale, plus or minus 223 cords at the 95% confidence level. The estimated units are final and not subject to adjustment. Prospective bidders are urged to examine this timber and to make their own estimates of quantity and quality.

### **BOND AND PAYMENT SCHEDULE:**

1. A bond in the amount of \$1,732.00 to insure faithful performance of the conditions of the contract will be deposited by the successful bidder within 21 days of the sale award.
2. Cutting in any sale or unit without the required advance payment would be considered a trespass.
3. Total payment must be paid in advance or according to the following schedule :
  - (a) Ten percent (10%) of the sale value must be paid within 21 days of the sale award.
  - (b) The 10% down payment will be credited towards the first unit cut.
  - (c) Payment for each of the following units must be made before cutting begins in that unit:
 

PAYMENT UNIT NUMBER	PERCENT OF TOTAL SALE VALUE
01	13.7%
02	31.5%
03	34.7%
04	20.1%
4. If no cutting takes place, the 10% down payment will not be refunded.
5. Operations on the contract issued will terminate on 09/30/2026.

### **SALE STATISTICS**

Volumes were calculated in cubic feet using the Michigan taper model. Cubic foot volume includes all wood inside bark for the product indicated. For display purposes, cubic feet were converted to cords and MBF using a simple conversion factor, e.g. 79 cubic feet per cord and 185 cubic feet per MBF. The cubic foot volumes are precise; the cords and MBF volumes are not. Cubic foot volume cannot be directly converted to cords or boards with precision.

## SALE VOLUMES

The total estimated sale volume may not equal the sum of the species/products due to the nature of statistical calculations associated with double sampling methodology.

VOLUME			STATISTICAL RANGE IN CORDS	
TOTAL CUBIC FEET	TOTAL CORDS	PERCENT ERROR	MINIMUM	MAXIMUM
85,978	1,088	20.50%	865	1,312

## VDU VOLUMES

A VDU is a Volume Determination Unit. Volumes and their associated statistics are calculated at the VDU level and summarized to the sale level. There is often a one to one relationship between a VDU and a Payment Unit, but not always, depending on the cruise design. Refer to the VDU TO PAYMENT UNIT table.

	VOLUME			RANGE IN CORDS	
VDU	TOTAL CUBIC FEET	TOTAL CORDS	PERCENT ERROR	MINIMUM	MAXIMUM
36	13,505	171	56.28%	75	267
41	54,275	687	24.68%	517	857
64	18,199	230	35.88%	148	313
<b>TOTAL:</b>	<b>85,978</b>	<b>1,088</b>		<b>740</b>	<b>1,437</b>

## VDU TO PAYMENT UNIT

When a VDU is associated with more than one Payment Unit (PU), the VDU volumes are assigned to the PU based on acres of the VDU within the PU.

VDU	VDU ACRES	PU	PU ACRES
36	10.1	1	10.1
41	21.5	2	10.2
		3	11.3
64	14.0	4	14.0
<b>TOTAL:</b>	<b>45.6</b>		<b>45.6</b>

**DESCRIPTION OF TIMBER BY PAYMENT UNIT (PU)**

PU	MARKET GROUP	PRODUCT	QUANTITY	UNIT	ACRES	ADVERTISE PRICE
1	Balsam Fir	Pulpwood	50	Cords	10.1	\$4,749.30
	Red Pine		56	Cords		
	White Pine		34	Cords		
	White Spruce		30	Cords		
2	Black Cherry	Sawtimber	1.2	MBF	10.2	\$10,894.30
	Paper Birch		2.8	MBF		
	Red Maple		26.9	MBF		
	Sugar Maple		2.5	MBF		
	Yellow Birch		1.1	MBF		
	Balsam Fir	Pulpwood	10	Cords		
	Green Ash		8	Cords		
	Mixed Aspen		15	Cords		
	<i>Quaking Aspen</i>		15	<i>Cords</i>		
	Mixed Hardwood		118	Cords		
	<i>Beech</i>		2	<i>Cords</i>		
	<i>Black Cherry</i>		1	<i>Cords</i>		
	<i>Paper Birch</i>		9	<i>Cords</i>		
	<i>Red Maple</i>		82	<i>Cords</i>		
	<i>Sugar Maple</i>		2	<i>Cords</i>		
	<i>Yellow Birch</i>		22	<i>Cords</i>		
	White Pine		90	Cords		
	White Spruce		6	Cords		
	3		Black Cherry	Sawtimber		
Paper Birch		3.0	MBF			
Red Maple		29.8	MBF			
Sugar Maple		2.8	MBF			
Yellow Birch		1.2	MBF			
Balsam Fir		Pulpwood	12	Cords		
Green Ash			8	Cords		
Mixed Aspen			16	Cords		
<i>Quaking Aspen</i>			16	<i>Cords</i>		
Mixed Hardwood			131	Cords		
<i>Beech</i>			2	<i>Cords</i>		
<i>Black Cherry</i>			1	<i>Cords</i>		
<i>Paper Birch</i>			10	<i>Cords</i>		
<i>Red Maple</i>			91	<i>Cords</i>		
<i>Sugar Maple</i>			3	<i>Cords</i>		
<i>Yellow Birch</i>			24	<i>Cords</i>		
White Pine			99	Cords		
White Spruce			7	Cords		
4			Red Maple	Sawtimber	3.9	MBF
	Balsam Fir	Pulpwood	10	Cords		
	Mixed Aspen		18	Cords		
	<i>B. T. Aspen</i>		18	<i>Cords</i>		
	Mixed Hardwood		39	Cords		
	<i>Paper Birch</i>		12	<i>Cords</i>		
	<i>Red Maple</i>		27	<i>Cords</i>		
	Red Pine		60	Cords		
	White Pine		69	Cords		
TOTAL:			76.5	MBF		
TOTAL:			886	Cords		

## Sale Specific Conditions & Requirements

**Sale Name: South Schuster**

**Sale Number: 33-007-23 Seq#: 1**

### 1 - Sale Area

#### 1.2 - Boundaries

##### 1.2.1 - Painted boundaries (9/19)

The sale boundary and Payment Unit boundaries are marked and identified by blue and red paint. Exterior sale boundary lines against private property are marked with blue paint. Exterior sale boundary lines against state are marked with red paint. Retention patches are marked with red paint; no harvesting activities may occur within these areas. The painted boundary line trees are not Included Timber and are to be protected unless marked with orange paint.

### 2 - Timber Specifications

#### 2.1 - Included Timber

##### 2.1.2 - Clearcut unit(s) w/o unmerchantable trees (8/11)

Within Payment Unit(s) 2 and 3, cut all trees which meet minimum piece specifications in 2.2 Utilization except do not cut any hemlock and trees marked with green paint above and below stump height.

##### 2.1.3 - Cut tree marked unit(s) (12/08)

Within Payment Unit(s) 1, all trees are designated for cutting when marked with orange paint above and below stump height, regardless of merchantability. Also, all merchantable spruce and balsam fir are designated for cutting regardless of merchantability. Follow cutting specification 2.1.9 harvest exception for all other merchantable species.

##### 2.1.7 - Leave tree marked unit(s) (6/14)

Within Payment Unit(s) 4, all trees, which meet minimum piece specifications in 2.2 Utilization, are designated for cutting except do not cut any cedar, hemlock, and trees marked with green paint above and below stump height.

##### 2.1.9 - Harvest exception (12/08)

Do not cut within payment unit 1 any trees not designated for harvest in cutting specification 2.1.3 cut tree marked unit(s) other than those that are necessary to remove in order to operate within the sale area. Every effort must be made to preserve the existing trees not designated for harvest and to leave an intact stand upon sale completion. All cut trees not designated for harvest within payment unit 1 shall be piled separately by products and scaled in the woods unless other scaling arrangements are agreed to by the Unit Manager or his/her representative. Stumpage price for these trees shall be the contract bid price of each species/products within the sale contract.

##### 2.1.11 - Description of timber note (2/04)

Note that aspen, conifer species, and ash are calculated as pulpwood volumes regardless of the species diameter at breast height (dbh) size class.

### 3 - Payments

#### 3.3 - Pre-measured Sales

##### 3.3.4 - Dividing payment units (7/14)

Payment Unit(s) with a contract bid value of \$18,000 dollars or greater may be divided at the request of the Purchaser and upon approval of the Unit Manager. Dividing Payment Units is a contract modification which requires a Timber Sale Contract Amendment. There will be only one division per Payment Unit.

### 4 - Transportation

#### 4.1 - Construction

##### 4.1.6 - Road construction (1/09)

Construction of new roads or improvements of existing roads shall be done in such a way as to minimize the environmental and visual impacts. Merchantable trees shall be cut and utilized unless otherwise directed. Non-merchantable trees shall be severed and laid flat on the ground. Slash shall be scattered, and not left in windrows and kept a minimum of 10 feet back from the road edge. Stumps shall be set upright, not left on edge, and be moved at least 10 feet away from the road edge.



Disturbed soil shall be feathered into the woods and not left in berms or windrows.

#### 4.1.7 - Road closure (10/11)

All new roads built into the sale must be blocked to vehicle traffic upon completion of the sale. Overgrown roads that are reopened shall be considered new roads. In general, this will require constructing a four (4') foot high berm of stumps and logs covered with earth. These roads must be rendered impassable to cars and trucks. Contact the sale administrator for specific details of design and placement.

### 4.2 - Maintenance

#### 4.2.2 - Fill material (4/07)

To maintain roads, fill material may be needed in areas where "holes" exist or may be expected to develop. This fill material should be placed before trucking begins. Contact the sale administrator regarding the availability of onsite sand or gravel from adjacent State-owned lands.

#### 4.2.4 - Grading (10/16)

For completion of the sale, state forest roads must be graded. In general, this will require a road grader or bull dozer to shape up the roads after forest products have been hauled off site. This includes cleaning of drainage areas, grading, crowning and filling with gravel, if necessary. The grading equipment to be used must be approved by the Unit Manager or his/her representative.

## 5 - Operations

### 5.2 - Conduct of Operations

#### 5.2.2 - Hazard Trees/Snags

##### 5.2.2.1 - Den trees (10/16)

Obvious hollow and/or den trees shall be protected and left standing unless they are a safety hazard.

#### 5.2.3 - Operating Restrictions

##### 5.2.3.3 - Bark slippage restriction (3/09)

Within Payment Unit(s) 1, unless changed by written agreement, cutting and skidding are not permitted during the period of April 15 to July 15. This restriction is because of bark slippage.

#### 5.2.39 - ORV trail/route protection (4/18)

The Forest Islands is an ORV trail or route and is shown and symbolized on the Timber Sale Map. Do not cut trees or damage posts with yellow ORV markers. All stumps within 5 feet of the trail must be cut flush with the ground. Maintain a 20 foot wide slash, debris, and rut free zone daily using the ORV trail or route as the centerline.

### 5.4 - Soil Protection

#### 5.4.1 - Rutting restriction, general (7/16)

Operations are to cease immediately if equipment and weather conditions result in rutting of roads and/or skid trails which is 12 inches or greater in depth and 50 feet in length. The Unit Manager or his/her representative may restrict hauling and/or skidding if ruts exceed the specified depth. With the Unit Manager or his/her representative's approval, the Purchaser may return to the area when the risk of rutting has decreased.

### 5.7 - Protection of Historical Sites

#### 5.7.1 - Historical sites (7/12)

The Purchaser shall not cut live or dead trees or operate equipment within historical sites. Historical sites are marked with ribbon line. The Purchaser shall protect historical sites from damage by the Purchaser's operations. If Purchaser's operations have cut or damaged historical sites through carelessness, the Purchaser shall pay \$100 dollars as fixed, agreed and liquidated damages for each acre or part thereof cut or damaged.

## 6 - Safety and Fire Prevention

### 6.2 - Signing

#### 6.2.1 - Road posting (10/20)

The Purchaser is responsible for posting and maintaining caution signs on the Schuster Road prior to beginning operations. The road must be posted at appropriate distances from the sale area to warn of logging activity and truck traffic. Signs must be removed when harvest operations are suspended or completed. The Purchaser will provide these signs.

#### 6.2.3 - Recreational trail posting (10/20)

The Purchaser is responsible for posting and maintaining caution signs on the Forest Islands ORV trail prior to beginning operations. The trail must be posted at appropriate distances from the sale area to warn of logging activity and truck traffic at both ends of the trail. Signs must be removed when harvest operations are suspended or completed. The Purchaser will provide these signs.



### TIMBER SALE MAP

This information provided by authority of Part 525, 1994 PA 451, as amended.

Sale Number  
**33-007-23**

Date  
**09/18/2023**

Forest Management Unit	County	Mapped By: Racine	Scale	Page	Of
Escanaba Mgt Unit	Menominee	Cruised By: Reger, Racine	1:14,551	1	1

Township	Range	Section(s) and
35N / 36N	25W	Subdivision(s) Sec. 33 E1/2NW,NE,E1/2SE; Sec. 4 NENE;

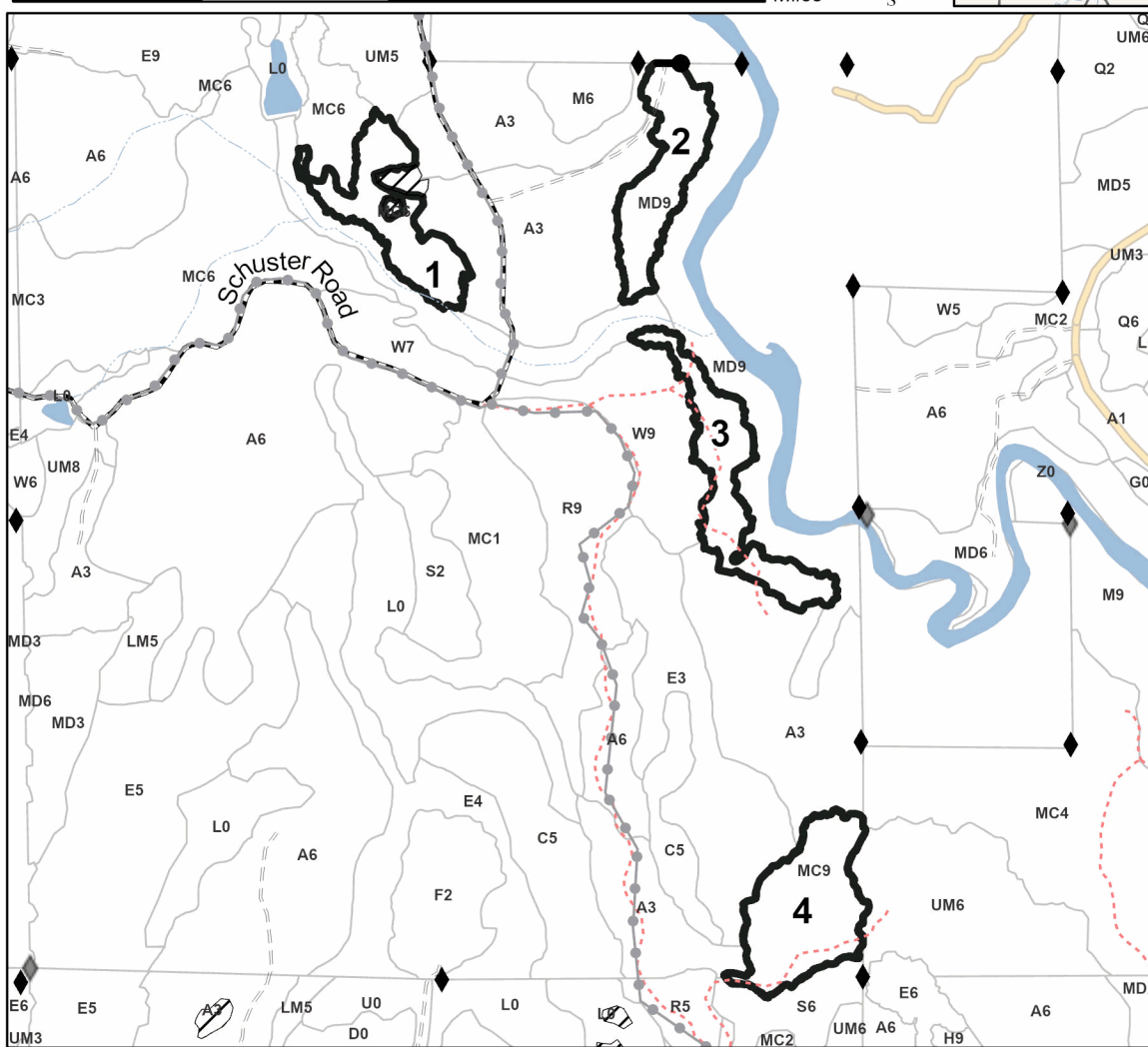
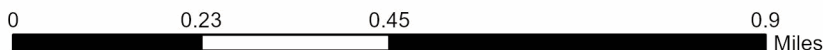
Cover Type			
A = Aspen	J = Jack Pine	O = Oak	U = Upland Brush
B = Paper Birch	K = Rock	P = Lowland Poplar	UM = Upland Mix Forest
C = Cedar	L = Lowland Brush	Q = Mixed Swamp Conifer	V = Bog or Marsh
D = Treed Bog	LM = Lowland Mix Forest	R = Red Pine	W = White Pine
E = Swamp Hardwoods	M = Maple, Beech, Birch	S = Black Spruce	X = Non Stocked
F = Spruce/Fir	MC = Mixed Conifer	T = Tamarack	Y = Sand
G = Grass	MD = Mixed Deciduous	Z = Water	
H = Hemlock	N = Marsh		

Density	
0 = Non Stocked	5 = Pole Timber Medium
1 = Seedling Sapling Poor	6 = Pole Timber Well
2 = Seedling Sapling Medium	7 = Saw Timber Poor
3 = Seedling Sapling Well	8 = Saw Timber Medium
4 = Pole Timber Poor	9 = Saw Timber Well

PU #	Acres
1	10.1
2	10.2
3	11.2
4	14

**South Schuster**  
**45.6 Acres**

### Locator Map (1:200,000)



### Legend

- Payment Unit
- Against State (Red)
- Private Line (Blue)
- Stand
- Retention Areas
- Recreational Trail
- Timber Sale Map Generic Lines
- Primary Forest Road
- Secondary Forest Road
- Forest Access Route
- Administrative Access Only
- Non-DNR Road
- Field Grade Corner
- Survey Grade Corner

Use QR Code to open Map in App





## TIMBER SALE INFORMATION

### Stinging Muskrat (33-028-23)

T34N, R28W, SEC. 5; T34N, R28W, SEC. 6; T35N, R28W, SEC. 31; T35N, R28W, SEC. 32.  
Menominee County (Advertised Price \$36,734.70)

SALE NOTE: Payment Units 1 - 12, can be accessed through state land, but Payment Unit 13 will need to be accessed through private property. The landowner has shown a willingness to allow access. Some gravel will need to be hauled and spread by the Purchaser, a gravel pit is near Payment Unit 5.

A timber sale contract for this lump sum, sealed bid timber sale will be awarded to the responsible bidder offering the highest sealed bid price. All units of volume listed below were estimated using the Inventory Manager computer program and the new Michigan taper model. Bids must be at or above the following advertised price for each product and species:

<u>PRODUCTS &amp; SPECIES</u>	<u>ESTIMATED UNITS*</u>	<u>ADVERTISED PRICE</u>
<b>Sawtimber</b>		
Basswood	23.6 MBF	\$ 42.00 / MBF
Northern Pin Oak	6.9 MBF	\$ 105.00 / MBF
Paper Birch	4.2 MBF	\$ 81.00 / MBF
Red Maple	10.0 MBF	\$ 116.00 / MBF
Red Oak	3.2 MBF	\$ 86.00 / MBF
Sugar Maple	13.5 MBF	\$ 244.00 / MBF
White Ash	11.6 MBF	\$ 80.00 / MBF
<b>Pulpwood</b>		
Balsam Fir	211 Cords	\$ 9.95 / Cord
Jack Pine	18 Cords	\$ 35.40 / Cord
Mixed Aspen	203 Cords	\$ 22.20 / Cord
Mixed Hardwood	506 Cords	\$ 15.80 / Cord
Mixed Oak	60 Cords	\$ 17.60 / Cord
Mixed Spruce	317 Cords	\$ 10.50 / Cord
N. White Cedar	225 Cords	\$ 8.70 / Cord
Red Pine	77 Cords	\$ 38.50 / Cord
Tamarack	210 Cords	\$ 14.45 / Cord
White Pine	59 Cords	\$ 24.45 / Cord

\* The total volume is statistically estimated within plus (+) or minus (-) 9.51 percent. There are an estimated 2,098 cords on this timber sale, plus or minus 199 cords at the 95% confidence level. The estimated units are final and not subject to adjustment. Prospective bidders are urged to examine this timber and to make their own estimates of quantity and quality.

### **BOND AND PAYMENT SCHEDULE:**

1. A bond in the amount of \$1,837.00 to insure faithful performance of the conditions of the contract will be deposited by the successful bidder within 21 days of the sale award.
2. Cutting in any sale or unit without the required advance payment would be considered a trespass.
3. Total payment must be paid in advance or according to the following schedule :
  - (a) Ten percent (10%) of the sale value must be paid within 21 days of the sale award.
  - (b) The 10% down payment will be credited towards the first unit cut.
  - (c) Payment for each of the following units must be made before cutting begins in that unit:

PAYMENT UNIT NUMBER	PERCENT OF TOTAL SALE VALUE
01	11.5%
02	6.3%
03	6.4%
04	4.2%
05	2.5%
06	23.3%
07	2.3%
08	10.5%
09	13.7%
10	12.1%
11	1.9%
12	3.3%
13	2.0%

4. If no cutting takes place, the 10% down payment will not be refunded.
5. Operations on the contract issued will terminate on 06/30/2027.

### **SALE STATISTICS**

Volumes were calculated in cubic feet using the Michigan taper model. Cubic foot volume includes all wood inside bark for the product indicated. For display purposes, cubic feet were converted to cords and MBF using a simple conversion factor, e.g. 79 cubic feet per cord and 185 cubic feet per MBF. The cubic foot volumes are precise; the cords and MBF volumes are not. Cubic foot volume cannot be directly converted to cords or boards with precision.

### **SALE VOLUMES**

The total estimated sale volume may not equal the sum of the species/products due to the nature of statistical calculations associated with double sampling methodology.

VOLUME			STATISTICAL RANGE IN CORDS	
TOTAL CUBIC FEET	TOTAL CORDS	PERCENT ERROR	MINIMUM	MAXIMUM
165,716	2,098	9.51%	1,898	2,297

### **VDU VOLUMES**

A VDU is a Volume Determination Unit. Volumes and their associated statistics are calculated at the VDU level and summarized to the sale level. There is often a one to one relationship between a VDU and a Payment Unit, but not always, depending on the cruise design. Refer to the VDU TO PAYMENT UNIT table.

	VOLUME			RANGE IN CORDS	
VDU	TOTAL CUBIC FEET	TOTAL CORDS	PERCENT ERROR	MINIMUM	MAXIMUM
4	31,265	396	19.39%	319	472
5	11,735	149	30.80%	103	194
16	7,802	99	51.88%	48	150
17	4,631	59	42.41%	34	83
18	35,644	451	21.77%	353	549
19	2,659	34	85.93%	5	63
22	32,364	410	21.14%	323	496
25	24,906	315	19.65%	253	377
26	2,704	34	43.31%	19	49
27	7,323	93	37.61%	58	128
30	4,685	59	67.23%	19	99
<b>TOTAL:</b>	<b>165,716</b>	<b>2,098</b>		<b>1,534</b>	<b>2,661</b>

**VDU TO PAYMENT UNIT**

When a VDU is associated with more than one Payment Unit (PU), the VDU volumes are assigned to the PU based on acres of the VDU within the PU.

VDU	VDU ACRES	PU	PU ACRES
4	40.3	2	20.1
		3	20.2
5	22.1	1	22.1
16	8.0	4	8.0
17	6.2	5	6.2
18	27.5	6	27.5
19	3.4	7	3.4
22	47.1	8	20.4
		9	26.7
25	28.0	10	28.0
26	1.5	11	1.5
27	6.3	12	6.3
30	12.8	13	12.8
<b>TOTAL:</b>	<b>203.2</b>		<b>203.2</b>

**DESCRIPTION OF TIMBER BY PAYMENT UNIT (PU)**

PU	MARKET GROUP	PRODUCT	QUANTITY	UNIT	ACRES	ADVERTISE PRICE
1	Balsam Fir	Pulpwood	2	Cords	22.1	\$4,215.20
	Jack Pine		15	Cords		
	Mixed Aspen		25	Cords		
	<i>B. T. Aspen</i>		25	Cords		
	Mixed Hardwood		7	Cords		
	<i>Black Cherry</i>		1	Cords		
	<i>Red Maple</i>		6	Cords		
	Mixed Oak		30	Cords		
	<i>Northern Pin Oak</i>		30	Cords		
	Mixed Spruce		5	Cords		
	<i>Black Spruce</i>		5	Cords		
	Red Pine		59	Cords		
	White Pine		6	Cords		
2	Paper Birch	Sawtimber	0.3	MBF	20.1	\$2,327.15
	Balsam Fir	Pulpwood	5	Cords		
	Mixed Hardwood		7	Cords		
	<i>Paper Birch</i>		7	Cords		
	Mixed Spruce		60	Cords		
	<i>Black Spruce</i>		60	Cords		
	N. White Cedar		65	Cords		
	Tamarack		52	Cords		
	White Pine		8	Cords		
3	Paper Birch		Sawtimber	0.3	MBF	20.2
	Balsam Fir	Pulpwood	5	Cords		
	Mixed Hardwood		8	Cords		
	<i>Paper Birch</i>		7	Cords		
	<i>Red Maple</i>		1	Cords		
	Mixed Spruce		61	Cords		
	<i>Black Spruce</i>		60	Cords		
	<i>White Spruce</i>		1	Cords		
	N. White Cedar		65	Cords		
	Tamarack		52	Cords		
White Pine	8		Cords			
4	Northern Pin Oak	Sawtimber	1.9	MBF	8.0	\$1,544.65
	Balsam Fir	Pulpwood	42	Cords		
	Mixed Aspen		2	Cords		
	<i>Quaking Aspen</i>		2	Cords		
	Mixed Hardwood		18	Cords		
	<i>Balsam Poplar</i>		8	Cords		
	<i>Black Ash</i>		1	Cords		
	<i>Red Maple</i>		9	Cords		
	Mixed Oak		5	Cords		
	<i>Northern Pin Oak</i>		5	Cords		
	Mixed Spruce		15	Cords		
	<i>White Spruce</i>		15	Cords		
	N. White Cedar		2	Cords		
	Red Pine		3	Cords		
White Pine	9		Cords			
5	Northern Pin Oak	Sawtimber	0.6	MBF	6.2	\$903.00
	Mixed Hardwood	Pulpwood	39	Cords		
	<i>American Elm</i>		3	Cords		
	<i>Balsam Poplar</i>		7	Cords		
	<i>Black Ash</i>		22	Cords		
	<i>Red Maple</i>		7	Cords		
	Mixed Oak		6	Cords		
	<i>Northern Pin Oak</i>		6	Cords		



**DESCRIPTION OF TIMBER BY PAYMENT UNIT (PU), CON'T**

PU	MARKET GROUP	PRODUCT	QUANTITY	UNIT	ACRES	ADVERTISE PRICE
5 con't	Mixed Spruce	Pulpwood	3	Cords		
	<i>Black Spruce</i>		3	Cords		
	Tamarack		6	Cords		
6	Northern Pin Oak	Sawtimber	3.7	MBF	27.5	\$8,567.70
	Red Maple		2.3	MBF		
	Red Oak		0.9	MBF		
	Sugar Maple	2.7	MBF			
	Balsam Fir	Pulpwood	117	Cords		
	Mixed Aspen		173	Cords		
	<i>B. T. Aspen</i>		10	Cords		
	<i>Quaking Aspen</i>		163	Cords		
	Mixed Hardwood		68	Cords		
	<i>American Elm</i>		3	Cords		
	<i>Balsam Poplar</i>		11	Cords		
	<i>Basswood</i>		5	Cords		
	<i>Black Cherry</i>		5	Cords		
	<i>Ironwood</i>		1	Cords		
	<i>Paper Birch</i>		3	Cords		
	<i>Red Maple</i>		13	Cords		
	<i>Sugar Maple</i>		24	Cords		
	<i>White Ash</i>		3	Cords		
	Mixed Oak		9	Cords		
	<i>Northern Pin Oak</i>		8	Cords		
	<i>Red Oak</i>		1	Cords		
	Mixed Spruce	23	Cords			
	<i>White Spruce</i>	23	Cords			
	N. White Cedar	2	Cords			
	Red Pine	15	Cords			
	Tamarack	2	Cords			
	White Pine	3	Cords			
7	Basswood	Sawtimber	2.4	MBF	3.4	\$850.85
	Northern Pin Oak		0.7	MBF		
	Red Oak		1.4	MBF		
	Sugar Maple		0.7	MBF		
	White Ash		0.5	MBF		
	Balsam Fir	Pulpwood	1	Cords		
	Mixed Hardwood		19	Cords		
	<i>Basswood</i>		3	Cords		
	<i>Ironwood</i>		1	Cords		
	<i>Sugar Maple</i>		9	Cords		
	<i>White Ash</i>		6	Cords		
	Mixed Oak		2	Cords		
	<i>Northern Pin Oak</i>		1	Cords		
	<i>Red Oak</i>		1	Cords		
8	Basswood	Sawtimber	9.2	MBF	20.4	\$3,858.90
	Paper Birch		1.6	MBF		
	Red Maple		0.3	MBF		
	Red Oak		0.4	MBF		
	Sugar Maple		4.4	MBF		
	White Ash		4.8	MBF		
	Balsam Fir		Pulpwood	10		
	Mixed Hardwood	102		Cords		
	<i>Basswood</i>	21		Cords		
	<i>Beech</i>	2		Cords		
	<i>Ironwood</i>	7		Cords		
	<i>Paper Birch</i>	1		Cords		

## DESCRIPTION OF TIMBER BY PAYMENT UNIT (PU), CON'T

PU	MARKET GROUP	PRODUCT	QUANTITY	UNIT	ACRES	ADVERTISE PRICE
8 con't	<i>Sugar Maple</i>	<i>Pulpwood</i>	36	<i>Cords</i>		
	<i>White Ash</i>		35	<i>Cords</i>		
	Mixed Spruce		10	<i>Cords</i>		
	<i>White Spruce</i>		10	<i>Cords</i>		
9	Basswood	Sawtimber	12.0	MBF	26.7	\$5,040.35
	Paper Birch		2.0	MBF		
	Red Maple		0.4	MBF		
	Red Oak		0.5	MBF		
	Sugar Maple		5.7	MBF		
	White Ash		6.3	MBF		
	Balsam Fir	Pulpwood	13	<i>Cords</i>		
	Mixed Hardwood		134	<i>Cords</i>		
	<i>Basswood</i>		28	<i>Cords</i>		
	<i>Beech</i>		2	<i>Cords</i>		
	<i>Ironwood</i>		9	<i>Cords</i>		
	<i>Paper Birch</i>		2	<i>Cords</i>		
	<i>Red Maple</i>		1	<i>Cords</i>		
	<i>Sugar Maple</i>		47	<i>Cords</i>		
	<i>White Ash</i>		45	<i>Cords</i>		
	Mixed Oak		1	<i>Cords</i>		
	<i>Red Oak</i>		1	<i>Cords</i>		
	Mixed Spruce		12	<i>Cords</i>		
	<i>White Spruce</i>		12	<i>Cords</i>		
	10		Red Maple	Sawtimber		
Balsam Fir		Pulpwood	7	<i>Cords</i>		
Jack Pine			3	<i>Cords</i>		
Mixed Hardwood			68	<i>Cords</i>		
<i>American Elm</i>			6	<i>Cords</i>		
<i>Black Ash</i>			7	<i>Cords</i>		
<i>Paper Birch</i>			8	<i>Cords</i>		
<i>Red Maple</i>			44	<i>Cords</i>		
<i>Sugar Maple</i>			3	<i>Cords</i>		
Mixed Spruce			56	<i>Cords</i>		
<i>Black Spruce</i>			53	<i>Cords</i>		
<i>White Spruce</i>			3	<i>Cords</i>		
N. White Cedar			72	<i>Cords</i>		
Tamarack			86	<i>Cords</i>		
White Pine			6	<i>Cords</i>		
11		Red Maple	Sawtimber	2.0	MBF	1.5
	Balsam Fir	Pulpwood	7	<i>Cords</i>		
	Mixed Aspen		3	<i>Cords</i>		
	<i>Quaking Aspen</i>		3	<i>Cords</i>		
	Mixed Hardwood		17	<i>Cords</i>		
	<i>Black Cherry</i>		1	<i>Cords</i>		
	<i>Paper Birch</i>		8	<i>Cords</i>		
	<i>Red Maple</i>		8	<i>Cords</i>		
	Mixed Oak		1	<i>Cords</i>		
	<i>Northern Pin Oak</i>		1	<i>Cords</i>		
	Mixed Spruce		1	<i>Cords</i>		
	<i>Black Spruce</i>		1	<i>Cords</i>		
	White Pine		1	<i>Cords</i>		
12	Mixed Spruce	Pulpwood	64	<i>Cords</i>	6.3	\$1,198.80
	<i>Black Spruce</i>		64	<i>Cords</i>		
	Tamarack		6	<i>Cords</i>		
	White Pine		18	<i>Cords</i>		
13	Balsam Fir	Pulpwood	2	<i>Cords</i>	12.8	\$751.20

**DESCRIPTION OF TIMBER BY PAYMENT UNIT (PU), CON'T**

PU	MARKET GROUP	PRODUCT	QUANTITY	UNIT	ACRES	ADVERTISE PRICE
13 con't	Mixed Hardwood	Pulpwood	19	Cords		
	<i>Paper Birch</i>		7	<i>Cords</i>		
	<i>Red Maple</i>		12	<i>Cords</i>		
	Mixed Oak		6	Cords		
	<i>Northern Pin Oak</i>		6	<i>Cords</i>		
	Mixed Spruce		7	Cords		
	<i>Black Spruce</i>		7	<i>Cords</i>		
	N. White Cedar		19	Cords		
	Tamarack		6	Cords		
TOTAL:			73.0	MBF		
TOTAL:			1,886	Cords		

## Sale Specific Conditions & Requirements

**Sale Name: Stinging Muskrat**

**Sale Number: 33-028-23 Seq#: 1**

### 1 - Sale Area

#### 1.2 - Boundaries

##### 1.2.1 - Painted boundaries (9/19)

The sale boundary and Payment Unit boundaries are marked and identified by blue, red and yellow paint. Exterior sale boundary lines against private property are marked with blue paint. Exterior sale boundary lines against state are marked with red paint. Interior Payment Unit boundaries are marked with yellow paint. Retention patches are marked with red paint; no harvesting activities may occur within these areas. The painted boundary line trees are not Included Timber and are to be protected unless marked with orange paint. Yellow painted trees designating an interior Payment Unit boundary are only to be cut when all surrounding Payment Units have been paid for.

### 2 - Timber Specifications

#### 2.1 - Included Timber

##### 2.1.1 - Clearcut unit(s) with unmerchantable trees (6/14)

Within Payment Unit(s) 2, 3, 5, 6, 10, 11, 12, and 13, cut all trees that are three (3) inches or more at DBH, with the following exceptions.

Within Payment Units 2 and 3, only cedar less than seven (7) inches at DBH are to be harvested.

Within Payment Unit 6, do not cut pine and oak marked with green paint.

Within Payment Unit 10, do not cut hemlock. Also do not cut cedar and oak marked with green paint.

Within Payment Unit 11, do not cut red pine.

Within Payment Unit 4, cut all trees that are two (2) inches or more at DBH, except do not cut pine and oak marked with green paint.

##### 2.1.3 - Cut tree marked unit(s) (12/08)

Within Payment Unit(s) 1, 7, 8, and 9, all trees are designated for cutting when marked with orange paint above and below stump height, regardless of merchantability.

In addition, within Payment Unit 1, cut all aspen, balm, spruce/fir, ironwood, and cherry greater than three (3) inches at DBH.

In addition, within Payment Units 7, 8, and 9, cut all aspen, balm, spruce/fir, and ironwood greater than three (3) inches at DBH.

#### 2.2 - Utilization

##### 2.2.3 - Stump heights (4/07)

Stump heights within Payment Unit(s) 4 shall not exceed 12 inches for trees greater than 10 inches DBH and 4 inches for trees smaller than 10 inches DBH.

##### 2.2.4 - Skidding length (2/14)

Skidding of unlimbed tops or lengths over 17 feet is not permissible within Payment Units 1, 7, 8, and 9.

### 3 - Payments

#### 3.3 - Pre-measured Sales

##### 3.3.4 - Dividing payment units (7/14)

Payment Unit(s) \$18,000 in value or greater may be divided at the request of the Purchaser and upon approval of the Unit Manager. Dividing Payment Units is a contract modification which requires a Timber Sale Contract Amendment. There will be only one division per Payment Unit.

## **4 - Transportation**

### 4.1 - Construction

#### 4.1.8 - Road work (1) (8/07)

The following road work is required: a minimum of 200 cubic yards of gravel must be hauled and spread by the Purchaser. About half of the gravel will be placed on the access road back to Payment Units 1 - 3 and the other half on the access road into Payment Units 4 - 12. All roadwork must be completed before any hauling takes place on either of the access roads. Gravel is available from state land, on the north side of Payment Unit 5.

### 4.2 - Maintenance

#### 4.2.1 - Hauling restriction (12/08)

Hauling may be restricted on forest roads by the Unit Manager or his/her representative. The restriction may occur during spring breakup or during other wet weather conditions.

#### 4.2.4 - Grading (10/16)

For completion of the sale, state forest roads must be graded. In general, this will require a road grader or bull dozer to shape up the roads after forest products have been hauled off site. This includes cleaning of drainage areas, grading, crowning and filling with gravel, if necessary. The grading equipment to be used must be approved by the Unit Manager or his/her representative.

### 4.4 - Access

#### 4.4.1 - Private property access (3/11)

Permission for access across private land is the responsibility of the Purchaser. The only Payment Unit that needs to be accessed through private property is Unit 13. The best access is from the north and west of the Payment Unit as shown on the Timber Sale Map. This same access can be used to access Parts of Payment Units 10, 11, and 12. Contact Dustin 906-399-1828 or Dan 906-399-0879 for landowners contact information.

## **5 - Operations**

### 5.2 - Conduct of Operations

#### 5.2.3 - Operating Restrictions

##### 5.2.3.1 - Operating restrictions (9/11)

Within Payment Unit(s) 2, 3, 5, 10, 11, 12, and 13, cutting and skidding, is limited to the period of December 1st to March 31st, unless there is an extended dry or frozen period and the sale administrator allows harvesting during that period of time. This restriction is because of low wet ground throughout the Payment Units.

##### 5.2.3.3 - Bark slippage restriction (3/09)

Within Payment Unit(s) 7, 8, and 9, cutting and skidding are not permitted during the period of April 15 to July 15. This restriction is because of bark slippage.

##### 5.2.3.4 - Oak wilt restriction, no exceptions (1/18)

Within Payment Unit(s) 1, cutting and skidding, are not permitted during the period of April 15 to July 15. No exceptions will be granted. This is necessary to reduce the spread of oak wilt.

## **6 - Safety and Fire Prevention**

### 6.2 - Signing

#### 6.2.1 - Road posting (10/20)

The Purchaser is responsible for posting and maintaining caution signs on each of the access roads (as they are used) prior to beginning operations. The road must be posted at appropriate distances from the sale area to warn of logging activity and truck traffic. Signs must be removed when harvest operations are suspended or completed. The Purchaser will provide these signs.

## **7 - Other Conditions**

### 7.3 - Contract Modifications

#### 7.3.2 - Modification for oak wilt (2/05)

Within the sale area, there may be patches of oak wilt. If oak wilt is identified within the sale area, this contract may be modified. The following modifications could occur: time of cutting, species to cut, volume to harvest, or various others dealing with the treatment of oak wilt. If a species is not specified in this contract, it shall be paid for at the average price received for that species and product.

### 7.5 - Loss

#### 7.5.1 - Deteriorating timber (7/09)

The sale area has received damage from the spruce budworm, eastern larch beetle, emerald ash borer, and oak wilt. The Purchaser should harvest the wood as soon as possible. The Department of Natural Resources is held free of responsibility of any further damage or deterioration due to delay in harvesting. The contract length has been expanded to include four winters for harvesting, but with the forest health concerns the sale should be harvested as soon as possible.



# TIMBER SALE MAP

This information provided by authority of Part 525, 1994 PA 451, as amended.

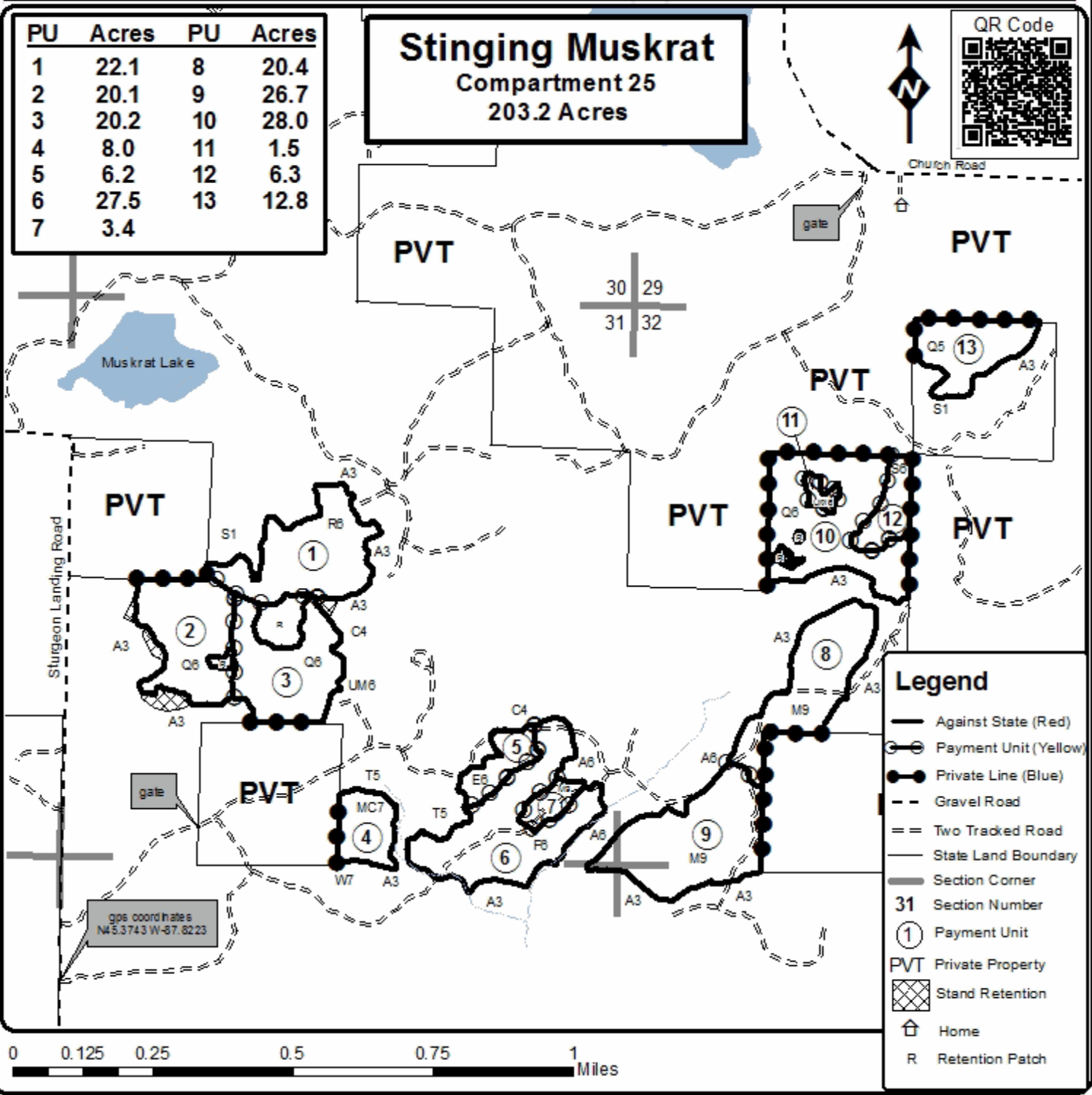
Sale Number	Year
33-028	23

Forest Management Unit	County	Mapped By	Date	Page	of
Escanaba Management Unit	Menominee County	Beaudou	9/11/2023	1	1
Township	Range	Section(s) and Subdivision(s)	Scale		
34N 35N	28W	Sec 5 - NWNW, Sec 6 - N1/2NE. Sec 31 - SENW, SWNE, N1/2SW, SE. Sec 32 - SENW, NWNE, N1/2SW, SWSW.	1:15,840		

Cover Type				Density			
A = Aspen	H = Hemlock	N = Marsh	U = Upland Brush	0 = Non Stocked	5 = Pole Timber Medium		
B = Paper Birch	J = Jack Pine	O = Oak	UM = Upland Mixed	1 = Seeding Sapling Poor	6 = Pole Timber Well		
C = Cedar	L = Lowland Brush	P = Lowland Poplar	V = Bog or Marsh	2 = Seeding Sapling Medium	7 = Saw Timber Poor		
D = Tread Bog	LM = Lowland Mixed	Q = Mixed Swamp Conifer	W = White Pine	3 = Seeding Sapling Well	8 = Saw Timber Medium		
E = Swamp Hdwoods	M = Mpl, Bch, Bach	R = Red Pine	X = Non Stocked	4 = Pole Timber Poor	9 = Saw Timber Well		
F = Spruce Fir	MC = Mixed Conifer	S = Black Spruce	Z = Water				
G = Grass	MD = Mixed Deciduous	T = Tamarack					

PU	Acres	PU	Acres
1	22.1	8	20.4
2	20.1	9	26.7
3	20.2	10	28.0
4	8.0	11	1.5
5	6.2	12	6.3
6	27.5	13	12.8
7	3.4		

**Stinging Muskrat**  
Compartment 25  
203.2 Acres



**Legend**

- Against State (Red)
- Payment Unit (Yellow)
- Private Line (Blue)
- - Gravel Road
- == Two Tracked Road
- State Land Boundary
- Section Corner
- 31 Section Number
- ① Payment Unit
- PVT Private Property
- ⊗ Stand Retention
- 🏠 Home
- R Retention Patch





## TIMBER SALE INFORMATION

Barren Aspen (33-029-23)

T35N, R28W, SEC. 30; T35N, R29W, SEC. 25; T35N, R29W, SEC. 36.  
Menominee County (Advertised Price \$50,629.90)

SALE NOTE: All Payment Units can be accessed through state land. All Payment Units must be harvested between December 1st and March 31st to minimize soil disturbance.

A timber sale contract for this lump sum, sealed bid timber sale will be awarded to the responsible bidder offering the highest sealed bid price. All units of volume listed below were estimated using the Inventory Manager computer program and the new Michigan taper model. Bids must be at or above the following advertised price for each product and species:

<u>PRODUCTS &amp; SPECIES</u>	<u>ESTIMATED UNITS*</u>	<u>ADVERTISED PRICE</u>
Sawtimber		
Northern Pin Oak	24.1 MBF	\$ 114.00 / MBF
Red Maple	11.3 MBF	\$ 126.00 / MBF
Red Oak	2.5 MBF	\$ 93.00 / MBF
Pulpwood		
Balsam Fir	4 Cords	\$ 10.80 / Cord
Jack Pine	12 Cords	\$ 38.40 / Cord
Mixed Aspen	1,222 Cords	\$ 24.10 / Cord
Mixed Hardwood	292 Cords	\$ 17.10 / Cord
Mixed Oak	314 Cords	\$ 19.10 / Cord
Red Pine	48 Cords	\$ 41.70 / Cord
White Pine	124 Cords	\$ 26.45 / Cord

\* The total volume is statistically estimated within plus (+) or minus (-) 11.39 percent. There are an estimated 2,091 cords on this timber sale, plus or minus 238 cords at the 95% confidence level. The estimated units are final and not subject to adjustment. Prospective bidders are urged to examine this timber and to make their own estimates of quantity and quality.

### **BOND AND PAYMENT SCHEDULE:**

1. A bond in the amount of \$2,531.00 to insure faithful performance of the conditions of the contract will be deposited by the successful bidder within 21 days of the sale award.
2. Cutting in any sale or unit without the required advance payment would be considered a trespass.
3. Total payment must be paid in advance or according to the following schedule :
  - (a) Ten percent (10%) of the sale value must be paid within 21 days of the sale award.
  - (b) The 10% down payment will be credited towards the first unit cut.
  - (c) Payment for each of the following units must be made before cutting begins in that unit:
 

PAYMENT UNIT NUMBER	PERCENT OF TOTAL SALE VALUE
01	16.2%
02	19.1%
03	12.2%
04	13.1%
05	10.2%
06	23.3%
07	5.9%
4. If no cutting takes place, the 10% down payment will not be refunded.
5. Operations on the contract issued will terminate on 06/30/2026.

### **SALE STATISTICS**

Volumes were calculated in cubic feet using the Michigan taper model. Cubic foot volume includes all wood inside bark for the product indicated. For display purposes, cubic feet were converted to cords and MBF using a simple conversion factor, e.g. 79 cubic feet per cord and 185 cubic feet per MBF. The cubic foot volumes are precise; the cords and MBF volumes are not. Cubic foot volume cannot be directly converted to cords or boards with precision.

## SALE VOLUMES

The total estimated sale volume may not equal the sum of the species/products due to the nature of statistical calculations associated with double sampling methodology.

VOLUME			STATISTICAL RANGE IN CORDS	
TOTAL CUBIC FEET	TOTAL CORDS	PERCENT ERROR	MINIMUM	MAXIMUM
165,226	2,091	11.39%	1,853	2,330

## VDU VOLUMES

A VDU is a Volume Determination Unit. Volumes and their associated statistics are calculated at the VDU level and summarized to the sale level. There is often a one to one relationship between a VDU and a Payment Unit, but not always, depending on the cruise design. Refer to the VDU TO PAYMENT UNIT table.

	VOLUME			RANGE IN CORDS	
VDU	TOTAL CUBIC FEET	TOTAL CORDS	PERCENT ERROR	MINIMUM	MAXIMUM
27	20,133	255	29.52%	180	330
29	56,947	721	17.06%	598	844
32	23,194	294	34.56%	192	395
48	16,426	208	44.57%	115	301
60	37,629	476	16.87%	396	557
63	10,897	138	44.53%	77	199
<b>TOTAL:</b>	<b>165,226</b>	<b>2,091</b>		<b>1,557</b>	<b>2,626</b>

## VDU TO PAYMENT UNIT

When a VDU is associated with more than one Payment Unit (PU), the VDU volumes are assigned to the PU based on acres of the VDU within the PU.

VDU	VDU ACRES	PU	PU ACRES
27	26.8	3	26.8
29	43.7	1	20.0
		2	23.7
32	18.1	4	18.1
48	9.3	5	9.3
60	19.1	6	19.1
63	11.1	7	11.1
<b>TOTAL:</b>	<b>128.1</b>		<b>128.1</b>

**DESCRIPTION OF TIMBER BY PAYMENT UNIT (PU)**

PU	MARKET GROUP	PRODUCT	QUANTITY	UNIT	ACRES	ADVERTISE PRICE
1	Northern Pin Oak	Sawtimber	4.7	MBF	20.0	\$8,177.60
	Mixed Aspen	Pulpwood	281	Cords		
	<i>B. T. Aspen</i>		14	Cords		
	<i>Quaking Aspen</i>		267	Cords		
	Mixed Hardwood		14	Cords		
	<i>Black Cherry</i>		10	Cords		
	<i>Red Maple</i>		4	Cords		
	Mixed Oak		33	Cords		
	<i>Northern Pin Oak</i>		33	Cords		
	2	Northern Pin Oak	Sawtimber	5.6		
Mixed Aspen		Pulpwood	333	Cords		
<i>B. T. Aspen</i>			17	Cords		
<i>Quaking Aspen</i>			316	Cords		
Mixed Hardwood			16	Cords		
<i>Black Cherry</i>			12	Cords		
<i>Red Maple</i>			4	Cords		
Mixed Oak			39	Cords		
<i>Northern Pin Oak</i>			39	Cords		
3		Northern Pin Oak	Sawtimber	6.4	MBF	26.8
	Jack Pine	Pulpwood	4	Cords		
	Mixed Aspen		157	Cords		
	<i>B. T. Aspen</i>		3	Cords		
	<i>Quaking Aspen</i>		154	Cords		
	Mixed Hardwood		14	Cords		
	<i>Black Cherry</i>		3	Cords		
	<i>Paper Birch</i>		1	Cords		
	<i>Red Maple</i>		10	Cords		
	Mixed Oak		63	Cords		
	<i>Northern Pin Oak</i>		63	Cords		
	White Pine		2	Cords		
4	Northern Pin Oak	Sawtimber	1.9	MBF	18.1	\$6,627.80
	Red Maple		7.5	MBF		
	Jack Pine	Pulpwood	6	Cords		
	Mixed Aspen		18	Cords		
	<i>B. T. Aspen</i>		5	Cords		
	<i>Quaking Aspen</i>		13	Cords		
	Mixed Hardwood		119	Cords		
	<i>Black Cherry</i>		4	Cords		
	<i>Paper Birch</i>		4	Cords		
	<i>Red Maple</i>		111	Cords		
	Mixed Oak		35	Cords		
	<i>Northern Pin Oak</i>		35	Cords		
	Red Pine		11	Cords		
White Pine		62	Cords			
5	Northern Pin Oak	Sawtimber	4.1	MBF	9.3	\$5,166.40
	Red Maple		2.8	MBF		
	Red Oak		0.4	MBF		
	Mixed Aspen	Pulpwood	107	Cords		
	<i>B. T. Aspen</i>		80	Cords		
	<i>Quaking Aspen</i>		27	Cords		
	Mixed Hardwood		37	Cords		
	<i>Paper Birch</i>		22	Cords		
	<i>Red Maple</i>		15	Cords		
	Mixed Oak		40	Cords		
	<i>Northern Pin Oak</i>		37	Cords		
	<i>Red Oak</i>		3	Cords		

**DESCRIPTION OF TIMBER BY PAYMENT UNIT (PU), CON'T**

PU	MARKET GROUP	PRODUCT	QUANTITY	UNIT	ACRES	ADVERTISE PRICE
5 con't	Red Pine	Pulpwood	8	Cords		
6	Northern Pin Oak	Sawtimber	1.4	MBF	19.1	\$11,842.60
	Red Maple		1.0	MBF		
	Red Oak		2.1	MBF		
	Jack Pine	Pulpwood	2	Cords		
	Mixed Aspen		269	Cords		
	<i>B. T. Aspen</i>		169	<i>Cords</i>		
	<i>Quaking Aspen</i>		100	<i>Cords</i>		
	Mixed Hardwood		78	Cords		
	<i>Red Maple</i>		78	<i>Cords</i>		
	Mixed Oak		56	Cords		
	<i>Northern Pin Oak</i>		53	<i>Cords</i>		
	<i>Red Oak</i>		3	<i>Cords</i>		
	Red Pine		22	Cords		
	White Pine		56	Cords		
7	Balsam Fir	Pulpwood	4	Cords	11.1	\$2,970.80
	Mixed Aspen		57	Cords		
	<i>B. T. Aspen</i>		24	<i>Cords</i>		
	<i>Quaking Aspen</i>		33	<i>Cords</i>		
	Mixed Hardwood		14	Cords		
	<i>Red Maple</i>		14	<i>Cords</i>		
	Mixed Oak		48	Cords		
	<i>Northern Pin Oak</i>		48	<i>Cords</i>		
	Red Pine		7	Cords		
	White Pine		4	Cords		
TOTAL:			37.9	MBF		
TOTAL:			2,016	Cords		

# Sale Specific Conditions & Requirements

**Sale Name: Barren Aspen**

**Sale Number: 33-029-23 Seq#: 1**

## 1 - Sale Area

### 1.2 - Boundaries

#### 1.2.1 - Painted boundaries (9/19)

The sale boundary and Payment Unit boundaries are marked and identified by blue, red and yellow paint. Exterior sale boundary lines against private property are marked with blue paint. Exterior sale boundary lines against state are marked with red paint. Interior Payment Unit boundaries are marked with yellow paint. The painted boundary line trees are not Included Timber and are to be protected unless marked with orange paint. Yellow painted trees designating an interior Payment Unit boundary are only to be cut when all surrounding Payment Units have been paid for.

## 2 - Timber Specifications

### 2.1 - Included Timber

#### 2.1.1 - Clearcut unit(s) with unmerchantable trees (6/14)

Within Payment Unit(s) 1, 2, 3, 5, & 6, cut all trees that are three (3) inches or more at DBH, except do not cut trees marked with green paint.

#### 2.1.2 - Clearcut unit(s) w/o unmerchantable trees (8/11)

Within Payment Unit(s) 4 & 7, cut all trees which meet minimum piece specifications in 2.2 Utilization, except do not cut trees marked with green paint.

### 2.2 - Utilization

#### 2.2.3 - Stump heights (4/07)

Stump heights within Payment Unit(s) 1, 2, 3, 5, & 6, shall not exceed 8 inches for all trees. This is in order to facilitate planting operations.

## 3 - Payments

### 3.3 - Pre-measured Sales

#### 3.3.4 - Dividing payment units (7/14)

Payment Unit(s) \$18,000 in value or greater may be divided at the request of the Purchaser and upon approval of the Unit Manager. Dividing Payment Units is a contract modification which requires a Timber Sale Contract Amendment. There will be only one division per Payment Unit.

## 4 - Transportation

### 4.1 - Construction

#### 4.1.8 - Road work (1) (8/07)

The following road work is required: the Purchaser must haul and spread a minimum of 100 cubic feet of gravel onto the Oak Hill Road. The exact locations will be identified during the pre-sale meeting. The roadwork must be completed prior to any hauling from Payment Units 6 & 7. Gravel is available from a state pit just west of Payment Unit 7 along the Oak Hill Road.

#### 4.1.12 - No new roads (1/12)

No new roads will be permitted in any Payment Unit. All operations are limited to existing roads. Skid trails only will be allowed.

### 4.2 - Maintenance

#### 4.2.1 - Hauling restriction (12/08)

Hauling may be restricted on forest roads by the Unit Manager or his/her representative. The restriction may occur during spring breakup or during other wet weather conditions.

#### 4.2.4 - Grading (10/16)

For completion of the sale, state forest roads must be graded. In general, this will require a road grader or bull dozer to shape up the roads after forest products have been hauled off site. This includes cleaning of drainage areas, grading, crowning and filling with gravel, if necessary. The grading equipment to be used must be approved by the Unit Manager or his/her representative.

## **5 - Operations**

### 5.2 - Conduct of Operations

#### 5.2.3 - Operating Restrictions

##### 5.2.3.1 - Operating restrictions (9/11)

Within Payment Unit(s) 1 - 7 cutting and skidding are limited to the period of December 1st to March 31st, unless there is snow cover or an extended frozen period and the sale administrator allows harvesting activities during that period of time. This restriction is to minimize soil disturbance.

## **6 - Safety and Fire Prevention**

### 6.2 - Signing

#### 6.2.1 - Road posting (10/20)

The Purchaser is responsible for posting and maintaining caution signs on Sturgeon Landing Road and the Oak Hill Road prior to beginning operations. The road must be posted at appropriate distances from the sale area to warn of logging activity and truck traffic. Signs must be removed when harvest operations are suspended or completed. The Purchaser will provide these signs.

## **7 - Other Conditions**

### 7.3 - Contract Modifications

#### 7.3.2 - Modification for oak wilt (2/05)

Within the sale area, there may be patches of oak wilt. If oak wilt is identified within the sale area, this contract may be modified. The following modifications could occur: time of cutting, species to cut, volume to harvest, or various others dealing with the treatment of oak wilt. If a species is not specified in this contract, it shall be paid for at the average price received for that species and product.



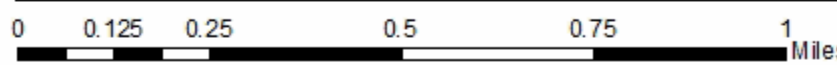
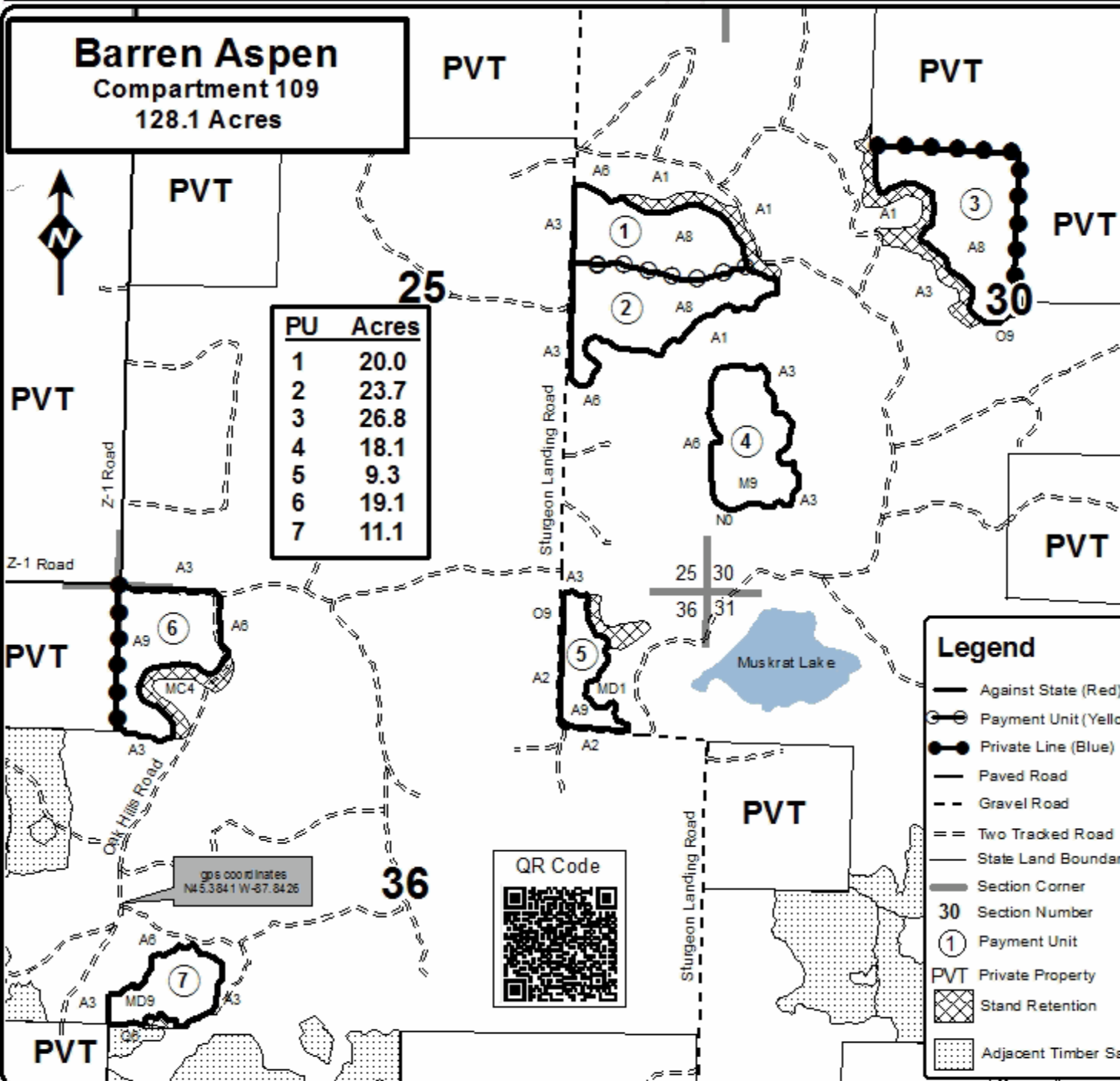
# TIMBER SALE MAP

This information provided by authority of Part 525, 1994 PA 451, as amended.

Sale Number	Year
33-029	23

Forest Management Unit	County	Mapped By	Date	Page	of
Escanaba Management Unit	Menominee County	Beaudou	9/14/2023	1	1
Township	Range	Section(s) and Subdivision(s)	Scale		
35N	28W 29W	Sec 30 - S1/2NW, N1/2SW, SWSW, NWSE. Sec 25 - SENE, NESE. Sec 36 - W1/2NW, NENE, NWSW.	1:15,840		

Cover Type				Density	
A = Aspen	H = Hemlock	N = Marsh	U = Upland Brush	0 = Non Stocked	5 = Pole Timber Medium
B = Paper Birch	J = Jack Pine	O = Oak	UM = Upland Mixed	1 = Seeding Sapling Poor	6 = Pole Timber Well
C = Cedar	L = Lowland Brush	P = Lowland Poplar	V = Bog or Marsh	2 = Seeding Sapling Medium	7 = Saw Timber Poor
D = Tread Bog	LM = Lowland Mixed	Q = Mixed Swamp Conifer	W = White Pine	3 = Seeding Sapling Well	8 = Saw Timber Medium
E = Swamp Hdwoods	M = Mpl, Bch, Bach	R = Red Pine	X = Non Stocked	4 = Pole Timber Poor	9 = Saw Timber Well
F = Spruce Fir	MC = Mixed Conifer	S = Black Spruce	Z = Water		
G = Grass	MD = Mixed Deciduous	T = Tamarack			







Stinging Muskrat (33-028-23)

T34N, R28W, SEC. 5; T34N, R28W, SEC. 6; T35N, R28W, SEC. 31; T35N, R28W,

In response to the notice of sale to be held 3:00 p.m. (local time) on December 5, 2023, I am hereby submitting my sealed bid (firm offer) for the following forest products to be cut. Bids for individual species must be at or above the advertised price. All non-responsive bid forms may be rejected.

<u>PRODUCTS &amp; SPECIES</u>	<u>ESTIMATED VOLUME*</u>	<u>ADVERTISED PRICE</u>	<u>BID PRICE/UNIT</u>
<b>Sawtimber</b>			
Basswood	23.6 MBF	\$ 42.00/MBF	\$ _____
Northern Pin Oak	6.9 MBF	\$ 105.00/MBF	\$ _____
Paper Birch	4.2 MBF	\$ 81.00/MBF	\$ _____
Red Maple	10.0 MBF	\$ 116.00/MBF	\$ _____
Red Oak	3.2 MBF	\$ 86.00/MBF	\$ _____
Sugar Maple	13.5 MBF	\$ 244.00/MBF	\$ _____
White Ash	11.6 MBF	\$ 80.00/MBF	\$ _____
<b>Pulpwood</b>			
Balsam Fir	211 Cords	\$ 9.95/Cord	\$ _____
Jack Pine	18 Cords	\$ 35.40/Cord	\$ _____
Mixed Aspen	203 Cords	\$ 22.20/Cord	\$ _____
Mixed Hardwood	506 Cords	\$ 15.80/Cord	\$ _____
Mixed Oak	60 Cords	\$ 17.60/Cord	\$ _____
Mixed Spruce	317 Cords	\$ 10.50/Cord	\$ _____
N. White Cedar	225 Cords	\$ 8.70/Cord	\$ _____
Red Pine	77 Cords	\$ 38.50/Cord	\$ _____
Tamarack	210 Cords	\$ 14.45/Cord	\$ _____
White Pine	59 Cords	\$ 24.45/Cord	\$ _____

\*The volumes are statistically estimated within plus (+) or minus (-) 9.51 percent at 95% confidence level. These estimated volumes are final and not subject to adjustment. Prospective bidders are urged to examine this timber and to make their own estimates of quantity and quality.

I understand that any or all bids may be rejected. All bids must be signed and all bid items must be bid or the bid form may be rejected. I also understand that consideration and awarding a contract will be based upon my past performance and ability to complete the contract based upon equipment and staffing subject to my control.

FEDERAL ID: \_\_\_\_\_ or SOCIAL SECURITY NUMBER: \_\_\_\_\_

Company or individual bidding: \_\_\_\_\_

Company representative's name: \_\_\_\_\_

Address: \_\_\_\_\_

City: \_\_\_\_\_ State: \_\_\_\_\_ Zip: \_\_\_\_\_

IF AVAILABLE, PLEASE PLACE THE PERSONALIZED LABEL FROM YOUR PROSPECTUS IN THE ABOVE BOX.

Individual or company representative's signature: \_\_\_\_\_ Date: \_\_\_\_\_

Phone number : \_\_\_\_\_ Email (optional): \_\_\_\_\_

**THE WINNING BIDDER MUST COMPLETE THE VERIFICATION OF WORKER'S DISABILITY COMPENSATION ACT COMPLIANCE (ON REVERSE SIDE IF DOUBLE SIDED) WITHIN 21 DAYS OF SALE AWARD DATE**



<b>FOR DEPARTMENT USE ONLY</b>
Sale Number (XX - XXX - XX - XX)
Forest Management Unit:

## TIMBER SALE VERIFICATION OF WORKER'S DISABILITY COMPENSATION ACT COMPLIANCE

As required by Act 317, P.A. 1969 (Worker's Compensation) and  
Part 5 of Act 451 of 1994, as amended.

### VERIFICATION OF WORKER'S DISABILITY COMPENSATION ACT COMPLIANCE

- This verification must be completed and submitted within 21 days of contract award and prior to the issuance of the timber sale contract.
- In addition, if boxes 2B or 2C are checked, then Notice of Exclusion or Certificate of Insurance must be submitted within twenty-one (21) days of the contract award and prior to the issuance of the timber sale contract.
- All information must be typed or printed except for written signatures.

Please Check Appropriate Categories:

- My business is organized as (you **must** check one of the boxes below):
  - Sole Proprietorship (individual)
  - Partnership
  - Corporation
- You **must** check one of the boxes below:
  - I certify my business is a sole proprietorship and it has no employees but the sole proprietor. I am not subject to the Worker's Compensation Laws.
  - I certify my business has satisfied its obligation to the Worker's Compensation Act through the use of an approved Notice of Exclusion (BWC-337, Rev. 5/96). I will provide a copy of the Notice of Exclusion within 21 days of the contract award. (For questions or a copy of the BWC-337, please call the Worker's Compensation Bureau at 517-322-1195).
  - I certify my business has a Worker's Compensation Policy. I will provide an original Certificate of Insurance within twenty-one (21) days of the contract award.
- If you have checked item 2(A) or 2(B), you **must** indicate the number of **both** full-time and part-time employees, other than yourself, including family members and active partners (if none, you must enter "0").

\_\_\_\_\_ Full-time Employees

\_\_\_\_\_ Part-time Employees

Name of Business	Federal ID (or) Social Security No.	
Address	Telephone (      )	
City	State	ZIP

*I hereby certify that the above information is true and correct. I agree to notify the Michigan DNR of any changes that occur in factors affecting my coverage during any of my present and future operations.*

\_\_\_\_\_  
Signature of Owner or Authorized Representative

\_\_\_\_\_  
Title

\_\_\_\_\_  
Date

Please complete the "SEALED BID" information on the next page

Barren Aspen (33-029-23)

T35N, R28W, SEC. 30; T35N, R29W, SEC. 25; T35N, R29W, SEC. 36; Menominee

In response to the notice of sale to be held 3:00 p.m. (local time) on December 5, 2023, I am hereby submitting my sealed bid (firm offer) for the following forest products to be cut. Bids for individual species must be at or above the advertised price. All non-responsive bid forms may be rejected.

<u>PRODUCTS &amp; SPECIES</u>	<u>ESTIMATED VOLUME*</u>	<u>ADVERTISED PRICE</u>	<u>BID PRICE/UNIT</u>
<b>Sawtimber</b>			
Northern Pin Oak	24.1 MBF	\$ 114.00/MBF	\$ _____
Red Maple	11.3 MBF	\$ 126.00/MBF	\$ _____
Red Oak	2.5 MBF	\$ 93.00/MBF	\$ _____
<b>Pulpwood</b>			
Balsam Fir	4 Cords	\$ 10.80/Cord	\$ _____
Jack Pine	12 Cords	\$ 38.40/Cord	\$ _____
Mixed Aspen	1,222 Cords	\$ 24.10/Cord	\$ _____
Mixed Hardwood	292 Cords	\$ 17.10/Cord	\$ _____
Mixed Oak	314 Cords	\$ 19.10/Cord	\$ _____
Red Pine	48 Cords	\$ 41.70/Cord	\$ _____
White Pine	124 Cords	\$ 26.45/Cord	\$ _____

\*The volumes are statistically estimated within plus (+) or minus (-) 11.39 percent at 95% confidence level. These estimated volumes are final and not subject to adjustment. Prospective bidders are urged to examine this timber and to make their own estimates of quantity and quality.

I understand that any or all bids may be rejected. All bids must be signed and all bid items must be bid or the bid form may be rejected. I also understand that consideration and awarding a contract will be based upon my past performance and ability to complete the contract based upon equipment and staffing subject to my control.

FEDERAL ID: \_\_\_\_\_ or SOCIAL SECURITY NUMBER: \_\_\_\_\_

Company or individual bidding: \_\_\_\_\_

Company representative's name: \_\_\_\_\_

Address: \_\_\_\_\_

City: \_\_\_\_\_ State: \_\_\_\_\_ Zip: \_\_\_\_\_

IF AVAILABLE, PLEASE PLACE THE PERSONALIZED LABEL FROM YOUR PROSPECTUS IN THE ABOVE BOX.

Individual or company representative's signature: \_\_\_\_\_ Date: \_\_\_\_\_

Phone number : \_\_\_\_\_ Email (optional): \_\_\_\_\_

**THE WINNING BIDDER MUST COMPLETE THE VERIFICATION OF WORKER'S DISABILITY COMPENSATION ACT COMPLIANCE (ON REVERSE SIDE IF DOUBLE SIDED) WITHIN 21 DAYS OF SALE AWARD DATE**



<b>FOR DEPARTMENT USE ONLY</b>	
Sale Number (XX - XXX - XX - XX)	
Forest Management Unit:	

### TIMBER SALE VERIFICATION OF WORKER'S DISABILITY COMPENSATION ACT COMPLIANCE

As required by Act 317, P.A. 1969 (Worker's Compensation) and  
Part 5 of Act 451 of 1994, as amended.

#### VERIFICATION OF WORKER'S DISABILITY COMPENSATION ACT COMPLIANCE

- This verification must be completed and submitted within 21 days of contract award and prior to the issuance of the timber sale contract.
- In addition, if boxes 2B or 2C are checked, then Notice of Exclusion or Certificate of Insurance must be submitted within twenty-one (21) days of the contract award and prior to the issuance of the timber sale contract.
- All information must be typed or printed except for written signatures.

Please Check Appropriate Categories:

1. My business is organized as (you **must** check one of the boxes below):
  - A.  Sole Proprietorship (individual)
  - B.  Partnership
  - C.  Corporation
2. You **must** check one of the boxes below:
  - A.  I certify my business is a sole proprietorship and it has no employees but the sole proprietor. I am not subject to the Worker's Compensation Laws.
  - B.  I certify my business has satisfied its obligation to the Worker's Compensation Act through the use of an approved Notice of Exclusion (BWC-337, Rev. 5/96). I will provide a copy of the Notice of Exclusion within 21 days of the contract award. (For questions or a copy of the BWC-337, please call the Worker's Compensation Bureau at 517-322-1195).
  - C.  I certify my business has a Worker's Compensation Policy. I will provide an original Certificate of Insurance within twenty-one (21) days of the contract award.
3. If you have checked item 2(A) or 2(B), you **must** indicate the number of **both** full-time and part-time employees, other than yourself, including family members and active partners (if none, you must enter "0").

\_\_\_\_\_ Full-time Employees

\_\_\_\_\_ Part-time Employees

Name of Business		Federal ID (or) Social Security No.	
Address		Telephone (       )	
City	State	ZIP	

*I hereby certify that the above information is true and correct. I agree to notify the Michigan DNR of any changes that occur in factors affecting my coverage during any of my present and future operations.*

\_\_\_\_\_  
Signature of Owner or Authorized Representative

\_\_\_\_\_  
Title

\_\_\_\_\_  
Date

Please complete the "SEALED BID" information on the next page

South Schuster (33-007-23)  
T35N, R25W, SEC. 4; T36N, R25W, SEC. 33; Menominee COUNTY

In response to the notice of sale to be held 3:00 p.m. (local time) on December 5, 2023, I am hereby submitting my sealed bid (firm offer) for the following forest products to be cut. Bids for individual species must be at or above the advertised price. All non-responsive bid forms may be rejected.

<u>PRODUCTS &amp; SPECIES</u>	<u>ESTIMATED VOLUME*</u>	<u>ADVERTISED PRICE</u>	<u>BID PRICE/UNIT</u>
<b>Sawtimber</b>			
Black Cherry	2.5 MBF	\$ 74.00/MBF	\$ _____
Paper Birch	5.8 MBF	\$ 102.00/MBF	\$ _____
Red Maple	60.6 MBF	\$ 145.00/MBF	\$ _____
Sugar Maple	5.3 MBF	\$ 304.00/MBF	\$ _____
Yellow Birch	2.3 MBF	\$ 90.00/MBF	\$ _____
<b>Pulpwood</b>			
Balsam Fir	82 Cords	\$ 12.45/Cord	\$ _____
Green Ash	16 Cords	\$ 7.50/Cord	\$ _____
Mixed Aspen	49 Cords	\$ 27.80/Cord	\$ _____
Mixed Hardwood	288 Cords	\$ 19.75/Cord	\$ _____
Red Pine	116 Cords	\$ 48.10/Cord	\$ _____
White Pine	292 Cords	\$ 30.55/Cord	\$ _____
White Spruce	43 Cords	\$ 13.15/Cord	\$ _____

\*The volumes are statistically estimated within plus (+) or minus (-) 20.50 percent at 95% confidence level. These estimated volumes are final and not subject to adjustment. Prospective bidders are urged to examine this timber and to make their own estimates of quantity and quality.

I understand that any or all bids may be rejected. All bids must be signed and all bid items must be bid or the bid form may be rejected. I also understand that consideration and awarding a contract will be based upon my past performance and ability to complete the contract based upon equipment and staffing subject to my control.

FEDERAL ID: \_\_\_\_ - \_\_\_\_ - \_\_\_\_ or SOCIAL SECURITY NUMBER: \_\_\_\_ - \_\_\_\_ - \_\_\_\_

Company or individual bidding: \_\_\_\_\_

Company representative's name: \_\_\_\_\_

Address: \_\_\_\_\_

City: \_\_\_\_\_ State: \_\_\_\_\_ Zip: \_\_\_\_\_

IF AVAILABLE, PLEASE PLACE THE PERSONALIZED LABEL FROM YOUR PROSPECTUS IN THE ABOVE BOX.

Individual or company representative's signature: \_\_\_\_\_ Date: \_\_\_\_\_

Phone number : \_\_\_\_\_ Email (optional): \_\_\_\_\_

**THE WINNING BIDDER MUST COMPLETE THE VERIFICATION OF WORKER'S DISABILITY COMPENSATION ACT COMPLIANCE (ON REVERSE SIDE IF DOUBLE SIDED) WITHIN 21 DAYS OF SALE AWARD DATE**



# TIMBER SALE VERIFICATION OF WORKER'S DISABILITY COMPENSATION ACT COMPLIANCE

As required by Act 317, P.A. 1969 (Worker's Compensation) and  
Part 5 of Act 451 of 1994, as amended.

FOR DEPARTMENT USE ONLY	
Sale Number (XX - XXX - XX - XX)	
Forest Management Unit:	

## VERIFICATION OF WORKER'S DISABILITY COMPENSATION ACT COMPLIANCE

- This verification must be completed and submitted within 21 days of contract award and prior to the issuance of the timber sale contract.
- In addition, if boxes 2B or 2C are checked, then Notice of Exclusion or Certificate of Insurance must be submitted within twenty-one (21) days of the contract award and prior to the issuance of the timber sale contract.
- All information must be typed or printed except for written signatures.

Please Check Appropriate Categories:

1. My business is organized as (you **must** check one of the boxes below):
  - A.  Sole Proprietorship (individual)
  - B.  Partnership
  - C.  Corporation
2. You **must** check one of the boxes below:
  - A.  I certify my business is a sole proprietorship and it has no employees but the sole proprietor. I am not subject to the Worker's Compensation Laws.
  - B.  I certify my business has satisfied its obligation to the Worker's Compensation Act through the use of an approved Notice of Exclusion (BWC-337, Rev. 5/96). I will provide a copy of the Notice of Exclusion within 21 days of the contract award. (For questions or a copy of the BWC-337, please call the Worker's Compensation Bureau at 517-322-1195).
  - C.  I certify my business has a Worker's Compensation Policy. I will provide an original Certificate of Insurance within twenty-one (21) days of the contract award.
3. If you have checked item 2(A) or 2(B), you **must** indicate the number of **both** full-time and part-time employees, other than yourself, including family members and active partners (if none, you must enter "0").

\_\_\_\_\_ Full-time Employees

\_\_\_\_\_ Part-time Employees

Name of Business		Federal ID (or) Social Security No.	
Address		Telephone (       )	
City	State	ZIP	

*I hereby certify that the above information is true and correct. I agree to notify the Michigan DNR of any changes that occur in factors affecting my coverage during any of my present and future operations.*

\_\_\_\_\_  
Signature of Owner or Authorized Representative

\_\_\_\_\_  
Title

\_\_\_\_\_  
Date

Please complete the "SEALED BID" information on the next page