



**DEPARTMENT OF NATURAL RESOURCES
STATE OF MICHIGAN
TIMBER SALE PROSPECTUS #7621**

SCHEDULED SALE DATE AND TIME: 9:00 a.m. (local time) on June 5, 2025.

LOCATION: BARAGA MGMT UNIT, 427 US 41 NORTH, BARAGA, MI 49908.

PROSPECTUS NOTE: The bidder is advised to inspect the sale area and review the location, estimated volumes, operating costs and contract terms of proposed sales. Please be aware that some landowners may request 60 days or more notice for access across their land.

Notice is hereby given that bids will be received by the Unit Manager, BARAGA MANAGEMENT UNIT, for certain timber on the following described lands:

Dead Sled Pulp (11-003-25) / T52N, R30W, SEC. 32, SESW,SE.

Baraga County, Advertised Price \$44,404.35, 100.7 Acres, Aspen, Hardwood.

SALE NOTE: Access may be through private or other public land.

Mike's Mix (11-010-25) / T48N, R32W, SEC. 4 , NW,SWNE,E1/2SW.

Baraga County, Advertised Price \$58,737.95, 85.6 Acres, Red Pine, Spruce/Fir/Tamarack.

GNA2 Hare Ball (11-810-25) / T47N, R38W, SEC. 3 , N1/2NE.

T48N, R38W, SEC. 21, SWSW.

T48N, R38W, SEC. 26, SWSW.

T48N, R38W, SEC. 27, S1/2SW,S1/2SE.

T48N, R38W, SEC. 28, NWNW,S1/2NW,E1/2SW,SE.

T48N, R38W, SEC. 29, NENE.

T48N, R38W, SEC. 33, E1/2NW,NE,N1/2SE,SESE.

T48N, R38W, SEC. 34, NW,NE,SW,SE.

T48N, R38W, SEC. 35, NWNW,S1/2NW,N1/2SW.

Ontonagon County, Advertised Price \$261,216.85, 583.4 Acres, Aspen, Hardwood.

SALE NOTE: Access may be through private land.

BID INSTRUCTIONS (VER. 10/10/2022):

1. Scheduled Bid Location, Date, and Time (2/11)

Bids must be received by the Unit Manager, BARAGA OFFICE, 427 US 41 North, Baraga, MI 49908, no later than 9:00 a.m. (local time) on June 5, 2025. For further information concerning this sale, contact Brad Carlson at 906-353-6651.

2. Bidder's Qualifications (10/22)

If all or part of a timber sale was prepared by a private contractor, the contractor and that contractor's company are not permitted to bid on the timber sale. A person must be 18 years of age or older to purchase timber. Permanent employees of the Department of Natural Resources or members of their immediate household may not bid. Former employees, in the permanent or seasonal class, may not bid until 3 months after the last day of active duty. Bids will not be accepted from individuals or companies appearing on the DNR/FRD No-Bid List. This list contains the names of purchasers who previously failed to execute a contract within 21-days or who have a history of poor performance.

3. Preparation of Sealed Bids (5/16)

Bid Forms may be completed online thru Michigan DNR Timber Sale Online Bidding (OLB) at www.michigan.gov/timberbidding or by completing the hardcopy Bid Form found in the Timber Sale Prospectus. Hardcopy Bid Forms shall be manually signed in ink. Registration in OLB is considered your 'signature' for all bids submitted thru that system. Bid prices must be entered for each species and product in the Bid Price column for all material subject to bidding and all fill-in blanks must be completed. If erasures or other changes appear on the hardcopy Bid Form, each erasure or change must be initialed by the person signing the bid.

4. Submission of Sealed Bids (5/16)

Bid forms may be obtained from the Unit Manager or thru OLB. Bids may be submitted hardcopy or thru OLB. All hardcopy bids must be submitted on the bid form and in an envelope clearly identified as described in this section. NOTE: Only one bid form per bid envelope. Sealed bids must be submitted to the Unit office designated in the prospectus and must be submitted at or prior to the time established in the prospectus. The envelope should show on the outside (a) the sale name or number and (b) the date and time of bid opening, as shown in the prospectus. Bids received after the time specified in the sale prospectus are late bids and will be rejected.

It is possible for a bidder to submit multiple bids on a single sale. For example, a bid may be submitted hardcopy and a bid may be submitted thru OLB. Or, two bidders from the same company could both submit bids on the same sale. If this were to happen, the State would accept all bids received and award the contract accordingly. All bidding and contractual requirements would apply to all bids received.

5. Public Opening of Sealed Bids (7/16)

If conditions permit, the sealed bids will be publicly opened and posted at the time and place set in the prospectus.

If a bidder, present at a bid opening, has submitted bids on more than one sale, that bidder may withdraw their unopened bid envelopes or announce the withdrawal of their online bid after being declared the successful bidder on one sale.

6. Award of Contract (1/11)

Award of the contract will be made to the Bidder whose bid, conforming to the prospectus, is most advantageous to the State of Michigan on the basis of total value at rates bid for the estimated quantities. The State reserves the right to reject any bid or waive any minor irregularity in bids received. A written award mailed (or otherwise furnished) to the successful Bidder shall be deemed to result in a binding contract without further action by either party.

7. Down Payment (1/11)

The Bidder to whom award is made must make a down payment within 21 days of the sale award. The amount of the down payment will be calculated as shown in the Bond and Payment Schedule of this prospectus. Only cash may be used to meet this requirement.

8. Performance Security (1/11)

As guarantee of faithful performance, a cash bond, certificate of deposit, surety bond or irrevocable letter of credit (LOC) is required within 21 days of the sale award. The amount of the performance security is shown in the Bond and Payment Schedule of this prospectus. If an LOC or surety is used, the coverage must extend for at least 6 months

beyond the contract expiration.

9. Worker's Compensation (10/22)

Purchaser shall obtain worker's compensation insurance to cover claims under Michigan's Worker's Disability Compensation Act of 1969 or similar employee benefit act of any other state applicable to an employee. Verification of Worker's Disability Compensation Act Compliance must be completed and submitted within 21 days of contract award and prior to the issuance of the timber sale contract. In addition, if applicable, Notice of Exclusion or Certificate of Insurance must also be submitted.

10. Timber Sale Contract (10/22)

Additional conditions and requirements common to all timber sales are listed on the timber sale contract (R4031) and are available on line at www.michigan.gov/timber. Contact the Unit Manager for additional information or a sample contract. Within 21 days of the date of the award letter, the bidder must sign the contract and provide the required down payment, performance security, and verification of worker's disability compensation. The down payment and performance security shall be in accordance with the provisions of the timber sale contract, in the sums stated in this prospectus. If these actions are not taken, then the Bidder, the Bidder's corporation, and the corporation's principals may not be permitted to bid on State timber sales for a period of 3 months after the first offense, 6 months after the second offense, and 1 year after the third offense. An offense will only be counted against the Bidder for 5 years. In addition, the Bidder certifies that if awarded this contract, the Bidder will complete the timber sale contract in accordance with its terms and any modifications thereof including requirements to purchase, cut, and remove the included timber by the expiration date.

Payment Unit values in the State Forest Timber Sale Contract are calculated based on the advertised value of the Payment Unit as a percentage of the total advertised value of the contract. The advertised value of each Payment Unit is given in the Description of Timber by Payment Unit table on the Timber Sale Information page. For example, if the value of Payment Unit 1 is advertised as \$1,500 and the total Timber Sale value is advertised as \$10,000, the contract price for Payment Unit 1 will be 15% of the total bid price ($\$1,500/\$10,000 * 100$).

11. Disclaimer of Estimates and Bidder's Warranty of Inspection (10/22)

Before submitting this bid, the Bidder is advised and cautioned to inspect the sale area, review the requirements of the sale contract, and take other steps as may be reasonably necessary to ascertain the location, estimated volumes, construction estimates, and operating costs of the proposed sale. Failure to do so will not relieve the Bidder from responsibility for completing the contract.

The Bidder warrants that this bid is submitted solely on the basis of the Bidder's examination and inspection of the quality and quantity of the timber offered for sale and the Bidder's opinion of the value thereof and the costs of recovery. No reliance should be placed on the State of Michigan's estimates of timber quality, quantity or costs of recovery. Bidder further acknowledges that the State of Michigan: (i) expressly disclaims any warranty of fitness of timber for any purpose; (ii) offers this timber as is without any warranty of quality (merchantability) or quantity and (iii) expressly disclaims any warranty as to the quantity or quality of timber sold.

12. Certification and Chain-of-Custody (10/22)

Unless otherwise indicated in the contract under section 7 – Other Conditions of the Sale Specific Conditions & Requirements, the area encompassed by this timber sale is certified to the standards of the Forest Stewardship Council (FSC) - Certificate #SCS-FM/COC-00090N and the Sustainable Forestry Initiative (SFI) - Certificate #NSF-SFIS-5Y031-SF5. Forest products from this sale may be delivered to the mill as "FSC 100% and / or SFI certified" as long as the contractor hauling the forest products is chain-of-custody (COC) certified or covered under a COC certificate from the destination mill. The purchaser is responsible for maintaining COC after leaving the sale area.

13. Good Neighbor Authority (GNA) Requirements (10/22)

If the name of this timber sales contains the acronym GNA, it is authorized by the Good Neighbor Authority (GNA) and covered by various agreements between the U.S. Forest Service and the State. The timber sale occurs on federal land and the following conditions apply:

GNA contracts on US Forest Service land will not be awarded to purchasers on the Federal list of excluded parties. The System for Award Management (SAM) will be checked for active excluded parties prior to award of contract. In addition, the Bidder to whom award is made must complete an Assurance Regarding Felony Conviction or Tax

14. Good Neighbor Authority (GNA) Requirements, con't (10/22)

Bidder certifies, by signing this bid form, that to the best of Bidder's knowledge that the following representations are accurate and complete.

- a. That the Bidder and its principals are not presently debarred, suspended, proposed for debarment, declared ineligible, or voluntary excluded from timber sales (covered transactions) by any Federal department or agency.
- b. That the Bidder and its principals have not within a 3-year period preceding this bid been convicted of or had a civil judgment rendered against them for commission of fraud or a criminal offense in connection with obtaining , attempting to obtain, or performing a public (Federal, State, or local) transaction or contract under a public transaction; violation of Federal or State antitrust statutes or commission of embezzlement, theft, forgery, bribery, falsification or destruction of records, making false statements, or receiving stolen property.
- c. That the Bidder and its principals are not presently indicted for or otherwise criminally or civilly charged by a governmental entity (Federal, State, or local) with commission of any of the offenses enumerated in paragraph b of this certification.
- d. That the Bidder and its principals have not within a 3-year period preceding this bid had one or more public transactions (Federal, State, or local) terminated for breach or default of a timber or forest product contract.

Bidders that cannot certify this requirement, in whole or in part, shall submit an explanation with their bid.

Scott Bowen
Director

TIMBER SALE INFORMATION

Dead Sled Pulp (11-003-25)
T52N, R30W, SEC. 32.
Baraga County (Advertised Price \$44,404.35)

SALE NOTE: Access may be through private or other public land.

A timber sale contract for this lump sum, sealed bid timber sale will be awarded to the responsible bidder offering the highest sealed bid price. All units of volume listed below were estimated using the Inventory Manager computer program and the new Michigan taper model. Bids must be at or above the following advertised price for each product and species:

<u>PRODUCTS & SPECIES</u>	<u>ESTIMATED UNITS*</u>	<u>ADVERTISED PRICE</u>
Sawtimber		
Red Maple	26.1 MBF	\$ 141.00 / MBF
Sugar Maple	2.7 MBF	\$ 271.00 / MBF
Pulpwood		
Basswood	6 Cords	\$ 6.30 / Cord
Mixed Aspen	1,300 Cords	\$ 19.00 / Cord
Mixed Hardwood	873 Cords	\$ 13.90 / Cord
Mixed Spruce	262 Cords	\$ 11.60 / Cord
Paper Birch	33 Cords	\$ 2.45 / Cord

* The total volume is statistically estimated within plus (+) or minus (-) 18.31 percent. There are an estimated 2,541 cords on this timber sale, plus or minus 466 cords at the 95% confidence level. The estimated units are final and not subject to adjustment. Prospective bidders are urged to examine this timber and to make their own estimates of quantity and quality.

BOND AND PAYMENT SCHEDULE:

- A bond in the amount of \$4,440.00 to insure faithful performance of the conditions of the contract will be deposited by the successful bidder within 21 days of the sale award.
- Cutting in any sale or unit without the required advance payment would be considered a trespass.
- Total payment must be paid in advance or according to the following schedule :
 - Ten percent (10%) of the sale value must be paid within 21 days of the sale award.
 - The 10% down payment will be credited towards the first unit cut.
 - Payment for each of the following units must be made before cutting begins in that unit:

PAYMENT UNIT NUMBER	PERCENT OF TOTAL SALE VALUE
01	37.7%
02	34.0%
03	28.3%
- If no cutting takes place, the 10% down payment will not be refunded.
- Operations on the contract issued will terminate on 06/30/2028.

SALE STATISTICS

Volumes were calculated in cubic feet using the Michigan taper model. Cubic foot volume includes all wood inside bark for the product indicated. For display purposes, cubic feet were converted to cords and MBF using a simple conversion factor, e.g. 79 cubic feet per cord and 185 cubic feet per MBF. The cubic foot volumes are precise; the cords and MBF volumes are not. Cubic foot volume cannot be directly converted to cords or boards with precision.

SALE VOLUMES

The total estimated sale volume may not equal the sum of the species/products due to the nature of statistical calculations associated with double sampling methodology.

VOLUME			STATISTICAL RANGE IN CORDS	
TOTAL CUBIC FEET	TOTAL CORDS	PERCENT ERROR	MINIMUM	MAXIMUM
200,741	2,541	18.31%	2,076	3,007

VDU VOLUMES

A VDU is a Volume Determination Unit. Volumes and their associated statistics are calculated at the VDU level and summarized to the sale level. There is often a one to one relationship between a VDU and a Payment Unit, but not always, depending on the cruise design. Refer to the VDU TO PAYMENT UNIT table.

	VOLUME			RANGE IN CORDS	
VDU	TOTAL CUBIC FEET	TOTAL CORDS	PERCENT ERROR	MINIMUM	MAXIMUM
29	200,741	2,541	18.32%	2,076	3,007
TOTAL:	200,741	2,541		2,076	3,007

VDU TO PAYMENT UNIT

When a VDU is associated with more than one Payment Unit (PU), the VDU volumes are assigned to the PU based on acres of the VDU within the PU.

VDU	VDU ACRES	PU	PU ACRES
29	100.7	1	38.0
29	100.7	2	34.2
29	100.7	3	28.5
TOTAL:	302.1		100.7

DESCRIPTION OF TIMBER BY PAYMENT UNIT (PU)

PU	MARKET GROUP	PRODUCT	QUANTITY	UNIT	ACRES	ADVERTISE PRICE
1	Red Maple	Sawtimber	9.8	MBF	38.0	\$16,728.75
	Sugar Maple		1.0	MBF		
	Basswood	Pulpwood	2	Cords		
	Mixed Aspen		490	Cords		
	<i>Quaking Aspen</i>		490	<i>Cords</i>		
	Mixed Hardwood		329	Cords		
	<i>Ironwood</i>		2	<i>Cords</i>		
	<i>Red Maple</i>		239	<i>Cords</i>		
	<i>Sugar Maple</i>		88	<i>Cords</i>		
	Mixed Spruce		99	Cords		
	<i>White Spruce</i>		99	<i>Cords</i>		
	Paper Birch		13	Cords		
2	Red Maple	Sawtimber	8.9	MBF	34.2	\$15,097.05
	Sugar Maple		0.9	MBF		
	Basswood	Pulpwood	2	Cords		
	Mixed Aspen		442	Cords		
	<i>Quaking Aspen</i>		442	<i>Cords</i>		
	Mixed Hardwood		297	Cords		
	<i>Ironwood</i>		2	<i>Cords</i>		
	<i>Red Maple</i>		216	<i>Cords</i>		
	<i>Sugar Maple</i>		79	<i>Cords</i>		
	Mixed Spruce		89	Cords		
	<i>White Spruce</i>		89	<i>Cords</i>		
	Paper Birch		11	Cords		
3	Red Maple	Sawtimber	7.4	MBF	28.5	\$12,578.55
	Sugar Maple		0.8	MBF		
	Basswood	Pulpwood	2	Cords		
	Mixed Aspen		368	Cords		
	<i>Quaking Aspen</i>		368	<i>Cords</i>		
	Mixed Hardwood		247	Cords		
	<i>Ironwood</i>		1	<i>Cords</i>		
	<i>Red Maple</i>		180	<i>Cords</i>		
	<i>Sugar Maple</i>		66	<i>Cords</i>		
	Mixed Spruce		74	Cords		
	<i>White Spruce</i>		74	<i>Cords</i>		
	Paper Birch		9	Cords		
TOTAL:			28.8	MBF		
TOTAL:			2,474	Cords		

Sale Specific Conditions & Requirements

Sale Name: Dead Sled Pulp

Sale Number: 11-003-25 Seq#: 1

1 - Sale Area

1.2 - Boundaries

1.2.1 - Painted Boundaries (9/19)

The Sale Boundary and Payment Unit boundaries are marked and identified by blue and purple paint. Exterior Sale Boundary lines against private property are marked with blue paint. Exterior Sale Boundary lines against state property are marked with purple paint. Interior Payment Unit Boundary lines are marked with purple paint. Purple painted trees designating an interior Payment Unit boundary are only to be cut when all surrounding Payment Units have been paid.

2 - Timber Specifications

2.1 - Included Timber

2.1.2 - Clearcut Unit(s) w/o Unmerchantable Trees (8/11)

Within Payment Unit(s) 1, 2, and 3, cut all trees which meet minimum piece specifications in 2.2 Utilization, except do not cut hemlock, yellow birch, white pine, cedar, black cherry, or red oak. In addition:

- All trees marked with a purple "X" are to be felled and left whole as drumming logs.
- Leave down-and-dead trees that are 12 inches or more at DBH for grouse drumming logs.
- Do not cut any tree species that are 22 inches or more at DBH as they are to be reserved.

2.2 - Utilization

2.2.4 - Skidding Length (12/24)

Skidding of unlimbed tops or lengths over 17 feet is not permissible unless approved by the Unit Manager or his/her representative.

2.2.7 - Uncut Designated Trees (2/04)

Liquidated damages of \$10.00 per tree will be assessed for every marked tree not cut.

2.2.8 - Utilization and Removal (12/24)

All products meeting standards set forth in General Condition and Requirement 2.2 - Utilization must be removed from the Sale Area. All products not meeting standards set forth in General Condition and Requirement 2.2 - Utilization may not be removed from the Sale Area, e.g. tops. This is because the sale is within a winter deer yarding area.

3 - Payments

3.4 - Damaged Timber

3.4.1 - Damaged Timber (12/24)

General Condition and Requirement 3.4 Damaged Timber, defines liquidated damages for undesignated live merchantable trees which are cut or injured. In addition, extreme care should be taken to avoid damage to tree seedlings and saplings. No damage is acceptable to undesignated live merchantable trees. Within the Sale Area, if more than 5% of trees (> 4.5" DBH) within a specified area of the sale are damaged, liquidated damages will be assessed for all trees damaged. Rates will be in accordance with General Condition and Requirement 3.4 Damaged Timber.

4 - Transportation

4.1 - Construction

4.1.1 - Stream Crossings, General (1/25)

All stream crossing structures will be temporary and, therefore, shall be provided by the Purchaser and must be removed upon completion of the sale. All permits for stream crossings will be provided by the DNR for crossings located on state land. The Purchaser will secure any necessary stream crossing permits that may be required on private land.

4.1.3 - Slash and Earthen Piles (8/04)

Piles or windrows of earth along roads and landings that have been widened or constructed shall be leveled. Slash from road maintenance or construction, including stumps, shall be dispersed throughout the sale, chipped, utilized or otherwise removed

from the sale.

4.1.5 - Culverts (5/14)

Roads may require the installation of culverts for cross drainage or at natural drainage-ways. If culverts are needed in these locations, their placement will be specified by the Sale Administrator and they shall be installed prior to hauling. The culverts shall be new, corrugated metal or plastic gauge. Culverts will be a minimum of 12 inches in diameter and 24 feet in length. If culverts are removed, fill shall be removed from wetland soils as specified. Soils shall be maintained and left in a non-erodible condition, with water bars, seed, fertilizer, mulch, and slash installed as directed by the Sale Administrator and as specified in the BMP manual.

4.1.7 - Road Closure (10/11)

All new roads built into the sale must be blocked to vehicle traffic upon completion of the sale. Overgrown roads that are reopened shall be considered new roads. In general, this will require constructing a four (4') foot high berm of stumps and logs covered with earth. Contact the Sale Administrator for specific details of design and placement.

4.2 - Maintenance

4.2.2 - Fill Material (4/07)

To maintain roads, fill material may be needed in areas where "holes" exist or may be expected to develop. This fill material should be placed before trucking begins.

4.2.5 - Two Wheel Drive Condition (2/04)

All existing trail roads on and adjacent to the Sale Area must be passable by two-wheel drive traffic for the duration of the sale.

4.4 - Access

4.4.1 - Private property access (3/11)

Permission for access across private land is the responsibility of the Purchaser. Should the Purchaser desire to cross private land, a copy of the written permission from the private landowner must be given to the Unit Manager within 30 days of the bid opening and prior to the beginning of operations if the Purchaser desires to access the sale on roads where the state does not hold easement.

5 - Operations

5.1 - Notification

5.1.1 - Pre-sale Conference (10/16)

A pre-sale conference between the Purchaser and Sale Administrator is required prior to beginning any operations. The Unit Manager or his/her representative must be contacted at least 10 days in advance to schedule the conference.

5.1.4 - Post-Sale Conference (10/16)

A post-sale conference on site between the Purchaser and sale administrator is required 5 days prior to the completion of active logging operations to determine clean-up and repair of landings, road edges, and the fulfillment of other contract specifications.

5.2 - Conduct of Operations

5.2.1 - Slash

5.2.1.1 - Slash Within Sale Area (9/16)

No trees are to be felled outside the Sale Area, and all slash is to be kept at least 10 feet back from the blue paint line. If sale boundary lines are along a public road or highway, then slash must be removed 50' from these lines per General Condition & Requirement 5.2.1.

5.2.1.11 - Slash for Reforestation (3/21)

To facilitate reforestation, the Sale Area shall be left with slash evenly distributed. Bunched tops within the cutting area shall be broken up and scattered. Stumps shall be cut low to the ground. Processing sites shall not be left with a compacted layer of slash; tops from these sites shall be hauled back into the cut area and scattered.

5.2.2 - Hazard Trees/Snags

5.2.2.1 - Den Trees (10/16)

Obvious hollow and/or den trees shall be protected and left standing unless they are a safety hazard.

5.2.3 - Operating Restrictions

5.2.3.1 - Operating Restrictions (9/11)

Within Payment Unit(s) 1, 2, and 3, unless changed by written agreement, cutting, skidding, and hauling are limited to the period of December 1 to March 31. This restriction is because the sale is located within a deer wintering area.

5.2.3.2 - Operating Restrictions (9/11)

Within Payment Unit(s) 1, 2, and 3, unless changed by written agreement, all cleanup activities must be completed by June 30 for all areas that were harvested during the previous harvest season. This restriction is to allow the harvest area to revegetate before the dry season.

5.2.17 - Timber Mats and Interlocking Composite Mats (5/23)

Some roads or skid trails may require extra protection such as that afforded by timber mats, interlocking composite mats, or another approved system. If available, mats may be borrowed from the DNR. A Timber Sale Contract Amendment will be used to document the Purchaser's use of the DNR's mats. Contact the Sale Administrator regarding availability and pick-up. Timber mats are available from various field offices. Composite mats are only available from the Grayling field office and the Marquette ICC. The Purchaser is responsible for picking up and hauling the mats to and from the site. The composite mats will require DNR staff onsite for installation and removal. Contact the Sale Administrator to schedule at least 30 days before desired install/removal date. All mats must be cleaned prior to drop off. This may include, but is not limited to, power washing and brushing to remove mud and debris. A charge of \$700.00 per timber mat and \$2,000.00 per composite mat will be assessed for all damaged or non-returned mats. Damage for the crane/timber mats is defined as three or more broken cants. Damage for the composite mats is defined as cracked or broken mats.

5.2.30 - Landing/Road Topsoil Protection (1/25)

Topsoil must be removed, stockpiled, and saved. Upon completion of the timber sale, soil must be evenly distributed back over the area for revegetation.

5.2.32 - Decking/Landing Restoration (9/13)

All decking and landing areas must have the surface area restored to a condition equal to or better than before. This is to ensure the proper regeneration of the stand. Wood debris, chips and "cookies" from trimmings must be removed or scattered away from landing and loading areas and may not be windrowed on the edge.

5.2.38 - No Decking Against Live Trees (2/04)

Cut products may not be decked against unmarked or designated leave trees.

5.4 - Soil Protection

5.4.1 - Rutting Restriction, General (7/16)

Operations are to cease immediately if equipment and weather conditions result in rutting of roads and/or skid trails which is 12 inches or greater in depth and 50 feet in length. The Unit Manager or his/her representative may restrict hauling and/or skidding if ruts exceed the specified depth. With the Unit Manager or his/her representative's approval, the Purchaser may return to the area when the risk of rutting has decreased.

5.8 - Protection of Endangered Species

5.8.5 - Protection of Raptor Nests (3/13)

All trees with raptor nests will be protected if found during harvesting operations. Notification will be made to the Unit Manager or his/her representative who will notify the Wildlife Biologist so an onsite evaluation and recommendation can be made, if necessary.

**TIMBER SALE MAP**

This information provided by authority of Part 525, 1994 PA 451, as amended.

Sale Number

11-003-25

Date

04/18/2025

Forest Management Unit

Baraga Mgt Unit

County

Baraga

Mapped By: Hansen

Cruised By: Dorvinen, Hansen

Scale

1:15,840

Page

1

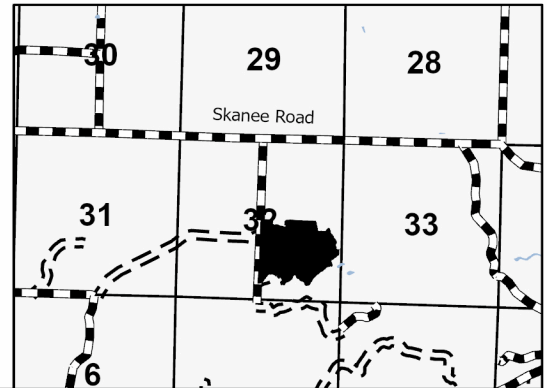
Of

1Township
52NRange
30WSection(s) and
Subdivision(s) Sec. 32 SESW,SE;**Cover Type**

A = Aspen	J = Jack Pine	O = Oak	U = Upland Brush
B = Paper Birch	K = Rock	P = Lowland Poplar	UM = Upland Mix Forest
C = Cedar	L = Lowland Brush	Q = Mixed Swamp Conifer	V = Bog or Marsh
D = Treed Bog	LM = Lowland Mix Forest	R = Red Pine	W = White Pine
E = Swamp Hardwoods	M = Maple, Beech, Birch	S = Black Spruce	X = Non Stocked
F = Spruce/Fir	MC = Mixed Conifer	T = Tamarack	Y = Sand
G = Grass	MD = Mixed Deciduous	Z = Water	
H = Hemlock	N = Marsh		

Density

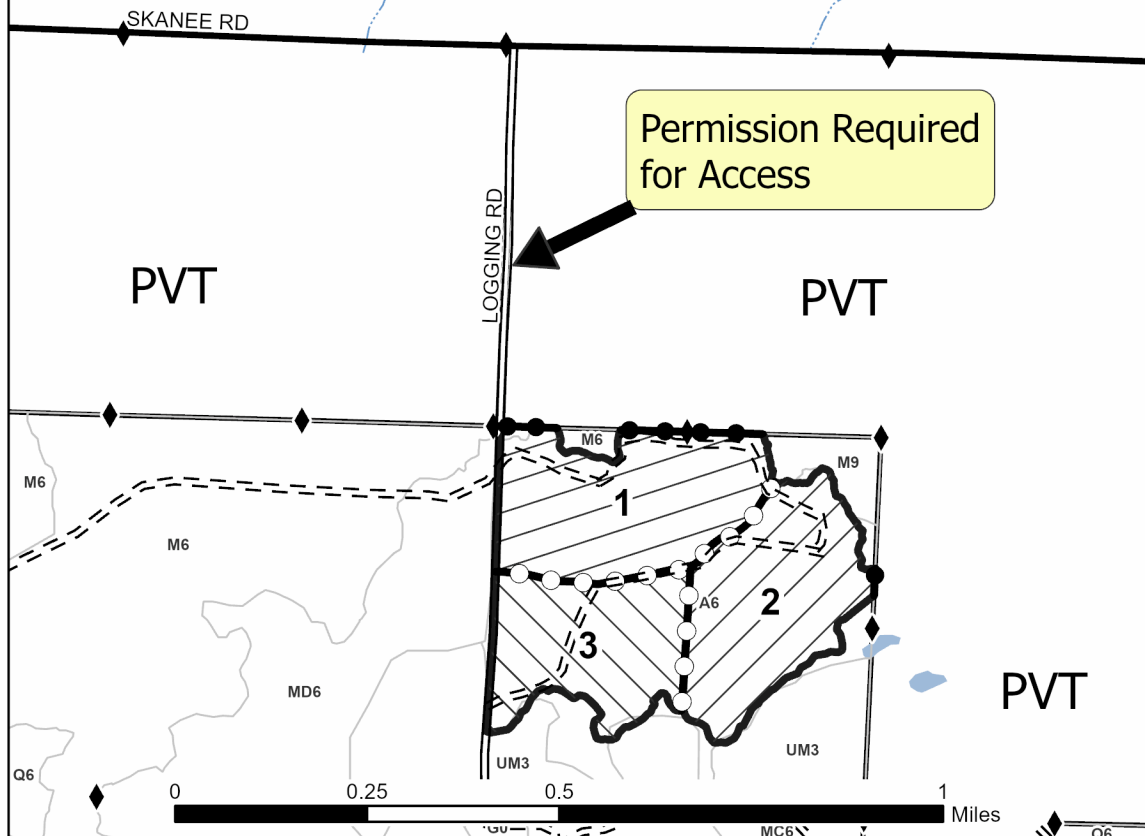
0 = Non Stocked	5 = Pole Timber Medium
1 = Seedling Sapling Poor	6 = Pole Timber Well
2 = Seedling Sapling Medium	7 = Saw Timber Poor
3 = Seedling Sapling Well	8 = Saw Timber Medium
4 = Pole Timber Poor	9 = Saw Timber Well

Locator Map 1:75,000**Dead Sled Pulp**

100.7 Acres

Baraga County, Compartment 2

UNIT	1	2	3	TOTALS
ACRES	38	34.2	28.5	100.7
Sawlogs MBF				
Red Maple	9.8	8.9	7.4	26.1
Sugar Maple	1	0.9	0.8	2.7
TOTAL	10.8	9.8	8.2	28.8
Pulpwood Cords				
Mixed Aspen	490	442	368	1300
Mixed Hdwd	329	297	247	873
Mixed Spruce	99	89	74	262
Paper Birch	13	11	9	33
Basswood	2	2	2	6
TOTAL	931	839	698	2468

**Legend**

- Against State (Purple)
- Private Line (Blue)
- Payment Unit (Purple)
- Stand
- Intermittent Stream
- Survey Grade Corner
- Administrative Access
- Paved Road
- Dirt Road

Use QR Code to
open Map in App

TIMBER SALE INFORMATION

Mike's Mix (11-010-25)

T48N, R32W, SEC. 4.

Baraga County (Advertised Price \$58,737.95)

A timber sale contract for this lump sum, sealed bid timber sale will be awarded to the responsible bidder offering the highest sealed bid price. All units of volume listed below were estimated using the Inventory Manager computer program and the new Michigan taper model. Bids must be at or above the following advertised price for each product and species:

<u>PRODUCTS & SPECIES</u>	<u>ESTIMATED UNITS*</u>		<u>ADVERTISED PRICE</u>	
Sawtimber				
Paper Birch	1.2	MBF	\$	48.00 / MBF
Pulpwood				
Balsam Fir	44	Cords	\$	4.90 / Cord
Basswood	36	Cords	\$	6.30 / Cord
Mixed Aspen	166	Cords	\$	19.00 / Cord
Mixed Hardwood	194	Cords	\$	13.90 / Cord
Mixed Spruce	166	Cords	\$	11.60 / Cord
Paper Birch	85	Cords	\$	2.45 / Cord
Red Pine	670	Cords	\$	73.85 / Cord
Tamarack	86	Cords	\$	9.00 / Cord

* The total volume is statistically estimated within plus (+) or minus (-) 18.84 percent. There are an estimated 1,448 cords on this timber sale, plus or minus 273 cords at the 95% confidence level. The estimated units are final and not subject to adjustment. Prospective bidders are urged to examine this timber and to make their own estimates of quantity and quality.

BOND AND PAYMENT SCHEDULE:

- A bond in the amount of \$5,874.00 to insure faithful performance of the conditions of the contract will be deposited by the successful bidder within 21 days of the sale award.
- Cutting in any sale or unit without the required advance payment would be considered a trespass.
- Total payment must be paid in advance or according to the following schedule :
 - Ten percent (10%) of the sale value must be paid within 21 days of the sale award.
 - The 10% down payment will be credited towards the first unit cut.
 - Payment for each of the following units must be made before cutting begins in that unit:

PAYMENT UNIT NUMBER	PERCENT OF TOTAL SALE VALUE
01	84.2%
02	15.8%
- If no cutting takes place, the 10% down payment will not be refunded.
- Operations on the contract issued will terminate on 06/30/2028.

SALE STATISTICS

Volumes were calculated in cubic feet using the Michigan taper model. Cubic foot volume includes all wood inside bark for the product indicated. For display purposes, cubic feet were converted to cords and MBF using a simple conversion factor, e.g. 79 cubic feet per cord and 185 cubic feet per MBF. The cubic foot volumes are precise; the cords and MBF volumes are not. Cubic foot volume cannot be directly converted to cords or boards with precision.

SALE VOLUMES

The total estimated sale volume may not equal the sum of the species/products due to the nature of statistical calculations associated with double sampling methodology.

VOLUME		STATISTICAL RANGE IN CORDS		
TOTAL CUBIC FEET	TOTAL CORDS	PERCENT ERROR	MINIMUM	MAXIMUM
114,389	1,448	18.84%	1,175	1,721

VDU VOLUMES

A VDU is a Volume Determination Unit. Volumes and their associated statistics are calculated at the VDU level and summarized to the sale level. There is often a one to one relationship between a VDU and a Payment Unit, but not always, depending on the cruise design. Refer to the VDU TO PAYMENT UNIT table.

	VOLUME			RANGE IN CORDS	
VDU	TOTAL CUBIC FEET	TOTAL CORDS	PERCENT ERROR	MINIMUM	MAXIMUM
40	52,892	670	32.89%	449	890
57	37,712	477	27.97%	344	611
92	23,785	301	34.05%	199	404
TOTAL:	114,389	1,448		992	1,904

VDU TO PAYMENT UNIT

When a VDU is associated with more than one Payment Unit (PU), the VDU volumes are assigned to the PU based on acres of the VDU within the PU.

VDU	VDU ACRES	PU	PU ACRES
40	33.2	1	33.2
57	24.4	2	24.4
92	28.0	2	28.0
TOTAL:	85.6		85.6

DESCRIPTION OF TIMBER BY PAYMENT UNIT (PU)

PU	MARKET GROUP	PRODUCT	QUANTITY	UNIT	ACRES	ADVERTISE PRICE
1	Red Pine	Pulpwood	670	Cords	33.2	\$49,479.50
2	Paper Birch	Sawtimber	1.2	MBF	52.4	\$9,258.45
	Balsam Fir	Pulpwood	44	Cords		
	Basswood		36	Cords		
	Mixed Aspen		166	Cords		
	<i>Quaking Aspen</i>		166	<i>Cords</i>		
	Mixed Hardwood		194	Cords		
	<i>Black Cherry</i>		13	<i>Cords</i>		
	<i>Red Maple</i>		50	<i>Cords</i>		
	<i>Sugar Maple</i>		127	<i>Cords</i>		
	<i>Yellow Birch</i>		4	<i>Cords</i>		
	Mixed Spruce		166	Cords		
	<i>Black Spruce</i>		129	<i>Cords</i>		
	<i>White Spruce</i>		37	<i>Cords</i>		
	Paper Birch		85	Cords		
	Tamarack		86	Cords		
TOTAL:			1.2	MBF		
TOTAL:			1,447	Cords		

Sale Specific Conditions & Requirements

Sale Name: Mike's Mix

Sale Number: 11-010-25 Seq#: 1

1 - Sale Area

1.2 - Boundaries

1.2.1 - Painted Boundaries (9/19)

The sale boundary and Payment Unit boundaries are marked and identified by blue and red paint. Exterior sale boundary lines against private property are marked with blue paint. Exterior sale boundary lines against state are marked with red paint.

2 - Timber Specifications

2.1 - Included Timber

2.1.2 - Clearcut Unit(s) w/o Unmerchantable Trees (8/11)

Within Payment Unit(s) 2, cut all trees which meet minimum piece specifications in 2.2 Utilization, except do not cut hemlock, red pine, white pine, cedar, and oak (if present).

Within Payment Unit(s) 1, cut all unmarked red pine, regardless of merchantability.

2.2 - Utilization

2.2.3 - Stump Heights (12/24)

Stump heights within the Sale Area shall not exceed 12 inches for trees greater than 10 inches at DBH and four (4) inches for trees smaller than 10 inches at DBH. A written waiver of this requirement may be obtained if wet summer weather makes winter logging necessary.

2.2.4 - Skidding Length (12/24)

Skidding of lengths over 17 feet is permissible as long as the Sale Administrator approves the method and machinery used. If at any point damage exceeds specification 3.4.1, all of the remaining wood must be skid in lengths less than 17 feet.

2.2.7 - Uncut Designated Trees (2/04)

Liquidated damages of \$10.00 per tree will be assessed for every marked tree not cut.

2.2.11 - Chipping Restriction (9/14)

If chipping occurs on this sale, then no woody debris present on the ground at the start of the sale may be chipped. In addition, brush or chips may not be stored or stockpiled on-site for more than 30 days.

3 - Payments

3.4 - Damaged Timber

3.4.1 - Damaged Timber (12/24)

General Condition and Requirement 3.4 Damaged Timber, defines liquidated damages for undesignated live merchantable trees which are cut or injured. In addition, extreme care should be taken to avoid damage to tree seedlings and saplings in Payment Unit 1.

No damage is acceptable to undesignated live merchantable trees. Within the Sale Area, if more than 5 % of trees (> 4.5" DBH) within a specified area of the sale are damaged, liquidated damages will be assessed for all trees damaged. Rates will be in accordance with General Condition and Requirement 3.4 Damaged Timber.

4 - Transportation

4.1 - Construction

4.1.1 - Stream Crossings, General (1/25)

All stream crossing structures will be temporary and, therefore, shall be provided by the Purchaser and must be removed upon completion of the sale. All permits for stream crossings will be provided by the DNR for crossings on state owned land. Please notify the DNR 90 days prior to working on any crossing that requires a permit. The Purchaser will secure any necessary permits that may be required for crossings located on private property.

4.1.3 - Slash and Earthen Piles (8/04)

Piles or windrows of earth along roads and landings that have been widened or constructed shall be leveled. Slash from road maintenance or construction, including stumps, shall be dispersed throughout the sale, or chipped, utilized or otherwise removed from the sale.

4.1.4 - Timber Removed for Construction (3/23)

Trees cut or damaged in the process of pre-approved road, landing, or skid trail construction will be decked in an area separate from other Designated Timber and not removed until measured by the Sale Administrator. Payment will be made at contract prices or average prices, if not on the contract.

4.1.5 - Culverts (5/14)

Roads may require the installation of culverts for cross drainage or at natural drainage-ways. If culverts are needed in these locations, their placement will be specified by the Sale Administrator, and they shall be installed prior to hauling. The culverts shall be new, corrugated metal or plastic gauge. Culverts will be a minimum of 12 inches in diameter and 24 feet in length. If culverts are removed, fill shall be removed from wetland soils as specified. Soils shall be maintained and left in a non-erodible condition, with water bars, seed, fertilizer, mulch, and slash installed as directed by the Sale Administrator and as specified in the BMP manual.

4.1.6 - Road Construction (4/24)

Construction of new roads or improvements of existing roads shall be done in such a way as to minimize the environmental and visual impacts. Merchantable trees shall be cut and utilized unless otherwise directed. Non-merchantable trees shall be severed and laid flat on the ground. Slash shall be scattered, and not left in windrows and kept a minimum of 10 feet back from the road edge, or be chipped, utilized or otherwise removed from the sale. Stumps shall be set upright, not left on edge, and be moved at least 10 feet away from the road edge. Disturbed soil shall be feathered into the woods and not left in berms or windrows.

4.1.7 - Road Closure (10/11)

All new roads built into the sale must be blocked to vehicle traffic upon completion of the sale. Overgrown roads that are reopened shall be considered new roads. In general, this will require constructing a four (4') foot high berm of stumps and logs covered with earth. Contact the Sale Administrator for specific details of design and placement.

4.1.8 - Road Work (1) (8/07)

The following road work is required if sale is logged with snow on the ground. The Purchaser will plow the access road into the sale, such that there are pull-offs and/or turn outs sufficient for a passenger vehicle pulling a trailer to pull off the road to allow passage of other vehicles. These pull-offs shall be along the road at a distance of no greater than a quarter of a mile.

4.2 - Maintenance

4.2.2 - Fill Material (4/07)

To maintain roads, fill material may be needed in areas where "holes" exist or may be expected to develop. This fill material should be placed before trucking begins. Contact the Sale Administrator regarding the availability of onsite sand or gravel from adjacent State-owned lands.

4.2.4 - Grading (10/16)

For completion of the sale, state forest roads must be graded. In general, this will require a road grader or bulldozer to shape up the roads after forest products have been hauled off site. This includes cleaning of drainage areas, grading, crowning and filling with gravel, if necessary. The grading equipment to be used must be approved by the Unit Manager or his/her representative.

5 - Operations

5.1 - Notification

5.1.1 - Pre-sale Conference (10/16)

A pre-sale conference between the Purchaser and Sale Administrator is required prior to beginning any operations, to determine landing and road locations. The Unit Manager or his/her representative must be contacted at least 10 days in advance to schedule the conference.

5.1.4 - Post-Sale Conference (10/16)

A post-sale conference on site between the Purchaser and sale administrator is required 5 days prior to the completion of

active logging operations to determine clean-up and repair of landings, road edges, and the fulfillment of other contract specifications.

5.2 - Conduct of Operations

5.2.1 - Slash

5.2.1.1 - Slash Within Sale Area (9/16)

No trees are to be felled outside the Sale Area, and all slash is to be kept at least 10 feet back from the red and blue paint line. If sale boundary lines are along a public road or highway, then slash must be removed 50' from these lines per General Condition & Requirement 5.2.1.

5.2.1.11 - Slash for Reforestation (3/21)

To facilitate reforestation, the Sale Area shall be left with slash evenly distributed. Bunched tops within the cutting area shall be broken up and scattered. Processing sites shall not be left with a compacted layer of slash; tops from these sites shall be hauled back into the cut area and scattered.

5.2.2 - Hazard Trees/Snags

5.2.2.1 - Den Trees (10/16)

Obvious hollow and/or den trees shall be protected and left standing unless they are a safety hazard.

5.2.3 - Operating Restrictions

5.2.3.2 - Operating Restrictions (9/11)

Within Payment Unit(s) unless changed by written agreement, all clean-up activities must be completed by June 15 for all areas that were harvested during the previous harvest season. This restriction is to allow the clean-up areas to revegetate before the dry season.

5.2.3.6 - Bark Beetle Restriction (1/25)

In the event drought creates a high risk of pine bark beetle infestation, pine is not to be cut during the period March 1 through July 1, unless all portions of trees greater than two (2) inches in diameter are removed from the Sale Area, reduced to chips, or treated to the satisfaction of the Unit Manager or his/her representative, within 15 days of being severed from the stump. Pine log decks, pulpwood piles and treetops that are piled for chipping in the fall or winter within a 1/4 mile of susceptible sites must be removed before March 15. Residual slash must not be placed in piles or rows and must be spread over the site for quick drying. The Department of Natural Resources will exercise this specification if the risk of damage warrants.

5.2.17 - Timber Mats and Interlocking Composite Mats (5/23)

Some roads or skid trails may require extra protection such as that afforded by timber mats, interlocking composite mats, or another approved system. If available, mats may be borrowed from the DNR. A Timber Sale Contract Amendment will be used to document the Purchaser's use of the DNR's mats. Contact the Sale Administrator regarding availability and pick-up. Timber mats are available from various field offices. Composite mats are only available from the Grayling field office and the Marquette ICC. The Purchaser is responsible for picking up and hauling the mats to and from the site. The composite mats will require DNR staff onsite for installation and removal. Contact the Sale Administrator to schedule at least 30 days before desired install/removal date. All mats must be cleaned prior to drop off. This may include, but is not limited to, power washing and brushing to remove mud and debris. A charge of \$700.00 per timber mat and \$2,000.00 per composite mat will be assessed for all damaged or non-returned mats. Damage for the crane/timber mats is defined as three or more broken cants. Damage for the composite mats is defined as cracked or broken mats.

5.2.32 - Decking/Landing Restoration (9/13)

All decking and landing areas must have the surface area restored to a condition equal to or better than before. This is to ensure the proper regeneration of the stand. Wood debris, chips and "cookies" from trimmings must be removed or scattered away from landing and loading areas and may not be windrowed on the edge.

5.2.38 - No Decking Against Live Trees (2/04)

Cut products may not be decked against unmarked or designated leave trees.

5.4 - Soil Protection

5.4.1 - Rutting Restriction, General (7/16)

Operations are to cease immediately if equipment and weather conditions result in rutting of roads and/or skid trails which is 12 inches or greater in depth and 50 feet in length. The Unit Manager or his/her representative may restrict hauling and/or skidding if ruts exceed the specified depth. With the Unit Manager or his/her representative's approval, the Purchaser may return to the area when the risk of rutting has decreased.

5.4.2 - Skid Trails (2/04)

Skid trails up and down slopes should be avoided. If, however, this is unavoidable, these trails will be left in a non-erodible condition using water bars, logs, and slash. Placing of slash on these skid trails while logging is ongoing may alleviate need for any further action. At the direction of the Sale Administrator, seed, fertilizer, and mulch may also be required.

5.8 - Protection of Endangered Species

5.8.5 - Protection of Raptor Nests (3/13)

All trees with raptor nests will be protected if found during harvesting operations. Notification will be made to the Unit Manager or his/her representative who will notify the Wildlife Biologist so an onsite evaluation and recommendation can be made, if necessary.

6 - Safety and Fire Prevention

6.2 - Signing

6.2.1 - Road Posting (10/20)

The Purchaser is responsible for posting and maintaining caution signs on Herman - Nestoria Road prior to beginning operations. The road must be posted at appropriate distances from the Sale Area to warn of logging activity and truck traffic. Signs must be removed when harvest operations are suspended or completed. The Purchaser will provide these signs.

**TIMBER SALE MAP**

This information provided by authority of Part 525, 1994 PA 451, as amended.

Sale Number

11-010-25

Date

04/15/2025

Forest Management Unit

Baraga Mgt Unit

County

Baraga

Mapped By: Ryan Mattila

Cruised By: Baraga Staff

Scale

1:15,840

Page

1

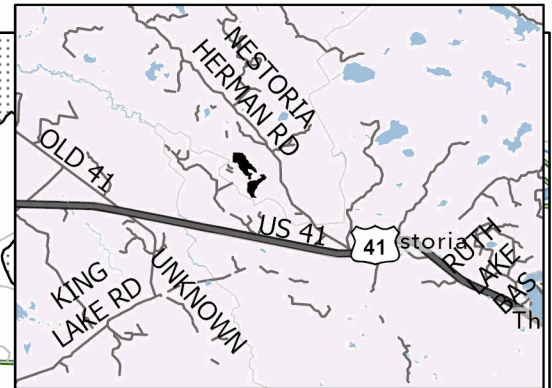
Of

1Township
48NRange
32WSection(s) and
Subdivision(s) Sec. 4 NW,SWNE,E1/2SW;**Cover Type**

A = Aspen	J = Jack Pine	O = Oak	U = Upland Brush
B = Paper Birch	K = Rock	P = Lowland Poplar	UM = Upland Mix Forest
C = Cedar	L = Lowland Brush	Q = Mixed Swamp Conifer	V = Bog or Marsh
D = Treed Bog	LM = Lowland Mix Forest	R = Red Pine	W = White Pine
E = Swamp Hardwoods	M = Maple, Beech, Birch	S = Black Spruce	X = Non Stocked
F = Spruce/Fir	MC = Mixed Conifer	T = Tamarack	Y = Sand
G = Grass	MD = Mixed Deciduous	Z = Water	
H = Hemlock	N = Marsh		

Density

0 = Non Stocked	5 = Pole Timber Medium
1 = Seedling Sapling Poor	6 = Pole Timber Well
2 = Seedling Sapling Medium	7 = Saw Timber Poor
3 = Seedling Sapling Well	8 = Saw Timber Medium
4 = Pole Timber Poor	9 = Saw Timber Well

Locator Map 1:200,000**Legend**

	Payment Unit
	Private Line (Blue)
	Powerline
	Recreational Trails
	Survey Grade Corner
	Highway
	County Road
	Forest Road
	Private Road

Mikes Mix

Baraga County, Compartment 16

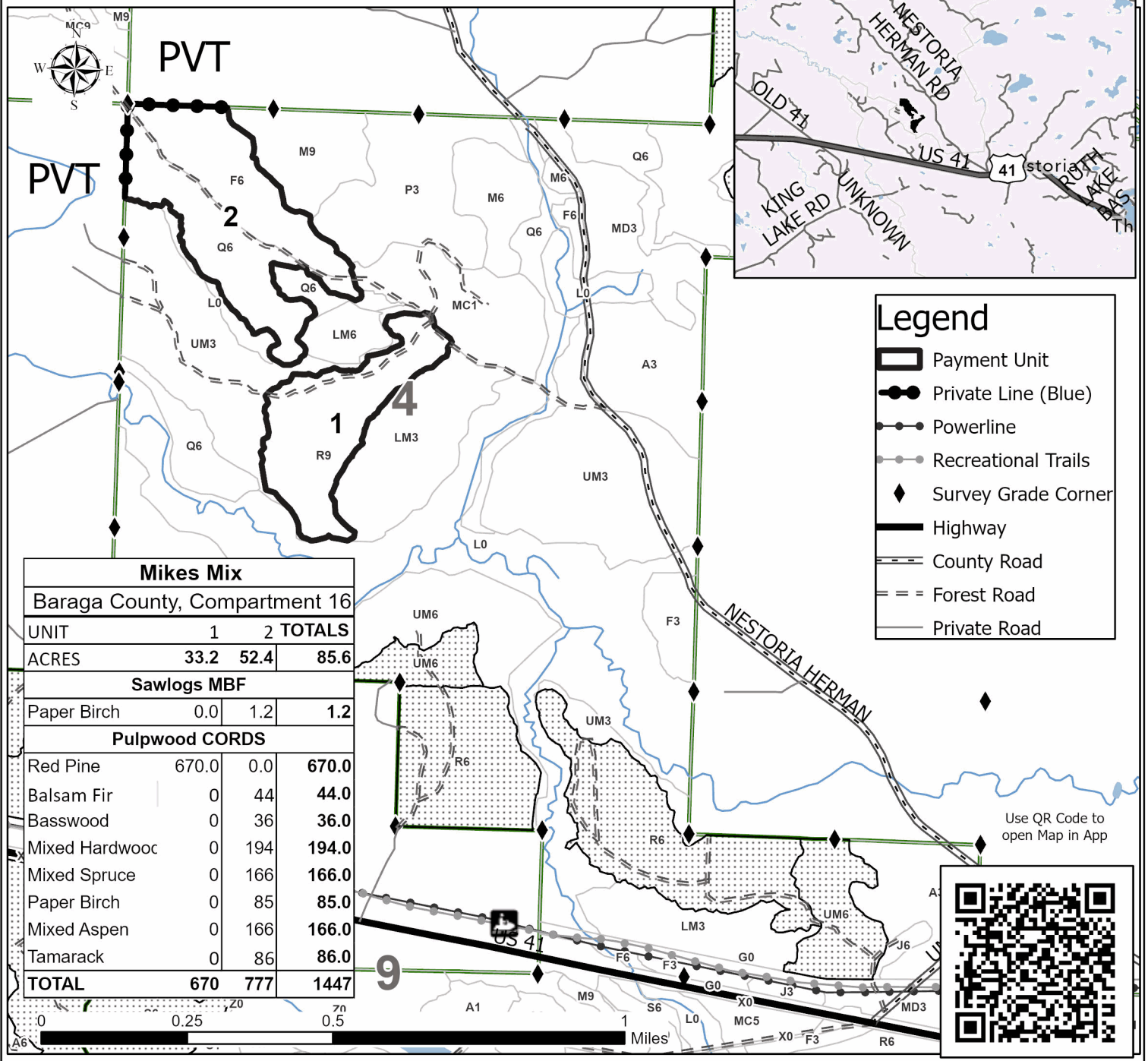
UNIT	1	2	TOTALS
ACRES	33.2	52.4	85.6

Sawlogs MBF

Paper Birch	0.0	1.2	1.2
-------------	-----	-----	-----

Pulpwood CORDS

Red Pine	670.0	0.0	670.0
Balsam Fir	0	44	44.0
Basswood	0	36	36.0
Mixed Hardwood	0	194	194.0
Mixed Spruce	0	166	166.0
Paper Birch	0	85	85.0
Mixed Aspen	0	166	166.0
Tamarack	0	86	86.0
TOTAL	670	777	1447



TIMBER SALE INFORMATION

GNA2 Hare Ball (11-810-25)

T47N, R38W, SEC. 3; T48N, R38W, SEC. 21; T48N, R38W, SEC. 26; T48N, R38W, SEC. 27; T48N, R38W, SEC. 28; T48N, R38W, SEC. 29; T48N, R38W, SEC. 33; T48N, R38W, SEC. 34; T48N, R38W, SEC. 35.

SALE NOTE: Access may be through private land.

A timber sale contract for this lump sum, sealed bid timber sale will be awarded to the responsible bidder offering the highest sealed bid price. All units of volume listed below were estimated using the Inventory Manager computer program and the new Michigan taper model. Bids must be at or above the following advertised price for each product and species:

<u>PRODUCTS & SPECIES</u>	<u>ESTIMATED UNITS*</u>	<u>ADVERTISED PRICE</u>
Sawtimber		
Paper Birch	3.2 MBF	\$ 43.00 / MBF
Red Maple	22.7 MBF	\$ 128.00 / MBF
Pulpwood		
Balsam Fir	378 Cords	\$ 4.45 / Cord
Balsam Poplar	113 Cords	\$ 17.20 / Cord
Mixed Aspen	11,698 Cords	\$ 17.20 / Cord
Mixed Hardwood	3,948 Cords	\$ 12.60 / Cord
Mixed Spruce	341 Cords	\$ 10.55 / Cord

* The total volume is statistically estimated within plus (+) or minus (-) 6.61 percent. There are an estimated 16,540 cords on this timber sale, plus or minus 1,095 cords at the 95% confidence level. The estimated units are final and not subject to adjustment. Prospective bidders are urged to examine this timber and to make their own estimates of quantity and quality.

BOND AND PAYMENT SCHEDULE:

1. A bond in the amount of \$13,061.00 to insure faithful performance of the conditions of the contract will be deposited by the successful bidder within 21 days of the sale award.
2. Cutting in any sale or unit without the required advance payment would be considered a trespass.
3. Total payment must be paid in advance or according to the following schedule:
 - (a) Ten percent (10%) of the sale value must be paid within 21 days of the sale award.
 - (b) The 10% down payment will be credited towards the first unit cut.
 - (c) Payment for each of the following units must be made before cutting begins in that unit:

<u>PAYMENT UNIT NUMBER</u>	<u>PERCENT OF TOTAL SALE VALUE</u>
01	7.8%
02	5.1%
03	3.5%
04	6.4%
05	5.5%
06	6.3%
07	2.7%
08	8.2%
09	4.0%
10	11.3%
11	6.9%
12	7.4%
13	10.7%
14	11.3%
15	2.9%

4. If no cutting takes place, the 10% down payment will not be refunded.
5. Operations on the contract issued will terminate on 06/30/2029.

SALE STATISTICS

Volumes were calculated in cubic feet using the Michigan taper model. Cubic foot volume includes all wood inside bark for the product indicated. For display purposes, cubic feet were converted to cords and MBF using a simple conversion factor, e.g. 79 cubic feet per cord and 185 cubic feet per MBF. The cubic foot volumes are precise; the cords and MBF volumes are not. Cubic foot volume cannot be directly converted to cords or boards with precision.

SALE VOLUMES

The total estimated sale volume may not equal the sum of the species/products due to the nature of statistical calculations associated with double sampling methodology.

VOLUME			STATISTICAL RANGE IN CORDS	
TOTAL CUBIC FEET	TOTAL CORDS	PERCENT ERROR	MINIMUM	MAXIMUM
1,306,624	16,540	6.61%	15,445	17,634

VDU VOLUMES

A VDU is a Volume Determination Unit. Volumes and their associated statistics are calculated at the VDU level and summarized to the sale level. There is often a one to one relationship between a VDU and a Payment Unit, but not always, depending on the cruise design. Refer to the VDU TO PAYMENT UNIT table.

	VOLUME			RANGE IN CORDS	
VDU	TOTAL CUBIC FEET	TOTAL CORDS	PERCENT ERROR	MINIMUM	MAXIMUM
2	167,616	2,122	20.98%	1,677	2,567
6	29,143	369	33.78%	244	494
16	134,857	1,707	18.68%	1,388	2,026
18	271,610	3,438	16.52%	2,870	4,006
19	197,747	2,503	19.62%	2,012	2,994
21	85,475	1,082	18.31%	884	1,280
22	151,247	1,915	18.04%	1,569	2,260
23	182,941	2,316	15.21%	1,964	2,668
26	77,031	975	23.98%	741	1,209
66	8,956	113	68.41%	36	191
TOTAL:	1,306,624	16,540		13,385	19,694

VDU TO PAYMENT UNIT

When a VDU is associated with more than one Payment Unit (PU), the VDU volumes are assigned to the PU based on acres of the VDU within the PU.

VDU	VDU ACRES	PU	PU ACRES
2	64.4	1	38.8
2	64.4	2	25.6
6	11.3	15	11.3
16	66.4	3	23.3
16	66.4	4	43.1
18	98.3	13	47.9
18	98.3	14	50.4
19	75.5	9	19.5
19	75.5	10	56.0
21	40.6	6	40.6
22	87.0	7	21.6
22	87.0	8	65.4
23	94.1	11	45.3
23	94.1	12	48.8
26	40.6	5	40.6
66	5.2	15	5.2
TOTAL:	1,069.1		583.4

DESCRIPTION OF TIMBER BY PAYMENT UNIT (PU)

PU	MARKET GROUP	PRODUCT	QUANTITY	UNIT	ACRES	ADVERTISE PRICE
1	Red Maple	Sawtimber	11.1	MBF	38.8	\$20,271.10
	Balsam Fir	Pulpwood	22	Cords		
	Mixed Aspen		712	Cords		
	<i>B. T. Aspen</i>		146	<i>Cords</i>		
	<i>Quaking Aspen</i>		566	<i>Cords</i>		
	Mixed Hardwood		513	Cords		
	<i>Black Ash</i>		5	<i>Cords</i>		
	<i>Paper Birch</i>		54	<i>Cords</i>		
	<i>Red Maple</i>		434	<i>Cords</i>		
	<i>Sugar Maple</i>		9	<i>Cords</i>		
	<i>Yellow Birch</i>		11	<i>Cords</i>		
	Mixed Spruce		4	Cords		
	<i>White Spruce</i>		4	<i>Cords</i>		
2	Red Maple	Sawtimber	7.3	MBF	25.6	\$13,405.40
	Balsam Fir	Pulpwood	15	Cords		
	Mixed Aspen		471	Cords		
	<i>B. T. Aspen</i>		97	<i>Cords</i>		
	<i>Quaking Aspen</i>		374	<i>Cords</i>		
	Mixed Hardwood		339	Cords		
	<i>Black Ash</i>		4	<i>Cords</i>		
	<i>Paper Birch</i>		35	<i>Cords</i>		
	<i>Red Maple</i>		286	<i>Cords</i>		
	<i>Sugar Maple</i>		6	<i>Cords</i>		
	<i>Yellow Birch</i>		8	<i>Cords</i>		
	Mixed Spruce		3	Cords		
	<i>White Spruce</i>		3	<i>Cords</i>		
3	Paper Birch	Sawtimber	1.1	MBF	23.3	\$9,035.05
	Red Maple		1.1	MBF		
	Mixed Aspen	Pulpwood	302	Cords		
	<i>B. T. Aspen</i>		7	<i>Cords</i>		
	<i>Quaking Aspen</i>		295	<i>Cords</i>		
	Mixed Hardwood		279	Cords		
	<i>Paper Birch</i>		60	<i>Cords</i>		
	<i>Red Maple</i>		214	<i>Cords</i>		
	<i>White Ash</i>		5	<i>Cords</i>		
	Mixed Spruce		13	Cords		
	<i>Black Spruce</i>		2	<i>Cords</i>		
	<i>White Spruce</i>		11	<i>Cords</i>		
4	Paper Birch	Sawtimber	2.1	MBF	43.1	\$16,692.05
	Red Maple		2.0	MBF		
	Mixed Aspen	Pulpwood	557	Cords		
	<i>B. T. Aspen</i>		12	<i>Cords</i>		
	<i>Quaking Aspen</i>		545	<i>Cords</i>		
	Mixed Hardwood		516	Cords		
	<i>Paper Birch</i>		110	<i>Cords</i>		
	<i>Red Maple</i>		396	<i>Cords</i>		
	<i>White Ash</i>		10	<i>Cords</i>		
	Mixed Spruce		25	Cords		
	<i>Black Spruce</i>		5	<i>Cords</i>		
	<i>White Spruce</i>		20	<i>Cords</i>		
5	Red Maple	Sawtimber	1.2	MBF	40.6	\$14,255.00
	Balsam Fir	Pulpwood	18	Cords		
	Mixed Aspen		443	Cords		
	<i>B. T. Aspen</i>		44	<i>Cords</i>		
	<i>Quaking Aspen</i>		399	<i>Cords</i>		
	Mixed Hardwood		493	Cords		

DESCRIPTION OF TIMBER BY PAYMENT UNIT (PU), CON'T

PU	MARKET GROUP	PRODUCT	QUANTITY	UNIT	ACRES	ADVERTISE PRICE
5 con't	<i>Basswood</i>	<i>Pulpwood</i>	22	<i>Cords</i>		
	<i>Paper Birch</i>		98	<i>Cords</i>		
	<i>Red Maple</i>		366	<i>Cords</i>		
	<i>Sugar Maple</i>		7	<i>Cords</i>		
	Mixed Spruce		18	Cords		
	<i>White Spruce</i>		18	<i>Cords</i>		
6	Balsam Fir	Pulpwood	26	Cords	40.6	\$16,386.65
	Mixed Aspen		654	Cords		
	<i>B. T. Aspen</i>		17	<i>Cords</i>		
	<i>Quaking Aspen</i>		637	<i>Cords</i>		
	Mixed Hardwood		381	Cords		
	<i>Red Maple</i>		381	<i>Cords</i>		
	Mixed Spruce		21	Cords		
	<i>White Spruce</i>		21	<i>Cords</i>		
7	Balsam Fir	Pulpwood	20	Cords	21.6	\$7,111.30
	Balsam Poplar		3	Cords		
	Mixed Aspen		279	Cords		
	<i>B. T. Aspen</i>		47	<i>Cords</i>		
	<i>Quaking Aspen</i>		232	<i>Cords</i>		
	Mixed Hardwood		164	Cords		
	<i>Paper Birch</i>		11	<i>Cords</i>		
	<i>Red Maple</i>		153	<i>Cords</i>		
	Mixed Spruce		10	Cords		
	<i>White Spruce</i>		10	<i>Cords</i>		
8	Balsam Fir	Pulpwood	59	Cords	65.4	\$21,524.10
	Balsam Poplar		11	Cords		
	Mixed Aspen		844	Cords		
	<i>B. T. Aspen</i>		141	<i>Cords</i>		
	<i>Quaking Aspen</i>		703	<i>Cords</i>		
	Mixed Hardwood		496	Cords		
	<i>Paper Birch</i>		33	<i>Cords</i>		
	<i>Red Maple</i>		463	<i>Cords</i>		
	Mixed Spruce		29	Cords		
	<i>White Spruce</i>		29	<i>Cords</i>		
9	Balsam Fir	Pulpwood	24	Cords	19.5	\$10,334.70
	Mixed Aspen		525	Cords		
	<i>B. T. Aspen</i>		13	<i>Cords</i>		
	<i>Quaking Aspen</i>		512	<i>Cords</i>		
	Mixed Hardwood		80	Cords		
	<i>Paper Birch</i>		6	<i>Cords</i>		
	<i>Red Maple</i>		72	<i>Cords</i>		
	<i>Sugar Maple</i>		2	<i>Cords</i>		
	Mixed Spruce		18	Cords		
	<i>Black Spruce</i>		4	<i>Cords</i>		
	<i>White Spruce</i>		14	<i>Cords</i>		
10	Balsam Fir	Pulpwood	69	Cords	56.0	\$29,648.35
	Mixed Aspen		1,506	Cords		
	<i>B. T. Aspen</i>		37	<i>Cords</i>		
	<i>Quaking Aspen</i>		1,469	<i>Cords</i>		
	Mixed Hardwood		231	Cords		
	<i>Paper Birch</i>		18	<i>Cords</i>		
	<i>Red Maple</i>		206	<i>Cords</i>		
	<i>Sugar Maple</i>		7	<i>Cords</i>		
	Mixed Spruce		50	Cords		
	<i>Black Spruce</i>		11	<i>Cords</i>		
	<i>White Spruce</i>		39	<i>Cords</i>		

DESCRIPTION OF TIMBER BY PAYMENT UNIT (PU), CON'T

PU	MARKET GROUP	PRODUCT	QUANTITY	UNIT	ACRES	ADVERTISE PRICE
11	Balsam Fir	Pulpwood	28	Cords	45.3	\$18,049.70
	Mixed Aspen		939	Cords		
	<i>B. T. Aspen</i>		29	<i>Cords</i>		
	<i>Quaking Aspen</i>		910	<i>Cords</i>		
	Mixed Hardwood		109	Cords		
	<i>Basswood</i>		2	<i>Cords</i>		
	<i>Red Maple</i>		107	<i>Cords</i>		
	Mixed Spruce		38	Cords		
	<i>White Spruce</i>		38	<i>Cords</i>		
12	Balsam Fir	Pulpwood	31	Cords	48.8	\$19,459.10
	Mixed Aspen		1,011	Cords		
	<i>B. T. Aspen</i>		31	<i>Cords</i>		
	<i>Quaking Aspen</i>		980	<i>Cords</i>		
	Mixed Hardwood		119	Cords		
	<i>Basswood</i>		3	<i>Cords</i>		
	<i>Red Maple</i>		116	<i>Cords</i>		
	Mixed Spruce		41	Cords		
	<i>White Spruce</i>		41	<i>Cords</i>		
13	Balsam Fir	Pulpwood	28	Cords	47.9	\$27,961.15
	Balsam Poplar		48	Cords		
	Mixed Aspen		1,505	Cords		
	<i>B. T. Aspen</i>		95	<i>Cords</i>		
	<i>Quaking Aspen</i>		1,410	<i>Cords</i>		
	Mixed Hardwood		65	Cords		
	<i>Paper Birch</i>		4	<i>Cords</i>		
	<i>Red Maple</i>		57	<i>Cords</i>		
	<i>Sugar Maple</i>		1	<i>Cords</i>		
	<i>Yellow Birch</i>		3	<i>Cords</i>		
	Mixed Spruce		29	Cords		
	<i>Black Spruce</i>		1	<i>Cords</i>		
	<i>White Spruce</i>		28	<i>Cords</i>		
14	Balsam Fir	Pulpwood	29	Cords	50.4	\$29,419.75
	Balsam Poplar		51	Cords		
	Mixed Aspen		1,583	Cords		
	<i>B. T. Aspen</i>		100	<i>Cords</i>		
	<i>Quaking Aspen</i>		1,483	<i>Cords</i>		
	Mixed Hardwood		69	Cords		
	<i>Paper Birch</i>		4	<i>Cords</i>		
	<i>Red Maple</i>		60	<i>Cords</i>		
	<i>Sugar Maple</i>		1	<i>Cords</i>		
	<i>Yellow Birch</i>		4	<i>Cords</i>		
	Mixed Spruce		30	Cords		
	<i>Black Spruce</i>		1	<i>Cords</i>		
	<i>White Spruce</i>		29	<i>Cords</i>		
15	Balsam Fir	Pulpwood	9	Cords	16.5	\$7,663.45
	Mixed Aspen		367	Cords		
	<i>Quaking Aspen</i>		367	<i>Cords</i>		
	Mixed Hardwood		94	Cords		
	<i>Paper Birch</i>		3	<i>Cords</i>		
	<i>Red Maple</i>		91	<i>Cords</i>		
	Mixed Spruce		12	Cords		
	<i>White Spruce</i>		12	<i>Cords</i>		
TOTAL:			25.9	MBF		
TOTAL:			16,478	Cords		

Sale Specific Conditions & Requirements

Sale Name: GNA2 Hare Ball

Sale Number: 11-810-25 Seq#: 1

1 - Sale Area

1.2 - Boundaries

1.2.1 - Painted Boundaries (9/19)

The sale boundary and Payment Unit boundaries are marked and identified by orange paint. Exterior sale boundary lines against private property are marked with orange paint and red blaze, with the exception of the southern boundaries of Payment Units 11 and 12 that are unpainted and designated by the access road (see Timber Sale Map). Exterior sale boundary lines against USFS are marked with orange paint. Retention patches are marked with orange paint; no harvesting activities may occur within these areas. The painted boundary line trees and Payment Unit boundary trees are not Included Timber and are to be protected.

2 - Timber Specifications

2.1 - Included Timber

2.1.1 - Clearcut Unit(s) with Unmerchantable Trees (6/14)

Within Payment Unit(s) 1-15, cut all trees that are 4.5 inches or more at DBH, except do not cut oak, cherry, elm, cedar, hemlock, red pine or white pine.

Special protection areas identified in accordance with condition 3.4.3, within clearcutting unit boundaries, are not Included Timber and are to be protected.

2.2 - Utilization

2.2.4 - Skidding Length (12/24)

Skidding of lengths over 17 feet is permissible as long as the Sale Administrator approves the method and machinery used. If at any point damage exceeds specification 3.4.1, all of the remaining wood must be skid in lengths less than 17 feet.

2.2.8 - Utilization and Removal (12/24)

All products meeting standards set forth in General Condition and Requirement 2.2 - Utilization must be removed from the Sale Area. All products not meeting standards set forth in General Condition and Requirement 2.2 - Utilization may not be removed from the Sale Area, e.g. tops. Retain on site more than 1/3 of the slash from harvested trees [treetops and limbs less than four (4) inches in diameter]. This is because scattered tops and limbs help maintain soil nutrients and provide for wildlife habitat and biodiversity.

2.2.9 - No Chipping Permitted (12/08)

Within Payment Unit(s) 1-15, all wood must be removed by whole tree, tree segment, or roundwood. No chipping is permitted, this includes merchantable/non merchantable (tops) products.

2.2.12 - GNA, Cut and Remove Included Timber (3/18)

Unless provided otherwise herein, the DNR agrees to sell and permit Purchaser to cut and remove Included Timber, and Purchaser agrees to purchase, cut, and remove Included Timber.

3 - Payments

3.4 - Damaged Timber

3.4.1 - Damaged Timber (12/24)

General Condition and Requirement 3.4 Damaged Timber, defines liquidated damages for undesignated live merchantable trees which are cut or injured. In addition, extreme care should be taken to avoid damage to tree seedlings and saplings.

3.4.3 - Special Protection Areas (8/11)

The Purchaser shall protect special protection areas from damage by the Purchaser's operations. Special protection areas are marked with triple orange slash boundary line and letters "PA". The Purchaser shall not enter protected areas for any reason. No trees are to be felled across protected area boundary and all slash is to be kept a minimum of 10 feet away from the protected area boundary. Areas of concern will be discussed with the Purchaser at the pre-sale meeting. If the Purchaser's

operations have cut or damaged special protection areas through carelessness, the Purchaser shall be responsible for all damages to the site and costs incurred with restoration. Such payment does not constitute ownership of the undesignated timber. This will be discussed with the Purchaser at the pre-sale meeting.

4 - Transportation

4.1 - Construction

4.1.3 - Slash and Earthen Piles (8/04)

Piles or windrows of earth along roads and landings that have been widened or constructed shall be leveled. Slash from road maintenance or construction, including stumps, shall be dispersed throughout the sale.

4.1.5 - Culverts (5/14)

Roads may require the installation of culverts for cross drainage or at natural drainage-ways. If culverts are needed in these locations, their placement will be specified by the Sale Administrator, and they shall be installed prior to hauling. The culverts shall be new, corrugated metal or plastic gauge. Culverts will be a minimum of 12 inches in diameter and 24 feet in length. If culverts are removed, fill shall be removed from wetland soils as specified. Soils shall be maintained and left in a non-erodible condition, with water bars, seed, fertilizer, mulch, and slash installed as directed by the Sale Administrator and as specified in the BMP manual. Stream crossing permits, if needed, will be obtained by the DNR for crossings on USFS land (see Timber Sale Map for locations). A non-permittable crossing on FDR 803 will need to be permanently replaced with an 18-inch diameter and 24 foot in length culvert. This segment of road has a road use permit for private access across the USFS landholding (see Timber Sale Map for location).

4.1.6 - Road Construction (4/24)

Construction of new roads or improvements of existing roads shall be done in such a way as to minimize the environmental and visual impacts. Merchantable trees shall be cut and utilized unless otherwise directed. Non-merchantable trees shall be severed and laid flat on the ground. Slash shall be scattered and not left in windrows and kept a minimum of 10 feet back from the road edge. Within Payment Unit 1, the road must be kept within the Sale Area. A temporary road will need to be constructed connecting the existing road system within Payment Unit 4 to the access road from Payment Unit 7 (see Timber Sale Map). In addition, per the USFS, the road within Payment Unit 8 will need to be moved to the south to bypass drains to prevent the possibility of erosion (see Timber Sale Map). Stumps shall be set upright, not left on edge, and be moved at least 10 feet away from the road edge. Disturbed soil shall be feathered into the woods and not left in berms or windrows.

4.1.7 - Road Closure (10/11)

All new roads built into the sale must be blocked to vehicle traffic upon completion of the sale. Overgrown roads that are reopened shall be considered new roads. Some existing roads may also need to be closed. The three roads leading north off FDR 803 will need to be blocked to vehicle traffic when they are no longer in use for sale access. In general, this will require constructing a four (4') foot high berm of stumps and logs covered with earth. These roads must be rendered impassable to cars and trucks. All stumps from road building and landing construction must be reserved to block any newly constructed roads upon completion of the sale. These stumps must be scattered along the road system to prohibit vehicular movement. Temporary berms may be required if no sale activity occurs for 30 or more consecutive days. Contact the Sale Administrator for specific details of design and placement.

4.2 - Maintenance

4.2.1 - Hauling Restriction (12/08)

Hauling may be restricted on forest roads by the Unit Manager or his/her representative. The restriction may occur during spring breakup or during periods of wet weather.

4.2.2 - Fill Material (4/07)

To maintain roads, fill material may be needed in areas where "holes" exist or may be expected to develop. This fill material should be placed before trucking begins. Contact the Sale Administrator regarding the availability of onsite sand or gravel from adjacent USFS lands.

4.2.4 - Grading (10/16)

For completion of the sale, state forest roads must be graded. In general, this will require a road grader or bulldozer to shape up the roads after forest products have been hauled off site. This includes cleaning of drainage areas, grading, crowning and filling with gravel, if necessary. The grading equipment to be used must be approved by the Unit Manager or his/her representative.

4.4 - Access

4.4.1 - Private property access (3/11)

Permission for access across private land is the responsibility of the Purchaser. Landowner contact information is available from Baraga DNR GNA staff. A copy of the written permission from the private landowner must be given to the Unit Manager within 30 days of the bid opening and prior to the beginning of operations.

5 - Operations

5.1 - Notification

5.1.1 - Pre-sale Conference (10/16)

A pre-sale conference on site between the Purchaser and Sale Administrator is required prior to beginning any operations to determine landing and road locations. The Unit Manager or his/her representative must be contacted at least 10 days in advance to schedule the conference.

5.2 - Conduct of Operations

5.2.2 - Hazard Trees/Snags

5.2.2.1 - Den Trees (10/16)

Obvious hollow and/or den trees shall be protected and left standing unless they are a safety hazard.

5.2.3 - Operating Restrictions

5.2.3.1 - Operating Restrictions (9/11)

Within Payment Unit(s) 1-15, unless changed by written agreement, cutting, skidding, and hauling are limited to the period of December 1 to March 15, or winter frozen ground. This restriction is due to USFS seasonal operating restrictions.

5.2.32 - Decking/Landing Restoration (9/13)

All decking and landing areas must have the surface area restored to a condition equal to or better than before. This is to ensure the proper regeneration of the stand. Wood debris, chips and "cookies" from trimmings must be removed or scattered away from landing and loading areas and may not be windrowed on the edge.

5.2.38 - No Decking Against Live Trees (2/04)

Cut products may not be decked against unmarked or designated leave trees.

5.4 - Soil Protection

5.4.1 - Rutting Restriction, General (7/16)

Operations are to cease immediately if equipment and weather conditions result in rutting of roads and/or skid trails which are 6 inches or greater in depth and 25 feet in length. The Unit Manager or his/her representative may restrict hauling and/or skidding if ruts exceed the specified depth. With the Unit Manager or his/her representative's approval, the Purchaser may return to the area when the risk of rutting has decreased.

5.4.3 - Erosion Control (12/08)

Skid trails or haul roads may require erosion control structures or berms per direction of the Unit Manager or his/her representative.

5.6 - Debris and Waste Material

5.6.2 - GNA, Equipment Cleaning (4/24)

(a) Areas, known by the DNR prior to timber sale advertisement, that are infested with invasive species of concern are shown on the Timber Sale Map. A current list of invasive species of concern and a map showing the extent of known infestations is available from the DNR. For purposes of this provision, "Off-Road Equipment" includes all logging and construction machinery, except for log trucks, chip vans, service vehicles, water trucks, pickup trucks, cars, and similar vehicles.

(b) Purchaser shall adhere to the following requirements with regard to cleaning "Off-Road Equipment":

(i) Prior to moving Off-Road Equipment onto the Sale Area, Purchaser shall identify the location of the equipment's most

recent operation. Purchaser shall not move any Off-Road Equipment that last operated in an area infested with one or more invasive species of concern onto Sale Area without having cleaned such equipment of seeds, soil, vegetative matter, and other debris that could contain or hold seeds, and having notified the DNR, as provided in (iii). If the location of prior operation cannot be identified, then Purchaser shall assume that the location is infested with invasive species of concern.

(ii) Prior to moving Off-Road Equipment from a cutting unit that is shown on the Timber Sale Map to be infested with invasive species of concern to, or through any other area that is shown as being free of invasive species of concern, or infested with a different invasive species, Purchaser shall clean such equipment of seeds, soil, vegetative matter, and other debris that could contain or hold seeds, and shall notify the DNR, as provided in (iii).

(iii) Prior to moving any Off-Road Equipment subject to the cleaning requirements set forth above, Purchaser shall advise DNR of its cleaning measures and make the equipment available for inspection. DNR shall have two (2) days, excluding weekends and State holidays, to inspect equipment after it has been made available. After satisfactory inspection or after such 2-day period, Purchaser may move the equipment as planned. Equipment shall be considered clean when a visual inspection does not disclose seeds, soil, vegetative matter, and other debris that could contain or hold seeds. Purchaser shall not be required to disassemble equipment unless so directed by the DNR after inspection.

(iv) If Purchaser desires to clean Off-Road Equipment on National Forest land, such as at the end of a project or prior to moving to, or through an area that is free of invasive species of concern, Purchaser shall obtain prior approval from the Unit Manager or his/her representative as to the location for such cleaning and measures, if any, for controlling impacts.

(v) Unit Manager or his/her representative may order delay, interruption, or modification of this Contract pursuant to Condition & Requirement 7.3 or 7.3.4.

(c) Nothing contained in this Condition & Requirement shall be interpreted as creating any warranty on the part of the DNR that all locations of invasive species of concern have been described herein, elsewhere in this Contract, or designated on the ground. Following sale advertisement, additional locations may be described or designated, and other species may be added to the list of invasive species of concern. In such event, the Unit Manager or his/her representative may order delay, interruption, or modification of this Contract pursuant to Condition & Requirement 7.3 or 7.3.4.

(d) The parties shall promptly communicate with one another with respect to description or designation of additional locations; discovery of locations of new species or new infestation; and, addition of species to the list of invasive species of concern.

5.8 - Protection of Endangered Species

5.8.5 - Protection of Raptor Nests (3/13)

All trees with raptor nests will be protected if found during harvesting operations. Notification will be made to the Unit Manager or his/her representative who will notify the Wildlife Biologist so an onsite evaluation and recommendation can be made, if necessary.

6 - Safety and Fire Prevention

6.2 - Signing

6.2.1 - Road Posting (10/20)

The Purchaser is responsible for posting and maintaining caution signs on Teal Road and/or 1 1/2 Mile Road prior to beginning operations. The road must be posted at appropriate distances from the Sale Area to warn of logging activity and truck traffic. Signs must be removed when harvest operations are suspended or completed. The Purchaser will provide these signs.

7 - Other Conditions

SKIP

7.1.1 - GNA, Title (7/16)

General Condition & Requirement 7.1 is inapplicable. The following applies to this contract.

All right, title, and interest in and to any Included Timber shall remain in USDA Forest Service with the State of Michigan acting on behalf of the USDA Forest Service under this GNA contract, until it has been Measured, removed from Sale Area

or other authorized cutting area, and paid for, at which time title shall vest in Purchaser. Title to any Included Timber that has been Measured and paid for, but not removed from Sale Area or other authorized cutting area by Purchaser on or prior to Termination Date, shall remain in USDA Forest Service.

7.3 - Contract Modifications

7.3.4 - GNA, Contract Suspension and Modification (5/16)

(a) The Unit Manager may, by written order, delay or interrupt authorized operations under this contract or, notwithstanding Condition & Requirement 7.3, modify this contract, in whole or in part:

(i) To prevent environmental degradation or resource damage, including, but not limited to, harm to habitat, plants, animals, cultural resources, or cave resources;

(ii) To ensure consistency with land and resource management plans or other documents prepared pursuant to the National Environmental Policy Act of 1969, 42 USC 4321-4347;

(iii) To conduct environmental analysis, including, but not limited to, engaging in consultation pursuant to the Endangered Species Act of 1973, 16 USC 1531, et seq.; or

(iv) Upon agreement of the Forest Service, due to administrative appeal or litigation, regardless of whether the Unit Manager's order is required by a court order or this contract is named in such a proceeding.

(b) In the event of an order delaying or interrupting Purchaser's Operations under this Condition & Requirement, Purchaser's remedy shall be:

(i) a no cost contract extension,

(ii) reimbursement for Out-of-Pocket Expenses,

however, the foregoing remedies shall be available only to the extent that the Unit Manager's order was the sole and exclusive cause of the delay or interruption of Purchaser's operations.

(c) Remedies awarded to the Purchaser shall not be duplicative, and the Unit Manager shall have the right to structure remedies provided herein to avoid duplicative compensation.

(d) Purchaser agrees that this Condition & Requirement, and the remedies provided herein shall apply regardless of any finding by any court that the DNR failed to comply with any statute, regulation and/or policy in connection with awarding, advertising, or authorizing this sale, or a similar sale.

7.5 - Loss

7.5.1 - Deteriorating Timber (7/09)

The Sale Area has received damage from Emerald Ash Borer (EAB). The Purchaser should harvest the wood as soon as possible. The Department of Natural Resources is held free of responsibility of any further damage or deterioration due to delay in harvesting.

7.5.2 - GNA, Liability for Loss (7/16)

If Included Timber is destroyed or damaged by an unexpected event that changes the nature of Included Timber, such as wind, flood, insects, disease, or similar cause, the Purchaser shall bear the timber value loss resulting from such destruction or damage.

Deterioration or loss of timber value due to delay or interruption under 7.3.4 - GNA, contract suspension and modification, shall be borne by the party holding title. In this event, Included Timber to which USDA Forest Service holds title, Purchaser of the State GNA contract will not be obligated to remove and pay for such timber. This Subsection shall not be construed to relieve either party of liability for negligence.

7.10 - Certified Timber

7.10.1 - Non-Certified Timber (2/16)

The area encompassed by this timber sale is not certified to the standards of the Forest Stewardship Council (FSC) or the Sustainable Forestry Initiative (SFI). Forest products from this sale may not be delivered to the mill as "FSC and / or SFI certified". The lands within this sale are managed for military training. The lands within this sale are managed as a State Game Area. The lands within this sale belong to the National Forest system and are being managed by the State as part of a Good Neighbor Authority (GNA) agreement.

**TIMBER SALE MAP**

This information provided by authority of Part 525, 1994 PA 451, as amended.

Sale Number

11-810-25

Date

03/25/2025

Forest Management Unit

Baraga Mgt Unit

County

Ontonagon

Mapped By: Sullivan

Cruised By: Sullivan/Collins

Scale

1:20,000

Page

1

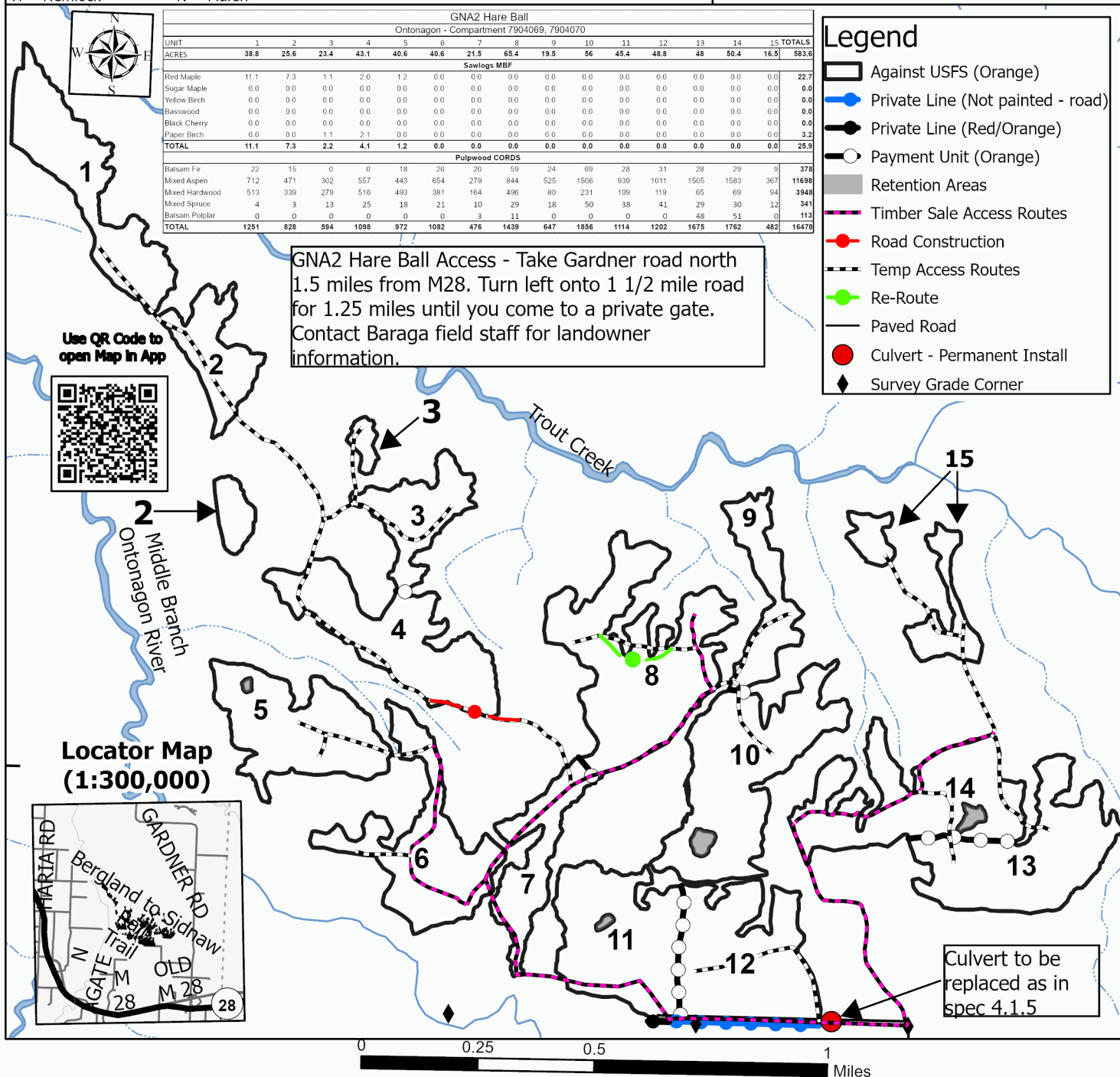
Of

1Township
47N / 48NRange
38WSection(s) and
Subdivision(s)Sec. 3 N1/2NE; Sec. 33 E1/2NW,NE,N1/2SE,SESE; Sec. 34 NW,NE,SW,SE; Sec. 35 NWNW,S1/2NW,N1/2SW;
Sec. 21 SWSW; Sec. 26 SWSW; Sec. 27 S1/2SW,S1/2SE; Sec. 28 NWNW,S1/2NW,E1/2SW,SE; Sec. 29 NENE;**Cover Type**

A = Aspen
B = Paper Birch
C = Cedar
D = Treed Bog
E = Swamp Hardwoods
F = Spruce/Fir
G = Grass
H = Hemlock
J = Jack Pine
K = Rock
L = Lowland Brush
LM = Lowland Mix Forest
M = Maple, Beech, Birch
MC = Mixed Conifer
MD = Mixed Deciduous
N = Marsh
O = Oak
P = Lowland Poplar
Q = Mixed Swamp Conifer
R = Red Pine
S = Black Spruce
T = Tamarack
U = Upland Brush
UM = Upland Mix Forest
V = Bog or Marsh
W = White Pine
X = Non Stocked
Y = Sand
Z = Water

Density

0 = Non Stocked
1 = Seedling Sapling Poor
2 = Seedling Sapling Medium
3 = Seedling Sapling Well
4 = Pole Timber Poor
5 = Pole Timber Medium
6 = Pole Timber Well
7 = Saw Timber Poor
8 = Saw Timber Medium
9 = Saw Timber Well



GNA2 Hare Ball (11-810-25)

T47N, R38W, SEC. 3; T48N, R38W, SEC. 21; T48N, R38W, SEC. 26; T48N, R38W,

In response to the notice of sale to be held 9:00 a.m. (local time) on June 5, 2025, I am hereby submitting my sealed bid (firm offer) for the following forest products to be cut. Bids for individual species must be at or above the advertised price. All non-responsive bid forms may be rejected.

<u>PRODUCTS & SPECIES</u>	<u>ESTIMATED VOLUME*</u>	<u>ADVERTISED PRICE</u>	<u>BID PRICE/UNIT</u>
Sawtimber			
Paper Birch	3.2 MBF	\$ 43.00/MBF	\$ _____
Red Maple	22.7 MBF	\$ 128.00/MBF	\$ _____
Pulpwood			
Balsam Fir	378 Cords	\$ 4.45/Cord	\$ _____
Balsam Poplar	113 Cords	\$ 17.20/Cord	\$ _____
Mixed Aspen	11,698 Cords	\$ 17.20/Cord	\$ _____
Mixed Hardwood	3,948 Cords	\$ 12.60/Cord	\$ _____
Mixed Spruce	341 Cords	\$ 10.55/Cord	\$ _____

*The volumes are statistically estimated within plus (+) or minus (-) 6.61 percent at 95% confidence level. These estimated volumes are final and not subject to adjustment. Prospective bidders are urged to examine this timber and to make their own estimates of quantity and quality.

I understand that any or all bids may be rejected. All bids must be signed and all bid items must be bid or the bid form may be rejected. I also understand that consideration and awarding a contract will be based upon my past performance and ability to complete the contract based upon equipment and staffing subject to my control .

FEDERAL ID: ____ - ____ - ____ or SOCIAL SECURITY NUMBER: ____ - ____ - ____
 Company or individual bidding: _____
 Company representative's name: _____
 Address: _____
 City: _____ State: _____ Zip: _____

IF AVAILABLE, PLEASE PLACE THE PERSONALIZED LABEL FROM YOUR PROSPECTUS IN THE ABOVE BOX.

Individual or company representative's signature: _____ Date: _____

Phone number : _____ Email (optional): _____

**THE WINNING BIDDER MUST COMPLETE THE VERIFICATION OF WORKER'S DISABILITY COMPENSATION ACT
COMPLIANCE (ON REVERSE SIDE IF DOUBLE SIDED) WITHIN 21 DAYS OF SALE AWARD DATE**



TIMBER SALE
VERIFICATION OF WORKER'S DISABILITY
COMPENSATION ACT COMPLIANCE

*As required by Act 317, P.A. 1969 (Worker's Compensation) and
Part 5 of Act 451 of 1994, as amended.*

FOR DEPARTMENT USE ONLY

Sale Number (XX - XXX - XX - XX)

Forest Management Unit:

VERIFICATION OF WORKER'S DISABILITY COMPENSATION ACT COMPLIANCE

- This verification must be completed and submitted within 21 days of contract award and prior to the issuance of the timber sale contract.
- In addition, if boxes 2B or 2C are checked, then Notice of Exclusion or Certificate of Insurance must be submitted within twenty-one (21) days of the contract award and prior to the issuance of the timber sale contract.
- All Information must be typed or printed except for written signatures.

Please Check Appropriate Categories:

1. My business is organized as (you **must** check one of the boxes below):
 - A. ☐ Sole Proprietorship (individual)
 - B. ☐ Partnership
 - C. ☐ Corporation
2. You **must** check one of the boxes below:
 - A. ☐ I certify my business is a sole proprietorship and it has no employees but the sole proprietor. I am not subject to the Worker's Compensation Laws.
 - B. ☐ I certify my business has satisfied its obligation to the Worker's Compensation Act through the use of an approved Notice of Exclusion (BWC-337, Rev. 5/96). I will provide a copy of the Notice of Exclusion within 21 days of the contract award. (For questions or a copy of the BWC-337, please call the Worker's Compensation Bureau at 517-322-1195).
 - C. ☐ I certify my business has a Worker's Compensation Policy. I will provide an original Certificate of Insurance within twenty-one (21) days of the contract award.
3. If you have checked item 2(A) or 2(B), you **must** indicate the number of **both** full-time and part-time employees, other than yourself, including family members and active partners (if none, you must enter "0").

_____ Full-time Employees

_____ Part-time Employees

Name of Business		Federal ID (or) Social Security No.
Address		Telephone ()
City	State	ZIP

I hereby certify that the above information is true and correct. I agree to notify the Michigan DNR of any changes that occur in factors affecting my coverage during any of my present and future operations.

Signature of Owner or Authorized Representative

Title

Date

Please complete the "SEALED BID" information on the next page

Dead Sled Pulp (11-003-25)
T52N, R30W, SEC. 32; Baraga COUNTY

In response to the notice of sale to be held 9:00 a.m. (local time) on June 5, 2025, I am hereby submitting my sealed bid (firm offer) for the following forest products to be cut. Bids for individual species must be at or above the advertised price. All non-responsive bid forms may be rejected.

<u>PRODUCTS & SPECIES</u>	<u>ESTIMATED VOLUME*</u>	<u>ADVERTISED PRICE</u>	<u>BID PRICE/UNIT</u>
Sawtimber			
Red Maple	26.1 MBF	\$ 141.00/MBF	\$ _____
Sugar Maple	2.7 MBF	\$ 271.00/MBF	\$ _____
Pulpwood			
Basswood	6 Cords	\$ 6.30/Cord	\$ _____
Mixed Aspen	1,300 Cords	\$ 19.00/Cord	\$ _____
Mixed Hardwood	873 Cords	\$ 13.90/Cord	\$ _____
Mixed Spruce	262 Cords	\$ 11.60/Cord	\$ _____
Paper Birch	33 Cords	\$ 2.45/Cord	\$ _____

*The volumes are statistically estimated within plus (+) or minus (-) 18.31 percent at 95% confidence level. These estimated volumes are final and not subject to adjustment. Prospective bidders are urged to examine this timber and to make their own estimates of quantity and quality.

I understand that any or all bids may be rejected. All bids must be signed and all bid items must be bid or the bid form may be rejected. I also understand that consideration and awarding a contract will be based upon my past performance and ability to complete the contract based upon equipment and staffing subject to my control .

FEDERAL ID: ____ - ____ - ____ or SOCIAL SECURITY NUMBER: ____ - ____ - ____
Company or individual bidding: _____
Company representative's name: _____
Address: _____
City: _____ State: _____ Zip: _____

IF AVAILABLE, PLEASE PLACE THE PERSONALIZED LABEL FROM YOUR PROSPECTUS IN THE ABOVE BOX.

Individual or company representative's signature: _____ Date: _____

Phone number : _____ Email (optional): _____

**THE WINNING BIDDER MUST COMPLETE THE VERIFICATION OF WORKER'S DISABILITY COMPENSATION ACT
COMPLIANCE (ON REVERSE SIDE IF DOUBLE SIDED) WITHIN 21 DAYS OF SALE AWARD DATE**



TIMBER SALE VERIFICATION OF WORKER'S DISABILITY COMPENSATION ACT COMPLIANCE

As required by Act 317, P.A. 1969 (Worker's Compensation) and
Part 5 of Act 451 of 1994, as amended.

FOR DEPARTMENT USE ONLY

Sale Number (XX - XXX - XX - XX)

Forest Management Unit:

VERIFICATION OF WORKER'S DISABILITY COMPENSATION ACT COMPLIANCE

- This verification must be completed and submitted within 21 days of contract award and prior to the issuance of the timber sale contract.
- In addition, if boxes 2B or 2C are checked, then Notice of Exclusion or Certificate of Insurance must be submitted within twenty-one (21) days of the contract award and prior to the issuance of the timber sale contract.
- All information must be typed or printed except for written signatures.

Please Check Appropriate Categories:

1. My business is organized as (you **must** check one of the boxes below):
 - A. ☐ Sole Proprietorship (individual)
 - B. ☐ Partnership
 - C. ☐ Corporation
2. You **must** check one of the boxes below:
 - A. ☐ I certify my business is a sole proprietorship and it has no employees but the sole proprietor. I am not subject to the Worker's Compensation Laws.
 - B. ☐ I certify my business has satisfied its obligation to the Worker's Compensation Act through the use of an approved Notice of Exclusion (BWC-337, Rev. 5/96). I will provide a copy of the Notice of Exclusion within 21 days of the contract award. (For questions or a copy of the BWC-337, please call the Worker's Compensation Bureau at 517-322-1195).
 - C. ☐ I certify my business has a Worker's Compensation Policy. I will provide an original Certificate of Insurance within twenty-one (21) days of the contract award.
3. If you have checked item 2(A) or 2(B), you **must** indicate the number of **both** full-time and part-time employees, other than yourself, including family members and active partners (if none, you must enter "0").

_____ Full-time Employees

_____ Part-time Employees

Name of Business		Federal ID (or) Social Security No.
Address		Telephone ()
City	State	ZIP

I hereby certify that the above information is true and correct. I agree to notify the Michigan DNR of any changes that occur in factors affecting my coverage during any of my present and future operations.

Signature of Owner or Authorized Representative

Title

Date

Please complete the "SEALED BID" information on the next page

Mike's Mix (11-010-25)
T48N, R32W, SEC. 4; Baraga COUNTY

In response to the notice of sale to be held 9:00 a.m. (local time) on June 5, 2025, I am hereby submitting my sealed bid (firm offer) for the following forest products to be cut. Bids for individual species must be at or above the advertised price. All non-responsive bid forms may be rejected.

<u>PRODUCTS & SPECIES</u>	<u>ESTIMATED VOLUME*</u>	<u>ADVERTISED PRICE</u>	<u>BID PRICE/UNIT</u>
Sawtimber			
Paper Birch	1.2 MBF	\$ 48.00/MBF	\$ _____
Pulpwood			
Balsam Fir	44 Cords	\$ 4.90/Cord	\$ _____
Basswood	36 Cords	\$ 6.30/Cord	\$ _____
Mixed Aspen	166 Cords	\$ 19.00/Cord	\$ _____
Mixed Hardwood	194 Cords	\$ 13.90/Cord	\$ _____
Mixed Spruce	166 Cords	\$ 11.60/Cord	\$ _____
Paper Birch	85 Cords	\$ 2.45/Cord	\$ _____
Red Pine	670 Cords	\$ 73.85/Cord	\$ _____
Tamarack	86 Cords	\$ 9.00/Cord	\$ _____

*The volumes are statistically estimated within plus (+) or minus (-) 18.84 percent at 95% confidence level. These estimated volumes are final and not subject to adjustment. Prospective bidders are urged to examine this timber and to make their own estimates of quantity and quality.

I understand that any or all bids may be rejected. All bids must be signed and all bid items must be bid or the bid form may be rejected. I also understand that consideration and awarding a contract will be based upon my past performance and ability to complete the contract based upon equipment and staffing subject to my control .

FEDERAL ID: ____ - ____ - ____ or SOCIAL SECURITY NUMBER: ____ - ____ - ____
 Company or individual bidding: _____
 Company representative's name: _____
 Address: _____
 City: _____ State: _____ Zip: _____

IF AVAILABLE, PLEASE PLACE THE PERSONALIZED LABEL FROM YOUR PROSPECTUS IN THE ABOVE BOX.

Individual or company representative's signature: _____ Date: _____

Phone number : _____ Email (optional): _____

**THE WINNING BIDDER MUST COMPLETE THE VERIFICATION OF WORKER'S DISABILITY COMPENSATION ACT
COMPLIANCE (ON REVERSE SIDE IF DOUBLE SIDED) WITHIN 21 DAYS OF SALE AWARD DATE**



TIMBER SALE
VERIFICATION OF WORKER'S DISABILITY
COMPENSATION ACT COMPLIANCE

*As required by Act 317, P.A. 1969 (Worker's Compensation) and
Part 5 of Act 451 of 1994, as amended.*

FOR DEPARTMENT USE ONLY

Sale Number (XX – XXX – XX – XX)

Forest Management Unit:

VERIFICATION OF WORKER'S DISABILITY COMPENSATION ACT COMPLIANCE

- This verification must be completed and submitted within 21 days of contract award and prior to the issuance of the timber sale contract.
- In addition, if boxes 2B or 2C are checked, then Notice of Exclusion or Certificate of Insurance must be submitted within twenty-one (21) days of the contract award and prior to the issuance of the timber sale contract.
- All Information must be typed or printed except for written signatures.

Please Check Appropriate Categories:

1. My business is organized as (you **must** check one of the boxes below):
 - A. ☐ Sole Proprietorship (individual)
 - B. ☐ Partnership
 - C. ☐ Corporation
2. You **must** check one of the boxes below:
 - A. ☐ I certify my business is a sole proprietorship and it has no employees but the sole proprietor. I am not subject to the Worker's Compensation Laws.
 - B. ☐ I certify my business has satisfied its obligation to the Worker's Compensation Act through the use of an approved Notice of Exclusion (BWC-337, Rev. 5/96). I will provide a copy of the Notice of Exclusion within 21 days of the contract award. (For questions or a copy of the BWC-337, please call the Worker's Compensation Bureau at 517-322-1195).
 - C. ☐ I certify my business has a Worker's Compensation Policy. I will provide an original Certificate of Insurance within twenty-one (21) days of the contract award.
3. If you have checked item 2(A) or 2(B), you **must** indicate the number of **both** full-time and part-time employees, other than yourself, including family members and active partners (if none, you must enter "0").

_____ Full-time Employees

_____ Part-time Employees

Name of Business		Federal ID (or) Social Security No.
Address		Telephone ()
City	State	ZIP

I hereby certify that the above information is true and correct. I agree to notify the Michigan DNR of any changes that occur in factors affecting my coverage during any of my present and future operations.

Signature of Owner or Authorized Representative

Title

Date

Please complete the "SEALED BID" information on the next page