



**DEPARTMENT OF NATURAL RESOURCES
STATE OF MICHIGAN
TIMBER SALE PROSPECTUS #7608**

SCHEDULED SALE DATE AND TIME: 9:00 a.m. (local time) on May 13, 2025.

LOCATION: GAYLORD MGMT UNIT, 1732 WEST M 32, GAYLORD, MI 49735.

PROSPECTUS NOTE: The bidder is advised to inspect the sale area and review the location, estimated volumes, operating costs and contract terms of proposed sales. Please be aware that some landowners may request 60 days or more notice for access across their land.

Notice is hereby given that bids will be received by the Unit Manager, GAYLORD MANAGEMENT UNIT, for certain timber on the following described lands:

Big Rock Beaver Hut Hardwoods (52-006-24) / T30N, R06W, SEC. 16, SESW,S1/2SE.

T30N, R06W, SEC. 21, NW,NE,NESW,NWSE.

Antrim County, Advertised Price \$214,423.30, 238.9 Acres, Sugar Maple, Hardwood.

SALE NOTE: This sale is a 4 year contract with no extensions. This sale is located north of Alba Hwy 0.3 miles. Access on this sale will require the use of timber/composite mats. Seasonal timing restrictions on Payment Unit 2 and frozen or dry conditions required on Payment Unit 4.

Future Legacy Hardwoods (52-007-24) / T30N, R06W, SEC. 4 , NW,W1/2NE,SW,NWSE.

T30N, R06W, SEC. 5 , E1/2NE,NESE.

Antrim County, Advertised Price \$176,181.50, 217.6 Acres, Hardwood, Aspen.

SALE NOTE: This sale is a 4 year contract with no extensions. The access for this sale is located off of Graves Crossing Rd. within the Jordan River Valley. The sale is 1/2 mile down a forest access route. This route will need to be brushed and log truck access to the sale is not guaranteed.

Mahovlich Aspen (52-103-24) / T34N, R04W, SEC. 13, S1/2SE.

T34N, R04W, SEC. 23, N1/2NE,SENE.

T34N, R04W, SEC. 24, N1/2NE.

Emmet County, Advertised Price \$21,249.15, 27.4 Acres, Aspen, Hardwood.

SALE NOTE: Motorcycle trail located along harvest boundary in Payment Unit 1. Also, utility ROW present adjacent to Payment Unit 1. 4-year contract. No extensions will be granted,

A recreation site such as a trail, pathway, or campground is within the sale area or the vicinity. Certain restrictions/specifications may be applicable including time restrictions.

Around the 40 Aspen Mix (52-125-22) / T39N, R03W, SEC. 33, NESE,S1/2SE.

T39N, R03W, SEC. 34, N1/2SW,SESW.

Cheboygan County, Advertised Price \$20,076.60, 50.3 Acres, Aspen, Hardwood.

SALE NOTE: Sale is mostly operable upland except for Payment Unit 1, which is low ground. Good volume of Red Maple sawlogs in Payment Unit 4. No extensions will be granted on this contract.

Access may be through private or other public land.

BID INSTRUCTIONS (VER. 10/10/2022):

1. Scheduled Bid Location, Date, and Time (2/11)

Bids must be received by the Unit Manager, GAYLORD OFFICE, 1732 West M 32, Gaylord, MI 49735, no later than 9:00 a.m. (local time) on May 13, 2025. For further information concerning this sale, contact Lucas Merrick at 989-732-3541 extension .

2. Bidder's Qualifications (10/22)

If all or part of a timber sale was prepared by a private contractor, the contractor and that contractor's company are not permitted to bid on the timber sale. A person must be 18 years of age or older to purchase timber. Permanent employees of the Department of Natural Resources or members of their immediate household may not bid. Former employees, in the permanent or seasonal class, may not bid until 3 months after the last day of active duty. Bids will not be accepted from individuals or companies appearing on the DNR/FRD No-Bid List. This list contains the names of purchasers who previously failed to execute a contract within 21-days or who have a history of poor performance.

3. Preparation of Sealed Bids (5/16)

Bid Forms may be completed online thru Michigan DNR Timber Sale Online Bidding (OLB) at www.michigan.gov/timberbidding or by completing the hardcopy Bid Form found in the Timber Sale Prospectus . Hardcopy Bid Forms shall be manually signed in ink. Registration in OLB is considered your 'signature' for all bids submitted thru that system. Bid prices must be entered for each species and product in the Bid Price column for all material subject to bidding and all fill-in blanks must be completed. If erasures or other changes appear on the hardcopy Bid Form, each erasure or change must be initialed by the person signing the bid.

4. Submission of Sealed Bids (5/16)

Bid forms may be obtained from the Unit Manager or thru OLB. Bids may be submitted hardcopy or thru OLB. All hardcopy bids must be submitted on the bid form and in an envelope clearly identified as described in this section. NOTE: Only one bid form per bid envelope. Sealed bids must be submitted to the Unit office designated in the prospectus and must be submitted at or prior to the time established in the prospectus. The envelope should show on the outside (a) the sale name or number and (b) the date and time of bid opening, as shown in the prospectus. Bids received after the time specified in the sale prospectus are late bids and will be rejected.

It is possible for a bidder to submit multiple bids on a single sale. For example, a bid may be submitted hardcopy and a bid may be submitted thru OLB. Or, two bidders from the same company could both submit bids on the same sale. If this were to happen, the State would accept all bids received and award the contract accordingly. All bidding and contractual requirements would apply to all bids received.

5. Public Opening of Sealed Bids (7/16)

If conditions permit, the sealed bids will be publicly opened and posted at the time and place set in the prospectus.

If a bidder, present at a bid opening, has submitted bids on more than one sale, that bidder may withdraw their unopened bid envelopes or announce the withdrawal of their online bid after being declared the successful bidder on one sale.

6. Award of Contract (1/11)

Award of the contract will be made to the Bidder whose bid, conforming to the prospectus, is most advantageous to the State of Michigan on the basis of total value at rates bid for the estimated quantities. The State reserves the right to reject any bid or waive any minor irregularity in bids received. A written award mailed (or otherwise furnished) to the successful Bidder shall be deemed to result in a binding contract without further action by either party.

7. Down Payment (1/11)

The Bidder to whom award is made must make a down payment within 21 days of the sale award. The amount of the down payment will be calculated as shown in the Bond and Payment Schedule of this prospectus. Only cash may be used to meet this requirement.

8. Performance Security (1/11)

As guarantee of faithful performance, a cash bond, certificate of deposit, surety bond or irrevocable letter of credit (LOC) is required within 21 days of the sale award. The amount of the performance security is shown in the Bond and

Payment Schedule of this prospectus. If an LOC or surety is used, the coverage must extend for at least 6 months beyond the contract expiration.

9. Worker's Compensation (10/22)

Purchaser shall obtain worker's compensation insurance to cover claims under Michigan's Worker's Disability Compensation Act of 1969 or similar employee benefit act of any other state applicable to an employee. Verification of Worker's Disability Compensation Act Compliance must be completed and submitted within 21 days of contract award and prior to the issuance of the timber sale contract. In addition, if applicable, Notice of Exclusion or Certificate of Insurance must also be submitted.

10. Timber Sale Contract (10/22)

Additional conditions and requirements common to all timber sales are listed on the timber sale contract (R4031) and are available on line at www.michigan.gov/timber. Contact the Unit Manager for additional information or a sample contract. Within 21 days of the date of the award letter, the bidder must sign the contract and provide the required down payment, performance security, and verification of worker's disability compensation. The down payment and performance security shall be in accordance with the provisions of the timber sale contract, in the sums stated in this prospectus. If these actions are not taken, then the Bidder, the Bidder's corporation, and the corporation's principals may not be permitted to bid on State timber sales for a period of 3 months after the first offense, 6 months after the second offense, and 1 year after the third offense. An offense will only be counted against the Bidder for 5 years. In addition, the Bidder certifies that if awarded this contract, the Bidder will complete the timber sale contract in accordance with its terms and any modifications thereof including requirements to purchase, cut, and remove the included timber by the expiration date.

Payment Unit values in the State Forest Timber Sale Contract are calculated based on the advertised value of the Payment Unit as a percentage of the total advertised value of the contract. The advertised value of each Payment Unit is given in the Description of Timber by Payment Unit table on the Timber Sale Information page. For example, if the value of Payment Unit 1 is advertised as \$1,500 and the total Timber Sale value is advertised as \$10,000, the contract price for Payment Unit 1 will be 15% of the total bid price ($\$1,500/\$10,000 * 100$).

11. Disclaimer of Estimates and Bidder's Warranty of Inspection (10/22)

Before submitting this bid, the Bidder is advised and cautioned to inspect the sale area, review the requirements of the sale contract, and take other steps as may be reasonably necessary to ascertain the location, estimated volumes, construction estimates, and operating costs of the proposed sale. Failure to do so will not relieve the Bidder from responsibility for completing the contract.

The Bidder warrants that this bid is submitted solely on the basis of the Bidder's examination and inspection of the quality and quantity of the timber offered for sale and the Bidder's opinion of the value thereof and the costs of recovery. No reliance should be placed on the State of Michigan's estimates of timber quality, quantity or costs of recovery. Bidder further acknowledges that the State of Michigan: (i) expressly disclaims any warranty of fitness of timber for any purpose; (ii) offers this timber as is without any warranty of quality (merchantability) or quantity and (iii) expressly disclaims any warranty as to the quantity or quality of timber sold.

12. Certification and Chain-of-Custody (10/22)

Unless otherwise indicated in the contract under section 7 – Other Conditions of the Sale Specific Conditions & Requirements, the area encompassed by this timber sale is certified to the standards of the Forest Stewardship Council (FSC) - Certificate #SCS-FM/COC-00090N and the Sustainable Forestry Initiative (SFI) - Certificate #NSF-SFIS-5Y031-SF5. Forest products from this sale may be delivered to the mill as "FSC 100% and / or SFI certified" as long as the contractor hauling the forest products is chain-of-custody (COC) certified or covered under a COC certificate from the destination mill. The purchaser is responsible for maintaining COC after leaving the sale area.

13. Good Neighbor Authority (GNA) Requirements (10/22)

If the name of this timber sales contains the acronym GNA, it is authorized by the Good Neighbor Authority (GNA) and covered by various agreements between the U.S. Forest Service and the State. The timber sale occurs on federal land and the following conditions apply:

GNA contracts on US Forest Service land will not be awarded to purchasers on the Federal list of excluded parties. The System for Award Management (SAM) will be checked for active excluded parties prior to award of contract. In

addition, the Bidder to whom award is made must complete an Assurance Regarding Felony Conviction or Tax Delinquent Status for Corporate Applicants (AD-3031).

14. Good Neighbor Authority (GNA) Requirements, con't (10/22)

Bidder certifies, by signing this bid form, that to the best of Bidder's knowledge that the following representations are accurate and complete.

- a. That the Bidder and its principals are not presently debarred, suspended, proposed for debarment, declared ineligible, or voluntary excluded from timber sales (covered transactions) by any Federal department or agency.
- b. That the Bidder and its principals have not within a 3-year period preceding this bid been convicted of or had a civil judgment rendered against them for commission of fraud or a criminal offense in connection with obtaining , attempting to obtain, or performing a public (Federal, State, or local) transaction or contract under a public transaction; violation of Federal or State antitrust statutes or commission of embezzlement, theft, forgery, bribery, falsification or destruction of records, making false statements, or receiving stolen property.
- c. That the Bidder and its principals are not presently indicted for or otherwise criminally or civilly charged by a governmental entity (Federal, State, or local) with commission of any of the offenses enumerated in paragraph b of this certification.
- d. That the Bidder and its principals have not within a 3-year period preceding this bid had one or more public transactions (Federal, State, or local) terminated for breach or default of a timber or forest product contract.

Bidders that cannot certify this requirement, in whole or in part, shall submit an explanation with their bid.

Scott Bowen
Director

TIMBER SALE INFORMATION

Big Rock Beaver Hut Hardwoods (52-006-24)
T30N, R06W, SEC. 16; T30N, R06W, SEC. 21.
Antrim County (Advertised Price \$214,423.30)

SALE NOTE: This sale is a 4 year contract with no extensions. This sale is located north of Alba Hwy 0.3 miles. Access on this sale will require the use of timber/composite mats. Seasonal timing restrictions on Payment Unit 2 and frozen or dry conditions required on Payment Unit 4.

A timber sale contract for this lump sum, sealed bid timber sale will be awarded to the responsible bidder offering the highest sealed bid price. All units of volume listed below were estimated using the Inventory Manager computer program and the new Michigan taper model. Bids must be at or above the following advertised price for each product and species:

<u>PRODUCTS & SPECIES</u>	<u>ESTIMATED UNITS*</u>	<u>ADVERTISED PRICE</u>
Sawtimber		
B. T. Aspen	23.9 MBF	\$ 45.00 / MBF
Basswood	532.9 MBF	\$ 42.00 / MBF
Beech	12.4 MBF	\$ 59.00 / MBF
Black Cherry	57.4 MBF	\$ 144.00 / MBF
Quaking Aspen	22.0 MBF	\$ 45.00 / MBF
Red Maple	93.3 MBF	\$ 89.00 / MBF
Sugar Maple	756.7 MBF	\$ 189.00 / MBF
White Spruce	24.7 MBF	\$ 47.00 / MBF
Pulpwood		
Basswood	421 Cords	\$ 7.35 / Cord
Mixed Aspen	162 Cords	\$ 11.90 / Cord
Mixed Hardwood	384 Cords	\$ 12.00 / Cord
Sugar Maple	1,520 Cords	\$ 12.00 / Cord
White Spruce	81 Cords	\$ 7.75 / Cord

* The total volume is statistically estimated within plus (+) or minus (-) 11.12 percent. There are an estimated 6,147 cords on this timber sale, plus or minus 684 cords at the 95% confidence level. The estimated units are final and not subject to adjustment. Prospective bidders are urged to examine this timber and to make their own estimates of quantity and quality.

BOND AND PAYMENT SCHEDULE:

1. A bond in the amount of \$10,721.00 to insure faithful performance of the conditions of the contract will be deposited by the successful bidder within 21 days of the sale award.
2. Cutting in any sale or unit without the required advance payment would be considered a trespass.
3. Total payment must be paid in advance or according to the following schedule :
 - (a) Ten percent (10%) of the sale value must be paid within 21 days of the sale award.
 - (b) The 10% down payment will be credited towards the first unit cut.
 - (c) Payment for each of the following units must be made before cutting begins in that unit:

<u>PAYMENT UNIT NUMBER</u>	<u>PERCENT OF TOTAL SALE VALUE</u>
01	85.2%
02	10.0%
03	2.9%
04	1.9%

4. If no cutting takes place, the 10% down payment will not be refunded.
5. Operations on the contract issued will terminate on 06/30/2029.

SALE STATISTICS

Volumes were calculated in cubic feet using the Michigan taper model. Cubic foot volume includes all wood inside bark for the product indicated. For display purposes, cubic feet were converted to cords and MBF using a simple conversion factor, e.g. 79 cubic feet per cord and 185 cubic feet per MBF. The cubic foot volumes are precise; the cords and MBF volumes are not. Cubic foot volume cannot be directly converted to cords or boards with precision.

SALE VOLUMES

The total estimated sale volume may not equal the sum of the species/products due to the nature of statistical calculations associated with double sampling methodology.

VOLUME			STATISTICAL RANGE IN CORDS	
TOTAL CUBIC FEET	TOTAL CORDS	PERCENT ERROR	MINIMUM	MAXIMUM
485,618	6,147	11.12%	5,463	6,831

VDU VOLUMES

A VDU is a Volume Determination Unit. Volumes and their associated statistics are calculated at the VDU level and summarized to the sale level. There is often a one to one relationship between a VDU and a Payment Unit, but not always, depending on the cruise design. Refer to the VDU TO PAYMENT UNIT table.

	VOLUME			RANGE IN CORDS	
VDU	TOTAL CUBIC FEET	TOTAL CORDS	PERCENT ERROR	MINIMUM	MAXIMUM
21	24,269	307	36.84%	194	420
22	436,274	5,522	11.85%	4,868	6,177
23	25,074	317	56.11%	139	495
TOTAL:	485,618	6,147		5,202	7,092

VDU TO PAYMENT UNIT

When a VDU is associated with more than one Payment Unit (PU), the VDU volumes are assigned to the PU based on acres of the VDU within the PU.

VDU	VDU ACRES	PU	PU ACRES
21	15.1	3	15.1
22	215.6	1	193.1
22	215.6	2	22.5
23	8.2	2	0.3
23	8.2	4	7.9
TOTAL:	462.7		238.9

DESCRIPTION OF TIMBER BY PAYMENT UNIT (PU)

PU	MARKET GROUP	PRODUCT	QUANTITY	UNIT	ACRES	ADVERTISE PRICE				
1	Basswood	Sawtimber	472.8	MBF	193.1	\$182,741.50				
	Beech		11.1	MBF						
	Black Cherry		51.4	MBF						
	Quaking Aspen		19.7	MBF						
	Red Maple		83.6	MBF						
	Sugar Maple		664.7	MBF						
	Basswood		Pulpwood	368			Cords			
	Mixed Aspen			6			Cords			
	Quaking Aspen			6			Cords			
	Mixed Hardwood			237			Cords			
	Beech			68			Cords			
	Black Cherry			60			Cords			
	Ironwood			3			Cords			
	Red Maple			106			Cords			
	Sugar Maple	1,271		Cords						
2	B. T. Aspen	Sawtimber		0.9	MBF	22.8	\$21,414.25			
	Basswood		55.1	MBF						
	Beech		1.3	MBF						
	Black Cherry		6.0	MBF						
	Quaking Aspen		2.3	MBF						
	Red Maple		9.7	MBF						
	Sugar Maple		77.4	MBF						
	Basswood		Pulpwood	43	Cords					
	Mixed Aspen			6	Cords					
	B. T. Aspen			5	Cords					
	Quaking Aspen			1	Cords					
	Mixed Hardwood			29	Cords					
	Beech			8	Cords					
	Black Cherry			7	Cords					
	Red Maple			14	Cords					
	Sugar Maple			149	Cords					
	3			Basswood	Sawtimber			5.0	MBF	15.1
		Sugar Maple		14.6				MBF		
White Spruce		24.7	MBF							
Basswood		Pulpwood	10	Cords						
Mixed Aspen			5	Cords						
Quaking Aspen			5	Cords						
Mixed Hardwood			43	Cords						
American Elm			2	Cords						
Black Cherry			39	Cords						
Ironwood			2	Cords						
Sugar Maple			66	Cords						
White Spruce			81	Cords						
4			B. T. Aspen	Sawtimber	23.0	MBF	7.9	\$4,068.50		
	Mixed Aspen	Pulpwood	145	Cords						
	B. T. Aspen		145	Cords						
	Mixed Hardwood		75	Cords						
	American Elm		9	Cords						
	Black Cherry		10	Cords						
	Ironwood		3	Cords						
	Red Maple		53	Cords						
	Sugar Maple		34	Cords						
	TOTAL:			1,523.3	MBF					
TOTAL:			2,568	Cords						

Sale Specific Conditions & Requirements

Sale Name: Big Rock Beaver Hut Hardwoods

Sale Number: 52-006-24 Seq#: 2

1 - Sale Area

1.2 - Boundaries

1.2.1 - Painted Boundaries (9/19)

The sale boundary and Payment Unit boundaries are marked and identified by blue, red, yellow, and green paint. Exterior sale boundary lines against private property are marked with blue paint. Exterior sale boundary lines against state are marked with red paint. Interior Payment Unit boundaries are marked with yellow paint. Interior gap boundaries are marked with green paint. Retention patches are marked with red paint; no harvesting activities may occur within these areas. The painted boundary line trees are not Included Timber and are to be protected unless marked with orange paint. Yellow painted trees designating an interior Payment Unit boundary are only to be cut when all surrounding Payment Units have been paid.

2 - Timber Specifications

2.1 - Included Timber

2.1.1 - Clearcut Unit(s) with Unmerchantable Trees (6/14)

Within Payment Unit(s) 4, cut all trees that are two (2) inches or more at DBH.

2.1.2 - Clearcut Unit(s) w/o Unmerchantable Trees (8/11)

Within Payment Unit(s) 3, cut all trees which meet minimum piece specifications in 2.2 Utilization.

2.1.3 - Cut Tree Marked Unit(s) (12/08)

Within Payment Unit(s) 1 and 2, all trees are designated for cutting when marked with orange paint above and below stump height, regardless of merchantability. Within the green painted gaps, all trees that are 6 feet or more are designated for cutting. In addition, do not cut any hemlock or trees marked with pink paint.

Special protection trees identified in accordance with condition 3.4.2, within clearcutting unit boundaries, are not Included Timber and are to be protected.

2.2 - Utilization

2.2.4 - Skidding length (2/14)

Skidding of unlimbed tops or lengths over 17 feet is not permissible unless approved by the Unit Manager or his/her representative.

2.2.7 - Uncut Designated Trees (2/04)

Liquidated damages of \$5.00 per tree will be assessed for every marked tree not cut.

3 - Payments

3.3 - Pre-measured Sales

3.3.4 - Dividing Payment Units (7/14)

Payment Unit(s) 1 may be divided at the request of the Purchaser and upon approval of the Unit Manager. Dividing Payment Units is a contract modification which requires a Timber Sale Contract Amendment.

3.4 - Damaged Timber

3.4.2 - Special Protection Trees (4/14)

The Purchaser shall not cut live or dead special protection trees within cutting units or clearings. Special protection trees are marked with pink paint. If the Purchaser's operations have cut or damaged special protection trees through carelessness, the Purchaser shall pay \$500 as fixed, agreed and liquidated damages for each special protection tree cut or damaged. Such payment does not constitute ownership of the undesignated timber.

3.4.3 - Special Protection Areas (8/11)

The Purchaser shall protect special protection areas from damage by the Purchaser's operations. Special protection areas are the retention patch surrounded by Payment Unit 2. The Purchaser shall not cut live or dead trees within special protection

areas. If the Purchaser's operations have cut or damaged special protection areas through carelessness, the Purchaser shall pay \$1000 as fixed, agreed and liquidated damages for each acre or part thereof cut or damaged. Such payment does not constitute ownership of the undesignated timber.

3.6 - Payment Unit Cutting Schedule

3.6.1 - Order of Cutting (1/09)

Payment Unit 3 shall be cut prior to Payment Units 1, 2, and 4 unless the sale is paid in full and approved by the Unit Manager or his/her representative.

4 - Transportation

4.1 - Construction

4.1.3 - Slash and Earthen Piles (8/04)

Piles or windrows of earth along roads and landings that have been widened or constructed shall be leveled. Slash from road maintenance or construction, including stumps, shall be dispersed throughout the sale.

4.1.4 - Timber Removed for Construction (3/23)

Trees cut or damaged in the process of pre-approved road, landing, or skid trail construction will be decked in an area separate from other Designated Timber and not removed until measured by the Sale Administrator. Payment will be made at contract prices or average prices, if not on the contract.

4.1.6 - Road Construction (4/24)

Construction of new roads or improvements of existing roads shall be done in such a way as to minimize the environmental and visual impacts. Merchantable trees shall be cut and utilized unless otherwise directed. Non-merchantable trees shall be severed and laid flat on the ground. Slash shall be scattered, and not left in windrows and kept a minimum of 10 feet back from the road edge. Stumps shall be set upright, not left on edge, and be moved at least 10 feet away from the road edge. Disturbed soil shall be feathered into the woods and not left in berms or windrows.

4.1.7 - Road Closure (10/11)

All new roads built into the sale must be blocked to vehicle traffic upon completion of the sale. Overgrown roads that are reopened shall be considered new roads. In general, this will require constructing a four (4') foot high berm of stumps and logs covered with earth. These roads must be rendered impassable to cars and trucks. Temporary berms may be required if no sale activity occurs for 30 or more consecutive days. Contact the Sale Administrator for specific details of design and placement.

4.1.11 - Permits (2/12)

The Purchaser will secure any necessary permits that may be required.

4.2 - Maintenance

4.2.5 - Two Wheel Drive Condition (2/04)

All existing trail roads on and adjacent to the Sale Area must be passable by two-wheel drive traffic for the duration of the sale.

5 - Operations

5.1 - Notification

5.1.1 - Pre-sale Conference (10/16)

A pre-sale conference on site between the Purchaser and Sale Administrator is required prior to beginning any operations. The Unit Manager or his/her representative must be contacted at least 5 days in advance to schedule the conference.

5.1.4 - Post-Sale Conference (10/16)

A post-sale conference on site between the Purchaser and sale administrator is required 5 days prior to the completion of active logging operations to determine clean-up and repair of landings, road edges, and the fulfillment of other contract specifications.

5.2 - Conduct of Operations

5.2.2 - Hazard Trees/Snags

5.2.2.1 - Den Trees (10/16)

Obvious hollow and/or den trees shall be protected and left standing unless they are a safety hazard.

5.2.3 - Operating Restrictions

5.2.3.1 - Operating Restrictions (9/11)

Within Payment Unit(s) 2, unless changed by written agreement, cutting, skidding, and hauling are not permitted during the period of March 15 to July 15. This restriction is for protection of a species of special concern.

5.2.3.2 - Operating Restrictions (9/11)

Within Payment Unit(s) 4, unless changed by written agreement, cutting, skidding, and hauling are limited to frozen or dry and stable conditions. This restriction is for the protection of an endangered reptile.

5.2.3.3 - Bark Slippage Restriction (3/09)

Within Payment Unit(s) 1 and 2, unless changed by written agreement, cutting and skidding are not permitted during the period of April 15 to July 15. This restriction is because of bark slippage.

5.2.3.11 - Coppice Regeneration Protection (4/10)

Timber harvesting in Payment Unit 4 must be completed before significant aspen sprouting occurs in that Payment Unit so as to minimize damage to the new regeneration. Any post harvest operations, such as chipping, must be completed before sprouting of regeneration occurs. The Unit Manager or his/her representative may cease such operations if sprouting occurs before the operation is complete.

5.2.17 - Timber Mats and Interlocking Composite Mats (5/23)

Some roads or skid trails may require extra protection such as that afforded by timber mats, interlocking composite mats, or another approved system. Approximately 60 feet of road or trail will need extra protection at locations shown on the Timber Sale Map. If available, mats may be borrowed from the DNR. A Timber Sale Contract Amendment will be used to document the Purchaser's use of the DNR's mats. Contact the Sale Administrator regarding availability and pick-up. Timber mats are available from various field offices. Composite mats are only available from the Grayling field office and the Marquette ICC. The Purchaser is responsible for picking up and hauling the mats to and from the site. The composite mats will require DNR staff onsite for installation and removal. Contact the Sale Administrator to schedule at least 30 days before desired install/removal date. All mats must be cleaned prior to drop off. This may include, but is not limited to, power washing and brushing to remove mud and debris. A charge of \$700.00 per timber mat and \$2,000.00 per composite mat will be assessed for all damaged or non-returned mats. Damage for the crane/timber mats is defined as three or more broken cants. Damage for the composite mats is defined as cracked or broken mats.

5.2.32 - Decking/Landing Restoration (9/13)

All decking and landing areas must have the surface area restored to a condition equal to or better than before. This is to ensure the proper regeneration of the stand. Wood debris, chips and "cookies" from trimmings must be removed or scattered away from landing and loading areas and may not be windrowed on the edge.

5.2.38 - No Decking Against Live Trees (2/04)

Cut products may not be decked against unmarked or designated leave trees.

5.3 - Stream Protection

5.3.1 - Operating near stream (7/04)

No tracked or wheeled vehicles shall be operated within 50 feet of Green River and its tributaries, except at an approved crossing.

5.4 - Soil Protection

5.4.1 - Rutting Restriction, General (7/16)

Operations are to cease immediately if equipment and weather conditions result in rutting of roads and/or skid trails which is 12 inches or greater in depth and 50 feet in length. The Unit Manager or his/her representative may restrict hauling and/or skidding if ruts exceed the specified depth. With the Unit Manager or his/her representative's approval, the Purchaser may return to the area when the risk of rutting has decreased.

5.4.4 - Slope Protection (9/19)

Skid trails and roads on slopes shall be water barred with slash and stumps as soon as use is complete to prevent erosion.

5.4.6 - Wet Area Protection (5/10)

No harvesting operations, including skidding and felling, are to take place within the beaver pond between Payment Unit 1 and Payment Unit 4. Care must be taken by the Purchaser to identify and avoid operating in these areas of the timber sale.

5.8 - Protection of Endangered Species

5.8.3 - Red Shoulder Hawk or Goshawk (1) (2/16)

In the event that an active red shoulder hawk or goshawk nest is found, the contract may be amended to protect the nest site until the nest is determined to be inactive. The value of the trees in this excluded area will be refunded or credited to the Purchaser. The nest will be buffered with a five-chain radius (eight acre) protection area, centered on the nest tree, in which there will be no cutting or new roads constructed. Avoid human disturbance, including loading and skidding, in the protection area.

An additional zone of five chains (ten chains centered on the active nest tree) will be established in which there is no management activity from March 15 to July 15. Limit biomass harvesting and chipping operations within this ten-chain zone, retain the maximum one-third of residues per the Woody Biomass Harvesting Guidelines (Michigan DNR 2010). Nests determined to be inactive will be protected with a one-chain no-harvest buffer.

5.8.5 - Protection of Raptor Nests (3/13)

All trees with raptor nests will be protected if found during harvesting operations. Notification will be made to the Unit Manager or his/her representative who will notify the Wildlife Biologist so an onsite evaluation and recommendation can be made, if necessary.

7 - Other Conditions

7.2 - Extensions

7.2.2 - No Extensions (3/09)

There will be no extensions granted on this contract.



TIMBER SALE MAP

This information provided by authority of Part 525, 1994 PA 451, as amended.

Sale Number

52-006-24

Date

11/13/2024

Forest Management Unit

Gaylord Mgt Unit

County

Antrim

Mapped By: Derek Nellis

Cruised By: Derek Nellis and Contractor

Scale

1:12,000

Page

1

Of

1

Township
30N

Range
06W

Section(s) and
Subdivision(s) Sec. 16 SESW,S1/2SE; Sec. 21 NW,NE,NESW,NWSE;

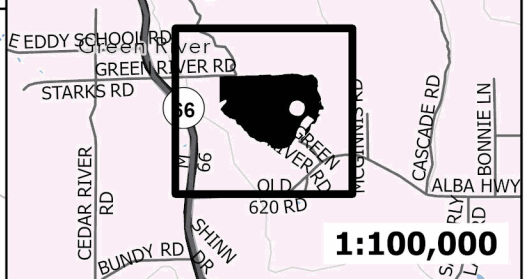
Cover Type

A = Aspen	J = Jack Pine	O = Oak	U = Upland Brush
B = Paper Birch	K = Rock	P = Lowland Poplar	UM = Upland Mix Forest
C = Cedar	L = Lowland Brush	Q = Mixed Swamp Conifer	V = Bog or Marsh
D = Treed Bog	LM = Lowland Mix Forest	R = Red Pine	W = White Pine
E = Swamp Hardwoods	M = Maple, Beech, Birch	S = Black Spruce	X = Non Stocked
F = Spruce/Fir	MC = Mixed Conifer	T = Tamarack	Y = Sand
G = Grass	MD = Mixed Deciduous	Z = Water	
H = Hemlock	N = Marsh		

Density

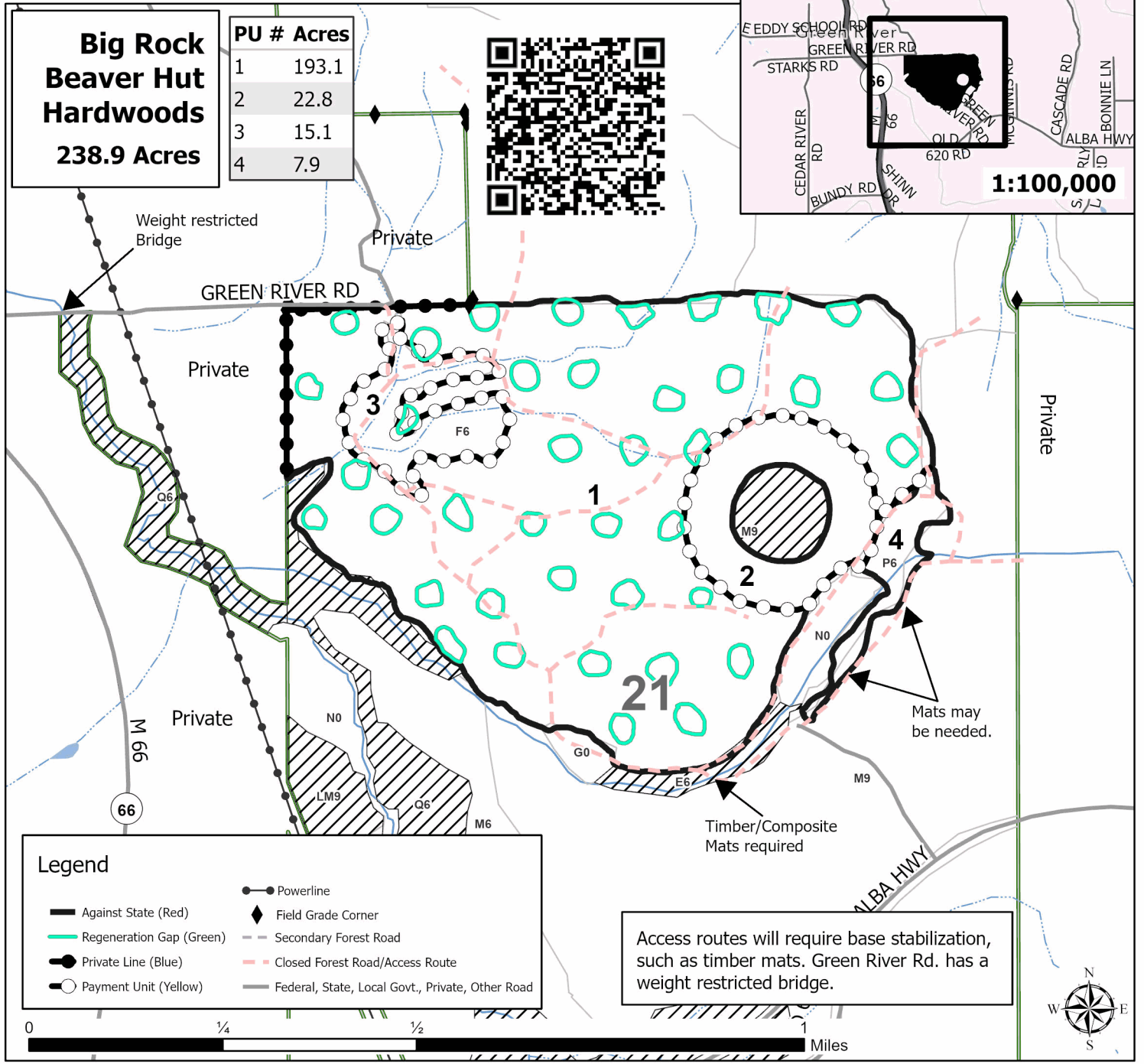
0 = Non Stocked	5 = Pole Timber Medium
1 = Seedling Sapling Poor	6 = Pole Timber Well
2 = Seedling Sapling Medium	7 = Saw Timber Poor
3 = Seedling Sapling Well	8 = Saw Timber Medium
4 = Pole Timber Poor	9 = Saw Timber Well

Locator Map



**Big Rock
Beaver Hut
Hardwoods**
238.9 Acres

PU #	Acres
1	193.1
2	22.8
3	15.1
4	7.9



Legend

- Against State (Red)
- Regeneration Gap (Green)
- Private Line (Blue)
- Payment Unit (Yellow)
- Powerline
- Field Grade Corner
- Secondary Forest Road
- Closed Forest Road/Access Route
- Federal, State, Local Govt., Private, Other Road

Access routes will require base stabilization, such as timber mats. Green River Rd. has a weight restricted bridge.

TIMBER SALE INFORMATION

Future Legacy Hardwoods (52-007-24)
T30N, R06W, SEC. 4; T30N, R06W, SEC. 5.
Antrim County (Advertised Price \$176,181.50)

SALE NOTE: This sale is a 4 year contract with no extensions. The access for this sale is located off of Graves Crossing Rd. within the Jordan River Valley. The sale is 1/2 mile down a forest access route. This route will need to be brushed and log truck access to the sale is not guaranteed.

A timber sale contract for this lump sum, sealed bid timber sale will be awarded to the responsible bidder offering the highest sealed bid price. All units of volume listed below were estimated using the Inventory Manager computer program and the new Michigan taper model. Bids must be at or above the following advertised price for each product and species:

<u>PRODUCTS & SPECIES</u>	<u>ESTIMATED UNITS*</u>	<u>ADVERTISED PRICE</u>
Sawtimber		
Basswood	529.7 MBF	\$ 53.00 / MBF
Beech	39.6 MBF	\$ 73.00 / MBF
Black Cherry	22.5 MBF	\$ 180.00 / MBF
Mixed Aspen	129.2 MBF	\$ 56.00 / MBF
Red Maple	208.9 MBF	\$ 112.00 / MBF
Sugar Maple	311.6 MBF	\$ 236.00 / MBF
Pulpwood		
Balsam Fir	92 Cords	\$ 10.80 / Cord
Basswood	503 Cords	\$ 9.20 / Cord
Mixed Aspen	528 Cords	\$ 14.85 / Cord
Mixed Hardwood	1,569 Cords	\$ 15.00 / Cord

* The total volume is statistically estimated within plus (+) or minus (-) 12.07 percent. There are an estimated 5,602 cords on this timber sale, plus or minus 677 cords at the 95% confidence level. The estimated units are final and not subject to adjustment. Prospective bidders are urged to examine this timber and to make their own estimates of quantity and quality.

BOND AND PAYMENT SCHEDULE:

- A bond in the amount of \$8,809.00 to insure faithful performance of the conditions of the contract will be deposited by the successful bidder within 21 days of the sale award.
- Cutting in any sale or unit without the required advance payment would be considered a trespass.
- Total payment must be paid in advance or according to the following schedule :
 - Ten percent (10%) of the sale value must be paid within 21 days of the sale award.
 - The 10% down payment will be credited towards the first unit cut.
 - Payment for each of the following units must be made before cutting begins in that unit:

PAYMENT UNIT NUMBER	PERCENT OF TOTAL SALE VALUE
01	78.7%
02	2.4%
03	11.6%
04	7.3%
- If no cutting takes place, the 10% down payment will not be refunded.
- Operations on the contract issued will terminate on 06/30/2029.

SALE STATISTICS

Volumes were calculated in cubic feet using the Michigan taper model. Cubic foot volume includes all wood inside bark for the product indicated. For display purposes, cubic feet were converted to cords and MBF using a simple conversion factor, e.g. 79 cubic feet per cord and 185 cubic feet per MBF. The cubic foot volumes are precise; the cords and MBF volumes are not. Cubic foot volume cannot be directly converted to cords or boards with precision.

SALE VOLUMES

The total estimated sale volume may not equal the sum of the species/products due to the nature of statistical calculations associated with double sampling methodology.

VOLUME			STATISTICAL RANGE IN CORDS	
TOTAL CUBIC FEET	TOTAL CORDS	PERCENT ERROR	MINIMUM	MAXIMUM
442,542	5,602	12.07%	4,925	6,278

VDU VOLUMES

A VDU is a Volume Determination Unit. Volumes and their associated statistics are calculated at the VDU level and summarized to the sale level. There is often a one to one relationship between a VDU and a Payment Unit, but not always, depending on the cruise design. Refer to the VDU TO PAYMENT UNIT table.

	VOLUME			RANGE IN CORDS	
VDU	TOTAL CUBIC FEET	TOTAL CORDS	PERCENT ERROR	MINIMUM	MAXIMUM
1	16,015	203	39.18%	123	282
3	56,722	718	37.14%	451	985
219	63,414	803	25.34%	599	1,006
220	306,391	3,878	15.16%	3,290	4,466
TOTAL:	442,542	5,602		4,464	6,739

VDU TO PAYMENT UNIT

When a VDU is associated with more than one Payment Unit (PU), the VDU volumes are assigned to the PU based on acres of the VDU within the PU.

VDU	VDU ACRES	PU	PU ACRES
1	15.2	2	15.2
3	25.3	4	25.3
219	25.9	3	25.9
220	151.2	1	151.2
TOTAL:	217.6		217.6

DESCRIPTION OF TIMBER BY PAYMENT UNIT (PU)

PU	MARKET GROUP	PRODUCT	QUANTITY	UNIT	ACRES	ADVERTISE PRICE
1	Basswood	Sawtimber	461.5	MBF	151.2	\$138,755.30
	Beech		39.6	MBF		
	Black Cherry		6.0	MBF		
	Mixed Aspen		67.2	MBF		
	<i>Quaking Aspen</i>		67.2	<i>MBF</i>		
	Red Maple	Pulpwood	175.8	MBF		
	Sugar Maple		286.1	MBF		
	Basswood		415	Cords		
	Mixed Aspen		36	Cords		
	<i>Quaking Aspen</i>		36	<i>Cords</i>		
	Mixed Hardwood		1,000	Cords		
	<i>Beech</i>		30	<i>Cords</i>		
	<i>Black Cherry</i>		3	<i>Cords</i>		
	<i>Ironwood</i>		21	<i>Cords</i>		
	<i>Red Maple</i>		320	<i>Cords</i>		
	<i>Sugar Maple</i>		626	<i>Cords</i>		
2	Basswood	Sawtimber	0.5	MBF	15.2	\$4,238.70
	Black Cherry		0.6	MBF		
	Mixed Aspen		5.2	MBF		
	<i>B. T. Aspen</i>		5.2	<i>MBF</i>		
	Red Maple	Pulpwood	3.6	MBF		
	Sugar Maple		3.7	MBF		
	Basswood		2	Cords		
	Mixed Aspen		112	Cords		
	<i>B. T. Aspen</i>		72	<i>Cords</i>		
	<i>Quaking Aspen</i>		40	<i>Cords</i>		
	Mixed Hardwood		57	Cords		
	<i>Black Cherry</i>		8	<i>Cords</i>		
	<i>Ironwood</i>		4	<i>Cords</i>		
	<i>Red Maple</i>		38	<i>Cords</i>		
	<i>Sugar Maple</i>		7	<i>Cords</i>		
3	Basswood	Sawtimber	67.7	MBF	25.9	\$20,399.15
	Black Cherry		11.4	MBF		
	Mixed Aspen		12.5	MBF		
	<i>Quaking Aspen</i>		12.5	<i>MBF</i>		
	Red Maple		18.4	MBF		
	Sugar Maple		21.8	MBF		
	Balsam Fir	Pulpwood	6	Cords		
	<i>Balsam Fir</i>		6	<i>Cords</i>		
	Basswood		86	Cords		
	Mixed Aspen		17	Cords		
	<i>B. T. Aspen</i>		8	<i>Cords</i>		
	<i>Quaking Aspen</i>		9	<i>Cords</i>		
	Mixed Hardwood		383	Cords		
	<i>American Elm</i>	<i>Sawtimber</i> <i>Pulpwood</i>	3.6	<i>MBF</i>		
	<i>American Elm</i>		43	<i>Cords</i>		
	<i>Black Cherry</i>		56	<i>Cords</i>		
	<i>Ironwood</i>		16	<i>Cords</i>		
	<i>Red Maple</i>		102	<i>Cords</i>		
	<i>Sugar Maple</i>		159	<i>Cords</i>		
4	Black Cherry	Sawtimber	4.5	MBF	25.3	\$12,788.35
	Mixed Aspen		44.3	MBF		
	<i>B. T. Aspen</i>		24.2	<i>MBF</i>		
	<i>Quaking Aspen</i>		20.1	<i>MBF</i>		
	Red Maple	Pulpwood	11.1	MBF		
	Balsam Fir		86	Cords		

DESCRIPTION OF TIMBER BY PAYMENT UNIT (PU), CON'T

PU	MARKET GROUP	PRODUCT	QUANTITY	UNIT	ACRES	ADVERTISE PRICE
4 con't	<i>Balsam Fir</i>	<i>Sawtimber</i>	1.5	<i>MBF</i>		
	<i>White Spruce</i>		2.8	<i>MBF</i>		
	<i>Balsam Fir</i>	<i>Pulpwood</i>	76	<i>Cords</i>		
	<i>White Spruce</i>		1	<i>Cords</i>		
	Mixed Aspen		363	<i>Cords</i>		
	<i>B. T. Aspen</i>		272	<i>Cords</i>		
	<i>Quaking Aspen</i>		91	<i>Cords</i>		
	Mixed Hardwood		129	<i>Cords</i>		
	<i>American Elm</i>		10	<i>Cords</i>		
	<i>Black Cherry</i>		33	<i>Cords</i>		
	<i>Ironwood</i>		3	<i>Cords</i>		
	<i>Red Maple</i>		76	<i>Cords</i>		
	<i>Sugar Maple</i>		7	<i>Cords</i>		
TOTAL:			1,241.5	MBF		
TOTAL:			2,692	Cords		

Sale Specific Conditions & Requirements

Sale Name: Future Legacy Hardwoods

Sale Number: 52-007-24 Seq#: 2

1 - Sale Area

1.2 - Boundaries

1.2.1 - Painted Boundaries (9/19)

The sale boundary and Payment Unit boundaries are marked and identified by red, yellow, and green paint. Exterior sale boundary lines against state are marked with red paint. Interior Payment Unit boundaries are marked with yellow paint. Interior Gap boundaries are marked with green paint. Retention patches are marked with red paint; no harvesting activities may occur within these areas. The painted boundary line trees are not Included Timber and are to be protected unless marked with orange paint. Yellow painted trees designating an interior Payment Unit boundary are only to be cut when all surrounding Payment Units have been paid.

2 - Timber Specifications

2.1 - Included Timber

2.1.1 - Clearcut Unit(s) with Unmerchantable Trees (6/14)

Within Payment Unit(s) 2-4, cut all trees that are two (2) inches or more at DBH, except do not cut trees marked with pink paint. In addition, within Payment Units 2 and 4, do not cut any white pine.

Special protection trees identified in accordance with condition 3.4.2, within clearcutting unit boundaries, are not Included Timber and are to be protected.

2.1.3 - Cut Tree Marked Unit(s) (12/08)

Within Payment Unit(s) 1, all trees are designated for cutting when marked with orange paint above and below stump height, regardless of merchantability. Within green marked gaps, all trees that are 6 feet or more are designated timber. In addition, do not cut trees marked with pink paint.

Special protection trees identified in accordance with condition 3.4.2, within clearcutting boundaries, are not Included Timber and are to be protected.

2.2 - Utilization

2.2.4 - Skidding length (2/14)

Skidding of unlimbed tops or lengths over 17 feet is not permissible within Payment Unit 1, unless approved by the Unit Manager or his/her representative.

3 - Payments

3.3 - Pre-measured Sales

3.3.4 - Dividing Payment Units (7/14)

Payment Unit(s) 1 may be divided at the request of the Purchaser and upon approval of the Unit Manager. Dividing Payment Units is a contract modification which requires a Timber Sale Contract Amendment.

3.4 - Damaged Timber

3.4.2 - Special Protection Trees (4/14)

The Purchaser shall not cut live or dead special protection trees within cutting units or clearings. Special protection trees are marked with pink paint. If the Purchaser's operations have cut or damaged special protection trees through carelessness, the Purchaser shall pay \$500.00 as fixed, agreed and liquidated damages for each special protection tree cut or damaged. Such payment does not constitute ownership of the undesignated timber.

4 - Transportation

4.1 - Construction

4.1.3 - Slash and Earthen Piles (8/04)

Piles or windrows of earth along roads and landings that have been widened or constructed shall be leveled. Slash from road maintenance or construction, including stumps, shall be dispersed throughout the sale.

4.1.4 - Timber Removed for Construction (3/23)

Trees cut or damaged in the process of pre-approved road, landing, or skid trail construction will be decked in an area separate from other Designated Timber and not removed until measured by the Sale Administrator. Payment will be made at contract prices or average prices, if not on the contract.

4.1.6 - Road Construction (4/24)

Construction of new roads or improvements of existing roads shall be done in such a way as to minimize the environmental and visual impacts. Merchantable trees shall be cut and utilized unless otherwise directed. Non-merchantable trees shall be severed and laid flat on the ground. Slash shall be scattered, and not left in windrows and kept a minimum of 10 feet back from the road edge. Stumps shall be set upright, not left on edge, and be moved at least 10 feet away from the road edge. Disturbed soil shall be feathered into the woods and not left in berms or windrows.

4.1.7 - Road Closure (10/11)

All new roads built into the sale must be blocked to vehicle traffic upon completion of the sale. Overgrown roads that are reopened shall be considered new roads. In general, this will require constructing a four (4') foot high berm of stumps and logs covered with earth. These roads must be rendered impassable to cars and trucks. Temporary berms may be required if no sale activity occurs for 30 or more consecutive days. Contact the Sale Administrator for specific details of design and placement.

4.1.11 - Permits (2/12)

The Purchaser will secure any necessary permits that may be required.

4.2 - Maintenance

4.2.4 - Grading (10/16)

For completion of the sale, state forest roads must be graded. In general, this will require a road grader or bulldozer to shape up the roads after forest products have been hauled off site. This includes cleaning of drainage areas, grading, crowning and filling with gravel, if necessary. The grading equipment to be used must be approved by the Unit Manager or his/her representative.

4.4 - Access

4.4.3 - Access gate (12/08)

The access gate must be locked at the completion of each day unless otherwise approved by the Unit Manager or his/her representative.

5 - Operations

5.1 - Notification

5.1.1 - Pre-sale Conference (10/16)

A pre-sale conference on site between the Purchaser and Sale Administrator is required prior to beginning any operations. The Unit Manager or his/her representative must be contacted at least 5 days in advance to schedule the conference.

5.1.4 - Post-Sale Conference (10/16)

A post-sale conference on site between the Purchaser and sale administrator is required 5 days prior to the completion of active logging operations to determine clean-up and repair of landings, road edges, and the fulfillment of other contract specifications.

5.2 - Conduct of Operations

5.2.2 - Hazard Trees/Snags

5.2.2.1 - Den Trees (10/16)

Obvious hollow and/or den trees shall be protected and left standing unless they are a safety hazard.

5.2.3 - Operating Restrictions

5.2.3.3 - Bark Slippage Restriction (3/09)

Within Payment Unit(s) 1, unless changed by written agreement, cutting and skidding are not permitted during the period of April 15 to July 15. This restriction is because of bark slippage.

5.2.3.11 - Coppice Regeneration Protection (4/10)

Timber harvesting in any Payment Unit must be completed before significant aspen sprouting occurs in that Payment Unit so as to minimize damage to the new regeneration. Any post harvest operations, such as chipping, must be completed before sprouting of regeneration occurs. If it is anticipated that chipping will be delayed, then tops shall be carried to one central location or left unchipped. The Unit Manager or his/her representative may cease such operations if sprouting occurs before the operation is complete.

5.2.29 - Shrub Protection (1/20)

Do not cut or damage hawthorn, witch-hazel, dogwood or junberry. These woody-shrub plants are highly beneficial to various wildlife species.

5.2.32 - Decking/Landing Restoration (9/13)

All decking and landing areas must have the surface area restored to a condition equal to or better than before. This is to ensure the proper regeneration of the stand. Wood debris, chips and "cookies" from trimmings must be removed or scattered away from landing and loading areas and may not be windrowed on the edge.

5.2.38 - No Decking Against Live Trees (2/04)

Cut products may not be decked against unmarked or designated leave trees.

5.4 - Soil Protection

5.4.1 - Rutting Restriction, General (7/16)

Operations are to cease immediately if equipment and weather conditions result in rutting of roads and/or skid trails which is 12 inches or greater in depth and 50 feet in length. The Unit Manager or his/her representative may restrict hauling and/or skidding if ruts exceed the specified depth. With the Unit Manager or his/her representative's approval, the Purchaser may return to the area when the risk of rutting has decreased.

5.4.4 - Slope Protection (9/19)

Skid trails and roads on slopes shall be water barred with slash and/or broad base dips at the direction of the Sale Administrator.

5.4.6 - Wet Area Protection (5/10)

No harvesting operations, including skidding and felling, are to take place within the ephemeral pond included in retention, or within the Pinney Bridge Swamp along the southern boundary of Payment Unit 4. When harvesting occurs, there should be no disturbance to the vernal pond depression. All equipment, trees and tops should be kept out of this area. Within 100 feet of the pond and swamp, equipment should only be used when the soil is in a dry or frozen condition. Care must be taken by the Purchaser to identify and avoid operating in these areas of the timber sale.

5.7 - Protection of Historical Sites

5.7.1 - Historical Sites (7/12)

The Purchaser shall not cut live or dead trees or operate equipment within historical sites. Historical sites are excluded from the Sale Area, however, they shall not be utilized for any operations. The Purchaser shall protect historical sites from damage by the Purchaser's operations. If Purchaser's operations have cut or damaged historical sites through carelessness, the Purchaser shall pay \$1000.00 as fixed, agreed and liquidated damages for each acre or part thereof cut or damaged.

5.7.2 - Potential Historical Site(s) (9/06)

The State Historic Preservation Office has identified the potential for a historic site within the boundary of this timber sale. Note that if the site is discovered during operations, General Condition and Requirement 5.7 - Protection of Historical Sites will apply.

5.8 - Protection of Endangered Species

5.8.5 - Protection of Raptor Nests (3/13)

All trees with raptor nests will be protected if found during harvesting operations. Notification will be made to the Unit Manager or his/her representative who will notify the Wildlife Biologist so an onsite evaluation and recommendation can be made, if necessary.

6 - Safety and Fire Prevention

6.2 - Signing

6.2.1 - Road Posting (10/20)

The Purchaser is responsible for posting and maintaining caution signs on Highway 66 and Graves Crossing Road prior to beginning operations. The road must be posted at appropriate distances from the Sale Area to warn of logging activity and truck traffic. Signs must be removed when harvest operations are suspended or completed. The Purchaser will provide these signs.

7 - Other Conditions

7.2 - Extensions

7.2.2 - No Extensions (3/09)

There will be no extensions granted on this contract.

**TIMBER SALE MAP**

This information provided by authority of Part 525, 1994 PA 451, as amended.

Sale Number

52-007-24

Date

11/13/2024

Forest Management Unit

Gaylord Mgt Unit

County

Antrim

Mapped By: Derek Nellis

Cruised By: Derek Nellis and Contractor

Scale

1:15,000

Page

1

Of

1

Township
30NRange
06W

Section(s) and

Subdivision(s) Sec. 4 NW,W1/2NE,SW,NWSE; Sec. 5 E1/2NE,NESE;

Cover Type

A = Aspen	J = Jack Pine	O = Oak	U = Upland Brush
B = Paper Birch	K = Rock	P = Lowland Poplar	UM = Upland Mix Forest
C = Cedar	L = Lowland Brush	Q = Mixed Swamp Conifer	V = Bog or Marsh
D = Treed Bog	LM = Lowland Mix Forest	R = Red Pine	W = White Pine
E = Swamp Hardwoods	M = Maple, Beech, Birch	S = Black Spruce	X = Non Stocked
F = Spruce/Fir	MC = Mixed Conifer	T = Tamarack	Y = Sand
G = Grass	MD = Mixed Deciduous	Z = Water	
H = Hemlock	N = Marsh		

Density

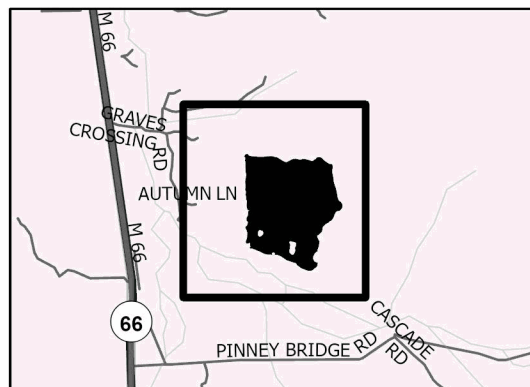
0 = Non Stocked	5 = Pole Timber Medium
1 = Seedling Sapling Poor	6 = Pole Timber Well
2 = Seedling Sapling Medium	7 = Saw Timber Poor
3 = Seedling Sapling Well	8 = Saw Timber Medium
4 = Pole Timber Poor	9 = Saw Timber Well

PU # Acres

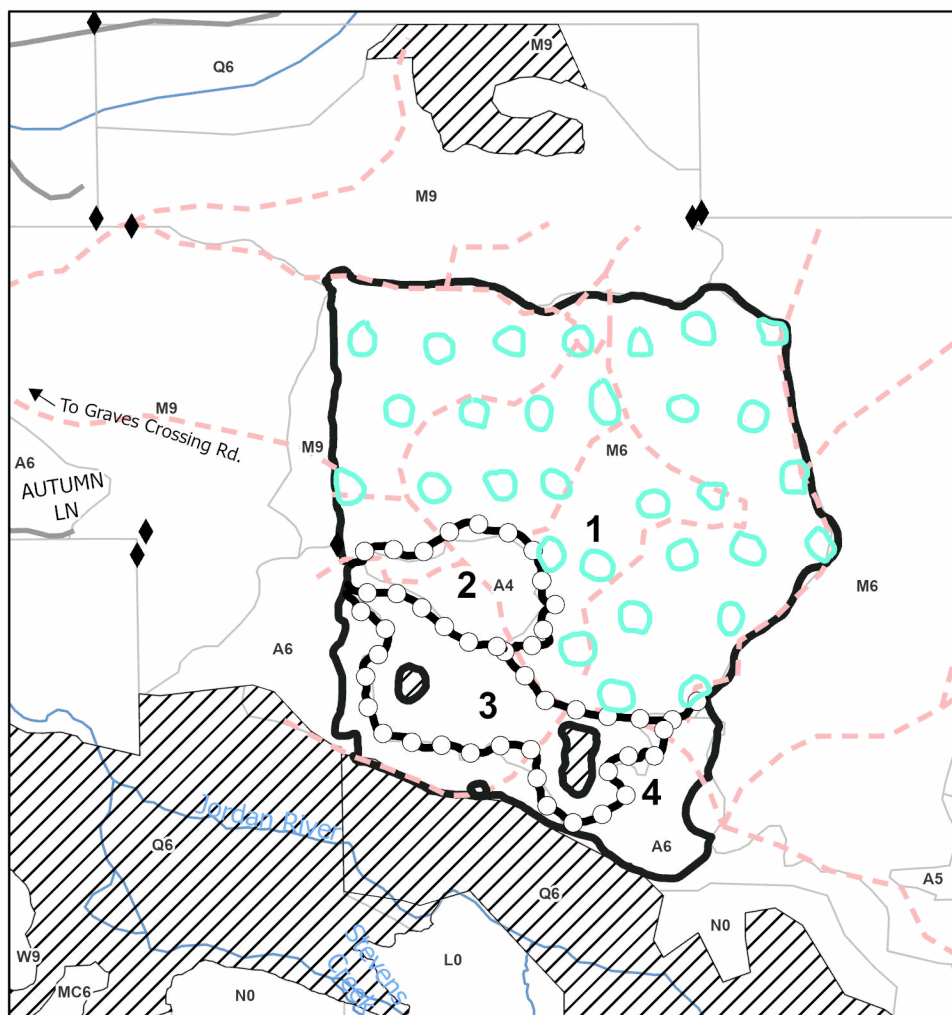
1	151.2
2	15.2
3	25.9
4	25.3

**Future
Legacy
Hardwoods****217.6 Acres**

0 0.23 0.45 0.9 Miles

**Locator Map 1:78,100****Legend**

- Against State (Red)
- Regeneration Gap (Green)
- Payment Unit (Yellow)
- Stand
- ▨ Retention Areas
- Perennial River
- ◆ Field Grade Corner
- - - Closed Forest Road/Access Route



TIMBER SALE INFORMATION

Mahovlich Aspen (52-103-24)

T34N, R04W, SEC. 13; T34N, R04W, SEC. 23; T34N, R04W, SEC. 24.

Emmet County (Advertised Price \$21,249.15)

SALE NOTE: Motorcycle trail located along harvest boundary in Payment Unit 1. Also, utility ROW present adjacent to Payment Unit 1. 4-year contract. No extensions will be granted,

A recreation site such as a trail, pathway, or campground is within the sale area or the vicinity. Certain restrictions/specifications may be applicable including time restrictions.

A timber sale contract for this lump sum, sealed bid timber sale will be awarded to the responsible bidder offering the highest sealed bid price. All units of volume listed below were estimated using the Inventory Manager computer program and the new Michigan taper model. Bids must be at or above the following advertised price for each product and species:

<u>PRODUCTS & SPECIES</u>	<u>ESTIMATED UNITS*</u>	<u>ADVERTISED PRICE</u>
Sawtimber		
Black Cherry	7.3 MBF	\$ 168.00 / MBF
Mixed Aspen	133.5 MBF	\$ 53.00 / MBF
Red Maple	1.2 MBF	\$ 104.00 / MBF
Sugar Maple	21.4 MBF	\$ 220.00 / MBF
White Ash	1.1 MBF	\$ 64.00 / MBF
Yellow Birch	2.6 MBF	\$ 77.00 / MBF
Pulpwood		
Mixed Aspen	441 Cords	\$ 13.85 / Cord
Mixed Hardwood	124 Cords	\$ 14.00 / Cord

* The total volume is statistically estimated within plus (+) or minus (-) 34.93 percent. There are an estimated 955 cords on this timber sale, plus or minus 334 cords at the 95% confidence level. The estimated units are final and not subject to adjustment. Prospective bidders are urged to examine this timber and to make their own estimates of quantity and quality.

BOND AND PAYMENT SCHEDULE:

- A bond in the amount of \$1,062.00 to insure faithful performance of the conditions of the contract will be deposited by the successful bidder within 21 days of the sale award.
- Cutting in any sale or unit without the required advance payment would be considered a trespass.
- Total payment must be paid in advance or according to the following schedule :
 - Ten percent (10%) of the sale value must be paid within 21 days of the sale award.
 - The 10% down payment will be credited towards the first unit cut.
 - Payment for each of the following units must be made before cutting begins in that unit:

PAYMENT UNIT NUMBER	PERCENT OF TOTAL SALE VALUE
01	74.3%
02	25.7%
- If no cutting takes place, the 10% down payment will not be refunded.
- Operations on the contract issued will terminate on 06/30/2029.

SALE STATISTICS

Volumes were calculated in cubic feet using the Michigan taper model. Cubic foot volume includes all wood inside bark for the product indicated. For display purposes, cubic feet were converted to cords and MBF using a simple conversion factor, e.g. 79 cubic feet per cord and 185 cubic feet per MBF. The cubic foot volumes are precise; the cords and MBF volumes are not. Cubic foot volume cannot be directly converted to cords or boards with precision.

SALE VOLUMES

The total estimated sale volume may not equal the sum of the species/products due to the nature of statistical calculations associated with double sampling methodology.

VOLUME			STATISTICAL RANGE IN CORDS	
TOTAL CUBIC FEET	TOTAL CORDS	PERCENT ERROR	MINIMUM	MAXIMUM
75,453	955	34.93%	621	1,289

VDU VOLUMES

A VDU is a Volume Determination Unit. Volumes and their associated statistics are calculated at the VDU level and summarized to the sale level. There is often a one to one relationship between a VDU and a Payment Unit, but not always, depending on the cruise design. Refer to the VDU TO PAYMENT UNIT table.

VDU	VOLUME		PERCENT ERROR	RANGE IN CORDS	
	TOTAL CUBIC FEET	TOTAL CORDS		MINIMUM	MAXIMUM
18	49,426	626	41.29%	367	884
30	26,027	329	69.25%	101	558
TOTAL:	75,453	955		469	1,442

VDU TO PAYMENT UNIT

When a VDU is associated with more than one Payment Unit (PU), the VDU volumes are assigned to the PU based on acres of the VDU within the PU.

VDU	VDU ACRES	PU	PU ACRES
18	18.7	1	18.7
30	8.7	2	8.7
TOTAL:	27.4		27.4

DESCRIPTION OF TIMBER BY PAYMENT UNIT (PU)

PU	MARKET GROUP	PRODUCT	QUANTITY	UNIT	ACRES	ADVERTISE PRICE
1	Black Cherry	Sawtimber	7.3	MBF	18.7	\$15,781.40
	Mixed Aspen		90.2	MBF		
	<i>B. T. Aspen</i>		30.9	<i>MBF</i>		
	<i>Quaking Aspen</i>		59.3	<i>MBF</i>		
	Red Maple		1.2	MBF		
	Sugar Maple		21.4	MBF		
	White Ash		1.1	MBF		
	Yellow Birch		2.6	MBF		
	Mixed Aspen	Pulpwood	220	Cords		
	<i>B. T. Aspen</i>		67	<i>Cords</i>		
	<i>Quaking Aspen</i>		153	<i>Cords</i>		
	Mixed Hardwood		116	Cords		
	<i>Black Cherry</i>		9	<i>Cords</i>		
	<i>Red Maple</i>		3	<i>Cords</i>		
	<i>Sugar Maple</i>		99	<i>Cords</i>		
	<i>White Ash</i>		4	<i>Cords</i>		
	<i>Yellow Birch</i>		1	<i>Cords</i>		
2	Mixed Aspen	Sawtimber	43.3	MBF	8.7	\$5,467.75
	<i>B. T. Aspen</i>		29.2	<i>MBF</i>		
	<i>Quaking Aspen</i>		14.1	<i>MBF</i>		
	Mixed Aspen	Pulpwood	221	Cords		
	<i>B. T. Aspen</i>		120	<i>Cords</i>		
	<i>Quaking Aspen</i>		101	<i>Cords</i>		
	Mixed Hardwood		8	Cords		
	<i>Beech</i>		3	<i>Cords</i>		
	<i>Sugar Maple</i>		5	<i>Cords</i>		
TOTAL:			167.1	MBF		
TOTAL:			565	Cords		

Sale Specific Conditions & Requirements

Sale Name: Mahovlich Aspen

Sale Number: 52-103-24 Seq#: 2

1 - Sale Area

1.2 - Boundaries

1.2.1 - Painted Boundaries (9/19)

The sale boundary and Payment Unit boundaries are marked and identified by red and blue paint. Exterior sale boundary lines adjacent to private property are marked with blue paint. Exterior sale boundary lines adjacent to state-owned land are marked with red paint. Retention patches are marked with red paint; no harvesting activities may occur within these areas. The painted boundary line trees are not Included Timber and are to remain unharvested.

2 - Timber Specifications

2.1 - Included Timber

2.1.1 - Clearcut Unit(s) with Unmerchantable Trees (6/14)

Within Payment Unit(s) 1 and 2, cut all trees that are two (2) inches or more at DBH, except do not cut incidental oak, hemlock, or any tree that is 26 inches or more at DBH.

Also, a timber retention area exists within Payment Unit 1, with the boundary marked in red paint, as shown on the Timber Sale Map. No harvesting equipment is to operate within this boundary.

2.2 - Utilization

2.2.8 - Utilization and removal (5/14)

All products meeting standards set forth in General Condition and Requirement 2.2 - Utilization must be removed from the Sale Area. Retain on site between 1/6 and 1/3 of the slash from harvested trees (treetops and limbs less than four inches in diameter). This is because of forest certification biomass retention requirements.

3 - Payments

3.3 - Pre-measured Sales

3.3.4 - Dividing Payment Units (7/14)

Payment Unit(s) may be divided at the request of the Purchaser and upon approval of the Unit Manager. Dividing Payment Units is a contract modification which requires a Timber Sale Contract Amendment. There will be only one division per Payment Unit. No harvest activities may take place until the producer returns the signed amendment to the Unit Manager.

4 - Transportation

4.1 - Construction

4.1.3 - Slash and Earthen Piles (8/04)

Piles or windrows of earth along roads and landings that have been widened or constructed shall be leveled. Slash from road maintenance or construction, including stumps, shall be dispersed throughout the sale.

4.1.6 - Road Construction (4/24)

Construction of new roads or improvements of existing roads shall be done in such a way as to minimize the environmental and visual impacts. Merchantable trees shall be cut and utilized unless otherwise directed. Non-merchantable trees shall be severed and laid flat on the ground. Slash shall be scattered, and not left in windrows and kept a minimum of 10 feet back from the road edge. Stumps shall be set upright, not left on edge, and be moved at least 10 feet away from the road edge. Disturbed soil shall be feathered into the woods and not left in berms or windrows.

4.1.7 - Road Closure (10/11)

All new roads built into the sale must be blocked to vehicle traffic upon completion of the sale. Overgrown roads that are reopened shall be considered new roads. In general, this will require constructing a four (4') foot high berm of stumps and logs covered with earth.

4.1.8 - Road Work (1) (8/07)

All forest trail roads and county roads within or adjacent to the timber sale shall remain passable to vehicle traffic for the

duration of harvest activities.

4.3 - Public Right-of-Way

4.3.2 - County R-O-W (12/06)

The County must be contacted prior to crossing or harvesting in the County Road R-O-W.

5 - Operations

5.1 - Notification

5.1.1 - Pre-sale Conference (10/16)

A pre-sale conference between the Purchaser and Sale Administrator is required prior to beginning any harvest operations to discuss contract specifications and to determine landing and road locations.

5.1.6 - Utility R.O.W. (4/19)

It is the responsibility of the Purchaser to obtain permission from the utility company to utilize the pipeline R.O.W. for operations.

5.2 - Conduct of Operations

5.2.1 - Slash

5.2.1.1 - Slash Within Sale Area (9/16)

No trees are to be felled outside the Sale Area, and all slash is to be kept at least 10 feet back from the red or blue paint line. If sale boundary lines are along a public road or highway, then slash must be removed 50' from these lines per General Condition & Requirement 5.2.1.

5.2.2 - Hazard Trees/Snags

5.2.2.1 - Den Trees (10/16)

Obvious hollow and/or den trees shall be protected and left standing unless they are a safety hazard.

5.2.32 - Decking/Landing Restoration (9/13)

All decking and landing areas must have the surface area restored to a condition equal to or better than before. This is to ensure the proper regeneration of the stand. Wood debris, chips and "cookies" from trimmings must be removed or scattered away from landing and loading areas and may not be windrowed on the edge. Piles of topsoil shall be spread out evenly.

5.2.39 - ORV Trail/Route Protection (4/18)

The motorcycle trail is shown on the Timber Sale Map. Do not cut trees or damage posts with yellow markers. All stumps within 5 feet of the trail must be cut flush with the ground. Maintain a 20-foot-wide slash, debris, and rut free zone daily using the trail as the centerline. Do not run equipment down the trail.

5.4 - Soil Protection

5.4.1 - Rutting Restriction, General (7/16)

Operations are to cease immediately if equipment and weather conditions result in rutting of roads which is 12 inches or greater in depth and 50 feet in length. The Unit Manager or his/her representative may restrict hauling and/or skidding if ruts exceed the specified depth. With the Unit Manager or his/her representative's approval, the Purchaser may return to the area when the risk of rutting has decreased.

5.8 - Protection of Endangered Species

5.8.5 - Protection of Raptor Nests (3/13)

All trees with raptor nests will be protected if found during harvesting operations. Notification will be made to the Unit Manager or his/her representative who will notify the Wildlife Biologist so an onsite evaluation and recommendation can be made, if necessary.

6 - Safety and Fire Prevention

6.2 - Signing

6.2.1 - Road Posting (10/20)

The Purchaser is responsible for posting and maintaining caution signs on Mitchell Road and Berry Creek Road prior to beginning operations. The road must be posted at appropriate distances from the Sale Area to warn of logging activity and truck traffic. Signs must be removed when harvest operations are suspended or completed. The Purchaser will provide these signs.

6.2.3 - Recreational Trail Posting (10/20)

The Purchaser is responsible for posting and maintaining caution signs on the designated motorcycle trail prior to beginning operations. The trail must be posted at appropriate distances from the Sale Area to warn of logging activity and truck traffic at both ends of the trail. Signs must be removed when harvest operations are suspended or completed. The Purchaser will provide these signs.

7 - Other Conditions

7.2 - Extensions

7.2.2 - No Extensions (3/09)

There will be no extensions granted on this contract.



TIMBER SALE MAP

This information provided by authority of Part 525, 1994 PA 451, as amended.

Sale Number

52-103-24

Date

09/06/2024

Forest Management Unit

Gaylord Mgt Unit

County

Emmet

Mapped By: D Stacks

Cruised By: D Stacks

Scale

1:10,000

Page

1

Of

1

Township
34N

Range
04W

Section(s) and

Subdivision(s) Sec. 13 S1/2SE; Sec. 23 N1/2NE,SENE; Sec. 24 N1/2NE;

Cover Type

A = Aspen	J = Jack Pine	O = Oak	U = Upland Brush
B = Paper Birch	K = Rock	P = Lowland Poplar	UM = Upland Mix Forest
C = Cedar	L = Lowland Brush	Q = Mixed Swamp Conifer	V = Bog or Marsh
D = Treed Bog	LM = Lowland Mix Forest	R = Red Pine	W = White Pine
E = Swamp Hardwoods	M = Maple, Beech, Birch	S = Black Spruce	X = Non Stocked
F = Spruce/Fir	MC = Mixed Conifer	T = Tamarack	Y = Sand
G = Grass	MD = Mixed Deciduous	Z = Water	
H = Hemlock	N = Marsh		

Density

0 = Non Stocked	5 = Pole Timber Medium
1 = Seedling Sapling Poor	6 = Pole Timber Well
2 = Seedling Sapling Medium	7 = Saw Timber Poor
3 = Seedling Sapling Well	8 = Saw Timber Medium
4 = Pole Timber Poor	9 = Saw Timber Well

PU # Acres

1	18.7
2	8.7



**Mahovlich
Aspen**

27.4 Acres

Legend

- Against State (Red)
- Retention Areas
- Private Line (Blue)
- Recreational Trail
- Pipeline
- Primary Forest Road
- Forest Access Route
- Administrative Access Only
- Paved Road
- Government Gravel/Dirt
- Private Gravel/Dirt

24

Use QR Code to open Map in App



0 0.15 0.3 0.6 Miles

TIMBER SALE INFORMATION

Around the 40 Aspen Mix (52-125-22)

T39N, R03W, SEC. 33; T39N, R03W, SEC. 34.
Cheboygan County (Advertised Price \$20,076.60)

SALE NOTE: Sale is mostly operable upland except for Payment Unit 1, which is low ground. Good volume of Red Maple sawlogs in Payment Unit 4. No extensions will be granted on this contract.

Access may be through private or other public land.

A timber sale contract for this lump sum, sealed bid timber sale will be awarded to the responsible bidder offering the highest sealed bid price. All units of volume listed below were estimated using the Inventory Manager computer program and the new Michigan taper model. Bids must be at or above the following advertised price for each product and species:

<u>PRODUCTS & SPECIES</u>	<u>ESTIMATED UNITS*</u>	<u>ADVERTISED PRICE</u>
Sawtimber		
B. T. Aspen	75.2 MBF	\$ 41.00 / MBF
N. White Cedar	12.0 MBF	\$ 28.00 / MBF
Paper Birch	6.2 MBF	\$ 26.00 / MBF
Quaking Aspen	128.5 MBF	\$ 41.00 / MBF
Red Maple	20.2 MBF	\$ 82.00 / MBF
White Spruce	7.7 MBF	\$ 43.00 / MBF
Pulpwood		
B. T. Aspen	67 Cords	\$ 10.90 / Cord
Balsam Fir	138 Cords	\$ 7.95 / Cord
Mixed Aspen	327 Cords	\$ 10.90 / Cord
Mixed Hardwood	245 Cords	\$ 11.00 / Cord
N. White Cedar	121 Cords	\$ 6.40 / Cord
Paper Birch	47 Cords	\$ 5.80 / Cord
White Spruce	15 Cords	\$ 7.10 / Cord

* The total volume is statistically estimated within plus (+) or minus (-) 20.01 percent. There are an estimated 1,556 cords on this timber sale, plus or minus 311 cords at the 95% confidence level. The estimated units are final and not subject to adjustment. Prospective bidders are urged to examine this timber and to make their own estimates of quantity and quality.

BOND AND PAYMENT SCHEDULE:

1. A bond in the amount of \$2,008.00 to insure faithful performance of the conditions of the contract will be deposited by the successful bidder within 21 days of the sale award.
2. Cutting in any sale or unit without the required advance payment would be considered a trespass.
3. Total payment must be paid in advance or according to the following schedule:
 - (a) Ten percent (10%) of the sale value must be paid within 21 days of the sale award.
 - (b) The 10% down payment will be credited towards the first unit cut.
 - (c) Payment for each of the following units must be made before cutting begins in that unit:

<u>PAYMENT UNIT NUMBER</u>	<u>PERCENT OF TOTAL SALE VALUE</u>
01	26.7%
02	25.2%
03	10.8%
04	37.3%

4. If no cutting takes place, the 10% down payment will not be refunded.
5. Operations on the contract issued will terminate on 06/30/2029.

SALE STATISTICS

Volumes were calculated in cubic feet using the Michigan taper model. Cubic foot volume includes all wood inside bark for the product indicated. For display purposes, cubic feet were converted to cords and MBF using a simple conversion factor, e.g. 79 cubic feet per cord and 185 cubic feet per MBF. The cubic foot volumes are precise; the cords and MBF volumes are not. Cubic foot volume cannot be directly converted to cords or boards with precision.

SALE VOLUMES

The total estimated sale volume may not equal the sum of the species/products due to the nature of statistical calculations associated with double sampling methodology.

VOLUME			STATISTICAL RANGE IN CORDS	
TOTAL CUBIC FEET	TOTAL CORDS	PERCENT ERROR	MINIMUM	MAXIMUM
122,900	1,556	20.01%	1,244	1,867

VDU VOLUMES

A VDU is a Volume Determination Unit. Volumes and their associated statistics are calculated at the VDU level and summarized to the sale level. There is often a one to one relationship between a VDU and a Payment Unit, but not always, depending on the cruise design. Refer to the VDU TO PAYMENT UNIT table.

	VOLUME			RANGE IN CORDS	
VDU	TOTAL CUBIC FEET	TOTAL CORDS	PERCENT ERROR	MINIMUM	MAXIMUM
17	11,765	149	103.70%	0	303
19	40,592	514	42.13%	297	730
85	40,923	518	43.13%	295	741
87	29,620	375	36.61%	238	512
TOTAL:	122,900	1,556		830	2,287

VDU TO PAYMENT UNIT

When a VDU is associated with more than one Payment Unit (PU), the VDU volumes are assigned to the PU based on acres of the VDU within the PU.

VDU	VDU ACRES	PU	PU ACRES
17	4.8	3	4.8
19	18.5	4	18.5
85	16.2	1	16.2
87	10.8	2	10.8
TOTAL:	50.3		50.3

DESCRIPTION OF TIMBER BY PAYMENT UNIT (PU)

PU	MARKET GROUP	PRODUCT	QUANTITY	UNIT	ACRES	ADVERTISE PRICE
1	N. White Cedar	Sawtimber	12.0	MBF	16.2	\$5,360.25
	Quaking Aspen		48.9	MBF		
	White Spruce		3.5	MBF		
	Balsam Fir	Pulpwood	57	Cords		
	Mixed Aspen		134	Cords		
	Balsam Poplar		26	Cords		
	Quaking Aspen		108	Cords		
	Mixed Hardwood		5	Cords		
	Red Maple		5	Cords		
	N. White Cedar		121	Cords		
	Paper Birch		18	Cords		
	White Spruce	3	Cords			
2	B. T. Aspen	Sawtimber	18.0	MBF	10.8	\$5,055.75
	Quaking Aspen		31.6	MBF		
	Red Maple		2.2	MBF		
	White Spruce		2.1	MBF		
	B. T. Aspen	Pulpwood	14	Cords		
	Balsam Fir		49	Cords		
	Mixed Aspen		145	Cords		
	Quaking Aspen		145	Cords		
	Mixed Hardwood		52	Cords		
	Red Maple		52	Cords		
	White Spruce		8	Cords		
	3		B. T. Aspen	Sawtimber		
White Spruce			2.1	MBF		
B. T. Aspen		Pulpwood	28	Cords		
Balsam Fir			7	Cords		
Mixed Hardwood			21	Cords		
Red Maple			21	Cords		
White Spruce			4	Cords		
4	B. T. Aspen	Sawtimber	21.6	MBF	18.5	\$7,490.45
	Paper Birch		6.2	MBF		
	Quaking Aspen		48.0	MBF		
	Red Maple		18.0	MBF		
	B. T. Aspen	Pulpwood	25	Cords		
	Balsam Fir		25	Cords		
	Mixed Aspen		48	Cords		
	Quaking Aspen		48	Cords		
	Mixed Hardwood		167	Cords		
	Red Maple		151	Cords		
	Sugar Maple		8	Cords		
	White Ash		8	Cords		
	Paper Birch		29	Cords		
TOTAL:			249.8	MBF		
TOTAL:			960	Cords		

Sale Specific Conditions & Requirements

Sale Name: Around the 40 Aspen Mix

Sale Number: 52-125-22 Seq#: 2

1 - Sale Area

1.2 - Boundaries

1.2.1 - Painted Boundaries (9/19)

The sale boundary and Payment Unit boundaries are marked and identified by blue and red paint. Exterior sale boundary lines against private property are marked with blue paint. Exterior sale boundary lines against state are marked with red paint.

2 - Timber Specifications

2.1 - Included Timber

2.1.2 - Clearcut Unit(s) w/o Unmerchantable Trees (8/11)

Within Payment Unit(s) 1-4, cut all trees which meet minimum piece specifications in 2.2 Utilization, except for the following:

- Within Payment Unit 1, do not cut and red or white pine.
- Within Payment Unit 2, do not cut any white pine.
- Within Payment Unit 3, do not cut any oak or pine.
- Within Payment Unit 4, do not cut any spruce, cedar, or hemlock.

2.2 - Utilization

2.2.9 - No Chipping Permitted (12/08)

Within Payment Unit(s) 4, all wood must be removed by whole tree, tree segment, or roundwood. No chipping is permitted.

3 - Payments

3.6 - Payment Unit Cutting Schedule

3.6.1 - Order of Cutting (1/09)

Payment Units shall be cut in numerical order, unless the sale is paid in full.

4 - Transportation

4.1 - Construction

4.1.3 - Slash and Earthen Piles (8/04)

Piles or windrows of earth along roads and landings that have been widened or constructed shall be leveled. Slash from road maintenance or construction, including stumps, shall be dispersed throughout the sale.

4.1.5 - Culverts (5/14)

The access road leading to the Sale Area may require the installation of culverts for cross drainage or at natural drainage-ways. If culverts are needed in these locations, their placement will be specified by the Sale Administrator, and they shall be installed prior to hauling. The culverts shall be new, corrugated metal or plastic gauge.

4.1.6 - Road construction (1/09)

Construction of new roads or improvements of existing roads shall be done in such a way as to minimize the environmental and visual impacts. Merchantable trees shall be cut and utilized unless otherwise directed. Non-merchantable trees shall be severed and laid flat on the ground. Slash shall be scattered, and not left in windrows and kept a minimum of 10 feet back from the road edge. Stumps shall be set upright, not left on edge, and be moved at least 10 feet away from the road edge. Disturbed soil shall be feathered into the woods and not left in berms or windrows.

4.1.7 - Road Closure (10/11)

All new roads built into the sale must be blocked to vehicle traffic upon completion of the sale. In general, this will require constructing a four (4') foot high berm of stumps and logs covered with earth.

4.2 - Maintenance

4.2.4 - Grading (10/16)

For completion of the sale, state forest roads must be graded. In general, this will require a road grader or bulldozer to shape up the roads after forest products have been hauled off site. This includes cleaning of drainage areas, grading, crowning and filling with gravel, if necessary. The grading equipment to be used must be approved by the Unit Manager or his/her representative.

4.4 - Access

4.4.1 - Private property access (3/11)

Permission for access across private land has been obtained under a DNR easement.

5 - Operations

5.1 - Notification

5.1.1 - Pre-sale Conference (10/16)

A pre-sale conference on site between the Purchaser and Sale Administrator is required prior to beginning any operations to determine landing and road locations. The Unit Manager or his/her representative must be contacted at least 3 days in advance to schedule the conference.

5.1.4 - Post-Sale Conference (10/16)

A post-sale conference on site between the Purchaser and sale administrator is required 3 days prior to the completion of active logging operations to determine clean-up and repair of landings, road edges, and the fulfillment of other contract specifications.

5.2 - Conduct of Operations

5.2.2 - Hazard Trees/Snags

5.2.2.1 - Den Trees (10/16)

Obvious hollow and/or den trees shall be protected and left standing unless they are a safety hazard.

5.2.4 - Dead and Down Creation

5.2.4.1 - Dead and Down Creation, Marked Trees (10/13)

In Payment Units 3 and 4, any Balsam Fir trees marked with a band of green paint must be hinge cut for hare habitat. In addition, any aspen marked with a band of green paint must be cut and left as a drumming log.

5.2.22 - Operating Caution

5.2.22.1 - Operating Caution (6/11)

It is recommended, but not required, that within Payment Unit(s), cutting, skidding, and hauling occur during dry summer or frozen winter conditions with tracked equipment. The reason for the recommendation is due to the wetter soil conditions.

5.2.31 - Landing Locations (9/13)

Recommended landing areas will be located on private property parcel and centrally located to all units. Contact Sale Administrator for specific location of any landings.

5.4 - Soil Protection

5.4.1 - Rutting Restriction, General (7/16)

Operations are to cease immediately if equipment and weather conditions result in rutting of roads and/or skid trails which is 12 inches or greater in depth and 50 feet in length. The Unit Manager or his/her representative may restrict hauling and/or skidding if ruts exceed the specified depth. With the Unit Manager or his/her representative's approval, the Purchaser may return to the area when the risk of rutting has decreased.

5.8 - Protection of Endangered Species

5.8.5 - Protection of Raptor Nests (3/13)

All trees with raptor nests will be protected if found during harvesting operations. Notification will be made to the Unit Manager or his/her representative who will notify the Wildlife Biologist so an onsite evaluation and recommendation can be

made, if necessary.

6 - Safety and Fire Prevention

6.2 - Signing

6.2.1 - Road Posting (10/20)

The Purchaser is responsible for posting and maintaining caution signs on Potter Road prior to beginning operations. The road must be posted at appropriate distances from the Sale Area to warn of logging activity and truck traffic. Signs must be removed when harvest operations are suspended or completed. The Purchaser will provide these signs.

7 - Other Conditions

7.2 - Extensions

7.2.2 - No Extensions (3/09)

There will be no extensions granted on this contract.

7.5 - Loss

7.5.1 - Deteriorating Timber (7/09)

The Sale Area has received damage from individual tree windthrow and over maturity. The Purchaser should harvest the wood as soon as possible. The Department of Natural Resources is held free of responsibility of any further damage or deterioration due to delay in harvesting.



TIMBER SALE MAP

This information provided by authority of Part 525, 1994 PA 451, as amended.

Sale Number	Year
52 - 125	22

Forest Management Unit Gaylord	County Cheboygan	Mapped By TSP	Date 09/29/2022	Page 1	of 1
Cruised By Scheele					

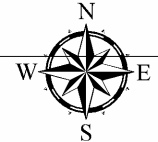
Township 39N	Range 03W	Section(s) and Subdivision(s) 33: NESE, S1/2SE; 34: N1/2SW, SESW	Scale 1:15,840
-----------------	--------------	---	-------------------

Cover Type

A = Aspen	H = Hemlock	N = Marsh	U = Upland Brush
B = Paper Birch	J = Jack Pine	O = Oak	UM = Upland Mixed
C = Cedar	L = Lowland Brush	P = Lowland Poplar	V = Bog or Marsh
D = Treed Bog	LM = Lowland Mixed	Q = Mixed Swamp Conifer	W = White Pine
E = Swamp Hdwoods	M = Mpl, Bch, Brch	R = Red Pine	X = Non Stocked
F = Spruce Fir	MC = Mixed Conifer	S = Black Spruce	Z = Water
G = Grass	MD = Mixed Deciduous	T = Tamarack	

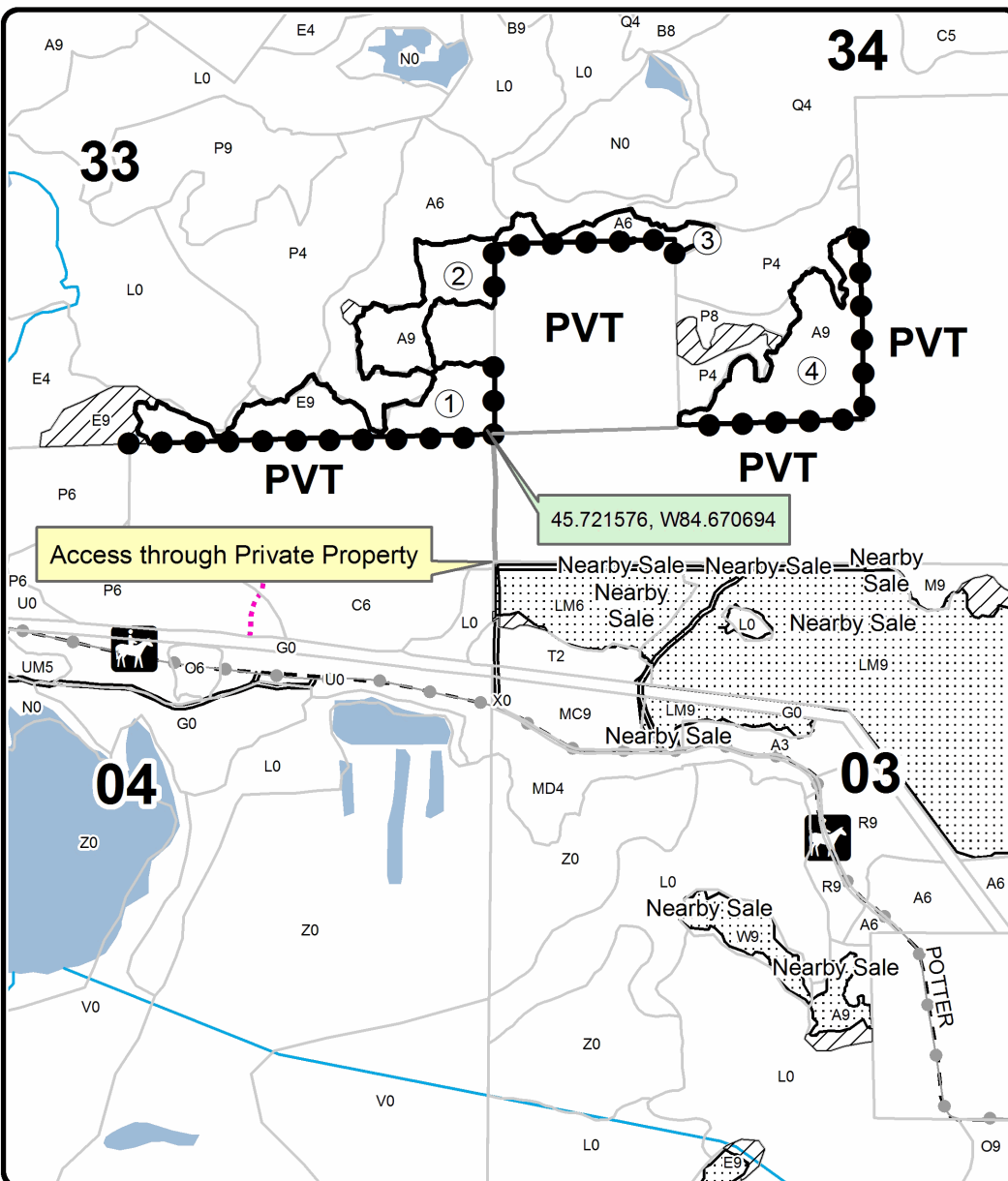
Density

0 = Non Stocked	5 = Pole Timber Medium
1 = Seedling Sapling Poor	6 = Pole Timber Well
2 = Seedling Sapling Medium	7 = Saw Timber Poor
3 = Seedling Sapling Well	8 = Saw Timber Medium
4 = Pole Timber Poor	9 = Saw Timber Well



PU	Acres	PU	Acres
1	16.2	4	18.5
2	10.8		
3	4.8		

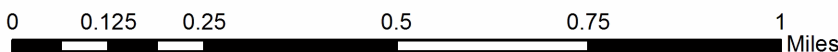
Around the 40 Aspen Mix
Compartment 136 & 164
50.3 Acres



Legend

- Against State (Red)
- Private Line (Blue)
- ▨ Retention Area
- Stand Boundaries
- Recreational Trail
- Secondary Forest Road
- - Gravel Road
- Private
- ... Temporary Management Access
- Perennial River
- Lakes and Rivers
- ▨ Nearby Timber Sales

Locator Map
1:200,000



Around the 40 Aspen Mix (52-125-22)
T39N, R03W, SEC. 33; T39N, R03W, SEC. 34; Cheboygan COUNTY

In response to the notice of sale to be held 9:00 a.m. (local time) on May 13, 2025, I am hereby submitting my sealed bid (firm offer) for the following forest products to be cut. Bids for individual species must be at or above the advertised price. All non-responsive bid forms may be rejected.

<u>PRODUCTS & SPECIES</u>	<u>ESTIMATED VOLUME*</u>	<u>ADVERTISED PRICE</u>	<u>BID PRICE/UNIT</u>
Sawtimber			
B. T. Aspen	75.2 MBF	\$ 41.00/MBF	\$ _____
N. White Cedar	12.0 MBF	\$ 28.00/MBF	\$ _____
Paper Birch	6.2 MBF	\$ 26.00/MBF	\$ _____
Quaking Aspen	128.5 MBF	\$ 41.00/MBF	\$ _____
Red Maple	20.2 MBF	\$ 82.00/MBF	\$ _____
White Spruce	7.7 MBF	\$ 43.00/MBF	\$ _____
Pulpwood			
B. T. Aspen	67 Cords	\$ 10.90/Cord	\$ _____
Balsam Fir	138 Cords	\$ 7.95/Cord	\$ _____
Mixed Aspen	327 Cords	\$ 10.90/Cord	\$ _____
Mixed Hardwood	245 Cords	\$ 11.00/Cord	\$ _____
N. White Cedar	121 Cords	\$ 6.40/Cord	\$ _____
Paper Birch	47 Cords	\$ 5.80/Cord	\$ _____
White Spruce	15 Cords	\$ 7.10/Cord	\$ _____

*The volumes are statistically estimated within plus (+) or minus (-) 20.01 percent at 95% confidence level. These estimated volumes are final and not subject to adjustment. Prospective bidders are urged to examine this timber and to make their own estimates of quantity and quality.

I understand that any or all bids may be rejected. All bids must be signed and all bid items must be bid or the bid form may be rejected. I also understand that consideration and awarding a contract will be based upon my past performance and ability to complete the contract based upon equipment and staffing subject to my control .

FEDERAL ID: ____ - ____ - ____ or SOCIAL SECURITY NUMBER: ____ - ____ - ____

Company or individual bidding: _____

Company representative's name: _____

Address: _____

City: _____ State: _____ Zip: _____

IF AVAILABLE, PLEASE PLACE THE PERSONALIZED LABEL FROM YOUR PROSPECTUS IN THE ABOVE BOX.

Individual or company representative's signature: _____ Date: _____

Phone number : _____ Email (optional): _____

**THE WINNING BIDDER MUST COMPLETE THE VERIFICATION OF WORKER'S DISABILITY COMPENSATION ACT
COMPLIANCE (ON REVERSE SIDE IF DOUBLE SIDED) WITHIN 21 DAYS OF SALE AWARD DATE**



TIMBER SALE VERIFICATION OF WORKER'S DISABILITY COMPENSATION ACT COMPLIANCE

As required by Act 317, P.A. 1969 (Worker's Compensation) and
Part 5 of Act 451 of 1994, as amended.

FOR DEPARTMENT USE ONLY

Sale Number (XX - XXX - XX - XX)

Forest Management Unit:

VERIFICATION OF WORKER'S DISABILITY COMPENSATION ACT COMPLIANCE

- This verification must be completed and submitted within 21 days of contract award and prior to the issuance of the timber sale contract.
- In addition, if boxes 2B or 2C are checked, then Notice of Exclusion or Certificate of Insurance must be submitted within twenty-one (21) days of the contract award and prior to the issuance of the timber sale contract.
- All Information must be typed or printed except for written signatures.

Please Check Appropriate Categories:

1. My business is organized as (you **must** check one of the boxes below):
 - A. ☐ Sole Proprietorship (individual)
 - B. ☐ Partnership
 - C. ☐ Corporation
2. You **must** check one of the boxes below:
 - A. ☐ I certify my business is a sole proprietorship and it has no employees but the sole proprietor. I am not subject to the Worker's Compensation Laws.
 - B. ☐ I certify my business has satisfied its obligation to the Worker's Compensation Act through the use of an approved Notice of Exclusion (BWC-337, Rev. 5/96). I will provide a copy of the Notice of Exclusion within 21 days of the contract award. (For questions or a copy of the BWC-337, please call the Worker's Compensation Bureau at 517-322-1195).
 - C. ☐ I certify my business has a Worker's Compensation Policy. I will provide an original Certificate of Insurance within twenty-one (21) days of the contract award.
3. If you have checked item 2(A) or 2(B), you **must** indicate the number of **both** full-time and part-time employees, other than yourself, including family members and active partners (if none, you must enter "0").

_____ Full-time Employees

_____ Part-time Employees

Name of Business		Federal ID (or) Social Security No.
Address		Telephone ()
City	State	ZIP

I hereby certify that the above information is true and correct. I agree to notify the Michigan DNR of any changes that occur in factors affecting my coverage during any of my present and future operations.

Signature of Owner or Authorized Representative

Title

Date

Please complete the "SEALED BID" information on the next page

Big Rock Beaver Hut Hardwoods (52-006-24)
T30N, R06W, SEC. 16; T30N, R06W, SEC. 21; Antrim COUNTY

In response to the notice of sale to be held 9:00 a.m. (local time) on May 13, 2025, I am hereby submitting my sealed bid (firm offer) for the following forest products to be cut. Bids for individual species must be at or above the advertised price. All non-responsive bid forms may be rejected.

<u>PRODUCTS & SPECIES</u>	<u>ESTIMATED VOLUME*</u>	<u>ADVERTISED PRICE</u>	<u>BID PRICE/UNIT</u>
Sawtimber			
B. T. Aspen	23.9 MBF	\$ 45.00/MBF	\$ _____
Basswood	532.9 MBF	\$ 42.00/MBF	\$ _____
Beech	12.4 MBF	\$ 59.00/MBF	\$ _____
Black Cherry	57.4 MBF	\$ 144.00/MBF	\$ _____
Quaking Aspen	22.0 MBF	\$ 45.00/MBF	\$ _____
Red Maple	93.3 MBF	\$ 89.00/MBF	\$ _____
Sugar Maple	756.7 MBF	\$ 189.00/MBF	\$ _____
White Spruce	24.7 MBF	\$ 47.00/MBF	\$ _____
Pulpwood			
Basswood	421 Cords	\$ 7.35/Cord	\$ _____
Mixed Aspen	162 Cords	\$ 11.90/Cord	\$ _____
Mixed Hardwood	384 Cords	\$ 12.00/Cord	\$ _____
Sugar Maple	1,520 Cords	\$ 12.00/Cord	\$ _____
White Spruce	81 Cords	\$ 7.75/Cord	\$ _____

*The volumes are statistically estimated within plus (+) or minus (-) 11.12 percent at 95% confidence level. These estimated volumes are final and not subject to adjustment. Prospective bidders are urged to examine this timber and to make their own estimates of quantity and quality.

I understand that any or all bids may be rejected. All bids must be signed and all bid items must be bid or the bid form may be rejected. I also understand that consideration and awarding a contract will be based upon my past performance and ability to complete the contract based upon equipment and staffing subject to my control .

FEDERAL ID: ____ - ____ - ____ or SOCIAL SECURITY NUMBER: ____ - ____ - ____

Company or individual bidding: _____

Company representative's name: _____

Address: _____

City: _____ State: _____ Zip: _____

IF AVAILABLE, PLEASE PLACE THE PERSONALIZED LABEL FROM YOUR PROSPECTUS IN THE ABOVE BOX.

Individual or company representative's signature: _____ Date: _____

Phone number : _____ Email (optional): _____

**THE WINNING BIDDER MUST COMPLETE THE VERIFICATION OF WORKER'S DISABILITY COMPENSATION ACT
COMPLIANCE (ON REVERSE SIDE IF DOUBLE SIDED) WITHIN 21 DAYS OF SALE AWARD DATE**



TIMBER SALE VERIFICATION OF WORKER'S DISABILITY COMPENSATION ACT COMPLIANCE

As required by Act 317, P.A. 1969 (Worker's Compensation) and
Part 5 of Act 451 of 1994, as amended.

FOR DEPARTMENT USE ONLY

Sale Number (XX - XXX - XX - XX)

Forest Management Unit:

VERIFICATION OF WORKER'S DISABILITY COMPENSATION ACT COMPLIANCE

- This verification must be completed and submitted within 21 days of contract award and prior to the issuance of the timber sale contract.
- In addition, if boxes 2B or 2C are checked, then Notice of Exclusion or Certificate of Insurance must be submitted within twenty-one (21) days of the contract award and prior to the issuance of the timber sale contract.
- All Information must be typed or printed except for written signatures.

Please Check Appropriate Categories:

1. My business is organized as (you **must** check one of the boxes below):
 - A. ☐ Sole Proprietorship (individual)
 - B. ☐ Partnership
 - C. ☐ Corporation
2. You **must** check one of the boxes below:
 - A. ☐ I certify my business is a sole proprietorship and it has no employees but the sole proprietor. I am not subject to the Worker's Compensation Laws.
 - B. ☐ I certify my business has satisfied its obligation to the Worker's Compensation Act through the use of an approved Notice of Exclusion (BWC-337, Rev. 5/96). I will provide a copy of the Notice of Exclusion within 21 days of the contract award. (For questions or a copy of the BWC-337, please call the Worker's Compensation Bureau at 517-322-1195).
 - C. ☐ I certify my business has a Worker's Compensation Policy. I will provide an original Certificate of Insurance within twenty-one (21) days of the contract award.
3. If you have checked item 2(A) or 2(B), you **must** indicate the number of **both** full-time and part-time employees, other than yourself, including family members and active partners (if none, you must enter "0").

_____ Full-time Employees

_____ Part-time Employees

Name of Business		Federal ID (or) Social Security No.
Address		Telephone ()
City	State	ZIP

I hereby certify that the above information is true and correct. I agree to notify the Michigan DNR of any changes that occur in factors affecting my coverage during any of my present and future operations.

Signature of Owner or Authorized Representative

Title

Date

Please complete the "SEALED BID" information on the next page

Future Legacy Hardwoods (52-007-24)
T30N, R06W, SEC. 4; T30N, R06W, SEC. 5; Antrim COUNTY

In response to the notice of sale to be held 9:00 a.m. (local time) on May 13, 2025, I am hereby submitting my sealed bid (firm offer) for the following forest products to be cut. Bids for individual species must be at or above the advertised price. All non-responsive bid forms may be rejected.

<u>PRODUCTS & SPECIES</u>	<u>ESTIMATED VOLUME*</u>	<u>ADVERTISED PRICE</u>	<u>BID PRICE/UNIT</u>
Sawtimber			
Basswood	529.7 MBF	\$ 53.00/MBF	\$ _____
Beech	39.6 MBF	\$ 73.00/MBF	\$ _____
Black Cherry	22.5 MBF	\$ 180.00/MBF	\$ _____
Mixed Aspen	129.2 MBF	\$ 56.00/MBF	\$ _____
Red Maple	208.9 MBF	\$ 112.00/MBF	\$ _____
Sugar Maple	311.6 MBF	\$ 236.00/MBF	\$ _____
Pulpwood			
Balsam Fir	92 Cords	\$ 10.80/Cord	\$ _____
Basswood	503 Cords	\$ 9.20/Cord	\$ _____
Mixed Aspen	528 Cords	\$ 14.85/Cord	\$ _____
Mixed Hardwood	1,569 Cords	\$ 15.00/Cord	\$ _____

*The volumes are statistically estimated within plus (+) or minus (-) 12.07 percent at 95% confidence level. These estimated volumes are final and not subject to adjustment. Prospective bidders are urged to examine this timber and to make their own estimates of quantity and quality.

I understand that any or all bids may be rejected. All bids must be signed and all bid items must be bid or the bid form may be rejected. I also understand that consideration and awarding a contract will be based upon my past performance and ability to complete the contract based upon equipment and staffing subject to my control .

FEDERAL ID: ____ - ____ - ____ or SOCIAL SECURITY NUMBER: ____ - ____ - ____

Company or individual bidding: _____

Company representative's name: _____

Address: _____

City: _____ State: _____ Zip: _____

IF AVAILABLE, PLEASE PLACE THE PERSONALIZED LABEL FROM YOUR PROSPECTUS IN THE ABOVE BOX.

Individual or company representative's signature: _____ Date: _____

Phone number : _____ Email (optional): _____

**THE WINNING BIDDER MUST COMPLETE THE VERIFICATION OF WORKER'S DISABILITY COMPENSATION ACT
COMPLIANCE (ON REVERSE SIDE IF DOUBLE SIDED) WITHIN 21 DAYS OF SALE AWARD DATE**



TIMBER SALE VERIFICATION OF WORKER'S DISABILITY COMPENSATION ACT COMPLIANCE

As required by Act 317, P.A. 1969 (Worker's Compensation) and
Part 5 of Act 451 of 1994, as amended.

FOR DEPARTMENT USE ONLY

Sale Number (XX - XXX - XX - XX)

Forest Management Unit:

VERIFICATION OF WORKER'S DISABILITY COMPENSATION ACT COMPLIANCE

- This verification must be completed and submitted within 21 days of contract award and prior to the issuance of the timber sale contract.
- In addition, if boxes 2B or 2C are checked, then Notice of Exclusion or Certificate of Insurance must be submitted within twenty-one (21) days of the contract award and prior to the issuance of the timber sale contract.
- All information must be typed or printed except for written signatures.

Please Check Appropriate Categories:

1. My business is organized as (you **must** check one of the boxes below):
 - A. ☐ Sole Proprietorship (individual)
 - B. ☐ Partnership
 - C. ☐ Corporation
2. You **must** check one of the boxes below:
 - A. ☐ I certify my business is a sole proprietorship and it has no employees but the sole proprietor. I am not subject to the Worker's Compensation Laws.
 - B. ☐ I certify my business has satisfied its obligation to the Worker's Compensation Act through the use of an approved Notice of Exclusion (BWC-337, Rev. 5/96). I will provide a copy of the Notice of Exclusion within 21 days of the contract award. (For questions or a copy of the BWC-337, please call the Worker's Compensation Bureau at 517-322-1195).
 - C. ☐ I certify my business has a Worker's Compensation Policy. I will provide an original Certificate of Insurance within twenty-one (21) days of the contract award.
3. If you have checked item 2(A) or 2(B), you **must** indicate the number of **both** full-time and part-time employees, other than yourself, including family members and active partners (if none, you must enter "0").

_____ Full-time Employees

_____ Part-time Employees

Name of Business		Federal ID (or) Social Security No.
Address		Telephone ()
City	State	ZIP

I hereby certify that the above information is true and correct. I agree to notify the Michigan DNR of any changes that occur in factors affecting my coverage during any of my present and future operations.

Signature of Owner or Authorized Representative

Title

Date

Please complete the "SEALED BID" information on the next page

Mahovlich Aspen (52-103-24)

T34N, R04W, SEC. 13; T34N, R04W, SEC. 23; T34N, R04W, SEC. 24; Emmet

In response to the notice of sale to be held 9:00 a.m. (local time) on May 13, 2025, I am hereby submitting my sealed bid (firm offer) for the following forest products to be cut. Bids for individual species must be at or above the advertised price. All non-responsive bid forms may be rejected.

<u>PRODUCTS & SPECIES</u>	<u>ESTIMATED VOLUME*</u>	<u>ADVERTISED PRICE</u>	<u>BID PRICE/UNIT</u>
Sawtimber			
Black Cherry	7.3 MBF	\$ 168.00/MBF	\$ _____
Mixed Aspen	133.5 MBF	\$ 53.00/MBF	\$ _____
Red Maple	1.2 MBF	\$ 104.00/MBF	\$ _____
Sugar Maple	21.4 MBF	\$ 220.00/MBF	\$ _____
White Ash	1.1 MBF	\$ 64.00/MBF	\$ _____
Yellow Birch	2.6 MBF	\$ 77.00/MBF	\$ _____
Pulpwood			
Mixed Aspen	441 Cords	\$ 13.85/Cord	\$ _____
Mixed Hardwood	124 Cords	\$ 14.00/Cord	\$ _____

*The volumes are statistically estimated within plus (+) or minus (-) 34.93 percent at 95% confidence level. These estimated volumes are final and not subject to adjustment. Prospective bidders are urged to examine this timber and to make their own estimates of quantity and quality.

I understand that any or all bids may be rejected. All bids must be signed and all bid items must be bid or the bid form may be rejected. I also understand that consideration and awarding a contract will be based upon my past performance and ability to complete the contract based upon equipment and staffing subject to my control .

FEDERAL ID: ____ - ____ - ____ or SOCIAL SECURITY NUMBER: ____ - ____ - ____

Company or individual bidding: _____

Company representative's name: _____

Address: _____

City: _____ State: _____ Zip: _____

IF AVAILABLE, PLEASE PLACE THE PERSONALIZED LABEL FROM YOUR PROSPECTUS IN THE ABOVE BOX.

Individual or company representative's signature: _____ Date: _____

Phone number : _____ Email (optional): _____

**THE WINNING BIDDER MUST COMPLETE THE VERIFICATION OF WORKER'S DISABILITY COMPENSATION ACT
COMPLIANCE (ON REVERSE SIDE IF DOUBLE SIDED) WITHIN 21 DAYS OF SALE AWARD DATE**



TIMBER SALE VERIFICATION OF WORKER'S DISABILITY COMPENSATION ACT COMPLIANCE

As required by Act 317, P.A. 1969 (Worker's Compensation) and
Part 5 of Act 451 of 1994, as amended.

FOR DEPARTMENT USE ONLY

Sale Number (XX - XXX - XX - XX)

Forest Management Unit:

VERIFICATION OF WORKER'S DISABILITY COMPENSATION ACT COMPLIANCE

- This verification must be completed and submitted within 21 days of contract award and prior to the issuance of the timber sale contract.
- In addition, if boxes 2B or 2C are checked, then Notice of Exclusion or Certificate of Insurance must be submitted within twenty-one (21) days of the contract award and prior to the issuance of the timber sale contract.
- All Information must be typed or printed except for written signatures.

Please Check Appropriate Categories:

1. My business is organized as (you **must** check one of the boxes below):
 - A. ☐ Sole Proprietorship (individual)
 - B. ☐ Partnership
 - C. ☐ Corporation
2. You **must** check one of the boxes below:
 - A. ☐ I certify my business is a sole proprietorship and it has no employees but the sole proprietor. I am not subject to the Worker's Compensation Laws.
 - B. ☐ I certify my business has satisfied its obligation to the Worker's Compensation Act through the use of an approved Notice of Exclusion (BWC-337, Rev. 5/96). I will provide a copy of the Notice of Exclusion within 21 days of the contract award. (For questions or a copy of the BWC-337, please call the Worker's Compensation Bureau at 517-322-1195).
 - C. ☐ I certify my business has a Worker's Compensation Policy. I will provide an original Certificate of Insurance within twenty-one (21) days of the contract award.
3. If you have checked item 2(A) or 2(B), you **must** indicate the number of **both** full-time and part-time employees, other than yourself, including family members and active partners (if none, you must enter "0").

_____ Full-time Employees

_____ Part-time Employees

Name of Business		Federal ID (or) Social Security No.
Address		Telephone ()
City	State	ZIP

I hereby certify that the above information is true and correct. I agree to notify the Michigan DNR of any changes that occur in factors affecting my coverage during any of my present and future operations.

Signature of Owner or Authorized Representative

Title

Date

Please complete the "SEALED BID" information on the next page