



**DEPARTMENT OF NATURAL RESOURCES
STATE OF MICHIGAN
TIMBER SALE PROSPECTUS #7593**

SCHEDULED SALE DATE AND TIME: 10:00 a.m. (local time) on April 22, 2025.

LOCATION: GLADWIN MGMT UNIT, 801 NORTH SILVERLEAF, GLADWIN, MI 48624.

PROSPECTUS NOTE: The bidder is advised to inspect the sale area and review the location, estimated volumes, operating costs and contract terms of proposed sales. Please be aware that some landowners may request 60 days or more notice for access across their land.

Notice is hereby given that bids will be received by the Unit Manager, GLADWIN MANAGEMENT UNIT, for certain timber on the following described lands:

Triple F (73-006-24) / T17N, R05W, SEC. 27, S1/2NW, W1/2NE.

T17N, R05W, SEC. 28, SWSW.

T17N, R05W, SEC. 29, S1/2NW, N1/2SW, N1/2SE, SESE.

T17N, R05W, SEC. 34, NESW.

Clare County, Advertised Price \$202,715.20, 117.3 Acres, Aspen, Hardwood.

SALE NOTE: A recreation site such as a trail, pathway, or campground is within the sale area or the vicinity. Certain restrictions/specifications may be applicable including time restrictions.

BID INSTRUCTIONS (VER. 10/10/2022):

1. Scheduled Bid Location, Date, and Time (2/11)

Bids must be received by the Unit Manager, GLADWIN OFFICE, 801 NORTH SILVERLEAF, GLADWIN, MI 48624, no later than 10:00 a.m. (local time) on April 22, 2025. For further information concerning this sale, contact Blair Tweedale at 989-426-9205 extension 7640.

2. Bidder's Qualifications (10/22)

If all or part of a timber sale was prepared by a private contractor, the contractor and that contractor's company are not permitted to bid on the timber sale. A person must be 18 years of age or older to purchase timber. Permanent employees of the Department of Natural Resources or members of their immediate household may not bid. Former employees, in the permanent or seasonal class, may not bid until 3 months after the last day of active duty. Bids will not be accepted from individuals or companies appearing on the DNR/FRD No-Bid List. This list contains the names of purchasers who previously failed to execute a contract within 21-days or who have a history of poor performance.

3. Preparation of Sealed Bids (5/16)

Bid Forms may be completed online thru Michigan DNR Timber Sale Online Bidding (OLB) at www.michigan.gov/timberbidding or by completing the hardcopy Bid Form found in the Timber Sale Prospectus. Hardcopy Bid Forms shall be manually signed in ink. Registration in OLB is considered your 'signature' for all bids submitted thru that system. Bid prices must be entered for each species and product in the Bid Price column for all material subject to bidding and all fill-in blanks must be completed. If erasures or other changes appear on the hardcopy Bid Form, each erasure or change must be initialed by the person signing the bid.

4. Submission of Sealed Bids (5/16)

Bid forms may be obtained from the Unit Manager or thru OLB. Bids may be submitted hardcopy or thru OLB. All hardcopy bids must be submitted on the bid form and in an envelope clearly identified as described in this section. NOTE: Only one bid form per bid envelope. Sealed bids must be submitted to the Unit office designated in the prospectus and must be submitted at or prior to the time established in the prospectus. The envelope should show on the outside (a) the sale name or number and (b) the date and time of bid opening, as shown in the prospectus. Bids received after the time specified in the sale prospectus are late bids and will be rejected.

It is possible for a bidder to submit multiple bids on a single sale. For example, a bid may be submitted hardcopy and a bid may be submitted thru OLB. Or, two bidders from the same company could both submit bids on the same sale. If this were to happen, the State would accept all bids received and award the contract accordingly. All bidding and contractual requirements would apply to all bids received.

5. Public Opening of Sealed Bids (7/16)

If conditions permit, the sealed bids will be publicly opened and posted at the time and place set in the prospectus.

If a bidder, present at a bid opening, has submitted bids on more than one sale, that bidder may withdraw their unopened bid envelopes or announce the withdrawal of their online bid after being declared the successful bidder on one sale.

6. Award of Contract (1/11)

Award of the contract will be made to the Bidder whose bid, conforming to the prospectus, is most advantageous to the State of Michigan on the basis of total value at rates bid for the estimated quantities. The State reserves the right to reject any bid or waive any minor irregularity in bids received. A written award mailed (or otherwise furnished) to the successful Bidder shall be deemed to result in a binding contract without further action by either party.

7. Down Payment (1/11)

The Bidder to whom award is made must make a down payment within 21 days of the sale award. The amount of the down payment will be calculated as shown in the Bond and Payment Schedule of this prospectus. Only cash may be used to meet this requirement.

8. Performance Security (1/11)

As guarantee of faithful performance, a cash bond, certificate of deposit, surety bond or irrevocable letter of credit (LOC) is required within 21 days of the sale award. The amount of the performance security is shown in the Bond and

Payment Schedule of this prospectus. If an LOC or surety is used, the coverage must extend for at least 6 months beyond the contract expiration.

9. Worker's Compensation (10/22)

Purchaser shall obtain worker's compensation insurance to cover claims under Michigan's Worker's Disability Compensation Act of 1969 or similar employee benefit act of any other state applicable to an employee. Verification of Worker's Disability Compensation Act Compliance must be completed and submitted within 21 days of contract award and prior to the issuance of the timber sale contract. In addition, if applicable, Notice of Exclusion or Certificate of Insurance must also be submitted.

10. Timber Sale Contract (10/22)

Additional conditions and requirements common to all timber sales are listed on the timber sale contract (R4031) and are available on line at www.michigan.gov/timber. Contact the Unit Manager for additional information or a sample contract. Within 21 days of the date of the award letter, the bidder must sign the contract and provide the required down payment, performance security, and verification of worker's disability compensation. The down payment and performance security shall be in accordance with the provisions of the timber sale contract, in the sums stated in this prospectus. If these actions are not taken, then the Bidder, the Bidder's corporation, and the corporation's principals may not be permitted to bid on State timber sales for a period of 3 months after the first offense, 6 months after the second offense, and 1 year after the third offense. An offense will only be counted against the Bidder for 5 years. In addition, the Bidder certifies that if awarded this contract, the Bidder will complete the timber sale contract in accordance with its terms and any modifications thereof including requirements to purchase, cut, and remove the included timber by the expiration date.

Payment Unit values in the State Forest Timber Sale Contract are calculated based on the advertised value of the Payment Unit as a percentage of the total advertised value of the contract. The advertised value of each Payment Unit is given in the Description of Timber by Payment Unit table on the Timber Sale Information page. For example, if the value of Payment Unit 1 is advertised as \$1,500 and the total Timber Sale value is advertised as \$10,000, the contract price for Payment Unit 1 will be 15% of the total bid price ($\$1,500/\$10,000 * 100$).

11. Disclaimer of Estimates and Bidder's Warranty of Inspection (10/22)

Before submitting this bid, the Bidder is advised and cautioned to inspect the sale area, review the requirements of the sale contract, and take other steps as may be reasonably necessary to ascertain the location, estimated volumes, construction estimates, and operating costs of the proposed sale. Failure to do so will not relieve the Bidder from responsibility for completing the contract.

The Bidder warrants that this bid is submitted solely on the basis of the Bidder's examination and inspection of the quality and quantity of the timber offered for sale and the Bidder's opinion of the value thereof and the costs of recovery. No reliance should be placed on the State of Michigan's estimates of timber quality, quantity or costs of recovery. Bidder further acknowledges that the State of Michigan: (i) expressly disclaims any warranty of fitness of timber for any purpose; (ii) offers this timber as is without any warranty of quality (merchantability) or quantity and (iii) expressly disclaims any warranty as to the quantity or quality of timber sold.

12. Certification and Chain-of-Custody (10/22)

Unless otherwise indicated in the contract under section 7 – Other Conditions of the Sale Specific Conditions & Requirements, the area encompassed by this timber sale is certified to the standards of the Forest Stewardship Council (FSC) - Certificate #SCS-FM/COC-00090N and the Sustainable Forestry Initiative (SFI) - Certificate #NSF-SFIS-5Y031-SF5. Forest products from this sale may be delivered to the mill as "FSC 100% and / or SFI certified" as long as the contractor hauling the forest products is chain-of-custody (COC) certified or covered under a COC certificate from the destination mill. The purchaser is responsible for maintaining COC after leaving the sale area.

13. Good Neighbor Authority (GNA) Requirements (10/22)

If the name of this timber sales contains the acronym GNA, it is authorized by the Good Neighbor Authority (GNA) and covered by various agreements between the U.S. Forest Service and the State. The timber sale occurs on federal land and the following conditions apply:

GNA contracts on US Forest Service land will not be awarded to purchasers on the Federal list of excluded parties. The System for Award Management (SAM) will be checked for active excluded parties prior to award of contract. In

addition, the Bidder to whom award is made must complete an Assurance Regarding Felony Conviction or Tax Delinquent Status for Corporate Applicants (AD-3031).

14. Good Neighbor Authority (GNA) Requirements, con't (10/22)

Bidder certifies, by signing this bid form, that to the best of Bidder's knowledge that the following representations are accurate and complete.

- a. That the Bidder and its principals are not presently debarred, suspended, proposed for debarment, declared ineligible, or voluntary excluded from timber sales (covered transactions) by any Federal department or agency.
- b. That the Bidder and its principals have not within a 3-year period preceding this bid been convicted of or had a civil judgment rendered against them for commission of fraud or a criminal offense in connection with obtaining , attempting to obtain, or performing a public (Federal, State, or local) transaction or contract under a public transaction; violation of Federal or State antitrust statutes or commission of embezzlement, theft, forgery, bribery, falsification or destruction of records, making false statements, or receiving stolen property.
- c. That the Bidder and its principals are not presently indicted for or otherwise criminally or civilly charged by a governmental entity (Federal, State, or local) with commission of any of the offenses enumerated in paragraph b of this certification.
- d. That the Bidder and its principals have not within a 3-year period preceding this bid had one or more public transactions (Federal, State, or local) terminated for breach or default of a timber or forest product contract.

Bidders that cannot certify this requirement, in whole or in part, shall submit an explanation with their bid.

Scott Bowen
Director

TIMBER SALE INFORMATION

Triple F (73-006-24)

T17N, R05W, SEC. 27; T17N, R05W, SEC. 28; T17N, R05W, SEC. 29; T17N, R05W, SEC. 34.
Clare County (Advertised Price \$202,715.20)

SALE NOTE: A recreation site such as a trail, pathway, or campground is within the sale area or the vicinity. Certain restrictions/specifications may be applicable including time restrictions.

A timber sale contract for this lump sum, sealed bid timber sale will be awarded to the responsible bidder offering the highest sealed bid price. All units of volume listed below were estimated using the Inventory Manager computer program and the new Michigan taper model. Bids must be at or above the following advertised price for each product and species:

<u>PRODUCTS & SPECIES</u>	<u>ESTIMATED UNITS*</u>		<u>ADVERTISED PRICE</u>
Sawtimber			
B. T. Aspen	934.0	MBF	\$ 77.00 / MBF
Beech	2.9	MBF	\$ 124.00 / MBF
Black Cherry	2.5	MBF	\$ 154.00 / MBF
Black/Red (Hybrid) Oak	17.3	MBF	\$ 116.00 / MBF
Norway Spruce	23.8	MBF	\$ 54.00 / MBF
Red Maple	57.7	MBF	\$ 58.00 / MBF
Red Oak	62.0	MBF	\$ 146.00 / MBF
Red Pine	21.7	MBF	\$ 123.00 / MBF
Scotch Pine	35.4	MBF	\$ 44.00 / MBF
Sugar Maple	4.9	MBF	\$ 249.00 / MBF
White Pine	32.9	MBF	\$ 67.00 / MBF
Pulpwood			
B. T. Aspen	2,732	Cords	\$ 30.45 / Cord
Balsam Fir	13	Cords	\$ 22.85 / Cord
Mixed Hardwood	435	Cords	\$ 21.80 / Cord
Mixed Oak	248	Cords	\$ 23.10 / Cord
Mixed Spruce	176	Cords	\$ 23.00 / Cord
Paper Birch	13	Cords	\$ 24.75 / Cord
Red Pine	26	Cords	\$ 51.55 / Cord
Scotch Pine	73	Cords	\$ 16.20 / Cord
White Pine	40	Cords	\$ 28.00 / Cord

* The total volume is statistically estimated within plus (+) or minus (-) 9.58 percent. There are an estimated 6,556 cords on this timber sale, plus or minus 628 cords at the 95% confidence level. The estimated units are final and not subject to adjustment. Prospective bidders are urged to examine this timber and to make their own estimates of quantity and quality.

BOND AND PAYMENT SCHEDULE:

- A bond in the amount of \$10,136.00 to insure faithful performance of the conditions of the contract will be deposited by the successful bidder within 21 days of the sale award.
- Cutting in any sale or unit without the required advance payment would be considered a trespass.
- Total payment must be paid in advance or according to the following schedule :
 - Ten percent (10%) of the sale value must be paid within 21 days of the sale award.
 - The 10% down payment will be credited towards the first unit cut.
 - Payment for each of the following units must be made before cutting begins in that unit:

PAYMENT UNIT NUMBER	PERCENT OF TOTAL SALE VALUE
01	5.1%
02	4.3%
03	12.2%
04	76.2%
05	2.2%
- If no cutting takes place, the 10% down payment will not be refunded.
- Operations on the contract issued will terminate on 06/30/2028.

SALE STATISTICS

Volumes were calculated in cubic feet using the Michigan taper model. Cubic foot volume includes all wood inside bark for the product indicated. For display purposes, cubic feet were converted to cords and MBF using a simple conversion factor, e.g. 79 cubic feet per cord and 185 cubic feet per MBF. The cubic foot volumes are precise; the cords and MBF volumes are not. Cubic foot volume cannot be directly converted to cords or boards with precision.

SALE VOLUMES

The total estimated sale volume may not equal the sum of the species/products due to the nature of statistical calculations associated with double sampling methodology.

VOLUME			STATISTICAL RANGE IN CORDS	
TOTAL CUBIC FEET	TOTAL CORDS	PERCENT ERROR	MINIMUM	MAXIMUM
517,963	6,556	9.58%	5,928	7,185

VDU VOLUMES

A VDU is a Volume Determination Unit. Volumes and their associated statistics are calculated at the VDU level and summarized to the sale level. There is often a one to one relationship between a VDU and a Payment Unit, but not always, depending on the cruise design. Refer to the VDU TO PAYMENT UNIT table.

	VOLUME			RANGE IN CORDS	
VDU	TOTAL CUBIC FEET	TOTAL CORDS	PERCENT ERROR	MINIMUM	MAXIMUM
16	391,048	4,950	10.09%	4,450	5,450
59	34,919	442	50.45%	219	665
72	21,547	273	90.39%	26	519
83	60,450	765	25.97%	566	964
92	10,000	127	83.05%	21	232
TOTAL:	517,963	6,556		5,283	7,830

VDU TO PAYMENT UNIT

When a VDU is associated with more than one Payment Unit (PU), the VDU volumes are assigned to the PU based on acres of the VDU within the PU.

VDU	VDU ACRES	PU	PU ACRES
16	72.5	4	72.5
59	12.3	1	12.3
72	5.2	2	5.2
83	19.9	3	19.9
92	7.4	5	7.4
TOTAL:	117.3		117.3

DESCRIPTION OF TIMBER BY PAYMENT UNIT (PU)

PU	MARKET GROUP	PRODUCT	QUANTITY	UNIT	ACRES	ADVERTISE PRICE
1	B. T. Aspen	Sawtimber	5.4	MBF	12.3	\$10,301.10
	Black Cherry		1.8	MBF		
	Black/Red (Hybrid		6.7	MBF		
	Norway Spruce		19.4	MBF		
	Scotch Pine		33.0	MBF		
	B. T. Aspen	Pulpwood	31	Cords		
	Mixed Hardwood		17	Cords		
	<i>Black Cherry</i>		4	<i>Cords</i>		
	<i>Red Maple</i>		13	<i>Cords</i>		
	Mixed Oak		23	Cords		
	<i>/Red (Hybrid) Oak</i>		23	<i>Cords</i>		
	Mixed Spruce		141	Cords		
	<i>White Spruce</i>	Sawtimber	0.5	<i>MBF</i>		
	<i>Norway Spruce</i>		95	<i>Cords</i>		
	<i>White Spruce</i>		45	<i>Cords</i>		
	Paper Birch		7	Cords		
	<i>Paper Birch</i>	Sawtimber	1.4	<i>MBF</i>		
	<i>Paper Birch</i>		4	<i>Cords</i>		
	Scotch Pine	Pulpwood	66	Cords		
2	B. T. Aspen	Sawtimber	51.8	MBF	5.2	\$8,734.65
	Black/Red (Hybrid		2.5	MBF		
	Norway Spruce		4.4	MBF		
	Red Pine		7.8	MBF		
	White Pine		8.5	MBF		
	B. T. Aspen	Pulpwood	41	Cords		
	Balsam Fir		8	Cords		
	<i>Balsam Fir</i>	Sawtimber	1.8	<i>MBF</i>		
	<i>Balsam Fir</i>		4	<i>Cords</i>		
	Mixed Oak	Pulpwood	1	Cords		
	<i>/Red (Hybrid) Oak</i>		1	<i>Cords</i>		
	Mixed Spruce		35	Cords		
	<i>White Spruce</i>	Sawtimber	1.6	<i>MBF</i>		
	<i>Norway Spruce</i>		31	<i>Cords</i>		
	<i>White Spruce</i>		1	<i>Cords</i>		
	Red Pine	Pulpwood	4	Cords		
	White Pine		8	Cords		
3	B. T. Aspen	Sawtimber	99.6	MBF	19.9	\$24,806.60
	Beech		1.8	MBF		
	Black/Red (Hybrid		4.6	MBF		
	Red Maple		13.3	MBF		
	Red Oak		14.8	MBF		
	Red Pine	Pulpwood	13.9	MBF		
	Scotch Pine		2.4	MBF		
	White Pine		9.8	MBF		
	B. T. Aspen		189	Cords		
	Balsam Fir		5	Cords		
	<i>Balsam Fir</i>		5	<i>Cords</i>		
	Mixed Hardwood		40	Cords		
	<i>Beech</i>		2	<i>Cords</i>		
	<i>Red Maple</i>		38	<i>Cords</i>		
	Mixed Oak		112	Cords		
	<i>/Red (Hybrid) Oak</i>		25	<i>Cords</i>		
	<i>Red Oak</i>		85	<i>Cords</i>		
	<i>White Oak</i>		2	<i>Cords</i>		
	Paper Birch		6	Cords		
	<i>Paper Birch</i>	Sawtimber	1.7	<i>MBF</i>		

DESCRIPTION OF TIMBER BY PAYMENT UNIT (PU), CON'T

PU	MARKET GROUP	PRODUCT	QUANTITY	UNIT	ACRES	ADVERTISE PRICE
3 con't	<i>Paper Birch</i>	<i>Pulpwood</i>	3	<i>Cords</i>		
	Red Pine		22	Cords		
	Scotch Pine		7	Cords		
	White Pine		9	Cords		
4	B. T. Aspen	Sawtimber	768.9	MBF	72.5	\$154,385.35
	Beech		1.1	MBF		
	Red Maple		44.4	MBF		
	Red Oak		35.9	MBF		
	Sugar Maple		4.9	MBF		
	White Pine		14.6	MBF		
	B. T. Aspen	Pulpwood	2,457	Cords		
	Mixed Hardwood		351	Cords		
	<i>Basswood</i>		9	<i>Cords</i>		
	<i>Beech</i>		6	<i>Cords</i>		
	<i>Red Maple</i>		318	<i>Cords</i>		
	<i>Sugar Maple</i>		11	<i>Cords</i>		
	<i>White Ash</i>		7	<i>Cords</i>		
	Mixed Oak		83	Cords		
	<i>/Red (Hybrid) Oak</i>		26	<i>Cords</i>		
	<i>Red Oak</i>		52	<i>Cords</i>		
	<i>White Oak</i>		5	<i>Cords</i>		
	White Pine		23	Cords		
5	B. T. Aspen	Sawtimber	8.3	MBF	7.4	\$4,487.50
	Black Cherry		0.7	MBF		
	Black/Red (Hybrid		3.5	MBF		
	Red Oak		11.3	MBF		
	B. T. Aspen	Pulpwood	14	Cords		
	Mixed Hardwood		27	Cords		
	<i>Black Cherry</i>		5	<i>Cords</i>		
	<i>Red Maple</i>		22	<i>Cords</i>		
	Mixed Oak		29	Cords		
	<i>White Oak</i>	<i>Sawtimber</i>	2.8	<i>MBF</i>		
	<i>/Red (Hybrid) Oak</i>	<i>Pulpwood</i>	6	<i>Cords</i>		
	<i>Red Oak</i>		13	<i>Cords</i>		
	<i>White Oak</i>		4	<i>Cords</i>		
TOTAL:			1,195.1	MBF		
TOTAL:			3,756	Cords		

Sale Specific Conditions & Requirements

Sale Name: Triple F

Sale Number: 73-006-24 Seq#: 2

1 - Sale Area

1.2 - Boundaries

1.2.1 - Painted Boundaries (9/19)

The sale boundary and Payment Unit boundaries are marked and identified by blue and red paint. Exterior sale boundary lines against private property are marked with blue paint. Exterior sale boundary lines against state are marked with red paint. Retention patches are marked with red paint; no harvesting activities may occur within these areas. The painted boundary line trees are not Included Timber and are to be protected.

2 - Timber Specifications

2.1 - Included Timber

2.1.7 - Leave Tree Marked Unit(s) (6/14)

Within Payment Unit(s) 1-5, cut all trees that are two (2) inches or more at DBH, except do not cut trees marked with green paint above and below stump height.

2.2 - Utilization

2.2.9 - No Chipping Permitted (12/08)

Within Payment Unit(s) 2-5, all wood must be removed by whole tree, tree segment, or roundwood. No chipping is permitted.

3 - Payments

3.3 - Pre-measured Sales

3.3.4 - Dividing Payment Units (7/14)

Payment Unit(s) may be divided at the request of the Purchaser and upon approval of the Unit Manager. Dividing Payment Units is a contract modification which requires a Timber Sale Contract Amendment. There will be only one division per Payment Unit.

4 - Transportation

4.1 - Construction

4.1.6 - Road Construction (4/24)

Construction of new roads or improvements of existing roads shall be done in such a way as to minimize the environmental and visual impacts. Merchantable trees shall be cut and utilized unless otherwise directed. Non-merchantable trees shall be severed and laid flat on the ground. Slash shall be scattered, and not left in windrows and kept a minimum of 10 feet back from the road edge. Stumps shall be set upright, not left on edge, and be moved at least 10 feet away from the road edge. Disturbed soil shall be feathered into the woods and not left in berms or windrows.

4.1.7 - Road Closure (10/11)

All new roads built into the sale must be blocked to vehicle traffic upon completion of the sale. All new roads built into the sale must be blocked to vehicle traffic within 30 days of completion of hauling. Overgrown roads that are reopened shall be considered new roads. In general, this will require constructing a four (4') foot high berm of stumps and logs covered with earth. These roads must be rendered impassable to cars and trucks. All stumps from road building and landing construction must be reserved to block any newly constructed roads upon completion of the sale. These stumps must be scattered along the road system to prohibit vehicular movement. Contact the Sale Administrator for specific details of design and placement.

5 - Operations

5.2 - Conduct of Operations

5.2.1 - Slash

5.2.1.8 - Slash Height (12/08)

No slash or tree tops may exceed 24 inches in height.

5.2.2 - Hazard Trees/Snags

5.2.2.1 - Den Trees (10/16)

Obvious hollow and/or den trees shall be protected and left standing unless they are a safety hazard.

5.2.3 - Operating Restrictions

5.2.3.1 - Operating Restrictions (9/11)

Within Payment Unit(s) 2, unless changed by written agreement, cutting, skidding, and hauling are limited to snow free conditions. This restriction is to facilitate natural regeneration of spruce and fir.

5.2.4 - Dead and Down Creation

5.2.4.4 - Dead and Down Creation, Grouse (6/18)

To encourage grouse and other wildlife, in Payment Unit(s) 3 and 4, leave one 12-inch or larger diameter whole tree on the ground for every 3 acres. Trees should be scattered throughout the sale and at least two chains from any roads, two-tracks, or trails open to vehicles, or positioned per the Sale Administrator's instructions. Stumps must be at least 3 feet tall.

5.2.38 - No Decking Against Live Trees (2/04)

Cut products may not be decked against unmarked or designated leave trees.

5.4 - Soil Protection

5.4.4 - Slope Protection (9/19)

Skid trails and roads on slopes shall be water barred with slash, stumps, and/or clean straw bales native to the area as soon as use is complete to prevent erosion.

6 - Safety and Fire Prevention

6.2 - Signing

6.2.1 - Road Posting (10/20)

The Purchaser is responsible for posting and maintaining caution signs on Maple Grove, Bringold, and Washington prior to beginning operations. The road must be posted on the county road, approximately 100 yards from entrance to the Sale Area to warn of logging activity and truck traffic. Signs must be removed when harvest operations are suspended or completed. The Purchaser will provide these signs.

6.2.3 - Recreational Trail Posting (10/20)

The Purchaser is responsible for posting and maintaining caution signs on the Pere Marquette Rail Trail prior to beginning operations. The trail must be posted at appropriate distances from the Sale Area to warn of logging activity and truck traffic at both ends of the trail. Signs must be removed when harvest operations are suspended or completed. The Purchaser will provide these signs.



TIMBER SALE MAP

This information provided by authority of Part 525, 1994 PA 451, as amended.

Sale Number

73-006-24

Date

01/23/2025

Forest Management Unit

Gladwin Mgt Unit

County

Clare

Mapped By: Owens

Cruised By: Owens

Scale

1:7,920

Page

1

Of

3

Township
17N

Range
05W

Section(s) and
Subdivision(s)

Sec. 27 S1/2NW,W1/2NE; Sec. 28 SWSW; Sec. 29 S1/2NW,N1/2SW,N1/2SE,SESE; Sec. 34 NESW;

Cover Type

A = Aspen	J = Jack Pine	O = Oak	U = Upland Brush
B = Paper Birch	K = Rock	P = Lowland Poplar	UM = Upland Mix Forest
C = Cedar	L = Lowland Brush	Q = Mixed Swamp Conifer	V = Bog or Marsh
D = Treed Bog	LM = Lowland Mix Forest	R = Red Pine	W = White Pine
E = Swamp Hardwoods	M = Maple, Beech, Birch	S = Black Spruce	X = Non Stocked
F = Spruce/Fir	MC = Mixed Conifer	T = Tamarack	Y = Sand
G = Grass	MD = Mixed Deciduous	Z = Water	
H = Hemlock	N = Marsh		

Density

0 = Non Stocked	5 = Pole Timber Medium
1 = Seedling Sapling Poor	6 = Pole Timber Well
2 = Seedling Sapling Medium	7 = Saw Timber Poor
3 = Seedling Sapling Well	8 = Saw Timber Medium
4 = Pole Timber Poor	9 = Saw Timber Well

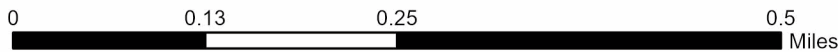
**Payment Unit
Number**

Acres

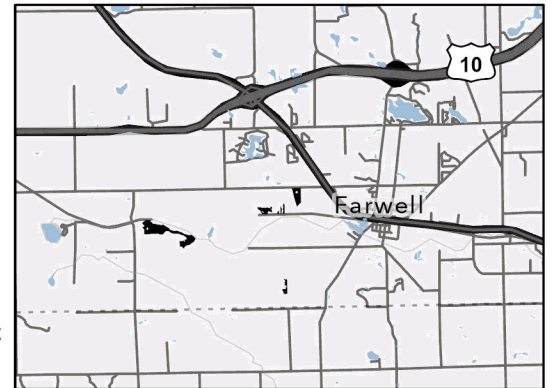
1	12.3
2	5.2
3	19.9
4	72.5
5	7.4

Triple F

117.3 Acres

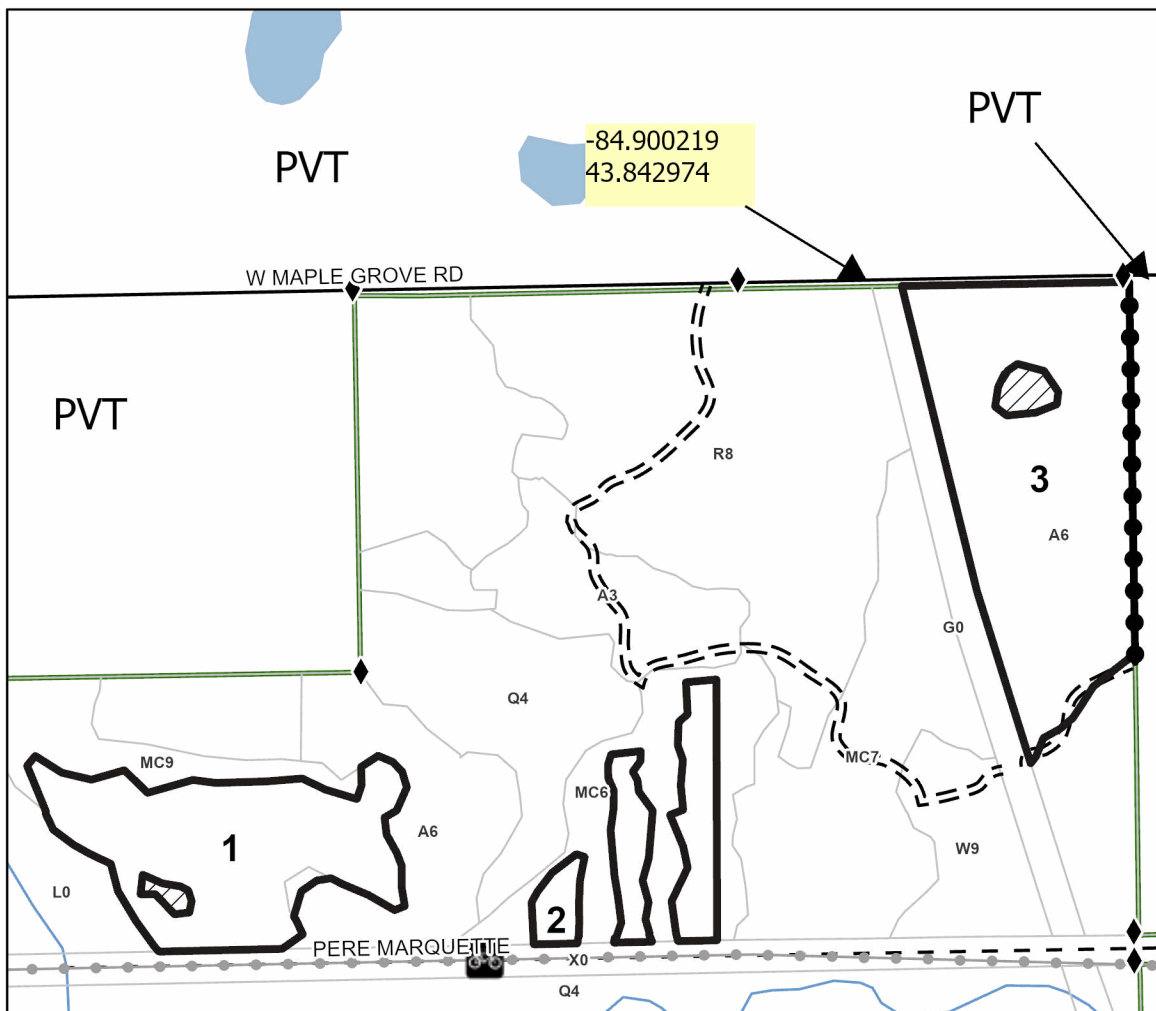


Locator Map 1:200,000



Legend

- Payment Unit
- Private Line (Blue)
- Forest Access Route
- Paved Road
- Private Gravel/Dirt
- Recreational Trails
- Survey Corner



Use QR Code to
open Map in App





TIMBER SALE MAP

This information provided by authority of Part 525, 1994 PA 451, as amended.

Sale Number

73-006-24

Date

01/23/2025

Forest Management Unit

Gladwin Mgt Unit

County

Clare

Mapped By: Owens

Cruised By: Owens

Scale

1:10,000

Page

2

Of

3

Township
17N

Range
05W

Section(s) and
Subdivision(s)

Sec. 27 S1/2NW,W1/2NE; Sec. 28 SWSW; Sec. 29 S1/2NW,N1/2SW,N1/2SE,SESE; Sec. 34 NESW;

Cover Type

A = Aspen	J = Jack Pine	O = Oak	U = Upland Brush
B = Paper Birch	K = Rock	P = Lowland Poplar	UM = Upland Mix Forest
C = Cedar	L = Lowland Brush	Q = Mixed Swamp Conifer	V = Bog or Marsh
D = Treed Bog	LM = Lowland Mix Forest	R = Red Pine	W = White Pine
E = Swamp Hardwoods	M = Maple, Beech, Birch	S = Black Spruce	X = Non Stocked
F = Spruce/Fir	MC = Mixed Conifer	T = Tamarack	Y = Sand
G = Grass	MD = Mixed Deciduous	Z = Water	
H = Hemlock	N = Marsh		

Density

0 = Non Stocked	5 = Pole Timber Medium
1 = Seedling Sapling Poor	6 = Pole Timber Well
2 = Seedling Sapling Medium	7 = Saw Timber Poor
3 = Seedling Sapling Well	8 = Saw Timber Medium
4 = Pole Timber Poor	9 = Saw Timber Well

Payment Unit Number

Acres

1	12.3
2	5.2
3	19.9
4	72.5
5	7.4

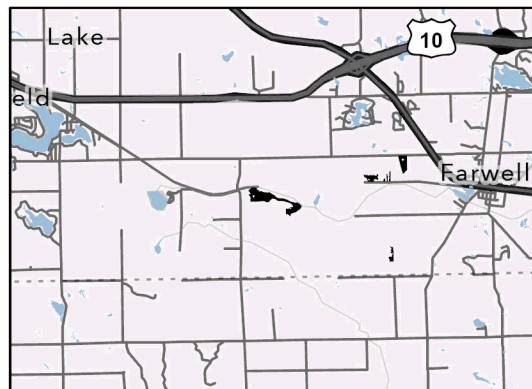
Triple F

117.3 Acres

0 0.15 0.3 0.6 Miles

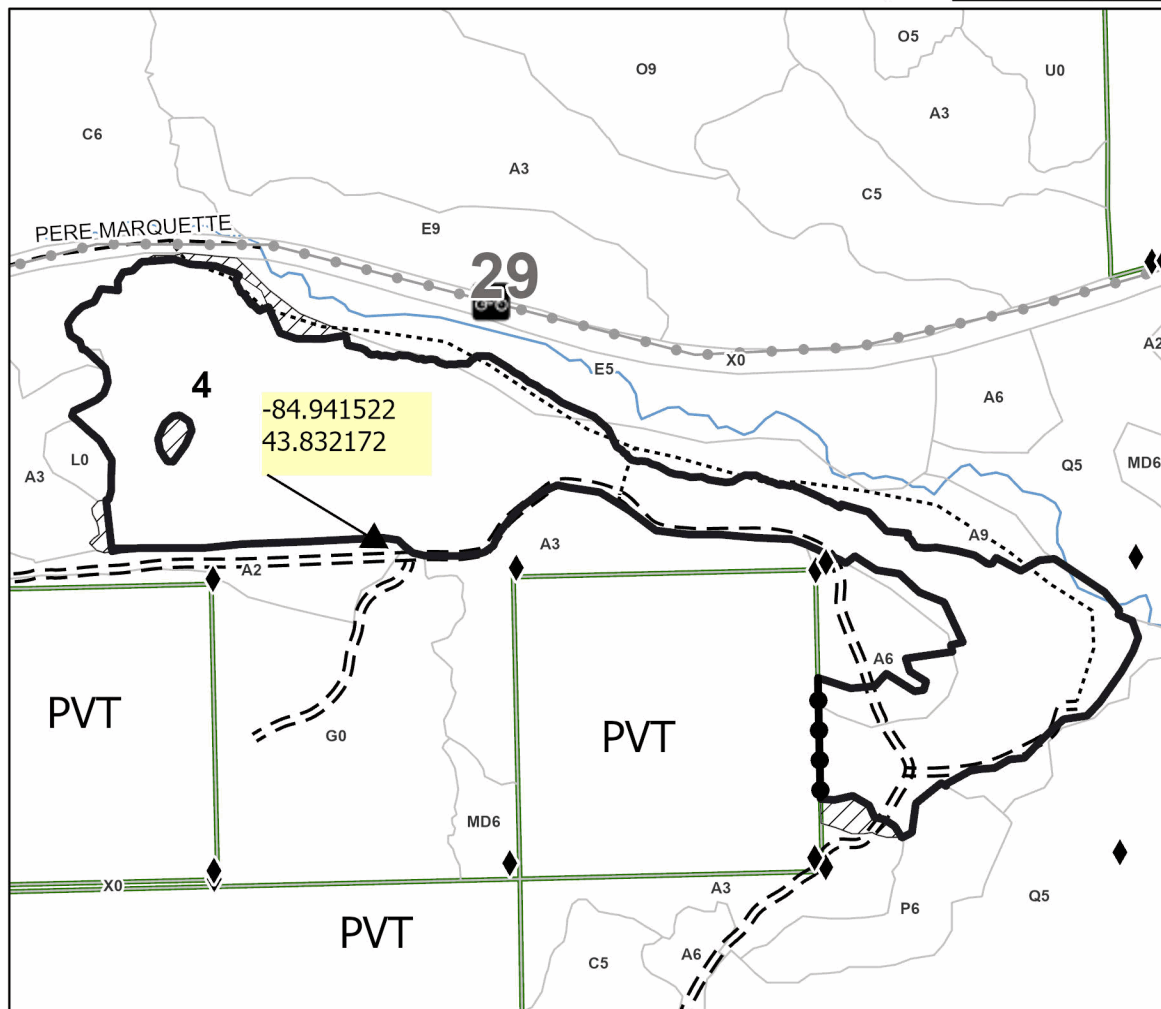


Locator Map 1:200,000



Legend

- Payment Unit
- Against State (Red)
- Private Line (Blue)
- Forest Access Route
- Administrative Access Only
- Private Gravel/Dirt
- Recreational Trails
- Field Grade Corner
- Survey Corner



Use QR Code to
open Map in App



**TIMBER SALE MAP**

This information provided by authority of Part 525, 1994 PA 451, as amended.

Sale Number

73-006-24

Date

01/23/2025

Forest Management Unit

County

Mapped By: Owens

Scale

Page

Of

Gladwin Mgt Unit

Clare

Cruised By: Owens

1:7,920

3

3

Township
17NRange
05WSection(s) and
Subdivision(s)

Sec. 27 S1/2NW,W1/2NE; Sec. 28 SWSW; Sec. 29 S1/2NW,N1/2SW,N1/2SE,SESE; Sec. 34 NESW;

Cover Type

A = Aspen	J = Jack Pine	O = Oak	U = Upland Brush
B = Paper Birch	K = Rock	P = Lowland Poplar	UM = Upland Mix Forest
C = Cedar	L = Lowland Brush	Q = Mixed Swamp Conifer	V = Bog or Marsh
D = Treed Bog	LM = Lowland Mix Forest	R = Red Pine	W = White Pine
E = Swamp Hardwoods	M = Maple, Beech, Birch	S = Black Spruce	X = Non Stocked
F = Spruce/Fir	MC = Mixed Conifer	T = Tamarack	Y = Sand
G = Grass	MD = Mixed Deciduous	Z = Water	
H = Hemlock	N = Marsh		

Density

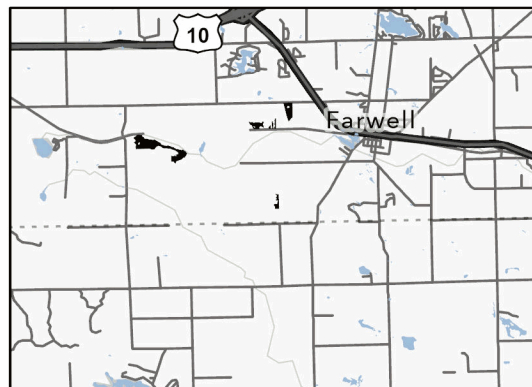
0 = Non Stocked	5 = Pole Timber Medium
1 = Seedling Sapling Poor	6 = Pole Timber Well
2 = Seedling Sapling Medium	7 = Saw Timber Poor
3 = Seedling Sapling Well	8 = Saw Timber Medium
4 = Pole Timber Poor	9 = Saw Timber Well

**Payment Unit
Number****Acres**

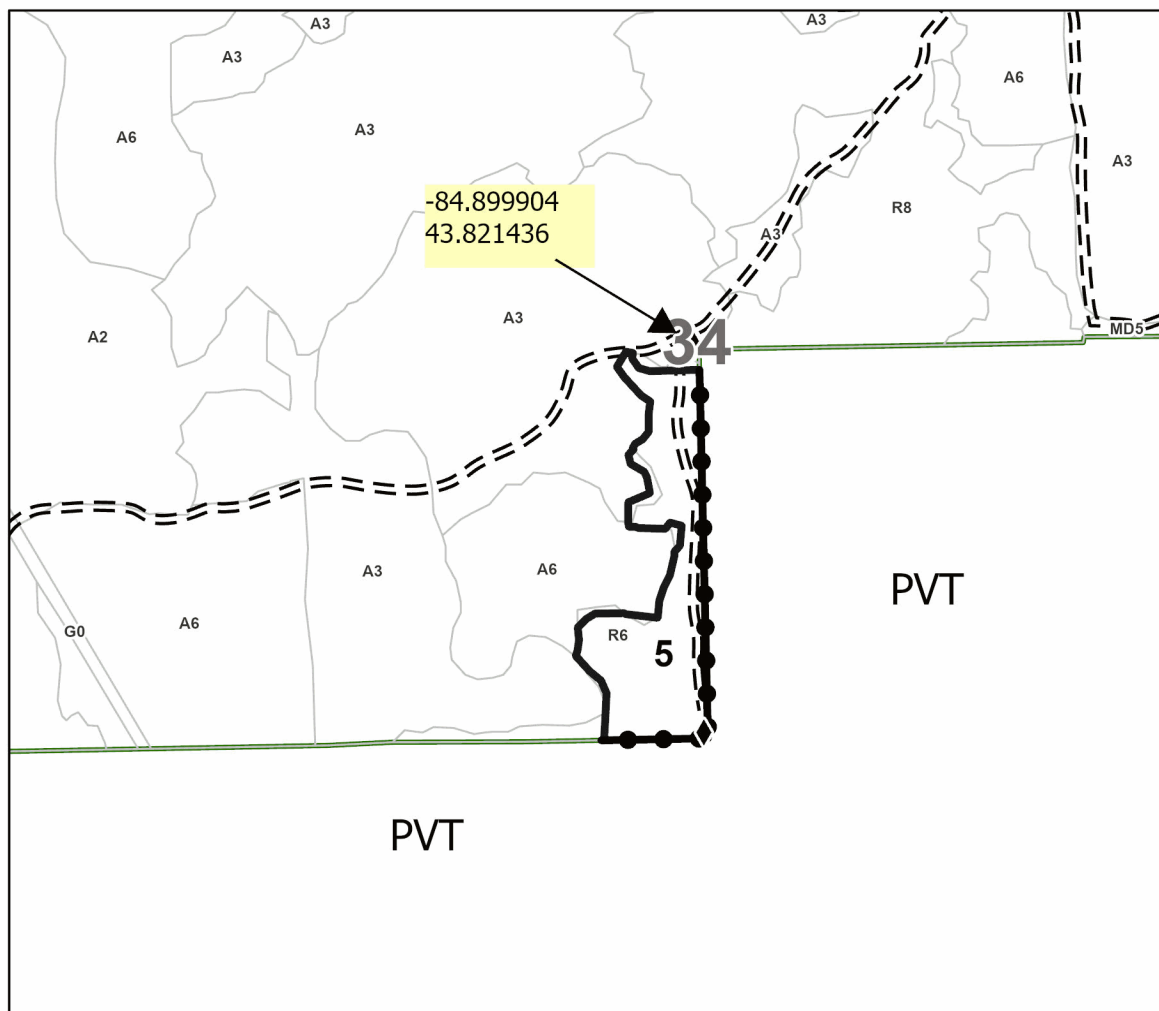
1	12.3
2	5.2
3	19.9
4	72.5
5	7.4

Triple F**117.3 Acres**

0 0.13 0.25 0.5 Miles

**Locator Map 1:200,000****Legend**

- Payment Unit
- Private Line (Blue)
- Forest Access Route
- Recreational Trails
- Survey Corner

Use QR Code to
open Map in App

Triple F (73-006-24)

T17N, R05W, SEC. 27; T17N, R05W, SEC. 28; T17N, R05W, SEC. 29; T17N,

In response to the notice of sale to be held 10:00 a.m. (local time) on April 22, 2025, I am hereby submitting my sealed bid (firm offer) for the following forest products to be cut. Bids for individual species must be at or above the advertised price. All non-responsive bid forms may be rejected.

<u>PRODUCTS & SPECIES</u>	<u>ESTIMATED VOLUME*</u>	<u>ADVERTISED PRICE</u>	<u>BID PRICE/UNIT</u>
Sawtimber			
B. T. Aspen	934.0 MBF	\$ 77.00/MBF	\$ _____
Beech	2.9 MBF	\$ 124.00/MBF	\$ _____
Black Cherry	2.5 MBF	\$ 154.00/MBF	\$ _____
Black/Red (Hybrid) Oak	17.3 MBF	\$ 116.00/MBF	\$ _____
Norway Spruce	23.8 MBF	\$ 54.00/MBF	\$ _____
Red Maple	57.7 MBF	\$ 58.00/MBF	\$ _____
Red Oak	62.0 MBF	\$ 146.00/MBF	\$ _____
Red Pine	21.7 MBF	\$ 123.00/MBF	\$ _____
Scotch Pine	35.4 MBF	\$ 44.00/MBF	\$ _____
Sugar Maple	4.9 MBF	\$ 249.00/MBF	\$ _____
White Pine	32.9 MBF	\$ 67.00/MBF	\$ _____
Pulpwood			
B. T. Aspen	2,732 Cords	\$ 30.45/Cord	\$ _____
Balsam Fir	13 Cords	\$ 22.85/Cord	\$ _____
Mixed Hardwood	435 Cords	\$ 21.80/Cord	\$ _____
Mixed Oak	248 Cords	\$ 23.10/Cord	\$ _____
Mixed Spruce	176 Cords	\$ 23.00/Cord	\$ _____
Paper Birch	13 Cords	\$ 24.75/Cord	\$ _____
Red Pine	26 Cords	\$ 51.55/Cord	\$ _____
Scotch Pine	73 Cords	\$ 16.20/Cord	\$ _____
White Pine	40 Cords	\$ 28.00/Cord	\$ _____

*The volumes are statistically estimated within plus (+) or minus (-) 9.58 percent at 95% confidence level. These estimated volumes are final and not subject to adjustment. Prospective bidders are urged to examine this timber and to make their own estimates of quantity and quality.

I understand that any or all bids may be rejected. All bids must be signed and all bid items must be bid or the bid form may be rejected. I also understand that consideration and awarding a contract will be based upon my past performance and ability to complete the contract based upon equipment and staffing subject to my control.

FEDERAL ID: ____ - ____ or SOCIAL SECURITY NUMBER: ____ - ____ - ____
 Company or individual bidding: _____
 Company representative's name: _____
 Address: _____
 City: _____ State: _____ Zip: _____

IF AVAILABLE, PLEASE PLACE THE PERSONALIZED LABEL FROM YOUR PROSPECTUS IN THE ABOVE BOX.

Individual or company representative's signature: _____ Date: _____

Phone number : _____ Email (optional): _____

THE WINNING BIDDER MUST COMPLETE THE VERIFICATION OF WORKER'S DISABILITY COMPENSATION ACT COMPLIANCE (ON REVERSE SIDE IF DOUBLE SIDED) WITHIN 21 DAYS OF SALE AWARD DATE



TIMBER SALE VERIFICATION OF WORKER'S DISABILITY COMPENSATION ACT COMPLIANCE

As required by Act 317, P.A. 1969 (Worker's Compensation) and
Part 5 of Act 451 of 1994, as amended.

FOR DEPARTMENT USE ONLY

Sale Number (XX - XXX - XX - XX)

Forest Management Unit:

VERIFICATION OF WORKER'S DISABILITY COMPENSATION ACT COMPLIANCE

- This verification must be completed and submitted within 21 days of contract award and prior to the issuance of the timber sale contract.
- In addition, if boxes 2B or 2C are checked, then Notice of Exclusion or Certificate of Insurance must be submitted within twenty-one (21) days of the contract award and prior to the issuance of the timber sale contract.
- All information must be typed or printed except for written signatures.

Please Check Appropriate Categories:

1. My business is organized as (you **must** check one of the boxes below):
 - A. ☐ Sole Proprietorship (individual)
 - B. ☐ Partnership
 - C. ☐ Corporation
2. You **must** check one of the boxes below:
 - A. ☐ I certify my business is a sole proprietorship and it has no employees but the sole proprietor. I am not subject to the Worker's Compensation Laws.
 - B. ☐ I certify my business has satisfied its obligation to the Worker's Compensation Act through the use of an approved Notice of Exclusion (BWC-337, Rev. 5/96). I will provide a copy of the Notice of Exclusion within 21 days of the contract award. (For questions or a copy of the BWC-337, please call the Worker's Compensation Bureau at 517-322-1195).
 - C. ☐ I certify my business has a Worker's Compensation Policy. I will provide an original Certificate of Insurance within twenty-one (21) days of the contract award.
3. If you have checked item 2(A) or 2(B), you **must** indicate the number of **both** full-time and part-time employees, other than yourself, including family members and active partners (if none, you must enter "0").

_____ Full-time Employees

_____ Part-time Employees

Name of Business		Federal ID (or) Social Security No.
Address		Telephone ()
City	State	ZIP

I hereby certify that the above information is true and correct. I agree to notify the Michigan DNR of any changes that occur in factors affecting my coverage during any of my present and future operations.

Signature of Owner or Authorized Representative

Title

Date

Please complete the "SEALED BID" information on the next page