



**DEPARTMENT OF NATURAL RESOURCES
STATE OF MICHIGAN
TIMBER SALE PROSPECTUS #7626**

SCHEDULED SALE DATE AND TIME: 2:00 p.m. (local time) on August 18, 2025.

LOCATION: GWINN MGMT UNIT, 410 WEST M 35, GWINN, MI 49841.

PROSPECTUS NOTE: The bidder is advised to inspect the sale area and review the location, estimated volumes, operating costs and contract terms of proposed sales. Please be aware that some landowners may request 60 days or more notice for access across their land.

Notice is hereby given that bids will be received by the Unit Manager, GWINN MANAGEMENT UNIT, for certain timber on the following described lands:

Skid Plate (32-001-25) / T45N, R26W, SEC. 18, NWNW.

T45N, R26W, SEC. 7 , NWSW,S1/2SW.

T45N, R27W, SEC. 11, SESE.

T45N, R27W, SEC. 12, S1/2SW,SESE.

T45N, R27W, SEC. 13, N1/2NW.

Marquette County, Advertised Price \$17,153.85, 57.0 Acres, Hardwood, Aspen.

SALE NOTE: This sale has operation caution and operation restriction specs. This sale is difficult to access and may require a fair amount of road work to complete.

565 Crooked Chains (32-012-25) / T45N, R26W, SEC. 16, NWNW,S1/2NW,SWNE,N1/2SW,SESW.

T45N, R26W, SEC. 16, SE.

T45N, R26W, SEC. 21, NENW,NWNE.

T45N, R26W, SEC. 9 , E1/2NW,S1/2NE,NESW,N1/2SE.

Marquette County, Advertised Price \$167,685.90, 214.6 Acres, Red Pine, Aspen.

SALE NOTE: This sale has operation restriction specs due to bark slippage and oak wilt. The Bass Lake motorcycle trail runs through a portion of this sale.

A recreation site such as a trail, pathway, or campground is within the sale area or the vicinity. Certain restrictions/specifications may be applicable including time restrictions.

BID INSTRUCTIONS (VER. 10/10/2022):

1. Scheduled Bid Location, Date, and Time (2/11)

Bids must be received by the Unit Manager, GWINN OFFICE, 410 WEST M 35, GWINN, MI 49841, no later than 2:00 p.m. (local time) on August 18, 2025. For further information concerning this sale, contact Mike Brodeur at 906-346-9201 extension 103.

2. Bidder's Qualifications (10/22)

If all or part of a timber sale was prepared by a private contractor, the contractor and that contractor's company are not permitted to bid on the timber sale. A person must be 18 years of age or older to purchase timber. Permanent employees of the Department of Natural Resources or members of their immediate household may not bid. Former employees, in the permanent or seasonal class, may not bid until 3 months after the last day of active duty. Bids will not be accepted from individuals or companies appearing on the DNR/FRD No-Bid List. This list contains the names of purchasers who previously failed to execute a contract within 21-days or who have a history of poor performance.

3. Preparation of Sealed Bids (5/16)

Bid Forms may be completed online thru Michigan DNR Timber Sale Online Bidding (OLB) at www.michigan.gov/timberbidding or by completing the hardcopy Bid Form found in the Timber Sale Prospectus. Hardcopy Bid Forms shall be manually signed in ink. Registration in OLB is considered your 'signature' for all bids submitted thru that system. Bid prices must be entered for each species and product in the Bid Price column for all material subject to bidding and all fill-in blanks must be completed. If erasures or other changes appear on the hardcopy Bid Form, each erasure or change must be initialed by the person signing the bid.

4. Submission of Sealed Bids (5/16)

Bid forms may be obtained from the Unit Manager or thru OLB. Bids may be submitted hardcopy or thru OLB. All hardcopy bids must be submitted on the bid form and in an envelope clearly identified as described in this section. NOTE: Only one bid form per bid envelope. Sealed bids must be submitted to the Unit office designated in the prospectus and must be submitted at or prior to the time established in the prospectus. The envelope should show on the outside (a) the sale name or number and (b) the date and time of bid opening, as shown in the prospectus. Bids received after the time specified in the sale prospectus are late bids and will be rejected.

It is possible for a bidder to submit multiple bids on a single sale. For example, a bid may be submitted hardcopy and a bid may be submitted thru OLB. Or, two bidders from the same company could both submit bids on the same sale. If this were to happen, the State would accept all bids received and award the contract accordingly. All bidding and contractual requirements would apply to all bids received.

5. Public Opening of Sealed Bids (7/16)

If conditions permit, the sealed bids will be publicly opened and posted at the time and place set in the prospectus.

If a bidder, present at a bid opening, has submitted bids on more than one sale, that bidder may withdraw their unopened bid envelopes or announce the withdrawal of their online bid after being declared the successful bidder on one sale.

6. Award of Contract (1/11)

Award of the contract will be made to the Bidder whose bid, conforming to the prospectus, is most advantageous to the State of Michigan on the basis of total value at rates bid for the estimated quantities. The State reserves the right to reject any bid or waive any minor irregularity in bids received. A written award mailed (or otherwise furnished) to the successful Bidder shall be deemed to result in a binding contract without further action by either party.

7. Down Payment (1/11)

The Bidder to whom award is made must make a down payment within 21 days of the sale award. The amount of the down payment will be calculated as shown in the Bond and Payment Schedule of this prospectus. Only cash may be used to meet this requirement.

8. Performance Security (1/11)

As guarantee of faithful performance, a cash bond, certificate of deposit, surety bond or irrevocable letter of credit (LOC) is required within 21 days of the sale award. The amount of the performance security is shown in the Bond and

Payment Schedule of this prospectus. If an LOC or surety is used, the coverage must extend for at least 6 months beyond the contract expiration.

9. Worker's Compensation (10/22)

Purchaser shall obtain worker's compensation insurance to cover claims under Michigan's Worker's Disability Compensation Act of 1969 or similar employee benefit act of any other state applicable to an employee. Verification of Worker's Disability Compensation Act Compliance must be completed and submitted within 21 days of contract award and prior to the issuance of the timber sale contract. In addition, if applicable, Notice of Exclusion or Certificate of Insurance must also be submitted.

10. Timber Sale Contract (10/22)

Additional conditions and requirements common to all timber sales are listed on the timber sale contract (R4031) and are available on line at www.michigan.gov/timber. Contact the Unit Manager for additional information or a sample contract. Within 21 days of the date of the award letter, the bidder must sign the contract and provide the required down payment, performance security, and verification of worker's disability compensation. The down payment and performance security shall be in accordance with the provisions of the timber sale contract, in the sums stated in this prospectus. If these actions are not taken, then the Bidder, the Bidder's corporation, and the corporation's principals may not be permitted to bid on State timber sales for a period of 3 months after the first offense, 6 months after the second offense, and 1 year after the third offense. An offense will only be counted against the Bidder for 5 years. In addition, the Bidder certifies that if awarded this contract, the Bidder will complete the timber sale contract in accordance with its terms and any modifications thereof including requirements to purchase, cut, and remove the included timber by the expiration date.

Payment Unit values in the State Forest Timber Sale Contract are calculated based on the advertised value of the Payment Unit as a percentage of the total advertised value of the contract. The advertised value of each Payment Unit is given in the Description of Timber by Payment Unit table on the Timber Sale Information page. For example, if the value of Payment Unit 1 is advertised as \$1,500 and the total Timber Sale value is advertised as \$10,000, the contract price for Payment Unit 1 will be 15% of the total bid price ($\$1,500/\$10,000 * 100$).

11. Disclaimer of Estimates and Bidder's Warranty of Inspection (10/22)

Before submitting this bid, the Bidder is advised and cautioned to inspect the sale area, review the requirements of the sale contract, and take other steps as may be reasonably necessary to ascertain the location, estimated volumes, construction estimates, and operating costs of the proposed sale. Failure to do so will not relieve the Bidder from responsibility for completing the contract.

The Bidder warrants that this bid is submitted solely on the basis of the Bidder's examination and inspection of the quality and quantity of the timber offered for sale and the Bidder's opinion of the value thereof and the costs of recovery. No reliance should be placed on the State of Michigan's estimates of timber quality, quantity or costs of recovery. Bidder further acknowledges that the State of Michigan: (i) expressly disclaims any warranty of fitness of timber for any purpose; (ii) offers this timber as is without any warranty of quality (merchantability) or quantity and (iii) expressly disclaims any warranty as to the quantity or quality of timber sold.

12. Certification and Chain-of-Custody (10/22)

Unless otherwise indicated in the contract under section 7 – Other Conditions of the Sale Specific Conditions & Requirements, the area encompassed by this timber sale is certified to the standards of the Forest Stewardship Council (FSC) - Certificate #SCS-FM/COC-00090N and the Sustainable Forestry Initiative (SFI) - Certificate #NSF-SFIS-5Y031-SF5. Forest products from this sale may be delivered to the mill as "FSC 100% and / or SFI certified" as long as the contractor hauling the forest products is chain-of-custody (COC) certified or covered under a COC certificate from the destination mill. The purchaser is responsible for maintaining COC after leaving the sale area.

13. Good Neighbor Authority (GNA) Requirements (10/22)

If the name of this timber sales contains the acronym GNA, it is authorized by the Good Neighbor Authority (GNA) and covered by various agreements between the U.S. Forest Service and the State. The timber sale occurs on federal land and the following conditions apply:

GNA contracts on US Forest Service land will not be awarded to purchasers on the Federal list of excluded parties. The System for Award Management (SAM) will be checked for active excluded parties prior to award of contract. In

addition, the Bidder to whom award is made must complete an Assurance Regarding Felony Conviction or Tax Delinquent Status for Corporate Applicants (AD-3031).

14. Good Neighbor Authority (GNA) Requirements, con't (10/22)

Bidder certifies, by signing this bid form, that to the best of Bidder's knowledge that the following representations are accurate and complete.

- a. That the Bidder and its principals are not presently debarred, suspended, proposed for debarment, declared ineligible, or voluntary excluded from timber sales (covered transactions) by any Federal department or agency.
- b. That the Bidder and its principals have not within a 3-year period preceding this bid been convicted of or had a civil judgment rendered against them for commission of fraud or a criminal offense in connection with obtaining , attempting to obtain, or performing a public (Federal, State, or local) transaction or contract under a public transaction; violation of Federal or State antitrust statutes or commission of embezzlement, theft, forgery, bribery, falsification or destruction of records, making false statements, or receiving stolen property.
- c. That the Bidder and its principals are not presently indicted for or otherwise criminally or civilly charged by a governmental entity (Federal, State, or local) with commission of any of the offenses enumerated in paragraph b of this certification.
- d. That the Bidder and its principals have not within a 3-year period preceding this bid had one or more public transactions (Federal, State, or local) terminated for breach or default of a timber or forest product contract.

Bidders that cannot certify this requirement, in whole or in part, shall submit an explanation with their bid.

Scott Bowen
Director

TIMBER SALE INFORMATION

Skid Plate (32-001-25)

T45N, R26W, SEC. 18; T45N, R26W, SEC. 7; T45N, R27W, SEC. 11; T45N, R27W, SEC. 12; T45N, R27W, SEC. 13.
Marquette County (Advertised Price \$17,153.85)

SALE NOTE: This sale has operation caution and operation restriction specs. This sale is difficult to access and may require a fair amount of road work to complete.

A timber sale contract for this lump sum, sealed bid timber sale will be awarded to the responsible bidder offering the highest sealed bid price. All units of volume listed below were estimated using the Inventory Manager computer program and the new Michigan taper model. Bids must be at or above the following advertised price for each product and species:

<u>PRODUCTS & SPECIES</u>	<u>ESTIMATED UNITS*</u>	<u>ADVERTISED PRICE</u>
Sawtimber		
Paper Birch	17.6 MBF	\$ 86.00 / MBF
Red Maple	7.1 MBF	\$ 87.00 / MBF
Sugar Maple	4.2 MBF	\$ 187.00 / MBF
Pulpwood		
Balsam Fir	29 Cords	\$ 8.60 / Cord
Jack Pine	4 Cords	\$ 29.80 / Cord
Mixed Aspen	305 Cords	\$ 22.95 / Cord
Mixed Hardwood	657 Cords	\$ 9.85 / Cord
Mixed Spruce	27 Cords	\$ 8.65 / Cord
Tamarack	14 Cords	\$ 11.70 / Cord

* The total volume is statistically estimated within plus (+) or minus (-) 18.42 percent. There are an estimated 1,105 cords on this timber sale, plus or minus 204 cords at the 95% confidence level. The estimated units are final and not subject to adjustment. Prospective bidders are urged to examine this timber and to make their own estimates of quantity and quality.

BOND AND PAYMENT SCHEDULE:

- A bond in the amount of \$5,000.00 to insure faithful performance of the conditions of the contract will be deposited by the successful bidder within 21 days of the sale award.
- Cutting in any sale or unit without the required advance payment would be considered a trespass.
- Total payment must be paid in advance or according to the following schedule :
 - Ten percent (10%) of the sale value must be paid within 21 days of the sale award.
 - The 10% down payment will be credited towards the first unit cut.
 - Payment for each of the following units must be made before cutting begins in that unit:

PAYMENT UNIT NUMBER	PERCENT OF TOTAL SALE VALUE
01	3.6%
02	46.5%
03	49.9%
- If no cutting takes place, the 10% down payment will not be refunded.
- Operations on the contract issued will terminate on 06/30/2029.

SALE STATISTICS

Volumes were calculated in cubic feet using the Michigan taper model. Cubic foot volume includes all wood inside bark for the product indicated. For display purposes, cubic feet were converted to cords and MBF using a simple conversion factor, e.g. 79 cubic feet per cord and 185 cubic feet per MBF. The cubic foot volumes are precise; the cords and MBF volumes are not. Cubic foot volume cannot be directly converted to cords or boards with precision.

SALE VOLUMES

The total estimated sale volume may not equal the sum of the species/products due to the nature of statistical calculations associated with double sampling methodology.

VOLUME		STATISTICAL RANGE IN CORDS		
TOTAL CUBIC FEET	TOTAL CORDS	PERCENT ERROR	MINIMUM	MAXIMUM
87,308	1,105	18.42%	902	1,309

VDU VOLUMES

A VDU is a Volume Determination Unit. Volumes and their associated statistics are calculated at the VDU level and summarized to the sale level. There is often a one to one relationship between a VDU and a Payment Unit, but not always, depending on the cruise design. Refer to the VDU TO PAYMENT UNIT table.

	VOLUME			RANGE IN CORDS	
VDU	TOTAL CUBIC FEET	TOTAL CORDS	PERCENT ERROR	MINIMUM	MAXIMUM
33	2,355	30	89.40%	3	56
43	39,569	501	28.39%	359	643
47	45,384	574	25.72%	427	722
TOTAL:	87,308	1,105		789	1,422

VDU TO PAYMENT UNIT

When a VDU is associated with more than one Payment Unit (PU), the VDU volumes are assigned to the PU based on acres of the VDU within the PU.

VDU	VDU ACRES	PU	PU ACRES
33	2.7	1	2.7
43	22.9	2	22.9
47	31.4	3	31.4
TOTAL:	57.0		57.0

DESCRIPTION OF TIMBER BY PAYMENT UNIT (PU)

PU	MARKET GROUP	PRODUCT	QUANTITY	UNIT	ACRES	ADVERTISE PRICE
1	Paper Birch	Sawtimber	0.9	MBF	2.7	\$617.95
	Red Maple		0.6	MBF		
	Sugar Maple		1.4	MBF		
	Mixed Hardwood	Pulpwood	23	Cords		
	Ironwood		2	Cords		
	Paper Birch		5	Cords		
	Red Maple		9	Cords		
	Sugar Maple		7	Cords		
2	Paper Birch	Sawtimber	12.1	MBF	22.9	\$7,978.60
	Red Maple		0.7	MBF		
	Sugar Maple		2.8	MBF		
	Balsam Fir	Pulpwood	28	Cords		
	Mixed Aspen		138	Cords		
	Balsam Poplar		10	Cords		
	Quaking Aspen		128	Cords		
	Mixed Hardwood		271	Cords		
	Paper Birch		31	Cords		
	Red Maple		163	Cords		
	Sugar Maple		77	Cords		
	Mixed Spruce		13	Cords		
	Black Spruce		6	Cords		
	White Spruce		7	Cords		
	Tamarack		14	Cords		
	3	Paper Birch	Sawtimber	4.6		
Red Maple			5.8	MBF		
Balsam Fir		Pulpwood	1	Cords		
Jack Pine			4	Cords		
Mixed Aspen			167	Cords		
B. T. Aspen			22	Cords		
Quaking Aspen			145	Cords		
Mixed Hardwood			363	Cords		
Black Cherry			2	Cords		
Paper Birch			69	Cords		
Red Maple			266	Cords		
Sugar Maple			26	Cords		
Mixed Spruce			14	Cords		
Black Spruce			6	Cords		
White Spruce			8	Cords		
TOTAL:			28.9	MBF		
TOTAL:			1,036	Cords		

Sale Specific Conditions & Requirements

Sale Name: Skid Plate

Sale Number: 32-001-25 Seq#: 1

1 - Sale Area

1.2 - Boundaries

1.2.1 - Painted Boundaries (9/19)

The sale boundary and Payment Unit boundaries are marked and identified by red and yellow paint. Exterior sale boundary lines against state are marked with red paint. Interior Payment Unit boundaries are marked with yellow paint. The painted boundary line trees are not Included Timber and are to be protected unless marked with orange paint. Yellow painted trees designating an interior Payment Unit boundary are only to be cut when all surrounding Payment Units have been paid.

2 - Timber Specifications

2.1 - Included Timber

2.1.1 - Clearcut Unit(s) with Unmerchantable Trees (6/14)

Within Payment Unit(s) 2, cut all trees that are two (2) inches or more at DBH, except do not cut any white pine, red pine, oak, hemlock, or cedar.

2.1.3 - Cut Tree Marked Unit(s) (12/08)

Within Payment Unit(s) 1, all trees are designated for cutting when marked with orange paint above and below stump height, regardless of merchantability.

2.1.7 - Leave Tree Marked Unit(s) (6/14)

Within Payment Unit(s) 3, cut all trees that are two (2) inches or more at DBH, except do not cut red pine, white pine, oak, cedar, or trees marked with green paint above and below stump height.

3 - Payments

3.4 - Damaged Timber

3.4.1 - Damaged timber (7/16)

General Condition and Requirement 3.4 Damaged Timber, defines liquidated damages for undesignated live merchantable trees which are cut or injured. In addition, extreme care should be taken to avoid damage to tree seedlings and saplings.

No damage is acceptable to undesignated live merchantable trees. Within the Sale Area, if more than 10% of trees (> 4.5" DBH) within a specified area of the sale are damaged, liquidated damages will be assessed for all trees damaged. Rates will be in accordance with General Condition and Requirement 3.4 Damaged Timber.

4 - Transportation

4.1 - Construction

4.1.1 - Stream crossings, general (3/11)

All stream crossing structures will be temporary and therefore, shall be provided by the Purchaser, and must be removed upon completion of the sale. All permits for stream crossings will be provided by the DNR.

4.1.2 - Stream Crossings, Specific (3/11)

Unless changed by written agreement, crossing the Bear Creek tributary north of Payment Unit 3, detailed on sale map, will not be permitted.

4.1.4 - Timber Removed for Construction (3/23)

Trees cut or damaged in the process of pre-approved road, landing, or skid trail construction will be decked in an area separate from other Designated Timber and not removed until measured by the Sale Administrator. Payment will be made at contract prices or average prices, if not on the contract.

4.1.6 - Road Construction (4/24)

All new roads must be approved by the Unit Manager or his/her representative. Construction of new roads or improvements of existing roads shall be done in such a way as to minimize the environmental and visual impacts. Merchantable trees shall

be cut and utilized unless otherwise directed. Non-merchantable trees shall be severed and laid flat on the ground. Slash shall be scattered, and not left in windrows and kept a minimum of 10 feet back from the road edge. Stumps shall be set upright, not left on edge, and be moved at least 10 feet away from the road edge. Disturbed soil shall be feathered into the woods and not left in berms or windrows.

4.1.7 - Road Closure (10/11)

All new roads built into the sale must be blocked to vehicle traffic upon completion of the sale. Overgrown roads that are reopened shall be considered new roads. Some existing roads may also need to be closed, contact Sale Administrator for details. In general, this will require constructing a four (4') foot high berm of stumps and logs covered with earth. Temporary berms may be required if no sale activity occurs for 30 or more consecutive days. Contact the Sale Administrator for specific details of design and placement.

4.2 - Maintenance

4.2.1 - Hauling Restriction (12/08)

Hauling may be restricted on forest roads by the Unit Manager or his/her representative. The restriction may occur during spring breakup.

4.2.2 - Fill Material (4/07)

To maintain roads, fill material may be needed in areas where "holes" exist or may be expected to develop. This fill material should be placed before trucking begins. Contact the Sale Administrator regarding the availability of onsite sand or gravel from adjacent State-owned lands.

5 - Operations

5.1 - Notification

5.1.1 - Pre-sale Conference (10/16)

A pre-sale conference on site between the Purchaser and Sale Administrator is required prior to beginning any operations. The Unit Manager or his/her representative must be contacted at least 5 days in advance to schedule the conference.

5.2 - Conduct of Operations

5.2.1 - Slash

5.2.1.13 - Dispose of Slash as Directed (12/05)

Slash is to be disposed of as directed by the Sale Administrator.

5.2.3 - Operating Restrictions

5.2.3.3 - Bark Slippage Restriction (3/09)

Within Payment Unit(s) 1, unless changed by written agreement, cutting and skidding are not permitted during the period of April 15 to July 15. This restriction is because of bark slippage.

5.2.3.4 - Oak Wilt Restriction, No Exceptions (1/18)

Within Payment Units 1 and 3, cutting, skidding, brushing, and road establishment within the Payment Unit are not permitted during the period of April 15 to July 15. No exceptions will be granted. In addition, brushing of access roads may not be permitted from April 15 to July 15 if Sale Administrator determines brushing will increase risk of oak wilt. This is necessary to reduce the spread of oak wilt.

5.2.22 - Operating Caution

5.2.22.1 - Operating Caution (6/11)

It is recommended, but not required, that within Payment Unit(s) 2, cutting, skidding, and hauling occur during dry summer or frozen winter conditions. The reason for the recommendation is because of wet ground conditions.

5.2.32 - Decking/Landing Restoration (9/13)

All decking and landing areas must have the surface area restored to a condition equal to or better than before. This is to ensure the proper regeneration of the stand. Wood debris, chips and "cookies" from trimmings must be removed or scattered away from landing and loading areas and may not be windrowed on the edge.

5.4 - Soil Protection

5.4.1 - Rutting Restriction, General (7/16)

Operations are to cease immediately if equipment and weather conditions result in rutting of roads and/or skid trails which is 12 inches or greater in depth and 50 feet in length. The Unit Manager or his/her representative may restrict hauling and/or skidding if ruts exceed the specified depth. With the Unit Manager or his/her representative's approval, the Purchaser may return to the area when the risk of rutting has decreased.

5.4.2 - Skid Trails (2/04)

Skid trails up and down slopes should be avoided. If, however, this is unavoidable, these trails will be left in a non-erodible condition using water bars, logs, and slash. Placing of slash on these skid trails while logging is ongoing may alleviate need for any further action. At the direction of the Sale Administrator, seed, fertilizer, and mulch may also be required.

5.4.3 - Erosion Control (12/08)

Skid trails or haul roads may require erosion control structures or berms per direction of the Unit Manager or his/her representative.

6 - Safety and Fire Prevention

6.2 - Signing

6.2.1 - Road Posting (10/20)

The Purchaser is responsible for posting and maintaining caution signs on high traffic forest roads and/or County roads determined by Sale Administrator prior to beginning operations. The road must be posted at appropriate distances from the Sale Area to warn of logging activity and truck traffic. Signs must be removed when harvest operations are suspended or completed. The Purchaser will provide these signs.



TIMBER SALE MAP

This information provided by authority of Part 525, 1994 PA 451, as amended.

Sale Number

32-001-25

Date

03/28/2025

Forest Management Unit

Gwinn Mgt Unit

County

Marquette

Mapped By: Jacob Siler

Cruised By: Jacob Siler

Scale

1:15,840

Page

1

Of

1

Township

45N

Range

26W/27W

Section(s) and

Subdivision(s) **Sec. 11 SESE; Sec. 12 S1/2SW,SESE; Sec. 13 N1/2NW; Sec. 18 NWNW; Sec. 7 NWSW,S1/2SW;**

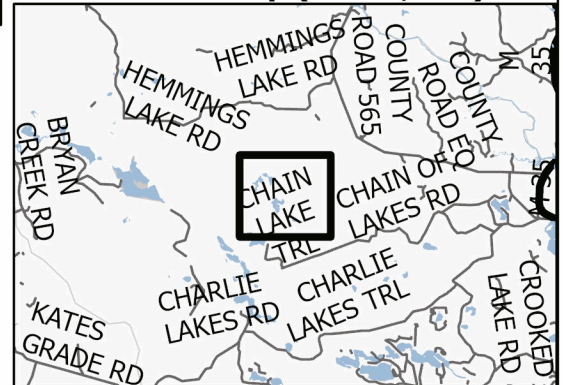
Cover Type

A = Aspen	J = Jack Pine	O = Oak	U = Upland Brush
B = Paper Birch	K = Rock	P = Lowland Poplar	UM = Upland Mix Forest
C = Cedar	L = Lowland Brush	Q = Mixed Swamp Conifer	V = Bog or Marsh
D = Treed Bog	LM = Lowland Mix Forest	R = Red Pine	W = White Pine
E = Swamp Hardwoods	M = Maple, Beech, Birch	S = Black Spruce	X = Non Stocked
F = Spruce/Fir	MC = Mixed Conifer	T = Tamarack	Y = Sand
G = Grass	MD = Mixed Deciduous		Z = Water
H = Hemlock	N = Marsh		

Density

0 = Non Stocked	5 = Pole Timber Medium
1 = Seedling Sapling Poor	6 = Pole Timber Well
2 = Seedling Sapling Medium	7 = Saw Timber Poor
3 = Seedling Sapling Well	8 = Saw Timber Medium
4 = Pole Timber Poor	9 = Saw Timber Well

Locator Map (1:200,000)



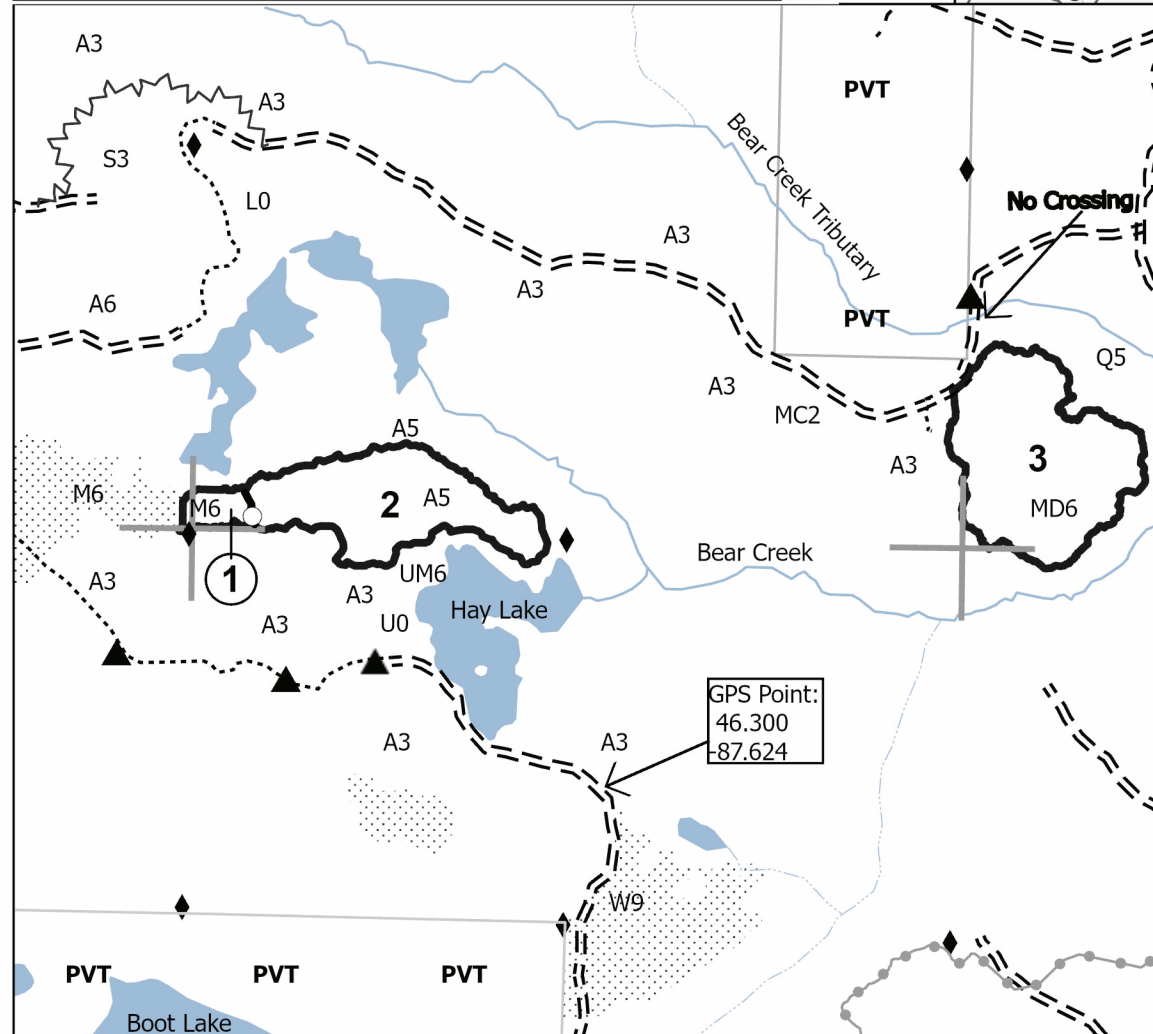
PU # Acres

1	2.7
2	22.9
3	31.4

Skid Plate
57.0 Acres



0 0.25 0.5 1 Miles



Legend

- Against State (Red)
- Payment Unit (Yellow)
- Primary Forest Road
- Forest Access Route
- Administrative Access Only
- Paved Road
- Government Gravel/Dirt
- Private Gravel/Dirt
- Possible Road Reroute
- Survey Grade Corner
- Berm
- Section Corner
- Nearby Timber Sale
- State Boundary
- Recreational Trail
- Lakes and Rivers
- Intermittent Stream
- Perennial River



TIMBER SALE INFORMATION

565 Crooked Chains (32-012-25)

T45N, R26W, SEC. 16; T45N, R26W, SEC. 21; T45N, R26W, SEC. 9.

Marquette County (Advertised Price \$167,685.90)

SALE NOTE: This sale has operation restriction specs due to bark slippage and oak wilt. The Bass Lake motorcycle trail runs through a portion of this sale.

A recreation site such as a trail, pathway, or campground is within the sale area or the vicinity. Certain restrictions/specifications may be applicable including time restrictions.

A timber sale contract for this lump sum, sealed bid timber sale will be awarded to the responsible bidder offering the highest sealed bid price. All units of volume listed below were estimated using the Inventory Manager computer program and the new Michigan taper model. Bids must be at or above the following advertised price for each product and species:

<u>PRODUCTS & SPECIES</u>	<u>ESTIMATED UNITS*</u>		<u>ADVERTISED PRICE</u>
Sawtimber			
Paper Birch	0.4	MBF	\$ 86.00 / MBF
Red Oak	31.8	MBF	\$ 150.00 / MBF
Pulpwood			
Balsam Fir	1	Cords	\$ 8.60 / Cord
Jack Pine	129	Cords	\$ 29.80 / Cord
Mixed Aspen	534	Cords	\$ 22.95 / Cord
Mixed Hardwood	175	Cords	\$ 9.85 / Cord
Mixed Spruce	103	Cords	\$ 8.65 / Cord
Red Oak	130	Cords	\$ 15.30 / Cord
Red Pine	2,866	Cords	\$ 49.15 / Cord
Tamarack	28	Cords	\$ 11.70 / Cord
White Pine	67	Cords	\$ 14.60 / Cord

* The total volume is statistically estimated within plus (+) or minus (-) 9.86 percent. There are an estimated 4,103 cords on this timber sale, plus or minus 405 cords at the 95% confidence level. The estimated units are final and not subject to adjustment. Prospective bidders are urged to examine this timber and to make their own estimates of quantity and quality.

BOND AND PAYMENT SCHEDULE:

1. A bond in the amount of \$8,384.00 to insure faithful performance of the conditions of the contract will be deposited by the successful bidder within 21 days of the sale award.
2. Cutting in any sale or unit without the required advance payment would be considered a trespass.
3. Total payment must be paid in advance or according to the following schedule :
 - (a) Ten percent (10%) of the sale value must be paid within 21 days of the sale award.
 - (b) The 10% down payment will be credited towards the first unit cut.
 - (c) Payment for each of the following units must be made before cutting begins in that unit:

<u>PAYMENT UNIT NUMBER</u>	<u>PERCENT OF TOTAL SALE VALUE</u>
01	15.6%
02	21.3%
03	9.8%
04	15.0%
05	11.6%
06	12.2%
07	3.3%
08	2.2%
09	0.6%
10	1.3%
11	5.0%
12	0.7%
13	1.4%

4. If no cutting takes place, the 10% down payment will not be refunded.
5. Operations on the contract issued will terminate on 06/30/2029.

SALE STATISTICS

Volumes were calculated in cubic feet using the Michigan taper model. Cubic foot volume includes all wood inside bark for the product indicated. For display purposes, cubic feet were converted to cords and MBF using a simple conversion factor, e.g. 79 cubic feet per cord and 185 cubic feet per MBF. The cubic foot volumes are precise; the cords and MBF volumes are not. Cubic foot volume cannot be directly converted to cords or boards with precision.

SALE VOLUMES

The total estimated sale volume may not equal the sum of the species/products due to the nature of statistical calculations associated with double sampling methodology.

VOLUME			STATISTICAL RANGE IN CORDS	
TOTAL CUBIC FEET	TOTAL CORDS	PERCENT ERROR	MINIMUM	MAXIMUM
324,103	4,103	9.86%	3,698	4,507

VDU VOLUMES

A VDU is a Volume Determination Unit. Volumes and their associated statistics are calculated at the VDU level and summarized to the sale level. There is often a one to one relationship between a VDU and a Payment Unit, but not always, depending on the cruise design. Refer to the VDU TO PAYMENT UNIT table.

	VOLUME			RANGE IN CORDS	
VDU	TOTAL CUBIC FEET	TOTAL CORDS	PERCENT ERROR	MINIMUM	MAXIMUM
37	9,736	123	52.71%	58	188
39	12,599	159	51.00%	78	241
49	13,759	174	59.29%	71	277
50	29,605	375	48.20%	194	555
51	69,848	884	16.33%	740	1,029
61	16,364	207	38.79%	127	287
65	163,793	2,073	14.10%	1,781	2,366
81	8,400	106	38.79%	65	148
TOTAL:	324,103	4,103		3,114	5,091

VDU TO PAYMENT UNIT

When a VDU is associated with more than one Payment Unit (PU), the VDU volumes are assigned to the PU based on acres of the VDU within the PU.

VDU	VDU ACRES	PU	PU ACRES
37	4.3	12	4.3
39	11.9	9	4.1
		10	7.8
49	10.9	7	10.9
50	18.1	11	18.1
51	44.6	3	17.6
		4	27.0
61	15.5	8	15.5
65	104.8	1	26.9
		2	36.8
		5	20.0
		6	21.1
81	4.5	13	4.5
TOTAL:	214.6		214.6

DESCRIPTION OF TIMBER BY PAYMENT UNIT (PU)

PU	MARKET GROUP	PRODUCT	QUANTITY	UNIT	ACRES	ADVERTISE PRICE
1	Mixed Hardwood <i>Red Maple</i> Mixed Spruce <i>White Spruce</i> Red Pine	Pulpwood	1 1 1 1 531	Cords Cords Cords Cords Cords	26.9	\$26,117.15
2	Mixed Hardwood <i>Red Maple</i> Mixed Spruce <i>White Spruce</i> Red Pine	Pulpwood	1 1 1 1 726	Cords Cords Cords Cords Cords	36.8	\$35,701.40
3	Jack Pine Mixed Aspen <i>Quaking Aspen</i> Red Pine	Pulpwood	17 19 19 315	Cords Cords Cords Cords	17.6	\$16,424.90
4	Jack Pine Mixed Aspen <i>Quaking Aspen</i> Red Pine	Pulpwood	27 29 29 483	Cords Cords Cords Cords	27.0	\$25,209.60
5	Mixed Hardwood <i>Red Maple</i> Red Pine	Pulpwood	1 1 395	Cords Cords Cords	20.0	\$19,424.10
6	Mixed Hardwood <i>Red Maple</i> Red Pine	Pulpwood	1 1 416	Cords Cords Cords	21.1	\$20,456.25
7	Red Oak Mixed Hardwood <i>Red Maple</i> Red Oak	Sawtimber Pulpwood	26.2 9 9 104	MBF Cords Cords Cords	10.9	\$5,609.85
8	Paper Birch Red Oak Balsam Fir Mixed Aspen <i>Quaking Aspen</i> Mixed Hardwood <i>Paper Birch</i> <i>Red Maple</i> Red Oak White Pine	Sawtimber Pulpwood	0.4 5.6 1 33 33 72 7 65 26 60	MBF MBF Cords Cords Cords Cords Cords Cords Cords Cords	15.5	\$3,623.35
9	Jack Pine Mixed Aspen <i>Quaking Aspen</i> Mixed Hardwood <i>Paper Birch</i> <i>Red Maple</i>	Pulpwood	11 25 25 18 4 14	Cords Cords Cords Cords Cords Cords	4.1	\$1,078.85
10	Jack Pine Mixed Aspen <i>Quaking Aspen</i> Mixed Hardwood <i>Paper Birch</i> <i>Red Maple</i>	Pulpwood	22 49 49 35 7 28	Cords Cords Cords Cords Cords Cords	7.8	\$2,124.90
11	Mixed Aspen <i>B. T. Aspen</i> <i>Quaking Aspen</i> Mixed Hardwood <i>Red Maple</i>	Pulpwood	357 79 278 17 17	Cords Cords Cords Cords Cords	18.1	\$8,377.90

DESCRIPTION OF TIMBER BY PAYMENT UNIT (PU), CON'T

PU	MARKET GROUP	PRODUCT	QUANTITY	UNIT	ACRES	ADVERTISE PRICE
11 con't	Mixed Spruce <i>White Spruce</i>	Pulpwood	2 2	Cords <i>Cords</i>		
12	Jack Pine Mixed Hardwood <i>Red Maple</i> Mixed Spruce <i>Black Spruce</i> Tamarack	Pulpwood	5 2 2 92 92 24	Cords Cords <i>Cords</i> Cords <i>Cords</i> Cords	4.3	\$1,245.30
13	Jack Pine Mixed Aspen <i>Quaking Aspen</i> Mixed Hardwood <i>Paper Birch</i> <i>Red Maple</i> Mixed Spruce <i>Black Spruce</i> <i>White Spruce</i> Tamarack White Pine	Pulpwood	47 22 22 18 8 10 7 3 4 4 7	Cords Cords <i>Cords</i> Cords <i>Cords</i> <i>Cords</i> Cords <i>Cords</i> <i>Cords</i> Cords Cords	4.5	\$2,292.35
TOTAL:			32.2	MBF		
TOTAL:			4,033	Cords		

Sale Specific Conditions & Requirements

Sale Name: 565 Crooked Chains

Sale Number: 32-012-25 Seq#: 1

1 - Sale Area

1.2 - Boundaries

1.2.1 - Painted Boundaries (9/19)

The sale boundary and Payment Unit boundaries are marked and identified by blue, red, and yellow paint, or are unpainted and designated by roads. Exterior sale boundary lines against private property are marked with blue paint. Exterior sale boundary lines against state are marked with red paint, except for the boundaries of Payment Units 3, 4, 11 against Chain Lake Trail, Payment Units 6 and 8 against Crooked Lake Road, and Payment Unit 10 against County Road 565. Interior Payment Unit boundaries are marked with yellow paint, except for the boundaries of Payment Units 1 and 2 against County Road 565 and Payment Units 4 and 11 against Chain Lake Trail. Retention patches are marked with red paint; no harvesting activities may occur within these areas. The painted boundary line trees are not Included Timber and are to be protected unless marked with orange paint. Yellow painted trees designating an interior Payment Unit boundary are only to be cut when all surrounding Payment Units have been paid.

2 - Timber Specifications

2.1 - Included Timber

2.1.1 - Clearcut Unit(s) with Unmerchantable Trees (6/14)

Within Payment Unit(s) 9 and 10, cut all trees that are two (2) inches or more at DBH, except do not cut oak, white pine, red pine, or cedar.

Within Payment Unit 11, cut all trees that are two (2) inches or more at DBH, except do not cut oak, white pine, or cherry.

Within Payment Unit 12, cut all trees that are two (2) inches or more at DBH, except do not cut oak, white pine, or cedar.

2.1.3 - Cut Tree Marked Unit(s) (12/08)

Within Payment Unit(s) 1-8, all trees are designated for cutting when marked with orange paint above and below stump height, regardless of merchantability.

In addition:

Within Payment Units 3 and 4, cut all jack pine, red maple, and aspen, which meet minimum piece specifications in 2.2 utilization.

Within Payment Unit 8, cut all aspen, maple, fir, and spruce which meet minimum piece specifications in 2.2 utilization.

2.1.7 - Leave Tree Marked Unit(s) (6/14)

Within Payment Unit(s) 13, cut all trees that are two (2) inches or more at DBH, except do not cut cedar, oak, red pine, or trees marked with green paint above and below stump height.

3 - Payments

3.3 - Pre-measured Sales

3.3.4 - Dividing Payment Units (7/14)

Payment Unit(s) valued at \$20,000, or more, may be divided at the request of the Purchaser and upon approval of the Unit Manager. Dividing Payment Units is a contract modification which requires a Timber Sale Contract Amendment. There will be only one division per Payment Unit.

3.4 - Damaged Timber

3.4.1 - Damaged Timber (12/24)

General Condition and Requirement 3.4 Damaged Timber, defines liquidated damages for undesigned live merchantable trees which are cut or injured. In addition, extreme care should be taken to avoid damage to tree seedlings and saplings. No

damage is acceptable to undesignated live merchantable trees. Within the Sale Area, if more than 5% of trees (> 4.5" DBH) within a specified area of the sale are damaged, liquidated damages will be assessed for all trees damaged. Rates will be in accordance with General Condition and Requirement 3.4 Damaged Timber.

4 - Transportation

4.1 - Construction

4.1.4 - Timber Removed for Construction (3/23)

Trees cut or damaged in the process of pre-approved road, landing, or skid trail construction will be decked in an area separate from other Designated Timber and not removed until measured by the Sale Administrator. Payment will be made at contract prices or average prices, if not on the contract.

4.1.6 - Road Construction (4/24)

Construction of new roads or improvements of existing roads shall be done in such a way as to minimize the environmental and visual impacts. Merchantable trees shall be cut and utilized unless otherwise directed. Non-merchantable trees shall be severed and laid flat on the ground. Slash shall be scattered, and not left in windrows and kept a minimum of 10 feet back from the road edge. Stumps shall be set upright, not left on edge, and be moved at least 10 feet away from the road edge. Disturbed soil shall be feathered into the woods and not left in berms or windrows.

4.1.7 - Road Closure (10/11)

All new roads built into the sale must be blocked to vehicle traffic upon completion of the sale. Overgrown roads that are reopened shall be considered new roads. In general, this will require constructing a four (4') foot high berm of stumps and logs covered with earth. Temporary berms may be required if no sale activity occurs for 30 or more consecutive days. Contact the Sale Administrator for specific details of design and placement.

4.2 - Maintenance

4.2.3 - Road maintenance (8/13)

The following road maintenance may be required: Within 60 days of completion of hauling, or if no hauling occurs for 60 days, the Unit Manager, or his/her representative, may require State Roads to be maintained and graded. This includes cleaning of drainage areas, grading, crowning, and filling with gravel, if necessary. Damages will be assessed if grading/repair does not occur.

4.3 - Public Right-of-Way

4.3.2 - County R-O-W (12/06)

The County must be contacted prior to crossing or harvesting in the County Road R-O-W. This applies to Payment Units 1, 2, and 10 that are adjacent to County Road 565, Crooked Lake Road, and Chain of Lake Road.

5 - Operations

5.1 - Notification

5.1.1 - Pre-sale Conference (10/16)

A pre-sale conference between the Purchaser and Sale Administrator is required prior to beginning any operations. The Unit Manager or his/her representative must be contacted at least 3 days in advance to schedule the conference.

5.2 - Conduct of Operations

5.2.2 - Hazard Trees/Snags

5.2.2.1 - Den Trees (10/16)

Obvious hollow and/or den trees shall be protected and left standing unless they are a safety hazard.

5.2.3 - Operating Restrictions

5.2.3.1 - Operating Restrictions (9/11)

Within Payment Unit(s) 12, unless changed by written agreement, cutting, skidding, and hauling are limited to the period of December 15 to April 15. This restriction is because of wet soils.

5.2.3.3 - Bark Slippage Restriction (3/09)

Within Payment Unit(s) 7 and 8, unless changed by written agreement, cutting and skidding are not permitted during the period of April 15 to July 15. This restriction is because of bark slippage.

5.2.3.4 - Oak Wilt Restriction, No Exceptions (1/18)

Within Payment Units 7-13, cutting, skidding, brushing, and road establishment within the Payment Unit are not permitted during the period of April 15 to July 15. No exceptions will be granted. In addition, brushing of access roads may not be permitted from April 15 to July 15 if Sale Administrator determines brushing will increase risk of oak wilt. This is necessary to reduce the spread of oak wilt.

5.2.32 - Decking/Landing Restoration (9/13)

All decking and landing areas must have the surface area restored to a condition equal to or better than before. This is to ensure the proper regeneration of the stand. Wood debris, chips and "cookies" from trimmings must be removed or scattered away from landing and loading areas and may not be windrowed on the edge.

5.2.38 - No Decking Against Live Trees (2/04)

Cut products may not be decked against unmarked or designated leave trees.

5.2.39 - ORV Trail/Route Protection (4/18)

The Bass Lake motorcycle trail is an ORV trail and is shown on the Timber Sale Map. Do not cut trees or damage posts with yellow ORV markers. All stumps within 5 feet of the trail must be cut flush with the ground. Maintain a 20-foot-wide slash, debris, and rut free zone daily using the ORV trail or route as the centerline. Do not run equipment down the ORV trail or route. Skidding across the trail or route may only occur in locations approved by the Sale Administrator.

5.4 - Soil Protection

5.4.1 - Rutting Restriction, General (7/16)

Operations are to cease immediately if equipment and weather conditions result in rutting of roads and/or skid trails which is 12 inches or greater in depth and 50 feet in length. The Unit Manager or his/her representative may restrict hauling and/or skidding if ruts exceed the specified depth. With the Unit Manager or his/her representative's approval, the Purchaser may return to the area when the risk of rutting has decreased.

5.4.2 - Skid Trails (2/04)

Skid trails up and down slopes should be avoided. If, however, this is unavoidable, these trails will be left in a non-erodible condition using water bars, logs, and slash. Placing of slash on these skid trails while logging is ongoing may alleviate need for any further action. At the direction of the Sale Administrator, seed, fertilizer, and mulch may also be required.

6 - Safety and Fire Prevention

6.2 - Signing

6.2.1 - Road Posting (10/20)

The Purchaser is responsible for posting and maintaining caution signs on County Road 565, Crooked Lake Road, and Chain Lake Trail prior to beginning operations. The road must be posted at appropriate distances from the Sale Area to warn of logging activity and truck traffic. Signs must be removed when harvest operations are suspended or completed. The Purchaser will provide these signs.

6.2.3 - Recreational Trail Posting (10/20)

The Purchaser is responsible for posting and maintaining caution signs on Bass Lake Motorcycle Trail prior to beginning operations. The trail must be posted at appropriate distances from the Sale Area to warn of logging activity and truck traffic at both ends of the trail. Signs must be removed when harvest operations are suspended or completed. The Purchaser will provide these signs.

**TIMBER SALE MAP**

This information provided by authority of Part 525, 1994 PA 451, as amended.

Sale Number

32-012-25

Date

03/28/2025

Forest Management Unit

Gwinn Mgt Unit

County

Marquette

Mapped By: Fischer

Cruised By: Fischer, Rosten, Yeo

Scale

1:7,920

Page

1

Of

2

Township
45NRange
26WSection(s) and
Subdivision(s) E1/2NW,S1/2NE,NESW,N1/2SE;
Sec. 16 NWNW,S1/2NW,SWNE,N1/2SW,SESW; Sec. 16 SE; Sec. 21 NENW,NWNE; Sec. 9**Cover Type**

A = Aspen	J = Jack Pine	O = Oak	U = Upland Brush
B = Paper Birch	K = Rock	P = Lowland Poplar	UM = Upland Mix Forest
C = Cedar	L = Lowland Brush	Q = Mixed Swamp Conifer	V = Bog or Marsh
D = Treed Bog	LM = Lowland Mix Forest	R = Red Pine	W = White Pine
E = Swamp Hardwoods	M = Maple, Beech, Birch	S = Black Spruce	X = Non Stocked
F = Spruce/Fir	MC = Mixed Conifer	T = Tamarack	Y = Sand
G = Grass	MD = Mixed Deciduous	Z = Water	
H = Hemlock	N = Marsh		

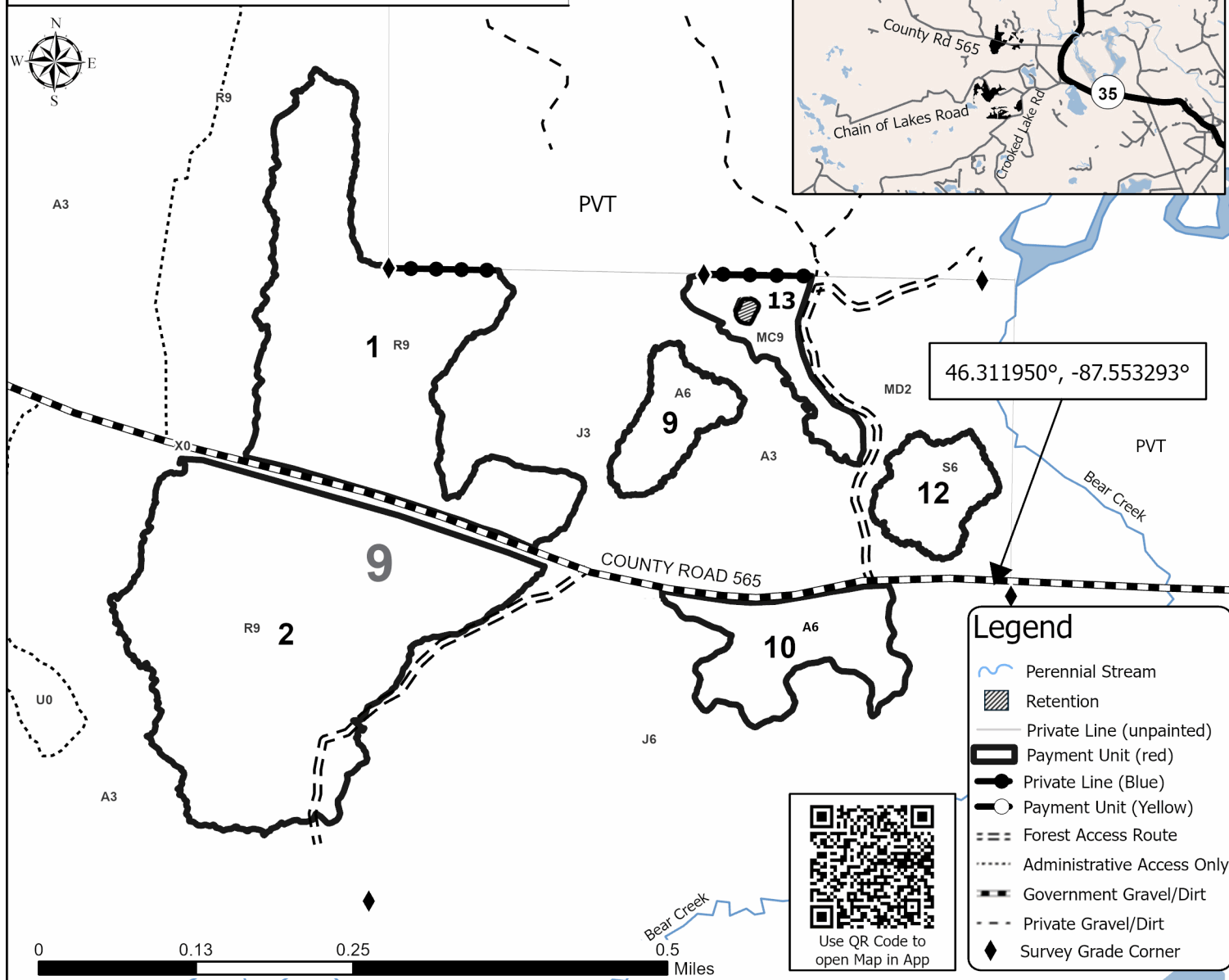
Density

0 = Non Stocked	5 = Pole Timber Medium
1 = Seedling Sapling Poor	6 = Pole Timber Well
2 = Seedling Sapling Medium	7 = Saw Timber Poor
3 = Seedling Sapling Well	8 = Saw Timber Medium
4 = Pole Timber Poor	9 = Saw Timber Well

Payment Unit	Acres	Payment Unit	Acres	Payment Unit	Acres
1	26.9	6	21.1	11	18.1
2	36.8	7	10.9	12	4.3
3	17.6	8	15.5	13	4.5
4	27	9	4.1		
5	20	10	7.8		

565 Crooked Chains**214.6 Acres**

Compartment 32033

Locator Map 1:200,000**Legend**

- Perennial Stream
- Retention
- Private Line (unpainted)
- Payment Unit (red)
- Private Line (Blue)
- Payment Unit (Yellow)
- Forest Access Route
- Administrative Access Only
- Government Gravel/Dirt
- Private Gravel/Dirt
- Survey Grade Corner



TIMBER SALE MAP

This information provided by authority of Part 525, 1994 PA 451, as amended.

Sale Number

32-012-25

Date

03/31/2025

Forest Management Unit

County

Mapped By: Fischer

Scale

Page

Of

Gwinn Mgt Unit

Marquette

Cruised By: Fischer, Rosten, Yeo

1:10,000

2

2

Township
45N

Range
26W

Section(s) and Subdivision(s) E1/2NW,S1/2NE,NESW,N1/2SE;
Sec. 16 NWNW,S1/2NW,SWNE,N1/2SW,SESW; Sec. 16 SE; Sec. 21 NENW,NWNE; Sec. 9

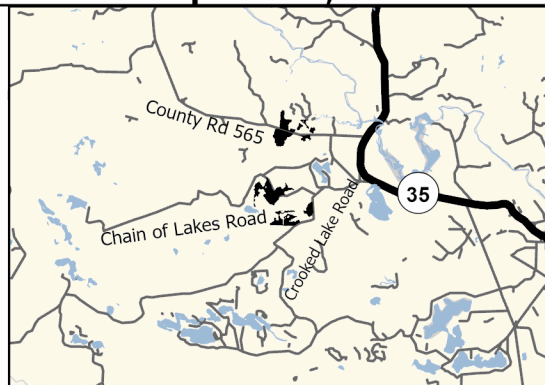
Cover Type

A = Aspen	J = Jack Pine	O = Oak	U = Upland Brush
B = Paper Birch	K = Rock	P = Lowland Poplar	UM = Upland Mix Forest
C = Cedar	L = Lowland Brush	Q = Mixed Swamp Conifer	V = Bog or Marsh
D = Treed Bog	LM = Lowland Mix Forest	R = Red Pine	W = White Pine
E = Swamp Hardwoods	M = Maple, Beech, Birch	S = Black Spruce	X = Non Stocked
F = Spruce/Fir	MC = Mixed Conifer	T = Tamarack	Y = Sand
G = Grass	MD = Mixed Deciduous	Z = Water	
H = Hemlock	N = Marsh		

Density

0 = Non Stocked	5 = Pole Timber Medium
1 = Seedling Sapling Poor	6 = Pole Timber Well
2 = Seedling Sapling Medium	7 = Saw Timber Poor
3 = Seedling Sapling Well	8 = Saw Timber Medium
4 = Pole Timber Poor	9 = Saw Timber Well

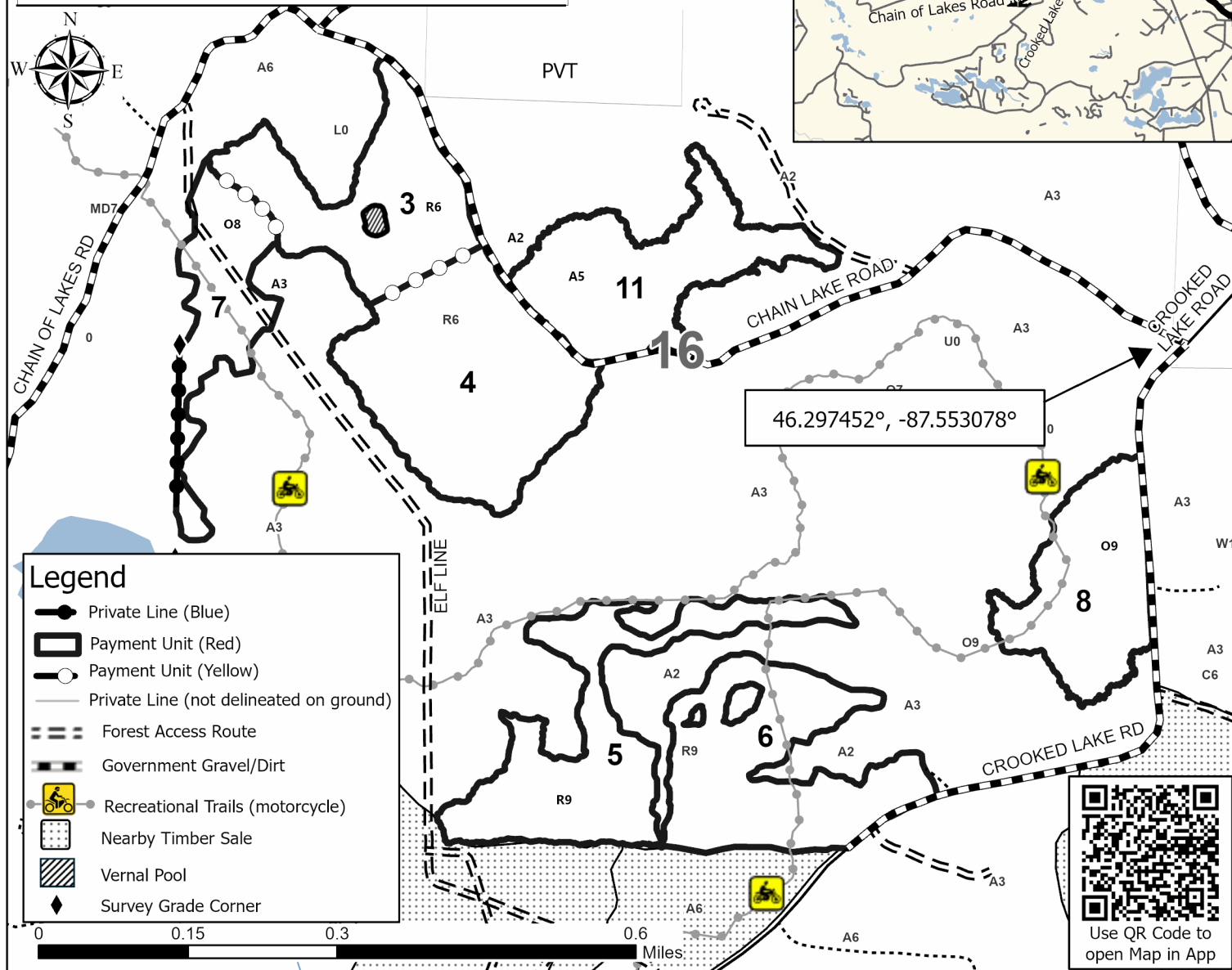
Locator Map 1:200,000



Payment Unit	Acres	Payment Unit	Acres	Payment Unit	Acres
1	26.9	6	21.1	11	18.1
2	36.8	7	10.9	12	4.3
3	17.6	8	15.5	13	4.5
4	27	9	4.1		
5	20	10	7.8		

565 Crooked Chains

Compartment 32033
214.6 Acres



Use QR Code to
open Map in App

565 Crooked Chains (32-012-25)

T45N, R26W, SEC. 16; T45N, R26W, SEC. 21; T45N, R26W, SEC. 9; Marquette

In response to the notice of sale to be held 2:00 p.m. (local time) on August 18, 2025, I am hereby submitting my sealed bid (firm offer) for the following forest products to be cut. Bids for individual species must be at or above the advertised price. All non-responsive bid forms may be rejected.

<u>PRODUCTS & SPECIES</u>	<u>ESTIMATED VOLUME*</u>	<u>ADVERTISED PRICE</u>	<u>BID PRICE/UNIT</u>
Sawtimber			
Paper Birch	0.4 MBF	\$ 86.00/MBF	\$ _____
Red Oak	31.8 MBF	\$ 150.00/MBF	\$ _____
Pulpwood			
Balsam Fir	1 Cords	\$ 8.60/Cord	\$ _____
Jack Pine	129 Cords	\$ 29.80/Cord	\$ _____
Mixed Aspen	534 Cords	\$ 22.95/Cord	\$ _____
Mixed Hardwood	175 Cords	\$ 9.85/Cord	\$ _____
Mixed Spruce	103 Cords	\$ 8.65/Cord	\$ _____
Red Oak	130 Cords	\$ 15.30/Cord	\$ _____
Red Pine	2,866 Cords	\$ 49.15/Cord	\$ _____
Tamarack	28 Cords	\$ 11.70/Cord	\$ _____
White Pine	67 Cords	\$ 14.60/Cord	\$ _____

*The volumes are statistically estimated within plus (+) or minus (-) 9.86 percent at 95% confidence level. These estimated volumes are final and not subject to adjustment. Prospective bidders are urged to examine this timber and to make their own estimates of quantity and quality.

I understand that any or all bids may be rejected. All bids must be signed and all bid items must be bid or the bid form may be rejected. I also understand that consideration and awarding a contract will be based upon my past performance and ability to complete the contract based upon equipment and staffing subject to my control.

FEDERAL ID: _____ or SOCIAL SECURITY NUMBER: _____
 Company or individual bidding: _____
 Company representative's name: _____
 Address: _____
 City: _____ State: _____ Zip: _____

IF AVAILABLE, PLEASE PLACE THE PERSONALIZED LABEL FROM YOUR PROSPECTUS IN THE ABOVE BOX.

Individual or company representative's signature: _____ Date: _____

Phone number : _____ Email (optional): _____

THE WINNING BIDDER MUST COMPLETE THE VERIFICATION OF WORKER'S DISABILITY COMPENSATION ACT COMPLIANCE (ON REVERSE SIDE IF DOUBLE SIDED) WITHIN 21 DAYS OF SALE AWARD DATE



TIMBER SALE VERIFICATION OF WORKER'S DISABILITY COMPENSATION ACT COMPLIANCE

As required by Act 317, P.A. 1969 (Worker's Compensation) and
Part 5 of Act 451 of 1994, as amended.

FOR DEPARTMENT USE ONLY

Sale Number (XX - XXX - XX - XX)

Forest Management Unit:

VERIFICATION OF WORKER'S DISABILITY COMPENSATION ACT COMPLIANCE

- This verification must be completed and submitted within 21 days of contract award and prior to the issuance of the timber sale contract.
- In addition, if boxes 2B or 2C are checked, then Notice of Exclusion or Certificate of Insurance must be submitted within twenty-one (21) days of the contract award and prior to the issuance of the timber sale contract.
- All information must be typed or printed except for written signatures.

Please Check Appropriate Categories:

1. My business is organized as (you **must** check one of the boxes below):
 - A. ☐ Sole Proprietorship (individual)
 - B. ☐ Partnership
 - C. ☐ Corporation
2. You **must** check one of the boxes below:
 - A. ☐ I certify my business is a sole proprietorship and it has no employees but the sole proprietor. I am not subject to the Worker's Compensation Laws.
 - B. ☐ I certify my business has satisfied its obligation to the Worker's Compensation Act through the use of an approved Notice of Exclusion (BWC-337, Rev. 5/96). I will provide a copy of the Notice of Exclusion within 21 days of the contract award. (For questions or a copy of the BWC-337, please call the Worker's Compensation Bureau at 517-322-1195).
 - C. ☐ I certify my business has a Worker's Compensation Policy. I will provide an original Certificate of Insurance within twenty-one (21) days of the contract award.
3. If you have checked item 2(A) or 2(B), you **must** indicate the number of **both** full-time and part-time employees, other than yourself, including family members and active partners (if none, you must enter "0").

_____ Full-time Employees

_____ Part-time Employees

Name of Business		Federal ID (or) Social Security No.
Address		Telephone ()
City	State	ZIP

I hereby certify that the above information is true and correct. I agree to notify the Michigan DNR of any changes that occur in factors affecting my coverage during any of my present and future operations.

Signature of Owner or Authorized Representative

Title

Date

Please complete the "SEALED BID" information on the next page

Skid Plate (32-001-25)

T45N, R26W, SEC. 18; T45N, R26W, SEC. 7; T45N, R27W, SEC. 11; T45N, R27W,

In response to the notice of sale to be held 2:00 p.m. (local time) on August 18, 2025, I am hereby submitting my sealed bid (firm offer) for the following forest products to be cut. Bids for individual species must be at or above the advertised price. All non-responsive bid forms may be rejected.

<u>PRODUCTS & SPECIES</u>	<u>ESTIMATED VOLUME*</u>	<u>ADVERTISED PRICE</u>	<u>BID PRICE/UNIT</u>
Sawtimber			
Paper Birch	17.6 MBF	\$ 86.00/MBF	\$ _____
Red Maple	7.1 MBF	\$ 87.00/MBF	\$ _____
Sugar Maple	4.2 MBF	\$ 187.00/MBF	\$ _____
Pulpwood			
Balsam Fir	29 Cords	\$ 8.60/Cord	\$ _____
Jack Pine	4 Cords	\$ 29.80/Cord	\$ _____
Mixed Aspen	305 Cords	\$ 22.95/Cord	\$ _____
Mixed Hardwood	657 Cords	\$ 9.85/Cord	\$ _____
Mixed Spruce	27 Cords	\$ 8.65/Cord	\$ _____
Tamarack	14 Cords	\$ 11.70/Cord	\$ _____

*The volumes are statistically estimated within plus (+) or minus (-) 18.42 percent at 95% confidence level. These estimated volumes are final and not subject to adjustment. Prospective bidders are urged to examine this timber and to make their own estimates of quantity and quality.

I understand that any or all bids may be rejected. All bids must be signed and all bid items must be bid or the bid form may be rejected. I also understand that consideration and awarding a contract will be based upon my past performance and ability to complete the contract based upon equipment and staffing subject to my control.

FEDERAL ID: ____ - ____ - ____ or SOCIAL SECURITY NUMBER: ____ - ____ - ____

Company or individual bidding: _____

Company representative's name: _____

Address: _____

City: _____ State: _____ Zip: _____

IF AVAILABLE, PLEASE PLACE THE PERSONALIZED LABEL FROM YOUR PROSPECTUS IN THE ABOVE BOX.

Individual or company representative's signature: _____ Date: _____

Phone number : _____ Email (optional): _____

THE WINNING BIDDER MUST COMPLETE THE VERIFICATION OF WORKER'S DISABILITY COMPENSATION ACT COMPLIANCE (ON REVERSE SIDE IF DOUBLE SIDED) WITHIN 21 DAYS OF SALE AWARD DATE



TIMBER SALE VERIFICATION OF WORKER'S DISABILITY COMPENSATION ACT COMPLIANCE

As required by Act 317, P.A. 1969 (Worker's Compensation) and
Part 5 of Act 451 of 1994, as amended.

FOR DEPARTMENT USE ONLY

Sale Number (XX - XXX - XX - XX)

Forest Management Unit:

VERIFICATION OF WORKER'S DISABILITY COMPENSATION ACT COMPLIANCE

- This verification must be completed and submitted within 21 days of contract award and prior to the issuance of the timber sale contract.
- In addition, if boxes 2B or 2C are checked, then Notice of Exclusion or Certificate of Insurance must be submitted within twenty-one (21) days of the contract award and prior to the issuance of the timber sale contract.
- All information must be typed or printed except for written signatures.

Please Check Appropriate Categories:

1. My business is organized as (you **must** check one of the boxes below):
 - A. ☐ Sole Proprietorship (individual)
 - B. ☐ Partnership
 - C. ☐ Corporation
2. You **must** check one of the boxes below:
 - A. ☐ I certify my business is a sole proprietorship and it has no employees but the sole proprietor. I am not subject to the Worker's Compensation Laws.
 - B. ☐ I certify my business has satisfied its obligation to the Worker's Compensation Act through the use of an approved Notice of Exclusion (BWC-337, Rev. 5/96). I will provide a copy of the Notice of Exclusion within 21 days of the contract award. (For questions or a copy of the BWC-337, please call the Worker's Compensation Bureau at 517-322-1195).
 - C. ☐ I certify my business has a Worker's Compensation Policy. I will provide an original Certificate of Insurance within twenty-one (21) days of the contract award.
3. If you have checked item 2(A) or 2(B), you **must** indicate the number of **both** full-time and part-time employees, other than yourself, including family members and active partners (if none, you must enter "0").

_____ Full-time Employees

_____ Part-time Employees

Name of Business		Federal ID (or) Social Security No.
Address		Telephone ()
City	State	ZIP

I hereby certify that the above information is true and correct. I agree to notify the Michigan DNR of any changes that occur in factors affecting my coverage during any of my present and future operations.

Signature of Owner or Authorized Representative

Title

Date

Please complete the "SEALED BID" information on the next page