



**DEPARTMENT OF NATURAL RESOURCES
STATE OF MICHIGAN
TIMBER SALE PROSPECTUS #7589**

SCHEDULED SALE DATE AND TIME: 3:00 p.m. (local time) on May 13, 2025.

LOCATION: NAUBINWAY DNR FIELD OFFICE, PO BOX 287, W11569 US2, NAUBINWAY, MI 49762.

PROSPECTUS NOTE: The bidder is advised to inspect the sale area and review the location, estimated volumes, operating costs and contract terms of proposed sales. Please be aware that some landowners may request 60 days or more notice for access across their land.

Notice is hereby given that bids will be received by the Unit Manager, SAULT STE MARIE MANAGEMENT UNIT, for certain timber on the following described lands:

Weather Station Pine (45-116-24) / T43N, R08W, SEC. 1 , W1/2NW,NWSW.

T43N, R08W, SEC. 2 , S1/2NW,NENE,S1/2NE,NESW,NWSE.

T44N, R08W, SEC. 34, SESW,SWSE.

Mackinac County, Advertised Price \$437,547.00, 137.7 Acres, Red Pine, Hardwood.

Weaving Weasel Mix (45-119-24) / T44N, R08W, SEC. 14, S1/2SW,SWSE.

T44N, R08W, SEC. 23, NW,NWNE,NESW,SE.

Mackinac County, Advertised Price \$42,147.40, 88.5 Acres, Hardwood, Spruce/Fir/ Tamarack.

SALE NOTE: A recreation site such as a trail, pathway, or campground is within the sale area or the vicinity. Certain restrictions/specifications may be applicable including time restrictions.

Strouble's Hurried Hardwood (45-122-24) / T43N, R07W, SEC. 5 , S1/2SW.

T43N, R07W, SEC. 6 , SESE.

T43N, R07W, SEC. 7 , NENE.

T43N, R07W, SEC. 8 , NW,NWNE,S1/2NE,E1/2SW,W1/2SE.

Mackinac County, Advertised Price \$102,591.55, 195.8 Acres, Hardwood, Sugar Maple.

Move Along Mix (45-112-23) / T43N, R07W, SEC. 30, SWNW,W1/2SW.

T43N, R08W, SEC. 25, SENE,SE.

T43N, R08W, SEC. 36, NE.

Mackinac County, Advertised Price \$16,659.00, 95.5 Acres, Spruce/Fir/ Tamarack, Hardwood.

SALE NOTE: Payment Units 3, 4, and 5 are optional to harvest due to access being difficult. Removing these Payment Units is a contract modification which requires a Timber Sale Contract Amendment. This sale has been reduced due to "no bid" on previous advertisement.

A recreation site such as a trail, pathway, or campground is within the sale area or the vicinity. Certain restrictions/specifications may be applicable including time restrictions.

Double Barrel Mix (45-114-23) / T43N, R08W, SEC. 23, E1/2NE.

T43N, R08W, SEC. 26, SWNW,NWSW.

T43N, R08W, SEC. 27, NWNW,S1/2NW,NWNE,SENE.

Mackinac County, Advertised Price \$12,511.15, 68.0 Acres, Spruce/Fir/Tamarack, Paper Birch.

SALE NOTE: Payment Unit 3 is optional to harvest due to potential access issues. Removing this Payment Unit is a contract modification which requires a Timber Sale Contract Amendment. This sale has been reduced due to "no bid" on previous advertisement

A recreation site such as a trail, pathway, or campground is within the sale area or the vicinity. Certain restrictions/specifications may be applicable including time restrictions.

Birch Please (45-116-22) / T44N, R08W, SEC. 18, N1/2SE.

T44N, R08W, SEC. 6 , SESW,SWSE.

T44N, R08W, SEC. 7 , NENW,W1/2NE.

Mackinac County, Advertised Price \$4,377.05, 30.6 Acres, Hardwood, Spruce/Fir/Tamarack.

SALE NOTE: Payment Unit 2 is optional to harvest due to its remoteness from Payment Unit 1. Removing this Payment Unit is a contract modification which requires a Timber Sale Contract Amendment. This sale has been reduced due to "no bid" on previous advertisement.

A recreation site such as a trail, pathway, or campground is within the sale area or the vicinity. Certain restrictions/specifications may be applicable including time restrictions.

BID INSTRUCTIONS (VER. 10/10/2022):

1. Scheduled Bid Location, Date, and Time (2/11)

Bids must be received by the Unit Manager, NAUBINWAY DNR FIELD OFFICE, PO Box 287 W11569 US2, Naubinway, MI 49762, no later than 3:00 p.m. (local time) on May 13, 2025. For further information concerning this sale, contact Josh Brinks at 906-203-0210 extension .

2. Bidder's Qualifications (10/22)

If all or part of a timber sale was prepared by a private contractor, the contractor and that contractor's company are not permitted to bid on the timber sale. A person must be 18 years of age or older to purchase timber. Permanent employees of the Department of Natural Resources or members of their immediate household may not bid. Former employees, in the permanent or seasonal class, may not bid until 3 months after the last day of active duty. Bids will not be accepted from individuals or companies appearing on the DNR/FRD No-Bid List. This list contains the names of purchasers who previously failed to execute a contract within 21-days or who have a history of poor performance.

3. Preparation of Sealed Bids (5/16)

Bid Forms may be completed online thru Michigan DNR Timber Sale Online Bidding (OLB) at www.michigan.gov/timberbidding or by completing the hardcopy Bid Form found in the Timber Sale Prospectus . Hardcopy Bid Forms shall be manually signed in ink. Registration in OLB is considered your 'signature' for all bids submitted thru that system. Bid prices must be entered for each species and product in the Bid Price column for all material subject to bidding and all fill-in blanks must be completed. If erasures or other changes appear on the hardcopy Bid Form, each erasure or change must be initialed by the person signing the bid.

4. Submission of Sealed Bids (5/16)

Bid forms may be obtained from the Unit Manager or thru OLB. Bids may be submitted hardcopy or thru OLB. All hardcopy bids must be submitted on the bid form and in an envelope clearly identified as described in this section. NOTE: Only one bid form per bid envelope. Sealed bids must be submitted to the Unit office designated in the prospectus and must be submitted at or prior to the time established in the prospectus. The envelope should show on the outside (a) the sale name or number and (b) the date and time of bid opening, as shown in the prospectus. Bids received after the time specified in the sale prospectus are late bids and will be rejected.

It is possible for a bidder to submit multiple bids on a single sale. For example, a bid may be submitted hardcopy and a bid may be submitted thru OLB. Or, two bidders from the same company could both submit bids on the same sale. If this were to happen, the State would accept all bids received and award the contract accordingly. All bidding and contractual requirements would apply to all bids received.

5. Public Opening of Sealed Bids (7/16)

If conditions permit, the sealed bids will be publicly opened and posted at the time and place set in the prospectus.

If a bidder, present at a bid opening, has submitted bids on more than one sale, that bidder may withdraw their unopened bid envelopes or announce the withdrawal of their online bid after being declared the successful bidder on one sale.

6. Award of Contract (1/11)

Award of the contract will be made to the Bidder whose bid, conforming to the prospectus, is most advantageous to the State of Michigan on the basis of total value at rates bid for the estimated quantities. The State reserves the right to reject any bid or waive any minor irregularity in bids received. A written award mailed (or otherwise furnished) to the successful Bidder shall be deemed to result in a binding contract without further action by either party.

7. Down Payment (1/11)

The Bidder to whom award is made must make a down payment within 21 days of the sale award. The amount of the down payment will be calculated as shown in the Bond and Payment Schedule of this prospectus. Only cash may be used to meet this requirement.

8. Performance Security (1/11)

As guarantee of faithful performance, a cash bond, certificate of deposit, surety bond or irrevocable letter of credit (LOC) is required within 21 days of the sale award. The amount of the performance security is shown in the Bond and

Payment Schedule of this prospectus. If an LOC or surety is used, the coverage must extend for at least 6 months beyond the contract expiration.

9. Worker's Compensation (10/22)

Purchaser shall obtain worker's compensation insurance to cover claims under Michigan's Worker's Disability Compensation Act of 1969 or similar employee benefit act of any other state applicable to an employee. Verification of Worker's Disability Compensation Act Compliance must be completed and submitted within 21 days of contract award and prior to the issuance of the timber sale contract. In addition, if applicable, Notice of Exclusion or Certificate of Insurance must also be submitted.

10. Timber Sale Contract (10/22)

Additional conditions and requirements common to all timber sales are listed on the timber sale contract (R4031) and are available on line at www.michigan.gov/timber. Contact the Unit Manager for additional information or a sample contract. Within 21 days of the date of the award letter, the bidder must sign the contract and provide the required down payment, performance security, and verification of worker's disability compensation. The down payment and performance security shall be in accordance with the provisions of the timber sale contract, in the sums stated in this prospectus. If these actions are not taken, then the Bidder, the Bidder's corporation, and the corporation's principals may not be permitted to bid on State timber sales for a period of 3 months after the first offense, 6 months after the second offense, and 1 year after the third offense. An offense will only be counted against the Bidder for 5 years. In addition, the Bidder certifies that if awarded this contract, the Bidder will complete the timber sale contract in accordance with its terms and any modifications thereof including requirements to purchase, cut, and remove the included timber by the expiration date.

Payment Unit values in the State Forest Timber Sale Contract are calculated based on the advertised value of the Payment Unit as a percentage of the total advertised value of the contract. The advertised value of each Payment Unit is given in the Description of Timber by Payment Unit table on the Timber Sale Information page. For example, if the value of Payment Unit 1 is advertised as \$1,500 and the total Timber Sale value is advertised as \$10,000, the contract price for Payment Unit 1 will be 15% of the total bid price ($\$1,500/\$10,000 * 100$).

11. Disclaimer of Estimates and Bidder's Warranty of Inspection (10/22)

Before submitting this bid, the Bidder is advised and cautioned to inspect the sale area, review the requirements of the sale contract, and take other steps as may be reasonably necessary to ascertain the location, estimated volumes, construction estimates, and operating costs of the proposed sale. Failure to do so will not relieve the Bidder from responsibility for completing the contract.

The Bidder warrants that this bid is submitted solely on the basis of the Bidder's examination and inspection of the quality and quantity of the timber offered for sale and the Bidder's opinion of the value thereof and the costs of recovery. No reliance should be placed on the State of Michigan's estimates of timber quality, quantity or costs of recovery. Bidder further acknowledges that the State of Michigan: (i) expressly disclaims any warranty of fitness of timber for any purpose; (ii) offers this timber as is without any warranty of quality (merchantability) or quantity and (iii) expressly disclaims any warranty as to the quantity or quality of timber sold.

12. Certification and Chain-of-Custody (10/22)

Unless otherwise indicated in the contract under section 7 – Other Conditions of the Sale Specific Conditions & Requirements, the area encompassed by this timber sale is certified to the standards of the Forest Stewardship Council (FSC) - Certificate #SCS-FM/COC-00090N and the Sustainable Forestry Initiative (SFI) - Certificate #NSF-SFIS-5Y031-SF5. Forest products from this sale may be delivered to the mill as "FSC 100% and / or SFI certified" as long as the contractor hauling the forest products is chain-of-custody (COC) certified or covered under a COC certificate from the destination mill. The purchaser is responsible for maintaining COC after leaving the sale area.

13. Good Neighbor Authority (GNA) Requirements (10/22)

If the name of this timber sales contains the acronym GNA, it is authorized by the Good Neighbor Authority (GNA) and covered by various agreements between the U.S. Forest Service and the State. The timber sale occurs on federal land and the following conditions apply:

GNA contracts on US Forest Service land will not be awarded to purchasers on the Federal list of excluded parties. The System for Award Management (SAM) will be checked for active excluded parties prior to award of contract. In

addition, the Bidder to whom award is made must complete an Assurance Regarding Felony Conviction or Tax Delinquent Status for Corporate Applicants (AD-3031).

14. Good Neighbor Authority (GNA) Requirements, con't (10/22)

Bidder certifies, by signing this bid form, that to the best of Bidder's knowledge that the following representations are accurate and complete.

- a. That the Bidder and its principals are not presently debarred, suspended, proposed for debarment, declared ineligible, or voluntary excluded from timber sales (covered transactions) by any Federal department or agency.
- b. That the Bidder and its principals have not within a 3-year period preceding this bid been convicted of or had a civil judgment rendered against them for commission of fraud or a criminal offense in connection with obtaining , attempting to obtain, or performing a public (Federal, State, or local) transaction or contract under a public transaction; violation of Federal or State antitrust statutes or commission of embezzlement, theft, forgery, bribery, falsification or destruction of records, making false statements, or receiving stolen property.
- c. That the Bidder and its principals are not presently indicted for or otherwise criminally or civilly charged by a governmental entity (Federal, State, or local) with commission of any of the offenses enumerated in paragraph b of this certification.
- d. That the Bidder and its principals have not within a 3-year period preceding this bid had one or more public transactions (Federal, State, or local) terminated for breach or default of a timber or forest product contract.

Bidders that cannot certify this requirement, in whole or in part, shall submit an explanation with their bid.

Scott Bowen
Director

TIMBER SALE INFORMATION

Weather Station Pine (45-116-24)
T43N, R08W, SEC. 1; T43N, R08W, SEC. 2; T44N, R08W, SEC. 34.
Mackinac County (Advertised Price \$437,547.00)

A timber sale contract for this lump sum, sealed bid timber sale will be awarded to the responsible bidder offering the highest sealed bid price. All units of volume listed below were estimated using the Inventory Manager computer program and the new Michigan taper model. Bids must be at or above the following advertised price for each product and species:

<u>PRODUCTS & SPECIES</u>	<u>ESTIMATED UNITS*</u>	<u>ADVERTISED PRICE</u>
Pulpwood		
B. T. Aspen	24 Cords	\$ 24.00 / Cord
Balsam Fir	50 Cords	\$ 9.55 / Cord
Jack Pine	28 Cords	\$ 30.60 / Cord
Misc. Species 2	31.5 Acres	\$ 15.00 / Acre
Mixed Hardwood	243 Cords	\$ 15.40 / Cord
Red Pine	4,956 Cords	\$ 86.95 / Cord
White Spruce	38 Cords	\$ 13.10 / Cord

* The total volume is statistically estimated within plus (+) or minus (-) 9.72 percent. There are an estimated 5,367 cords on this timber sale, plus or minus 522 cords at the 95% confidence level. The estimated units are final and not subject to adjustment. Prospective bidders are urged to examine this timber and to make their own estimates of quantity and quality.

BOND AND PAYMENT SCHEDULE:

- A bond in the amount of \$21,877.00 to insure faithful performance of the conditions of the contract will be deposited by the successful bidder within 21 days of the sale award.
- Cutting in any sale or unit without the required advance payment would be considered a trespass.
- Total payment must be paid in advance or according to the following schedule :
 - Ten percent (10%) of the sale value must be paid within 21 days of the sale award.
 - The 10% down payment will be credited towards the first unit cut.
 - Payment for each of the following units must be made before cutting begins in that unit:

PAYMENT UNIT NUMBER	PERCENT OF TOTAL SALE VALUE
01	2.5%
02	0.1%
03	26.6%
04	31.7%
05	2.1%
06	19.1%
07	17.9%
- If no cutting takes place, the 10% down payment will not be refunded.
- Operations on the contract issued will terminate on 12/31/2027.

SALE STATISTICS

Volumes were calculated in cubic feet using the Michigan taper model. Cubic foot volume includes all wood inside bark for the product indicated. For display purposes, cubic feet were converted to cords and MBF using a simple conversion factor, e.g. 79 cubic feet per cord and 185 cubic feet per MBF. The cubic foot volumes are precise; the cords and MBF volumes are not. Cubic foot volume cannot be directly converted to cords or boards with precision.

SALE VOLUMES

The total estimated sale volume may not equal the sum of the species/products due to the nature of statistical calculations associated with double sampling methodology.

VOLUME		STATISTICAL RANGE IN CORDS		
TOTAL CUBIC FEET	TOTAL CORDS	PERCENT ERROR	MINIMUM	MAXIMUM
424,017	5,367	9.72%	4,845	5,889
31.60 acres are being sold by the acre and do not have cubic foot or cord volumes.				

VDU VOLUMES

A VDU is a Volume Determination Unit. Volumes and their associated statistics are calculated at the VDU level and summarized to the sale level. There is often a one to one relationship between a VDU and a Payment Unit, but not always, depending on the cruise design. Refer to the VDU TO PAYMENT UNIT table.

	VOLUME			RANGE IN CORDS	
VDU	TOTAL CUBIC FEET	TOTAL CORDS	PERCENT ERROR	MINIMUM	MAXIMUM
26	155,417	1,967	13.00%	1,712	2,223
35	11,866	150	38.03%	93	207
53 *			N/A		
67	9,226	117	40.62%	69	164
80	245,315	3,105	14.48%	2,656	3,555
TOTAL:	421,823	5,340		4,530	6,149

* This VDU is being sold by the acre. There are no cruise statistics available.

VDU TO PAYMENT UNIT

When a VDU is associated with more than one Payment Unit (PU), the VDU volumes are assigned to the PU based on acres of the VDU within the PU.

VDU	VDU ACRES	PU	PU ACRES
26	37.8	6	19.5
26	37.8	7	18.3
35	7.4	1	7.4
53	31.6	2	31.6
67	10.9	5	10.9
80	50.0	3	22.8
80	50.0	4	27.2
TOTAL:	225.5		137.7

DESCRIPTION OF TIMBER BY PAYMENT UNIT (PU)

PU	MARKET GROUP	PRODUCT	QUANTITY	UNIT	ACRES	ADVERTISE PRICE
1	B. T. Aspen Balsam Fir Mixed Hardwood <i>Sugar Maple</i> Red Pine	Pulpwood	13 3 13 13 121	Cords Cords Cords Cords Cords	7.4	\$11,061.80
2	Misc. Species 2 <i>Misc. Species 1</i>	Pulpwood	31.5 31.5	Acres Acres	31.6	\$472.50
3	Balsam Fir Jack Pine Mixed Hardwood <i>Beech</i> <i>Black Cherry</i> <i>Ironwood</i> <i>Paper Birch</i> <i>Red Maple</i> <i>Sugar Maple</i> Red Pine White Spruce	Pulpwood	7 13 60 3 9 2 10 4 32 1,319 17	Cords Cords Cords Cords Cords Cords Cords Cords Cords Cords Cords	22.8	\$116,298.40
4	Balsam Fir Jack Pine Mixed Hardwood <i>Beech</i> <i>Black Cherry</i> <i>Ironwood</i> <i>Paper Birch</i> <i>Red Maple</i> <i>Sugar Maple</i> Red Pine White Spruce	Pulpwood	8 15 71 4 10 2 11 5 39 1,574 21	Cords Cords Cords Cords Cords Cords Cords Cords Cords Cords Cords	27.2	\$138,763.20
5	B. T. Aspen Mixed Hardwood <i>Sugar Maple</i> Red Pine	Pulpwood	11 2 2 104	Cords Cords Cords Cords	10.9	\$9,337.60
6	Balsam Fir Mixed Hardwood <i>Black Cherry</i> <i>Ironwood</i> <i>Paper Birch</i> <i>Sugar Maple</i> Red Pine	Pulpwood	17 51 2 2 9 38 948	Cords Cords Cords Cords Cords Cords Cords	19.5	\$83,376.35
7	Balsam Fir Mixed Hardwood <i>Black Cherry</i> <i>Ironwood</i> <i>Paper Birch</i> <i>Sugar Maple</i> Red Pine	Pulpwood	15 46 1 2 8 35 890	Cords Cords Cords Cords Cords Cords Cords	18.3	\$78,237.15
TOTAL:			5,339	Cords		
TOTAL:			63.0	Acres		

Sale Specific Conditions & Requirements

Sale Name: Weather Station Pine

Sale Number: 45-116-24 Seq#: 1

1 - Sale Area

1.2 - Boundaries

1.2.1 - Painted Boundaries (9/19)

The sale boundary and Payment Unit boundaries are marked and identified by blue, red and purple paint. Exterior sale boundary lines against private property are marked with blue paint. Exterior sale boundary lines against state are marked with red paint. Interior Payment Unit boundaries are marked with purple paint. Purple painted trees designating an interior Payment Unit boundary are only to be cut when all surrounding Payment Units have been paid.

2 - Timber Specifications

2.1 - Included Timber

2.1.1 - Clearcut Unit(s) with Unmerchantable Trees (6/14)

Within Payment Unit(s) 2-7, cut all trees that are one (1) inch or more at DBH regardless of merchantability.

2.1.4 - Designated Timber Unit(s) (6/17)

Within Payment Unit(s) 1, all red pine trees that are eight (8) inches or more at DBH and all other species that are two (2) inches or more at DBH are designated for cutting. In addition, red pine that are seven (7) inches or less at DBH may be cut only for operational purposes (see Spec 2.1.9).

2.1.9 - Harvest Exception (12/08)

Do not cut any red pine that are seven (7) inches or less at DBH within Payment Unit 1 other than those that are necessary to remove in order to operate within the sale area. Every effort must be made to preserve the existing red pine that are seven (7) inches or less at DBH and to leave an intact stand upon sale completion. All cut red pine that are seven (7) inches or less at DBH shall be piled separately by products and scaled in the woods unless other scaling arrangements are agreed to by the Unit Manager or his/her representative.

2.1.11 - Description of Timber Note (2/04)

Note that Mixed hardwood includes beech, black cherry, ironwood, paper birch, red maple and sugar maple. Miscellaneous species 1 represents Payment Unit 2 which is sold by the acre.

2.2 - Utilization

2.2.2 - Chipping required (2/18)

Payment Unit 2 must be chip harvested to facilitate proper function of the DNR maintained weather station located within the Payment Unit. The Purchaser has the option to produce sawlogs or pulpwood bolts, but the remaining portion of the trees must be chipped and hauled. If market conditions limit the practicality of chipping, the producer may skid all remaining topwood out of this Payment Unit and scatter in locations approved by the Sale Administrator. The requirement to retain approximately 1/6 to 1/3 of tree tops and limbs less than four inches in diameter does not apply (G. C. & R. 2.2). This is because of the need for maximum weather station functionality and reliability.

2.2.3 - Stump heights (4/07)

Stump heights within the Sale Area shall not exceed 6 inches for all trees. This is in order to facilitate planting operations. A written waiver of this requirement may be obtained if wet summer weather makes winter logging necessary.

3 - Payments

3.3 - Pre-measured Sales

3.3.4 - Dividing Payment Units (7/14)

Payment Unit(s) may be divided at the request of the Purchaser and upon approval of the Unit Manager. Dividing Payment Units is a contract modification which requires a Timber Sale Contract Amendment. There will be only one division per Payment Unit.

3.6 - Payment Unit Cutting Schedule

3.6.1 - Order of Cutting (1/09)

Payment Unit 2 must be paid for and cut before operations can begin in Payment Units 3 and 4.

4 - Transportation

4.1 - Construction

4.1.3 - Slash and Earthen Piles (8/04)

Piles or windrows of earth along roads and landings that have been widened or constructed shall be leveled. Slash from road maintenance or construction, including stumps, shall be dispersed outside the sale boundary.

4.1.4 - Timber Removed for Construction (3/23)

Trees cut or damaged in the process of pre-approved road, landing, or skid trail construction will be decked in an area separate from other Designated Timber and not removed until measured by the Sale Administrator. Payment will be made at contract prices or average prices, if not on the contract.

4.1.6 - Road Construction (4/24)

Construction of new roads or improvements of existing roads shall be done in such a way as to minimize the environmental and visual impacts. Merchantable trees shall be cut and utilized unless otherwise directed. Non-merchantable trees shall be severed and laid flat on the ground. Slash shall be scattered, and not left in windrows and kept a minimum of 10 feet back from the road edge. Stumps shall be set upright, not left on edge, and be moved at least 10 feet away from the road edge. Disturbed soil shall be feathered into the woods and not left in berms or windrows.

4.1.7 - Road Closure (10/11)

All new roads built into the sale must be blocked to vehicle traffic upon completion of the sale. Overgrown roads that are reopened shall be considered new roads. In general, this will require constructing a four (4') foot high berm of stumps and logs covered with earth. These roads must be rendered impassable to cars and trucks. Contact the Sale Administrator for specific details of design and placement.

4.2 - Maintenance

4.2.5 - Two Wheel Drive Condition (2/04)

All existing trail roads on and adjacent to the Sale Area must be passable by two-wheel drive traffic for the duration of the sale.

5 - Operations

5.1 - Notification

5.1.6 - Utility R.O.W. (4/19)

It is the responsibility of the Purchaser to obtain permission from the utility company to utilize the power line R.O.W. for operations. Contact American Transmission Company and Cloverland Electric.

5.2 - Conduct of Operations

5.2.1 - Slash

5.2.1.11 - Slash for Reforestation (3/21)

Within the Payment Units 3-7, chipping is encouraged as it is the most effective and efficient way to mitigate slash for reforestation. Other tactics to mitigate slash for site preparation would need to be approved by the Unit Manager or his/her representative.

5.2.1.12 - Slash for Prescribed Burning (1/05)

To facilitate prescribed burning, slash shall be moved at least 20 feet inside the sale boundary. Slash cannot be windrowed and must be evenly scattered throughout Sale Area if not chipped.

5.2.2 - Hazard Trees/Snags

5.2.2.1 - Den Trees (10/16)

Obvious hollow and/or den trees shall be protected and left standing unless they are a safety hazard.

5.2.3 - Operating Restrictions

5.2.3.6 - Bark Beetle Restriction (12/08)

In the event drought creates a high risk of pine bark beetle infestation, pine is not to be cut during the period March 1 through July 1, unless all portions of trees greater than two inches in diameter are removed from the sale area, reduced to chips, or treated to the satisfaction of the Unit Manager or his/her representative, within fifteen days of being severed from the stump. Pine log decks, pulpwood piles and treetops that are piled for chipping in the fall or winter within a 1/4 mile of susceptible sites must be removed before March 15. Residual slash must not be placed in piles or rows and must be spread over the site for quick drying. The Department of Natural Resources will exercise this specification if the risk of damage warrants.

5.2.32 - Decking/Landing Restoration (9/13)

All decking and landing areas must have the surface area restored to a condition equal to or better than before. This is to ensure the proper regeneration of the stand. Wood debris, chips and "cookies" from trimmings must be removed or scattered away from landing and loading areas and may not be windrowed on the edge.

5.2.37 - No Decking Areas (12/08)

No decking is allowed within 50 feet of the weather station in Payment Unit 2. Any damage to the weather station will be assessed by the DNR and damages will be charged to the Purchaser.

5.2.38 - No Decking Against Live Trees (2/04)

Cut products may not be decked against unmarked or designated leave trees.

5.7 - Protection of Historical Sites

5.7.1 - Historical Sites (7/12)

The Purchaser shall not cut live or dead trees or operate equipment within historical sites. Historical sites are surrounded by green ringed trees that are to be retained. The Purchaser shall protect historical sites from damage by the Purchaser's operations. If Purchaser's operations have cut or damaged historical sites through carelessness, the Purchaser shall pay amount determined by the DNR as fixed, agreed and liquidated damages for each acre or part thereof cut or damaged. The historical site is identified on the Timber Sale Map.

5.8 - Protection of Endangered Species

5.8.5 - Protection of Raptor Nests (3/13)

All trees with raptor nests will be protected if found during harvesting operations. Notification will be made to the Unit Manager or his/her representative who will notify the Wildlife Biologist so an onsite evaluation and recommendation can be made, if necessary.

6 - Safety and Fire Prevention

6.2 - Signing

6.2.1 - Road Posting (10/20)

The Purchaser is responsible for posting and maintaining caution signs on H-40 and Airport Road prior to beginning operations. The road must be posted at appropriate distances from the Sale Area to warn of logging activity and truck traffic. Signs must be removed when harvest operations are suspended or completed. The Purchaser will provide these signs.



TIMBER SALE MAP

This information provided by authority of Part 525, 1994 PA 451, as amended.

Sale Number

45-116-24

Date

09/11/2024

Forest Management Unit

Sault Ste Marie Mgt Unit

County

Mackinac

Mapped By: Gabler

Cruised By: Plato

Scale

1:20,000

Page

1

Of

1

Township
43N / 44N

Range
08W

Section(s) and

Subdivision(s) Sec. 1 W1/2NW,NWSW; Sec. 2 S1/2NW,NENE,S1/2NE,NESW,NWSE; Sec. 34 SESW,SWSE;

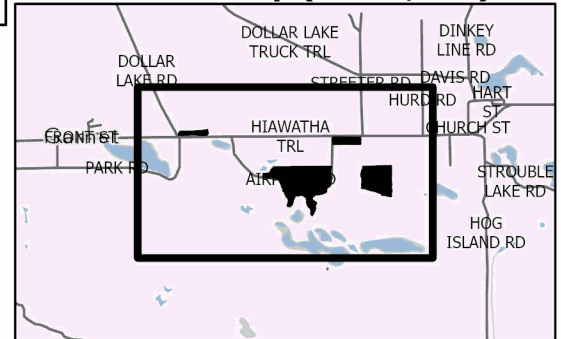
Cover Type

A = Aspen	J = Jack Pine	O = Oak	U = Upland Brush
B = Paper Birch	K = Rock	P = Lowland Poplar	UM = Upland Mix Forest
C = Cedar	L = Lowland Brush	Q = Mixed Swamp Conifer	V = Bog or Marsh
D = Treed Bog	LM = Lowland Mix Forest	R = Red Pine	W = White Pine
E = Swamp Hardwoods	M = Maple, Beech, Birch	S = Black Spruce	X = Non Stocked
F = Spruce/Fir	MC = Mixed Conifer	T = Tamarack	Y = Sand
G = Grass	MD = Mixed Deciduous	Z = Water	
H = Hemlock	N = Marsh		

Density

0 = Non Stocked	5 = Pole Timber Medium
1 = Seedling Sapling Poor	6 = Pole Timber Well
2 = Seedling Sapling Medium	7 = Saw Timber Poor
3 = Seedling Sapling Well	8 = Saw Timber Medium
4 = Pole Timber Poor	9 = Saw Timber Well

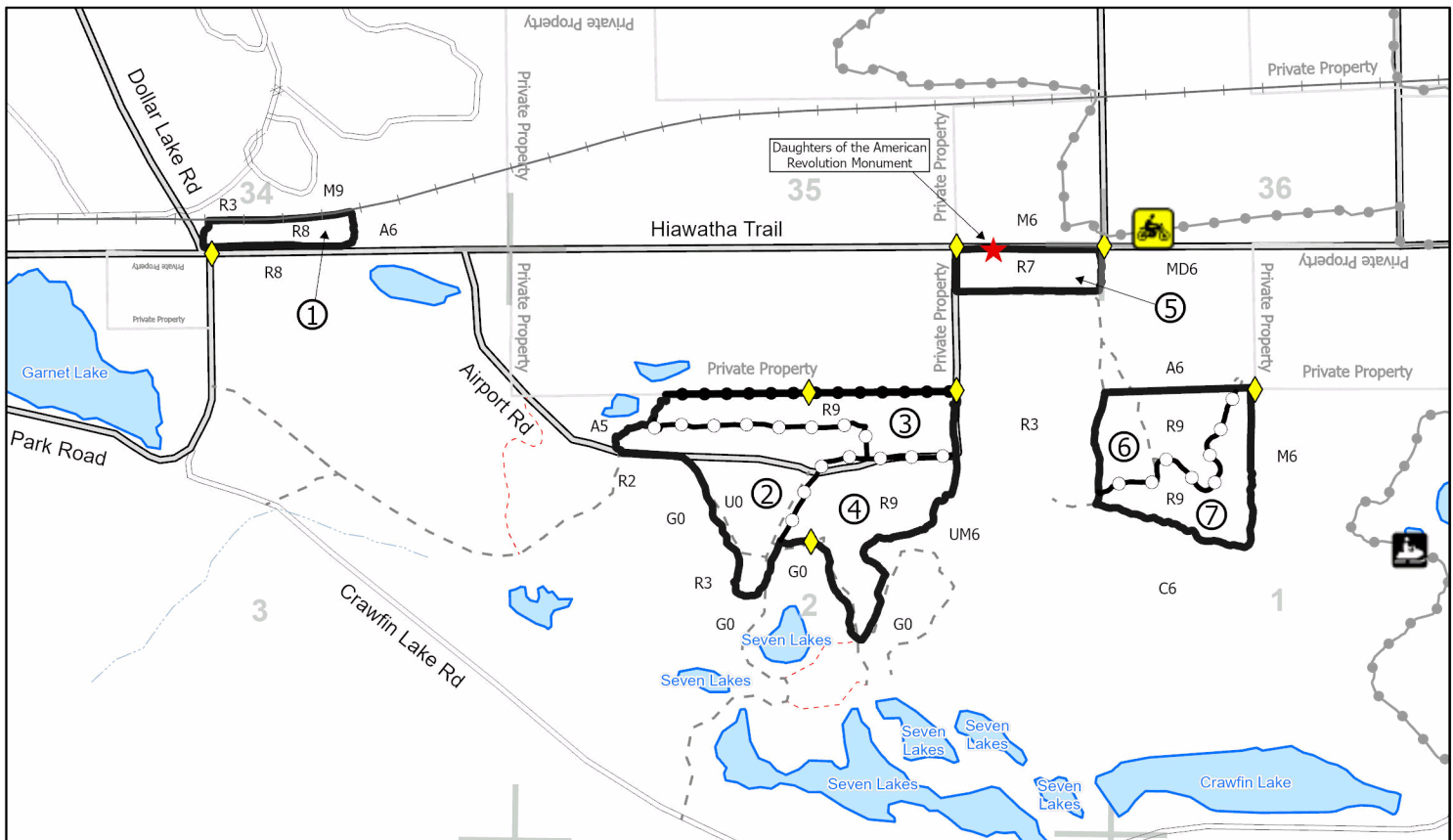
Locator Map (1:100,000)



PU #	Acres	PU #	Acres
1	7.4	5	10.9
2	31.6	6	19.5
3	22.8	7	18.3
4	27.2		

Weather Station Pine
137.7 Acres

0 0.3 0.6 1.2 Miles



Legend

- Against State (Red)
- Payment Unit (Purple)
- Private Line (Blue)
- Recreational Trail
- - - Forest Access Road
- Secondary Forest Road
- - - Administrative Access
- Non-DNR Road
- Private Property Boundary
- Active Railroad
- Intermittent Stream
- ★ DNR Monument
- ◆ Survey Corners
- MIRIS Section Corner
- Lakes and Rivers

Use QR Code to open Map in App



TIMBER SALE INFORMATION

Weaving Weasel Mix (45-119-24)

T44N, R08W, SEC. 14; T44N, R08W, SEC. 23.
Mackinac County (Advertised Price \$42,147.40)

SALE NOTE: A recreation site such as a trail, pathway, or campground is within the sale area or the vicinity. Certain restrictions/specifications may be applicable including time restrictions.

A timber sale contract for this lump sum, sealed bid timber sale will be awarded to the responsible bidder offering the highest sealed bid price. All units of volume listed below were estimated using the Inventory Manager computer program and the new Michigan taper model. Bids must be at or above the following advertised price for each product and species:

<u>PRODUCTS & SPECIES</u>	<u>ESTIMATED UNITS*</u>		<u>ADVERTISED PRICE</u>
Sawtimber			
Black Cherry	3.1	MBF	\$ 98.00 / MBF
Paper Birch	0.4	MBF	\$ 42.00 / MBF
Red Maple	32.6	MBF	\$ 126.00 / MBF
Sugar Maple	45.7	MBF	\$ 324.00 / MBF
Pulpwood			
Balsam Fir	156	Cords	\$ 9.55 / Cord
Jack Pine	16	Cords	\$ 30.60 / Cord
Mixed Hardwood	733	Cords	\$ 15.40 / Cord
Mixed Spruce	113	Cords	\$ 13.10 / Cord
N. White Cedar	4	Cords	\$ 3.30 / Cord
Paper Birch	61	Cords	\$ 5.15 / Cord
Quaking Aspen	71	Cords	\$ 24.00 / Cord
Red Pine	65	Cords	\$ 86.95 / Cord
White Pine	29	Cords	\$ 16.60 / Cord

* The total volume is statistically estimated within plus (+) or minus (-) 12.91 percent. There are an estimated 1,440 cords on this timber sale, plus or minus 186 cords at the 95% confidence level. The estimated units are final and not subject to adjustment. Prospective bidders are urged to examine this timber and to make their own estimates of quantity and quality.

BOND AND PAYMENT SCHEDULE:

1. A bond in the amount of \$3,372.00 to insure faithful performance of the conditions of the contract will be deposited by the successful bidder within 21 days of the sale award.
2. Cutting in any sale or unit without the required advance payment would be considered a trespass.
3. Total payment must be paid in advance or according to the following schedule :
 - (a) Ten percent (10%) of the sale value must be paid within 21 days of the sale award.
 - (b) The 10% down payment will be credited towards the first unit cut.
 - (c) Payment for each of the following units must be made before cutting begins in that unit:

<u>PAYMENT UNIT NUMBER</u>	<u>PERCENT OF TOTAL SALE VALUE</u>
01	16.1%
02	6.6%
03	23.0%
04	15.7%
05	13.8%
06	24.8%

4. If no cutting takes place, the 10% down payment will not be refunded.
5. Operations on the contract issued will terminate on 12/31/2028.

SALE STATISTICS

Volumes were calculated in cubic feet using the Michigan taper model. Cubic foot volume includes all wood inside bark for the product indicated. For display purposes, cubic feet were converted to cords and MBF using a simple conversion factor, e.g. 79 cubic feet per cord and 185 cubic feet per MBF. The cubic foot volumes are precise; the cords and MBF volumes are not. Cubic foot volume cannot be directly converted to cords or boards with precision.

SALE VOLUMES

The total estimated sale volume may not equal the sum of the species/products due to the nature of statistical calculations associated with double sampling methodology.

VOLUME			STATISTICAL RANGE IN CORDS	
TOTAL CUBIC FEET	TOTAL CORDS	PERCENT ERROR	MINIMUM	MAXIMUM
113,778	1,440	12.91%	1,254	1,626

VDU VOLUMES

A VDU is a Volume Determination Unit. Volumes and their associated statistics are calculated at the VDU level and summarized to the sale level. There is often a one to one relationship between a VDU and a Payment Unit, but not always, depending on the cruise design. Refer to the VDU TO PAYMENT UNIT table.

	VOLUME			RANGE IN CORDS	
VDU	TOTAL CUBIC FEET	TOTAL CORDS	PERCENT ERROR	MINIMUM	MAXIMUM
4	16,079	204	26.09%	150	257
8	18,966	240	41.74%	140	340
16	11,145	141	40.76%	84	199
24	32,537	412	21.62%	323	501
54	23,932	303	30.72%	210	396
57	11,120	141	43.24%	80	202
TOTAL:	113,778	1,440		986	1,894

VDU TO PAYMENT UNIT

When a VDU is associated with more than one Payment Unit (PU), the VDU volumes are assigned to the PU based on acres of the VDU within the PU.

VDU	VDU ACRES	PU	PU ACRES
4	16.2	3	16.2
8	10.0	4	10.0
16	9.9	5	9.9
24	25.3	6	25.3
54	18.2	1	18.2
57	8.9	2	8.9
TOTAL:	88.5		88.5

DESCRIPTION OF TIMBER BY PAYMENT UNIT (PU)

PU	MARKET GROUP	PRODUCT	QUANTITY	UNIT	ACRES	ADVERTISE PRICE
1	Balsam Fir Jack Pine Mixed Hardwood <i>American Elm</i> <i>Black Cherry</i> <i>Red Maple</i> <i>Sugar Maple</i> Mixed Spruce <i>White Spruce</i> Paper Birch Quaking Aspen Red Pine White Pine	Pulpwood	36 16 63 3 47 10 3 78 78 13 40 28 29	Cords Cords Cords Cords Cords Cords Cords Cords Cords Cords Cords Cords Cords	18.2	\$6,768.35
2	Black Cherry Paper Birch Red Maple Sugar Maple Balsam Fir Mixed Hardwood <i>Beech</i> <i>Black Cherry</i> <i>Ironwood</i> <i>Red Maple</i> <i>Serviceberry (Juneberry)</i> <i>Sugar Maple</i> Mixed Spruce <i>White Spruce</i> Paper Birch Quaking Aspen	Sawtimber Pulpwood	1.7 0.4 1.1 1.4 16 92 1 12 2 30 2 45 5 5 3 15	MBF MBF MBF MBF Cords Cords Cords Cords Cords Cords Cords Cords Cords Cords Cords Cords	8.9	\$2,786.15
3	Black Cherry Red Maple Sugar Maple Balsam Fir Mixed Hardwood <i>Beech</i> <i>Black Cherry</i> <i>Red Maple</i> <i>Sugar Maple</i> Red Pine	Sawtimber Pulpwood	0.4 6.0 19.6 10 126 15 6 33 72 6	MBF MBF MBF Cords Cords Cords Cords Cords Cords Cords	16.2	\$9,703.20
4	Red Maple Sugar Maple Balsam Fir Mixed Hardwood <i>Black Cherry</i> <i>Red Maple</i> <i>Sugar Maple</i> Mixed Spruce <i>Black Spruce</i> <i>White Spruce</i> N. White Cedar Paper Birch Quaking Aspen Red Pine	Sawtimber Pulpwood	7.2 1.9 12 81 6 68 7 30 7 23 4 45 16 31	MBF MBF Cords Cords Cords Cords Cords Cords Cords Cords Cords Cords Cords Cords	10.0	\$6,602.20
5	Red Maple Sugar Maple Balsam Fir	Sawtimber Pulpwood	2.0 12.4 14	MBF MBF Cords	9.9	\$5,835.50

DESCRIPTION OF TIMBER BY PAYMENT UNIT (PU), CON'T

PU	MARKET GROUP	PRODUCT	QUANTITY	UNIT	ACRES	ADVERTISE PRICE
5 con't	Mixed Hardwood	Pulpwood	93	Cords		
	Beech		2	Cords		
	Red Maple		33	Cords		
	Sugar Maple		58	Cords		
6	Black Cherry	Sawtimber	1.0	MBF	25.3	\$10,452.00
	Red Maple	Pulpwood	16.3	MBF		
	Sugar Maple		10.4	MBF		
	Balsam Fir		68	Cords		
	Mixed Hardwood		278	Cords		
	Beech		13	Cords		
	Black Cherry		3	Cords		
	Red Maple		208	Cords		
	Sugar Maple		54	Cords		
	TOTAL:			81.8		
TOTAL:			1,248	Cords		

Sale Specific Conditions & Requirements

Sale Name: Weaving Weasel Mix

Sale Number: 45-119-24 Seq#: 1

1 - Sale Area

1.2 - Boundaries

1.2.1 - Painted Boundaries (9/19)

The sale boundary and Payment Unit boundaries are marked and identified by red paint. Exterior sale boundary lines against state are marked with red paint. The painted boundary line trees are not Included Timber and are to be protected unless marked with orange paint.

2 - Timber Specifications

2.1 - Included Timber

2.1.3 - Cut Tree Marked Unit(s) (12/08)

Within Payment Unit(s) 2, 3, 5, and 6, all trees are designated for cutting when marked with orange paint above and below stump height, regardless of merchantability. In addition, all balsam fir that are 4.6 inches or more at DBH are designated for cutting. Furthermore, within Payment Unit 2, all aspen that are 4.6 inches or more at DBH are designated for cutting.

2.1.7 - Leave Tree Marked Unit(s) (6/14)

Within Payment Unit(s) 1 and 4, cut all trees that are two (2) inches or more at DBH, except do not cut trees marked with green paint. In addition, within Payment Unit 4, do not cut any hemlock or yellow birch (some have green paint and some do not).

2.1.16 - Timber Along County or Forest Roads (6/14)

Cut and remove all standing trees that are 4.6 inches or more at DBH, within 10 feet cleared ROW of Giddings Road.

Products from these trees should be piled separately to be scaled by the Sale Administrator prior to hauling. The trees will be purchased at contract prices.

3 - Payments

3.3 - Pre-measured Sales

3.3.4 - Dividing Payment Units (7/14)

Payment Unit(s) 1-6 may be divided at the request of the Purchaser and upon approval of the Unit Manager. Dividing Payment Units is a contract modification which requires a Timber Sale Contract Amendment. There will be only one division per Payment Unit.

4 - Transportation

4.1 - Construction

4.1.6 - Road Construction (4/24)

Construction of new roads or improvements of existing roads shall be done in such a way as to minimize the environmental and visual impacts. Merchantable trees shall be cut and utilized unless otherwise directed. Non-merchantable trees shall be severed and laid flat on the ground. Slash shall be scattered, and not left in windrows and kept a minimum of 10 feet back from the road edge. Stumps shall be set upright, not left on edge, and be moved at least 10 feet away from the road edge. Disturbed soil shall be feathered into the woods and not left in berms or windrows.

4.1.7 - Road Closure (10/11)

All new roads built into the sale must be blocked to vehicle traffic upon completion of the sale. Overgrown roads that are reopened shall be considered new roads. In general, this will require constructing double earthen berms at strategic locations. Stumps and brush must be placed along the remainder of the trail. These roads must be rendered impassable to cars and trucks. All stumps from road building and landing construction must be reserved to block any newly constructed roads upon completion of the sale. These stumps must be scattered along the road system to prohibit vehicular movement. Contact the Sale Administrator for specific details of design and placement.

4.2 - Maintenance

4.2.3 - Road maintenance (8/13)

The following road maintenance is required: Within 60 days of completion of hauling, or if no hauling occurs for 60 days, the road must be maintained and graded. This includes cleaning of drainage areas, grading, crowning and filing with gravel, if necessary. Damages will be assessed if grading/repair does not occur.

4.2.5 - Two Wheel Drive Condition (2/04)

All existing trail roads on and adjacent to the Sale Area must be passable by two-wheel drive traffic for the duration of the sale.

5 - Operations

5.2 - Conduct of Operations

5.2.1 - Slash

5.2.1.11 - Slash for Reforestation (3/21)

To facilitate reforestation, slash within Payment Unit 2 shall be left evenly distributed. Tops shall not be crushed or ran over unless in a main skid trail. Preferably, unbroken tops shall be left whole and intact, and placed within gaps created during harvesting operations.

5.2.2 - Hazard Trees/Snags

5.2.2.1 - Den Trees (10/16)

Obvious hollow and/or den trees shall be protected and left standing unless they are a safety hazard.

5.2.3 - Operating Restrictions

5.2.3.3 - Bark Slippage Restriction (3/09)

Within Payment Unit(s) 3, 5, and 6, unless changed by written agreement, cutting and skidding are not permitted during the period of May 1 to July 15. This restriction is because of bark slippage.

5.2.4 - Dead and Down Creation

5.2.4.3 - Dead and Down Creation, Dead Trees (6/07)

Except as provided for in General Condition and Requirement 5.2.2, no dead trees, standing or down, are to be cut, skidded, or processed.

5.2.32 - Decking/Landing Restoration (9/13)

All decking and landing areas must have the surface area restored to a condition equal to or better than before. This is to ensure the proper regeneration of the stand. Wood debris, chips and "cookies" from trimmings must be removed or scattered away from landing and loading areas and may not be windrowed on the edge.

5.2.38 - No Decking Against Live Trees (2/04)

Cut products may not be decked against unmarked or designated leave trees.

5.2.39 - ORV Trail/Route Protection (4/18)

The ORV trail or route is shown on the Timber Sale Map. Currently the trail is not being used but there are plans to open it back up in the future. If the trail is opened back up by the time of beginning operations, then the following condition would apply, otherwise leave slash scattered in the units and do not worry about protecting the trail. All stumps within 5 feet of the trail must be cut flush with the ground. Maintain a 20-foot-wide slash, debris, and rut free zone daily using the ORV trail or route as the centerline. Do not run equipment down the ORV trail or route. Skidding across the trail or route may only occur in locations approved by the Sale Administrator.

5.8 - Protection of Endangered Species

5.8.5 - Protection of Raptor Nests (3/13)

All trees with raptor nests will be protected if found during harvesting operations. Notification will be made to the Unit Manager or his/her representative who will notify the Wildlife Biologist so an onsite evaluation and recommendation can be made, if necessary.

6 - Safety and Fire Prevention

6.2 - Signing

6.2.1 - Road Posting (10/20)

The Purchaser is responsible for posting and maintaining caution signs on Giddings Road prior to beginning operations. The road must be posted at appropriate distances from the Sale Area to warn of logging activity and truck traffic. Signs must be removed when harvest operations are suspended or completed. The Purchaser will provide these signs.

6.2.3 - Recreational Trail Posting (10/20)

The Purchaser is responsible for posting and maintaining caution signs on the ORV trail prior to beginning operations. The trail must be posted at appropriate distances from the Sale Area to warn of logging activity and truck traffic at both ends of the trail. Signs must be removed when harvest operations are suspended or completed. The Purchaser will provide these signs.



TIMBER SALE MAP

This information provided by authority of Part 525, 1994 PA 451, as amended.

Sale Number

45-119-24

Date

08/30/2024

Forest Management Unit

Sault Ste Marie Mgt Unit

County

Mackinac

Mapped By: Gabler

Cruised By: Brinks

Scale

1:15,840

Page

1

Of

1

Township
44N

Range
08W

Section(s) and

Subdivision(s) Sec. 14 S1/2SW,SWSE; Sec. 23 NW,NWNE,NESW,SE;

Cover Type

A = Aspen	J = Jack Pine	O = Oak	U = Upland Brush
B = Paper Birch	K = Rock	P = Lowland Poplar	UM = Upland Mix Forest
C = Cedar	L = Lowland Brush	Q = Mixed Swamp Conifer	V = Bog or Marsh
D = Treed Bog	LM = Lowland Mix Forest	R = Red Pine	W = White Pine
E = Swamp Hardwoods	M = Maple, Beech, Birch	S = Black Spruce	X = Non Stocked
F = Spruce/Fir	MC = Mixed Conifer	T = Tamarack	Y = Sand
G = Grass	MD = Mixed Deciduous	Z = Water	
H = Hemlock	N = Marsh		

Density

0 = Non Stocked	5 = Pole Timber Medium
1 = Seedling Sapling Poor	6 = Pole Timber Well
2 = Seedling Sapling Medium	7 = Saw Timber Poor
3 = Seedling Sapling Well	8 = Saw Timber Medium
4 = Pole Timber Poor	9 = Saw Timber Well

Locator Map (1:100,000)

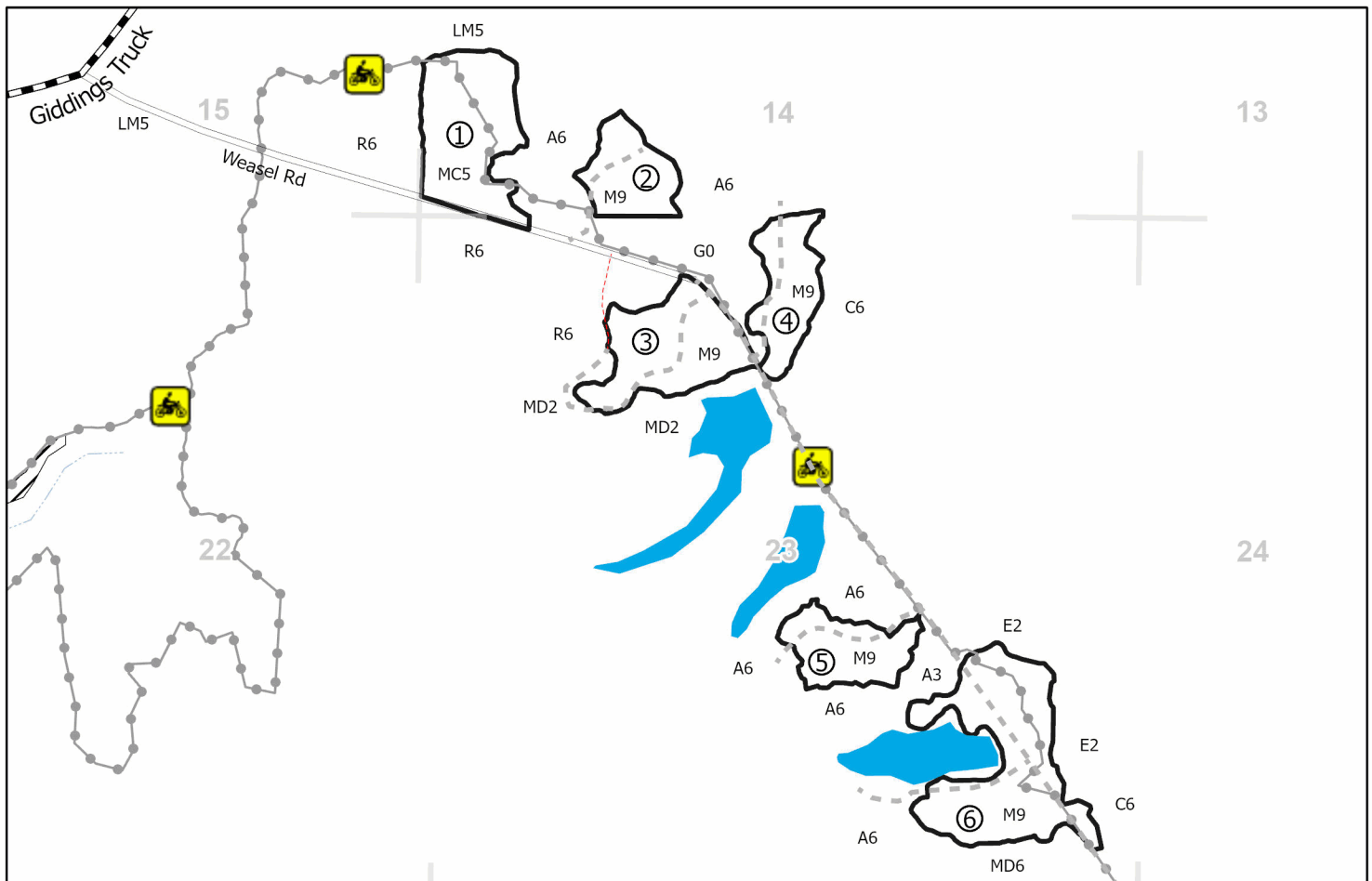


PU #	Acres	PU #	Acres
1	18.2	4	10
2	8.9	5	9.9
3	16.2	6	25.3

Weaving Weasel Mix

88.5 Acres

0 0.25 0.5 1 Miles



Legend

- Against State (Red)
- Secondary Forest Road
- Administrative Access
- Recreational Trail
- Forest Access Route
- Primary Forest Road

Use QR Code to open Map in App



TIMBER SALE INFORMATION

Strouble's Hurried Hardwood (45-122-24)

T43N, R07W, SEC. 5; T43N, R07W, SEC. 6; T43N, R07W, SEC. 7; T43N, R07W, SEC. 8.
Mackinac County (Advertised Price \$102,591.55)

A timber sale contract for this lump sum, sealed bid timber sale will be awarded to the responsible bidder offering the highest sealed bid price. All units of volume listed below were estimated using the Inventory Manager computer program and the new Michigan taper model. Bids must be at or above the following advertised price for each product and species:

<u>PRODUCTS & SPECIES</u>	<u>ESTIMATED UNITS*</u>		<u>ADVERTISED PRICE</u>
Sawtimber			
Red Maple	26.1	MBF	\$ 126.00 / MBF
Sugar Maple	204.1	MBF	\$ 324.00 / MBF
Yellow Birch	7.4	MBF	\$ 58.00 / MBF
Pulpwood			
Balsam Fir	93	Cords	\$ 9.55 / Cord
Mixed Aspen	313	Cords	\$ 24.00 / Cord
Mixed Hardwood	1,469	Cords	\$ 15.40 / Cord
Mixed Spruce	33	Cords	\$ 13.10 / Cord
N. White Cedar	163	Cords	\$ 3.30 / Cord
Paper Birch	115	Cords	\$ 5.15 / Cord
Tamarack	5	Cords	\$ 2.15 / Cord
White Pine	9	Cords	\$ 16.60 / Cord

* The total volume is statistically estimated within plus (+) or minus (-) 11.43 percent. There are an estimated 2,755 cords on this timber sale, plus or minus 315 cords at the 95% confidence level. The estimated units are final and not subject to adjustment. Prospective bidders are urged to examine this timber and to make their own estimates of quantity and quality.

BOND AND PAYMENT SCHEDULE:

1. A bond in the amount of \$5,130.00 to insure faithful performance of the conditions of the contract will be deposited by the successful bidder within 21 days of the sale award.
2. Cutting in any sale or unit without the required advance payment would be considered a trespass.
3. Total payment must be paid in advance or according to the following schedule :
 - (a) Ten percent (10%) of the sale value must be paid within 21 days of the sale award.
 - (b) The 10% down payment will be credited towards the first unit cut.
 - (c) Payment for each of the following units must be made before cutting begins in that unit:

<u>PAYMENT UNIT NUMBER</u>	<u>PERCENT OF TOTAL SALE VALUE</u>
01	16.5%
02	18.8%
03	8.0%
04	10.9%
05	9.2%
06	16.5%
07	17.7%
08	2.4%

4. If no cutting takes place, the 10% down payment will not be refunded.
5. Operations on the contract issued will terminate on 12/31/2028.

SALE STATISTICS

Volumes were calculated in cubic feet using the Michigan taper model. Cubic foot volume includes all wood inside bark for the product indicated. For display purposes, cubic feet were converted to cords and MBF using a simple conversion factor, e.g. 79 cubic feet per cord and 185 cubic feet per MBF. The cubic foot volumes are precise; the cords and MBF volumes are not. Cubic foot volume cannot be directly converted to cords or boards with precision.

SALE VOLUMES

The total estimated sale volume may not equal the sum of the species/products due to the nature of statistical calculations associated with double sampling methodology.

VOLUME			STATISTICAL RANGE IN CORDS	
TOTAL CUBIC FEET	TOTAL CORDS	PERCENT ERROR	MINIMUM	MAXIMUM
217,676	2,755	11.43%	2,440	3,071

VDU VOLUMES

A VDU is a Volume Determination Unit. Volumes and their associated statistics are calculated at the VDU level and summarized to the sale level. There is often a one to one relationship between a VDU and a Payment Unit, but not always, depending on the cruise design. Refer to the VDU TO PAYMENT UNIT table.

	VOLUME			RANGE IN CORDS	
VDU	TOTAL CUBIC FEET	TOTAL CORDS	PERCENT ERROR	MINIMUM	MAXIMUM
34	28,536	361	22.48%	280	442
55	25,905	328	39.76%	198	458
83	46,880	593	24.90%	446	741
84	13,770	174	30.38%	121	227
341	102,584	1,299	17.78%	1,068	1,529
TOTAL:	217,676	2,755		2,112	3,399

VDU TO PAYMENT UNIT

When a VDU is associated with more than one Payment Unit (PU), the VDU volumes are assigned to the PU based on acres of the VDU within the PU.

VDU	VDU ACRES	PU	PU ACRES
34	39.1	1	39.1
55	10.0	8	10.0
83	11.5	7	11.5
84	4.5	7	4.5
341	130.7	2	39.0
341	130.7	3	16.4
341	130.7	4	22.5
341	130.7	5	18.9
341	130.7	6	33.9
TOTAL:	718.6		195.8

DESCRIPTION OF TIMBER BY PAYMENT UNIT (PU)

PU	MARKET GROUP	PRODUCT	QUANTITY	UNIT	ACRES	ADVERTISE PRICE
1	Red Maple	Sawtimber	3.1	MBF	39.1	\$16,903.40
	Sugar Maple		38.6	MBF		
	Balsam Fir	Pulpwood	16	Cords		
	Mixed Aspen		4	Cords		
	<i>B. T. Aspen</i>		4	<i>Cords</i>		
	Mixed Hardwood		244	Cords		
	<i>Beech</i>		4	<i>Cords</i>		
	<i>Red Maple</i>		16	<i>Cords</i>		
	<i>Sugar Maple</i>		223	<i>Cords</i>		
	<i>Yellow Birch</i>		1	<i>Cords</i>		
2	Sugar Maple	Sawtimber	47.0	MBF	39.0	\$19,441.10
	Balsam Fir	Pulpwood	2	Cords		
	Mixed Hardwood		271	Cords		
	<i>Beech</i>		19	<i>Cords</i>		
	<i>Black Cherry</i>		1	<i>Cords</i>		
	<i>Red Maple</i>		10	<i>Cords</i>		
	<i>Sugar Maple</i>		241	<i>Cords</i>		
	Paper Birch		4	Cords		
3	Sugar Maple	Sawtimber	19.7	MBF	16.4	\$8,173.65
	Balsam Fir	Pulpwood	1	Cords		
	Mixed Hardwood		115	Cords		
	<i>Beech</i>		8	<i>Cords</i>		
	<i>Black Cherry</i>		1	<i>Cords</i>		
	<i>Red Maple</i>		4	<i>Cords</i>		
	<i>Sugar Maple</i>		102	<i>Cords</i>		
	Paper Birch		2	Cords		
4	Sugar Maple	Sawtimber	27.1	MBF	22.5	\$11,218.05
	Balsam Fir	Pulpwood	1	Cords		
	Mixed Hardwood		157	Cords		
	<i>Beech</i>		11	<i>Cords</i>		
	<i>Black Cherry</i>		1	<i>Cords</i>		
	<i>Red Maple</i>		6	<i>Cords</i>		
	<i>Sugar Maple</i>		139	<i>Cords</i>		
	Paper Birch		2	Cords		
5	Sugar Maple	Sawtimber	22.7	MBF	18.9	\$9,407.45
	Balsam Fir	Pulpwood	1	Cords		
	Mixed Hardwood		132	Cords		
	<i>Beech</i>		9	<i>Cords</i>		
	<i>Black Cherry</i>		1	<i>Cords</i>		
	<i>Red Maple</i>		5	<i>Cords</i>		
	<i>Sugar Maple</i>		117	<i>Cords</i>		
	Paper Birch		2	Cords		
6	Sugar Maple	Sawtimber	40.8	MBF	33.9	\$16,903.55
	Balsam Fir	Pulpwood	2	Cords		
	Mixed Hardwood		237	Cords		
	<i>Beech</i>		17	<i>Cords</i>		
	<i>Black Cherry</i>		2	<i>Cords</i>		
	<i>Red Maple</i>		8	<i>Cords</i>		
	<i>Sugar Maple</i>		210	<i>Cords</i>		
	Paper Birch		3	Cords		
7	Red Maple	Sawtimber	23.0	MBF	16.0	\$18,131.35
	Sugar Maple		8.2	MBF		
	Yellow Birch		7.4	MBF		
	Balsam Fir	Pulpwood	41	Cords		
	Mixed Aspen		278	Cords		

DESCRIPTION OF TIMBER BY PAYMENT UNIT (PU), CON'T

PU	MARKET GROUP	PRODUCT	QUANTITY	UNIT	ACRES	ADVERTISE PRICE
7 con't	<i>B. T. Aspen</i>	<i>Pulpwood</i>	211	<i>Cords</i>		
	<i>Quaking Aspen</i>		67	<i>Cords</i>		
	Mixed Hardwood		304	Cords		
	<i>Beech</i>		7	<i>Cords</i>		
	<i>Red Maple</i>		129	<i>Cords</i>		
	<i>Sugar Maple</i>		108	<i>Cords</i>		
	<i>Yellow Birch</i>		60	<i>Cords</i>		
	Mixed Spruce		2	Cords		
	<i>White Spruce</i>		2	<i>Cords</i>		
	Paper Birch		44	Cords		
	White Pine		9	Cords		
8	Balsam Fir	Pulpwood	29	Cords	10.0	\$2,413.00
	Mixed Aspen		31	Cords		
	<i>Quaking Aspen</i>		31	<i>Cords</i>		
	Mixed Hardwood		9	Cords		
	<i>Red Maple</i>		9	<i>Cords</i>		
	Mixed Spruce		31	Cords		
	<i>Black Spruce</i>		8	<i>Cords</i>		
	<i>White Spruce</i>		23	<i>Cords</i>		
	N. White Cedar		163	Cords		
	Paper Birch		58	Cords		
	Tamarack		5	Cords		
TOTAL:			237.6	MBF		
TOTAL:			2,200	Cords		

Sale Specific Conditions & Requirements

Sale Name: Strouble's Hurried Hardwood

Sale Number: 45-122-24 Seq#: 1

1 - Sale Area

1.2 - Boundaries

1.2.1 - Painted Boundaries (9/19)

The sale boundary and Payment Unit boundaries are marked and identified by blue, red and yellow paint, as well as forest roads. Exterior sale boundary lines against private property are marked with blue paint. Exterior sale boundary lines against state are marked with red paint. Interior Payment Unit boundaries are marked with yellow paint, with the exception of the interior Payment Unit boundaries between Payment Units 2 and 3 and Payment Units 4 and 5 which are unpainted and designated by the forest road. The painted boundary line trees are not Included Timber and are to be protected unless marked with orange paint.

2 - Timber Specifications

2.1 - Included Timber

2.1.1 - Clearcut Unit(s) with Unmerchantable Trees (6/14)

Within Payment Unit(s) 7 and 8, cut all trees that are two (2) inches or more at DBH regardless of merchantability. Within Payment Unit 8, do not cut any pine, oak, hemlock or yellow birch.

2.1.3 - Cut Tree Marked Unit(s) (12/08)

Within Payment Unit(s) 1-6, all trees are designated for cutting when marked with orange paint above and below stump height, regardless of merchantability. In addition, within Payment Units 2-6 cut all aspen that are two (2) inches or more at DBH.

3 - Payments

3.3 - Pre-measured Sales

3.3.4 - Dividing Payment Units (7/14)

Payment Unit(s) 1-8 may be divided at the request of the Purchaser and upon approval of the Unit Manager. Dividing Payment Units is a contract modification which requires a Timber Sale Contract Amendment. There will be only one division per Payment Unit.

3.4 - Damaged Timber

3.4.1 - Damaged timber (7/16)

General Condition and Requirement 3.4 Damaged Timber, defines liquidated damages for undesignated live merchantable trees which are cut or injured. In addition, extreme care should be taken to avoid damage to tree seedlings and saplings within Payment Units 1-6.

Within the Sale Area, if more than 20% of the tree seedlings or saplings (1/4" to 4.5" DBH) within a specified portion of the Sale Area are damaged, liquidated damages will be assessed at \$250 per acre for all acreage within that specified portion of the Sale Area that was damaged.

4 - Transportation

4.1 - Construction

4.1.6 - Road Construction (4/24)

Construction of new roads or improvements of existing roads shall be done in such a way as to minimize the environmental and visual impacts. Merchantable trees shall be cut and utilized unless otherwise directed. Non-merchantable trees shall be severed and laid flat on the ground. Slash shall be scattered, and not left in windrows and kept a minimum of 10 feet back from the road edge. Stumps shall be set upright, not left on edge, and be moved at least 10 feet away from the road edge. Disturbed soil shall be feathered into the woods and not left in berms or windrows.

4.1.7 - Road Closure (10/11)

All new roads built into the sale must be blocked to vehicle traffic upon completion of the sale. Overgrown roads that are reopened shall be considered new roads. In general, this will require constructing double earthen berms at strategic locations. Stumps and brush must be placed along the remainder of the trail. These roads must be rendered impassable to cars and trucks. All stumps from road building and landing construction must be reserved to block any newly constructed roads upon completion of the sale. These stumps must be scattered along the road system to prohibit vehicular movement. Contact the Sale Administrator for specific details of design and placement.

4.2 - Maintenance

4.2.5 - Two Wheel Drive Condition (2/04)

All existing trail roads on and adjacent to the Sale Area must be passable by two-wheel drive traffic for the duration of the sale.

4.3 - Public Right-of-Way

4.3.2 - County R-O-W (12/06)

The County must be contacted prior to operations along the County Road R-O-W. This applies to the Payment Units along Strouble Lake Road.

5 - Operations

5.2 - Conduct of Operations

5.2.1 - Slash

5.2.1.11 - Slash for Reforestation (3/21)

To facilitate reforestation, within Payment Units 1-6 slash shall be left unevenly distributed. Tops shall not be crushed or ran over unless in main skid trails. Preferably, unbroken tops shall be left whole and intact, and placed within gaps created during harvesting operations.

5.2.2 - Hazard Trees/Snags

5.2.2.1 - Den Trees (10/16)

Obvious hollow and/or den trees shall be protected and left standing unless they are a safety hazard.

5.2.3 - Operating Restrictions

5.2.3.3 - Bark Slippage Restriction (3/09)

Within Payment Unit(s) 1-6, unless changed by written agreement, cutting and skidding are not permitted during the period of May 1 to July 15. This restriction is because of bark slippage.

5.2.4 - Dead and Down Creation

5.2.4.3 - Dead and Down Creation, Dead Trees (6/07)

Except as provided for in General Condition and Requirement 5.2.2, no dead trees, standing or down, are to be cut, skidded, or processed.

5.2.17 - Timber Mats and Interlocking Composite Mats (5/23)

Some roads or skid trails may require extra protection such as that afforded by timber mats, interlocking composite mats, or another approved system. If available, mats may be borrowed from the DNR. A Timber Sale Contract Amendment will be used to document the Purchaser's use of the DNR's mats. Contact the Sale Administrator regarding availability and pick-up. Timber mats are available from various field offices. Composite mats are only available from the Grayling field office and the Marquette ICC. The Purchaser is responsible for picking up and hauling the mats to and from the site. The composite mats will require DNR staff onsite for installation and removal. Contact the Sale Administrator to schedule at least 30 days before desired install/removal date. All mats must be cleaned prior to drop off. This may include, but is not limited to, power washing and brushing to remove mud and debris. A charge of \$700.00 per timber mat and \$2,000.00 per composite mat will be assessed for all damaged or non-returned mats. Damage for the crane/timber mats is defined as three or more broken cants. Damage for the composite mats is defined as cracked or broken mats.

5.2.22 - Operating Caution

5.2.22.1 - Operating Caution (6/11)

It is recommended, but not required, that within Payment Unit(s) 8, cutting and skidding occur during dry summer or frozen winter conditions. The reason for the recommendation is because of poorly drained soils.

5.2.32 - Decking/Landing Restoration (9/13)

All decking and landing areas must have the surface area restored to a condition equal to or better than before. This is to ensure the proper regeneration of the stand. Wood debris, chips and "cookies" from trimmings must be removed or scattered away from landing and loading areas and may not be windrowed on the edge.

5.2.37 - No Decking Areas (12/08)

No decking is allowed within 50 feet of Strouble Lake Road without permission of the county road commission.

5.8 - Protection of Endangered Species

5.8.5 - Protection of Raptor Nests (3/13)

All trees with raptor nests will be protected if found during harvesting operations. Notification will be made to the Unit Manager or his/her representative who will notify the Wildlife Biologist so an onsite evaluation and recommendation can be made, if necessary.

6 - Safety and Fire Prevention

6.2 - Signing

6.2.1 - Road Posting (10/20)

The Purchaser is responsible for posting and maintaining caution signs on Strouble Lake Road prior to beginning operations. The road must be posted at appropriate distances from the Sale Area to warn of logging activity and truck traffic. Signs must be removed when harvest operations are suspended or completed. The Purchaser will provide these signs.

TIMBER SALE MAP

This information provided by authority of Part 525, 1994 PA 451, as amended.

Sale Number 45-122-24	Date 09/30/2024	
Scale 1:15,840	Page 1	Of 1

Forest Management Unit		County	Mapped By: Brinks	Scale 1:15,840	Page 1	Of 1
Sault Ste Marie Mgt Unit		Mackinac	Cruised By: Sault Unit Staff			
Township 43N	Range 07W	Section(s) and Subdivision(s) Sec. 5 S1/2SW; Sec. 6 SESE; Sec. 7 NENE; Sec. 8 NW,NWNE,S1/2NE,E1/2SW,W1/2SE;				

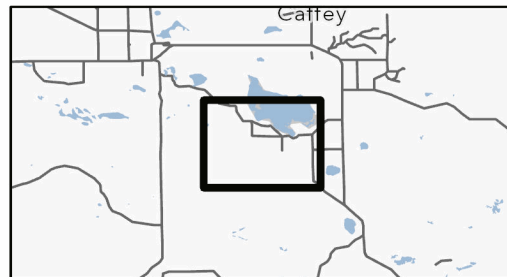
Cover Type

A = Aspen	J = Jack Pine	O = Oak	U = Upland Brush
B = Paper Birch	K = Rock	P = Lowland Poplar	UM = Upland Mix Forest
C = Cedar	L = Lowland Brush	Q = Mixed Swamp Conifer	V = Bog or Marsh
D = Treed Bog	LM = Lowland Mix Forest	R = Red Pine	W = White Pine
E = Swamp Hardwoods	M = Maple, Beech, Birch	S = Black Spruce	X = Non Stocked
F = Spruce/Fir	MC = Mixed Conifer	T = Tamarack	Y = Sand
G = Grass	MD = Mixed Deciduous		Z = Water
H = Hemlock	N = Marsh		

Density

0 = Non Stocked	5 = Pole Timber Medium
1 = Seedling Sapling Poor	6 = Pole Timber Well
2 = Seedling Sapling Medium	7 = Saw Timber Poor
3 = Seedling Sapling Well	8 = Saw Timber Medium
4 = Pole Timber Poor	9 = Saw Timber Well

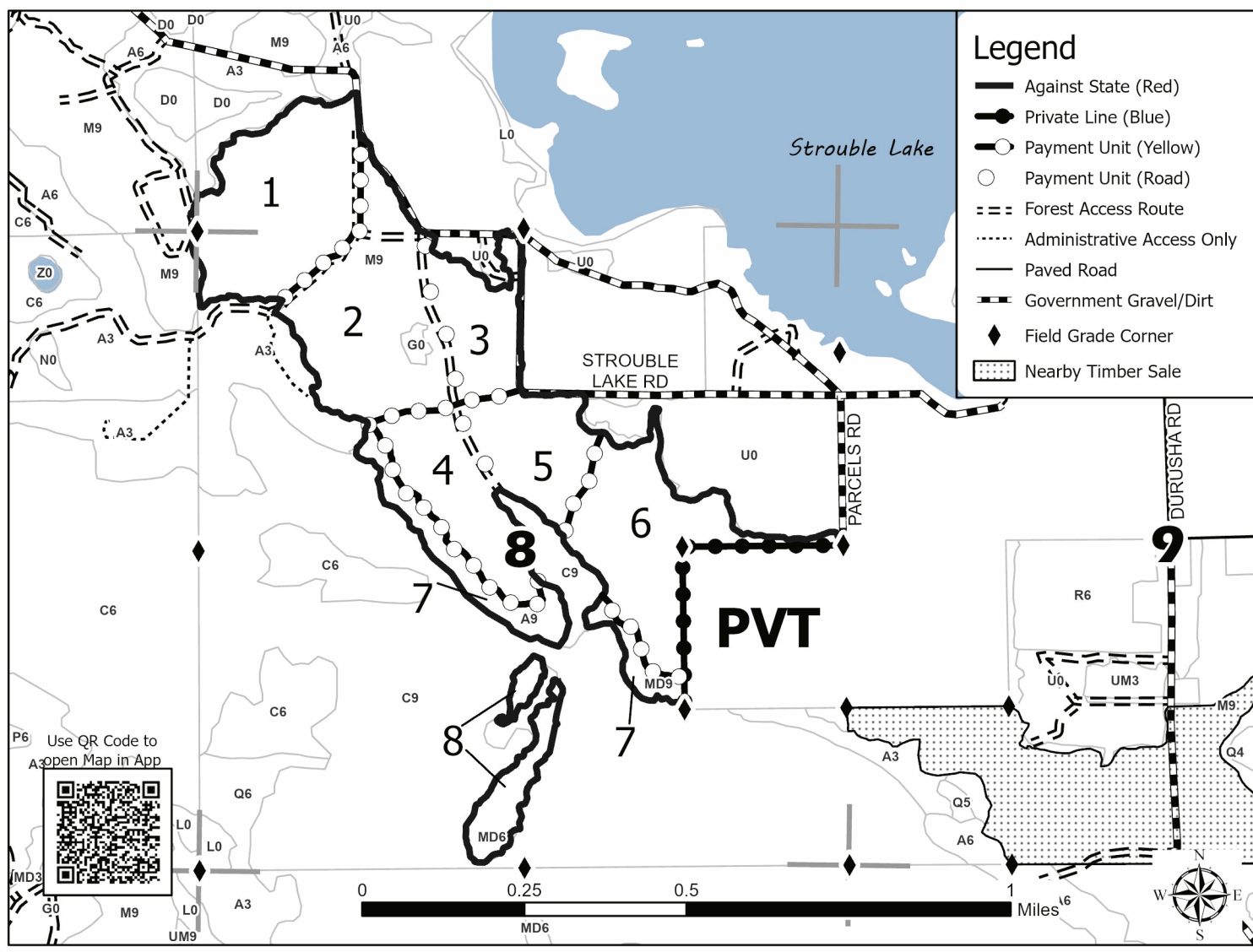
Locator Map 1:200,000



PU #	Acres	PU #	Acres
1	39.1	5	18.9
2	39	6	33.9
3	16.5	7	16
4	22.5	8	10

Strouble's Hurried Hardwood

195.8 Acres



TIMBER SALE INFORMATION

Move Along Mix (45-112-23)

T43N, R07W, SEC. 30; T43N, R08W, SEC. 25; T43N, R08W, SEC. 36.
Mackinac County (Advertised Price \$16,659.00)

SALE NOTE: Payment Units 3, 4, and 5 are optional to harvest due to access being difficult. Removing these Payment Units is a contract modification which requires a Timber Sale Contract Amendment. This sale has been reduced due to "no bid" on previous advertisement.

A recreation site such as a trail, pathway, or campground is within the sale area or the vicinity. Certain restrictions/specifications may be applicable including time restrictions.

A timber sale contract for this lump sum, sealed bid timber sale will be awarded to the responsible bidder offering the highest sealed bid price. All units of volume listed below were estimated using the Inventory Manager computer program and the new Michigan taper model. Bids must be at or above the following advertised price for each product and species:

<u>PRODUCTS & SPECIES</u>	<u>ESTIMATED UNITS*</u>	<u>ADVERTISED PRICE</u>
Pulpwood		
Balsam Fir	210 Cords	\$ 6.40 / Cord
Mixed Hardwood	395 Cords	\$ 10.25 / Cord
Mixed Spruce	969 Cords	\$ 8.70 / Cord
N. White Cedar	44 Cords	\$ 2.20 / Cord
Paper Birch	297 Cords	\$ 3.45 / Cord
Quaking Aspen	11 Cords	\$ 16.00 / Cord
Tamarack	17 Cords	\$ 1.45 / Cord
White Pine	137 Cords	\$ 11.05 / Cord

* The total volume is statistically estimated within plus (+) or minus (-) 23.67 percent. There are an estimated 2,081 cords on this timber sale, plus or minus 493 cords at the 95% confidence level. The estimated units are final and not subject to adjustment. Prospective bidders are urged to examine this timber and to make their own estimates of quantity and quality.

BOND AND PAYMENT SCHEDULE:

1. A bond in the amount of \$1,666.00 to insure faithful performance of the conditions of the contract will be deposited by the successful bidder within 21 days of the sale award.
2. Cutting in any sale or unit without the required advance payment would be considered a trespass.
3. Total payment must be paid in advance or according to the following schedule :
 - (a) Ten percent (10%) of the sale value must be paid within 21 days of the sale award.
 - (b) The 10% down payment will be credited towards the first unit cut.
 - (c) Payment for each of the following units must be made before cutting begins in that unit:

<u>PAYMENT UNIT NUMBER</u>	<u>PERCENT OF TOTAL SALE VALUE</u>
01	5.9%
02	17.0%
03	42.4%
04	17.0%
05	17.7%

4. If no cutting takes place, the 10% down payment will not be refunded.
5. Operations on the contract issued will terminate on 06/30/2029.

SALE STATISTICS

Volumes were calculated in cubic feet using the Michigan taper model. Cubic foot volume includes all wood inside bark for the product indicated. For display purposes, cubic feet were converted to cords and MBF using a simple conversion factor, e.g. 79 cubic feet per cord and 185 cubic feet per MBF. The cubic foot volumes are precise; the cords and MBF volumes are not. Cubic foot volume cannot be directly converted to cords or boards with precision.

SALE VOLUMES

The total estimated sale volume may not equal the sum of the species/products due to the nature of statistical calculations associated with double sampling methodology.

VOLUME			STATISTICAL RANGE IN CORDS	
TOTAL CUBIC FEET	TOTAL CORDS	PERCENT ERROR	MINIMUM	MAXIMUM
164,410	2,081	23.67%	1,588	2,574

VDU VOLUMES

A VDU is a Volume Determination Unit. Volumes and their associated statistics are calculated at the VDU level and summarized to the sale level. There is often a one to one relationship between a VDU and a Payment Unit, but not always, depending on the cruise design. Refer to the VDU TO PAYMENT UNIT table.

	VOLUME			RANGE IN CORDS	
VDU	TOTAL CUBIC FEET	TOTAL CORDS	PERCENT ERROR	MINIMUM	MAXIMUM
6	11,426	145	50.93%	71	218
17	77,386	980	18.31%	800	1,159
66	4,974	63	55.18%	28	98
69	12,900	163	39.19%	99	227
78	57,725	731	17.90%	600	861
TOTAL:	164,410	2,081		1,599	2,564

VDU TO PAYMENT UNIT

When a VDU is associated with more than one Payment Unit (PU), the VDU volumes are assigned to the PU based on acres of the VDU within the PU.

VDU	VDU ACRES	PU	PU ACRES
6	6.0	1	6.0
17	36.5	2	4.7
17	36.5	3	31.7
17	36.5	4	0.1
66	6.3	2	6.3
69	14.2	2	14.2
78	32.5	3	2.2
78	32.5	4	14.8
78	32.5	5	15.5
TOTAL:	233.5		95.5

DESCRIPTION OF TIMBER BY PAYMENT UNIT (PU)

PU	MARKET GROUP	PRODUCT	QUANTITY	UNIT	ACRES	ADVERTISE PRICE
1	Balsam Fir Mixed Hardwood <i>Red Maple</i> Mixed Spruce <i>Black Spruce</i> N. White Cedar Paper Birch Quaking Aspen White Pine	Pulpwood	10 22 22 36 36 44 15 5 13	Cords Cords Cords Cords Cords Cords Cords Cords Cords	6.0	\$974.90
2	Balsam Fir Mixed Hardwood <i>Red Maple</i> <i>Yellow Birch</i> Mixed Spruce <i>Black Spruce</i> <i>White Spruce</i> Paper Birch Tamarack White Pine	Pulpwood	30 61 58 3 182 163 19 47 8 24	Cords Cords Cords Cords Cords Cords Cords Cords Cords Cords	25.2	\$2,839.60
3	Balsam Fir Mixed Hardwood <i>Red Maple</i> Mixed Spruce <i>Black Spruce</i> <i>White Spruce</i> Paper Birch Tamarack White Pine	Pulpwood	159 237 237 243 233 10 178 3 80	Cords Cords Cords Cords Cords Cords Cords Cords Cords	33.9	\$7,063.40
4	Balsam Fir Mixed Hardwood <i>Red Maple</i> Mixed Spruce <i>Black Spruce</i> Paper Birch Quaking Aspen Tamarack White Pine	Pulpwood	6 37 37 248 248 28 3 3 10	Cords Cords Cords Cords Cords Cords Cords Cords Cords	14.9	\$2,834.70
5	Balsam Fir Mixed Hardwood <i>Red Maple</i> Mixed Spruce <i>Black Spruce</i> Paper Birch Quaking Aspen Tamarack White Pine	Pulpwood	5 38 38 260 260 29 3 3 10	Cords Cords Cords Cords Cords Cords Cords Cords Cords	15.5	\$2,946.40
TOTAL:			2,080	Cords		

Sale Specific Conditions & Requirements

Sale Name: Move Along Mix

Sale Number: 45-112-23 Seq#: 3

1 - Sale Area

1.2 - Boundaries

1.2.1 - Painted Boundaries (9/19)

The sale boundary and Payment Unit boundaries are marked and identified by red and purple paint. Exterior sale boundary lines against state are marked with red paint. Interior Payment Unit boundaries are marked with purple paint. The painted boundary line trees are not Included Timber and are to be protected. Purple painted trees designating an interior Payment Unit boundary are only to be cut when all surrounding Payment Units have been paid.

2 - Timber Specifications

2.1 - Included Timber

2.1.1 - Clearcut Unit(s) with Unmerchantable Trees (6/14)

Within Payment Unit(s) 1, cut all trees that are two (2) inches or more at DBH except those marked with green paint. Within Payment Units 2-5, cut all deciduous trees that are two (2) inches or more at DBH and all conifer trees that are four (4) inches or more at DBH, EXCEPT do not cut any cedar trees and do not cut any white pine trees that are 14 inches or more at DBH.

2.1.11 - Description of Timber Note (2/04)

Note that Payment Units 3, 4, and 5 are optional to harvest due to access being difficult. Removing these Payment Units is a contract modification which requires a Timber Sale Contract Amendment.

2.2 - Utilization

2.2.9 - No Chipping Permitted (12/08)

Within Payment Unit(s) 1-5, all wood must be removed by whole tree, tree segment, or roundwood. No chipping is permitted.

3 - Payments

3.3 - Pre-measured Sales

3.3.4 - Dividing Payment Units (7/14)

Payment Unit(s) 2-5 may be divided at the request of the Purchaser and upon approval of the Unit Manager. Dividing Payment Units is a contract modification which requires a Timber Sale Contract Amendment. There will be only one division per Payment Unit.

4 - Transportation

4.1 - Construction

4.1.3 - Slash and Earthen Piles (8/04)

Piles or windrows of earth along roads and landings that have been widened or constructed shall be leveled. Slash from road maintenance or construction, including stumps, shall be dispersed throughout the sale.

4.1.6 - Road construction (1/09)

Construction of new roads or improvements of existing roads shall be done in such a way as to minimize the environmental and visual impacts. Merchantable trees shall be cut and utilized unless otherwise directed. Non-merchantable trees shall be severed and laid flat on the ground. Slash shall be scattered, and not left in windrows and kept a minimum of 10 feet back from the road edge. Stumps shall be set upright, not left on edge, and be moved at least 10 feet away from the road edge. Disturbed soil shall be feathered into the woods and not left in berms or windrows.

4.1.7 - Road Closure (10/11)

All new roads built into the sale must be blocked to vehicle traffic upon completion of the sale. Overgrown roads that are reopened shall be considered new roads. In general, this will require constructing a four (4') foot high berm of stumps and logs covered with earth. These roads must be rendered impassable to cars and trucks. Contact the Sale Administrator for specific details of design and placement.

4.2 - Maintenance

4.2.1 - Hauling Restriction (12/08)

Hauling is restricted on Hog Island Road. The restriction is a permanent weight restriction. Hauling will be restricted unless permission is granted from Mackinac County Road Commission.

4.2.3 - Road maintenance (8/13)

The following road maintenance may be needed: Within 60 days of completion of hauling, or if no hauling occurs for 60 days, the road must be maintained and graded. This includes cleaning of drainage areas, grading, crowning and filling with gravel, if necessary. Damages will be assessed if grading/repair does not occur.

4.2.5 - Two Wheel Drive Condition (2/04)

All existing trail roads on and adjacent to the Sale Area must be passable by two-wheel drive traffic for the duration of the sale.

5 - Operations

5.1 - Notification

5.1.6 - Utility R.O.W. (4/19)

It is the responsibility of the Purchaser to obtain permission from the utility company to utilize the power line and pipeline R.O.W. for operations. Contact Enbridge (pipeline) and American Transmission Company (power line).

5.2 - Conduct of Operations

5.2.2 - Hazard Trees/Snags

5.2.2.1 - Den Trees (10/16)

Obvious hollow and/or den trees shall be protected and left standing unless they are a safety hazard.

5.2.3 - Operating Restrictions

5.2.3.1 - Operating Restrictions (9/11)

Within Payment Unit(s) 1-5, unless changed by written agreement, cutting and skidding are limited to the period of December 1 to April 1. This restriction is because of sensitive soils and for winter deer browse.

5.2.17 - Timber Mats and Interlocking Composite Mats (5/23)

Some roads or skid trails require extra protection such as that afforded by interlocking composite mats or another approved system. Extra protection may be needed at locations shown on the Timber Sale Map. If available, mats may be borrowed from the DNR. A Timber Sale Contract Amendment will be used to document the Purchaser's use of the DNR's mats. Contact the Sale Administrator regarding availability and pick-up. Composite mats are only available from the Grayling field office and the Marquette ICC. The Purchaser is responsible for picking up and hauling the mats to and from the site. The composite mats will require DNR staff onsite for installation and removal. Contact the Sale Administrator to schedule at least 30 days before desired install/removal date. All mats must be cleaned prior to drop off. This may include, but is not limited to, power washing and brushing to remove mud and debris. A charge of \$2,000.00 per composite mat will be assessed for all damaged or non-returned mats. Damage for the composite mats is defined as cracked or broken mats.

5.2.32 - Decking/Landing Restoration (9/13)

All decking and landing areas must have the surface area restored to a condition equal to or better than before. This is to ensure the proper regeneration of the stand. Wood debris, chips and "cookies" from trimmings must be removed or scattered away from landing and loading areas and may not be windrowed on the edge.

5.2.38 - No Decking Against Live Trees (2/04)

Cut products may not be decked against unmarked or designated leave trees.

5.2.41 - Snowmobile Trail Protection (9/11)

Sand Lake Road (Trail # 473) is a snowmobile trail and is shown on the Timber Sale Map. Do not cut or damage posts with orange trail markers or traffic control signs. If the trail is used, it must be maintained and restored to a condition equal to or better than before the sale. The road maintenance/restoration must be done prior to December 1. If the trail is used for hauling, it must be graded to the satisfaction of the Unit Manager or his/her representative prior to December 1st. If the trail road is to be used for hauling during the snowmobile season, then a snow-covered base must be left on the trail. Maintain a

20-foot-wide slash, debris, and rut free zone daily using the snowmobile trail as the centerline. No decking of forest products will be permitted along the snowmobile trail.

5.8 - Protection of Endangered Species

5.8.5 - Protection of Raptor Nests (3/13)

All trees with raptor nests will be protected if found during harvesting operations. Notification will be made to the Unit Manager or his/her representative who will notify the Wildlife Biologist so an onsite evaluation and recommendation can be made, if necessary.

6 - Safety and Fire Prevention

6.2 - Signing

6.2.1 - Road Posting (10/20)

The Purchaser is responsible for posting and maintaining caution signs on Sand Lake Road and Hog Island Road (if used for hauling) prior to beginning operations. The road must be posted at appropriate distances from the Sale Area to warn of logging activity and truck traffic. Signs must be removed when harvest operations are suspended or completed. The Purchaser will provide these signs.

6.2.2 - Snowmobile Trail Posting (10/20)

The Purchaser is responsible for posting and maintaining caution signs on Sand Lake Road (Trail # 473) prior to beginning operations during the snowmobile season (approximately December 1 to March 31). The trail must be posted at appropriate distances from the Sale Area to warn of logging activity and truck traffic. Signs must be removed when harvest operations are suspended or completed. The Purchaser will provide these signs.



TIMBER SALE MAP

This information provided by authority of Part 525, 1994 PA 451, as amended.

Sale Number
45-112-23

Date
11/20/2023

Forest Management Unit	County	Mapped By: C. Flatt	Scale	Page	Of
Sault Ste Marie Mgt Unit	Mackinac	Cruised By: Naubinway DNR Staff	1:20,000	1	1

Township	Range	Section(s) and
43N	07W/08W	Subdivision(s) Sec. 25 SENE,SE; Sec. 30 SWNW,W1/2SW; Sec. 36 NE;

Cover Type

A = Aspen	J = Jack Pine	O = Oak	U = Upland Brush
B = Paper Birch	K = Rock	P = Lowland Poplar	UM = Upland Mix Forest
C = Cedar	L = Lowland Brush	Q = Mixed Swamp Conifer	V = Bog or Marsh
D = Treed Bog	LM = Lowland Mix Forest	R = Red Pine	W = White Pine
E = Swamp Hardwoods	M = Maple, Beech, Birch	S = Black Spruce	X = Non Stocked
F = Spruce/Fir	MC = Mixed Conifer	T = Tamarack	Y = Sand
G = Grass	MD = Mixed Deciduous	Z = Water	
H = Hemlock	N = Marsh		

Density

0 = Non Stocked	5 = Pole Timber Medium
1 = Seedling Sapling Poor	6 = Pole Timber Well
2 = Seedling Sapling Medium	7 = Saw Timber Poor
3 = Seedling Sapling Well	8 = Saw Timber Medium
4 = Pole Timber Poor	9 = Saw Timber Well

Locator Map (1:200,000)



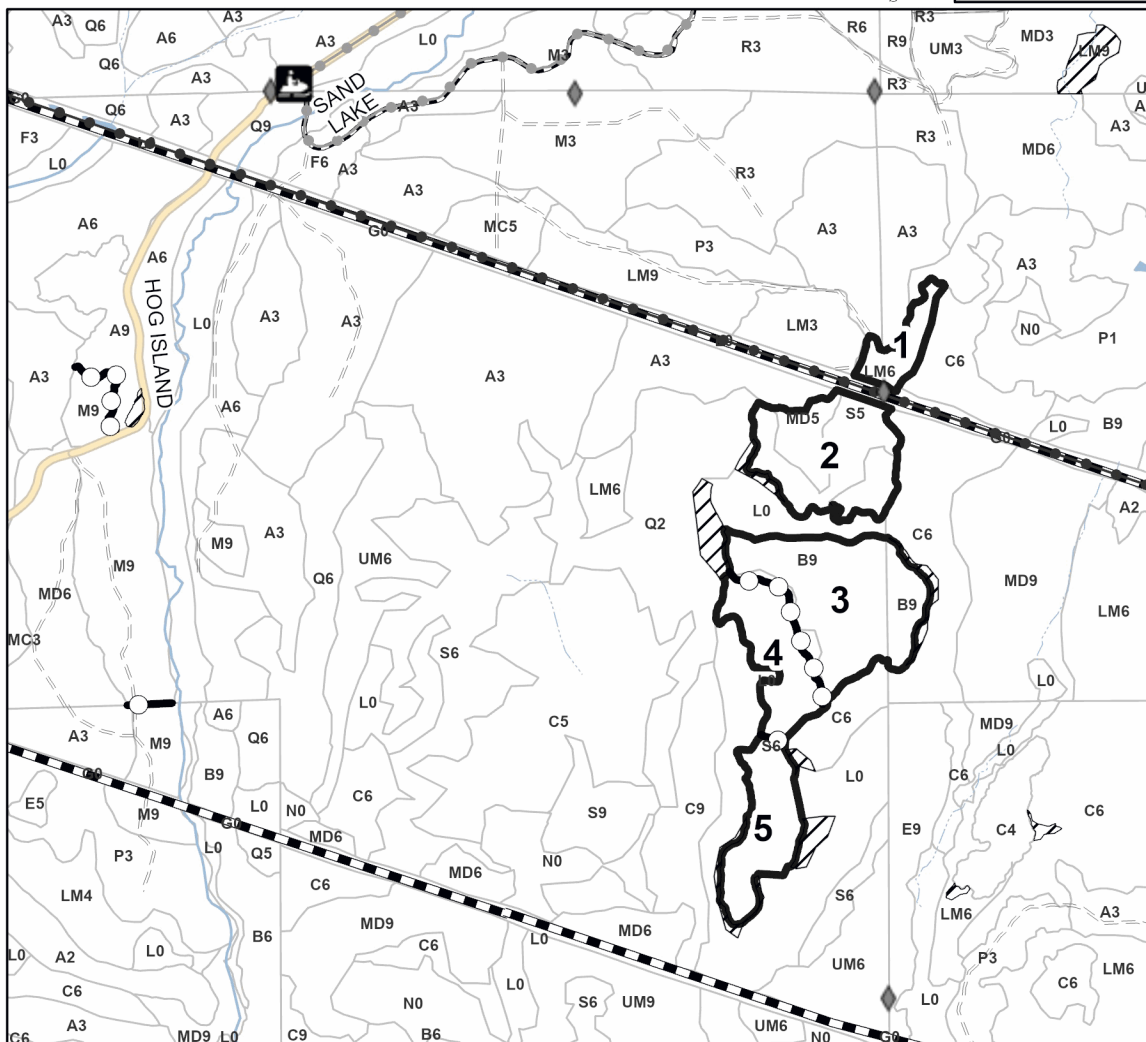
PU #	Acres
1	6
2	25.2
3	33.9
4	14.9
5	15.5

Move Along Mix

Compartment 140 & 144

95.5 Acres

0 0.3 0.6 1.2 Miles



Legend

- Against State (Red)
- Payment Unit (Purple)
- Stand
- Retention Areas
- Recreational Trail
- Primary Forest Road
- Forest Access Route
- Non-DNR Road
- Pipeline
- Powerline
- Snowmobile
- Field Grade Corner

Use QR Code to open Map in App



TIMBER SALE INFORMATION

Double Barrel Mix (45-114-23)

T43N, R08W, SEC. 23; T43N, R08W, SEC. 26; T43N, R08W, SEC. 27.
Mackinac County (Advertised Price \$12,511.15)

SALE NOTE: Payment Unit 3 is optional to harvest due to potential access issues. Removing this Payment Unit is a contract modification which requires a Timber Sale Contract Amendment. This sale has been reduced due to "no bid" on previous advertisement

A recreation site such as a trail, pathway, or campground is within the sale area or the vicinity. Certain restrictions/specifications may be applicable including time restrictions.

A timber sale contract for this lump sum, sealed bid timber sale will be awarded to the responsible bidder offering the highest sealed bid price. All units of volume listed below were estimated using the Inventory Manager computer program and the new Michigan taper model. Bids must be at or above the following advertised price for each product and species:

<u>PRODUCTS & SPECIES</u>	<u>ESTIMATED UNITS*</u>		<u>ADVERTISED PRICE</u>
Sawtimber			
Red Maple	3.8	MBF	\$ 84.00 / MBF
Pulpwood			
Balsam Fir	181	Cords	\$ 6.40 / Cord
Mixed Aspen	157	Cords	\$ 16.00 / Cord
Mixed Spruce	491	Cords	\$ 8.70 / Cord
N. White Cedar	150	Cords	\$ 2.20 / Cord
Paper Birch	252	Cords	\$ 3.45 / Cord
Red Maple	215	Cords	\$ 10.25 / Cord
Tamarack	20	Cords	\$ 1.45 / Cord
White Pine	74	Cords	\$ 11.05 / Cord

* The total volume is statistically estimated within plus (+) or minus (-) 28.12 percent. There are an estimated 1,548 cords on this timber sale, plus or minus 435 cords at the 95% confidence level. The estimated units are final and not subject to adjustment. Prospective bidders are urged to examine this timber and to make their own estimates of quantity and quality.

BOND AND PAYMENT SCHEDULE:

1. A bond in the amount of \$1,251.00 to insure faithful performance of the conditions of the contract will be deposited by the successful bidder within 21 days of the sale award.
2. Cutting in any sale or unit without the required advance payment would be considered a trespass.
3. Total payment must be paid in advance or according to the following schedule:
 - (a) Ten percent (10%) of the sale value must be paid within 21 days of the sale award.
 - (b) The 10% down payment will be credited towards the first unit cut.
 - (c) Payment for each of the following units must be made before cutting begins in that unit:

<u>PAYMENT UNIT NUMBER</u>	<u>PERCENT OF TOTAL SALE VALUE</u>
01	18.8%
02	7.1%
03	33.1%
04	41.0%

4. If no cutting takes place, the 10% down payment will not be refunded.
5. Operations on the contract issued will terminate on 06/30/2029.

SALE STATISTICS

Volumes were calculated in cubic feet using the Michigan taper model. Cubic foot volume includes all wood inside bark for the product indicated. For display purposes, cubic feet were converted to cords and MBF using a simple conversion factor, e.g. 79 cubic feet per cord and 185 cubic feet per MBF. The cubic foot volumes are precise; the cords and MBF volumes are not. Cubic foot volume cannot be directly converted to cords or boards with precision.

SALE VOLUMES

The total estimated sale volume may not equal the sum of the species/products due to the nature of statistical calculations associated with double sampling methodology.

VOLUME			STATISTICAL RANGE IN CORDS	
TOTAL CUBIC FEET	TOTAL CORDS	PERCENT ERROR	MINIMUM	MAXIMUM
122,271	1,548	28.12%	1,112	1,983

VDU VOLUMES

A VDU is a Volume Determination Unit. Volumes and their associated statistics are calculated at the VDU level and summarized to the sale level. There is often a one to one relationship between a VDU and a Payment Unit, but not always, depending on the cruise design. Refer to the VDU TO PAYMENT UNIT table.

	VOLUME			RANGE IN CORDS	
VDU	TOTAL CUBIC FEET	TOTAL CORDS	PERCENT ERROR	MINIMUM	MAXIMUM
6	48,561	615	23.41%	471	759
42	11,810	149	46.75%	80	219
58	41,786	529	26.51%	389	669
102	20,114	255	39.76%	153	356
TOTAL:	122,271	1,548		1,092	2,003

VDU TO PAYMENT UNIT

When a VDU is associated with more than one Payment Unit (PU), the VDU volumes are assigned to the PU based on acres of the VDU within the PU.

VDU	VDU ACRES	PU	PU ACRES
6	34.2	4	34.2
42	7.0	2	7.0
58	15.1	3	15.1
102	11.7	1	11.7
TOTAL:	68.0		68.0

DESCRIPTION OF TIMBER BY PAYMENT UNIT (PU)

PU	MARKET GROUP	PRODUCT	QUANTITY	UNIT	ACRES	ADVERTISE PRICE
1	Red Maple	Sawtimber	3.8	MBF	11.7	\$2,354.25
	Balsam Fir	Pulpwood	28	Cords		
	Mixed Aspen		25	Cords		
	B. T. Aspen		6	Cords		
	Quaking Aspen		19	Cords		
	Mixed Spruce		8	Cords		
	Black Spruce		5	Cords		
	White Spruce		3	Cords		
	Paper Birch		75	Cords		
	Red Maple		110	Cords		
2	Balsam Fir	Pulpwood	5	Cords	7.0	\$884.05
	Mixed Aspen		11	Cords		
	Quaking Aspen		11	Cords		
	Mixed Spruce		21	Cords		
	Black Spruce		18	Cords		
	White Spruce		3	Cords		
	N. White Cedar		64	Cords		
	Paper Birch		19	Cords		
	Red Maple		28	Cords		
	3	Balsam Fir	Pulpwood	136		
Mixed Aspen			105	Cords		
Quaking Aspen			105	Cords		
Mixed Spruce			50	Cords		
White Spruce			50	Cords		
N. White Cedar			86	Cords		
Paper Birch			89	Cords		
Red Maple			64	Cords		
4	Balsam Fir	Pulpwood	12	Cords	34.2	\$5,135.20
	Mixed Aspen		16	Cords		
	B. T. Aspen		11	Cords		
	Quaking Aspen		5	Cords		
	Mixed Spruce		412	Cords		
	Black Spruce		412	Cords		
	Paper Birch		69	Cords		
	Red Maple		13	Cords		
	Tamarack		20	Cords		
	White Pine		74	Cords		
	TOTAL:			3.8		
TOTAL:			1,540	Cords		

Sale Specific Conditions & Requirements

Sale Name: Double Barrel Mix

Sale Number: 45-114-23 Seq#: 3

1 - Sale Area

1.2 - Boundaries

1.2.1 - Painted Boundaries (9/19)

The sale boundary and Payment Unit boundaries are marked and identified by red paint. Exterior sale boundary lines against state are marked with red paint. The painted boundary line trees are not Included Timber and are to be protected.

2 - Timber Specifications

2.1 - Included Timber

2.1.1 - Clearcut Unit(s) with Unmerchantable Trees (6/14)

Within Payment Unit(s) 1-4, cut all deciduous trees that are two (2) inches or more at DBH and all coniferous trees that are four (4) inches or more at DBH. In addition, the following exceptions apply:

- Within Payment Unit 1, do not cut any cedar, hemlock, yellow birch, or white pine.
- Within Payment Unit 4, do not cut any cedar and do not cut any white pine over 14 inches at DBH.

2.1.11 - Description of Timber Note (2/04)

Note that Payment Unit 3 is optional to harvest due to potential access issues. Removing this Payment Unit is a contract modification which requires a Timber Sale Contract Amendment.

2.2 - Utilization

2.2.9 - No Chipping Permitted (12/08)

Within Payment Unit(s) 1-4, all wood must be removed by whole tree, tree segment, or roundwood. No chipping is permitted.

4 - Transportation

4.1 - Construction

4.1.3 - Slash and Earthen Piles (8/04)

Piles or windrows of earth along roads and landings that have been widened or constructed shall be leveled. Slash from road maintenance or construction, including stumps, shall be dispersed throughout the sale.

4.1.6 - Road construction (1/09)

Construction of new roads or improvements of existing roads shall be done in such a way as to minimize the environmental and visual impacts. Merchantable trees shall be cut and utilized unless otherwise directed. Non-merchantable trees shall be severed and laid flat on the ground. Slash shall be scattered, and not left in windrows and kept a minimum of 10 feet back from the road edge. Stumps shall be set upright, not left on edge, and be moved at least 10 feet away from the road edge. Disturbed soil shall be feathered into the woods and not left in berms or windrows.

4.1.7 - Road Closure (10/11)

All new roads built into the sale must be blocked to vehicle traffic upon completion of the sale. In general, this will require constructing a four (4') foot high berm of stumps and logs covered with earth. These roads must be rendered impassable to cars and trucks. Contact the Sale Administrator for specific details of design and placement.

4.2 - Maintenance

4.2.1 - Hauling Restriction (12/08)

Hauling is restricted on Hog Island Road. The restriction is a permanent weight restriction. Hauling will be restricted unless permission is granted from Mackinac County Road Commission.

4.2.3 - Road maintenance (8/13)

The following road maintenance may be needed: Within 60 days of completion of hauling, or if no hauling occurs for 60 days, the road must be maintained and graded. This includes cleaning of drainage areas, grading, crowning and filling with gravel, if necessary. Damages will be assessed if grading/repair does not occur.

4.2.5 - Two Wheel Drive Condition (2/04)

All existing trail roads on and adjacent to the Sale Area must be passable by two-wheel drive traffic for the duration of the sale.

5 - Operations

5.2 - Conduct of Operations

5.2.2 - Hazard Trees/Snags

5.2.2.1 - Den Trees (10/16)

Obvious hollow and/or den trees shall be protected and left standing unless they are a safety hazard.

5.2.3 - Operating Restrictions

5.2.3.1 - Operating Restrictions (9/11)

Within Payment Unit(s) 1-4, unless changed by written agreement, cutting and skidding are limited to the period of December 1 to April 15. This restriction is because of deer yard.

5.2.4 - Dead and Down Creation

5.2.4.6 - Dead and Down Creation, Other (9/09)

To improve habitat for wildlife, the Purchaser is to leave one brush pile on the ground for every two acres within Payment Unit 4. Piles must be at least 4 feet tall and scattered throughout the Sale Area. These piles can be created during normal harvesting procedures.

5.2.32 - Decking/Landing Restoration (9/13)

All decking and landing areas must have the surface area restored to a condition equal to or better than before. This is to ensure the proper regeneration of the stand. Wood debris, chips and "cookies" from trimmings must be removed or scattered away from landing and loading areas and may not be windrowed on the edge.

5.2.38 - No Decking Against Live Trees (2/04)

Cut products may not be decked against unmarked or designated leave trees.

5.2.41 - Snowmobile Trail Protection (9/11)

Sand Lake Road (Trail #473) is shown on the Timber Sale Map. Do not cut or damage posts with orange trail markers or traffic control signs. If the trail is used, it must be maintained and restored to a condition equal to or better than before the sale. The road maintenance/restoration must be done prior to December 1. If the trail is used for hauling, it must be graded to the satisfaction of the Unit Manager or his/her representative prior to December 1st. If the trail road is to be used for hauling during the snowmobile season, then a snow-covered base must be left on the trail. Maintain a 20-foot-wide slash, debris, and rut free zone daily using the snowmobile trail as the centerline. No decking of forest products will be permitted along the snowmobile trail.

5.8 - Protection of Endangered Species

5.8.5 - Protection of Raptor Nests (3/13)

All trees with raptor nests will be protected if found during harvesting operations. Notification will be made to the Unit Manager or his/her representative who will notify the Wildlife Biologist so an onsite evaluation and recommendation can be made, if necessary.

6 - Safety and Fire Prevention

6.2 - Signing

6.2.1 - Road Posting (10/20)

The Purchaser is responsible for posting and maintaining caution signs on roads used for harvesting operations and hauling prior to beginning operations. The road must be posted at appropriate distances from the Sale Area to warn of logging activity and truck traffic. Signs must be removed when harvest operations are suspended or completed. The Purchaser will provide these signs.

6.2.2 - Snowmobile Trail Posting (10/20)

The Purchaser is responsible for posting and maintaining caution signs on Sand Lake Road (Trail #473) prior to beginning operations during the snowmobile season (approximately December 1 to March 31). The trail must be posted at appropriate distances from the Sale Area to warn of logging activity and truck traffic. Signs must be removed when harvest operations are suspended or completed. The Purchaser will provide these signs.



TIMBER SALE MAP

This information provided by authority of Part 525, 1994 PA 451, as amended.

Sale Number

45-114-23

Date

11/20/2023

Forest Management Unit

Sault Ste Marie Mgt Unit

County

Mackinac

Mapped By: C. Flatt

Cruised By: DNR Staff

Scale

1:24,000

Page

1

Of

1

Township
43N

Range
08W

Section(s) and

Subdivision(s) Sec. 23 E1/2NE; Sec. 26 SWNW,NWSW; Sec. 27 NWNW,S1/2NW,NWNE,SENE;

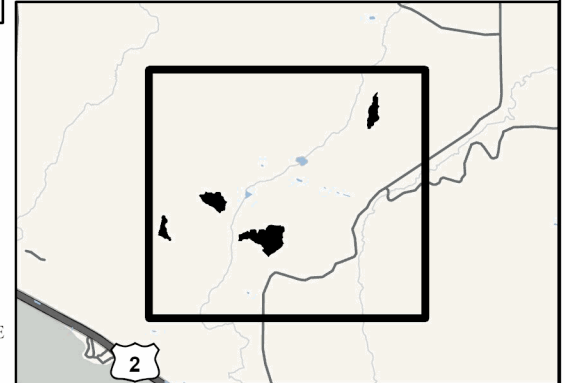
Cover Type

A = Aspen	J = Jack Pine	O = Oak	U = Upland Brush
B = Paper Birch	K = Rock	P = Lowland Poplar	UM = Upland Mix Forest
C = Cedar	L = Lowland Brush	Q = Mixed Swamp Conifer	V = Bog or Marsh
D = Treed Bog	LM = Lowland Mix Forest	R = Red Pine	W = White Pine
E = Swamp Hardwoods	M = Maple, Beech, Birch	S = Black Spruce	X = Non Stocked
F = Spruce/Fir	MC = Mixed Conifer	T = Tamarack	Y = Sand
G = Grass	MD = Mixed Deciduous	Z = Water	
H = Hemlock	N = Marsh		

Density

0 = Non Stocked	5 = Pole Timber Medium
1 = Seedling Sapling Poor	6 = Pole Timber Well
2 = Seedling Sapling Medium	7 = Saw Timber Poor
3 = Seedling Sapling Well	8 = Saw Timber Medium
4 = Pole Timber Poor	9 = Saw Timber Well

Locator Map (1:100,000)



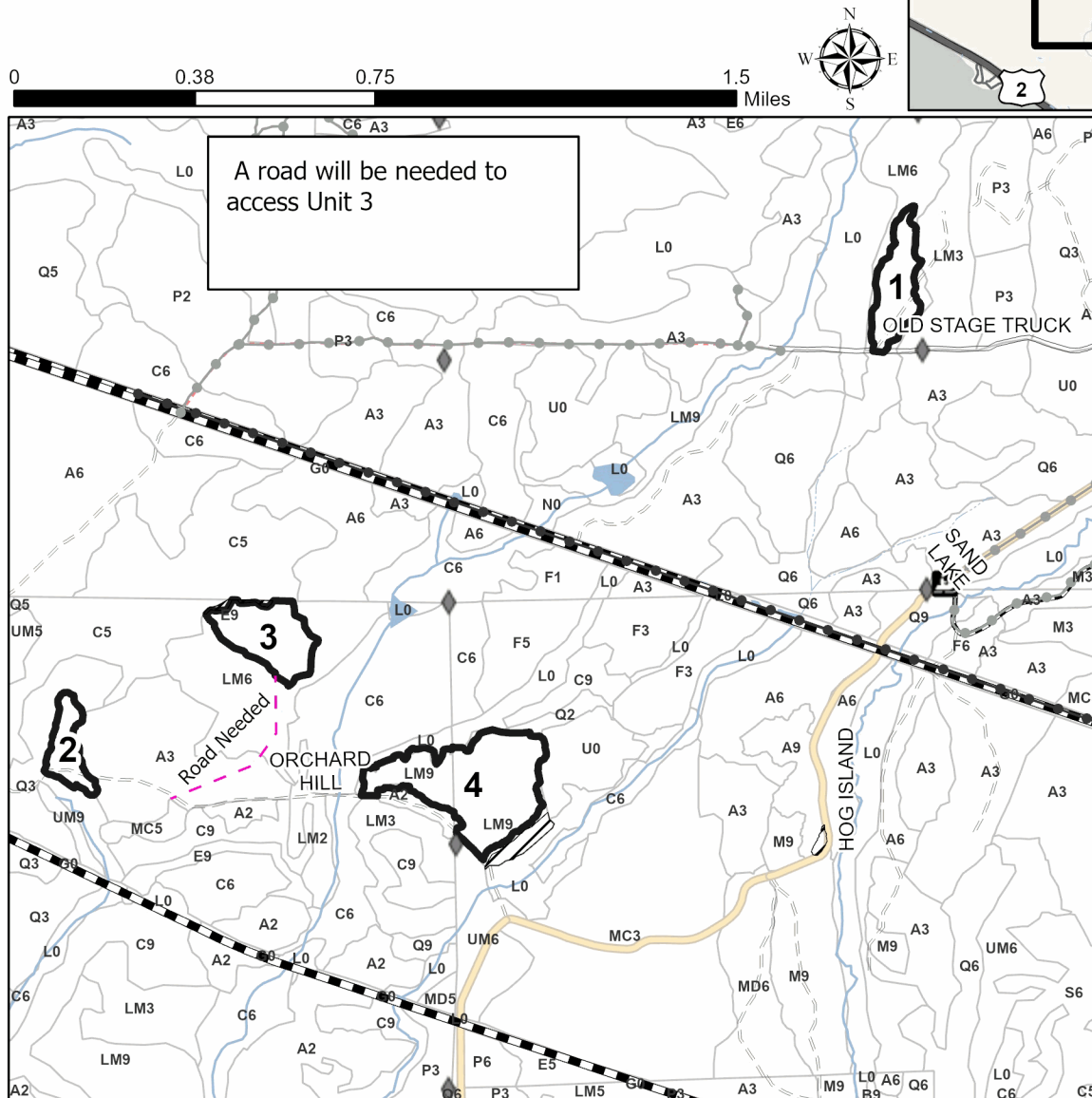
PU # Acres

1	11.7
2	7
3	15.1
4	34.2

Double Barrel Mix

Compartment(s) 144, 145, 161

68.0 Acres



Legend

- Against State (Red)
- Stand
- Retention Areas
- Recreational Trail
- Road Needed
- Primary Forest Road
- Secondary Forest Road
- Forest Access Route
- Administrative Access Only
- Non-DNR Road
- Pipeline
- Powerline
- Snowmobile
- Field Grade Corner

Use QR Code to open Map in App



TIMBER SALE INFORMATION

Birch Please (45-116-22)

T44N, R08W, SEC. 18; T44N, R08W, SEC. 6; T44N, R08W, SEC. 7.
Mackinac County (Advertised Price \$4,377.05)

SALE NOTE: Payment Unit 2 is optional to harvest due to its remoteness from Payment Unit 1. Removing this Payment Unit is a contract modification which requires a Timber Sale Contract Amendment. This sale has been reduced due to "no bid" on previous advertisement.

A recreation site such as a trail, pathway, or campground is within the sale area or the vicinity. Certain restrictions/specifications may be applicable including time restrictions.

A timber sale contract for this lump sum, sealed bid timber sale will be awarded to the responsible bidder offering the highest sealed bid price. All units of volume listed below were estimated using the Inventory Manager computer program and the new Michigan taper model. Bids must be at or above the following advertised price for each product and species:

<u>PRODUCTS & SPECIES</u>	<u>ESTIMATED UNITS*</u>		<u>ADVERTISED PRICE</u>
Sawtimber			
Paper Birch	7.5	MBF	\$ 20.00 / MBF
Red Maple	9.0	MBF	\$ 59.00 / MBF
Pulpwood			
Balsam Fir	99	Cords	\$ 4.45 / Cord
Hemlock	4	Cords	\$ 2.95 / Cord
Mixed Hardwood	215	Cords	\$ 7.20 / Cord
Mixed Spruce	119	Cords	\$ 6.10 / Cord
N. White Cedar	2	Cords	\$ 1.55 / Cord
Paper Birch	125	Cords	\$ 2.40 / Cord
Quaking Aspen	36	Cords	\$ 11.20 / Cord
White Pine	34	Cords	\$ 7.75 / Cord

* The total volume is statistically estimated within plus (+) or minus (-) 19.39 percent. There are an estimated 699 cords on this timber sale, plus or minus 136 cords at the 95% confidence level. The estimated units are final and not subject to adjustment. Prospective bidders are urged to examine this timber and to make their own estimates of quantity and quality.

BOND AND PAYMENT SCHEDULE:

1. A bond in the amount of \$438.00 to insure faithful performance of the conditions of the contract will be deposited by the successful bidder within 21 days of the sale award.
2. Cutting in any sale or unit without the required advance payment would be considered a trespass.
3. Total payment must be paid in advance or according to the following schedule :
 - (a) Ten percent (10%) of the sale value must be paid within 21 days of the sale award.
 - (b) The 10% down payment will be credited towards the first unit cut.
 - (c) Payment for each of the following units must be made before cutting begins in that unit:

<u>PAYMENT UNIT NUMBER</u>	<u>PERCENT OF TOTAL SALE VALUE</u>
01	86.1%
02	13.9%

4. If no cutting takes place, the 10% down payment will not be refunded.
5. Operations on the contract issued will terminate on 06/30/2029.

SALE STATISTICS

Volumes were calculated in cubic feet using the Michigan taper model. Cubic foot volume includes all wood inside bark for the product indicated. For display purposes, cubic feet were converted to cords and MBF using a simple conversion factor, e.g. 79 cubic feet per cord and 185 cubic feet per MBF. The cubic foot volumes are precise; the cords and MBF volumes are not. Cubic foot volume cannot be directly converted to cords or boards with precision.

SALE VOLUMES

The total estimated sale volume may not equal the sum of the species/products due to the nature of statistical calculations associated with double sampling methodology.

VOLUME			STATISTICAL RANGE IN CORDS	
TOTAL CUBIC FEET	TOTAL CORDS	PERCENT ERROR	MINIMUM	MAXIMUM
55,212	699	19.39%	563	834

VDU VOLUMES

A VDU is a Volume Determination Unit. Volumes and their associated statistics are calculated at the VDU level and summarized to the sale level. There is often a one to one relationship between a VDU and a Payment Unit, but not always, depending on the cruise design. Refer to the VDU TO PAYMENT UNIT table.

	VOLUME			RANGE IN CORDS	
VDU	TOTAL CUBIC FEET	TOTAL CORDS	PERCENT ERROR	MINIMUM	MAXIMUM
9	46,135	584	16.45%	488	680
21	9,077	115	120.78%	0	254
TOTAL:	55,212	699		488	934

VDU TO PAYMENT UNIT

When a VDU is associated with more than one Payment Unit (PU), the VDU volumes are assigned to the PU based on acres of the VDU within the PU.

VDU	VDU ACRES	PU	PU ACRES
9	27.1	1	27.1
21	3.5	2	3.5
TOTAL:	30.6		30.6

DESCRIPTION OF TIMBER BY PAYMENT UNIT (PU)

PU	MARKET GROUP	PRODUCT	QUANTITY	UNIT	ACRES	ADVERTISE PRICE
1	Paper Birch	Sawtimber	7.5	MBF	27.1	\$3,770.65
	Red Maple		9.0	MBF		
	Balsam Fir	Pulpwood	91	Cords		
	Mixed Hardwood		204	Cords		
	Black Ash		1	Cords		
	Red Maple		203	Cords		
	Mixed Spruce		99	Cords		
	Black Spruce		55	Cords		
	White Spruce		44	Cords		
	Paper Birch		87	Cords		
	Quaking Aspen		36	Cords		
2	Balsam Fir	Pulpwood	8	Cords	3.5	\$606.40
	Hemlock		4	Cords		
	Mixed Hardwood		11	Cords		
	Red Maple		11	Cords		
	Mixed Spruce		20	Cords		
	Black Spruce		20	Cords		
	N. White Cedar		2	Cords		
	Paper Birch		38	Cords		
	White Pine		34	Cords		
TOTAL:			16.5	MBF		
TOTAL:			634	Cords		

Sale Specific Conditions & Requirements

Sale Name: Birch Please

Sale Number: 45-116-22 Seq#: 4

1 - Sale Area

1.2 - Boundaries

1.2.1 - Painted Boundaries (9/19)

The painted boundary line trees are not Included Timber and are to be protected. Exterior sale boundary lines against state are marked with red paint. The sale boundary and Payment Unit boundaries are marked and identified by red paint.

2 - Timber Specifications

2.1 - Included Timber

2.1.1 - Clearcut Unit(s) with Unmerchantable Trees (6/14)

Within Payment Unit(s) 2, cut all deciduous trees that are two (2) inches or more at DBH and all conifers that four (4) inches or more at DBH.

2.1.7 - Leave Tree Marked Unit(s) (6/14)

Within Payment Unit(s) 1, cut all trees that are two (2) inches or more at DBH, except do not cut hemlock, cedar, white pine, and trees marked with green paint above and below stump height. Special protection trees identified in accordance with condition 3.4.2, within clearcutting unit boundaries, are not Included Timber and are to be protected.

2.1.11 - Description of Timber Note (2/04)

Note that Payment Unit 2 is optional to harvest due to its remoteness from Payment Unit 1. Removing this Payment Unit is a contract modification which requires a Timber Sale Contract Amendment.

3 - Payments

3.3 - Pre-measured Sales

3.3.4 - Dividing Payment Units (7/14)

Payment Unit(s) 1 may be divided at the request of the Purchaser and upon approval of the Unit Manager. Dividing Payment Units is a contract modification which requires a Timber Sale Contract Amendment. There will be only one division per Payment Unit.

3.4 - Damaged Timber

3.4.2 - Special Protection Trees (4/14)

The Purchaser shall not cut live or dead special protection trees within cutting units or clearings. Special protection trees are hemlock, white pine, cedar and any trees marked with green paint. This only applies to Payment Unit 1. If the Purchaser's operations have cut or damaged special protection trees through carelessness, the Purchaser shall pay \$20.00/cord as fixed, agreed and liquidated damages for each special protection tree cut or damaged. Such payment does not constitute ownership of the undesignated timber.

4 - Transportation

4.1 - Construction

4.1.3 - Slash and Earthen Piles (8/04)

Piles or windrows of earth along roads and landings that have been widened or constructed shall be leveled. Slash from road maintenance or construction, including stumps, shall be dispersed throughout the sale.

4.1.6 - Road construction (1/09)

Construction of new roads or improvements of existing roads shall be done in such a way as to minimize the environmental and visual impacts. Merchantable trees shall be cut and utilized unless otherwise directed. Non-merchantable trees shall be severed and laid flat on the ground. Slash shall be scattered, and not left in windrows and kept a minimum of 10 feet back from the road edge. Stumps shall be set upright, not left on edge, and be moved at least 10 feet away from the road edge. Disturbed soil shall be feathered into the woods and not left in berms or windrows.

4.2 - Maintenance

4.2.1 - Hauling Restriction (12/08)

Hauling is restricted on Dollar Lake Road. The restriction may occur during spring breakup. A road use permit is required from November 1 through April 30.

4.2.3 - Road maintenance (8/13)

The following road maintenance is required: Within 60 days of completion of hauling, or if no hauling occurs for 60 days, the road must be maintained and graded. This includes cleaning of drainage areas, grading, crowning and filling with gravel, if necessary. Damages will be assessed if grading/repair does not occur.

4.2.5 - Two Wheel Drive Condition (2/04)

All existing trail roads on and adjacent to the Sale Area must be passable by two-wheel drive traffic for the duration of the sale.

5 - Operations

5.2 - Conduct of Operations

5.2.1 - Slash

5.2.1.8 - Slash Height (12/08)

No slash or tree tops may exceed 24 inches in height.

5.2.2 - Hazard Trees/Snags

5.2.2.1 - Den Trees (10/16)

Obvious hollow and/or den trees shall be protected and left standing unless they are a safety hazard.

5.2.3 - Operating Restrictions

5.2.3.1 - Operating Restrictions (9/11)

Within Payment Unit(s) 1, unless changed by written agreement, cutting, skidding, and hauling are limited to the period of December 1 to March 31. This restriction is because of wet and sensitive soils.

5.2.17 - Timber Mats and Interlocking Composite Mats (10/20)

Some roads or skid trails may require extra protection such as that afforded by timber mats, interlocking composite mats, or another approved system. Approximately 75-100 feet of road or trail will need extra protection at locations shown on the Timber Sale Map. If available, mats may be borrowed from the DNR. A Timber Sale Contract Supplement will be used to document the Purchaser's use of the DNR's mats. Contact the sale administrator regarding availability and pick-up. Timber mats are available from various field offices. Composite mats are only available from the Grayling field office and the Marquette ICC. The Purchaser is responsible for picking up and hauling the mats to and from the site. The composite mats will require DNR staff onsite for installation and removal. Contact the sale administrator to schedule at least 30 days before desired install/removal date. All mats must be cleaned prior to drop off. This may include, but is not limited to, power washing and brushing to remove mud and debris. A charge of \$700.00 per timber mat and \$2,000.00 per composite mat will be assessed for all damaged or non-returned mats. Damage for the crane/timber mats is defined as three or more broken cants. Damage for the composite mats is defined as cracked or broken mats.

5.2.32 - Decking/Landing Restoration (9/13)

All decking and landing areas must have the surface area restored to a condition equal to or better than before. This is to ensure the proper regeneration of the stand. Wood debris, chips and "cookies" from trimmings must be removed or scattered away from landing and loading areas and may not be windrowed on the edge.

5.2.38 - No Decking Against Live Trees (2/04)

Cut products may not be decked against unmarked or designated leave trees.

5.2.39 - ORV Trail/Route Protection (4/18)

The AH Route is an ORV trail or route and is shown on the Timber Sale Map. Do not cut trees or damage posts with yellow ORV markers. All stumps within 5 feet of the trail must be cut flush with the ground. Maintain a 20 foot wide slash, debris, and rut free zone daily using the ORV trail or route as the centerline. Skidding across the trail or route may only occur in locations approved by the sale administrator.

5.2.41 - Snowmobile Trail Protection (9/11)

Trail 2 is a snowmobile trail and is shown on the Timber Sale Map. Do not cut or damage posts with orange trail markers or traffic control signs. If the trail is used, it must be maintained and restored to a condition equal to or better than before the sale. If the trail road is to be used for hauling during the snowmobile season, then a snow covered base must be left on the trail. The snowmobile trail may only be crossed at right angles. Maintain a 20 foot wide slash, debris, and rut free zone daily using the snowmobile trail as the centerline. No decking of forest products will be permitted along the snowmobile trail. All stumps within 20 feet of the snowmobile trail must be cut at ground level.

6 - Safety and Fire Prevention

6.2 - Signing

6.2.1 - Road Posting (10/20)

The Purchaser is responsible for posting and maintaining caution signs on Dollar Lake Road prior to beginning operations. The road must be posted at appropriate distances from the sale area to warn of logging activity and truck traffic. Signs must be removed when harvest operations are suspended or completed. The Purchaser will provide these signs.

6.2.2 - Snowmobile Trail Posting (10/20)

The Purchaser is responsible for posting and maintaining caution signs on Trail 2 prior to beginning operations during the snowmobile season (approximately December 1 to March 31). The trail must be posted at appropriate distances from the sale area to warn of logging activity and truck traffic. Signs must be removed when harvest operations are suspended or completed. The Purchaser will provide these signs.

6.2.3 - Recreational Trail Posting (10/20)

The Purchaser is responsible for posting and maintaining caution signs on AH Trail prior to beginning operations. The trail must be posted at appropriate distances from the sale area to warn of logging activity and truck traffic at both ends of the trail. Signs must be removed when harvest operations are suspended or completed. The Purchaser will provide these signs.

**TIMBER SALE MAP**

This information provided by authority of Part 525, 1994 PA 451, as amended.

Sale Number	Year
45-116	22

Forest Management Unit	County	Mapped By	Date	Page	of
Sault Ste Marie	Mackinac	Plato	09/26/2022	1	2
Township	Range	Section(s) and Subdivision(s)	Scale		
44N	08W	Sec. 6 SESW,SWSE, Sec. 7 NENW,W1/2NE, Sec. 18 N1/2SE	1:15,840		

Cover Type

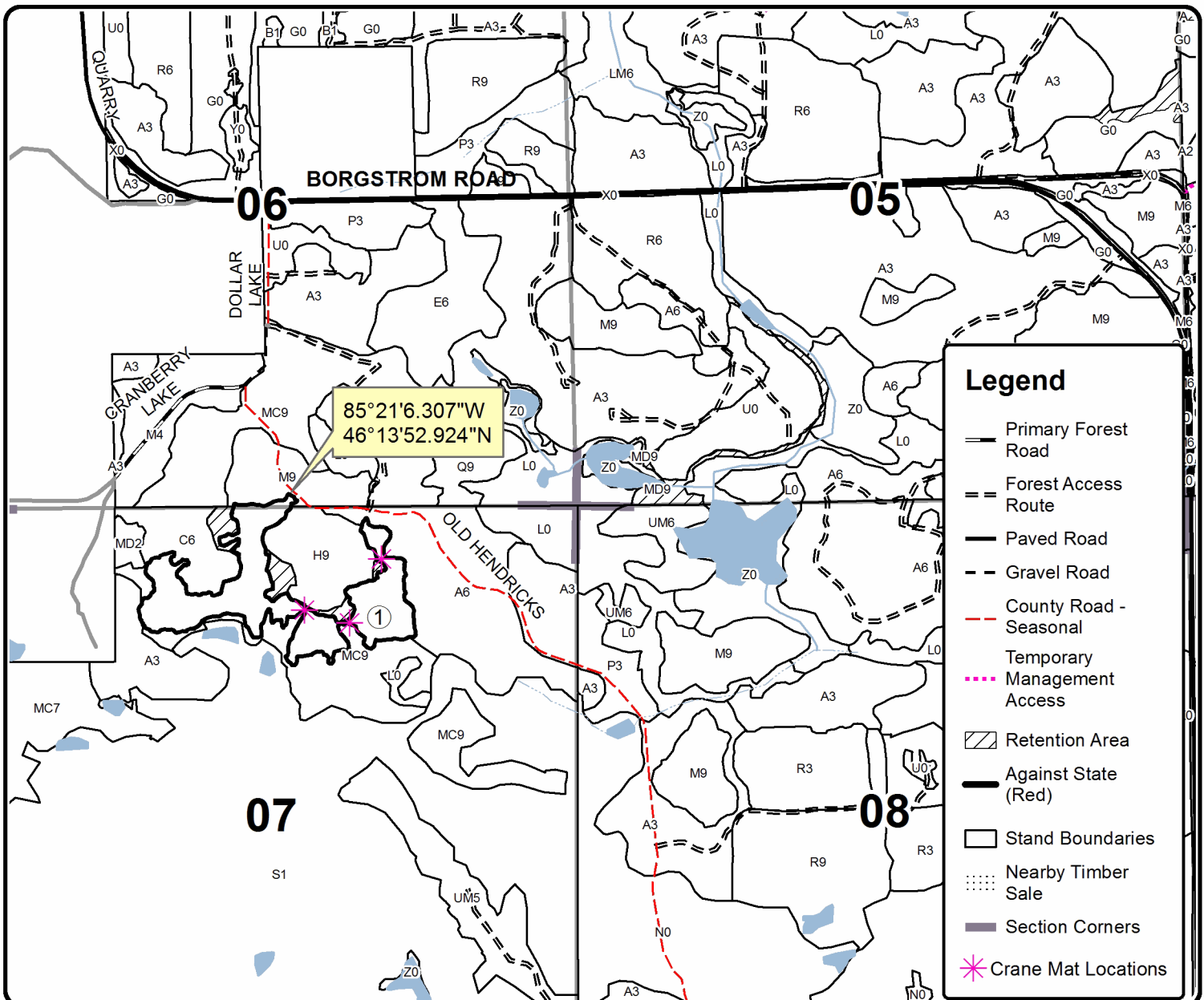
A = Aspen	H = Hemlock	N = Marsh	U = Upland Brush
B = Paper Birch	J = Jack Pine	O = Oak	UM = Upland Mixed
C = Cedar	L = Lowland Brush	P = Lowland Poplar	V = Bog or Marsh
D = Treed Bog	LM = Lowland Mixed	Q = Mixed Swamp Conifer	W = White Pine
E = Swamp Hdwoods	M = Mpl, Bch, Brch	R = Red Pine	X = Non Stocked
F = Spruce Fir	MC = Mixed Conifer	S = Black Spruce	Z = Water
G = Grass	MD = Mixed Deciduous	T = Tamarack	

Density

0 = Non Stocked	5 = Pole Timber Medium
1 = Seedling Sapling Poor	6 = Pole Timber Well
2 = Seedling Sapling Medium	7 = Saw Timber Poor
3 = Seedling Sapling Well	8 = Saw Timber Medium
4 = Pole Timber Poor	9 = Saw Timber Well

PU Acres

1	27.1
2	3.5

Birch Please
Compartment 166
30.6 Acres**Legend**

- Primary Forest Road
- Forest Access Route
- Paved Road
- Gravel Road
- County Road - Seasonal
- Temporary Management Access
- Retention Area
- Against State (Red)
- Stand Boundaries
- Nearby Timber Sale
- Section Corners
- Crane Mat Locations

0 0.125 0.25 0.5 0.75 1 Miles

**TIMBER SALE MAP**

This information provided by authority of Part 525, 1994 PA 451, as amended.

Sale Number	45-116	Year	22
Date	09/26/2022	Page	2
		of	2

Forest Management Unit	County	Mapped By	Plato	
Sault Ste Marie	Mackinac	Cruised By	Plato	
Township	Range	Section(s) and Subdivision(s)	Scale	
44N	08W	Sec. 6 SESW,SWSE, Sec. 7 NENW,W1/2NE, Sec. 18 N1/2SE	1:15,840	

Cover Type

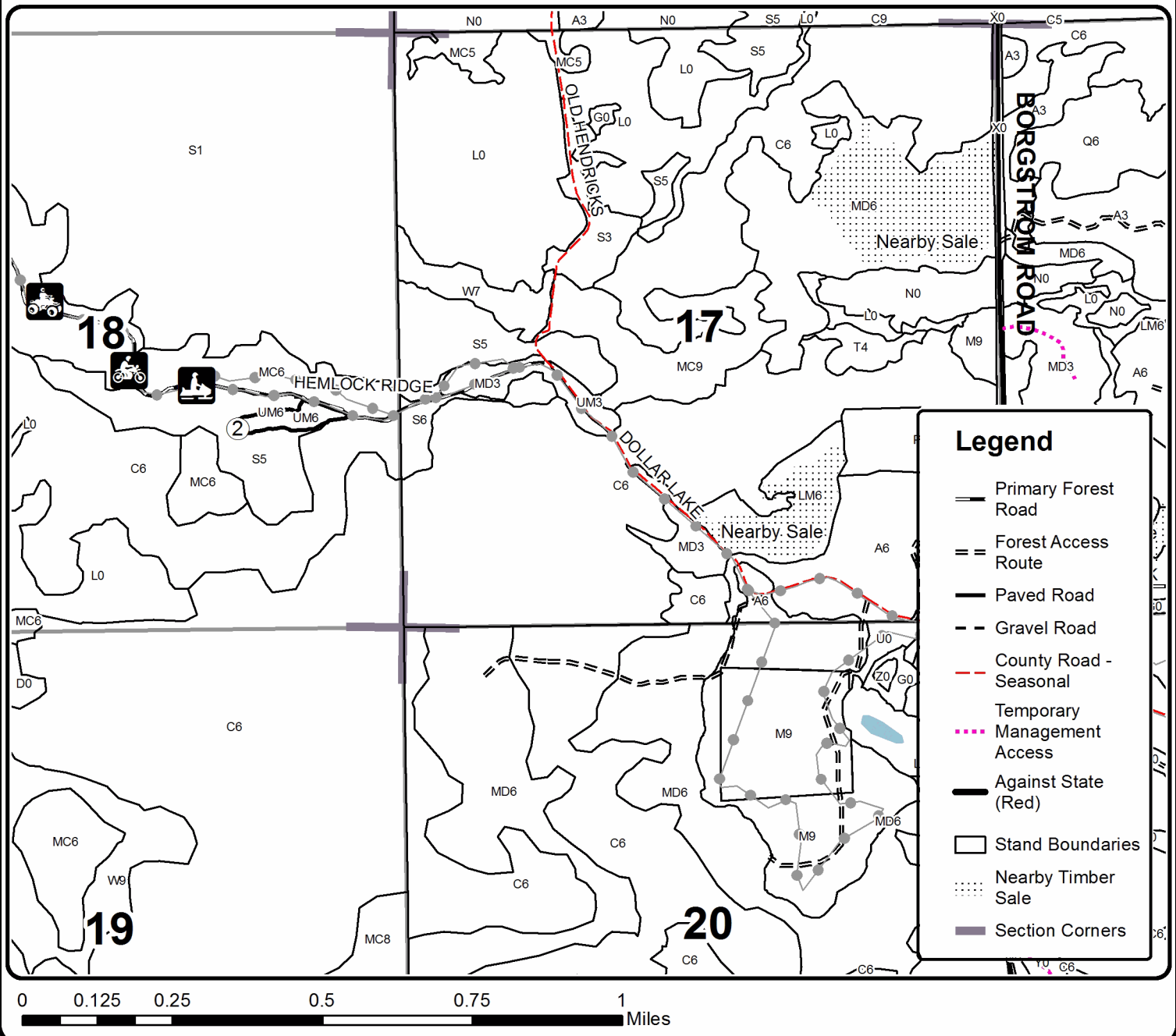
A = Aspen	H = Hemlock	N = Marsh	U = Upland Brush
B = Paper Birch	J = Jack Pine	O = Oak	UM = Upland Mixed
C = Cedar	L = Lowland Brush	P = Lowland Poplar	V = Bog or Marsh
D = Treed Bog	LM = Lowland Mixed	Q = Mixed Swamp Conifer	W = White Pine
E = Swamp Hdwoods	M = Mpl, Bch, Brch	R = Red Pine	X = Non Stocked
F = Spruce Fir	MC = Mixed Conifer	S = Black Spruce	Z = Water
G = Grass	MD = Mixed Deciduous	T = Tamarack	

Density

0 = Non Stocked	5 = Pole Timber Medium
1 = Seedling Sapling Poor	6 = Pole Timber Well
2 = Seedling Sapling Medium	7 = Saw Timber Poor
3 = Seedling Sapling Well	8 = Saw Timber Medium
4 = Pole Timber Poor	9 = Saw Timber Well

PU Acres

1	27.1
2	3.5

Birch Please
Compartment 166
30.6 Acres

Weather Station Pine (45-116-24)

T43N, R08W, SEC. 1; T43N, R08W, SEC. 2; T44N, R08W, SEC. 34; Mackinac

In response to the notice of sale to be held 3:00 p.m. (local time) on May 13, 2025, I am hereby submitting my sealed bid (firm offer) for the following forest products to be cut. Bids for individual species must be at or above the advertised price. All non-responsive bid forms may be rejected.

<u>PRODUCTS & SPECIES</u>	<u>ESTIMATED VOLUME*</u>	<u>ADVERTISED PRICE</u>	<u>BID PRICE/UNIT</u>
Pulpwood			
B. T. Aspen	24 Cords	\$ 24.00/Cord	\$ _____
Balsam Fir	50 Cords	\$ 9.55/Cord	\$ _____
Jack Pine	28 Cords	\$ 30.60/Cord	\$ _____
Misc. Species 2	31.5 Acres	\$ 15.00/Acres	\$ _____
Mixed Hardwood	243 Cords	\$ 15.40/Cord	\$ _____
Red Pine	4,956 Cords	\$ 86.95/Cord	\$ _____
White Spruce	38 Cords	\$ 13.10/Cord	\$ _____

*The volumes are statistically estimated within plus (+) or minus (-) 9.72 percent at 95% confidence level. These estimated volumes are final and not subject to adjustment. Prospective bidders are urged to examine this timber and to make their own estimates of quantity and quality.

I understand that any or all bids may be rejected. All bids must be signed and all bid items must be bid or the bid form may be rejected. I also understand that consideration and awarding a contract will be based upon my past performance and ability to complete the contract based upon equipment and staffing subject to my control .

FEDERAL ID: ____ - ____ - ____ or SOCIAL SECURITY NUMBER: ____ - ____ - ____
Company or individual bidding: _____
Company representative's name: _____
Address: _____
City: _____ State: _____ Zip: _____

IF AVAILABLE, PLEASE PLACE THE PERSONALIZED LABEL FROM YOUR PROSPECTUS IN THE ABOVE BOX.

Individual or company representative's signature: _____ Date: _____

Phone number : _____ Email (optional): _____

**THE WINNING BIDDER MUST COMPLETE THE VERIFICATION OF WORKER'S DISABILITY COMPENSATION ACT
COMPLIANCE (ON REVERSE SIDE IF DOUBLE SIDED) WITHIN 21 DAYS OF SALE AWARD DATE**



TIMBER SALE
VERIFICATION OF WORKER'S DISABILITY
COMPENSATION ACT COMPLIANCE

*As required by Act 317, P.A. 1969 (Worker's Compensation) and
Part 5 of Act 451 of 1994, as amended.*

FOR DEPARTMENT USE ONLY

Sale Number (XX – XXX – XX – XX)

Forest Management Unit:

VERIFICATION OF WORKER'S DISABILITY COMPENSATION ACT COMPLIANCE

- This verification must be completed and submitted within 21 days of contract award and prior to the issuance of the timber sale contract.
- In addition, if boxes 2B or 2C are checked, then Notice of Exclusion or Certificate of Insurance must be submitted within twenty-one (21) days of the contract award and prior to the issuance of the timber sale contract.
- All Information must be typed or printed except for written signatures.

Please Check Appropriate Categories:

1. My business is organized as (you **must** check one of the boxes below):
 - A. ☐ Sole Proprietorship (individual)
 - B. ☐ Partnership
 - C. ☐ Corporation
2. You **must** check one of the boxes below:
 - A. ☐ I certify my business is a sole proprietorship and it has no employees but the sole proprietor. I am not subject to the Worker's Compensation Laws.
 - B. ☐ I certify my business has satisfied its obligation to the Worker's Compensation Act through the use of an approved Notice of Exclusion (BWC-337, Rev. 5/96). I will provide a copy of the Notice of Exclusion within 21 days of the contract award. (For questions or a copy of the BWC-337, please call the Worker's Compensation Bureau at 517-322-1195).
 - C. ☐ I certify my business has a Worker's Compensation Policy. I will provide an original Certificate of Insurance within twenty-one (21) days of the contract award.
3. If you have checked item 2(A) or 2(B), you **must** indicate the number of **both** full-time and part-time employees, other than yourself, including family members and active partners (if none, you must enter "0").

_____ Full-time Employees

_____ Part-time Employees

Name of Business		Federal ID (or) Social Security No.
Address		Telephone ()
City	State	ZIP

I hereby certify that the above information is true and correct. I agree to notify the Michigan DNR of any changes that occur in factors affecting my coverage during any of my present and future operations.

Signature of Owner or Authorized Representative

Title

Date

Please complete the "SEALED BID" information on the next page

Weaving Weasel Mix (45-119-24)
T44N, R08W, SEC. 14; T44N, R08W, SEC. 23; Mackinac COUNTY

In response to the notice of sale to be held 3:00 p.m. (local time) on May 13, 2025, I am hereby submitting my sealed bid (firm offer) for the following forest products to be cut. Bids for individual species must be at or above the advertised price. All non-responsive bid forms may be rejected.

<u>PRODUCTS & SPECIES</u>	<u>ESTIMATED VOLUME*</u>	<u>ADVERTISED PRICE</u>	<u>BID PRICE/UNIT</u>
Sawtimber			
Black Cherry	3.1 MBF	\$ 98.00/MBF	\$ _____
Paper Birch	0.4 MBF	\$ 42.00/MBF	\$ _____
Red Maple	32.6 MBF	\$ 126.00/MBF	\$ _____
Sugar Maple	45.7 MBF	\$ 324.00/MBF	\$ _____
Pulpwood			
Balsam Fir	156 Cords	\$ 9.55/Cord	\$ _____
Jack Pine	16 Cords	\$ 30.60/Cord	\$ _____
Mixed Hardwood	733 Cords	\$ 15.40/Cord	\$ _____
Mixed Spruce	113 Cords	\$ 13.10/Cord	\$ _____
N. White Cedar	4 Cords	\$ 3.30/Cord	\$ _____
Paper Birch	61 Cords	\$ 5.15/Cord	\$ _____
Quaking Aspen	71 Cords	\$ 24.00/Cord	\$ _____
Red Pine	65 Cords	\$ 86.95/Cord	\$ _____
White Pine	29 Cords	\$ 16.60/Cord	\$ _____

*The volumes are statistically estimated within plus (+) or minus (-) 12.91 percent at 95% confidence level. These estimated volumes are final and not subject to adjustment. Prospective bidders are urged to examine this timber and to make their own estimates of quantity and quality.

I understand that any or all bids may be rejected. All bids must be signed and all bid items must be bid or the bid form may be rejected. I also understand that consideration and awarding a contract will be based upon my past performance and ability to complete the contract based upon equipment and staffing subject to my control .

FEDERAL ID: ____ - ____ - ____ or SOCIAL SECURITY NUMBER: ____ - ____ - ____

Company or individual bidding: _____

Company representative's name: _____

Address: _____

City: _____ State: _____ Zip: _____

IF AVAILABLE, PLEASE PLACE THE PERSONALIZED LABEL FROM YOUR PROSPECTUS IN THE ABOVE BOX.

Individual or company representative's signature: _____ Date: _____

Phone number : _____ Email (optional): _____

**THE WINNING BIDDER MUST COMPLETE THE VERIFICATION OF WORKER'S DISABILITY COMPENSATION ACT
COMPLIANCE (ON REVERSE SIDE IF DOUBLE SIDED) WITHIN 21 DAYS OF SALE AWARD DATE**



TIMBER SALE VERIFICATION OF WORKER'S DISABILITY COMPENSATION ACT COMPLIANCE

As required by Act 317, P.A. 1969 (Worker's Compensation) and
Part 5 of Act 451 of 1994, as amended.

FOR DEPARTMENT USE ONLY

Sale Number (XX - XXX - XX - XX)

Forest Management Unit:

VERIFICATION OF WORKER'S DISABILITY COMPENSATION ACT COMPLIANCE

- This verification must be completed and submitted within 21 days of contract award and prior to the issuance of the timber sale contract.
- In addition, if boxes 2B or 2C are checked, then Notice of Exclusion or Certificate of Insurance must be submitted within twenty-one (21) days of the contract award and prior to the issuance of the timber sale contract.
- All information must be typed or printed except for written signatures.

Please Check Appropriate Categories:

1. My business is organized as (you **must** check one of the boxes below):
 - A. ☐ Sole Proprietorship (individual)
 - B. ☐ Partnership
 - C. ☐ Corporation
2. You **must** check one of the boxes below:
 - A. ☐ I certify my business is a sole proprietorship and it has no employees but the sole proprietor. I am not subject to the Worker's Compensation Laws.
 - B. ☐ I certify my business has satisfied its obligation to the Worker's Compensation Act through the use of an approved Notice of Exclusion (BWC-337, Rev. 5/96). I will provide a copy of the Notice of Exclusion within 21 days of the contract award. (For questions or a copy of the BWC-337, please call the Worker's Compensation Bureau at 517-322-1195).
 - C. ☐ I certify my business has a Worker's Compensation Policy. I will provide an original Certificate of Insurance within twenty-one (21) days of the contract award.
3. If you have checked item 2(A) or 2(B), you **must** indicate the number of **both** full-time and part-time employees, other than yourself, including family members and active partners (if none, you must enter "0").

_____ Full-time Employees

_____ Part-time Employees

Name of Business		Federal ID (or) Social Security No.
Address		Telephone ()
City	State	ZIP

I hereby certify that the above information is true and correct. I agree to notify the Michigan DNR of any changes that occur in factors affecting my coverage during any of my present and future operations.

Signature of Owner or Authorized Representative

Title

Date

Please complete the "SEALED BID" information on the next page

Strouble's Hurried Hardwood (45-122-24)

T43N, R07W, SEC. 5; T43N, R07W, SEC. 6; T43N, R07W, SEC. 7; T43N, R07W,

In response to the notice of sale to be held 3:00 p.m. (local time) on May 13, 2025, I am hereby submitting my sealed bid (firm offer) for the following forest products to be cut. Bids for individual species must be at or above the advertised price. All non-responsive bid forms may be rejected.

<u>PRODUCTS & SPECIES</u>	<u>ESTIMATED VOLUME*</u>	<u>ADVERTISED PRICE</u>	<u>BID PRICE/UNIT</u>
Sawtimber			
Red Maple	26.1 MBF	\$ 126.00/MBF	\$ _____
Sugar Maple	204.1 MBF	\$ 324.00/MBF	\$ _____
Yellow Birch	7.4 MBF	\$ 58.00/MBF	\$ _____
Pulpwood			
Balsam Fir	93 Cords	\$ 9.55/Cord	\$ _____
Mixed Aspen	313 Cords	\$ 24.00/Cord	\$ _____
Mixed Hardwood	1,469 Cords	\$ 15.40/Cord	\$ _____
Mixed Spruce	33 Cords	\$ 13.10/Cord	\$ _____
N. White Cedar	163 Cords	\$ 3.30/Cord	\$ _____
Paper Birch	115 Cords	\$ 5.15/Cord	\$ _____
Tamarack	5 Cords	\$ 2.15/Cord	\$ _____
White Pine	9 Cords	\$ 16.60/Cord	\$ _____

*The volumes are statistically estimated within plus (+) or minus (-) 11.43 percent at 95% confidence level. These estimated volumes are final and not subject to adjustment. Prospective bidders are urged to examine this timber and to make their own estimates of quantity and quality.

I understand that any or all bids may be rejected. All bids must be signed and all bid items must be bid or the bid form may be rejected. I also understand that consideration and awarding a contract will be based upon my past performance and ability to complete the contract based upon equipment and staffing subject to my control .

FEDERAL ID: ____ - ____ - ____ or SOCIAL SECURITY NUMBER: ____ - ____ - ____

Company or individual bidding: _____

Company representative's name: _____

Address: _____

City: _____ State: _____ Zip: _____

IF AVAILABLE, PLEASE PLACE THE PERSONALIZED LABEL FROM YOUR PROSPECTUS IN THE ABOVE BOX.

Individual or company representative's signature: _____ Date: _____

Phone number : _____ Email (optional): _____

THE WINNING BIDDER MUST COMPLETE THE VERIFICATION OF WORKER'S DISABILITY COMPENSATION ACT COMPLIANCE (ON REVERSE SIDE IF DOUBLE SIDED) WITHIN 21 DAYS OF SALE AWARD DATE



TIMBER SALE VERIFICATION OF WORKER'S DISABILITY COMPENSATION ACT COMPLIANCE

As required by Act 317, P.A. 1969 (Worker's Compensation) and
Part 5 of Act 451 of 1994, as amended.

FOR DEPARTMENT USE ONLY

Sale Number (XX - XXX - XX - XX)

Forest Management Unit:

VERIFICATION OF WORKER'S DISABILITY COMPENSATION ACT COMPLIANCE

- This verification must be completed and submitted within 21 days of contract award and prior to the issuance of the timber sale contract.
- In addition, if boxes 2B or 2C are checked, then Notice of Exclusion or Certificate of Insurance must be submitted within twenty-one (21) days of the contract award and prior to the issuance of the timber sale contract.
- All Information must be typed or printed except for written signatures.

Please Check Appropriate Categories:

1. My business is organized as (you **must** check one of the boxes below):
 - A. ☐ Sole Proprietorship (individual)
 - B. ☐ Partnership
 - C. ☐ Corporation
2. You **must** check one of the boxes below:
 - A. ☐ I certify my business is a sole proprietorship and it has no employees but the sole proprietor. I am not subject to the Worker's Compensation Laws.
 - B. ☐ I certify my business has satisfied its obligation to the Worker's Compensation Act through the use of an approved Notice of Exclusion (BWC-337, Rev. 5/96). I will provide a copy of the Notice of Exclusion within 21 days of the contract award. (For questions or a copy of the BWC-337, please call the Worker's Compensation Bureau at 517-322-1195).
 - C. ☐ I certify my business has a Worker's Compensation Policy. I will provide an original Certificate of Insurance within twenty-one (21) days of the contract award.
3. If you have checked item 2(A) or 2(B), you **must** indicate the number of **both** full-time and part-time employees, other than yourself, including family members and active partners (if none, you must enter "0").

_____ Full-time Employees

_____ Part-time Employees

Name of Business		Federal ID (or) Social Security No.
Address		Telephone ()
City	State	ZIP

I hereby certify that the above information is true and correct. I agree to notify the Michigan DNR of any changes that occur in factors affecting my coverage during any of my present and future operations.

Signature of Owner or Authorized Representative

Title

Date

Please complete the "SEALED BID" information on the next page

Double Barrel Mix (45-114-23)

T43N, R08W, SEC. 23; T43N, R08W, SEC. 26; T43N, R08W, SEC. 27; Mackinac

In response to the notice of sale to be held 3:00 p.m. (local time) on May 13, 2025, I am hereby submitting my sealed bid (firm offer) for the following forest products to be cut. Bids for individual species must be at or above the advertised price. All non-responsive bid forms may be rejected.

<u>PRODUCTS & SPECIES</u>	<u>ESTIMATED VOLUME*</u>	<u>ADVERTISED PRICE</u>	<u>BID PRICE/UNIT</u>
Sawtimber			
Red Maple	3.8 MBF	\$ 84.00/MBF	\$ _____
Pulpwood			
Balsam Fir	181 Cords	\$ 6.40/Cord	\$ _____
Mixed Aspen	157 Cords	\$ 16.00/Cord	\$ _____
Mixed Spruce	491 Cords	\$ 8.70/Cord	\$ _____
N. White Cedar	150 Cords	\$ 2.20/Cord	\$ _____
Paper Birch	252 Cords	\$ 3.45/Cord	\$ _____
Red Maple	215 Cords	\$ 10.25/Cord	\$ _____
Tamarack	20 Cords	\$ 1.45/Cord	\$ _____
White Pine	74 Cords	\$ 11.05/Cord	\$ _____

*The volumes are statistically estimated within plus (+) or minus (-) 28.12 percent at 95% confidence level. These estimated volumes are final and not subject to adjustment. Prospective bidders are urged to examine this timber and to make their own estimates of quantity and quality.

I understand that any or all bids may be rejected. All bids must be signed and all bid items must be bid or the bid form may be rejected. I also understand that consideration and awarding a contract will be based upon my past performance and ability to complete the contract based upon equipment and staffing subject to my control .

FEDERAL ID: ____ - ____ - ____ or SOCIAL SECURITY NUMBER: ____ - ____ - ____

Company or individual bidding: _____

Company representative's name: _____

Address: _____

City: _____ State: _____ Zip: _____

IF AVAILABLE, PLEASE PLACE THE PERSONALIZED LABEL FROM YOUR PROSPECTUS IN THE ABOVE BOX.

Individual or company representative's signature: _____ Date: _____

Phone number : _____ Email (optional): _____

**THE WINNING BIDDER MUST COMPLETE THE VERIFICATION OF WORKER'S DISABILITY COMPENSATION ACT
COMPLIANCE (ON REVERSE SIDE IF DOUBLE SIDED) WITHIN 21 DAYS OF SALE AWARD DATE**



TIMBER SALE VERIFICATION OF WORKER'S DISABILITY COMPENSATION ACT COMPLIANCE

As required by Act 317, P.A. 1969 (Worker's Compensation) and
Part 5 of Act 451 of 1994, as amended.

FOR DEPARTMENT USE ONLY

Sale Number (XX - XXX - XX - XX)

Forest Management Unit:

VERIFICATION OF WORKER'S DISABILITY COMPENSATION ACT COMPLIANCE

- This verification must be completed and submitted within 21 days of contract award and prior to the issuance of the timber sale contract.
- In addition, if boxes 2B or 2C are checked, then Notice of Exclusion or Certificate of Insurance must be submitted within twenty-one (21) days of the contract award and prior to the issuance of the timber sale contract.
- All information must be typed or printed except for written signatures.

Please Check Appropriate Categories:

1. My business is organized as (you **must** check one of the boxes below):
 - A. ☐ Sole Proprietorship (individual)
 - B. ☐ Partnership
 - C. ☐ Corporation
2. You **must** check one of the boxes below:
 - A. ☐ I certify my business is a sole proprietorship and it has no employees but the sole proprietor. I am not subject to the Worker's Compensation Laws.
 - B. ☐ I certify my business has satisfied its obligation to the Worker's Compensation Act through the use of an approved Notice of Exclusion (BWC-337, Rev. 5/96). I will provide a copy of the Notice of Exclusion within 21 days of the contract award. (For questions or a copy of the BWC-337, please call the Worker's Compensation Bureau at 517-322-1195).
 - C. ☐ I certify my business has a Worker's Compensation Policy. I will provide an original Certificate of Insurance within twenty-one (21) days of the contract award.
3. If you have checked item 2(A) or 2(B), you **must** indicate the number of **both** full-time and part-time employees, other than yourself, including family members and active partners (if none, you must enter "0").

_____ Full-time Employees

_____ Part-time Employees

Name of Business		Federal ID (or) Social Security No.
Address		Telephone ()
City	State	ZIP

I hereby certify that the above information is true and correct. I agree to notify the Michigan DNR of any changes that occur in factors affecting my coverage during any of my present and future operations.

Signature of Owner or Authorized Representative

Title

Date

Please complete the "SEALED BID" information on the next page

Birch Please (45-116-22)

T44N, R08W, SEC. 18; T44N, R08W, SEC. 6; T44N, R08W, SEC. 7; Mackinac

In response to the notice of sale to be held 3:00 p.m. (local time) on May 13, 2025, I am hereby submitting my sealed bid (firm offer) for the following forest products to be cut. Bids for individual species must be at or above the advertised price. All non-responsive bid forms may be rejected.

<u>PRODUCTS & SPECIES</u>	<u>ESTIMATED VOLUME*</u>	<u>ADVERTISED PRICE</u>	<u>BID PRICE/UNIT</u>
Sawtimber			
Paper Birch	7.5 MBF	\$ 20.00/MBF	\$ _____
Red Maple	9.0 MBF	\$ 59.00/MBF	\$ _____
Pulpwood			
Balsam Fir	99 Cords	\$ 4.45/Cord	\$ _____
Hemlock	4 Cords	\$ 2.95/Cord	\$ _____
Mixed Hardwood	215 Cords	\$ 7.20/Cord	\$ _____
Mixed Spruce	119 Cords	\$ 6.10/Cord	\$ _____
N. White Cedar	2 Cords	\$ 1.55/Cord	\$ _____
Paper Birch	125 Cords	\$ 2.40/Cord	\$ _____
Quaking Aspen	36 Cords	\$ 11.20/Cord	\$ _____
White Pine	34 Cords	\$ 7.75/Cord	\$ _____

*The volumes are statistically estimated within plus (+) or minus (-) 19.39 percent at 95% confidence level. These estimated volumes are final and not subject to adjustment. Prospective bidders are urged to examine this timber and to make their own estimates of quantity and quality.

I understand that any or all bids may be rejected. All bids must be signed and all bid items must be bid or the bid form may be rejected. I also understand that consideration and awarding a contract will be based upon my past performance and ability to complete the contract based upon equipment and staffing subject to my control .

FEDERAL ID: ____ - ____ - ____ or SOCIAL SECURITY NUMBER: ____ - ____ - ____

Company or individual bidding: _____

Company representative's name: _____

Address: _____

City: _____ State: _____ Zip: _____

IF AVAILABLE, PLEASE PLACE THE PERSONALIZED LABEL FROM YOUR PROSPECTUS IN THE ABOVE BOX.

Individual or company representative's signature: _____ Date: _____

Phone number : _____ Email (optional): _____

**THE WINNING BIDDER MUST COMPLETE THE VERIFICATION OF WORKER'S DISABILITY COMPENSATION ACT
COMPLIANCE (ON REVERSE SIDE IF DOUBLE SIDED) WITHIN 21 DAYS OF SALE AWARD DATE**



TIMBER SALE VERIFICATION OF WORKER'S DISABILITY COMPENSATION ACT COMPLIANCE

As required by Act 317, P.A. 1969 (Worker's Compensation) and
Part 5 of Act 451 of 1994, as amended.

FOR DEPARTMENT USE ONLY

Sale Number (XX - XXX - XX - XX)

Forest Management Unit:

VERIFICATION OF WORKER'S DISABILITY COMPENSATION ACT COMPLIANCE

- This verification must be completed and submitted within 21 days of contract award and prior to the issuance of the timber sale contract.
- In addition, if boxes 2B or 2C are checked, then Notice of Exclusion or Certificate of Insurance must be submitted within twenty-one (21) days of the contract award and prior to the issuance of the timber sale contract.
- All information must be typed or printed except for written signatures.

Please Check Appropriate Categories:

1. My business is organized as (you **must** check one of the boxes below):
 - A. ☐ Sole Proprietorship (individual)
 - B. ☐ Partnership
 - C. ☐ Corporation
2. You **must** check one of the boxes below:
 - A. ☐ I certify my business is a sole proprietorship and it has no employees but the sole proprietor. I am not subject to the Worker's Compensation Laws.
 - B. ☐ I certify my business has satisfied its obligation to the Worker's Compensation Act through the use of an approved Notice of Exclusion (BWC-337, Rev. 5/96). I will provide a copy of the Notice of Exclusion within 21 days of the contract award. (For questions or a copy of the BWC-337, please call the Worker's Compensation Bureau at 517-322-1195).
 - C. ☐ I certify my business has a Worker's Compensation Policy. I will provide an original Certificate of Insurance within twenty-one (21) days of the contract award.
3. If you have checked item 2(A) or 2(B), you **must** indicate the number of **both** full-time and part-time employees, other than yourself, including family members and active partners (if none, you must enter "0").

_____ Full-time Employees

_____ Part-time Employees

Name of Business		Federal ID (or) Social Security No.
Address		Telephone ()
City	State	ZIP

I hereby certify that the above information is true and correct. I agree to notify the Michigan DNR of any changes that occur in factors affecting my coverage during any of my present and future operations.

Signature of Owner or Authorized Representative

Title

Date

Please complete the "SEALED BID" information on the next page

Move Along Mix (45-112-23)

T43N, R07W, SEC. 30; T43N, R08W, SEC. 25; T43N, R08W, SEC. 36; Mackinac

In response to the notice of sale to be held 3:00 p.m. (local time) on May 13, 2025, I am hereby submitting my sealed bid (firm offer) for the following forest products to be cut. Bids for individual species must be at or above the advertised price. All non-responsive bid forms may be rejected.

<u>PRODUCTS & SPECIES</u>	<u>ESTIMATED VOLUME*</u>	<u>ADVERTISED PRICE</u>	<u>BID PRICE/UNIT</u>
Pulpwood			
Balsam Fir	210 Cords	\$ 6.40/Cord	\$ _____
Mixed Hardwood	395 Cords	\$ 10.25/Cord	\$ _____
Mixed Spruce	969 Cords	\$ 8.70/Cord	\$ _____
N. White Cedar	44 Cords	\$ 2.20/Cord	\$ _____
Paper Birch	297 Cords	\$ 3.45/Cord	\$ _____
Quaking Aspen	11 Cords	\$ 16.00/Cord	\$ _____
Tamarack	17 Cords	\$ 1.45/Cord	\$ _____
White Pine	137 Cords	\$ 11.05/Cord	\$ _____

*The volumes are statistically estimated within plus (+) or minus (-) 23.67 percent at 95% confidence level. These estimated volumes are final and not subject to adjustment. Prospective bidders are urged to examine this timber and to make their own estimates of quantity and quality.

I understand that any or all bids may be rejected. All bids must be signed and all bid items must be bid or the bid form may be rejected. I also understand that consideration and awarding a contract will be based upon my past performance and ability to complete the contract based upon equipment and staffing subject to my control .

FEDERAL ID: ____ - ____ - ____ or SOCIAL SECURITY NUMBER: ____ - ____ - ____

Company or individual bidding: _____

Company representative's name: _____

Address: _____

City: _____ State: _____ Zip: _____

IF AVAILABLE, PLEASE PLACE THE PERSONALIZED LABEL FROM YOUR PROSPECTUS IN THE ABOVE BOX.

Individual or company representative's signature: _____ Date: _____

Phone number : _____ Email (optional): _____

**THE WINNING BIDDER MUST COMPLETE THE VERIFICATION OF WORKER'S DISABILITY COMPENSATION ACT
COMPLIANCE (ON REVERSE SIDE IF DOUBLE SIDED) WITHIN 21 DAYS OF SALE AWARD DATE**



TIMBER SALE VERIFICATION OF WORKER'S DISABILITY COMPENSATION ACT COMPLIANCE

As required by Act 317, P.A. 1969 (Worker's Compensation) and
Part 5 of Act 451 of 1994, as amended.

FOR DEPARTMENT USE ONLY

Sale Number (XX - XXX - XX - XX)

Forest Management Unit:

VERIFICATION OF WORKER'S DISABILITY COMPENSATION ACT COMPLIANCE

- This verification must be completed and submitted within 21 days of contract award and prior to the issuance of the timber sale contract.
- In addition, if boxes 2B or 2C are checked, then Notice of Exclusion or Certificate of Insurance must be submitted within twenty-one (21) days of the contract award and prior to the issuance of the timber sale contract.
- All Information must be typed or printed except for written signatures.

Please Check Appropriate Categories:

1. My business is organized as (you **must** check one of the boxes below):
 - A. ☐ Sole Proprietorship (individual)
 - B. ☐ Partnership
 - C. ☐ Corporation
2. You **must** check one of the boxes below:
 - A. ☐ I certify my business is a sole proprietorship and it has no employees but the sole proprietor. I am not subject to the Worker's Compensation Laws.
 - B. ☐ I certify my business has satisfied its obligation to the Worker's Compensation Act through the use of an approved Notice of Exclusion (BWC-337, Rev. 5/96). I will provide a copy of the Notice of Exclusion within 21 days of the contract award. (For questions or a copy of the BWC-337, please call the Worker's Compensation Bureau at 517-322-1195).
 - C. ☐ I certify my business has a Worker's Compensation Policy. I will provide an original Certificate of Insurance within twenty-one (21) days of the contract award.
3. If you have checked item 2(A) or 2(B), you **must** indicate the number of **both** full-time and part-time employees, other than yourself, including family members and active partners (if none, you must enter "0").

_____ Full-time Employees

_____ Part-time Employees

Name of Business		Federal ID (or) Social Security No.
Address		Telephone ()
City	State	ZIP

I hereby certify that the above information is true and correct. I agree to notify the Michigan DNR of any changes that occur in factors affecting my coverage during any of my present and future operations.

Signature of Owner or Authorized Representative

Title

Date

Please complete the "SEALED BID" information on the next page