



**DEPARTMENT OF NATURAL RESOURCES
STATE OF MICHIGAN
TIMBER SALE PROSPECTUS #7590**

SCHEDULED SALE DATE AND TIME: 3:00 p.m. (local time) on August 19, 2025.

LOCATION: NAUBINWAY DNR FIELD OFFICE, PO BOX 287, W11569 US2, NAUBINWAY, MI 49762.

PROSPECTUS NOTE: The bidder is advised to inspect the sale area and review the location, estimated volumes, operating costs and contract terms of proposed sales. Please be aware that some landowners may request 60 days or more notice for access across their land.

Notice is hereby given that bids will be received by the Unit Manager, SAULT STE MARIE MANAGEMENT UNIT, for certain timber on the following described lands:

Batty Doe Cedar Cut CRP (45-102-25) / T42N, R12W, SEC. 26, E1/2NW,W1/2NE.

Mackinac County, Advertised Price \$158.00, 15.8 Acres, Hardwood.

SALE NOTE: This sale is part of a Michigan Technological University silvicultural study for cedar regeneration . This sale is being sold by the acre. The purchaser is required to report total volumes harvested by species in cords. Upon completion of harvesting the purchaser will be eligible for a free/reduced extension on another Michigan DNR timber sale.

Hog Island Cedar Cut CRP (45-103-25) / T43N, R07W, SEC. 7 , S1/2NW,S1/2NE,N1/2SW,N1/2SE.

Mackinac County, Advertised Price \$142.00, 14.2 Acres, Hardwood.

SALE NOTE: This sale is part of a Michigan Technological University silvicultural study for cedar regeneration . This sale is being sold by the acre. The purchaser is required to report total volumes harvested by species in cords. Upon completion of harvesting the purchaser will be eligible for a free/reduced extension on another Michigan DNR timber sale.

A recreation site such as a trail, pathway, or campground is within the sale area or the vicinity. Certain restrictions/specifications may be applicable including time restrictions.

Green Maple Mix (45-123-24) / T42N, R12W, SEC. 28, SW.

T42N, R12W, SEC. 33, N1/2NW.

T42N, R12W, SEC. 34, N1/2NE.

Mackinac County, Advertised Price \$123,846.70, 119.1 Acres, Hardwood, Sugar Maple.

BID INSTRUCTIONS (VER. 10/10/2022):

1. Scheduled Bid Location, Date, and Time (2/11)

Bids must be received by the Unit Manager, NAUBINWAY DNR FIELD OFFICE, PO Box 287 W11569 US2, Naubinway, MI 49762, no later than 3:00 p.m. (local time) on August 19, 2025. For further information concerning this sale, contact Josh Brinks at 906-203-0210 extension .

2. Bidder's Qualifications (10/22)

If all or part of a timber sale was prepared by a private contractor, the contractor and that contractor's company are not permitted to bid on the timber sale. A person must be 18 years of age or older to purchase timber. Permanent employees of the Department of Natural Resources or members of their immediate household may not bid. Former employees, in the permanent or seasonal class, may not bid until 3 months after the last day of active duty. Bids will not be accepted from individuals or companies appearing on the DNR/FRD No-Bid List. This list contains the names of purchasers who previously failed to execute a contract within 21-days or who have a history of poor performance.

3. Preparation of Sealed Bids (5/16)

Bid Forms may be completed online thru Michigan DNR Timber Sale Online Bidding (OLB) at www.michigan.gov/timberbidding or by completing the hardcopy Bid Form found in the Timber Sale Prospectus . Hardcopy Bid Forms shall be manually signed in ink. Registration in OLB is considered your 'signature' for all bids submitted thru that system. Bid prices must be entered for each species and product in the Bid Price column for all material subject to bidding and all fill-in blanks must be completed. If erasures or other changes appear on the hardcopy Bid Form, each erasure or change must be initialed by the person signing the bid.

4. Submission of Sealed Bids (5/16)

Bid forms may be obtained from the Unit Manager or thru OLB. Bids may be submitted hardcopy or thru OLB. All hardcopy bids must be submitted on the bid form and in an envelope clearly identified as described in this section. NOTE: Only one bid form per bid envelope. Sealed bids must be submitted to the Unit office designated in the prospectus and must be submitted at or prior to the time established in the prospectus. The envelope should show on the outside (a) the sale name or number and (b) the date and time of bid opening, as shown in the prospectus. Bids received after the time specified in the sale prospectus are late bids and will be rejected.

It is possible for a bidder to submit multiple bids on a single sale. For example, a bid may be submitted hardcopy and a bid may be submitted thru OLB. Or, two bidders from the same company could both submit bids on the same sale. If this were to happen, the State would accept all bids received and award the contract accordingly. All bidding and contractual requirements would apply to all bids received.

5. Public Opening of Sealed Bids (7/16)

If conditions permit, the sealed bids will be publicly opened and posted at the time and place set in the prospectus.

If a bidder, present at a bid opening, has submitted bids on more than one sale, that bidder may withdraw their unopened bid envelopes or announce the withdrawal of their online bid after being declared the successful bidder on one sale.

6. Award of Contract (1/11)

Award of the contract will be made to the Bidder whose bid, conforming to the prospectus, is most advantageous to the State of Michigan on the basis of total value at rates bid for the estimated quantities. The State reserves the right to reject any bid or waive any minor irregularity in bids received. A written award mailed (or otherwise furnished) to the successful Bidder shall be deemed to result in a binding contract without further action by either party.

7. Down Payment (1/11)

The Bidder to whom award is made must make a down payment within 21 days of the sale award. The amount of the down payment will be calculated as shown in the Bond and Payment Schedule of this prospectus. Only cash may be used to meet this requirement.

8. Performance Security (1/11)

As guarantee of faithful performance, a cash bond, certificate of deposit, surety bond or irrevocable letter of credit (LOC) is required within 21 days of the sale award. The amount of the performance security is shown in the Bond and

Payment Schedule of this prospectus. If an LOC or surety is used, the coverage must extend for at least 6 months beyond the contract expiration.

9. Worker's Compensation (10/22)

Purchaser shall obtain worker's compensation insurance to cover claims under Michigan's Worker's Disability Compensation Act of 1969 or similar employee benefit act of any other state applicable to an employee. Verification of Worker's Disability Compensation Act Compliance must be completed and submitted within 21 days of contract award and prior to the issuance of the timber sale contract. In addition, if applicable, Notice of Exclusion or Certificate of Insurance must also be submitted.

10. Timber Sale Contract (10/22)

Additional conditions and requirements common to all timber sales are listed on the timber sale contract (R4031) and are available on line at www.michigan.gov/timber. Contact the Unit Manager for additional information or a sample contract. Within 21 days of the date of the award letter, the bidder must sign the contract and provide the required down payment, performance security, and verification of worker's disability compensation. The down payment and performance security shall be in accordance with the provisions of the timber sale contract, in the sums stated in this prospectus. If these actions are not taken, then the Bidder, the Bidder's corporation, and the corporation's principals may not be permitted to bid on State timber sales for a period of 3 months after the first offense, 6 months after the second offense, and 1 year after the third offense. An offense will only be counted against the Bidder for 5 years. In addition, the Bidder certifies that if awarded this contract, the Bidder will complete the timber sale contract in accordance with its terms and any modifications thereof including requirements to purchase, cut, and remove the included timber by the expiration date.

Payment Unit values in the State Forest Timber Sale Contract are calculated based on the advertised value of the Payment Unit as a percentage of the total advertised value of the contract. The advertised value of each Payment Unit is given in the Description of Timber by Payment Unit table on the Timber Sale Information page. For example, if the value of Payment Unit 1 is advertised as \$1,500 and the total Timber Sale value is advertised as \$10,000, the contract price for Payment Unit 1 will be 15% of the total bid price ($\$1,500/\$10,000 * 100$).

11. Disclaimer of Estimates and Bidder's Warranty of Inspection (10/22)

Before submitting this bid, the Bidder is advised and cautioned to inspect the sale area, review the requirements of the sale contract, and take other steps as may be reasonably necessary to ascertain the location, estimated volumes, construction estimates, and operating costs of the proposed sale. Failure to do so will not relieve the Bidder from responsibility for completing the contract.

The Bidder warrants that this bid is submitted solely on the basis of the Bidder's examination and inspection of the quality and quantity of the timber offered for sale and the Bidder's opinion of the value thereof and the costs of recovery. No reliance should be placed on the State of Michigan's estimates of timber quality, quantity or costs of recovery. Bidder further acknowledges that the State of Michigan: (i) expressly disclaims any warranty of fitness of timber for any purpose; (ii) offers this timber as is without any warranty of quality (merchantability) or quantity and (iii) expressly disclaims any warranty as to the quantity or quality of timber sold.

12. Certification and Chain-of-Custody (10/22)

Unless otherwise indicated in the contract under section 7 – Other Conditions of the Sale Specific Conditions & Requirements, the area encompassed by this timber sale is certified to the standards of the Forest Stewardship Council (FSC) - Certificate #SCS-FM/COC-00090N and the Sustainable Forestry Initiative (SFI) - Certificate #NSF-SFIS-5Y031-SF5. Forest products from this sale may be delivered to the mill as "FSC 100% and / or SFI certified" as long as the contractor hauling the forest products is chain-of-custody (COC) certified or covered under a COC certificate from the destination mill. The purchaser is responsible for maintaining COC after leaving the sale area.

13. Good Neighbor Authority (GNA) Requirements (10/22)

If the name of this timber sales contains the acronym GNA, it is authorized by the Good Neighbor Authority (GNA) and covered by various agreements between the U.S. Forest Service and the State. The timber sale occurs on federal land and the following conditions apply:

GNA contracts on US Forest Service land will not be awarded to purchasers on the Federal list of excluded parties. The System for Award Management (SAM) will be checked for active excluded parties prior to award of contract. In

addition, the Bidder to whom award is made must complete an Assurance Regarding Felony Conviction or Tax Delinquent Status for Corporate Applicants (AD-3031).

14. Good Neighbor Authority (GNA) Requirements, con't (10/22)

Bidder certifies, by signing this bid form, that to the best of Bidder's knowledge that the following representations are accurate and complete.

- a. That the Bidder and its principals are not presently debarred, suspended, proposed for debarment, declared ineligible, or voluntary excluded from timber sales (covered transactions) by any Federal department or agency.
- b. That the Bidder and its principals have not within a 3-year period preceding this bid been convicted of or had a civil judgment rendered against them for commission of fraud or a criminal offense in connection with obtaining , attempting to obtain, or performing a public (Federal, State, or local) transaction or contract under a public transaction; violation of Federal or State antitrust statutes or commission of embezzlement, theft, forgery, bribery, falsification or destruction of records, making false statements, or receiving stolen property.
- c. That the Bidder and its principals are not presently indicted for or otherwise criminally or civilly charged by a governmental entity (Federal, State, or local) with commission of any of the offenses enumerated in paragraph b of this certification.
- d. That the Bidder and its principals have not within a 3-year period preceding this bid had one or more public transactions (Federal, State, or local) terminated for breach or default of a timber or forest product contract.

Bidders that cannot certify this requirement, in whole or in part, shall submit an explanation with their bid.

Scott Bowen
Director

TIMBER SALE INFORMATION

Batty Doe Cedar Cut CRP (45-102-25)
T42N, R12W, SEC. 26.
Mackinac County (Advertised Price \$158.00)

SALE NOTE: This sale is part of a Michigan Technological University silvicultural study for cedar regeneration . This sale is being sold by the acre. The purchaser is required to report total volumes harvested by species in cords. Upon completion of harvesting the purchaser will be eligible for a free/reduced extension on another Michigan DNR timber sale.

A timber sale contract for this lump sum, sealed bid timber sale will be awarded to the responsible bidder offering the highest sealed bid price. All units of volume listed below were estimated using the Inventory Manager computer program and the new Michigan taper model. Bids must be at or above the following advertised price for each product and species:

<u>PRODUCTS & SPECIES</u>	<u>ESTIMATED UNITS*</u>	<u>ADVERTISED PRICE</u>
Pulpwood		
Misc. Species 1	15.8 Acres	\$ 10.00 / Acre

* The estimated units are final and not subject to adjustment. Prospective bidders are urged to examine this timber and to make their own estimates of quantity and quality.

BOND AND PAYMENT SCHEDULE:

1. A bond in the amount of \$1,000.00 to insure faithful performance of the conditions of the contract will be deposited by the successful bidder within 21 days of the sale award.
2. Cutting in any sale or unit without the required advance payment would be considered a trespass.
3. Total payment must be paid in advance or according to the following schedule :
 - (a) Ten percent (10%) of the sale value must be paid within 21 days of the sale award.
 - (b) The remainder is due before cutting begins.
 - (c) Payment for each of the following units must be made before cutting begins in that unit:

<u>PAYMENT UNIT NUMBER</u>	<u>PERCENT OF TOTAL SALE VALUE</u>
01	100.0%
4. If no cutting takes place, the 10% down payment will not be refunded.
5. Operations on the contract issued will terminate on 06/30/2028.

SALE STATISTICS

Volumes were calculated in cubic feet using the Michigan taper model. Cubic foot volume includes all wood inside bark for the product indicated. For display purposes, cubic feet were converted to cords and MBF using a simple conversion factor, e.g. 79 cubic feet per cord and 185 cubic feet per MBF. The cubic foot volumes are precise; the cords and MBF volumes are not. Cubic foot volume cannot be directly converted to cords or boards with precision.

SALE VOLUMES

The total estimated sale volume may not equal the sum of the species/products due to the nature of statistical calculations associated with double sampling methodology.

<u>VOLUME</u>			<u>STATISTICAL RANGE IN CORDS</u>	
<u>TOTAL CUBIC FEET</u>	<u>TOTAL CORDS</u>	<u>PERCENT ERROR</u>	<u>MINIMUM</u>	<u>MAXIMUM</u>
2,218	28	N/A	28	28
15.80 acres are being sold by the acre and do not have cubic foot or cord volumes.				

VDU VOLUMES

A VDU is a Volume Determination Unit. Volumes and their associated statistics are calculated at the VDU level and summarized to the sale level. There is often a one to one relationship between a VDU and a Payment Unit, but not always, depending on the cruise design. Refer to the VDU TO PAYMENT UNIT table.

	VOLUME			RANGE IN CORDS	
VDU	TOTAL CUBIC FEET	TOTAL CORDS	PERCENT ERROR	MINIMUM	MAXIMUM
49 *			N/A		
TOTAL:	N/A	N/A		N/A	N/A

* This VDU is being sold by the acre. There are no cruise statistics available.

VDU TO PAYMENT UNIT

When a VDU is associated with more than one Payment Unit (PU), the VDU volumes are assigned to the PU based on acres of the VDU within the PU.

VDU	VDU ACRES	PU	PU ACRES
TOTAL:			

DESCRIPTION OF TIMBER BY PAYMENT UNIT (PU)

PU	MARKET GROUP	PRODUCT	QUANTITY	UNIT	ACRES	ADVERTISE PRICE
1	Misc. Species 1	Pulpwood	15.8	Acres	15.8	\$158.00

TOTAL:15.8Acres

Sale Specific Conditions & Requirements

Sale Name: Batty Doe Cedar Cut CRP

Sale Number: 45-102-25 Seq#: 2

1 - Sale Area

1.2 - Boundaries

1.2.1 - Painted Boundaries (9/19)

For Payment Unit 1A (strip thinning), the exterior sale boundary lines against state are marked with red paint. The painted boundary line trees are not Included Timber and are to be protected unless marked with orange paint. In addition, a 16-foot-wide skid trail is marked through the center of the unit using yellow paint. All equipment operations in unit 1A must occur between the two yellow painted lines that delineate the skid trail. No equipment can operate outside of the skid trail without permission from the Unit Manager or his/her representative. Yellow trees are designated for harvest.

For Payment Unit 1B (strip clearcut), the exterior sale boundary lines against state are marked with red paint. The painted boundary line trees are not Included Timber and are to be protected. In addition, there is a single yellow painted boundary in each strip that is 16 feet from, and parallels, the red boundary. This delineates the skid trail. All equipment operations in unit 1B must occur between the red boundary line and the yellow painted line that delineate the skid trail. No equipment can operate outside of the skid trail without permission from the Unit Manager or his/her representative. Yellow trees are designated for harvest.

For Payment Unit 1C and 1D (gaps), the exterior sale boundary lines against state are marked with red paint. The painted boundary line trees are not Included Timber and are to be protected unless marked with orange paint.

2 - Timber Specifications

2.1 - Included Timber

2.1.2 - Clearcut Unit(s) w/o Unmerchantable Trees (8/11)

Within Payment Unit(s) 1B, cut all trees which meet minimum piece specifications in 2.2 Utilization.

Note that: Skid trail(s) are marked with yellow paint. No equipment can cross the yellow painted boundary during sale operations without approval from the Unit Manager or his/her representative. Trees marked with yellow paint are designated for harvest.

2.1.3 - Cut Tree Marked Unit(s) (12/08)

Within Payment Unit(s) 1A, all trees are designated for cutting when marked with orange paint above and below stump height, regardless of merchantability.

Note that: Skid trail boundaries are marked with yellow paint. All trees within the skid trail boundaries are designated for harvest. No equipment may cross the yellow painted boundary during sale operations without approval from the Unit Manager or his/her representative. Trees marked with yellow paint are designated for harvest.

2.1.7 - Leave Tree Marked Unit(s) (6/14)

Within Payment Unit(s) 1C and 1D, all cedar, hemlock, yellow birch and white pine, which meet minimum piece specifications in 2.2 Utilization, are designated for cutting. In addition, cut all other trees that are one (1) inch or more at DBH, except do not cut trees marked with green paint above and below the stump height.

Note that: No equipment shall be operated within the red boundary lines that delineate the gaps. Skid trails will be established around portions of the perimeter of the gaps which can be used for harvesting and skidding operations. These skid trails will be established by the Sale Administrator and marked with orange paint.

2.1.11 - Description of Timber Note (2/04)

Note that The Purchaser is required to report total volume harvested in cords by species upon completion of the contract. This is required as part of the research.

Payment Unit 1 is being sold by the acre. There are 6.2 acres of strip thinnings, 5.9 acres of strip clearcuts, 1.1 acres of gaps, and 2.6 acres in 16-foot-wide skid trails for access. A reconnaissance cruise was done in the Sale Area which showed that

the volume per acre ranged from 40 cords per acre to 70 cords per acre. The Sale Area is dominated by cedar with a small component of black spruce, paper birch and red maple.

2.2 - Utilization

2.2.6 - Roundwood Operation Required (3/21)

The skidding of whole trees or tree segments with limbs attached is prohibited. All products must be produced as roundwood and forwarded to existing roads or landing areas in final product length. Trees must be harvested with in-woods processor (feller bunching harvester will not be allowed) in order to retain existing understory.

3 - Payments

3.4 - Damaged Timber

3.4.1 - Damaged Timber (12/24)

General Condition and Requirement 3.4 Damaged Timber, defines liquidated damages for undesignated live merchantable trees which are cut or injured. In addition, extreme care should be taken to avoid damage to tree seedlings and saplings.

Within the Sale Area, if more than 25% of the cedar seedlings or saplings (1/4" to 4.5" DBH) within a specified portion of the Sale Area are damaged, liquidated damages will be assessed at \$500 per acre for all acreage within that specified portion of the Sale Area that was damaged.

No damage is acceptable to undesignated live merchantable trees. Within the Sale Area, if more than 5% of trees (> 4.5" DBH) within a specified area of the sale are damaged, liquidated damages will be assessed for all trees damaged. Rates will be in accordance with General Condition and Requirement 3.4 Damaged Timber.

3.4.3 - Special Protection Areas (8/11)

The Purchaser shall protect special protection areas from damage by the Purchaser's operations. Special protection areas are the interior of Payment Units 1C and 1D and areas identified on the Timber Sale Map as special protection areas. The Purchaser shall not run equipment or place skid trails within these areas. If the Purchaser's operations have left equipment tracks, ruts or other ground damage within special protection areas through carelessness, the Purchaser shall pay \$500 as fixed, agreed and liquidated damages for each canopy gap damaged.

4 - Transportation

4.1 - Construction

4.1.3 - Slash and Earthen Piles (8/04)

Piles or windrows of earth along roads and landings that have been widened or constructed shall be leveled. Slash from road maintenance or construction, including stumps, shall be dispersed outside of designated harvest areas, unless otherwise instructed by the Sale Administrator. This specification also applies to skid trails.

4.1.4 - Timber Removed for Construction (3/23)

Trees cut or damaged in the process of pre-approved road, landing, or skid trail construction will be decked in an area separate from other Designated Timber and not removed until measured by the Sale Administrator. Payment will be made at contract prices or average prices, if not on the contract.

4.1.6 - Road Construction (4/24)

Construction of new roads or improvements of existing roads shall be done in such a way as to minimize the environmental and visual impacts. Merchantable trees shall be cut and utilized unless otherwise directed. Non-merchantable trees shall be severed and laid flat on the ground. Slash shall be scattered, not left in windrows, and kept a minimum of 10 feet back from the road edge. Stumps shall be set upright, not left on edge, and be moved at least 10 feet away from the road edge. Disturbed soil shall be feathered into the woods and not left in berms or windrows. In addition, within and accessing the sale all skid trails and road locations must be approved by the Unit Manager or his/her representative. See Timber Sale Maps for proposed skid trail and road locations.

4.1.7 - Road Closure (10/11)

All new roads built into the sale must be blocked to vehicle traffic upon completion of the sale. Overgrown roads that are reopened shall be considered new roads. In general, this will require constructing double earthen berms at strategic locations. These roads must be rendered impassable to cars and trucks. All stumps from road building and landing construction must be

reserved to block any newly constructed roads upon completion of the sale. These stumps must be scattered along the road system to prohibit vehicular movement. Contact the Sale Administrator for specific details of design and placement.

4.2 - Maintenance

4.2.3 - Road maintenance (8/13)

The following road maintenance is required: Within 60 days of completion of hauling, or if no hauling occurs for 60 days, the road must be maintained and graded. This includes cleaning of drainage areas, grading, crowning and filling with gravel, if necessary. Damages will be assessed if grading/repair does not occur.

4.2.5 - Two Wheel Drive Condition (2/04)

All existing trail roads on and adjacent to the Sale Area must be passable by two-wheel drive traffic for the duration of the sale.

5 - Operations

5.1 - Notification

5.1.1 - Pre-sale Conference (10/16)

A pre-sale conference on site between the Purchaser and Sale Administrator is required prior to beginning any operations, to determine land and road locations, go over operating restrictions and slash specs, and skid trail locations. The Unit Manager or his/her representative must be contacted at least 5 days in advance to schedule the conference.

5.2 - Conduct of Operations

5.2.1 - Slash

5.2.1.2 - Slash Removal

5.2.1.2.6 - Slash Removal, General (7/05)

All slash must be removed from Payment Units 1B and 1C. Slash can be utilized in skid trails to assist in flotation or slash can be evenly scattered outside of the Payment Units.

5.2.1.11 - Slash for Reforestation (3/21)

To facilitate reforestation, within Payment Unit 1A, slash shall be used in skid trails to support equipment flotation. If not used in skid trails, slash shall be evenly distributed throughout the Payment Unit. Bunched tops within the cutting area shall be broken up and scattered. Processing sites shall not be left with a compacted layer of slash.

Within Payment Unit 1D, all slash is to be removed from the unit except, do not process six (6) cedar trees above six (6) inches in diameter, these intact tops with branches attached must be arranged in a jack strawed/campfire orientation within the center of the gap to impede access by deer and protect existing cedar regeneration.

5.2.3 - Operating Restrictions

5.2.3.2 - Operating Restrictions (9/11)

Within Payment Unit(s) 1, unless changed by written agreement, cutting, skidding, and hauling are limited to the period of December 1 to March 31. This restriction is because low ground conditions and providing browse for wintering deer.

5.2.17 - Timber Mats and Interlocking Composite Mats (5/23)

Some roads or skid trails may require extra protection such as that afforded by timber mats, interlocking composite mats, or another approved system. If available, mats may be borrowed from the DNR. A Timber Sale Contract Amendment will be used to document the Purchaser's use of the DNR's mats. Contact the Sale Administrator regarding availability and pick-up. Timber mats are available from various field offices. Composite mats are only available from the Grayling field office and the Marquette ICC. The Purchaser is responsible for picking up and hauling the mats to and from the site. The composite mats will require DNR staff onsite for installation and removal. Contact the Sale Administrator to schedule at least 30 days before desired install/removal date. All mats must be cleaned prior to drop off. This may include, but is not limited to, power washing and brushing to remove mud and debris. A charge of \$700.00 per timber mat and \$2,000.00 per composite mat will be assessed for all damaged or non-returned mats. Damage for the crane/timber mats is defined as three or more broken cants. Damage for the composite mats is defined as cracked or broken mats.

5.2.32 - Decking/Landing Restoration (9/13)

All decking and landing areas must have the surface area restored to a condition equal to or better than before. This is to

ensure the proper regeneration of the stand. Wood debris, chips and "cookies" from trimmings must be removed or scattered away from landing and loading areas and may not be windrowed on the edge.

5.2.38 - No Decking Against Live Trees (2/04)

Cut products may not be decked against unmarked or designated leave trees.

5.5 - Protection of Improvements

5.5.3 - Protection of Improvements Detail (10/13)

The following are specific protection measures for this sale. Trail cameras have been installed within the Sale Area as part of the research project. Before operations begin, contact the Sale Administrator to have the cameras removed. If cameras are damaged, an invoice will be sent to the Purchaser for the cost of replacing the camera.

6 - Safety and Fire Prevention

6.2 - Signing

6.2.1 - Road Posting (10/20)

The Purchaser is responsible for posting and maintaining caution signs on the haul roads prior to beginning operations. The road must be posted at appropriate distances from the Sale Area to warn of logging activity and truck traffic. Signs must be removed when harvest operations are suspended or completed. The Purchaser will provide these signs.

7 - Other Conditions

7.2 - Extensions

7.2.7 - Research Extension (4/25)

This is a research sale with a short contract length. The sale must be harvested promptly. One (1), twelve (12) month extension can be applied to one (1) other State Forest Timber Sale Contract owned by the Purchaser or owned by one (1) designated sub-contractor of the Purchaser that works this contract. To qualify, the contract to be extended must be extended by the original expiration date of this contract. If this is the first extension on the other State Forest Timber Sale Contract, then the 5% extension fee will be waived. If this is an additional extension, the 10% fee will be reduced to 5%. The research extension must be used before this contract is closed out. This specification does not alleviate the Purchaser from any contractual obligations of the extended State Forest Timber Sale Contract. Per General Condition & Requirement 7.2, extensions are at the sole discretion of the DNR.



TIMBER SALE MAP

This information provided by authority of Part 525, 1994 PA 451, as amended.

Sale Number
45-102-25

Date
05/13/2025

Forest Management Unit
Sault Ste Marie Mgt Unit

County
Mackinac

Mapped By: Brinks
Cruised By: Plato

Scale
1:15,840

Page
1
Of
2

Township
42N
Range
12W
Section(s) and
Subdivision(s)
Sec. 26 E1/2NW,W1/2NE;

Cover Type

A = Aspen	J = Jack Pine	O = Oak	U = Upland Brush
B = Paper Birch	K = Rock	P = Lowland Poplar	UM = Upland Mix Forest
C = Cedar	L = Lowland Brush	Q = Mixed Swamp Conifer	V = Bog or Marsh
D = Treed Bog	LM = Lowland Mix Forest	R = Red Pine	W = White Pine
E = Swamp Hardwoods	M = Maple, Beech, Birch	S = Black Spruce	X = Non Stocked
F = Spruce/Fir	MC = Mixed Conifer	T = Tamarack	Y = Sand
G = Grass	MD = Mixed Deciduous	Z = Water	
H = Hemlock	N = Marsh		

Density

0 = Non Stocked	5 = Pole Timber Medium
1 = Seedling Sapling Poor	6 = Pole Timber Well
2 = Seedling Sapling Medium	7 = Saw Timber Poor
3 = Seedling Sapling Well	8 = Saw Timber Medium
4 = Pole Timber Poor	9 = Saw Timber Well

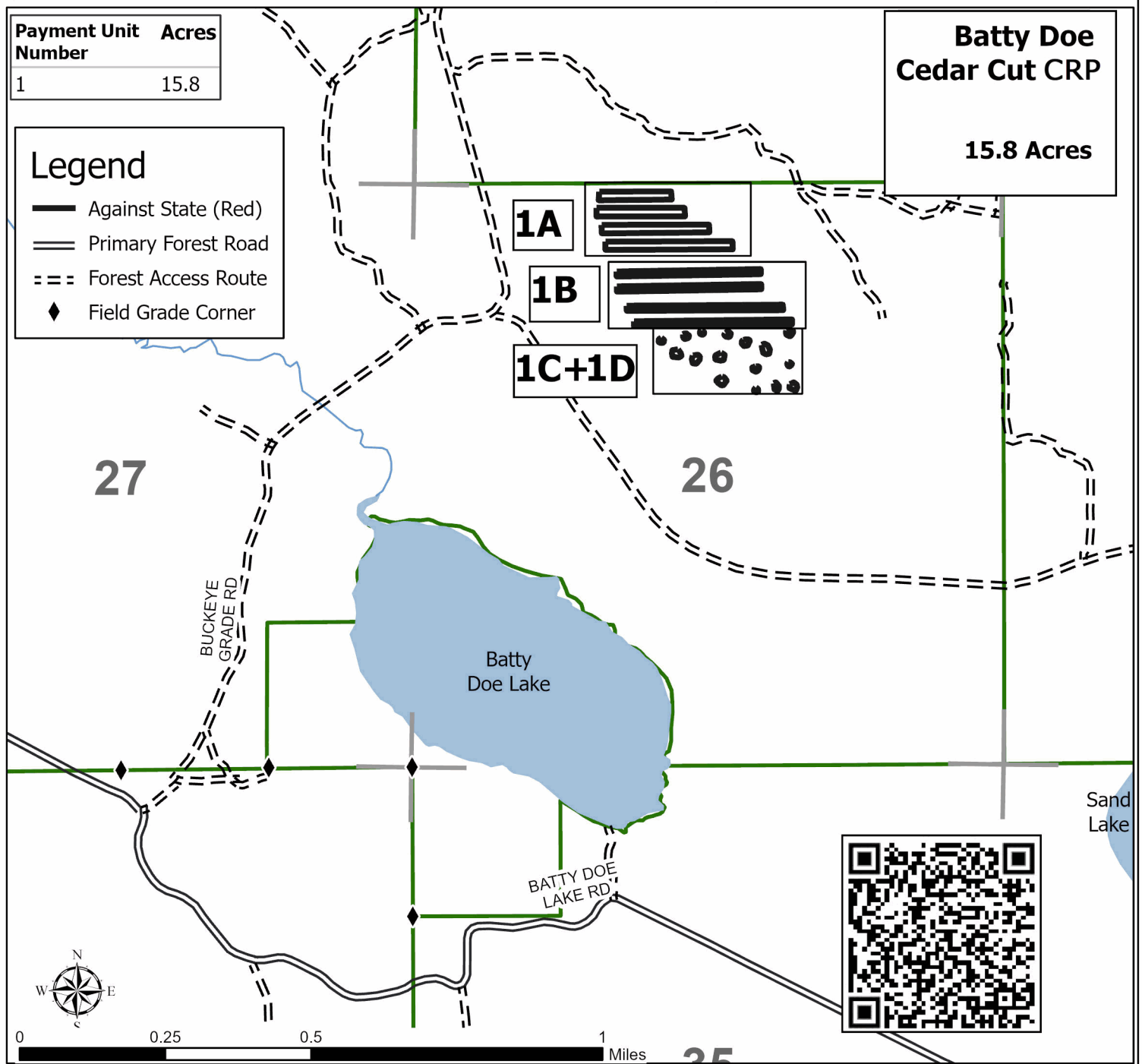
Payment Unit Number	Acres
1	15.8

Legend

- Against State (Red)
- Primary Forest Road
- Forest Access Route
- Field Grade Corner

**Batty Doe
Cedar Cut CRP**

15.8 Acres





TIMBER SALE MAP

This information provided by authority of Part 525, 1994 PA 451, as amended.

Sale Number
45-102-25

Date
05/13/2025

Forest Management Unit	County	Mapped By: Brinks	Scale	Page	Of
Sault Ste Marie Mgt Unit	Mackinac	Cruised By: Plato	1:5,000	2	2

Township	Range	Section(s) and Subdivision(s)
42N	12W	Sec. 26 E1/2NW,W1/2NE;

Cover Type

A = Aspen	J = Jack Pine	O = Oak	U = Upland Brush
B = Paper Birch	K = Rock	P = Lowland Poplar	UM = Upland Mix Forest
C = Cedar	L = Lowland Brush	Q = Mixed Swamp Conifer	V = Bog or Marsh
D = Treed Bog	LM = Lowland Mix Forest	R = Red Pine	W = White Pine
E = Swamp Hardwoods	M = Maple, Beech, Birch	S = Black Spruce	X = Non Stocked
F = Spruce/Fir	MC = Mixed Conifer	T = Tamarack	Y = Sand
G = Grass	MD = Mixed Deciduous		Z = Water
H = Hemlock	N = Marsh		

Density

0 = Non Stocked	5 = Pole Timber Medium
1 = Seedling Sapling Poor	6 = Pole Timber Well
2 = Seedling Sapling Medium	7 = Saw Timber Poor
3 = Seedling Sapling Well	8 = Saw Timber Medium
4 = Pole Timber Poor	9 = Saw Timber Well

Payment Unit
Number

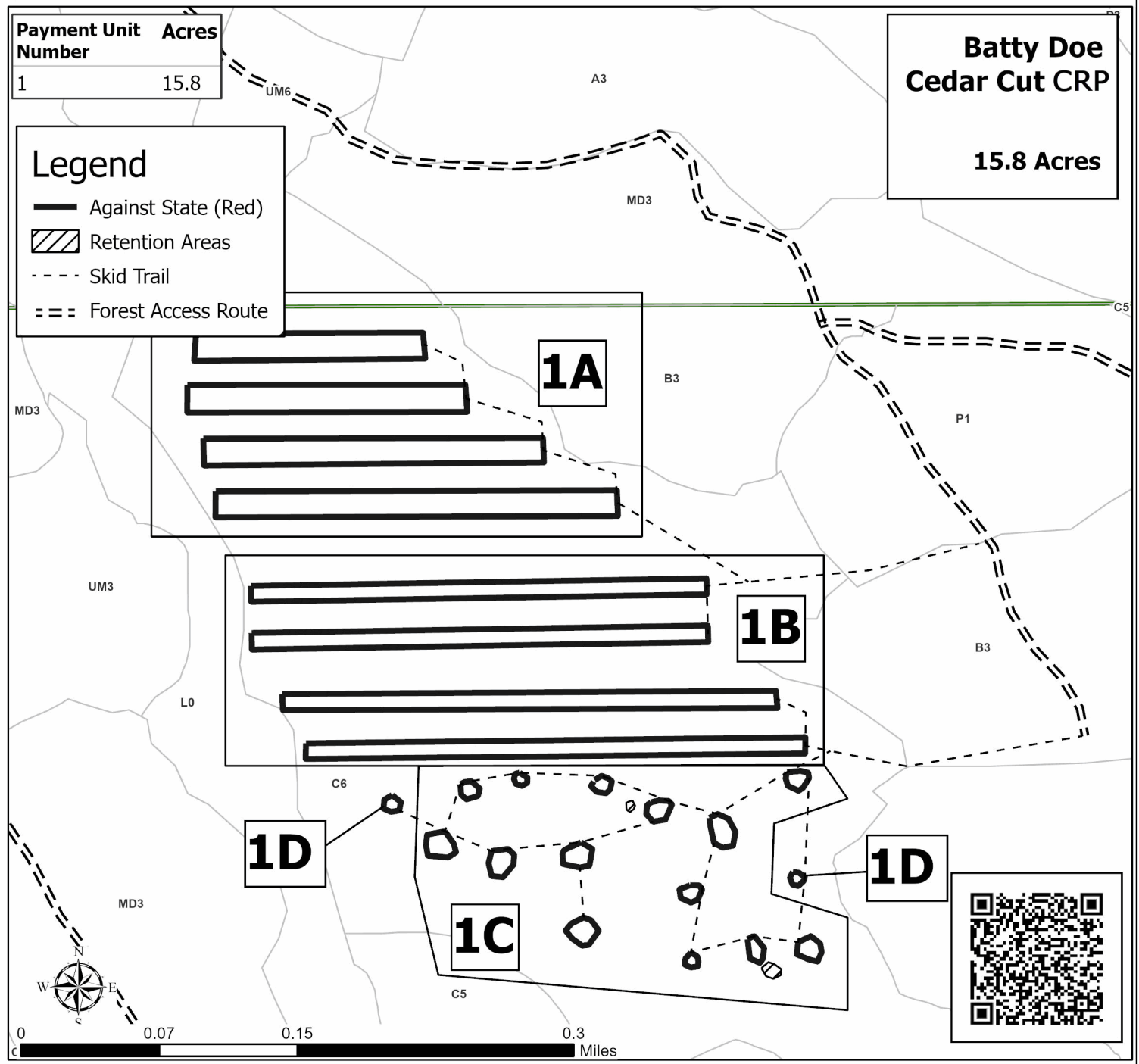
1 15.8

Legend

- Against State (Red)
- ▨ Retention Areas
- - - Skid Trail
- === Forest Access Route

**Batty Doe
Cedar Cut CRP**

15.8 Acres



TIMBER SALE INFORMATION

Hog Island Cedar Cut CRP (45-103-25)

T43N, R07W, SEC. 7.

Mackinac County (Advertised Price \$142.00)

SALE NOTE: This sale is part of a Michigan Technological University silvicultural study for cedar regeneration . This sale is being sold by the acre. The purchaser is required to report total volumes harvested by species in cords. Upon completion of harvesting the purchaser will be eligible for a free/reduced extension on another Michigan DNR timber sale.

A recreation site such as a trail, pathway, or campground is within the sale area or the vicinity. Certain restrictions/specifications may be applicable including time restrictions.

A timber sale contract for this lump sum, sealed bid timber sale will be awarded to the responsible bidder offering the highest sealed bid price. All units of volume listed below were estimated using the Inventory Manager computer program and the new Michigan taper model. Bids must be at or above the following advertised price for each product and species:

<u>PRODUCTS & SPECIES</u>	<u>ESTIMATED UNITS*</u>	<u>ADVERTISED PRICE</u>
Pulpwood		
Misc. Species 1	14.2 Acres	\$ 10.00 / Acre

* The estimated units are final and not subject to adjustment. Prospective bidders are urged to examine this timber and to make their own estimates of quantity and quality.

BOND AND PAYMENT SCHEDULE:

1. A bond in the amount of \$1,000.00 to insure faithful performance of the conditions of the contract will be deposited by the successful bidder within 21 days of the sale award.
2. Cutting in any sale or unit without the required advance payment would be considered a trespass.
3. Total payment must be paid in advance or according to the following schedule :
 - (a) Ten percent (10%) of the sale value must be paid within 21 days of the sale award.
 - (b) The 10% down payment will be credited towards the first unit cut.
 - (c) Payment for each of the following units must be made before cutting begins in that unit:

<u>PAYMENT UNIT NUMBER</u>	<u>PERCENT OF TOTAL SALE VALUE</u>
01	33.1%
02	66.9%

4. If no cutting takes place, the 10% down payment will not be refunded.
5. Operations on the contract issued will terminate on 06/30/2028.

SALE STATISTICS

Volumes were calculated in cubic feet using the Michigan taper model. Cubic foot volume includes all wood inside bark for the product indicated. For display purposes, cubic feet were converted to cords and MBF using a simple conversion factor, e.g. 79 cubic feet per cord and 185 cubic feet per MBF. The cubic foot volumes are precise; the cords and MBF volumes are not. Cubic foot volume cannot be directly converted to cords or boards with precision.

SALE VOLUMES

The total estimated sale volume may not equal the sum of the species/products due to the nature of statistical calculations associated with double sampling methodology.

<u>VOLUME</u>		<u>STATISTICAL RANGE IN CORDS</u>		
<u>TOTAL CUBIC FEET</u>	<u>TOTAL CORDS</u>	<u>PERCENT ERROR</u>	<u>MINIMUM</u>	<u>MAXIMUM</u>
1,954	25	N/A	25	25
14.20 acres are being sold by the acre and do not have cubic foot or cord volumes.				

VDU VOLUMES

A VDU is a Volume Determination Unit. Volumes and their associated statistics are calculated at the VDU level and summarized to the sale level. There is often a one to one relationship between a VDU and a Payment Unit, but not always, depending on the cruise design. Refer to the VDU TO PAYMENT UNIT table.

	VOLUME			RANGE IN CORDS	
VDU	TOTAL CUBIC FEET	TOTAL CORDS	PERCENT ERROR	MINIMUM	MAXIMUM
74 *			N/A		
741 *			N/A		
TOTAL:	N/A	N/A		N/A	N/A

* This VDU is being sold by the acre. There are no cruise statistics available.

VDU TO PAYMENT UNIT

When a VDU is associated with more than one Payment Unit (PU), the VDU volumes are assigned to the PU based on acres of the VDU within the PU.

VDU	VDU ACRES	PU	PU ACRES
TOTAL:			

DESCRIPTION OF TIMBER BY PAYMENT UNIT (PU)

PU	MARKET GROUP	PRODUCT	QUANTITY	UNIT	ACRES	ADVERTISE PRICE
1	Misc. Species 1	Pulpwood	4.7	Acres	4.7	\$47.00
2	Misc. Species 1	Pulpwood	9.5	Acres	9.5	\$95.00
TOTAL:			14.2	Acres		

Sale Specific Conditions & Requirements

Sale Name: Hog Island Cedar Cut CRP

Sale Number: 45-103-25 Seq#: 2

1 - Sale Area

1.2 - Boundaries

1.2.1 - Painted Boundaries (9/19)

For Payment Unit 2A (strip thinning), the exterior sale boundary lines against state are marked with red paint. The painted boundary line trees are not Included Timber and are to be protected unless marked with orange paint. In addition, a 16-foot-wide skid trail is marked through the center of the unit using yellow paint. All equipment operations in unit 2A must occur between the two yellow painted lines that delineate the skid trail. No equipment can operate outside of the skid trail without permission from the Unit Manager or his/her representative. Yellow trees are designated for harvest.

For Payment Unit 1 (strip clearcut), the exterior sale boundary lines against state are marked with red paint. The painted boundary line trees are not Included Timber and are to be protected. In addition, there is a single yellow painted boundary in each strip that is 16 feet from, and parallels, the red boundary. This delineates the skid trail. All equipment operations in unit 1 must occur between the red boundary line and the yellow painted line that delineate the skid trail. No equipment can operate outside of the skid trail without permission from the Unit Manager or his/her representative. Yellow trees are designated for harvest.

In Payment Unit 2B and 2C (gaps), The painted boundary line trees are not Included Timber and are to be protected unless they are adjacent to the skid trails that are established for harvesting the gaps. These boundary line trees will be designated by the sale administrator.

2 - Timber Specifications

2.1 - Included Timber

2.1.2 - Clearcut Unit(s) w/o Unmerchantable Trees (8/11)

Within Payment Unit(s) 1, cut all trees which meet minimum piece specifications in 2.2 Utilization.

Note that: Skid trails are marked with yellow paint. No equipment can cross the yellow painted boundary during sale operations without approval from the Unit Manager or his/her representative. Trees marked with yellow paint are designated for harvest.

2.1.3 - Cut Tree Marked Unit(s) (12/08)

Within Payment Unit(s) 2A, all trees are designated for cutting when marked with orange paint above and below stump height, regardless of merchantability.

Note that: Skid trail boundaries are marked with yellow paint. All trees within the skid trail boundaries are designated for harvest. No equipment may cross the yellow painted boundary during sale operations without approval from the Unit Manager or his/her representative. Trees marked with yellow paint are designated for harvest.

2.1.7 - Leave Tree Marked Unit(s) (6/14)

Within Payment Unit(s) 2B and 2C, all cedar, hemlock, yellow birch and white pine, which meet minimum piece specifications in 2.2 Utilization, are designated for cutting. In addition, cut all other trees that are one (1) inch or more at DBH, except do not cut trees marked with green paint above and below the stump height.

Note that: No equipment shall be operated within the red boundary lines that delineate the gaps. Skid trails will be established around portions of the perimeter of the gaps which can be used for harvesting and skidding operations. These skid trails will be established by the Sale Administrator and marked with orange paint.

2.1.11 - Description of Timber Note (2/04)

Note that the Purchaser is required to report total volume harvested in cords by species upon completion of the contract. This is required as part of the research.

Payment Unit 1 and 2 are being sold by the acre. There are 7.4 acres of strip thinning's, 4.2 acres of strip clearcuts, 0.9 acres

of gaps, and 1.7 acres in 16-foot-wide skid trails for access. A reconnaissance cruise was done in the Sale Area which showed that the volume per acre ranged from 32 cords per acre to 51 cords per acre. The Sale Area is dominated by cedar with a small component of fir, paper birch and red maple.

2.2 - Utilization

2.2.6 - Roundwood Operation Required (3/21)

The skidding of whole trees or tree segments with limbs attached is prohibited. All products must be produced as roundwood and forwarded to existing roads or landing areas in final product length. Trees must be harvested with in-woods processor (feller bunching harvester will not be allowed) in order to retain existing understory.

3 - Payments

3.4 - Damaged Timber

3.4.1 - Damaged Timber (12/24)

General Condition and Requirement 3.4 Damaged Timber, defines liquidated damages for undesignated live merchantable trees which are cut or injured. In addition, extreme care should be taken to avoid damage to tree seedlings and saplings.

Within the Sale Area, if more than 25% of the cedar seedlings or saplings (1/4" to 4.5" DBH) within a specified portion of the Sale Area are damaged, liquidated damages will be assessed at \$500 per acre for all acreage within that specified portion of the Sale Area that was damaged.

No damage is acceptable to undesignated live merchantable trees. Within the Sale Area, if more than 5% of trees (> 4.5" DBH) within a specified area of the sale are damaged, liquidated damages will be assessed for all trees damaged. Rates will be in accordance with General Condition and Requirement 3.4 Damaged Timber.

3.4.3 - Special Protection Areas (8/11)

The Purchaser shall protect special protection areas from damage by the Purchaser's operations. Special protection areas are the interior of Payment Units 2B and 2C and areas identified on the Timber Sale Map as special protection areas. The Purchaser shall not operate equipment or place skid trails within these areas. If the Purchaser's operations have left equipment tracks, ruts, or other ground damage, through carelessness, the Purchaser shall pay \$500 as fixed, agreed and liquidated damages for each canopy gap damaged.

4 - Transportation

4.1 - Construction

4.1.2 - Stream Crossings, Specific (3/11)

Crossing Hog Island Creek which runs in the ditch on the east side of Hog Island Rd will require the installation of a portable bridge which may be borrowed from the DNR. This installation will be performed in accordance with the specifications on the appropriate permits which shall be provided by the DNR. A 60 day notice of when operations are planned to begin should be given to the DNR to allow time to acquire the permit.

4.1.3 - Slash and Earthen Piles (8/04)

Piles or windrows of earth along roads and landings that have been widened or constructed shall be leveled. Slash from road maintenance or construction, including stumps, shall be dispersed outside of designated harvest areas, unless otherwise instructed by the Sale Administrator. This specification also applies to skid trails.

4.1.4 - Timber Removed for Construction (3/23)

Trees cut or damaged in the process of pre-approved road, landing, or skid trail construction will be decked in an area separate from other Designated Timber and not removed until measured by the Sale Administrator. Payment will be made at contract prices or average prices, if not on the contract.

4.1.6 - Road Construction (4/24)

Construction of new roads or improvements of existing roads shall be done in such a way as to minimize the environmental and visual impacts. Merchantable trees shall be cut and utilized unless otherwise directed. Non-merchantable trees shall be severed and laid flat on the ground. Slash shall be scattered, not left in windrows, and kept a minimum of 10 feet back from the road edge. Stumps shall be set upright, not left on edge, and be moved at least 10 feet away from the road edge. Disturbed soil shall be feathered into the woods and not left in berms or windrows.

4.1.7 - Road Closure (10/11)

All new roads built into the sale must be blocked to vehicle traffic upon completion of the sale. Overgrown roads that are reopened shall be considered new roads. In general, this will require constructing double earthen berms at strategic locations. These roads must be rendered impassable to cars and trucks. All stumps from road building and landing construction must be reserved to block any newly constructed roads upon completion of the sale. These stumps must be scattered along the road system to prohibit vehicular movement. Contact the Sale Administrator for specific details of design and placement.

4.2 - Maintenance

4.2.1 - Hauling Restriction (12/08)

Hauling on Hog Island Rd is restricted year-round. The restriction is administered by the Mackinac County Road Commission. All necessary permits must be obtained through the road commission.

4.2.3 - Road maintenance (8/13)

The following road maintenance is required: Within 60 days of completion of hauling, or if no hauling occurs for 60 days, the road must be maintained and graded. This includes cleaning of drainage areas, grading, crowning and filling with gravel, if necessary. Damages will be assessed if grading/repair does not occur.

4.2.5 - Two Wheel Drive Condition (2/04)

All existing trail roads on and adjacent to the Sale Area must be passable by two-wheel drive traffic for the duration of the sale.

5 - Operations

5.1 - Notification

5.1.1 - Pre-sale Conference (10/16)

A pre-sale conference on site between the Purchaser and Sale Administrator is required prior to beginning any operations, to determine landing and road locations, go over operating restrictions and slash specs, and skid trail locations. The Unit Manager or his/her representative must be contacted at least 5 days in advance to schedule the conference.

5.2 - Conduct of Operations

5.2.1 - Slash

5.2.1.2 - Slash Removal

5.2.1.2.6 - Slash Removal, General (7/05)

All slash must be removed from Payment Unit 1, 2A, and 2B. Slash can be utilized in skid trails to assist in flotation or slash can be evenly scattered outside of the Payment Units.

5.2.1.11 - Slash for Reforestation (3/21)

To facilitate reforestation, within Payment Unit 2A, slash shall be used in the skid trails to support equipment flotation. If not used in skid trails, slash shall be evenly distributed throughout the Payment Unit. Bunched tops within the cutting area shall be broken up and scattered. Processing sites shall not be left with a compacted layer of slash.

Within Payment Unit 2C, all slash is to be removed from the unit except, do not process six (6) cedar tress above six (6) inches in diameter, these intact tops with branches attached must be arranged in a jack strawed/campfire orientation within the center of the gap to impede access by deer and protect existing cedar regeneration.

5.2.3 - Operating Restrictions

5.2.3.2 - Operating Restrictions (9/11)

Within Payment Unit(s) 1 and 2, unless changed by written agreement, cutting, skidding, and hauling are limited to the period of December 1 to March 31. This restriction is because low ground conditions and providing browse for wintering deer.

5.2.17 - Timber Mats and Interlocking Composite Mats (5/23)

Some roads or skid trails may require extra protection such as that afforded by timber mats, interlocking composite mats, or another approved system. If available, mats may be borrowed from the DNR. A Timber Sale Contract Amendment will be used to document the Purchaser's use of the DNR's mats. Contact the Sale Administrator regarding availability and pick-up.

Timber mats are available from various field offices. Composite mats are only available from the Grayling field office and the Marquette ICC. The Purchaser is responsible for picking up and hauling the mats to and from the site. The composite mats will require DNR staff onsite for installation and removal. Contact the Sale Administrator to schedule at least 30 days before desired install/removal date. All mats must be cleaned prior to drop off. This may include, but is not limited to, power washing and brushing to remove mud and debris. A charge of \$700.00 per timber mat and \$2,000.00 per composite mat will be assessed for all damaged or non-returned mats. Damage for the crane/timber mats is defined as three or more broken cants. Damage for the composite mats is defined as cracked or broken mats.

5.2.32 - Decking/Landing Restoration (9/13)

All decking and landing areas must have the surface area restored to a condition equal to or better than before. This is to ensure the proper regeneration of the stand. Wood debris, chips and "cookies" from trimmings must be removed or scattered away from landing and loading areas and may not be windrowed on the edge.

5.2.38 - No Decking Against Live Trees (2/04)

Cut products may not be decked against unmarked or designated leave trees.

5.2.41 - Snowmobile Trail Protection (9/11)

The snowmobile trail is shown on the Timber Sale Map. Do not cut or damage posts with orange trail markers or traffic control signs. If the trail is used, it must be maintained and restored to a condition equal to or better than before the sale. The road maintenance/restoration must be done prior to December 1. If the trail is used for hauling, it must be graded to the satisfaction of the Unit Manager or his/her representative prior to December 1. If the trail road is to be used for hauling during the snowmobile season, then a snow-covered base must be left on the trail. No decking of forest products will be permitted along the snowmobile trail.

5.5 - Protection of Improvements

5.5.3 - Protection of Improvements Detail (10/13)

The following are specific protection measures for this sale. Trail cameras have been installed within the Sale Area as part of the research project. Before operations begin, contact the Sale Administrator to have the cameras removed. If cameras are damaged, an invoice will be sent to the Purchaser for the cost of replacing the camera.

6 - Safety and Fire Prevention

6.2 - Signing

6.2.1 - Road Posting (10/20)

The Purchaser is responsible for posting and maintaining caution signs on the haul roads prior to beginning operations. The road must be posted at appropriate distances from the Sale Area to warn of logging activity and truck traffic. Signs must be removed when harvest operations are suspended or completed. The Purchaser will provide these signs.

6.2.2 - Snowmobile Trail Posting (10/20)

The Purchaser is responsible for posting and maintaining caution signs on the snowmobile trail prior to beginning operations during the snowmobile season (approximately December 1 to March 31). The trail must be posted at appropriate distances from the Sale Area to warn of logging activity and truck traffic. Signs must be removed when harvest operations are suspended or completed. The Purchaser will provide these signs.

7 - Other Conditions

7.2 - Extensions

7.2.7 - Research Extension (4/25)

This is a research sale with a short contract length. The sale must be harvested promptly. One (1), twelve (12) month extension can be applied to one (1) other State Forest Timber Sale Contract owned by the Purchaser or owned by one (1) designated sub-contractor of the Purchaser that works this contract. To qualify, the contract to be extended must be extended by the original expiration date of this contract. If this is the first extension on the other State Forest Timber Sale Contract, then the 5% extension fee will be waived. If this is an additional extension, the 10% fee will be reduced to 5%. The research extension must be used before this contract is closed out. This specification does not alleviate the Purchaser from any contractual obligations of the extended State Forest Timber Sale Contract. Per General Condition & Requirement 7.2, extensions are at the sole discretion of the DNR.



TIMBER SALE MAP

This information provided by authority of Part 525, 1994 PA 451, as amended.

Sale Number

45-103-25

Date

05/13/2025

Forest Management Unit

Sault Ste Marie Mgt Unit

County

Mackinac

Mapped By: Brinks

Cruised By: Flatt

Scale

1:15,840

Page

1

Of

3

Township
43N

Range
07W

Section(s) and
Subdivision(s) Sec. 7 S1/2NW,S1/2NE,N1/2SW,N1/2SE;

Cover Type

A = Aspen	J = Jack Pine	O = Oak	U = Upland Brush
B = Paper Birch	K = Rock	P = Lowland Poplar	UM = Upland Mix Forest
C = Cedar	L = Lowland Brush	Q = Mixed Swamp Conifer	V = Bog or Marsh
D = Treed Bog	LM = Lowland Mix Forest	R = Red Pine	W = White Pine
E = Swamp Hardwoods	M = Maple, Beech, Birch	S = Black Spruce	X = Non Stocked
F = Spruce/Fir	MC = Mixed Conifer	T = Tamarack	Y = Sand
G = Grass	MD = Mixed Deciduous		Z = Water
H = Hemlock	N = Marsh		

Density

0 = Non Stocked	5 = Pole Timber Medium
1 = Seedling Sapling Poor	6 = Pole Timber Well
2 = Seedling Sapling Medium	7 = Saw Timber Poor
3 = Seedling Sapling Well	8 = Saw Timber Medium
4 = Pole Timber Poor	9 = Saw Timber Well

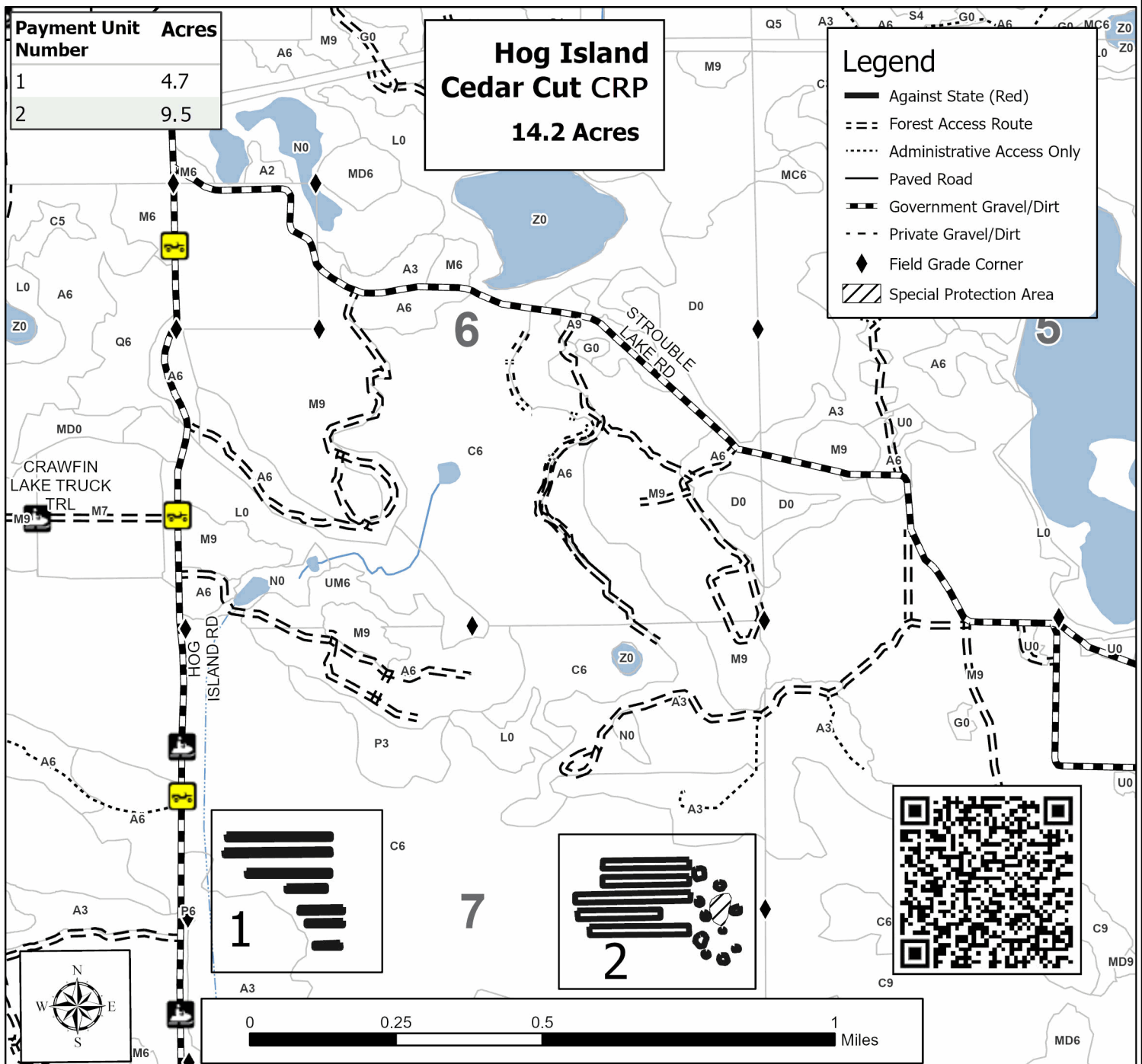
**Payment Unit
Number**

1	4.7
2	9.5

**Hog Island
Cedar Cut CRP
14.2 Acres**

Legend

- Against State (Red)
- - - Forest Access Route
- Administrative Access Only
- Paved Road
- - - Government Gravel/Dirt
- - - Private Gravel/Dirt
- ◆ Field Grade Corner
- ▨ Special Protection Area



**TIMBER SALE MAP**

This information provided by authority of Part 525, 1994 PA 451, as amended.

Sale Number
45-103-25Date
05/14/2025

Forest Management Unit		County	Mapped By: Brinks	Scale 1:5,000	Page 2	Of 3
Sault Ste Marie Mgt Unit		Mackinac	Cruised By: Flatt			
Township 43N	Range 07W	Section(s) and Subdivision(s) Sec. 7 S1/2NW,S1/2NE,N1/2SW,N1/2SE;				

Cover Type

A = Aspen	J = Jack Pine	O = Oak	U = Upland Brush
B = Paper Birch	K = Rock	P = Lowland Poplar	UM = Upland Mix Forest
C = Cedar	L = Lowland Brush	Q = Mixed Swamp Conifer	V = Bog or Marsh
D = Treed Bog	LM = Lowland Mix Forest	R = Red Pine	W = White Pine
E = Swamp Hardwoods	M = Maple, Beech, Birch	S = Black Spruce	X = Non Stocked
F = Spruce/Fir	MC = Mixed Conifer	T = Tamarack	Y = Sand
G = Grass	MD = Mixed Deciduous		Z = Water
H = Hemlock	N = Marsh		

Density

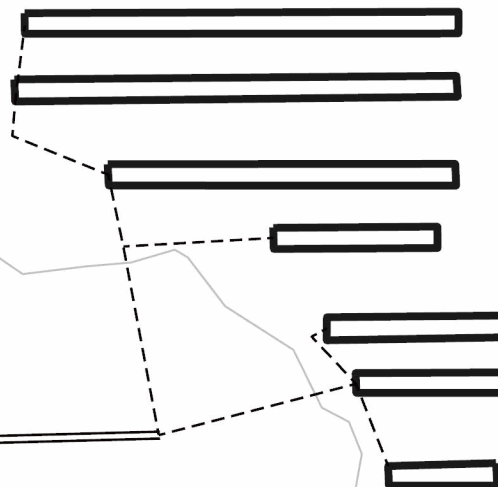
0 = Non Stocked	5 = Pole Timber Medium
1 = Seedling Sapling Poor	6 = Pole Timber Well
2 = Seedling Sapling Medium	7 = Saw Timber Poor
3 = Seedling Sapling Well	8 = Saw Timber Medium
4 = Pole Timber Poor	9 = Saw Timber Well

Payment Unit Acres

1	4.7
2	9.5

Legend

- Against State (Red)
- Temp Bridge Location
- == Temp Road
- - - Skid Trail
- = = = Forest Access Route
- Administrative Access Only
- ▬ Government Gravel/Dirt
- ◆ Field Grade Corner
- ▨ Special Protection Area

**Hog Island
Cedar Cut CRP
14.2 Acres****Unit 1**

0 0.07 0.15 0.3 Miles





TIMBER SALE MAP

This information provided by authority of Part 525, 1994 PA 451, as amended.

Sale Number

45-103-25

Date

05/14/2025

Forest Management Unit

County

Mapped By: Brinks

Sault Ste Marie Mgt Unit

Mackinac

Cruised By: Flatt

Scale

1:5,000

Page

3

Of

3

Township
43N

Range
07W

Section(s) and
Subdivision(s) Sec. 7 S1/2NW,S1/2NE,N1/2SW,N1/2SE;

Cover Type

A = Aspen	J = Jack Pine	O = Oak	U = Upland Brush
B = Paper Birch	K = Rock	P = Lowland Poplar	UM = Upland Mix Forest
C = Cedar	L = Lowland Brush	Q = Mixed Swamp Conifer	V = Bog or Marsh
D = Treed Bog	LM = Lowland Mix Forest	R = Red Pine	W = White Pine
E = Swamp Hardwoods	M = Maple, Beech, Birch	S = Black Spruce	X = Non Stocked
F = Spruce/Fir	MC = Mixed Conifer	T = Tamarack	Y = Sand
G = Grass	MD = Mixed Deciduous	Z = Water	
H = Hemlock	N = Marsh		

Density

0 = Non Stocked	5 = Pole Timber Medium
1 = Seedling Sapling Poor	6 = Pole Timber Well
2 = Seedling Sapling Medium	7 = Saw Timber Poor
3 = Seedling Sapling Well	8 = Saw Timber Medium
4 = Pole Timber Poor	9 = Saw Timber Well

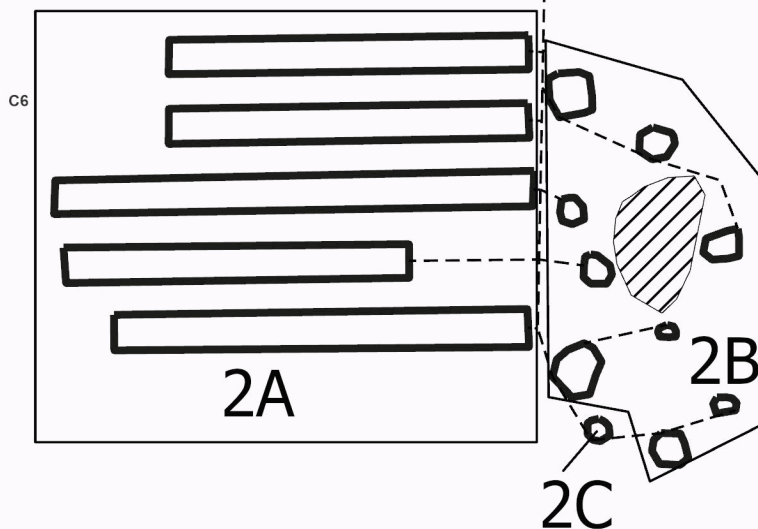
Payment Unit Acres

1	4.7
2	9.5

Legend

- Against State (Red)
- - - Skid Trail
- = = = Forest Access Route
- Administrative Access Only
- ▨ Special Protection Area

**Hog Island
Cedar Cut CRP
14.2 Acres**



TIMBER SALE INFORMATION

Green Maple Mix (45-123-24)

T42N, R12W, SEC. 28; T42N, R12W, SEC. 33; T42N, R12W, SEC. 34.
Mackinac County (Advertised Price \$123,846.70)

A timber sale contract for this lump sum, sealed bid timber sale will be awarded to the responsible bidder offering the highest sealed bid price. All units of volume listed below were estimated using the Inventory Manager computer program and the new Michigan taper model. Bids must be at or above the following advertised price for each product and species:

<u>PRODUCTS & SPECIES</u>	<u>ESTIMATED UNITS*</u>	<u>ADVERTISED PRICE</u>
Sawtimber		
Paper Birch	12.4 MBF	\$ 31.00 / MBF
Red Maple	11.3 MBF	\$ 97.00 / MBF
Sugar Maple	327.5 MBF	\$ 266.00 / MBF
Yellow Birch	1.2 MBF	\$ 49.00 / MBF
Pulpwood		
Balsam Fir	138 Cords	\$ 7.50 / Cord
Basswood	6 Cords	\$ 6.60 / Cord
Mixed Aspen	67 Cords	\$ 19.20 / Cord
Mixed Hardwood	2,544 Cords	\$ 12.55 / Cord
Paper Birch	132 Cords	\$ 3.75 / Cord
White Spruce	44 Cords	\$ 9.30 / Cord

* The total volume is statistically estimated within plus (+) or minus (-) 9.21 percent. There are an estimated 3,756 cords on this timber sale, plus or minus 346 cords at the 95% confidence level. The estimated units are final and not subject to adjustment. Prospective bidders are urged to examine this timber and to make their own estimates of quantity and quality.

BOND AND PAYMENT SCHEDULE:

1. A bond in the amount of \$6,192.00 to insure faithful performance of the conditions of the contract will be deposited by the successful bidder within 21 days of the sale award.
2. Cutting in any sale or unit without the required advance payment would be considered a trespass.
3. Total payment must be paid in advance or according to the following schedule :
 - (a) Ten percent (10%) of the sale value must be paid within 21 days of the sale award.
 - (b) The 10% down payment will be credited towards the first unit cut.
 - (c) Payment for each of the following units must be made before cutting begins in that unit:

<u>PAYMENT UNIT NUMBER</u>	<u>PERCENT OF TOTAL SALE VALUE</u>
01	8.9%
02	10.8%
03	23.0%
04	15.9%
05	17.8%
06	7.5%
07	8.5%
08	7.6%

4. If no cutting takes place, the 10% down payment will not be refunded.
5. Operations on the contract issued will terminate on 06/30/2028.

SALE STATISTICS

Volumes were calculated in cubic feet using the Michigan taper model. Cubic foot volume includes all wood inside bark for the product indicated. For display purposes, cubic feet were converted to cords and MBF using a simple conversion factor, e.g. 79 cubic feet per cord and 185 cubic feet per MBF. The cubic foot volumes are precise; the cords and MBF volumes are not. Cubic foot volume cannot be directly converted to cords or boards with precision.

SALE VOLUMES

The total estimated sale volume may not equal the sum of the species/products due to the nature of statistical calculations associated with double sampling methodology.

VOLUME			STATISTICAL RANGE IN CORDS	
TOTAL CUBIC FEET	TOTAL CORDS	PERCENT ERROR	MINIMUM	MAXIMUM
296,729	3,756	9.21%	3,410	4,102

VDU VOLUMES

A VDU is a Volume Determination Unit. Volumes and their associated statistics are calculated at the VDU level and summarized to the sale level. There is often a one to one relationship between a VDU and a Payment Unit, but not always, depending on the cruise design. Refer to the VDU TO PAYMENT UNIT table.

	VOLUME			RANGE IN CORDS	
VDU	TOTAL CUBIC FEET	TOTAL CORDS	PERCENT ERROR	MINIMUM	MAXIMUM
13	52,369	663	25.50%	494	832
23	118,393	1,499	13.17%	1,301	1,696
46	32,975	417	29.65%	294	541
50	92,992	1,177	16.84%	979	1,375
TOTAL:	296,729	3,756		3,068	4,445

VDU TO PAYMENT UNIT

When a VDU is associated with more than one Payment Unit (PU), the VDU volumes are assigned to the PU based on acres of the VDU within the PU.

VDU	VDU ACRES	PU	PU ACRES
TOTAL:			

DESCRIPTION OF TIMBER BY PAYMENT UNIT (PU)

PU	MARKET GROUP	PRODUCT	QUANTITY	UNIT	ACRES	ADVERTISE PRICE
1	Sugar Maple	Sawtimber	31.1	MBF	11.1	\$11,036.95
	Balsam Fir	Pulpwood	22	Cords		
	Mixed Aspen		4	Cords		
	<i>Quaking Aspen</i>		4	<i>Cords</i>		
	Mixed Hardwood		201	Cords		
	<i>Beech</i>		16	<i>Cords</i>		
	<i>Ironwood</i>		4	<i>Cords</i>		
	<i>Sugar Maple</i>		181	<i>Cords</i>		
2	Sugar Maple	Sawtimber	37.6	MBF	13.4	\$13,349.75
	Balsam Fir	Pulpwood	27	Cords		
	Mixed Aspen		5	Cords		
	<i>Quaking Aspen</i>		5	<i>Cords</i>		
	Mixed Hardwood		243	Cords		
	<i>Beech</i>		20	<i>Cords</i>		
	<i>Ironwood</i>		4	<i>Cords</i>		
	<i>Sugar Maple</i>		219	<i>Cords</i>		
3	Paper Birch	Sawtimber	3.8	MBF	19.0	\$28,520.15
	Red Maple		1.0	MBF		
	Sugar Maple		88.5	MBF		
	Yellow Birch		0.5	MBF		
	Balsam Fir	Pulpwood	2	Cords		
	Mixed Hardwood		372	Cords		
	<i>Beech</i>		6	<i>Cords</i>		
	<i>Red Maple</i>		1	<i>Cords</i>		
	<i>Sugar Maple</i>		363	<i>Cords</i>		
	<i>Yellow Birch</i>		2	<i>Cords</i>		
	Paper Birch		15	Cords		
4	Paper Birch	Sawtimber	2.6	MBF	13.1	\$19,672.10
	Red Maple		0.7	MBF		
	Sugar Maple		61.0	MBF		
	Yellow Birch		0.3	MBF		
	Balsam Fir	Pulpwood	1	Cords		
	Mixed Hardwood		258	Cords		
	<i>Beech</i>		4	<i>Cords</i>		
	<i>Red Maple</i>		1	<i>Cords</i>		
	<i>Sugar Maple</i>		251	<i>Cords</i>		
	<i>Yellow Birch</i>		2	<i>Cords</i>		
	Paper Birch		10	Cords		
5	Paper Birch	Sawtimber	3.0	MBF	14.7	\$22,094.40
	Red Maple		0.8	MBF		
	Sugar Maple		68.5	MBF		
	Yellow Birch		0.4	MBF		
	Balsam Fir	Pulpwood	2	Cords		
	Mixed Hardwood		289	Cords		
	<i>Beech</i>		5	<i>Cords</i>		
	<i>Red Maple</i>		1	<i>Cords</i>		
	<i>Sugar Maple</i>		281	<i>Cords</i>		
	<i>Yellow Birch</i>		2	<i>Cords</i>		
	Paper Birch		11	Cords		
6	Paper Birch	Sawtimber	3.0	MBF	12.7	\$9,235.00
	Red Maple		1.4	MBF		
	Sugar Maple		18.5	MBF		
	Balsam Fir	Pulpwood	18	Cords		
	Mixed Aspen		21	Cords		
	<i>Quaking Aspen</i>		21	<i>Cords</i>		
	Mixed Hardwood		265	Cords		

DESCRIPTION OF TIMBER BY PAYMENT UNIT (PU), CON'T

PU	MARKET GROUP	PRODUCT	QUANTITY	UNIT	ACRES	ADVERTISE PRICE
6 con't	<i>Beech</i>	<i>Pulpwood</i>	6	<i>Cords</i>		
	<i>Black Cherry</i>		4	<i>Cords</i>		
	<i>Red Maple</i>		23	<i>Cords</i>		
	<i>Sugar Maple</i>		228	<i>Cords</i>		
	<i>Yellow Birch</i>		4	<i>Cords</i>		
	Paper Birch		59	Cords		
7	Red Maple	Sawtimber	3.9	MBF	18.5	\$10,521.40
	Sugar Maple		11.8	MBF		
	Balsam Fir	Pulpwood	35	Cords		
	Basswood		3	Cords		
	Mixed Aspen		20	Cords		
	<i>Balsam Poplar</i>		8	<i>Cords</i>		
	<i>Quaking Aspen</i>		12	<i>Cords</i>		
	Mixed Hardwood		482	Cords		
	<i>Beech</i>		46	<i>Cords</i>		
	<i>Ironwood</i>		11	<i>Cords</i>		
	<i>Red Maple</i>		64	<i>Cords</i>		
	<i>Sugar Maple</i>		354	<i>Cords</i>		
	<i>Yellow Birch</i>		7	<i>Cords</i>		
	Paper Birch		20	Cords		
	White Spruce		23	Cords		
8	Red Maple	Sawtimber	3.5	MBF	16.6	\$9,416.95
	Sugar Maple		10.5	MBF		
	Balsam Fir	Pulpwood	31	Cords		
	Basswood		3	Cords		
	Mixed Aspen		17	Cords		
	<i>Balsam Poplar</i>		7	<i>Cords</i>		
	<i>Quaking Aspen</i>		10	<i>Cords</i>		
	Mixed Hardwood		434	Cords		
	<i>Beech</i>		42	<i>Cords</i>		
	<i>Ironwood</i>		10	<i>Cords</i>		
	<i>Red Maple</i>		58	<i>Cords</i>		
	<i>Sugar Maple</i>		318	<i>Cords</i>		
	<i>Yellow Birch</i>		6	<i>Cords</i>		
	Paper Birch		17	Cords		
	White Spruce		21	Cords		
TOTAL:			352.4	MBF		
TOTAL:			2,931	Cords		

Sale Specific Conditions & Requirements

Sale Name: Green Maple Mix

Sale Number: 45-123-24 Seq#: 2

1 - Sale Area

1.2 - Boundaries

1.2.1 - Painted Boundaries (9/19)

The sale boundary and Payment Unit boundaries are marked and identified by blue, red and yellow paint. Exterior sale boundary lines against private property are marked with blue paint. Exterior sale boundary lines against state are marked with red paint. Interior Payment Unit boundaries are marked with yellow paint. Retention patches are marked with red paint; no harvesting activities may occur within these areas. Yellow painted trees designating an interior Payment Unit boundary are only to be cut when all surrounding Payment Units have been paid. Yellow painted trees with green are not allowed to be cut.

2 - Timber Specifications

2.1 - Included Timber

2.1.1 - Clearcut Unit(s) with Unmerchantable Trees (6/14)

Within Payment Unit(s) 6, cut all trees that are two (2) inches or more at DBH, except do not cut any hemlock or cedar unless necessary for operational purposes.

2.1.7 - Leave Tree Marked Unit(s) (6/14)

Within Payment Unit(s) 1-5 & 7-8, all trees which meet minimum piece specifications in 2.2 Utilization are designated for cutting, except do not cut trees marked with green paint above and below stump height. In addition, do not cut any cedar or hemlock except for operability.

3 - Payments

3.3 - Pre-measured Sales

3.3.4 - Dividing Payment Units (7/14)

Payment Unit(s) 1-8 may be divided at the request of the Purchaser and upon approval of the Unit Manager. Dividing Payment Units is a contract modification which requires a Timber Sale Contract Amendment. There will be only one division per Payment Unit.

4 - Transportation

4.1 - Construction

4.1.3 - Slash and Earthen Piles (8/04)

Piles or windrows of earth along roads and landings that have been widened or constructed shall be leveled. Slash from road maintenance or construction, including stumps, shall be dispersed throughout the sale.

4.1.4 - Timber Removed for Construction (3/23)

Trees cut or damaged in the process of pre-approved road, landing, or skid trail construction will be decked in an area separate from other Designated Timber and not removed until measured by the Sale Administrator. Payment will be made at contract prices or average prices, if not on the contract.

4.1.6 - Road Construction (4/24)

Construction of new roads or improvements of existing roads shall be done in such a way as to minimize the environmental and visual impacts. Merchantable trees shall be cut and utilized unless otherwise directed. Non-merchantable trees shall be severed and laid flat on the ground. Slash shall be scattered, and not left in windrows and kept a minimum of 10 feet back from the road edge. Stumps shall be set upright, not left on edge, and be moved at least 10 feet away from the road edge. Disturbed soil shall be feathered into the woods and not left in berms or windrows.

4.1.7 - Road Closure (10/11)

All new roads built into the sale must be blocked to vehicle traffic upon completion of the sale. Overgrown roads that are reopened shall be considered new roads. In general, this will require constructing a four (4') foot high berm of stumps and logs covered with earth. These roads must be rendered impassable to cars and trucks. Contact the Sale Administrator for

specific details of design and placement.

4.2 - Maintenance

4.2.1 - Hauling Restriction (12/08)

Hauling is restricted on Leveille Rd. The restriction may occur during spring breakup. Contact the Mackinac County Road Commission for the necessary permits.

4.2.3 - Road maintenance (8/13)

The following road maintenance is required: Within 60 days of completion of hauling, or if no hauling occurs for 60 days, the road must be maintained and graded. This includes cleaning of drainage areas, grading, crowning and filling with gravel, if necessary. Damages will be assessed if grading/repair does not occur.

4.2.5 - Two Wheel Drive Condition (2/04)

All existing trail roads on and adjacent to the Sale Area must be passable by two-wheel drive traffic for the duration of the sale.

4.4 - Access

4.4.2 - Alternate route on private property (2/04)

It is the Purchaser's responsibility to obtain access across private land for any routes other than the route shown on the Timber Sale Map.

5 - Operations

5.2 - Conduct of Operations

5.2.1 - Slash

5.2.1.11 - Slash for Reforestation (3/21)

To facilitate reforestation, Payment Units 1-5 & 7-8 shall be left with slash evenly distributed. Tops shall not be crushed or ran over unless in a main skid trail. Preferably, unbroken tops shall be left whole and intact, and placed within gaps created during harvesting operations.

5.2.2 - Hazard Trees/Snags

5.2.2.1 - Den Trees (10/16)

Obvious hollow and/or den trees shall be protected and left standing unless they are a safety hazard.

5.2.3 - Operating Restrictions

5.2.3.1 - Operating Restrictions (9/11)

Within Payment Unit(s) 1-8, unless changed by written agreement, cutting and skidding are limited to the period of December 1 to March 31. This restriction is because deer yard restrictions.

5.2.4 - Dead and Down Creation

5.2.4.3 - Dead and Down Creation, Dead Trees (6/07)

Except as provided for in General Condition and Requirement 5.2.2, no dead trees, standing or down, are to be cut, skidded, or processed.

5.2.32 - Decking/Landing Restoration (9/13)

All decking and landing areas must have the surface area restored to a condition equal to or better than before. This is to ensure the proper regeneration of the stand. Wood debris, chips and "cookies" from trimmings must be removed or scattered away from landing and loading areas and may not be windrowed on the edge.

5.2.38 - No Decking Against Live Trees (2/04)

Cut products may not be decked against unmarked or designated leave trees.

5.8 - Protection of Endangered Species

5.8.5 - Protection of Raptor Nests (3/13)

All trees with raptor nests will be protected if found during harvesting operations. Notification will be made to the Unit

Manager or his/her representative who will notify the Wildlife Biologist so an onsite evaluation and recommendation can be made, if necessary.

TIMBER SALE MAP

This information provided by authority of Part 525, 1994 PA 451, as amended.

Sale Number

45-123-24

Date

09/30/2024

Forest Management Unit

County

Mapped By: Plato

Scale

Page

Of

Sault Ste Marie Mgt Unit

Mackinac

Cruised By: Naubinway FO Staff

1:24,000**1****1**Township
42NRange
12WSection(s) and
Subdivision(s) Sec. 28 SW; Sec. 33 N1/2NW; Sec. 34 N1/2NE;**Cover Type**

A = Aspen	J = Jack Pine	O = Oak	U = Upland Brush
B = Paper Birch	K = Rock	P = Lowland Poplar	UM = Upland Mix Forest
C = Cedar	L = Lowland Brush	Q = Mixed Swamp Conifer	V = Bog or Marsh
D = Treed Bog	LM = Lowland Mix Forest	R = Red Pine	W = White Pine
E = Swamp Hardwoods	M = Maple, Beech, Birch	S = Black Spruce	X = Non Stocked
F = Spruce/Fir	MC = Mixed Conifer	T = Tamarack	Y = Sand
G = Grass	MD = Mixed Deciduous		Z = Water
H = Hemlock	N = Marsh		

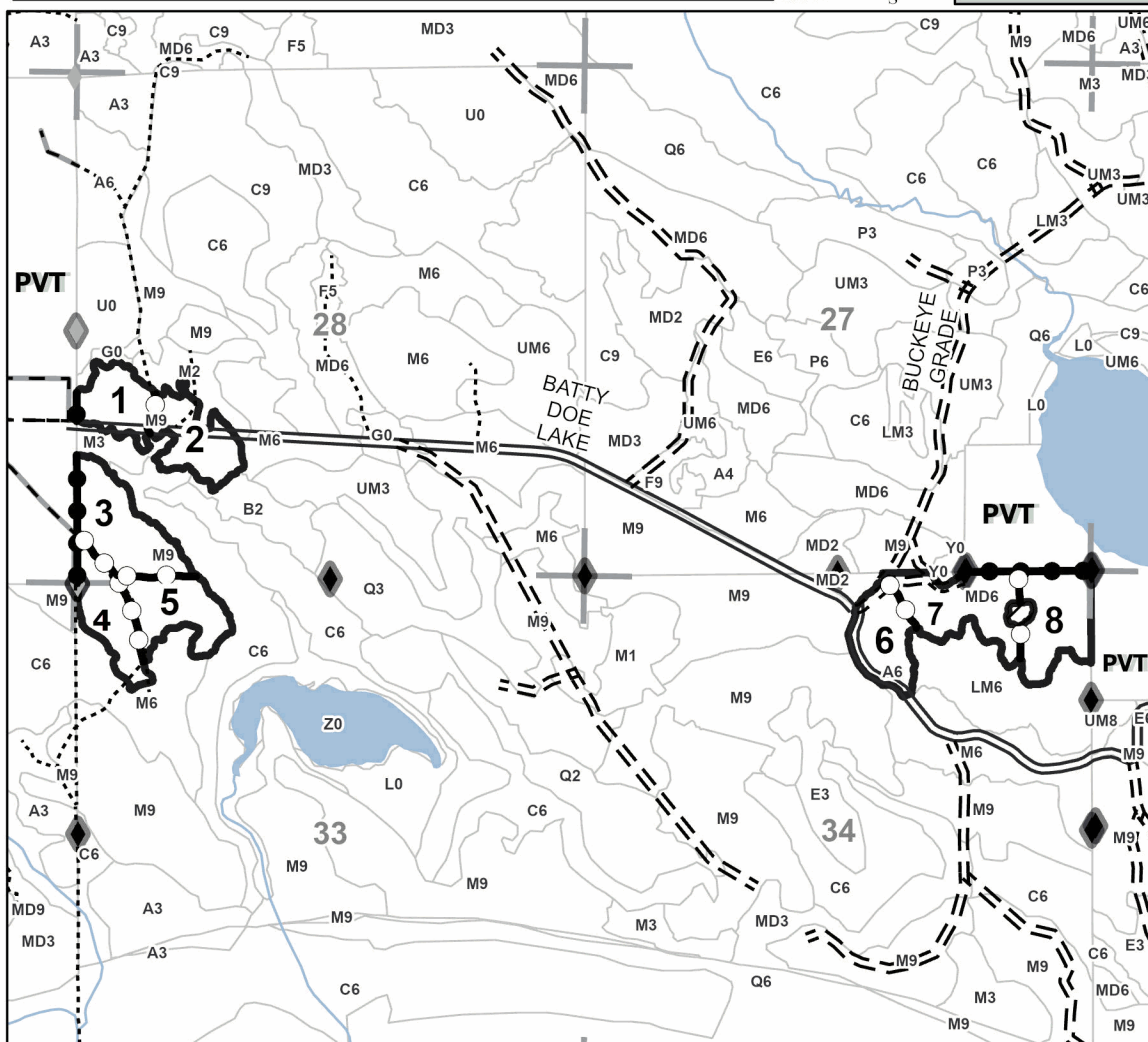
Density

0 = Non Stocked	5 = Pole Timber Medium
1 = Seedling Sapling Poor	6 = Pole Timber Well
2 = Seedling Sapling Medium	7 = Saw Timber Poor
3 = Seedling Sapling Well	8 = Saw Timber Medium
4 = Pole Timber Poor	9 = Saw Timber Well

Locator Map (1:200,000)**Green Maple Mix****119.1 Acres**

PU #	Acres	PU #	Acres
1	11.1	5	14.7
2	13.4	6	12.7
3	19	7	18.5
4	13.1	8	16.6

0 0.38 0.75 1.5 Miles

**Legend**

- Against State (Red)
- Stand
- Payment Unit (Yellow)
- Private Line (Blue)
- Paved Road
- Gravel Road
- County Road - Seasonal
- Private Road
- Primary Forest Road
- Forest Access Route
- Administrative Access Only
- Paved Road
- Government Gravel/Dirt
- Private Gravel/Dirt
- Field Grade Corner
- Survey Grade Corner
- Section Corners
- Retention Areas

Use QR Code to open Map in App



Green Maple Mix (45-123-24)

T42N, R12W, SEC. 28; T42N, R12W, SEC. 33; T42N, R12W, SEC. 34; Mackinac

In response to the notice of sale to be held 3:00 p.m. (local time) on August 19, 2025, I am hereby submitting my sealed bid (firm offer) for the following forest products to be cut. Bids for individual species must be at or above the advertised price. All non-responsive bid forms may be rejected.

<u>PRODUCTS & SPECIES</u>	<u>ESTIMATED VOLUME*</u>	<u>ADVERTISED PRICE</u>	<u>BID PRICE/UNIT</u>
Sawtimber			
Paper Birch	12.4 MBF	\$ 31.00/MBF	\$ _____
Red Maple	11.3 MBF	\$ 97.00/MBF	\$ _____
Sugar Maple	327.5 MBF	\$ 266.00/MBF	\$ _____
Yellow Birch	1.2 MBF	\$ 49.00/MBF	\$ _____
Pulpwood			
Balsam Fir	138 Cords	\$ 7.50/Cord	\$ _____
Basswood	6 Cords	\$ 6.60/Cord	\$ _____
Mixed Aspen	67 Cords	\$ 19.20/Cord	\$ _____
Mixed Hardwood	2,544 Cords	\$ 12.55/Cord	\$ _____
Paper Birch	132 Cords	\$ 3.75/Cord	\$ _____
White Spruce	44 Cords	\$ 9.30/Cord	\$ _____

*The volumes are statistically estimated within plus (+) or minus (-) 9.21 percent at 95% confidence level. These estimated volumes are final and not subject to adjustment. Prospective bidders are urged to examine this timber and to make their own estimates of quantity and quality.

I understand that any or all bids may be rejected. All bids must be signed and all bid items must be bid or the bid form may be rejected. I also understand that consideration and awarding a contract will be based upon my past performance and ability to complete the contract based upon equipment and staffing subject to my control.

FEDERAL ID: ____ - ____ - ____ or SOCIAL SECURITY NUMBER: ____ - ____ - ____

Company or individual bidding: _____

Company representative's name: _____

Address: _____

City: _____ State: _____ Zip: _____

IF AVAILABLE, PLEASE PLACE THE PERSONALIZED LABEL FROM YOUR PROSPECTUS IN THE ABOVE BOX.

Individual or company representative's signature: _____ Date: _____

Phone number : _____ Email (optional): _____

**THE WINNING BIDDER MUST COMPLETE THE VERIFICATION OF WORKER'S DISABILITY COMPENSATION ACT
COMPLIANCE (ON REVERSE SIDE IF DOUBLE SIDED) WITHIN 21 DAYS OF SALE AWARD DATE**



TIMBER SALE VERIFICATION OF WORKER'S DISABILITY COMPENSATION ACT COMPLIANCE

As required by Act 317, P.A. 1969 (Worker's Compensation) and
Part 5 of Act 451 of 1994, as amended.

FOR DEPARTMENT USE ONLY

Sale Number (XX - XXX - XX - XX)

Forest Management Unit:

VERIFICATION OF WORKER'S DISABILITY COMPENSATION ACT COMPLIANCE

- This verification must be completed and submitted within 21 days of contract award and prior to the issuance of the timber sale contract.
- In addition, if boxes 2B or 2C are checked, then Notice of Exclusion or Certificate of Insurance must be submitted within twenty-one (21) days of the contract award and prior to the issuance of the timber sale contract.
- All Information must be typed or printed except for written signatures.

Please Check Appropriate Categories:

1. My business is organized as (you **must** check one of the boxes below):
 - A. ☐ Sole Proprietorship (individual)
 - B. ☐ Partnership
 - C. ☐ Corporation
2. You **must** check one of the boxes below:
 - A. ☐ I certify my business is a sole proprietorship and it has no employees but the sole proprietor. I am not subject to the Worker's Compensation Laws.
 - B. ☐ I certify my business has satisfied its obligation to the Worker's Compensation Act through the use of an approved Notice of Exclusion (BWC-337, Rev. 5/96). I will provide a copy of the Notice of Exclusion within 21 days of the contract award. (For questions or a copy of the BWC-337, please call the Worker's Compensation Bureau at 517-322-1195).
 - C. ☐ I certify my business has a Worker's Compensation Policy. I will provide an original Certificate of Insurance within twenty-one (21) days of the contract award.
3. If you have checked item 2(A) or 2(B), you **must** indicate the number of **both** full-time and part-time employees, other than yourself, including family members and active partners (if none, you must enter "0").

_____ Full-time Employees

_____ Part-time Employees

Name of Business		Federal ID (or) Social Security No.
Address		Telephone ()
City	State	ZIP

I hereby certify that the above information is true and correct. I agree to notify the Michigan DNR of any changes that occur in factors affecting my coverage during any of my present and future operations.

Signature of Owner or Authorized Representative

Title

Date

Please complete the "SEALED BID" information on the next page

Batty Doe Cedar Cut CRP (45-102-25)
T42N, R12W, SEC. 26; Mackinac COUNTY

In response to the notice of sale to be held 3:00 p.m. (local time) on August 19, 2025, I am hereby submitting my sealed bid (firm offer) for the following forest products to be cut. Bids for individual species must be at or above the advertised price. All non-responsive bid forms may be rejected.

<u>PRODUCTS & SPECIES</u>	<u>ESTIMATED VOLUME*</u>	<u>ADVERTISED PRICE</u>	<u>BID PRICE/UNIT</u>
Pulpwood			
Misc. Species 1	15.8 Acres	\$ 10.00/Acres	\$ _____

*These estimated volumes are final and not subject to adjustment. Prospective bidders are urged to examine this timber and to make their own estimates of quantity and quality.

I understand that any or all bids may be rejected. All bids must be signed and all bid items must be bid or the bid form may be rejected. I also understand that consideration and awarding a contract will be based upon my past performance and ability to complete the contract based upon equipment and staffing subject to my control.

FEDERAL ID: ____-____-____ or SOCIAL SECURITY NUMBER: ____-____-____

Company or individual bidding: _____

Company representative's name: _____

Address: _____

City: _____ State: _____ Zip: _____

IF AVAILABLE, PLEASE PLACE THE PERSONALIZED LABEL FROM YOUR PROSPECTUS IN THE ABOVE BOX.

Individual or company representative's signature: _____ Date: _____

Phone number : _____ Email (optional): _____

**THE WINNING BIDDER MUST COMPLETE THE VERIFICATION OF WORKER'S DISABILITY COMPENSATION ACT
COMPLIANCE (ON REVERSE SIDE IF DOUBLE SIDED) WITHIN 21 DAYS OF SALE AWARD DATE**



TIMBER SALE VERIFICATION OF WORKER'S DISABILITY COMPENSATION ACT COMPLIANCE

As required by Act 317, P.A. 1969 (Worker's Compensation) and
Part 5 of Act 451 of 1994, as amended.

FOR DEPARTMENT USE ONLY

Sale Number (XX - XXX - XX - XX)

Forest Management Unit:

VERIFICATION OF WORKER'S DISABILITY COMPENSATION ACT COMPLIANCE

- This verification must be completed and submitted within 21 days of contract award and prior to the issuance of the timber sale contract.
- In addition, if boxes 2B or 2C are checked, then Notice of Exclusion or Certificate of Insurance must be submitted within twenty-one (21) days of the contract award and prior to the issuance of the timber sale contract.
- All information must be typed or printed except for written signatures.

Please Check Appropriate Categories:

1. My business is organized as (you **must** check one of the boxes below):
 - A. ☐ Sole Proprietorship (individual)
 - B. ☐ Partnership
 - C. ☐ Corporation
2. You **must** check one of the boxes below:
 - A. ☐ I certify my business is a sole proprietorship and it has no employees but the sole proprietor. I am not subject to the Worker's Compensation Laws.
 - B. ☐ I certify my business has satisfied its obligation to the Worker's Compensation Act through the use of an approved Notice of Exclusion (BWC-337, Rev. 5/96). I will provide a copy of the Notice of Exclusion within 21 days of the contract award. (For questions or a copy of the BWC-337, please call the Worker's Compensation Bureau at 517-322-1195).
 - C. ☐ I certify my business has a Worker's Compensation Policy. I will provide an original Certificate of Insurance within twenty-one (21) days of the contract award.
3. If you have checked item 2(A) or 2(B), you **must** indicate the number of **both** full-time and part-time employees, other than yourself, including family members and active partners (if none, you must enter "0").

_____ Full-time Employees

_____ Part-time Employees

Name of Business		Federal ID (or) Social Security No.
Address		Telephone ()
City	State	ZIP

I hereby certify that the above information is true and correct. I agree to notify the Michigan DNR of any changes that occur in factors affecting my coverage during any of my present and future operations.

Signature of Owner or Authorized Representative

Title

Date

Please complete the "SEALED BID" information on the next page

Hog Island Cedar Cut CRP (45-103-25)
T43N, R07W, SEC. 7; Mackinac COUNTY

In response to the notice of sale to be held 3:00 p.m. (local time) on August 19, 2025, I am hereby submitting my sealed bid (firm offer) for the following forest products to be cut. Bids for individual species must be at or above the advertised price. All non-responsive bid forms may be rejected.

<u>PRODUCTS & SPECIES</u>	<u>ESTIMATED VOLUME*</u>	<u>ADVERTISED PRICE</u>	<u>BID PRICE/UNIT</u>
Pulpwood			
Misc. Species 1	14.2 Acres	\$ 10.00/Acres	\$ _____

*These estimated volumes are final and not subject to adjustment. Prospective bidders are urged to examine this timber and to make their own estimates of quantity and quality.

I understand that any or all bids may be rejected. All bids must be signed and all bid items must be bid or the bid form may be rejected. I also understand that consideration and awarding a contract will be based upon my past performance and ability to complete the contract based upon equipment and staffing subject to my control.

FEDERAL ID: ____-____-____ or SOCIAL SECURITY NUMBER: ____-____-____

Company or individual bidding: _____

Company representative's name: _____

Address: _____

City: _____ State: _____ Zip: _____

IF AVAILABLE, PLEASE PLACE THE PERSONALIZED LABEL FROM YOUR PROSPECTUS IN THE ABOVE BOX.

Individual or company representative's signature: _____ Date: _____

Phone number : _____ Email (optional): _____

**THE WINNING BIDDER MUST COMPLETE THE VERIFICATION OF WORKER'S DISABILITY COMPENSATION ACT
COMPLIANCE (ON REVERSE SIDE IF DOUBLE SIDED) WITHIN 21 DAYS OF SALE AWARD DATE**



TIMBER SALE
VERIFICATION OF WORKER'S DISABILITY
COMPENSATION ACT COMPLIANCE

*As required by Act 317, P.A. 1969 (Worker's Compensation) and
Part 5 of Act 451 of 1994, as amended.*

FOR DEPARTMENT USE ONLY

Sale Number (XX – XXX – XX – XX)

Forest Management Unit:

VERIFICATION OF WORKER'S DISABILITY COMPENSATION ACT COMPLIANCE

- This verification must be completed and submitted within 21 days of contract award and prior to the issuance of the timber sale contract.
- In addition, if boxes 2B or 2C are checked, then Notice of Exclusion or Certificate of Insurance must be submitted within twenty-one (21) days of the contract award and prior to the issuance of the timber sale contract.
- All information must be typed or printed except for written signatures.

Please Check Appropriate Categories:

1. My business is organized as (you **must** check one of the boxes below):
 - A. ☐ Sole Proprietorship (individual)
 - B. ☐ Partnership
 - C. ☐ Corporation
2. You **must** check one of the boxes below:
 - A. ☐ I certify my business is a sole proprietorship and it has no employees but the sole proprietor. I am not subject to the Worker's Compensation Laws.
 - B. ☐ I certify my business has satisfied its obligation to the Worker's Compensation Act through the use of an approved Notice of Exclusion (BWC-337, Rev. 5/96). I will provide a copy of the Notice of Exclusion within 21 days of the contract award. (For questions or a copy of the BWC-337, please call the Worker's Compensation Bureau at 517-322-1195).
 - C. ☐ I certify my business has a Worker's Compensation Policy. I will provide an original Certificate of Insurance within twenty-one (21) days of the contract award.
3. If you have checked item 2(A) or 2(B), you **must** indicate the number of **both** full-time and part-time employees, other than yourself, including family members and active partners (if none, you must enter "0").

_____ Full-time Employees

_____ Part-time Employees

Name of Business		Federal ID (or) Social Security No.
Address		Telephone ()
City	State	ZIP

I hereby certify that the above information is true and correct. I agree to notify the Michigan DNR of any changes that occur in factors affecting my coverage during any of my present and future operations.

Signature of Owner or Authorized Representative

Title

Date

Please complete the "SEALED BID" information on the next page