



**DEPARTMENT OF NATURAL RESOURCES  
STATE OF MICHIGAN  
TIMBER SALE PROSPECTUS #7617**

**SCHEDULED SALE DATE AND TIME: 3:00 p.m. (local time) on June 5, 2025.**

**LOCATION: NEWBERRY MGMT UNIT, 5666 S STATE HWY M 123, NEWBERRY, MI 49868.**

**PROSPECTUS NOTE:** All sales on this Prospectus were "no bid" sales on previous advertisements.

The bidder is advised to inspect the sale area and review the location, estimated volumes, operating costs and contract terms of proposed sales. Please be aware that some landowners may request 60 days or more notice for access across their land.

Notice is hereby given that bids will be received by the Unit Manager, NEWBERRY MANAGEMENT UNIT, for certain timber on the following described lands:

Camp Six Lowlands (42-002-24) / T46N, R10W, SEC. 18, SWNW, SW, W1/2SE.

Luce County, Advertised Price \$9,295.75, 61.4 Acres, Hardwood, Spruce/Fir/Tamarack.

SALE NOTE: This sale has been reduced due to "no bid" on previous advertisement.

Road construction may be needed. See Sale Spec 4.2.3 and 4.2.4 for additional information.

Within Payment Unit(s) 1, 2, 3, 4, and 5, harvesting is limited to the period of December 31 to April 1. because of the low ground nature of the sale.

Some roads or skid trails may require extra protection such as that afforded by timber mats, interlocking composite mats, or another approved system. See Sale Spec 5.2.17 for details.

Access is off of Camp Six Road.

Classe Spruce (42-004-24) / T46N, R12W, SEC. 31, E1/2SW, S1/2SE.

Luce County, Advertised Price \$2,230.75, 24.6 Acres, Spruce/Fir/Tamarack, White Pine.

SALE NOTE: This sale has been reduced, as it was a "no bid" sale on a previous advertisement.

Road work is required on this sale. See Sale Spec 4.1.8 for details.

No new roads will be permitted in the Sale Area other than the ice road leading into the sale from the highway. Skid trails will only be allowed.

Within Payment Unit(s) 1, harvesting is limited to frozen winter conditions (approximately December 1 to April 1) because of sensitive soil conditions.

Access may be through other public land.

LLBB (42-018-24) / T45N, R08W, SEC. 18, SENW,N1/2SW,SESW,NWSE,S1/2SE.

T45N, R08W, SEC. 19, N1/2NE.

T45N, R08W, SEC. 20, NWNW.

Luce County, Advertised Price \$11,924.70, 97.4 Acres, Spruce/Fir/Tamarack, Hardwood.

SALE NOTE: This sale has been reduced, as it was a "no bid" sale on a previous advertisement.

Roads may require the installation of culverts for cross drainage or at natural drainage-ways. See Sale Spec 4.1.5 for additional information.

The Purchaser will secure any necessary highway and culvert permits that may be required.

Within Payment Unit(s) 1-3, harvesting is limited to the period of December 31 to March 31.

Some roads or skid trails may require extra protection such as that afforded by timber mats , interlocking composite mats, or another approved system. See Sale Spec 5.2.17 for details.

Colossus Mix (42-015-23) / T46N, R09W, SEC. 6 , N1/2SW,SESW,SE.

T46N, R09W, SEC. 7 , N1/2NE,N1/2SE.

T46N, R09W, SEC. 8 , NW,W1/2NE,SW,S1/2SE.

T46N, R10W, SEC. 1 , S1/2NE,SE.

T46N, R10W, SEC. 12, N1/2NE,SENE.

Luce County, Advertised Price \$69,570.05, 599.7 Acres, Hardwood, N White Cedar.

SALE NOTE: This sale has been reduced, as it was a "no bid" on a previous advertisement.

Payment Units 5 - 22 are optional to harvest (see spec 2.1.11 for details).

It is the Purchaser's responsibility to obtain access across private land for any routes other than the route shown on the Timber Sale Map.

Within Payment Unit(s) 1 - 23, harvesting is limited to the period of December 31 to March 31 because of the low ground nature of the sale.

A snowmobile trail is shown on the Timber Sale Map. See Sale Spec 5.2.41 for restrictions.

A recreation site such as a trail, pathway, or campground is within the sale area or the vicinity. Certain restrictions/specifications may be applicable including time restrictions. Access may be through private or other public land.

Witness Protection White Pine (42-022-23) / T48N, R10W, SEC. 31, NESW,N1/2SE.

Luce County, Advertised Price \$2,869.15, 28.4 Acres, White Pine, Spruce/Fir/Tamarack.

SALE NOTE: This sale has been reduced due to "no bid" on previous advertisements.

Note that Payment Unit 3 is optional to harvest due to potential access issues. Removing this Payment Unit is a contract modification which requires a Timber Sale Contract Amendment.

The county must be contacted prior to constructing any access roads leading from the county road R-O-W. This applies to Payment Unit 3 and County Road 407.

Permission for access across private land is the responsibility of the Purchaser.

Within Payment Unit(s) 1 - 3, harvesting is limited to periods of frozen conditions, typically from January to April, unless specified by sale administrators due to sensitive and wet soil conditions and/or the operability and creation of "ice roads" for the use of timber removal.

Access may be through private or other public land.

## BID INSTRUCTIONS (VER. 10/10/2022):

### 1. Scheduled Bid Location, Date, and Time (2/11)

Bids must be received by the Unit Manager, NEWBERRY OFFICE, 5666 S STATE HWY M 123, NEWBERRY, MI 49868, no later than 3:00 p.m. (local time) on June 5, 2025. For further information concerning this sale, contact Keith Magnusson at 906-291-0120 extension n/a.

### 2. Bidder's Qualifications (10/22)

If all or part of a timber sale was prepared by a private contractor, the contractor and that contractor's company are not permitted to bid on the timber sale. A person must be 18 years of age or older to purchase timber. Permanent employees of the Department of Natural Resources or members of their immediate household may not bid. Former employees, in the permanent or seasonal class, may not bid until 3 months after the last day of active duty. Bids will not be accepted from individuals or companies appearing on the DNR/FRD No-Bid List. This list contains the names of purchasers who previously failed to execute a contract within 21-days or who have a history of poor performance.

### 3. Preparation of Sealed Bids (5/16)

Bid Forms may be completed online thru Michigan DNR Timber Sale Online Bidding (OLB) at [www.michigan.gov/timberbidding](http://www.michigan.gov/timberbidding) or by completing the hardcopy Bid Form found in the Timber Sale Prospectus. Hardcopy Bid Forms shall be manually signed in ink. Registration in OLB is considered your 'signature' for all bids submitted thru that system. Bid prices must be entered for each species and product in the Bid Price column for all material subject to bidding and all fill-in blanks must be completed. If erasures or other changes appear on the hardcopy Bid Form, each erasure or change must be initialed by the person signing the bid.

### 4. Submission of Sealed Bids (5/16)

Bid forms may be obtained from the Unit Manager or thru OLB. Bids may be submitted hardcopy or thru OLB. All hardcopy bids must be submitted on the bid form and in an envelope clearly identified as described in this section. NOTE: Only one bid form per bid envelope. Sealed bids must be submitted to the Unit office designated in the prospectus and must be submitted at or prior to the time established in the prospectus. The envelope should show on the outside (a) the sale name or number and (b) the date and time of bid opening, as shown in the prospectus. Bids received after the time specified in the sale prospectus are late bids and will be rejected.

It is possible for a bidder to submit multiple bids on a single sale. For example, a bid may be submitted hardcopy and a bid may be submitted thru OLB. Or, two bidders from the same company could both submit bids on the same sale. If this were to happen, the State would accept all bids received and award the contract accordingly. All bidding and contractual requirements would apply to all bids received.

### 5. Public Opening of Sealed Bids (7/16)

If conditions permit, the sealed bids will be publicly opened and posted at the time and place set in the prospectus.

If a bidder, present at a bid opening, has submitted bids on more than one sale, that bidder may withdraw their unopened bid envelopes or announce the withdrawal of their online bid after being declared the successful bidder on one sale.

### 6. Award of Contract (1/11)

Award of the contract will be made to the Bidder whose bid, conforming to the prospectus, is most advantageous to the State of Michigan on the basis of total value at rates bid for the estimated quantities. The State reserves the right to reject any bid or waive any minor irregularity in bids received. A written award mailed (or otherwise furnished) to the successful Bidder shall be deemed to result in a binding contract without further action by either party.

### 7. Down Payment (1/11)

The Bidder to whom award is made must make a down payment within 21 days of the sale award. The amount of the down payment will be calculated as shown in the Bond and Payment Schedule of this prospectus. Only cash may be used to meet this requirement.

### 8. Performance Security (1/11)

As guarantee of faithful performance, a cash bond, certificate of deposit, surety bond or irrevocable letter of credit (LOC) is required within 21 days of the sale award. The amount of the performance security is shown in the Bond and

Payment Schedule of this prospectus. If an LOC or surety is used, the coverage must extend for at least 6 months beyond the contract expiration.

#### 9. Worker's Compensation (10/22)

Purchaser shall obtain worker's compensation insurance to cover claims under Michigan's Worker's Disability Compensation Act of 1969 or similar employee benefit act of any other state applicable to an employee. Verification of Worker's Disability Compensation Act Compliance must be completed and submitted within 21 days of contract award and prior to the issuance of the timber sale contract. In addition, if applicable, Notice of Exclusion or Certificate of Insurance must also be submitted.

#### 10. Timber Sale Contract (10/22)

Additional conditions and requirements common to all timber sales are listed on the timber sale contract (R4031) and are available on line at [www.michigan.gov/timber](http://www.michigan.gov/timber). Contact the Unit Manager for additional information or a sample contract. Within 21 days of the date of the award letter, the bidder must sign the contract and provide the required down payment, performance security, and verification of worker's disability compensation. The down payment and performance security shall be in accordance with the provisions of the timber sale contract, in the sums stated in this prospectus. If these actions are not taken, then the Bidder, the Bidder's corporation, and the corporation's principals may not be permitted to bid on State timber sales for a period of 3 months after the first offense, 6 months after the second offense, and 1 year after the third offense. An offense will only be counted against the Bidder for 5 years. In addition, the Bidder certifies that if awarded this contract, the Bidder will complete the timber sale contract in accordance with its terms and any modifications thereof including requirements to purchase, cut, and remove the included timber by the expiration date.

Payment Unit values in the State Forest Timber Sale Contract are calculated based on the advertised value of the Payment Unit as a percentage of the total advertised value of the contract. The advertised value of each Payment Unit is given in the Description of Timber by Payment Unit table on the Timber Sale Information page. For example, if the value of Payment Unit 1 is advertised as \$1,500 and the total Timber Sale value is advertised as \$10,000, the contract price for Payment Unit 1 will be 15% of the total bid price ( $\$1,500/\$10,000 * 100$ ).

#### 11. Disclaimer of Estimates and Bidder's Warranty of Inspection (10/22)

Before submitting this bid, the Bidder is advised and cautioned to inspect the sale area, review the requirements of the sale contract, and take other steps as may be reasonably necessary to ascertain the location, estimated volumes, construction estimates, and operating costs of the proposed sale. Failure to do so will not relieve the Bidder from responsibility for completing the contract.

The Bidder warrants that this bid is submitted solely on the basis of the Bidder's examination and inspection of the quality and quantity of the timber offered for sale and the Bidder's opinion of the value thereof and the costs of recovery. No reliance should be placed on the State of Michigan's estimates of timber quality, quantity or costs of recovery. Bidder further acknowledges that the State of Michigan: (i) expressly disclaims any warranty of fitness of timber for any purpose; (ii) offers this timber as is without any warranty of quality (merchantability) or quantity and (iii) expressly disclaims any warranty as to the quantity or quality of timber sold.

#### 12. Certification and Chain-of-Custody (10/22)

Unless otherwise indicated in the contract under section 7 – Other Conditions of the Sale Specific Conditions & Requirements, the area encompassed by this timber sale is certified to the standards of the Forest Stewardship Council (FSC) - Certificate #SCS-FM/COC-00090N and the Sustainable Forestry Initiative (SFI) - Certificate #NSF-SFIS-5Y031-SF5. Forest products from this sale may be delivered to the mill as "FSC 100% and / or SFI certified" as long as the contractor hauling the forest products is chain-of-custody (COC) certified or covered under a COC certificate from the destination mill. The purchaser is responsible for maintaining COC after leaving the sale area.

#### 13. Good Neighbor Authority (GNA) Requirements (10/22)

If the name of this timber sales contains the acronym GNA, it is authorized by the Good Neighbor Authority (GNA) and covered by various agreements between the U.S. Forest Service and the State. The timber sale occurs on federal land and the following conditions apply:

GNA contracts on US Forest Service land will not be awarded to purchasers on the Federal list of excluded parties. The System for Award Management (SAM) will be checked for active excluded parties prior to award of contract. In

addition, the Bidder to whom award is made must complete an Assurance Regarding Felony Conviction or Tax Delinquent Status for Corporate Applicants (AD-3031).

14. Good Neighbor Authority (GNA) Requirements, con't (10/22)

Bidder certifies, by signing this bid form, that to the best of Bidder's knowledge that the following representations are accurate and complete.

- a. That the Bidder and its principals are not presently debarred, suspended, proposed for debarment, declared ineligible, or voluntary excluded from timber sales (covered transactions) by any Federal department or agency.
- b. That the Bidder and its principals have not within a 3-year period preceding this bid been convicted of or had a civil judgment rendered against them for commission of fraud or a criminal offense in connection with obtaining , attempting to obtain, or performing a public (Federal, State, or local) transaction or contract under a public transaction; violation of Federal or State antitrust statutes or commission of embezzlement, theft, forgery, bribery, falsification or destruction of records, making false statements, or receiving stolen property.
- c. That the Bidder and its principals are not presently indicted for or otherwise criminally or civilly charged by a governmental entity (Federal, State, or local) with commission of any of the offenses enumerated in paragraph b of this certification.
- d. That the Bidder and its principals have not within a 3-year period preceding this bid had one or more public transactions (Federal, State, or local) terminated for breach or default of a timber or forest product contract.

Bidders that cannot certify this requirement, in whole or in part, shall submit an explanation with their bid.

Scott Bowen  
Director

## TIMBER SALE INFORMATION

Camp Six Lowlands (42-002-24)  
T46N, R10W, SEC. 18.  
Luce County (Advertised Price \$9,295.75)

SALE NOTE: This sale has been reduced due to "no bid" on previous advertisement.

Road construction may be needed. See Sale Spec 4.2.3 and 4.2.4 for additional information.

Within Payment Unit(s) 1, 2, 3, 4, and 5, harvesting is limited to the period of December 31 to April 1. because of the low ground nature of the sale.

Some roads or skid trails may require extra protection such as that afforded by timber mats, interlocking composite mats, or another approved system. See Sale Spec 5.2.17 for details.

Access is off of Camp Six Road.

A timber sale contract for this lump sum, sealed bid timber sale will be awarded to the responsible bidder offering the highest sealed bid price. All units of volume listed below were estimated using the Inventory Manager computer program and the new Michigan taper model. Bids must be at or above the following advertised price for each product and species:

<u>PRODUCTS &amp; SPECIES</u>	<u>ESTIMATED UNITS*</u>	<u>ADVERTISED PRICE</u>
Sawtimber		
Black Spruce	21.2 MBF	\$ 4.00 / MBF
N. White Cedar	9.3 MBF	\$ 13.00 / MBF
Paper Birch	24.3 MBF	\$ 27.00 / MBF
Red Maple	39.0 MBF	\$ 19.00 / MBF
Yellow Birch	11.0 MBF	\$ 41.00 / MBF
Pulpwood		
Balsam Fir	76 Cords	\$ 5.55 / Cord
Balsam Poplar	226 Cords	\$ 11.25 / Cord
Black Ash	21 Cords	\$ 6.55 / Cord
Black Cherry	2 Cords	\$ 6.55 / Cord
Black Spruce	44 Cords	\$ 3.85 / Cord
N. White Cedar	63 Cords	\$ 3.90 / Cord
Paper Birch	152 Cords	\$ 1.70 / Cord
Red Maple	463 Cords	\$ 6.55 / Cord
Tamarack	28 Cords	\$ 2.25 / Cord
White Spruce	30 Cords	\$ 3.85 / Cord
Yellow Birch	37 Cords	\$ 6.55 / Cord

\* The total volume is statistically estimated within plus (+) or minus (-) 34.39 percent. There are an estimated 1,433 cords on this timber sale, plus or minus 493 cords at the 95% confidence level. The estimated units are final and not subject to adjustment. Prospective bidders are urged to examine this timber and to make their own estimates of quantity and quality.

### **BOND AND PAYMENT SCHEDULE:**

1. A bond in the amount of \$465.00 to insure faithful performance of the conditions of the contract will be deposited by the successful bidder within 21 days of the sale award.
2. Cutting in any sale or unit without the required advance payment would be considered a trespass.
3. Total payment must be paid in advance or according to the following schedule:
  - (a) Ten percent (10%) of the sale value must be paid within 21 days of the sale award.
  - (b) The 10% down payment will be credited towards the first unit cut.
  - (c) Payment for each of the following units must be made before cutting begins in that unit:

<u>PAYMENT UNIT NUMBER</u>	<u>PERCENT OF TOTAL SALE VALUE</u>
01	4.9%
02	27.2%
03	33.3%
04	17.8%
05	16.8%

4. If no cutting takes place, the 10% down payment will not be refunded.
5. Operations on the contract issued will terminate on 06/30/2029.

## **SALE STATISTICS**

Volumes were calculated in cubic feet using the Michigan taper model. Cubic foot volume includes all wood inside bark for the product indicated. For display purposes, cubic feet were converted to cords and MBF using a simple conversion factor, e.g. 79 cubic feet per cord and 185 cubic feet per MBF. The cubic foot volumes are precise; the cords and MBF volumes are not. Cubic foot volume cannot be directly converted to cords or boards with precision.

## **SALE VOLUMES**

The total estimated sale volume may not equal the sum of the species/products due to the nature of statistical calculations associated with double sampling methodology.

VOLUME			STATISTICAL RANGE IN CORDS	
TOTAL CUBIC FEET	TOTAL CORDS	PERCENT ERROR	MINIMUM	MAXIMUM
113,186	1,433	34.39%	940	1,925

## **VDU VOLUMES**

A VDU is a Volume Determination Unit. Volumes and their associated statistics are calculated at the VDU level and summarized to the sale level. There is often a one to one relationship between a VDU and a Payment Unit, but not always, depending on the cruise design. Refer to the VDU TO PAYMENT UNIT table.

	VOLUME			RANGE IN CORDS	
VDU	TOTAL CUBIC FEET	TOTAL CORDS	PERCENT ERROR	MINIMUM	MAXIMUM
14	27,004	342	30.02%	239	444
18	40,771	516	21.78%	404	629
27	22,664	287	31.11%	198	376
28	17,736	225	65.32%	78	371
46	5,010	63	95.89%	3	124
<b>TOTAL:</b>	<b>113,186</b>	<b>1,433</b>		<b>921</b>	<b>1,944</b>

## **VDU TO PAYMENT UNIT**

When a VDU is associated with more than one Payment Unit (PU), the VDU volumes are assigned to the PU based on acres of the VDU within the PU.

VDU	VDU ACRES	PU	PU ACRES
14	13.4	2	13.4
18	23.1	3	23.1
27	15.1	4	15.1
28	6.6	5	6.6
46	3.2	1	3.2
<b>TOTAL:</b>	<b>61.4</b>		<b>61.4</b>



## DESCRIPTION OF TIMBER BY PAYMENT UNIT (PU)

PU	MARKET GROUP	PRODUCT	QUANTITY	UNIT	ACRES	ADVERTISE PRICE
1	Black Spruce	Sawtimber	1.5	MBF	3.2	\$455.50
	Paper Birch		1.7	MBF		
	Balsam Fir	Pulpwood	3	Cords		
	<i>Balsam Fir</i>		3	<i>Cords</i>		
	Balsam Poplar		22	Cords		
	Black Spruce		2	Cords		
	Paper Birch		12	Cords		
	Red Maple		17	Cords		
2	Black Spruce	Sawtimber	6.1	MBF	13.4	\$2,531.55
	Paper Birch		2.9	MBF		
	Red Maple		5.2	MBF		
	Balsam Fir	Pulpwood	15	Cords		
	<i>Balsam Fir</i>		15	<i>Cords</i>		
	Balsam Poplar		125	Cords		
	Black Ash		2	Cords		
	Black Spruce		6	Cords		
	Paper Birch		43	Cords		
	Red Maple		104	Cords		
	White Spruce		13	Cords		
	<i>White Spruce</i>		13	<i>Cords</i>		
3	Black Spruce	Sawtimber	1.3	MBF	23.1	\$3,098.15
	Paper Birch		19.7	MBF		
	Red Maple		14.8	MBF		
	Yellow Birch		9.1	MBF		
	Balsam Fir	Pulpwood	27	Cords		
	<i>Balsam Fir</i>	<i>Sawtimber</i>	2.2	<i>MBF</i>		
	<i>Balsam Fir</i>	<i>Pulpwood</i>	23	<i>Cords</i>		
	Balsam Poplar		11	Cords		
	Black Ash		11	Cords		
	Black Cherry		2	Cords		
	Black Spruce		11	Cords		
	Paper Birch		92	Cords		
	Red Maple		162	Cords		
	White Spruce		17	Cords		
	<i>White Spruce</i>	<i>Sawtimber</i>	4.3	<i>MBF</i>		
	<i>White Spruce</i>	<i>Pulpwood</i>	8	<i>Cords</i>		
4	Black Spruce	Sawtimber	7.8	MBF	15.1	\$1,650.35
	Red Maple		16.1	MBF		
	Black Ash	Pulpwood	8	Cords		
	Black Spruce		18	Cords		
	Paper Birch		5	Cords		
	Red Maple		171	Cords		
	Tamarack		28	Cords		
	<i>Tamarack</i>	<i>Sawtimber</i>	1.7	<i>MBF</i>		
	<i>Tamarack</i>	<i>Pulpwood</i>	25	<i>Cords</i>		
5	Black Spruce	Sawtimber	4.5	MBF	6.6	\$1,560.20
	N. White Cedar		9.3	MBF		
	Red Maple		2.9	MBF		
	Yellow Birch		1.9	MBF		
	Balsam Fir	Pulpwood	31	Cords		
	<i>Balsam Fir</i>	<i>Sawtimber</i>	0.8	<i>MBF</i>		
	<i>Balsam Fir</i>	<i>Pulpwood</i>	29	<i>Cords</i>		
	Balsam Poplar		68	Cords		
	Black Spruce		7	Cords		
	N. White Cedar		63	Cords		

DESCRIPTION OF TIMBER BY PAYMENT UNIT (PU), CON'T

PU	MARKET GROUP	PRODUCT	QUANTITY	UNIT	ACRES	ADVERTISE PRICE
5 con't	Red Maple	Pulpwood	9	Cords		
	Yellow Birch		3	Cords		
TOTAL:			104.8	MBF		
TOTAL:			1,142	Cords		

## **Sale Specific Conditions & Requirements**

**Sale Name: Camp Six Lowlands**

**Sale Number: 42-002-24 Seq#: 3**

### **1 - Sale Area**

#### **1.2 - Boundaries**

##### **1.2.1 - Painted Boundaries (9/19)**

The sale boundary and Payment Unit boundaries are marked and identified by red and yellow paint. Exterior sale boundary lines against state are marked with red paint. Interior Payment Unit boundaries are marked with yellow paint. Retention patches are marked with red paint; no harvesting activities may occur within these areas. The painted boundary line trees are not Included Timber and are to be protected unless marked with orange paint. Yellow painted trees designating an interior Payment Unit boundary are only to be cut when all surrounding Payment Units have been paid.

### **2 - Timber Specifications**

#### **2.1 - Included Timber**

##### **2.1.2 - Clearcut Unit(s) w/o Unmerchantable Trees (8/11)**

Within Payment Unit(s) 1-5, cut all trees which meet minimum piece specifications in 2.2 Utilization, except in Units 2-4, do not cut any Cedar. In Units 1-5 do not cut any Hemlock

Also, within Unit 5, do not cut any trees ringed with green paint.

Special protection trees identified in accordance with condition 3.4.2, within clearcutting unit boundaries, are not Included Timber and are to be protected.

#### **2.2 - Utilization**

##### **2.2.9 - No Chipping Permitted (12/08)**

Within Payment Unit(s) #'s 1, 2, 3, 4, and 5, all wood must be removed by whole tree, tree segment, or roundwood. No chipping is permitted.

### **3 - Payments**

#### **3.3 - Pre-measured Sales**

##### **3.3.4 - Dividing Payment Units (7/14)**

Payment Unit(s) 2 and 3 may be divided at the request of the Purchaser and upon approval of the Unit Manager. Dividing Payment Units is a contract modification which requires a Timber Sale Contract Amendment. There will be only one division per Payment Unit.

#### **3.4 - Damaged Timber**

##### **3.4.2 - Special Protection Trees (4/14)**

The Purchaser shall not cut live or dead special protection trees within cutting units or clearings. Special protection trees are marked with green paint. If the Purchaser's operations have cut or damaged special protection trees through carelessness, the Purchaser shall pay double stumpage as fixed, agreed and liquidated damages for each special protection tree cut or damaged. Such payment does not constitute ownership of the undesignated timber.

### **4 - Transportation**

#### **4.1 - Construction**

##### **4.1.4 - Timber Removed for Construction (3/23)**

Trees cut or damaged in the process of pre-approved road, landing, or skid trail construction will be decked in an area separate from other Designated Timber and not removed until measured by the Sale Administrator. Payment will be made at contract prices or average prices, if not on the contract.

##### **4.1.6 - Road Construction (4/24)**

Construction of new roads or improvements of existing roads shall be done in such a way as to minimize the environmental and visual impacts. Merchantable trees shall be cut and utilized unless otherwise directed. Non-merchantable trees shall be severed and laid flat on the ground. Slash shall be scattered, not left in windrows, and kept a minimum of 10 feet back from the road edge. be chipped, utilized, or otherwise removed from the sale. Stumps shall be set upright, not left on edge, and be moved at least 10 feet away from the road edge. Disturbed soil shall be feathered into the woods and not left in berms or windrows.

#### 4.1.7 - Road Closure (10/11)

All new roads built into the sale must be blocked to vehicle traffic within 30 days of completion of hauling. Overgrown roads that are reopened shall be considered new roads. In general, this will require constructing a four (4') foot high berm of stumps and logs covered with earth. Stumps and brush must be placed along the remainder of the trail. These roads must be rendered impassable to cars and trucks. All stumps from road building and landing construction must be reserved to block any newly constructed roads upon completion of the sale. These stumps must be scattered along the road system to prohibit vehicular movement. Contact the Sale Administrator for specific details of design and placement.

### 4.2 - Maintenance

#### 4.2.3 - Road maintenance (8/13)

The following road maintenance may be needed if conditions of the road deteriorate: cleaning of drainage areas, grading, crowning, and filling with gravel, if necessary. Damages will be assessed if grading/repair does not occur.

#### 4.2.4 - Grading (10/16)

For completion of the sale, state forest roads must be graded. In general, this will require a road grader or bulldozer to shape up the roads after forest products have been hauled off site. This includes cleaning of drainage areas, grading, crowning and filling with gravel, if necessary. The grading equipment to be used must be approved by the Unit Manager or his/her representative.

## 5 - Operations

### 5.2 - Conduct of Operations

#### 5.2.2 - Hazard Trees/Snags

##### 5.2.2.1 - Den Trees (10/16)

Obvious hollow and/or den trees shall be protected and left standing unless they are a safety hazard.

#### 5.2.3 - Operating Restrictions

##### 5.2.3.1 - Operating Restrictions (9/11)

Within Payment Unit(s) #'s 1, 2, 3, 4, and 5, unless changed by written agreement, cutting, skidding, and hauling are limited to the period of December 31 to April 1. This restriction is because of the low ground nature of the sale.

#### 5.2.17 - Timber Mats and Interlocking Composite Mats (5/23)

Some roads or skid trails may require extra protection such as that afforded by timber mats, interlocking composite mats, or another approved system. If available, mats may be borrowed from the DNR. A Timber Sale Contract Amendment will be used to document the Purchaser's use of the DNR's mats. Contact the Sale Administrator regarding availability and pick-up. Timber mats are available from various field offices. Composite mats are only available from the Grayling field office and the Marquette ICC. The Purchaser is responsible for picking up and hauling the mats to and from the site. The composite mats will require DNR staff onsite for installation and removal. Contact the Sale Administrator to schedule at least 30 days before desired install/removal date. All mats must be cleaned prior to drop off. This may include, but is not limited to, power washing and brushing to remove mud and debris. A charge of \$700.00 per timber mat and \$2,000.00 per composite mat will be assessed for all damaged or non-returned mats. Damage for the crane/timber mats is defined as three or more broken cants. Damage for the composite mats is defined as cracked or broken mats.

#### 5.2.32 - Decking/Landing Restoration (9/13)

All decking and landing areas must have the surface area restored to a condition equal to or better than before. This is to ensure the proper regeneration of the stand. Wood debris, chips and "cookies" from trimmings must be removed or scattered away from landing and loading areas and may not be windrowed on the edge.

#### 5.2.38 - No Decking Against Live Trees (2/04)

Cut products may not be decked against unmarked or designated leave trees.

### 5.3 - Stream Protection

#### 5.3.2 - Parking Equipment Near Water (10/23)

Within Payment Unit(s) 1 the parking of or storage of equipment is prohibited within 100 feet of water bodies or ground water supplies. All equipment, when not in use for harvest operations, must be parked a minimum of 100 feet away from water sources (streams, rivers, lakes, ponds, vernal pools, ground water sources) and 50 feet away from slopes leading to water sources and/or riparian areas. This restriction is for preventing unforeseen oil and/or fluid leaks from contaminating water bodies and/or ground water supplies.

### 5.4 - Soil Protection

#### 5.4.1 - Rutting Restriction, General (7/16)

Operations are to cease immediately if equipment and weather conditions result in rutting of roads which are 12 inches or greater in depth and 50 feet in length. The Unit Manager or his/her representative may restrict hauling and/or skidding if ruts exceed the specified depth. With the Unit Manager or his/her representative's approval, the Purchaser may return to the area when the risk of rutting has decreased.

### 5.8 - Protection of Endangered Species

#### 5.8.5 - Protection of Raptor Nests (3/13)

All trees with raptor nests will be protected if found during harvesting operations. Notification will be made to the Unit Manager or his/her representative who will notify the Wildlife Biologist so an onsite evaluation and recommendation can be made, if necessary.

## 6 - Safety and Fire Prevention

### 6.2 - Signing

#### 6.2.1 - Road Posting (10/20)

The Purchaser is responsible for posting and maintaining caution signs on Camp Six Road prior to beginning operations. The road must be posted at appropriate distances from the Sale Area to warn of logging activity and truck traffic. Signs must be removed when harvest operations are suspended or completed. The Purchaser will provide these signs.

## 7 - Other Conditions

### 7.2 - Extensions

#### 7.2.5 - Weather-Related Extension (1/13)

If weather conditions during the operating period of this contract prevent harvesting, this sale may qualify for a weather-related extension. If approved, the normal extension fee would be waived. To qualify, there must be a documented attempt each year to harvest in the difficult portion of the sale.

**TIMBER SALE MAP**

This information provided by authority of Part 525, 1994 PA 451, as amended.

Sale Number

**42-002-24**

Date

**03/05/2024**

Forest Management Unit

Newberry Mgt Unit

County

Luce

Mapped By: Matt Payment

Cruised By: River Valley Foresters LLC

Scale

**1:15,840**

Page

**1**

Of

**1**Township  
46NRange  
10WSection(s) and  
Subdivision(s) Sec. 18 SWNW,SW,W1/2SE;**Cover Type**

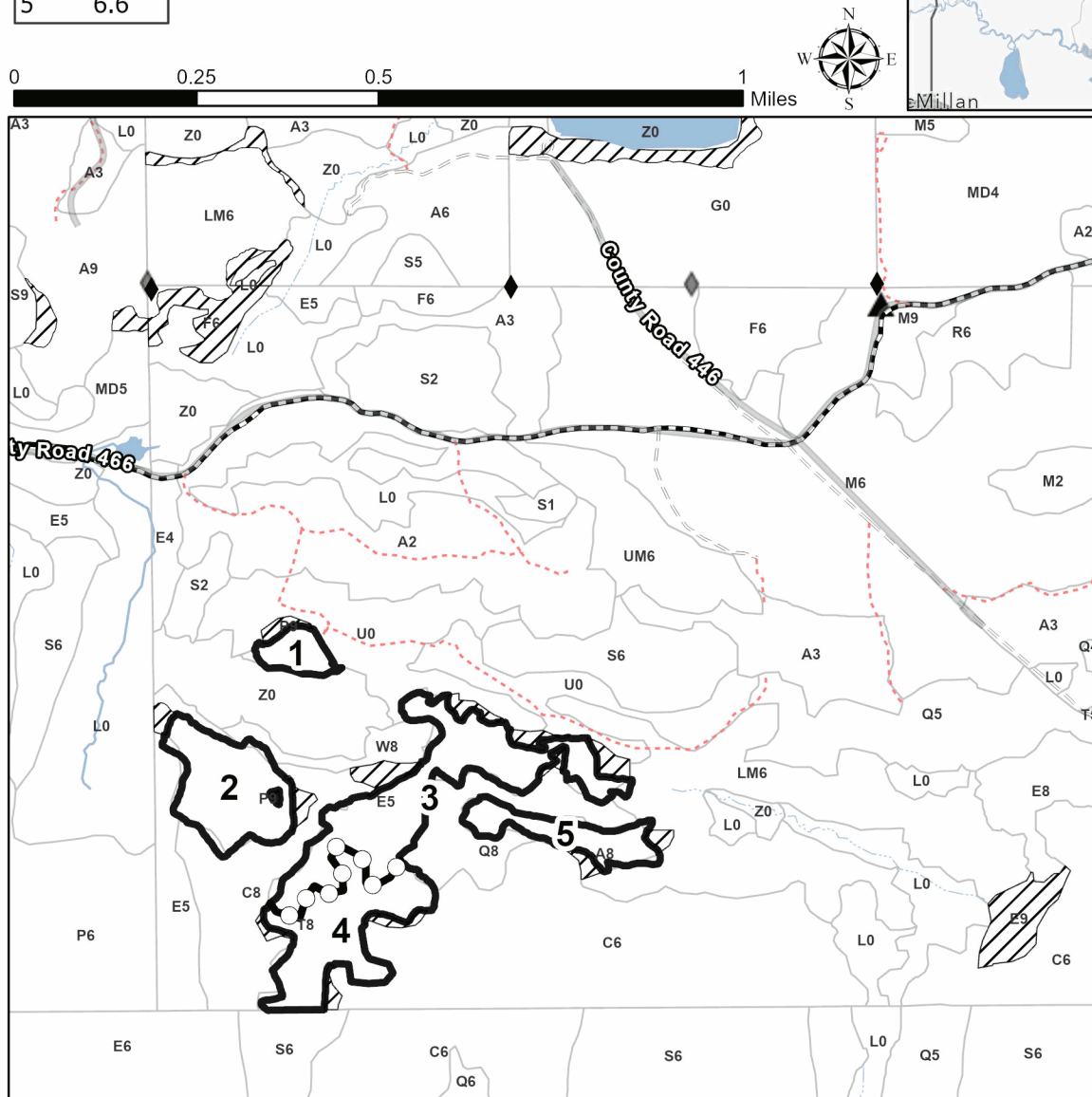
A = Aspen	J = Jack Pine	O = Oak	U = Upland Brush
B = Paper Birch	K = Rock	P = Lowland Poplar	UM = Upland Mix Forest
C = Cedar	L = Lowland Brush	Q = Mixed Swamp Conifer	V = Bog or Marsh
D = Treed Bog	LM = Lowland Mix Forest	R = Red Pine	W = White Pine
E = Swamp Hardwoods	M = Maple, Beech, Birch	S = Black Spruce	X = Non Stocked
F = Spruce/Fir	MC = Mixed Conifer	T = Tamarack	Y = Sand
G = Grass	MD = Mixed Deciduous	Z = Water	
H = Hemlock	N = Marsh		

**Density**

0 = Non Stocked	5 = Pole Timber Medium
1 = Seedling Sapling Poor	6 = Pole Timber Well
2 = Seedling Sapling Medium	7 = Saw Timber Poor
3 = Seedling Sapling Well	8 = Saw Timber Medium
4 = Pole Timber Poor	9 = Saw Timber Well

**Locator Map (1:200,000)****PU # Acres**

1	3.2
2	13.4
3	23.1
4	15.1
5	6.6

**Camp Six  
Lowlands****61.4 Acres****Legend**

- Payment Unit
- Stand
- Retention Areas
- Payment Unit (Yellow)
- Primary Forest Road
- Forest Access Route
- Administrative Access Only
- Field Grade Corner
- Survey Grade Corner
- Berm

Use QR Code to open Map in App



## TIMBER SALE INFORMATION

Classe Spruce (42-004-24)  
T46N, R12W, SEC. 31.  
Luce County (Advertised Price \$2,230.75)

SALE NOTE: This sale has been reduced, as it was a "no bid" sale on a previous advertisement.

Road work is required on this sale. See Sale Spec 4.1.8 for details.

No new roads will be permitted in the Sale Area other than the ice road leading into the sale from the highway. Skid trails will only be allowed.

Within Payment Unit(s) 1, harvesting is limited to frozen winter conditions (approximately December 1 to April 1) because of sensitive soil conditions.

Access may be through other public land.

A timber sale contract for this lump sum, sealed bid timber sale will be awarded to the responsible bidder offering the highest sealed bid price. All units of volume listed below were estimated using the Inventory Manager computer program and the new Michigan taper model. Bids must be at or above the following advertised price for each product and species:

<u>PRODUCTS &amp; SPECIES</u>	<u>ESTIMATED UNITS*</u>	<u>ADVERTISED PRICE</u>
Pulpwood		
Black Spruce	474 Cords	\$ 3.85 / Cord
Tamarack	41 Cords	\$ 2.25 / Cord
White Pine	28 Cords	\$ 11.20 / Cord

\* The total volume is statistically estimated within plus (+) or minus (-) 11.53 percent. There are an estimated 543 cords on this timber sale, plus or minus 63 cords at the 95% confidence level. The estimated units are final and not subject to adjustment. Prospective bidders are urged to examine this timber and to make their own estimates of quantity and quality.

### **BOND AND PAYMENT SCHEDULE:**

1. A bond in the amount of \$223.00 to insure faithful performance of the conditions of the contract will be deposited by the successful bidder within 21 days of the sale award.
  2. Cutting in any sale or unit without the required advance payment would be considered a trespass.
  3. Total payment must be paid in advance or according to the following schedule:
    - (a) Ten percent (10%) of the sale value must be paid within 21 days of the sale award.
    - (b) The remainder is due before cutting begins.
    - (c) Payment for each of the following units must be made before cutting begins in that unit:
- | PAYMENT UNIT NUMBER | PERCENT OF TOTAL SALE VALUE |
|---------------------|-----------------------------|
| 01                  | 100.0%                      |

4. If no cutting takes place, the 10% down payment will not be refunded.
5. Operations on the contract issued will terminate on 06/30/2029.

### **SALE STATISTICS**

Volumes were calculated in cubic feet using the Michigan taper model. Cubic foot volume includes all wood inside bark for the product indicated. For display purposes, cubic feet were converted to cords and MBF using a simple conversion factor, e.g. 79 cubic feet per cord and 185 cubic feet per MBF. The cubic foot volumes are precise; the cords and MBF volumes are not. Cubic foot volume cannot be directly converted to cords or boards with precision.

### **SALE VOLUMES**

The total estimated sale volume may not equal the sum of the species/products due to the nature of statistical calculations associated with double sampling methodology.

VOLUME		STATISTICAL RANGE IN CORDS		
TOTAL CUBIC FEET	TOTAL CORDS	PERCENT ERROR	MINIMUM	MAXIMUM
42,936	543	11.53%	481	606

VDU VOLUMES

A VDU is a Volume Determination Unit. Volumes and their associated statistics are calculated at the VDU level and summarized to the sale level. There is often a one to one relationship between a VDU and a Payment Unit, but not always, depending on the cruise design. Refer to the VDU TO PAYMENT UNIT table.

	VOLUME			RANGE IN CORDS	
VDU	TOTAL CUBIC FEET	TOTAL CORDS	PERCENT ERROR	MINIMUM	MAXIMUM
57	42,936	543	11.54%	481	606
TOTAL:	42,936	543		481	606

VDU TO PAYMENT UNIT

When a VDU is associated with more than one Payment Unit (PU), the VDU volumes are assigned to the PU based on acres of the VDU within the PU.

VDU	VDU ACRES	PU	PU ACRES
57	24.6	1	24.6
TOTAL:	24.6		24.6

DESCRIPTION OF TIMBER BY PAYMENT UNIT (PU)

PU	MARKET GROUP	PRODUCT	QUANTITY	UNIT	ACRES	ADVERTISE PRICE
1	Black Spruce	Pulpwood	474	Cords	24.6	\$2,230.75
	Tamarack		41	Cords		
	White Pine		28	Cords		
TOTAL:			543	Cords		



## **Sale Specific Conditions & Requirements**

**Sale Name: Classe Spruce**

**Sale Number: 42-004-24 Seq#: 2**

### **1 - Sale Area**

#### **1.2 - Boundaries**

##### **1.2.1 - Painted Boundaries (9/19)**

The sale boundary and Payment Unit boundaries are marked and identified by red paint. Exterior sale boundary lines against state are marked with red paint.

### **2 - Timber Specifications**

#### **2.1 - Included Timber**

##### **2.1.2 - Clearcut Unit(s) w/o Unmerchantable Trees (8/11)**

Within Payment Unit(s) 1, cut all trees which meet minimum piece specifications in 2.2 Utilization, except do not cut cedar.

### **4 - Transportation**

#### **4.1 - Construction**

##### **4.1.8 - Road Work (1) (8/07)**

The following road work is required: creation of an ice road that connects Sale Area to highway M28. It is recommended to form a single entry/exit road to minimize impact and conform with MDOT requirements. This will likely be approximately 150 feet in length, not including a landing area. Landing areas should also be constructed in such a way that there is minimal impact to the soil.

##### **4.1.11 - Permits (2/12)**

The DNR will secure any necessary MDOT highway permits that may be required.

##### **4.1.12 - No New Roads (1/12)**

No new roads will be permitted in the Sale Area other than the ice road leading into the sale from the highway. Skid trails will only be allowed.

### **5 - Operations**

#### **5.2 - Conduct of Operations**

##### **5.2.1 - Slash**

##### **5.2.1.13 - Dispose of Slash as Directed (12/05)**

Slash is to be disposed of as directed by the Sale Administrator. Generally, slash should be dispersed evenly throughout the Sale Area.

##### **5.2.3 - Operating Restrictions**

##### **5.2.3.1 - Operating Restrictions (9/11)**

Within Payment Unit(s) 1, unless changed by written agreement, cutting, skidding, and hauling are limited to frozen winter conditions (approximately December 1 to April 1). This restriction is because of sensitive soil conditions.

##### **5.2.32 - Decking/Landing Restoration (9/13)**

All decking and landing areas must have the surface area restored to a condition equal to or better than before. This is to ensure the proper regeneration of the stand.

#### **5.4 - Soil Protection**

##### **5.4.1 - Rutting Restriction, General (7/16)**

Operations are to cease immediately if equipment and weather conditions result in rutting of roads and/or skid trails which is 12 inches or greater in depth and 50 feet in length. The Unit Manager or his/her representative may restrict hauling and/or skidding if ruts exceed the specified depth. With the Unit Manager or his/her representative's approval, the Purchaser may return to the area when the risk of rutting has decreased.

#### 5.4.5 - Soil Caution (11/04)

Care must be taken to minimize soil damage due to the wet soils.

### 5.8 - Protection of Endangered Species

#### 5.8.5 - Protection of Raptor Nests (3/13)

All trees with raptor nests will be protected if found during harvesting operations. Notification will be made to the Unit Manager or his/her representative who will notify the Wildlife Biologist so an onsite evaluation and recommendation can be made, if necessary.

#### 5.8.8 - Protected Species, Other (2/12)

Within the Sale Area, the Brush footed-butterfly is found to be present in Sale Area. Timber should be harvested in the winter months.

## 7 - Other Conditions

### 7.2 - Extensions

#### 7.2.5 - Weather-Related Extension (1/13)

If weather conditions during the operating period of this contract prevent harvesting, this sale may qualify for a weather-related extension. If approved, the normal extension fee would be waived. To qualify, there must be a documented attempt each year to harvest in the difficult portion of the sale.



**TIMBER SALE MAP**

This information provided by authority of Part 525, 1994 PA 451, as amended.

Sale Number

42-004-24

Date

06/05/2024

Forest Management Unit

Newberry Mgt Unit

County

Luce

Mapped By: A. Ciaramitaro

Cruised By: Newberry Unit Staff

Scale

1:7,920

Page

1

Of

1

Township  
46N

Range  
12W

Section(s) and  
Subdivision(s)

Sec. 31 E1/2SW,S1/2SE;

**Cover Type**

A = Aspen	J = Jack Pine	O = Oak	U = Upland Brush
B = Paper Birch	K = Rock	P = Lowland Poplar	UM = Upland Mix Forest
C = Cedar	L = Lowland Brush	Q = Mixed Swamp Conifer	V = Bog or Marsh
D = Treed Bog	LM = Lowland Mix Forest	R = Red Pine	W = White Pine
E = Swamp Hardwoods	M = Maple, Beech, Birch	S = Black Spruce	X = Non Stocked
F = Spruce/Fir	MC = Mixed Conifer	T = Tamarack	Y = Sand
G = Grass	MD = Mixed Deciduous		Z = Water
H = Hemlock	N = Marsh		

**Density**

0 = Non Stocked	5 = Pole Timber Medium
1 = Seedling Sapling Poor	6 = Pole Timber Well
2 = Seedling Sapling Medium	7 = Saw Timber Poor
3 = Seedling Sapling Well	8 = Saw Timber Medium
4 = Pole Timber Poor	9 = Saw Timber Well

**Classe Spruce**

Compartment: 42098 Acres: 24.6

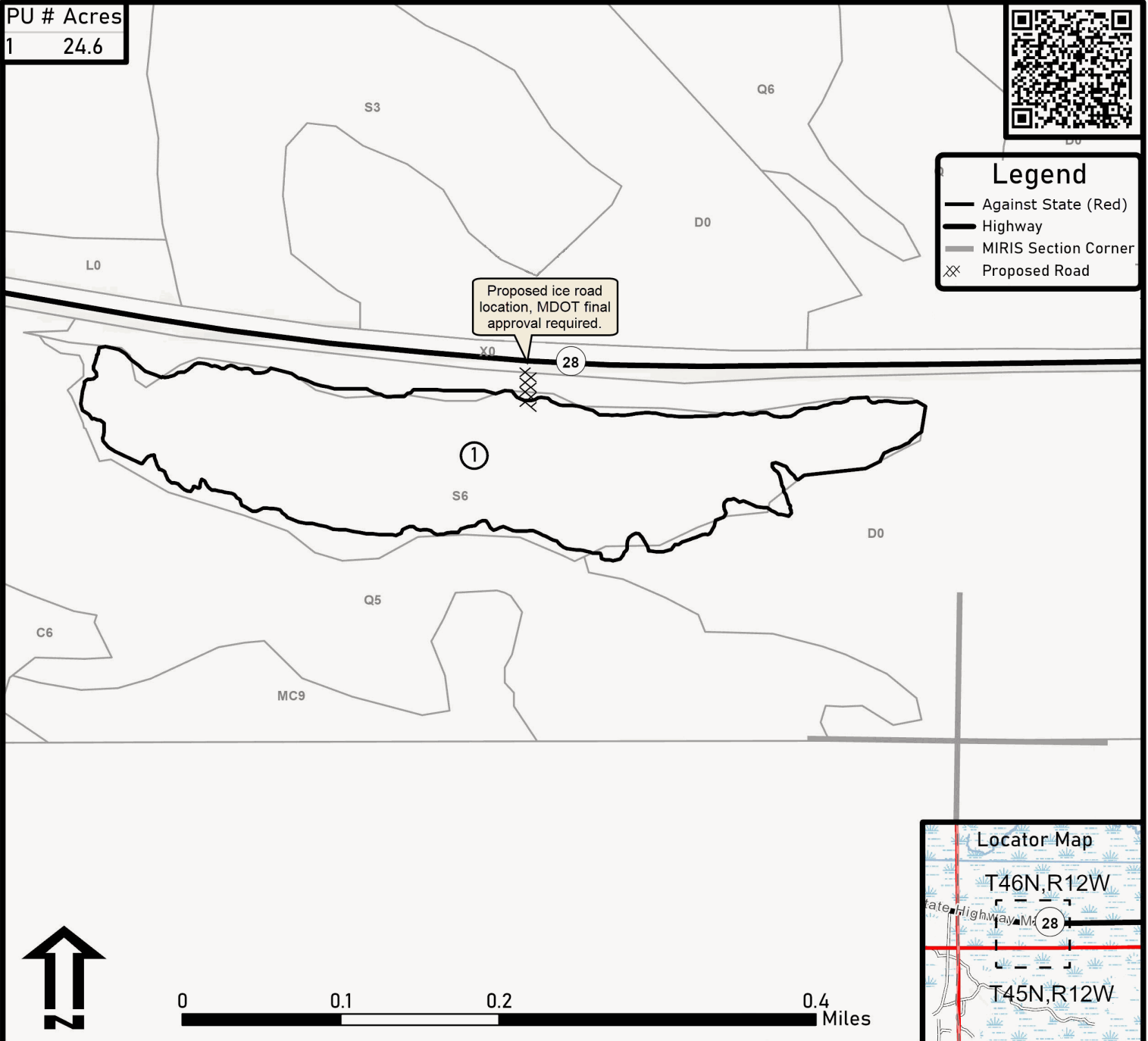
PU # Acres

1 24.6

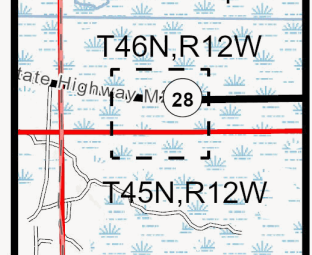


**Legend**

- Against State (Red)
- Highway
- MIRIS Section Corner
- XX Proposed Road



**Locator Map**





## TIMBER SALE INFORMATION

LLBB (42-018-24)

T45N, R08W, SEC. 18; T45N, R08W, SEC. 19; T45N, R08W, SEC. 20.  
Luce County (Advertised Price \$11,924.70)

SALE NOTE: This sale has been reduced, as it was a "no bid" sale on a previous advertisement.

Roads may require the installation of culverts for cross drainage or at natural drainage-ways. See Sale Spec 4.1.5 for additional information.

The Purchaser will secure any necessary highway and culvert permits that may be required.

Within Payment Unit(s) 1-3, harvesting is limited to the period of December 31 to March 31.

Some roads or skid trails may require extra protection such as that afforded by timber mats, interlocking composite mats, or another approved system. See Sale Spec 5.2.17 for details.

A timber sale contract for this lump sum, sealed bid timber sale will be awarded to the responsible bidder offering the highest sealed bid price. All units of volume listed below were estimated using the Inventory Manager computer program and the new Michigan taper model. Bids must be at or above the following advertised price for each product and species:

<u>PRODUCTS &amp; SPECIES</u>	<u>ESTIMATED UNITS*</u>	<u>ADVERTISED PRICE</u>
Sawtimber		
Red Maple	15.3 MBF	\$ 19.00 / MBF
Yellow Birch	0.6 MBF	\$ 41.00 / MBF
Pulpwood		
Balsam Fir	310 Cords	\$ 5.55 / Cord
Black Spruce	674 Cords	\$ 3.85 / Cord
Mixed Hardwood	520 Cords	\$ 6.55 / Cord
Quaking Aspen	328 Cords	\$ 11.25 / Cord
Tamarack	88 Cords	\$ 2.25 / Cord

\* The total volume is statistically estimated within plus (+) or minus (-) 14.10 percent. There are an estimated 1,957 cords on this timber sale, plus or minus 276 cords at the 95% confidence level. The estimated units are final and not subject to adjustment. Prospective bidders are urged to examine this timber and to make their own estimates of quantity and quality.

### **BOND AND PAYMENT SCHEDULE:**

1. A bond in the amount of \$596.00 to insure faithful performance of the conditions of the contract will be deposited by the successful bidder within 21 days of the sale award.
2. Cutting in any sale or unit without the required advance payment would be considered a trespass.
3. Total payment must be paid in advance or according to the following schedule:
  - (a) Ten percent (10%) of the sale value must be paid within 21 days of the sale award.
  - (b) The 10% down payment will be credited towards the first unit cut.
  - (c) Payment for each of the following units must be made before cutting begins in that unit:

PAYMENT UNIT NUMBER	PERCENT OF TOTAL SALE VALUE
01	31.6%
02	25.0%
03	43.4%

4. If no cutting takes place, the 10% down payment will not be refunded.

5. Operations on the contract issued will terminate on 06/30/2029.

### **SALE STATISTICS**

Volumes were calculated in cubic feet using the Michigan taper model. Cubic foot volume includes all wood inside bark for the product indicated. For display purposes, cubic feet were converted to cords and MBF using a simple conversion factor, e.g. 79 cubic feet per cord and 185 cubic feet per MBF. The cubic foot volumes are precise; the cords and MBF volumes are not. Cubic foot volume cannot be directly converted to cords or boards with precision.

SALE VOLUMES

The total estimated sale volume may not equal the sum of the species/products due to the nature of statistical calculations associated with double sampling methodology.

VOLUME			STATISTICAL RANGE IN CORDS	
TOTAL CUBIC FEET	TOTAL CORDS	PERCENT ERROR	MINIMUM	MAXIMUM
154,598	1,957	14.10%	1,681	2,233

VDU VOLUMES

A VDU is a Volume Determination Unit. Volumes and their associated statistics are calculated at the VDU level and summarized to the sale level. There is often a one to one relationship between a VDU and a Payment Unit, but not always, depending on the cruise design. Refer to the VDU TO PAYMENT UNIT table.

	VOLUME			RANGE IN CORDS	
VDU	TOTAL CUBIC FEET	TOTAL CORDS	PERCENT ERROR	MINIMUM	MAXIMUM
48	22,236	281	28.76%	201	362
54	82,124	1,040	20.64%	825	1,254
65	50,237	636	25.04%	477	795
TOTAL:	154,598	1,957		1,502	2,412

VDU TO PAYMENT UNIT

When a VDU is associated with more than one Payment Unit (PU), the VDU volumes are assigned to the PU based on acres of the VDU within the PU.

VDU	VDU ACRES	PU	PU ACRES
48	14.5	1	14.5
54	64.1	1	24.3
54	64.1	2	39.8
65	18.8	3	18.8
TOTAL:	161.5		97.4

**DESCRIPTION OF TIMBER BY PAYMENT UNIT (PU)**

PU	MARKET GROUP	PRODUCT	QUANTITY	UNIT	ACRES	ADVERTISE PRICE
1	Red Maple	Sawtimber	3.2	MBF	38.8	\$3,772.55
	Balsam Fir	Pulpwood	63	Cords		
	Black Spruce		258	Cords		
	Mixed Hardwood		261	Cords		
	<i>Paper Birch</i>		2	<i>Cords</i>		
	<i>Red Maple</i>		259	<i>Cords</i>		
	Quaking Aspen		52	Cords		
	Tamarack		33	Cords		
2	Red Maple	Sawtimber	0.6	MBF	39.8	\$2,983.55
	Balsam Fir	Pulpwood	57	Cords		
	Black Spruce		397	Cords		
	Mixed Hardwood		112	Cords		
	<i>Paper Birch</i>		2	<i>Cords</i>		
	<i>Red Maple</i>		110	<i>Cords</i>		
	Quaking Aspen		24	Cords		
	Tamarack		55	Cords		
3	Red Maple	Sawtimber	11.5	MBF	18.8	\$5,168.60
	Yellow Birch		0.6	MBF		
	Balsam Fir	Pulpwood	190	Cords		
	Black Spruce		19	Cords		
	Mixed Hardwood		147	Cords		
	<i>Ironwood</i>		1	<i>Cords</i>		
	<i>Paper Birch</i>		3	<i>Cords</i>		
	<i>Red Maple</i>		141	<i>Cords</i>		
	<i>Sugar Maple</i>		1	<i>Cords</i>		
	<i>Yellow Birch</i>		1	<i>Cords</i>		
	Quaking Aspen		252	Cords		
TOTAL:			15.9	MBF		
TOTAL:			1,920	Cords		

## **Sale Specific Conditions & Requirements**

**Sale Name: LLBB**

**Sale Number: 42-018-24 Seq#: 2**

### **1 - Sale Area**

#### **1.2 - Boundaries**

##### **1.2.1 - Painted Boundaries (9/19)**

The sale boundary and Payment Unit boundaries are marked and identified by blue, red and yellow paint. Exterior sale boundary lines against private property are marked with blue paint. Exterior sale boundary lines against state are marked with red paint. Interior Payment Unit boundary between payment Units 1 and 2 has not been painted. Avenza can be used to locate the line location by using the Timber Sale Map while harvesting or the line will be painted in upon request, if Avenza is not used. Retention patches are marked with red paint; no harvesting activities may occur within these areas. The painted boundary line trees are not Included Timber and are to be protected. Yellow painted trees designating an interior Payment Unit boundary are only to be cut when all surrounding Payment Units have been paid.

### **2 - Timber Specifications**

#### **2.1 - Included Timber**

##### **2.1.2 - Clearcut Unit(s) w/o Unmerchantable Trees (8/11)**

Within Payment Unit(s) 1-3, cut all trees which meet minimum piece specifications in 2.2 Utilization, except do not cut cedar, white pine, or hemlock. In addition, within Payment Units 1 and 2, do not cut yellow birch.

Do not cut dense sub-merchantable pockets of balsam fir in Payment Unit 3.

#### **2.2 - Utilization**

##### **2.2.9 - No Chipping Permitted (12/08)**

Within Payment Unit(s) 1-3, all wood must be removed by whole tree, tree segment, or roundwood. No chipping is permitted due to soil conditions and deer wintering habitat.

### **3 - Payments**

#### **3.3 - Pre-measured Sales**

##### **3.3.4 - Dividing Payment Units (7/14)**

Payment Unit(s) may be divided at the request of the Purchaser and upon approval of the Unit Manager. Dividing Payment Units is a contract modification which requires a Timber Sale Contract Amendment. There will be only one (1) division per Payment Unit. Payment Unit 1 and 2 are divided by an Avenza line and can be painted in if requested.

### **4 - Transportation**

#### **4.1 - Construction**

##### **4.1.4 - Timber Removed for Construction (3/23)**

Trees cut or damaged in the process of pre-approved road, landing, or skid trail construction will be decked in an area separate from other Designated Timber and not removed until measured by the Sale Administrator. Payment will be made at contract prices or average prices, if not on the contract.

##### **4.1.5 - Culverts (5/14)**

Roads may require the installation of culverts for cross drainage or at natural drainage-ways. If culverts are needed in these locations, their placement will be specified by the Sale Administrator, and they shall be installed prior to hauling. Culverts will be provided by the DNR. If culverts are removed, fill shall be removed from wetland soils as specified. Soils shall be maintained and left in a non-erodible condition, with water bars, seed, fertilizer, mulch, and slash installed as directed by the Sale Administrator and as specified in the BMP manual.

##### **4.1.6 - Road Construction (4/24)**

Construction of new roads or improvements of existing roads shall be done in such a way as to minimize the environmental and visual impacts. Merchantable trees shall be cut and utilized unless otherwise directed. Non-merchantable trees shall be



severed and laid flat on the ground. Slash shall be scattered, and not left in windrows and kept a minimum of 10 feet back from the road edge. Stumps shall be set upright, not left on edge, and be moved at least 10 feet away from the road edge. Disturbed soil shall be feathered into the woods and not left in berms or windrows.

#### 4.1.7 - Road Closure (10/11)

All new roads built into the sale must be blocked to vehicle traffic upon completion of the sale. Overgrown roads that are reopened shall be considered new roads. In general, this will require constructing a four (4') foot high berm of stumps and logs covered with earth. These roads must be rendered impassable to cars and trucks. Contact the Sale Administrator for specific details of design and placement.

#### 4.1.11 - Permits (2/12)

The Purchaser will secure any necessary highway and culvert permits that may be required.

### 4.2 - Maintenance

#### 4.2.1 - Hauling Restriction (12/08)

Hauling may be restricted on forest roads by the Unit Manager or his/her representative. The restriction may occur during wet weather conditions.

#### 4.2.2 - Fill Material (4/07)

To maintain roads, fill material may be needed in areas where "holes" exist or may be expected to develop. This fill material should be placed before trucking begins. Contact the Sale Administrator regarding the availability of onsite sand or gravel from adjacent State-owned lands.

### 4.4 - Access

#### 4.4.2 - Alternate route on private property (2/04)

It is the Purchaser's responsibility to obtain access across private land for any routes other than the route shown on the Timber Sale Map.

## 5 - Operations

### 5.2 - Conduct of Operations

#### 5.2.2 - Hazard Trees/Snags

##### 5.2.2.1 - Den Trees (10/16)

Obvious hollow and/or den trees shall be protected and left standing unless they are a safety hazard.

#### 5.2.3 - Operating Restrictions

##### 5.2.3.1 - Operating Restrictions (9/11)

Within Payment Unit(s) 1-3, unless changed by written agreement, cutting, skidding, and hauling are limited to the period of December 31 to March 31. This restriction is for frozen winter conditions.

#### 5.2.17 - Timber Mats and Interlocking Composite Mats (5/23)

Some roads or skid trails may require extra protection such as that afforded by timber mats, interlocking composite mats, or another approved system. If available, mats may be borrowed from the DNR. A Timber Sale Contract Amendment will be used to document the Purchaser's use of the DNR's mats. Contact the Sale Administrator regarding availability and pick-up. The Purchaser is responsible for picking up and hauling the mats to and from the site. All mats must be cleaned prior to drop off. This may include, but is not limited to, power washing and brushing to remove mud and debris. A charge of \$700.00 per timber mat and \$2,000.00 per composite mat will be assessed for all damaged or non-returned mats. Damage for the crane/timber mats is defined as three or more broken cants. Damage for the composite mats is defined as cracked or broken mats.

#### 5.2.38 - No Decking Against Live Trees (2/04)

Cut products may not be decked against unmarked or designated leave trees.

### 5.4 - Soil Protection

#### 5.4.1 - Rutting Restriction, General (7/16)

Operations are to cease immediately if equipment and weather conditions result in rutting of roads and/or skid trails which are

12 inches or greater in depth and 50 feet in length. The Unit Manager or his/her representative may restrict hauling and/or skidding if ruts exceed the specified depth. With the Unit Manager or his/her representative's approval, the Purchaser may return to the area when the risk of rutting has decreased.

#### 5.8 - Protection of Endangered Species

##### 5.8.5 - Protection of Raptor Nests (3/13)

All trees with raptor nests will be protected if found during harvesting operations. Notification will be made to the Unit Manager or his/her representative who will notify the Wildlife Biologist so an onsite evaluation and recommendation can be made, if necessary.

### 6 - Safety and Fire Prevention

#### 6.2 - Signing

##### 6.2.1 - Road Posting (10/20)

The Purchaser is responsible for posting and maintaining caution signs on County Road 393 (Borgstrom) or M28, whichever is used, prior to beginning operations. The road must be posted at appropriate distances from the Sale Area to warn of logging activity and truck traffic. Signs must be removed when harvest operations are suspended or completed. The Purchaser will provide these signs.

### 7 - Other Conditions

#### 7.2 - Extensions

##### 7.2.5 - Weather-Related Extension (1/13)

If weather conditions during the operating period of this contract prevent harvesting, this sale may qualify for a weather-related extension. If approved, the normal extension fee would be waived. To qualify, there must be a documented attempt each year to harvest in the difficult portion of the sale.



**TIMBER SALE MAP**

This information provided by authority of Part 525, 1994 PA 451, as amended.

Sale Number

42-018-24

Date

09/30/2024

Forest Management Unit

Newberry Mgt Unit

County

Luce

Mapped By: N Wheeler

Cruised By: Newberry Unit Staff

Scale

1:15,840

Page

1

Of

1

Township  
45N

Range  
08W

Section(s) and  
Subdivision(s)

Sec. 18 SENW,N1/2SW,SESW,NWSE,S1/2SE; Sec. 19 N1/2NE; Sec. 20 NWNW;

**Cover Type**

A = Aspen	J = Jack Pine	O = Oak	U = Upland Brush
B = Paper Birch	K = Rock	P = Lowland Poplar	UM = Upland Mix Forest
C = Cedar	L = Lowland Brush	Q = Mixed Swamp Conifer	V = Bog or Marsh
D = Treed Bog	LM = Lowland Mix Forest	R = Red Pine	W = White Pine
E = Swamp Hardwoods	M = Maple, Beech, Birch	S = Black Spruce	X = Non Stocked
F = Spruce/Fir	MC = Mixed Conifer	T = Tamarack	Y = Sand
G = Grass	MD = Mixed Deciduous	Z = Water	
H = Hemlock	N = Marsh		

**Density**

0 = Non Stocked	5 = Pole Timber Medium
1 = Seedling Sapling Poor	6 = Pole Timber Well
2 = Seedling Sapling Medium	7 = Saw Timber Poor
3 = Seedling Sapling Well	8 = Saw Timber Medium
4 = Pole Timber Poor	9 = Saw Timber Well

**LLBB**

Compartment: 42128 Acres: 97.4

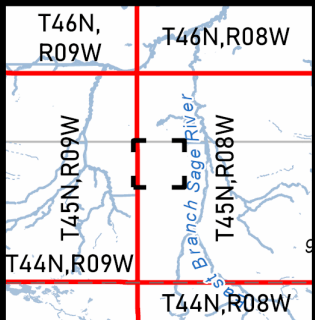
M28

PU #	Acres
1	38.9
2	39.8
3	18.7

**Legend**

- Payment Unit Red
- Private line Blue
- Temporary Management Access
- MIRIS Section Corner
- Perennial River
- Lakes and Rivers
- Retention Areas
- Forest Access Route
- Paved Road
- Private Road

**Locator Map**



0 0.13 0.25 0.5 Miles





## TIMBER SALE INFORMATION

### Colossus Mix (42-015-23)

T46N, R09W, SEC. 6; T46N, R09W, SEC. 7; T46N, R09W, SEC. 8; T46N, R10W, SEC. 1; T46N, R10W, SEC. 12.  
Luce County (Advertised Price \$69,570.05)

SALE NOTE: This sale has been reduced, as it was a "no bid" on a previous advertisement.

Payment Units 5 - 22 are optional to harvest (see spec 2.1. 11 for details).

It is the Purchaser's responsibility to obtain access across private land for any routes other than the route shown on the Timber Sale Map.

Within Payment Unit(s) 1 - 23, harvesting is limited to the period of December 31 to March 31 because of the low ground nature of the sale.

A snowmobile trail is shown on the Timber Sale Map. See Sale Spec 5.2.41 for restrictions.

A recreation site such as a trail, pathway, or campground is within the sale area or the vicinity. Certain restrictions/specifications may be applicable including time restrictions. Access may be through private or other public land.

A timber sale contract for this lump sum, sealed bid timber sale will be awarded to the responsible bidder offering the highest sealed bid price. All units of volume listed below were estimated using the Inventory Manager computer program and the new Michigan taper model. Bids must be at or above the following advertised price for each product and species:

<u>PRODUCTS &amp; SPECIES</u>	<u>ESTIMATED UNITS*</u>	<u>ADVERTISED PRICE</u>
Sawtimber		
Paper Birch	11.1 MBF	\$ 21.00 / MBF
Red Maple	23.8 MBF	\$ 15.00 / MBF
White Pine	244.8 MBF	\$ 24.00 / MBF
Pulpwood		
Balsam Fir	552 Cords	\$ 4.45 / Cord
Mixed Aspen	132 Cords	\$ 9.00 / Cord
Mixed Hardwood	6,842 Cords	\$ 5.25 / Cord
Mixed Spruce	1,650 Cords	\$ 3.10 / Cord
N. White Cedar	5,407 Cords	\$ 3.10 / Cord
Tamarack	223 Cords	\$ 5.05 / Cord
White Pine	60 Cords	\$ 8.95 / Cord

\* The total volume is statistically estimated within plus (+) or minus (-) 5.73 percent. There are an estimated 18,152 cords on this timber sale, plus or minus 1,041 cords at the 95% confidence level. The estimated units are final and not subject to adjustment. Prospective bidders are urged to examine this timber and to make their own estimates of quantity and quality.

### **BOND AND PAYMENT SCHEDULE:**

1. A bond in the amount of \$3,479.00 to insure faithful performance of the conditions of the contract will be deposited by the successful bidder within 21 days of the sale award.
2. Cutting in any sale or unit without the required advance payment would be considered a trespass.
3. Total payment must be paid in advance or according to the following schedule:
  - (a) Ten percent (10%) of the sale value must be paid within 21 days of the sale award.
  - (b) The 10% down payment will be credited towards the first unit cut.

(c) Payment for each of the following units must be made before cutting begins in that unit:

PAYMENT UNIT NUMBER	PERCENT OF TOTAL SALE VALUE
01	2.7%
02	4.2%
03	5.9%
04	2.8%
05	5.3%
06	4.8%
07	2.9%
08	5.2%
09	2.3%
10	0.9%
11	7.4%
12	6.5%
13	6.6%
14	4.3%
15	4.6%
16	6.6%
17	3.6%
18	5.0%
19	1.9%
20	3.6%
21	3.1%
22	2.9%
23	6.9%

4. If no cutting takes place, the 10% down payment will not be refunded.

5. Operations on the contract issued will terminate on 04/30/2030.

#### **SALE STATISTICS**

Volumes were calculated in cubic feet using the Michigan taper model. Cubic foot volume includes all wood inside bark for the product indicated. For display purposes, cubic feet were converted to cords and MBF using a simple conversion factor, e.g. 79 cubic feet per cord and 185 cubic feet per MBF. The cubic foot volumes are precise; the cords and MBF volumes are not. Cubic foot volume cannot be directly converted to cords or boards with precision.

#### **SALE VOLUMES**

The total estimated sale volume may not equal the sum of the species/products due to the nature of statistical calculations associated with double sampling methodology.

VOLUME			STATISTICAL RANGE IN CORDS	
TOTAL CUBIC FEET	TOTAL CORDS	PERCENT ERROR	MINIMUM	MAXIMUM
1,434,034	18,152	5.73%	17,112	19,193

## VDU VOLUMES

A VDU is a Volume Determination Unit. Volumes and their associated statistics are calculated at the VDU level and summarized to the sale level. There is often a one to one relationship between a VDU and a Payment Unit, but not always, depending on the cruise design. Refer to the VDU TO PAYMENT UNIT table.

	VOLUME			RANGE IN CORDS	
VDU	TOTAL CUBIC FEET	TOTAL CORDS	PERCENT ERROR	MINIMUM	MAXIMUM
1	28,551	361	33.97%	239	484
2	6,572	83	111.06%	0	176
3	6,334	80	46.08%	43	117
4	225,296	2,852	13.58%	2,465	3,239
5	678,709	8,591	8.35%	7,874	9,308
6	170,918	2,164	14.49%	1,850	2,477
46	13,920	176	88.11%	21	331
50	37,393	473	35.66%	305	642
56	55,249	699	19.51%	563	836
57	160,288	2,029	17.81%	1,668	2,390
64	20,455	259	55.91%	114	404
70	30,348	384	37.71%	239	529
<b>TOTAL:</b>	<b>1,434,034</b>	<b>18,152</b>		<b>15,380</b>	<b>20,934</b>

**VDU TO PAYMENT UNIT**

When a VDU is associated with more than one Payment Unit (PU), the VDU volumes are assigned to the PU based on acres of the VDU within the PU.

VDU	VDU ACRES	PU	PU ACRES
1	16.0	23	16.0
2	5.2	22	5.2
3	5.2	22	5.2
4	79.8	18	29.3
4	79.8	19	11.0
4	79.8	20	21.1
4	79.8	21	18.4
5	260.0	8	28.0
5	260.0	9	12.5
5	260.0	10	4.9
5	260.0	11	40.1
5	260.0	12	35.0
5	260.0	13	36.0
5	260.0	14	23.3
5	260.0	15	24.9
5	260.0	16	35.6
5	260.0	17	19.7
6	65.5	5	26.7
6	65.5	6	24.1
6	65.5	7	14.7
46	12.3	1	12.3
50	16.6	1	6.0
50	16.6	3	10.6
56	24.1	2	24.1
57	86.9	1	17.1
57	86.9	3	63.9
57	86.9	4	5.9
64	6.2	1	3.5
64	6.2	3	2.7
70	21.9	4	21.9
<b>TOTAL:</b>	<b>3,506.7</b>		<b>599.7</b>



## DESCRIPTION OF TIMBER BY PAYMENT UNIT (PU)

PU	MARKET GROUP	PRODUCT	QUANTITY	UNIT	ACRES	ADVERTISE PRICE
1	Paper Birch	Sawtimber	1.3	MBF	38.9	\$1,860.25
	Red Maple		3.9	MBF		
	Balsam Fir	Pulpwood	20	Cords		
	Mixed Aspen		51	Cords		
	<i>B. T. Aspen</i>		1	<i>Cords</i>		
	<i>Balsam Poplar</i>		2	<i>Cords</i>		
	<i>Quaking Aspen</i>		48	<i>Cords</i>		
	Mixed Hardwood		114	Cords		
	<i>Paper Birch</i>		57	<i>Cords</i>		
	<i>Red Maple</i>		57	<i>Cords</i>		
	Mixed Spruce		63	Cords		
	<i>Black Spruce</i>		40	<i>Cords</i>		
	<i>White Spruce</i>		23	<i>Cords</i>		
	N. White Cedar		63	Cords		
	Tamarack		47	Cords		
2	Paper Birch	Sawtimber	2.8	MBF	24.1	\$2,918.65
	Balsam Fir	Pulpwood	39	Cords		
	Mixed Hardwood		318	Cords		
	<i>Paper Birch</i>		252	<i>Cords</i>		
	<i>Red Maple</i>		66	<i>Cords</i>		
	N. White Cedar		328	Cords		
3	Paper Birch	Sawtimber	4.9	MBF	77.2	\$4,107.25
	Red Maple		10.8	MBF		
	Balsam Fir	Pulpwood	36	Cords		
	Mixed Aspen		11	Cords		
	<i>B. T. Aspen</i>		5	<i>Cords</i>		
	<i>Balsam Poplar</i>		6	<i>Cords</i>		
	Mixed Hardwood		333	Cords		
	<i>Paper Birch</i>		161	<i>Cords</i>		
	<i>Red Maple</i>		172	<i>Cords</i>		
	Mixed Spruce		217	Cords		
	<i>Black Spruce</i>		149	<i>Cords</i>		
	<i>White Spruce</i>		68	<i>Cords</i>		
	N. White Cedar		111	Cords		
	Tamarack		162	Cords		
4	Paper Birch	Sawtimber	2.1	MBF	27.8	\$1,954.85
	Red Maple		0.7	MBF		
	Mixed Aspen	Pulpwood	39	Cords		
	<i>Balsam Poplar</i>		1	<i>Cords</i>		
	<i>Quaking Aspen</i>		38	<i>Cords</i>		
	Mixed Hardwood		85	Cords		
	<i>Paper Birch</i>		73	<i>Cords</i>		
	<i>Red Maple</i>		12	<i>Cords</i>		
	Mixed Spruce		70	Cords		
	<i>Black Spruce</i>		64	<i>Cords</i>		
	<i>White Spruce</i>		6	<i>Cords</i>		
	N. White Cedar		263	Cords		
	Tamarack		14	Cords		
5	Balsam Fir	Pulpwood	21	Cords	26.7	\$3,681.40
	Mixed Hardwood		449	Cords		
	<i>Paper Birch</i>		121	<i>Cords</i>		
	<i>Red Maple</i>		328	<i>Cords</i>		
	Mixed Spruce		11	Cords		
	<i>Black Spruce</i>		11	<i>Cords</i>		
	N. White Cedar		386	Cords		
6	Balsam Fir	Pulpwood	19	Cords	24.1	\$3,325.85

**DESCRIPTION OF TIMBER BY PAYMENT UNIT (PU), CON'T**

PU	MARKET GROUP	PRODUCT	QUANTITY	UNIT	ACRES	ADVERTISE PRICE
6 con't	Mixed Hardwood	Pulpwood	406	Cords		
	<i>Paper Birch</i>		110	<i>Cords</i>		
	<i>Red Maple</i>		296	<i>Cords</i>		
	Mixed Spruce		10	Cords		
	<i>Black Spruce</i>		10	<i>Cords</i>		
	N. White Cedar		348	Cords		
7	Balsam Fir	Pulpwood	11	Cords	14.7	\$2,021.50
	Mixed Hardwood		247	Cords		
	<i>Paper Birch</i>		67	<i>Cords</i>		
	<i>Red Maple</i>		180	<i>Cords</i>		
	Mixed Spruce		6	Cords		
	<i>Black Spruce</i>		6	<i>Cords</i>		
	N. White Cedar		212	Cords		
8	Balsam Fir	Pulpwood	37	Cords	28.0	\$3,603.40
	Mixed Hardwood		407	Cords		
	<i>Black Ash</i>		6	<i>Cords</i>		
	<i>Paper Birch</i>		153	<i>Cords</i>		
	<i>Red Maple</i>		241	<i>Cords</i>		
	<i>Yellow Birch</i>		7	<i>Cords</i>		
	Mixed Spruce		103	Cords		
	<i>Black Spruce</i>		103	<i>Cords</i>		
	N. White Cedar		317	Cords		
9	Balsam Fir	Pulpwood	17	Cords	12.5	\$1,608.70
	Mixed Hardwood		181	Cords		
	<i>Black Ash</i>		3	<i>Cords</i>		
	<i>Paper Birch</i>		68	<i>Cords</i>		
	<i>Red Maple</i>		107	<i>Cords</i>		
	<i>Yellow Birch</i>		3	<i>Cords</i>		
	Mixed Spruce		46	Cords		
	<i>Black Spruce</i>		46	<i>Cords</i>		
	N. White Cedar		142	Cords		
10	Balsam Fir	Pulpwood	7	Cords	4.9	\$633.30
	Mixed Hardwood		71	Cords		
	<i>Black Ash</i>		1	<i>Cords</i>		
	<i>Paper Birch</i>		27	<i>Cords</i>		
	<i>Red Maple</i>		42	<i>Cords</i>		
	<i>Yellow Birch</i>		1	<i>Cords</i>		
	Mixed Spruce		18	Cords		
	<i>Black Spruce</i>		18	<i>Cords</i>		
	N. White Cedar		56	Cords		
11	Balsam Fir	Pulpwood	52	Cords	40.1	\$5,171.00
	Mixed Hardwood		586	Cords		
	<i>Black Ash</i>		9	<i>Cords</i>		
	<i>Paper Birch</i>		219	<i>Cords</i>		
	<i>Red Maple</i>		348	<i>Cords</i>		
	<i>Yellow Birch</i>		10	<i>Cords</i>		
	Mixed Spruce		148	Cords		
	<i>Black Spruce</i>		148	<i>Cords</i>		
	N. White Cedar		453	Cords		
12	Balsam Fir	Pulpwood	47	Cords	35.0	\$4,498.40
	Mixed Hardwood		507	Cords		
	<i>Black Ash</i>		7	<i>Cords</i>		
	<i>Paper Birch</i>		191	<i>Cords</i>		
	<i>Red Maple</i>		301	<i>Cords</i>		
	<i>Yellow Birch</i>		8	<i>Cords</i>		

**DESCRIPTION OF TIMBER BY PAYMENT UNIT (PU), CON'T**

PU	MARKET GROUP	PRODUCT	QUANTITY	UNIT	ACRES	ADVERTISE PRICE
12 con't	Mixed Spruce <i>Black Spruce</i> N. White Cedar	Pulpwood	129 129 396	Cords Cords Cords		
13	Balsam Fir Mixed Hardwood <i>Black Ash</i> <i>Paper Birch</i> <i>Red Maple</i> <i>Yellow Birch</i> Mixed Spruce <i>Black Spruce</i> N. White Cedar	Pulpwood	48 521 7 196 309 9 133 133 408	Cords Cords Cords Cords Cords Cords Cords Cords Cords	36.0	\$4,625.95
14	Balsam Fir Mixed Hardwood <i>Black Ash</i> <i>Paper Birch</i> <i>Red Maple</i> <i>Yellow Birch</i> Mixed Spruce <i>Black Spruce</i> N. White Cedar	Pulpwood	31 338 5 127 200 6 86 86 264	Cords Cords Cords Cords Cords Cords Cords Cords Cords	23.3	\$2,997.45
15	Balsam Fir Mixed Hardwood <i>Black Ash</i> <i>Paper Birch</i> <i>Red Maple</i> <i>Yellow Birch</i> Mixed Spruce <i>Black Spruce</i> N. White Cedar	Pulpwood	33 361 5 136 214 6 92 92 282	Cords Cords Cords Cords Cords Cords Cords Cords Cords	24.9	\$3,201.50
16	Balsam Fir Mixed Hardwood <i>Black Ash</i> <i>Paper Birch</i> <i>Red Maple</i> <i>Yellow Birch</i> Mixed Spruce <i>Black Spruce</i> N. White Cedar	Pulpwood	48 515 7 194 306 8 131 131 403	Cords Cords Cords Cords Cords Cords Cords Cords Cords	35.6	\$4,572.75
17	Balsam Fir Mixed Hardwood <i>Black Ash</i> <i>Paper Birch</i> <i>Red Maple</i> <i>Yellow Birch</i> Mixed Spruce <i>Black Spruce</i> N. White Cedar	Pulpwood	26 285 4 107 169 5 73 73 223	Cords Cords Cords Cords Cords Cords Cords Cords Cords	19.7	\$2,529.55
18	Red Maple Balsam Fir Mixed Hardwood <i>Paper Birch</i> <i>Red Maple</i> <i>Yellow Birch</i> Mixed Spruce	Sawtimber Pulpwood	3.1 20 406 82 312 12 113	MBF Cords Cords Cords Cords Cords Cords	29.3	\$3,472.90

**DESCRIPTION OF TIMBER BY PAYMENT UNIT (PU), CON'T**

PU	MARKET GROUP	PRODUCT	QUANTITY	UNIT	ACRES	ADVERTISE PRICE
18 con't	<i>Black Spruce</i> <i>White Spruce</i> N. White Cedar	<i>Pulpwood</i>	83 30 276	<i>Cords</i> <i>Cords</i> Cords		
19	Red Maple Balsam Fir Mixed Hardwood <i>Paper Birch</i> <i>Red Maple</i> <i>Yellow Birch</i> Mixed Spruce <i>Black Spruce</i> <i>White Spruce</i> N. White Cedar	Sawtimber Pulpwood	1.2 8 153 31 117 5 42 31 11 104	MBF Cords Cords <i>Cords</i> <i>Cords</i> <i>Cords</i> Cords <i>Cords</i> <i>Cords</i> Cords	11.0	\$1,309.45
20	Red Maple Balsam Fir Mixed Hardwood <i>Paper Birch</i> <i>Red Maple</i> <i>Yellow Birch</i> Mixed Spruce <i>Black Spruce</i> <i>White Spruce</i> N. White Cedar	Sawtimber Pulpwood	2.2 15 294 59 225 10 82 60 22 199	MBF Cords Cords <i>Cords</i> <i>Cords</i> <i>Cords</i> Cords <i>Cords</i> <i>Cords</i> Cords	21.1	\$2,514.35
21	Red Maple Balsam Fir Mixed Hardwood <i>Paper Birch</i> <i>Red Maple</i> <i>Yellow Birch</i> Mixed Spruce <i>Black Spruce</i> <i>White Spruce</i> N. White Cedar	Sawtimber Pulpwood	1.9 13 256 52 196 8 71 52 19 173	MBF Cords Cords <i>Cords</i> <i>Cords</i> <i>Cords</i> Cords <i>Cords</i> <i>Cords</i> Cords	18.4	\$2,186.75
22	White Pine Balsam Fir Mixed Aspen <i>B. T. Aspen</i> Mixed Hardwood <i>Paper Birch</i> <i>Red Maple</i> Mixed Spruce <i>Black Spruce</i> White Pine	Sawtimber Pulpwood	63.7 4 31 31 9 7 2 6 6 13	MBF Cords Cords <i>Cords</i> Cords <i>Cords</i> <i>Cords</i> Cords <i>Cords</i> Cords	10.4	\$2,007.80
23	White Pine White Pine	Sawtimber Pulpwood	181.1 47	MBF Cords	16.0	\$4,767.05
TOTAL:			279.7	MBF		
TOTAL:			14,866	Cords		

## **Sale Specific Conditions & Requirements**

**Sale Name: Colossus Mix**

**Sale Number: 42-015-23 Seq#: 3**

### **1 - Sale Area**

#### **1.2 - Boundaries**

##### **1.2.1 - Painted Boundaries (9/19)**

The sale boundary and Payment Unit boundaries are marked and identified by blue, red and yellow paint. Exterior sale boundary lines against private property are marked with blue paint. Exterior sale boundary lines against state are marked with red paint. Interior Payment Unit boundaries are marked with yellow paint. Retention patches are marked with red paint; no harvesting activities may occur within these areas. The painted boundary line trees are not Included Timber and are to be protected unless marked with orange paint. Yellow painted trees designating an interior Payment Unit boundary are only to be cut when all surrounding Payment Units have been paid.

### **2 - Timber Specifications**

#### **2.1 - Included Timber**

##### **2.1.2 - Clearcut Unit(s) w/o Unmerchantable Trees (8/11)**

Within Payment Unit(s) 1 - 21, cut all trees which meet minimum piece specifications in 2.2 Utilization, except do not cut any hemlock. In addition, the following exceptions apply:

- Within Payment Units 1 - 4, do not cut any white pine or yellow birch.
- Within Payment Units 5 - 13, do not cut white pine over 20 inches at DBH.
- Within Payment Units 14 - 19, do not cut any white pine.

##### **2.1.7 - Leave Tree Marked Unit(s) (6/14)**

Within Payment Unit(s) 22 and 23, all trees which meet minimum piece specifications in 2.2 Utilization are designated for cutting, except do not cut any hemlock or any trees marked with green paint above and below stump height.

##### **2.1.11 - Description of Timber Note (2/04)**

Note that Payment Units 5 - 22 are optional to harvest due to potential access issues. Removing any or all of these Payment Units is a contract modification which requires a Timber Sale Contract Amendment.

### **3 - Payments**

#### **3.3 - Pre-measured Sales**

##### **3.3.4 - Dividing Payment Units (7/14)**

Payment Unit(s) may be divided at the request of the Purchaser and upon approval of the Unit Manager. Dividing Payment Units is a contract modification which requires a Timber Sale Contract Amendment. There will be only one division per Payment Unit.

### **4 - Transportation**

#### **4.1 - Construction**

##### **4.1.4 - Timber Removed for Construction (3/23)**

Trees cut or damaged in the process of pre-approved road, landing, or skid trail construction will be decked in an area separate from other Designated Timber and not removed until measured by the Sale Administrator. Payment will be made at contract prices or average prices, if not on the contract.

##### **4.1.5 - Culverts (5/14)**

Roads may require the installation of culverts for cross drainage or at natural drainage-ways. If culverts are needed in these locations, their placement will be specified by the Sale Administrator, and they shall be installed prior to hauling. The culverts shall be new, corrugated metal or plastic gauge. Culverts will be a minimum of 12 inches in diameter and 24 feet in length. If culverts are removed, fill shall be removed from wetland soils as specified. Soils shall be maintained and left in a non-erodible condition, with water bars, seed, fertilizer, mulch, and slash installed as directed by the Sale Administrator and as specified in the BMP manual. Stream crossing permits, if needed, will be obtained by the DNR.

#### 4.1.6 - Road construction (1/09)

Construction of new roads or improvements of existing roads shall be done in such a way as to minimize the environmental and visual impacts. Merchantable trees shall be cut and utilized unless otherwise directed. Non-merchantable trees shall be severed and laid flat on the ground. Slash shall be scattered, and not left in windrows and kept a minimum of 10 feet back from the road edge. Stumps shall be set upright, not left on edge, and be moved at least 10 feet away from the road edge. Disturbed soil shall be feathered into the woods and not left in berms or windrows.

#### 4.1.7 - Road Closure (10/11)

All new roads built into the sale must be blocked to vehicle traffic upon completion of the sale. Overgrown roads that are reopened shall be considered new roads. In general, this will require constructing a four (4') foot high berm of stumps and logs covered with earth. These roads must be rendered impassable to cars and trucks. Contact the Sale Administrator for specific details of design and placement.

### 4.2 - Maintenance

#### 4.2.4 - Grading (10/16)

For completion of the sale, state forest roads must be graded. In general, this will require a road grader or bulldozer to shape up the roads after forest products have been hauled off site. This includes cleaning of drainage areas, grading, crowning and filling with gravel, if necessary. The grading equipment to be used must be approved by the Unit Manager or his/her representative.

### 4.4 - Access

#### 4.4.2 - Alternate route on private property (2/04)

It is the Purchaser's responsibility to obtain access across private land for any routes other than the route shown on the Timber Sale Map.

## 5 - Operations

### 5.1 - Notification

#### 5.1.1 - Pre-sale Conference (10/16)

A pre-sale conference on site between the Purchaser and Sale Administrator is required prior to beginning any operations to determine access, landing and road locations.

### 5.2 - Conduct of Operations

#### 5.2.1 - Slash

##### 5.2.1.8 - Slash Height (12/08)

No slash or tree tops may exceed 36 inches in height.

#### 5.2.2 - Hazard Trees/Snags

##### 5.2.2.1 - Den Trees (10/16)

Obvious hollow and/or den trees shall be protected and left standing unless they are a safety hazard.

#### 5.2.3 - Operating Restrictions

##### 5.2.3.1 - Operating Restrictions (9/11)

Within Payment Unit(s) 1 - 23, unless changed by written agreement, cutting and skidding are limited to the period of December 31 to March 31. This restriction is because of the low ground nature of the sale.

#### 5.2.4 - Dead and Down Creation

##### 5.2.4.6 - Dead and Down Creation, Other (9/09)

To create hare habitat, within Payment Units 5, 6, and 12-17, create 3-6 long linear brush piles that are 50 feet in length, at minimum. Brush piles will be created with stumps and larger unmerchantable woody material from within the Sale Area and formed into a line as a base. The brush pile should be a mix of logging slash piled on top of the base. If no unmerchantable products are available for a base, use whole trees 8-16 inches at DBH. Place tops onto the base along its length to construct a linear pile 6 feet in height. These piles should be scattered apart and located where the edge of

the harvest interfaces with adjacent uncut stands. Place brush piles perpendicular to the edge of the harvested stand, reaching into the adjacent stand at least 20 feet.

#### 5.2.17 - Timber Mats and Interlocking Composite Mats (10/20)

Some roads or skid trails require extra protection such as that afforded by interlocking composite mats or another approved system. If available, mats may be borrowed from the DNR. A Timber Sale Contract Amendment will be used to document the Purchaser's use of the DNR's mats. Contact the Sale Administrator regarding availability and pick-up. Composite mats are only available from the Grayling field office and the Marquette ICC. The Purchaser is responsible for picking up and hauling the mats to and from the site. The composite mats will require DNR staff onsite for installation and removal. Contact the Sale Administrator to schedule at least 30 days before desired install/removal date. All mats must be cleaned prior to drop off. This may include, but is not limited to, power washing and brushing to remove mud and debris. A charge of \$2,000.00 per composite mat will be assessed for all damaged or non-returned mats. Damage for the composite mats is defined as cracked or broken mats.

#### 5.2.32 - Decking/Landing Restoration (9/13)

All decking and landing areas must have the surface area restored to a condition equal to or better than before. This is to ensure the proper regeneration of the stand. Wood debris, chips and "cookies" from trimmings must be removed or scattered away from landing and loading areas and may not be windrowed on the edge.

#### 5.2.38 - No Decking Against Live Trees (2/04)

Cut products may not be decked against unmarked or designated leave trees.

#### 5.2.41 - Snowmobile Trail Protection (9/11)

The snowmobile trail is shown on the Timber Sale Map. Do not cut or damage posts with orange trail markers or traffic control signs. If the trail is used, it must be maintained and restored to a condition equal to or better than before the sale. If the trail road is to be used for hauling during the snowmobile season, then a snow covered base must be left on the trail.

### 5.4 - Soil Protection

#### 5.4.2 - Skid Trails (2/04)

Skid trails up and down slopes should be avoided. If, however, this is unavoidable, these trails will be left in a non-erodible condition using water bars, logs, and slash. Placing of slash on these skid trails while logging is ongoing may alleviate need for any further action. At the direction of the Sale Administrator, seed, fertilizer, and mulch may also be required.

### 5.8 - Protection of Endangered Species

#### 5.8.5 - Protection of Raptor Nests (3/13)

All trees with raptor nests will be protected if found during harvesting operations. Notification will be made to the Unit Manager or his/her representative who will notify the Wildlife Biologist so an onsite evaluation and recommendation can be made, if necessary.

## 6 - Safety and Fire Prevention

### 6.2 - Signing

#### 6.2.1 - Road Posting (10/20)

The Purchaser is responsible for posting and maintaining caution signs on the Charcoal Grade Road prior to beginning operations. The road must be posted at appropriate distances from the Sale Area to warn of logging activity and truck traffic. Signs must be removed when harvest operations are suspended or completed. The Purchaser will provide these signs.

#### 6.2.2 - Snowmobile Trail Posting (10/20)

The Purchaser is responsible for posting and maintaining caution signs on the Charcoal Grade Road prior to beginning operations during the snowmobile season (approximately December 1 to March 31). The trail must be posted at appropriate distances from the Sale Area to warn of logging activity and truck traffic. Signs must be removed when harvest operations are suspended or completed. The DNR will provide these signs.

## 7 - Other Conditions

### 7.2 - Extensions

#### 7.2.5 - Weather-Related Extension (1/13)

If weather conditions during the operating period of this contract prevent harvesting, this sale may qualify for a weather-related extension. If approved, the normal extension fee would be waived. To qualify, there must be a documented attempt each year to harvest in the difficult portion of the sale.





**TIMBER SALE MAP**

This information provided by authority of Part 525, 1994 PA 451, as amended.

Sale Number

42-015-23

Date

10/05/2023

Forest Management Unit  
**Newberry Mgt Unit**

County  
**Luce**

Mapped By: **A. Ciaramitaro**

Cruised By: **Newberry Unit Staff**

Scale

1:31,680

Page

1

Of

1

Township  
46N

Range  
09W / 10W

Section(s) and  
Subdivision(s)

Sec. 1 S1/2NE,SE; Sec. 12 N1/2NE,SENE; Sec. 6 N1/2SW,SESW,SE; Sec. 7 N1/2NE,N1/2SE;  
Sec. 8 NW,W1/2NE,SW,S1/2SE

**Cover Type**

A = Aspen	J = Jack Pine	O = Oak	U = Upland Brush
B = Paper Birch	K = Rock	P = Lowland Poplar	UM = Upland Mix Forest
C = Cedar	L = Lowland Brush	Q = Mixed Swamp Conifer	V = Bog or Marsh
D = Treed Bog	LM = Lowland Mix Forest	R = Red Pine	W = White Pine
E = Swamp Hardwoods	M = Maple, Beech, Birch	S = Black Spruce	X = Non Stocked
F = Spruce/Fir	MC = Mixed Conifer	T = Tamarack	Y = Sand
G = Grass	MD = Mixed Deciduous		Z = Water
H = Hemlock	N = Marsh		

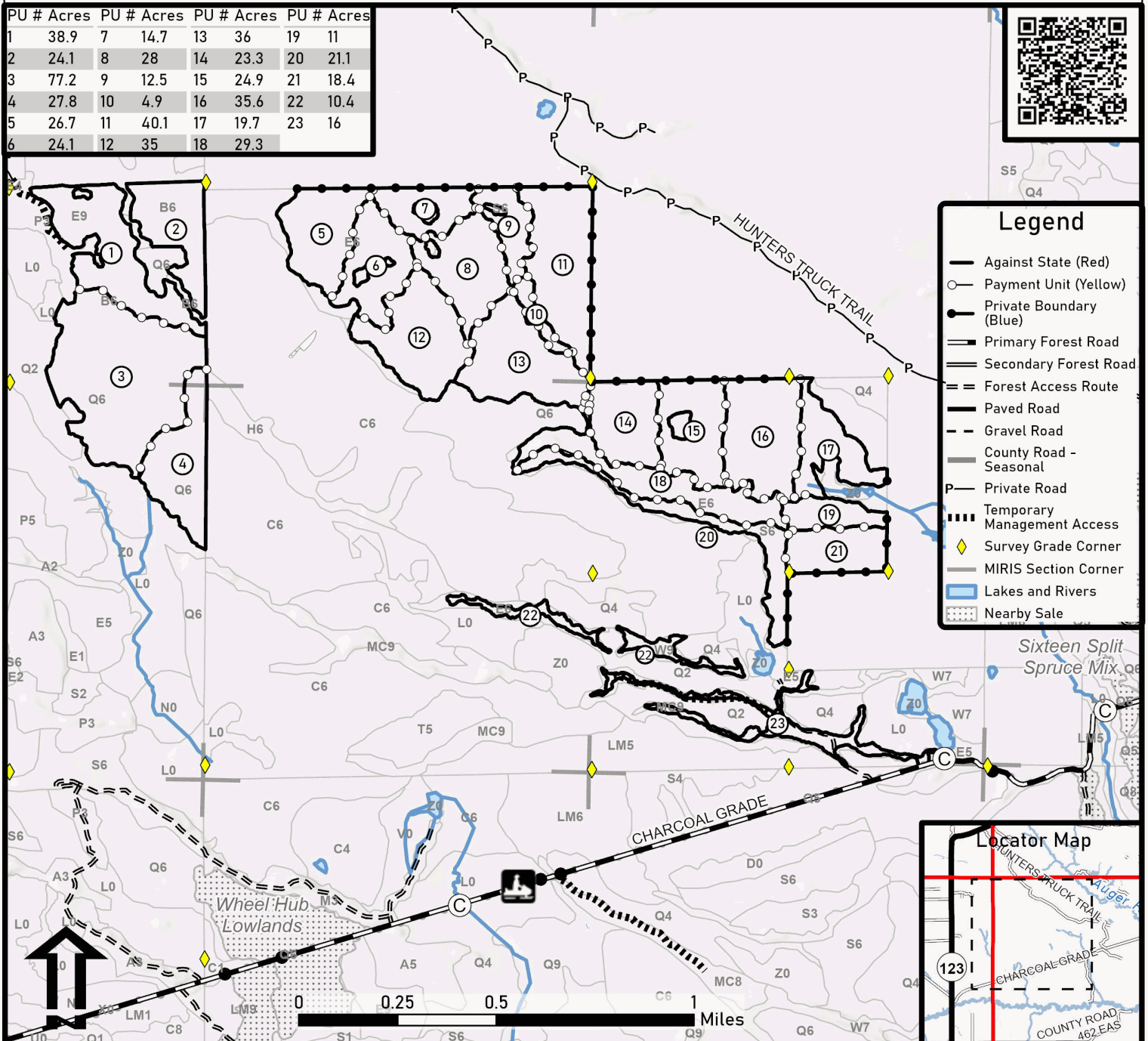
**Density**

0 = Non Stocked	5 = Pole Timber Medium
1 = Seedling Sapling Poor	6 = Pole Timber Well
2 = Seedling Sapling Medium	7 = Saw Timber Poor
3 = Seedling Sapling Well	8 = Saw Timber Medium
4 = Pole Timber Poor	9 = Saw Timber Well

**Colossus Mix**

Compartment: 113 & 114 Acres: 599.7

PU #	Acres	PU #	Acres	PU #	Acres	PU #	Acres
1	38.9	7	14.7	13	36	19	11
2	24.1	8	28	14	23.3	20	21.1
3	77.2	9	12.5	15	24.9	21	18.4
4	27.8	10	4.9	16	35.6	22	10.4
5	26.7	11	40.1	17	19.7	23	16
6	24.1	12	35	18	29.3		





## TIMBER SALE INFORMATION

Witness Protection White Pine (42-022-23)

T48N, R10W, SEC. 31.

Luce County (Advertised Price \$2,869.15)

SALE NOTE: This sale has been reduced due to "no bid" on previous advertisements.

Note that Payment Unit 3 is optional to harvest due to potential access issues. Removing this Payment Unit is a contract modification which requires a Timber Sale Contract Amendment.

The county must be contacted prior to constructing any access roads leading from the county road R-O-W. This applies to Payment Unit 3 and County Road 407.

Permission for access across private land is the responsibility of the Purchaser.

Within Payment Unit(s) 1 - 3, harvesting is limited to periods of frozen conditions, typically from January to April, unless specified by sale administrators due to sensitive and wet soil conditions and/or the operability and creation of "ice roads" for the use of timber removal.

Access may be through private or other public land.

A timber sale contract for this lump sum, sealed bid timber sale will be awarded to the responsible bidder offering the highest sealed bid price. All units of volume listed below were estimated using the Inventory Manager computer program and the new Michigan taper model. Bids must be at or above the following advertised price for each product and species:

<u>PRODUCTS &amp; SPECIES</u>	<u>ESTIMATED UNITS*</u>		<u>ADVERTISED PRICE</u>
Sawtimber			
N. White Cedar	5.6	MBF	\$ 2.00 / MBF
Red Maple	1.1	MBF	\$ 13.00 / MBF
Pulpwood			
Balsam Fir	16	Cords	\$ 3.90 / Cord
Black Spruce	138	Cords	\$ 2.70 / Cord
Jack Pine	1	Cords	\$ 14.05 / Cord
Mixed Aspen	25	Cords	\$ 7.85 / Cord
N. White Cedar	51	Cords	\$ 2.70 / Cord
Paper Birch	10	Cords	\$ 1.20 / Cord
Red Maple	45	Cords	\$ 4.60 / Cord
Red Pine	10	Cords	\$ 25.50 / Cord
Tamarack	13	Cords	\$ 4.30 / Cord
White Pine	195	Cords	\$ 7.85 / Cord

\* The total volume is statistically estimated within plus (+) or minus (-) 43.93 percent. There are an estimated 518 cords on this timber sale, plus or minus 228 cords at the 95% confidence level. The estimated units are final and not subject to adjustment. Prospective bidders are urged to examine this timber and to make their own estimates of quantity and quality.

### **BOND AND PAYMENT SCHEDULE:**

1. A bond in the amount of \$143.00 to insure faithful performance of the conditions of the contract will be deposited by the successful bidder within 21 days of the sale award.
2. Cutting in any sale or unit without the required advance payment would be considered a trespass.
3. Total payment must be paid in advance or according to the following schedule:
  - (a) Ten percent (10%) of the sale value must be paid within 21 days of the sale award.
  - (b) The 10% down payment will be credited towards the first unit cut.
  - (c) Payment for each of the following units must be made before cutting begins in that unit:

PAYMENT UNIT NUMBER	PERCENT OF TOTAL SALE VALUE
01	27.6%
02	60.0%
03	12.4%
4. If no cutting takes place, the 10% down payment will not be refunded.
5. Operations on the contract issued will terminate on 06/30/2029.

**SALE STATISTICS**

Volumes were calculated in cubic feet using the Michigan taper model. Cubic foot volume includes all wood inside bark for the product indicated. For display purposes, cubic feet were converted to cords and MBF using a simple conversion factor, e.g. 79 cubic feet per cord and 185 cubic feet per MBF. The cubic foot volumes are precise; the cords and MBF volumes are not. Cubic foot volume cannot be directly converted to cords or boards with precision.

**SALE VOLUMES**

The total estimated sale volume may not equal the sum of the species/products due to the nature of statistical calculations associated with double sampling methodology.

VOLUME			STATISTICAL RANGE IN CORDS	
TOTAL CUBIC FEET	TOTAL CORDS	PERCENT ERROR	MINIMUM	MAXIMUM
40,960	518	43.93%	291	746

**VDU VOLUMES**

A VDU is a Volume Determination Unit. Volumes and their associated statistics are calculated at the VDU level and summarized to the sale level. There is often a one to one relationship between a VDU and a Payment Unit, but not always, depending on the cruise design. Refer to the VDU TO PAYMENT UNIT table.

	VOLUME			RANGE IN CORDS	
VDU	TOTAL CUBIC FEET	TOTAL CORDS	PERCENT ERROR	MINIMUM	MAXIMUM
103	6,579	83	52.92%	39	127
105	34,381	435	27.14%	317	553
TOTAL:	40,960	518		356	681

**VDU TO PAYMENT UNIT**

When a VDU is associated with more than one Payment Unit (PU), the VDU volumes are assigned to the PU based on acres of the VDU within the PU.

VDU	VDU ACRES	PU	PU ACRES
103	4.5	3	4.5
105	23.9	1	7.6
105	23.9	2	16.3
TOTAL:	52.3		28.4

**DESCRIPTION OF TIMBER BY PAYMENT UNIT (PU)**

PU	MARKET GROUP	PRODUCT	QUANTITY	UNIT	ACRES	ADVERTISE PRICE
1	N. White Cedar	Sawtimber	1.8	MBF	7.6	\$792.45
	Red Maple		0.4	MBF		
	Balsam Fir	Pulpwood	4	Cords		
	Black Spruce		27	Cords		
	Mixed Aspen		1	Cords		
	<i>B. T. Aspen</i>		1	<i>Cords</i>		
	N. White Cedar		16	Cords		
	Paper Birch		3	Cords		
	Red Maple		14	Cords		
	Red Pine		3	Cords		
	Tamarack		3	Cords		
	White Pine		62	Cords		
2	N. White Cedar	Sawtimber	3.8	MBF	16.3	\$1,720.30
	Red Maple		0.7	MBF		
	Balsam Fir	Pulpwood	8	Cords		
	Black Spruce		59	Cords		
	Mixed Aspen		3	Cords		
	<i>B. T. Aspen</i>		3	<i>Cords</i>		
	N. White Cedar		35	Cords		
	Paper Birch		7	Cords		
	Red Maple		31	Cords		
	Red Pine		7	Cords		
	Tamarack		5	Cords		
	White Pine		133	Cords		
3	Balsam Fir	Pulpwood	4	Cords	4.5	\$356.40
	Black Spruce		52	Cords		
	Jack Pine		1	Cords		
	Mixed Aspen		21	Cords		
	<i>Quaking Aspen</i>		21	<i>Cords</i>		
	Tamarack		5	Cords		
TOTAL:			6.7	MBF		
TOTAL:			504	Cords		

## **Sale Specific Conditions & Requirements**

**Sale Name: Witness Protection White Pine**

**Sale Number: 42-022-23 Seq#: 3**

### **1 - Sale Area**

#### **1.2 - Boundaries**

##### **1.2.1 - Painted Boundaries (9/19)**

The sale boundary and Payment Unit boundaries are marked and identified by blue, red, and yellow paint, or are unpainted and identified by a road. Exterior sale boundary lines against private property are marked with blue paint. Exterior sale boundary lines against state are marked with red paint. Interior Payment Unit boundaries are marked with yellow paint, with the exception of the boundary between Payment Units 1 and 2, which are unmarked and designated by a road. Yellow painted trees designating an interior Payment Unit boundary are only to be cut when all surrounding Payment Units have been paid.

### **2 - Timber Specifications**

#### **2.1 - Included Timber**

##### **2.1.2 - Clearcut Unit(s) w/o Unmerchantable Trees (8/11)**

Within Payment Unit(s) 3, cut all trees which meet minimum piece specifications in 2.2 Utilization, except do not cut white pine.

##### **2.1.7 - Leave Tree Marked Unit(s) (6/14)**

Within Payment Unit(s) 1 and 2, cut all trees that are two (2) inches or more at DBH, except do not cut trees marked with green paint, above and below stump height, or any hemlock.

##### **2.1.11 - Description of Timber Note (2/04)**

Note that Payment Unit 3 is optional to harvest due to potential access issues. Removing any or all of these Payment Units is a contract modification which requires a Timber Sale Contract Amendment.

### **3 - Payments**

#### **3.3 - Pre-measured Sales**

##### **3.3.4 - Dividing Payment Units (7/14)**

Payment Unit(s) 2, may be divided at the request of the Purchaser and upon approval of the Unit Manager. Dividing Payment Units is a contract modification which requires a Timber Sale Contract Amendment.

### **4 - Transportation**

#### **4.1 - Construction**

##### **4.1.3 - Slash and Earthen Piles (8/04)**

Piles or windrows of earth along roads and landings that have been widened or constructed shall be leveled. Slash from road maintenance or construction, including stumps, shall be dispersed throughout the sale.

##### **4.1.4 - Timber Removed for Construction (3/23)**

Trees cut or damaged in the process of pre-approved road, landing, or skid trail construction will be decked in an area separate from other Designated Timber and not removed until measured by the Sale Administrator. Payment will be made at contract prices or average prices, if not on the contract.

##### **4.1.6 - Road construction (1/09)**

Construction of new roads or improvements of existing roads shall be done in such a way as to minimize the environmental and visual impacts. Merchantable trees shall be cut and utilized unless otherwise directed. Non-merchantable trees shall be severed and laid flat on the ground. Slash shall be scattered, and not left in windrows and kept a minimum of 10 feet back from the road edge. Stumps shall be set upright, not left on edge, and be moved at least 10 feet away from the road edge. Disturbed soil shall be feathered into the woods and not left in berms or windrows.

##### **4.1.7 - Road Closure (10/11)**

All new roads built into the sale must be blocked to vehicle traffic upon completion of the sale. Overgrown roads that are reopened shall be considered new roads. In general, this will require constructing a four (4') foot high berm of stumps and

logs covered with earth. All stumps from road building and landing construction must be reserved to block any newly constructed roads upon completion of the sale. These stumps must be scattered along the road system to prohibit vehicular movement. Contact the Sale Administrator for specific details of design and placement.

#### 4.3 - Public Right-of-Way

##### 4.3.2 - County R-O-W (12/06)

The County must be contacted prior to constructing any access roads leading from the County Road R-O-W. This applies to Payment Unit 3 and County Road 407.

#### 4.4 - Access

##### 4.4.1 - Private property access (3/11)

Permission for access across private land is the responsibility of the Purchaser.

##### 4.4.2 - Alternate route on private property (2/04)

It is the Purchaser's responsibility to obtain access across private land for any routes other than the route shown on the Timber Sale Map.

### 5 - Operations

#### 5.2 - Conduct of Operations

##### 5.2.2 - Hazard Trees/Snags

###### 5.2.2.1 - Den Trees (10/16)

Obvious hollow and/or den trees shall be protected and left standing unless they are a safety hazard.

##### 5.2.3 - Operating Restrictions

###### 5.2.3.1 - Operating Restrictions (9/11)

Within Payment Unit(s) 1-3, unless changed by written agreement, cutting, skidding, and hauling are limited to periods of frozen conditions, (approximately January to April) unless specified by Sale Administrator. This restriction is due to sensitive and wet soil conditions and/or the operability and creation of "ice roads" for the use of timber removal.

##### 5.2.32 - Decking/Landing Restoration (9/13)

All decking and landing areas must have the surface area restored to a condition equal to or better than before. This is to ensure the proper regeneration of the stand. Wood debris, chips and "cookies" from trimmings must be removed or scattered away from landing and loading areas and may not be windrowed on the edge.

##### 5.2.38 - No Decking Against Live Trees (2/04)

Cut products may not be decked against unmarked or designated leave trees.

#### 5.4 - Soil Protection

##### 5.4.1 - Rutting Restriction, General (7/16)

Operations are to cease immediately if equipment and weather conditions result in rutting of roads and/or skid trails which are 12 inches or greater in depth and 50 feet in length. The Unit Manager or his/her representative may restrict hauling and/or skidding if ruts exceed the specified depth. With the Unit Manager or his/her representative's approval, the Purchaser may return to the area when the risk of rutting has decreased.

##### 5.4.5 - Soil Caution (11/04)

Care must be taken to minimize soil damage due to the lowland soil types.

#### 5.8 - Protection of Endangered Species

##### 5.8.5 - Protection of Raptor Nests (3/13)

All trees with raptor nests will be protected if found during harvesting operations. Notification will be made to the Unit Manager or his/her representative who will notify the Wildlife Biologist so an onsite evaluation and recommendation can be made, if necessary.

### 7 - Other Conditions

## 7.2 - Extensions

### 7.2.5 - Weather-Related Extension (1/13)

If weather conditions during the operating period of this contract prevent harvesting, this sale may qualify for a weather-related extension. If approved, the normal extension fee would be waived. To qualify, there must be a documented attempt each year to harvest in the difficult portion of the sale.



**TIMBER SALE MAP**

This information provided by authority of Part 525, 1994 PA 451, as amended.

Sale Number

42-022-23

Date

10/06/2023

Forest Management Unit  
Newberry Mgt UnitCounty  
Luce

Mapped By: L. Livermore

Cruised By: Ciaramitaro, L. Livermore

Scale

1:15,840

Page

1

Of

1

Township  
48NRange  
10WSection(s) and  
Subdivision(s)

Sec. 31 NESW, N1/2SE;

**Cover Type**

A = Aspen	J = Jack Pine	O = Oak	U = Upland Brush
B = Paper Birch	K = Rock	P = Lowland Poplar	UM = Upland Mix Forest
C = Cedar	L = Lowland Brush	Q = Mixed Swamp Conifer	V = Bog or Marsh
D = Treed Bog	LM = Lowland Mix Forest	R = Red Pine	W = White Pine
E = Swamp Hardwoods	M = Maple, Beech, Birch	S = Black Spruce	X = Non Stocked
F = Spruce/Fir	MC = Mixed Conifer	T = Tamarack	Y = Sand
G = Grass	MD = Mixed Deciduous	Z = Water	
H = Hemlock	N = Marsh		

**Density**

0 = Non Stocked	5 = Pole Timber Medium
1 = Seedling Sapling Poor	6 = Pole Timber Well
2 = Seedling Sapling Medium	7 = Saw Timber Poor
3 = Seedling Sapling Well	8 = Saw Timber Medium
4 = Pole Timber Poor	9 = Saw Timber Well

**Witness Protection White Pine**

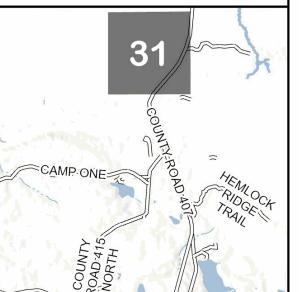
Acres: 28.4    Compartment: 42022

**PU # Acres**

1	7.6
2	16.3
3	4.5

**QR Code****Legend**

- Against State (Red)
- Payment Unit (Yellow)
- Private Boundary (Blue)
- Survey Grade Corner
- MIRIS Section Corner
- State Forest Stand
- Counties
- Culvert
- Nearby Sale
- Secondary Forest Road
- Forest Access Route
- Paved Road
- Private Road
- Temporary Management Access
- Sections Numbers

**Locator Map (1:200,000)**

The Payment Unit boundary between Payment Units 1 & 2 is unpainted and designated by the road.

Proposed Access into PU1&2 through Private w/ Permission or Ice Road through Unit 3.

Approximately 0.8 miles south to Wolf Inn Restaurant on CR407 from PU3.





Camp Six Lowlands (42-002-24)  
T46N, R10W, SEC. 18; Luce COUNTY

In response to the notice of sale to be held 3:00 p.m. (local time) on June 5, 2025, I am hereby submitting my sealed bid ( firm offer) for the following forest products to be cut. Bids for individual species must be at or above the advertised price. All non-responsive bid forms may be rejected.

<u>PRODUCTS &amp; SPECIES</u>	<u>ESTIMATED VOLUME*</u>	<u>ADVERTISED PRICE</u>	<u>BID PRICE/UNIT</u>
<b>Sawtimber</b>			
Black Spruce	21.2 MBF	\$ 4.00/MBF	\$ _____
N. White Cedar	9.3 MBF	\$ 13.00/MBF	\$ _____
Paper Birch	24.3 MBF	\$ 27.00/MBF	\$ _____
Red Maple	39.0 MBF	\$ 19.00/MBF	\$ _____
Yellow Birch	11.0 MBF	\$ 41.00/MBF	\$ _____
<b>Pulpwood</b>			
Balsam Fir	76 Cords	\$ 5.55/Cord	\$ _____
Balsam Poplar	226 Cords	\$ 11.25/Cord	\$ _____
Black Ash	21 Cords	\$ 6.55/Cord	\$ _____
Black Cherry	2 Cords	\$ 6.55/Cord	\$ _____
Black Spruce	44 Cords	\$ 3.85/Cord	\$ _____
N. White Cedar	63 Cords	\$ 3.90/Cord	\$ _____
Paper Birch	152 Cords	\$ 1.70/Cord	\$ _____
Red Maple	463 Cords	\$ 6.55/Cord	\$ _____
Tamarack	28 Cords	\$ 2.25/Cord	\$ _____
White Spruce	30 Cords	\$ 3.85/Cord	\$ _____
Yellow Birch	37 Cords	\$ 6.55/Cord	\$ _____

\*The volumes are statistically estimated within plus (+) or minus (-) 34.39 percent at 95% confidence level. These estimated volumes are final and not subject to adjustment. Prospective bidders are urged to examine this timber and to make their own estimates of quantity and quality.

I understand that any or all bids may be rejected. All bids must be signed and all bid items must be bid or the bid form may be rejected. I also understand that consideration and awarding a contract will be based upon my past performance and ability to complete the contract based upon equipment and staffing subject to my control .

FEDERAL ID: \_\_\_\_ - \_\_\_\_ - \_\_\_\_ or SOCIAL SECURITY NUMBER: \_\_\_\_ - \_\_\_\_ - \_\_\_\_

Company or individual bidding: \_\_\_\_\_

Company representative's name: \_\_\_\_\_

Address: \_\_\_\_\_

City: \_\_\_\_\_ State: \_\_\_\_\_ Zip: \_\_\_\_\_

IF AVAILABLE, PLEASE PLACE THE PERSONALIZED LABEL FROM YOUR PROSPECTUS IN THE ABOVE BOX.

Individual or company representative's signature: \_\_\_\_\_ Date: \_\_\_\_\_

Phone number : \_\_\_\_\_ Email (optional): \_\_\_\_\_

**THE WINNING BIDDER MUST COMPLETE THE VERIFICATION OF WORKER'S DISABILITY COMPENSATION ACT  
COMPLIANCE (ON REVERSE SIDE IF DOUBLE SIDED) WITHIN 21 DAYS OF SALE AWARD DATE**



**TIMBER SALE**  
**VERIFICATION OF WORKER'S DISABILITY**  
**COMPENSATION ACT COMPLIANCE**

*As required by Act 317, P.A. 1969 (Worker's Compensation) and  
Part 5 of Act 451 of 1994, as amended.*

**FOR DEPARTMENT USE ONLY**

Sale Number (XX – XXX – XX – XX)

Forest Management Unit:

**VERIFICATION OF WORKER'S DISABILITY COMPENSATION ACT COMPLIANCE**

- This verification must be completed and submitted within 21 days of contract award and prior to the issuance of the timber sale contract.
- In addition, if boxes 2B or 2C are checked, then Notice of Exclusion or Certificate of Insurance must be submitted within twenty-one (21) days of the contract award and prior to the issuance of the timber sale contract.
- All Information must be typed or printed except for written signatures.

Please Check Appropriate Categories:

1. My business is organized as (you **must** check one of the boxes below):
  - A. ☐ Sole Proprietorship (individual)
  - B. ☐ Partnership
  - C. ☐ Corporation
2. You **must** check one of the boxes below:
  - A. ☐ I certify my business is a sole proprietorship and it has no employees but the sole proprietor. I am not subject to the Worker's Compensation Laws.
  - B. ☐ I certify my business has satisfied its obligation to the Worker's Compensation Act through the use of an approved Notice of Exclusion (BWC-337, Rev. 5/96). I will provide a copy of the Notice of Exclusion within 21 days of the contract award. (For questions or a copy of the BWC-337, please call the Worker's Compensation Bureau at 517-322-1195).
  - C. ☐ I certify my business has a Worker's Compensation Policy. I will provide an original Certificate of Insurance within twenty-one (21) days of the contract award.
3. If you have checked item 2(A) or 2(B), you **must** indicate the number of **both** full-time and part-time employees, other than yourself, including family members and active partners (if none, you must enter "0").

\_\_\_\_\_ Full-time Employees

\_\_\_\_\_ Part-time Employees

Name of Business		Federal ID (or) Social Security No.
Address		Telephone (       )
City	State	ZIP

*I hereby certify that the above information is true and correct. I agree to notify the Michigan DNR of any changes that occur in factors affecting my coverage during any of my present and future operations.*

\_\_\_\_\_  
Signature of Owner or Authorized Representative

\_\_\_\_\_  
Title

\_\_\_\_\_  
Date

**Please complete the "SEALED BID" information on the next page**

Classe Spruce (42-004-24)  
T46N, R12W, SEC. 31; Luce COUNTY

In response to the notice of sale to be held 3:00 p.m. (local time) on June 5, 2025, I am hereby submitting my sealed bid ( firm offer) for the following forest products to be cut. Bids for individual species must be at or above the advertised price. All non-responsive bid forms may be rejected.

<u>PRODUCTS &amp; SPECIES</u>	<u>ESTIMATED VOLUME*</u>	<u>ADVERTISED PRICE</u>	<u>BID PRICE/UNIT</u>
Pulpwood			
Black Spruce	474 Cords	\$ 3.85/Cord	\$ _____
Tamarack	41 Cords	\$ 2.25/Cord	\$ _____
White Pine	28 Cords	\$ 11.20/Cord	\$ _____

\*The volumes are statistically estimated within plus (+) or minus (-) 11.53 percent at 95% confidence level. These estimated volumes are final and not subject to adjustment. Prospective bidders are urged to examine this timber and to make their own estimates of quantity and quality.

I understand that any or all bids may be rejected. All bids must be signed and all bid items must be bid or the bid form may be rejected. I also understand that consideration and awarding a contract will be based upon my past performance and ability to complete the contract based upon equipment and staffing subject to my control .

FEDERAL ID: \_\_\_\_ - \_\_\_\_ - \_\_\_\_ or SOCIAL SECURITY NUMBER: \_\_\_\_ - \_\_\_\_ - \_\_\_\_

Company or individual bidding: \_\_\_\_\_

Company representative's name: \_\_\_\_\_

Address: \_\_\_\_\_

City: \_\_\_\_\_ State: \_\_\_\_\_ Zip: \_\_\_\_\_

IF AVAILABLE, PLEASE PLACE THE PERSONALIZED LABEL FROM YOUR PROSPECTUS IN THE ABOVE BOX.

Individual or company representative's signature: \_\_\_\_\_ Date: \_\_\_\_\_

Phone number : \_\_\_\_\_ Email (optional): \_\_\_\_\_

**THE WINNING BIDDER MUST COMPLETE THE VERIFICATION OF WORKER'S DISABILITY COMPENSATION ACT  
COMPLIANCE (ON REVERSE SIDE IF DOUBLE SIDED) WITHIN 21 DAYS OF SALE AWARD DATE**



**TIMBER SALE**  
**VERIFICATION OF WORKER'S DISABILITY**  
**COMPENSATION ACT COMPLIANCE**

*As required by Act 317, P.A. 1969 (Worker's Compensation) and  
Part 5 of Act 451 of 1994, as amended.*

**FOR DEPARTMENT USE ONLY**

Sale Number (XX – XXX – XX – XX)

Forest Management Unit:

**VERIFICATION OF WORKER'S DISABILITY COMPENSATION ACT COMPLIANCE**

- This verification must be completed and submitted within 21 days of contract award and prior to the issuance of the timber sale contract.
- In addition, if boxes 2B or 2C are checked, then Notice of Exclusion or Certificate of Insurance must be submitted within twenty-one (21) days of the contract award and prior to the issuance of the timber sale contract.
- All information must be typed or printed except for written signatures.

Please Check Appropriate Categories:

1. My business is organized as (you **must** check one of the boxes below):
  - A. ☐ Sole Proprietorship (individual)
  - B. ☐ Partnership
  - C. ☐ Corporation
2. You **must** check one of the boxes below:
  - A. ☐ I certify my business is a sole proprietorship and it has no employees but the sole proprietor. I am not subject to the Worker's Compensation Laws.
  - B. ☐ I certify my business has satisfied its obligation to the Worker's Compensation Act through the use of an approved Notice of Exclusion (BWC-337, Rev. 5/96). I will provide a copy of the Notice of Exclusion within 21 days of the contract award. (For questions or a copy of the BWC-337, please call the Worker's Compensation Bureau at 517-322-1195).
  - C. ☐ I certify my business has a Worker's Compensation Policy. I will provide an original Certificate of Insurance within twenty-one (21) days of the contract award.
3. If you have checked item 2(A) or 2(B), you **must** indicate the number of **both** full-time and part-time employees, other than yourself, including family members and active partners (if none, you must enter "0").

\_\_\_\_\_ Full-time Employees

\_\_\_\_\_ Part-time Employees

Name of Business		Federal ID (or) Social Security No.
Address		Telephone (       )
City	State	ZIP

*I hereby certify that the above information is true and correct. I agree to notify the Michigan DNR of any changes that occur in factors affecting my coverage during any of my present and future operations.*

\_\_\_\_\_  
Signature of Owner or Authorized Representative

\_\_\_\_\_  
Title

\_\_\_\_\_  
Date

**Please complete the "SEALED BID" information on the next page**

LLBB (42-018-24)

T45N, R08W, SEC. 18; T45N, R08W, SEC. 19; T45N, R08W, SEC. 20; Luce

In response to the notice of sale to be held 3:00 p.m. (local time) on June 5, 2025, I am hereby submitting my sealed bid ( firm offer) for the following forest products to be cut. Bids for individual species must be at or above the advertised price. All non-responsive bid forms may be rejected.

<u>PRODUCTS &amp; SPECIES</u>	<u>ESTIMATED VOLUME*</u>	<u>ADVERTISED PRICE</u>	<u>BID PRICE/UNIT</u>
Sawtimber			
Red Maple	15.3 MBF	\$ 19.00/MBF	\$ _____
Yellow Birch	0.6 MBF	\$ 41.00/MBF	\$ _____
Pulpwood			
Balsam Fir	310 Cords	\$ 5.55/Cord	\$ _____
Black Spruce	674 Cords	\$ 3.85/Cord	\$ _____
Mixed Hardwood	520 Cords	\$ 6.55/Cord	\$ _____
Quaking Aspen	328 Cords	\$ 11.25/Cord	\$ _____
Tamarack	88 Cords	\$ 2.25/Cord	\$ _____

\*The volumes are statistically estimated within plus (+) or minus (-) 14.10 percent at 95% confidence level. These estimated volumes are final and not subject to adjustment. Prospective bidders are urged to examine this timber and to make their own estimates of quantity and quality.

I understand that any or all bids may be rejected. All bids must be signed and all bid items must be bid or the bid form may be rejected. I also understand that consideration and awarding a contract will be based upon my past performance and ability to complete the contract based upon equipment and staffing subject to my control .

FEDERAL ID: \_\_\_\_ - \_\_\_\_ - \_\_\_\_ or SOCIAL SECURITY NUMBER: \_\_\_\_ - \_\_\_\_ - \_\_\_\_  
Company or individual bidding: \_\_\_\_\_  
Company representative's name: \_\_\_\_\_  
Address: \_\_\_\_\_  
City: \_\_\_\_\_ State: \_\_\_\_\_ Zip: \_\_\_\_\_

IF AVAILABLE, PLEASE PLACE THE PERSONALIZED LABEL FROM YOUR PROSPECTUS IN THE ABOVE BOX.

Individual or company representative's signature: \_\_\_\_\_ Date: \_\_\_\_\_

Phone number : \_\_\_\_\_ Email (optional): \_\_\_\_\_

**THE WINNING BIDDER MUST COMPLETE THE VERIFICATION OF WORKER'S DISABILITY COMPENSATION ACT  
COMPLIANCE (ON REVERSE SIDE IF DOUBLE SIDED) WITHIN 21 DAYS OF SALE AWARD DATE**



## TIMBER SALE VERIFICATION OF WORKER'S DISABILITY COMPENSATION ACT COMPLIANCE

As required by Act 317, P.A. 1969 (Worker's Compensation) and  
Part 5 of Act 451 of 1994, as amended.

### FOR DEPARTMENT USE ONLY

Sale Number (XX - XXX - XX - XX)

Forest Management Unit:

### VERIFICATION OF WORKER'S DISABILITY COMPENSATION ACT COMPLIANCE

- This verification must be completed and submitted within 21 days of contract award and prior to the issuance of the timber sale contract.
- In addition, if boxes 2B or 2C are checked, then Notice of Exclusion or Certificate of Insurance must be submitted within twenty-one (21) days of the contract award and prior to the issuance of the timber sale contract.
- All information must be typed or printed except for written signatures.

Please Check Appropriate Categories:

1. My business is organized as (you **must** check one of the boxes below):
  - A. ☐ Sole Proprietorship (individual)
  - B. ☐ Partnership
  - C. ☐ Corporation
2. You **must** check one of the boxes below:
  - A. ☐ I certify my business is a sole proprietorship and it has no employees but the sole proprietor. I am not subject to the Worker's Compensation Laws.
  - B. ☐ I certify my business has satisfied its obligation to the Worker's Compensation Act through the use of an approved Notice of Exclusion (BWC-337, Rev. 5/96). I will provide a copy of the Notice of Exclusion within 21 days of the contract award. (For questions or a copy of the BWC-337, please call the Worker's Compensation Bureau at 517-322-1195).
  - C. ☐ I certify my business has a Worker's Compensation Policy. I will provide an original Certificate of Insurance within twenty-one (21) days of the contract award.
3. If you have checked item 2(A) or 2(B), you **must** indicate the number of **both** full-time and part-time employees, other than yourself, including family members and active partners (if none, you must enter "0").

\_\_\_\_\_ Full-time Employees

\_\_\_\_\_ Part-time Employees

Name of Business		Federal ID (or) Social Security No.
Address		Telephone (       )
City	State	ZIP

*I hereby certify that the above information is true and correct. I agree to notify the Michigan DNR of any changes that occur in factors affecting my coverage during any of my present and future operations.*

\_\_\_\_\_  
Signature of Owner or Authorized Representative

\_\_\_\_\_  
Title

\_\_\_\_\_  
Date

Please complete the "SEALED BID" information on the next page



Colossus Mix (42-015-23)

T46N, R09W, SEC. 6; T46N, R09W, SEC. 7; T46N, R09W, SEC. 8; T46N, R10W,

In response to the notice of sale to be held 3:00 p.m. (local time) on June 5, 2025, I am hereby submitting my sealed bid ( firm offer) for the following forest products to be cut. Bids for individual species must be at or above the advertised price. All non-responsive bid forms may be rejected.

<u>PRODUCTS &amp; SPECIES</u>	<u>ESTIMATED VOLUME*</u>	<u>ADVERTISED PRICE</u>	<u>BID PRICE/UNIT</u>
<b>Sawtimber</b>			
Paper Birch	11.1 MBF	\$ 21.00/MBF	\$ _____
Red Maple	23.8 MBF	\$ 15.00/MBF	\$ _____
White Pine	244.8 MBF	\$ 24.00/MBF	\$ _____
<b>Pulpwood</b>			
Balsam Fir	552 Cords	\$ 4.45/Cord	\$ _____
Mixed Aspen	132 Cords	\$ 9.00/Cord	\$ _____
Mixed Hardwood	6,842 Cords	\$ 5.25/Cord	\$ _____
Mixed Spruce	1,650 Cords	\$ 3.10/Cord	\$ _____
N. White Cedar	5,407 Cords	\$ 3.10/Cord	\$ _____
Tamarack	223 Cords	\$ 5.05/Cord	\$ _____
White Pine	60 Cords	\$ 8.95/Cord	\$ _____

\*The volumes are statistically estimated within plus (+) or minus (-) 5.73 percent at 95% confidence level. These estimated volumes are final and not subject to adjustment. Prospective bidders are urged to examine this timber and to make their own estimates of quantity and quality.

I understand that any or all bids may be rejected. All bids must be signed and all bid items must be bid or the bid form may be rejected. I also understand that consideration and awarding a contract will be based upon my past performance and ability to complete the contract based upon equipment and staffing subject to my control .

FEDERAL ID: \_\_\_\_ - \_\_\_\_ - \_\_\_\_ or SOCIAL SECURITY NUMBER: \_\_\_\_ - \_\_\_\_ - \_\_\_\_

Company or individual bidding: \_\_\_\_\_

Company representative's name: \_\_\_\_\_

Address: \_\_\_\_\_

City: \_\_\_\_\_ State: \_\_\_\_\_ Zip: \_\_\_\_\_

IF AVAILABLE, PLEASE PLACE THE PERSONALIZED LABEL FROM YOUR PROSPECTUS IN THE ABOVE BOX.

Individual or company representative's signature: \_\_\_\_\_ Date: \_\_\_\_\_

Phone number : \_\_\_\_\_ Email (optional): \_\_\_\_\_

**THE WINNING BIDDER MUST COMPLETE THE VERIFICATION OF WORKER'S DISABILITY COMPENSATION ACT  
COMPLIANCE (ON REVERSE SIDE IF DOUBLE SIDED) WITHIN 21 DAYS OF SALE AWARD DATE**



**TIMBER SALE**  
**VERIFICATION OF WORKER'S DISABILITY**  
**COMPENSATION ACT COMPLIANCE**

*As required by Act 317, P.A. 1969 (Worker's Compensation) and  
Part 5 of Act 451 of 1994, as amended.*

**FOR DEPARTMENT USE ONLY**

Sale Number (XX – XXX – XX – XX)

Forest Management Unit:

**VERIFICATION OF WORKER'S DISABILITY COMPENSATION ACT COMPLIANCE**

- This verification must be completed and submitted within 21 days of contract award and prior to the issuance of the timber sale contract.
- In addition, if boxes 2B or 2C are checked, then Notice of Exclusion or Certificate of Insurance must be submitted within twenty-one (21) days of the contract award and prior to the issuance of the timber sale contract.
- All Information must be typed or printed except for written signatures.

Please Check Appropriate Categories:

1. My business is organized as (you **must** check one of the boxes below):
  - A. ☐ Sole Proprietorship (individual)
  - B. ☐ Partnership
  - C. ☐ Corporation
2. You **must** check one of the boxes below:
  - A. ☐ I certify my business is a sole proprietorship and it has no employees but the sole proprietor. I am not subject to the Worker's Compensation Laws.
  - B. ☐ I certify my business has satisfied its obligation to the Worker's Compensation Act through the use of an approved Notice of Exclusion (BWC-337, Rev. 5/96). I will provide a copy of the Notice of Exclusion within 21 days of the contract award. (For questions or a copy of the BWC-337, please call the Worker's Compensation Bureau at 517-322-1195).
  - C. ☐ I certify my business has a Worker's Compensation Policy. I will provide an original Certificate of Insurance within twenty-one (21) days of the contract award.
3. If you have checked item 2(A) or 2(B), you **must** indicate the number of **both** full-time and part-time employees, other than yourself, including family members and active partners (if none, you must enter "0").

\_\_\_\_\_ Full-time Employees

\_\_\_\_\_ Part-time Employees

Name of Business		Federal ID (or) Social Security No.
Address		Telephone (       )
City	State	ZIP

*I hereby certify that the above information is true and correct. I agree to notify the Michigan DNR of any changes that occur in factors affecting my coverage during any of my present and future operations.*

\_\_\_\_\_  
Signature of Owner or Authorized Representative

\_\_\_\_\_  
Title

\_\_\_\_\_  
Date

**Please complete the "SEALED BID" information on the next page**

Witness Protection White Pine (42-022-23)  
T48N, R10W, SEC. 31; Luce COUNTY

In response to the notice of sale to be held 3:00 p.m. (local time) on June 5, 2025, I am hereby submitting my sealed bid ( firm offer) for the following forest products to be cut. Bids for individual species must be at or above the advertised price. All non-responsive bid forms may be rejected.

<u>PRODUCTS &amp; SPECIES</u>	<u>ESTIMATED VOLUME*</u>	<u>ADVERTISED PRICE</u>	<u>BID PRICE/UNIT</u>
<b>Sawtimber</b>			
N. White Cedar	5.6 MBF	\$ 2.00/MBF	\$ _____
Red Maple	1.1 MBF	\$ 13.00/MBF	\$ _____
<b>Pulpwood</b>			
Balsam Fir	16 Cords	\$ 3.90/Cord	\$ _____
Black Spruce	138 Cords	\$ 2.70/Cord	\$ _____
Jack Pine	1 Cords	\$ 14.05/Cord	\$ _____
Mixed Aspen	25 Cords	\$ 7.85/Cord	\$ _____
N. White Cedar	51 Cords	\$ 2.70/Cord	\$ _____
Paper Birch	10 Cords	\$ 1.20/Cord	\$ _____
Red Maple	45 Cords	\$ 4.60/Cord	\$ _____
Red Pine	10 Cords	\$ 25.50/Cord	\$ _____
Tamarack	13 Cords	\$ 4.30/Cord	\$ _____
White Pine	195 Cords	\$ 7.85/Cord	\$ _____

\*The volumes are statistically estimated within plus (+) or minus (-) 43.93 percent at 95% confidence level. These estimated volumes are final and not subject to adjustment. Prospective bidders are urged to examine this timber and to make their own estimates of quantity and quality.

I understand that any or all bids may be rejected. All bids must be signed and all bid items must be bid or the bid form may be rejected. I also understand that consideration and awarding a contract will be based upon my past performance and ability to complete the contract based upon equipment and staffing subject to my control.

FEDERAL ID: \_\_\_\_ - \_\_\_\_ - \_\_\_\_ or SOCIAL SECURITY NUMBER: \_\_\_\_ - \_\_\_\_ - \_\_\_\_

Company or individual bidding: \_\_\_\_\_

Company representative's name: \_\_\_\_\_

Address: \_\_\_\_\_

City: \_\_\_\_\_ State: \_\_\_\_\_ Zip: \_\_\_\_\_

IF AVAILABLE, PLEASE PLACE THE PERSONALIZED LABEL FROM YOUR PROSPECTUS IN THE ABOVE BOX.

Individual or company representative's signature: \_\_\_\_\_ Date: \_\_\_\_\_

Phone number : \_\_\_\_\_ Email (optional): \_\_\_\_\_

**THE WINNING BIDDER MUST COMPLETE THE VERIFICATION OF WORKER'S DISABILITY COMPENSATION ACT  
COMPLIANCE (ON REVERSE SIDE IF DOUBLE SIDED) WITHIN 21 DAYS OF SALE AWARD DATE**



## TIMBER SALE VERIFICATION OF WORKER'S DISABILITY COMPENSATION ACT COMPLIANCE

As required by Act 317, P.A. 1969 (Worker's Compensation) and  
Part 5 of Act 451 of 1994, as amended.

### FOR DEPARTMENT USE ONLY

Sale Number (XX - XXX - XX - XX)

Forest Management Unit:

### VERIFICATION OF WORKER'S DISABILITY COMPENSATION ACT COMPLIANCE

- This verification must be completed and submitted within 21 days of contract award and prior to the issuance of the timber sale contract.
- In addition, if boxes 2B or 2C are checked, then Notice of Exclusion or Certificate of Insurance must be submitted within twenty-one (21) days of the contract award and prior to the issuance of the timber sale contract.
- All information must be typed or printed except for written signatures.

Please Check Appropriate Categories:

1. My business is organized as (you **must** check one of the boxes below):
  - A. ☐ Sole Proprietorship (individual)
  - B. ☐ Partnership
  - C. ☐ Corporation
2. You **must** check one of the boxes below:
  - A. ☐ I certify my business is a sole proprietorship and it has no employees but the sole proprietor. I am not subject to the Worker's Compensation Laws.
  - B. ☐ I certify my business has satisfied its obligation to the Worker's Compensation Act through the use of an approved Notice of Exclusion (BWC-337, Rev. 5/96). I will provide a copy of the Notice of Exclusion within 21 days of the contract award. (For questions or a copy of the BWC-337, please call the Worker's Compensation Bureau at 517-322-1195).
  - C. ☐ I certify my business has a Worker's Compensation Policy. I will provide an original Certificate of Insurance within twenty-one (21) days of the contract award.
3. If you have checked item 2(A) or 2(B), you **must** indicate the number of **both** full-time and part-time employees, other than yourself, including family members and active partners (if none, you must enter "0").

\_\_\_\_\_ Full-time Employees

\_\_\_\_\_ Part-time Employees

Name of Business		Federal ID (or) Social Security No.
Address		Telephone (       )
City	State	ZIP

*I hereby certify that the above information is true and correct. I agree to notify the Michigan DNR of any changes that occur in factors affecting my coverage during any of my present and future operations.*

\_\_\_\_\_  
Signature of Owner or Authorized Representative

\_\_\_\_\_  
Title

\_\_\_\_\_  
Date

Please complete the "SEALED BID" information on the next page