



**DEPARTMENT OF NATURAL RESOURCES
STATE OF MICHIGAN
TIMBER SALE PROSPECTUS #7615**

SCHEDULED SALE DATE AND TIME: 3:00 p.m. (local time) on June 12, 2025.

LOCATION: NEWBERRY MGMT UNIT, 5666 S STATE HWY M 123, NEWBERRY, MI 49868.

PROSPECTUS NOTE: The bidder is advised to inspect the sale area and review the location, estimated volumes, operating costs and contract terms of proposed sales. Please be aware that some landowners may request 60 days or more notice for access across their land.

Notice is hereby given that bids will be received by the Unit Manager, NEWBERRY MANAGEMENT UNIT, for certain timber on the following described lands:

Scotch with a Splash of Jack (42-012-24) / T49N, R12W, SEC. 2 , S1/2NE,N1/2SE.

Luce County, Advertised Price \$8,047.10, 17.9 Acres, Jack Pine, Spruce/Fir/Tamarack.

SALE NOTE: No new roads will be permitted in any Payment Unit. All operations are limited to existing roads. Skid trails only will be allowed, including the creation of one or more turn arounds.

Road maintenance is required on this sale. See Sale Spec 4.2.3 for additional information.

Given justification, only one (1), one-year extension may be granted if the contract has been paid for in full.

Chris Brown Lake Jack Pine (42-014-24) / T49N, R10W, SEC. 24, SWSW.

T49N, R10W, SEC. 25, NW,N1/2SW,SWSW.

Luce County, Advertised Price \$47,283.35, 116.7 Acres, Jack Pine, White Pine.

SALE NOTE: One hundred yards of 3" minus gravel is required on Chris Brown Lake Road to fill holes in sandy sections.

No new roads will be permitted in any Payment Unit. All operations are limited to existing roads. Skid trails and stub turnarounds only will be allowed.

The Sale Area has received damage from some age mortality. The Purchaser should harvest the wood as soon as possible.

Blue Line Bonanza (42-016-24) / T48N, R06W, SEC. 6 , N1/2NW,SWNW,SW,NWSE.
T48N, R07W, SEC. 1 , E1/2NE.

Chippewa County, Advertised Price \$40,398.85, 247.5 Acres, Hardwood, Spruce/Fir/Tamarack.

SALE NOTE: Roads may require the installation of culverts for cross drainage or at natural drainage-ways.
See Sale Spec 4.1.5 for additional information.

Permission for access across private land is the responsibility of the Purchaser. A copy of the written permission from the private landowner must be given to the Unit Manager PRIOR to bid opening, or the bid will not be accepted.

It is recommended that within Payment Units 3 and 5-17, harvesting occur during dry summer or frozen winter conditions because of low, wet ground.

Some roads or skid trails require extra protection such as that afforded by interlocking composite mats or another approved system. If available, mats may be borrowed from the DNR. See Sale Spec 5.2.17 for additional information.

Access may be through private land.

BID INSTRUCTIONS (VER. 10/10/2022):

1. Scheduled Bid Location, Date, and Time (2/11)

Bids must be received by the Unit Manager, NEWBERRY OFFICE, 5666 S STATE HWY M 123, NEWBERRY, MI 49868, no later than 3:00 p.m. (local time) on June 12, 2025. For further information concerning this sale, contact Keith Magnusson at 906-291-0120 extension n/a.

2. Bidder's Qualifications (10/22)

If all or part of a timber sale was prepared by a private contractor, the contractor and that contractor's company are not permitted to bid on the timber sale. A person must be 18 years of age or older to purchase timber. Permanent employees of the Department of Natural Resources or members of their immediate household may not bid. Former employees, in the permanent or seasonal class, may not bid until 3 months after the last day of active duty. Bids will not be accepted from individuals or companies appearing on the DNR/FRD No-Bid List. This list contains the names of purchasers who previously failed to execute a contract within 21-days or who have a history of poor performance.

3. Preparation of Sealed Bids (5/16)

Bid Forms may be completed online thru Michigan DNR Timber Sale Online Bidding (OLB) at www.michigan.gov/timberbidding or by completing the hardcopy Bid Form found in the Timber Sale Prospectus. Hardcopy Bid Forms shall be manually signed in ink. Registration in OLB is considered your 'signature' for all bids submitted thru that system. Bid prices must be entered for each species and product in the Bid Price column for all material subject to bidding and all fill-in blanks must be completed. If erasures or other changes appear on the hardcopy Bid Form, each erasure or change must be initialed by the person signing the bid.

4. Submission of Sealed Bids (5/16)

Bid forms may be obtained from the Unit Manager or thru OLB. Bids may be submitted hardcopy or thru OLB. All hardcopy bids must be submitted on the bid form and in an envelope clearly identified as described in this section. NOTE: Only one bid form per bid envelope. Sealed bids must be submitted to the Unit office designated in the prospectus and must be submitted at or prior to the time established in the prospectus. The envelope should show on the outside (a) the sale name or number and (b) the date and time of bid opening, as shown in the prospectus. Bids received after the time specified in the sale prospectus are late bids and will be rejected.

It is possible for a bidder to submit multiple bids on a single sale. For example, a bid may be submitted hardcopy and a bid may be submitted thru OLB. Or, two bidders from the same company could both submit bids on the same sale. If this were to happen, the State would accept all bids received and award the contract accordingly. All bidding and contractual requirements would apply to all bids received.

5. Public Opening of Sealed Bids (7/16)

If conditions permit, the sealed bids will be publicly opened and posted at the time and place set in the prospectus.

If a bidder, present at a bid opening, has submitted bids on more than one sale, that bidder may withdraw their unopened bid envelopes or announce the withdrawal of their online bid after being declared the successful bidder on one sale.

6. Award of Contract (1/11)

Award of the contract will be made to the Bidder whose bid, conforming to the prospectus, is most advantageous to the State of Michigan on the basis of total value at rates bid for the estimated quantities. The State reserves the right to reject any bid or waive any minor irregularity in bids received. A written award mailed (or otherwise furnished) to the successful Bidder shall be deemed to result in a binding contract without further action by either party.

7. Down Payment (1/11)

The Bidder to whom award is made must make a down payment within 21 days of the sale award. The amount of the down payment will be calculated as shown in the Bond and Payment Schedule of this prospectus. Only cash may be used to meet this requirement.

8. Performance Security (1/11)

As guarantee of faithful performance, a cash bond, certificate of deposit, surety bond or irrevocable letter of credit (LOC) is required within 21 days of the sale award. The amount of the performance security is shown in the Bond and

Payment Schedule of this prospectus. If an LOC or surety is used, the coverage must extend for at least 6 months beyond the contract expiration.

9. Worker's Compensation (10/22)

Purchaser shall obtain worker's compensation insurance to cover claims under Michigan's Worker's Disability Compensation Act of 1969 or similar employee benefit act of any other state applicable to an employee. Verification of Worker's Disability Compensation Act Compliance must be completed and submitted within 21 days of contract award and prior to the issuance of the timber sale contract. In addition, if applicable, Notice of Exclusion or Certificate of Insurance must also be submitted.

10. Timber Sale Contract (10/22)

Additional conditions and requirements common to all timber sales are listed on the timber sale contract (R4031) and are available on line at www.michigan.gov/timber. Contact the Unit Manager for additional information or a sample contract. Within 21 days of the date of the award letter, the bidder must sign the contract and provide the required down payment, performance security, and verification of worker's disability compensation. The down payment and performance security shall be in accordance with the provisions of the timber sale contract, in the sums stated in this prospectus. If these actions are not taken, then the Bidder, the Bidder's corporation, and the corporation's principals may not be permitted to bid on State timber sales for a period of 3 months after the first offense, 6 months after the second offense, and 1 year after the third offense. An offense will only be counted against the Bidder for 5 years. In addition, the Bidder certifies that if awarded this contract, the Bidder will complete the timber sale contract in accordance with its terms and any modifications thereof including requirements to purchase, cut, and remove the included timber by the expiration date.

Payment Unit values in the State Forest Timber Sale Contract are calculated based on the advertised value of the Payment Unit as a percentage of the total advertised value of the contract. The advertised value of each Payment Unit is given in the Description of Timber by Payment Unit table on the Timber Sale Information page. For example, if the value of Payment Unit 1 is advertised as \$1,500 and the total Timber Sale value is advertised as \$10,000, the contract price for Payment Unit 1 will be 15% of the total bid price ($\$1,500/\$10,000 * 100$).

11. Disclaimer of Estimates and Bidder's Warranty of Inspection (10/22)

Before submitting this bid, the Bidder is advised and cautioned to inspect the sale area, review the requirements of the sale contract, and take other steps as may be reasonably necessary to ascertain the location, estimated volumes, construction estimates, and operating costs of the proposed sale. Failure to do so will not relieve the Bidder from responsibility for completing the contract.

The Bidder warrants that this bid is submitted solely on the basis of the Bidder's examination and inspection of the quality and quantity of the timber offered for sale and the Bidder's opinion of the value thereof and the costs of recovery. No reliance should be placed on the State of Michigan's estimates of timber quality, quantity or costs of recovery. Bidder further acknowledges that the State of Michigan: (i) expressly disclaims any warranty of fitness of timber for any purpose; (ii) offers this timber as is without any warranty of quality (merchantability) or quantity and (iii) expressly disclaims any warranty as to the quantity or quality of timber sold.

12. Certification and Chain-of-Custody (10/22)

Unless otherwise indicated in the contract under section 7 – Other Conditions of the Sale Specific Conditions & Requirements, the area encompassed by this timber sale is certified to the standards of the Forest Stewardship Council (FSC) - Certificate #SCS-FM/COC-00090N and the Sustainable Forestry Initiative (SFI) - Certificate #NSF-SFIS-5Y031-SF5. Forest products from this sale may be delivered to the mill as "FSC 100% and / or SFI certified" as long as the contractor hauling the forest products is chain-of-custody (COC) certified or covered under a COC certificate from the destination mill. The purchaser is responsible for maintaining COC after leaving the sale area.

13. Good Neighbor Authority (GNA) Requirements (10/22)

If the name of this timber sales contains the acronym GNA, it is authorized by the Good Neighbor Authority (GNA) and covered by various agreements between the U.S. Forest Service and the State. The timber sale occurs on federal land and the following conditions apply:

GNA contracts on US Forest Service land will not be awarded to purchasers on the Federal list of excluded parties. The System for Award Management (SAM) will be checked for active excluded parties prior to award of contract. In

addition, the Bidder to whom award is made must complete an Assurance Regarding Felony Conviction or Tax Delinquent Status for Corporate Applicants (AD-3031).

14. Good Neighbor Authority (GNA) Requirements, con't (10/22)

Bidder certifies, by signing this bid form, that to the best of Bidder's knowledge that the following representations are accurate and complete.

- a. That the Bidder and its principals are not presently debarred, suspended, proposed for debarment, declared ineligible, or voluntary excluded from timber sales (covered transactions) by any Federal department or agency.
- b. That the Bidder and its principals have not within a 3-year period preceding this bid been convicted of or had a civil judgment rendered against them for commission of fraud or a criminal offense in connection with obtaining , attempting to obtain, or performing a public (Federal, State, or local) transaction or contract under a public transaction; violation of Federal or State antitrust statutes or commission of embezzlement, theft, forgery, bribery, falsification or destruction of records, making false statements, or receiving stolen property.
- c. That the Bidder and its principals are not presently indicted for or otherwise criminally or civilly charged by a governmental entity (Federal, State, or local) with commission of any of the offenses enumerated in paragraph b of this certification.
- d. That the Bidder and its principals have not within a 3-year period preceding this bid had one or more public transactions (Federal, State, or local) terminated for breach or default of a timber or forest product contract.

Bidders that cannot certify this requirement, in whole or in part, shall submit an explanation with their bid.

Scott Bowen
Director

TIMBER SALE INFORMATION

Scotch with a Splash of Jack (42-012-24)

T49N, R12W, SEC. 2.

Luce County (Advertised Price \$8,047.10)

SALE NOTE: No new roads will be permitted in any Payment Unit. All operations are limited to existing roads. Skid trails only will be allowed, including the creation of one or more turn arounds.

Road maintenance is required on this sale. See Sale Spec 4.2.3 for additional information.

Given justification, only one (1), one-year extension may be granted if the contract has been paid for in full.

A timber sale contract for this lump sum, sealed bid timber sale will be awarded to the responsible bidder offering the highest sealed bid price. All units of volume listed below were estimated using the Inventory Manager computer program and the new Michigan taper model. Bids must be at or above the following advertised price for each product and species:

<u>PRODUCTS & SPECIES</u>	<u>ESTIMATED UNITS*</u>	<u>ADVERTISED PRICE</u>
Pulpwood		
Balsam Fir	1 Cords	\$ 7.15 / Cord
Black Spruce	1 Cords	\$ 4.60 / Cord
Jack Pine	222 Cords	\$ 17.80 / Cord
Red Pine	1 Cords	\$ 49.95 / Cord
Scotch Pine	249 Cords	\$ 16.20 / Cord

* The total volume is statistically estimated within plus (+) or minus (-) 29.47 percent. There are an estimated 474 cords on this timber sale, plus or minus 140 cords at the 95% confidence level. The estimated units are final and not subject to adjustment. Prospective bidders are urged to examine this timber and to make their own estimates of quantity and quality.

BOND AND PAYMENT SCHEDULE:

1. A bond in the amount of \$402.00 to insure faithful performance of the conditions of the contract will be deposited by the successful bidder within 21 days of the sale award.
 2. Cutting in any sale or unit without the required advance payment would be considered a trespass.
 3. Total payment must be paid in advance or according to the following schedule :
 - (a) Ten percent (10%) of the sale value must be paid within 21 days of the sale award.
 - (b) The 10% down payment will be credited towards the first unit cut.
 - (c) Payment for each of the following units must be made before cutting begins in that unit:
- | PAYMENT UNIT NUMBER | PERCENT OF TOTAL SALE VALUE |
|---------------------|-----------------------------|
| 01 | 52.7% |
| 02 | 47.3% |
4. If no cutting takes place, the 10% down payment will not be refunded.
 5. Operations on the contract issued will terminate on 12/31/2028.

SALE STATISTICS

Volumes were calculated in cubic feet using the Michigan taper model. Cubic foot volume includes all wood inside bark for the product indicated. For display purposes, cubic feet were converted to cords and MBF using a simple conversion factor, e.g. 79 cubic feet per cord and 185 cubic feet per MBF. The cubic foot volumes are precise; the cords and MBF volumes are not. Cubic foot volume cannot be directly converted to cords or boards with precision.

SALE VOLUMES

The total estimated sale volume may not equal the sum of the species/products due to the nature of statistical calculations associated with double sampling methodology.

VOLUME			STATISTICAL RANGE IN CORDS	
TOTAL CUBIC FEET	TOTAL CORDS	PERCENT ERROR	MINIMUM	MAXIMUM
37,456	474	29.47%	334	614

VDU VOLUMES

A VDU is a Volume Determination Unit. Volumes and their associated statistics are calculated at the VDU level and summarized to the sale level. There is often a one to one relationship between a VDU and a Payment Unit, but not always, depending on the cruise design. Refer to the VDU TO PAYMENT UNIT table.

	VOLUME			RANGE IN CORDS	
VDU	TOTAL CUBIC FEET	TOTAL CORDS	PERCENT ERROR	MINIMUM	MAXIMUM
43	274	3	0.00%	3	3
45	37,182	471	29.47%	332	609
TOTAL:	37,456	474		335	613

VDU TO PAYMENT UNIT

When a VDU is associated with more than one Payment Unit (PU), the VDU volumes are assigned to the PU based on acres of the VDU within the PU.

VDU	VDU ACRES	PU	PU ACRES
43	0.4	2	0.4
45	17.5	1	9.3
45	17.5	2	8.2
TOTAL:	35.4		17.9

DESCRIPTION OF TIMBER BY PAYMENT UNIT (PU)

PU	MARKET GROUP	PRODUCT	QUANTITY	UNIT	ACRES	ADVERTISE PRICE
1	Jack Pine	Pulpwood	118	Cords	9.3	\$4,238.80
	Scotch Pine		132	Cords		
2	Balsam Fir	Pulpwood	1	Cords	8.6	\$3,808.30
	Black Spruce		1	Cords		
	Jack Pine		104	Cords		
	Red Pine		1	Cords		
	Scotch Pine		117	Cords		
TOTAL:			474	Cords		

Sale Specific Conditions & Requirements

Sale Name: Scotch with a Splash of Jack

Sale Number: 42-012-24 Seq#: 1

1 - Sale Area

1.2 - Boundaries

1.2.1 - Painted Boundaries (9/19)

The sale boundary and Payment Unit boundaries are marked and identified by red and yellow paint. Exterior sale boundary lines against state are marked with red paint. Interior Payment Unit boundaries are marked with yellow paint. The painted boundary line trees are not Included Timber and are to be protected unless marked with orange paint. Yellow painted trees designating an interior Payment Unit boundary are only to be cut when all surrounding Payment Units have been paid.

2 - Timber Specifications

2.1 - Included Timber

2.1.1 - Clearcut Unit(s) with Unmerchantable Trees (6/14)

Within Payment Unit(s) 1-2, cut all trees that are two (2) inches or more at DBH. Special protection trees identified in accordance with condition 3.4.2, within clearcutting unit boundaries, are not Included Timber and are to be protected. The trees to be protected are painted with green paint.

2.2 - Utilization

2.2.3 - Stump Heights (12/24)

Stump heights within the Sale Area shall not exceed six (6) inches for all trees. This is to facilitate reforestation operations.

3 - Payments

3.4 - Damaged Timber

3.4.2 - Special Protection Trees (1/25)

The Purchaser shall not cut live or dead special protection trees within cutting units or clearings. Special protection trees are marked with green paint. They are located near the Blind Sucker Campground Road and consist of various species. If Purchaser's operations have cut or damaged special protection trees through carelessness, the Purchaser shall pay triple stumpage as fixed, agreed and liquidated damages for each special protection tree cut or damaged. Such payment does not constitute ownership of the undesignated timber.

4 - Transportation

4.1 - Construction

4.1.3 - Slash and Earthen Piles (8/04)

Piles or windrows of earth along roads and landings that have been widened or constructed shall be leveled. Slash from road maintenance or construction, including stumps, shall be dispersed throughout the sale.

4.1.12 - No New Roads (1/12)

No new roads will be permitted in any Payment Unit. All operations are limited to existing roads. Skid trails only will be allowed, including the creation of one or more turn arounds.

4.2 - Maintenance

4.2.1 - Hauling Restriction (12/08)

Hauling may be restricted on forest roads (including Blind Sucker Campground #1 Access Road) by the Unit Manager or his/her representative. The restriction may occur during very dry or wet weather conditions or high public use.

4.2.2 - Fill Material (4/07)

To maintain roads, fill material may be needed in areas where "holes" exist or may be expected to develop. This fill material should be placed before trucking begins. Contact the Sale Administrator regarding the availability of onsite sand or gravel from adjacent State-owned lands.

4.2.3 - Road maintenance (8/13)

The following road maintenance is required: Within 30 days of completion of hauling, or if no hauling occurs for 30 days, the road must be maintained and graded. This includes cleaning of drainage areas, grading, crowning, and filling with gravel, if necessary. Damages will be assessed if grading/repair does not occur. In addition, leveling of the Blind Sucker Campground #1 Access Road will need to occur daily while active hauling is occurring. This is due to the high public use of this road.

4.2.4 - Grading (10/16)

For completion of the sale, state forest roads may need to be graded. In general, this will require a road grader or bulldozer to shape up the roads after forest products have been hauled off site. This includes cleaning of drainage areas, grading, crowning, and filling with gravel, if necessary. The grading equipment to be used must be approved by the Unit Manager or his/her representative.

4.2.5 - Two Wheel Drive Condition (2/04)

All existing trail roads on and adjacent to the Sale Area must be passable by two-wheel drive traffic for the duration of the sale.

5 - Operations

5.2 - Conduct of Operations

5.2.1 - Slash

5.2.1.8 - Slash Height (12/08)

No slash or treetops may exceed 24 inches in height.

5.2.2 - Hazard Trees/Snags

5.2.2.1 - Den Trees (10/16)

Obvious hollow and/or den trees shall be protected and left standing unless they are a safety hazard.

5.2.3 - Operating Restrictions

5.2.3.6 - Bark Beetle Restriction (1/25)

In the event drought creates a high risk of pine bark beetle infestation, pine is not to be cut during the period March 1 through July 1, unless all portions of trees greater than two (2) inches in diameter are removed from the Sale Area, reduced to chips, or treated to the satisfaction of the Unit Manager or his/her representative, within 15 days of being severed from the stump. Pine log decks, pulpwood piles and treetops that are piled for chipping in the fall or winter within a 1/4 mile of susceptible sites must be removed before March 15. Residual slash must not be placed in piles or rows and must be spread over the site for quick drying. The Department of Natural Resources will exercise this specification if the risk of damage warrants.

5.2.32 - Decking/Landing Restoration (9/13)

All decking and landing areas must have the surface area restored to a condition equal to or better than before. This is to ensure the proper regeneration of the stand. Wood debris, chips and "cookies" from trimmings must be removed or scattered away from landing and loading areas and may not be windrowed on the edge.

5.2.37 - No Decking Areas (12/08)

No decking is allowed within 50 feet of Blind Sucker Campground #1 Road without permission of the Unit Manager or his/her representative.

5.2.38 - No Decking Against Live Trees (2/04)

Cut products may not be decked against unmarked or designated leave trees.

5.4 - Soil Protection

5.4.1 - Rutting Restriction, General (7/16)

Operations are to cease immediately if equipment and weather conditions result in rutting of roads and/or skid trails which are 12 inches or greater in depth and 50 feet in length. The Unit Manager or his/her representative may restrict hauling and/or skidding if ruts exceed the specified depth. With the Unit Manager or his/her representative's approval, the Purchaser may return to the area when the risk of rutting has decreased.

5.4.3 - Erosion Control (12/08)

Skid trails or haul roads may require erosion control structures or berms per direction of the Unit Manager or his/her representative.

5.4.4 - Slope Protection (9/19)

Skid trails and roads on slopes shall be water barred with slash, stumps, and/or clean straw bales native to the area as soon as use is complete to prevent erosion. In addition, for all Payment Units, the sale falls in an area that has been designated as "Critical Dunes." Most slopes greater than 25% have been excluded from the sale. Do not operate equipment anywhere in these exclusion areas and keep all harvesting activity within the boundaries designated by red paint. In areas within the sale boundary where slopes are greater than 25%, trees can be harvested by reaching up from the bottom and down from the top through means of mechanized logging. Do not track up and down the slopes with equipment. This will be covered in greater detail at the pre-sale conference before cutting is allowed to begin. Special protection areas identified in accordance with condition 3.4.2, within clearcutting unit boundaries, are not Included Timber and are to be protected

5.4.5 - Soil Caution (11/04)

Care must be taken to minimize soil damage.

5.8 - Protection of Endangered Species

5.8.5 - Protection of Raptor Nests (3/13)

All trees with raptor nests will be protected if found during harvesting operations. Notification will be made to the Unit Manager or his/her representative who will notify the Wildlife Biologist so an onsite evaluation and recommendation can be made, if necessary.

6 - Safety and Fire Prevention

6.2 - Signing

6.2.1 - Road Posting (10/20)

The Purchaser is responsible for posting and maintaining caution signs on County Road 407 prior to beginning operations. The road must be posted at appropriate distances from the Sale Area to warn of logging activity and truck traffic. Signs must be removed when harvest operations are suspended or completed. The Purchaser will provide these signs.

7 - Other Conditions

7.2 - Extensions

7.2.1 - One Year Extension (2/04)

Given justification, only one (1), one-year extension may be granted if the contract has been paid for in full.



TIMBER SALE MAP

This information provided by authority of Part 525, 1994 PA 451, as amended.

Sale Number
42-012-24

Date
07/08/2024

Forest Management Unit
Newberry Mgt Unit

County
Luce

Mapped By: **A. Ciaramitaro**
Cruised By: **Newberry Unit Staff**

Scale
1:10,138

Page
1

Of
1

Township
49N
Range
12W
Section(s) and
Subdivision(s)
Sec. 2 S1/2NE,N1/2SE;

Cover Type

A = Aspen	J = Jack Pine	O = Oak	U = Upland Brush
B = Paper Birch	K = Rock	P = Lowland Poplar	UM = Upland Mix Forest
C = Cedar	L = Lowland Brush	Q = Mixed Swamp Conifer	V = Bog or Marsh
D = Treed Bog	LM = Lowland Mix Forest	R = Red Pine	W = White Pine
E = Swamp Hardwoods	M = Maple, Beech, Birch	S = Black Spruce	X = Non Stocked
F = Spruce/Fir	MC = Mixed Conifer	T = Tamarack	Y = Sand
G = Grass	MD = Mixed Deciduous		Z = Water
H = Hemlock	N = Marsh		

Density

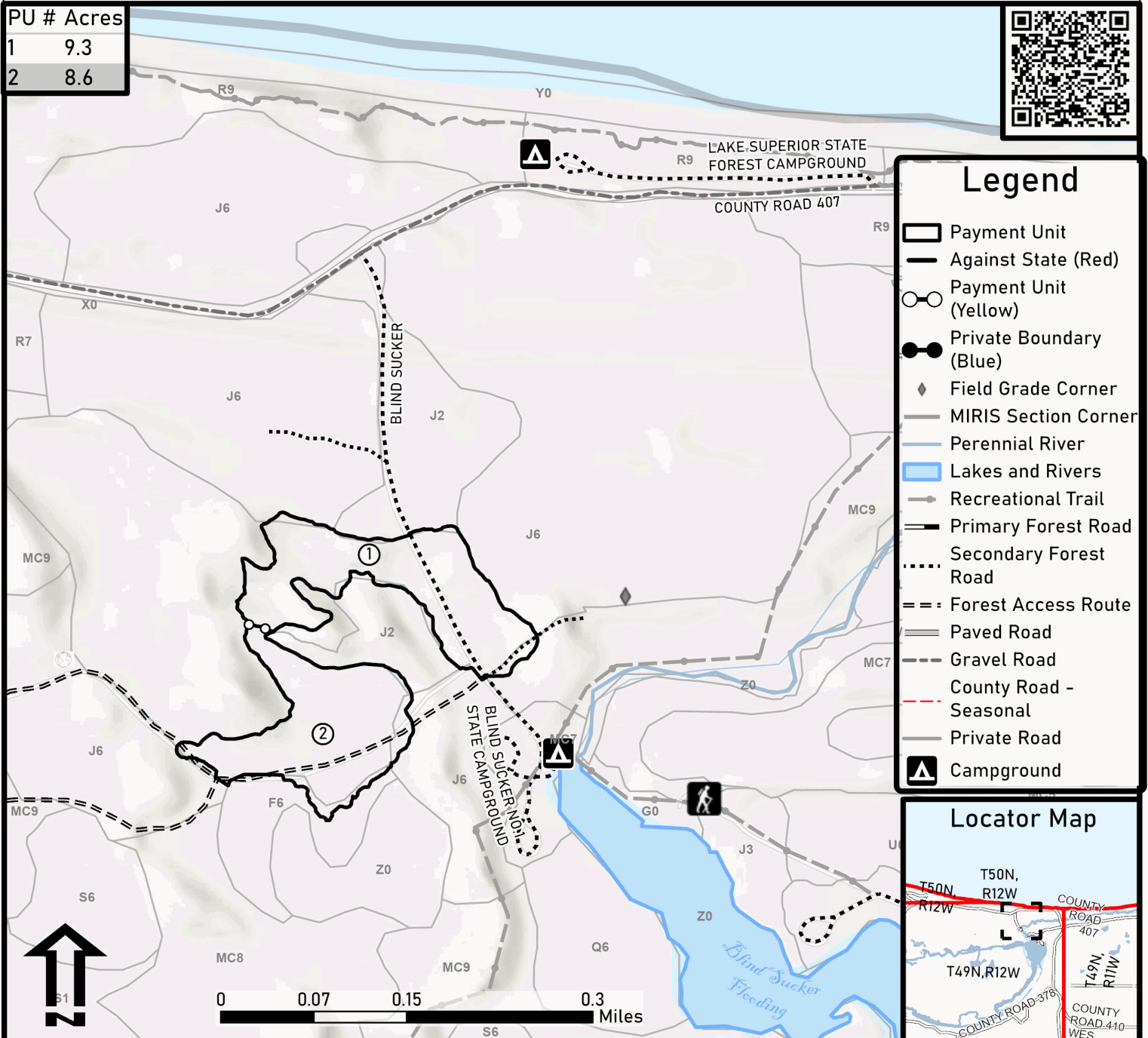
0 = Non Stocked	5 = Pole Timber Medium
1 = Seedling Sapling Poor	6 = Pole Timber Well
2 = Seedling Sapling Medium	7 = Saw Timber Poor
3 = Seedling Sapling Well	8 = Saw Timber Medium
4 = Pole Timber Poor	9 = Saw Timber Well

SCOTCH WITH A SPLASH OF JACK
Compartment: 42004 Acres: 17.9

PU # Acres

1 9.3

2 8.6



Legend

- Payment Unit
- Against State (Red)
- Payment Unit (Yellow)
- Private Boundary (Blue)
- Field Grade Corner
- MIRIS Section Corner
- Perennial River
- Lakes and Rivers
- Recreational Trail
- Primary Forest Road
- Secondary Forest Road
- Forest Access Route
- Paved Road
- Gravel Road
- County Road - Seasonal
- Private Road
- Campground

Locator Map



TIMBER SALE INFORMATION

Chris Brown Lake Jack Pine (42-014-24)
T49N, R10W, SEC. 24; T49N, R10W, SEC. 25.
Luce County (Advertised Price \$47,283.35)

SALE NOTE: One hundred yards of 3" minus gravel is required on Chris Brown Lake Road to fill holes in sandy sections.

No new roads will be permitted in any Payment Unit. All operations are limited to existing roads. Skid trails and stub turnarounds only will be allowed.

The Sale Area has received damage from some age mortality. The Purchaser should harvest the wood as soon as possible.

A timber sale contract for this lump sum, sealed bid timber sale will be awarded to the responsible bidder offering the highest sealed bid price. All units of volume listed below were estimated using the Inventory Manager computer program and the new Michigan taper model. Bids must be at or above the following advertised price for each product and species:

<u>PRODUCTS & SPECIES</u>	<u>ESTIMATED UNITS*</u>	<u>ADVERTISED PRICE</u>
Pulpwood		
Balsam Fir	44 Cords	\$ 6.70 / Cord
Black Spruce	21 Cords	\$ 4.30 / Cord
Jack Pine	1,722 Cords	\$ 16.60 / Cord
Mixed Hardwood	42 Cords	\$ 7.40 / Cord
Quaking Aspen	225 Cords	\$ 15.65 / Cord
Red Pine	204 Cords	\$ 46.65 / Cord
White Pine	394 Cords	\$ 12.60 / Cord

* The total volume is statistically estimated within plus (+) or minus (-) 15.39 percent. There are an estimated 2,652 cords on this timber sale, plus or minus 408 cords at the 95% confidence level. The estimated units are final and not subject to adjustment. Prospective bidders are urged to examine this timber and to make their own estimates of quantity and quality.

BOND AND PAYMENT SCHEDULE:

1. A bond in the amount of \$2,364.00 to insure faithful performance of the conditions of the contract will be deposited by the successful bidder within 21 days of the sale award.
2. Cutting in any sale or unit without the required advance payment would be considered a trespass.
3. Total payment must be paid in advance or according to the following schedule:
 - (a) Ten percent (10%) of the sale value must be paid within 21 days of the sale award.
 - (b) The 10% down payment will be credited towards the first unit cut.
 - (c) Payment for each of the following units must be made before cutting begins in that unit:

PAYMENT UNIT NUMBER	PERCENT OF TOTAL SALE VALUE
01	24.0%
02	32.6%
03	27.1%
04	4.4%
05	11.9%
4. If no cutting takes place, the 10% down payment will not be refunded.
5. Operations on the contract issued will terminate on 12/31/2028.

SALE STATISTICS

Volumes were calculated in cubic feet using the Michigan taper model. Cubic foot volume includes all wood inside bark for the product indicated. For display purposes, cubic feet were converted to cords and MBF using a simple conversion factor, e.g. 79 cubic feet per cord and 185 cubic feet per MBF. The cubic foot volumes are precise; the cords and MBF volumes are not. Cubic foot volume cannot be directly converted to cords or boards with precision.

SALE VOLUMES

The total estimated sale volume may not equal the sum of the species/products due to the nature of statistical calculations associated with double sampling methodology.

VOLUME			STATISTICAL RANGE IN CORDS	
TOTAL CUBIC FEET	TOTAL CORDS	PERCENT ERROR	MINIMUM	MAXIMUM
209,541	2,652	15.39%	2,244	3,061

VDU VOLUMES

A VDU is a Volume Determination Unit. Volumes and their associated statistics are calculated at the VDU level and summarized to the sale level. There is often a one to one relationship between a VDU and a Payment Unit, but not always, depending on the cruise design. Refer to the VDU TO PAYMENT UNIT table.

	VOLUME			RANGE IN CORDS	
VDU	TOTAL CUBIC FEET	TOTAL CORDS	PERCENT ERROR	MINIMUM	MAXIMUM
54	197,924	2,505	16.10%	2,102	2,909
70	11,617	147	49.23%	75	219
TOTAL:	209,541	2,652		2,177	3,128

VDU TO PAYMENT UNIT

When a VDU is associated with more than one Payment Unit (PU), the VDU volumes are assigned to the PU based on acres of the VDU within the PU.

VDU	VDU ACRES	PU	PU ACRES
54	109.8	1	27.6
54	109.8	2	37.3
54	109.8	3	31.2
54	109.8	5	13.7
70	6.9	4	6.9
TOTAL:	446.1		116.7

DESCRIPTION OF TIMBER BY PAYMENT UNIT (PU)

PU	MARKET GROUP	PRODUCT	QUANTITY	UNIT	ACRES	ADVERTISE PRICE
1	Balsam Fir Black Spruce Jack Pine Mixed Hardwood <i>Red Maple</i> Quaking Aspen <i>Quaking Aspen</i> Red Pine White Pine	Pulpwood	10 4 431 4 4 50 50 49 82	Cords Cords Cords Cords <i>Cords</i> Cords <i>Cords</i> Cords Cords	27.6	\$11,369.95
2	Balsam Fir Black Spruce Jack Pine Mixed Hardwood <i>Red Maple</i> Quaking Aspen <i>Quaking Aspen</i> Red Pine White Pine	Pulpwood	13 5 582 6 6 67 67 66 112	Cords Cords Cords Cords <i>Cords</i> Cords <i>Cords</i> Cords Cords	37.3	\$15,352.85
3	Balsam Fir Black Spruce Jack Pine Mixed Hardwood <i>Red Maple</i> Quaking Aspen <i>Quaking Aspen</i> Red Pine White Pine	Pulpwood	11 5 487 5 5 56 56 55 93	Cords Cords Cords Cords <i>Cords</i> Cords <i>Cords</i> Cords Cords	31.2	\$12,830.35
4	Balsam Fir Black Spruce Jack Pine Mixed Hardwood <i>Paper Birch</i> <i>Red Maple</i> Quaking Aspen <i>Quaking Aspen</i> <i>Quaking Aspen</i> Red Pine White Pine	Pulpwood <i>Sawtimber</i> <i>Pulpwood</i>	5 5 8 25 4 21 27 1.6 24 10 66	Cords Cords Cords Cords <i>Cords</i> <i>Cords</i> Cords <i>MBF</i> <i>Cords</i> Cords Cords	6.9	\$2,093.45
5	Balsam Fir Black Spruce Jack Pine Mixed Hardwood <i>Red Maple</i> Quaking Aspen <i>Quaking Aspen</i> Red Pine White Pine	Pulpwood	5 2 214 2 2 25 25 24 41	Cords Cords Cords Cords <i>Cords</i> Cords <i>Cords</i> Cords Cords	13.7	\$5,636.75
TOTAL:			2,652	Cords		

Sale Specific Conditions & Requirements

Sale Name: Chris Brown Lake Jack Pine

Sale Number: 42-014-24 Seq#: 1

1 - Sale Area

1.2 - Boundaries

1.2.1 - Painted Boundaries (9/19)

The sale boundary and Payment Unit boundaries are marked and identified red and yellow paint. Exterior sale boundary lines against state are marked with red paint. Interior Payment Unit boundaries are marked with yellow paint. Retention patches are marked with red paint; no harvesting activities may occur within these areas. The painted boundary line trees are not Included Timber and are to be protected. Yellow painted trees designating an interior Payment Unit boundary are only to be cut when all surrounding Payment Units have been paid.

2 - Timber Specifications

2.1 - Included Timber

2.1.1 - Clearcut Unit(s) with Unmerchantable Trees (6/14)

Within Payment Unit(s) 1-3 and 5, cut all trees that are two (2) inches or more at DBH except do not cut any trees marked with green paint above and below stump height.

2.1.7 - Leave Tree Marked Unit(s) (6/14)

Within Payment Unit(s) 4, all trees which meet minimum piece specifications in 2.2 Utilization, are designated for cutting. In addition, cut all trees that are two (2) inches or more at DBH. Do not cut any trees marked with green paint above and below stump height.

2.2 - Utilization

2.2.3 - Stump heights (4/07)

Stump heights within the Sale Area shall not exceed 12 inches for trees greater than 10 inches DBH and 4 inches for trees smaller than 10 inches DBH. This is to facilitate planting operations.

2.2.9 - No Chipping Permitted (12/08)

Within Payment Unit(s), all wood must be removed by whole tree, tree segment, or roundwood. No chipping is permitted.

3 - Payments

3.3 - Pre-measured Sales

3.3.4 - Dividing Payment Units (7/14)

Payment Unit(s) may be divided at the request of the Purchaser and upon approval of the Unit Manager. Dividing Payment Units is a contract modification which requires a Timber Sale Contract Amendment. There will be only one division per Payment Unit.

4 - Transportation

4.1 - Construction

4.1.3 - Slash and Earthen Piles (8/04)

Piles or windrows of earth along roads and landings that have been widened or constructed shall be leveled. Slash from road maintenance or construction, including stumps, shall be dispersed throughout the sale.

4.1.8 - Road Work (1) (8/07)

One hundred yards of 3" minus gravel is required on Chris Brown Lake Road to fill holes in sandy sections.

4.1.12 - No New Roads (1/12)

No new roads will be permitted in any Payment Unit. All operations are limited to existing roads. Skid trails and stub turnarounds only will be allowed.

4.2 - Maintenance

4.2.3 - Road maintenance (8/13)

The following road maintenance is required: Within 60 days of completion of hauling, or if no hauling occurs for 60 days, Chris Brown Road must be maintained and graded. This includes cleaning of drainage areas, grading, crowning and filling with gravel, if necessary. Damages will be assessed if grading/repair does not occur.

4.2.5 - Two Wheel Drive Condition (2/04)

All existing trail roads on and adjacent to the Sale Area must be passable by two-wheel drive traffic for the duration of the sale.

5 - Operations

5.2 - Conduct of Operations

5.2.1 - Slash

5.2.1.8 - Slash Height (12/08)

No slash or tree tops may exceed 24 inches in height.

5.2.1.11 - Slash for Reforestation (3/21)

To facilitate reforestation, the Sale Area shall be left with slash evenly distributed. Bunched tops within the cutting area shall be broken up and scattered. Stumps shall be cut low to the ground. Processing sites shall not be left with a compacted layer of slash; tops from these sites shall be hauled back into the cut area and scattered.

5.2.2 - Hazard Trees/Snags

5.2.2.1 - Den Trees (10/16)

Obvious hollow and/or den trees shall be protected and left standing unless they are a safety hazard.

5.2.3 - Operating Restrictions

5.2.3.6 - Bark Beetle Restriction (12/08)

In the event drought creates a high risk of pine bark beetle infestation, pine is not to be cut during the period March 1 through July 1, unless all portions of trees greater than two inches in diameter are removed from the sale area, reduced to chips, or treated to the satisfaction of the Unit Manager or his/her representative, within fifteen days of being severed from the stump. Pine log decks, pulpwood piles and treetops that are piled for chipping in the fall or winter within a 1/4 mile of susceptible sites must be removed before March 15. Residual slash must not be placed in piles or rows and must be spread over the site for quick drying. The Department of Natural Resources will exercise this specification if the risk of damage warrants.

5.2.3.2 - Decking/Landing Restoration (9/13)

All decking and landing areas must have the surface area restored to a condition equal to or better than before. This is to ensure the proper regeneration of the stand. Wood debris, chips and "cookies" from trimmings must be removed or scattered away from landing and loading areas and may not be windrowed on the edge.

5.5 - Protection of Improvements

5.5.3 - Protection of Improvements Detail (10/13)

Use caution along Chris Brown Lake Road as there are buried phone lines with above ground junction boxes.

5.8 - Protection of Endangered Species

5.8.5 - Protection of Raptor Nests (3/13)

All trees with raptor nests will be protected if found during harvesting operations. Notification will be made to the Unit Manager or his/her representative who will notify the Wildlife Biologist so an onsite evaluation and recommendation can be made, if necessary.

6 - Safety and Fire Prevention

6.2 - Signing

6.2.1 - Road Posting (10/20)

The Purchaser is responsible for posting and maintaining caution signs on Chris Brown Lake Road prior to beginning

operations. The road must be posted at appropriate distances from the Sale Area to warn of logging activity and truck traffic. Signs must be removed when harvest operations are suspended or completed. The Purchaser will provide these signs.

7 - Other Conditions

7.3 - Contract Modifications

7.3.3 - Modification for Reforestation (8/05)

When contractual work of Purchaser has been accepted for any Payment Unit identified on Sale Area Map, Payment Unit will be eliminated from the Sale Area on written notice so that reforestation operations can begin.

7.5 - Loss

7.5.1 - Deteriorating Timber (7/09)

The Sale Area has received damage from some age mortality. The Purchaser should harvest the wood as soon as possible. The Department of Natural Resources is held free of responsibility of any further damage or deterioration due to delay in harvesting.



TIMBER SALE MAP

This information provided by authority of Part 525, 1994 PA 451, as amended.

Sale Number

42-014-24

Date

08/30/2024

Forest Management Unit

Newberry Mgt Unit

County

Luce

Mapped By: N Wheeler

Cruised By: Newberry Unit Staff

Scale

1:15,840

Page

1

Of

1

Township
49N

Range
10W

Section(s) and
Subdivision(s)

Sec. 24 SWSW; Sec. 25 NW,N1/2SW,SWSW;

Cover Type

A = Aspen	J = Jack Pine	O = Oak	U = Upland Brush
B = Paper Birch	K = Rock	P = Lowland Poplar	UM = Upland Mix Forest
C = Cedar	L = Lowland Brush	Q = Mixed Swamp Conifer	V = Bog or Marsh
D = Treed Bog	LM = Lowland Mix Forest	R = Red Pine	W = White Pine
E = Swamp Hardwoods	M = Maple, Beech, Birch	S = Black Spruce	X = Non Stocked
F = Spruce/Fir	MC = Mixed Conifer	T = Tamarack	Y = Sand
G = Grass	MD = Mixed Deciduous	Z = Water	
H = Hemlock	N = Marsh		

Density

0 = Non Stocked	5 = Pole Timber Medium
1 = Seedling Sapling Poor	6 = Pole Timber Well
2 = Seedling Sapling Medium	7 = Saw Timber Poor
3 = Seedling Sapling Well	8 = Saw Timber Medium
4 = Pole Timber Poor	9 = Saw Timber Well

CHRIS BROWN LAKE JACK PINE

Compartment: 42031 Acres: 116.7

PU #	Acres	PU #	Acres
1	27.6	4	6.9
2	37.2	5	13.7
3	31.2		



Legend

- Payment Unit
- Against State (Red)
- Payment Unit (Yellow)
- Private Boundary (Blue)
- Survey Grade Corner
- Field Grade Corner
- MIRIS Section Corner
- Perennial River
- Lakes and Rivers
- Primary Forest Road
- Secondary Forest Road
- Forest Access Route
- Retention

Locator Map



TIMBER SALE INFORMATION

Blue Line Bonanza (42-016-24)

T48N, R06W, SEC. 6; T48N, R07W, SEC. 1.
Chippewa County (Advertised Price \$40,398.85)

SALE NOTE: Roads may require the installation of culverts for cross drainage or at natural drainage-ways. See Sale Spec 4.1.5 for additional information.

Permission for access across private land is the responsibility of the Purchaser. A copy of the written permission from the private landowner must be given to the Unit Manager PRIOR to bid opening, or the bid will not be accepted.

It is recommended that within Payment Units 3 and 5-17, harvesting occur during dry summer or frozen winter conditions because of low, wet ground.

Some roads or skid trails require extra protection such as that afforded by interlocking composite mats or another approved system . If available, mats may be borrowed from the DNR. See Sale Spec 5.2.17 for additional information.

Access may be through private land.

A timber sale contract for this lump sum, sealed bid timber sale will be awarded to the responsible bidder offering the highest sealed bid price. All units of volume listed below were estimated using the Inventory Manager computer program and the new Michigan taper model. Bids must be at or above the following advertised price for each product and species:

<u>PRODUCTS & SPECIES</u>	<u>ESTIMATED UNITS*</u>		<u>ADVERTISED PRICE</u>
Sawtimber			
Paper Birch	18.0	MBF	\$ 28.00 / MBF
Red Maple	30.2	MBF	\$ 21.00 / MBF
Pulpwood			
Balsam Fir	418	Cords	\$ 5.75 / Cord
Black Spruce	1,266	Cords	\$ 3.70 / Cord
Jack Pine	88	Cords	\$ 14.25 / Cord
Mixed Aspen	1,001	Cords	\$ 13.40 / Cord
Mixed Hardwood	2,061	Cords	\$ 6.35 / Cord
Red Pine	81	Cords	\$ 40.00 / Cord
Tamarack	6	Cords	\$ 3.65 / Cord
White Pine	6	Cords	\$ 10.80 / Cord
White Spruce	295	Cords	\$ 3.70 / Cord

* The total volume is statistically estimated within plus (+) or minus (-) 11.33 percent. There are an estimated 5,331 cords on this timber sale, plus or minus 604 cords at the 95% confidence level. The estimated units are final and not subject to adjustment. Prospective bidders are urged to examine this timber and to make their own estimates of quantity and quality.

BOND AND PAYMENT SCHEDULE:

1. A bond in the amount of \$2,020.00 to insure faithful performance of the conditions of the contract will be deposited by the successful bidder within 21 days of the sale award.
2. Cutting in any sale or unit without the required advance payment would be considered a trespass.
3. Total payment must be paid in advance or according to the following schedule :
 - (a) Ten percent (10%) of the sale value must be paid within 21 days of the sale award.
 - (b) The 10% down payment will be credited towards the first unit cut.

(c) Payment for each of the following units must be made before cutting begins in that unit:

PAYMENT UNIT NUMBER	PERCENT OF TOTAL SALE VALUE
01	5.1%
02	11.9%
03	1.2%
04	3.8%
05	3.3%
06	6.3%
07	4.1%
08	4.5%
09	8.3%
10	5.5%
11	2.3%
12	11.0%
13	11.8%
14	6.6%
15	2.4%
16	5.9%
17	6.0%

4. If no cutting takes place, the 10% down payment will not be refunded.

5. Operations on the contract issued will terminate on 06/30/2029.

SALE STATISTICS

Volumes were calculated in cubic feet using the Michigan taper model. Cubic foot volume includes all wood inside bark for the product indicated. For display purposes, cubic feet were converted to cords and MBF using a simple conversion factor, e.g. 79 cubic feet per cord and 185 cubic feet per MBF. The cubic foot volumes are precise; the cords and MBF volumes are not. Cubic foot volume cannot be directly converted to cords or boards with precision.

SALE VOLUMES

The total estimated sale volume may not equal the sum of the species/products due to the nature of statistical calculations associated with double sampling methodology.

VOLUME			STATISTICAL RANGE IN CORDS	
TOTAL CUBIC FEET	TOTAL CORDS	PERCENT ERROR	MINIMUM	MAXIMUM
421,152	5,331	11.33%	4,727	5,935

VDU VOLUMES

A VDU is a Volume Determination Unit. Volumes and their associated statistics are calculated at the VDU level and summarized to the sale level. There is often a one to one relationship between a VDU and a Payment Unit, but not always, depending on the cruise design. Refer to the VDU TO PAYMENT UNIT table.

	VOLUME			RANGE IN CORDS	
VDU	TOTAL CUBIC FEET	TOTAL CORDS	PERCENT ERROR	MINIMUM	MAXIMUM
65	16,690	211	60.77%	83	340
69	20,485	259	49.05%	132	386
70	4,761	60	60.60%	24	97
72	29,244	370	37.02%	233	507
75	9,862	125	133.24%	0	291
78	107,388	1,359	25.28%	1,016	1,703
79	10,094	128	54.06%	59	197
80	21,259	269	31.24%	185	353
81	31,037	393	35.73%	253	533
82	124,645	1,578	23.43%	1,208	1,947
84	45,688	578	29.19%	410	747
TOTAL:	421,152	5,331		3,601	7,102

VDU TO PAYMENT UNIT

When a VDU is associated with more than one Payment Unit (PU), the VDU volumes are assigned to the PU based on acres of the VDU within the PU.

VDU	VDU ACRES	PU	PU ACRES
65	9.6	1	5.0
65	9.6	2	4.6
69	13.8	5	13.8
70	7.3	4	7.3
72	20.2	2	20.2
75	4.3	7	4.3
78	65.9	6	20.7
78	65.9	9	27.2
78	65.9	10	18.0
79	9.3	3	9.3
80	10.3	8	10.3
81	25.9	11	12.5
81	25.9	15	13.4
82	54.0	12	20.1
82	54.0	13	21.8
82	54.0	14	12.1
84	26.9	16	13.4
84	26.9	17	13.5
TOTAL:	549.7		247.5

DESCRIPTION OF TIMBER BY PAYMENT UNIT (PU)

PU	MARKET GROUP	PRODUCT	QUANTITY	UNIT	ACRES	ADVERTISE PRICE
1	Paper Birch	Sawtimber	0.8	MBF	5.0	\$2,042.40
	Balsam Fir	Pulpwood	2	Cords		
	Mixed Aspen		56	Cords		
	<i>B. T. Aspen</i>		56	<i>Cords</i>		
	Mixed Hardwood		20	Cords		
	<i>Paper Birch</i>		7	<i>Cords</i>		
	<i>Red Maple</i>		13	<i>Cords</i>		
	Red Pine		28	Cords		
	White Spruce		3	Cords		
2	Paper Birch	Sawtimber	3.3	MBF	24.8	\$4,798.70
	Balsam Fir	Pulpwood	29	Cords		
	Black Spruce		106	Cords		
	Jack Pine		81	Cords		
	Mixed Aspen		92	Cords		
	<i>B. T. Aspen</i>		85	<i>Cords</i>		
	<i>Quaking Aspen</i>		7	<i>Cords</i>		
	Mixed Hardwood		104	Cords		
	<i>Paper Birch</i>		39	<i>Cords</i>		
	<i>Red Maple</i>		65	<i>Cords</i>		
	Red Pine		25	Cords		
	White Spruce		27	Cords		
3	Black Spruce	Pulpwood	123	Cords	9.3	\$486.85
	Mixed Hardwood		5	Cords		
	<i>Paper Birch</i>		5	<i>Cords</i>		
4	Black Spruce	Pulpwood	3	Cords	7.3	\$1,515.70
	Jack Pine		7	Cords		
	Mixed Aspen		15	Cords		
	<i>B. T. Aspen</i>		15	<i>Cords</i>		
	Mixed Hardwood		3	Cords		
	<i>Paper Birch</i>		3	<i>Cords</i>		
	Red Pine		28	Cords		
	White Pine		6	Cords		
5	Red Maple	Sawtimber	2.2	MBF	13.8	\$1,340.70
	Balsam Fir	Pulpwood	14	Cords		
	Black Spruce		116	Cords		
	Mixed Aspen		7	Cords		
	<i>B. T. Aspen</i>		7	<i>Cords</i>		
	Mixed Hardwood		96	Cords		
	<i>Paper Birch</i>		33	<i>Cords</i>		
	<i>Red Maple</i>		63	<i>Cords</i>		
	White Spruce		22	Cords		
6	Paper Birch	Sawtimber	2.1	MBF	20.7	\$2,546.85
	Red Maple		2.0	MBF		
	Balsam Fir	Pulpwood	47	Cords		
	Black Spruce		118	Cords		
	Mixed Aspen		34	Cords		
	<i>B. T. Aspen</i>		24	<i>Cords</i>		
	<i>Quaking Aspen</i>		10	<i>Cords</i>		
	Mixed Hardwood		180	Cords		
	<i>Paper Birch</i>		42	<i>Cords</i>		
	<i>Red Maple</i>		138	<i>Cords</i>		
	White Spruce		38	Cords		
7	Mixed Aspen	Pulpwood	125	Cords	4.3	\$1,675.00
	<i>B. T. Aspen</i>		125	<i>Cords</i>		
8	Paper Birch	Sawtimber	1.2	MBF	10.3	\$1,800.95

DESCRIPTION OF TIMBER BY PAYMENT UNIT (PU), CON'T

PU	MARKET GROUP	PRODUCT	QUANTITY	UNIT	ACRES	ADVERTISE PRICE
8 con't	Red Maple	Sawtimber	5.4	MBF		
	Balsam Fir	Pulpwood	25	Cords		
	Black Spruce		9	Cords		
	Mixed Aspen		29	Cords		
	<i>Quaking Aspen</i>		29	<i>Cords</i>		
	Mixed Hardwood		144	Cords		
	<i>Black Ash</i>		8	<i>Cords</i>		
	<i>Paper Birch</i>		35	<i>Cords</i>		
	<i>Red Maple</i>		101	<i>Cords</i>		
	White Spruce		47	Cords		
9	Paper Birch	Sawtimber	2.8	MBF	27.2	\$3,347.70
	Red Maple		2.6	MBF		
	Balsam Fir	Pulpwood	64	Cords		
	Black Spruce		154	Cords		
	Mixed Aspen		44	Cords		
	<i>B. T. Aspen</i>		31	<i>Cords</i>		
	<i>Quaking Aspen</i>		13	<i>Cords</i>		
	Mixed Hardwood		236	Cords		
	<i>Paper Birch</i>		55	<i>Cords</i>		
	<i>Red Maple</i>		181	<i>Cords</i>		
	White Spruce		51	Cords		
10	Paper Birch	Sawtimber	1.9	MBF	18.0	\$2,209.70
	Red Maple		1.7	MBF		
	Balsam Fir	Pulpwood	41	Cords		
	Black Spruce		102	Cords		
	Mixed Aspen		29	Cords		
	<i>B. T. Aspen</i>		21	<i>Cords</i>		
	<i>Quaking Aspen</i>		8	<i>Cords</i>		
	Mixed Hardwood		157	Cords		
	<i>Paper Birch</i>		37	<i>Cords</i>		
	<i>Red Maple</i>		120	<i>Cords</i>		
	White Spruce		33	Cords		
11	Balsam Fir	Pulpwood	12	Cords	12.5	\$911.15
	Black Spruce		137	Cords		
	Mixed Aspen		12	Cords		
	<i>B. T. Aspen</i>		12	<i>Cords</i>		
	Mixed Hardwood		24	Cords		
	<i>Black Ash</i>		1	<i>Cords</i>		
	<i>Paper Birch</i>		10	<i>Cords</i>		
	<i>Red Maple</i>		13	<i>Cords</i>		
	Tamarack		3	Cords		
	White Spruce		3	Cords		
12	Paper Birch	Sawtimber	2.2	MBF	20.1	\$4,448.50
	Red Maple		3.8	MBF		
	Balsam Fir	Pulpwood	45	Cords		
	Black Spruce		86	Cords		
	Mixed Aspen		137	Cords		
	<i>Quaking Aspen</i>		137	<i>Cords</i>		
	Mixed Hardwood		289	Cords		
	<i>Paper Birch</i>		83	<i>Cords</i>		
	<i>Red Maple</i>		206	<i>Cords</i>		
	White Spruce		16	Cords		
13	Paper Birch	Sawtimber	2.4	MBF	21.8	\$4,818.60
	Red Maple		4.2	MBF		
	Balsam Fir	Pulpwood	49	Cords		
	Black Spruce		93	Cords		

DESCRIPTION OF TIMBER BY PAYMENT UNIT (PU), CON'T

PU	MARKET GROUP	PRODUCT	QUANTITY	UNIT	ACRES	ADVERTISE PRICE
13 con't	Mixed Aspen <i>Quaking Aspen</i> Mixed Hardwood <i>Paper Birch</i> <i>Red Maple</i> White Spruce	Pulpwood	148 148 313 90 223 18	Cords Cords Cords Cords Cords Cords		
14	Paper Birch Red Maple Balsam Fir Black Spruce Mixed Aspen <i>Quaking Aspen</i> Mixed Hardwood <i>Paper Birch</i> <i>Red Maple</i> White Spruce	Sawtimber Pulpwood	1.3 2.3 27 52 82 82 174 50 124 10	MBF MBF Cords Cords Cords Cords Cords Cords Cords Cords	12.1	\$2,673.05
15	Balsam Fir Black Spruce Mixed Aspen <i>B. T. Aspen</i> Mixed Hardwood <i>Black Ash</i> <i>Paper Birch</i> <i>Red Maple</i> Tamarack White Spruce	Pulpwood	12 146 13 13 25 1 10 14 3 3	Cords Cords Cords Cords Cords Cords Cords Cords Cords Cords	13.4	\$964.20
16	Red Maple Balsam Fir Black Spruce Mixed Aspen <i>B. T. Aspen</i> <i>Quaking Aspen</i> Mixed Hardwood <i>Paper Birch</i> <i>Red Maple</i> White Spruce	Sawtimber Pulpwood	3.0 25 10 88 77 11 145 51 94 12	MBF Cords Cords Cords Cords Cords Cords Cords Cords Cords	13.4	\$2,388.10
17	Red Maple Balsam Fir Black Spruce Mixed Aspen <i>B. T. Aspen</i> <i>Quaking Aspen</i> Mixed Hardwood <i>Paper Birch</i> <i>Red Maple</i> White Spruce	Sawtimber Pulpwood	3.0 26 11 90 78 12 146 51 95 12	MBF Cords Cords Cords Cords Cords Cords Cords Cords Cords	13.5	\$2,430.70
TOTAL:			48.2	MBF		
TOTAL:			5,222	Cords		

Sale Specific Conditions & Requirements

Sale Name: Blue Line Bonanza

Sale Number: 42-016-24 Seq#: 1

1 - Sale Area

1.2 - Boundaries

1.2.1 - Painted Boundaries (9/19)

The sale boundary and Payment Unit boundaries are marked and identified by blue, red and yellow paint. Exterior sale boundary lines against private property are marked with blue paint. Exterior sale boundary lines against state are marked with red paint. Interior Payment Unit boundaries are marked with yellow paint. Retention patches are marked with red paint; no harvesting activities may occur within these areas. The painted boundary line trees are not Included Timber and are to be protected unless marked with orange paint. Yellow painted trees designating an interior Payment Unit boundary are NOT to be cut.

2 - Timber Specifications

2.1 - Included Timber

2.1.2 - Clearcut Unit(s) w/o Unmerchantable Trees (8/11)

Within Payment Unit(s) 3, and 5-17, cut all trees which meet minimum piece specifications in 2.2 Utilization, except do not cut any hemlock, cedar, oak, or yellow birch. In addition, do not cut any trees marked in blue, red, green, or yellow paint. Furthermore, red and white pine that are marked with orange paint are designated for cutting.

2.1.3 - Cut Tree Marked Unit(s) (12/08)

Within Payment Unit(s) 1 and 4, all trees are designated for cutting when marked with orange paint above and below stump height, regardless of merchantability. In addition, do not cut any hemlock, cedar, oak, or yellow birch. Furthermore, do not cut any trees marked with blue, red, green, or yellow paint. If Payment Units 1 and 4 cannot be harvested due to difficult access, the Purchaser can opt to drop the Payment Unit from the sale via a Timber Sale Contract Amendment.

2.1.7 - Leave Tree Marked Unit(s) (6/14)

Within Payment Unit(s) 2, all trees, which meet minimum piece specifications in 2.2 Utilization, are designated for cutting, except do not cut any hemlock, cedar, oak, or yellow birch. In addition, do not cut any trees marked with blue, red, green, or yellow paint. Furthermore, red and white pine that are marked with orange paint are designated for cutting.

4 - Transportation

4.1 - Construction

4.1.4 - Timber Removed for Construction (3/23)

Trees cut or damaged in the process of pre-approved road, landing, or skid trail construction will be decked in an area separate from other Designated Timber and not removed until measured by the Sale Administrator. Payment will be made at contract prices or average prices, if not on the contract.

4.1.5 - Culverts (5/14)

Roads may require the installation of culverts for cross drainage or at natural drainage-ways. If culverts are needed in these locations, their placement will be specified by the Sale Administrator, and they shall be installed prior to hauling. The culverts shall be new, corrugated metal or plastic gauge. Culverts will be a minimum of 12 inches in diameter and 24 feet in length. If culverts are removed, fill shall be removed from wetland soils as specified. Soils shall be maintained and left in a non-erodible condition, with water bars, seed, fertilizer, mulch, and slash installed as directed by the Sale Administrator and as specified in the BMP manual. Stream crossing permits, if needed, will be obtained by the DNR.

4.1.6 - Road Construction (4/24)

Construction of new roads or improvements of existing roads shall be done in such a way as to minimize the environmental and visual impacts. Merchantable trees shall be cut and utilized unless otherwise directed. Non-merchantable trees shall be severed and laid flat on the ground. Slash shall be scattered, and not left in windrows and kept a minimum of 10 feet back from the road edge. Stumps shall be set upright, not left on edge, and be moved at least 10 feet away from the road edge. Disturbed soil shall be feathered into the woods and not left in berms or windrows.

4.1.7 - Road Closure (10/11)

All new roads built into the sale must be blocked to vehicle traffic upon completion of the sale. Overgrown roads that are reopened shall be considered new roads. In general, this will require constructing a four (4') foot high berm of stumps and logs covered with earth. Stumps and brush must be placed along the remainder of the trail. All stumps from road building and landing construction must be reserved to block any newly constructed roads upon completion of the sale. These stumps must be scattered along the road system to prohibit vehicular movement.

4.2 - Maintenance

4.2.1 - Hauling Restriction (12/08)

Hauling may be restricted on forest roads by the Unit Manager or his/her representative. The restriction may occur during spring breakup or occur during wet weather conditions.

4.2.2 - Fill Material (4/07)

To maintain roads, fill material may be needed in areas where "holes" exist or may be expected to develop. This fill material should be placed before trucking begins. Contact the Sale Administrator regarding the availability of onsite sand or gravel from adjacent State-owned lands.

4.2.3 - Road maintenance (8/13)

The following road maintenance may be needed on State of Michigan roads: cleaning of drainages, grading, crowning and filling with gravel where necessary. Damages will be assessed if grading/repair of state managed roads does not occur.

4.2.4 - Grading (10/16)

For completion of the sale, state forest roads must be graded. In general, this will require a road grader or bulldozer to shape up the roads after forest products have been hauled off site. This includes cleaning of drainage areas, grading, crowning and filling with gravel, if necessary. The grading equipment to be used must be approved by the Unit Manager or his/her representative.

4.4 - Access

4.4.1 - Private property access (3/11)

Permission for access across private land is the responsibility of the Purchaser. A copy of the written permission from the private landowner must be given to the Unit Manager prior to bid opening or the bid will not be accepted.

Access will be through Hiawatha Hunt Club to the south of the sale. Contact Sale Administrator for contact information.

4.4.3 - Access gate (12/08)

The access gate must be locked at the completion of each day unless otherwise approved by the Unit Manager or his/her representative.

5 - Operations

5.1 - Notification

5.1.1 - Pre-sale Conference (10/16)

A pre-sale conference between the Purchaser and Sale Administrator is required prior to beginning any operations to determine landing and road locations. The Unit Manager or his/her representative must be contacted at least 10 days in advance to schedule the conference.

5.1.4 - Post-Sale Conference (10/16)

A post-sale conference on site between the Purchaser and sale administrator is required 5 days prior to the completion of active logging operations to determine clean-up and repair of landings, road edges, and the fulfillment of other contract specifications.

5.2 - Conduct of Operations

5.2.2 - Hazard Trees/Snags

5.2.2.1 - Den Trees (10/16)

Obvious hollow and/or den trees shall be protected and left standing unless they are a safety hazard.

5.2.3 - Operating Restrictions

5.2.3.6 - Bark Beetle Restriction (12/08)

In the event drought creates a high risk of pine bark beetle infestation, pine is not to be cut during the period March 1 through July 1, unless all portions of trees greater than two inches in diameter are removed from the sale area, reduced to chips, or treated to the satisfaction of the Unit Manager or his/her representative, within fifteen days of being severed from the stump. Pine log decks, pulpwood piles and treetops that are piled for chipping in the fall or winter within a 1/4 mile of susceptible sites must be removed before March 15. Residual slash must not be placed in piles or rows and must be spread over the site for quick drying. The Department of Natural Resources will exercise this specification if the risk of damage warrants.

5.2.4 - Dead and Down Creation

5.2.4.4 - Dead and Down Creation, Grouse (6/18)

To encourage grouse and other wildlife, in Payment Unit(s) 12-14 and 16-17 leave a 15-inch diameter or larger grouse drumming log (8-10 foot or greater in length) flat on the ground next to a tall stump at least 3 feet high. A total of 6 drumming logs should be placed; 3 near the adjacent lowlands to the south for Payment Units 12-14 and 3 along the North & East in Payment Units 16-17. The logs will be evenly scattered along the edges of these units. Logs can be an unmerchantable piece or a full tree. Each drumming log must be clearly identifiable by Sale Administrators. Please contact the Sale Administrator for more information.

5.2.17 - Timber Mats and Interlocking Composite Mats (5/23)

Some roads or skid trails require extra protection such as that afforded by interlocking composite mats or another approved system. If available, mats may be borrowed from the DNR. A Timber Sale Contract Amendment will be used to document the Purchaser's use of the DNR's mats. Contact the Sale Administrator regarding availability and pick-up. Composite mats are only available from the Grayling field office and the Marquette ICC. The Purchaser is responsible for picking up and hauling the mats to and from the site. The composite mats will require DNR staff onsite for installation and removal. Contact the Sale Administrator to schedule at least 30 days before desired install/removal date. All mats must be cleaned prior to drop off. This may include, but is not limited to, power washing and brushing to remove mud and debris. A charge of \$2,000.00 per composite mat will be assessed for all damaged or non-returned mats. Damage for the composite mats is defined as cracked or broken mats.

5.2.22 - Operating Caution

5.2.22.1 - Operating Caution (6/11)

It is recommended, but not required, that within Payment Unit(s) 3 and 5- 17, cutting, skidding, and hauling occur during dry summer or frozen winter conditions. The reason for the recommendation is because low wet ground.

5.2.32 - Decking/Landing Restoration (9/13)

All decking and landing areas must have the surface area restored to a condition equal to or better than before. This is to ensure the proper regeneration of the stand. Wood debris, chips and "cookies" from trimmings must be removed or scattered away from landing and loading areas and may not be windrowed on the edge.

5.2.38 - No Decking Against Live Trees (2/04)

Cut products may not be decked against unmarked or designated leave trees.

5.4 - Soil Protection

5.4.1 - Rutting Restriction, General (7/16)

Operations are to cease immediately if equipment and weather conditions result in rutting of roads and/or skid trails which is 12 inches or greater in depth and 50 feet in length. The Unit Manager or his/her representative may restrict hauling and/or skidding if ruts exceed the specified depth. With the Unit Manager or his/her representative's approval, the Purchaser may return to the area when the risk of rutting has decreased.

5.4.2 - Skid Trails (2/04)

Skid trails up and down slopes should be avoided. If, however, this is unavoidable, these trails will be left in a non-erodible condition using water bars, logs, and slash. Placing of slash on these skid trails while logging is ongoing may alleviate need for any further action. At the direction of the Sale Administrator, seed, fertilizer, and mulch may also be required.

5.4.4 - Slope Protection (9/19)

Skid trails and roads on slopes shall be water barred with slash, stumps, and/or clean straw bales native to the area as soon as

use is complete to prevent erosion.

5.8 - Protection of Endangered Species

5.8.5 - Protection of Raptor Nests (3/13)

All trees with raptor nests will be protected if found during harvesting operations. Notification will be made to the Unit Manager or his/her representative who will notify the Wildlife Biologist so an onsite evaluation and recommendation can be made, if necessary.

6 - Safety and Fire Prevention

6.2 - Signing

6.2.1 - Road Posting (10/20)

The Purchaser is responsible for posting and maintaining caution signs on Tahqua Trail prior to beginning operations. The road must be posted at appropriate distances from the Sale Area to warn of logging activity and truck traffic. Signs must be removed when harvest operations are suspended or completed. The Purchaser will provide these signs.



TIMBER SALE MAP

This information provided by authority of Part 525, 1994 PA 451, as amended.

Sale Number

42-016-24

Date

08/30/2024

Forest Management Unit

Newberry Mgt Unit

County

Chippewa

Mapped By: Payment

Cruised By: Grossman Forestry

Scale

1:15,840

Page

1

Of

1

Township
48N

Range
06W /

Section(s) and

Subdivision(s) Sec. 1 E1/2NE; Sec. 6 N1/2NW,SWNW,SW,NWSE;

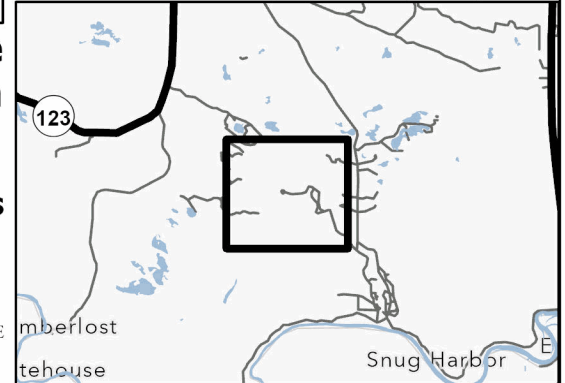
Cover Type

A = Aspen	J = Jack Pine	O = Oak	U = Upland Brush
B = Paper Birch	K = Rock	P = Lowland Poplar	UM = Upland Mix Forest
C = Cedar	L = Lowland Brush	Q = Mixed Swamp Conifer	V = Bog or Marsh
D = Treed Bog	LM = Lowland Mix Forest	R = Red Pine	W = White Pine
E = Swamp Hardwoods	M = Maple, Beech, Birch	S = Black Spruce	X = Non Stocked
F = Spruce/Fir	MC = Mixed Conifer	T = Tamarack	Y = Sand
G = Grass	MD = Mixed Deciduous	Z = Water	
H = Hemlock	N = Marsh		

Density

0 = Non Stocked	5 = Pole Timber Medium
1 = Seedling Sapling Poor	6 = Pole Timber Well
2 = Seedling Sapling Medium	7 = Saw Timber Poor
3 = Seedling Sapling Well	8 = Saw Timber Medium
4 = Pole Timber Poor	9 = Saw Timber Well

Locator Map (1:200,000)

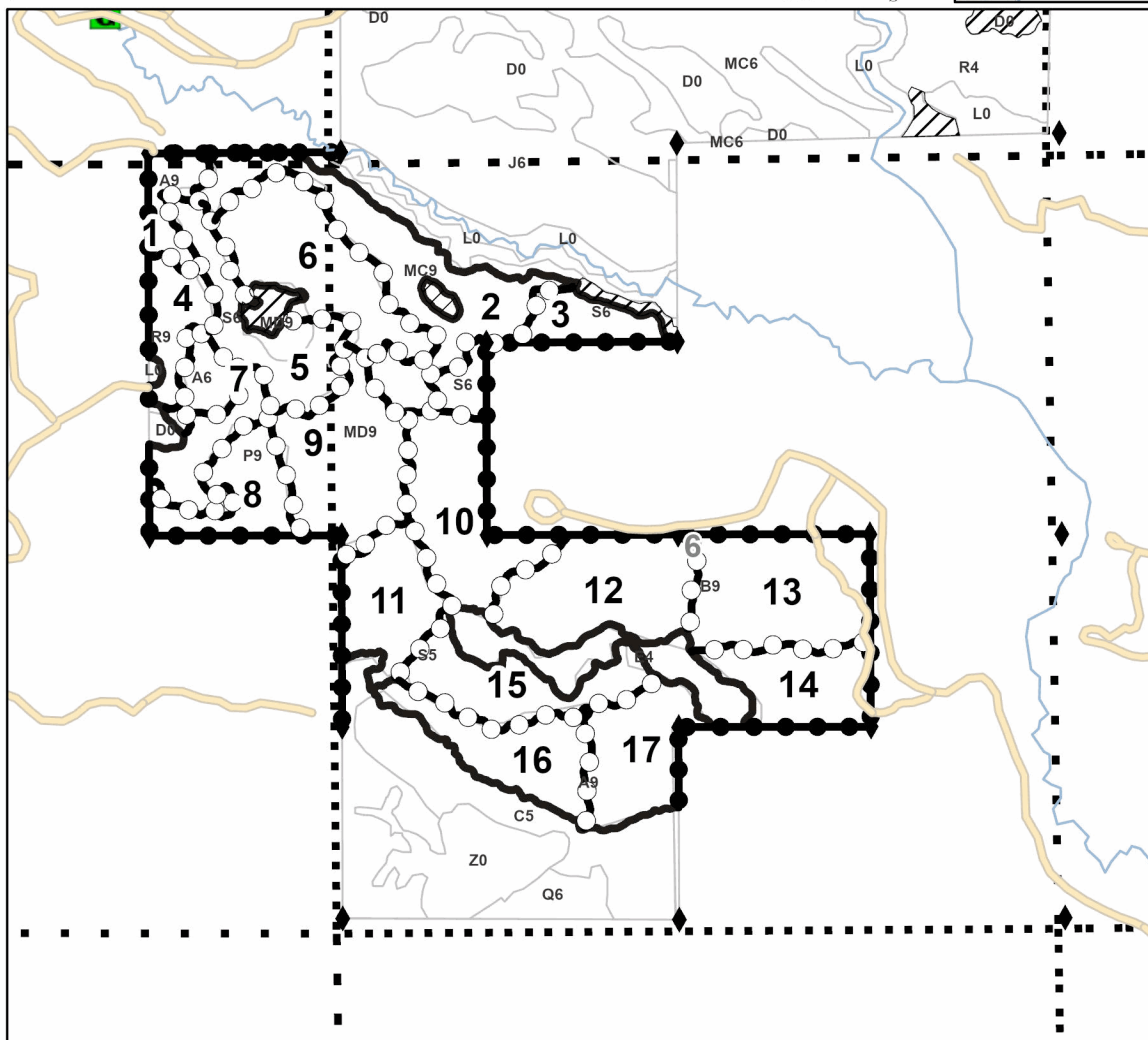


**Blue Line
Bonanza**

247.5 Acres

PU #	Acres	PU #	Acres	PU #	Acres	PU #	Acres
1	5	6	20.7	11	12.5	16	13.4
2	24.8	7	4.3	12	20.1	17	13.4
3	9.3	8	10.3	13	21.8		
4	7.3	9	27.1	14	12.1		
5	13.8	10	18	15	13.4		

0 0.25 0.5 1 Miles



Legend

- Payment Unit
- Stand
- Retention Areas
- Sections
- Against State (Red)
- Payment Unit (Yellow)
- Private Line (Blue)
- Non-DNR Road
- Perennial River
- Survey Grade Corner
- Gate

Use QR Code to open Map in App



Scotch with a Splash of Jack (42-012-24)
T49N, R12W, SEC. 2; Luce COUNTY

In response to the notice of sale to be held 3:00 p.m. (local time) on June 12, 2025, I am hereby submitting my sealed bid (firm offer) for the following forest products to be cut. Bids for individual species must be at or above the advertised price. All non-responsive bid forms may be rejected.

<u>PRODUCTS & SPECIES</u>	<u>ESTIMATED VOLUME*</u>	<u>ADVERTISED PRICE</u>	<u>BID PRICE/UNIT</u>
Pulpwood			
Balsam Fir	1 Cords	\$ 7.15/Cord	\$ _____
Black Spruce	1 Cords	\$ 4.60/Cord	\$ _____
Jack Pine	222 Cords	\$ 17.80/Cord	\$ _____
Red Pine	1 Cords	\$ 49.95/Cord	\$ _____
Scotch Pine	249 Cords	\$ 16.20/Cord	\$ _____

*The volumes are statistically estimated within plus (+) or minus (-) 29.47 percent at 95% confidence level. These estimated volumes are final and not subject to adjustment. Prospective bidders are urged to examine this timber and to make their own estimates of quantity and quality.

I understand that any or all bids may be rejected. All bids must be signed and all bid items must be bid or the bid form may be rejected. I also understand that consideration and awarding a contract will be based upon my past performance and ability to complete the contract based upon equipment and staffing subject to my control .

FEDERAL ID: ____ - ____ - ____ or SOCIAL SECURITY NUMBER: ____ - ____ - ____

Company or individual bidding: _____

Company representative's name: _____

Address: _____

City: _____ State: _____ Zip: _____

IF AVAILABLE, PLEASE PLACE THE PERSONALIZED LABEL FROM YOUR PROSPECTUS IN THE ABOVE BOX.

Individual or company representative's signature: _____ Date: _____

Phone number : _____ Email (optional): _____

**THE WINNING BIDDER MUST COMPLETE THE VERIFICATION OF WORKER'S DISABILITY COMPENSATION ACT
COMPLIANCE (ON REVERSE SIDE IF DOUBLE SIDED) WITHIN 21 DAYS OF SALE AWARD DATE**



TIMBER SALE VERIFICATION OF WORKER'S DISABILITY COMPENSATION ACT COMPLIANCE

As required by Act 317, P.A. 1969 (Worker's Compensation) and
Part 5 of Act 451 of 1994, as amended.

FOR DEPARTMENT USE ONLY

Sale Number (XX - XXX - XX - XX)

Forest Management Unit:

VERIFICATION OF WORKER'S DISABILITY COMPENSATION ACT COMPLIANCE

- This verification must be completed and submitted within 21 days of contract award and prior to the issuance of the timber sale contract.
- In addition, if boxes 2B or 2C are checked, then Notice of Exclusion or Certificate of Insurance must be submitted within twenty-one (21) days of the contract award and prior to the issuance of the timber sale contract.
- All information must be typed or printed except for written signatures.

Please Check Appropriate Categories:

1. My business is organized as (you **must** check one of the boxes below):
 - A. ☐ Sole Proprietorship (individual)
 - B. ☐ Partnership
 - C. ☐ Corporation
2. You **must** check one of the boxes below:
 - A. ☐ I certify my business is a sole proprietorship and it has no employees but the sole proprietor. I am not subject to the Worker's Compensation Laws.
 - B. ☐ I certify my business has satisfied its obligation to the Worker's Compensation Act through the use of an approved Notice of Exclusion (BWC-337, Rev. 5/96). I will provide a copy of the Notice of Exclusion within 21 days of the contract award. (For questions or a copy of the BWC-337, please call the Worker's Compensation Bureau at 517-322-1195).
 - C. ☐ I certify my business has a Worker's Compensation Policy. I will provide an original Certificate of Insurance within twenty-one (21) days of the contract award.
3. If you have checked item 2(A) or 2(B), you **must** indicate the number of **both** full-time and part-time employees, other than yourself, including family members and active partners (if none, you must enter "0").

_____ Full-time Employees

_____ Part-time Employees

Name of Business		Federal ID (or) Social Security No.
Address		Telephone ()
City	State	ZIP

I hereby certify that the above information is true and correct. I agree to notify the Michigan DNR of any changes that occur in factors affecting my coverage during any of my present and future operations.

Signature of Owner or Authorized Representative

Title

Date

Please complete the "SEALED BID" information on the next page

Chris Brown Lake Jack Pine (42-014-24)
T49N, R10W, SEC. 24; T49N, R10W, SEC. 25; Luce COUNTY

In response to the notice of sale to be held 3:00 p.m. (local time) on June 12, 2025, I am hereby submitting my sealed bid (firm offer) for the following forest products to be cut. Bids for individual species must be at or above the advertised price. All non-responsive bid forms may be rejected.

<u>PRODUCTS & SPECIES</u>	<u>ESTIMATED VOLUME*</u>	<u>ADVERTISED PRICE</u>	<u>BID PRICE/UNIT</u>
Pulpwood			
Balsam Fir	44 Cords	\$ 6.70/Cord	\$ _____
Black Spruce	21 Cords	\$ 4.30/Cord	\$ _____
Jack Pine	1,722 Cords	\$ 16.60/Cord	\$ _____
Mixed Hardwood	42 Cords	\$ 7.40/Cord	\$ _____
Quaking Aspen	225 Cords	\$ 15.65/Cord	\$ _____
Red Pine	204 Cords	\$ 46.65/Cord	\$ _____
White Pine	394 Cords	\$ 12.60/Cord	\$ _____

*The volumes are statistically estimated within plus (+) or minus (-) 15.39 percent at 95% confidence level. These estimated volumes are final and not subject to adjustment. Prospective bidders are urged to examine this timber and to make their own estimates of quantity and quality.

I understand that any or all bids may be rejected. All bids must be signed and all bid items must be bid or the bid form may be rejected. I also understand that consideration and awarding a contract will be based upon my past performance and ability to complete the contract based upon equipment and staffing subject to my control .

FEDERAL ID: ____-____-____ or SOCIAL SECURITY NUMBER: ____-____-____
Company or individual bidding: _____
Company representative's name: _____
Address: _____
City: _____ State: _____ Zip: _____

IF AVAILABLE, PLEASE PLACE THE PERSONALIZED LABEL FROM YOUR PROSPECTUS IN THE ABOVE BOX.

Individual or company representative's signature: _____ Date: _____

Phone number : _____ Email (optional): _____

**THE WINNING BIDDER MUST COMPLETE THE VERIFICATION OF WORKER'S DISABILITY COMPENSATION ACT
COMPLIANCE (ON REVERSE SIDE IF DOUBLE SIDED) WITHIN 21 DAYS OF SALE AWARD DATE**



TIMBER SALE VERIFICATION OF WORKER'S DISABILITY COMPENSATION ACT COMPLIANCE

As required by Act 317, P.A. 1969 (Worker's Compensation) and
Part 5 of Act 451 of 1994, as amended.

FOR DEPARTMENT USE ONLY

Sale Number (XX - XXX - XX - XX)

Forest Management Unit:

VERIFICATION OF WORKER'S DISABILITY COMPENSATION ACT COMPLIANCE

- This verification must be completed and submitted within 21 days of contract award and prior to the issuance of the timber sale contract.
- In addition, if boxes 2B or 2C are checked, then Notice of Exclusion or Certificate of Insurance must be submitted within twenty-one (21) days of the contract award and prior to the issuance of the timber sale contract.
- All information must be typed or printed except for written signatures.

Please Check Appropriate Categories:

1. My business is organized as (you **must** check one of the boxes below):
 - A. ☐ Sole Proprietorship (individual)
 - B. ☐ Partnership
 - C. ☐ Corporation
2. You **must** check one of the boxes below:
 - A. ☐ I certify my business is a sole proprietorship and it has no employees but the sole proprietor. I am not subject to the Worker's Compensation Laws.
 - B. ☐ I certify my business has satisfied its obligation to the Worker's Compensation Act through the use of an approved Notice of Exclusion (BWC-337, Rev. 5/96). I will provide a copy of the Notice of Exclusion within 21 days of the contract award. (For questions or a copy of the BWC-337, please call the Worker's Compensation Bureau at 517-322-1195).
 - C. ☐ I certify my business has a Worker's Compensation Policy. I will provide an original Certificate of Insurance within twenty-one (21) days of the contract award.
3. If you have checked item 2(A) or 2(B), you **must** indicate the number of **both** full-time and part-time employees, other than yourself, including family members and active partners (if none, you must enter "0").

_____ Full-time Employees

_____ Part-time Employees

Name of Business		Federal ID (or) Social Security No.
Address		Telephone ()
City	State	ZIP

I hereby certify that the above information is true and correct. I agree to notify the Michigan DNR of any changes that occur in factors affecting my coverage during any of my present and future operations.

Signature of Owner or Authorized Representative

Title

Date

Please complete the "SEALED BID" information on the next page

Blue Line Bonanza (42-016-24)
T48N, R06W, SEC. 6; T48N, R07W, SEC. 1; Chippewa COUNTY

In response to the notice of sale to be held 3:00 p.m. (local time) on June 12, 2025, I am hereby submitting my sealed bid (firm offer) for the following forest products to be cut. Bids for individual species must be at or above the advertised price. All non-responsive bid forms may be rejected.

<u>PRODUCTS & SPECIES</u>	<u>ESTIMATED VOLUME*</u>	<u>ADVERTISED PRICE</u>	<u>BID PRICE/UNIT</u>
Sawtimber			
Paper Birch	18.0 MBF	\$ 28.00/MBF	\$ _____
Red Maple	30.2 MBF	\$ 21.00/MBF	\$ _____
Pulpwood			
Balsam Fir	418 Cords	\$ 5.75/Cord	\$ _____
Black Spruce	1,266 Cords	\$ 3.70/Cord	\$ _____
Jack Pine	88 Cords	\$ 14.25/Cord	\$ _____
Mixed Aspen	1,001 Cords	\$ 13.40/Cord	\$ _____
Mixed Hardwood	2,061 Cords	\$ 6.35/Cord	\$ _____
Red Pine	81 Cords	\$ 40.00/Cord	\$ _____
Tamarack	6 Cords	\$ 3.65/Cord	\$ _____
White Pine	6 Cords	\$ 10.80/Cord	\$ _____
White Spruce	295 Cords	\$ 3.70/Cord	\$ _____

*The volumes are statistically estimated within plus (+) or minus (-) 11.33 percent at 95% confidence level. These estimated volumes are final and not subject to adjustment. Prospective bidders are urged to examine this timber and to make their own estimates of quantity and quality.

I understand that any or all bids may be rejected. All bids must be signed and all bid items must be bid or the bid form may be rejected. I also understand that consideration and awarding a contract will be based upon my past performance and ability to complete the contract based upon equipment and staffing subject to my control .

FEDERAL ID: ____ - ____ - ____ or SOCIAL SECURITY NUMBER: ____ - ____ - ____
 Company or individual bidding: _____
 Company representative's name: _____
 Address: _____
 City: _____ State: _____ Zip: _____

IF AVAILABLE, PLEASE PLACE THE PERSONALIZED LABEL FROM YOUR PROSPECTUS IN THE ABOVE BOX.

Individual or company representative's signature: _____ Date: _____

Phone number : _____ Email (optional): _____

**THE WINNING BIDDER MUST COMPLETE THE VERIFICATION OF WORKER'S DISABILITY COMPENSATION ACT
COMPLIANCE (ON REVERSE SIDE IF DOUBLE SIDED) WITHIN 21 DAYS OF SALE AWARD DATE**



TIMBER SALE VERIFICATION OF WORKER'S DISABILITY COMPENSATION ACT COMPLIANCE

As required by Act 317, P.A. 1969 (Worker's Compensation) and
Part 5 of Act 451 of 1994, as amended.

FOR DEPARTMENT USE ONLY

Sale Number (XX - XXX - XX - XX)

Forest Management Unit:

VERIFICATION OF WORKER'S DISABILITY COMPENSATION ACT COMPLIANCE

- This verification must be completed and submitted within 21 days of contract award and prior to the issuance of the timber sale contract.
- In addition, if boxes 2B or 2C are checked, then Notice of Exclusion or Certificate of Insurance must be submitted within twenty-one (21) days of the contract award and prior to the issuance of the timber sale contract.
- All Information must be typed or printed except for written signatures.

Please Check Appropriate Categories:

1. My business is organized as (you **must** check one of the boxes below):
 - A. ☐ Sole Proprietorship (individual)
 - B. ☐ Partnership
 - C. ☐ Corporation
2. You **must** check one of the boxes below:
 - A. ☐ I certify my business is a sole proprietorship and it has no employees but the sole proprietor. I am not subject to the Worker's Compensation Laws.
 - B. ☐ I certify my business has satisfied its obligation to the Worker's Compensation Act through the use of an approved Notice of Exclusion (BWC-337, Rev. 5/96). I will provide a copy of the Notice of Exclusion within 21 days of the contract award. (For questions or a copy of the BWC-337, please call the Worker's Compensation Bureau at 517-322-1195).
 - C. ☐ I certify my business has a Worker's Compensation Policy. I will provide an original Certificate of Insurance within twenty-one (21) days of the contract award.
3. If you have checked item 2(A) or 2(B), you **must** indicate the number of **both** full-time and part-time employees, other than yourself, including family members and active partners (if none, you must enter "0").

_____ Full-time Employees

_____ Part-time Employees

Name of Business		Federal ID (or) Social Security No.
Address		Telephone ()
City	State	ZIP

I hereby certify that the above information is true and correct. I agree to notify the Michigan DNR of any changes that occur in factors affecting my coverage during any of my present and future operations.

Signature of Owner or Authorized Representative

Title

Date

Please complete the "SEALED BID" information on the next page