



**DEPARTMENT OF NATURAL RESOURCES  
STATE OF MICHIGAN  
TIMBER SALE PROSPECTUS #7605**

**SCHEDULED SALE DATE AND TIME:** 3:00 p.m. (local time) on July 10, 2025.

**LOCATION:** NEWBERRY MGMT UNIT, 5666 S STATE HWY M 123, NEWBERRY, MI 49868.

**PROSPECTUS NOTE:** The bidder is advised to inspect the sale area and review the location, estimated volumes, operating costs and contract terms of proposed sales. Please be aware that some landowners may request 60 days or more notice for access across their land.

Notice is hereby given that bids will be received by the Unit Manager, NEWBERRY MANAGEMENT UNIT, for certain timber on the following described lands:

**Bear Surprise Pine** (42-017-24) / T50N, R08W, SEC. 15, SWSW.

T50N, R08W, SEC. 16, W1/2SW.

T50N, R08W, SEC. 17, E1/2SE.

T50N, R08W, SEC. 20, E1/2NE, N1/2SW, SWSW, N1/2SE.

T50N, R08W, SEC. 21, NW, NE.

T50N, R08W, SEC. 22, NW, SESW.

T50N, R08W, SEC. 27, N1/2NW.

Luce County, Advertised Price \$140,934.55, 348.1 Acres, Red Pine, White Pine.

SALE NOTE: Within Payment Unit(s) 1-13, hauling is limited to the period of October 1 to March 1 because of the sandy nature of County Road 412. See Sale Spec 5.2.3.1 for details.

A recreation site such as a trail, pathway, or campground is within the sale area or the vicinity. Certain restrictions/specifications may be applicable including time restrictions.

**Dark Side of the Dune** (42-020-24) / T50N, R08W, SEC. 17, S1/2SE.

T50N, R08W, SEC. 20, NW, W1/2NE.

Luce County, Advertised Price \$92,856.30, 107.7 Acres, Jack Pine, Red Pine.

SALE NOTE: The County must be contacted prior to crossing or harvesting in the County Road R-O-W. This applies to Payment Units 2-3 and County Road 412.

The "Trail 8" or County Road 412 is a snowmobile trail and is shown on the Timber Sale Map. See Sale Spec 5.2.41 for restrictions.

It is recommended, but not required, that within Payment Unit(s) 1-3, hauling occur during the fall or early winter months because of tourist traffic on County Road 412.

A recreation site such as a trail, pathway, or campground is within the sale area or the vicinity. Certain restrictions/specifications may be applicable including time restrictions.

## BID INSTRUCTIONS (VER. 10/10/2022):

### 1. Scheduled Bid Location, Date, and Time (2/11)

Bids must be received by the Unit Manager, NEWBERRY OFFICE, 5666 S STATE HWY M 123, NEWBERRY, MI 49868, no later than 3:00 p.m. (local time) on July 10, 2025. For further information concerning this sale, contact Keith Magnusson at 906-291-0120 extension n/a.

### 2. Bidder's Qualifications (10/22)

If all or part of a timber sale was prepared by a private contractor, the contractor and that contractor's company are not permitted to bid on the timber sale. A person must be 18 years of age or older to purchase timber. Permanent employees of the Department of Natural Resources or members of their immediate household may not bid. Former employees, in the permanent or seasonal class, may not bid until 3 months after the last day of active duty. Bids will not be accepted from individuals or companies appearing on the DNR/FRD No-Bid List. This list contains the names of purchasers who previously failed to execute a contract within 21-days or who have a history of poor performance.

### 3. Preparation of Sealed Bids (5/16)

Bid Forms may be completed online thru Michigan DNR Timber Sale Online Bidding (OLB) at [www.michigan.gov/timberbidding](http://www.michigan.gov/timberbidding) or by completing the hardcopy Bid Form found in the Timber Sale Prospectus. Hardcopy Bid Forms shall be manually signed in ink. Registration in OLB is considered your 'signature' for all bids submitted thru that system. Bid prices must be entered for each species and product in the Bid Price column for all material subject to bidding and all fill-in blanks must be completed. If erasures or other changes appear on the hardcopy Bid Form, each erasure or change must be initialed by the person signing the bid.

### 4. Submission of Sealed Bids (5/16)

Bid forms may be obtained from the Unit Manager or thru OLB. Bids may be submitted hardcopy or thru OLB. All hardcopy bids must be submitted on the bid form and in an envelope clearly identified as described in this section. NOTE: Only one bid form per bid envelope. Sealed bids must be submitted to the Unit office designated in the prospectus and must be submitted at or prior to the time established in the prospectus. The envelope should show on the outside (a) the sale name or number and (b) the date and time of bid opening, as shown in the prospectus. Bids received after the time specified in the sale prospectus are late bids and will be rejected.

It is possible for a bidder to submit multiple bids on a single sale. For example, a bid may be submitted hardcopy and a bid may be submitted thru OLB. Or, two bidders from the same company could both submit bids on the same sale. If this were to happen, the State would accept all bids received and award the contract accordingly. All bidding and contractual requirements would apply to all bids received.

### 5. Public Opening of Sealed Bids (7/16)

If conditions permit, the sealed bids will be publicly opened and posted at the time and place set in the prospectus.

If a bidder, present at a bid opening, has submitted bids on more than one sale, that bidder may withdraw their unopened bid envelopes or announce the withdrawal of their online bid after being declared the successful bidder on one sale.

### 6. Award of Contract (1/11)

Award of the contract will be made to the Bidder whose bid, conforming to the prospectus, is most advantageous to the State of Michigan on the basis of total value at rates bid for the estimated quantities. The State reserves the right to reject any bid or waive any minor irregularity in bids received. A written award mailed (or otherwise furnished) to the successful Bidder shall be deemed to result in a binding contract without further action by either party.

### 7. Down Payment (1/11)

The Bidder to whom award is made must make a down payment within 21 days of the sale award. The amount of the down payment will be calculated as shown in the Bond and Payment Schedule of this prospectus. Only cash may be used to meet this requirement.

### 8. Performance Security (1/11)

As guarantee of faithful performance, a cash bond, certificate of deposit, surety bond or irrevocable letter of credit (LOC) is required within 21 days of the sale award. The amount of the performance security is shown in the Bond and

Payment Schedule of this prospectus. If an LOC or surety is used, the coverage must extend for at least 6 months beyond the contract expiration.

#### 9. Worker's Compensation (10/22)

Purchaser shall obtain worker's compensation insurance to cover claims under Michigan's Worker's Disability Compensation Act of 1969 or similar employee benefit act of any other state applicable to an employee. Verification of Worker's Disability Compensation Act Compliance must be completed and submitted within 21 days of contract award and prior to the issuance of the timber sale contract. In addition, if applicable, Notice of Exclusion or Certificate of Insurance must also be submitted.

#### 10. Timber Sale Contract (10/22)

Additional conditions and requirements common to all timber sales are listed on the timber sale contract (R4031) and are available on line at [www.michigan.gov/timber](http://www.michigan.gov/timber). Contact the Unit Manager for additional information or a sample contract. Within 21 days of the date of the award letter, the bidder must sign the contract and provide the required down payment, performance security, and verification of worker's disability compensation. The down payment and performance security shall be in accordance with the provisions of the timber sale contract, in the sums stated in this prospectus. If these actions are not taken, then the Bidder, the Bidder's corporation, and the corporation's principals may not be permitted to bid on State timber sales for a period of 3 months after the first offense, 6 months after the second offense, and 1 year after the third offense. An offense will only be counted against the Bidder for 5 years. In addition, the Bidder certifies that if awarded this contract, the Bidder will complete the timber sale contract in accordance with its terms and any modifications thereof including requirements to purchase, cut, and remove the included timber by the expiration date.

Payment Unit values in the State Forest Timber Sale Contract are calculated based on the advertised value of the Payment Unit as a percentage of the total advertised value of the contract. The advertised value of each Payment Unit is given in the Description of Timber by Payment Unit table on the Timber Sale Information page. For example, if the value of Payment Unit 1 is advertised as \$1,500 and the total Timber Sale value is advertised as \$10,000, the contract price for Payment Unit 1 will be 15% of the total bid price ( $\$1,500/\$10,000 * 100$ ).

#### 11. Disclaimer of Estimates and Bidder's Warranty of Inspection (10/22)

Before submitting this bid, the Bidder is advised and cautioned to inspect the sale area, review the requirements of the sale contract, and take other steps as may be reasonably necessary to ascertain the location, estimated volumes, construction estimates, and operating costs of the proposed sale. Failure to do so will not relieve the Bidder from responsibility for completing the contract.

The Bidder warrants that this bid is submitted solely on the basis of the Bidder's examination and inspection of the quality and quantity of the timber offered for sale and the Bidder's opinion of the value thereof and the costs of recovery. No reliance should be placed on the State of Michigan's estimates of timber quality, quantity or costs of recovery. Bidder further acknowledges that the State of Michigan: (i) expressly disclaims any warranty of fitness of timber for any purpose; (ii) offers this timber as is without any warranty of quality (merchantability) or quantity and (iii) expressly disclaims any warranty as to the quantity or quality of timber sold.

#### 12. Certification and Chain-of-Custody (10/22)

Unless otherwise indicated in the contract under section 7 – Other Conditions of the Sale Specific Conditions & Requirements, the area encompassed by this timber sale is certified to the standards of the Forest Stewardship Council (FSC) - Certificate #SCS-FM/COC-00090N and the Sustainable Forestry Initiative (SFI) - Certificate #NSF-SFIS-5Y031-SF5. Forest products from this sale may be delivered to the mill as "FSC 100% and / or SFI certified" as long as the contractor hauling the forest products is chain-of-custody (COC) certified or covered under a COC certificate from the destination mill. The purchaser is responsible for maintaining COC after leaving the sale area.

#### 13. Good Neighbor Authority (GNA) Requirements (10/22)

If the name of this timber sales contains the acronym GNA, it is authorized by the Good Neighbor Authority (GNA) and covered by various agreements between the U.S. Forest Service and the State. The timber sale occurs on federal land and the following conditions apply:

GNA contracts on US Forest Service land will not be awarded to purchasers on the Federal list of excluded parties. The System for Award Management (SAM) will be checked for active excluded parties prior to award of contract. In

addition, the Bidder to whom award is made must complete an Assurance Regarding Felony Conviction or Tax Delinquent Status for Corporate Applicants (AD-3031).

14. Good Neighbor Authority (GNA) Requirements, con't (10/22)

Bidder certifies, by signing this bid form, that to the best of Bidder's knowledge that the following representations are accurate and complete.

- a. That the Bidder and its principals are not presently debarred, suspended, proposed for debarment, declared ineligible, or voluntary excluded from timber sales (covered transactions) by any Federal department or agency.
- b. That the Bidder and its principals have not within a 3-year period preceding this bid been convicted of or had a civil judgment rendered against them for commission of fraud or a criminal offense in connection with obtaining , attempting to obtain, or performing a public (Federal, State, or local) transaction or contract under a public transaction; violation of Federal or State antitrust statutes or commission of embezzlement, theft, forgery, bribery, falsification or destruction of records, making false statements, or receiving stolen property.
- c. That the Bidder and its principals are not presently indicted for or otherwise criminally or civilly charged by a governmental entity (Federal, State, or local) with commission of any of the offenses enumerated in paragraph b of this certification.
- d. That the Bidder and its principals have not within a 3-year period preceding this bid had one or more public transactions (Federal, State, or local) terminated for breach or default of a timber or forest product contract.

Bidders that cannot certify this requirement, in whole or in part, shall submit an explanation with their bid.

Scott Bowen  
Director

## TIMBER SALE INFORMATION

### Bear Surprise Pine (42-017-24)

T50N, R08W, SEC. 15; T50N, R08W, SEC. 16; T50N, R08W, SEC. 17; T50N, R08W, SEC. 20; T50N, R08W, SEC. 21; T50N, R08W, SEC. 22; T50N, R08W, SEC. 27.

SALE NOTE: Within Payment Unit(s) 1-13, hauling is limited to the period of October 1 to March 1 because of the sandy nature of County Road 412. See Sale Spec 5.2.3.1 for details.

A recreation site such as a trail, pathway, or campground is within the sale area or the vicinity. Certain restrictions/specifications may be applicable including time restrictions.

A timber sale contract for this lump sum, sealed bid timber sale will be awarded to the responsible bidder offering the highest sealed bid price. All units of volume listed below were estimated using the Inventory Manager computer program and the new Michigan taper model. Bids must be at or above the following advertised price for each product and species:

<u>PRODUCTS &amp; SPECIES</u>	<u>ESTIMATED UNITS*</u>	<u>ADVERTISED PRICE</u>
Pulpwood		
Balsam Fir	10 Cords	\$ 6.95 / Cord
Black Spruce	181 Cords	\$ 4.85 / Cord
Jack Pine	1,329 Cords	\$ 16.25 / Cord
Paper Birch	27 Cords	\$ 2.30 / Cord
Red Maple	53 Cords	\$ 9.05 / Cord
Red Pine	1,813 Cords	\$ 50.80 / Cord
White Pine	1,672 Cords	\$ 15.40 / Cord

\* The total volume is statistically estimated within plus (+) or minus (-) 8.77 percent. There are an estimated 5,473 cords on this timber sale, plus or minus 480 cords at the 95% confidence level. The estimated units are final and not subject to adjustment. Prospective bidders are urged to examine this timber and to make their own estimates of quantity and quality.

### **BOND AND PAYMENT SCHEDULE:**

1. A bond in the amount of \$7,047.00 to insure faithful performance of the conditions of the contract will be deposited by the successful bidder within 21 days of the sale award.
2. Cutting in any sale or unit without the required advance payment would be considered a trespass.
3. Total payment must be paid in advance or according to the following schedule:
  - (a) Ten percent (10%) of the sale value must be paid within 21 days of the sale award.
  - (b) The 10% down payment will be credited towards the first unit cut.

(c) Payment for each of the following units must be made before cutting begins in that unit:

<u>PAYMENT UNIT NUMBER</u>	<u>PERCENT OF TOTAL SALE VALUE</u>
01	11.3%
02	5.7%
03	4.4%
04	4.9%
05	3.2%
06	2.2%
07	12.2%
08	4.2%
09	15.4%
10	10.8%
11	10.6%
12	9.2%
13	5.9%

4. If no cutting takes place, the 10% down payment will not be refunded.
5. Operations on the contract issued will terminate on 12/31/2029.

### **SALE STATISTICS**

Volumes were calculated in cubic feet using the Michigan taper model. Cubic foot volume includes all wood inside bark for the product indicated. For display purposes, cubic feet were converted to cords and MBF using a simple conversion factor, e.g. 79 cubic feet per cord and 185 cubic feet per MBF. The cubic foot volumes are precise; the cords and MBF volumes are not. Cubic foot volume cannot be directly converted to cords or boards with precision.

## SALE VOLUMES

The total estimated sale volume may not equal the sum of the species/products due to the nature of statistical calculations associated with double sampling methodology.

VOLUME			STATISTICAL RANGE IN CORDS	
TOTAL CUBIC FEET	TOTAL CORDS	PERCENT ERROR	MINIMUM	MAXIMUM
432,353	5,473	8.77%	4,993	5,953

## VDU VOLUMES

A VDU is a Volume Determination Unit. Volumes and their associated statistics are calculated at the VDU level and summarized to the sale level. There is often a one to one relationship between a VDU and a Payment Unit, but not always, depending on the cruise design. Refer to the VDU TO PAYMENT UNIT table.

	VOLUME			RANGE IN CORDS	
VDU	TOTAL CUBIC FEET	TOTAL CORDS	PERCENT ERROR	MINIMUM	MAXIMUM
7	50,518	639	20.76%	507	772
17	37,621	476	25.74%	354	599
22	24,066	305	26.68%	223	386
24	134,041	1,697	17.71%	1,396	1,997
60	40,241	509	29.08%	361	658
64	31,415	398	25.95%	294	501
203	114,451	1,449	18.83%	1,176	1,721
<b>TOTAL:</b>	<b>432,353</b>	<b>5,473</b>		<b>4,312</b>	<b>6,634</b>

## VDU TO PAYMENT UNIT

When a VDU is associated with more than one Payment Unit (PU), the VDU volumes are assigned to the PU based on acres of the VDU within the PU.

VDU	VDU ACRES	PU	PU ACRES
7	66.8	1	44.4
		2	22.4
17	35.1	3	16.8
		4	18.3
22	28.8	5	17.3
		6	11.5
24	96.8	7	37.5
		8	13.0
		9	46.3
60	11.7	12	11.7
64	32.7	13	32.7
203	76.2	10	38.5
		11	37.7
<b>TOTAL:</b>	<b>348.1</b>		<b>348.1</b>

**DESCRIPTION OF TIMBER BY PAYMENT UNIT (PU)**

PU	MARKET GROUP	PRODUCT	QUANTITY	UNIT	ACRES	ADVERTISE PRICE
1	Jack Pine	Pulpwood	2	Cords	44.4	\$15,989.60
	<i>Jack Pine</i>		2	<i>Cords</i>		
	Paper Birch		3	Cords		
	Red Pine		287	Cords		
	<i>Red Pine</i>	<i>Sawtimber</i>	98.6	<i>MBF</i>		
	<i>Red Pine</i>	<i>Pulpwood</i>	90	<i>Cords</i>		
	White Pine		89	Cords		
	<i>White Pine</i>	<i>Sawtimber</i>	28.9	<i>MBF</i>		
	<i>White Pine</i>	<i>Pulpwood</i>	31	<i>Cords</i>		
2	Jack Pine	Pulpwood	1	Cords	22.4	\$8,077.55
	<i>Jack Pine</i>		1	<i>Cords</i>		
	Paper Birch		1	Cords		
	Red Pine		145	Cords		
	<i>Red Pine</i>	<i>Sawtimber</i>	49.7	<i>MBF</i>		
	<i>Red Pine</i>	<i>Pulpwood</i>	46	<i>Cords</i>		
	White Pine		45	Cords		
	<i>White Pine</i>	<i>Sawtimber</i>	14.6	<i>MBF</i>		
	<i>White Pine</i>	<i>Pulpwood</i>	16	<i>Cords</i>		
3	Black Spruce	Pulpwood	5	Cords	16.8	\$6,268.45
	<i>Black Spruce</i>	<i>Sawtimber</i>	0.4	<i>MBF</i>		
	<i>Black Spruce</i>	<i>Pulpwood</i>	4	<i>Cords</i>		
	Jack Pine		75	Cords		
	<i>Jack Pine</i>	<i>Sawtimber</i>	12.3	<i>MBF</i>		
	<i>Jack Pine</i>	<i>Pulpwood</i>	50	<i>Cords</i>		
	Red Maple		5	Cords		
	Red Pine		85	Cords		
	<i>Red Pine</i>	<i>Sawtimber</i>	19.0	<i>MBF</i>		
	<i>Red Pine</i>	<i>Pulpwood</i>	47	<i>Cords</i>		
	White Pine		43	Cords		
	<i>White Pine</i>	<i>Sawtimber</i>	11.1	<i>MBF</i>		
	<i>White Pine</i>	<i>Pulpwood</i>	21	<i>Cords</i>		
4	Black Spruce	Pulpwood	6	Cords	18.3	\$6,839.65
	<i>Black Spruce</i>	<i>Sawtimber</i>	0.5	<i>MBF</i>		
	<i>Black Spruce</i>	<i>Pulpwood</i>	5	<i>Cords</i>		
	Jack Pine		82	Cords		
	<i>Jack Pine</i>	<i>Sawtimber</i>	13.5	<i>MBF</i>		
	<i>Jack Pine</i>	<i>Pulpwood</i>	55	<i>Cords</i>		
	Red Maple		5	Cords		
	Red Pine		93	Cords		
	<i>Red Pine</i>	<i>Sawtimber</i>	20.7	<i>MBF</i>		
	<i>Red Pine</i>	<i>Pulpwood</i>	52	<i>Cords</i>		
	White Pine		46	Cords		
	<i>White Pine</i>	<i>Sawtimber</i>	12.1	<i>MBF</i>		
	<i>White Pine</i>	<i>Pulpwood</i>	22	<i>Cords</i>		
5	Jack Pine	Pulpwood	3	Cords	17.3	\$4,540.15
	<i>Jack Pine</i>	<i>Sawtimber</i>	0.5	<i>MBF</i>		
	<i>Jack Pine</i>	<i>Pulpwood</i>	2	<i>Cords</i>		
	Paper Birch		1	Cords		
	Red Maple		2	Cords		
	Red Pine		58	Cords		
	<i>Red Pine</i>	<i>Sawtimber</i>	24.6	<i>MBF</i>		
	<i>Red Pine</i>	<i>Pulpwood</i>	9	<i>Cords</i>		
	White Pine		99	Cords		
	<i>White Pine</i>	<i>Sawtimber</i>	32.6	<i>MBF</i>		
	<i>White Pine</i>	<i>Pulpwood</i>	34	<i>Cords</i>		
6	Jack Pine	Pulpwood	3	Cords	11.5	\$3,042.30

## DESCRIPTION OF TIMBER BY PAYMENT UNIT (PU), CON'T

PU	MARKET GROUP	PRODUCT	QUANTITY	UNIT	ACRES	ADVERTISE PRICE
6 con't	<i>Jack Pine</i>	<i>Sawtimber</i>	0.3	<i>MBF</i>		
	<i>Jack Pine</i>	<i>Pulpwood</i>	2	<i>Cords</i>		
	Paper Birch		1	Cords		
	Red Maple		1	Cords		
	Red Pine		39	Cords		
	<i>Red Pine</i>	<i>Sawtimber</i>	16.4	<i>MBF</i>		
	<i>Red Pine</i>	<i>Pulpwood</i>	6	<i>Cords</i>		
	White Pine		65	Cords		
	<i>White Pine</i>	<i>Sawtimber</i>	21.6	<i>MBF</i>		
	<i>White Pine</i>	<i>Pulpwood</i>	22	<i>Cords</i>		
7	Balsam Fir	Pulpwood	4	Cords	37.5	\$17,244.55
	Black Spruce		50	Cords		
	<i>Black Spruce</i>	<i>Sawtimber</i>	0.9	<i>MBF</i>		
	<i>Black Spruce</i>	<i>Pulpwood</i>	48	<i>Cords</i>		
	Jack Pine		72	Cords		
	<i>Jack Pine</i>	<i>Sawtimber</i>	7.7	<i>MBF</i>		
	<i>Jack Pine</i>	<i>Pulpwood</i>	57	<i>Cords</i>		
	Paper Birch		7	Cords		
	Red Maple		7	Cords		
	Red Pine		238	Cords		
	<i>Red Pine</i>	<i>Sawtimber</i>	63.7	<i>MBF</i>		
	<i>Red Pine</i>	<i>Pulpwood</i>	111	<i>Cords</i>		
	White Pine		236	Cords		
	<i>White Pine</i>	<i>Sawtimber</i>	54.7	<i>MBF</i>		
	<i>White Pine</i>	<i>Pulpwood</i>	127	<i>Cords</i>		
8	Balsam Fir	Pulpwood	1	Cords	13.0	\$5,960.65
	Black Spruce		18	Cords		
	<i>Black Spruce</i>	<i>Sawtimber</i>	0.3	<i>MBF</i>		
	<i>Black Spruce</i>	<i>Pulpwood</i>	17	<i>Cords</i>		
	Jack Pine		25	Cords		
	<i>Jack Pine</i>	<i>Sawtimber</i>	2.7	<i>MBF</i>		
	<i>Jack Pine</i>	<i>Pulpwood</i>	20	<i>Cords</i>		
	Paper Birch		2	Cords		
	Red Maple		3	Cords		
	Red Pine		82	Cords		
	<i>Red Pine</i>	<i>Sawtimber</i>	22.1	<i>MBF</i>		
	<i>Red Pine</i>	<i>Pulpwood</i>	38	<i>Cords</i>		
	White Pine		82	Cords		
	<i>White Pine</i>	<i>Sawtimber</i>	19.0	<i>MBF</i>		
	<i>White Pine</i>	<i>Pulpwood</i>	44	<i>Cords</i>		
9	Balsam Fir	Pulpwood	5	Cords	46.3	\$21,303.85
	Black Spruce		60	Cords		
	<i>Black Spruce</i>	<i>Sawtimber</i>	1.1	<i>MBF</i>		
	<i>Black Spruce</i>	<i>Pulpwood</i>	58	<i>Cords</i>		
	Jack Pine		89	Cords		
	<i>Jack Pine</i>	<i>Sawtimber</i>	9.6	<i>MBF</i>		
	<i>Jack Pine</i>	<i>Pulpwood</i>	70	<i>Cords</i>		
	Paper Birch		8	Cords		
	Red Maple		9	Cords		
	Red Pine		294	Cords		
	<i>Red Pine</i>	<i>Sawtimber</i>	78.7	<i>MBF</i>		
	<i>Red Pine</i>	<i>Pulpwood</i>	137	<i>Cords</i>		
	White Pine		292	Cords		
	<i>White Pine</i>	<i>Sawtimber</i>	67.6	<i>MBF</i>		
	<i>White Pine</i>	<i>Pulpwood</i>	157	<i>Cords</i>		
10	Jack Pine	Pulpwood	400	Cords	38.5	\$15,291.00



**DESCRIPTION OF TIMBER BY PAYMENT UNIT (PU), CON'T**

PU	MARKET GROUP	PRODUCT	QUANTITY	UNIT	ACRES	ADVERTISE PRICE
10 con't	<i>Jack Pine</i>	<i>Pulpwood</i>	400	<i>Cords</i>		
	Red Pine		120	Cords		
	<i>Red Pine</i>	<i>Sawtimber</i>	47.6	<i>MBF</i>		
	<i>Red Pine</i>	<i>Pulpwood</i>	25	<i>Cords</i>		
	White Pine		175	Cords		
	<i>White Pine</i>	<i>Sawtimber</i>	60.8	<i>MBF</i>		
	<i>White Pine</i>	<i>Pulpwood</i>	53	<i>Cords</i>		
11	Jack Pine	Pulpwood	392	Cords	37.7	\$14,931.60
	<i>Jack Pine</i>		392	<i>Cords</i>		
	Red Pine		117	Cords		
	<i>Red Pine</i>	<i>Sawtimber</i>	46.7	<i>MBF</i>		
	<i>Red Pine</i>	<i>Pulpwood</i>	24	<i>Cords</i>		
	White Pine		170	Cords		
	<i>White Pine</i>	<i>Sawtimber</i>	59.6	<i>MBF</i>		
<i>White Pine</i>	<i>Pulpwood</i>	51	<i>Cords</i>			
12	Black Spruce	Pulpwood	10	Cords	11.7	\$12,934.35
	<i>Black Spruce</i>		10	<i>Cords</i>		
	Jack Pine		127	Cords		
	<i>Jack Pine</i>	<i>Sawtimber</i>	15.6	<i>MBF</i>		
	<i>Jack Pine</i>	<i>Pulpwood</i>	96	<i>Cords</i>		
	Paper Birch		3	Cords		
	Red Pine		165	Cords		
	<i>Red Pine</i>	<i>Sawtimber</i>	69.1	<i>MBF</i>		
	<i>Red Pine</i>	<i>Pulpwood</i>	27	<i>Cords</i>		
	White Pine		158	Cords		
	<i>White Pine</i>	<i>Sawtimber</i>	49.5	<i>MBF</i>		
	<i>White Pine</i>	<i>Pulpwood</i>	59	<i>Cords</i>		
	13	Black Spruce	Pulpwood	33		
<i>Black Spruce</i>		<i>Sawtimber</i>	1.5	<i>MBF</i>		
<i>Black Spruce</i>		<i>Pulpwood</i>	30	<i>Cords</i>		
Jack Pine			57	Cords		
<i>Jack Pine</i>		<i>Sawtimber</i>	5.0	<i>MBF</i>		
<i>Jack Pine</i>		<i>Pulpwood</i>	47	<i>Cords</i>		
Paper Birch			1	Cords		
Red Maple			21	Cords		
Red Pine			87	Cords		
<i>Red Pine</i>		<i>Sawtimber</i>	26.9	<i>MBF</i>		
<i>Red Pine</i>		<i>Pulpwood</i>	33	<i>Cords</i>		
White Pine			171	Cords		
<i>White Pine</i>		<i>Sawtimber</i>	46.7	<i>MBF</i>		
<i>White Pine</i>		<i>Pulpwood</i>	78	<i>Cords</i>		
TOTAL:			5,081	Cords		

## **Sale Specific Conditions & Requirements**

**Sale Name: Bear Surprise Pine**

**Sale Number: 42-017-24 Seq#: 1**

### **1 - Sale Area**

#### **1.2 - Boundaries**

##### **1.2.1 - Painted Boundaries (9/19)**

The sale boundary and Payment Unit boundaries are marked and identified by blue, red and yellow paint. Exterior sale boundary lines against private property are marked with blue paint. Exterior sale boundary lines against state are marked with red paint. Interior Payment Unit boundaries are marked with yellow paint. The painted boundary line trees are not Included Timber and are to be protected unless marked with orange paint. Yellow painted trees designating an interior Payment Unit boundary are only to be cut when all surrounding Payment Units have been paid.

### **2 - Timber Specifications**

#### **2.1 - Included Timber**

##### **2.1.1 - Clearcut Unit(s) with Unmerchantable Trees (6/14)**

Within Payment Unit(s) 10, 11, and 12, cut all trees that are two (2) inches or more at DBH, except do not cut any oak that may be present in these units.

##### **2.1.3 - Cut Tree Marked Unit(s) (12/08)**

Within Payment Unit(s) 1-4, 7-9, and 13, all trees are designated for cutting when marked with orange paint above and below stump height, regardless of merchantability.

In addition, within Payment Units 3 and 4, remove all jack pine and aspen, except do not cut any aspen trees ringed in green paint, or any birch or oak that are present.

Furthermore, within Payment Units 1 and 2, oak may be harvested for maneuverability if needed (avoid harvesting large diameter oak) but must be decked separately to be scaled by the Sale Administrator. Payment will be made at contract prices or average prices, if not on the contract.

Also, within Payment Units 7, 8, and 9, do not cut any oak.

Finally, within Payment Unit 13, all jack pine, spruce, and balsam fir are designated for cutting, regardless of merchantability, except do not cut oak.

##### **2.1.5 - Overstory Removal Unit(s) (8/11)**

Within Payment Unit(s) 5 and 6, all trees which meet minimum piece specifications in 2.2 Utilization, are designated for cutting, except do not cut any oak or trees ringed in green paint.

### **3 - Payments**

#### **3.3 - Pre-measured Sales**

##### **3.3.4 - Dividing Payment Units (7/14)**

Payment Unit(s) 1, 7, and 9-12 may be divided at the request of the Purchaser and upon approval of the Unit Manager.

Dividing Payment Units is a contract modification which requires a Timber Sale Contract Amendment. There will be only one division per Payment Unit.

### **4 - Transportation**

#### **4.1 - Construction**

##### **4.1.4 - Timber Removed for Construction (3/23)**

Trees cut or damaged in the process of pre-approved road, landing, or skid trail construction will be decked in an area separate from other Designated Timber and not removed until measured by the Sale Administrator. Payment will be made at contract prices or average prices, if not on the contract.

#### 4.1.6 - Road Construction (4/24)

Construction of new roads or improvements of existing roads shall be done in such a way as to minimize the environmental and visual impacts. Merchantable trees shall be cut and utilized unless otherwise directed. Non-merchantable trees shall be severed and laid flat on the ground. Slash shall be scattered, and not left in windrows and kept a minimum of 10 feet back from the road edge. Stumps shall be set upright, not left on edge, and be moved at least 10 feet away from the road edge. Disturbed soil shall be feathered into the woods and not left in berms or windrows.

#### 4.1.7 - Road Closure (10/11)

All new roads built into the sale must be blocked to vehicle traffic upon completion of the sale. Overgrown roads that are reopened shall be considered new roads. In general, this will require constructing a four (4') foot high berm of stumps and logs covered with earth. These roads must be rendered impassable to cars and trucks. All stumps from road building and landing construction must be reserved to block any newly constructed roads upon completion of the sale. These stumps must be scattered along the road system to prohibit vehicular movement. Contact the Sale Administrator for specific details of design and placement.

### 4.2 - Maintenance

#### 4.2.1 - Hauling Restriction (12/08)

Hauling may be restricted on forest roads by the Unit Manager or his/her representative. The restriction may occur during wet or extremely dry weather conditions.

#### 4.2.2 - Fill Material (4/07)

To maintain roads, fill material may be needed in areas where "holes" exist or may be expected to develop. This fill material should be placed before trucking begins.

#### 4.2.3 - Road maintenance (8/13)

The following road maintenance may be needed, the road must be maintained and graded. This includes cleaning of drainage areas, grading, crowning and filling with gravel, if necessary. Damages will be assessed if grading/repair does not occur. Provide a description of the road maintenance here.

#### 4.2.4 - Grading (10/16)

For completion of the sale, state forest roads must be graded. In general, this will require a road grader to shape up the roads after forest products have been hauled off site. This includes cleaning of drainage areas, grading, crowning and filling with gravel, if necessary. The grading equipment to be used must be approved by the Unit Manager or his/her representative.

#### 4.2.5 - Two Wheel Drive Condition (2/04)

All existing trail roads on and adjacent to the Sale Area must be passable by two-wheel drive traffic for the duration of the sale.

## 5 - Operations

### 5.2 - Conduct of Operations

#### 5.2.1 - Slash

##### 5.2.1.8 - Slash Height (12/08)

No slash may exceed 24" inches in height.

##### 5.2.1.11 - Slash for Reforestation (3/21)

To facilitate reforestation, the Sale Area shall be left with slash evenly distributed. Bunched tops within the cutting area shall be broken up and scattered. Stumps shall be cut low to the ground. Processing sites shall not be left with a compacted layer of slash; tops from these sites shall be hauled back into the cut area and scattered.

#### 5.2.2 - Hazard Trees/Snags

##### 5.2.2.1 - Den Trees (10/16)

Obvious hollow and/or den trees shall be protected and left standing unless they are a safety hazard.

#### 5.2.3 - Operating Restrictions

##### 5.2.3.1 - Operating Restrictions (9/11)

Within Payment Unit(s) 1-13, unless changed by written agreement, hauling is limited to the period of October 1 to March 1. This restriction is because of the very sandy nature of County Road 412. It does not hold up well to log truck traffic in the summer months.

#### 5.2.3.6 - Bark Beetle Restriction (12/08)

In the event drought creates a high risk of pine bark beetle infestation, pine is not to be cut during the period March 1 through July 1, unless all portions of trees greater than two inches in diameter are removed from the sale area, reduced to chips, or treated to the satisfaction of the Unit Manager or his/her representative, within fifteen days of being severed from the stump. Pine log decks, pulpwood piles and treetops that are piled for chipping in the fall or winter within a 1/4 mile of susceptible sites must be removed before March 15. Residual slash must not be placed in piles or rows and must be spread over the site for quick drying. The Department of Natural Resources will exercise this specification if the risk of damage warrants.

#### 5.2.32 - Decking/Landing Restoration (9/13)

All decking and landing areas must have the surface area restored to a condition equal to or better than before. This is to ensure the proper regeneration of the stand. Wood debris, chips and "cookies" from trimmings must be removed or scattered away from landing and loading areas and may not be windrowed on the edge.

#### 5.2.38 - No Decking Against Live Trees (2/04)

Cut products may not be decked against unmarked or designated leave trees.

#### 5.2.41 - Snowmobile Trail Protection (9/11)

Do not cut or damage posts with orange trail markers or traffic control signs. If the trail road is to be used for hauling during the snowmobile season, then a snow-covered base must be left on the trail. No decking of forest products will be permitted along the snowmobile trail.

### 5.4 - Soil Protection

#### 5.4.1 - Rutting Restriction, General (7/16)

Operations are to cease immediately if equipment and weather conditions result in rutting of roads and/or skid trails which is 12 inches or greater in depth and 50 feet in length. The Unit Manager or his/her representative may restrict hauling and/or skidding if ruts exceed the specified depth. With the Unit Manager or his/her representative's approval, the Purchaser may return to the area when the risk of rutting has decreased.

#### 5.4.2 - Skid Trails (2/04)

Skid trails up and down slopes should be avoided. If, however, this is unavoidable, these trails will be left in a non-erodible condition using water bars, logs, and slash. Placing of slash on these skid trails while logging is ongoing may alleviate need for any further action. At the direction of the Sale Administrator, seed, fertilizer, and mulch may also be required.

#### 5.4.3 - Erosion Control (12/08)

Skid trails or haul roads may require erosion control structures or berms per direction of the Unit Manager or his/her representative.

#### 5.4.4 - Slope Protection (9/19)

Skid trails and roads on slopes shall be water barred with slash and stumps as soon as use is complete to prevent erosion.

#### 5.4.5 - Soil Caution (11/04)

Care must be taken to minimize soil damage due to the sandy soils.

### 5.8 - Protection of Endangered Species

#### 5.8.5 - Protection of Raptor Nests (3/13)

All trees with raptor nests will be protected if found during harvesting operations. Notification will be made to the Unit Manager or his/her representative who will notify the Wildlife Biologist so an onsite evaluation and recommendation can be made, if necessary.

## 6 - Safety and Fire Prevention

### 6.2 - Signing

#### 6.2.1 - Road Posting (10/20)

The Purchaser is responsible for posting and maintaining caution signs on County Road 412 prior to beginning operations. The

road must be posted at appropriate distances from the Sale Area to warn of logging activity and truck traffic. Signs must be removed when harvest operations are suspended or completed. The DNR will provide these signs.

#### 6.2.2 - Snowmobile Trail Posting (10/20)

The Purchaser is responsible for posting and maintaining caution signs on snowmobile trail prior to beginning operations during the snowmobile season (approximately December 1 to March 31). The trail must be posted at appropriate distances from the Sale Area to warn of logging activity and truck traffic. Signs must be removed when harvest operations are suspended or completed. The DNR will provide these signs.

### **7 - Other Conditions**

#### 7.2 - Extensions

##### 7.2.1 - One Year Extension (2/04)

Given justification, only one (1), one-year extension may be granted if the contract has been paid for in full.

#### 7.3 - Contract Modifications

##### 7.3.3 - Modification for Reforestation (8/05)

When contractual work of Purchaser has been accepted for any Payment Unit identified on Sale Area Map, Payment Unit will be eliminated from the Sale Area on written notice so that reforestation operations can begin.



**TIMBER SALE MAP**

This information provided by authority of Part 525, 1994 PA 451, as amended.

Sale Number

**42-017-24**

Date

**08/12/2024**

Forest Management Unit

Newberry Mgt Unit

County

Luce

Mapped By: Payment

Cruised By: River Valley Forestry

Scale

**1:27,800**

Page

**1**

Of

**1**

Township  
50N

Range  
08W

Section(s) and Subdivision(s) NW,NE; Sec. 22 NW,SESW; Sec. 27 N1/2NW;  
Sec. 15 SWSW; Sec. 16 W1/2SW; Sec. 17 E1/2SE; Sec. 20 E1/2NE,N1/2SW,SWSW,N1/2SE; Sec. 21

**Cover Type**

A = Aspen	J = Jack Pine	O = Oak	U = Upland Brush
B = Paper Birch	K = Rock	P = Lowland Poplar	UM = Upland Mix Forest
C = Cedar	L = Lowland Brush	Q = Mixed Swamp Conifer	V = Bog or Marsh
D = Treed Bog	LM = Lowland Mix Forest	R = Red Pine	W = White Pine
E = Swamp Hardwoods	M = Maple, Beech, Birch	S = Black Spruce	X = Non Stocked
F = Spruce/Fir	MC = Mixed Conifer	T = Tamarack	Y = Sand
G = Grass	MD = Mixed Deciduous		Z = Water
H = Hemlock	N = Marsh		

**Density**

0 = Non Stocked	5 = Pole Timber Medium
1 = Seedling Sapling Poor	6 = Pole Timber Well
2 = Seedling Sapling Medium	7 = Saw Timber Poor
3 = Seedling Sapling Well	8 = Saw Timber Medium
4 = Pole Timber Poor	9 = Saw Timber Well

**Locator Map (1:200,000)**

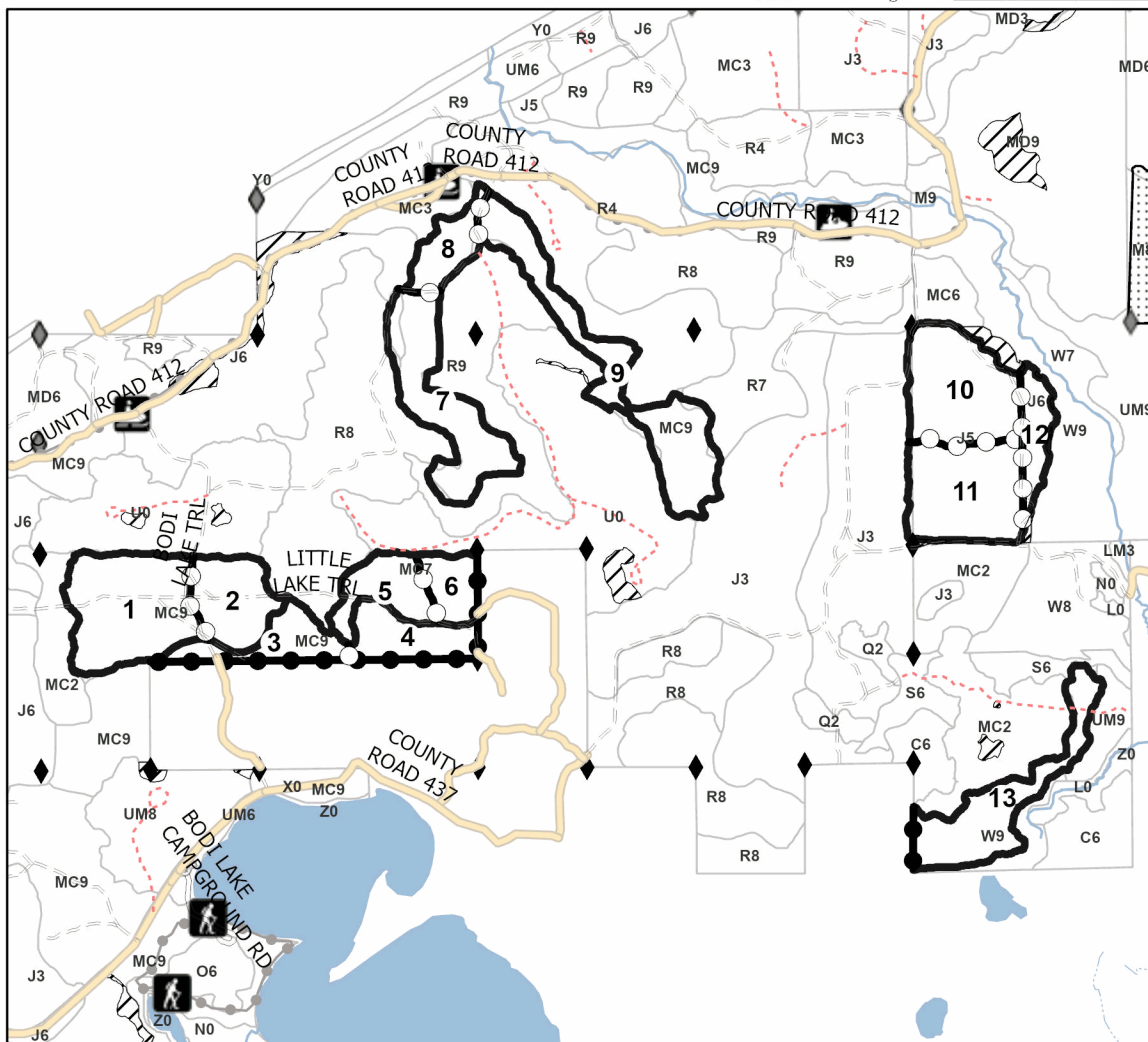


PU #	Acres	PU #	Acres	PU #	Acres
1	44.4	6	11.6	11	37.8
2	22.4	7	37.5	12	11.7
3	16.8	8	13.1	13	32.7
4	18.3	9	46.3		
5	17.3	10	38.5		

**Bear Surprise Pine**

**348.1 Acres**

0 0.42 0.85 1.7 Miles



**Legend**

- Payment Unit
  - Nearby Timber Sale
  - Stand
  - Retention Areas
  - Against State (Red)
  - Payment Unit (Yellow)
  - Private Line (Blue)
  - Recreational Trail
  - Field Grade Corner
  - Survey Grade Corner
- DNR Roads**
- Primary Forest Road
  - Secondary Forest Road
  - Forest Access Route
  - Administrative Access Only
  - Non-DNR Road

Use QR Code to open Map in App



## TIMBER SALE INFORMATION

Dark Side of the Dune (42-020-24)  
T50N, R08W, SEC. 17; T50N, R08W, SEC. 20.  
Luce County (Advertised Price \$92,856.30)

**SALE NOTE:** The County must be contacted prior to crossing or harvesting in the County Road R-O-W. This applies to Payment Units 2-3 and County Road 412.

The "Trail 8" or County Road 412 is a snowmobile trail and is shown on the Timber Sale Map. See Sale Spec 5.2.41 for restrictions.

It is recommended, but not required, that within Payment Unit(s) 1-3, hauling occur during the fall or early winter months because of tourist traffic on County Road 412.

A recreation site such as a trail, pathway, or campground is within the sale area or the vicinity. Certain restrictions/specifications may be applicable including time restrictions.

A timber sale contract for this lump sum, sealed bid timber sale will be awarded to the responsible bidder offering the highest sealed bid price. All units of volume listed below were estimated using the Inventory Manager computer program and the new Michigan taper model. Bids must be at or above the following advertised price for each product and species:

<u>PRODUCTS &amp; SPECIES</u>	<u>ESTIMATED UNITS*</u>	<u>ADVERTISED PRICE</u>
Pulpwood		
Black Spruce	11 Cords	\$ 5.20 / Cord
Jack Pine	1,729 Cords	\$ 17.40 / Cord
Mixed Hardwood	12 Cords	\$ 9.70 / Cord
Paper Birch	16 Cords	\$ 2.50 / Cord
Red Pine	1,118 Cords	\$ 54.45 / Cord
White Pine	102 Cords	\$ 16.50 / Cord

\* The total volume is statistically estimated within plus (+) or minus (-) 13.01 percent. There are an estimated 2,988 cords on this timber sale, plus or minus 389 cords at the 95% confidence level. The estimated units are final and not subject to adjustment. Prospective bidders are urged to examine this timber and to make their own estimates of quantity and quality.

### **BOND AND PAYMENT SCHEDULE:**

1. A bond in the amount of \$4,643.00 to insure faithful performance of the conditions of the contract will be deposited by the successful bidder within 21 days of the sale award.
2. Cutting in any sale or unit without the required advance payment would be considered a trespass.
3. Total payment must be paid in advance or according to the following schedule :
  - (a) Ten percent (10%) of the sale value must be paid within 21 days of the sale award.
  - (b) The 10% down payment will be credited towards the first unit cut.
  - (c) Payment for each of the following units must be made before cutting begins in that unit:

<u>PAYMENT UNIT NUMBER</u>	<u>PERCENT OF TOTAL SALE VALUE</u>
01	31.1%
02	45.3%
03	22.2%
04	1.4%

4. If no cutting takes place, the 10% down payment will not be refunded.
5. Operations on the contract issued will terminate on 12/31/2029.

### **SALE STATISTICS**

Volumes were calculated in cubic feet using the Michigan taper model. Cubic foot volume includes all wood inside bark for the product indicated. For display purposes, cubic feet were converted to cords and MBF using a simple conversion factor, e.g. 79 cubic feet per cord and 185 cubic feet per MBF. The cubic foot volumes are precise; the cords and MBF volumes are not. Cubic foot volume cannot be directly converted to cords or boards with precision.

SALE VOLUMES

The total estimated sale volume may not equal the sum of the species/products due to the nature of statistical calculations associated with double sampling methodology.

VOLUME			STATISTICAL RANGE IN CORDS	
TOTAL CUBIC FEET	TOTAL CORDS	PERCENT ERROR	MINIMUM	MAXIMUM
236,039	2,988	13.01%	2,599	3,377

VDU VOLUMES

A VDU is a Volume Determination Unit. Volumes and their associated statistics are calculated at the VDU level and summarized to the sale level. There is often a one to one relationship between a VDU and a Payment Unit, but not always, depending on the cruise design. Refer to the VDU TO PAYMENT UNIT table.

	VOLUME			RANGE IN CORDS	
VDU	TOTAL CUBIC FEET	TOTAL CORDS	PERCENT ERROR	MINIMUM	MAXIMUM
4	232,718	2,946	13.17%	2,558	3,334
75	3,321	42	68.36%	13	71
TOTAL:	236,039	2,988		2,571	3,405

VDU TO PAYMENT UNIT

When a VDU is associated with more than one Payment Unit (PU), the VDU volumes are assigned to the PU based on acres of the VDU within the PU.

VDU	VDU ACRES	PU	PU ACRES
4	101.6	1	32.1
		2	46.7
		3	22.8
75	6.1	4	6.1
TOTAL:	107.7		107.7



**DESCRIPTION OF TIMBER BY PAYMENT UNIT (PU)**

PU	MARKET GROUP	PRODUCT	QUANTITY	UNIT	ACRES	ADVERTISE PRICE
1	Black Spruce Jack Pine Mixed Hardwood <i>Red Maple</i> <i>Red Oak</i> Paper Birch Red Pine White Pine	Pulpwood	3 538 4 3 1 5 348 32	Cords Cords Cords Cords Cords Cords Cords Cords	32.1	\$28,904.70
2	Black Spruce Jack Pine Mixed Hardwood <i>Red Maple</i> <i>Red Oak</i> Paper Birch Red Pine White Pine	Pulpwood	6 783 5 3 2 7 507 47	Cords Cords Cords Cords Cords Cords Cords Cords	46.7	\$42,103.05
3	Black Spruce Jack Pine Mixed Hardwood <i>Red Maple</i> <i>Red Oak</i> Paper Birch Red Pine White Pine	Pulpwood	2 382 3 2 1 3 248 23	Cords Cords Cords Cords Cords Cords Cords Cords	22.8	\$20,576.90
4	Jack Pine Paper Birch Red Pine	Pulpwood	26 1 15	Cords Cords Cords	6.1	\$1,271.65
TOTAL:			2,988	Cords		

## **Sale Specific Conditions & Requirements**

**Sale Name: Dark Side of the Dune**

**Sale Number: 42-020-24 Seq#: 1**

### **1 - Sale Area**

#### **1.2 - Boundaries**

##### **1.2.1 - Painted Boundaries (9/19)**

The sale boundary and Payment Unit boundaries are marked and identified by blue, red and yellow paint. Exterior sale boundary lines against state are marked with red paint. Interior Payment Unit boundaries are marked with yellow paint. Exterior sale boundary lines against private are marked with blue paint. The painted boundary line trees are not Included Timber and are to be protected unless marked with orange paint. Yellow painted trees designating an interior Payment Unit boundary are only to be cut when all surrounding Payment Units have been paid.

### **2 - Timber Specifications**

#### **2.1 - Included Timber**

##### **2.1.1 - Clearcut Unit(s) with Unmerchantable Trees (6/14)**

Within Payment Unit(s) 1-3, cut all trees that are two (2) inches or more at DBH, except within Payment Units 2 and 3, do not cut any oak that may exist within a tree length buffer along County Road 412.

##### **2.1.3 - Cut Tree Marked Unit(s) (12/08)**

Within Payment Unit(s) 4, all red pine, white pine and paper birch trees are designated for cutting when marked with orange paint above and below stump height, regardless of merchantability. In addition, all jack pine is designated for cutting, regardless of merchantability. Do not cut any oak.

#### **2.2 - Utilization**

##### **2.2.3 - Stump heights (4/07)**

Stump heights within the Sale Area shall not exceed 6 inches for all trees. This is in order to facilitate planting operations.

### **3 - Payments**

#### **3.3 - Pre-measured Sales**

##### **3.3.4 - Dividing Payment Units (7/14)**

Payment Unit(s) 1-3 may be divided at the request of the Purchaser and upon approval of the Unit Manager. Dividing Payment Units is a contract modification which requires a Timber Sale Contract Amendment. There will be only one division per Payment Unit.

#### **3.4 - Damaged Timber**

##### **3.4.3 - Special Protection Areas (8/11)**

The Purchaser shall protect special protection areas from damage by the Purchaser's operations. Special protection areas are marked with a red boundary line. The Purchaser shall not operate any equipment within special protection areas. These are critical dunes with slopes over 25% and are not permitted to be operated on with equipment.

### **4 - Transportation**

#### **4.1 - Construction**

##### **4.1.3 - Slash and Earthen Piles (8/04)**

Piles or windrows of earth along roads and landings that have been widened or constructed shall be leveled. Slash from road maintenance or construction, including stumps, shall be dispersed throughout the sale.

##### **4.1.4 - Timber Removed for Construction (3/23)**

Trees cut or damaged in the process of pre-approved road, landing, or skid trail construction will be decked in an area separate from other Designated Timber and not removed until measured by the Sale Administrator. Payment will be made at contract prices or average prices, if not on the contract. This pertains to roads constructed or improved to access the Sale Area from the east.

#### 4.1.6 - Road Construction (4/24)

Construction of new roads or improvements of existing roads shall be done in such a way as to minimize the environmental and visual impacts. Merchantable trees shall be cut and utilized unless otherwise directed. Non-merchantable trees shall be severed and laid flat on the ground. Slash shall be scattered, and not left in windrows and kept a minimum of 10 feet back from the road edge. Stumps shall be set upright, not left on edge, and be moved at least 10 feet away from the road edge. Disturbed soil shall be feathered into the woods and not left in berms or windrows.

#### 4.1.7 - Road Closure (10/11)

All new roads built into the sale must be blocked to vehicle traffic within 30 days of completion of hauling. All stumps from road building and landing construction must be reserved to block any newly constructed roads upon completion of the sale. These stumps must be scattered along the road system to prohibit vehicular movement. Temporary berms may be required if no sale activity occurs for 30 or more consecutive days. Contact the Sale Administrator for specific details of design and placement.

### 4.2 - Maintenance

#### 4.2.4 - Grading (10/16)

For completion of the sale, state forest roads must be graded. In general, this will require a road grader or bulldozer to shape up the roads after forest products have been hauled off site. This includes cleaning of drainage areas, grading, crowning and filling with gravel, if necessary. The grading equipment to be used must be approved by the Unit Manager or his/her representative.

### 4.3 - Public Right-of-Way

#### 4.3.2 - County R-O-W (12/06)

The County must be contacted prior to crossing or harvesting in the County Road R-O-W. This applies to Payment Units 2-3 and County Road 412.

## 5 - Operations

### 5.2 - Conduct of Operations

#### 5.2.1 - Slash

##### 5.2.1.8 - Slash Height (12/08)

No slash or tree tops may exceed 24 inches in height.

##### 5.2.1.11 - Slash for Reforestation (3/21)

To facilitate reforestation, Payment Unit(s) 1-3 shall be left with slash evenly distributed. Bunched tops within the cutting area shall be broken up and scattered. Stumps shall be cut low to the ground. Processing sites shall not be left with a compacted layer of slash; tops from these sites shall be hauled back into the cut area and scattered.

#### 5.2.2 - Hazard Trees/Snags

##### 5.2.2.1 - Den Trees (10/16)

Obvious hollow and/or den trees shall be protected and left standing unless they are a safety hazard.

#### 5.2.3 - Operating Restrictions

##### 5.2.3.6 - Bark Beetle Restriction (12/08)

In the event drought creates a high risk of pine bark beetle infestation, pine is not to be cut during the period March 1 through July 1, unless all portions of trees greater than two inches in diameter are removed from the sale area, reduced to chips, or treated to the satisfaction of the Unit Manager or his/her representative, within fifteen days of being severed from the stump. Pine log decks, pulpwood piles and treetops that are piled for chipping in the fall or winter within a 1/4 mile of susceptible sites must be removed before March 15. Residual slash must not be placed in piles or rows and must be spread over the site for quick drying. The Department of Natural Resources will exercise this specification if the risk of damage warrants.

##### 5.2.21 - Chains (6/11)

To help promote scarification and natural pine regeneration, it is advised that rubber wheeled harvesters and forwarders run with chains. If the sale is whole tree harvested with grapple skidders the chains will not be needed.

## 5.2.22 - Operating Caution

### 5.2.22.1 - Operating Caution (6/11)

It is recommended, but not required, that within Payment Unit(s) 1-3, hauling occur during the fall or early winter months. The reason for the recommendation is because of tourist traffic on County Road 412.

## 5.2.31 - Landing Locations (9/13)

Landing areas are marked on the Timber Sale Map. Landings should be confined to these designated sites unless otherwise authorized by the Unit Manager or his/her representative. In general, landings are limited to a "T" turnaround which will accommodate a truck with a 50 foot trailer. No landing may be placed along County Road 412.

## 5.2.32 - Decking/Landing Restoration (9/13)

All decking and landing areas must have the surface area restored to a condition equal to or better than before. This is to ensure the proper regeneration of the stand. Wood debris, chips and "cookies" from trimmings must be removed or scattered away from landing and loading areas and may not be windrowed on the edge.

## 5.2.41 - Snowmobile Trail Protection (9/11)

The "Trail 8" or County Road 412 is a snowmobile trail and is shown on the Timber Sale Map. Do not cut or damage posts with orange trail markers or traffic control signs. If the trail/road is to be used for hauling during the snowmobile season, then a snow-covered base must be left on the trail. The snowmobile trail may only be crossed at right angles. No decking of forest products will be permitted along the snowmobile trail. All stumps within 20 feet of the snowmobile trail must be cut at ground level.

## 5.4 - Soil Protection

### 5.4.1 - Rutting Restriction, General (7/16)

Operations are to cease immediately if equipment and weather conditions result in rutting of roads and/or skid trails which is 12 inches or greater in depth and 50 feet in length. The Unit Manager or his/her representative may restrict hauling and/or skidding if ruts exceed the specified depth. With the Unit Manager or his/her representative's approval, the Purchaser may return to the area when the risk of rutting has decreased.

### 5.4.2 - Skid Trails (2/04)

Skid trails up and down slopes should be avoided. If, however, this is unavoidable, these trails will be left in a non-erodible condition using water bars, logs, and slash. Placing of slash on these skid trails while logging is ongoing may alleviate need for any further action. At the direction of the Sale Administrator, seed, fertilizer, and mulch may also be required.

### 5.4.4 - Slope Protection (9/19)

Skid trails and roads on slopes shall be water barred with slash and stumps as soon as use is complete to prevent erosion. Extra care should be taken to avoid slopes and protect the sandy soil.

### 5.4.5 - Soil Caution (11/04)

Care must be taken to minimize soil damage due to the sandy soils.

## 5.8 - Protection of Endangered Species

### 5.8.5 - Protection of Raptor Nests (3/13)

All trees with raptor nests will be protected if found during harvesting operations. Notification will be made to the Unit Manager or his/her representative who will notify the Wildlife Biologist so an onsite evaluation and recommendation can be made, if necessary.

## 6 - Safety and Fire Prevention

### 6.2 - Signing

#### 6.2.1 - Road Posting (10/20)

The Purchaser is responsible for posting and maintaining caution signs on County Road 412 prior to beginning operations. The road must be posted at appropriate distances from the Sale Area to warn of logging activity and truck traffic. Signs must be removed when harvest operations are suspended or completed. The Purchaser will provide these signs.

#### 6.2.2 - Snowmobile Trail Posting (10/20)

The Purchaser is responsible for posting and maintaining caution signs on "Trail 8" or County Road 412 prior to beginning

operations during the snowmobile season (approximately December 1 to March 31). The trail must be posted at appropriate distances from the Sale Area to warn of logging activity and truck traffic. Signs must be removed when harvest operations are suspended or completed. The DNR will provide these signs.

## **7 - Other Conditions**

### **7.2 - Extensions**

#### **7.2.1 - One Year Extension (2/04)**

Given justification, only one (1), one-year extension may be granted if the contract has been paid for in full.

### **7.3 - Contract Modifications**

#### **7.3.3 - Modification for Reforestation (8/05)**

When contractual work of Purchaser has been accepted for any Payment Unit identified on Sale Area Map, Payment Unit will be eliminated from the Sale Area on written notice so that reforestation operations can begin.



**TIMBER SALE MAP**

This information provided by authority of Part 525, 1994 PA 451, as amended.

Sale Number

42-020-24

Date

09/30/2024

Forest Management Unit

Newberry Mgt Unit

County

Luce

Mapped By: A. Ciaramitaro

Cruised By: Newberry Unit Staff

Scale

1:15,840

Page

1

Of

1

Township  
50N

Range  
08W

Section(s) and  
Subdivision(s)

Sec. 17 S1/2SE; Sec. 20 NW, W1/2NE;

**Cover Type**

A = Aspen	J = Jack Pine	O = Oak	U = Upland Brush
B = Paper Birch	K = Rock	P = Lowland Poplar	UM = Upland Mix Forest
C = Cedar	L = Lowland Brush	Q = Mixed Swamp Conifer	V = Bog or Marsh
D = Treed Bog	LM = Lowland Mix Forest	R = Red Pine	W = White Pine
E = Swamp Hardwoods	M = Maple, Beech, Birch	S = Black Spruce	X = Non Stocked
F = Spruce/Fir	MC = Mixed Conifer	T = Tamarack	Y = Sand
G = Grass	MD = Mixed Deciduous	Z = Water	
H = Hemlock	N = Marsh		

**Density**

0 = Non Stocked	5 = Pole Timber Medium
1 = Seedling Sapling Poor	6 = Pole Timber Well
2 = Seedling Sapling Medium	7 = Saw Timber Poor
3 = Seedling Sapling Well	8 = Saw Timber Medium
4 = Pole Timber Poor	9 = Saw Timber Well

Dark Side of the Dune

Compartment: 42043 Acres: 107.7

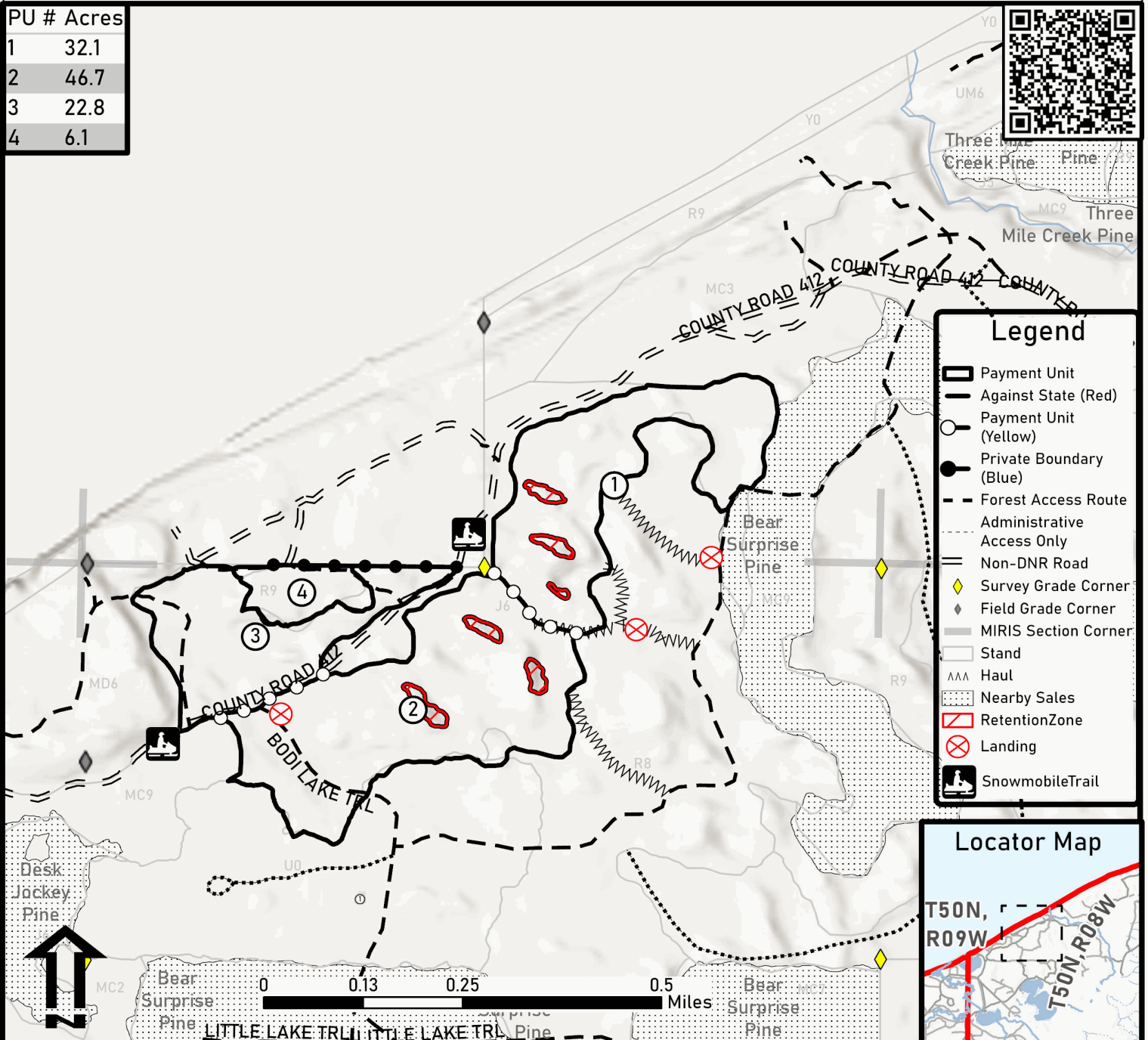
PU # Acres

1 32.1

2 46.7

3 22.8

4 6.1



Bear Surprise Pine (42-017-24)

T50N, R08W, SEC. 15; T50N, R08W, SEC. 16; T50N, R08W, SEC. 17; T50N,

In response to the notice of sale to be held 3:00 p.m. (local time) on July 10, 2025, I am hereby submitting my sealed bid ( firm offer) for the following forest products to be cut. Bids for individual species must be at or above the advertised price. All non-responsive bid forms may be rejected.

<u>PRODUCTS &amp; SPECIES</u>	<u>ESTIMATED VOLUME*</u>	<u>ADVERTISED PRICE</u>	<u>BID PRICE/UNIT</u>
Pulpwood			
Balsam Fir	10 Cords	\$ 6.95/Cord	\$ _____
Black Spruce	181 Cords	\$ 4.85/Cord	\$ _____
Jack Pine	1,329 Cords	\$ 16.25/Cord	\$ _____
Paper Birch	27 Cords	\$ 2.30/Cord	\$ _____
Red Maple	53 Cords	\$ 9.05/Cord	\$ _____
Red Pine	1,813 Cords	\$ 50.80/Cord	\$ _____
White Pine	1,672 Cords	\$ 15.40/Cord	\$ _____

\*The volumes are statistically estimated within plus (+) or minus (-) 8.77 percent at 95% confidence level. These estimated volumes are final and not subject to adjustment. Prospective bidders are urged to examine this timber and to make their own estimates of quantity and quality.

I understand that any or all bids may be rejected. All bids must be signed and all bid items must be bid or the bid form may be rejected. I also understand that consideration and awarding a contract will be based upon my past performance and ability to complete the contract based upon equipment and staffing subject to my control .

FEDERAL ID: \_\_\_\_-\_\_\_\_-\_\_\_\_ or SOCIAL SECURITY NUMBER: \_\_\_\_-\_\_\_\_-\_\_\_\_  
Company or individual bidding: \_\_\_\_\_  
Company representative's name: \_\_\_\_\_  
Address: \_\_\_\_\_  
City: \_\_\_\_\_ State: \_\_\_\_\_ Zip: \_\_\_\_\_

IF AVAILABLE, PLEASE PLACE THE PERSONALIZED LABEL FROM YOUR PROSPECTUS IN THE ABOVE BOX.

Individual or company representative's signature: \_\_\_\_\_ Date: \_\_\_\_\_

Phone number : \_\_\_\_\_ Email (optional): \_\_\_\_\_

**THE WINNING BIDDER MUST COMPLETE THE VERIFICATION OF WORKER'S DISABILITY COMPENSATION ACT  
COMPLIANCE (ON REVERSE SIDE IF DOUBLE SIDED) WITHIN 21 DAYS OF SALE AWARD DATE**



## TIMBER SALE VERIFICATION OF WORKER'S DISABILITY COMPENSATION ACT COMPLIANCE

As required by Act 317, P.A. 1969 (Worker's Compensation) and  
Part 5 of Act 451 of 1994, as amended.

### FOR DEPARTMENT USE ONLY

Sale Number (XX - XXX - XX - XX)

Forest Management Unit:

### VERIFICATION OF WORKER'S DISABILITY COMPENSATION ACT COMPLIANCE

- This verification must be completed and submitted within 21 days of contract award and prior to the issuance of the timber sale contract.
- In addition, if boxes 2B or 2C are checked, then Notice of Exclusion or Certificate of Insurance must be submitted within twenty-one (21) days of the contract award and prior to the issuance of the timber sale contract.
- All information must be typed or printed except for written signatures.

Please Check Appropriate Categories:

1. My business is organized as (you **must** check one of the boxes below):
  - A. ☐ Sole Proprietorship (individual)
  - B. ☐ Partnership
  - C. ☐ Corporation
2. You **must** check one of the boxes below:
  - A. ☐ I certify my business is a sole proprietorship and it has no employees but the sole proprietor. I am not subject to the Worker's Compensation Laws.
  - B. ☐ I certify my business has satisfied its obligation to the Worker's Compensation Act through the use of an approved Notice of Exclusion (BWC-337, Rev. 5/96). I will provide a copy of the Notice of Exclusion within 21 days of the contract award. (For questions or a copy of the BWC-337, please call the Worker's Compensation Bureau at 517-322-1195).
  - C. ☐ I certify my business has a Worker's Compensation Policy. I will provide an original Certificate of Insurance within twenty-one (21) days of the contract award.
3. If you have checked item 2(A) or 2(B), you **must** indicate the number of **both** full-time and part-time employees, other than yourself, including family members and active partners (if none, you must enter "0").

\_\_\_\_\_ Full-time Employees

\_\_\_\_\_ Part-time Employees

Name of Business		Federal ID (or) Social Security No.
Address		Telephone (       )
City	State	ZIP

*I hereby certify that the above information is true and correct. I agree to notify the Michigan DNR of any changes that occur in factors affecting my coverage during any of my present and future operations.*

\_\_\_\_\_  
Signature of Owner or Authorized Representative

\_\_\_\_\_  
Title

\_\_\_\_\_  
Date

Please complete the "SEALED BID" information on the next page



Dark Side of the Dune (42-020-24)  
T50N, R08W, SEC. 17; T50N, R08W, SEC. 20; Luce COUNTY

In response to the notice of sale to be held 3:00 p.m. (local time) on July 10, 2025, I am hereby submitting my sealed bid ( firm offer) for the following forest products to be cut. Bids for individual species must be at or above the advertised price. All non-responsive bid forms may be rejected.

<u>PRODUCTS &amp; SPECIES</u>	<u>ESTIMATED VOLUME*</u>	<u>ADVERTISED PRICE</u>	<u>BID PRICE/UNIT</u>
Pulpwood			
Black Spruce	11 Cords	\$ 5.20/Cord	\$ _____
Jack Pine	1,729 Cords	\$ 17.40/Cord	\$ _____
Mixed Hardwood	12 Cords	\$ 9.70/Cord	\$ _____
Paper Birch	16 Cords	\$ 2.50/Cord	\$ _____
Red Pine	1,118 Cords	\$ 54.45/Cord	\$ _____
White Pine	102 Cords	\$ 16.50/Cord	\$ _____

\*The volumes are statistically estimated within plus (+) or minus (-) 13.01 percent at 95% confidence level. These estimated volumes are final and not subject to adjustment. Prospective bidders are urged to examine this timber and to make their own estimates of quantity and quality.

I understand that any or all bids may be rejected. All bids must be signed and all bid items must be bid or the bid form may be rejected. I also understand that consideration and awarding a contract will be based upon my past performance and ability to complete the contract based upon equipment and staffing subject to my control .

FEDERAL ID: \_\_\_\_ - \_\_\_\_ - \_\_\_\_ or SOCIAL SECURITY NUMBER: \_\_\_\_ - \_\_\_\_ - \_\_\_\_

Company or individual bidding: \_\_\_\_\_

Company representative's name: \_\_\_\_\_

Address: \_\_\_\_\_

City: \_\_\_\_\_ State: \_\_\_\_\_ Zip: \_\_\_\_\_

IF AVAILABLE, PLEASE PLACE THE PERSONALIZED LABEL FROM YOUR PROSPECTUS IN THE ABOVE BOX.

Individual or company representative's signature: \_\_\_\_\_ Date: \_\_\_\_\_

Phone number : \_\_\_\_\_ Email (optional): \_\_\_\_\_

**THE WINNING BIDDER MUST COMPLETE THE VERIFICATION OF WORKER'S DISABILITY COMPENSATION ACT  
COMPLIANCE (ON REVERSE SIDE IF DOUBLE SIDED) WITHIN 21 DAYS OF SALE AWARD DATE**



## TIMBER SALE VERIFICATION OF WORKER'S DISABILITY COMPENSATION ACT COMPLIANCE

As required by Act 317, P.A. 1969 (Worker's Compensation) and  
Part 5 of Act 451 of 1994, as amended.

### FOR DEPARTMENT USE ONLY

Sale Number (XX - XXX - XX - XX)

Forest Management Unit:

### VERIFICATION OF WORKER'S DISABILITY COMPENSATION ACT COMPLIANCE

- This verification must be completed and submitted within 21 days of contract award and prior to the issuance of the timber sale contract.
- In addition, if boxes 2B or 2C are checked, then Notice of Exclusion or Certificate of Insurance must be submitted within twenty-one (21) days of the contract award and prior to the issuance of the timber sale contract.
- All information must be typed or printed except for written signatures.

Please Check Appropriate Categories:

1. My business is organized as (you **must** check one of the boxes below):
  - A. ☐ Sole Proprietorship (individual)
  - B. ☐ Partnership
  - C. ☐ Corporation
2. You **must** check one of the boxes below:
  - A. ☐ I certify my business is a sole proprietorship and it has no employees but the sole proprietor. I am not subject to the Worker's Compensation Laws.
  - B. ☐ I certify my business has satisfied its obligation to the Worker's Compensation Act through the use of an approved Notice of Exclusion (BWC-337, Rev. 5/96). I will provide a copy of the Notice of Exclusion within 21 days of the contract award. (For questions or a copy of the BWC-337, please call the Worker's Compensation Bureau at 517-322-1195).
  - C. ☐ I certify my business has a Worker's Compensation Policy. I will provide an original Certificate of Insurance within twenty-one (21) days of the contract award.
3. If you have checked item 2(A) or 2(B), you **must** indicate the number of **both** full-time and part-time employees, other than yourself, including family members and active partners (if none, you must enter "0").

\_\_\_\_\_ Full-time Employees

\_\_\_\_\_ Part-time Employees

Name of Business		Federal ID (or) Social Security No.
Address		Telephone (       )
City	State	ZIP

*I hereby certify that the above information is true and correct. I agree to notify the Michigan DNR of any changes that occur in factors affecting my coverage during any of my present and future operations.*

\_\_\_\_\_  
Signature of Owner or Authorized Representative

\_\_\_\_\_  
Title

\_\_\_\_\_  
Date

Please complete the "SEALED BID" information on the next page