



**DEPARTMENT OF NATURAL RESOURCES  
STATE OF MICHIGAN  
TIMBER SALE PROSPECTUS #7566**

**SCHEDULED SALE DATE AND TIME: 9:00 a.m. (local time) on June 11, 2025.**

**LOCATION: PIGEON RIVER COUNTRY MGMT UNIT, PO BOX 456, 9966 TWIN LAKES ROAD, VANDERBILT, MI 49795.**

**PROSPECTUS NOTE:** These sales have received damage from the Ice Storm in late March 2025. The Purchaser should harvest the wood as soon as possible.

The bidder is advised to inspect the sale area and review the location, estimated volumes, operating costs and contract terms of proposed sales. Please be aware that some landowners may request 60 days or more notice for access across their land.

Notice is hereby given that bids will be received by the Unit Manager, PIGEON RIVER COUNTRY MANAGEMENT UNIT, for certain timber on the following described lands:

Ice Big Pine (53-013-25) / T32N, R01W, SEC. 16, S1/2NW,SW,W1/2SE.

T32N, R01W, SEC. 17, E1/2SE.

T32N, R01W, SEC. 20, SENE.

T32N, R01W, SEC. 21, W1/2NW.

Otsego County, Advertised Price \$14,761.50, 217.0 Acres, Red Pine.

SALE NOTE: This sale has been reduced due to "no bid" on previous advertisement.

This is an ice storm salvage sale. All payment units will be scaled by Sale Administrator.

A recreation site such as a trail, pathway, or campground is within the sale area or the vicinity. Certain restrictions/specifications may be applicable including time restrictions.

Ice Osmun Pine (53-014-25) / T34N, R01W, SEC. 26, N1/2NW,SENW.

Cheboygan County, Advertised Price \$1,940.25, 28.5 Acres, Red Pine.

SALE NOTE: This sale has been reduced, as it was a "no bid" on previous advertisements.

This is an ice storm salvage sale. All payment units will be scaled by Sale Administrator.

Ice Pick Jack (53-017-25) / T33N, R01E, SEC. 26, S1/2SW.

T33N, R01E, SEC. 35, NW.

Cheboygan County, Advertised Price \$2,575.00, 77.7 Acres, Jack Pine.

SALE NOTE: This is an ice salvage sale with a short contract length. The sale must be harvested promptly

Ice-y Hot Pine (53-018-25) / T32N, R02W, SEC. 6, W1/2NW.

T32N, R02W, SEC. 7, S1/2NW,NESW,S1/2SW,SESE.

T32N, R03W, SEC. 12, N1/2NE,SWNE.

Otsego County, Advertised Price \$15,777.60, 99.2 Acres, Red Pine.

SALE NOTE: The following are red pine damage estimates for partial harvest Payment Units: Payment Unit 2 - 30% red pine damage; Payment Unit 4 - 20% red pine damage; Payment Unit 5 - 30% red pine damage.

## BID INSTRUCTIONS (VER. 10/10/2022):

### 1. Scheduled Bid Location, Date, and Time (2/11)

Bids must be received by the Unit Manager, PIGEON RIVER COUNTRY OFFICE, PO Box 456 9966 Twin Lakes Road, Vanderbilt, MI 49795, no later than 9:00 a.m. (local time) on June 11, 2025. For further information concerning this sale, contact Mark Monroe at 989-983-4101 extension .

### 2. Bidder's Qualifications (10/22)

If all or part of a timber sale was prepared by a private contractor, the contractor and that contractor's company are not permitted to bid on the timber sale. A person must be 18 years of age or older to purchase timber. Permanent employees of the Department of Natural Resources or members of their immediate household may not bid. Former employees, in the permanent or seasonal class, may not bid until 3 months after the last day of active duty. Bids will not be accepted from individuals or companies appearing on the DNR/FRD No-Bid List. This list contains the names of purchasers who previously failed to execute a contract within 21-days or who have a history of poor performance.

### 3. Preparation of Sealed Bids (5/16)

Bid Forms may be completed online thru Michigan DNR Timber Sale Online Bidding (OLB) at [www.michigan.gov/timberbidding](http://www.michigan.gov/timberbidding) or by completing the hardcopy Bid Form found in the Timber Sale Prospectus . Hardcopy Bid Forms shall be manually signed in ink. Registration in OLB is considered your 'signature' for all bids submitted thru that system. Bid prices must be entered for each species and product in the Bid Price column for all material subject to bidding and all fill-in blanks must be completed. If erasures or other changes appear on the hardcopy Bid Form, each erasure or change must be initialed by the person signing the bid.

### 4. Submission of Sealed Bids (5/16)

Bid forms may be obtained from the Unit Manager or thru OLB. Bids may be submitted hardcopy or thru OLB. All hardcopy bids must be submitted on the bid form and in an envelope clearly identified as described in this section. NOTE: Only one bid form per bid envelope. Sealed bids must be submitted to the Unit office designated in the prospectus and must be submitted at or prior to the time established in the prospectus. The envelope should show on the outside (a) the sale name or number and (b) the date and time of bid opening, as shown in the prospectus. Bids received after the time specified in the sale prospectus are late bids and will be rejected.

It is possible for a bidder to submit multiple bids on a single sale. For example, a bid may be submitted hardcopy and a bid may be submitted thru OLB. Or, two bidders from the same company could both submit bids on the same sale. If this were to happen, the State would accept all bids received and award the contract accordingly. All bidding and contractual requirements would apply to all bids received.

### 5. Public Opening of Sealed Bids (7/16)

If conditions permit, the sealed bids will be publicly opened and posted at the time and place set in the prospectus.

If a bidder, present at a bid opening, has submitted bids on more than one sale, that bidder may withdraw their unopened bid envelopes or announce the withdrawal of their online bid after being declared the successful bidder on one sale.

### 6. Award of Contract (1/11)

Award of the contract will be made to the Bidder whose bid, conforming to the prospectus, is most advantageous to the State of Michigan on the basis of total value at rates bid for the estimated quantities. The State reserves the right to reject any bid or waive any minor irregularity in bids received. A written award mailed (or otherwise furnished) to the successful Bidder shall be deemed to result in a binding contract without further action by either party.

### 7. Down Payment (1/11)

The Bidder to whom award is made must make a down payment within 21 days of the sale award. The amount of the down payment will be calculated as shown in the Bond and Payment Schedule of this prospectus. Only cash may be used to meet this requirement.

### 8. Performance Security (1/11)

As guarantee of faithful performance, a cash bond, certificate of deposit, surety bond or irrevocable letter of credit (LOC) is required within 21 days of the sale award. The amount of the performance security is shown in the Bond and

Payment Schedule of this prospectus. If an LOC or surety is used, the coverage must extend for at least 6 months beyond the contract expiration.

#### 9. Worker's Compensation (10/22)

Purchaser shall obtain worker's compensation insurance to cover claims under Michigan's Worker's Disability Compensation Act of 1969 or similar employee benefit act of any other state applicable to an employee. Verification of Worker's Disability Compensation Act Compliance must be completed and submitted within 21 days of contract award and prior to the issuance of the timber sale contract. In addition, if applicable, Notice of Exclusion or Certificate of Insurance must also be submitted.

#### 10. Timber Sale Contract (10/22)

Additional conditions and requirements common to all timber sales are listed on the timber sale contract (R4031) and are available on line at [www.michigan.gov/timber](http://www.michigan.gov/timber). Contact the Unit Manager for additional information or a sample contract. Within 21 days of the date of the award letter, the bidder must sign the contract and provide the required down payment, performance security, and verification of worker's disability compensation. The down payment and performance security shall be in accordance with the provisions of the timber sale contract, in the sums stated in this prospectus. If these actions are not taken, then the Bidder, the Bidder's corporation, and the corporation's principals may not be permitted to bid on State timber sales for a period of 3 months after the first offense, 6 months after the second offense, and 1 year after the third offense. An offense will only be counted against the Bidder for 5 years. In addition, the Bidder certifies that if awarded this contract, the Bidder will complete the timber sale contract in accordance with its terms and any modifications thereof including requirements to purchase, cut, and remove the included timber by the expiration date.

Payment Unit values in the State Forest Timber Sale Contract are calculated based on the advertised value of the Payment Unit as a percentage of the total advertised value of the contract. The advertised value of each Payment Unit is given in the Description of Timber by Payment Unit table on the Timber Sale Information page. For example, if the value of Payment Unit 1 is advertised as \$1,500 and the total Timber Sale value is advertised as \$10,000, the contract price for Payment Unit 1 will be 15% of the total bid price ( $\$1,500/\$10,000 * 100$ ).

#### 11. Disclaimer of Estimates and Bidder's Warranty of Inspection (10/22)

Before submitting this bid, the Bidder is advised and cautioned to inspect the sale area, review the requirements of the sale contract, and take other steps as may be reasonably necessary to ascertain the location, estimated volumes, construction estimates, and operating costs of the proposed sale. Failure to do so will not relieve the Bidder from responsibility for completing the contract.

The Bidder warrants that this bid is submitted solely on the basis of the Bidder's examination and inspection of the quality and quantity of the timber offered for sale and the Bidder's opinion of the value thereof and the costs of recovery. No reliance should be placed on the State of Michigan's estimates of timber quality, quantity or costs of recovery. Bidder further acknowledges that the State of Michigan: (i) expressly disclaims any warranty of fitness of timber for any purpose; (ii) offers this timber as is without any warranty of quality (merchantability) or quantity and (iii) expressly disclaims any warranty as to the quantity or quality of timber sold.

#### 12. Certification and Chain-of-Custody (10/22)

Unless otherwise indicated in the contract under section 7 – Other Conditions of the Sale Specific Conditions & Requirements, the area encompassed by this timber sale is certified to the standards of the Forest Stewardship Council (FSC) - Certificate #SCS-FM/COC-00090N and the Sustainable Forestry Initiative (SFI) - Certificate #NSF-SFIS-5Y031-SF5. Forest products from this sale may be delivered to the mill as "FSC 100% and / or SFI certified" as long as the contractor hauling the forest products is chain-of-custody (COC) certified or covered under a COC certificate from the destination mill. The purchaser is responsible for maintaining COC after leaving the sale area.

#### 13. Good Neighbor Authority (GNA) Requirements (10/22)

If the name of this timber sales contains the acronym GNA, it is authorized by the Good Neighbor Authority (GNA) and covered by various agreements between the U.S. Forest Service and the State. The timber sale occurs on federal land and the following conditions apply:

GNA contracts on US Forest Service land will not be awarded to purchasers on the Federal list of excluded parties. The System for Award Management (SAM) will be checked for active excluded parties prior to award of contract. In

addition, the Bidder to whom award is made must complete an Assurance Regarding Felony Conviction or Tax Delinquent Status for Corporate Applicants (AD-3031).

14. Good Neighbor Authority (GNA) Requirements, con't (10/22)

Bidder certifies, by signing this bid form, that to the best of Bidder's knowledge that the following representations are accurate and complete.

- a. That the Bidder and its principals are not presently debarred, suspended, proposed for debarment, declared ineligible, or voluntary excluded from timber sales (covered transactions) by any Federal department or agency.
- b. That the Bidder and its principals have not within a 3-year period preceding this bid been convicted of or had a civil judgment rendered against them for commission of fraud or a criminal offense in connection with obtaining , attempting to obtain, or performing a public (Federal, State, or local) transaction or contract under a public transaction; violation of Federal or State antitrust statutes or commission of embezzlement, theft, forgery, bribery, falsification or destruction of records, making false statements, or receiving stolen property.
- c. That the Bidder and its principals are not presently indicted for or otherwise criminally or civilly charged by a governmental entity (Federal, State, or local) with commission of any of the offenses enumerated in paragraph b of this certification.
- d. That the Bidder and its principals have not within a 3-year period preceding this bid had one or more public transactions (Federal, State, or local) terminated for breach or default of a timber or forest product contract.

Bidders that cannot certify this requirement, in whole or in part, shall submit an explanation with their bid.

Scott Bowen  
Director

## TIMBER SALE INFORMATION

### Ice Big Pine (53-013-25)

T32N, R01W, SEC. 16; T32N, R01W, SEC. 17; T32N, R01W, SEC. 20; T32N, R01W, SEC. 21.  
Otsego County (Advertised Price \$14,761.50)

SALE NOTE: This sale has been reduced due to "no bid" on previous advertisement.

This is an ice storm salvage sale. All payment units will be scaled by Sale Administrator.

A recreation site such as a trail, pathway, or campground is within the sale area or the vicinity. Certain restrictions/specifications may be applicable including time restrictions.

A timber sale contract for this scaled, sealed bid timber sale will be awarded to the responsible bidder offering the highest sealed bid price. All units of volume listed below were estimated using the Inventory Manager computer program and the new Michigan taper model. Bids must be at or above the following advertised price for each product and species:

| <u>PRODUCTS &amp; SPECIES</u> | <u>ESTIMATED UNITS*</u> | <u>ADVERTISED PRICE</u> |
|-------------------------------|-------------------------|-------------------------|
| Pulpwood                      |                         |                         |
| Red Pine                      | 1,514 Cords             | \$ 9.75 / Cord          |

\* The estimated units are final and not subject to adjustment. Prospective bidders are urged to examine this timber and to make their own estimates of quantity and quality.

### **BOND AND PAYMENT SCHEDULE:**

1. A bond in the amount of \$1,476.00 to insure faithful performance of the conditions of the contract will be deposited by the successful bidder within 21 days of the sale award.
  2. Cutting in any sale or unit without the required advance payment would be considered a trespass.
  3. Total payment must be paid in advance or according to the following schedule :
    - (a) Ten percent (10%) of the sale value must be paid within 21 days of the sale award.
    - (b) The 10% down payment will be credited towards the first unit cut.
    - (c) Payment for each of the following units must be made before cutting begins in that unit:
- | PAYMENT UNIT NUMBER | PERCENT OF TOTAL SALE VALUE |
|---------------------|-----------------------------|
| 01                  | 16.0%                       |
| 02                  | 55.9%                       |
| 03                  | 15.2%                       |
| 04                  | 12.9%                       |

4. If no cutting takes place, the 10% down payment will not be refunded.
5. Operations on the contract issued will terminate on 06/30/2027.

### **SALE STATISTICS**

Volumes were calculated in cubic feet using the Michigan taper model. Cubic foot volume includes all wood inside bark for the product indicated. For display purposes, cubic feet were converted to cords and MBF using a simple conversion factor, e.g. 79 cubic feet per cord and 185 cubic feet per MBF. The cubic foot volumes are precise; the cords and MBF volumes are not. Cubic foot volume cannot be directly converted to cords or boards with precision.

### **SALE VOLUMES**

The total estimated sale volume may not equal the sum of the species/products due to the nature of statistical calculations associated with double sampling methodology.

| VOLUME           |             | STATISTICAL RANGE IN CORDS |         |         |
|------------------|-------------|----------------------------|---------|---------|
| TOTAL CUBIC FEET | TOTAL CORDS | PERCENT ERROR              | MINIMUM | MAXIMUM |
| 119,563          | 1,513       | 0.00%                      | 1,513   | 1,513   |

VDU VOLUMES

A VDU is a Volume Determination Unit. Volumes and their associated statistics are calculated at the VDU level and summarized to the sale level. There is often a one to one relationship between a VDU and a Payment Unit, but not always, depending on the cruise design. Refer to the VDU TO PAYMENT UNIT table.

|        | VOLUME           |             |               | RANGE IN CORDS |         |
|--------|------------------|-------------|---------------|----------------|---------|
| VDU    | TOTAL CUBIC FEET | TOTAL CORDS | PERCENT ERROR | MINIMUM        | MAXIMUM |
| 33     | 15,367           | 195         | 0.00%         | 195            | 195     |
| 41     | 18,169           | 230         | 0.00%         | 230            | 230     |
| 61     | 19,108           | 242         | 0.00%         | 242            | 242     |
| 89     | 66,920           | 847         | 0.00%         | 847            | 847     |
| TOTAL: | 119,563          | 1,513       |               | 1,513          | 1,513   |

VDU TO PAYMENT UNIT

When a VDU is associated with more than one Payment Unit (PU), the VDU volumes are assigned to the PU based on acres of the VDU within the PU.

| VDU    | VDU ACRES | PU | PU ACRES |
|--------|-----------|----|----------|
|        |           |    |          |
| TOTAL: |           |    |          |

DESCRIPTION OF TIMBER BY PAYMENT UNIT (PU)

| PU     | MARKET GROUP | PRODUCT  | QUANTITY | UNIT  | ACRES | ADVERTISE PRICE |
|--------|--------------|----------|----------|-------|-------|-----------------|
| 1      | Red Pine     | Pulpwood | 242      | Cords | 34.7  | \$2,359.50      |
| 2      | Red Pine     | Pulpwood | 847      | Cords | 121.4 | \$8,258.25      |
| 3      | Red Pine     | Pulpwood | 230      | Cords | 33.0  | \$2,242.50      |
| 4      | Red Pine     | Pulpwood | 195      | Cords | 27.9  | \$1,901.25      |
| TOTAL: |              |          | 1,514    | Cords |       |                 |

## **Sale Specific Conditions & Requirements**

**Sale Name: Ice Big Pine**

**Sale Number: 53-013-25 Seq#: 3**

### **1 - Sale Area**

#### **1.2 - Boundaries**

##### **1.2.1 - Painted Boundaries (9/19)**

The sale boundary is identified by red paint with the following exception: Sturgeon Valley Road, Twin Lakes Road, and Road 80 form the southern, eastern, and western boundaries of Payment Unit 2, respectively, and are not painted with red paint. Road 79 is the interior Payment Unit boundary between Payment Units 1 and 2 and is not marked with paint. The painted boundary line trees are Not Included Timber and are to be protected. Disregard faded red paint outside of the boundary of Payment Unit 3.

### **2 - Timber Specifications**

#### **2.1 - Included Timber**

##### **2.1.4 - Designated Timber Unit(s) (6/17)**

Within Payment Unit(s) 1-4, red pine trees that have main boles which have broken or those that have fallen over and are on the ground are designated for cutting. Topwood that is on the ground from broken red pine may be utilized. Red pine trees that are bent more than 45 degrees from vertical may also be cut. Do not cut any other species.

#### **2.2 - Utilization**

##### **2.2.6 - Roundwood Operation Required (3/21)**

The skidding of whole trees or tree segments with limbs attached is prohibited. All products must be produced as roundwood and forwarded to existing roads or landing areas in final product length.

### **3 - Payments**

#### **3.2 - Scaled Sales**

##### **3.2.1 - Scale Location (2/04)**

Forest products will be placed for measurement in an area identified by the Sale Administrator. In addition, negotiate with the Sale Administrator to determine the frequency of the scaling.

#### **3.3 - Pre-measured Sales**

##### **3.3.4 - Dividing Payment Units (7/14)**

Payment Unit(s) 2 may be divided at the request of the Purchaser and upon approval of the Unit Manager. Dividing Payment Units is a contract modification which requires a Timber Sale Contract Amendment.

### **4 - Transportation**

#### **4.1 - Construction**

##### **4.1.3 - Slash and Earthen Piles (8/04)**

Piles or windrows of earth along roads and landings that have been widened or constructed shall be leveled. Slash from road maintenance or construction, including stumps, shall be dispersed throughout the sale.

##### **4.1.7 - Road Closure (10/11)**

Overgrown roads that are reopened must be blocked to vehicle traffic upon completion of the sale. In general, this will require constructing a four (4') foot high berm of stumps and logs covered with earth. Contact the Sale Administrator for specific details of design and placement.

##### **4.1.12 - No New Roads (1/12)**

No new roads will be permitted in any Payment Unit. All operations are limited to existing roads.

#### **4.2 - Maintenance**

##### **4.2.4 - Grading (10/16)**

For completion of the sale, and if deemed necessary by the Sale Administrator, state forest roads must be graded. In general, this will require a road grader or bulldozer to shape up the roads after forest products have been hauled off site. The grading equipment to be used must be approved by the Unit Manager or his/her representative.

#### 4.2.5 - Two Wheel Drive Condition (2/04)

All existing trail roads on and adjacent to the Sale Area must be passable by two-wheel drive traffic for the duration of the sale.

## 5 - Operations

### 5.1 - Notification

#### 5.1.1 - Pre-sale Conference (10/16)

A pre-sale conference on site between the Purchaser and Sale Administrator is required prior to beginning any operations to determine landing and road locations. The Unit Manager or his/her representative must be contacted at least five (5) days in advance to schedule the conference.

### 5.2 - Conduct of Operations

#### 5.2.2 - Hazard Trees/Snags

##### 5.2.2.1 - Den Trees (10/16)

Obvious hollow and/or den trees shall be protected and left standing unless they are a safety hazard.

#### 5.2.38 - No Decking Against Live Trees (2/04)

Cut products may not be decked against unmarked or designated leave trees.

#### 5.2.40 - Pathway Protection (10/10)

The Towermans Watch Pathway is a hiking trail and is shown on the Timber Sale Map. Do not cut trees or damage posts with blue pathway markers. Skidding across the trail may only occur in locations approved by the Sale Administrator. In addition, the closed roads bordering Payment Unit 3 are used as horse trails. Do not damage trail marker posts at road intersections.

### 5.4 - Soil Protection

#### 5.4.1 - Rutting Restriction, General (7/16)

Operations are to cease immediately if equipment and weather conditions result in rutting of roads and/or skid trails which are 12 inches or greater in depth and 25 feet in length. The Unit Manager or his/her representative may restrict hauling and/or skidding if ruts exceed the specified depth. With the Unit Manager or his/her representative's approval, the Purchaser may return to the area when the risk of rutting has decreased.

### 5.8 - Protection of Endangered Species

#### 5.8.5 - Protection of Raptor Nests (3/13)

All trees with raptor nests will be protected if found during harvesting operations. Notification will be made to the Unit Manager or his/her representative who will notify the Wildlife Biologist so an onsite evaluation and recommendation can be made, if necessary.

## 6 - Safety and Fire Prevention

### 6.2 - Signing

#### 6.2.1 - Road Posting (10/20)

The Purchaser is responsible for posting and maintaining caution signs on Sturgeon Valley Road and Twin Lakes Road prior to beginning operations. The road must be posted at appropriate distances from the Sale Area to warn of logging activity and truck traffic. Signs must be removed when harvest operations are suspended or completed. The Purchaser will provide these signs.

## 7 - Other Conditions

### 7.2 - Extensions

#### 7.2.2 - No Extensions (3/09)

There will be no extensions granted on this contract.

#### 7.2.3 - Salvage Extension (6/13)

This is a salvage sale with a short contract length. The sale must be harvested promptly. One (1), twelve (12) month extension can be applied to one (1) other State Forest Timber Sale Contract owned by the purchaser or owned by one (1) designated sub-contractor of the Purchaser that works this contract. To qualify, the contract expiration date of the contract to be extended must be within twelve (12) months from the issue date of this contract. If this is the first extension on the other State Forest Timber Sale Contract, then the 5% extension fee will be waived. If this is an additional extension, the 10% fee will be reduced to 5%. The salvage extension must be used before this contract is closed-out. This specification does not alleviate the purchaser from any contractual obligations of the extended State Forest Timber Sale Contract. Per General Condition & Requirement 7.2, extensions are at the sole discretion of the DNR.

#### 7.5 - Loss

##### 7.5.1 - Deteriorating Timber (7/09)

The Sale Area has received damage from the ice storm in late March 2025. The Purchaser should harvest the wood as soon as possible. The Department of Natural Resources is held free of responsibility of any further damage or deterioration due to delay in harvesting.

## TIMBER SALE MAP

This information provided by authority of Part 525, 1994 PA 451, as amended.

Sale Number

**53-013-25**

Date \_\_\_\_\_

05/01/2025

|                               |              |  |                                 |                          |                  |                |
|-------------------------------|--------------|--|---------------------------------|--------------------------|------------------|----------------|
| Forest Management Unit        |              | County   | Mapped By: Rekowski             | Scale<br><b>1:15,840</b> | Page<br><b>1</b> | Of<br><b>1</b> |
| Pigeon River Country Mgt Unit |              | Otsego   | Cruised By: Scaled salvage sale |                          |                  |                |
| Township<br>32N               | Range<br>01W | Section(s) and Subdivision(s)    Sec. 16 S1/2NW,SW,W1/2SE; Sec. 17 E1/2SE; Sec. 20 SENE; Sec. 21 W1/2NW; |                                 |                          |                  |                |

### Cover Type

|                     |                         |                         |                        |
|---------------------|-------------------------|-------------------------|------------------------|
| A = Aspen           | J = Jack Pine           | O = Oak                 | U = Upland Brush       |
| B = Paper Birch     | K = Rock                | P = Lowland Poplar      | UM = Upland Mix Forest |
| C = Cedar           | L = Lowland Brush       | Q = Mixed Swamp Conifer | V = Bog or Marsh       |
| D = Treed Bog       | LM = Lowland Mix Forest | R = Red Pine            | W = White Pine         |
| E = Swamp Hardwoods | M = Maple, Beech, Birch | S = Black Spruce        | X = Non Stocked        |
| F = Spruce/Fir      | MC = Mixed Conifer      | T = Tamarack            | Y = Sand               |
| G = Grass           | MD = Mixed Deciduous    |                         | Z = Water              |
| H = Hemlock         | N = Marsh               |                         |                        |

## Density

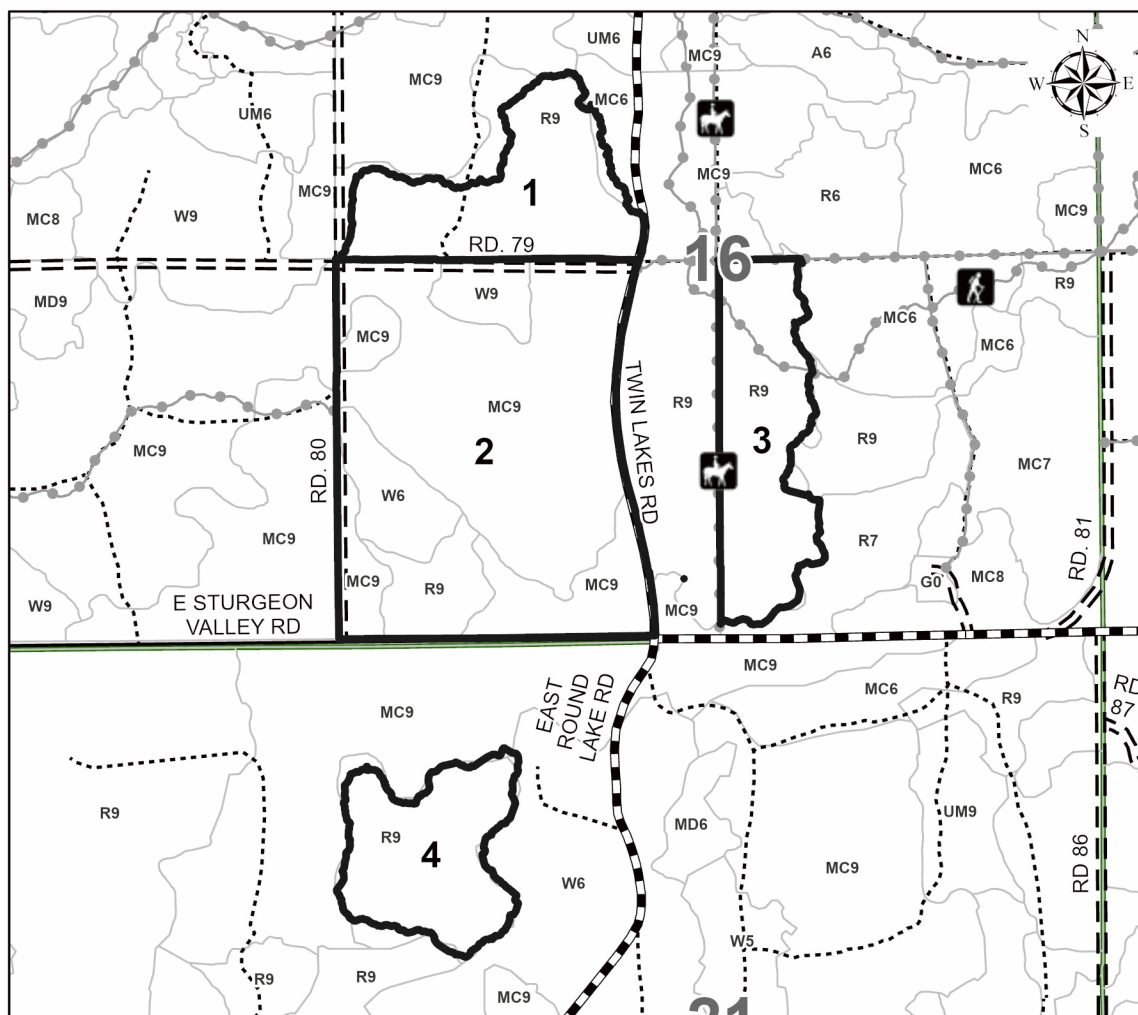
|                             |                        |
|-----------------------------|------------------------|
| 0 = Non Stocked             | 5 = Pole Timber Medium |
| 1 = Seedling Sapling Poor   | 6 = Pole Timber Well   |
| 2 = Seedling Sapling Medium | 7 = Saw Timber Poor    |
| 3 = Seedling Sapling Well   | 8 = Saw Timber Medium  |
| 4 = Pole Timber Poor        | 9 = Saw Timber Well    |

| Payment Unit<br>Number | Acres |
|------------------------|-------|
|------------------------|-------|

|   |       |
|---|-------|
| 1 | 34.7  |
| 2 | 121.4 |
| 3 | 33    |
| 4 | 27.9  |

## Ice Big Pine

## 217.0 Acres



### Legend

-  Against State (Red)
-  Stand
-  Forest Access Route
-  Administrative Access Only
-  Paved Road
-  Government Gravel/Dirt
-  Recreational Trails

Use QR Code to  
open Map in App



## TIMBER SALE INFORMATION

Ice Osmun Pine (53-014-25)  
T34N, R01W, SEC. 26.  
Cheboygan County (Advertised Price \$1,940.25)

SALE NOTE: This sale has been reduced, as it was a "no bid" on previous advertisements.

This is an ice storm salvage sale. All payment units will be scaled by Sale Administrator.

A timber sale contract for this scaled, sealed bid timber sale will be awarded to the responsible bidder offering the highest sealed bid price. All units of volume listed below were estimated using the Inventory Manager computer program and the new Michigan taper model. Bids must be at or above the following advertised price for each product and species:

| <u>PRODUCTS &amp; SPECIES</u> | <u>ESTIMATED UNITS*</u> | <u>ADVERTISED PRICE</u> |
|-------------------------------|-------------------------|-------------------------|
| Pulpwood                      |                         |                         |
| Red Pine                      | 199 Cords               | \$ 9.75 / Cord          |

\* The estimated units are final and not subject to adjustment. Prospective bidders are urged to examine this timber and to make their own estimates of quantity and quality.

### **BOND AND PAYMENT SCHEDULE:**

- A bond in the amount of \$194.00 to insure faithful performance of the conditions of the contract will be deposited by the successful bidder within 21 days of the sale award.
- Cutting in any sale or unit without the required advance payment would be considered a trespass.
- Total payment must be paid in advance or according to the following schedule :
  - Ten percent (10%) of the sale value must be paid within 21 days of the sale award.
  - The remainder is due before cutting begins.
  - Payment for each of the following units must be made before cutting begins in that unit:
 

| <u>PAYMENT UNIT NUMBER</u> | <u>PERCENT OF TOTAL SALE VALUE</u> |
|----------------------------|------------------------------------|
| 01                         | 100.0%                             |
- If no cutting takes place, the 10% down payment will not be refunded.
- Operations on the contract issued will terminate on 06/30/2027.

### **SALE STATISTICS**

Volumes were calculated in cubic feet using the Michigan taper model. Cubic foot volume includes all wood inside bark for the product indicated. For display purposes, cubic feet were converted to cords and MBF using a simple conversion factor, e.g. 79 cubic feet per cord and 185 cubic feet per MBF. The cubic foot volumes are precise; the cords and MBF volumes are not. Cubic foot volume cannot be directly converted to cords or boards with precision.

### **SALE VOLUMES**

The total estimated sale volume may not equal the sum of the species/products due to the nature of statistical calculations associated with double sampling methodology.

| <u>VOLUME</u>           |                    |                      | <u>STATISTICAL RANGE IN CORDS</u> |                |
|-------------------------|--------------------|----------------------|-----------------------------------|----------------|
| <u>TOTAL CUBIC FEET</u> | <u>TOTAL CORDS</u> | <u>PERCENT ERROR</u> | <u>MINIMUM</u>                    | <u>MAXIMUM</u> |
| 15,724                  | 199                | 0.00%                | 199                               | 199            |

### **VDU VOLUMES**

A VDU is a Volume Determination Unit. Volumes and their associated statistics are calculated at the VDU level and summarized to the sale level. There is often a one to one relationship between a VDU and a Payment Unit, but not always, depending on the cruise design. Refer to the VDU TO PAYMENT UNIT table.

|               | <u>VOLUME</u>           |                    |                      | <u>RANGE IN CORDS</u> |                |
|---------------|-------------------------|--------------------|----------------------|-----------------------|----------------|
| <u>VDU</u>    | <u>TOTAL CUBIC FEET</u> | <u>TOTAL CORDS</u> | <u>PERCENT ERROR</u> | <u>MINIMUM</u>        | <u>MAXIMUM</u> |
| 30            | 15,724                  | 199                | 0.00%                | 199                   | 199            |
| <b>TOTAL:</b> | <b>15,724</b>           | <b>199</b>         |                      | <b>199</b>            | <b>199</b>     |

**VDU TO PAYMENT UNIT**

When a VDU is associated with more than one Payment Unit (PU), the VDU volumes are assigned to the PU based on acres of the VDU within the PU.

| VDU    | VDU ACRES | PU | PU ACRES |
|--------|-----------|----|----------|
|        |           |    |          |
| TOTAL: |           |    |          |

**DESCRIPTION OF TIMBER BY PAYMENT UNIT (PU)**

| PU     | MARKET GROUP | PRODUCT  | QUANTITY | UNIT  | ACRES | ADVERTISE PRICE |
|--------|--------------|----------|----------|-------|-------|-----------------|
| 1      | Red Pine     | Pulpwood | 199      | Cords | 28.5  | \$1,940.25      |
| TOTAL: |              |          | 199      | Cords |       |                 |

## **Sale Specific Conditions & Requirements**

**Sale Name: Ice Osmun Pine**

**Sale Number: 53-014-25 Seq#: 3**

### **1 - Sale Area**

#### 1.2 - Boundaries

##### 1.2.1 - Painted Boundaries (9/19)

The sale boundary is marked and identified by red paint. Exterior sale boundary lines against state are marked with red paint. The painted boundary line trees are not Included Timber and are to be protected.

### **2 - Timber Specifications**

#### 2.1 - Included Timber

##### 2.1.4 - Designated Timber Unit(s) (6/17)

Within Payment Unit(s) 1, all red and white pine trees that have main boles which have broken, or those that have fallen over and are on the ground, are designated for cutting. Topwood that is on the ground from broken red and white pine may be utilized. Red and white pine trees that are bent more than 45 degrees from vertical may also be cut. Do not cut any other species.

##### 2.1.11 - Description of Timber Note (2/04)

Note that this is an ice storm salvage sale. All Payment Units will be scaled by the Sale Administrator.

The price for white pine, if present, within the Sale Area is \$19.00/cord.

#### 2.2 - Utilization

##### 2.2.6 - Roundwood Operation Required (3/21)

The skidding of whole trees or tree segments with limbs attached is prohibited. All products must be produced as roundwood and forwarded to existing roads or landing areas in final product length.

### **3 - Payments**

#### 3.2 - Scaled Sales

##### 3.2.1 - Scale Location (2/04)

Forest products will be placed for measurement in an area identified by the Sale Administrator. In addition, negotiate with the Sale Administrator to determine the frequency of the scaling.

### **4 - Transportation**

#### 4.1 - Construction

##### 4.1.3 - Slash and Earthen Piles (8/04)

Piles or windrows of earth along roads and landings that have been widened or constructed shall be leveled. Slash from road maintenance or construction, including stumps, shall be dispersed throughout the sale.

##### 4.1.12 - No New Roads (1/12)

No new roads will be permitted. All operations are limited to existing roads.

#### 4.2 - Maintenance

##### 4.2.5 - Two Wheel Drive Condition (2/04)

All existing trail roads on and adjacent to the Sale Area must be passable by two-wheel drive traffic for the duration of the sale.

### **5 - Operations**

#### 5.1 - Notification

##### 5.1.1 - Pre-sale Conference (10/16)

A pre-sale conference on site between the Purchaser and Sale Administrator is required prior to beginning any operations to determine landing and road locations. The Unit Manager or his/her representative must be contacted at least five (5) days in advance to schedule the conference.

## 5.2 - Conduct of Operations

### 5.2.2 - Hazard Trees/Snags

#### 5.2.2.1 - Den Trees (10/16)

Obvious hollow and/or den trees shall be protected and left standing unless they are a safety hazard.

#### 5.2.38 - No Decking Against Live Trees (2/04)

Cut products may not be decked against unmarked or designated leave trees.

## 5.4 - Soil Protection

### 5.4.1 - Rutting Restriction, General (7/16)

Operations are to cease immediately if equipment and weather conditions result in rutting of roads and/or skid trails which are 12 inches or greater in depth and 25 feet in length. The Unit Manager or his/her representative may restrict hauling and/or skidding if ruts exceed the specified depth. With the Unit Manager or his/her representative's approval, the Purchaser may return to the area when the risk of rutting has decreased.

## 7 - Other Conditions

### 7.2 - Extensions

#### 7.2.2 - No Extensions (3/09)

There will be no extensions granted on this contract.

#### 7.2.3 - Salvage Extension (6/13)

This is a salvage sale with a short contract length. The sale must be harvested promptly. One (1), twelve (12) month extension can be applied to one (1) other State Forest Timber Sale Contract owned by the purchaser or owned by one (1) designated sub-contractor of the Purchaser that works this contract. To qualify, the contract expiration date of the contract to be extended must be within twelve (12) months from the issue date of this contract. If this is the first extension on the other State Forest Timber Sale Contract, then the 5% extension fee will be waived. If this is an additional extension, the 10% fee will be reduced to 5%. The salvage extension must be used before this contract is closed-out. This specification does not alleviate the purchaser from any contractual obligations of the extended State Forest Timber Sale Contract. Per General Condition & Requirement 7.2, extensions are at the sole discretion of the DNR.

### 7.5 - Loss

#### 7.5.1 - Deteriorating Timber (7/09)

The Sale Area has received damage from the ice storm in late March 2025. The Purchaser should harvest the wood as soon as possible. The Department of Natural Resources is held free of responsibility of any further damage or deterioration due to delay in harvesting.



**TIMBER SALE MAP**

This information provided by authority of Part 525, 1994 PA 451, as amended.

Sale Number

**53-014-25**

Date

**05/02/2025**

Forest Management Unit

County

Mapped By: Rekowski

Scale

Page

Of

Pigeon River Country Mgt Unit

Cheboygan

Cruised By: Scaled salvage sale

**1:15,840**

**1**

**1**

Township  
34N

Range  
01W

Section(s) and  
Subdivision(s) Sec. 26 N1/2NW,SENW;

**Cover Type**

|                     |                         |                         |                        |
|---------------------|-------------------------|-------------------------|------------------------|
| A = Aspen           | J = Jack Pine           | O = Oak                 | U = Upland Brush       |
| B = Paper Birch     | K = Rock                | P = Lowland Poplar      | UM = Upland Mix Forest |
| C = Cedar           | L = Lowland Brush       | Q = Mixed Swamp Conifer | V = Bog or Marsh       |
| D = Treed Bog       | LM = Lowland Mix Forest | R = Red Pine            | W = White Pine         |
| E = Swamp Hardwoods | M = Maple, Beech, Birch | S = Black Spruce        | X = Non Stocked        |
| F = Spruce/Fir      | MC = Mixed Conifer      | T = Tamarack            | Y = Sand               |
| G = Grass           | MD = Mixed Deciduous    |                         | Z = Water              |
| H = Hemlock         | N = Marsh               |                         |                        |

**Density**

|                             |                        |
|-----------------------------|------------------------|
| 0 = Non Stocked             | 5 = Pole Timber Medium |
| 1 = Seedling Sapling Poor   | 6 = Pole Timber Well   |
| 2 = Seedling Sapling Medium | 7 = Saw Timber Poor    |
| 3 = Seedling Sapling Well   | 8 = Saw Timber Medium  |
| 4 = Pole Timber Poor        | 9 = Saw Timber Well    |

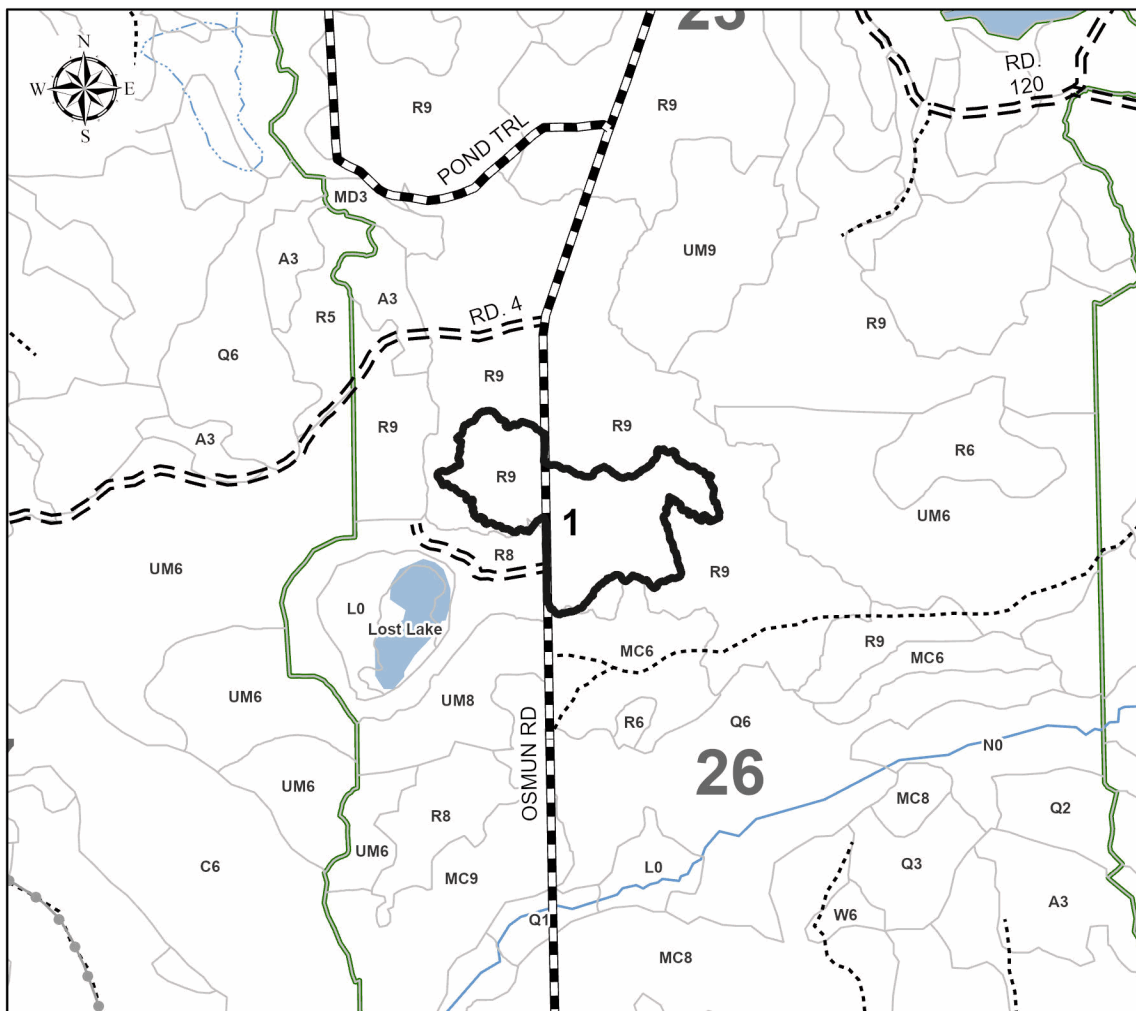
**Payment Unit Acres**  
**Number**

1 28.5

**Ice Osmun  
Pine**

**28.5 Acres**

0 0.15 0.3 0.6  
Miles



**Legend**

- Against State (Red)
- Forest Access Route
- Administrative Access Only
- Government Gravel/Dirt
- Lakes
- Intermittent Stream
- Perennial River

Use QR Code to  
open Map in App





## TIMBER SALE INFORMATION

Ice Pick Jack (53-017-25)

T33N, R01E, SEC. 26; T33N, R01E, SEC. 35.  
Cheboygan County (Advertised Price \$2,575.00)

SALE NOTE: This is an ice salvage sale with a short contract length. The sale must be harvested promptly

A timber sale contract for this scaled, sealed bid timber sale will be awarded to the responsible bidder offering the highest sealed bid price. All units of volume listed below were estimated using the Inventory Manager computer program and the new Michigan taper model. Bids must be at or above the following advertised price for each product and species:

| <u>PRODUCTS &amp; SPECIES</u> | <u>ESTIMATED UNITS*</u> | <u>ADVERTISED PRICE</u> |
|-------------------------------|-------------------------|-------------------------|
| Pulpwood                      |                         |                         |
| Jack Pine                     | 515 Cords               | \$ 5.00 / Cord          |

\* The estimated units are final and not subject to adjustment. Prospective bidders are urged to examine this timber and to make their own estimates of quantity and quality.

### **BOND AND PAYMENT SCHEDULE:**

1. A bond in the amount of \$258.00 to insure faithful performance of the conditions of the contract will be deposited by the successful bidder within 21 days of the sale award.
2. Cutting in any sale or unit without the required advance payment would be considered a trespass.
3. Total payment must be paid in advance or according to the following schedule :
  - (a) Ten percent (10%) of the sale value must be paid within 21 days of the sale award.
  - (b) The 10% down payment will be credited towards the first unit cut.
  - (c) Payment for each of the following units must be made before cutting begins in that unit:

| <u>PAYMENT UNIT NUMBER</u> | <u>PERCENT OF TOTAL SALE VALUE</u> |
|----------------------------|------------------------------------|
| 01                         | 37.3%                              |
| 02                         | 62.7%                              |

4. If no cutting takes place, the 10% down payment will not be refunded.
5. Operations on the contract issued will terminate on 06/30/2026.

### **SALE STATISTICS**

Volumes were calculated in cubic feet using the Michigan taper model. Cubic foot volume includes all wood inside bark for the product indicated. For display purposes, cubic feet were converted to cords and MBF using a simple conversion factor, e.g. 79 cubic feet per cord and 185 cubic feet per MBF. The cubic foot volumes are precise; the cords and MBF volumes are not. Cubic foot volume cannot be directly converted to cords or boards with precision.

### **SALE VOLUMES**

The total estimated sale volume may not equal the sum of the species/products due to the nature of statistical calculations associated with double sampling methodology.

| <u>VOLUME</u>           |                    | <u>STATISTICAL RANGE IN CORDS</u> |                |                |
|-------------------------|--------------------|-----------------------------------|----------------|----------------|
| <u>TOTAL CUBIC FEET</u> | <u>TOTAL CORDS</u> | <u>PERCENT ERROR</u>              | <u>MINIMUM</u> | <u>MAXIMUM</u> |
| 40,655                  | 515                | 0.00%                             | 515            | 515            |

### **VDU VOLUMES**

A VDU is a Volume Determination Unit. Volumes and their associated statistics are calculated at the VDU level and summarized to the sale level. There is often a one to one relationship between a VDU and a Payment Unit, but not always, depending on the cruise design. Refer to the VDU TO PAYMENT UNIT table.

| <u>VDU</u>    | <u>VOLUME</u>           |                    | <u>PERCENT ERROR</u> | <u>RANGE IN CORDS</u> |                |
|---------------|-------------------------|--------------------|----------------------|-----------------------|----------------|
|               | <u>TOTAL CUBIC FEET</u> | <u>TOTAL CORDS</u> |                      | <u>MINIMUM</u>        | <u>MAXIMUM</u> |
| 66            | 40,655                  | 515                | 0.00%                | 515                   | 515            |
| <b>TOTAL:</b> | <b>40,655</b>           | <b>515</b>         |                      | <b>515</b>            | <b>515</b>     |

**VDU TO PAYMENT UNIT**

When a VDU is associated with more than one Payment Unit (PU), the VDU volumes are assigned to the PU based on acres of the VDU within the PU.

| VDU    | VDU ACRES | PU | PU ACRES |
|--------|-----------|----|----------|
| 66     | 77.7      | 1  | 29.0     |
|        |           | 2  | 48.7     |
| TOTAL: | 77.7      |    | 77.7     |

**DESCRIPTION OF TIMBER BY PAYMENT UNIT (PU)**

| PU     | MARKET GROUP | PRODUCT  | QUANTITY | UNIT  | ACRES | ADVERTISE PRICE |
|--------|--------------|----------|----------|-------|-------|-----------------|
| 1      | Jack Pine    | Pulpwood | 192      | Cords | 29.0  | \$960.00        |
| 2      | Jack Pine    | Pulpwood | 323      | Cords | 48.7  | \$1,615.00      |
| TOTAL: |              |          | 515      | Cords |       |                 |

## Sale Specific Conditions & Requirements

**Sale Name: Ice Pick Jack**

**Sale Number: 53-017-25 Seq#: 1**

### 1 - Sale Area

#### 1.2 - Boundaries

##### 1.2.1 - Painted Boundaries (9/19)

The sale boundary and Payment Unit boundaries are marked and identified by red and yellow paint. Exterior sale boundary lines against state are marked with red paint. Interior Payment Unit boundaries are marked with yellow paint. Retention patches are marked with red paint; no harvesting activities may occur within these areas. All painted boundary line trees are not Included Timber and are to be protected.

### 2 - Timber Specifications

#### 2.1 - Included Timber

##### 2.1.1 - Clearcut Unit(s) with Unmerchantable Trees (6/14)

Within Payment Unit(s) 1-2, cut all trees that are two (2) inches or more at DBH, except do not cut red pine, spruce, white oak, or green marked trees. In addition, do not cut any white pine over 10 inches DBH.

##### 2.1.11 - Description of Timber Note (2/04)

Note that this is an ice storm salvage sale. All Payment Units will be scaled by Sale Administrator. Prices for individual species if present within the Sale Area are as follows:

-Mixed Hardwood \$14.00/cord

-Mixed Oak \$7.50/cord

-Mixed Aspen \$16.50/cord

-White Pine \$19.00/cord

Chipping of the Sale Area will not be required but is encouraged. If sale is chipped, the Purchaser must provide electronic confirmation of scale tickets at minimum of twice per week. To convert jack pine chip weight to cords, we will use a conversion of 1 cord = 1.75 tons or 1 cord = 3,500 pounds. This is from the USDA's Timber Management Field Book, 2008 Edition table 2.10 Weight Table for Various Woods.

#### 2.2 - Utilization

##### 2.2.3 - Stump Heights (12/24)

Stump heights within the Sale Area shall not exceed six (6) inches for all trees.

### 3 - Payments

#### 3.2 - Scaled Sales

##### 3.2.1 - Scale Location (2/04)

Forest products will be placed for measurement at an area identified by the Sale Administrator. In addition, negotiate with the Sale Administrator to determine the frequency of scaling.

#### 3.3 - Pre-measured Sales

##### 3.3.4 - Dividing Payment Units (7/14)

Payment Unit(s) #2 may be divided at the request of the Purchaser and upon approval of the Unit Manager. Dividing Payment Units is a contract modification which requires a Timber Sale Contract Amendment. There will be only one division in this Payment Unit.

#### 3.4 - Damaged Timber

##### 3.4.1 - Damaged Timber (12/24)

General Condition and Requirement 3.4 Damaged Timber, defines liquidated damages for undesignated live merchantable trees which are cut or injured. In addition, extreme care should be taken to avoid damage to red pine and oak seedlings and saplings.

### 3.6 - Payment Unit Cutting Schedule

#### 3.6.8 - Operating Period (5/16)

Once cutting begins, operations must continue until all Payment Units are completed.

## 4 - Transportation

### 4.1 - Construction

#### 4.1.3 - Slash and Earthen Piles (8/04)

Piles or windrows of earth along roads and landings that have been widened or constructed shall be leveled. Slash from road maintenance or construction, including stumps, shall be dispersed throughout the sale.

#### 4.1.7 - Road Closure (10/11)

All new roads built into the sale must be blocked to vehicle traffic upon completion of the sale. Overgrown roads that are reopened shall be considered new roads. In general, this will require constructing a four (4') foot high berm of stumps and logs covered with earth. These roads must be rendered impassable to cars and trucks.

### 4.2 - Maintenance

#### 4.2.5 - Two Wheel Drive Condition (2/04)

All existing trail roads on and adjacent to the Sale Area must be passable by two-wheel drive traffic for the duration of the sale.

## 5 - Operations

### 5.1 - Notification

#### 5.1.1 - Pre-sale Conference (10/16)

A pre-sale conference between the Purchaser and Sale Administrator is required prior to beginning any operations a Payment Unit to determine landing and road locations. The Unit Manager or his/her representative must be contacted at least three (3) days in advance to schedule the conference.

### 5.2 - Conduct of Operations

#### 5.2.2 - Hazard Trees/Snags

##### 5.2.2.1 - Den Trees (10/16)

Obvious hollow and/or den trees shall be protected and left standing unless they are a safety hazard.

#### 5.2.32 - Decking/Landing Restoration (9/13)

All decking and landing areas must have the surface area restored to a condition equal to or better than before. This is to ensure the proper regeneration of the stand. Wood debris, chips and "cookies" from trimmings must be removed or scattered away from landing and loading areas and may not be windrowed on the edge.

### 5.4 - Soil Protection

#### 5.4.1 - Rutting Restriction, General (7/16)

Operations are to cease immediately if equipment and weather conditions result in rutting of roads and/or skid trails which are 12 inches or greater in depth and 25 feet in length. The Unit Manager or his/her representative may restrict hauling and/or skidding if ruts exceed the specified depth. With the Unit Manager or his/her representative's approval, the Purchaser may return to the area when the risk of rutting has decreased.

## 7 - Other Conditions

### 7.2 - Extensions

#### 7.2.2 - No Extensions (3/09)

There will be no extensions granted on this contract.

#### 7.2.3 - Salvage Extension (6/13)

This is a salvage sale with a short contract length. The sale must be harvested promptly. One (1), twelve (12) month

extension can be applied to one (1) other State Forest Timber Sale Contract owned by the purchaser or owned by one (1) designated sub-contractor of the Purchaser that works this contract. To qualify, the contract expiration date of the contract to be extended must be within twelve (12) months from the issue date of this contract. If this is the first extension on the other State Forest Timber Sale Contract, then the 5% extension fee will be waived. If this is an additional extension, the 10% fee will be reduced to 5%. The salvage extension must be used before this contract is closed-out. This specification does not alleviate the purchaser from any contractual obligations of the extended State Forest Timber Sale Contract. Per General Condition & Requirement 7.2, extensions are at the sole discretion of the DNR.

## 7.5 - Loss

### 7.5.1 - Deteriorating Timber (7/09)

The Sale Area has received damage from the ice storm of late March 2025. The Purchaser should harvest the wood as soon as possible. The Department of Natural Resources is held free of responsibility of any further damage or deterioration due to delay in harvesting.



**TIMBER SALE MAP**

This information provided by authority of Part 525, 1994 PA 451, as amended.

Sale Number

**53-017-25**

Date

**05/27/2025**

Forest Management Unit

County

Mapped By: Rekowski

Scale

Page

Of

Pigeon River Country Mgt Unit

Cheboygan

Cruised By: Scaled sale

**1:15,840**

**1**

**1**

Township  
33N

Range  
01E

Section(s) and  
Subdivision(s) Sec. 26 S1/2SW; Sec. 35 NW;

**Cover Type**

|                     |                         |                         |                        |
|---------------------|-------------------------|-------------------------|------------------------|
| A = Aspen           | J = Jack Pine           | O = Oak                 | U = Upland Brush       |
| B = Paper Birch     | K = Rock                | P = Lowland Poplar      | UM = Upland Mix Forest |
| C = Cedar           | L = Lowland Brush       | Q = Mixed Swamp Conifer | V = Bog or Marsh       |
| D = Treed Bog       | LM = Lowland Mix Forest | R = Red Pine            | W = White Pine         |
| E = Swamp Hardwoods | M = Maple, Beech, Birch | S = Black Spruce        | X = Non Stocked        |
| F = Spruce/Fir      | MC = Mixed Conifer      | T = Tamarack            | Y = Sand               |
| G = Grass           | MD = Mixed Deciduous    | Z = Water               |                        |
| H = Hemlock         | N = Marsh               |                         |                        |

**Density**

|                             |                        |
|-----------------------------|------------------------|
| 0 = Non Stocked             | 5 = Pole Timber Medium |
| 1 = Seedling Sapling Poor   | 6 = Pole Timber Well   |
| 2 = Seedling Sapling Medium | 7 = Saw Timber Poor    |
| 3 = Seedling Sapling Well   | 8 = Saw Timber Medium  |
| 4 = Pole Timber Poor        | 9 = Saw Timber Well    |

**Payment Unit  
Number**

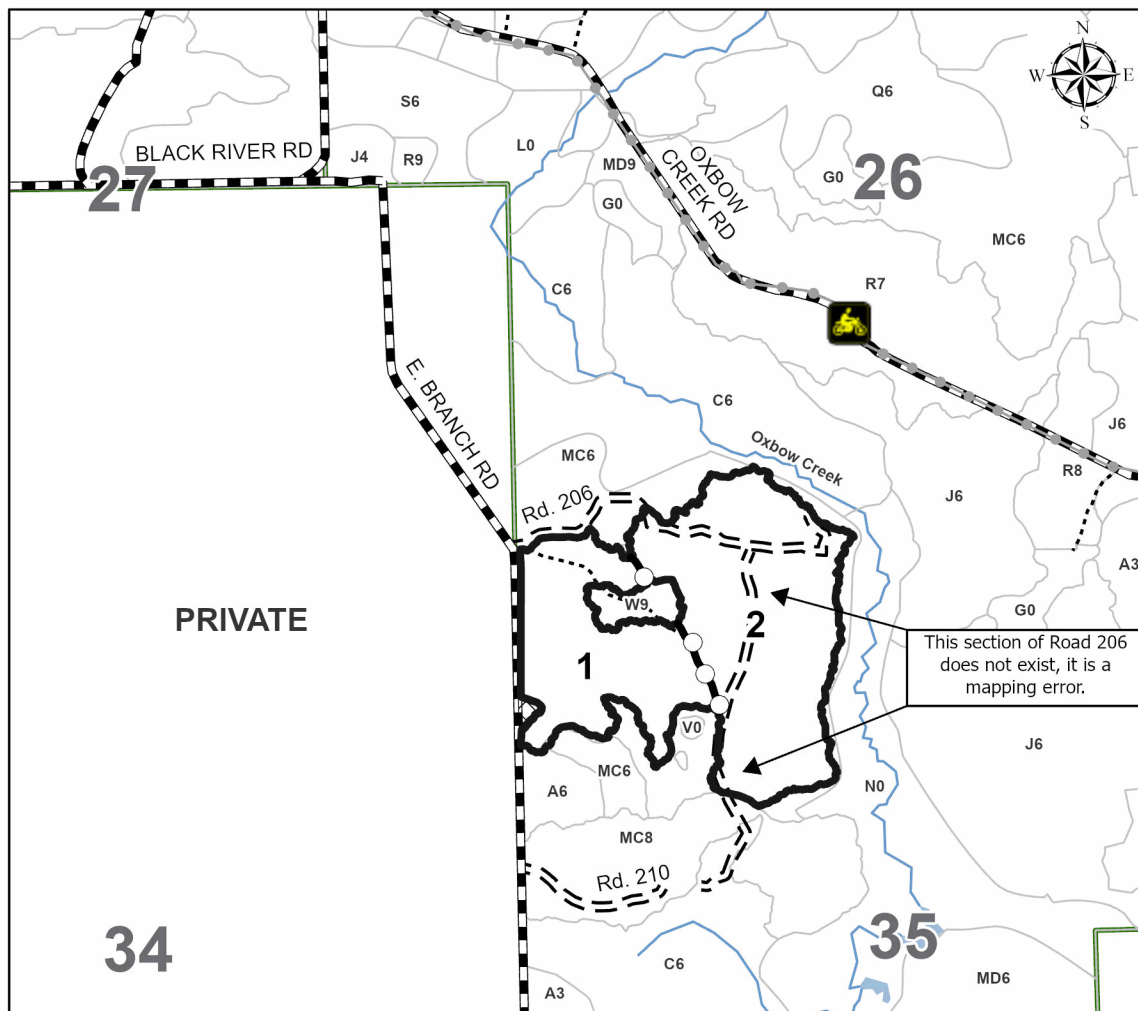
**Acres**

|   |      |
|---|------|
| 1 | 29   |
| 2 | 48.7 |

**Ice Pick Jack**

**77.7 Acres**

0 0.13 0.25 0.5  
Miles



**Legend**

- Against State (Red)
- Payment Unit (Yellow)
- Retention Areas (Red)
- Forest Access Route
- Administrative Access Only
- Government Gravel/Dirt
- Recreational Trails
- Perennial River

Use QR Code to  
open Map in App



## TIMBER SALE INFORMATION

Ice-y Hot Pine (53-018-25)

T32N, R02W, SEC. 6; T32N, R02W, SEC. 7; T32N, R03W, SEC. 12.  
Otsego County (Advertised Price \$15,777.60)

**SALE NOTE:** The following are red pine damage estimates for partial harvest Payment Units: Payment Unit 2 - 30% red pine damage; Payment Unit 4 - 20% red pine damage; Payment Unit 5 - 30% red pine damage.

A timber sale contract for this scaled, sealed bid timber sale will be awarded to the responsible bidder offering the highest sealed bid price. All units of volume listed below were estimated using the Inventory Manager computer program and the new Michigan taper model. Bids must be at or above the following advertised price for each product and species:

| <u>PRODUCTS &amp; SPECIES</u> | <u>ESTIMATED UNITS*</u> | <u>ADVERTISED PRICE</u> |
|-------------------------------|-------------------------|-------------------------|
| Pulpwood                      |                         |                         |
| Red Pine                      | 692 Cords               | \$ 22.80 / Cord         |

\* The estimated units are final and not subject to adjustment. Prospective bidders are urged to examine this timber and to make their own estimates of quantity and quality.

### **BOND AND PAYMENT SCHEDULE:**

- A bond in the amount of \$1,578.00 to insure faithful performance of the conditions of the contract will be deposited by the successful bidder within 21 days of the sale award.
- Cutting in any sale or unit without the required advance payment would be considered a trespass.
- Total payment must be paid in advance or according to the following schedule :
  - Ten percent (10%) of the sale value must be paid within 21 days of the sale award.
  - The 10% down payment will be credited towards the first unit cut.
  - Payment for each of the following units must be made before cutting begins in that unit:

| <u>PAYMENT UNIT NUMBER</u> | <u>PERCENT OF TOTAL SALE VALUE</u> |
|----------------------------|------------------------------------|
| 01                         | 10.1%                              |
| 02                         | 42.2%                              |
| 03                         | 26.3%                              |
| 04                         | 17.8%                              |
| 05                         | 3.6%                               |

- If no cutting takes place, the 10% down payment will not be refunded.
- Operations on the contract issued will terminate on 06/30/2026.

### **SALE STATISTICS**

Volumes were calculated in cubic feet using the Michigan taper model. Cubic foot volume includes all wood inside bark for the product indicated. For display purposes, cubic feet were converted to cords and MBF using a simple conversion factor, e.g. 79 cubic feet per cord and 185 cubic feet per MBF. The cubic foot volumes are precise; the cords and MBF volumes are not. Cubic foot volume cannot be directly converted to cords or boards with precision.

### **SALE VOLUMES**

The total estimated sale volume may not equal the sum of the species/products due to the nature of statistical calculations associated with double sampling methodology.

| <u>VOLUME</u>           |                    | <u>STATISTICAL RANGE IN CORDS</u> |                |                |
|-------------------------|--------------------|-----------------------------------|----------------|----------------|
| <u>TOTAL CUBIC FEET</u> | <u>TOTAL CORDS</u> | <u>PERCENT ERROR</u>              | <u>MINIMUM</u> | <u>MAXIMUM</u> |
| 54,673                  | 692                | 0.00%                             | 692            | 692            |

VDU VOLUMES

A VDU is a Volume Determination Unit. Volumes and their associated statistics are calculated at the VDU level and summarized to the sale level. There is often a one to one relationship between a VDU and a Payment Unit, but not always, depending on the cruise design. Refer to the VDU TO PAYMENT UNIT table.

|        | VOLUME           |             |               | RANGE IN CORDS |         |
|--------|------------------|-------------|---------------|----------------|---------|
| VDU    | TOTAL CUBIC FEET | TOTAL CORDS | PERCENT ERROR | MINIMUM        | MAXIMUM |
| 24     | 1,936            | 25          | 0.00%         | 25             | 25      |
| 42     | 8,052            | 102         | 0.00%         | 102            | 102     |
| 61     | 13,502           | 171         | 0.00%         | 171            | 171     |
| 93     | 5,541            | 70          | 0.00%         | 70             | 70      |
| 162    | 9,592            | 121         | 0.00%         | 121            | 121     |
| 167    | 14,392           | 182         | 0.00%         | 182            | 182     |
| 171    | 1,659            | 21          | 0.00%         | 21             | 21      |
| TOTAL: | 54,673           | 692         |               | 692            | 692     |

VDU TO PAYMENT UNIT

When a VDU is associated with more than one Payment Unit (PU), the VDU volumes are assigned to the PU based on acres of the VDU within the PU.

| VDU    | VDU ACRES | PU | PU ACRES |
|--------|-----------|----|----------|
|        |           |    |          |
| TOTAL: |           |    |          |

DESCRIPTION OF TIMBER BY PAYMENT UNIT (PU)

| PU     | MARKET GROUP | PRODUCT  | QUANTITY | UNIT  | ACRES | ADVERTISE PRICE |
|--------|--------------|----------|----------|-------|-------|-----------------|
| 1      | Red Pine     | Pulpwood | 70       | Cords | 10.1  | \$1,596.00      |
| 2      | Red Pine     | Pulpwood | 292      | Cords | 41.9  | \$6,657.60      |
| 3      | Red Pine     | Pulpwood | 182      | Cords | 26.1  | \$4,149.60      |
| 4      | Red Pine     | Pulpwood | 123      | Cords | 17.6  | \$2,804.40      |
| 5      | Red Pine     | Pulpwood | 25       | Cords | 3.5   | \$570.00        |
| TOTAL: |              |          | 692      | Cords |       |                 |

## **Sale Specific Conditions & Requirements**

**Sale Name: Ice-y Hot Pine**

**Sale Number: 53-018-25 Seq#: 1**

### **1 - Sale Area**

#### **1.2 - Boundaries**

##### **1.2.1 - Painted Boundaries (9/19)**

The sale boundary is marked and identified by blue, red, and yellow paint. Exterior sale boundary lines against private property are marked with blue paint. Exterior sale boundary lines against state are marked with red paint, with the exception being the north boundary lines of Payment Units 1 and 5 which are marked with yellow paint. The painted boundary line trees are not Included Timber and are to be protected.

### **2 - Timber Specifications**

#### **2.1 - Included Timber**

##### **2.1.1 - Clearcut Unit(s) with Unmerchantable Trees (6/14)**

Within Payment Unit(s) 3, cut all trees that are two (2) inches or more at DBH, except do not cut white pine or trees marked with green paint.

##### **2.1.2 - Clearcut Unit(s) w/o Unmerchantable Trees (8/11)**

Within Payment Unit(s) 1, cut all red pine trees which meet minimum piece specifications in 2.2 Utilization, except do not cut any red pine marked with green paint. Do not cut any other species.

##### **2.1.4 - Designated Timber Unit(s) (6/17)**

Within Payment Unit(s) 2, 4 and 5, red pine trees that have main boles which have broken or those that have fallen over and are on the ground are designated for cutting. Topwood that is on the ground from broken red pine may be utilized. Red pine trees that are bent more than 45 degrees from vertical may also be cut. Do not cut any other species.

##### **2.1.11 - Description of Timber Note (2/04)**

Note that this is an ice storm salvage sale. All Payment Units will be scaled by the Sale Administrator. Prices for individual species if present within the Sale Area are as follows:

-Mixed Hardwood \$14.00/cord

-Mixed Aspen \$16.50/cord

Chipping of Payment Unit #3 will not be required but is encouraged. If the sale is chipped, the Purchaser must provide electronic confirmation of scale tickets at a minimum of twice per week. To convert red pine chip weight to cords, we will use a conversion of 1 cord = 1.9 tons or 1 cord = 3,800 pounds. This is from the USDA's Timber Management Field Book, 2008 Edition table 2.10 Weight Table for Various Woods.

#### **2.2 - Utilization**

##### **2.2.3 - Stump Heights (12/24)**

Stump heights within Payment Unit 3 shall not exceed six (6) inches for all trees.

### **3 - Payments**

#### **3.2 - Scaled Sales**

##### **3.2.1 - Scale Location (2/04)**

Forest products will be placed for measurement at an area identified by the Sale Administrator. In addition, negotiate with the Sale Administrator to determine the frequency of scaling.

### **4 - Transportation**

#### **4.1 - Construction**

##### **4.1.3 - Slash and Earthen Piles (8/04)**

Piles or windrows of earth along roads and landings that have been widened or constructed shall be leveled. Slash from road maintenance or construction, including stumps, shall be dispersed throughout the sale.

#### 4.1.12 - No New Roads (1/12)

No new roads will be permitted in any Payment Unit. All operations are limited to existing roads.

### 4.2 - Maintenance

#### 4.2.4 - Grading (10/16)

For completion of the sale, and if deemed necessary by the Timber Sale Administrator, State Forest roads must be graded. In general, this will require a road grader or bulldozer to shape up the roads after forest products have been hauled off site. The grading equipment to be used must be approved by the Unit Manager or his/her representative.

#### 4.2.5 - Two Wheel Drive Condition (2/04)

All existing trail roads on and adjacent to the Sale Area must be passable by two-wheel drive traffic for the duration of the sale.

### 4.4 - Access

#### 4.4.3 - Access gate (12/08)

The access gate must be locked at the completion of each day unless otherwise approved by the Unit Manager or his/her representative.

## 5 - Operations

### 5.1 - Notification

#### 5.1.1 - Pre-sale Conference (10/16)

A pre-sale conference between the Purchaser and Sale Administrator is required prior to beginning any operations to determine landing and road locations. The Unit Manager or his/her representative must be contacted at least three (3) days in advance to schedule the conference.

### 5.2 - Conduct of Operations

#### 5.2.2 - Hazard Trees/Snags

##### 5.2.2.1 - Den Trees (10/16)

Obvious hollow and/or den trees shall be protected and left standing unless they are a safety hazard.

#### 5.2.38 - No Decking Against Live Trees (2/04)

Cut products may not be decked against unmarked or designated leave trees.

### 5.4 - Soil Protection

#### 5.4.1 - Rutting Restriction, General (7/16)

Operations are to cease immediately if equipment and weather conditions result in rutting of roads and/or skid trails which are 12 inches or greater in depth and 25 feet in length. The Unit Manager or his/her representative may restrict hauling and/or skidding if ruts exceed the specified depth. With the Unit Manager or his/her representative's approval, the Purchaser may return to the area when the risk of rutting has decreased.

### 5.8 - Protection of Endangered Species

#### 5.8.5 - Protection of Raptor Nests (3/13)

All trees with raptor nests will be protected if found during harvesting operations. Notification will be made to the Unit Manager or his/her representative who will notify the Wildlife Biologist so an onsite evaluation and recommendation can be made, if necessary.

## 7 - Other Conditions

### 7.2 - Extensions

#### 7.2.2 - No Extensions (3/09)

There will be no extensions granted on this contract.

#### 7.2.3 - Salvage Extension (6/13)

This is a salvage sale with a short contract length. The sale must be harvested promptly. One (1), twelve (12) month

extension can be applied to one (1) other State Forest Timber Sale Contract owned by the purchaser or owned by one (1) designated sub-contractor of the Purchaser that works this contract. To qualify, the contract expiration date of the contract to be extended must be within twelve (12) months from the issue date of this contract. If this is the first extension on the other State Forest Timber Sale Contract, then the 5% extension fee will be waived. If this is an additional extension, the 10% fee will be reduced to 5%. The salvage extension must be used before this contract is closed-out. This specification does not alleviate the purchaser from any contractual obligations of the extended State Forest Timber Sale Contract. Per General Condition & Requirement 7.2, extensions are at the sole discretion of the DNR.

## 7.5 - Loss

### 7.5.1 - Deteriorating Timber (7/09)

The Sale Area has received damage from an ice storm in late March 2025. The Purchaser should harvest the wood as soon as possible. The Department of Natural Resources is held free of responsibility of any further damage or deterioration due to delay in harvesting.



**TIMBER SALE MAP**

This information provided by authority of Part 525, 1994 PA 451, as amended.

Sale Number

**53-018-25**

Date

**05/29/2025**

Forest Management Unit

County

Mapped By: Rekowski

Scale

Page

Of

Pigeon River Country Mgt Unit

Otsego

Cruised By: Scaled sale

**1:23,914**

**1**

**1**

Township  
32N

Range  
02W /

Section(s) and

Subdivision(s)

Sec. 12 N1/2NE,SWNE; Sec. 6 W1/2NW; Sec. 7 S1/2NW,NESW,S1/2SW,SESE;

**Cover Type**

|                     |                         |                         |                        |
|---------------------|-------------------------|-------------------------|------------------------|
| A = Aspen           | J = Jack Pine           | O = Oak                 | U = Upland Brush       |
| B = Paper Birch     | K = Rock                | P = Lowland Poplar      | UM = Upland Mix Forest |
| C = Cedar           | L = Lowland Brush       | Q = Mixed Swamp Conifer | V = Bog or Marsh       |
| D = Treed Bog       | LM = Lowland Mix Forest | R = Red Pine            | W = White Pine         |
| E = Swamp Hardwoods | M = Maple, Beech, Birch | S = Black Spruce        | X = Non Stocked        |
| F = Spruce/Fir      | MC = Mixed Conifer      | T = Tamarack            | Y = Sand               |
| G = Grass           | MD = Mixed Deciduous    | Z = Water               |                        |
| H = Hemlock         | N = Marsh               |                         |                        |

**Density**

|                             |                        |
|-----------------------------|------------------------|
| 0 = Non Stocked             | 5 = Pole Timber Medium |
| 1 = Seedling Sapling Poor   | 6 = Pole Timber Well   |
| 2 = Seedling Sapling Medium | 7 = Saw Timber Poor    |
| 3 = Seedling Sapling Well   | 8 = Saw Timber Medium  |
| 4 = Pole Timber Poor        | 9 = Saw Timber Well    |

**Payment Unit  
Number**

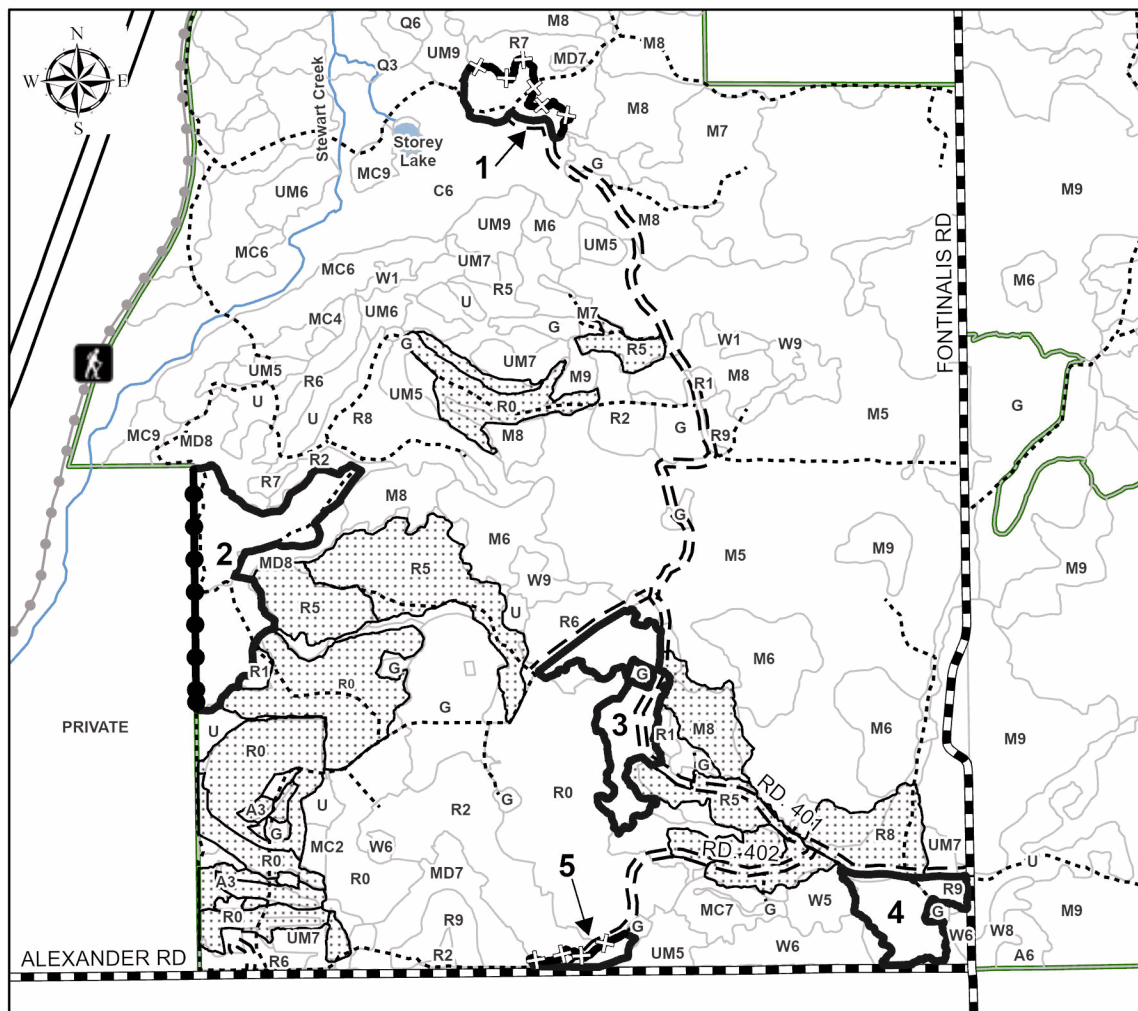
**Acres**

|   |      |
|---|------|
| 1 | 10.1 |
| 2 | 41.9 |
| 3 | 26.1 |
| 4 | 17.6 |
| 5 | 3.5  |

**Ice-y Hot  
Pine**

**99.2 Acres**

0 0.38 0.75 1.5 Miles



**Legend**

- Against State (Red/Pink)
- Against State (Yellow)
- Private Line (Blue)
- Stand Boundary
- Nearby Timber Sale
- Forest Access Route
- Administrative Access Only
- Paved Road
- Government Gravel/Dirt
- Lakes
- Perennial River

**Map Note:**

The boundaries for PU #'s 3-4 are marked with pink paint.  
The northern boundaries of PU #'s 1 and 5 are marked with yellow paint.  
The remaining boundaries against State are marked in red.

Use QR Code to  
open Map in App



Ice Pick Jack (53-017-25)

T33N, R01E, SEC. 26; T33N, R01E, SEC. 35; Cheboygan COUNTY

In response to the notice of sale to be held 9:00 a.m. (local time) on June 11, 2025, I am hereby submitting my sealed bid (firm offer) for the following forest products to be cut. Bids for individual species must be at or above the advertised price. All non-responsive bid forms may be rejected.

| <u>PRODUCTS &amp; SPECIES</u> | <u>ESTIMATED VOLUME*</u> | <u>ADVERTISED PRICE</u> | <u>BID PRICE/UNIT</u> |
|-------------------------------|--------------------------|-------------------------|-----------------------|
| Pulpwood                      |                          |                         |                       |
| Jack Pine                     | 515 Cords                | \$ 5.00/Cord            | \$ _____              |

\*These estimated volumes are final and not subject to adjustment. Prospective bidders are urged to examine this timber and to make their own estimates of quantity and quality.

I understand that any or all bids may be rejected. All bids must be signed and all bid items must be bid or the bid form may be rejected. I also understand that consideration and awarding a contract will be based upon my past performance and ability to complete the contract based upon equipment and staffing subject to my control.

FEDERAL ID: \_\_\_\_-\_\_\_\_-\_\_\_\_ or SOCIAL SECURITY NUMBER: \_\_\_\_-\_\_\_\_-\_\_\_\_

Company or individual bidding: \_\_\_\_\_

Company representative's name: \_\_\_\_\_

Address: \_\_\_\_\_

City: \_\_\_\_\_ State: \_\_\_\_\_ Zip: \_\_\_\_\_

IF AVAILABLE, PLEASE PLACE THE PERSONALIZED LABEL FROM YOUR PROSPECTUS IN THE ABOVE BOX.

Individual or company representative's signature: \_\_\_\_\_ Date: \_\_\_\_\_

Phone number : \_\_\_\_\_ Email (optional): \_\_\_\_\_

**THE WINNING BIDDER MUST COMPLETE THE VERIFICATION OF WORKER'S DISABILITY COMPENSATION ACT  
COMPLIANCE (ON REVERSE SIDE IF DOUBLE SIDED) WITHIN 21 DAYS OF SALE AWARD DATE**



## TIMBER SALE VERIFICATION OF WORKER'S DISABILITY COMPENSATION ACT COMPLIANCE

As required by Act 317, P.A. 1969 (Worker's Compensation) and  
Part 5 of Act 451 of 1994, as amended.

### FOR DEPARTMENT USE ONLY

Sale Number (XX - XXX - XX - XX)

Forest Management Unit:

### VERIFICATION OF WORKER'S DISABILITY COMPENSATION ACT COMPLIANCE

- This verification must be completed and submitted within 21 days of contract award and prior to the issuance of the timber sale contract.
- In addition, if boxes 2B or 2C are checked, then Notice of Exclusion or Certificate of Insurance must be submitted within twenty-one (21) days of the contract award and prior to the issuance of the timber sale contract.
- All information must be typed or printed except for written signatures.

Please Check Appropriate Categories:

1. My business is organized as (you **must** check one of the boxes below):
  - A. ☐ Sole Proprietorship (individual)
  - B. ☐ Partnership
  - C. ☐ Corporation
2. You **must** check one of the boxes below:
  - A. ☐ I certify my business is a sole proprietorship and it has no employees but the sole proprietor. I am not subject to the Worker's Compensation Laws.
  - B. ☐ I certify my business has satisfied its obligation to the Worker's Compensation Act through the use of an approved Notice of Exclusion (BWC-337, Rev. 5/96). I will provide a copy of the Notice of Exclusion within 21 days of the contract award. (For questions or a copy of the BWC-337, please call the Worker's Compensation Bureau at 517-322-1195).
  - C. ☐ I certify my business has a Worker's Compensation Policy. I will provide an original Certificate of Insurance within twenty-one (21) days of the contract award.
3. If you have checked item 2(A) or 2(B), you **must** indicate the number of **both** full-time and part-time employees, other than yourself, including family members and active partners (if none, you must enter "0").

\_\_\_\_\_ Full-time Employees

\_\_\_\_\_ Part-time Employees

|                  |       |                                     |
|------------------|-------|-------------------------------------|
| Name of Business |       | Federal ID (or) Social Security No. |
| Address          |       | Telephone<br>(       )              |
| City             | State | ZIP                                 |

*I hereby certify that the above information is true and correct. I agree to notify the Michigan DNR of any changes that occur in factors affecting my coverage during any of my present and future operations.*

\_\_\_\_\_  
Signature of Owner or Authorized Representative

\_\_\_\_\_  
Title

\_\_\_\_\_  
Date

Please complete the "SEALED BID" information on the next page

Ice Big Pine (53-013-25)

T32N, R01W, SEC. 16; T32N, R01W, SEC. 17; T32N, R01W, SEC. 20; T32N,

In response to the notice of sale to be held 9:00 a.m. (local time) on June 11, 2025, I am hereby submitting my sealed bid (firm offer) for the following forest products to be cut. Bids for individual species must be at or above the advertised price. All non-responsive bid forms may be rejected.

| <u>PRODUCTS &amp; SPECIES</u> | <u>ESTIMATED VOLUME*</u> | <u>ADVERTISED PRICE</u> | <u>BID PRICE/UNIT</u> |
|-------------------------------|--------------------------|-------------------------|-----------------------|
| Pulpwood                      |                          |                         |                       |
| Red Pine                      | 1,514 Cords              | \$ 9.75/Cord            | \$ _____              |

\*These estimated volumes are final and not subject to adjustment. Prospective bidders are urged to examine this timber and to make their own estimates of quantity and quality.

I understand that any or all bids may be rejected. All bids must be signed and all bid items must be bid or the bid form may be rejected. I also understand that consideration and awarding a contract will be based upon my past performance and ability to complete the contract based upon equipment and staffing subject to my control.

FEDERAL ID: \_\_\_\_-\_\_\_\_-\_\_\_\_ or SOCIAL SECURITY NUMBER: \_\_\_\_-\_\_\_\_-\_\_\_\_

Company or individual bidding: \_\_\_\_\_

Company representative's name: \_\_\_\_\_

Address: \_\_\_\_\_

City: \_\_\_\_\_ State: \_\_\_\_\_ Zip: \_\_\_\_\_

IF AVAILABLE, PLEASE PLACE THE PERSONALIZED LABEL FROM YOUR PROSPECTUS IN THE ABOVE BOX.

Individual or company representative's signature: \_\_\_\_\_ Date: \_\_\_\_\_

Phone number : \_\_\_\_\_ Email (optional): \_\_\_\_\_

**THE WINNING BIDDER MUST COMPLETE THE VERIFICATION OF WORKER'S DISABILITY COMPENSATION ACT  
COMPLIANCE (ON REVERSE SIDE IF DOUBLE SIDED) WITHIN 21 DAYS OF SALE AWARD DATE**



## TIMBER SALE VERIFICATION OF WORKER'S DISABILITY COMPENSATION ACT COMPLIANCE

As required by Act 317, P.A. 1969 (Worker's Compensation) and  
Part 5 of Act 451 of 1994, as amended.

### FOR DEPARTMENT USE ONLY

Sale Number (XX - XXX - XX - XX)

Forest Management Unit:

### VERIFICATION OF WORKER'S DISABILITY COMPENSATION ACT COMPLIANCE

- This verification must be completed and submitted within 21 days of contract award and prior to the issuance of the timber sale contract.
- In addition, if boxes 2B or 2C are checked, then Notice of Exclusion or Certificate of Insurance must be submitted within twenty-one (21) days of the contract award and prior to the issuance of the timber sale contract.
- All Information must be typed or printed except for written signatures.

Please Check Appropriate Categories:

1. My business is organized as (you **must** check one of the boxes below):
  - A. ☐ Sole Proprietorship (individual)
  - B. ☐ Partnership
  - C. ☐ Corporation
2. You **must** check one of the boxes below:
  - A. ☐ I certify my business is a sole proprietorship and it has no employees but the sole proprietor. I am not subject to the Worker's Compensation Laws.
  - B. ☐ I certify my business has satisfied its obligation to the Worker's Compensation Act through the use of an approved Notice of Exclusion (BWC-337, Rev. 5/96). I will provide a copy of the Notice of Exclusion within 21 days of the contract award. (For questions or a copy of the BWC-337, please call the Worker's Compensation Bureau at 517-322-1195).
  - C. ☐ I certify my business has a Worker's Compensation Policy. I will provide an original Certificate of Insurance within twenty-one (21) days of the contract award.
3. If you have checked item 2(A) or 2(B), you **must** indicate the number of **both** full-time and part-time employees, other than yourself, including family members and active partners (if none, you must enter "0").

\_\_\_\_\_ Full-time Employees

\_\_\_\_\_ Part-time Employees

|                  |       |                                     |
|------------------|-------|-------------------------------------|
| Name of Business |       | Federal ID (or) Social Security No. |
| Address          |       | Telephone<br>(       )              |
| City             | State | ZIP                                 |

*I hereby certify that the above information is true and correct. I agree to notify the Michigan DNR of any changes that occur in factors affecting my coverage during any of my present and future operations.*

\_\_\_\_\_  
Signature of Owner or Authorized Representative

\_\_\_\_\_  
Title

\_\_\_\_\_  
Date

Please complete the "SEALED BID" information on the next page

Ice Osmun Pine (53-014-25)  
T34N, R01W, SEC. 26; Cheboygan COUNTY

In response to the notice of sale to be held 9:00 a.m. (local time) on June 11, 2025, I am hereby submitting my sealed bid (firm offer) for the following forest products to be cut. Bids for individual species must be at or above the advertised price. All non-responsive bid forms may be rejected.

| <u>PRODUCTS &amp; SPECIES</u> | <u>ESTIMATED VOLUME*</u> | <u>ADVERTISED PRICE</u> | <u>BID PRICE/UNIT</u> |
|-------------------------------|--------------------------|-------------------------|-----------------------|
| Pulpwood                      |                          |                         |                       |
| Red Pine                      | 199 Cords                | \$ 9.75/Cord            | \$ _____              |

\*These estimated volumes are final and not subject to adjustment. Prospective bidders are urged to examine this timber and to make their own estimates of quantity and quality.

I understand that any or all bids may be rejected. All bids must be signed and all bid items must be bid or the bid form may be rejected. I also understand that consideration and awarding a contract will be based upon my past performance and ability to complete the contract based upon equipment and staffing subject to my control.

FEDERAL ID: \_\_\_\_-\_\_\_\_-\_\_\_\_ or SOCIAL SECURITY NUMBER: \_\_\_\_-\_\_\_\_-\_\_\_\_

Company or individual bidding: \_\_\_\_\_

Company representative's name: \_\_\_\_\_

Address: \_\_\_\_\_

City: \_\_\_\_\_ State: \_\_\_\_\_ Zip: \_\_\_\_\_

IF AVAILABLE, PLEASE PLACE THE PERSONALIZED LABEL FROM YOUR PROSPECTUS IN THE ABOVE BOX.

Individual or company representative's signature: \_\_\_\_\_ Date: \_\_\_\_\_

Phone number : \_\_\_\_\_ Email (optional): \_\_\_\_\_

**THE WINNING BIDDER MUST COMPLETE THE VERIFICATION OF WORKER'S DISABILITY COMPENSATION ACT  
COMPLIANCE (ON REVERSE SIDE IF DOUBLE SIDED) WITHIN 21 DAYS OF SALE AWARD DATE**



## TIMBER SALE VERIFICATION OF WORKER'S DISABILITY COMPENSATION ACT COMPLIANCE

As required by Act 317, P.A. 1969 (Worker's Compensation) and  
Part 5 of Act 451 of 1994, as amended.

### FOR DEPARTMENT USE ONLY

Sale Number (XX - XXX - XX - XX)

Forest Management Unit:

### VERIFICATION OF WORKER'S DISABILITY COMPENSATION ACT COMPLIANCE

- This verification must be completed and submitted within 21 days of contract award and prior to the issuance of the timber sale contract.
- In addition, if boxes 2B or 2C are checked, then Notice of Exclusion or Certificate of Insurance must be submitted within twenty-one (21) days of the contract award and prior to the issuance of the timber sale contract.
- All Information must be typed or printed except for written signatures.

Please Check Appropriate Categories:

1. My business is organized as (you **must** check one of the boxes below):
  - A. ☐ Sole Proprietorship (individual)
  - B. ☐ Partnership
  - C. ☐ Corporation
2. You **must** check one of the boxes below:
  - A. ☐ I certify my business is a sole proprietorship and it has no employees but the sole proprietor. I am not subject to the Worker's Compensation Laws.
  - B. ☐ I certify my business has satisfied its obligation to the Worker's Compensation Act through the use of an approved Notice of Exclusion (BWC-337, Rev. 5/96). I will provide a copy of the Notice of Exclusion within 21 days of the contract award. (For questions or a copy of the BWC-337, please call the Worker's Compensation Bureau at 517-322-1195).
  - C. ☐ I certify my business has a Worker's Compensation Policy. I will provide an original Certificate of Insurance within twenty-one (21) days of the contract award.
3. If you have checked item 2(A) or 2(B), you **must** indicate the number of **both** full-time and part-time employees, other than yourself, including family members and active partners (if none, you must enter "0").

\_\_\_\_\_ Full-time Employees

\_\_\_\_\_ Part-time Employees

|                  |       |                                     |
|------------------|-------|-------------------------------------|
| Name of Business |       | Federal ID (or) Social Security No. |
| Address          |       | Telephone<br>(       )              |
| City             | State | ZIP                                 |

*I hereby certify that the above information is true and correct. I agree to notify the Michigan DNR of any changes that occur in factors affecting my coverage during any of my present and future operations.*

\_\_\_\_\_  
Signature of Owner or Authorized Representative

\_\_\_\_\_  
Title

\_\_\_\_\_  
Date

Please complete the "SEALED BID" information on the next page

Ice-y Hot Pine (53-018-25)

T32N, R02W, SEC. 6; T32N, R02W, SEC. 7; T32N, R03W, SEC. 12; Otsego

In response to the notice of sale to be held 9:00 a.m. (local time) on June 11, 2025, I am hereby submitting my sealed bid (firm offer) for the following forest products to be cut. Bids for individual species must be at or above the advertised price. All non-responsive bid forms may be rejected.

| <u>PRODUCTS &amp; SPECIES</u> | <u>ESTIMATED VOLUME*</u> | <u>ADVERTISED PRICE</u> | <u>BID PRICE/UNIT</u> |
|-------------------------------|--------------------------|-------------------------|-----------------------|
| Pulpwood                      |                          |                         |                       |
| Red Pine                      | 692 Cords                | \$ 22.80/Cord           | \$ _____              |

\*These estimated volumes are final and not subject to adjustment. Prospective bidders are urged to examine this timber and to make their own estimates of quantity and quality.

I understand that any or all bids may be rejected. All bids must be signed and all bid items must be bid or the bid form may be rejected. I also understand that consideration and awarding a contract will be based upon my past performance and ability to complete the contract based upon equipment and staffing subject to my control.

FEDERAL ID: \_\_\_\_-\_\_\_\_-\_\_\_\_ or SOCIAL SECURITY NUMBER: \_\_\_\_-\_\_\_\_-\_\_\_\_

Company or individual bidding: \_\_\_\_\_

Company representative's name: \_\_\_\_\_

Address: \_\_\_\_\_

City: \_\_\_\_\_ State: \_\_\_\_\_ Zip: \_\_\_\_\_

IF AVAILABLE, PLEASE PLACE THE PERSONALIZED LABEL FROM YOUR PROSPECTUS IN THE ABOVE BOX.

Individual or company representative's signature: \_\_\_\_\_ Date: \_\_\_\_\_

Phone number : \_\_\_\_\_ Email (optional): \_\_\_\_\_

**THE WINNING BIDDER MUST COMPLETE THE VERIFICATION OF WORKER'S DISABILITY COMPENSATION ACT  
COMPLIANCE (ON REVERSE SIDE IF DOUBLE SIDED) WITHIN 21 DAYS OF SALE AWARD DATE**



**TIMBER SALE**  
**VERIFICATION OF WORKER'S DISABILITY**  
**COMPENSATION ACT COMPLIANCE**

*As required by Act 317, P.A. 1969 (Worker's Compensation) and  
Part 5 of Act 451 of 1994, as amended.*

**FOR DEPARTMENT USE ONLY**

Sale Number (XX – XXX – XX – XX)

Forest Management Unit:

**VERIFICATION OF WORKER'S DISABILITY COMPENSATION ACT COMPLIANCE**

- This verification must be completed and submitted within 21 days of contract award and prior to the issuance of the timber sale contract.
- In addition, if boxes 2B or 2C are checked, then Notice of Exclusion or Certificate of Insurance must be submitted within twenty-one (21) days of the contract award and prior to the issuance of the timber sale contract.
- All Information must be typed or printed except for written signatures.

Please Check Appropriate Categories:

1. My business is organized as (you **must** check one of the boxes below):
  - A. ☐ Sole Proprietorship (individual)
  - B. ☐ Partnership
  - C. ☐ Corporation
2. You **must** check one of the boxes below:
  - A. ☐ I certify my business is a sole proprietorship and it has no employees but the sole proprietor. I am not subject to the Worker's Compensation Laws.
  - B. ☐ I certify my business has satisfied its obligation to the Worker's Compensation Act through the use of an approved Notice of Exclusion (BWC-337, Rev. 5/96). I will provide a copy of the Notice of Exclusion within 21 days of the contract award. (For questions or a copy of the BWC-337, please call the Worker's Compensation Bureau at 517-322-1195).
  - C. ☐ I certify my business has a Worker's Compensation Policy. I will provide an original Certificate of Insurance within twenty-one (21) days of the contract award.
3. If you have checked item 2(A) or 2(B), you **must** indicate the number of **both** full-time and part-time employees, other than yourself, including family members and active partners (if none, you must enter "0").

\_\_\_\_\_ Full-time Employees

\_\_\_\_\_ Part-time Employees

|                  |       |                                     |
|------------------|-------|-------------------------------------|
| Name of Business |       | Federal ID (or) Social Security No. |
| Address          |       | Telephone<br>(       )              |
| City             | State | ZIP                                 |

*I hereby certify that the above information is true and correct. I agree to notify the Michigan DNR of any changes that occur in factors affecting my coverage during any of my present and future operations.*

\_\_\_\_\_  
Signature of Owner or Authorized Representative

\_\_\_\_\_  
Title

\_\_\_\_\_  
Date

**Please complete the "SEALED BID" information on the next page**