



**DEPARTMENT OF NATURAL RESOURCES  
STATE OF MICHIGAN  
TIMBER SALE PROSPECTUS #7685**

SCHEDULED SALE DATE AND TIME: **9:00 a.m. (local time) on July 9, 2025.**

LOCATION: **ROSCOMMON MGMT UNIT, PO BOX 218, ROSCOMMON, MI 48653.**

PROSPECTUS NOTE: Changes made to accommodate decking and loading. Prices drastically reduced to encourage purchase.

The bidder is advised to inspect the sale area and review the location, estimated volumes, operating costs and contract terms of proposed sales. Please be aware that some landowners may request 60 days or more notice for access across their land.

Notice is hereby given that bids will be received by the Unit Manager, ROSCOMMON MANAGEMENT UNIT, for certain timber on the following described lands:

Powerline ROW (71-003-25) / T21N, R03W, SEC. 2 , N1/2NW,NWNE.

T21N, R03W, SEC. 3 , N1/2NW,N1/2NE.

T21N, R03W, SEC. 4 , NENW,N1/2NE.

T22N, R03W, SEC. 32, NWNW,S1/2NW,E1/2SW,SWSE.

Roscommon County, Advertised Price \$981.60, 41.2 Acres, Red Pine, White Pine.

SALE NOTE: 5.2.31 Landing Location- Contract language was added to allow flexibility in landing areas and the decking of forest products.

This is a timber sale of roughly 100 feet in width along county roads to clear the timber in advance of a powerline project. There is a relatively short time limit on this contract with no extensions granted.

A recreation site such as a trail, pathway, or campground is within the sale area or the vicinity. Certain restrictions/specifications may be applicable including time restrictions.

## BID INSTRUCTIONS (VER. 10/10/2022):

### 1. Scheduled Bid Location, Date, and Time (2/11)

Bids must be received by the Unit Manager, ROSCOMMON OFFICE, PO BOX 218, ROSCOMMON, MI 48653, no later than 9:00 a.m. (local time) on July 9, 2025. For further information concerning this sale, contact Jason Lewicki at 989-745-5870 extension .

### 2. Bidder's Qualifications (10/22)

If all or part of a timber sale was prepared by a private contractor, the contractor and that contractor's company are not permitted to bid on the timber sale. A person must be 18 years of age or older to purchase timber. Permanent employees of the Department of Natural Resources or members of their immediate household may not bid. Former employees, in the permanent or seasonal class, may not bid until 3 months after the last day of active duty. Bids will not be accepted from individuals or companies appearing on the DNR/FRD No-Bid List. This list contains the names of purchasers who previously failed to execute a contract within 21-days or who have a history of poor performance.

### 3. Preparation of Sealed Bids (5/16)

Bid Forms may be completed online thru Michigan DNR Timber Sale Online Bidding (OLB) at [www.michigan.gov/timberbidding](http://www.michigan.gov/timberbidding) or by completing the hardcopy Bid Form found in the Timber Sale Prospectus . Hardcopy Bid Forms shall be manually signed in ink. Registration in OLB is considered your 'signature' for all bids submitted thru that system. Bid prices must be entered for each species and product in the Bid Price column for all material subject to bidding and all fill-in blanks must be completed. If erasures or other changes appear on the hardcopy Bid Form, each erasure or change must be initialed by the person signing the bid.

### 4. Submission of Sealed Bids (5/16)

Bid forms may be obtained from the Unit Manager or thru OLB. Bids may be submitted hardcopy or thru OLB. All hardcopy bids must be submitted on the bid form and in an envelope clearly identified as described in this section. NOTE: Only one bid form per bid envelope. Sealed bids must be submitted to the Unit office designated in the prospectus and must be submitted at or prior to the time established in the prospectus. The envelope should show on the outside (a) the sale name or number and (b) the date and time of bid opening, as shown in the prospectus. Bids received after the time specified in the sale prospectus are late bids and will be rejected.

It is possible for a bidder to submit multiple bids on a single sale. For example, a bid may be submitted hardcopy and a bid may be submitted thru OLB. Or, two bidders from the same company could both submit bids on the same sale. If this were to happen, the State would accept all bids received and award the contract accordingly. All bidding and contractual requirements would apply to all bids received.

### 5. Public Opening of Sealed Bids (7/16)

If conditions permit, the sealed bids will be publicly opened and posted at the time and place set in the prospectus.

If a bidder, present at a bid opening, has submitted bids on more than one sale, that bidder may withdraw their unopened bid envelopes or announce the withdrawal of their online bid after being declared the successful bidder on one sale.

### 6. Award of Contract (1/11)

Award of the contract will be made to the Bidder whose bid, conforming to the prospectus, is most advantageous to the State of Michigan on the basis of total value at rates bid for the estimated quantities. The State reserves the right to reject any bid or waive any minor irregularity in bids received. A written award mailed (or otherwise furnished) to the successful Bidder shall be deemed to result in a binding contract without further action by either party.

### 7. Down Payment (1/11)

The Bidder to whom award is made must make a down payment within 21 days of the sale award. The amount of the down payment will be calculated as shown in the Bond and Payment Schedule of this prospectus. Only cash may be used to meet this requirement.

### 8. Performance Security (1/11)

As guarantee of faithful performance, a cash bond, certificate of deposit, surety bond or irrevocable letter of credit (LOC) is required within 21 days of the sale award. The amount of the performance security is shown in the Bond and

Payment Schedule of this prospectus. If an LOC or surety is used, the coverage must extend for at least 6 months beyond the contract expiration.

#### 9. Worker's Compensation (10/22)

Purchaser shall obtain worker's compensation insurance to cover claims under Michigan's Worker's Disability Compensation Act of 1969 or similar employee benefit act of any other state applicable to an employee. Verification of Worker's Disability Compensation Act Compliance must be completed and submitted within 21 days of contract award and prior to the issuance of the timber sale contract. In addition, if applicable, Notice of Exclusion or Certificate of Insurance must also be submitted.

#### 10. Timber Sale Contract (10/22)

Additional conditions and requirements common to all timber sales are listed on the timber sale contract (R4031) and are available on line at [www.michigan.gov/timber](http://www.michigan.gov/timber). Contact the Unit Manager for additional information or a sample contract. Within 21 days of the date of the award letter, the bidder must sign the contract and provide the required down payment, performance security, and verification of worker's disability compensation. The down payment and performance security shall be in accordance with the provisions of the timber sale contract, in the sums stated in this prospectus. If these actions are not taken, then the Bidder, the Bidder's corporation, and the corporation's principals may not be permitted to bid on State timber sales for a period of 3 months after the first offense, 6 months after the second offense, and 1 year after the third offense. An offense will only be counted against the Bidder for 5 years. In addition, the Bidder certifies that if awarded this contract, the Bidder will complete the timber sale contract in accordance with its terms and any modifications thereof including requirements to purchase, cut, and remove the included timber by the expiration date.

Payment Unit values in the State Forest Timber Sale Contract are calculated based on the advertised value of the Payment Unit as a percentage of the total advertised value of the contract. The advertised value of each Payment Unit is given in the Description of Timber by Payment Unit table on the Timber Sale Information page. For example, if the value of Payment Unit 1 is advertised as \$1,500 and the total Timber Sale value is advertised as \$10,000, the contract price for Payment Unit 1 will be 15% of the total bid price ( $\$1,500/\$10,000 * 100$ ).

#### 11. Disclaimer of Estimates and Bidder's Warranty of Inspection (10/22)

Before submitting this bid, the Bidder is advised and cautioned to inspect the sale area, review the requirements of the sale contract, and take other steps as may be reasonably necessary to ascertain the location, estimated volumes, construction estimates, and operating costs of the proposed sale. Failure to do so will not relieve the Bidder from responsibility for completing the contract.

The Bidder warrants that this bid is submitted solely on the basis of the Bidder's examination and inspection of the quality and quantity of the timber offered for sale and the Bidder's opinion of the value thereof and the costs of recovery. No reliance should be placed on the State of Michigan's estimates of timber quality, quantity or costs of recovery. Bidder further acknowledges that the State of Michigan: (i) expressly disclaims any warranty of fitness of timber for any purpose; (ii) offers this timber as is without any warranty of quality (merchantability) or quantity and (iii) expressly disclaims any warranty as to the quantity or quality of timber sold.

#### 12. Certification and Chain-of-Custody (10/22)

Unless otherwise indicated in the contract under section 7 – Other Conditions of the Sale Specific Conditions & Requirements, the area encompassed by this timber sale is certified to the standards of the Forest Stewardship Council (FSC) - Certificate #SCS-FM/COC-00090N and the Sustainable Forestry Initiative (SFI) - Certificate #NSF-SFIS-5Y031-SF5. Forest products from this sale may be delivered to the mill as "FSC 100% and / or SFI certified" as long as the contractor hauling the forest products is chain-of-custody (COC) certified or covered under a COC certificate from the destination mill. The purchaser is responsible for maintaining COC after leaving the sale area.

#### 13. Good Neighbor Authority (GNA) Requirements (10/22)

If the name of this timber sales contains the acronym GNA, it is authorized by the Good Neighbor Authority (GNA) and covered by various agreements between the U.S. Forest Service and the State. The timber sale occurs on federal land and the following conditions apply:

GNA contracts on US Forest Service land will not be awarded to purchasers on the Federal list of excluded parties. The System for Award Management (SAM) will be checked for active excluded parties prior to award of contract. In

addition, the Bidder to whom award is made must complete an Assurance Regarding Felony Conviction or Tax Delinquent Status for Corporate Applicants (AD-3031).

14. Good Neighbor Authority (GNA) Requirements, con't (10/22)

Bidder certifies, by signing this bid form, that to the best of Bidder's knowledge that the following representations are accurate and complete.

- a. That the Bidder and its principals are not presently debarred, suspended, proposed for debarment, declared ineligible, or voluntary excluded from timber sales (covered transactions) by any Federal department or agency.
- b. That the Bidder and its principals have not within a 3-year period preceding this bid been convicted of or had a civil judgment rendered against them for commission of fraud or a criminal offense in connection with obtaining , attempting to obtain, or performing a public (Federal, State, or local) transaction or contract under a public transaction; violation of Federal or State antitrust statutes or commission of embezzlement, theft, forgery, bribery, falsification or destruction of records, making false statements, or receiving stolen property.
- c. That the Bidder and its principals are not presently indicted for or otherwise criminally or civilly charged by a governmental entity (Federal, State, or local) with commission of any of the offenses enumerated in paragraph b of this certification.
- d. That the Bidder and its principals have not within a 3-year period preceding this bid had one or more public transactions (Federal, State, or local) terminated for breach or default of a timber or forest product contract.

Bidders that cannot certify this requirement, in whole or in part, shall submit an explanation with their bid.

Scott Bowen  
Director

## TIMBER SALE INFORMATION

### Powerline ROW (71-003-25)

T21N, R03W, SEC. 2; T21N, R03W, SEC. 3; T21N, R03W, SEC. 4; T22N, R03W, SEC. 32.

Roscommon County (Advertised Price \$981.60)

**SALE NOTE:** 5.2.31 Landing Location- Contract language was added to allow flexibility in landing areas and the decking of forest products.

This is a timber sale of roughly 100 feet in width along county roads to clear the timber in advance of a powerline project. There is a relatively short time limit on this contract with no extensions granted.

A recreation site such as a trail, pathway, or campground is within the sale area or the vicinity. Certain restrictions/specifications may be applicable including time restrictions.

A timber sale contract for this lump sum, sealed bid timber sale will be awarded to the responsible bidder offering the highest sealed bid price. All units of volume listed below were estimated using the Inventory Manager computer program and the new Michigan taper model. Bids must be at or above the following advertised price for each product and species:

<u>PRODUCTS &amp; SPECIES</u>	<u>ESTIMATED UNITS*</u>		<u>ADVERTISED PRICE</u>	
Sawtimber				
Black/Red (Hybrid) Oak	18.1	MBF	\$	2.00 / MBF
Red Pine	209.5	MBF	\$	2.00 / MBF
White Oak	4.4	MBF	\$	2.00 / MBF
White Pine	35.3	MBF	\$	2.00 / MBF
Pulpwood				
Balsam Fir	18	Cords	\$	1.00 / Cord
Jack Pine	56	Cords	\$	1.00 / Cord
Mixed Aspen	111	Cords	\$	1.00 / Cord
Mixed Hardwood	16	Cords	\$	1.00 / Cord
Mixed Oak	51	Cords	\$	1.00 / Cord
Red Pine	136	Cords	\$	1.00 / Cord
White Pine	59	Cords	\$	1.00 / Cord

\* The total volume is statistically estimated within plus (+) or minus (-) 12.54 percent. There are an estimated 1,065 cords on this timber sale, plus or minus 134 cords at the 95% confidence level. The estimated units are final and not subject to adjustment. Prospective bidders are urged to examine this timber and to make their own estimates of quantity and quality.

### **BOND AND PAYMENT SCHEDULE:**

1. A bond in the amount of \$100.00 to insure faithful performance of the conditions of the contract will be deposited by the successful bidder within 21 days of the sale award.

2. Cutting in any sale or unit without the required advance payment would be considered a trespass.

3. Total payment must be paid in advance or according to the following schedule:

(a) Ten percent (10%) of the sale value must be paid within 21 days of the sale award.

(b) The 10% down payment will be credited towards the first unit cut.

(c) Payment for each of the following units must be made before cutting begins in that unit:

<u>PAYMENT UNIT NUMBER</u>	<u>PERCENT OF TOTAL SALE VALUE</u>
01	17.7%
02	16.6%
03	26.7%
04	39.0%

4. If no cutting takes place, the 10% down payment will not be refunded.

5. Operations on the contract issued will terminate on 10/01/2025.

### **SALE STATISTICS**

Volumes were calculated in cubic feet using the Michigan taper model. Cubic foot volume includes all wood inside bark for the product indicated. For display purposes, cubic feet were converted to cords and MBF using a simple conversion factor, e.g. 79 cubic feet per cord and 185 cubic feet per MBF. The cubic foot volumes are precise; the cords and MBF volumes are not. Cubic foot volume cannot be directly converted to cords or boards with precision.

SALE VOLUMES

The total estimated sale volume may not equal the sum of the species/products due to the nature of statistical calculations associated with double sampling methodology.

VOLUME			STATISTICAL RANGE IN CORDS	
TOTAL CUBIC FEET	TOTAL CORDS	PERCENT ERROR	MINIMUM	MAXIMUM
84,158	1,065	12.54%	932	1,199

VDU VOLUMES

A VDU is a Volume Determination Unit. Volumes and their associated statistics are calculated at the VDU level and summarized to the sale level. There is often a one to one relationship between a VDU and a Payment Unit, but not always, depending on the cruise design. Refer to the VDU TO PAYMENT UNIT table.

	VOLUME			RANGE IN CORDS	
VDU	TOTAL CUBIC FEET	TOTAL CORDS	PERCENT ERROR	MINIMUM	MAXIMUM
26	4,270	54	39.36%	33	75
33	2,507	32	71.11%	9	54
38	3,009	38	97.49%	1	75
61	1,745	22	98.27%	0	44
64	736	9	37.11%	6	13
69	1,511	19	76.14%	5	34
76	661	8	160.89%	0	22
79	775	10	107.00%	0	20
92	1,716	22	56.96%	9	34
99	10,577	134	32.82%	90	178
106	1,753	22	86.96%	3	41
128	19,776	250	17.42%	207	294
146	3,257	41	66.96%	14	69
147	512	6	137.91%	0	15
148	7,742	98	69.96%	29	167
149	15,176	192	40.97%	113	271
206	2,576	33	47.87%	17	48
906	1,851	23	14.58%	20	27
969	1,268	16	76.33%	4	28
976	2,742	35	52.36%	17	53
TOTAL:	84,158	1,065		576	1,562

VDU TO PAYMENT UNIT

When a VDU is associated with more than one Payment Unit (PU), the VDU volumes are assigned to the PU based on acres of the VDU within the PU.

VDU	VDU ACRES	PU	PU ACRES
TOTAL:			

PU	MARKET GROUP	PRODUCT	QUANTITY	UNIT	ACRES	ADVERTISE PRICE
1	Black/Red (Hybrid /Red (Hybrid) Oak	Sawtimber	3.3	MBF	3.8	\$174.20
	Red Pine		3.3	MBF		
	White Oak		24.2	MBF		
	White Pine		2.8	MBF		
	Mixed Aspen		20.3	MBF		
	B. T. Aspen	Pulpwood	12	Cords		
	B. T. Aspen	Sawtimber	3.8	MBF		
	Mixed Oak	Pulpwood	4	Cords		
	/Red (Hybrid) Oak		8	Cords		
	White Oak		5	Cords		
	Red Pine		3	Cords		
	White Pine		31	Cords		
			22	Cords		
	2	Black/Red (Hybrid /Red (Hybrid) Oak	Sawtimber	1.0		
Red Pine			1.0	MBF		
White Pine			43.7	MBF		
Balsam Fir			3.7	MBF		
Balsam Fir		Pulpwood	4	Cords		
Jack Pine			4	Cords		
Jack Pine			1	Cords		
Jack Pine			1	Cords		
Mixed Aspen			26	Cords		
Quaking Aspen		Sawtimber	1.5	MBF		
B. T. Aspen		Pulpwood	3	Cords		
Quaking Aspen			20	Cords		
Mixed Hardwood			1	Cords		
Black Cherry			1	Cords		
Mixed Oak			4	Cords		
/Red (Hybrid) Oak			4	Cords		
Red Pine			25	Cords		
White Pine			5	Cords		
3	Black/Red (Hybrid /Red (Hybrid) Oak	Sawtimber	3.0	MBF	12.7	\$262.00
	Red Oak		2.1	MBF		
	Red Pine		0.9	MBF		
	White Oak		46.4	MBF		
	White Pine		1.6	MBF		
	White Pine		8.0	MBF		
	Balsam Fir	Pulpwood	13	Cords		
	Balsam Fir	Sawtimber	0.3	MBF		
	Balsam Fir	Pulpwood	12	Cords		
	Jack Pine		38	Cords		
	Jack Pine	Sawtimber	1.8	MBF		
	Scotch Pine		0.3	MBF		
	Jack Pine	Pulpwood	28	Cords		
	Scotch Pine		5	Cords		
	Mixed Aspen		25	Cords		
	B. T. Aspen	Sawtimber	1.8	MBF		
	B. T. Aspen	Pulpwood	21	Cords		
	Mixed Hardwood		7	Cords		
	Black Cherry		3	Cords		
	Red Maple		4	Cords		
	Mixed Oak		15	Cords		
	/Red (Hybrid) Oak		7	Cords		
	Red Oak		1	Cords		
	White Oak		7	Cords		
	Red Pine		20	Cords		

**DESCRIPTION OF TIMBER BY PAYMENT UNIT (PU), CON'T**

PU	MARKET GROUP	PRODUCT	QUANTITY	UNIT	ACRES	ADVERTISE PRICE
3 con't	White Pine	Pulpwood	26	Cords		
4	Black/Red (Hybrid /Red (Hybrid) Oak	Sawtimber	10.8	MBF	17.1	\$382.60
	Red Pine		10.8	MBF		
	Red Pine		95.2	MBF		
	White Pine		3.3	MBF		
	Balsam Fir	Pulpwood	1	Cords		
	Balsam Fir		1	Cords		
	Jack Pine		17	Cords		
	Jack Pine	Sawtimber	0.2	MBF		
	Jack Pine	Pulpwood	17	Cords		
	Mixed Aspen		48	Cords		
	B. T. Aspen	Sawtimber	0.6	MBF		
	B. T. Aspen	Pulpwood	47	Cords		
	Mixed Hardwood		8	Cords		
	Red Maple	Sawtimber	0.9	MBF		
	Black Cherry	Pulpwood	2	Cords		
	Red Maple		4	Cords		
	Mixed Oak		24	Cords		
	/Red (Hybrid) Oak		21	Cords		
	White Oak		3	Cords		
	Red Pine		60	Cords		
	White Pine		6	Cords		
TOTAL:			267.3	MBF		
TOTAL:			447	Cords		



## Sale Specific Conditions & Requirements

**Sale Name: Powerline ROW**

**Sale Number: 71-003-25 Seq#: 3**

### 1 - Sale Area

#### 1.2 - Boundaries

##### 1.2.1 - Painted Boundaries (9/19)

The sale boundary and Payment Unit boundaries are marked and identified by red paint. Exterior sale boundary lines against state are marked in red paint. The painted boundary line trees are not Included Timber and are to be protected.

### 2 - Timber Specifications

#### 2.1 - Included Timber

##### 2.1.1 - Clearcut Unit(s) with Unmerchantable Trees (6/14)

Within Payment Unit(s) 1-4, cut all trees that are one (1) inch or more at DBH.

### 3 - Payments

#### 3.3 - Pre-measured Sales

##### 3.3.4 - Dividing Payment Units (7/14)

Payment Unit(s) may be divided at the request of the Purchaser and upon approval of the Unit Manager. Dividing Payment Units is a contract modification which requires a Timber Sale Contract Amendment. There will be only one division per Payment Unit.

### 4 - Transportation

#### 4.1 - Construction

##### 4.1.6 - Road Construction (4/24)

Construction of new roads or improvements of existing roads shall be done in such a way as to minimize the environmental and visual impacts. Merchantable trees shall be cut and utilized unless otherwise directed. Non-merchantable trees shall be severed and laid flat on the ground. Slash shall be scattered, not left in windrows, and kept a minimum of 10 feet back from the road edge. Stumps shall be set upright, not left on edge, and be moved at least 10 feet away from the road edge. Disturbed soil shall be feathered into the woods and not left in berms or windrows.

##### 4.1.7 - Road Closure (10/11)

All new roads built into the sale must be blocked to vehicle traffic upon completion of the sale. Overgrown roads that are reopened shall be considered new roads. In general, this will require constructing a four (4') foot high berm of stumps and logs covered with earth. These roads must be rendered impassable to cars and trucks. Contact the Sale Administrator for specific details of design and placement.

### 5 - Operations

#### 5.1 - Notification

##### 5.1.1 - Pre-sale Conference (10/16)

A pre-sale conference between the Purchaser and Sale Administrator is required prior to beginning any operations to determine landing and road locations. The Unit Manager or his/her representative must be contacted in advance to schedule the conference.

##### 5.1.4 - Post-Sale Conference (10/16)

A post-sale conference on site between the Purchaser and sale administrator is required 5 days prior to the completion of active logging operations to determine clean-up and repair of landings, road edges, and the fulfillment of other contract specifications.

#### 5.2 - Conduct of Operations

##### 5.2.3 - Operating Restrictions

#### 5.2.3.4 - Oak Wilt Restriction, No Exceptions (1/18)

Within Payment Unit 1, cutting, skidding, hauling within the sale and brushing of access roads to the sale are not permitted during the period of April 15 to July 15. No exceptions will be granted. This is necessary to reduce the spread of oak wilt.

#### 5.2.31 - Landing Locations (9/13)

Landings may be created in areas outside the sale boundary to help mitigate trucking and hauling issues presented by the shape of the timber sale. These landings must be discussed with and approved by the sale administrator. Decking within the right of way of county roads may be allowed in certain areas. These areas must be approved by the Roscommon County Road Commission and are the responsibility of the contract holder. Loading of timber products on to trucks while in the county roadway will not be permitted.

#### 5.2.38 - No Decking Against Live Trees (2/04)

Cut products may not be decked against unmarked or designated leave trees.

#### 5.2.39 - ORV Trail/Route Protection (4/18)

There is an ORV trail that is shown on the Timber Sale Map. Trees with yellow ORV markers shall be cut off above the markers and at least five (5) feet above ground. Do not run equipment down the ORV trail or route. Skidding across the trail or route may only occur in locations approved by the Sale Administrator.

## 6 - Safety and Fire Prevention

### 6.2 - Signing

#### 6.2.1 - Road Posting (10/20)

The Purchaser is responsible for posting and maintaining caution signs on Waco Road and Reserve Road prior to beginning operations. The road must be posted at appropriate distances from the Sale Area to warn of logging activity and truck traffic. Signs must be removed when harvest operations are suspended or completed. The Purchaser will provide these signs.

#### 6.2.3 - Recreational Trail Posting (10/20)

The Purchaser is responsible for posting and maintaining caution signs on the ORV trails prior to beginning operations. The trail must be posted at appropriate distances from the Sale Area to warn of logging activity and truck traffic at both ends of the trail. Signs must be removed when harvest operations are suspended or completed. The Purchaser will provide these signs.

## 7 - Other Conditions

### 7.2 - Extensions

#### 7.2.2 - No Extensions (3/09)

There will be no extensions granted on this contract.



**TIMBER SALE MAP**

This information provided by authority of Part 525, 1994 PA 451, as amended.

Sale Number

**71-003-25**

Date

**04/23/2025**

Forest Management Unit

County

Mapped By: Martell and Lewicki

Scale

Page

Of

Roscommon Mgt Unit

Roscommon

Cruised By: Martell and Lewicki

**1:15,840**

**1**

**2**

Township  
21N / 22N

Range  
03W

Section(s) and  
Subdivision(s) NENW,N1/2NE;

Sec. 2 N1/2NW,NWNE; Sec. 3 N1/2NW,N1/2NE; Sec. 32 NWNW,S1/2NW,E1/2SW,SWSE; Sec. 4

**Cover Type**

A = Aspen	J = Jack Pine	O = Oak	U = Upland Brush
B = Paper Birch	K = Rock	P = Lowland Poplar	UM = Upland Mix Forest
C = Cedar	L = Lowland Brush	Q = Mixed Swamp Conifer	V = Bog or Marsh
D = Treed Bog	LM = Lowland Mix Forest	R = Red Pine	W = White Pine
E = Swamp Hardwoods	M = Maple, Beech, Birch	S = Black Spruce	X = Non Stocked
F = Spruce/Fir	MC = Mixed Conifer	T = Tamarack	Y = Sand
G = Grass	MD = Mixed Deciduous		Z = Water
H = Hemlock	N = Marsh		

**Density**

0 = Non Stocked	5 = Pole Timber Medium
1 = Seedling Sapling Poor	6 = Pole Timber Well
2 = Seedling Sapling Medium	7 = Saw Timber Poor
3 = Seedling Sapling Well	8 = Saw Timber Medium
4 = Pole Timber Poor	9 = Saw Timber Well

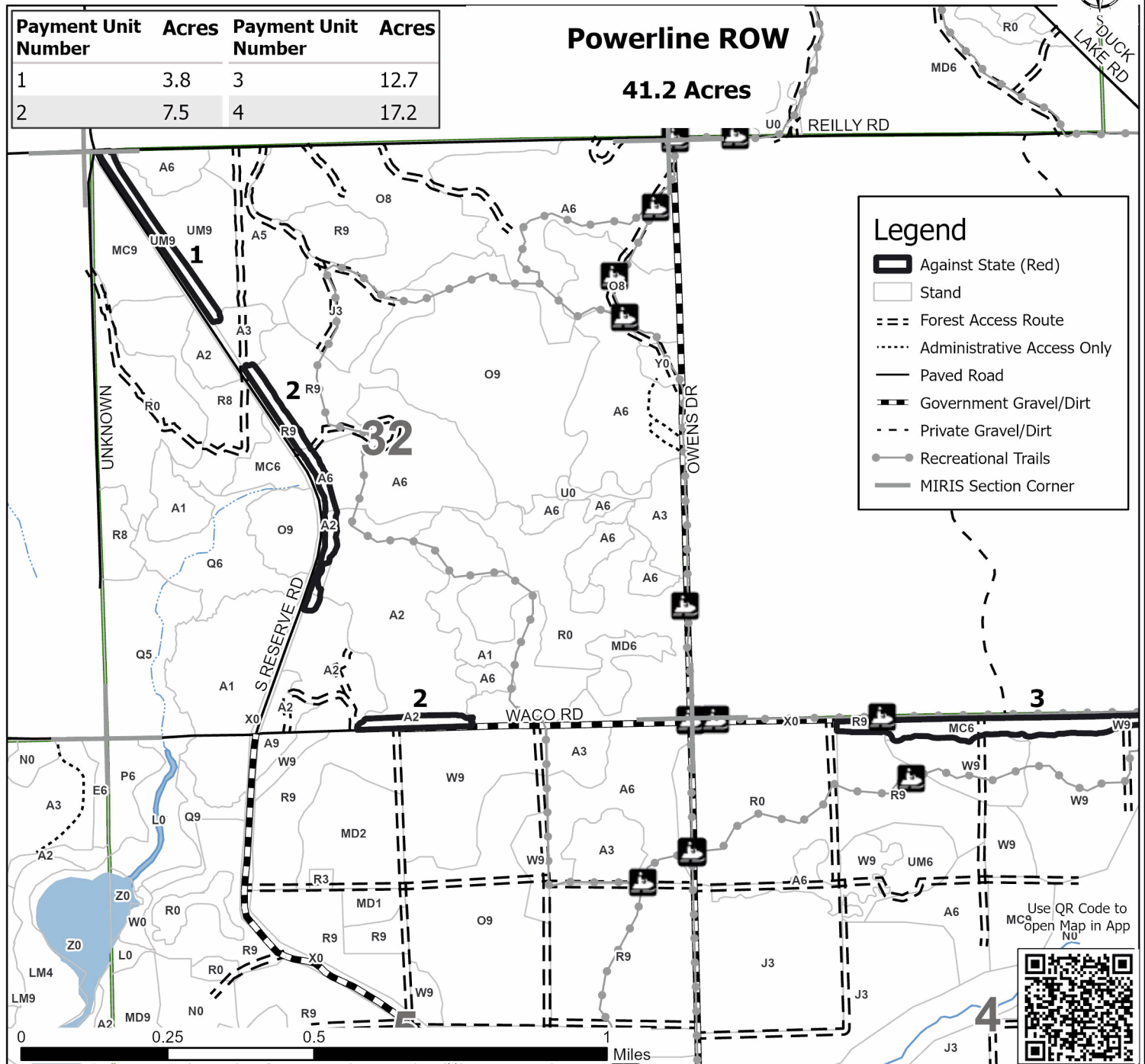
Payment Unit Number	Acres	Payment Unit Number	Acres
1	3.8	3	12.7
2	7.5	4	17.2

**Powerline ROW**

**41.2 Acres**

**Legend**

- Against State (Red)
- Stand
- Forest Access Route
- Administrative Access Only
- Paved Road
- Government Gravel/Dirt
- Private Gravel/Dirt
- Recreational Trails
- MIRIS Section Corner





**TIMBER SALE MAP**

This information provided by authority of Part 525, 1994 PA 451, as amended.

Sale Number  
**71-003-25**

Date  
**04/23/2025**

Forest Management Unit	County	Mapped By: Martell and Lewicki	Scale	Page	Of
Roscommon Mgt Unit	Roscommon	Cruised By: Martell and Lewicki	1:20,000	2	2

Township	Range	Section(s) and Subdivision(s)	NENW,N1/2NE; Sec. 2 N1/2NW,NWNE; Sec. 3 N1/2NW,N1/2NE; Sec. 32 NWNW,S1/2NW,E1/2SW,SWSE; Sec. 4
21N / 22N	03W		

**Cover Type**

A = Aspen	J = Jack Pine	O = Oak	U = Upland Brush
B = Paper Birch	K = Rock	P = Lowland Poplar	UM = Upland Mix Forest
C = Cedar	L = Lowland Brush	Q = Mixed Swamp Conifer	V = Bog or Marsh
D = Treed Bog	LM = Lowland Mix Forest	R = Red Pine	W = White Pine
E = Swamp Hardwoods	M = Maple, Beech, Birch	S = Black Spruce	X = Non Stocked
F = Spruce/Fir	MC = Mixed Conifer	T = Tamarack	Y = Sand
G = Grass	MD = Mixed Deciduous		Z = Water
H = Hemlock	N = Marsh		

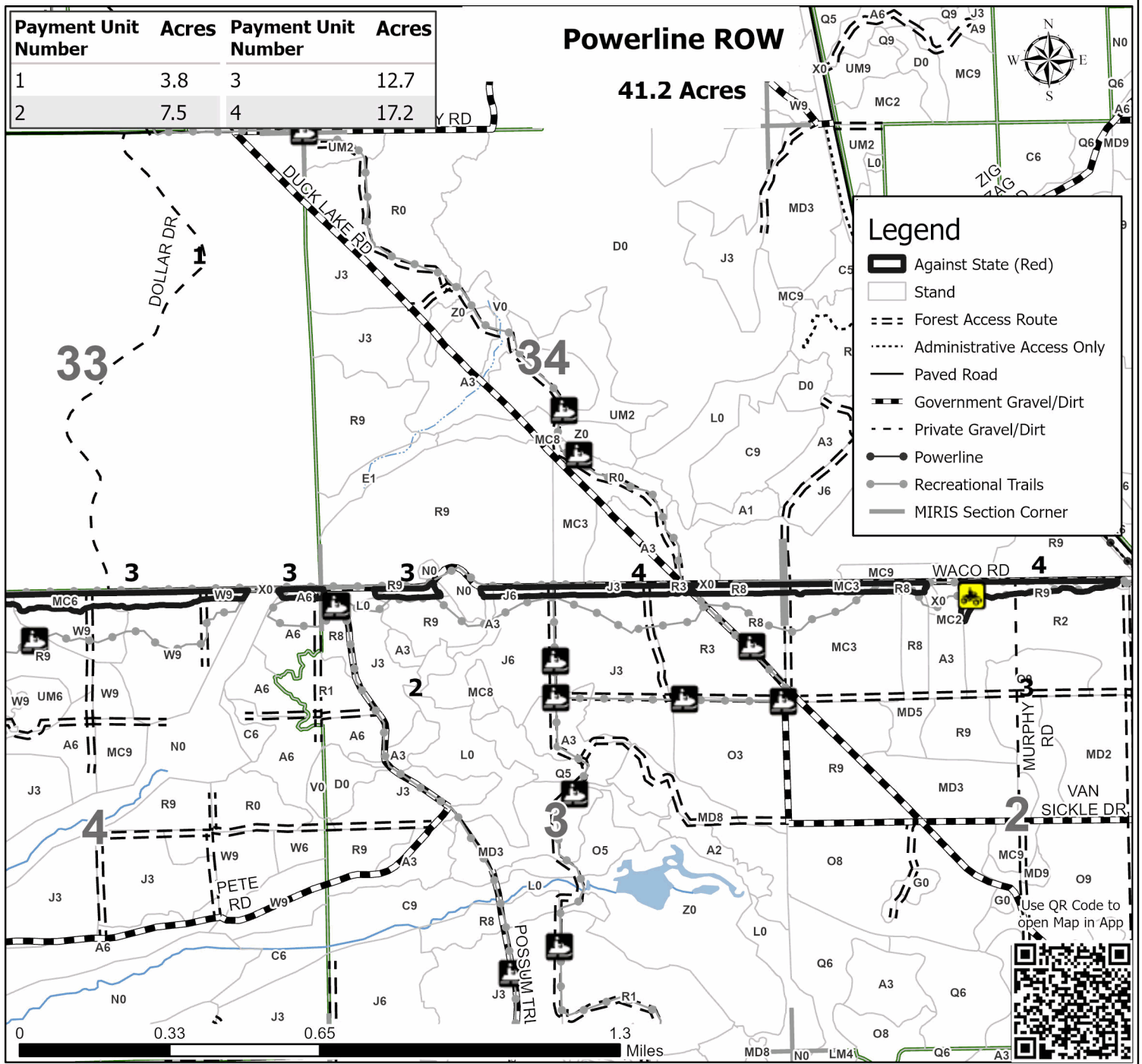
**Density**

0 = Non Stocked	5 = Pole Timber Medium
1 = Seedling Sapling Poor	6 = Pole Timber Well
2 = Seedling Sapling Medium	7 = Saw Timber Poor
3 = Seedling Sapling Well	8 = Saw Timber Medium
4 = Pole Timber Poor	9 = Saw Timber Well

Payment Unit Number	Acres	Payment Unit Number	Acres
1	3.8	3	12.7
2	7.5	4	17.2

**Powerline ROW**

**41.2 Acres**



Powerline ROW (71-003-25)

T21N, R03W, SEC. 2; T21N, R03W, SEC. 3; T21N, R03W, SEC. 4; T22N, R03W,

In response to the notice of sale to be held 9:00 a.m. (local time) on July 9, 2025, I am hereby submitting my sealed bid ( firm offer) for the following forest products to be cut. Bids for individual species must be at or above the advertised price. All non-responsive bid forms may be rejected.

<u>PRODUCTS &amp; SPECIES</u>	<u>ESTIMATED VOLUME*</u>	<u>ADVERTISED PRICE</u>	<u>BID PRICE/UNIT</u>
<b>Sawtimber</b>			
Black/Red (Hybrid) Oak	18.1 MBF	\$ 2.00/MBF	\$ _____
Red Pine	209.5 MBF	\$ 2.00/MBF	\$ _____
White Oak	4.4 MBF	\$ 2.00/MBF	\$ _____
White Pine	35.3 MBF	\$ 2.00/MBF	\$ _____
<b>Pulpwood</b>			
Balsam Fir	18 Cords	\$ 1.00/Cord	\$ _____
Jack Pine	56 Cords	\$ 1.00/Cord	\$ _____
Mixed Aspen	111 Cords	\$ 1.00/Cord	\$ _____
Mixed Hardwood	16 Cords	\$ 1.00/Cord	\$ _____
Mixed Oak	51 Cords	\$ 1.00/Cord	\$ _____
Red Pine	136 Cords	\$ 1.00/Cord	\$ _____
White Pine	59 Cords	\$ 1.00/Cord	\$ _____

\*The volumes are statistically estimated within plus (+) or minus (-) 12.54 percent at 95% confidence level. These estimated volumes are final and not subject to adjustment. Prospective bidders are urged to examine this timber and to make their own estimates of quantity and quality.

I understand that any or all bids may be rejected. All bids must be signed and all bid items must be bid or the bid form may be rejected. I also understand that consideration and awarding a contract will be based upon my past performance and ability to complete the contract based upon equipment and staffing subject to my control .

FEDERAL ID: \_\_\_\_\_ or SOCIAL SECURITY NUMBER: \_\_\_\_\_

Company or individual bidding: \_\_\_\_\_

Company representative's name: \_\_\_\_\_

Address: \_\_\_\_\_

City: \_\_\_\_\_ State: \_\_\_\_\_ Zip: \_\_\_\_\_

IF AVAILABLE, PLEASE PLACE THE PERSONALIZED LABEL FROM YOUR PROSPECTUS IN THE ABOVE BOX.

Individual or company representative's signature: \_\_\_\_\_ Date: \_\_\_\_\_

Phone number : \_\_\_\_\_ Email (optional): \_\_\_\_\_

**THE WINNING BIDDER MUST COMPLETE THE VERIFICATION OF WORKER'S DISABILITY COMPENSATION ACT COMPLIANCE (ON REVERSE SIDE IF DOUBLE SIDED) WITHIN 21 DAYS OF SALE AWARD DATE**



## TIMBER SALE VERIFICATION OF WORKER'S DISABILITY COMPENSATION ACT COMPLIANCE

As required by Act 317, P.A. 1969 (Worker's Compensation) and  
Part 5 of Act 451 of 1994, as amended.

### FOR DEPARTMENT USE ONLY

Sale Number (XX - XXX - XX - XX)

Forest Management Unit:

### VERIFICATION OF WORKER'S DISABILITY COMPENSATION ACT COMPLIANCE

- This verification must be completed and submitted within 21 days of contract award and prior to the issuance of the timber sale contract.
- In addition, if boxes 2B or 2C are checked, then Notice of Exclusion or Certificate of Insurance must be submitted within twenty-one (21) days of the contract award and prior to the issuance of the timber sale contract.
- All Information must be typed or printed except for written signatures.

Please Check Appropriate Categories:

1. My business is organized as (you **must** check one of the boxes below):
  - A. ☐ Sole Proprietorship (individual)
  - B. ☐ Partnership
  - C. ☐ Corporation
2. You **must** check one of the boxes below:
  - A. ☐ I certify my business is a sole proprietorship and it has no employees but the sole proprietor. I am not subject to the Worker's Compensation Laws.
  - B. ☐ I certify my business has satisfied its obligation to the Worker's Compensation Act through the use of an approved Notice of Exclusion (BWC-337, Rev. 5/96). I will provide a copy of the Notice of Exclusion within 21 days of the contract award. (For questions or a copy of the BWC-337, please call the Worker's Compensation Bureau at 517-322-1195).
  - C. ☐ I certify my business has a Worker's Compensation Policy. I will provide an original Certificate of Insurance within twenty-one (21) days of the contract award.
3. If you have checked item 2(A) or 2(B), you **must** indicate the number of **both** full-time and part-time employees, other than yourself, including family members and active partners (if none, you must enter "0").

\_\_\_\_\_ Full-time Employees

\_\_\_\_\_ Part-time Employees

Name of Business		Federal ID (or) Social Security No.
Address		Telephone (       )
City	State	ZIP

*I hereby certify that the above information is true and correct. I agree to notify the Michigan DNR of any changes that occur in factors affecting my coverage during any of my present and future operations.*

\_\_\_\_\_  
Signature of Owner or Authorized Representative

\_\_\_\_\_  
Title

\_\_\_\_\_  
Date

Please complete the "SEALED BID" information on the next page