



**DEPARTMENT OF NATURAL RESOURCES
STATE OF MICHIGAN
TIMBER SALE PROSPECTUS #7516**

SCHEDULED SALE DATE AND TIME: 4:00 p.m. (local time) on May 28, 2025.

LOCATION: TRAVERSE CITY MGMT UNIT, 2122 M 37 SOUTH, TRAVERSE CITY, MI 49685.

PROSPECTUS NOTE: The bidder is advised to inspect the sale area and review the location, estimated volumes, operating costs and contract terms of proposed sales. Please be aware that some landowners may request 60 days or more notice for access across their land.

Notice is hereby given that bids will be received by the Unit Manager, TRAVERSE CITY MANAGEMENT UNIT, for certain timber on the following described lands:

Lollipop Hardwoods (61-035-24) / T27N, R13W, SEC. 18, N1/2NW,NWNE.

T27N, R14W, SEC. 1, NENW,S1/2NW,SWNE,SW,SWSE.

T27N, R14W, SEC. 12, E1/2NW,NWNE.

T27N, R14W, SEC. 13, NENW,NWNE.

Benzie County, Advertised Price \$154,760.20, 198.3 Acres, Hardwood, Aspen.

SALE NOTE: A recreation site such as a trail, pathway, or campground is within the sale area or the vicinity.
Certain restrictions/specifications may be applicable including time restrictions.

South Edge of 4 (61-037-24) / T27N, R13W, SEC. 18, SWSW.

T27N, R14W, SEC. 13, W1/2SW,SESE.

T27N, R14W, SEC. 14, E1/2SE.

Benzie County, Advertised Price \$61,473.50, 32.8 Acres, Aspen, Hardwood.

Mayfield Mix (61-045-24) / T26N, R09W, SEC. 19, SWSE.

T26N, R09W, SEC. 30, NENW,N1/2NE,SWNE.

Grand Traverse County, Advertised Price \$30,981.15, 82.5 Acres, White Pine, Red Pine.

SALE NOTE: A recreation site such as a trail, pathway, or campground is within the sale area or the vicinity.
Certain restrictions/specifications may be applicable including time restrictions.

BID INSTRUCTIONS (VER. 10/10/2022):

1. Scheduled Bid Location, Date, and Time (2/11)

Bids must be received by the Unit Manager, TRAVERSE CITY OFFICE, 2122 M 37 South, Traverse City, MI 49685, no later than 4:00 p.m. (local time) on May 28, 2025. For further information concerning this sale, contact Matthew Edison at 906-291-0095.

2. Bidder's Qualifications (10/22)

If all or part of a timber sale was prepared by a private contractor, the contractor and that contractor's company are not permitted to bid on the timber sale. A person must be 18 years of age or older to purchase timber. Permanent employees of the Department of Natural Resources or members of their immediate household may not bid. Former employees, in the permanent or seasonal class, may not bid until 3 months after the last day of active duty. Bids will not be accepted from individuals or companies appearing on the DNR/FRD No-Bid List. This list contains the names of purchasers who previously failed to execute a contract within 21-days or who have a history of poor performance.

3. Preparation of Sealed Bids (5/16)

Bid Forms may be completed online thru Michigan DNR Timber Sale Online Bidding (OLB) at www.michigan.gov/timberbidding or by completing the hardcopy Bid Form found in the Timber Sale Prospectus. Hardcopy Bid Forms shall be manually signed in ink. Registration in OLB is considered your 'signature' for all bids submitted thru that system. Bid prices must be entered for each species and product in the Bid Price column for all material subject to bidding and all fill-in blanks must be completed. If erasures or other changes appear on the hardcopy Bid Form, each erasure or change must be initialed by the person signing the bid.

4. Submission of Sealed Bids (5/16)

Bid forms may be obtained from the Unit Manager or thru OLB. Bids may be submitted hardcopy or thru OLB. All hardcopy bids must be submitted on the bid form and in an envelope clearly identified as described in this section. NOTE: Only one bid form per bid envelope. Sealed bids must be submitted to the Unit office designated in the prospectus and must be submitted at or prior to the time established in the prospectus. The envelope should show on the outside (a) the sale name or number and (b) the date and time of bid opening, as shown in the prospectus. Bids received after the time specified in the sale prospectus are late bids and will be rejected.

It is possible for a bidder to submit multiple bids on a single sale. For example, a bid may be submitted hardcopy and a bid may be submitted thru OLB. Or, two bidders from the same company could both submit bids on the same sale. If this were to happen, the State would accept all bids received and award the contract accordingly. All bidding and contractual requirements would apply to all bids received.

5. Public Opening of Sealed Bids (7/16)

If conditions permit, the sealed bids will be publicly opened and posted at the time and place set in the prospectus.

If a bidder, present at a bid opening, has submitted bids on more than one sale, that bidder may withdraw their unopened bid envelopes or announce the withdrawal of their online bid after being declared the successful bidder on one sale.

6. Award of Contract (1/11)

Award of the contract will be made to the Bidder whose bid, conforming to the prospectus, is most advantageous to the State of Michigan on the basis of total value at rates bid for the estimated quantities. The State reserves the right to reject any bid or waive any minor irregularity in bids received. A written award mailed (or otherwise furnished) to the successful Bidder shall be deemed to result in a binding contract without further action by either party.

7. Down Payment (1/11)

The Bidder to whom award is made must make a down payment within 21 days of the sale award. The amount of the down payment will be calculated as shown in the Bond and Payment Schedule of this prospectus. Only cash may be used to meet this requirement.

8. Performance Security (1/11)

As guarantee of faithful performance, a cash bond, certificate of deposit, surety bond or irrevocable letter of credit (LOC) is required within 21 days of the sale award. The amount of the performance security is shown in the Bond and

Payment Schedule of this prospectus. If an LOC or surety is used, the coverage must extend for at least 6 months beyond the contract expiration.

9. Worker's Compensation (10/22)

Purchaser shall obtain worker's compensation insurance to cover claims under Michigan's Worker's Disability Compensation Act of 1969 or similar employee benefit act of any other state applicable to an employee. Verification of Worker's Disability Compensation Act Compliance must be completed and submitted within 21 days of contract award and prior to the issuance of the timber sale contract. In addition, if applicable, Notice of Exclusion or Certificate of Insurance must also be submitted.

10. Timber Sale Contract (10/22)

Additional conditions and requirements common to all timber sales are listed on the timber sale contract (R4031) and are available on line at www.michigan.gov/timber. Contact the Unit Manager for additional information or a sample contract. Within 21 days of the date of the award letter, the bidder must sign the contract and provide the required down payment, performance security, and verification of worker's disability compensation. The down payment and performance security shall be in accordance with the provisions of the timber sale contract, in the sums stated in this prospectus. If these actions are not taken, then the Bidder, the Bidder's corporation, and the corporation's principals may not be permitted to bid on State timber sales for a period of 3 months after the first offense, 6 months after the second offense, and 1 year after the third offense. An offense will only be counted against the Bidder for 5 years. In addition, the Bidder certifies that if awarded this contract, the Bidder will complete the timber sale contract in accordance with its terms and any modifications thereof including requirements to purchase, cut, and remove the included timber by the expiration date.

Payment Unit values in the State Forest Timber Sale Contract are calculated based on the advertised value of the Payment Unit as a percentage of the total advertised value of the contract. The advertised value of each Payment Unit is given in the Description of Timber by Payment Unit table on the Timber Sale Information page. For example, if the value of Payment Unit 1 is advertised as \$1,500 and the total Timber Sale value is advertised as \$10,000, the contract price for Payment Unit 1 will be 15% of the total bid price ($\$1,500/\$10,000 * 100$).

11. Disclaimer of Estimates and Bidder's Warranty of Inspection (10/22)

Before submitting this bid, the Bidder is advised and cautioned to inspect the sale area, review the requirements of the sale contract, and take other steps as may be reasonably necessary to ascertain the location, estimated volumes, construction estimates, and operating costs of the proposed sale. Failure to do so will not relieve the Bidder from responsibility for completing the contract.

The Bidder warrants that this bid is submitted solely on the basis of the Bidder's examination and inspection of the quality and quantity of the timber offered for sale and the Bidder's opinion of the value thereof and the costs of recovery. No reliance should be placed on the State of Michigan's estimates of timber quality, quantity or costs of recovery. Bidder further acknowledges that the State of Michigan: (i) expressly disclaims any warranty of fitness of timber for any purpose; (ii) offers this timber as is without any warranty of quality (merchantability) or quantity and (iii) expressly disclaims any warranty as to the quantity or quality of timber sold.

12. Certification and Chain-of-Custody (10/22)

Unless otherwise indicated in the contract under section 7 – Other Conditions of the Sale Specific Conditions & Requirements, the area encompassed by this timber sale is certified to the standards of the Forest Stewardship Council (FSC) - Certificate #SCS-FM/COC-00090N and the Sustainable Forestry Initiative (SFI) - Certificate #NSF-SFIS-5Y031-SF5. Forest products from this sale may be delivered to the mill as "FSC 100% and / or SFI certified" as long as the contractor hauling the forest products is chain-of-custody (COC) certified or covered under a COC certificate from the destination mill. The purchaser is responsible for maintaining COC after leaving the sale area.

13. Good Neighbor Authority (GNA) Requirements (10/22)

If the name of this timber sales contains the acronym GNA, it is authorized by the Good Neighbor Authority (GNA) and covered by various agreements between the U.S. Forest Service and the State. The timber sale occurs on federal land and the following conditions apply:

GNA contracts on US Forest Service land will not be awarded to purchasers on the Federal list of excluded parties. The System for Award Management (SAM) will be checked for active excluded parties prior to award of contract. In

addition, the Bidder to whom award is made must complete an Assurance Regarding Felony Conviction or Tax Delinquent Status for Corporate Applicants (AD-3031).

14. Good Neighbor Authority (GNA) Requirements, con't (10/22)

Bidder certifies, by signing this bid form, that to the best of Bidder's knowledge that the following representations are accurate and complete.

- a. That the Bidder and its principals are not presently debarred, suspended, proposed for debarment, declared ineligible, or voluntary excluded from timber sales (covered transactions) by any Federal department or agency.
- b. That the Bidder and its principals have not within a 3-year period preceding this bid been convicted of or had a civil judgment rendered against them for commission of fraud or a criminal offense in connection with obtaining , attempting to obtain, or performing a public (Federal, State, or local) transaction or contract under a public transaction; violation of Federal or State antitrust statutes or commission of embezzlement, theft, forgery, bribery, falsification or destruction of records, making false statements, or receiving stolen property.
- c. That the Bidder and its principals are not presently indicted for or otherwise criminally or civilly charged by a governmental entity (Federal, State, or local) with commission of any of the offenses enumerated in paragraph b of this certification.
- d. That the Bidder and its principals have not within a 3-year period preceding this bid had one or more public transactions (Federal, State, or local) terminated for breach or default of a timber or forest product contract.

Bidders that cannot certify this requirement, in whole or in part, shall submit an explanation with their bid.

Scott Bowen
Director

TIMBER SALE INFORMATION

Lollipop Hardwoods (61-035-24)

T27N, R13W, SEC. 18; T27N, R14W, SEC. 1; T27N, R14W, SEC. 12; T27N, R14W, SEC. 13.
Benzie County (Advertised Price \$154,760.20)

SALE NOTE: A recreation site such as a trail, pathway, or campground is within the sale area or the vicinity. Certain restrictions/specifications may be applicable including time restrictions.

A timber sale contract for this lump sum, sealed bid timber sale will be awarded to the responsible bidder offering the highest sealed bid price. All units of volume listed below were estimated using the Inventory Manager computer program and the new Michigan taper model. Bids must be at or above the following advertised price for each product and species:

<u>PRODUCTS & SPECIES</u>	<u>ESTIMATED UNITS*</u>	<u>ADVERTISED PRICE</u>
Sawtimber		
American Elm	1.1 MBF	\$ 42.00 / MBF
Basswood	61.8 MBF	\$ 116.00 / MBF
Beech	90.6 MBF	\$ 231.00 / MBF
Black Cherry	20.3 MBF	\$ 183.00 / MBF
Mixed Aspen	136.6 MBF	\$ 115.00 / MBF
Red Maple	322.7 MBF	\$ 125.00 / MBF
Red Oak	1.3 MBF	\$ 153.00 / MBF
Sugar Maple	103.0 MBF	\$ 341.00 / MBF
Pulpwood		
Mixed Aspen	291 Cords	\$ 23.90 / Cord
Mixed Hardwood	1,137 Cords	\$ 20.90 / Cord
Red Oak	8 Cords	\$ 27.50 / Cord
White Pine	22 Cords	\$ 27.05 / Cord

* The total volume is statistically estimated within plus (+) or minus (-) 11.96 percent. There are an estimated 3,184 cords on this timber sale, plus or minus 381 cords at the 95% confidence level. The estimated units are final and not subject to adjustment. Prospective bidders are urged to examine this timber and to make their own estimates of quantity and quality.

BOND AND PAYMENT SCHEDULE:

1. A bond in the amount of \$7,738.00 to insure faithful performance of the conditions of the contract will be deposited by the successful bidder within 21 days of the sale award.
2. Cutting in any sale or unit without the required advance payment would be considered a trespass.
3. Total payment must be paid in advance or according to the following schedule:
 - (a) Ten percent (10%) of the sale value must be paid within 21 days of the sale award.
 - (b) The 10% down payment will be credited towards the first unit cut.
 - (c) Payment for each of the following units must be made before cutting begins in that unit:

<u>PAYMENT UNIT NUMBER</u>	<u>PERCENT OF TOTAL SALE VALUE</u>
01	18.1%
02	3.0%
03	16.9%
04	20.7%
05	9.6%
06	11.3%
07	17.7%
08	2.7%
4. If no cutting takes place, the 10% down payment will not be refunded.
5. Operations on the contract issued will terminate on 12/31/2027.

SALE STATISTICS

Volumes were calculated in cubic feet using the Michigan taper model. Cubic foot volume includes all wood inside bark for the product indicated. For display purposes, cubic feet were converted to cords and MBF using a simple conversion factor, e.g. 79 cubic feet per cord and 185 cubic feet per MBF. The cubic foot volumes are precise; the cords and MBF volumes are not. Cubic foot volume cannot be directly converted to cords or boards with precision.

SALE VOLUMES

The total estimated sale volume may not equal the sum of the species/products due to the nature of statistical calculations associated with double sampling methodology.

VOLUME			STATISTICAL RANGE IN CORDS	
TOTAL CUBIC FEET	TOTAL CORDS	PERCENT ERROR	MINIMUM	MAXIMUM
251,549	3,184	11.96%	2,803	3,565

VDU VOLUMES

A VDU is a Volume Determination Unit. Volumes and their associated statistics are calculated at the VDU level and summarized to the sale level. There is often a one to one relationship between a VDU and a Payment Unit, but not always, depending on the cruise design. Refer to the VDU TO PAYMENT UNIT table.

	VOLUME			RANGE IN CORDS	
VDU	TOTAL CUBIC FEET	TOTAL CORDS	PERCENT ERROR	MINIMUM	MAXIMUM
9	45,439	575	28.32%	412	738
19	8,942	113	53.82%	52	174
25	96,768	1,225	17.26%	1,014	1,436
94	18,588	235	38.87%	144	327
97	30,109	381	45.67%	207	555
119	43,287	548	34.97%	356	740
131	8,418	107	45.64%	58	155
TOTAL:	251,549	3,184		2,243	4,125

VDU TO PAYMENT UNIT

When a VDU is associated with more than one Payment Unit (PU), the VDU volumes are assigned to the PU based on acres of the VDU within the PU.

VDU	VDU ACRES	PU	PU ACRES
9	45.8	1	45.8
19	8.9	2	8.9
25	84.6	3	38.0
25	84.6	4	46.6
94	12.5	6	12.5
97	7.0	5	7.0
119	36.8	7	36.8
131	2.7	8	2.7
TOTAL:	282.9		198.3

DESCRIPTION OF TIMBER BY PAYMENT UNIT (PU)

PU	MARKET GROUP	PRODUCT	QUANTITY	UNIT	ACRES	ADVERTISE PRICE
1	Beech	Sawtimber	24.4	MBF	45.8	\$28,016.10
	Black Cherry		1.2	MBF		
	Red Maple		120.6	MBF		
	Sugar Maple		7.6	MBF		
	Mixed Hardwood		215	Cords		
	<i>Beech</i>	Pulpwood	44	<i>Cords</i>		
	<i>Black Cherry</i>		5	<i>Cords</i>		
	<i>Ironwood</i>		1	<i>Cords</i>		
	<i>Red Maple</i>		118	<i>Cords</i>		
	<i>Sugar Maple</i>		47	<i>Cords</i>		
2	Black Cherry	Sawtimber	13.2	MBF	8.9	\$4,651.40
	Mixed Aspen		0.6	MBF		
	<i>B. T. Aspen</i>		0.6	<i>MBF</i>		
	Red Maple	Pulpwood	4.5	MBF		
	Mixed Aspen		2	Cords		
	<i>B. T. Aspen</i>		2	<i>Cords</i>		
	Mixed Hardwood		46	Cords		
	<i>Black Cherry</i>		29	<i>Cords</i>		
	<i>Red Maple</i>		17	<i>Cords</i>		
	White Pine		22	Cords		
3	American Elm	Sawtimber	0.5	MBF	38.0	\$26,148.00
	Beech		18.1	MBF		
	Black Cherry		0.7	MBF		
	Mixed Aspen	Pulpwood	6.6	MBF		
	<i>Quaking Aspen</i>		6.6	<i>MBF</i>		
	Red Maple		88.2	MBF		
	Sugar Maple		13.9	MBF		
	Mixed Aspen		16	Cords		
	<i>Quaking Aspen</i>		16	<i>Cords</i>		
	Mixed Hardwood		235	Cords		
	<i>Beech</i>		62	<i>Cords</i>		
	<i>Black Cherry</i>		14	<i>Cords</i>		
	<i>Ironwood</i>		1	<i>Cords</i>		
	<i>Red Maple</i>		120	<i>Cords</i>		
	<i>Sugar Maple</i>		38	<i>Cords</i>		
4	American Elm	Sawtimber	0.6	MBF	46.6	\$32,025.70
	Beech		22.3	MBF		
	Black Cherry		0.8	MBF		
	Mixed Aspen	Pulpwood	8.0	MBF		
	<i>Quaking Aspen</i>		8.0	<i>MBF</i>		
	Red Maple		108.1	MBF		
	Sugar Maple		17.0	MBF		
	Mixed Aspen		19	Cords		
	<i>Quaking Aspen</i>		19	<i>Cords</i>		
	Mixed Hardwood		288	Cords		
	<i>American Elm</i>		1	<i>Cords</i>		
	<i>Beech</i>		75	<i>Cords</i>		
	<i>Black Cherry</i>		17	<i>Cords</i>		
	<i>Ironwood</i>		1	<i>Cords</i>		
	<i>Red Maple</i>		148	<i>Cords</i>		
	<i>Sugar Maple</i>		46	<i>Cords</i>		
5	Black Cherry	Sawtimber	2.8	MBF	7.0	\$14,852.40
	Mixed Aspen		91.6	MBF		
	<i>B. T. Aspen</i>	Pulpwood	91.6	<i>MBF</i>		
	Mixed Aspen		154	Cords		
	<i>B. T. Aspen</i>		154	<i>Cords</i>		

DESCRIPTION OF TIMBER BY PAYMENT UNIT (PU), CON'T

PU	MARKET GROUP	PRODUCT	QUANTITY	UNIT	ACRES	ADVERTISE PRICE
5 con't	Mixed Hardwood <i>Black Cherry</i>	Pulpwood	6 6	Cords <i>Cords</i>		
6	Basswood Beech Sugar Maple Mixed Hardwood <i>Basswood</i> <i>Beech</i> <i>Black Cherry</i> <i>Sugar Maple</i>	Sawtimber Pulpwood	14.9 6.8 35.4 102 7 41 5 49	MBF MBF MBF Cords <i>Cords</i> <i>Cords</i> <i>Cords</i> <i>Cords</i>	12.5	\$17,502.40
7	Basswood Beech Mixed Aspen <i>Quaking Aspen</i> Red Maple Red Oak Sugar Maple Mixed Aspen <i>Quaking Aspen</i> Mixed Hardwood <i>Basswood</i> <i>Beech</i> <i>Ironwood</i> <i>Red Maple</i> <i>Sugar Maple</i> Red Oak	Sawtimber Pulpwood	46.9 19.0 20.0 <i>20.0</i> 1.3 1.3 26.0 37 <i>37</i> 235 44 34 24 38 95 8	MBF MBF MBF <i>MBF</i> MBF MBF MBF Cords <i>Cords</i> Cords <i>Cords</i> <i>Cords</i> <i>Cords</i> <i>Cords</i> <i>Cords</i> Cords	36.8	\$27,372.60
8	Black Cherry Mixed Aspen <i>B. T. Aspen</i> Sugar Maple Mixed Aspen <i>B. T. Aspen</i> Mixed Hardwood <i>Black Cherry</i> <i>Sugar Maple</i>	Sawtimber Pulpwood	1.6 9.8 9.8 3.1 63 63 10 1 9	MBF MBF <i>MBF</i> MBF Cords <i>Cords</i> Cords <i>Cords</i> <i>Cords</i>	2.7	\$4,191.60
TOTAL:			737.4	MBF		
TOTAL:			1,458	Cords		

Sale Specific Conditions & Requirements

Sale Name: Lollipop Hardwoods

Sale Number: 61-035-24 Seq#: 1

1 - Sale Area

1.2 - Boundaries

1.2.1 - Painted Boundaries (9/19)

The sale boundary and Payment Unit boundaries are marked and identified by red paint and roads. Exterior sale boundary lines against state are marked with red paint, with the exception of the northern Payment Unit boundaries for Payment Units 6 and 7, which are unpainted and designated by Fowler Road. Interior Payment Unit boundaries are marked with red paint. The painted boundary line trees are not Included Timber and are to be protected.

2 - Timber Specifications

2.1 - Included Timber

2.1.3 - Cut Tree Marked Unit(s) (12/08)

Within Payment Unit(s) 1-4, 6, and 7, all trees are designated for cutting when marked with orange paint above and below stump height, regardless of merchantability. In addition, within Payment Unit 2, all black cherry trees are designated for cutting, regardless of merchantability.

2.1.7 - Leave Tree Marked Unit(s) (6/14)

Within Payment Unit(s) 5 and 8, all aspen and cherry trees, which meet minimum piece specifications in 2.2 Utilization, are designated for cutting. In addition, do not cut any trees marked with green paint above and below stump height. Furthermore, all sub merchantable ironwood and beech may be cut as necessary for operation of logging equipment/harvest of designated timber but must be severed at ground level and laid flat on the ground; not just broken, bent, or pushed over. Finally, within Payment Unit 8, all maple trees, which meet minimum piece specifications in 2.2 Utilization, are designated for cutting.

2.2 - Utilization

2.2.6 - Roundwood Operation Required (3/21)

The skidding of whole trees or tree segments with limbs attached is prohibited within all Payment Units. All products must be produced as roundwood and forwarded to existing roads or landing areas in final product length.

4 - Transportation

4.1 - Construction

4.1.3 - Slash and Earthen Piles (8/04)

Piles or windrows of earth along roads and landings that have been widened or constructed shall be leveled. Slash from road maintenance or construction, including stumps, shall be dispersed throughout the sale as determined by the Sale Administrator.

4.1.12 - No New Roads (1/12)

No new roads will be permitted in any Payment Unit. All operations are limited to existing roads. Skid trails outside of the sale unit boundaries will only be allowed as agreed with the Sale Administrator.

4.2 - Maintenance

4.2.5 - Two Wheel Drive Condition (2/04)

All existing trail roads on and adjacent to the Sale Area must be passable by two-wheel drive traffic for the duration of the sale.

5 - Operations

5.2 - Conduct of Operations

5.2.1 - Slash

5.2.1.8 - Slash Height (12/08)

No slash or tree tops may exceed 24 inches in height. Slash should be evenly distributed as much as possible.

5.2.3 - Operating Restrictions

5.2.3.3 - Bark Slippage Restriction (3/09)

Within Payment Unit(s) 1-8, unless changed by written agreement with the Sale Administrator, cutting and skidding are not permitted during the period of April 15 to July 15. This restriction is because of bark slippage.

5.2.4 - Dead and Down Creation

5.2.4.4 - Dead and Down Creation, Grouse (6/18)

To encourage grouse and other wildlife, in Payment Unit(s) 5 and 8 leave one 12-inch or larger diameter (or largest diameter trees within stand) whole tree on the ground for every 2 acres, preferably a hardwood species such as maple. These trees will be evenly scattered throughout the unit, preferably at least 50 feet from any roads, two-tracks, or trails open to vehicles. This can be an unmerchantable piece or a full tree.

5.4 - Soil Protection

5.4.3 - Erosion Control (12/08)

Skid trails or haul roads may require erosion control structures or berms per direction of the Unit Manager or his/her representative.

5.4.4 - Slope Protection (9/19)

Skid trails and roads on slopes shall be water barred with slash, stumps, as soon as use is complete to prevent erosion.

6 - Safety and Fire Prevention

6.2 - Signing

6.2.3 - Recreational Trail Posting (10/20)

The Purchaser is responsible for posting and maintaining caution signs on the horse/hiking trail that is the forest road in Payment Unit 5 prior to beginning operations. The trail must be posted at appropriate distances from the Sale Area to warn of logging activity and truck traffic at both ends of the trail. Signs must be removed when harvest operations are suspended or completed. The Purchaser will provide these signs.

**TIMBER SALE MAP**

This information provided by authority of Part 525, 1994 PA 451, as amended.

Sale Number

61-035-24

Date

09/16/2024

Forest Management Unit

County

Mapped By: Craig Allen

Scale

Page

Of

Traverse City Mgt Unit

Benzie

Cruised By: Contractors / Allen

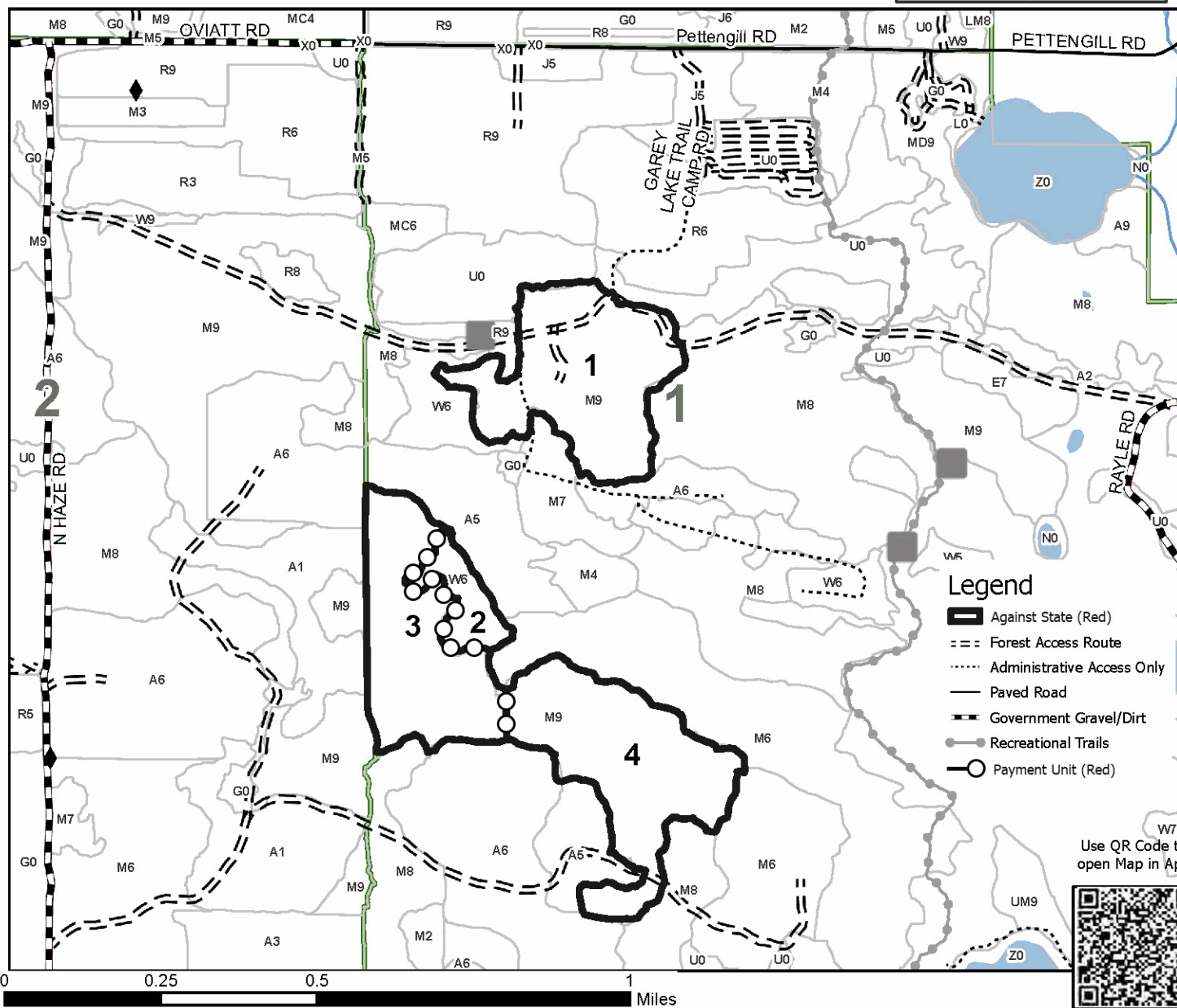
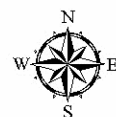
1:15,840**1****2**Township
27NRange
13W /Section(s) N1/2NW,NWNE;
Subdivision(s) Sec. 1 NENW,S1/2NW,SWNE,SW,SWSE; Sec. 12 E1/2NW,NWNE; Sec. 13 NENW,NWNE; Sec. 18**Cover Type**

A = Aspen	J = Jack Pine	O = Oak	U = Upland Brush
B = Paper Birch	K = Rock	P = Lowland Poplar	UM = Upland Mix Forest
C = Cedar	L = Lowland Brush	Q = Mixed Swamp Conifer	V = Bog or Marsh
D = Treed Bog	LM = Lowland Mix Forest	R = Red Pine	W = White Pine
E = Swamp Hardwoods	M = Maple, Beech, Birch	S = Black Spruce	X = Non Stocked
F = Spruce/Fir	MC = Mixed Conifer	T = Tamarack	Y = Sand
G = Grass	MD = Mixed Deciduous	Z = Water	
H = Hemlock	N = Marsh		

Density

0 = Non Stocked	5 = Pole Timber Medium
1 = Seedling Sapling Poor	6 = Pole Timber Well
2 = Seedling Sapling Medium	7 = Saw Timber Poor
3 = Seedling Sapling Well	8 = Saw Timber Medium
4 = Pole Timber Poor	9 = Saw Timber Well

PU #	Acres	PU #	Acres
1	45.8	5	7
2	8.9	6	12.5
3	38	7	36.8
4	46.6	8	2.7

**Lollipop
Hardwoods
198.3 Acres**



TIMBER SALE MAP

This information provided by authority of Part 525, 1994 PA 451, as amended.

Sale Number

61-035-24

Date

10/09/2024

Forest Management Unit

County

Mapped By: Craig Allen

Scale

Page

Of

Traverse City Mgt Unit

Benzie

Cruised By: Contractors / Allen

1:15,840

2

2

Township
27N

Range
13W /

Section(s) and N1/2NW,NWNE;
Subdivision(s) Sec. 1 NENW,S1/2NW,SWNE,SW,SWSE; Sec. 12 E1/2NW,NWNE; Sec. 13 NENW,NWNE; Sec. 18

Cover Type

A = Aspen	J = Jack Pine	O = Oak	U = Upland Brush
B = Paper Birch	K = Rock	P = Lowland Poplar	UM = Upland Mix Forest
C = Cedar	L = Lowland Brush	Q = Mixed Swamp Conifer	V = Bog or Marsh
D = Treed Bog	LM = Lowland Mix Forest	R = Red Pine	W = White Pine
E = Swamp Hardwoods	M = Maple, Beech, Birch	S = Black Spruce	X = Non Stocked
F = Spruce/Fir	MC = Mixed Conifer	T = Tamarack	Y = Sand
G = Grass	MD = Mixed Deciduous	Z = Water	
H = Hemlock	N = Marsh		

Density

0 = Non Stocked	5 = Pole Timber Medium
1 = Seedling Sapling Poor	6 = Pole Timber Well
2 = Seedling Sapling Medium	7 = Saw Timber Poor
3 = Seedling Sapling Well	8 = Saw Timber Medium
4 = Pole Timber Poor	9 = Saw Timber Well

PU # Acres PU # Acres

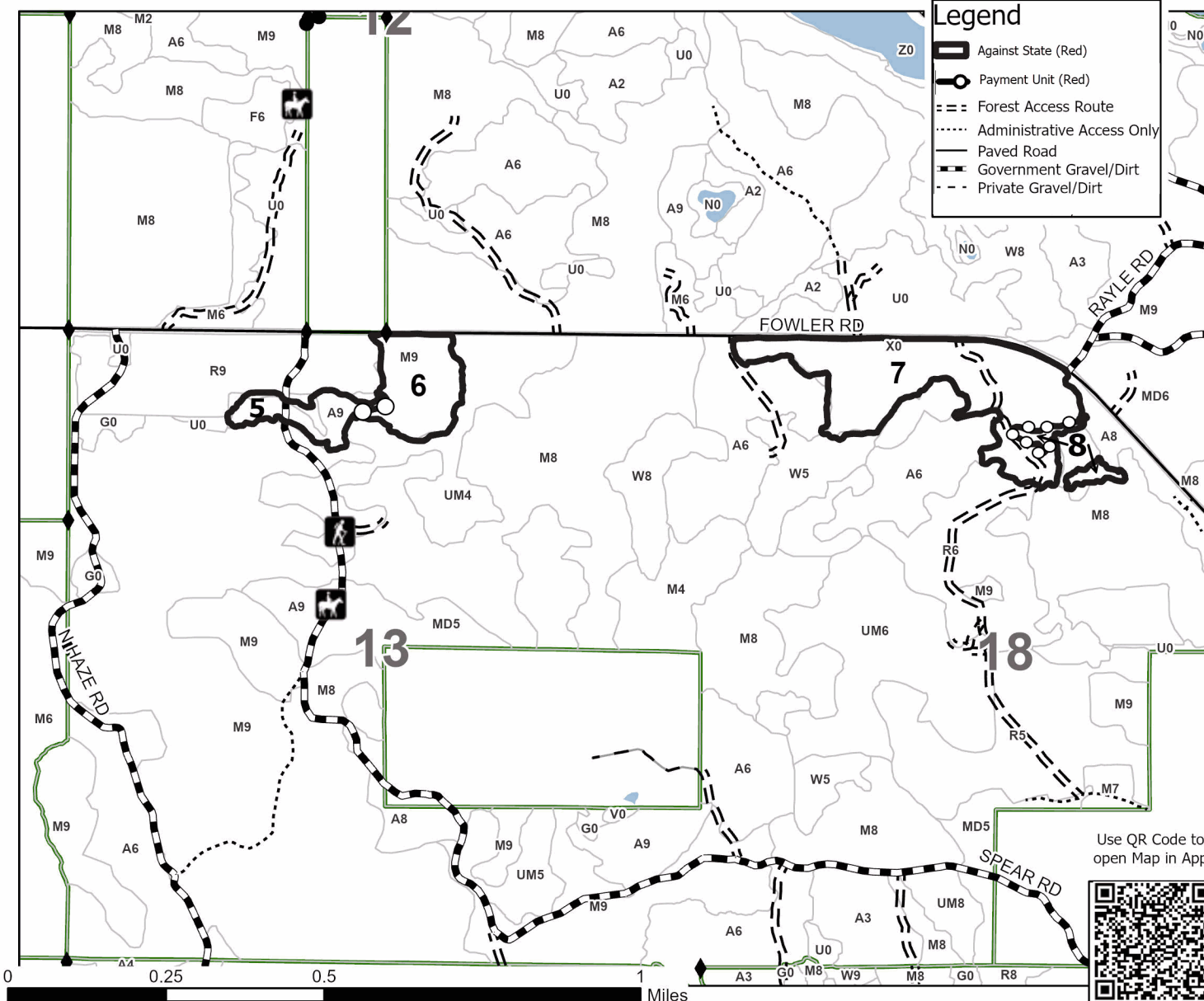
1	45.8	5	7
2	8.9	6	12.5
3	38	7	36.8
4	46.6	8	2.7



Lollipop Hardwoods 198.3 Acres

Legend

	Against State (Red)
	Payment Unit (Red)
	Forest Access Route
	Administrative Access Only
	Paved Road
	Government Gravel/Dirt
	Private Gravel/Dirt



Use QR Code to
open Map in App



TIMBER SALE INFORMATION

South Edge of 4 (61-037-24)

T27N, R13W, SEC. 18; T27N, R14W, SEC. 13; T27N, R14W, SEC. 14.
Benzie County (Advertised Price \$61,473.50)

A timber sale contract for this lump sum, sealed bid timber sale will be awarded to the responsible bidder offering the highest sealed bid price. All units of volume listed below were estimated using the Inventory Manager computer program and the new Michigan taper model. Bids must be at or above the following advertised price for each product and species:

<u>PRODUCTS & SPECIES</u>	<u>ESTIMATED UNITS*</u>	<u>ADVERTISED PRICE</u>
Sawtimber		
B. T. Aspen	179.5 MBF	\$ 115.00 / MBF
Beech	12.4 MBF	\$ 231.00 / MBF
Black Cherry	10.2 MBF	\$ 183.00 / MBF
Red Maple	110.4 MBF	\$ 125.00 / MBF
Sugar Maple	11.5 MBF	\$ 341.00 / MBF
Pulpwood		
Mixed Aspen	518 Cords	\$ 23.90 / Cord
Mixed Hardwood	287 Cords	\$ 20.90 / Cord

* The total volume is statistically estimated within plus (+) or minus (-) 23.35 percent. There are an estimated 1,565 cords on this timber sale, plus or minus 366 cords at the 95% confidence level. The estimated units are final and not subject to adjustment. Prospective bidders are urged to examine this timber and to make their own estimates of quantity and quality.

BOND AND PAYMENT SCHEDULE:

- A bond in the amount of \$3,074.00 to insure faithful performance of the conditions of the contract will be deposited by the successful bidder within 21 days of the sale award.
- Cutting in any sale or unit without the required advance payment would be considered a trespass.
- Total payment must be paid in advance or according to the following schedule :
 - Ten percent (10%) of the sale value must be paid within 21 days of the sale award.
 - The 10% down payment will be credited towards the first unit cut.
 - Payment for each of the following units must be made before cutting begins in that unit:

PAYMENT UNIT NUMBER	PERCENT OF TOTAL SALE VALUE
01	51.6%
02	48.4%
- If no cutting takes place, the 10% down payment will not be refunded.
- Operations on the contract issued will terminate on 12/31/2027.

SALE STATISTICS

Volumes were calculated in cubic feet using the Michigan taper model. Cubic foot volume includes all wood inside bark for the product indicated. For display purposes, cubic feet were converted to cords and MBF using a simple conversion factor, e.g. 79 cubic feet per cord and 185 cubic feet per MBF. The cubic foot volumes are precise; the cords and MBF volumes are not. Cubic foot volume cannot be directly converted to cords or boards with precision.

SALE VOLUMES

The total estimated sale volume may not equal the sum of the species/products due to the nature of statistical calculations associated with double sampling methodology.

VOLUME		STATISTICAL RANGE IN CORDS		
TOTAL CUBIC FEET	TOTAL CORDS	PERCENT ERROR	MINIMUM	MAXIMUM
123,654	1,565	23.35%	1,200	1,931

VDU VOLUMES

A VDU is a Volume Determination Unit. Volumes and their associated statistics are calculated at the VDU level and summarized to the sale level. There is often a one to one relationship between a VDU and a Payment Unit, but not always, depending on the cruise design. Refer to the VDU TO PAYMENT UNIT table.

	VOLUME			RANGE IN CORDS	
VDU	TOTAL CUBIC FEET	TOTAL CORDS	PERCENT ERROR	MINIMUM	MAXIMUM
134	61,467	778	31.40%	534	1,022
151	62,188	787	35.58%	507	1,067
TOTAL:	123,654	1,565		1,041	2,090

VDU TO PAYMENT UNIT

When a VDU is associated with more than one Payment Unit (PU), the VDU volumes are assigned to the PU based on acres of the VDU within the PU.

VDU	VDU ACRES	PU	PU ACRES
134	17.1	1	17.1
151	15.7	2	15.7
TOTAL:	32.8		32.8

DESCRIPTION OF TIMBER BY PAYMENT UNIT (PU)

PU	MARKET GROUP	PRODUCT	QUANTITY	UNIT	ACRES	ADVERTISE PRICE
1	B. T. Aspen	Sawtimber	49.7	MBF	17.1	\$31,746.00
	Beech		12.4	MBF		
	Black Cherry		10.2	MBF		
	Red Maple		88.9	MBF		
	Sugar Maple		4.8	MBF		
	Mixed Aspen	Pulpwood	147	Cords		
	B. T. Aspen		134	Cords		
	Quaking Aspen		13	Cords		
	Mixed Hardwood		241	Cords		
	Beech		47	Cords		
	Black Cherry		12	Cords		
	Ironwood		4	Cords		
	Red Maple		155	Cords		
	Sugar Maple		23	Cords		
2	B. T. Aspen	Sawtimber	129.8	MBF	15.7	\$29,727.50
	Red Maple		21.5	MBF		
	Sugar Maple		6.7	MBF		
	Mixed Aspen	Pulpwood	371	Cords		
	B. T. Aspen		371	Cords		
	Mixed Hardwood		46	Cords		
	Red Maple		37	Cords		
	Sugar Maple		9	Cords		
	TOTAL:			324.0		
TOTAL:			805	Cords		

Sale Specific Conditions & Requirements

Sale Name: South Edge of 4

Sale Number: 61-037-24 Seq#: 2

1 - Sale Area

1.2 - Boundaries

1.2.1 - Painted Boundaries (9/19)

The sale boundary and Payment Unit boundaries are marked and identified by red paint. Exterior sale boundary lines against state are marked with red paint with the exception of the northern boundary of Payment Unit 2, which is unpainted and designated by Spear Road. The painted boundary line trees are not Included Timber and are to be protected.

2 - Timber Specifications

2.1 - Included Timber

2.1.7 - Leave Tree Marked Unit(s) (6/14)

Within Payment Unit(s) 1 and 2, all aspen, maple, cherry, and ironwood trees are designated for cutting, regardless of merchantability, except do not cut any trees marked with green paint above and below stump height. In addition, within Payment Unit 1, all beech trees are designated for cutting, regardless of merchantability. Furthermore, within Payment Unit 2, all beech that are 10 inches or less at DBH, which meet minimum piece specifications in 2.2 Utilization, are designated for cutting.

2.2 - Utilization

2.2.3 - Stump heights (4/07)

Stump heights within Payment Units 1 and 2 shall not exceed 12 inches for trees greater than 10 inches DBH and 4 inches for trees smaller than 10 inches DBH.

2.2.9 - No Chipping Permitted (12/08)

Within Payment Unit(s) 1, all wood must be removed by whole tree, tree segment, or roundwood. No chipping is permitted.

4 - Transportation

4.1 - Construction

4.1.3 - Slash and Earthen Piles (8/04)

Piles or windrows of earth along roads and landings that have been widened or constructed shall be leveled. Slash from road maintenance or construction, including stumps, shall be dispersed throughout the Sale Area as determined by the Sale Administrator.

4.1.12 - No New Roads (1/12)

No new roads will be permitted in any Payment Unit. All operations are limited to existing roads. Skid trails only will be allowed and may need closing with slash and or stumps if determined by the Sale Administrator.

5 - Operations

5.2 - Conduct of Operations

5.2.1 - Slash

5.2.1.8 - Slash Height (12/08)

No slash or tree tops may exceed 24 inches in height.


5.2.4 - Dead and Down Creation

5.2.4.2 - Dead and down creation, hare and grouse (1/14)

To improve habitat for snowshoe hare, grouse, and other species, the Purchaser is to leave one 12-inch diameter or larger log size pieces on the ground for every two acres. They should be scattered evenly throughout the sale and preferably at least 50 feet from any road or trail open to vehicles. These pieces should have a minimum length of 8 feet. They can be of any tree species and can be an un-merchantable piece of wood or a full tree.

TIMBER SALE MAP

This information provided by authority of Part 525, 1994 PA 451, as amended.



Michigan Department of Natural Resources - Forest Resources Division

TIMBER SALE MAP

This information provided by authority of Part 525, 1994 PA 451, as amended.

Sale Number
61-037-24

Date
09/16/2024

Forest Management Unit	County	Mapped By: Melina Hurin	Scale	Page	Of
Traverse City Mgt Unit	Benzie	Cruised By: Craig Allen	1:15,840	1	1
Township 27N	Range 13W /	Section(s) and Subdivision(s) Sec. 13 W1/2SW,SESE; Sec. 14 E1/2SE; Sec. 18 SWSW;			

Cover Type

A = Aspen	J = Jack Pine	O = Oak	U = Upland Brush
B = Paper Birch	K = Rock	P = Lowland Poplar	UM = Upland Mix Forest
C = Cedar	L = Lowland Brush	Q = Mixed Swamp Conifer	V = Bog or Marsh
D = Treed Bog	LM = Lowland Mix Forest	R = Red Pine	W = White Pine
E = Swamp Hardwoods	M = Maple, Beech, Birch	S = Black Spruce	X = Non Stocked
F = Spruce/Fir	MC = Mixed Conifer	T = Tamarack	Y = Sand
G = Grass	MD = Mixed Deciduous		Z = Water
H = Hemlock	N = Marsh		

Density

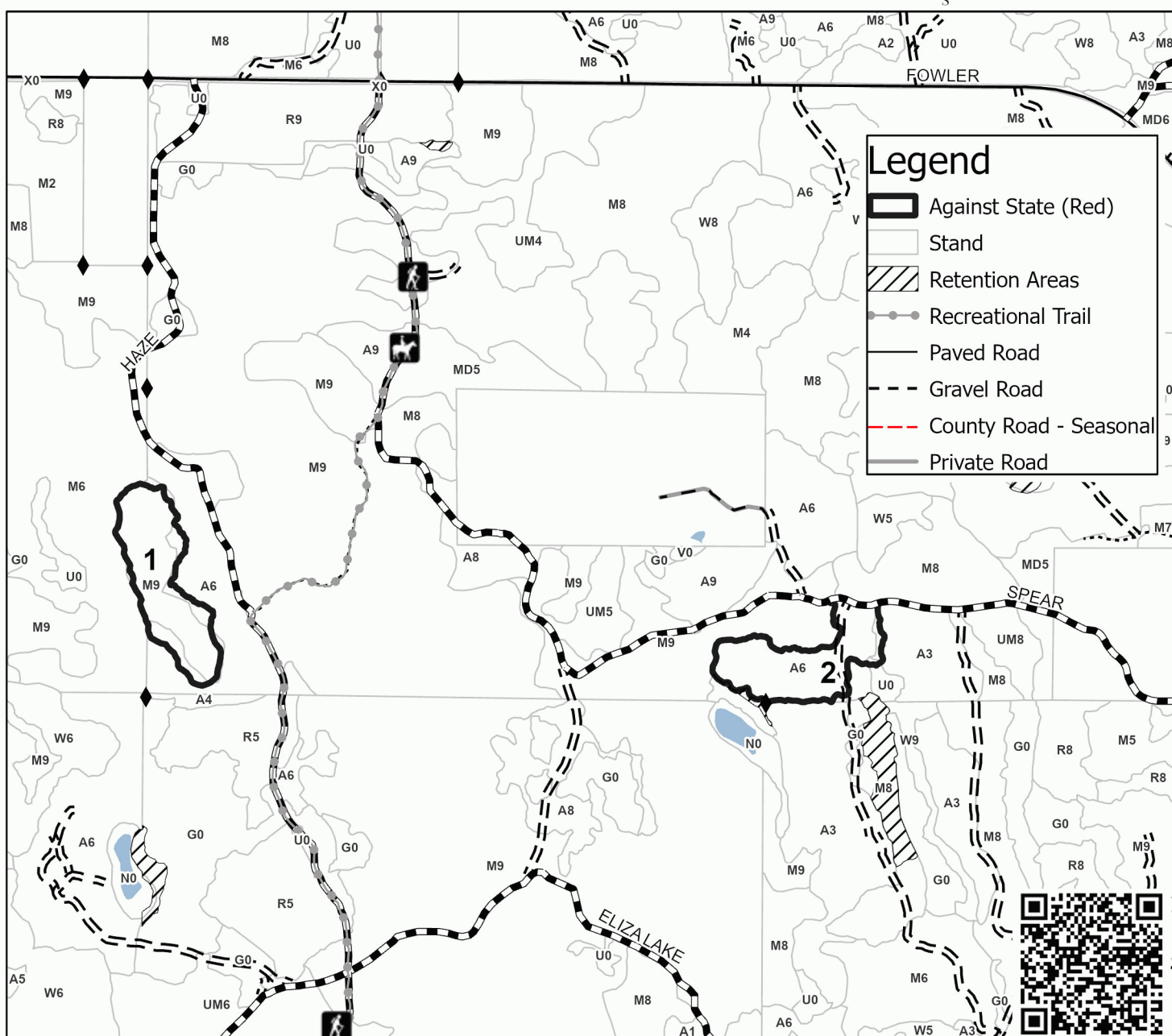
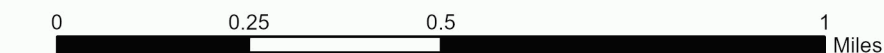
0 = Non Stocked	5 = Pole Timber Medium
1 = Seedling Sapling Poor	6 = Pole Timber Well
2 = Seedling Sapling Medium	7 = Saw Timber Poor
3 = Seedling Sapling Well	8 = Saw Timber Medium
4 = Pole Timber Poor	9 = Saw Timber Well

PU #	Acres
1	100
2	100
3	100
4	100
5	100
6	100
7	100
8	100
9	100
10	100
11	100
12	100
13	100
14	100
15	100
16	100
17	100
18	100
19	100
20	100
21	100
22	100
23	100
24	100
25	100
26	100
27	100
28	100
29	100
30	100
31	100
32	100
33	100
34	100
35	100
36	100
37	100
38	100
39	100
40	100
41	100
42	100
43	100
44	100
45	100
46	100
47	100
48	100
49	100
50	100
51	100
52	100
53	100
54	100
55	100
56	100
57	100
58	100
59	100
60	100
61	100
62	100
63	100
64	100
65	100
66	100
67	100
68	100
69	100
70	100
71	100
72	100
73	100
74	100
75	100
76	100
77	100
78	100
79	100
80	100
81	100
82	100
83	100
84	100
85	100
86	100
87	100
88	100
89	100
90	100
91	100
92	100
93	100
94	100
95	100
96	100
97	100
98	100
99	100
100	100

1	17.1
2	15.7

South Edge of 4

32.8 Acres



TIMBER SALE INFORMATION

Mayfield Mix (61-045-24)

T26N, R09W, SEC. 19; T26N, R09W, SEC. 30.

Grand Traverse County (Advertised Price \$30,981.15)

SALE NOTE: A recreation site such as a trail, pathway, or campground is within the sale area or the vicinity. Certain restrictions/specifications may be applicable including time restrictions.

A timber sale contract for this lump sum, sealed bid timber sale will be awarded to the responsible bidder offering the highest sealed bid price. All units of volume listed below were estimated using the Inventory Manager computer program and the new Michigan taper model. Bids must be at or above the following advertised price for each product and species:

<u>PRODUCTS & SPECIES</u>	<u>ESTIMATED UNITS*</u>		<u>ADVERTISED PRICE</u>
Sawtimber			
Red Pine	108.9	MBF	\$ 100.00 / MBF
White Oak	5.4	MBF	\$ 44.00 / MBF
White Pine	27.5	MBF	\$ 56.00 / MBF
Pulpwood			
B. T. Aspen	2	Cords	\$ 17.55 / Cord
Jack Pine	286	Cords	\$ 14.50 / Cord
Mixed Hardwood	32	Cords	\$ 15.30 / Cord
Mixed Oak	90	Cords	\$ 20.15 / Cord
Red Pine	147	Cords	\$ 40.90 / Cord
White Pine	293	Cords	\$ 19.85 / Cord

* The total volume is statistically estimated within plus (+) or minus (-) 17.66 percent. There are an estimated 1,182 cords on this timber sale, plus or minus 209 cords at the 95% confidence level. The estimated units are final and not subject to adjustment. Prospective bidders are urged to examine this timber and to make their own estimates of quantity and quality.

BOND AND PAYMENT SCHEDULE:

- A bond in the amount of \$1,549.00 to insure faithful performance of the conditions of the contract will be deposited by the successful bidder within 21 days of the sale award.
- Cutting in any sale or unit without the required advance payment would be considered a trespass.
- Total payment must be paid in advance or according to the following schedule :
 - Ten percent (10%) of the sale value must be paid within 21 days of the sale award.
 - The 10% down payment will be credited towards the first unit cut.
 - Payment for each of the following units must be made before cutting begins in that unit:

PAYMENT UNIT NUMBER	PERCENT OF TOTAL SALE VALUE
01	16.6%
02	5.3%
03	78.1%
- If no cutting takes place, the 10% down payment will not be refunded.
- Operations on the contract issued will terminate on 12/31/2027.

SALE STATISTICS

Volumes were calculated in cubic feet using the Michigan taper model. Cubic foot volume includes all wood inside bark for the product indicated. For display purposes, cubic feet were converted to cords and MBF using a simple conversion factor, e.g. 79 cubic feet per cord and 185 cubic feet per MBF. The cubic foot volumes are precise; the cords and MBF volumes are not. Cubic foot volume cannot be directly converted to cords or boards with precision.

SALE VOLUMES

The total estimated sale volume may not equal the sum of the species/products due to the nature of statistical calculations associated with double sampling methodology.

VOLUME			STATISTICAL RANGE IN CORDS	
TOTAL CUBIC FEET	TOTAL CORDS	PERCENT ERROR	MINIMUM	MAXIMUM
93,351	1,182	17.66%	973	1,390

VDU VOLUMES

A VDU is a Volume Determination Unit. Volumes and their associated statistics are calculated at the VDU level and summarized to the sale level. There is often a one to one relationship between a VDU and a Payment Unit, but not always, depending on the cruise design. Refer to the VDU TO PAYMENT UNIT table.

	VOLUME			RANGE IN CORDS	
VDU	TOTAL CUBIC FEET	TOTAL CORDS	PERCENT ERROR	MINIMUM	MAXIMUM
7	6,029	76	41.03%	45	108
8	67,295	852	22.72%	658	1,045
88	20,027	254	31.01%	175	332
TOTAL:	93,351	1,182		878	1,485

VDU TO PAYMENT UNIT

When a VDU is associated with more than one Payment Unit (PU), the VDU volumes are assigned to the PU based on acres of the VDU within the PU.

VDU	VDU ACRES	PU	PU ACRES
7	9.9	2	9.9
8	46.2	3	46.2
88	26.4	1	26.4
TOTAL:	82.5		82.5

DESCRIPTION OF TIMBER BY PAYMENT UNIT (PU)

PU	MARKET GROUP	PRODUCT	QUANTITY	UNIT	ACRES	ADVERTISE PRICE
1	B. T. Aspen Jack Pine Mixed Hardwood <i>Black Cherry</i> <i>Red Maple</i> Mixed Oak <i>Northern Pin Oak</i> <i>White Oak</i> Red Pine White Pine	Pulpwood	2 55 6 3 3 67 5 62 19 106	Cords Cords Cords Cords Cords Cords Cords Cords Cords Cords	26.4	\$5,155.65
2	Red Pine White Oak White Pine Jack Pine Mixed Hardwood <i>Red Maple</i> <i>Red Maple</i> Mixed Oak <i>White Oak</i> Red Pine White Pine	Sawtimber Pulpwood <i>Sawtimber</i> <i>Pulpwood</i>	2.1 2.0 0.9 3 15 2.6 10 12 12 5 29	MBF MBF MBF Cords Cords MBF Cords Cords Cords Cords Cords	9.9	\$1,643.35
3	Red Pine White Oak White Pine Jack Pine Mixed Hardwood <i>Black Cherry</i> <i>Red Maple</i> Mixed Oak <i>White Oak</i> Red Pine White Pine	Sawtimber Pulpwood	106.8 3.4 26.6 228 11 7 4 11 11 123 158	MBF MBF MBF Cords Cords Cords Cords Cords Cords Cords Cords	46.2	\$24,182.15
TOTAL:			141.8	MBF		
TOTAL:			850	Cords		

Sale Specific Conditions & Requirements

Sale Name: Mayfield Mix

Sale Number: 61-045-24 Seq#: 2

1 - Sale Area

1.2 - Boundaries

1.2.1 - Painted Boundaries (9/19)

The sale boundary and Payment Unit boundaries are marked and identified by red and yellow paint. Exterior sale boundary lines against state are marked with red paint. Interior Payment Unit boundaries are marked with yellow paint. The painted boundary line trees are not Included Timber and are to be protected. Yellow painted trees designating an interior Payment Unit boundary are not to be harvested.

2 - Timber Specifications

2.1 - Included Timber

2.1.1 - Clearcut Unit(s) with Unmerchantable Trees (6/14)

Within Payment Unit(s) 3, cut all trees that are one (1) inch or more at DBH, except do not cut green marked trees adjacent to motorcycle trail. In addition, protect all regeneration within 10 feet of motorcycle trail, using trail bed as center line.

2.1.3 - Cut Tree Marked Unit(s) (12/08)

Within Payment Unit(s) 2, all trees are designated for cutting when marked with orange paint above and below stump height, regardless of merchantability. In addition, cut all aspen, jack pine, and red maple.

2.1.4 - Designated Timber Unit(s) (6/17)

Within Payment Unit(s) 1, all trees are designated for cutting which meet minimum piece specifications in 2.2 Utilization, except do not cut any red pine, white pine, or white oak >10 inches at DBH.

2.1.11 - Description of Timber Note (2/04)

Note that mixed hardwood includes approximately 2.6 MBF red maple, 17 cords red maple, and 10 cords black cherry. Mixed oak includes approximately 5 cords northern pin oak and 85 cords of white oak.

2.2 - Utilization

2.2.2 - Chipping required (2/18)

Payment Unit 3 must be chip harvested to facilitate subsequent planting operations. The Purchaser has the option to produce sawlogs or pulpwood bolts, but the remaining portion of the trees must be chipped and hauled. Products may be produced as roundwood and forwarded to decking areas in final product length, but the tops must be left intact and skidded to the landing for chipping to minimize the amount of residual slash. The requirement to retain approximately 1/6 to 1/3 of treetops and limbs less than four (4) inches in diameter is still applicable (G. C. & R. 2.2).

2.2.3 - Stump heights (4/07)

Stump heights within Payment Unit 3 shall not exceed six (6) inches for all trees. This is to facilitate planting operations.

3 - Payments

3.4 - Damaged Timber

3.4.1 - Damaged timber (7/16)

General Condition and Requirement 3.4 Damaged Timber, defines liquidated damages for undesignated live merchantable trees which are cut or injured. In addition, extreme care should be taken to avoid damage to tree seedlings and saplings.

Within Payment Units 1 and 2, if more than 20% of the tree seedlings or saplings (1/4" to 4.5" DBH) within a specified portion of the sale area are damaged, liquidated damages will be assessed at \$100.00 per acre for all acreage within that specified portion of the Sale Area that was damaged.

No damage is acceptable to undesignated live merchantable trees. Within the Sale Area, if more than 5% of trees (> 4.5" DBH) within Payment Units 1 and 2 are damaged, liquidated damages will be assessed for all trees damaged. Rates will be in accordance with General Condition and Requirement 3.4 Damaged Timber.

4 - Transportation

4.1 - Construction

4.1.12 - No New Roads (1/12)

No new roads will be permitted in any Payment Unit. All operations are limited to existing roads. Skid trails only will be allowed.

5 - Operations

5.2 - Conduct of Operations

5.2.1 - Slash

5.2.1.8 - Slash Height (12/08)

No slash or treetops within Payment Units 1 and 2 may exceed 24 inches in height.

5.2.2 - Hazard Trees/Snags

5.2.2.1 - Den Trees (10/16)

Obvious hollow and/or den trees shall be protected and left standing unless they are a safety hazard.

5.2.3 - Operating Restrictions

5.2.3.4 - Oak Wilt Restriction, No Exceptions (1/18)

Within Payment Units 1, 2 and 3, cutting, skidding, hauling within the Sale Area and brushing of access roads to the Sale Area are not permitted during the period of April 15 to July 15. No exceptions will be granted. This is necessary to reduce the spread of oak wilt.

5.2.29 - Shrub Protection (1/20)

Do not cut or damage hawthorn, witch-hazel, or juneberry. These woody-shrub plants are highly beneficial to various wildlife species.

5.2.39 - ORV Trail/Route Protection (4/18)

The Grand Traverse Motorcycle Trail is shown on the Timber Sale Map. Do not cut trees or damage posts with trail markers. All stumps within five (5) feet of the trail must be cut flush with the ground. Maintain a 20-foot-wide slash, debris, and rut free zone daily using the trail as the centerline. Do not run equipment down the motorcycle trail. Skidding across the trail or route may only occur in locations approved by the Sale Administrator.

5.4 - Soil Protection

5.4.1 - Rutting Restriction, General (7/16)

Operations are to cease immediately if equipment and weather conditions result in rutting of roads and/or skid trails which is 12 inches or greater in depth and 50 feet in length. The Unit Manager or his/her representative may restrict hauling and/or skidding if ruts exceed the specified depth. With the Unit Manager or his/her representative's approval, the Purchaser may return to the area when the risk of rutting has decreased.

6 - Safety and Fire Prevention

6.2 - Signing

6.2.3 - Recreational Trail Posting (10/20)

The Purchaser is responsible for posting and maintaining caution signs on the Grand Traverse Motorcycle Trail prior to beginning operations. The trail must be posted at appropriate distances from the Sale Area to warn of logging activity and truck traffic at both ends of the trail. Signs must be removed when harvest operations are suspended or completed. The Purchaser will provide these signs.

Lollipop Hardwoods (61-035-24)

T27N, R13W, SEC. 18; T27N, R14W, SEC. 1; T27N, R14W, SEC. 12; T27N, R14W,

In response to the notice of sale to be held 4:00 p.m. (local time) on May 28, 2025, I am hereby submitting my sealed bid (firm offer) for the following forest products to be cut. Bids for individual species must be at or above the advertised price. All non-responsive bid forms may be rejected.

<u>PRODUCTS & SPECIES</u>	<u>ESTIMATED VOLUME*</u>	<u>ADVERTISED PRICE</u>	<u>BID PRICE/UNIT</u>
Sawtimber			
American Elm	1.1 MBF	\$ 42.00/MBF	\$ _____
Basswood	61.8 MBF	\$ 116.00/MBF	\$ _____
Beech	90.6 MBF	\$ 231.00/MBF	\$ _____
Black Cherry	20.3 MBF	\$ 183.00/MBF	\$ _____
Mixed Aspen	136.6 MBF	\$ 115.00/MBF	\$ _____
Red Maple	322.7 MBF	\$ 125.00/MBF	\$ _____
Red Oak	1.3 MBF	\$ 153.00/MBF	\$ _____
Sugar Maple	103.0 MBF	\$ 341.00/MBF	\$ _____
Pulpwood			
Mixed Aspen	291 Cords	\$ 23.90/Cord	\$ _____
Mixed Hardwood	1,137 Cords	\$ 20.90/Cord	\$ _____
Red Oak	8 Cords	\$ 27.50/Cord	\$ _____
White Pine	22 Cords	\$ 27.05/Cord	\$ _____

*The volumes are statistically estimated within plus (+) or minus (-) 11.96 percent at 95% confidence level. These estimated volumes are final and not subject to adjustment. Prospective bidders are urged to examine this timber and to make their own estimates of quantity and quality.

I understand that any or all bids may be rejected. All bids must be signed and all bid items must be bid or the bid form may be rejected. I also understand that consideration and awarding a contract will be based upon my past performance and ability to complete the contract based upon equipment and staffing subject to my control.

FEDERAL ID: ____ - ____ - ____ or SOCIAL SECURITY NUMBER: ____ - ____ - ____

Company or individual bidding: _____

Company representative's name: _____

Address: _____

City: _____ State: _____ Zip: _____

IF AVAILABLE, PLEASE PLACE THE PERSONALIZED LABEL FROM YOUR PROSPECTUS IN THE ABOVE BOX.

Individual or company representative's signature: _____ Date: _____

Phone number : _____ Email (optional): _____

**THE WINNING BIDDER MUST COMPLETE THE VERIFICATION OF WORKER'S DISABILITY COMPENSATION ACT
COMPLIANCE (ON REVERSE SIDE IF DOUBLE SIDED) WITHIN 21 DAYS OF SALE AWARD DATE**



TIMBER SALE VERIFICATION OF WORKER'S DISABILITY COMPENSATION ACT COMPLIANCE

As required by Act 317, P.A. 1969 (Worker's Compensation) and
Part 5 of Act 451 of 1994, as amended.

FOR DEPARTMENT USE ONLY

Sale Number (XX - XXX - XX - XX)

Forest Management Unit:

VERIFICATION OF WORKER'S DISABILITY COMPENSATION ACT COMPLIANCE

- This verification must be completed and submitted within 21 days of contract award and prior to the issuance of the timber sale contract.
- In addition, if boxes 2B or 2C are checked, then Notice of Exclusion or Certificate of Insurance must be submitted within twenty-one (21) days of the contract award and prior to the issuance of the timber sale contract.
- All Information must be typed or printed except for written signatures.

Please Check Appropriate Categories:

1. My business is organized as (you **must** check one of the boxes below):
 - A. ☐ Sole Proprietorship (individual)
 - B. ☐ Partnership
 - C. ☐ Corporation
2. You **must** check one of the boxes below:
 - A. ☐ I certify my business is a sole proprietorship and it has no employees but the sole proprietor. I am not subject to the Worker's Compensation Laws.
 - B. ☐ I certify my business has satisfied its obligation to the Worker's Compensation Act through the use of an approved Notice of Exclusion (BWC-337, Rev. 5/96). I will provide a copy of the Notice of Exclusion within 21 days of the contract award. (For questions or a copy of the BWC-337, please call the Worker's Compensation Bureau at 517-322-1195).
 - C. ☐ I certify my business has a Worker's Compensation Policy. I will provide an original Certificate of Insurance within twenty-one (21) days of the contract award.
3. If you have checked item 2(A) or 2(B), you **must** indicate the number of **both** full-time and part-time employees, other than yourself, including family members and active partners (if none, you must enter "0").

_____ Full-time Employees

_____ Part-time Employees

Name of Business		Federal ID (or) Social Security No.
Address		Telephone ()
City	State	ZIP

I hereby certify that the above information is true and correct. I agree to notify the Michigan DNR of any changes that occur in factors affecting my coverage during any of my present and future operations.

Signature of Owner or Authorized Representative

Title

Date

Please complete the "SEALED BID" information on the next page

South Edge of 4 (61-037-24)

T27N, R13W, SEC. 18; T27N, R14W, SEC. 13; T27N, R14W, SEC. 14; Benzie

In response to the notice of sale to be held 4:00 p.m. (local time) on May 28, 2025, I am hereby submitting my sealed bid (firm offer) for the following forest products to be cut. Bids for individual species must be at or above the advertised price. All non-responsive bid forms may be rejected.

<u>PRODUCTS & SPECIES</u>	<u>ESTIMATED VOLUME*</u>	<u>ADVERTISED PRICE</u>	<u>BID PRICE/UNIT</u>
Sawtimber			
B. T. Aspen	179.5 MBF	\$ 115.00/MBF	\$ _____
Beech	12.4 MBF	\$ 231.00/MBF	\$ _____
Black Cherry	10.2 MBF	\$ 183.00/MBF	\$ _____
Red Maple	110.4 MBF	\$ 125.00/MBF	\$ _____
Sugar Maple	11.5 MBF	\$ 341.00/MBF	\$ _____
Pulpwood			
Mixed Aspen	518 Cords	\$ 23.90/Cord	\$ _____
Mixed Hardwood	287 Cords	\$ 20.90/Cord	\$ _____

*The volumes are statistically estimated within plus (+) or minus (-) 23.35 percent at 95% confidence level. These estimated volumes are final and not subject to adjustment. Prospective bidders are urged to examine this timber and to make their own estimates of quantity and quality.

I understand that any or all bids may be rejected. All bids must be signed and all bid items must be bid or the bid form may be rejected. I also understand that consideration and awarding a contract will be based upon my past performance and ability to complete the contract based upon equipment and staffing subject to my control .

FEDERAL ID: ____ - ____ - ____ or SOCIAL SECURITY NUMBER: ____ - ____ - ____

Company or individual bidding: _____

Company representative's name: _____

Address: _____

City: _____ State: _____ Zip: _____

IF AVAILABLE, PLEASE PLACE THE PERSONALIZED LABEL FROM YOUR PROSPECTUS IN THE ABOVE BOX.

Individual or company representative's signature: _____ Date: _____

Phone number : _____ Email (optional): _____

**THE WINNING BIDDER MUST COMPLETE THE VERIFICATION OF WORKER'S DISABILITY COMPENSATION ACT
COMPLIANCE (ON REVERSE SIDE IF DOUBLE SIDED) WITHIN 21 DAYS OF SALE AWARD DATE**



TIMBER SALE VERIFICATION OF WORKER'S DISABILITY COMPENSATION ACT COMPLIANCE

As required by Act 317, P.A. 1969 (Worker's Compensation) and
Part 5 of Act 451 of 1994, as amended.

FOR DEPARTMENT USE ONLY

Sale Number (XX - XXX - XX - XX)

Forest Management Unit:

VERIFICATION OF WORKER'S DISABILITY COMPENSATION ACT COMPLIANCE

- This verification must be completed and submitted within 21 days of contract award and prior to the issuance of the timber sale contract.
- In addition, if boxes 2B or 2C are checked, then Notice of Exclusion or Certificate of Insurance must be submitted within twenty-one (21) days of the contract award and prior to the issuance of the timber sale contract.
- All Information must be typed or printed except for written signatures.

Please Check Appropriate Categories:

1. My business is organized as (you **must** check one of the boxes below):
 - A. ☐ Sole Proprietorship (individual)
 - B. ☐ Partnership
 - C. ☐ Corporation
2. You **must** check one of the boxes below:
 - A. ☐ I certify my business is a sole proprietorship and it has no employees but the sole proprietor. I am not subject to the Worker's Compensation Laws.
 - B. ☐ I certify my business has satisfied its obligation to the Worker's Compensation Act through the use of an approved Notice of Exclusion (BWC-337, Rev. 5/96). I will provide a copy of the Notice of Exclusion within 21 days of the contract award. (For questions or a copy of the BWC-337, please call the Worker's Compensation Bureau at 517-322-1195).
 - C. ☐ I certify my business has a Worker's Compensation Policy. I will provide an original Certificate of Insurance within twenty-one (21) days of the contract award.
3. If you have checked item 2(A) or 2(B), you **must** indicate the number of **both** full-time and part-time employees, other than yourself, including family members and active partners (if none, you must enter "0").

_____ Full-time Employees

_____ Part-time Employees

Name of Business		Federal ID (or) Social Security No.
Address		Telephone ()
City	State	ZIP

I hereby certify that the above information is true and correct. I agree to notify the Michigan DNR of any changes that occur in factors affecting my coverage during any of my present and future operations.

Signature of Owner or Authorized Representative

Title

Date

Please complete the "SEALED BID" information on the next page

Mayfield Mix (61-045-24)

T26N, R09W, SEC. 19; T26N, R09W, SEC. 30; Grand Traverse COUNTY

In response to the notice of sale to be held 4:00 p.m. (local time) on May 28, 2025, I am hereby submitting my sealed bid (firm offer) for the following forest products to be cut. Bids for individual species must be at or above the advertised price. All non-responsive bid forms may be rejected.

<u>PRODUCTS & SPECIES</u>	<u>ESTIMATED VOLUME*</u>	<u>ADVERTISED PRICE</u>	<u>BID PRICE/UNIT</u>
Sawtimber			
Red Pine	108.9 MBF	\$ 100.00/MBF	\$ _____
White Oak	5.4 MBF	\$ 44.00/MBF	\$ _____
White Pine	27.5 MBF	\$ 56.00/MBF	\$ _____
Pulpwood			
B. T. Aspen	2 Cords	\$ 17.55/Cord	\$ _____
Jack Pine	286 Cords	\$ 14.50/Cord	\$ _____
Mixed Hardwood	32 Cords	\$ 15.30/Cord	\$ _____
Mixed Oak	90 Cords	\$ 20.15/Cord	\$ _____
Red Pine	147 Cords	\$ 40.90/Cord	\$ _____
White Pine	293 Cords	\$ 19.85/Cord	\$ _____

*The volumes are statistically estimated within plus (+) or minus (-) 17.66 percent at 95% confidence level. These estimated volumes are final and not subject to adjustment. Prospective bidders are urged to examine this timber and to make their own estimates of quantity and quality.

I understand that any or all bids may be rejected. All bids must be signed and all bid items must be bid or the bid form may be rejected. I also understand that consideration and awarding a contract will be based upon my past performance and ability to complete the contract based upon equipment and staffing subject to my control .

FEDERAL ID: ____ - ____ - ____ or SOCIAL SECURITY NUMBER: ____ - ____ - ____

Company or individual bidding: _____

Company representative's name: _____

Address: _____

City: _____ State: _____ Zip: _____

IF AVAILABLE, PLEASE PLACE THE PERSONALIZED LABEL FROM YOUR PROSPECTUS IN THE ABOVE BOX.

Individual or company representative's signature: _____ Date: _____

Phone number : _____ Email (optional): _____

**THE WINNING BIDDER MUST COMPLETE THE VERIFICATION OF WORKER'S DISABILITY COMPENSATION ACT
COMPLIANCE (ON REVERSE SIDE IF DOUBLE SIDED) WITHIN 21 DAYS OF SALE AWARD DATE**



TIMBER SALE
VERIFICATION OF WORKER'S DISABILITY
COMPENSATION ACT COMPLIANCE

*As required by Act 317, P.A. 1969 (Worker's Compensation) and
Part 5 of Act 451 of 1994, as amended.*

FOR DEPARTMENT USE ONLY

Sale Number (XX – XXX – XX – XX)

Forest Management Unit:

VERIFICATION OF WORKER'S DISABILITY COMPENSATION ACT COMPLIANCE

- This verification must be completed and submitted within 21 days of contract award and prior to the issuance of the timber sale contract.
- In addition, if boxes 2B or 2C are checked, then Notice of Exclusion or Certificate of Insurance must be submitted within twenty-one (21) days of the contract award and prior to the issuance of the timber sale contract.
- All Information must be typed or printed except for written signatures.

Please Check Appropriate Categories:

1. My business is organized as (you **must** check one of the boxes below):
 - A. ☐ Sole Proprietorship (individual)
 - B. ☐ Partnership
 - C. ☐ Corporation
2. You **must** check one of the boxes below:
 - A. ☐ I certify my business is a sole proprietorship and it has no employees but the sole proprietor. I am not subject to the Worker's Compensation Laws.
 - B. ☐ I certify my business has satisfied its obligation to the Worker's Compensation Act through the use of an approved Notice of Exclusion (BWC-337, Rev. 5/96). I will provide a copy of the Notice of Exclusion within 21 days of the contract award. (For questions or a copy of the BWC-337, please call the Worker's Compensation Bureau at 517-322-1195).
 - C. ☐ I certify my business has a Worker's Compensation Policy. I will provide an original Certificate of Insurance within twenty-one (21) days of the contract award.
3. If you have checked item 2(A) or 2(B), you **must** indicate the number of **both** full-time and part-time employees, other than yourself, including family members and active partners (if none, you must enter "0").

_____ Full-time Employees

_____ Part-time Employees

Name of Business		Federal ID (or) Social Security No.
Address		Telephone ()
City	State	ZIP

I hereby certify that the above information is true and correct. I agree to notify the Michigan DNR of any changes that occur in factors affecting my coverage during any of my present and future operations.

Signature of Owner or Authorized Representative

Title

Date

Please complete the "SEALED BID" information on the next page