



**DEPARTMENT OF NATURAL RESOURCES
STATE OF MICHIGAN
TIMBER SALE PROSPECTUS #7732**

SCHEDULED SALE DATE AND TIME: 9:00 a.m. (local time) on December 11, 2025.

LOCATION: BARAGA MGMT UNIT, 427 US 41 NORTH, BARAGA, MI 49908.

PROSPECTUS NOTE: The bidder is advised to inspect the sale area and review the location, estimated volumes, operating costs and contract terms of proposed sales. Please be aware that some landowners may request 60 days or more notice for access across their land.

Notice is hereby given that bids will be received by the Unit Manager, BARAGA MANAGEMENT UNIT, for certain timber on the following described lands:

Bear Bait 26 (11-016-26) / T51N, R37W, SEC. 24, S1/2SW.

T51N, R37W, SEC. 25, NW,NWSW,E1/2SE.

Ontonagon County, Advertised Price \$44,188.95, 125.2 Acres, Hardwood, Sugar Maple.

GNA2 Sockeye (11-801-26) / T46N, R38W, SEC. 10, E1/2SE.

T46N, R38W, SEC. 11, SWNW,SW,SE.

T46N, R38W, SEC. 12, SW,W1/2SE.

T46N, R38W, SEC. 13, NW,SW,NWSE.

T46N, R38W, SEC. 14, NW,NE,N1/2SE,SESE.

T46N, R38W, SEC. 15, NENE.

T46N, R38W, SEC. 24, NENW.

Ontonagon County, Advertised Price \$289,155.00, 758.1 Acres, Hardwood, Aspen.

SALE NOTE: A recreation site such as a trail, pathway, or campground is within the sale area or the vicinity. Certain restrictions/specifications may be applicable including time restrictions. Access may be through private land.

Wilted Crown (12-054-26) / T41N, R32W, SEC. 11, N1/2NW,SWNW,N1/2SW,SESW.

T41N, R32W, SEC. 2, SWNW,W1/2SW.

T41N, R32W, SEC. 3, SW,SE.

T41N, R32W, SEC. 4, SWNE,N1/2SE,SWSE.

Iron County, Advertised Price \$263,523.25, 190.0 Acres, Red Oak, Aspen.

SALE NOTE: This sale was cruised during September and October, 2025. No currently dead oak was included in the cruise volume.

This sale has a short contract completion window with limited operating dates; see related specs 5.2.3.1 and 7.2.6 for details.

BID INSTRUCTIONS (VER. 10/10/2022):

1. Scheduled Bid Location, Date, and Time (2/11)

Bids must be received by the Unit Manager, BARAGA OFFICE, 427 US 41 North, Baraga, MI 49908, no later than 9:00 a.m. (local time) on December 11, 2025. For further information concerning this sale, contact Brad Carlson at 906-353-6651.

2. Bidder's Qualifications (10/22)

If all or part of a timber sale was prepared by a private contractor, the contractor and that contractor's company are not permitted to bid on the timber sale. A person must be 18 years of age or older to purchase timber. Permanent employees of the Department of Natural Resources or members of their immediate household may not bid. Former employees, in the permanent or seasonal class, may not bid until 3 months after the last day of active duty. Bids will not be accepted from individuals or companies appearing on the DNR/FRD No-Bid List. This list contains the names of purchasers who previously failed to execute a contract within 21-days or who have a history of poor performance.

3. Preparation of Sealed Bids (5/16)

Bid Forms may be completed online thru Michigan DNR Timber Sale Online Bidding (OLB) at www.michigan.gov/timberbidding or by completing the hardcopy Bid Form found in the Timber Sale Prospectus. Hardcopy Bid Forms shall be manually signed in ink. Registration in OLB is considered your 'signature' for all bids submitted thru that system. Bid prices must be entered for each species and product in the Bid Price column for all material subject to bidding and all fill-in blanks must be completed. If erasures or other changes appear on the hardcopy Bid Form, each erasure or change must be initialed by the person signing the bid.

4. Submission of Sealed Bids (5/16)

Bid forms may be obtained from the Unit Manager or thru OLB. Bids may be submitted hardcopy or thru OLB. All hardcopy bids must be submitted on the bid form and in an envelope clearly identified as described in this section. NOTE: Only one bid form per bid envelope. Sealed bids must be submitted to the Unit office designated in the prospectus and must be submitted at or prior to the time established in the prospectus. The envelope should show on the outside (a) the sale name or number and (b) the date and time of bid opening, as shown in the prospectus. Bids received after the time specified in the sale prospectus are late bids and will be rejected.

It is possible for a bidder to submit multiple bids on a single sale. For example, a bid may be submitted hardcopy and a bid may be submitted thru OLB. Or, two bidders from the same company could both submit bids on the same sale. If this were to happen, the State would accept all bids received and award the contract accordingly. All bidding and contractual requirements would apply to all bids received.

5. Public Opening of Sealed Bids (7/16)

If conditions permit, the sealed bids will be publicly opened and posted at the time and place set in the prospectus.

If a bidder, present at a bid opening, has submitted bids on more than one sale, that bidder may withdraw their unopened bid envelopes or announce the withdrawal of their online bid after being declared the successful bidder on one sale.

6. Award of Contract (1/11)

Award of the contract will be made to the Bidder whose bid, conforming to the prospectus, is most advantageous to the State of Michigan on the basis of total value at rates bid for the estimated quantities. The State reserves the right to reject any bid or waive any minor irregularity in bids received. A written award mailed (or otherwise furnished) to the successful Bidder shall be deemed to result in a binding contract without further action by either party.

7. Down Payment (1/11)

The Bidder to whom award is made must make a down payment within 21 days of the sale award. The amount of the down payment will be calculated as shown in the Bond and Payment Schedule of this prospectus. Only cash may be used to meet this requirement.

8. Performance Security (1/11)

As guarantee of faithful performance, a cash bond, certificate of deposit, surety bond or irrevocable letter of credit (LOC) is required within 21 days of the sale award. The amount of the performance security is shown in the Bond and

Payment Schedule of this prospectus. If an LOC or surety is used, the coverage must extend for at least 6 months beyond the contract expiration.

9. Worker's Compensation (10/22)

Purchaser shall obtain worker's compensation insurance to cover claims under Michigan's Worker's Disability Compensation Act of 1969 or similar employee benefit act of any other state applicable to an employee. Verification of Worker's Disability Compensation Act Compliance must be completed and submitted within 21 days of contract award and prior to the issuance of the timber sale contract. In addition, if applicable, Notice of Exclusion or Certificate of Insurance must also be submitted.

10. Timber Sale Contract (10/22)

Additional conditions and requirements common to all timber sales are listed on the timber sale contract (R4031) and are available on line at www.michigan.gov/timber. Contact the Unit Manager for additional information or a sample contract. Within 21 days of the date of the award letter, the bidder must sign the contract and provide the required down payment, performance security, and verification of worker's disability compensation. The down payment and performance security shall be in accordance with the provisions of the timber sale contract, in the sums stated in this prospectus. If these actions are not taken, then the Bidder, the Bidder's corporation, and the corporation's principals may not be permitted to bid on State timber sales for a period of 3 months after the first offense, 6 months after the second offense, and 1 year after the third offense. An offense will only be counted against the Bidder for 5 years. In addition, the Bidder certifies that if awarded this contract, the Bidder will complete the timber sale contract in accordance with its terms and any modifications thereof including requirements to purchase, cut, and remove the included timber by the expiration date.

Payment Unit values in the State Forest Timber Sale Contract are calculated based on the advertised value of the Payment Unit as a percentage of the total advertised value of the contract. The advertised value of each Payment Unit is given in the Description of Timber by Payment Unit table on the Timber Sale Information page. For example, if the value of Payment Unit 1 is advertised as \$1,500 and the total Timber Sale value is advertised as \$10,000, the contract price for Payment Unit 1 will be 15% of the total bid price ($\$1,500/\$10,000 * 100$).

11. Disclaimer of Estimates and Bidder's Warranty of Inspection (10/22)

Before submitting this bid, the Bidder is advised and cautioned to inspect the sale area, review the requirements of the sale contract, and take other steps as may be reasonably necessary to ascertain the location, estimated volumes, construction estimates, and operating costs of the proposed sale. Failure to do so will not relieve the Bidder from responsibility for completing the contract.

The Bidder warrants that this bid is submitted solely on the basis of the Bidder's examination and inspection of the quality and quantity of the timber offered for sale and the Bidder's opinion of the value thereof and the costs of recovery. No reliance should be placed on the State of Michigan's estimates of timber quality, quantity or costs of recovery. Bidder further acknowledges that the State of Michigan: (i) expressly disclaims any warranty of fitness of timber for any purpose; (ii) offers this timber as is without any warranty of quality (merchantability) or quantity and (iii) expressly disclaims any warranty as to the quantity or quality of timber sold.

12. Certification and Chain-of-Custody (10/22)

Unless otherwise indicated in the contract under section 7 – Other Conditions of the Sale Specific Conditions & Requirements, the area encompassed by this timber sale is certified to the standards of the Forest Stewardship Council (FSC) - Certificate #SCS-FM/COC-00090N and the Sustainable Forestry Initiative (SFI) - Certificate #NSF-SFIS-5Y031-SF5. Forest products from this sale may be delivered to the mill as "FSC 100% and / or SFI certified" as long as the contractor hauling the forest products is chain-of-custody (COC) certified or covered under a COC certificate from the destination mill. The purchaser is responsible for maintaining COC after leaving the sale area.

13. Good Neighbor Authority (GNA) Requirements (10/22)

If the name of this timber sales contains the acronym GNA, it is authorized by the Good Neighbor Authority (GNA) and covered by various agreements between the U.S. Forest Service and the State. The timber sale occurs on federal land and the following conditions apply:

GNA contracts on US Forest Service land will not be awarded to purchasers on the Federal list of excluded parties. The System for Award Management (SAM) will be checked for active excluded parties prior to award of contract. In

addition, the Bidder to whom award is made must complete an Assurance Regarding Felony Conviction or Tax Delinquent Status for Corporate Applicants (AD-3031).

14. Good Neighbor Authority (GNA) Requirements, con't (10/22)

Bidder certifies, by signing this bid form, that to the best of Bidder's knowledge that the following representations are accurate and complete.

- a. That the Bidder and its principals are not presently debarred, suspended, proposed for debarment, declared ineligible, or voluntary excluded from timber sales (covered transactions) by any Federal department or agency.
- b. That the Bidder and its principals have not within a 3-year period preceding this bid been convicted of or had a civil judgment rendered against them for commission of fraud or a criminal offense in connection with obtaining , attempting to obtain, or performing a public (Federal, State, or local) transaction or contract under a public transaction; violation of Federal or State antitrust statutes or commission of embezzlement, theft, forgery, bribery, falsification or destruction of records, making false statements, or receiving stolen property.
- c. That the Bidder and its principals are not presently indicted for or otherwise criminally or civilly charged by a governmental entity (Federal, State, or local) with commission of any of the offenses enumerated in paragraph b of this certification.
- d. That the Bidder and its principals have not within a 3-year period preceding this bid had one or more public transactions (Federal, State, or local) terminated for breach or default of a timber or forest product contract.

Bidders that cannot certify this requirement, in whole or in part, shall submit an explanation with their bid.

Scott Bowen
Director

TIMBER SALE INFORMATION

Bear Bait 26 (11-016-26)

T51N, R37W, SEC. 24; T51N, R37W, SEC. 25.
Ontonagon County (Advertised Price \$44,188.95)

A timber sale contract for this lump sum, sealed bid timber sale will be awarded to the responsible bidder offering the highest sealed bid price. All units of volume listed below were estimated using the Inventory Manager computer program and the new Michigan taper model. Bids must be at or above the following advertised price for each product and species:

<u>PRODUCTS & SPECIES</u>	<u>ESTIMATED UNITS*</u>	<u>ADVERTISED PRICE</u>
Sawtimber		
Basswood	2.2 MBF	\$ 56.00 / MBF
Red Maple	85.7 MBF	\$ 176.00 / MBF
Sugar Maple	49.9 MBF	\$ 304.00 / MBF
Yellow Birch	4.5 MBF	\$ 130.00 / MBF
Pulpwood		
Balsam Fir	12 Cords	\$ 5.25 / Cord
Mixed Hardwood	1,049 Cords	\$ 12.55 / Cord

* The total volume is statistically estimated within plus (+) or minus (-) 15.74 percent. There are an estimated 1,395 cords on this timber sale, plus or minus 220 cords at the 95% confidence level. The estimated units are final and not subject to adjustment. Prospective bidders are urged to examine this timber and to make their own estimates of quantity and quality.

BOND AND PAYMENT SCHEDULE:

1. A bond in the amount of \$3,000.00 to insure faithful performance of the conditions of the contract will be deposited by the successful bidder within 21 days of the sale award.
2. Cutting in any sale or unit without the required advance payment would be considered a trespass.
3. Total payment must be paid in advance or according to the following schedule :
 - (a) Ten percent (10%) of the sale value must be paid within 21 days of the sale award.
 - (b) The 10% down payment will be credited towards the first unit cut.
 - (c) Payment for each of the following units must be made before cutting begins in that unit:

<u>PAYMENT UNIT NUMBER</u>	<u>PERCENT OF TOTAL SALE VALUE</u>
01	5.1%
02	38.4%
03	29.5%
04	27.0%

4. If no cutting takes place, the 10% down payment will not be refunded.
5. Operations on the contract issued will terminate on 06/30/2029.

SALE STATISTICS

Volumes were calculated in cubic feet using the Michigan taper model. Cubic foot volume includes all wood inside bark for the product indicated. For display purposes, cubic feet were converted to cords and MBF using a simple conversion factor, e.g. 79 cubic feet per cord and 185 cubic feet per MBF. The cubic foot volumes are precise; the cords and MBF volumes are not. Cubic foot volume cannot be directly converted to cords or boards with precision.

SALE VOLUMES

The total estimated sale volume may not equal the sum of the species/products due to the nature of statistical calculations associated with double sampling methodology.

<u>VOLUME</u>			<u>STATISTICAL RANGE IN CORDS</u>	
<u>TOTAL CUBIC FEET</u>	<u>TOTAL CORDS</u>	<u>PERCENT ERROR</u>	<u>MINIMUM</u>	<u>MAXIMUM</u>
110,194	1,395	15.74%	1,175	1,615

VDU VOLUMES

A VDU is a Volume Determination Unit. Volumes and their associated statistics are calculated at the VDU level and summarized to the sale level. There is often a one to one relationship between a VDU and a Payment Unit, but not always, depending on the cruise design. Refer to the VDU TO PAYMENT UNIT table.

	VOLUME			RANGE IN CORDS	
VDU	TOTAL CUBIC FEET	TOTAL CORDS	PERCENT ERROR	MINIMUM	MAXIMUM
2	37,738	478	27.21%	348	608
19	35,173	445	33.81%	295	596
39	37,283	472	23.55%	361	583
TOTAL:	110,194	1,395		1,003	1,787

VDU TO PAYMENT UNIT

When a VDU is associated with more than one Payment Unit (PU), the VDU volumes are assigned to the PU based on acres of the VDU within the PU.

VDU	VDU ACRES	PU	PU ACRES
TOTAL:			

DESCRIPTION OF TIMBER BY PAYMENT UNIT (PU)

PU	MARKET GROUP	PRODUCT	QUANTITY	UNIT	ACRES	ADVERTISE PRICE
1	Red Maple	Sawtimber	3.6	MBF	6.5	\$2,256.90
	Sugar Maple		3.6	MBF		
	Yellow Birch		0.4	MBF		
	Mixed Hardwood	Pulpwood	38	Cords		
	Black Cherry		1	Cords		
	Red Maple		16	Cords		
	Sugar Maple		20	Cords		
	Yellow Birch		1	Cords		
2	Red Maple	Sawtimber	27.2	MBF	48.9	\$16,969.20
	Sugar Maple		26.9	MBF		
	Yellow Birch		3.0	MBF		
	Mixed Hardwood	Pulpwood	288	Cords		
	Black Cherry		4	Cords		
	Red Maple		120	Cords		
	Sugar Maple		154	Cords		
	Yellow Birch		10	Cords		
3	Basswood	Sawtimber	2.2	MBF	47.3	\$13,022.30
	Red Maple		20.0	MBF		
	Sugar Maple		14.9	MBF		
	Yellow Birch		1.1	MBF		
	Balsam Fir	Pulpwood	12	Cords		
	Mixed Hardwood		370	Cords		
	Basswood		2	Cords		
	Red Maple		218	Cords		
	Sugar Maple		135	Cords		
	Yellow Birch		15	Cords		
4	Red Maple	Sawtimber	34.9	MBF	22.5	\$11,940.55
	Sugar Maple		4.5	MBF		
	Mixed Hardwood	Pulpwood	353	Cords		
	Red Maple		298	Cords		
	Sugar Maple		55	Cords		
TOTAL:			142.3	MBF		
TOTAL:			1,061	Cords		

Sale Specific Conditions & Requirements

Sale Name: Bear Bait 26

Sale Number: 11-016-26 Seq#: 1

1 - Sale Area

1.2 - Boundaries

1.2.1 - Painted Boundaries (9/19)

The sale boundary and Payment Unit boundaries are marked and identified by blue and red paint. Exterior sale boundary lines against private property are marked with blue paint. Exterior sale boundary lines against state are marked with red paint. The painted boundary line trees are not Included Timber and are to be protected unless marked with orange paint.

2 - Timber Specifications

2.1 - Included Timber

2.1.3 - Cut Tree Marked Unit(s) (12/08)

Within Payment Unit(s) 1, 2, 3, and 4, all trees are designated for cutting when marked with orange paint above and below stump height, regardless of merchantability.

2.1.11 - Description of Timber Note (2/04)

Note that the volumes for this sale are from a cruise that was done in June 2022.

2.2 - Utilization

2.2.3 - Stump Heights (12/24)

Stump heights within the Sale Area shall not exceed 12 inches for trees greater than 10 inches at DBH and four (4) inches for trees smaller than 10 inches at DBH. A written waiver of this requirement may be obtained if wet summer weather makes winter logging necessary.

2.2.4 - Skidding Length (12/24)

Skidding of lengths over 17 feet is permissible as long as the Sale Administrator approves the method and machinery used. If at any point damage exceeds specification 3.4.1, all of the remaining wood must be skid in lengths less than 17 feet.

2.2.5 - Limbed Tree Skidding (12/24)

The skidding of whole trees or tree segments with limbs attached is prohibited, unless approved by the Unit Manager or his/her representative.

2.2.7 - Uncut Designated Trees (2/04)

Liquidated damages of \$10.00 per tree will be assessed for every marked tree not cut.

2.2.8 - Utilization and Removal (12/24)

All products meeting standards set forth in General Condition and Requirement 2.2 Utilization must be removed from the Sale Area. This is because excess woody debris inhibits regeneration.

2.2.11 - Chipping Restriction (9/14)

If chipping occurs on this sale, then no woody debris present on the ground at the start of the sale may be chipped. In addition, brush or chips may not be stored or stockpiled on-site for more than 30 days.

3 - Payments

3.4 - Damaged Timber

3.4.1 - Damaged Timber (12/24)

General Condition and Requirement 3.4 Damaged Timber, defines liquidated damages for undesignated live merchantable trees which are cut or injured. In addition, extreme care should be taken to avoid damage to tree seedlings and saplings.

No damage is acceptable to undesignated live merchantable trees. Within the Sale Area, if more than 5% of trees (> 4.5" DBH) within a specified area of the sale are damaged, liquidated damages will be assessed for all trees damaged. Rates will be in accordance with General Condition and Requirement 3.4 Damaged Timber. Note that: trees within 10 feet of ruts exceeding 12" will be considered damage due to damage caused to the tree roots (see spec 5.4.1).

4 - Transportation

4.1 - Construction

4.1.1 - Stream Crossings, General (1/25)

All stream crossing structures will be temporary and, therefore, shall be provided by the Purchaser and must be removed upon completion of the sale. All permits for stream crossings will be provided by the DNR for crossings on state owned land.

4.1.3 - Slash and Earthen Piles (8/04)

Piles or windrows of earth along roads and landings that have been widened or constructed shall be leveled. Slash from road maintenance or construction, including stumps, shall be dispersed throughout the sale.

4.1.4 - Timber Removed for Construction (3/23)

Trees cut or damaged in the process of pre-approved road, landing, or skid trail construction will be decked in an area separate from other Designated Timber and not removed until measured by the Sale Administrator. Payment will be made at contract prices or average prices, if not on the contract.

4.1.5 - Culverts (5/14)

Roads may require the installation of culverts for cross drainage or at natural drainage-ways. If culverts are needed in these locations, their placement will be specified by the Sale Administrator, and they shall be installed prior to hauling. The culverts shall be new, corrugated metal or plastic gauge. Culverts will be a minimum of 12 inches in diameter and 24 feet in length. If culverts are removed, fill shall be removed from wetland soils as specified. Soils shall be maintained and left in a non-erodible condition, with water bars, seed, fertilizer, mulch, and slash installed as directed by the Sale Administrator and as specified in the BMP manual. Stream crossing permits, if needed, will be obtained by the DNR.

4.1.6 - Road Construction (4/24)

Construction of new roads or improvements of existing roads shall be done in such a way as to minimize the environmental and visual impacts. Merchantable trees shall be cut and utilized unless otherwise directed. Non-merchantable trees shall be severed and laid flat on the ground. Slash shall be scattered, and not left in windrows and kept a minimum of 10 feet back from the road edge. Stumps shall be set upright, not left on edge, and be moved at least 10 feet away from the road edge. Disturbed soil shall be feathered into the woods and not left in berms or windrows.

4.1.7 - Road Closure (10/11)

All new roads built into the sale must be blocked to vehicle traffic upon completion of the sale. Overgrown roads that are reopened shall be considered new roads. In general, this will require constructing a four (4') foot high berm of stumps and logs covered with earth. Contact the Sale Administrator for specific details of design and placement.

4.1.8 - Road Work (1) (8/07)

The following road work is required if sale is logged with snow on the ground. The Purchaser will plow the access road into the sale, such that there are pull-offs and/or turn outs sufficient for a passenger vehicle pulling a trailer to pull off the road to allow passage of other vehicles. These pull-offs shall be along the road at a distance of no greater than a quarter of a mile.

4.1.11 - Permits (2/12)

The Purchaser will secure any necessary permits that may be required. The DNR will secure any stream crossing permits that may be required, please notify the DNR 90 days prior to working on any crossing that requires a permit.

4.2 - Maintenance

4.2.2 - Fill Material (4/07)

To maintain roads, fill material may be needed in areas where "holes" exist or may be expected to develop. This fill material should be placed before trucking begins.

4.2.4 - Grading (10/16)

For completion of the sale, state forest roads must be graded. In general, this will require a road grader or bulldozer to shape up the roads after forest products have been hauled off site. This includes cleaning of drainage areas, grading, crowning and filling with gravel, if necessary. The grading equipment to be used must be approved by the Unit Manager or his/her representative.

4.2.5 - Two Wheel Drive Condition (2/04)

All existing trail roads on and adjacent to the Sale Area must be passable by two-wheel drive traffic for the duration of the

sale.

5 - Operations

5.1 - Notification

5.1.1 - Pre-sale Conference (10/16)

A pre-sale conference between the Purchaser and Sale Administrator is required prior to beginning any operations, to determine landing and road locations. The Unit Manager or his/her representative must be contacted at least 10 days in advance to schedule the conference.

5.1.4 - Post-Sale Conference (10/16)

A post-sale conference on site between the Purchaser and sale administrator is required five (5) days prior to the completion of active logging operations to determine clean-up and repair of landings, road edges, and the fulfillment of other contract specifications.

5.2 - Conduct of Operations

5.2.1 - Slash

5.2.1.1 - Slash Within Sale Area (9/16)

No trees are to be felled outside the Sale Area, and all slash is to be kept at least 10 feet back from the red paint line. If sale boundary lines are along a public road or highway, then slash must be removed 50' from these lines per General Condition & Requirement 5.2.1.

5.2.1.11 - Slash for Reforestation (3/21)

To facilitate reforestation, the Sale Area shall be left with slash evenly distributed. Bunched tops within the cutting area shall be broken up and scattered. Processing sites shall not be left with a compacted layer of slash; tops from these sites shall be hauled back into the cut area and scattered.

5.2.2 - Hazard Trees/Snags

5.2.2.1 - Den Trees (10/16)

Obvious hollow and/or den trees shall be protected and left standing unless they are a safety hazard.

5.2.3 - Operating Restrictions

5.2.3.2 - Operating Restrictions (9/11)

Within Payment Unit(s) unless changed by written agreement, all clean-up activities must be completed by June 30 for all areas that were harvested during the previous harvest season. This restriction is to allow the clean-up areas to revegetate before the dry season.

5.2.3.3 - Bark Slippage Restriction (3/09)

Within Payment Unit(s) 1-4, unless changed by written agreement, cutting and skidding are not permitted during the period of April 15 to July 15. This restriction is because of bark slippage.

5.2.17 - Timber Mats and Interlocking Composite Mats (5/23)

Some roads or skid trails may require extra protection such as that afforded by timber mats, interlocking composite mats, or another approved system. If available, mats may be borrowed from the DNR. A Timber Sale Contract Amendment will be used to document the Purchaser's use of the DNR's mats. Contact the Sale Administrator regarding availability and pick-up. Timber mats are available from various field offices. Composite mats are only available from the Grayling field office and the Marquette ICC. The Purchaser is responsible for picking up and hauling the mats to and from the site. The composite mats will require DNR staff onsite for installation and removal. Contact the Sale Administrator to schedule at least 30 days before desired install/removal date. All mats must be cleaned prior to drop off. This may include, but is not limited to, power washing and brushing to remove mud and debris. A charge of \$700.00 per timber mat and \$2,000.00 per composite mat will be assessed for all damaged or non-returned mats. Damage for the crane/timber mats is defined as three or more broken cants. Damage for the composite mats is defined as cracked or broken mats.

5.2.22 - Operating Caution

5.2.22.1 - Operating Caution (6/11)

It is recommended, but not required, that within Payment Unit(s) 4, cutting, skidding, and hauling occur during frozen

winter conditions. The reason for the recommendation is to prevent soil erosion and rutting.

5.2.30 - Landing/Road Topsoil Protection (1/25)

Topsoil on landings and new roads must be removed, stockpiled, and saved. Upon completion of the timber sale, soil must be evenly distributed back over the area for revegetation. In addition, the area must be seeded and mulched per Sale Administrator's instructions.

5.2.32 - Decking/Landing Restoration (9/13)

All decking and landing areas must have the surface area restored to a condition equal to or better than before. This is to ensure the proper regeneration of the stand. Wood debris, chips and "cookies" from trimmings must be removed or scattered away from landing and loading areas and may not be windrowed on the edge.

5.2.38 - No Decking Against Live Trees (2/04)

Cut products may not be decked against unmarked or designated leave trees.

5.4 - Soil Protection

5.4.1 - Rutting Restriction, General (7/16)

Operations are to cease immediately if equipment and weather conditions result in rutting of roads and/or skid trails which is 12 inches or greater in depth and 50 feet in length. The Unit Manager or his/her representative may restrict hauling and/or skidding if ruts exceed the specified depth. With the Unit Manager or his/her representative's approval, the Purchaser may return to the area when the risk of rutting has decreased. Note: Trees within 10 feet of ruts exceeding 12" will be considered damage due to damage caused to the tree roots and will be billed in accordance with 3.4 Damaged Timber.

5.4.2 - Skid Trails (2/04)

Skid trails up and down slopes should be avoided. If, however, this is unavoidable, these trails will be left in a non-erodible condition using water bars, logs, and slash. Placing of slash on these skid trails while logging is ongoing may alleviate need for any further action. At the direction of the Sale Administrator, seed, fertilizer, and mulch may also be required.

5.4.3 - Erosion Control (12/08)

Skid trails or haul roads may require erosion control structures or berms per direction of the Unit Manager or his/her representative.

5.8 - Protection of Endangered Species

5.8.3 - Red-shouldered Hawk or Goshawk (1) (1/25)

In the event that an active red shoulder hawk or goshawk nest is found, the contract may be amended to protect the nest site until the nest is determined to be inactive. The value of the trees in this excluded area will be refunded or credited to the Purchaser. The nest will be buffered with a five-chain radius (eight acre) protection area, centered on the nest tree, in which there will be no cutting or new roads constructed. Avoid human disturbance, including loading and skidding, in the protection area.

An additional zone of five chains (ten chains centered on the active nest tree) will be established in which there is no management activity from April 1 to July 30. Limit biomass harvesting and chipping operations within this ten-chain zone, retain the maximum one-third of residues per the Woody Biomass Harvesting Guidelines (Michigan DNR 2010). Nests determined to be inactive will be protected with a one-chain no-harvest buffer.

5.8.5 - Protection of Raptor Nests (3/13)

All trees with raptor nests will be protected if found during harvesting operations. Notification will be made to the Unit Manager or his/her representative who will notify the Wildlife Biologist so an onsite evaluation and recommendation can be made, if necessary.

6 - Safety and Fire Prevention

6.2 - Signing

6.2.1 - Road Posting (10/20)

The Purchaser is responsible for posting and maintaining caution signs on M-38 prior to beginning operations. The road must be posted at appropriate distances from the trucking activity to warn of logging activity and truck traffic. Signs must be removed when harvest operations are suspended or completed. The Purchaser will provide these signs.



TIMBER SALE MAP

This information provided by authority of Part 525, 1994 PA 451, as amended.

Sale Number

11-016-26

Date

09/05/2025

Forest Management Unit

Baraga Mgt Unit

County

Ontonagon

Mapped By: Ryan Mattila

Cruised By: Baraga Staff

Scale

1:15,840

Page

1

Of

1

Township
51N

Range
37W

Section(s) and
Subdivision(s) Sec. 24 S1/2SW; Sec. 25 NW,NWSW,E1/2SE;

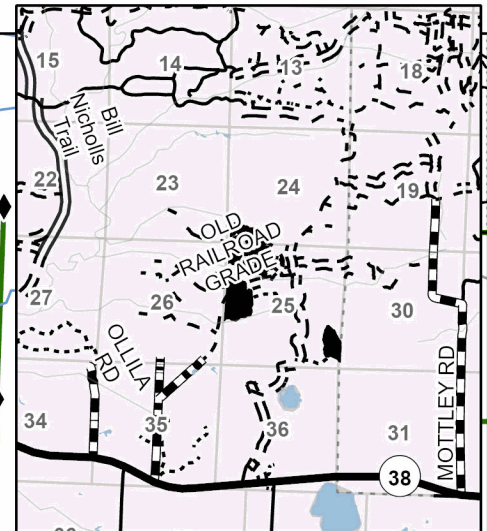
Cover Type

A = Aspen	J = Jack Pine	O = Oak	U = Upland Brush
B = Paper Birch	K = Rock	P = Lowland Poplar	UM = Upland Mix Forest
C = Cedar	L = Lowland Brush	Q = Mixed Swamp Conifer	V = Bog or Marsh
D = Treed Bog	LM = Lowland Mix Forest	R = Red Pine	W = White Pine
E = Swamp Hardwoods	M = Maple, Beech, Birch	S = Black Spruce	X = Non Stocked
F = Spruce/Fir	MC = Mixed Conifer	T = Tamarack	Y = Sand
G = Grass	MD = Mixed Deciduous	Z = Water	
H = Hemlock	N = Marsh		

Density

0 = Non Stocked	5 = Pole Timber Medium
1 = Seedling Sapling Poor	6 = Pole Timber Well
2 = Seedling Sapling Medium	7 = Saw Timber Poor
3 = Seedling Sapling Well	8 = Saw Timber Medium
4 = Pole Timber Poor	9 = Saw Timber Well

Locator Map 1:100,000



Bear Bait 26					
Ontonagon - Compartment 64					
UNIT	1	2	3	4	TOTALS
ACRES	6.5	48.9	47.3	22.5	125.2
Sawlogs MBF					
Basswood	0.0	0.0	2.2	0.0	2.2
Red Maple	3.6	27.2	20.0	34.9	85.7
Sugar Maple	3.6	26.9	14.9	4.5	49.9
Yellow Birch	0.4	3.0	1.1	0.0	4.5
TOTAL	7.6	57.1	38.2	39.4	142.3
Pulpwood CORDS					
Balsam Fir	0	0	12	0	12
Mixed Hwd	38	288	370	353	1049
TOTAL	38	288	382	353	1061

PVT

PVT

PVT

Use QR Code to
open folder to get
Tree List



Use QR Code to
open Map in App



Legend

	Against State (Red)
	Private Line (Blue)
	Lakes and Rivers
	Nearby Timber Sale
	Perennial River
	Survey Grade Corner
	Non-DNR Government Road
	Secondary Forest Road
	Forest Access Route
	Administrative Access Only
	Private Road
	DNR Road Labels

0 0.25 0.5 1 Miles



TIMBER SALE INFORMATION

GNA2 Sockeye (11-801-26)

T46N, R38W, SEC. 10; T46N, R38W, SEC. 11; T46N, R38W, SEC. 12; T46N, R38W, SEC. 13; T46N, R38W, SEC. 14; T46N, R38W, SEC. 15; T46N, R38W, SEC. 24.

SALE NOTE: A recreation site such as a trail, pathway, or campground is within the sale area or the vicinity. Certain restrictions/specifications may be applicable including time restrictions. Access may be through private land.

A timber sale contract for this lump sum, sealed bid timber sale will be awarded to the responsible bidder offering the highest sealed bid price. All units of volume listed below were estimated using the Inventory Manager computer program and the new Michigan taper model. Bids must be at or above the following advertised price for each product and species:

<u>PRODUCTS & SPECIES</u>	<u>ESTIMATED UNITS*</u>		<u>ADVERTISED PRICE</u>
Sawtimber			
Basswood	216.6	MBF	\$ 56.00 / MBF
Black Cherry	1.3	MBF	\$ 39.00 / MBF
Paper Birch	5.4	MBF	\$ 83.00 / MBF
Red Maple	78.0	MBF	\$ 176.00 / MBF
Red Pine	61.4	MBF	\$ 114.00 / MBF
Sugar Maple	446.7	MBF	\$ 304.00 / MBF
Yellow Birch	16.7	MBF	\$ 130.00 / MBF
Pulpwood			
Balsam Fir	154	Cords	\$ 5.25 / Cord
Basswood	466	Cords	\$ 5.20 / Cord
Mixed Aspen	1,008	Cords	\$ 18.60 / Cord
Mixed Hardwood	7,159	Cords	\$ 12.55 / Cord
Mixed Spruce	88	Cords	\$ 11.10 / Cord
Red Pine	67	Cords	\$ 75.05 / Cord

* The total volume is statistically estimated within plus (+) or minus (-) 6.52 percent. There are an estimated 10,877 cords on this timber sale, plus or minus 710 cords at the 95% confidence level. The estimated units are final and not subject to adjustment. Prospective bidders are urged to examine this timber and to make their own estimates of quantity and quality.

BOND AND PAYMENT SCHEDULE:

1. A bond in the amount of \$14,458.00 to insure faithful performance of the conditions of the contract will be deposited by the successful bidder within 21 days of the sale award.
2. Cutting in any sale or unit without the required advance payment would be considered a trespass.
3. Total payment must be paid in advance or according to the following schedule :
 - (a) Ten percent (10%) of the sale value must be paid within 21 days of the sale award.
 - (b) The 10% down payment will be credited towards the first unit cut.
 - (c) Payment for each of the following units must be made before cutting begins in that unit:

<u>PAYMENT UNIT NUMBER</u>	<u>PERCENT OF TOTAL SALE VALUE</u>
01	4.2%
02	8.2%
03	7.9%
04	7.9%
05	3.7%
06	5.2%
07	10.5%
08	8.2%
09	7.9%
10	9.2%
11	4.1%
12	5.6%
13	6.5%
14	6.7%
15	4.2%

4. If no cutting takes place, the 10% down payment will not be refunded.
5. Operations on the contract issued will terminate on 06/30/2029.

SALE STATISTICS

Volumes were calculated in cubic feet using the Michigan taper model. Cubic foot volume includes all wood inside bark for the product indicated. For display purposes, cubic feet were converted to cords and MBF using a simple conversion factor, e.g. 79 cubic feet per cord and 185 cubic feet per MBF. The cubic foot volumes are precise; the cords and MBF volumes are not. Cubic foot volume cannot be directly converted to cords or boards with precision.

SALE VOLUMES

The total estimated sale volume may not equal the sum of the species/products due to the nature of statistical calculations associated with double sampling methodology.

VOLUME			STATISTICAL RANGE IN CORDS	
TOTAL CUBIC FEET	TOTAL CORDS	PERCENT ERROR	MINIMUM	MAXIMUM
859,311	10,877	6.52%	10,167	11,587

VDU VOLUMES

A VDU is a Volume Determination Unit. Volumes and their associated statistics are calculated at the VDU level and summarized to the sale level. There is often a one to one relationship between a VDU and a Payment Unit, but not always, depending on the cruise design. Refer to the VDU TO PAYMENT UNIT table.

	VOLUME			RANGE IN CORDS	
VDU	TOTAL CUBIC FEET	TOTAL CORDS	PERCENT ERROR	MINIMUM	MAXIMUM
4	547,291	6,928	8.30%	6,352	7,503
17	17,624	223	36.44%	142	304
22	294,396	3,727	11.03%	3,316	4,137
TOTAL:	859,311	10,877		9,810	11,945

VDU TO PAYMENT UNIT

When a VDU is associated with more than one Payment Unit (PU), the VDU volumes are assigned to the PU based on acres of the VDU within the PU.

VDU	VDU ACRES	PU	PU ACRES
4	469.3	1	29.2
		2	56.9
		3	54.9
		4	54.8
		5	25.7
		7	72.6
		8	56.7
		9	54.7
		10	63.8
		15	19.6
17	19.6	6	50.4
22	269.2	11	39.1
		12	53.4
		13	62.4
		14	63.9
TOTAL:	758.1		758.1

DESCRIPTION OF TIMBER BY PAYMENT UNIT (PU)

PU	MARKET GROUP	PRODUCT	QUANTITY	UNIT	ACRES	ADVERTISE PRICE
1	Basswood	Sawtimber	9.7	MBF	29.2	\$12,181.35
	Black Cherry		0.1	MBF		
	Paper Birch		0.1	MBF		
	Red Maple		3.6	MBF		
	Sugar Maple		21.6	MBF		
	Yellow Birch		0.9	MBF		
	Balsam Fir	Pulpwood	4	Cords		
	Basswood		22	Cords		
	Mixed Aspen		27	Cords		
	<i>B. T. Aspen</i>		1	<i>Cords</i>		
	<i>Quaking Aspen</i>		26	<i>Cords</i>		
	Mixed Hardwood		289	Cords		
	<i>Ironwood</i>		1	<i>Cords</i>		
	<i>Paper Birch</i>		2	<i>Cords</i>		
	<i>Red Maple</i>		66	<i>Cords</i>		
	<i>Sugar Maple</i>		214	<i>Cords</i>		
	<i>Yellow Birch</i>		6	<i>Cords</i>		
	Mixed Spruce		4	Cords		
	<i>White Spruce</i>		4	<i>Cords</i>		
2	Basswood	Sawtimber	18.9	MBF	56.9	\$23,771.50
	Black Cherry		0.2	MBF		
	Paper Birch		0.2	MBF		
	Red Maple		7.1	MBF		
	Sugar Maple		42.1	MBF		
	Yellow Birch		1.8	MBF		
	Balsam Fir	Pulpwood	8	Cords		
	Basswood		42	Cords		
	Mixed Aspen		54	Cords		
	<i>B. T. Aspen</i>		2	<i>Cords</i>		
	<i>Quaking Aspen</i>		52	<i>Cords</i>		
	Mixed Hardwood		562	Cords		
	<i>Ironwood</i>		1	<i>Cords</i>		
	<i>Paper Birch</i>		4	<i>Cords</i>		
	<i>Red Maple</i>		129	<i>Cords</i>		
	<i>Sugar Maple</i>		417	<i>Cords</i>		
	<i>Yellow Birch</i>		11	<i>Cords</i>		
	Mixed Spruce		8	Cords		
	<i>White Spruce</i>		8	<i>Cords</i>		
3	Basswood	Sawtimber	18.2	MBF	54.9	\$22,917.10
	Black Cherry		0.2	MBF		
	Paper Birch		0.2	MBF		
	Red Maple		6.8	MBF		
	Sugar Maple		40.6	MBF		
	Yellow Birch		1.7	MBF		
	Balsam Fir	Pulpwood	8	Cords		
	Basswood		41	Cords		
	Mixed Aspen		52	Cords		
	<i>B. T. Aspen</i>		2	<i>Cords</i>		
	<i>Quaking Aspen</i>		50	<i>Cords</i>		
	Mixed Hardwood		542	Cords		
	<i>Ironwood</i>		1	<i>Cords</i>		
	<i>Paper Birch</i>		4	<i>Cords</i>		
	<i>Red Maple</i>		125	<i>Cords</i>		
	<i>Sugar Maple</i>		402	<i>Cords</i>		
	<i>Yellow Birch</i>		10	<i>Cords</i>		
	Mixed Spruce		8	Cords		

DESCRIPTION OF TIMBER BY PAYMENT UNIT (PU), CON'T

PU	MARKET GROUP	PRODUCT	QUANTITY	UNIT	ACRES	ADVERTISE PRICE
3 con't	<i>White Spruce</i>	<i>Pulpwood</i>	8	<i>Cords</i>		
4	Basswood	Sawtimber	18.2	MBF	54.8	\$22,874.15
	Black Cherry		0.2	MBF		
	Paper Birch		0.2	MBF		
	Red Maple		6.8	MBF		
	Sugar Maple		40.5	MBF		
	Yellow Birch		1.7	MBF		
	Balsam Fir	Pulpwood	8	Cords		
	Basswood		41	Cords		
	Mixed Aspen		52	Cords		
	<i>B. T. Aspen</i>		2	<i>Cords</i>		
	<i>Quaking Aspen</i>		50	<i>Cords</i>		
	Mixed Hardwood		541	Cords		
	<i>Ironwood</i>		1	<i>Cords</i>		
	<i>Paper Birch</i>		4	<i>Cords</i>		
	<i>Red Maple</i>		125	<i>Cords</i>		
	<i>Sugar Maple</i>		401	<i>Cords</i>		
	<i>Yellow Birch</i>		10	<i>Cords</i>		
	Mixed Spruce		8	Cords		
	<i>White Spruce</i>		8	<i>Cords</i>		
5	Basswood	Sawtimber	8.5	MBF	25.7	\$10,729.70
	Black Cherry		0.1	MBF		
	Paper Birch		0.1	MBF		
	Red Maple		3.2	MBF		
	Sugar Maple		19.0	MBF		
	Yellow Birch		0.8	MBF		
	Balsam Fir	Pulpwood	4	Cords		
	Basswood		19	Cords		
	Mixed Aspen		24	Cords		
	<i>B. T. Aspen</i>		1	<i>Cords</i>		
	<i>Quaking Aspen</i>		23	<i>Cords</i>		
	Mixed Hardwood		254	Cords		
	<i>Ironwood</i>		1	<i>Cords</i>		
	<i>Paper Birch</i>		2	<i>Cords</i>		
	<i>Red Maple</i>		58	<i>Cords</i>		
	<i>Sugar Maple</i>		188	<i>Cords</i>		
	<i>Yellow Birch</i>		5	<i>Cords</i>		
	Mixed Spruce		4	Cords		
	<i>White Spruce</i>		4	<i>Cords</i>		
6	Basswood	Sawtimber	11.4	MBF	50.4	\$15,168.50
	Paper Birch		0.8	MBF		
	Red Maple		3.7	MBF		
	Sugar Maple		18.7	MBF		
	Yellow Birch		0.4	MBF		
	Balsam Fir	Pulpwood	16	Cords		
	Basswood		22	Cords		
	Mixed Aspen		104	Cords		
	<i>B. T. Aspen</i>		11	<i>Cords</i>		
	<i>Quaking Aspen</i>		93	<i>Cords</i>		
	Mixed Hardwood		470	Cords		
	<i>Paper Birch</i>		3	<i>Cords</i>		
	<i>Red Maple</i>		161	<i>Cords</i>		
	<i>Sugar Maple</i>		298	<i>Cords</i>		
	<i>Yellow Birch</i>		8	<i>Cords</i>		
	Mixed Spruce		4	Cords		
	<i>White Spruce</i>		4	<i>Cords</i>		

DESCRIPTION OF TIMBER BY PAYMENT UNIT (PU), CON'T

PU	MARKET GROUP	PRODUCT	QUANTITY	UNIT	ACRES	ADVERTISE PRICE
7	Basswood	Sawtimber	24.2	MBF	72.6	\$30,407.25
	Paper Birch		0.2	MBF		
	Red Maple		9.1	MBF		
	Sugar Maple		53.6	MBF		
	Yellow Birch		2.3	MBF		
	Balsam Fir		10	Cords		
	Basswood		54	Cords		
	Mixed Aspen		69	Cords		
	<i>B. T. Aspen</i>		3	<i>Cords</i>		
	<i>Quaking Aspen</i>		66	<i>Cords</i>		
	Mixed Hardwood		727	Cords		
	<i>Black Cherry</i>		3	<i>Cords</i>		
	<i>Ironwood</i>		3	<i>Cords</i>		
	<i>Paper Birch</i>		8	<i>Cords</i>		
	<i>Red Maple</i>		165	<i>Cords</i>		
	<i>Sugar Maple</i>		533	<i>Cords</i>		
	<i>Yellow Birch</i>		15	<i>Cords</i>		
	Mixed Spruce		9	Cords		
	<i>White Spruce</i>		9	<i>Cords</i>		
8	Basswood	Sawtimber	18.8	MBF	56.7	\$23,661.40
	Black Cherry		0.2	MBF		
	Paper Birch		0.2	MBF		
	Red Maple		7.1	MBF		
	Sugar Maple		41.9	MBF		
	Yellow Birch		1.8	MBF		
	Balsam Fir		8	Cords		
	Basswood		42	Cords		
	Mixed Aspen		53	Cords		
	<i>B. T. Aspen</i>		2	<i>Cords</i>		
	<i>Quaking Aspen</i>		51	<i>Cords</i>		
	Mixed Hardwood		560	Cords		
	<i>Ironwood</i>		1	<i>Cords</i>		
	<i>Paper Birch</i>		4	<i>Cords</i>		
	<i>Red Maple</i>		129	<i>Cords</i>		
	<i>Sugar Maple</i>		415	<i>Cords</i>		
	<i>Yellow Birch</i>		11	<i>Cords</i>		
	Mixed Spruce		8	Cords		
	<i>White Spruce</i>		8	<i>Cords</i>		
9	Basswood	Sawtimber	18.2	MBF	54.7	\$22,831.20
	Black Cherry		0.2	MBF		
	Paper Birch		0.2	MBF		
	Red Maple		6.8	MBF		
	Sugar Maple		40.4	MBF		
	Yellow Birch		1.7	MBF		
	Balsam Fir		8	Cords		
	Basswood		41	Cords		
	Mixed Aspen		52	Cords		
	<i>B. T. Aspen</i>		2	<i>Cords</i>		
	<i>Quaking Aspen</i>		50	<i>Cords</i>		
	Mixed Hardwood		540	Cords		
	<i>Ironwood</i>		1	<i>Cords</i>		
	<i>Paper Birch</i>		4	<i>Cords</i>		
	<i>Red Maple</i>		124	<i>Cords</i>		
	<i>Sugar Maple</i>		401	<i>Cords</i>		
	<i>Yellow Birch</i>		10	<i>Cords</i>		
	Mixed Spruce		8	Cords		

PU	MARKET GROUP	PRODUCT	QUANTITY	UNIT	ACRES	ADVERTISE PRICE
9 con't	<i>White Spruce</i>	<i>Pulpwood</i>	8	<i>Cords</i>		
10	Basswood	Sawtimber	21.2	MBF	63.8	\$26,643.45
	Black Cherry		0.2	MBF		
	Paper Birch		0.2	MBF		
	Red Maple		7.9	MBF		
	Sugar Maple		47.2	MBF		
	Yellow Birch		2.0	MBF		
	Balsam Fir	Pulpwood	9	Cords		
	Basswood		47	Cords		
	Mixed Aspen		61	Cords		
	<i>B. T. Aspen</i>		3	<i>Cords</i>		
	<i>Quaking Aspen</i>		58	<i>Cords</i>		
	Mixed Hardwood		630	Cords		
	<i>Ironwood</i>		1	<i>Cords</i>		
	<i>Paper Birch</i>		5	<i>Cords</i>		
	<i>Red Maple</i>		145	<i>Cords</i>		
	<i>Sugar Maple</i>		467	<i>Cords</i>		
	<i>Yellow Birch</i>		12	<i>Cords</i>		
	Mixed Spruce		9	Cords		
	<i>White Spruce</i>		9	<i>Cords</i>		
11	Basswood	Sawtimber	8.8	MBF	39.1	\$11,723.30
	Paper Birch		0.6	MBF		
	Red Maple		2.8	MBF		
	Sugar Maple		14.5	MBF		
	Yellow Birch		0.3	MBF		
	Balsam Fir	Pulpwood	12	Cords		
	Basswood		17	Cords		
	Mixed Aspen		80	Cords		
	<i>B. T. Aspen</i>		8	<i>Cords</i>		
	<i>Quaking Aspen</i>		72	<i>Cords</i>		
	Mixed Hardwood		364	Cords		
	<i>Paper Birch</i>		2	<i>Cords</i>		
	<i>Red Maple</i>		125	<i>Cords</i>		
	<i>Sugar Maple</i>		231	<i>Cords</i>		
	<i>Yellow Birch</i>		6	<i>Cords</i>		
	Mixed Spruce		3	Cords		
	<i>White Spruce</i>		3	<i>Cords</i>		
12	Basswood	Sawtimber	12.0	MBF	53.4	\$16,087.40
	Paper Birch		0.8	MBF		
	Red Maple		3.9	MBF		
	Sugar Maple		19.8	MBF		
	Yellow Birch		0.4	MBF		
	Balsam Fir	Pulpwood	17	Cords		
	Basswood		23	Cords		
	Mixed Aspen		111	Cords		
	<i>B. T. Aspen</i>		12	<i>Cords</i>		
	<i>Quaking Aspen</i>		99	<i>Cords</i>		
	Mixed Hardwood		499	Cords		
	<i>Paper Birch</i>		3	<i>Cords</i>		
	<i>Red Maple</i>		171	<i>Cords</i>		
	<i>Sugar Maple</i>		316	<i>Cords</i>		
	<i>Yellow Birch</i>		9	<i>Cords</i>		
	Mixed Spruce		5	Cords		
	<i>White Spruce</i>		5	<i>Cords</i>		
13	Basswood	Sawtimber	14.1	MBF	62.4	\$18,719.55
	Paper Birch		1.0	MBF		

DESCRIPTION OF TIMBER BY PAYMENT UNIT (PU), CON'T

PU	MARKET GROUP	PRODUCT	QUANTITY	UNIT	ACRES	ADVERTISE PRICE
13 con't	Red Maple	Sawtimber	4.5	MBF		
	Sugar Maple	Pulpwood	23.1	MBF		
	Yellow Birch		0.4	MBF		
	Balsam Fir		19	Cords		
	Basswood		27	Cords		
	Mixed Aspen		128	Cords		
	<i>B. T. Aspen</i>		13	<i>Cords</i>		
	<i>Quaking Aspen</i>		115	<i>Cords</i>		
	Mixed Hardwood		582	Cords		
	<i>Paper Birch</i>		4	<i>Cords</i>		
	<i>Red Maple</i>		199	<i>Cords</i>		
	<i>Sugar Maple</i>		369	<i>Cords</i>		
	<i>Yellow Birch</i>		10	<i>Cords</i>		
	Mixed Spruce		5	Cords		
	<i>White Spruce</i>		5	<i>Cords</i>		
14	Basswood	Sawtimber	14.4	MBF	63.9	\$19,238.00
	Paper Birch	Pulpwood	0.6	MBF		
	Red Maple		4.7	MBF		
	Sugar Maple		23.7	MBF		
	Yellow Birch		0.5	MBF		
	Balsam Fir		20	Cords		
	Basswood		28	Cords		
	Mixed Aspen		133	Cords		
	<i>B. T. Aspen</i>		16	<i>Cords</i>		
	<i>Quaking Aspen</i>		117	<i>Cords</i>		
	Mixed Hardwood		598	Cords		
	<i>Paper Birch</i>		4	<i>Cords</i>		
	<i>Red Maple</i>		206	<i>Cords</i>		
	<i>Sugar Maple</i>		378	<i>Cords</i>		
	<i>Yellow Birch</i>		10	<i>Cords</i>		
	Mixed Spruce		5	Cords		
	<i>White Spruce</i>		5	<i>Cords</i>		
	15		Red Pine	Sawtimber		
Balsam Fir		Pulpwood	3	Cords		
Mixed Aspen		8	Cords			
<i>Quaking Aspen</i>		8	<i>Cords</i>			
Mixed Hardwood		1	Cords			
<i>Sugar Maple</i>		1	<i>Cords</i>			
Red Pine		67	Cords			
TOTAL:			826.2	MBF		
TOTAL:			8,942	Cords		

Sale Specific Conditions & Requirements

Sale Name: GNA2 Sockeye

Sale Number: 11-801-26 Seq#: 1

1 - Sale Area

1.2 - Boundaries

1.2.1 - Painted Boundaries (9/19)

The sale boundary and Payment Unit boundaries are marked and identified by triple orange paint slash or are unpainted and designated by USFS roads. Exterior sale boundary lines against USFS are marked with triple orange paint slash, with the exception of the boundary along FDR 5350 and FDR 4500, which is unpainted and designated by FDR 5350 and FDR 4500 (see Timber Sale Map). Interior Payment Unit boundaries are marked with double orange paint slash. The painted boundary line trees are not Included Timber and are to be protected unless marked with blue paint.

2 - Timber Specifications

2.1 - Included Timber

2.1.3 - Cut Tree Marked Unit(s) (12/08)

Within Payment Unit(s) 1-8, 10, 11, 14, and 15, all trees are designated for cutting when marked with blue paint above and below stump height, regardless of merchantability. Within Payment Unit(s) 9, 12, and 13, all trees are designated for cutting when marked with teal paint above and below stump height, regardless of merchantability. Additionally, the majority of Payment Unit 10 was marked with blue paint, and a small portion of Payment Unit 10 was marked in teal paint.

2.2 - Utilization

2.2.3 - Stump Heights (12/24)

Stump heights within the Sale Area shall not exceed 12 inches for trees greater than 10 inches at DBH and four (4) inches for trees smaller than 10 inches at DBH. A written waiver of this requirement may be obtained if wet summer weather makes winter logging necessary.

2.2.4 - Skidding Length (12/24)

Skidding of unlimbed tops or lengths over 17 feet is not permissible unless approved by the Unit Manager or his/her representative.

2.2.7 - Uncut Designated Trees (2/04)

Liquidated damages of \$10.00 per tree will be assessed for every marked tree not cut.

2.2.8 - Utilization and Removal (12/24)

All products meeting standards set forth in General Condition and Requirement 2.2 - Utilization must be removed from the Sale Area. This is because excess woody debris inhibits regeneration.

2.2.9 - No Chipping Permitted (12/08)

Within Payment Unit(s) 1-15, tops may not be chipped.

2.2.12 - GNA, Cut and Remove Included Timber (3/18)

Unless provided otherwise herein, the DNR agrees to sell and permit Purchaser to cut and remove Included Timber, and Purchaser agrees to purchase, cut, and remove Included Timber.

3 - Payments

3.4 - Damaged Timber

3.4.1 - Damaged Timber (12/24)

General Condition and Requirement 3.4 Damaged Timber, defines liquidated damages for undesignated live merchantable trees which are cut or injured. In addition, extreme care should be taken to avoid damage to tree seedlings and saplings. No damage is acceptable to undesignated live merchantable trees. Within the Sale Area, if more than 5 % of trees (> 4.5" DBH) within a specified area of the sale are damaged, liquidated damages will be assessed for all trees damaged. Rates will be in accordance with General Condition and Requirement 3.4 Damaged Timber.

4 - Transportation

4.1 - Construction

4.1.1 - Stream Crossings, General (1/25)

All stream crossing structures will be temporary and, therefore, shall be provided by the Purchaser and must be removed upon completion of the sale. All permits for stream crossings will be provided by the DNR on USFS land.

4.1.3 - Slash and Earthen Piles (8/04)

Piles or windrows of earth along roads and landings that have been widened or constructed shall be leveled. Slash from road maintenance or construction, including stumps, shall be dispersed throughout the sale.

4.1.4 - Timber Removed for Construction (3/23)

Trees cut or damaged in the process of pre-approved road, landing, or skid trail construction will be decked in an area separate from other Designated Timber and not removed until measured by the Sale Administrator. Payment will be made at contract prices or average prices, if not on the contract.

4.1.5 - Culverts (5/14)

Roads may require the installation of culverts for cross drainage or at natural drainage-ways. If culverts are needed in these locations, their placement will be specified by the Sale Administrator, and they shall be installed prior to hauling. The culverts shall be new, corrugated metal or plastic gauge. Culverts will be a minimum of 12 inches in diameter and 24 feet in length. If culverts are removed, fill shall be removed from wetland soils as specified. Soils shall be maintained and left in a non-erodible condition, with water bars, seed, fertilizer, mulch, and slash installed as directed by the Sale Administrator and as specified in the BMP manual. Stream crossing permits, if needed, will be obtained by the DNR on USFS land.

4.1.6 - Road Construction (4/24)

Construction of new roads or improvements of existing roads shall be done in such a way as to minimize the environmental and visual impacts. Merchantable trees shall be cut and utilized unless otherwise directed. Non-merchantable trees shall be severed and laid flat on the ground. Slash shall be scattered, not left in windrows, and kept a minimum of 10 feet back from the road edge. Stumps shall be set upright, not left on edge, and be moved at least 10 feet away from the road edge. Disturbed soil shall be feathered into the woods and not left in berms or windrows.

4.1.7 - Road Closure (10/11)

All new roads built into the sale must be blocked to vehicle traffic upon completion of the sale. Overgrown roads that are reopened shall be considered new roads. Some existing roads may also need to be closed; see the Timber Sale Map for locations. Temporary access roads will need to be closed at the time of sale completion, see the Timber Sale Map for locations. In general, this will require constructing a four (4') foot high berm of stumps and logs covered with earth. These roads must be rendered impassable to cars and trucks. All stumps from road building and landing construction must be reserved to block any newly constructed roads upon completion of the sale. These stumps must be scattered along the road system to prohibit vehicular movement. Temporary berms may be required if no sale activity occurs for 30 or more consecutive days. Contact the Sale Administrator for specific details of design and placement.

4.1.8 - Road Work (1) (8/07)

The following road work is required: The Purchaser will gravel all transitions onto FDR 5350 and 4500 used during the timber sale. This work needs to be completed prior to any hauling. Gravel must be from a weed free source. In general, this will require between five (5) and ten (10) yards of gravel per transition and must be from a weed free source and completed to the satisfaction of the Sale Administrator.

4.2 - Maintenance

4.2.1 - Hauling Restriction (12/08)

Hauling may be restricted on forest roads by the Unit Manager or his/her representative. The restriction may occur during wet weather conditions.

4.2.2 - Fill Material (4/07)

To maintain roads, fill material may be needed in areas where "holes" exist or may be expected to develop. This fill material should be placed before trucking begins. Contact the Sale Administrator regarding the availability of onsite sand or gravel from adjacent USFS-owned lands. Payment Unit 10 has a source of native gravel/sand that may be suitable for fill material. USFS approval has been given for use of this material on GNA2 Sockeye road system (See Timber Sale Map for exact location).

4.2.4 - Grading (10/16)

For completion of the sale, USFS roads must be graded. In general, this will require a road grader or bulldozer to shape up the roads after forest products have been hauled off site. This includes cleaning of drainage areas, grading, crowning and filling with gravel, if necessary. The grading equipment to be used must be approved by the Unit Manager or his/her representative.

5 - Operations

5.1 - Notification

5.1.1 - Pre-sale Conference (10/16)

A pre-sale conference on site between the Purchaser and Sale Administrator is required prior to beginning any operations to determine landing and road locations. The Unit Manager or his/her representative must be contacted at least 10 days in advance to schedule the conference.

5.1.4 - Post-Sale Conference (10/16)

A post-sale conference on site between the Purchaser and sale administrator is required five (5) days prior to the completion of active logging operations to determine clean-up and repair of landings, road edges, and the fulfillment of other contract specifications.

5.2 - Conduct of Operations

5.2.1 - Slash

5.2.1.11 - Slash for Reforestation (3/21)

To facilitate reforestation, the Sale Area shall be left with slash evenly distributed. Bunched tops within the cutting area shall be broken up and scattered. Stumps shall be cut low to the ground. Processing sites shall not be left with a compacted layer of slash; tops from these sites shall be hauled back into the cut area and scattered.

5.2.2 - Hazard Trees/Snags

5.2.2.1 - Den Trees (10/16)

Obvious hollow and/or den trees shall be protected and left standing unless they are a safety hazard.

5.2.3 - Operating Restrictions

5.2.3.1 - Operating Restrictions (9/11)

Within Payment Unit(s) 1-8 and 10-14, unless changed by written agreement, cutting, skidding, and hauling are limited to the period(s) of July 15 to September 30 and December 15 to March 15 or frozen winter conditions. Within Payment Unit(s) 9 and 15, unless changed by written agreement, cutting, skidding, and hauling are limited to the period(s) of August 1 to August 31 and December 15 to March 15 or frozen winter conditions. This restriction is because of USFS Season Operating Restrictions.

5.2.3.6 - Bark Beetle Restriction (1/25)

In the event drought creates a high risk of pine bark beetle infestation, pine is not to be cut during the period March 1 through July 1, unless all portions of trees greater than two (2) inches in diameter are removed from the Sale Area, reduced to chips, or treated to the satisfaction of the Unit Manager or his/her representative, within 15 days of being severed from the stump. Pine log decks, pulpwood piles and treetops that are piled for chipping in the fall or winter within a 1/4 mile of susceptible sites must be removed before March 15. Residual slash must not be placed in piles or rows and must be spread over the site for quick drying. The Department of Natural Resources will exercise this specification if the risk of damage warrants.

5.2.30 - Landing/Road Topsoil Protection (1/25)

Topsoil on landings and new roads must be removed, stockpiled, and saved. Upon completion of the timber sale, soil must be evenly distributed back over the area for revegetation. In addition, the area must be seeded and mulched per Sale Administrator's instructions.

5.2.32 - Decking/Landing Restoration (9/13)

All decking and landing areas must have the surface area restored to a condition equal to or better than before. This is to ensure the proper regeneration of the stand. Wood debris, chips and "cookies" from trimmings must be removed or scattered away from landing and loading areas and may not be windrowed on the edge.

5.2.38 - No Decking Against Live Trees (2/04)

Cut products may not be decked against unmarked or designated leave trees.

5.2.41 - Snowmobile Trail Protection (9/11)

Trail 107 is a snowmobile trail and is shown on the Timber Sale Map. Do not cut or damage posts with orange trail markers or traffic control signs. If the trail is used, it must be maintained and restored to a condition equal to or better than before the sale. The road maintenance/restoration must be done prior to December 1. If the trail is used for hauling, it must be graded to the satisfaction of the Unit Manager or his/her representative prior to December 1. If the trail is to be used for hauling during the snowmobile season, then a snow-covered base must be left on the trail. The hauling of forest product on the snowmobile trail are limited to Monday through Friday daylight hours during the snowmobile season. Maintain a 20-foot-wide slash, debris, and rut free zone daily using the snowmobile trail as the centerline. No decking of forest products will be permitted along the snowmobile trail. All stumps within 20 feet of the snowmobile trail must be cut at ground level.

5.4 - Soil Protection

5.4.1 - Rutting Restriction, General (7/16)

Operations are to cease immediately if equipment and weather conditions result in rutting of roads and/or skid trails which are 6 inches or greater in depth and 25 feet in length. Note: Trees within 10 feet of ruts exceeding 6" will be considered damage to tree roots being cut and will be billed in accordance with 3.4 Damaged Timber. The Unit Manager or his/her representative may restrict hauling and/or skidding if ruts exceed the specified depth. With the Unit Manager or his/her representative's approval, the Purchaser may return to the area when the risk of rutting has decreased.

5.4.2 - Skid Trails (2/04)

Skid trails up and down slopes should be avoided. If, however, this is unavoidable, these trails will be left in a non-erodible condition using water bars, logs, and slash. Placing of slash on these skid trails while logging is ongoing may alleviate need for any further action. At the direction of the Sale Administrator, seed, fertilizer, and mulch may also be required.

5.4.6 - Wet Area Protection (5/10)

No harvesting operations, including skidding and felling, are to take place within the vernal pond areas or drainages. When harvesting occurs, there should be no disturbance to the vernal pond depression. All equipment, trees and tops should be kept out of this area. Within 100 feet of the pond, equipment should only be used when the soil is in a dry or frozen condition. Care must be taken by the Purchaser to identify and avoid operating in these areas of the timber sale.

5.6 - Debris and Waste Material

5.6.2 - GNA, Equipment Cleaning (4/24)

(a) Areas, known by the DNR prior to timber sale advertisement, that are infested with invasive species of concern are shown on the Timber Sale Map. A current list of invasive species of concern and a map showing the extent of known infestations is available from the DNR. For purposes of this provision, "Off-Road Equipment" includes all logging and construction machinery, except for log trucks, chip vans, service vehicles, water trucks, pickup trucks, cars, and similar vehicles.

(b) Purchaser shall adhere to the following requirements with regard to cleaning "Off-Road Equipment":

(i) Prior to moving Off-Road Equipment onto the Sale Area, Purchaser shall identify the location of the equipment's most recent operation. Purchaser shall not move any Off-Road Equipment that last operated in an area infested with one or more invasive species of concern onto Sale Area without having cleaned such equipment of seeds, soil, vegetative matter, and other debris that could contain or hold seeds, and having notified the DNR, as provided in (iii). If the location of prior operation cannot be identified, then Purchaser shall assume that the location is infested with invasive species of concern.

(ii) Prior to moving Off-Road Equipment from a cutting unit that is shown on the Timber Sale Map to be infested with invasive species of concern to, or through any other area that is shown as being free of invasive species of concern, or infested with a different invasive species, Purchaser shall clean such equipment of seeds, soil, vegetative matter, and other debris that could contain or hold seeds, and shall notify the DNR, as provided in (iii).

(iii) Prior to moving any Off-Road Equipment subject to the cleaning requirements set forth above, Purchaser shall advise DNR of its cleaning measures and make the equipment available for inspection. DNR shall have two (2) days, excluding weekends and State holidays, to inspect equipment after it has been made available. After satisfactory inspection or after such 2-day period, Purchaser may move the equipment as planned. Equipment shall be considered clean when a visual

inspection does not disclose seeds, soil, vegetative matter, and other debris that could contain or hold seeds. Purchaser shall not be required to disassemble equipment unless so directed by the DNR after inspection.

(iv) If Purchaser desires to clean Off-Road Equipment on National Forest land, such as at the end of a project or prior to moving to, or through an area that is free of invasive species of concern, Purchaser shall obtain prior approval from the Unit Manager or his/her representative as to the location for such cleaning and measures, if any, for controlling impacts.

(v) Unit Manager or his/her representative may order delay, interruption, or modification of this Contract pursuant to Condition & Requirement 7.3 or 7.3.4.

(c) Nothing contained in this Condition & Requirement shall be interpreted as creating any warranty on the part of the DNR that all locations of invasive species of concern have been described herein, elsewhere in this Contract, or designated on the ground. Following sale advertisement, additional locations may be described or designated, and other species may be added to the list of invasive species of concern. In such event, the Unit Manager or his/her representative may order delay, interruption, or modification of this Contract pursuant to Condition & Requirement 7.3 or 7.3.4.

(d) The parties shall promptly communicate with one another with respect to description or designation of additional locations; discovery of locations of new species or new infestation; and, addition of species to the list of invasive species of concern.

5.8 - Protection of Endangered Species

5.8.5 - Protection of Raptor Nests (3/13)

All trees with raptor nests will be protected if found during harvesting operations. Notification will be made to the Unit Manager or his/her representative who will notify the Wildlife Biologist so an onsite evaluation and recommendation can be made, if necessary.

5.8.9 - GNA, Bat Habitat and Roost Trees (7/25)

If bats are observed emerging from a tree prior to being felled, or if injured or dead bats are found after a tree is felled, notify the Unit Manager for coordination with Forest Service biologists. If the tree is determined to be a roost, the contract may be amended to include a no activity buffer (typically 150 feet radius around the roost tree or trees).

During operations if any sick, injured, and/or dead bats (regardless of species) are found in the Sale Area the Purchaser shall report its location to the Sale Administrator as soon as possible, but no more than 12 hours upon discovery.

6 - Safety and Fire Prevention

6.2 - Signing

6.2.1 - Road Posting (10/20)

The Purchaser is responsible for posting and maintaining caution signs on FDR 4500 and FDR 5350 prior to beginning operations. The road must be posted at appropriate distances from the Sale Area to warn of logging activity and truck traffic. Signs must be removed when harvest operations are suspended or completed. The Purchaser will provide these signs.

6.2.2 - Snowmobile Trail Posting (10/20)

The Purchaser is responsible for posting and maintaining caution signs on snowmobile trail 107 prior to beginning operations during the snowmobile season (approximately December 1 to March 31). The trail must be posted at appropriate distances from the Sale Area to warn of logging activity and truck traffic. Signs must be removed when harvest operations are suspended or completed. The Purchaser will provide these signs.

7 - Other Conditions

SKIP

7.1.1 - GNA, Title (7/16)

General Condition & Requirement 7.1 is inapplicable. The following applies to this contract.

All right, title, and interest in and to any Included Timber shall remain in USDA Forest Service with the State of Michigan acting on behalf of the USDA Forest Service under this GNA contract, until it has been Measured, removed from Sale Area or other authorized cutting area, and paid for, at which time title shall vest in Purchaser. Title to any Included Timber that has

been Measured and paid for, but not removed from Sale Area or other authorized cutting area by Purchaser on or prior to Termination Date, shall remain in USDA Forest Service.

7.3 - Contract Modifications

7.3.4 - GNA, Contract Suspension and Modification (5/16)

(a) The Unit Manager may, by written order, delay or interrupt authorized operations under this contract or, notwithstanding Condition & Requirement 7.3, modify this contract, in whole or in part:

(i) To prevent environmental degradation or resource damage, including, but not limited to, harm to habitat, plants, animals, cultural resources, or cave resources;

(ii) To ensure consistency with land and resource management plans or other documents prepared pursuant to the National Environmental Policy Act of 1969, 42 USC 4321-4347;

(iii) To conduct environmental analysis, including, but not limited to, engaging in consultation pursuant to the Endangered Species Act of 1973, 16 USC 1531, et seq.; or

(iv) Upon agreement of the Forest Service, due to administrative appeal or litigation, regardless of whether the Unit Manager's order is required by a court order or this contract is named in such a proceeding.

(b) In the event of an order delaying or interrupting Purchaser's Operations under this Condition & Requirement, Purchaser's remedy shall be:

(i) a no cost contract extension,

(ii) reimbursement for Out-of-Pocket Expenses,

however, the foregoing remedies shall be available only to the extent that the Unit Manager's order was the sole and exclusive cause of the delay or interruption of Purchaser's operations.

(c) Remedies awarded to the Purchaser shall not be duplicative, and the Unit Manager shall have the right to structure remedies provided herein to avoid duplicative compensation.

(d) Purchaser agrees that this Condition & Requirement, and the remedies provided herein shall apply regardless of any finding by any court that the DNR failed to comply with any statute, regulation and/or policy in connection with awarding, advertising, or authorizing this sale, or a similar sale.

7.5 - Loss

7.5.2 - GNA, Liability for Loss (7/16)

If Included Timber is destroyed or damaged by an unexpected event that changes the nature of Included Timber, such as wind, flood, insects, disease, or similar cause, the Purchaser shall bear the timber value loss resulting from such destruction or damage.

Deterioration or loss of timber value due to delay or interruption under 7.3.4 - GNA, contract suspension and modification, shall be borne by the party holding title. In this event, Included Timber to which USDA Forest Service holds title, Purchaser of the State GNA contract will not be obligated to remove and pay for such timber. This Subsection shall not be construed to relieve either party of liability for negligence.

7.10 - Certified Timber

7.10.1 - Non-Certified Timber (2/16)

The area encompassed by this timber sale is not certified to the standards of the Forest Stewardship Council (FSC) or the Sustainable Forestry Initiative (SFI). Forest products from this sale may not be delivered to the mill as "FSC and / or SFI certified". The lands within this sale belong to the National Forest system and are being managed by the State as part of a Good Neighbor Authority (GNA) agreement.



TIMBER SALE MAP

This information provided by authority of Part 525, 1994 PA 451, as amended.

Sale Number

11-801-26

Date

09/11/2025

Forest Management Unit

County

Mapped By: Sullivan

Baraga Mgt Unit

Ontonagon

Cruised By: Sullivan/Collins

Scale

1:20,000

Page

1

Of

1

Township
46N

Range
38W

Section(s) and Subdivision(s) NW,NE,N1/2SE,SESE; Sec. 15 NENE; Sec. 24 NENW;
Sec. 10 E1/2SE; Sec. 11 SWNW,SW,SE; Sec. 12 SW,W1/2SE; Sec. 13 NW,SW,NWSE; Sec. 14

Cover Type

A = Aspen	J = Jack Pine	O = Oak	U = Upland Brush
B = Paper Birch	K = Rock	P = Lowland Poplar	UM = Upland Mix Forest
C = Cedar	L = Lowland Brush	Q = Mixed Swamp Conifer	V = Bog or Marsh
D = Treed Bog	LM = Lowland Mix Forest	R = Red Pine	W = White Pine
E = Swamp Hardwoods	M = Maple, Beech, Birch	S = Black Spruce	X = Non Stocked
F = Spruce/Fir	MC = Mixed Conifer	T = Tamarack	Y = Sand
G = Grass	MD = Mixed Deciduous		Z = Water
H = Hemlock	N = Marsh		

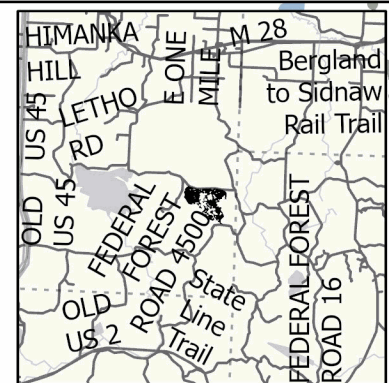
Density

0 = Non Stocked	5 = Pole Timber Medium
1 = Seedling Sapling Poor	6 = Pole Timber Well
2 = Seedling Sapling Medium	7 = Saw Timber Poor
3 = Seedling Sapling Well	8 = Saw Timber Medium
4 = Pole Timber Poor	9 = Saw Timber Well

GNA2 Sockeye

Ontonagon - Compartment 7904175

UNIT	1	2	3	4	5	6	7	8	9	10	11	12	13	14	15	TOTALS
ACRES	29.2	56.9	54.9	54.8	25.7	50.4	72.6	56.7	54.7	63.8	39.1	53.4	62.4	63.9	19.6	758.1
Sawlogs MBF																
Red Maple	3.6	7.1	6.8	6.8	3.2	3.7	9.1	7.1	6.8	7.9	2.8	3.9	4.5	4.7	0.0	78.0
Sugar Maple	21.6	42.1	40.6	40.5	19.0	18.7	53.6	41.9	40.4	47.2	14.5	19.8	23.1	23.7	0.0	446.7
Yellow Birch	0.9	1.8	1.7	1.7	0.8	0.4	2.3	1.8	1.7	2.0	0.3	0.4	0.4	0.5	0.0	16.7
Black Cherry	0.1	0.1	0.2	0.2	0.1	0.0	0.0	0.2	0.2	0.2	0.0	0.0	0.0	0.0	0.0	1.3
Paper Birch	0.1	0.2	0.2	0.2	0.1	0.8	0.2	0.2	0.2	0.2	0.6	0.8	1.0	0.6	0.0	5.4
Basswood	9.7	18.9	18.2	18.2	8.5	11.4	24.2	18.8	18.2	21.2	8.8	12.0	14.1	14.4	0.0	216.6
Red Pine	0.0	0.0	0.0	0.0	0.0	0.0	0.0	0.0	0.0	0.0	0.0	0.0	0.0	0.0	0.0	61.4
TOTAL	36.0	70.2	67.7	67.6	31.7	35.0	89.4	70.0	67.5	78.7	27.0	36.9	43.1	43.9	61.4	826.1
Pulpwood CORDS																
Baswood	22	42	41	41	19	22	54	42	41	47	17	23	27	28	0	466
Mixed Aspen	27	54	52	52	24	104	69	53	52	61	80	111	128	133	8	1008
Mixed Hardwood	289	562	542	541	254	470	727	560	540	630	364	499	582	598	1	7159
Balsam Fir	4	8	8	8	4	16	10	8	8	9	12	17	19	20	3	154
Mixed Spruce	4	8	8	8	4	4	9	8	8	9	3	5	5	5	0	88
Red Pine	0	0	0	0	0	0	0	0	0	0	0	0	0	0	0	67
TOTAL	346	674	651	650	305	616	869	671	649	756	476	655	761	784	79	8942



Locator Map
1:500,000



Use QR Code to
open Map in App



Legend

- Against USFS (Triple Orange)
- Payment Unit (Double Orange)
- Borrow Pit Location
- Berm
- Temp Access Route
- Reconstruction - Temp Access
- Temp Back In
- Retention Areas
- Recreational Trails
- Gravel Road

The sale boundary lines
against FDR 4500 and
FDR 5350 are unpainted
and identified by the
roads.

0 0.25 0.5 1 Miles

BID INSTRUCTIONS (VER. 10/10/2022):

1. Scheduled Bid Location, Date, and Time (2/11)

Bids must be received by the Unit Manager, BARAGA OFFICE, 427 US 41 North, Baraga, MI 49908, no later than 9:00 a.m. (local time) on December 11, 2025. For further information concerning this sale, contact Brad Carlson at 906-353-6651.

2. Bidder's Qualifications (10/22)

If all or part of a timber sale was prepared by a private contractor, the contractor and that contractor's company are not permitted to bid on the timber sale. A person must be 18 years of age or older to purchase timber. Permanent employees of the Department of Natural Resources or members of their immediate household may not bid. Former employees, in the permanent or seasonal class, may not bid until 3 months after the last day of active duty. Bids will not be accepted from individuals or companies appearing on the DNR/FRD No-Bid List. This list contains the names of purchasers who previously failed to execute a contract within 21-days or who have a history of poor performance.

3. Preparation of Sealed Bids (5/16)

Bid Forms may be completed online thru Michigan DNR Timber Sale Online Bidding (OLB) at www.michigan.gov/timberbidding or by completing the hardcopy Bid Form found in the Timber Sale Prospectus. Hardcopy Bid Forms shall be manually signed in ink. Registration in OLB is considered your 'signature' for all bids submitted thru that system. Bid prices must be entered for each species and product in the Bid Price column for all material subject to bidding and all fill-in blanks must be completed. If erasures or other changes appear on the hardcopy Bid Form, each erasure or change must be initialed by the person signing the bid.

4. Submission of Sealed Bids (5/16)

Bid forms may be obtained from the Unit Manager or thru OLB. Bids may be submitted hardcopy or thru OLB. All hardcopy bids must be submitted on the bid form and in an envelope clearly identified as described in this section. NOTE: Only one bid form per bid envelope. Sealed bids must be submitted to the Unit office designated in the prospectus and must be submitted at or prior to the time established in the prospectus. The envelope should show on the outside (a) the sale name or number and (b) the date and time of bid opening, as shown in the prospectus. Bids received after the time specified in the sale prospectus are late bids and will be rejected.

It is possible for a bidder to submit multiple bids on a single sale. For example, a bid may be submitted hardcopy and a bid may be submitted thru OLB. Or, two bidders from the same company could both submit bids on the same sale. If this were to happen, the State would accept all bids received and award the contract accordingly. All bidding and contractual requirements would apply to all bids received.

5. Public Opening of Sealed Bids (7/16)

If conditions permit, the sealed bids will be publicly opened and posted at the time and place set in the prospectus.

If a bidder, present at a bid opening, has submitted bids on more than one sale, that bidder may withdraw their unopened bid envelopes or announce the withdrawal of their online bid after being declared the successful bidder on one sale.

6. Award of Contract (1/11)

Award of the contract will be made to the Bidder whose bid, conforming to the prospectus, is most advantageous to the State of Michigan on the basis of total value at rates bid for the estimated quantities. The State reserves the right to reject any bid or waive any minor irregularity in bids received. A written award mailed (or otherwise furnished) to the successful Bidder shall be deemed to result in a binding contract without further action by either party.

7. Down Payment (1/11)

The Bidder to whom award is made must make a down payment within 21 days of the sale award. The amount of the down payment will be calculated as shown in the Bond and Payment Schedule of this prospectus. Only cash may be used to meet this requirement.

8. Performance Security (1/11)

As guarantee of faithful performance, a cash bond, certificate of deposit, surety bond or irrevocable letter of credit (LOC) is required within 21 days of the sale award. The amount of the performance security is shown in the Bond and

Payment Schedule of this prospectus. If an LOC or surety is used, the coverage must extend for at least 6 months beyond the contract expiration.

9. Worker's Compensation (10/22)

Purchaser shall obtain worker's compensation insurance to cover claims under Michigan's Worker's Disability Compensation Act of 1969 or similar employee benefit act of any other state applicable to an employee. Verification of Worker's Disability Compensation Act Compliance must be completed and submitted within 21 days of contract award and prior to the issuance of the timber sale contract. In addition, if applicable, Notice of Exclusion or Certificate of Insurance must also be submitted.

10. Timber Sale Contract (10/22)

Additional conditions and requirements common to all timber sales are listed on the timber sale contract (R4031) and are available on line at www.michigan.gov/timber. Contact the Unit Manager for additional information or a sample contract. Within 21 days of the date of the award letter, the bidder must sign the contract and provide the required down payment, performance security, and verification of worker's disability compensation. The down payment and performance security shall be in accordance with the provisions of the timber sale contract, in the sums stated in this prospectus. If these actions are not taken, then the Bidder, the Bidder's corporation, and the corporation's principals may not be permitted to bid on State timber sales for a period of 3 months after the first offense, 6 months after the second offense, and 1 year after the third offense. An offense will only be counted against the Bidder for 5 years. In addition, the Bidder certifies that if awarded this contract, the Bidder will complete the timber sale contract in accordance with its terms and any modifications thereof including requirements to purchase, cut, and remove the included timber by the expiration date.

Payment Unit values in the State Forest Timber Sale Contract are calculated based on the advertised value of the Payment Unit as a percentage of the total advertised value of the contract. The advertised value of each Payment Unit is given in the Description of Timber by Payment Unit table on the Timber Sale Information page. For example, if the value of Payment Unit 1 is advertised as \$1,500 and the total Timber Sale value is advertised as \$10,000, the contract price for Payment Unit 1 will be 15% of the total bid price ($\$1,500/\$10,000 * 100$).

11. Disclaimer of Estimates and Bidder's Warranty of Inspection (10/22)

Before submitting this bid, the Bidder is advised and cautioned to inspect the sale area, review the requirements of the sale contract, and take other steps as may be reasonably necessary to ascertain the location, estimated volumes, construction estimates, and operating costs of the proposed sale. Failure to do so will not relieve the Bidder from responsibility for completing the contract.

The Bidder warrants that this bid is submitted solely on the basis of the Bidder's examination and inspection of the quality and quantity of the timber offered for sale and the Bidder's opinion of the value thereof and the costs of recovery. No reliance should be placed on the State of Michigan's estimates of timber quality, quantity or costs of recovery. Bidder further acknowledges that the State of Michigan: (i) expressly disclaims any warranty of fitness of timber for any purpose; (ii) offers this timber as is without any warranty of quality (merchantability) or quantity and (iii) expressly disclaims any warranty as to the quantity or quality of timber sold.

12. Certification and Chain-of-Custody (10/22)

Unless otherwise indicated in the contract under section 7 – Other Conditions of the Sale Specific Conditions & Requirements, the area encompassed by this timber sale is certified to the standards of the Forest Stewardship Council (FSC) - Certificate #SCS-FM/COC-00090N and the Sustainable Forestry Initiative (SFI) - Certificate #NSF-SFIS-5Y031-SF5. Forest products from this sale may be delivered to the mill as "FSC 100% and / or SFI certified" as long as the contractor hauling the forest products is chain-of-custody (COC) certified or covered under a COC certificate from the destination mill. The purchaser is responsible for maintaining COC after leaving the sale area.

13. Good Neighbor Authority (GNA) Requirements (10/22)

If the name of this timber sales contains the acronym GNA, it is authorized by the Good Neighbor Authority (GNA) and covered by various agreements between the U.S. Forest Service and the State. The timber sale occurs on federal land and the following conditions apply:

GNA contracts on US Forest Service land will not be awarded to purchasers on the Federal list of excluded parties. The System for Award Management (SAM) will be checked for active excluded parties prior to award of contract. In

addition, the Bidder to whom award is made must complete an Assurance Regarding Felony Conviction or Tax Delinquent Status for Corporate Applicants (AD-3031).

14. Good Neighbor Authority (GNA) Requirements, con't (10/22)

Bidder certifies, by signing this bid form, that to the best of Bidder's knowledge that the following representations are accurate and complete.

- a. That the Bidder and its principals are not presently debarred, suspended, proposed for debarment, declared ineligible, or voluntary excluded from timber sales (covered transactions) by any Federal department or agency.
- b. That the Bidder and its principals have not within a 3-year period preceding this bid been convicted of or had a civil judgment rendered against them for commission of fraud or a criminal offense in connection with obtaining , attempting to obtain, or performing a public (Federal, State, or local) transaction or contract under a public transaction; violation of Federal or State antitrust statutes or commission of embezzlement, theft, forgery, bribery, falsification or destruction of records, making false statements, or receiving stolen property.
- c. That the Bidder and its principals are not presently indicted for or otherwise criminally or civilly charged by a governmental entity (Federal, State, or local) with commission of any of the offenses enumerated in paragraph b of this certification.
- d. That the Bidder and its principals have not within a 3-year period preceding this bid had one or more public transactions (Federal, State, or local) terminated for breach or default of a timber or forest product contract.

Bidders that cannot certify this requirement, in whole or in part, shall submit an explanation with their bid.

Scott Bowen
Director

TIMBER SALE INFORMATION

Wilted Crown (12-054-26)

T41N, R32W, SEC. 11; T41N, R32W, SEC. 2; T41N, R32W, SEC. 3; T41N, R32W, SEC. 4.

Iron County (Advertised Price \$263,523.25)

SALE NOTE: This sale was cruised during September and October, 2025. No currently dead oak was included in the cruise volume.

This sale has a short contract completion window with limited operating dates; see related specs 5.2.3.1 and 7.2.6 for details.

A timber sale contract for this lump sum, sealed bid timber sale will be awarded to the responsible bidder offering the highest sealed bid price. All units of volume listed below were estimated using the Inventory Manager computer program and the new Michigan taper model. Bids must be at or above the following advertised price for each product and species:

<u>PRODUCTS & SPECIES</u>	<u>ESTIMATED UNITS*</u>	<u>ADVERTISED PRICE</u>
Sawtimber		
Paper Birch	3.5 MBF	\$ 83.00 / MBF
Red Maple	18.3 MBF	\$ 176.00 / MBF
Red Oak	1,182.0 MBF	\$ 155.00 / MBF
Pulpwood		
B. T. Aspen	521 Cords	\$ 18.60 / Cord
Ironwood	4 Cords	\$ 12.55 / Cord
Paper Birch	37 Cords	\$ 5.20 / Cord
Quaking Aspen	1,523 Cords	\$ 18.60 / Cord
Red Maple	324 Cords	\$ 12.55 / Cord
Red Oak	1,544 Cords	\$ 15.45 / Cord
Red Pine	140 Cords	\$ 75.05 / Cord
Sugar Maple	9 Cords	\$ 12.55 / Cord

* The total volume is statistically estimated within plus (+) or minus (-) 8.99 percent. There are an estimated 6,922 cords on this timber sale, plus or minus 622 cords at the 95% confidence level. The estimated units are final and not subject to adjustment. Prospective bidders are urged to examine this timber and to make their own estimates of quantity and quality.

BOND AND PAYMENT SCHEDULE:

1. A bond in the amount of \$13,176.00 to insure faithful performance of the conditions of the contract will be deposited by the successful bidder within 21 days of the sale award.
2. Cutting in any sale or unit without the required advance payment would be considered a trespass.
3. Total payment must be paid in advance or according to the following schedule :
 - (a) Ten percent (10%) of the sale value must be paid within 21 days of the sale award.
 - (b) The 10% down payment will be credited towards the first unit cut.
 - (c) Payment for each of the following units must be made before cutting begins in that unit:

<u>PAYMENT UNIT NUMBER</u>	<u>PERCENT OF TOTAL SALE VALUE</u>
01	1.7%
02	2.9%
03	10.0%
04	2.4%
05	14.5%
06	6.0%
07	2.5%
08	4.7%
09	1.8%
10	2.9%
11	2.2%
12	4.9%
13	0.6%
14	10.7%
15	10.6%
16	3.2%
17	4.3%
18	4.2%
19	2.1%
20	0.1%
21	2.5%
22	5.2%

4. If no cutting takes place, the 10% down payment will not be refunded.
5. Operations on the contract issued will terminate on 03/31/2027.

SALE STATISTICS

Volumes were calculated in cubic feet using the Michigan taper model. Cubic foot volume includes all wood inside bark for the product indicated. For display purposes, cubic feet were converted to cords and MBF using a simple conversion factor, e.g. 79 cubic feet per cord and 185 cubic feet per MBF. The cubic foot volumes are precise; the cords and MBF volumes are not. Cubic foot volume cannot be directly converted to cords or boards with precision.

SALE VOLUMES

The total estimated sale volume may not equal the sum of the species/products due to the nature of statistical calculations associated with double sampling methodology.

VOLUME			STATISTICAL RANGE IN CORDS	
TOTAL CUBIC FEET	TOTAL CORDS	PERCENT ERROR	MINIMUM	MAXIMUM
546,815	6,922	8.99%	6,299	7,544

VDU VOLUMES

A VDU is a Volume Determination Unit. Volumes and their associated statistics are calculated at the VDU level and summarized to the sale level. There is often a one to one relationship between a VDU and a Payment Unit, but not always, depending on the cruise design. Refer to the VDU TO PAYMENT UNIT table.

	VOLUME			RANGE IN CORDS	
VDU	TOTAL CUBIC FEET	TOTAL CORDS	PERCENT ERROR	MINIMUM	MAXIMUM
1	7,828	99	55.93%	44	155
2	20,349	258	31.29%	177	338
3	3,512	44	80.85%	9	80
4	54,623	691	24.92%	519	864
5	8,958	113	58.24%	47	179
6	60,016	760	27.40%	552	968
7	6,861	87	32.52%	59	115
8	10,975	139	75.32%	34	244
9	13,584	172	86.13%	24	320
10	23,456	297	27.09%	216	377
11	36,413	461	32.32%	312	610
12	13,191	167	45.10%	92	242
13	56,081	710	26.31%	523	897
14	18,456	234	41.56%	137	331
15	91,857	1,163	29.37%	821	1,504
16	13,374	169	27.58%	123	216
17	6,846	87	35.54%	56	117
18	53,774	681	37.28%	427	934
19	9,213	117	30.57%	81	152
20	24,194	306	58.86%	126	487
21	12,756	161	51.94%	78	245
22	499	6	71.70%	2	11
TOTAL:	546,815	6,922		4,457	9,387

VDU TO PAYMENT UNIT

When a VDU is associated with more than one Payment Unit (PU), the VDU volumes are assigned to the PU based on acres of the VDU within the PU.

VDU	VDU ACRES	PU	PU ACRES
TOTAL:			

DESCRIPTION OF TIMBER BY PAYMENT UNIT (PU)

PU	MARKET GROUP	PRODUCT	QUANTITY	UNIT	ACRES	ADVERTISE PRICE
1	Red Oak B. T. Aspen Red Oak	Sawtimber Pulpwood	24.5 1 40	MBF Cords Cords	2.9	\$4,434.10
2	Red Oak Red Maple Red Oak Red Pine	Sawtimber Pulpwood	38.6 6 55 10	MBF Cords Cords Cords	6.3	\$7,658.55
3	Paper Birch Red Maple Red Oak B. T. Aspen Paper Birch Quaking Aspen Red Maple Red Oak	Sawtimber Pulpwood	1.7 1.0 128.7 51 14 9 6 304	MBF MBF MBF Cords Cords Cords Cords Cords	12.0	\$26,226.50
4	Red Oak Red Oak	Sawtimber Pulpwood	37.8 25	MBF Cords	3.0	\$6,245.25
5	Red Oak Red Maple Red Oak Red Pine	Sawtimber Pulpwood	206.1 6 228 43	MBF Cords Cords Cords	17.6	\$38,770.55
6	Paper Birch Red Maple Red Oak B. T. Aspen Paper Birch Red Maple Red Oak	Sawtimber Pulpwood	1.8 3.2 88.1 9 2 7 74	MBF MBF MBF Cords Cords Cords Cords	12.6	\$15,777.05
7	Red Oak Red Maple Red Oak	Sawtimber Pulpwood	33.9 5 83	MBF Cords Cords	4.7	\$6,599.60
8	Red Oak B. T. Aspen Red Maple Red Oak	Sawtimber Pulpwood	74.3 7 5 48	MBF Cords Cords Cords	7.0	\$12,451.05
9	Red Oak B. T. Aspen Red Maple Red Oak	Sawtimber Pulpwood	28.1 3 2 16	MBF Cords Cords Cords	2.1	\$4,683.60
10	Red Oak B. T. Aspen Red Maple Red Oak Sugar Maple	Sawtimber Pulpwood	42.4 3 4 60 4	MBF Cords Cords Cords Cords	3.9	\$7,655.20
11	Red Oak Red Oak	Sawtimber Pulpwood	33.9 37	MBF Cords	3.3	\$5,826.15
12	Red Oak B. T. Aspen Red Maple Red Oak	Sawtimber Pulpwood	75.3 3 9 69	MBF Cords Cords Cords	7.3	\$12,906.30
13	Red Oak B. T. Aspen Paper Birch Quaking Aspen Red Maple	Sawtimber Pulpwood	6.4 9 4 6 3	MBF Cords Cords Cords Cords	2.1	\$1,453.05

DESCRIPTION OF TIMBER BY PAYMENT UNIT (PU), CON'T

PU	MARKET GROUP	PRODUCT	QUANTITY	UNIT	ACRES	ADVERTISE PRICE
13 con't	Red Oak	Pulpwood	8	Cords		
14	Red Maple	Sawtimber	1.8	MBF	12.4	\$28,120.65
	Red Oak		142.3	MBF		
	B. T. Aspen	Pulpwood	78	Cords		
	Paper Birch		7	Cords		
	Red Maple		60	Cords		
	Red Oak		227	Cords		
15	Red Oak	Sawtimber	143.2	MBF	11.5	\$27,863.60
	B. T. Aspen	Pulpwood	143	Cords		
	Red Maple		39	Cords		
	Red Oak		163	Cords		
16	B. T. Aspen	Pulpwood	15	Cords	14.5	\$8,396.55
	Paper Birch		2	Cords		
	Quaking Aspen		419	Cords		
	Red Maple		25	Cords		
17	Red Maple	Sawtimber	6.2	MBF	15.4	\$11,337.55
	B. T. Aspen	Pulpwood	61	Cords		
	Ironwood		2	Cords		
	Paper Birch		4	Cords		
	Quaking Aspen		453	Cords		
	Red Maple		48	Cords		
	Sugar Maple		3	Cords		
18	Red Maple	Sawtimber	6.1	MBF	15.2	\$11,177.20
	B. T. Aspen	Pulpwood	60	Cords		
	Ironwood		2	Cords		
	Paper Birch		4	Cords		
	Quaking Aspen		447	Cords		
	Red Maple		48	Cords		
	Sugar Maple		2	Cords		
19	B. T. Aspen	Pulpwood	78	Cords	8.3	\$5,449.60
	Quaking Aspen		188	Cords		
	Red Maple		40	Cords		
20	Red Oak	Sawtimber	0.8	MBF	0.6	\$183.15
	Quaking Aspen	Pulpwood	1	Cords		
	Red Maple		2	Cords		
	Red Oak		1	Cords		
21	Red Pine	Pulpwood	87	Cords	1.9	\$6,529.35
22	Red Oak	Sawtimber	77.6	MBF	25.4	\$13,778.65
	Red Maple	Pulpwood	9	Cords		
	Red Oak		106	Cords		
TOTAL:			1,203.8	MBF		
TOTAL:			4,102	Cords		

Sale Specific Conditions & Requirements

Sale Name: Wilted Crown

Sale Number: 12-054-26 Seq#: 1

1 - Sale Area

1.2 - Boundaries

1.2.1 - Painted Boundaries (9/19)

The sale boundary and Payment Unit boundaries are marked and identified by blue, red and yellow paint. Exterior sale boundary lines against private property are marked with blue paint. Exterior sale boundary lines against state are marked with red paint. Interior Payment Unit boundaries are marked with yellow paint. The red/blue painted boundary line trees are not Included Timber and are to be protected unless marked with orange paint. Yellow painted trees designating an interior Payment Unit boundary are only to be cut when all surrounding Payment Units have been paid.

2 - Timber Specifications

2.1 - Included Timber

2.1.1 - Clearcut Unit(s) with Unmerchantable Trees (6/14)

Within Payment Unit(s) 1 - 11, cut all trees that are two (2) inches or more at DBH.

2.1.2 - Clearcut Unit(s) w/o Unmerchantable Trees (8/11)

Within Payment Unit(s) 12 - 19, cut all trees which meet minimum piece specifications in 2.2 Utilization. Leave all conifer species. In addition, within Payment Units 16-19, also leave all oak.

2.1.3 - Cut Tree Marked Unit(s) (12/08)

Within Payment Unit(s) 20 - 22, all trees are designated for cutting when marked with orange paint above and below stump height, regardless of merchantability.

Also, Payment Unit 22 contains (3) three, approximate 1/2 acre, gaps which are delineated out with yellow paint. The yellow painted trees are not included timber and are only to be cut if marked with orange paint. Within these gaps, cut all trees that are two (2) inches or more at DBH.

2.2 - Utilization

2.2.3 - Stump Heights (12/24)

Stump heights within Payment Units 1 - 11 shall not exceed (12) inches for trees greater than 10 inches at DBH and (4) inches for trees smaller than 10 inches at DBH. This is in order to facilitate planting operations.

2.2.6 - Roundwood Operation Required (3/21)

The skidding of whole trees or tree segments with limbs attached is prohibited within Payment Units 20 - 22. All products must be produced as roundwood and forwarded to existing roads or landing areas in final product length. Trees must be harvested with in-woods processor in order to retain existing understory.

3 - Payments

3.4 - Damaged Timber

3.4.1 - Damaged Timber (12/24)

General Condition and Requirement 3.4 Damaged Timber, defines liquidated damages for undesignated live merchantable trees which are cut or injured. In addition, extreme care should be taken to avoid damage to tree seedlings and saplings, especially in Payment Units 12 - 22. No damage is acceptable to undesignated live merchantable trees. Within the Sale Area, if more than 5% of trees (> 4.5" DBH) within a specified area of the sale are damaged, liquidated damages will be assessed for all trees damaged. Rates will be in accordance with General Condition and Requirement 3.4 Damaged Timber.

4 - Transportation

4.1 - Construction

4.1.4 - Timber Removed for Construction (3/23)

Trees cut or damaged in the process of pre-approved road, landing, or skid trail construction will be decked in an area

separate from other Designated Timber and not removed until measured by the Sale Administrator. Payment will be made at contract prices or average prices, if not on the contract.

4.1.6 - Road Construction (4/24)

Construction of new roads or improvements of existing roads shall be done in such a way as to minimize the environmental and visual impacts. Merchantable trees shall be cut and utilized unless otherwise directed. Non-merchantable trees shall be severed and laid flat on the ground. Slash shall be scattered, not left in windrows, and kept a minimum of 10 feet back from the road edge. Stumps shall be set upright, not left on edge, and be moved at least 10 feet away from the road edge. Disturbed soil shall be feathered into the woods and not left in berms or windrows.

4.1.7 - Road Closure (10/11)

All new roads built into the sale must be blocked to vehicle traffic upon completion of the sale. Overgrown roads that are reopened shall be considered new roads. In general, this will require constructing a four (4') foot high berm of stumps and logs covered with earth. Additional, currently "grown in" roads may require new berm construction. Contact the Sale Administrator for specific details of design and placement.

4.1.12 - No New Roads (1/12)

No new roads will be permitted in any Payment Unit. All operations are limited to existing roads. Only skid trails will be allowed.

4.2 - Maintenance

4.2.4 - Grading (10/16)

For completion of the sale, state forest roads must be graded. In general, this will require a road grader or bull dozer to shape up the roads after forest products have been hauled off site. This includes cleaning of drainage areas, grading, crowning and filling with gravel, if necessary. The grading equipment to be used must be approved by the Unit Manager or his/her representative.

4.4 - Access

4.4.2 - Alternate route on private property (2/04)

It is the Purchaser's responsibility to obtain access across private land for any routes other than the route shown on the Timber Sale Map.

5 - Operations

5.1 - Notification

5.1.1 - Pre-sale Conference (10/16)

A pre-sale conference between the Purchaser and Sale Administrator is required prior to beginning any operations. The Unit Manager or his/her representative must be contacted at least three (3) business days in advance to schedule the conference.

5.2 - Conduct of Operations

5.2.1 - Slash

5.2.1.11 - Slash for Reforestation (3/21)

To facilitate reforestation, Payment Units 1 - 18 shall be left with slash evenly distributed. Bunched tops within the cutting area shall be broken up and scattered. Stumps shall be cut low to the ground. Processing sites shall not be left with a compacted layer of slash; tops from these sites shall be hauled back into the cut area and scattered.

5.2.2 - Hazard Trees/Snags

5.2.2.1 - Den Trees (10/16)

Obvious hollow and/or den trees shall be protected and left standing unless they are a safety hazard.

5.2.3 - Operating Restrictions

5.2.3.1 - Operating Restrictions (9/11)

Within Payment Unit(s) 1 - 22, cutting, skidding, hauling, and any brushing and/or roadwork is not permitted during the period of April 1 through October 31. This restriction is to limit areas of spreading oak wilt infections within the Sale Area.

This sale must be completed by March 31, 2027.

5.2.32 - Decking/Landing Restoration (9/13)

All decking and landing areas must have the surface area restored to a condition equal to or better than before. This is to ensure the proper regeneration of the stand. Wood debris, chips and "cookies" from trimmings must be removed or scattered away from landing and loading areas and may not be windrowed on the edge.

5.2.37 - No Decking Areas (12/08)

No decking is allowed within 50 feet of County roads (Paint Pond Road) without permission of the County and Unit Manager or his/her representative.

5.2.38 - No Decking Against Live Trees (2/04)

Cut products may not be decked against unmarked or designated leave trees.

5.4 - Soil Protection

5.4.1 - Rutting Restriction, General (7/16)

Operations are to cease immediately if equipment and weather conditions result in rutting of roads and/or skid trails which are six (6) inches or greater in depth and 50 feet in length. Note: Trees within 10 feet of ruts exceeding six (6) inches deep will be considered damaged due to damage caused to the tree roots and will be billed in accordance with 3.4 Damaged Timber. The Unit Manager or his/her representative may restrict hauling and/or skidding if ruts exceed the specified depth. With the Unit Manager or his/her representative's approval, the Purchaser may return to the area when the risk of rutting has decreased.

5.4.2 - Skid Trails (2/04)

Skid trails up and down slopes should be avoided. If, however, this is unavoidable, these trails will be left in a non-erodible condition using water bars, logs, and slash. Placing of slash on these skid trails while logging is ongoing may alleviate need for any further action. At the direction of the Sale Administrator, seed, fertilizer, and mulch may also be required.

5.8 - Protection of Endangered Species

5.8.5 - Protection of Raptor Nests (3/13)

All trees with raptor nests will be protected if found during harvesting operations. Notification will be made to the Unit Manager or his/her representative who will notify the Wildlife Biologist so an onsite evaluation and recommendation can be made, if necessary.

6 - Safety and Fire Prevention

6.2 - Signing

6.2.1 - Road Posting (10/20)

The Purchaser is responsible for posting and maintaining caution signs on Paint Pond Road and US Highway 2, from both directions, prior to beginning operations. The road must be posted at appropriate distances from the Sale Area to warn of logging activity and truck traffic. Signs must be removed when harvest operations are suspended or completed. The Purchaser will provide these signs.

7 - Other Conditions

7.2 - Extensions

7.2.6 - Forest Health Extension (6/13)

This sale contains trees infected with oak wilt. It is considered at high risk for mortality and/or loss of timber value. The sale must be harvested promptly. One (1), twelve (12) month extension can be applied to one (1) other State Forest Timber Sale Contract owned by the Purchaser or owned by one (1) designated sub-contractor of the Purchaser that works this contract. To qualify, the contract expiration date of the contract to be extended must be within twelve (12) months from the issue date of this contract. If this is the first extension on the other State Forest Timber Sale Contract, then the 5% extension fee will be waived. If this is an additional extension, the 10% fee will be reduced to 5%. The forest health extension must be used before this contract is closed out. This specification does not alleviate the Purchaser from any contractual obligations of the extended State Forest Timber Sale Contract. Per General Condition & Requirement 7.2, extensions are at the sole discretion of the DNR.

7.3 - Contract Modifications

7.3.2 - Modification for Oak Wilt (2/05)

Within the Sale Area, there may be patches of oak wilt. If oak wilt is identified within the Sale Area, this contract may be modified. The following modifications could occur: time of cutting, species to cut, volume to harvest, or various others dealing with the treatment of oak wilt. If a species is not specified in this contract, it shall be paid for at the average price received for that species and product.

7.3.3 - Modification for Reforestation (8/05)

When contractual work of Purchaser has been accepted for any Payment Unit identified on Sale Area Map, Payment Unit will be eliminated from the Sale Area on written notice so that reforestation operations can begin.

7.5 - Loss

7.5.1 - Deteriorating Timber (7/09)

The Sale Area has received damage from oak wilt. The Purchaser should harvest the wood as soon as possible. The Department of Natural Resources is held free of responsibility of any further damage or deterioration due to delay in harvesting.

**TIMBER SALE MAP**

This information provided by authority of Part 525, 1994 PA 451, as amended.

Sale Number

12-054-26

Date

10/16/2025

Forest Management Unit

Crystal Falls Mgt Unit

County

Iron

Mapped By: Brolin

Cruised By: Brolin

Scale

1:10,000

Page

1

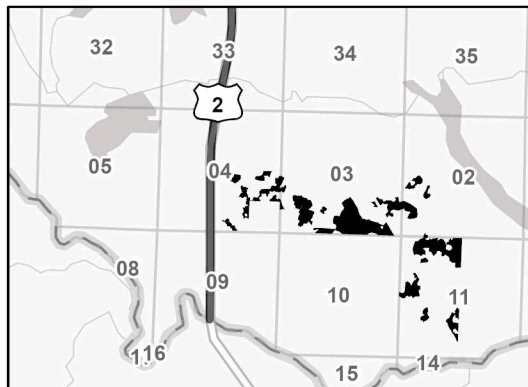
Of

3Township
41NRange
32WSection(s) and
Subdivision(s) SWNE,N1/2SE,SWSE;
Sec. 11 N1/2NW,SWNW,N1/2SW,SESW; Sec. 2 SWNW,W1/2SW; Sec. 3 SW,SE; Sec. 4**Cover Type**

A = Aspen	J = Jack Pine	O = Oak	U = Upland Brush
B = Paper Birch	K = Rock	P = Lowland Poplar	UM = Upland Mix Forest
C = Cedar	L = Lowland Brush	Q = Mixed Swamp Conifer	V = Bog or Marsh
D = Treed Bog	LM = Lowland Mix Forest	R = Red Pine	W = White Pine
E = Swamp Hardwoods	M = Maple, Beech, Birch	S = Black Spruce	X = Non Stocked
F = Spruce/Fir	MC = Mixed Conifer	T = Tamarack	Y = Sand
G = Grass	MD = Mixed Deciduous	Z = Water	
H = Hemlock	N = Marsh		

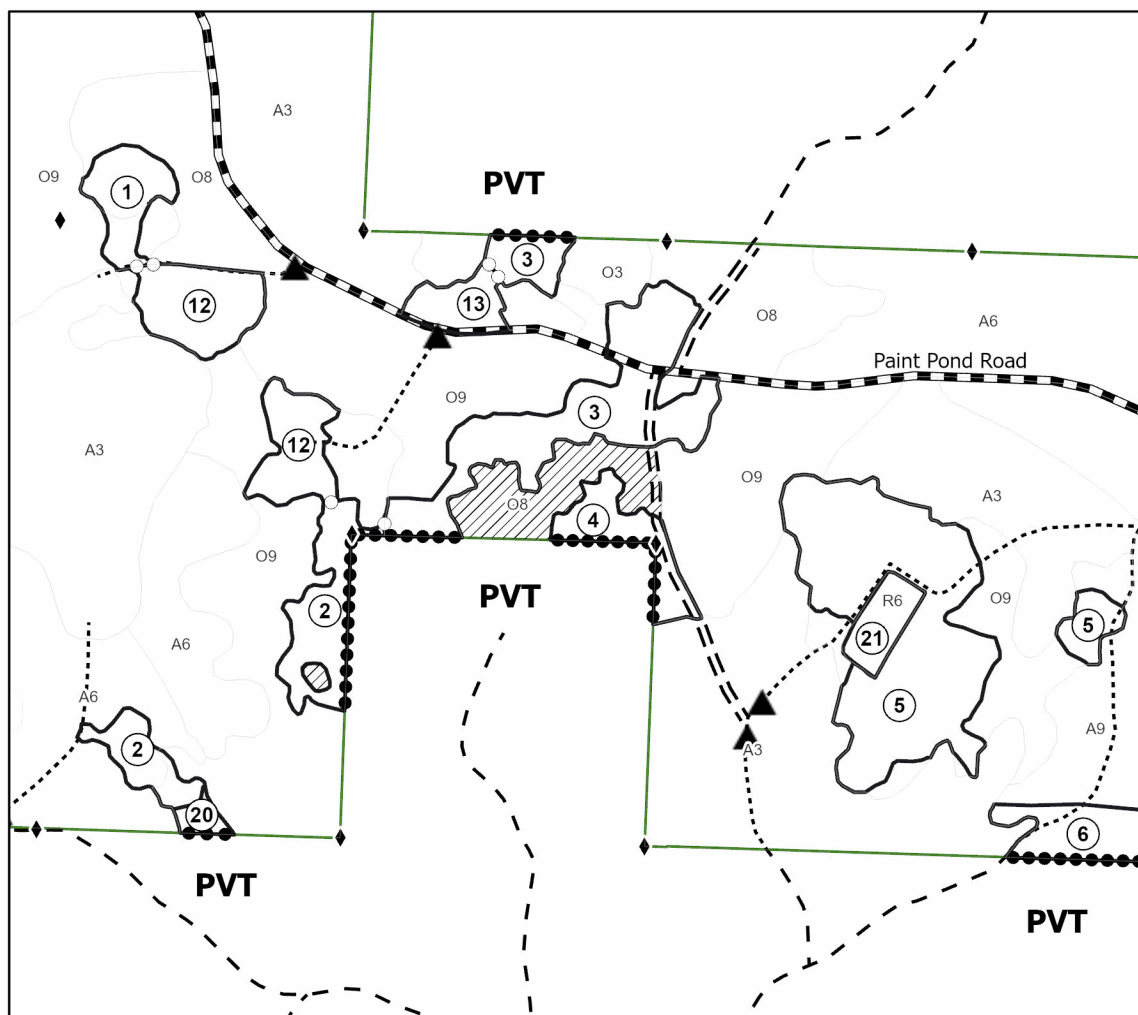
Density

0 = Non Stocked	5 = Pole Timber Medium
1 = Seedling Sapling Poor	6 = Pole Timber Well
2 = Seedling Sapling Medium	7 = Saw Timber Poor
3 = Seedling Sapling Well	8 = Saw Timber Medium
4 = Pole Timber Poor	9 = Saw Timber Well

Locator Map 1:100,000**Wilted Crown****Compartment 173
190.0 Acres**

Payment Unit Number	Acres	Payment Unit Number	Acres	Payment Unit Number	Acres
1	2.9	9	2.1	17	15.4
2	6.3	10	3.9	18	15.2
3	12	11	3.3	19	8.3
4	3	12	7.3	20	0.6
5	17.6	13	2.1	21	1.9
6	12.7	14	12.4	22	25.4
7	4.7	15	11.5		
8	7	16	14.5		

0 0.13 0.25 0.5 Miles

**Legend**

- Against State (Red)
- Private Line (Blue)
- Payment Unit (Yellow)
- State Forests
- Forest Access Route
- Administrative Access Only
- Government Gravel/Dirt
- Private Gravel/Dirt
- Survey Corner
- Retention Area
- Stream
- Berm

Use QR Code to
open Map in App



TIMBER SALE MAP

This information provided by authority of Part 525, 1994 PA 451, as amended.

Sale Number

12-054-26

Date

10/16/2025

Forest Management Unit

County

Mapped By: Brolin

Scale

Page

Of

Crystal Falls Mgt Unit

Iron

Cruised By: Brolin

1:12,000

3

3

Township
41N

Range
32W

Section(s) and SWNE,N1/2SE,SWSE;
Subdivision(s) Sec. 11 N1/2NW,SWNW,N1/2SW,SESW; Sec. 2 SWNW,W1/2SW; Sec. 3 SW,SE; Sec. 4

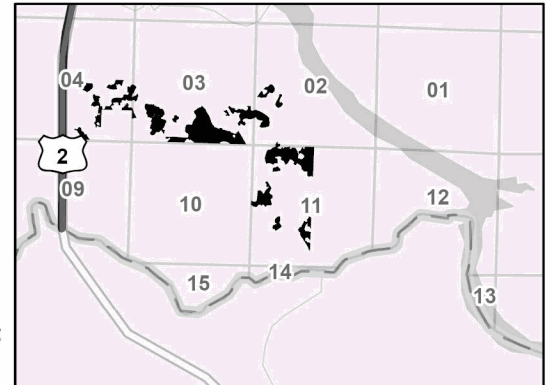
Cover Type

A = Aspen	J = Jack Pine	O = Oak	U = Upland Brush
B = Paper Birch	K = Rock	P = Lowland Poplar	UM = Upland Mix Forest
C = Cedar	L = Lowland Brush	Q = Mixed Swamp Conifer	V = Bog or Marsh
D = Treed Bog	LM = Lowland Mix Forest	R = Red Pine	W = White Pine
E = Swamp Hardwoods	M = Maple, Beech, Birch	S = Black Spruce	X = Non Stocked
F = Spruce/Fir	MC = Mixed Conifer	T = Tamarack	Y = Sand
G = Grass	MD = Mixed Deciduous		Z = Water
H = Hemlock	N = Marsh		

Density

0 = Non Stocked	5 = Pole Timber Medium
1 = Seedling Sapling Poor	6 = Pole Timber Well
2 = Seedling Sapling Medium	7 = Saw Timber Poor
3 = Seedling Sapling Well	8 = Saw Timber Medium
4 = Pole Timber Poor	9 = Saw Timber Well

Locator Map 1:100,000

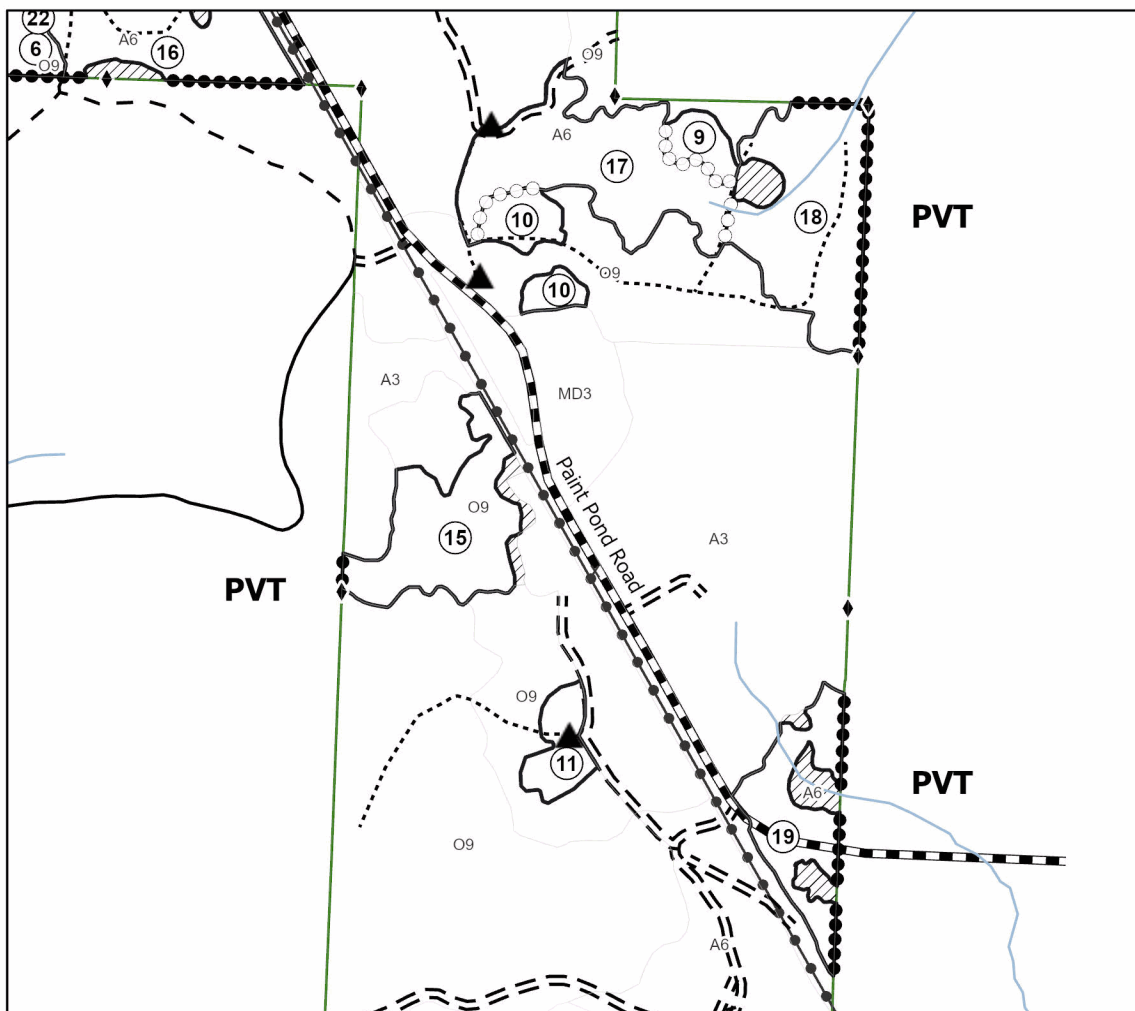


Wilted Crown

Compartment 173
190.0 Acres

Payment Unit Number	Acres	Payment Unit Number	Acres	Payment Unit Number	Acres
1	2.9	9	2.1	17	15.4
2	6.3	10	3.9	18	15.2
3	12	11	3.3	19	8.3
4	3	12	7.3	20	0.6
5	17.6	13	2.1	21	1.9
6	12.7	14	12.4	22	25.4
7	4.7	15	11.5		
8	7	16	14.5		

0 0.13 0.25 0.5 Miles



Legend

- Against State (Red)
- Private Line (Blue)
- Payment Unit (Yellow)
- State Forests
- Forest Access Route
- Administrative Access Only
- Paved Road
- Government Gravel/Dirt
- Private Gravel/Dirt
- Survey Corner
- Powerline
- Retention Area
- Stream
- Berm

Use QR Code to
open Map in App





TIMBER SALE MAP

This information provided by authority of Part 525, 1994 PA 451, as amended.

Sale Number

12-054-26

Date

10/16/2025

Forest Management Unit

County

Mapped By: Brolin

Scale

Page

Of

Crystal Falls Mgt Unit

Iron

Cruised By: Brolin

1:11,000

2

3

Township
41N

Range
32W

Section(s) and Subdivision(s) SWNE,N1/2SE,SWSE;
Sec. 11 N1/2NW,SWNW,N1/2SW,SESW; Sec. 2 SWNW,W1/2SW; Sec. 3 SW,SE; Sec. 4

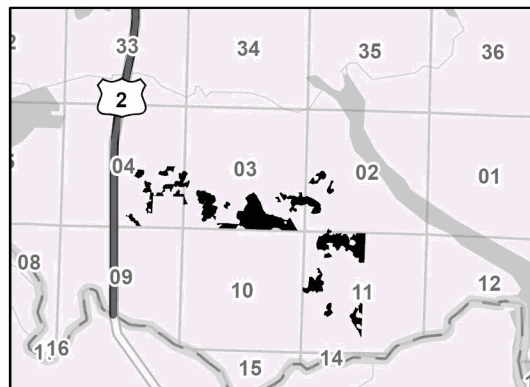
Cover Type

A = Aspen	J = Jack Pine	O = Oak	U = Upland Brush
B = Paper Birch	K = Rock	P = Lowland Poplar	UM = Upland Mix Forest
C = Cedar	L = Lowland Brush	Q = Mixed Swamp Conifer	V = Bog or Marsh
D = Treed Bog	LM = Lowland Mix Forest	R = Red Pine	W = White Pine
E = Swamp Hardwoods	M = Maple, Beech, Birch	S = Black Spruce	X = Non Stocked
F = Spruce/Fir	MC = Mixed Conifer	T = Tamarack	Y = Sand
G = Grass	MD = Mixed Deciduous		Z = Water
H = Hemlock	N = Marsh		

Density

0 = Non Stocked	5 = Pole Timber Medium
1 = Seedling Sapling Poor	6 = Pole Timber Well
2 = Seedling Sapling Medium	7 = Saw Timber Poor
3 = Seedling Sapling Well	8 = Saw Timber Medium
4 = Pole Timber Poor	9 = Saw Timber Well

Locator Map 1:100,000

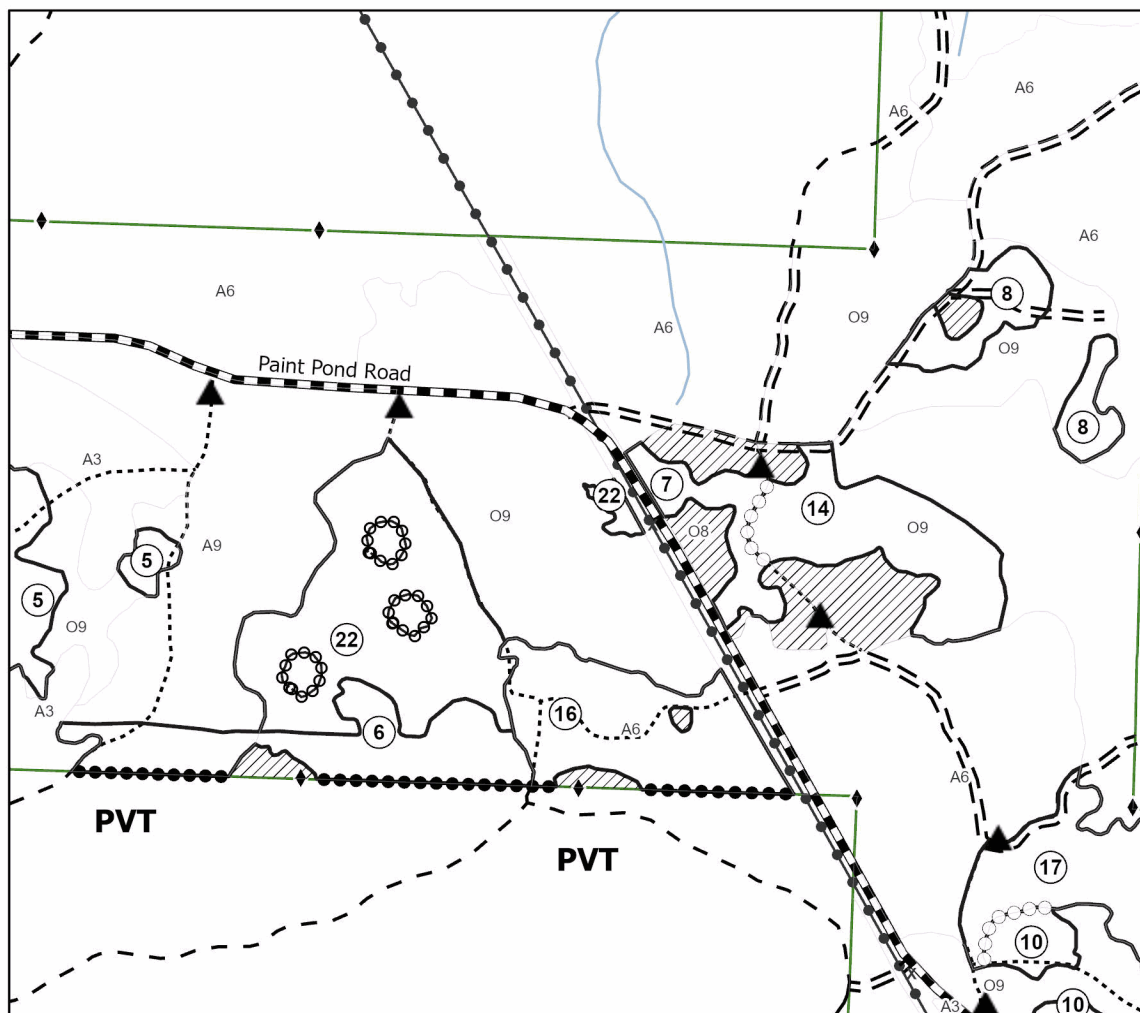


Wilted Crown

Compartment 173
190.0 Acres

Payment Unit Number	Acres	Payment Unit Number	Acres	Payment Unit Number	Acres
1	2.9	9	2.1	17	15.4
2	6.3	10	3.9	18	15.2
3	12	11	3.3	19	8.3
4	3	12	7.3	20	0.6
5	17.6	13	2.1	21	1.9
6	12.7	14	12.4	22	25.4
7	4.7	15	11.5		
8	7	16	14.5		

0 0.13 0.25 0.5 Miles



Legend

- Against State (Red)
- Gap Cut (Yellow)
- Private Line (Blue)
- Payment Unit (Yellow)
- State Forests
- Forest Access Route
- Administrative Access Only
- Paved Road
- Government Gravel/Dirt
- Private Gravel/Dirt
- Survey Corner
- Powerline
- Retention Area
- Stream
- Berm

Use QR Code to
open Map in App



GNA2 Sockeye (11-801-26)

T46N, R38W, SEC. 10; T46N, R38W, SEC. 11; T46N, R38W, SEC. 12; T46N,

In response to the notice of sale to be held 9:00 a.m. (local time) on December 11, 2025, I am hereby submitting my sealed bid (firm offer) for the following forest products to be cut. Bids for individual species must be at or above the advertised price. All non-responsive bid forms may be rejected.

<u>PRODUCTS & SPECIES</u>	<u>ESTIMATED VOLUME*</u>	<u>ADVERTISED PRICE</u>	<u>BID PRICE/UNIT</u>
Sawtimber			
Basswood	216.6 MBF	\$ 56.00/MBF	\$ _____
Black Cherry	1.3 MBF	\$ 39.00/MBF	\$ _____
Paper Birch	5.4 MBF	\$ 83.00/MBF	\$ _____
Red Maple	78.0 MBF	\$ 176.00/MBF	\$ _____
Red Pine	61.4 MBF	\$ 114.00/MBF	\$ _____
Sugar Maple	446.7 MBF	\$ 304.00/MBF	\$ _____
Yellow Birch	16.7 MBF	\$ 130.00/MBF	\$ _____
Pulpwood			
Balsam Fir	154 Cords	\$ 5.25/Cord	\$ _____
Basswood	466 Cords	\$ 5.20/Cord	\$ _____
Mixed Aspen	1,008 Cords	\$ 18.60/Cord	\$ _____
Mixed Hardwood	7,159 Cords	\$ 12.55/Cord	\$ _____
Mixed Spruce	88 Cords	\$ 11.10/Cord	\$ _____
Red Pine	67 Cords	\$ 75.05/Cord	\$ _____

*The volumes are statistically estimated within plus (+) or minus (-) 6.52 percent at 95% confidence level. These estimated volumes are final and not subject to adjustment. Prospective bidders are urged to examine this timber and to make their own estimates of quantity and quality.

I understand that any or all bids may be rejected. All bids must be signed and all bid items must be bid or the bid form may be rejected. I also understand that consideration and awarding a contract will be based upon my past performance and ability to complete the contract based upon equipment and staffing subject to my control.

FEDERAL ID: ____-____-____ or SOCIAL SECURITY NUMBER: ____-____-____

Company or individual bidding: _____

Company representative's name: _____

Address: _____

City: _____ State: _____ Zip: _____

IF AVAILABLE, PLEASE PLACE THE PERSONALIZED LABEL FROM YOUR PROSPECTUS IN THE ABOVE BOX.

Individual or company representative's signature: _____ Date: _____

Phone number : _____ Email (optional): _____

THE WINNING BIDDER MUST COMPLETE THE VERIFICATION OF WORKER'S DISABILITY COMPENSATION ACT COMPLIANCE (ON REVERSE SIDE IF DOUBLE SIDED) WITHIN 21 DAYS OF SALE AWARD DATE



TIMBER SALE VERIFICATION OF WORKER'S DISABILITY COMPENSATION ACT COMPLIANCE

As required by Act 317, P.A. 1969 (Worker's Compensation) and
Part 5 of Act 451 of 1994, as amended.

FOR DEPARTMENT USE ONLY

Sale Number (XX - XXX - XX - XX)

Forest Management Unit:

VERIFICATION OF WORKER'S DISABILITY COMPENSATION ACT COMPLIANCE

- This verification must be completed and submitted within 21 days of contract award and prior to the issuance of the timber sale contract.
- In addition, if boxes 2B or 2C are checked, then Notice of Exclusion or Certificate of Insurance must be submitted within twenty-one (21) days of the contract award and prior to the issuance of the timber sale contract.
- All information must be typed or printed except for written signatures.

Please Check Appropriate Categories:

1. My business is organized as (you **must** check one of the boxes below):
 - A. ☐ Sole Proprietorship (individual)
 - B. ☐ Partnership
 - C. ☐ Corporation
2. You **must** check one of the boxes below:
 - A. ☐ I certify my business is a sole proprietorship and it has no employees but the sole proprietor. I am not subject to the Worker's Compensation Laws.
 - B. ☐ I certify my business has satisfied its obligation to the Worker's Compensation Act through the use of an approved Notice of Exclusion (BWC-337, Rev. 5/96). I will provide a copy of the Notice of Exclusion within 21 days of the contract award. (For questions or a copy of the BWC-337, please call the Worker's Compensation Bureau at 517-322-1195).
 - C. ☐ I certify my business has a Worker's Compensation Policy. I will provide an original Certificate of Insurance within twenty-one (21) days of the contract award.
3. If you have checked item 2(A) or 2(B), you **must** indicate the number of **both** full-time and part-time employees, other than yourself, including family members and active partners (if none, you must enter "0").

_____ Full-time Employees

_____ Part-time Employees

Name of Business		Federal ID (or) Social Security No.
Address		Telephone ()
City	State	ZIP

I hereby certify that the above information is true and correct. I agree to notify the Michigan DNR of any changes that occur in factors affecting my coverage during any of my present and future operations.

Signature of Owner or Authorized Representative

Title

Date

Please complete the "SEALED BID" information on the next page

Bear Bait 26 (11-016-26)

T51N, R37W, SEC. 24; T51N, R37W, SEC. 25; Ontonagon COUNTY

In response to the notice of sale to be held 9:00 a.m. (local time) on December 11, 2025, I am hereby submitting my sealed bid (firm offer) for the following forest products to be cut. Bids for individual species must be at or above the advertised price. All non-responsive bid forms may be rejected.

<u>PRODUCTS & SPECIES</u>	<u>ESTIMATED VOLUME*</u>	<u>ADVERTISED PRICE</u>	<u>BID PRICE/UNIT</u>
Sawtimber			
Basswood	2.2 MBF	\$ 56.00/MBF	\$ _____
Red Maple	85.7 MBF	\$ 176.00/MBF	\$ _____
Sugar Maple	49.9 MBF	\$ 304.00/MBF	\$ _____
Yellow Birch	4.5 MBF	\$ 130.00/MBF	\$ _____
Pulpwood			
Balsam Fir	12 Cords	\$ 5.25/Cord	\$ _____
Mixed Hardwood	1,049 Cords	\$ 12.55/Cord	\$ _____

*The volumes are statistically estimated within plus (+) or minus (-) 15.74 percent at 95% confidence level. These estimated volumes are final and not subject to adjustment. Prospective bidders are urged to examine this timber and to make their own estimates of quantity and quality.

I understand that any or all bids may be rejected. All bids must be signed and all bid items must be bid or the bid form may be rejected. I also understand that consideration and awarding a contract will be based upon my past performance and ability to complete the contract based upon equipment and staffing subject to my control.

FEDERAL ID: ____ - ____ - ____ or SOCIAL SECURITY NUMBER: ____ - ____ - ____

Company or individual bidding: _____

Company representative's name: _____

Address: _____

City: _____ State: _____ Zip: _____

IF AVAILABLE, PLEASE PLACE THE PERSONALIZED LABEL FROM YOUR PROSPECTUS IN THE ABOVE BOX.

Individual or company representative's signature: _____ Date: _____

Phone number : _____ Email (optional): _____

**THE WINNING BIDDER MUST COMPLETE THE VERIFICATION OF WORKER'S DISABILITY COMPENSATION ACT
COMPLIANCE (ON REVERSE SIDE IF DOUBLE SIDED) WITHIN 21 DAYS OF SALE AWARD DATE**



TIMBER SALE VERIFICATION OF WORKER'S DISABILITY COMPENSATION ACT COMPLIANCE

As required by Act 317, P.A. 1969 (Worker's Compensation) and
Part 5 of Act 451 of 1994, as amended.

FOR DEPARTMENT USE ONLY

Sale Number (XX - XXX - XX - XX)

Forest Management Unit:

VERIFICATION OF WORKER'S DISABILITY COMPENSATION ACT COMPLIANCE

- This verification must be completed and submitted within 21 days of contract award and prior to the issuance of the timber sale contract.
- In addition, if boxes 2B or 2C are checked, then Notice of Exclusion or Certificate of Insurance must be submitted within twenty-one (21) days of the contract award and prior to the issuance of the timber sale contract.
- All Information must be typed or printed except for written signatures.

Please Check Appropriate Categories:

1. My business is organized as (you **must** check one of the boxes below):
 - A. ☐ Sole Proprietorship (individual)
 - B. ☐ Partnership
 - C. ☐ Corporation
2. You **must** check one of the boxes below:
 - A. ☐ I certify my business is a sole proprietorship and it has no employees but the sole proprietor. I am not subject to the Worker's Compensation Laws.
 - B. ☐ I certify my business has satisfied its obligation to the Worker's Compensation Act through the use of an approved Notice of Exclusion (BWC-337, Rev. 5/96). I will provide a copy of the Notice of Exclusion within 21 days of the contract award. (For questions or a copy of the BWC-337, please call the Worker's Compensation Bureau at 517-322-1195).
 - C. ☐ I certify my business has a Worker's Compensation Policy. I will provide an original Certificate of Insurance within twenty-one (21) days of the contract award.
3. If you have checked item 2(A) or 2(B), you **must** indicate the number of **both** full-time and part-time employees, other than yourself, including family members and active partners (if none, you must enter "0").

_____ Full-time Employees

_____ Part-time Employees

Name of Business		Federal ID (or) Social Security No.
Address		Telephone ()
City	State	ZIP

I hereby certify that the above information is true and correct. I agree to notify the Michigan DNR of any changes that occur in factors affecting my coverage during any of my present and future operations.

Signature of Owner or Authorized Representative

Title

Date

Please complete the "SEALED BID" information on the next page

Wilted Crown (12-054-26)

T41N, R32W, SEC. 11; T41N, R32W, SEC. 2; T41N, R32W, SEC. 3; T41N, R32W,

In response to the notice of sale to be held 9:00 a.m. (local time) on December 11, 2025, I am hereby submitting my sealed bid (firm offer) for the following forest products to be cut. Bids for individual species must be at or above the advertised price. All non-responsive bid forms may be rejected.

<u>PRODUCTS & SPECIES</u>	<u>ESTIMATED VOLUME*</u>	<u>ADVERTISED PRICE</u>	<u>BID PRICE/UNIT</u>
Sawtimber			
Paper Birch	3.5 MBF	\$ 83.00/MBF	\$ _____
Red Maple	18.3 MBF	\$ 176.00/MBF	\$ _____
Red Oak	1,182.0 MBF	\$ 155.00/MBF	\$ _____
Pulpwood			
B. T. Aspen	521 Cords	\$ 18.60/Cord	\$ _____
Ironwood	4 Cords	\$ 12.55/Cord	\$ _____
Paper Birch	37 Cords	\$ 5.20/Cord	\$ _____
Quaking Aspen	1,523 Cords	\$ 18.60/Cord	\$ _____
Red Maple	324 Cords	\$ 12.55/Cord	\$ _____
Red Oak	1,544 Cords	\$ 15.45/Cord	\$ _____
Red Pine	140 Cords	\$ 75.05/Cord	\$ _____
Sugar Maple	9 Cords	\$ 12.55/Cord	\$ _____

*The volumes are statistically estimated within plus (+) or minus (-) 8.99 percent at 95% confidence level. These estimated volumes are final and not subject to adjustment. Prospective bidders are urged to examine this timber and to make their own estimates of quantity and quality.

I understand that any or all bids may be rejected. All bids must be signed and all bid items must be bid or the bid form may be rejected. I also understand that consideration and awarding a contract will be based upon my past performance and ability to complete the contract based upon equipment and staffing subject to my control.

FEDERAL ID: _____ or SOCIAL SECURITY NUMBER: _____

Company or individual bidding: _____

Company representative's name: _____

Address: _____

City: _____ State: _____ Zip: _____

IF AVAILABLE, PLEASE PLACE THE PERSONALIZED LABEL FROM YOUR PROSPECTUS IN THE ABOVE BOX.

Individual or company representative's signature: _____ Date: _____

Phone number : _____ Email (optional): _____

THE WINNING BIDDER MUST COMPLETE THE VERIFICATION OF WORKER'S DISABILITY COMPENSATION ACT COMPLIANCE (ON REVERSE SIDE IF DOUBLE SIDED) WITHIN 21 DAYS OF SALE AWARD DATE



TIMBER SALE
VERIFICATION OF WORKER'S DISABILITY
COMPENSATION ACT COMPLIANCE

*As required by Act 317, P.A. 1969 (Worker's Compensation) and
Part 5 of Act 451 of 1994, as amended.*

FOR DEPARTMENT USE ONLY

Sale Number (XX – XXX – XX – XX)

Forest Management Unit:

VERIFICATION OF WORKER'S DISABILITY COMPENSATION ACT COMPLIANCE

- This verification must be completed and submitted within 21 days of contract award and prior to the issuance of the timber sale contract.
- In addition, if boxes 2B or 2C are checked, then Notice of Exclusion or Certificate of Insurance must be submitted within twenty-one (21) days of the contract award and prior to the issuance of the timber sale contract.
- All information must be typed or printed except for written signatures.

Please Check Appropriate Categories:

1. My business is organized as (you **must** check one of the boxes below):
 - A. ☐ Sole Proprietorship (individual)
 - B. ☐ Partnership
 - C. ☐ Corporation
2. You **must** check one of the boxes below:
 - A. ☐ I certify my business is a sole proprietorship and it has no employees but the sole proprietor. I am not subject to the Worker's Compensation Laws.
 - B. ☐ I certify my business has satisfied its obligation to the Worker's Compensation Act through the use of an approved Notice of Exclusion (BWC-337, Rev. 5/96). I will provide a copy of the Notice of Exclusion within 21 days of the contract award. (For questions or a copy of the BWC-337, please call the Worker's Compensation Bureau at 517-322-1195).
 - C. ☐ I certify my business has a Worker's Compensation Policy. I will provide an original Certificate of Insurance within twenty-one (21) days of the contract award.
3. If you have checked item 2(A) or 2(B), you **must** indicate the number of **both** full-time and part-time employees, other than yourself, including family members and active partners (if none, you must enter "0").

_____ Full-time Employees

_____ Part-time Employees

Name of Business		Federal ID (or) Social Security No.
Address		Telephone ()
City	State	ZIP

I hereby certify that the above information is true and correct. I agree to notify the Michigan DNR of any changes that occur in factors affecting my coverage during any of my present and future operations.

Signature of Owner or Authorized Representative

Title

Date

Please complete the "SEALED BID" information on the next page