



**DEPARTMENT OF NATURAL RESOURCES
STATE OF MICHIGAN
TIMBER SALE PROSPECTUS #7687**

SCHEDULED SALE DATE AND TIME: 2:00 p.m. (local time) on December 15, 2025.

LOCATION: GWINN MGMT UNIT, 410 WEST M 35, GWINN, MI 49841.

PROSPECTUS NOTE: The bidder is advised to inspect the sale area and review the location, estimated volumes, operating costs and contract terms of proposed sales. Please be aware that some landowners may request 60 days or more notice for access across their land.

Notice is hereby given that bids will be received by the Unit Manager, GWINN MANAGEMENT UNIT, for certain timber on the following described lands:

Ridge Runner Hardwood (32-006-25) / T46N, R25W, SEC. 12, N1/2NW,NE.

Marquette County, Advertised Price \$18,526.65, 70.0 Acres, Hardwood, Red Oak.

SALE NOTE: There are areas of steep terrain in the sale area that will require hand felling of trees. The sale area has oak wilt and bark slip restrictions. Several old landline boxes are present along access roads.

Little Badger Den Mix (32-017-25) / T43N, R25W, SEC. 21, NESE.

T43N, R25W, SEC. 22, NWSW.

T43N, R25W, SEC. 28, S1/2NW,SW,W1/2SE.

T43N, R25W, SEC. 29, SENE,E1/2SE.

T43N, R25W, SEC. 33, N1/2NW,SE,NW,NE,NESE.

T43N, R25W, SEC. 34, W1/2NW,NWSW.

Marquette County, Advertised Price \$112,430.40, 252.1 Acres, Aspen, Sugar Maple.

SALE NOTE: A snowmobile/ORV trail runs through the sale area.

This sale contains operating restrictions between 12/01 and 04/01 due to wet ground and deer winter ranges. There are also Units that are restricted between 04/15 and 07/15 due to bark slippage. The south line of the sale boundary on Payment Units 10 and 11 are not marked with red paint. See spec 1.2.1.

A recreation site such as a trail, pathway, or campground is within the sale area or the vicinity. Certain restrictions/specifications may be applicable including time restrictions.

North Smoke Mix (32-018-25) / T43N, R25W, SEC. 28, W1/2SW.

T43N, R25W, SEC. 29, S1/2NE,SE.

T43N, R25W, SEC. 32, NE,NESE.

T43N, R25W, SEC. 33, SW,NW,NWSW.

Marquette County, Advertised Price \$66,041.65, 112.0 Acres, Aspen, Spruce/Fir/Tamarack.

SALE NOTE: A snowmobile and ORV trail run through the sale area.

Three Special Protection Areas exist in the Sale Area. These are identified on the timber sale map.

This sale contains operating restrictions between 12/01 and 04/01 due to wet ground and deer winter ranges. There is also a Unit that is restricted between 04/15 and 07/15 due to bark slippage.

A recreation site such as a trail, pathway, or campground is within the sale area or the vicinity. Certain restrictions/specifications may be applicable including time restrictions.

BID INSTRUCTIONS (VER. 10/10/2022):

1. Scheduled Bid Location, Date, and Time (2/11)

Bids must be received by the Unit Manager, GWINN OFFICE, 410 WEST M 35, GWINN, MI 49841, no later than 2:00 p.m. (local time) on December 15, 2025. For further information concerning this sale, contact Mike Brodeur at 906-346-9201 extension 103.

2. Bidder's Qualifications (10/22)

If all or part of a timber sale was prepared by a private contractor, the contractor and that contractor's company are not permitted to bid on the timber sale. A person must be 18 years of age or older to purchase timber. Permanent employees of the Department of Natural Resources or members of their immediate household may not bid. Former employees, in the permanent or seasonal class, may not bid until 3 months after the last day of active duty. Bids will not be accepted from individuals or companies appearing on the DNR/FRD No-Bid List. This list contains the names of purchasers who previously failed to execute a contract within 21-days or who have a history of poor performance.

3. Preparation of Sealed Bids (5/16)

Bid Forms may be completed online thru Michigan DNR Timber Sale Online Bidding (OLB) at www.michigan.gov/timberbidding or by completing the hardcopy Bid Form found in the Timber Sale Prospectus. Hardcopy Bid Forms shall be manually signed in ink. Registration in OLB is considered your 'signature' for all bids submitted thru that system. Bid prices must be entered for each species and product in the Bid Price column for all material subject to bidding and all fill-in blanks must be completed. If erasures or other changes appear on the hardcopy Bid Form, each erasure or change must be initialed by the person signing the bid.

4. Submission of Sealed Bids (5/16)

Bid forms may be obtained from the Unit Manager or thru OLB. Bids may be submitted hardcopy or thru OLB. All hardcopy bids must be submitted on the bid form and in an envelope clearly identified as described in this section. NOTE: Only one bid form per bid envelope. Sealed bids must be submitted to the Unit office designated in the prospectus and must be submitted at or prior to the time established in the prospectus. The envelope should show on the outside (a) the sale name or number and (b) the date and time of bid opening, as shown in the prospectus. Bids received after the time specified in the sale prospectus are late bids and will be rejected.

It is possible for a bidder to submit multiple bids on a single sale. For example, a bid may be submitted hardcopy and a bid may be submitted thru OLB. Or, two bidders from the same company could both submit bids on the same sale. If this were to happen, the State would accept all bids received and award the contract accordingly. All bidding and contractual requirements would apply to all bids received.

5. Public Opening of Sealed Bids (7/16)

If conditions permit, the sealed bids will be publicly opened and posted at the time and place set in the prospectus.

If a bidder, present at a bid opening, has submitted bids on more than one sale, that bidder may withdraw their unopened bid envelopes or announce the withdrawal of their online bid after being declared the successful bidder on one sale.

6. Award of Contract (1/11)

Award of the contract will be made to the Bidder whose bid, conforming to the prospectus, is most advantageous to the State of Michigan on the basis of total value at rates bid for the estimated quantities. The State reserves the right to reject any bid or waive any minor irregularity in bids received. A written award mailed (or otherwise furnished) to the successful Bidder shall be deemed to result in a binding contract without further action by either party.

7. Down Payment (1/11)

The Bidder to whom award is made must make a down payment within 21 days of the sale award. The amount of the down payment will be calculated as shown in the Bond and Payment Schedule of this prospectus. Only cash may be used to meet this requirement.

8. Performance Security (1/11)

As guarantee of faithful performance, a cash bond, certificate of deposit, surety bond or irrevocable letter of credit (LOC) is required within 21 days of the sale award. The amount of the performance security is shown in the Bond and

Payment Schedule of this prospectus. If an LOC or surety is used, the coverage must extend for at least 6 months beyond the contract expiration.

9. Worker's Compensation (10/22)

Purchaser shall obtain worker's compensation insurance to cover claims under Michigan's Worker's Disability Compensation Act of 1969 or similar employee benefit act of any other state applicable to an employee. Verification of Worker's Disability Compensation Act Compliance must be completed and submitted within 21 days of contract award and prior to the issuance of the timber sale contract. In addition, if applicable, Notice of Exclusion or Certificate of Insurance must also be submitted.

10. Timber Sale Contract (10/22)

Additional conditions and requirements common to all timber sales are listed on the timber sale contract (R4031) and are available on line at www.michigan.gov/timber. Contact the Unit Manager for additional information or a sample contract. Within 21 days of the date of the award letter, the bidder must sign the contract and provide the required down payment, performance security, and verification of worker's disability compensation. The down payment and performance security shall be in accordance with the provisions of the timber sale contract, in the sums stated in this prospectus. If these actions are not taken, then the Bidder, the Bidder's corporation, and the corporation's principals may not be permitted to bid on State timber sales for a period of 3 months after the first offense, 6 months after the second offense, and 1 year after the third offense. An offense will only be counted against the Bidder for 5 years. In addition, the Bidder certifies that if awarded this contract, the Bidder will complete the timber sale contract in accordance with its terms and any modifications thereof including requirements to purchase, cut, and remove the included timber by the expiration date.

Payment Unit values in the State Forest Timber Sale Contract are calculated based on the advertised value of the Payment Unit as a percentage of the total advertised value of the contract. The advertised value of each Payment Unit is given in the Description of Timber by Payment Unit table on the Timber Sale Information page. For example, if the value of Payment Unit 1 is advertised as \$1,500 and the total Timber Sale value is advertised as \$10,000, the contract price for Payment Unit 1 will be 15% of the total bid price ($\$1,500/\$10,000 * 100$).

11. Disclaimer of Estimates and Bidder's Warranty of Inspection (10/22)

Before submitting this bid, the Bidder is advised and cautioned to inspect the sale area, review the requirements of the sale contract, and take other steps as may be reasonably necessary to ascertain the location, estimated volumes, construction estimates, and operating costs of the proposed sale. Failure to do so will not relieve the Bidder from responsibility for completing the contract.

The Bidder warrants that this bid is submitted solely on the basis of the Bidder's examination and inspection of the quality and quantity of the timber offered for sale and the Bidder's opinion of the value thereof and the costs of recovery. No reliance should be placed on the State of Michigan's estimates of timber quality, quantity or costs of recovery. Bidder further acknowledges that the State of Michigan: (i) expressly disclaims any warranty of fitness of timber for any purpose; (ii) offers this timber as is without any warranty of quality (merchantability) or quantity and (iii) expressly disclaims any warranty as to the quantity or quality of timber sold.

12. Certification and Chain-of-Custody (10/22)

Unless otherwise indicated in the contract under section 7 – Other Conditions of the Sale Specific Conditions & Requirements, the area encompassed by this timber sale is certified to the standards of the Forest Stewardship Council (FSC) - Certificate #SCS-FM/COC-00090N and the Sustainable Forestry Initiative (SFI) - Certificate #NSF-SFIS-5Y031-SF5. Forest products from this sale may be delivered to the mill as "FSC 100% and / or SFI certified" as long as the contractor hauling the forest products is chain-of-custody (COC) certified or covered under a COC certificate from the destination mill. The purchaser is responsible for maintaining COC after leaving the sale area.

13. Good Neighbor Authority (GNA) Requirements (10/22)

If the name of this timber sales contains the acronym GNA, it is authorized by the Good Neighbor Authority (GNA) and covered by various agreements between the U.S. Forest Service and the State. The timber sale occurs on federal land and the following conditions apply:

GNA contracts on US Forest Service land will not be awarded to purchasers on the Federal list of excluded parties. The System for Award Management (SAM) will be checked for active excluded parties prior to award of contract. In

addition, the Bidder to whom award is made must complete an Assurance Regarding Felony Conviction or Tax Delinquent Status for Corporate Applicants (AD-3031).

14. Good Neighbor Authority (GNA) Requirements, con't (10/22)

Bidder certifies, by signing this bid form, that to the best of Bidder's knowledge that the following representations are accurate and complete.

- a. That the Bidder and its principals are not presently debarred, suspended, proposed for debarment, declared ineligible, or voluntary excluded from timber sales (covered transactions) by any Federal department or agency.
- b. That the Bidder and its principals have not within a 3-year period preceding this bid been convicted of or had a civil judgment rendered against them for commission of fraud or a criminal offense in connection with obtaining , attempting to obtain, or performing a public (Federal, State, or local) transaction or contract under a public transaction; violation of Federal or State antitrust statutes or commission of embezzlement, theft, forgery, bribery, falsification or destruction of records, making false statements, or receiving stolen property.
- c. That the Bidder and its principals are not presently indicted for or otherwise criminally or civilly charged by a governmental entity (Federal, State, or local) with commission of any of the offenses enumerated in paragraph b of this certification.
- d. That the Bidder and its principals have not within a 3-year period preceding this bid had one or more public transactions (Federal, State, or local) terminated for breach or default of a timber or forest product contract.

Bidders that cannot certify this requirement, in whole or in part, shall submit an explanation with their bid.

Scott Bowen
Director

TIMBER SALE INFORMATION

Ridge Runner Hardwood (32-006-25)
T46N, R25W, SEC. 12.
Marquette County (Advertised Price \$18,526.65)

SALE NOTE: There are areas of steep terrain in the sale area that will require hand felling of trees. The sale area has oak wilt and bark slip restrictions. Several old landline boxes are present along access roads.

A timber sale contract for this lump sum, sealed bid timber sale will be awarded to the responsible bidder offering the highest sealed bid price. All units of volume listed below were estimated using the Inventory Manager computer program and the new Michigan taper model. Bids must be at or above the following advertised price for each product and species:

<u>PRODUCTS & SPECIES</u>	<u>ESTIMATED UNITS*</u>		<u>ADVERTISED PRICE</u>
Sawtimber			
Red Maple	9.0	MBF	\$ 84.00 / MBF
Red Oak	53.9	MBF	\$ 155.00 / MBF
Sugar Maple	20.8	MBF	\$ 199.00 / MBF
Pulpwood			
Balsam Fir	19	Cords	\$ 9.35 / Cord
Mixed Hardwood	231	Cords	\$ 11.10 / Cord
Red Oak	105	Cords	\$ 14.95 / Cord
Red Pine	17	Cords	\$ 47.20 / Cord
White Pine	3	Cords	\$ 13.15 / Cord
White Spruce	12	Cords	\$ 10.30 / Cord

* The total volume is statistically estimated within plus (+) or minus (-) 20.14 percent. There are an estimated 583 cords on this timber sale, plus or minus 117 cords at the 95% confidence level. The estimated units are final and not subject to adjustment. Prospective bidders are urged to examine this timber and to make their own estimates of quantity and quality.

BOND AND PAYMENT SCHEDULE:

- A bond in the amount of \$1,853.00 to insure faithful performance of the conditions of the contract will be deposited by the successful bidder within 21 days of the sale award.
- Cutting in any sale or unit without the required advance payment would be considered a trespass.
- Total payment must be paid in advance or according to the following schedule :
 - Ten percent (10%) of the sale value must be paid within 21 days of the sale award.
 - The 10% down payment will be credited towards the first unit cut.
 - Payment for each of the following units must be made before cutting begins in that unit:

PAYMENT UNIT NUMBER	PERCENT OF TOTAL SALE VALUE
01	19.5%
02	31.6%
03	48.9%
- If no cutting takes place, the 10% down payment will not be refunded.
- Operations on the contract issued will terminate on 06/30/2029.

SALE STATISTICS

Volumes were calculated in cubic feet using the Michigan taper model. Cubic foot volume includes all wood inside bark for the product indicated. For display purposes, cubic feet were converted to cords and MBF using a simple conversion factor, e.g. 79 cubic feet per cord and 185 cubic feet per MBF. The cubic foot volumes are precise; the cords and MBF volumes are not. Cubic foot volume cannot be directly converted to cords or boards with precision.

SALE VOLUMES

The total estimated sale volume may not equal the sum of the species/products due to the nature of statistical calculations associated with double sampling methodology.

VOLUME			STATISTICAL RANGE IN CORDS	
TOTAL CUBIC FEET	TOTAL CORDS	PERCENT ERROR	MINIMUM	MAXIMUM
46,022	583	20.14%	465	700

VDU VOLUMES

A VDU is a Volume Determination Unit. Volumes and their associated statistics are calculated at the VDU level and summarized to the sale level. There is often a one to one relationship between a VDU and a Payment Unit, but not always, depending on the cruise design. Refer to the VDU TO PAYMENT UNIT table.

	VOLUME			RANGE IN CORDS	
VDU	TOTAL CUBIC FEET	TOTAL CORDS	PERCENT ERROR	MINIMUM	MAXIMUM
12	13,706	173	35.57%	112	235
14	22,319	283	28.74%	201	364
102	9,997	127	49.53%	64	189
TOTAL:	46,022	583		377	788

VDU TO PAYMENT UNIT

When a VDU is associated with more than one Payment Unit (PU), the VDU volumes are assigned to the PU based on acres of the VDU within the PU.

VDU	VDU ACRES	PU	PU ACRES
TOTAL:			

DESCRIPTION OF TIMBER BY PAYMENT UNIT (PU)

PU	MARKET GROUP	PRODUCT	QUANTITY	UNIT	ACRES	ADVERTISE PRICE
1	Red Oak	Sawtimber	11.1	MBF	17.7	\$3,614.00
	Mixed Hardwood	Pulpwood	23	Cords		
	Red Maple		23	Cords		
	Red Oak		45	Cords		
	Red Pine		17	Cords		
	White Pine		3	Cords		
	White Spruce		12	Cords		
2	Red Maple	Sawtimber	5.2	MBF	19.3	\$5,846.25
	Red Oak		20.8	MBF		
	Sugar Maple		4.5	MBF		
	Balsam Fir	Pulpwood	2	Cords		
	Mixed Hardwood		62	Cords		
	Red Maple		28	Cords		
	Sugar Maple		34	Cords		
	Red Oak		39	Cords		
3	Red Maple	Sawtimber	3.8	MBF	33.0	\$9,066.40
	Red Oak		22.0	MBF		
	Sugar Maple		16.3	MBF		
	Balsam Fir	Pulpwood	17	Cords		
	Mixed Hardwood		146	Cords		
	Red Maple		53	Cords		
	Sugar Maple		93	Cords		
	Red Oak		21	Cords		
TOTAL:			83.7	MBF		
TOTAL:			387	Cords		

Sale Specific Conditions & Requirements

Sale Name: Ridge Runner Hardwood

Sale Number: 32-006-25 Seq#: 1

1 - Sale Area

1.2 - Boundaries

1.2.1 - Painted Boundaries (9/19)

The sale boundaries are marked and identified by blue and red paint. Exterior sale boundary lines against private property are marked with blue paint. Exterior sale boundary lines against state are marked with red paint. Retention patches are marked with red paint; no harvesting activities may occur within these areas. The painted boundary line trees are not Included Timber and are to be protected unless marked with orange paint.

2 - Timber Specifications

2.1 - Included Timber

2.1.3 - Cut Tree Marked Unit(s) (12/08)

Within Payment Unit(s) 1-3, all trees are designated for cutting when marked with orange paint above and below stump height, regardless of merchantability.

3 - Payments

3.4 - Damaged Timber

3.4.1 - Damaged Timber (12/24)

General Condition and Requirement 3.4 Damaged Timber, defines liquidated damages for undesignated live merchantable trees which are cut or injured. In addition, extreme care should be taken to avoid damage to tree seedlings and saplings.

No damage is acceptable to undesignated live merchantable trees. Within the Sale Area, if more than 5% of trees (> 4.5" DBH) within a specified area of the sale are damaged, liquidated damages will be assessed for all trees damaged. Rates will be in accordance with General Condition and Requirement 3.4 Damaged Timber.

4 - Transportation

4.1 - Construction

4.1.3 - Slash and Earthen Piles (8/04)

Piles or windrows of earth along roads and landings that have been widened or constructed shall be leveled. Slash from road maintenance or construction, including stumps, shall be dispersed throughout the sale.

4.1.4 - Timber Removed for Construction (3/23)

Trees cut or damaged in the process of pre-approved road, landing, or skid trail construction will be decked in an area separate from other Designated Timber and not removed until measured by the Sale Administrator. Payment will be made at contract prices or average prices, if not on the contract.

4.1.6 - Road Construction (4/24)

Construction of new roads or improvements of existing roads shall be done in such a way as to minimize the environmental and visual impacts. Merchantable trees shall be cut and utilized unless otherwise directed. Non-merchantable trees shall be severed and laid flat on the ground. Slash shall be scattered, and not left in windrows and kept a minimum of 10 feet back from the road edge. Stumps shall be set upright, not left on edge, and be moved at least 10 feet away from the road edge. Disturbed soil shall be feathered into the woods and not left in berms or windrows.

4.1.7 - Road Closure (10/11)

All new roads built into the sale must be blocked to vehicle traffic upon completion of the sale. Overgrown roads that are reopened shall be considered new roads. In general, this will require constructing a four (4') foot high berm of stumps and logs covered with earth. Temporary berms may be required if no sale activity occurs for 30 or more consecutive days. Contact the Sale Administrator for specific details of design and placement.

4.1.8 - Road Work (1) (8/07)

The following road work is required: 30 yards of pit run gravel will be placed on the forest access road adjacent to Payment Unit 1. Contact Sale Administrator for exact location.

4.2 - Maintenance

4.2.1 - Hauling Restriction (12/08)

Hauling may be restricted on forest roads by the Unit Manager or his/her representative. The restriction may occur during wet weather conditions.

4.2.2 - Fill Material (4/07)

To maintain roads, fill material may be needed in areas where "holes" exist or may be expected to develop. This fill material should be placed before trucking begins. Contact the Sale Administrator regarding the availability of onsite sand or gravel from adjacent State-owned lands.

4.2.3 - Road maintenance (8/13)

The following road maintenance may be needed: Within 60 days of completion of hauling, or if no hauling occurs for 60 days, the road may need to be maintained and graded. This includes cleaning of drainage areas, grading, crowning and filling with gravel, if necessary. Damages will be assessed if grading/repair does not occur.

4.4 - Access

4.4.1 - Private property access (3/11)

Permission for access across private land is the responsibility of the Purchaser. Should the Purchaser desire to cross private land, a copy of the written permission from the private land-owner may be required by the DNR.

5 - Operations

5.1 - Notification

5.1.1 - Pre-sale Conference (10/16)

A pre-sale conference between the Purchaser and Sale Administrator is required prior to beginning any operations. The Unit Manager or his/her representative must be contacted at least 5 days in advance to schedule the conference.

5.2 - Conduct of Operations

5.2.3 - Operating Restrictions

5.2.3.3 - Bark Slippage Restriction (3/09)

Within Payment Unit(s) 1-3, unless changed by written agreement, cutting and skidding are not permitted during the period of April 15 to July 15. This restriction is because of bark slippage.

5.2.3.4 - Oak Wilt Restriction, No Exceptions (1/18)

Within the Sale Area, cutting, skidding, hauling within the sale and brushing of access roads to the sale are not permitted during the period of April 15 to July 15. No exceptions will be granted. This is necessary to reduce the spread of oak wilt.

5.2.32 - Decking/Landing Restoration (9/13)

All decking and landing areas must have the surface area restored to a condition equal to or better than before. This is to ensure the proper regeneration of the stand. Wood debris, chips and "cookies" from trimmings must be removed or scattered away from landing and loading areas and may not be windrowed on the edge.

5.2.38 - No Decking Against Live Trees (2/04)

Cut products may not be decked against unmarked or designated leave trees.

5.4 - Soil Protection

5.4.1 - Rutting Restriction, General (7/16)

Operations are to cease immediately if equipment and weather conditions result in rutting of roads and/or skid trails which is 12 inches or greater in depth and 50 feet in length. The Unit Manager or his/her representative may restrict hauling and/or skidding if ruts exceed the specified depth. With the Unit Manager or his/her representative's approval, the Purchaser may return to the area when the risk of rutting has decreased.

5.4.2 - Skid Trails (2/04)

Skid trails up and down slopes should be avoided. If, however, this is unavoidable, these trails will be left in a non-erodible condition using water bars, logs, and slash. Placing of slash on these skid trails while logging is ongoing may alleviate need for any further action. At the direction of the Sale Administrator, seed, fertilizer, and mulch may also be required.

5.4.4 - Slope Protection (9/19)

Skid trails and roads on slopes shall be water barred with slash and stumps as soon as use is complete to prevent erosion.

6 - Safety and Fire Prevention

6.2 - Signing

6.2.1 - Road Posting (10/20)

The Purchaser is responsible for posting and maintaining caution signs on Olson Road and/or Youngs Road prior to beginning operations. The road must be posted at appropriate distances from the Sale Area to warn of logging activity and truck traffic. Signs must be removed when harvest operations are suspended or completed. The Purchaser will provide these signs.



TIMBER SALE MAP

This information provided by authority of Part 525, 1994 PA 451, as amended.

Sale Number

32-006-25

Date

07/08/2025

Forest Management Unit

Gwinn Mgt Unit

County

Marquette

Mapped By: Jacob Siler

Cruised By: Gould & Siler

Scale

1:15,840

Page

1

Of

1

Township
46N

Range
25W

Section(s) and
Subdivision(s) Sec. 12 N1/2NW,NE;

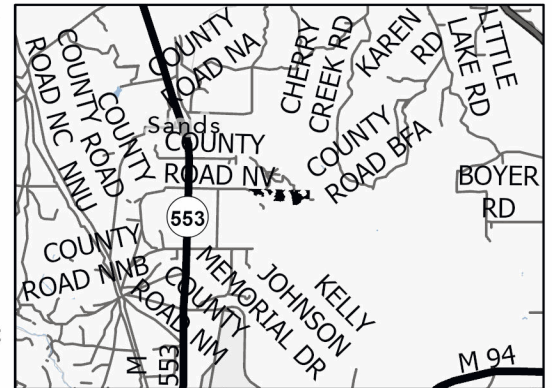
Cover Type

A = Aspen	J = Jack Pine	O = Oak	U = Upland Brush
B = Paper Birch	K = Rock	P = Lowland Poplar	UM = Upland Mix Forest
C = Cedar	L = Lowland Brush	Q = Mixed Swamp Conifer	V = Bog or Marsh
D = Treed Bog	LM = Lowland Mix Forest	R = Red Pine	W = White Pine
E = Swamp Hardwoods	M = Maple, Beech, Birch	S = Black Spruce	X = Non Stocked
F = Spruce/Fir	MC = Mixed Conifer	T = Tamarack	Y = Sand
G = Grass	MD = Mixed Deciduous	Z = Water	
H = Hemlock	N = Marsh		

Density

0 = Non Stocked	5 = Pole Timber Medium
1 = Seedling Sapling Poor	6 = Pole Timber Well
2 = Seedling Sapling Medium	7 = Saw Timber Poor
3 = Seedling Sapling Well	8 = Saw Timber Medium
4 = Pole Timber Poor	9 = Saw Timber Well

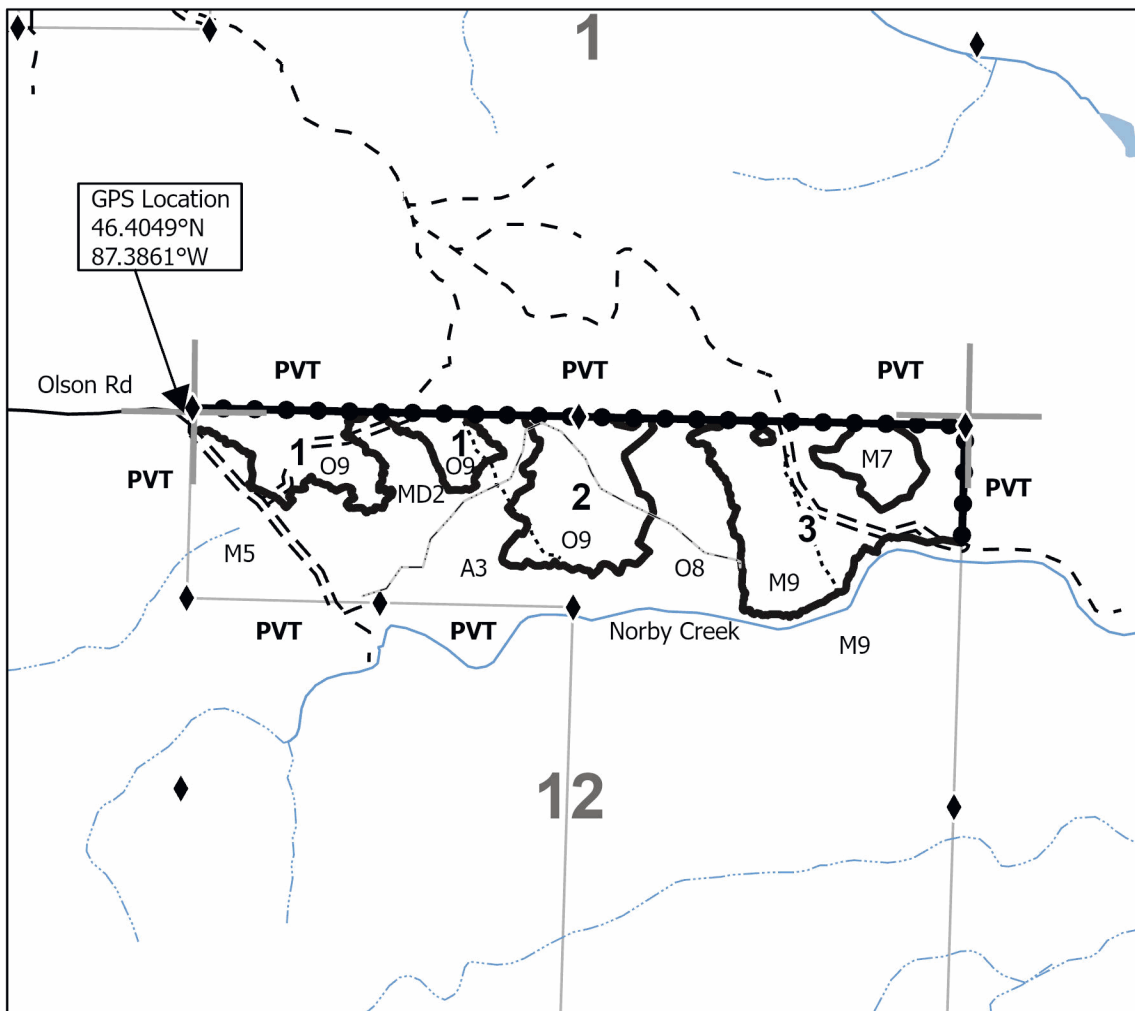
Locator Map 1:200,000



Payment Unit Number	Acres
1	17.7
2	19.3
3	33

**Ridge Runner Hardwood
Compartment 275
70.0 Acres**

0 0.25 0.5 1 Miles



Legend

- Against State (Red)
- Private Line (Blue)
- State Boundary
- Forest Access Route
- Administrative Access Only
- Paved Road
- Government Gravel/Dirt
- Private Gravel/Dirt
- Proposed Pre-Haul Road
- Intermittent Stream
- Perennial River
- Survey Grade Corner
- Section Corner



TIMBER SALE INFORMATION

Little Badger Den Mix (32-017-25)

T43N, R25W, SEC. 21; T43N, R25W, SEC. 22; T43N, R25W, SEC. 28; T43N, R25W, SEC. 29; T43N, R25W, SEC. 33; T43N, R25W, SEC. 34.

SALE NOTE: A snowmobile/ORV trail runs through the sale area.

This sale contains operating restrictions between 12/01 and 04/01 due to wet ground and deer winter ranges. There are also Units that are restricted between 04/15 and 07/15 due to bark slippage. The south line of the sale boundary on Payment Units 10 and 11 are not marked with red paint. See spec 1.2.1.

A recreation site such as a trail, pathway, or campground is within the sale area or the vicinity. Certain restrictions/specifications may be applicable including time restrictions.

A timber sale contract for this lump sum, sealed bid timber sale will be awarded to the responsible bidder offering the highest sealed bid price. All units of volume listed below were estimated using the Inventory Manager computer program and the new Michigan taper model. Bids must be at or above the following advertised price for each product and species:

<u>PRODUCTS & SPECIES</u>	<u>ESTIMATED UNITS*</u>	<u>ADVERTISED PRICE</u>
Sawtimber		
Basswood	87.6 MBF	\$ 46.00 / MBF
Sugar Maple	42.3 MBF	\$ 199.00 / MBF
Pulpwood		
Balsam Fir	175 Cords	\$ 9.35 / Cord
Balsam Poplar	118 Cords	\$ 22.75 / Cord
Basswood	288 Cords	\$ 14.40 / Cord
Mixed Aspen	3,577 Cords	\$ 22.75 / Cord
Mixed Hardwood	86 Cords	\$ 11.10 / Cord
Mixed Spruce	92 Cords	\$ 10.30 / Cord
Sugar Maple	742 Cords	\$ 11.10 / Cord

* The total volume is statistically estimated within plus (+) or minus (-) 9.96 percent. There are an estimated 5,382 cords on this timber sale, plus or minus 536 cords at the 95% confidence level. The estimated units are final and not subject to adjustment. Prospective bidders are urged to examine this timber and to make their own estimates of quantity and quality.

BOND AND PAYMENT SCHEDULE:

1. A bond in the amount of \$11,243.00 to insure faithful performance of the conditions of the contract will be deposited by the successful bidder within 21 days of the sale award.
2. Cutting in any sale or unit without the required advance payment would be considered a trespass.
3. Total payment must be paid in advance or according to the following schedule :
 - (a) Ten percent (10%) of the sale value must be paid within 21 days of the sale award.
 - (b) The 10% down payment will be credited towards the first unit cut.
 - (c) Payment for each of the following units must be made before cutting begins in that unit:

<u>PAYMENT UNIT NUMBER</u>	<u>PERCENT OF TOTAL SALE VALUE</u>
01	1.7%
02	4.3%
03	4.0%
04	6.4%
05	0.8%
06	7.0%
07	8.8%
08	7.0%
09	6.6%
10	4.6%
11	6.6%
12	12.7%
13	11.4%
14	11.2%
15	6.9%

4. If no cutting takes place, the 10% down payment will not be refunded.
5. Operations on the contract issued will terminate on 06/30/2030.

SALE STATISTICS

Volumes were calculated in cubic feet using the Michigan taper model. Cubic foot volume includes all wood inside bark for the product indicated. For display purposes, cubic feet were converted to cords and MBF using a simple conversion factor, e.g. 79 cubic feet per cord and 185 cubic feet per MBF. The cubic foot volumes are precise; the cords and MBF volumes are not. Cubic foot volume cannot be directly converted to cords or boards with precision.

SALE VOLUMES

The total estimated sale volume may not equal the sum of the species/products due to the nature of statistical calculations associated with double sampling methodology.

VOLUME			STATISTICAL RANGE IN CORDS	
TOTAL CUBIC FEET	TOTAL CORDS	PERCENT ERROR	MINIMUM	MAXIMUM
425,147	5,382	9.96%	4,845	5,918

VDU VOLUMES

A VDU is a Volume Determination Unit. Volumes and their associated statistics are calculated at the VDU level and summarized to the sale level. There is often a one to one relationship between a VDU and a Payment Unit, but not always, depending on the cruise design. Refer to the VDU TO PAYMENT UNIT table.

	VOLUME			RANGE IN CORDS	
VDU	TOTAL CUBIC FEET	TOTAL CORDS	PERCENT ERROR	MINIMUM	MAXIMUM
29	61,442	778	23.88%	592	964
35	172,214	2,180	19.34%	1,758	2,602
54	8,909	113	51.95%	54	171
65	110,606	1,400	15.86%	1,178	1,622
68	71,977	911	18.25%	745	1,077
TOTAL:	425,147	5,382		4,327	6,436

VDU TO PAYMENT UNIT

When a VDU is associated with more than one Payment Unit (PU), the VDU volumes are assigned to the PU based on acres of the VDU within the PU.

VDU	VDU ACRES	PU	PU ACRES
TOTAL:			

DESCRIPTION OF TIMBER BY PAYMENT UNIT (PU)

PU	MARKET GROUP	PRODUCT	QUANTITY	UNIT	ACRES	ADVERTISE PRICE
1	Balsam Fir Mixed Aspen <i>Quaking Aspen</i> Mixed Hardwood <i>Red Maple</i> Mixed Spruce <i>White Spruce</i>	Pulpwood	13 63 63 30 30 6 6	Cords Cords Cords Cords Cords Cords Cords	3.9	\$1,949.60
2	Balsam Fir Balsam Poplar Mixed Aspen <i>Quaking Aspen</i> Mixed Spruce <i>Black Spruce</i> <i>White Spruce</i>	Pulpwood	10 7 197 197 15 14 1	Cords Cords Cords Cords Cords Cords Cords	12.6	\$4,889.00
3	Balsam Fir Balsam Poplar Mixed Aspen <i>Quaking Aspen</i> Mixed Spruce <i>Black Spruce</i> <i>White Spruce</i>	Pulpwood	9 7 181 181 14 13 1	Cords Cords Cords Cords Cords Cords Cords	11.6	\$4,505.35
4	Balsam Fir Balsam Poplar Mixed Aspen <i>Quaking Aspen</i> Mixed Spruce <i>Black Spruce</i> <i>White Spruce</i>	Pulpwood	15 11 289 289 23 22 1	Cords Cords Cords Cords Cords Cords Cords	18.5	\$7,202.15
5	Basswood Sugar Maple Balsam Fir Basswood Mixed Aspen <i>B. T. Aspen</i> <i>Quaking Aspen</i> Sugar Maple	Sawtimber Pulpwood	3.1 1.4 1 9 4 2 2 24	MBF MBF Cords Cords Cords Cords Cords Cords	3.8	\$917.55
6	Basswood Sugar Maple Balsam Fir Basswood Mixed Aspen <i>B. T. Aspen</i> <i>Quaking Aspen</i> Mixed Hardwood <i>Ironwood</i> Mixed Spruce <i>White Spruce</i> Sugar Maple	Sawtimber Pulpwood	26.1 12.0 6 80 35 17 18 4 4 1 1 202	MBF MBF Cords Cords Cords Cords Cords Cords Cords Cords Cords Cords	32.0	\$7,889.85
7	Basswood Sugar Maple Balsam Fir Basswood Mixed Aspen <i>B. T. Aspen</i> <i>Quaking Aspen</i>	Sawtimber Pulpwood	32.5 15.1 7 101 44 21 23	MBF MBF Cords Cords Cords Cords Cords	39.9	\$9,883.75

DESCRIPTION OF TIMBER BY PAYMENT UNIT (PU), CON'T

PU	MARKET GROUP	PRODUCT	QUANTITY	UNIT	ACRES	ADVERTISE PRICE
7 con't	Mixed Hardwood	Pulpwood	6	Cords		
	<i>Ironwood</i>		6	<i>Cords</i>		
	Mixed Spruce		1	Cords		
	<i>White Spruce</i>		1	<i>Cords</i>		
	Sugar Maple		251	Cords		
8	Basswood	Sawtimber	25.9	MBF	31.7	\$7,824.15
	Sugar Maple	Pulpwood	11.9	MBF		
	Balsam Fir		6	Cords		
	Basswood		79	Cords		
	Mixed Aspen		35	Cords		
	<i>B. T. Aspen</i>		17	<i>Cords</i>		
	<i>Quaking Aspen</i>		18	<i>Cords</i>		
	Mixed Hardwood		4	Cords		
	<i>Ironwood</i>		4	<i>Cords</i>		
	Mixed Spruce		1	Cords		
	<i>White Spruce</i>		1	<i>Cords</i>		
	Sugar Maple		200	Cords		
9	Sugar Maple	Sawtimber	0.7	MBF	11.5	\$7,428.60
	Balsam Fir	Pulpwood	9	Cords		
	Balsam Poplar		7	Cords		
	Mixed Aspen		298	Cords		
	<i>B. T. Aspen</i>		8	<i>Cords</i>		
	<i>Quaking Aspen</i>		290	<i>Cords</i>		
	Sugar Maple		24	Cords		
10	Sugar Maple	Sawtimber	0.5	MBF	7.9	\$5,144.55
	Balsam Fir	Pulpwood	6	Cords		
	Balsam Poplar		5	Cords		
	Mixed Aspen		206	Cords		
	<i>B. T. Aspen</i>		6	<i>Cords</i>		
	<i>Quaking Aspen</i>		200	<i>Cords</i>		
	Sugar Maple		17	Cords		
11	Sugar Maple	Sawtimber	0.7	MBF	11.4	\$7,383.10
	Balsam Fir	Pulpwood	9	Cords		
	Balsam Poplar		7	Cords		
	Mixed Aspen		296	Cords		
	<i>B. T. Aspen</i>		8	<i>Cords</i>		
	<i>Quaking Aspen</i>		288	<i>Cords</i>		
	Sugar Maple		24	Cords		
12	Balsam Fir	Pulpwood	24	Cords	20.2	\$14,253.60
	Balsam Poplar		22	Cords		
	Basswood		6	Cords		
	Mixed Aspen		580	Cords		
	<i>Quaking Aspen</i>		580	<i>Cords</i>		
	Mixed Hardwood		13	Cords		
	<i>Black Cherry</i>		10	<i>Cords</i>		
	<i>Ironwood</i>		1	<i>Cords</i>		
	<i>Red Maple</i>		2	<i>Cords</i>		
	Mixed Spruce		10	Cords		
	<i>White Spruce</i>		10	<i>Cords</i>		
13	Balsam Fir	Pulpwood	23	Cords	18.2	\$12,799.30
	Balsam Poplar		20	Cords		
	Basswood		5	Cords		
	Mixed Aspen		521	Cords		
	<i>Quaking Aspen</i>		521	<i>Cords</i>		
	Mixed Hardwood		11	Cords		

DESCRIPTION OF TIMBER BY PAYMENT UNIT (PU), CON'T

PU	MARKET GROUP	PRODUCT	QUANTITY	UNIT	ACRES	ADVERTISE PRICE
13 con't	<i>Black Cherry</i>	<i>Pulpwood</i>	9	<i>Cords</i>		
	<i>Ironwood</i>		1	<i>Cords</i>		
	<i>Red Maple</i>		1	<i>Cords</i>		
	Mixed Spruce		8	Cords		
	<i>White Spruce</i>		8	<i>Cords</i>		
14	Balsam Fir	Pulpwood	23	Cords	17.9	\$12,617.30
	Balsam Poplar		20	Cords		
	Basswood		5	Cords		
	Mixed Aspen		513	Cords		
	<i>Quaking Aspen</i>		513	<i>Cords</i>		
	Mixed Hardwood		11	Cords		
	<i>Black Cherry</i>		9	<i>Cords</i>		
	<i>Ironwood</i>		1	<i>Cords</i>		
	<i>Red Maple</i>		1	<i>Cords</i>		
	Mixed Spruce		8	Cords		
	<i>White Spruce</i>		8	<i>Cords</i>		
15	Balsam Fir	Pulpwood	14	Cords	11.0	\$7,742.55
	Balsam Poplar		12	Cords		
	Basswood		3	Cords		
	Mixed Aspen		315	Cords		
	<i>Quaking Aspen</i>		315	<i>Cords</i>		
	Mixed Hardwood		7	Cords		
	<i>Black Cherry</i>		6	<i>Cords</i>		
	<i>Red Maple</i>		1	<i>Cords</i>		
	Mixed Spruce		5	Cords		
	<i>White Spruce</i>		5	<i>Cords</i>		
TOTAL:			129.9	MBF		
TOTAL:			5,078	Cords		

Sale Specific Conditions & Requirements

Sale Name: Little Badger Den Mix

Sale Number: 32-017-25 Seq#: 1

1 - Sale Area

1.2 - Boundaries

1.2.1 - Painted Boundaries (9/19)

The sale boundary and Payment Unit boundaries are marked and identified by red and yellow paint or are unmarked and identified by a cover type change. Exterior sale boundary lines against state are marked with red paint, with the exception of the southern boundary of Payment Units 10 and 11, which is unpainted and designated by the cover type change (A9 against A3). Interior Payment Unit boundaries are marked with yellow paint. Retention patches are marked with red paint; no harvesting activities may occur within these areas. The painted boundary line trees are not Included Timber and are to be protected unless marked with orange paint. Yellow painted trees designating an interior Payment Unit boundary are only to be cut when all surrounding Payment Units have been paid.

2 - Timber Specifications

2.1 - Included Timber

2.1.1 - Clearcut Unit(s) with Unmerchantable Trees (6/14)

Within Payment Unit(s) 9-11, cut all trees that are two (2) inches or more at DBH, except do not cut basswood, black cherry, cedar, hemlock, pine, or white spruce.

Within Payment Units 12-15, cut all trees that are two (2) inches or more at DBH, except do not cut cedar, hemlock, or pine.

2.1.2 - Clearcut Unit(s) w/o Unmerchantable Trees (8/11)

Within Payment Unit(s) 1, cut all trees which meet minimum piece specifications in 2.2 Utilization, except do not cut hemlock, cedar, black cherry, or black ash.

Within Payment Units 2-4, cut all aspen, spruce, and fir which meet minimum piece specifications in 2.2 Utilization.

2.1.3 - Cut Tree Marked Unit(s) (12/08)

Within Payment Unit(s) 5-8, all trees are designated for cutting when marked with orange paint above and below stump height, regardless of merchantability. In addition, cut all spruce and fir which meet minimum piece specifications in 2.2 Utilization.

3 - Payments

3.4 - Damaged Timber

3.4.1 - Damaged Timber (12/24)

General Condition and Requirement 3.4 Damaged Timber, defines liquidated damages for undesigned live merchantable trees which are cut or injured.

In addition, within Payment Units 2-4, extreme care should be taken to avoid damage to tree seedlings and saplings. Within the Sale Area, if more than 25% of the tree seedlings or saplings (1/4" to 4.5" DBH) within a specified portion of the Sale Area are damaged due to carelessness, liquidated damages will be assessed at \$100 per acre for all acreage within that specified portion of the Sale Area that was damaged.

No damage is acceptable to undesigned live merchantable trees. Within the Sale Area, if more than 5% of trees (> 4.5" DBH) within a specified area of the sale are damaged, liquidated damages will be assessed for all trees damaged. Rates will be in accordance with General Condition and Requirement 3.4 Damaged Timber.

4 - Transportation

4.1 - Construction

4.1.3 - Slash and Earthen Piles (8/04)

Piles or windrows of earth along roads and landings that have been widened or constructed shall be leveled. Slash from road maintenance or construction, including stumps, shall be dispersed throughout the sale.

4.1.4 - Timber Removed for Construction (3/23)

Trees cut or damaged in the process of pre-approved road, landing, or skid trail construction will be decked in an area separate from other Designated Timber and not removed until measured by the Sale Administrator. Payment will be made at contract prices or average prices, if not on the contract.

4.1.6 - Road Construction (4/24)

Construction of new roads or improvements of existing roads shall be done in such a way as to minimize the environmental and visual impacts. Merchantable trees shall be cut and utilized unless otherwise directed. Non-merchantable trees shall be severed and laid flat on the ground. Slash shall be scattered, and not left in windrows and kept a minimum of 10 feet back from the road edge. Stumps shall be set upright, not left on edge, and be moved at least 10 feet away from the road edge. Disturbed soil shall be feathered into the woods and not left in berms or windrows. All new roads must be approved by the Sale Administrator.

4.1.7 - Road Closure (10/11)

All new roads built into the sale must be blocked to vehicle traffic upon completion of the sale. Overgrown roads that are reopened shall be considered new roads. In general, this will require constructing a four (4') foot high berm of stumps and logs covered with earth. Temporary berms may be required if no sale activity occurs for 30 or more consecutive days. Contact the Sale Administrator for specific details of design and placement.

4.1.8 - Road Work (1) (8/07)

The following road work is required: 150 cubic yards of gravel will be spread in holes along Watson Cut-off Road. Contact the Sale Administrator for details.

4.2 - Maintenance

4.2.2 - Fill Material (4/07)

To maintain roads, fill material may be needed in areas where "holes" exist or may be expected to develop. This fill material should be placed before trucking begins. Contact the Sale Administrator regarding the availability of onsite sand or gravel from adjacent State-owned lands.

4.2.3 - Road maintenance (8/13)

The following road maintenance may be needed: Within 60 days of completion of hauling, or if no hauling occurs for 60 days, the road must be maintained and graded. This includes cleaning of drainage areas, grading, crowning and filling with gravel, if necessary. Damages will be assessed if grading/repair does not occur.

5 - Operations

5.1 - Notification

5.1.1 - Pre-sale Conference (10/16)

A pre-sale conference between the Purchaser and Sale Administrator is required prior to beginning any operations. The Unit Manager or his/her representative must be contacted at least 5 days in advance to schedule the conference.

5.2 - Conduct of Operations

5.2.3 - Operating Restrictions

5.2.3.1 - Operating Restrictions (9/11)

Within Payment Unit(s) 1 and 12-15, unless changed by written agreement, cutting, skidding, and hauling are limited to frozen conditions (generally the period of December 1 to April 1). This restriction is due to wet soils, within Payment Unit 1, and deer winter ranges, within Payment Units 12-15.

5.2.3.3 - Bark Slippage Restriction (3/09)

Within Payment Unit(s) 2-8, unless changed by written agreement, cutting and skidding are not permitted during the period of April 15 to July 15. This restriction is because of bark slippage.

5.2.22 - Operating Caution

5.2.22.1 - Operating Caution (6/11)

It is recommended, but not required, that within Payment Unit(s) 2, cutting, skidding, and hauling occur during dry summer or frozen winter conditions. The reason for the recommendation is because of wet soils.

5.2.32 - Decking/Landing Restoration (9/13)

All decking and landing areas must have the surface area restored to a condition equal to or better than before. This is to ensure the proper regeneration of the stand. Wood debris, chips and "cookies" from trimmings must be removed or scattered away from landing and loading areas and may not be windrowed on the edge.

5.2.37 - No Decking Areas (12/08)

No decking is allowed within 50 feet of Trail G or Trail 33 without permission of the Unit Manager or his/her representative.

5.2.38 - No Decking Against Live Trees (2/04)

Cut products may not be decked against unmarked or designated leave trees.

5.2.39 - ORV Trail/Route Protection (4/18)

Trail G is an ORV trail or route and is shown on the Timber Sale Map. Do not cut trees or damage posts with yellow ORV markers. All stumps within 20 feet of the trail must be cut flush with the ground. Maintain a 20-foot-wide slash, debris, and rut free zone daily using the ORV trail or route as the centerline. Skidding across the trail or route may only occur in locations approved by the Sale Administrator. If the ORV trail is used, it must be maintained and restored to a condition equal to, or better than, before the sale.

5.2.41 - Snowmobile Trail Protection (9/11)

Trail 33 is a snowmobile trail and is shown on the Timber Sale Map. Do not cut or damage posts with orange trail markers or traffic control signs. If the trail is used, it must be maintained and restored to a condition equal to or better than before the sale. If the trail road is to be used for hauling during the snowmobile season, then a snow-covered base must be left on the trail, and any trucking of forest products shall only occur from Monday to Thursday during daylight hours. Maintain a 20-foot-wide slash, debris, and rut free zone daily using the snowmobile trail as the centerline. No decking of forest products will be permitted along the snowmobile trail. All stumps within 20 feet of the snowmobile trail must be cut at ground level.

5.4 - Soil Protection

5.4.1 - Rutting Restriction, General (7/16)

Operations are to cease immediately if equipment and weather conditions result in rutting of roads and/or skid trails which is 12 inches or greater in depth and 50 feet in length. The Unit Manager or his/her representative may restrict hauling and/or skidding if ruts exceed the specified depth. With the Unit Manager or his/her representative's approval, the Purchaser may return to the area when the risk of rutting has decreased.

5.7 - Protection of Historical Sites

5.7.1 - Historical Sites (7/12)

The Purchaser shall not cut live or dead trees or operate equipment within historical sites. Historical sites are excluded from the Sale Area with a red boundary line. The Purchaser shall protect historical sites from damage by the Purchaser's operations. If Purchaser's operations have cut or damaged historical sites through carelessness, the Purchaser shall pay \$1500 as fixed, agreed and liquidated damages for each acre or part thereof cut or damaged.

6 - Safety and Fire Prevention

6.2 - Signing

6.2.1 - Road Posting (10/20)

The Purchaser is responsible for posting and maintaining caution signs on Little West Road and CR 557 prior to beginning operations. The road must be posted at appropriate distances from the Sale Area to warn of logging activity and truck traffic. Signs must be removed when harvest operations are suspended or completed. The Purchaser will provide these signs.

6.2.2 - Snowmobile Trail Posting (10/20)

The Purchaser is responsible for posting and maintaining caution signs on Trail 33 prior to beginning operations during the snowmobile season (approximately December 1 to March 31). The trail must be posted at appropriate distances from the Sale Area to warn of logging activity and truck traffic. Signs must be removed when harvest operations are suspended or completed. The Purchaser will provide these signs.

6.2.3 - Recreational Trail Posting (10/20)

The Purchaser is responsible for posting and maintaining caution signs on Trail G prior to beginning operations. The trail must be posted at appropriate distances from the Sale Area to warn of logging activity and truck traffic at both ends of the trail. Signs must be removed when harvest operations are suspended or completed. The Purchaser will provide these signs.

**TIMBER SALE MAP**

This information provided by authority of Part 525, 1994 PA 451, as amended.

Sale Number

32-017-25

Date

07/30/2025

Forest Management Unit

Gwinn Mgt Unit

County

Marquette

Mapped By: Rosten

Cruised By: Gwinn Staff

Scale

1:18,000

Page

1

Of

2Township
43NRange
25WSection(s) and
Subdivision(s) N1/2NW,SENW,NE,NESE; Sec. 34 W1/2NW,NWSW;
Sec. 21 NESE; Sec. 22 NWSW; Sec. 28 S1/2NW,SW,W1/2SE; Sec. 29 SENE,E1/2SE; Sec. 33**Cover Type**

A = Aspen	J = Jack Pine	O = Oak	U = Upland Brush
B = Paper Birch	K = Rock	P = Lowland Poplar	UM = Upland Mix Forest
C = Cedar	L = Lowland Brush	Q = Mixed Swamp Conifer	V = Bog or Marsh
D = Treed Bog	LM = Lowland Mix Forest	R = Red Pine	W = White Pine
E = Swamp Hardwoods	M = Maple, Beech, Birch	S = Black Spruce	X = Non Stocked
F = Spruce/Fir	MC = Mixed Conifer	T = Tamarack	Y = Sand
G = Grass	MD = Mixed Deciduous	Z = Water	
H = Hemlock	N = Marsh		

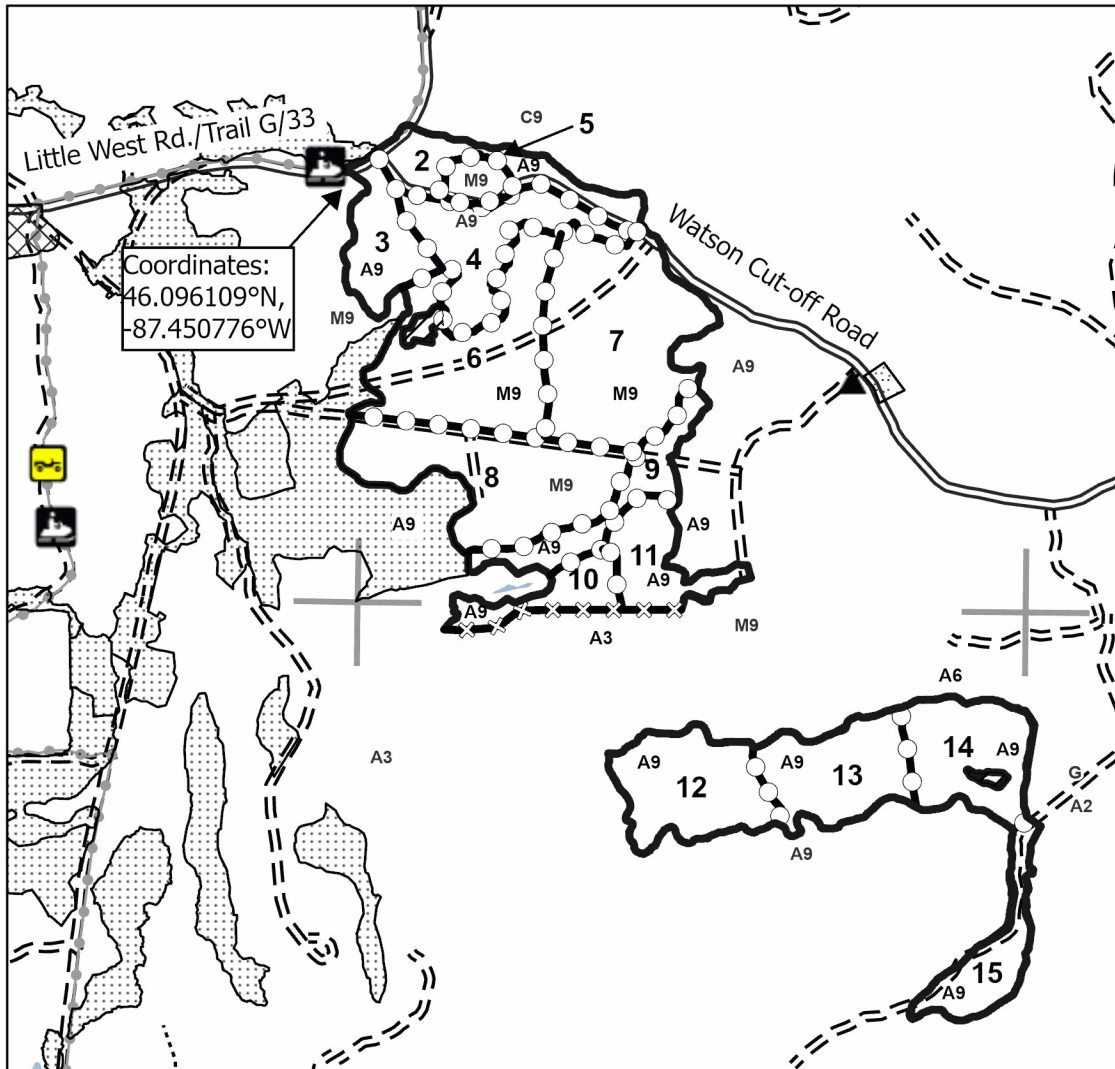
Density

0 = Non Stocked	5 = Pole Timber Medium
1 = Seedling Sapling Poor	6 = Pole Timber Well
2 = Seedling Sapling Medium	7 = Saw Timber Poor
3 = Seedling Sapling Well	8 = Saw Timber Medium
4 = Pole Timber Poor	9 = Saw Timber Well

Locator Map 1:100,000**Little Badger
Den Mix
252.1 Acres**

Payment Unit Number	Acres	Payment Unit Number	Acres	Payment Unit Number	Acres
1	3.9	6	32	11	11.4
2	12.6	7	39.9	12	20.2
3	11.6	8	31.7	13	18.2
4	18.5	9	11.5	14	17.9
5	3.8	10	7.9	15	11

0 0.25 0.5 1 Miles

**Legend**

- Against State (Red)
- Against State (Cover Type Change)
- Payment Unit (Yellow)
- Recreational Trails
- ORV Route
- Snowmobile
- MIRIS Section Corner
- Nearby Timber Sale
- Primary Forest Road
- Forest Access Route
- Administrative Access Only
- Berm
- Special Protection Area
- Retention
- Gravel Pit

Use QR Code to
open Map in App

**TIMBER SALE MAP**

This information provided by authority of Part 525, 1994 PA 451, as amended.

Sale Number

32-017-25

Date

07/30/2025

Forest Management Unit

Gwinn Mgt Unit

County

Marquette

Mapped By: Rosten

Cruised By: Gwinn Staff

Scale

1:7,000

Page

2

Of

2Township
43NRange
25WSection(s) and Subdivision(s) N1/2NW,SENW,NE,NESE; Sec. 34 W1/2NW,NWSW;
Sec. 21 NESE; Sec. 22 NWSW; Sec. 28 S1/2NW,SW,W1/2SE; Sec. 29 SENE,E1/2SE; Sec. 33**Cover Type**

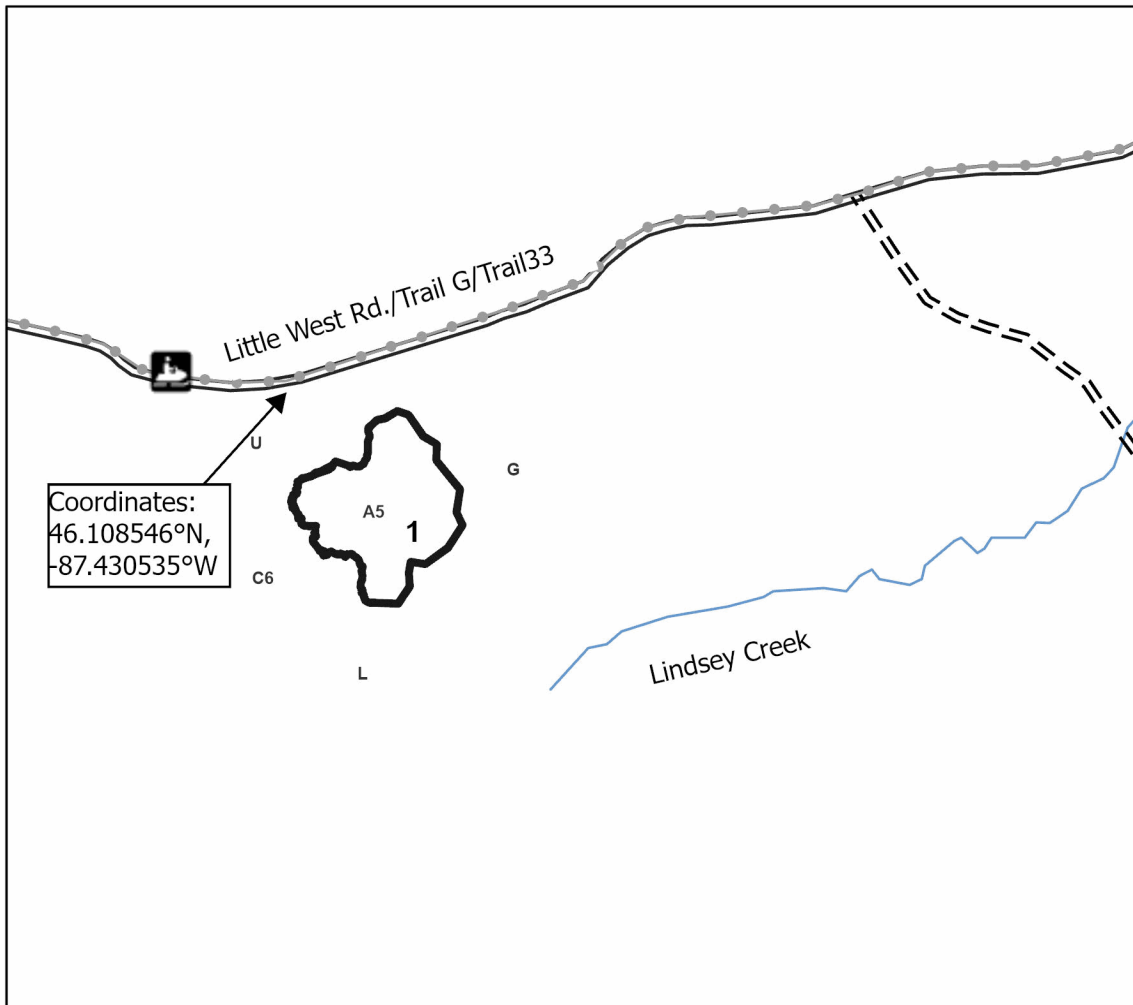
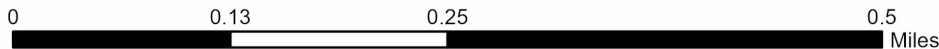
A = Aspen	J = Jack Pine	O = Oak	U = Upland Brush
B = Paper Birch	K = Rock	P = Lowland Poplar	UM = Upland Mix Forest
C = Cedar	L = Lowland Brush	Q = Mixed Swamp Conifer	V = Bog or Marsh
D = Treed Bog	LM = Lowland Mix Forest	R = Red Pine	W = White Pine
E = Swamp Hardwoods	M = Maple, Beech, Birch	S = Black Spruce	X = Non Stocked
F = Spruce/Fir	MC = Mixed Conifer	T = Tamarack	Y = Sand
G = Grass	MD = Mixed Deciduous		Z = Water
H = Hemlock	N = Marsh		

Density

0 = Non Stocked	5 = Pole Timber Medium
1 = Seedling Sapling Poor	6 = Pole Timber Well
2 = Seedling Sapling Medium	7 = Saw Timber Poor
3 = Seedling Sapling Well	8 = Saw Timber Medium
4 = Pole Timber Poor	9 = Saw Timber Well

Locator Map 1:100,000

Payment Unit Number	Acres	Payment Unit Number	Acres	Payment Unit Number	Acres
1	3.9	6	32	11	11.4
2	12.6	7	39.9	12	20.2
3	11.6	8	31.7	13	18.2
4	18.5	9	11.5	14	17.9
5	3.8	10	7.9	15	11

Little Badger Den Mix**252.1 Acres****Legend**

- Against State (Red)
- Recreational Trails
- Perennial River
- Snowmobile
- Nearby Timber Sale
- == Primary Forest Road
- == Forest Access Route

Use QR Code to
open Map in App

TIMBER SALE INFORMATION

North Smoke Mix (32-018-25)

T43N, R25W, SEC. 28; T43N, R25W, SEC. 29; T43N, R25W, SEC. 32; T43N, R25W, SEC. 33.
Marquette County (Advertised Price \$66,041.65)

SALE NOTE: A snowmobile and ORV trail run through the sale area.

Three Special Protection Areas exist in the Sale Area. These are identified on the timber sale map.

This sale contains operating restrictions between 12/01 and 04/01 due to wet ground and deer winter ranges. There is also a Unit that is restricted between 04/15 and 07/15 due to bark slippage.

A recreation site such as a trail, pathway, or campground is within the sale area or the vicinity. Certain restrictions/specifications may be applicable including time restrictions.

A timber sale contract for this lump sum, sealed bid timber sale will be awarded to the responsible bidder offering the highest sealed bid price. All units of volume listed below were estimated using the Inventory Manager computer program and the new Michigan taper model. Bids must be at or above the following advertised price for each product and species:

<u>PRODUCTS & SPECIES</u>	<u>ESTIMATED UNITS*</u>	<u>ADVERTISED PRICE</u>
Sawtimber		
Basswood	1.5 MBF	\$ 46.00 / MBF
Black Cherry	1.2 MBF	\$ 33.00 / MBF
Paper Birch	2.0 MBF	\$ 83.00 / MBF
Red Maple	0.8 MBF	\$ 84.00 / MBF
Sugar Maple	7.6 MBF	\$ 199.00 / MBF
Pulpwood		
Balsam Fir	284 Cords	\$ 9.35 / Cord
Balsam Poplar	67 Cords	\$ 22.75 / Cord
Basswood	55 Cords	\$ 14.40 / Cord
Mixed Aspen	2,331 Cords	\$ 22.75 / Cord
Mixed Hardwood	162 Cords	\$ 11.10 / Cord
Mixed Spruce	125 Cords	\$ 10.30 / Cord
Sugar Maple	171 Cords	\$ 11.10 / Cord
Tamarack	95 Cords	\$ 12.65 / Cord

* The total volume is statistically estimated within plus (+) or minus (-) 13.66 percent. There are an estimated 3,324 cords on this timber sale, plus or minus 454 cords at the 95% confidence level. The estimated units are final and not subject to adjustment. Prospective bidders are urged to examine this timber and to make their own estimates of quantity and quality.

BOND AND PAYMENT SCHEDULE:

1. A bond in the amount of \$6,604.00 to insure faithful performance of the conditions of the contract will be deposited by the successful bidder within 21 days of the sale award.
2. Cutting in any sale or unit without the required advance payment would be considered a trespass.
3. Total payment must be paid in advance or according to the following schedule:
 - (a) Ten percent (10%) of the sale value must be paid within 21 days of the sale award.
 - (b) The 10% down payment will be credited towards the first unit cut.
 - (c) Payment for each of the following units must be made before cutting begins in that unit:

<u>PAYMENT UNIT NUMBER</u>	<u>PERCENT OF TOTAL SALE VALUE</u>
01	22.0%
02	10.9%
03	2.7%
04	30.5%
05	15.2%
06	1.3%
07	3.3%
08	14.1%

4. If no cutting takes place, the 10% down payment will not be refunded.
5. Operations on the contract issued will terminate on 06/30/2030.

SALE STATISTICS

Volumes were calculated in cubic feet using the Michigan taper model. Cubic foot volume includes all wood inside bark for the product indicated. For display purposes, cubic feet were converted to cords and MBF using a simple conversion factor, e.g. 79 cubic feet per cord and 185 cubic feet per MBF. The cubic foot volumes are precise; the cords and MBF volumes are not. Cubic foot volume cannot be directly converted to cords or boards with precision.

SALE VOLUMES

The total estimated sale volume may not equal the sum of the species/products due to the nature of statistical calculations associated with double sampling methodology.

VOLUME			STATISTICAL RANGE IN CORDS	
TOTAL CUBIC FEET	TOTAL CORDS	PERCENT ERROR	MINIMUM	MAXIMUM
262,597	3,324	13.66%	2,870	3,778

VDU VOLUMES

A VDU is a Volume Determination Unit. Volumes and their associated statistics are calculated at the VDU level and summarized to the sale level. There is often a one to one relationship between a VDU and a Payment Unit, but not always, depending on the cruise design. Refer to the VDU TO PAYMENT UNIT table.

	VOLUME			RANGE IN CORDS	
VDU	TOTAL CUBIC FEET	TOTAL CORDS	PERCENT ERROR	MINIMUM	MAXIMUM
19	14,492	183	32.75%	123	244
20	35,965	455	34.10%	300	610
38	7,303	92	36.95%	58	127
52	36,896	467	32.01%	318	617
68	167,941	2,126	18.73%	1,728	2,524
TOTAL:	262,597	3,324		2,527	4,121

VDU TO PAYMENT UNIT

When a VDU is associated with more than one Payment Unit (PU), the VDU volumes are assigned to the PU based on acres of the VDU within the PU.

VDU	VDU ACRES	PU	PU ACRES
TOTAL:			

DESCRIPTION OF TIMBER BY PAYMENT UNIT (PU)

PU	MARKET GROUP	PRODUCT	QUANTITY	UNIT	ACRES	ADVERTISE PRICE
1	Sugar Maple	Sawtimber	2.2	MBF	20.6	\$14,539.15
	Balsam Fir	Pulpwood	63	Cords		
	Balsam Poplar		5	Cords		
	Basswood		8	Cords		
	Mixed Aspen		559	Cords		
	<i>B. T. Aspen</i>		34	<i>Cords</i>		
	<i>Quaking Aspen</i>		525	<i>Cords</i>		
	Mixed Hardwood		8	Cords		
	<i>Ironwood</i>		1	<i>Cords</i>		
	<i>Paper Birch</i>		5	<i>Cords</i>		
	<i>Red Maple</i>		2	<i>Cords</i>		
	Sugar Maple		43	Cords		
2	Paper Birch	Sawtimber	0.9	MBF	18.2	\$7,177.20
	Sugar Maple		0.8	MBF		
	Balsam Fir	Pulpwood	21	Cords		
	Balsam Poplar		51	Cords		
	Basswood		5	Cords		
	Mixed Aspen		103	Cords		
	<i>Quaking Aspen</i>		103	<i>Cords</i>		
	Mixed Hardwood		84	Cords		
	<i>Black Cherry</i>		12	<i>Cords</i>		
	<i>Paper Birch</i>		46	<i>Cords</i>		
	<i>Red Maple</i>		26	<i>Cords</i>		
	Mixed Spruce		77	Cords		
	<i>Black Spruce</i>		76	<i>Cords</i>		
	<i>White Spruce</i>		1	<i>Cords</i>		
	Sugar Maple		22	Cords		
	Tamarack		95	Cords		
3	Basswood	Sawtimber	1.5	MBF	6.0	\$1,793.35
	Balsam Fir	Pulpwood	1	Cords		
	Basswood		26	Cords		
	Mixed Aspen		56	Cords		
	<i>Quaking Aspen</i>		56	<i>Cords</i>		
	Sugar Maple		6	Cords		
4	Sugar Maple	Sawtimber	3.1	MBF	28.5	\$20,133.50
	Balsam Fir	Pulpwood	87	Cords		
	Balsam Poplar		7	Cords		
	Basswood		11	Cords		
	Mixed Aspen		774	Cords		
	<i>B. T. Aspen</i>		47	<i>Cords</i>		
	<i>Quaking Aspen</i>		727	<i>Cords</i>		
	Mixed Hardwood		11	Cords		
	<i>Ironwood</i>		2	<i>Cords</i>		
	<i>Paper Birch</i>		6	<i>Cords</i>		
	<i>Red Maple</i>		3	<i>Cords</i>		
	Sugar Maple		59	Cords		
5	Sugar Maple	Sawtimber	1.5	MBF	14.2	\$10,044.65
	Balsam Fir	Pulpwood	43	Cords		
	Balsam Poplar		4	Cords		
	Basswood		5	Cords		
	Mixed Aspen		386	Cords		
	<i>B. T. Aspen</i>		24	<i>Cords</i>		
	<i>Quaking Aspen</i>		362	<i>Cords</i>		
	Mixed Hardwood		6	Cords		
	<i>Ironwood</i>		1	<i>Cords</i>		
	<i>Paper Birch</i>		3	<i>Cords</i>		

DESCRIPTION OF TIMBER BY PAYMENT UNIT (PU), CON'T

PU	MARKET GROUP	PRODUCT	QUANTITY	UNIT	ACRES	ADVERTISE PRICE
5 con't	<i>Red Maple</i> Sugar Maple	<i>Pulpwood</i>	2 30	<i>Cords</i> Cords		
6	Red Maple Balsam Fir Mixed Aspen <i>B. T. Aspen</i> <i>Quaking Aspen</i> Mixed Hardwood <i>Black Cherry</i> <i>Paper Birch</i> <i>Red Maple</i> Mixed Spruce <i>Black Spruce</i> <i>White Spruce</i> Sugar Maple	Sawtimber Pulpwood	0.2 8 25 2 23 6 1 1 4 11 5 6 1	MBF Cords Cords <i>Cords</i> <i>Cords</i> Cords <i>Cords</i> <i>Cords</i> <i>Cords</i> Cords <i>Cords</i> <i>Cords</i> Cords	3.0	\$851.35
7	Red Maple Balsam Fir Mixed Aspen <i>B. T. Aspen</i> <i>Quaking Aspen</i> Mixed Hardwood <i>Black Cherry</i> <i>Paper Birch</i> <i>Red Maple</i> Mixed Spruce <i>Black Spruce</i> <i>White Spruce</i> Sugar Maple	Sawtimber Pulpwood	0.6 20 65 4 61 16 4 2 10 26 12 14 4	MBF Cords Cords <i>Cords</i> <i>Cords</i> Cords <i>Cords</i> <i>Cords</i> <i>Cords</i> Cords <i>Cords</i> <i>Cords</i> Cords	7.8	\$2,205.95
8	Black Cherry Paper Birch Balsam Fir Mixed Aspen <i>Quaking Aspen</i> Mixed Hardwood <i>Black Cherry</i> <i>Paper Birch</i> <i>Red Maple</i> Mixed Spruce <i>Black Spruce</i> <i>White Spruce</i> Sugar Maple	Sawtimber Pulpwood	1.2 1.1 41 363 363 31 3 22 6 11 3 8 6	MBF MBF Cords Cords <i>Cords</i> Cords <i>Cords</i> <i>Cords</i> <i>Cords</i> Cords <i>Cords</i> <i>Cords</i> Cords	13.7	\$9,296.50
TOTAL:			13.1	MBF		
TOTAL:			3,290	Cords		

Sale Specific Conditions & Requirements

Sale Name: North Smoke Mix

Sale Number: 32-018-25 Seq#: 1

1 - Sale Area

1.2 - Boundaries

1.2.1 - Painted Boundaries (9/19)

The sale boundary and Payment Unit boundaries are marked and identified by red and yellow paint. Exterior sale boundary lines against state are marked with red paint. Interior Payment Unit boundaries are marked with yellow paint. Retention patches are marked with red paint; no operating of equipment or harvesting activities may occur within these areas. The painted boundary line trees are not Included Timber and are to be protected unless marked with orange paint. Yellow painted trees designating an interior Payment Unit boundary are only to be cut when all surrounding Payment Units have been paid.

2 - Timber Specifications

2.1 - Included Timber

2.1.1 - Clearcut Unit(s) with Unmerchantable Trees (6/14)

Within Payment Unit(s) 1, cut all trees that are two (2) inches or more at DBH, except do not cut basswood, cedar, hemlock, or pine.

Within Payment Unit(s) 2, cut all trees that are two (2) inches or more at DBH, except do not cut yellow birch, American elm, cedar, hemlock, or pine.

Within Payment Unit(s) 4 & 5, cut all trees that are two (2) inches or more at DBH, except do not cut basswood, black cherry, white spruce, cedar, hemlock, or pine.

Within Payment Unit(s) 6, 7, & 8, cut all trees that are two (2) inches or more at DBH, except do not cut cedar, hemlock, or pine.

2.1.3 - Cut Tree Marked Unit(s) (12/08)

Within Payment Unit(s) 3, all trees are designated for cutting when marked with orange paint above and below stump height, regardless of merchantability. In addition, cut all spruce and fir which meet minimum piece specifications in 2.2 Utilization.

3 - Payments

3.4 - Damaged Timber

3.4.1 - Damaged Timber (12/24)

General Condition and Requirement 3.4 Damaged Timber, defines liquidated damages for undesignated live merchantable trees which are cut or injured.

No damage is acceptable to undesignated live merchantable trees. Within the Sale Area, if more than 10% of trees (> 4.5" DBH) within a specified area of the sale are damaged, liquidated damages will be assessed for all trees damaged. Rates will be in accordance with General Condition and Requirement 3.4 Damaged Timber.

4 - Transportation

4.1 - Construction

4.1.3 - Slash and Earthen Piles (8/04)

Piles or windrows of earth along roads and landings that have been widened or constructed shall be leveled. Slash from road maintenance or construction, including stumps, shall be dispersed throughout the sale.

4.1.4 - Timber Removed for Construction (3/23)

Trees cut or damaged in the process of pre-approved road, landing, or skid trail construction will be decked in an area separate from other Designated Timber and not removed until measured by the Sale Administrator. Payment will be made at contract prices or average prices, if not on the contract.

4.1.6 - Road Construction (4/24)

Construction of new roads or improvements of existing roads shall be done in such a way as to minimize the environmental and visual impacts. Merchantable trees shall be cut and utilized unless otherwise directed. Non-merchantable trees shall be severed and laid flat on the ground. Slash shall be scattered, and not left in windrows and kept a minimum of 10 feet back from the road edge. Stumps shall be set upright, not left on edge, and be moved at least 10 feet away from the road edge. Disturbed soil shall be feathered into the woods and not left in berms or windrows.

4.1.7 - Road Closure (10/11)

All new roads built into the sale must be blocked to vehicle traffic upon completion of the sale. Overgrown roads that are reopened shall be considered new roads. In general, this will require constructing a four (4') foot high berm of stumps and logs covered with earth. Temporary berms may be required if no sale activity occurs for 30 or more consecutive days. Contact the Sale Administrator for specific details of design and placement.

4.2 - Maintenance

4.2.1 - Hauling Restriction (12/08)

Hauling may be restricted on forest roads by the Unit Manager or his/her representative. The restriction may occur during wet weather conditions.

4.2.3 - Road maintenance (8/13)

The following road maintenance may be needed: Within 60 days of completion of hauling, or if no hauling occurs for 60 days, the road must be maintained and graded. This includes cleaning of drainage areas, grading, crowning and filling with gravel, if necessary. Damages will be assessed if grading/repair does not occur.

5 - Operations

5.1 - Notification

5.1.1 - Pre-sale Conference (10/16)

A pre-sale conference between the Purchaser and Sale Administrator is required prior to beginning any operations. The Unit Manager or his/her representative must be contacted at least 5 days in advance to schedule the conference.

5.2 - Conduct of Operations

5.2.3 - Operating Restrictions

5.2.3.1 - Operating Restrictions (9/11)

Within Payment Unit(s) 2-8, unless changed by written agreement, cutting, skidding, and hauling are limited to frozen conditions, generally the period of December 1 to April 1. This restriction is due to wet soils and deer winter range.

5.2.3.3 - Bark Slippage Restriction (3/09)

Within Payment Unit(s) 3, unless changed by written agreement, cutting and skidding are not permitted during the period of April 15 to July 15. This restriction is because of bark slippage.

5.2.32 - Decking/Landing Restoration (9/13)

All decking and landing areas must have the surface area restored to a condition equal to or better than before. This is to ensure the proper regeneration of the stand. Wood debris, chips and "cookies" from trimmings must be removed or scattered away from landing and loading areas and may not be windrowed on the edge.

5.2.37 - No Decking Areas (12/08)

No decking is allowed within 50 feet of Trail G/Trail 33 without permission of the Unit Manager or his/her representative.

5.2.38 - No Decking Against Live Trees (2/04)

Cut products may not be decked against unmarked or designated leave trees.

5.2.39 - ORV Trail/Route Protection (4/18)

Trail G is an ORV trail or route and is shown on the Timber Sale Map. Do not cut trees or damage posts with yellow ORV markers. All stumps within 20 feet of the trail must be cut flush with the ground. Maintain a 20-foot-wide slash, debris, and rut free zone daily using the ORV trail or route as the centerline. Skidding across the trail or route may only occur in locations approved by the Sale Administrator. If the ORV trail is used, it must be maintained and restored to a condition equal to, or better than, before the sale.

5.2.41 - Snowmobile Trail Protection (9/11)

Trail 33 is a snowmobile trail and is shown on the Timber Sale Map. Do not cut or damage posts with orange trail markers or traffic control signs. If the trail is used, it must be maintained and restored to a condition equal to or better than before the sale. If the trail road is to be used for hauling during the snowmobile season, then a snow-covered base must be left on the trail, and any trucking of forest products shall only occur from Monday to Thursday during daylight hours. Maintain a 20-foot-wide slash, debris, and rut free zone daily using the snowmobile trail as the centerline. No decking of forest products will be permitted along the snowmobile trail. All stumps within 20 feet of the snowmobile trail must be cut at ground level.

5.4 - Soil Protection

5.4.1 - Rutting Restriction, General (7/16)

Operations are to cease immediately if equipment and weather conditions result in rutting of roads and/or skid trails which is 12 inches or greater in depth and 50 feet in length. The Unit Manager or his/her representative may restrict hauling and/or skidding if ruts exceed the specified depth. With the Unit Manager or his/her representative's approval, the Purchaser may return to the area when the risk of rutting has decreased.

5.7 - Protection of Historical Sites

5.7.1 - Historical Sites (7/12)

The Purchaser shall not cut live or dead trees or operate equipment within historical sites. Historical sites are excluded from the Sale Area with a red boundary line. The Purchaser shall protect historical sites from damage by the Purchaser's operations. If Purchaser's operations have cut or damaged historical sites through carelessness, the Purchaser shall pay \$1500 as fixed, agreed and liquidated damages for each acre or part thereof cut or damaged.

6 - Safety and Fire Prevention

6.2 - Signing

6.2.1 - Road Posting (10/20)

The Purchaser is responsible for posting and maintaining caution signs on Little West Road and CR 557 prior to beginning operations. The road must be posted at appropriate distances from the Sale Area to warn of logging activity and truck traffic. Signs must be removed when harvest operations are suspended or completed. The Purchaser will provide these signs.

6.2.2 - Snowmobile Trail Posting (10/20)

The Purchaser is responsible for posting and maintaining caution signs on Trail 33 prior to beginning operations during the snowmobile season (approximately December 1 to March 31). The trail must be posted at appropriate distances from the Sale Area to warn of logging activity and truck traffic. Signs must be removed when harvest operations are suspended or completed. The Purchaser will provide these signs.

6.2.3 - Recreational Trail Posting (10/20)

The Purchaser is responsible for posting and maintaining caution signs on Trail G prior to beginning operations. The trail must be posted at appropriate distances from the Sale Area to warn of logging activity and truck traffic at both ends of the trail. Signs must be removed when harvest operations are suspended or completed. The Purchaser will provide these signs.



TIMBER SALE MAP

This information provided by authority of Part 525, 1994 PA 451, as amended.

Sale Number

32-018-25

Date

08/28/2025

Forest Management Unit

Gwinn Mgt Unit

County

Marquette

Mapped By: Rosten

Cruised By: Gwinn Staff

Scale

1:16,500

Page

1

Of

1

Township
43N

Range
25W

Section(s) and

Subdivision(s) Sec. 28 W1/2SW; Sec. 29 S1/2NE,SE; Sec. 32 NE,NESE; Sec. 33 SWNW,NWSW;

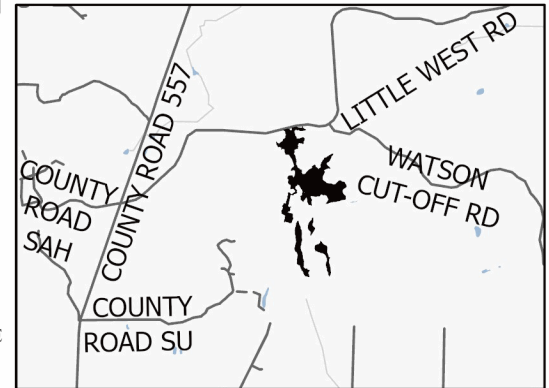
Cover Type

A = Aspen	J = Jack Pine	O = Oak	U = Upland Brush
B = Paper Birch	K = Rock	P = Lowland Poplar	UM = Upland Mix Forest
C = Cedar	L = Lowland Brush	Q = Mixed Swamp Conifer	V = Bog or Marsh
D = Treed Bog	LM = Lowland Mix Forest	R = Red Pine	W = White Pine
E = Swamp Hardwoods	M = Maple, Beech, Birch	S = Black Spruce	X = Non Stocked
F = Spruce/Fir	MC = Mixed Conifer	T = Tamarack	Y = Sand
G = Grass	MD = Mixed Deciduous	Z = Water	
H = Hemlock	N = Marsh		

Density

0 = Non Stocked	5 = Pole Timber Medium
1 = Seedling Sapling Poor	6 = Pole Timber Well
2 = Seedling Sapling Medium	7 = Saw Timber Poor
3 = Seedling Sapling Well	8 = Saw Timber Medium
4 = Pole Timber Poor	9 = Saw Timber Well

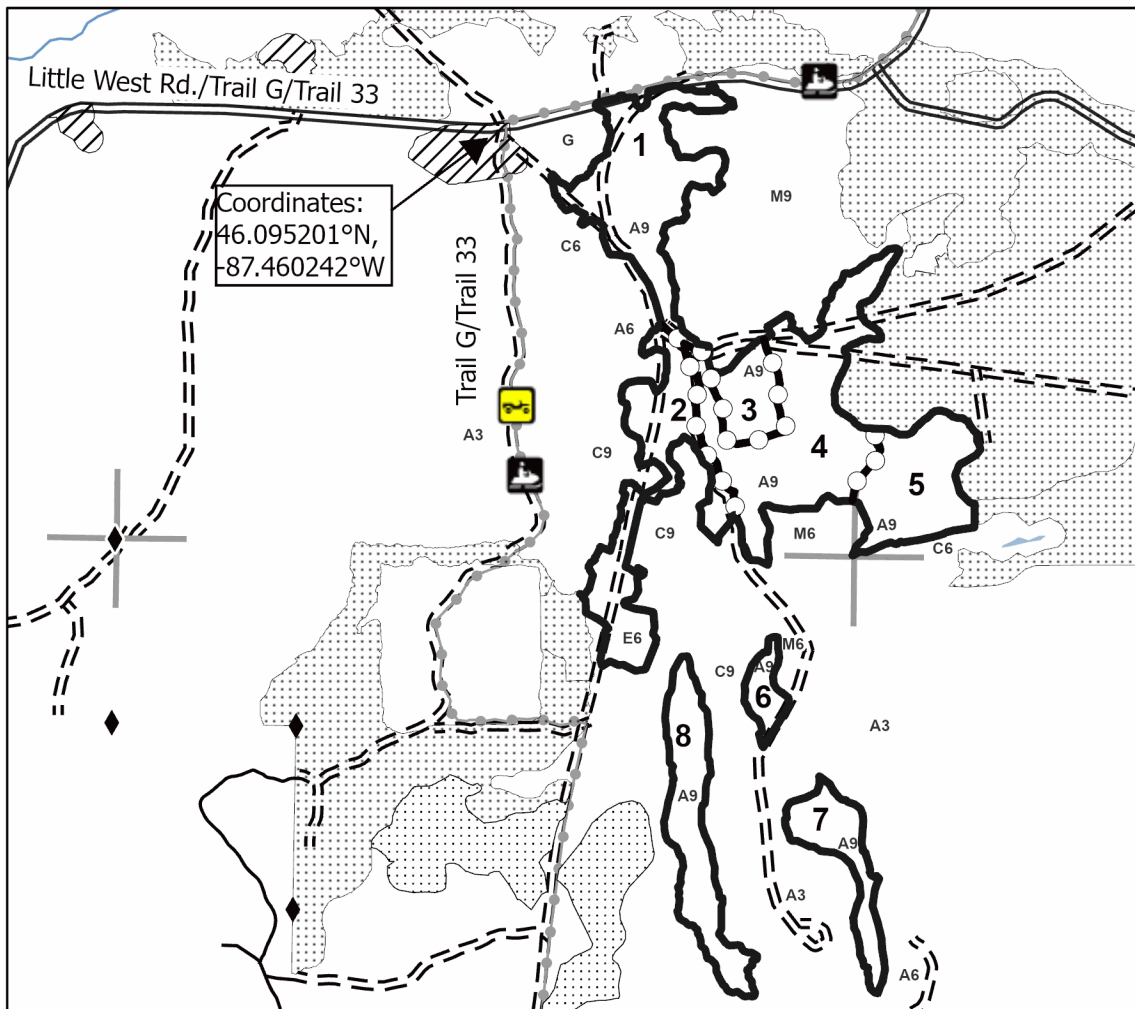
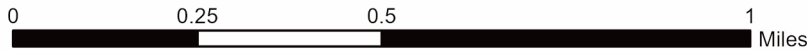
Locator Map 1:100,000



North Smoke Mix

112.0 Acres

Payment Unit Number	Acres	Payment Unit Number	Acres
1	20.6	5	14.2
2	18.2	6	3
3	6	7	7.8
4	28.5	8	13.7



Legend

- Against State (Red)
- Payment Unit (Yellow)
- Recreational Trails
- Primary Forest Road
- Forest Access Route
- Paved Road
- ORV Route
- Snowmobile
- Survey Corners
- MIRIS Section Corner
- Nearby Timber Sale
- Special Protection Area

Use QR Code to
open Map in App



Little Badger Den Mix (32-017-25)

T43N, R25W, SEC. 21; T43N, R25W, SEC. 22; T43N, R25W, SEC. 28; T43N,

In response to the notice of sale to be held 2:00 p.m. (local time) on December 15, 2025, I am hereby submitting my sealed bid (firm offer) for the following forest products to be cut. Bids for individual species must be at or above the advertised price. All non-responsive bid forms may be rejected.

<u>PRODUCTS & SPECIES</u>	<u>ESTIMATED VOLUME*</u>	<u>ADVERTISED PRICE</u>	<u>BID PRICE/UNIT</u>
Sawtimber			
Basswood	87.6 MBF	\$ 46.00/MBF	\$ _____
Sugar Maple	42.3 MBF	\$ 199.00/MBF	\$ _____
Pulpwood			
Balsam Fir	175 Cords	\$ 9.35/Cord	\$ _____
Balsam Poplar	118 Cords	\$ 22.75/Cord	\$ _____
Basswood	288 Cords	\$ 14.40/Cord	\$ _____
Mixed Aspen	3,577 Cords	\$ 22.75/Cord	\$ _____
Mixed Hardwood	86 Cords	\$ 11.10/Cord	\$ _____
Mixed Spruce	92 Cords	\$ 10.30/Cord	\$ _____
Sugar Maple	742 Cords	\$ 11.10/Cord	\$ _____

*The volumes are statistically estimated within plus (+) or minus (-) 9.96 percent at 95% confidence level. These estimated volumes are final and not subject to adjustment. Prospective bidders are urged to examine this timber and to make their own estimates of quantity and quality.

I understand that any or all bids may be rejected. All bids must be signed and all bid items must be bid or the bid form may be rejected. I also understand that consideration and awarding a contract will be based upon my past performance and ability to complete the contract based upon equipment and staffing subject to my control.

FEDERAL ID: ____ - ____ - ____ or SOCIAL SECURITY NUMBER: ____ - ____ - ____

Company or individual bidding: _____

Company representative's name: _____

Address: _____

City: _____ State: _____ Zip: _____

IF AVAILABLE, PLEASE PLACE THE PERSONALIZED LABEL FROM YOUR PROSPECTUS IN THE ABOVE BOX.

Individual or company representative's signature: _____ Date: _____

Phone number : _____ Email (optional): _____

**THE WINNING BIDDER MUST COMPLETE THE VERIFICATION OF WORKER'S DISABILITY COMPENSATION ACT
COMPLIANCE (ON REVERSE SIDE IF DOUBLE SIDED) WITHIN 21 DAYS OF SALE AWARD DATE**



TIMBER SALE VERIFICATION OF WORKER'S DISABILITY COMPENSATION ACT COMPLIANCE

As required by Act 317, P.A. 1969 (Worker's Compensation) and
Part 5 of Act 451 of 1994, as amended.

FOR DEPARTMENT USE ONLY

Sale Number (XX - XXX - XX - XX)

Forest Management Unit:

VERIFICATION OF WORKER'S DISABILITY COMPENSATION ACT COMPLIANCE

- This verification must be completed and submitted within 21 days of contract award and prior to the issuance of the timber sale contract.
- In addition, if boxes 2B or 2C are checked, then Notice of Exclusion or Certificate of Insurance must be submitted within twenty-one (21) days of the contract award and prior to the issuance of the timber sale contract.
- All information must be typed or printed except for written signatures.

Please Check Appropriate Categories:

1. My business is organized as (you **must** check one of the boxes below):
 - A. ☐ Sole Proprietorship (individual)
 - B. ☐ Partnership
 - C. ☐ Corporation
2. You **must** check one of the boxes below:
 - A. ☐ I certify my business is a sole proprietorship and it has no employees but the sole proprietor. I am not subject to the Worker's Compensation Laws.
 - B. ☐ I certify my business has satisfied its obligation to the Worker's Compensation Act through the use of an approved Notice of Exclusion (BWC-337, Rev. 5/96). I will provide a copy of the Notice of Exclusion within 21 days of the contract award. (For questions or a copy of the BWC-337, please call the Worker's Compensation Bureau at 517-322-1195).
 - C. ☐ I certify my business has a Worker's Compensation Policy. I will provide an original Certificate of Insurance within twenty-one (21) days of the contract award.
3. If you have checked item 2(A) or 2(B), you **must** indicate the number of **both** full-time and part-time employees, other than yourself, including family members and active partners (if none, you must enter "0").

_____ Full-time Employees

_____ Part-time Employees

Name of Business		Federal ID (or) Social Security No.
Address		Telephone ()
City	State	ZIP

I hereby certify that the above information is true and correct. I agree to notify the Michigan DNR of any changes that occur in factors affecting my coverage during any of my present and future operations.

Signature of Owner or Authorized Representative

Title

Date

Please complete the "SEALED BID" information on the next page

North Smoke Mix (32-018-25)

T43N, R25W, SEC. 28; T43N, R25W, SEC. 29; T43N, R25W, SEC. 32; T43N,

In response to the notice of sale to be held 2:00 p.m. (local time) on December 15, 2025, I am hereby submitting my sealed bid (firm offer) for the following forest products to be cut. Bids for individual species must be at or above the advertised price. All non-responsive bid forms may be rejected.

<u>PRODUCTS & SPECIES</u>	<u>ESTIMATED VOLUME*</u>	<u>ADVERTISED PRICE</u>	<u>BID PRICE/UNIT</u>
Sawtimber			
Basswood	1.5 MBF	\$ 46.00/MBF	\$ _____
Black Cherry	1.2 MBF	\$ 33.00/MBF	\$ _____
Paper Birch	2.0 MBF	\$ 83.00/MBF	\$ _____
Red Maple	0.8 MBF	\$ 84.00/MBF	\$ _____
Sugar Maple	7.6 MBF	\$ 199.00/MBF	\$ _____
Pulpwood			
Balsam Fir	284 Cords	\$ 9.35/Cord	\$ _____
Balsam Poplar	67 Cords	\$ 22.75/Cord	\$ _____
Basswood	55 Cords	\$ 14.40/Cord	\$ _____
Mixed Aspen	2,331 Cords	\$ 22.75/Cord	\$ _____
Mixed Hardwood	162 Cords	\$ 11.10/Cord	\$ _____
Mixed Spruce	125 Cords	\$ 10.30/Cord	\$ _____
Sugar Maple	171 Cords	\$ 11.10/Cord	\$ _____
Tamarack	95 Cords	\$ 12.65/Cord	\$ _____

*The volumes are statistically estimated within plus (+) or minus (-) 13.66 percent at 95% confidence level. These estimated volumes are final and not subject to adjustment. Prospective bidders are urged to examine this timber and to make their own estimates of quantity and quality.

I understand that any or all bids may be rejected. All bids must be signed and all bid items must be bid or the bid form may be rejected. I also understand that consideration and awarding a contract will be based upon my past performance and ability to complete the contract based upon equipment and staffing subject to my control.

FEDERAL ID: ____ - ____ - ____ or SOCIAL SECURITY NUMBER: ____ - ____ - ____

Company or individual bidding: _____

Company representative's name: _____

Address: _____

City: _____ State: _____ Zip: _____

IF AVAILABLE, PLEASE PLACE THE PERSONALIZED LABEL FROM YOUR PROSPECTUS IN THE ABOVE BOX.

Individual or company representative's signature: _____ Date: _____

Phone number : _____ Email (optional): _____

**THE WINNING BIDDER MUST COMPLETE THE VERIFICATION OF WORKER'S DISABILITY COMPENSATION ACT
COMPLIANCE (ON REVERSE SIDE IF DOUBLE SIDED) WITHIN 21 DAYS OF SALE AWARD DATE**



TIMBER SALE VERIFICATION OF WORKER'S DISABILITY COMPENSATION ACT COMPLIANCE

As required by Act 317, P.A. 1969 (Worker's Compensation) and
Part 5 of Act 451 of 1994, as amended.

FOR DEPARTMENT USE ONLY

Sale Number (XX - XXX - XX - XX)

Forest Management Unit:

VERIFICATION OF WORKER'S DISABILITY COMPENSATION ACT COMPLIANCE

- This verification must be completed and submitted within 21 days of contract award and prior to the issuance of the timber sale contract.
- In addition, if boxes 2B or 2C are checked, then Notice of Exclusion or Certificate of Insurance must be submitted within twenty-one (21) days of the contract award and prior to the issuance of the timber sale contract.
- All information must be typed or printed except for written signatures.

Please Check Appropriate Categories:

1. My business is organized as (you **must** check one of the boxes below):
 - A. ☐ Sole Proprietorship (individual)
 - B. ☐ Partnership
 - C. ☐ Corporation
2. You **must** check one of the boxes below:
 - A. ☐ I certify my business is a sole proprietorship and it has no employees but the sole proprietor. I am not subject to the Worker's Compensation Laws.
 - B. ☐ I certify my business has satisfied its obligation to the Worker's Compensation Act through the use of an approved Notice of Exclusion (BWC-337, Rev. 5/96). I will provide a copy of the Notice of Exclusion within 21 days of the contract award. (For questions or a copy of the BWC-337, please call the Worker's Compensation Bureau at 517-322-1195).
 - C. ☐ I certify my business has a Worker's Compensation Policy. I will provide an original Certificate of Insurance within twenty-one (21) days of the contract award.
3. If you have checked item 2(A) or 2(B), you **must** indicate the number of **both** full-time and part-time employees, other than yourself, including family members and active partners (if none, you must enter "0").

_____ Full-time Employees

_____ Part-time Employees

Name of Business		Federal ID (or) Social Security No.
Address		Telephone ()
City	State	ZIP

I hereby certify that the above information is true and correct. I agree to notify the Michigan DNR of any changes that occur in factors affecting my coverage during any of my present and future operations.

Signature of Owner or Authorized Representative

Title

Date

Please complete the "SEALED BID" information on the next page

Ridge Runner Hardwood (32-006-25)
T46N, R25W, SEC. 12; Marquette COUNTY

In response to the notice of sale to be held 2:00 p.m. (local time) on December 15, 2025, I am hereby submitting my sealed bid (firm offer) for the following forest products to be cut. Bids for individual species must be at or above the advertised price. All non-responsive bid forms may be rejected.

<u>PRODUCTS & SPECIES</u>	<u>ESTIMATED VOLUME*</u>	<u>ADVERTISED PRICE</u>	<u>BID PRICE/UNIT</u>
Sawtimber			
Red Maple	9.0 MBF	\$ 84.00/MBF	\$ _____
Red Oak	53.9 MBF	\$ 155.00/MBF	\$ _____
Sugar Maple	20.8 MBF	\$ 199.00/MBF	\$ _____
Pulpwood			
Balsam Fir	19 Cords	\$ 9.35/Cord	\$ _____
Mixed Hardwood	231 Cords	\$ 11.10/Cord	\$ _____
Red Oak	105 Cords	\$ 14.95/Cord	\$ _____
Red Pine	17 Cords	\$ 47.20/Cord	\$ _____
White Pine	3 Cords	\$ 13.15/Cord	\$ _____
White Spruce	12 Cords	\$ 10.30/Cord	\$ _____

*The volumes are statistically estimated within plus (+) or minus (-) 20.14 percent at 95% confidence level. These estimated volumes are final and not subject to adjustment. Prospective bidders are urged to examine this timber and to make their own estimates of quantity and quality.

I understand that any or all bids may be rejected. All bids must be signed and all bid items must be bid or the bid form may be rejected. I also understand that consideration and awarding a contract will be based upon my past performance and ability to complete the contract based upon equipment and staffing subject to my control.

FEDERAL ID: ____ - ____ - ____ or SOCIAL SECURITY NUMBER: ____ - ____ - ____

Company or individual bidding: _____

Company representative's name: _____

Address: _____

City: _____ State: _____ Zip: _____

IF AVAILABLE, PLEASE PLACE THE PERSONALIZED LABEL FROM YOUR PROSPECTUS IN THE ABOVE BOX.

Individual or company representative's signature: _____ Date: _____

Phone number : _____ Email (optional): _____

**THE WINNING BIDDER MUST COMPLETE THE VERIFICATION OF WORKER'S DISABILITY COMPENSATION ACT
COMPLIANCE (ON REVERSE SIDE IF DOUBLE SIDED) WITHIN 21 DAYS OF SALE AWARD DATE**



TIMBER SALE VERIFICATION OF WORKER'S DISABILITY COMPENSATION ACT COMPLIANCE

As required by Act 317, P.A. 1969 (Worker's Compensation) and
Part 5 of Act 451 of 1994, as amended.

FOR DEPARTMENT USE ONLY

Sale Number (XX - XXX - XX - XX)

Forest Management Unit:

VERIFICATION OF WORKER'S DISABILITY COMPENSATION ACT COMPLIANCE

- This verification must be completed and submitted within 21 days of contract award and prior to the issuance of the timber sale contract.
- In addition, if boxes 2B or 2C are checked, then Notice of Exclusion or Certificate of Insurance must be submitted within twenty-one (21) days of the contract award and prior to the issuance of the timber sale contract.
- All Information must be typed or printed except for written signatures.

Please Check Appropriate Categories:

1. My business is organized as (you **must** check one of the boxes below):
 - A. ☐ Sole Proprietorship (individual)
 - B. ☐ Partnership
 - C. ☐ Corporation
2. You **must** check one of the boxes below:
 - A. ☐ I certify my business is a sole proprietorship and it has no employees but the sole proprietor. I am not subject to the Worker's Compensation Laws.
 - B. ☐ I certify my business has satisfied its obligation to the Worker's Compensation Act through the use of an approved Notice of Exclusion (BWC-337, Rev. 5/96). I will provide a copy of the Notice of Exclusion within 21 days of the contract award. (For questions or a copy of the BWC-337, please call the Worker's Compensation Bureau at 517-322-1195).
 - C. ☐ I certify my business has a Worker's Compensation Policy. I will provide an original Certificate of Insurance within twenty-one (21) days of the contract award.
3. If you have checked item 2(A) or 2(B), you **must** indicate the number of **both** full-time and part-time employees, other than yourself, including family members and active partners (if none, you must enter "0").

_____ Full-time Employees

_____ Part-time Employees

Name of Business		Federal ID (or) Social Security No.
Address		Telephone ()
City	State	ZIP

I hereby certify that the above information is true and correct. I agree to notify the Michigan DNR of any changes that occur in factors affecting my coverage during any of my present and future operations.

Signature of Owner or Authorized Representative

Title

Date

Please complete the "SEALED BID" information on the next page