



**DEPARTMENT OF NATURAL RESOURCES
STATE OF MICHIGAN
TIMBER SALE PROSPECTUS #7754**

SCHEDULED SALE DATE AND TIME: 10:00 a.m. (local time) on December 15, 2025.

LOCATION: SAULT DNR CUSTOMER SERVICE CENTER, 4131 S. M-129, SAULT STE MARIE, MI 49783.

PROSPECTUS NOTE: The bidder is advised to inspect the sale area and review the location, estimated volumes, operating costs and contract terms of proposed sales. Please be aware that some landowners may request 60 days or more notice for access across their land.

Notice is hereby given that bids will be received by the Unit Manager, SAULT STE MARIE MANAGEMENT UNIT, for certain timber on the following described lands:

D.I. Deep Abyss (45-011-25) / T41N, R06E, SEC. 10, NW.

T41N, R06E, SEC. 11, N1/2SW.

T41N, R06E, SEC. 9, E1/2NE.

Chippewa County, Advertised Price \$20,011.25, 82.6 Acres, Hardwood, White Pine.

SALE NOTE: Seasonal restriction from Oct 1- March 31. Rocky ground. Snowmobile trail is used for access.

A recreation site such as a trail, pathway, or campground is within the sale area or the vicinity. Certain restrictions/specifications may be applicable including time restrictions.

DI Distant Cuts (45-012-25) / T41N, R06E, SEC. 17, NENW,S1/2NW,N1/2SW.

T41N, R06E, SEC. 5, SESW.

T41N, R06E, SEC. 7, NENW,S1/2NW,W1/2NE,SW.

T41N, R06E, SEC. 8, N1/2NW,SENE,NWNE,S1/2NE.

T41N, R06E, SEC. 8, N1/2SE,SESE.

T41N, R06E, SEC. 9, S1/2NW,SW.

Chippewa County, Advertised Price \$66,437.30, 352.6 Acres, Aspen, N White Cedar.

SALE NOTE: This sale will require access from private lands for Payment Units 1-5.

Payment Units 10 & 11 will be amended for a small (18.56 cord) reduction in cedar volume due to a need for strategic reserve trees.

A recreation site such as a trail, pathway, or campground is within the sale area or the vicinity. Certain restrictions/specifications may be applicable including time restrictions. Access may be through private land.

DI Backyard Boards (45-013-25) / T41N, R06E, SEC. 4, NWNW.

T41N, R06E, SEC. 5, NENE.

T41N, R06E, SEC. 6, NENW,NWNE.

T42N, R06E, SEC. 31, SESW,SWSE.

T42N, R06E, SEC. 32, NESW,W1/2SE.

Chippewa County, Advertised Price \$8,365.85, 69.8 Acres, Hardwood, Aspen.

SALE NOTE: This sale will require access through private property.

Access may be through private land.

BID INSTRUCTIONS (VER. 10/10/2022):

1. Scheduled Bid Location, Date, and Time (2/11)

Bids must be received by the Unit Manager, SAULT STE MARIE OFFICE, 4131 S. M-129, Sault Ste Marie, MI 49783, no later than 10:00 a.m. (local time) on December 15, 2025. For further information concerning this sale, contact Josh Brinks at 906-203-0210 extension .

2. Bidder's Qualifications (10/22)

If all or part of a timber sale was prepared by a private contractor, the contractor and that contractor's company are not permitted to bid on the timber sale. A person must be 18 years of age or older to purchase timber. Permanent employees of the Department of Natural Resources or members of their immediate household may not bid. Former employees, in the permanent or seasonal class, may not bid until 3 months after the last day of active duty. Bids will not be accepted from individuals or companies appearing on the DNR/FRD No-Bid List. This list contains the names of purchasers who previously failed to execute a contract within 21-days or who have a history of poor performance.

3. Preparation of Sealed Bids (5/16)

Bid Forms may be completed online thru Michigan DNR Timber Sale Online Bidding (OLB) at www.michigan.gov/timberbidding or by completing the hardcopy Bid Form found in the Timber Sale Prospectus . Hardcopy Bid Forms shall be manually signed in ink. Registration in OLB is considered your 'signature' for all bids submitted thru that system. Bid prices must be entered for each species and product in the Bid Price column for all material subject to bidding and all fill-in blanks must be completed. If erasures or other changes appear on the hardcopy Bid Form, each erasure or change must be initialed by the person signing the bid.

4. Submission of Sealed Bids (5/16)

Bid forms may be obtained from the Unit Manager or thru OLB. Bids may be submitted hardcopy or thru OLB. All hardcopy bids must be submitted on the bid form and in an envelope clearly identified as described in this section. NOTE: Only one bid form per bid envelope. Sealed bids must be submitted to the Unit office designated in the prospectus and must be submitted at or prior to the time established in the prospectus. The envelope should show on the outside (a) the sale name or number and (b) the date and time of bid opening, as shown in the prospectus. Bids received after the time specified in the sale prospectus are late bids and will be rejected.

It is possible for a bidder to submit multiple bids on a single sale. For example, a bid may be submitted hardcopy and a bid may be submitted thru OLB. Or, two bidders from the same company could both submit bids on the same sale. If this were to happen, the State would accept all bids received and award the contract accordingly. All bidding and contractual requirements would apply to all bids received.

5. Public Opening of Sealed Bids (7/16)

If conditions permit, the sealed bids will be publicly opened and posted at the time and place set in the prospectus.

If a bidder, present at a bid opening, has submitted bids on more than one sale, that bidder may withdraw their unopened bid envelopes or announce the withdrawal of their online bid after being declared the successful bidder on one sale.

6. Award of Contract (1/11)

Award of the contract will be made to the Bidder whose bid, conforming to the prospectus, is most advantageous to the State of Michigan on the basis of total value at rates bid for the estimated quantities. The State reserves the right to reject any bid or waive any minor irregularity in bids received. A written award mailed (or otherwise furnished) to the successful Bidder shall be deemed to result in a binding contract without further action by either party.

7. Down Payment (1/11)

The Bidder to whom award is made must make a down payment within 21 days of the sale award. The amount of the down payment will be calculated as shown in the Bond and Payment Schedule of this prospectus. Only cash may be used to meet this requirement.

8. Performance Security (1/11)

As guarantee of faithful performance, a cash bond, certificate of deposit, surety bond or irrevocable letter of credit (LOC) is required within 21 days of the sale award. The amount of the performance security is shown in the Bond and

Payment Schedule of this prospectus. If an LOC or surety is used, the coverage must extend for at least 6 months beyond the contract expiration.

9. Worker's Compensation (10/22)

Purchaser shall obtain worker's compensation insurance to cover claims under Michigan's Worker's Disability Compensation Act of 1969 or similar employee benefit act of any other state applicable to an employee. Verification of Worker's Disability Compensation Act Compliance must be completed and submitted within 21 days of contract award and prior to the issuance of the timber sale contract. In addition, if applicable, Notice of Exclusion or Certificate of Insurance must also be submitted.

10. Timber Sale Contract (10/22)

Additional conditions and requirements common to all timber sales are listed on the timber sale contract (R4031) and are available on line at www.michigan.gov/timber. Contact the Unit Manager for additional information or a sample contract. Within 21 days of the date of the award letter, the bidder must sign the contract and provide the required down payment, performance security, and verification of worker's disability compensation. The down payment and performance security shall be in accordance with the provisions of the timber sale contract, in the sums stated in this prospectus. If these actions are not taken, then the Bidder, the Bidder's corporation, and the corporation's principals may not be permitted to bid on State timber sales for a period of 3 months after the first offense, 6 months after the second offense, and 1 year after the third offense. An offense will only be counted against the Bidder for 5 years. In addition, the Bidder certifies that if awarded this contract, the Bidder will complete the timber sale contract in accordance with its terms and any modifications thereof including requirements to purchase, cut, and remove the included timber by the expiration date.

Payment Unit values in the State Forest Timber Sale Contract are calculated based on the advertised value of the Payment Unit as a percentage of the total advertised value of the contract. The advertised value of each Payment Unit is given in the Description of Timber by Payment Unit table on the Timber Sale Information page. For example, if the value of Payment Unit 1 is advertised as \$1,500 and the total Timber Sale value is advertised as \$10,000, the contract price for Payment Unit 1 will be 15% of the total bid price ($\$1,500/\$10,000 * 100$).

11. Disclaimer of Estimates and Bidder's Warranty of Inspection (10/22)

Before submitting this bid, the Bidder is advised and cautioned to inspect the sale area, review the requirements of the sale contract, and take other steps as may be reasonably necessary to ascertain the location, estimated volumes, construction estimates, and operating costs of the proposed sale. Failure to do so will not relieve the Bidder from responsibility for completing the contract.

The Bidder warrants that this bid is submitted solely on the basis of the Bidder's examination and inspection of the quality and quantity of the timber offered for sale and the Bidder's opinion of the value thereof and the costs of recovery. No reliance should be placed on the State of Michigan's estimates of timber quality, quantity or costs of recovery. Bidder further acknowledges that the State of Michigan: (i) expressly disclaims any warranty of fitness of timber for any purpose; (ii) offers this timber as is without any warranty of quality (merchantability) or quantity and (iii) expressly disclaims any warranty as to the quantity or quality of timber sold.

12. Certification and Chain-of-Custody (10/22)

Unless otherwise indicated in the contract under section 7 – Other Conditions of the Sale Specific Conditions & Requirements, the area encompassed by this timber sale is certified to the standards of the Forest Stewardship Council (FSC) - Certificate #SCS-FM/COC-00090N and the Sustainable Forestry Initiative (SFI) - Certificate #NSF-SFIS-5Y031-SF5. Forest products from this sale may be delivered to the mill as "FSC 100% and / or SFI certified" as long as the contractor hauling the forest products is chain-of-custody (COC) certified or covered under a COC certificate from the destination mill. The purchaser is responsible for maintaining COC after leaving the sale area.

13. Good Neighbor Authority (GNA) Requirements (10/22)

If the name of this timber sales contains the acronym GNA, it is authorized by the Good Neighbor Authority (GNA) and covered by various agreements between the U.S. Forest Service and the State. The timber sale occurs on federal land and the following conditions apply:

GNA contracts on US Forest Service land will not be awarded to purchasers on the Federal list of excluded parties. The System for Award Management (SAM) will be checked for active excluded parties prior to award of contract. In

addition, the Bidder to whom award is made must complete an Assurance Regarding Felony Conviction or Tax Delinquent Status for Corporate Applicants (AD-3031).

14. Good Neighbor Authority (GNA) Requirements, con't (10/22)

Bidder certifies, by signing this bid form, that to the best of Bidder's knowledge that the following representations are accurate and complete.

- a. That the Bidder and its principals are not presently debarred, suspended, proposed for debarment, declared ineligible, or voluntary excluded from timber sales (covered transactions) by any Federal department or agency.
- b. That the Bidder and its principals have not within a 3-year period preceding this bid been convicted of or had a civil judgment rendered against them for commission of fraud or a criminal offense in connection with obtaining , attempting to obtain, or performing a public (Federal, State, or local) transaction or contract under a public transaction; violation of Federal or State antitrust statutes or commission of embezzlement, theft, forgery, bribery, falsification or destruction of records, making false statements, or receiving stolen property.
- c. That the Bidder and its principals are not presently indicted for or otherwise criminally or civilly charged by a governmental entity (Federal, State, or local) with commission of any of the offenses enumerated in paragraph b of this certification.
- d. That the Bidder and its principals have not within a 3-year period preceding this bid had one or more public transactions (Federal, State, or local) terminated for breach or default of a timber or forest product contract.

Bidders that cannot certify this requirement, in whole or in part, shall submit an explanation with their bid.

Scott Bowen
Director

TIMBER SALE INFORMATION

D.I. Deep Abyss (45-011-25)

T41N, R06E, SEC. 10; T41N, R06E, SEC. 11; T41N, R06E, SEC. 9.
Chippewa County (Advertised Price \$20,011.25)

SALE NOTE: Seasonal restriction from Oct 1- March 31. Rocky ground. Snowmobile trail is used for access.

A recreation site such as a trail, pathway, or campground is within the sale area or the vicinity. Certain restrictions/specifications may be applicable including time restrictions.

A timber sale contract for this lump sum, sealed bid timber sale will be awarded to the responsible bidder offering the highest sealed bid price. All units of volume listed below were estimated using the Inventory Manager computer program and the new Michigan taper model. Bids must be at or above the following advertised price for each product and species:

<u>PRODUCTS & SPECIES</u>	<u>ESTIMATED UNITS*</u>		<u>ADVERTISED PRICE</u>
Sawtimber			
Sugar Maple	5.4	MBF	\$ 139.00 / MBF
Pulpwood			
Balsam Fir	131	Cords	\$ 6.60 / Cord
Balsam Poplar	20	Cords	\$ 7.10 / Cord
Mixed Aspen	320	Cords	\$ 8.50 / Cord
Mixed Hardwood	349	Cords	\$ 7.50 / Cord
Mixed Spruce	37	Cords	\$ 6.60 / Cord
N. White Cedar	99	Cords	\$ 2.55 / Cord
Paper Birch	38	Cords	\$ 5.80 / Cord
Red Pine	139	Cords	\$ 55.50 / Cord
White Pine	345	Cords	\$ 13.00 / Cord

* The total volume is statistically estimated within plus (+) or minus (-) 15.15 percent. There are an estimated 1,491 cords on this timber sale, plus or minus 226 cords at the 95% confidence level. The estimated units are final and not subject to adjustment. Prospective bidders are urged to examine this timber and to make their own estimates of quantity and quality.

BOND AND PAYMENT SCHEDULE:

1. A bond in the amount of \$1,601.00 to insure faithful performance of the conditions of the contract will be deposited by the successful bidder within 21 days of the sale award.
2. Cutting in any sale or unit without the required advance payment would be considered a trespass.
3. Total payment must be paid in advance or according to the following schedule :
 - (a) Ten percent (10%) of the sale value must be paid within 21 days of the sale award.
 - (b) The 10% down payment will be credited towards the first unit cut.
 - (c) Payment for each of the following units must be made before cutting begins in that unit:

PAYMENT UNIT NUMBER	PERCENT OF TOTAL SALE VALUE
01	69.5%
02	21.2%
03	9.3%

4. If no cutting takes place, the 10% down payment will not be refunded.

5. Operations on the contract issued will terminate on 06/30/2029.

SALE STATISTICS

Volumes were calculated in cubic feet using the Michigan taper model. Cubic foot volume includes all wood inside bark for the product indicated. For display purposes, cubic feet were converted to cords and MBF using a simple conversion factor, e.g. 79 cubic feet per cord and 185 cubic feet per MBF. The cubic foot volumes are precise; the cords and MBF volumes are not. Cubic foot volume cannot be directly converted to cords or boards with precision.

SALE VOLUMES

The total estimated sale volume may not equal the sum of the species/products due to the nature of statistical calculations associated with double sampling methodology.

VOLUME			STATISTICAL RANGE IN CORDS	
TOTAL CUBIC FEET	TOTAL CORDS	PERCENT ERROR	MINIMUM	MAXIMUM
117,753	1,491	15.15%	1,265	1,716

VDU VOLUMES

A VDU is a Volume Determination Unit. Volumes and their associated statistics are calculated at the VDU level and summarized to the sale level. There is often a one to one relationship between a VDU and a Payment Unit, but not always, depending on the cruise design. Refer to the VDU TO PAYMENT UNIT table.

	VOLUME			RANGE IN CORDS	
VDU	TOTAL CUBIC FEET	TOTAL CORDS	PERCENT ERROR	MINIMUM	MAXIMUM
33	19,230	243	34.46%	160	327
60	39,776	503	28.05%	362	645
96	58,747	744	21.28%	585	902
TOTAL:	117,753	1,491		1,107	1,874

VDU TO PAYMENT UNIT

When a VDU is associated with more than one Payment Unit (PU), the VDU volumes are assigned to the PU based on acres of the VDU within the PU.

VDU	VDU ACRES	PU	PU ACRES
TOTAL:			

DESCRIPTION OF TIMBER BY PAYMENT UNIT (PU)

PU	MARKET GROUP	PRODUCT	QUANTITY	UNIT	ACRES	ADVERTISE PRICE
1	Balsam Fir Mixed Aspen <i>B. T. Aspen</i> <i>Quaking Aspen</i> Mixed Hardwood <i>Red Maple</i> <i>Sugar Maple</i> N. White Cedar Paper Birch Red Pine White Pine	Pulpwood	55 95 6 89 32 6 26 44 34 139 345	Cords Cords <i>Cords</i> <i>Cords</i> Cords <i>Cords</i> <i>Cords</i> Cords Cords Cords Cords	32.7	\$13,919.40
2	Sugar Maple Balsam Fir Balsam Poplar Mixed Aspen <i>B. T. Aspen</i> <i>Quaking Aspen</i> Mixed Hardwood <i>Ironwood</i> <i>Red Maple</i> <i>Sugar Maple</i> Mixed Spruce <i>White Spruce</i> N. White Cedar Paper Birch	Sawtimber Pulpwood	5.4 43 20 127 44 83 222 3 10 209 26 26 48 4	MBF Cords Cords Cords <i>Cords</i> <i>Cords</i> Cords <i>Cords</i> <i>Cords</i> <i>Cords</i> Cords <i>Cords</i> Cords Cords	34.1	\$4,238.10
3	Balsam Fir Mixed Aspen <i>Quaking Aspen</i> Mixed Hardwood <i>Red Maple</i> <i>Sugar Maple</i> Mixed Spruce <i>White Spruce</i> N. White Cedar	Pulpwood	33 98 98 95 13 82 11 11 7	Cords Cords <i>Cords</i> Cords <i>Cords</i> <i>Cords</i> Cords <i>Cords</i> Cords	15.8	\$1,853.75
TOTAL:			5.4	MBF		
TOTAL:			1,478	Cords		

Sale Specific Conditions & Requirements

Sale Name: D.I. Deep Abyss

Sale Number: 45-011-25 Seq#: 1

1 - Sale Area

1.2 - Boundaries

1.2.1 - Painted Boundaries (9/19)

The sale boundary and Payment Unit boundaries are marked and identified by blue, red and yellow paint. Exterior sale boundary lines against private property are marked with blue paint. Exterior sale boundary lines against state are marked with red paint. Interior Payment Unit boundaries are marked with yellow paint. Retention patches are marked with red paint; no harvesting activities may occur within these areas. The painted boundary line trees are not Included Timber and are to be protected unless marked with orange paint. Yellow painted trees designating an interior Payment Unit boundary are only to be cut when all surrounding Payment Units have been paid.

2 - Timber Specifications

2.1 - Included Timber

2.1.1 - Clearcut Unit(s) with Unmerchantable Trees (6/14)

Within Payment Unit(s) 2-3, cut all trees that are two (2) inches or more at DBH, except do not cut oak, pine, and hemlock. Additionally, special care should be taken not to damage or cut white pine saplings (see spec 3.4.1).

2.1.7 - Leave Tree Marked Unit(s) (6/14)

Within Payment Unit(s) 1, cut all trees that are two (2) inches or more at DBH, except do not cut oak, hemlock, yellow birch, or trees marked with green paint above and below stump height.

3 - Payments

3.3 - Pre-measured Sales

3.3.4 - Dividing Payment Units (7/14)

Payment Unit(s) 1-3 may be divided at the request of the Purchaser and upon approval of the Unit Manager. Dividing Payment Units is a contract modification which requires a Timber Sale Contract Amendment. There will be only one division per Payment Unit.

3.4 - Damaged Timber

3.4.1 - Damaged Timber (12/24)

General Condition and Requirement 3.4 Damaged Timber, defines liquidated damages for undesignated live merchantable trees which are cut or injured. In addition, extreme care should be taken to avoid damage to tree seedlings and saplings.

Within the Sale Area, if more than 10% of the tree seedlings or saplings (1/4" to 4.5" DBH) within a specified portion of the Sale Area are damaged, liquidated damages will be assessed at \$500 per acre for all acreage within that specified portion of the Sale Area that was damaged.

No damage is acceptable to undesignated live merchantable trees. Within the Sale Area, if more than 5% of trees (> 4.5" DBH) within a specified area of the sale are damaged, liquidated damages will be assessed for all trees damaged. Rates will be in accordance with General Condition and Requirement 3.4 Damaged Timber.

4 - Transportation

4.1 - Construction

4.1.3 - Slash and Earthen Piles (8/04)

Piles or windrows of earth along roads and landings that have been widened or constructed shall be leveled. Slash from road maintenance or construction, including stumps, shall be dispersed throughout the sale.

4.1.6 - Road Construction (4/24)

Construction of new roads or improvements of existing roads shall be done in such a way as to minimize the environmental

and visual impacts. Merchantable trees shall be cut and utilized unless otherwise directed. Non-merchantable trees shall be severed and laid flat on the ground. Slash shall be scattered, not left in windrows, and kept a minimum of 10 feet back from the road edge. Stumps shall be set upright, not left on edge, and be moved at least 10 feet away from the road edge. Disturbed soil shall be feathered into the woods and not left in berms or windrows.

4.1.7 - Road Closure (10/11)

All new roads built into the sale must be blocked to vehicle traffic upon completion of the sale. Overgrown roads that are reopened shall be considered new roads. In general, this will require constructing double earthen berms at strategic locations. Stumps and brush must be placed along the remainder of the trail. These roads must be rendered impassable to cars and trucks. All stumps from road building and landing construction must be reserved to block any newly constructed roads upon completion of the sale. These stumps must be scattered along the road system to prohibit vehicular movement. Temporary berms may be required if no sale activity occurs for 30 or more consecutive days. Contact the Sale Administrator for specific details of design and placement.

4.2 - Maintenance

4.2.1 - Hauling Restriction (12/08)

Hauling may be restricted on forest roads by the Unit Manager or his/her representative. The restriction may occur during wet weather conditions.

4.2.4 - Grading (10/16)

For completion of the sale, state forest roads must be graded. In general, this will require a road grader or bulldozer to shape up the roads after forest products have been hauled off site. This includes cleaning of drainage areas, grading, crowning and filling with gravel, if necessary. The grading equipment to be used must be approved by the Unit Manager or his/her representative.

4.2.5 - Two Wheel Drive Condition (2/04)

All existing trail roads on and adjacent to the Sale Area must be passable by two-wheel drive traffic for the duration of the sale.

4.4 - Access

4.4.3 - Access gate (12/08)

The access gate must be locked at all times. This is to prevent someone other than the Purchaser from going through the gate and being locked in.

5 - Operations

5.2 - Conduct of Operations

5.2.2 - Hazard Trees/Snags

5.2.2.1 - Den Trees (10/16)

Obvious hollow and/or den trees shall be protected and left standing unless they are a safety hazard.

5.2.3 - Operating Restrictions

5.2.3.1 - Operating Restrictions (9/11)

Within Payment Unit(s) 1-3, unless changed by written agreement, cutting, skidding, and hauling are limited to the period of October 1 to March 31. This restriction is because the deer yard.

5.2.32 - Decking/Landing Restoration (9/13)

All decking and landing areas must have the surface area restored to a condition equal to or better than before. This is to ensure the proper regeneration of the stand. Wood debris, chips and "cookies" from trimmings must be removed or scattered away from landing and loading areas and may not be windrowed on the edge.

5.2.38 - No Decking Against Live Trees (2/04)

Cut products may not be decked against unmarked or designated leave trees.

5.2.41 - Snowmobile Trail Protection (9/11)

The snowmobile trail is shown on the Timber Sale Map. Do not cut or damage posts with orange trail markers or traffic control signs. If the trail is used, it must be maintained and restored to a condition equal to or better than before the sale. The

road maintenance/restoration must be done prior to December 1. If the trail is used for hauling, it must be graded to the satisfaction of the Unit Manager or his/her representative prior to December 1. If the trail road is to be used for hauling during the snowmobile season, then a snow-covered base must be left on the trail. The snowmobile trail may only be crossed at right angles. Maintain a 20-foot-wide slash, debris, and rut free zone daily using the snowmobile trail as the centerline. No decking of forest products will be permitted along the snowmobile trail. All stumps within 5 feet of the snowmobile trail must be cut at ground level.

6 - Safety and Fire Prevention

6.2 - Signing

6.2.1 - Road Posting (10/20)

The Purchaser is responsible for posting and maintaining caution signs on Canoe Bay Rd prior to beginning operations. The road must be posted at appropriate distances from the Sale Area to warn of logging activity and truck traffic. Signs must be removed when harvest operations are suspended or completed. The Purchaser will provide these signs.

6.2.2 - Snowmobile Trail Posting (10/20)

The Purchaser is responsible for posting and maintaining caution signs on the snowmobile trail prior to beginning operations during the snowmobile season (approximately December 1 to March 31). The trail must be posted at appropriate distances from the Sale Area to warn of logging activity and truck traffic. Signs must be removed when harvest operations are suspended or completed. The Purchaser will provide these signs.

7 - Other Conditions

7.5 - Loss

7.5.1 - Deteriorating Timber (7/09)

The Sale Area has received damage from spruce budworm. The Purchaser should harvest the wood as soon as possible. The Department of Natural Resources is held free of responsibility of any further damage or deterioration due to delay in harvesting.

**TIMBER SALE MAP**

This information provided by authority of Part 525, 1994 PA 451, as amended.

Sale Number

45-011-25

Date

08/29/2025

Forest Management Unit

County

Mapped By: Fanelli

Scale

Page

Of

Sault Ste Marie Mgt Unit

Chippewa

Cruised By: Fanelli

1:15,840**1****1**Township
41NRange
06ESection(s) and
Subdivision(s) Sec. 10 NW; Sec. 11 N1/2SW; Sec. 9 E1/2NE;**Cover Type**

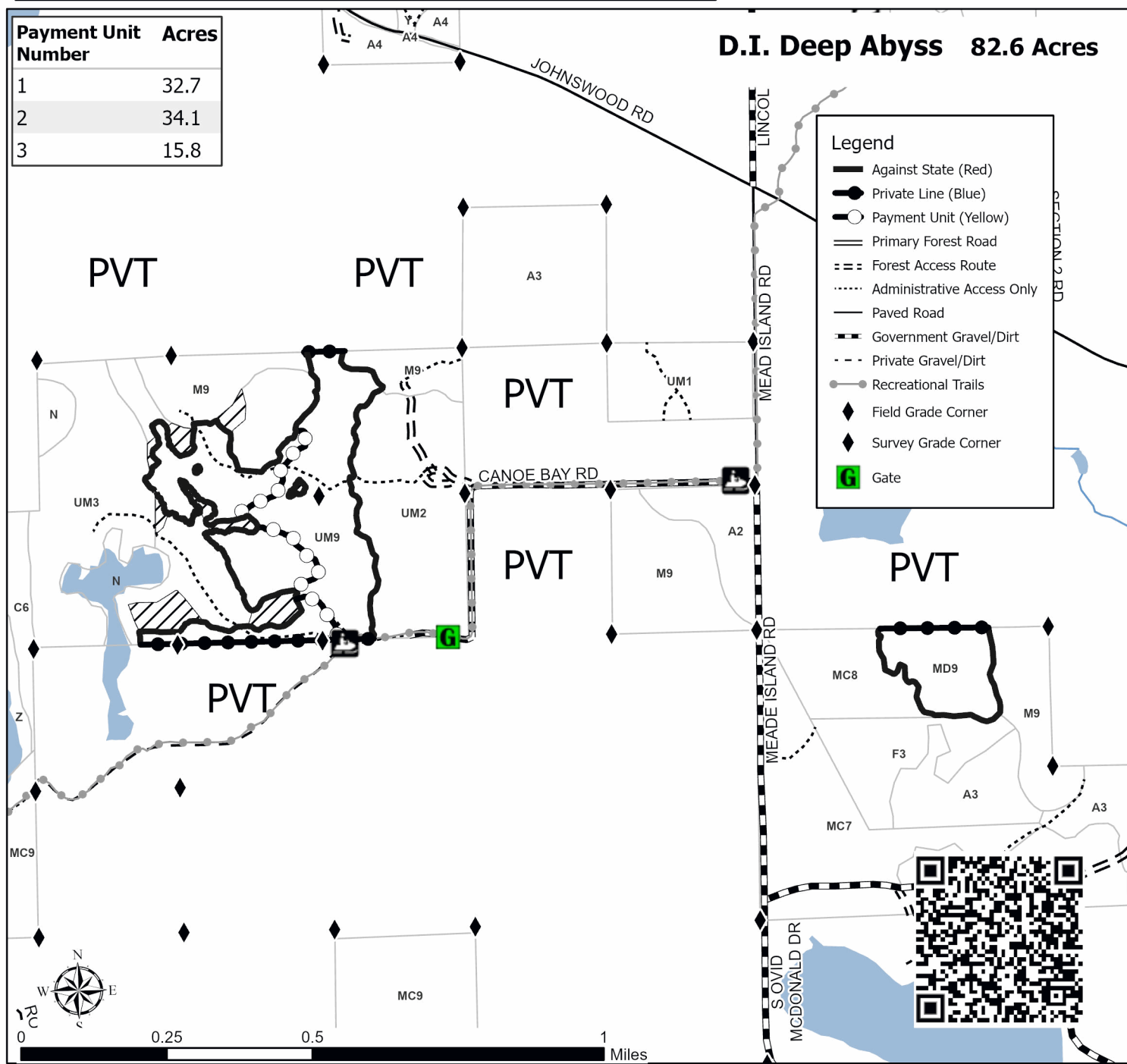
A = Aspen	J = Jack Pine	O = Oak	U = Upland Brush
B = Paper Birch	K = Rock	P = Lowland Poplar	UM = Upland Mix Forest
C = Cedar	L = Lowland Brush	Q = Mixed Swamp Conifer	V = Bog or Marsh
D = Treed Bog	LM = Lowland Mix Forest	R = Red Pine	W = White Pine
E = Swamp Hardwoods	M = Maple, Beech, Birch	S = Black Spruce	X = Non Stocked
F = Spruce/Fir	MC = Mixed Conifer	T = Tamarack	Y = Sand
G = Grass	MD = Mixed Deciduous		Z = Water
H = Hemlock	N = Marsh		

Density

0 = Non Stocked	5 = Pole Timber Medium
1 = Seedling Sapling Poor	6 = Pole Timber Well
2 = Seedling Sapling Medium	7 = Saw Timber Poor
3 = Seedling Sapling Well	8 = Saw Timber Medium
4 = Pole Timber Poor	9 = Saw Timber Well

**Payment Unit
Number****Acres**

1	32.7
2	34.1
3	15.8

D.I. Deep Abyss 82.6 Acres

TIMBER SALE INFORMATION

DI Distant Cuts (45-012-25)

T41N, R06E, SEC. 17; T41N, R06E, SEC. 5; T41N, R06E, SEC. 7; T41N, R06E, SEC. 8; T41N, R06E, SEC. 9.
Chippewa County (Advertised Price \$66,437.30)

SALE NOTE: This sale will require access from private lands for Payment Units 1-5.

Payment Units 10 & 11 will be amended for a small (18.56 cord) reduction in cedar volume due to a need for strategic reserve trees.

A recreation site such as a trail, pathway, or campground is within the sale area or the vicinity. Certain restrictions/specifications may be applicable including time restrictions. Access may be through private land.

A timber sale contract for this lump sum, sealed bid timber sale will be awarded to the responsible bidder offering the highest sealed bid price. All units of volume listed below were estimated using the Inventory Manager computer program and the new Michigan taper model. Bids must be at or above the following advertised price for each product and species:

<u>PRODUCTS & SPECIES</u>	<u>ESTIMATED UNITS*</u>	<u>ADVERTISED PRICE</u>
Pulpwood		
Balsam Fir	721 Cords	\$ 6.60 / Cord
Balsam Poplar	72 Cords	\$ 7.10 / Cord
Mixed Aspen	2,761 Cords	\$ 8.50 / Cord
Mixed Hardwood	46 Cords	\$ 7.50 / Cord
N. White Cedar	1,320 Cords	\$ 2.55 / Cord
Paper Birch	375 Cords	\$ 5.80 / Cord
Red Pine	494 Cords	\$ 55.50 / Cord
Tamarack	28 Cords	\$ 2.90 / Cord
White Pine	140 Cords	\$ 13.00 / Cord
White Spruce	378 Cords	\$ 6.60 / Cord

* The total volume is statistically estimated within plus (+) or minus (-) 7.76 percent. There are an estimated 6,332 cords on this timber sale, plus or minus 492 cords at the 95% confidence level. The estimated units are final and not subject to adjustment. Prospective bidders are urged to examine this timber and to make their own estimates of quantity and quality.

BOND AND PAYMENT SCHEDULE:

1. A bond in the amount of \$5,315.00 to insure faithful performance of the conditions of the contract will be deposited by the successful bidder within 21 days of the sale award.
2. Cutting in any sale or unit without the required advance payment would be considered a trespass.
3. Total payment must be paid in advance or according to the following schedule:
 - (a) Ten percent (10%) of the sale value must be paid within 21 days of the sale award.
 - (b) The 10% down payment will be credited towards the first unit cut.
 - (c) Payment for each of the following units must be made before cutting begins in that unit:

<u>PAYMENT UNIT NUMBER</u>	<u>PERCENT OF TOTAL SALE VALUE</u>
01	10.2%
02	8.7%
03	11.5%
04	4.7%
05	28.1%
06	5.0%
07	6.7%
08	7.2%
09	3.9%
10	8.9%
11	2.9%
12	2.2%

4. If no cutting takes place, the 10% down payment will not be refunded.
5. Operations on the contract issued will terminate on 06/30/2030.

SALE STATISTICS

Volumes were calculated in cubic feet using the Michigan taper model. Cubic foot volume includes all wood inside bark for the product indicated. For display purposes, cubic feet were converted to cords and MBF using a simple conversion factor, e.g. 79 cubic feet per cord and 185 cubic feet per MBF. The cubic foot volumes are precise; the cords and MBF volumes are not. Cubic foot volume cannot be directly converted to cords or boards with precision.

SALE VOLUMES

The total estimated sale volume may not equal the sum of the species/products due to the nature of statistical calculations associated with double sampling methodology.

VOLUME			STATISTICAL RANGE IN CORDS	
TOTAL CUBIC FEET	TOTAL CORDS	PERCENT ERROR	MINIMUM	MAXIMUM
500,219	6,332	7.76%	5,840	6,824

VDU VOLUMES

A VDU is a Volume Determination Unit. Volumes and their associated statistics are calculated at the VDU level and summarized to the sale level. There is often a one to one relationship between a VDU and a Payment Unit, but not always, depending on the cruise design. Refer to the VDU TO PAYMENT UNIT table.

	VOLUME			RANGE IN CORDS	
VDU	TOTAL CUBIC FEET	TOTAL CORDS	PERCENT ERROR	MINIMUM	MAXIMUM
27	52,888	669	17.50%	552	787
31	45,787	580	30.53%	403	757
36	142,802	1,808	13.06%	1,571	2,044
39	14,341	182	46.01%	98	265
46	141,348	1,789	16.60%	1,492	2,086
58	103,054	1,304	17.07%	1,082	1,527
TOTAL:	500,219	6,332		5,198	7,465

VDU TO PAYMENT UNIT

When a VDU is associated with more than one Payment Unit (PU), the VDU volumes are assigned to the PU based on acres of the VDU within the PU.

VDU	VDU ACRES	PU	PU ACRES
TOTAL:			

DESCRIPTION OF TIMBER BY PAYMENT UNIT (PU)

PU	MARKET GROUP	PRODUCT	QUANTITY	UNIT	ACRES	ADVERTISE PRICE
1	Balsam Fir Mixed Aspen <i>B. T. Aspen</i> <i>Quaking Aspen</i> Mixed Hardwood <i>Red Maple</i> Paper Birch Red Pine Tamarack White Spruce	Pulpwood	103 236 1 235 1 1 56 61 7 58	Cords Cords Cords Cords Cords Cords Cords Cords Cords Cords	51.6	\$6,806.70
2	Balsam Fir Mixed Aspen <i>B. T. Aspen</i> <i>Quaking Aspen</i> Mixed Hardwood <i>Red Maple</i> Paper Birch Red Pine Tamarack White Spruce	Pulpwood	87 199 1 198 1 1 47 52 6 49	Cords Cords Cords Cords Cords Cords Cords Cords Cords Cords	43.5	\$5,772.60
3	Balsam Fir Mixed Aspen <i>B. T. Aspen</i> <i>Quaking Aspen</i> Mixed Hardwood <i>Red Maple</i> Paper Birch Red Pine Tamarack White Spruce	Pulpwood	117 265 2 263 2 2 63 68 9 65	Cords Cords Cords Cords Cords Cords Cords Cords Cords Cords	57.8	\$7,634.20
4	Balsam Fir Mixed Aspen <i>B. T. Aspen</i> <i>Quaking Aspen</i> Mixed Hardwood <i>Red Maple</i> Paper Birch Red Pine Tamarack White Spruce	Pulpwood	47 108 1 107 1 1 25 28 3 26	Cords Cords Cords Cords Cords Cords Cords Cords Cords Cords	23.6	\$3,115.00
5	Balsam Fir Mixed Aspen <i>B. T. Aspen</i> <i>Quaking Aspen</i> Paper Birch Red Pine White Pine White Spruce	Pulpwood	34 68 3 65 43 285 140 9	Cords Cords Cords Cords Cords Cords Cords Cords	27.0	\$18,748.70
6	Balsam Fir Mixed Aspen <i>B. T. Aspen</i> <i>Quaking Aspen</i> N. White Cedar Paper Birch Tamarack White Spruce	Pulpwood	41 208 4 204 366 14 3 36	Cords Cords Cords Cords Cords Cords Cords Cords	23.3	\$3,299.40

DESCRIPTION OF TIMBER BY PAYMENT UNIT (PU), CON'T

PU	MARKET GROUP	PRODUCT	QUANTITY	UNIT	ACRES	ADVERTISE PRICE
7	Balsam Fir	Pulpwood	69	Cords	23.3	\$4,446.05
	Balsam Poplar		21	Cords		
	Mixed Aspen		357	Cords		
	B. T. Aspen		3	Cords		
	Quaking Aspen		354	Cords		
	Mixed Hardwood		15	Cords		
	Striped Maple		1	Cords		
	Sugar Maple		14	Cords		
	N. White Cedar		181	Cords		
	Paper Birch		14	Cords		
	White Spruce		23	Cords		
8	Balsam Fir	Pulpwood	74	Cords	25.0	\$4,772.90
	Balsam Poplar		23	Cords		
	Mixed Aspen		382	Cords		
	B. T. Aspen		3	Cords		
	Quaking Aspen		379	Cords		
	Mixed Hardwood		17	Cords		
	Striped Maple		1	Cords		
	Sugar Maple		16	Cords		
	N. White Cedar		194	Cords		
	Paper Birch		15	Cords		
	White Spruce		25	Cords		
9	Balsam Fir	Pulpwood	40	Cords	13.7	\$2,613.85
	Balsam Poplar		13	Cords		
	Mixed Aspen		210	Cords		
	B. T. Aspen		2	Cords		
	Quaking Aspen		208	Cords		
	Mixed Hardwood		9	Cords		
	Striped Maple		1	Cords		
	Sugar Maple		8	Cords		
	N. White Cedar		107	Cords		
	Paper Birch		8	Cords		
	White Spruce		13	Cords		
10	Balsam Fir	Pulpwood	70	Cords	43.4	\$5,885.00
	Balsam Poplar		11	Cords		
	Mixed Aspen		451	Cords		
	B. T. Aspen		3	Cords		
	Quaking Aspen		448	Cords		
	N. White Cedar		356	Cords		
	Paper Birch		54	Cords		
	White Spruce		44	Cords		
11	Balsam Fir	Pulpwood	23	Cords	14.1	\$1,908.00
	Balsam Poplar		4	Cords		
	Mixed Aspen		146	Cords		
	B. T. Aspen		1	Cords		
	Quaking Aspen		145	Cords		
	N. White Cedar		116	Cords		
	Paper Birch		17	Cords		
	White Spruce		14	Cords		
12	Balsam Fir	Pulpwood	16	Cords	6.3	\$1,434.90
	Mixed Aspen		131	Cords		
	Quaking Aspen		131	Cords		
	Paper Birch		19	Cords		
	White Spruce		16	Cords		
TOTAL:			6,335	Cords		

Sale Specific Conditions & Requirements

Sale Name: DI Distant Cuts

Sale Number: 45-012-25 Seq#: 1

1 - Sale Area

1.2 - Boundaries

1.2.1 - Painted Boundaries (9/19)

The sale boundary and Payment Unit boundaries are marked and identified by blue, red and yellow paint or are unmarked and identified by a road. Exterior sale boundary lines against private property are marked with blue paint. Exterior sale boundary lines against state are marked with red paint, with the exception of the western boundaries of Payment Units 7 and 8. Interior Payment Unit boundaries are marked with yellow paint, with the exception of the boundary between Payment Units 1, 2 and 3. Retention patches are marked with red paint; no harvesting activities may occur within these areas. The painted boundary line trees are not Included Timber and are to be protected. Yellow painted trees designating an interior Payment Unit boundary are only to be cut when all surrounding Payment Units have been paid.

2 - Timber Specifications

2.1 - Included Timber

2.1.1 - Clearcut Unit(s) with Unmerchantable Trees (6/14)

Within Payment Unit(s) 1-4, 6-9, and 12, cut all trees that are two (2) inches or more at DBH, except do not cut oak, hemlock, or yellow birch. In addition, the following specifications apply:

- Within Payment Units 1-4, do not cut red pine over 18" at DBH, or any cedar or white pine.

- Within Payment Units 6-9, do not cut any pine.

- Within Payment Unit 12, do not cut any pine or cedar.

2.1.7 - Leave Tree Marked Unit(s) (6/14)

Within Payment Unit(s) 5, 10 and 11, cut all trees that are two (2) inches or more at DBH, except do not cut any tree marked with green paint above and below stump height. In addition, the following specifications apply:

- Within Payment Unit 5 do not cut pine less than 4" at DBH, or any cedar, oak, hemlock, or yellow birch.

- Within Payment Units 10 and 11, do not cut oak, hemlock, yellow birch, or any pine.

2.1.9 - Harvest Exception (12/24)

Do not cut any cedar trees in Payment Units 1-5 & 12 other than those that are necessary to remove in order to operate within the Sale Area. Every effort must be made to preserve the existing cedar and to leave an intact stand upon sale completion. All cut cedar shall be piled separately by product and scaled in the woods, unless other scaling arrangements are agreed to by the Unit Manager or his/her representative. Stumpage price for cedar shall be \$20.00 per cord.

2.2 - Utilization

2.2.3 - Stump Heights (12/24)

Stump heights within the Sale Area shall not exceed 24 inches for trees greater than 10 inches at DBH or multi-stemmed trees, and 12 inches for trees smaller than 10 inches at DBH.

4 - Transportation

4.1 - Construction

4.1.3 - Slash and Earthen Piles (8/04)

Piles or windrows of earth along roads and landings that have been widened or constructed shall be leveled. Slash from road maintenance or construction, including stumps, shall be dispersed throughout the sale.

4.1.6 - Road Construction (4/24)

Construction of new roads or improvements of existing roads shall be done in such a way as to minimize the environmental

and visual impacts. Merchantable trees shall be cut and utilized unless otherwise directed. Non-merchantable trees shall be severed and laid flat on the ground. Slash shall be scattered, not left in windrows, and kept a minimum of 10 feet back from the road edge. Stumps shall be set upright, not left on edge, and be moved at least 10 feet away from the road edge. Disturbed soil shall be feathered into the woods and not left in berms or windrows.

4.1.7 - Road Closure (10/11)

All new roads built into the sale must be blocked to vehicle traffic upon completion of the sale. Overgrown roads that are reopened shall be considered new roads. In general, this will require constructing double earthen berms at strategic locations. Stumps and brush must be placed along the remainder of the trail. These roads must be rendered impassable to cars and trucks. Contact the Sale Administrator for specific details of design and placement.

4.4 - Access

4.4.1 - Private property access (3/11)

Permission for access across private land is the responsibility of the Purchaser. Should the Purchaser desire to cross private land, a copy of the written permission from the private landowner may be required by the DNR.

5 - Operations

5.2 - Conduct of Operations

5.2.1 - Slash

5.2.1.8 - Slash Height (12/08)

No slash or tree tops may exceed 24 inches in height.

5.2.2 - Hazard Trees/Snags

5.2.2.1 - Den Trees (10/16)

Obvious hollow and/or den trees shall be protected and left standing unless they are a safety hazard.

5.2.3 - Operating Restrictions

5.2.3.1 - Operating Restrictions (9/11)

Within Payment Unit(s) 1-5, unless changed by written agreement, cutting, skidding, and hauling are limited to the period of December 1 to March 31. This restriction is to provide a food resource to wintering deer.

5.2.4 - Dead and Down Creation

5.2.4.6 - Dead and Down Creation, Other (9/09)

To create hare habitat, along the west edge of Payment Unit 1, and the east edge of Payment Units 7 & 8, leave slash in piles measuring 6' tall and 12' in diameter along the edge of the Payment Units. Leave one pile every 200 feet.

5.2.22 - Operating Caution

5.2.22.1 - Operating Caution (6/11)

It is recommended, but not required, that within Payment Unit(s) 6-12, cutting, skidding, and hauling occur during the period between December 1 and March 31. The reason for the recommendation is to provide food resources to wintering deer.

5.2.32 - Decking/Landing Restoration (9/13)

All decking and landing areas must have the surface area restored to a condition equal to or better than before. This is to ensure the proper regeneration of the stand. Wood debris, chips and "cookies" from trimmings must be removed or scattered away from landing and loading areas and may not be windrowed on the edge.

5.2.38 - No Decking Against Live Trees (2/04)

Cut products may not be decked against unmarked or designated leave trees.

5.2.41 - Snowmobile Trail Protection (9/11)

S. Warners Cove Rd. is a designated snowmobile trail and is shown on the Timber Sale Map. Do not cut or damage posts with orange trail markers or traffic control signs. If the trail is used, it must be maintained and restored to a condition equal to or better than before the sale. The road maintenance/restoration must be done prior to December 1. If the trail road is to be

used for hauling during the snowmobile season, then a snow-covered base must be left on the trail. Maintain a 20-foot-wide slash, debris, and rut free zone daily using the snowmobile trail as the centerline. No decking of forest products will be permitted along the snowmobile trail. All stumps within 5 feet of the snowmobile trail must be cut at ground level.

5.8 - Protection of Endangered Species

5.8.5 - Protection of Raptor Nests (3/13)

All trees with raptor nests will be protected if found during harvesting operations. Notification will be made to the Unit Manager or his/her representative who will notify the Wildlife Biologist so an onsite evaluation and recommendation can be made, if necessary.

6 - Safety and Fire Prevention

6.2 - Signing

6.2.1 - Road Posting (10/20)

The Purchaser is responsible for posting and maintaining caution signs on S. Warners Cove Rd. prior to beginning operations. The road must be posted at appropriate distances from the Sale Area to warn of logging activity and truck traffic. Signs must be removed when harvest operations are suspended or completed. The Purchaser will provide these signs.

TIMBER SALE MAP

This information provided by authority of Part 525, 1994 PA 451, as amended.

Sale Number

45-012-25

Date

11/07/2025

Forest Management Unit

County

Mapped By: Louis Radecki

Scale

Page

Of

Sault Ste Marie Mgt Unit

Chippewa

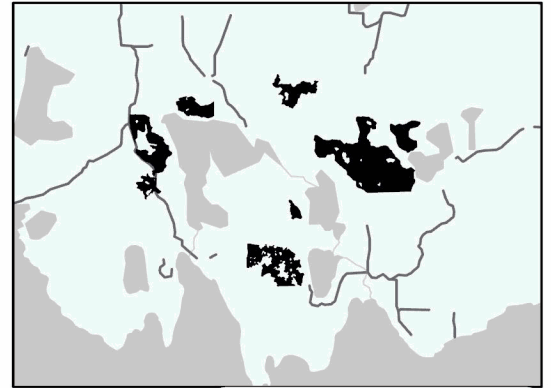
Cruised By: Louis Radecki

1:31,680**1****3**Township
41NRange
06ESection(s) and Subdivision(s) N1/2NW,SENW,NWNE,S1/2NE; Sec. 8 N1/2SE,SESE; Sec. 9 S1/2NW,SW;
Sec. 17 NENW,S1/2NW,N1/2SW; Sec. 5 SESW; Sec. 7 NENW,S1/2NW,W1/2NE,SW; Sec. 8**Cover Type**

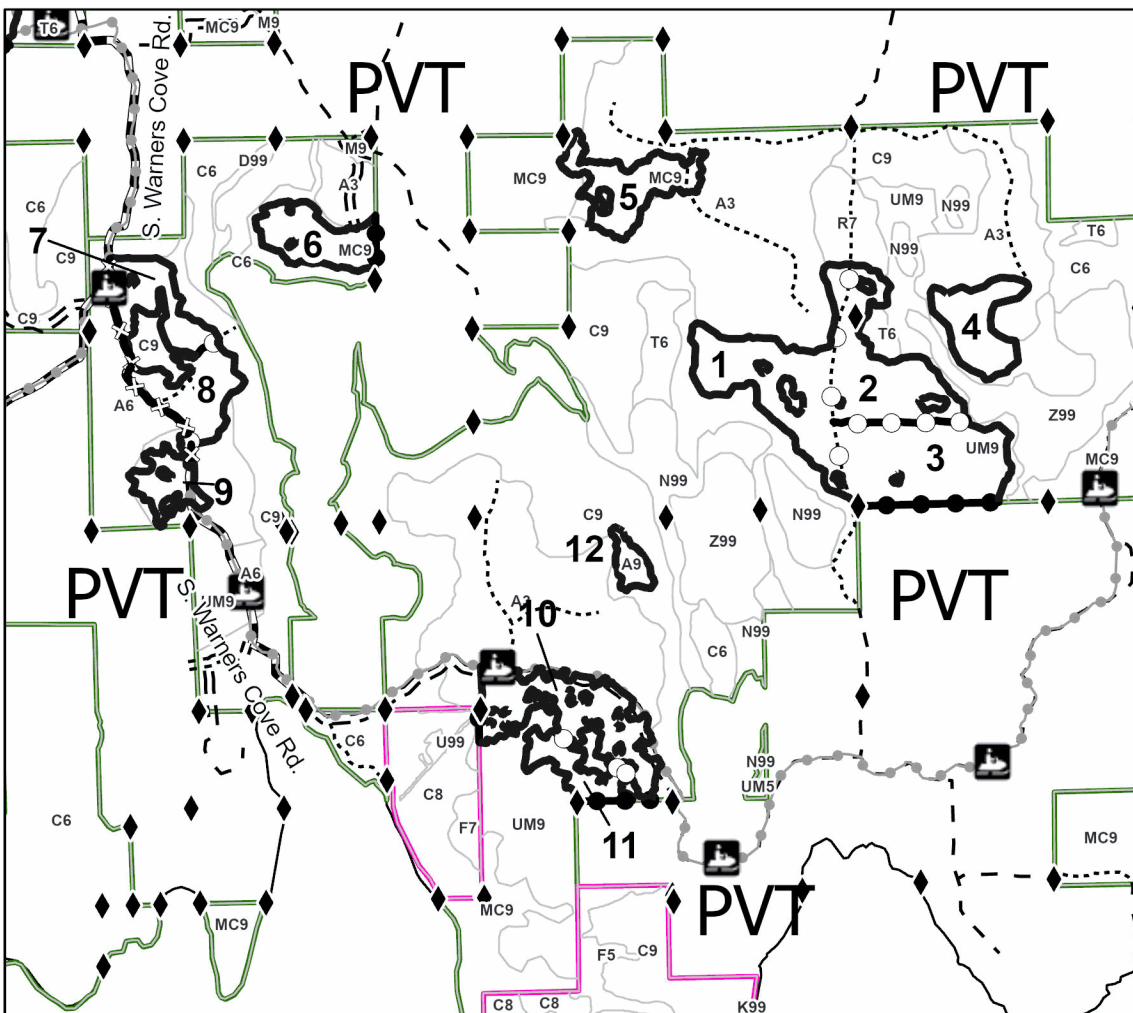
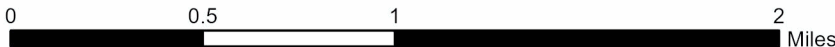
A = Aspen	J = Jack Pine	O = Oak	U = Upland Brush
B = Paper Birch	K = Rock	P = Lowland Poplar	UM = Upland Mix Forest
C = Cedar	L = Lowland Brush	Q = Mixed Swamp Conifer	V = Bog or Marsh
D = Treed Bog	LM = Lowland Mix Forest	R = Red Pine	W = White Pine
E = Swamp Hardwoods	M = Maple, Beech, Birch	S = Black Spruce	X = Non Stocked
F = Spruce/Fir	MC = Mixed Conifer	T = Tamarack	Y = Sand
G = Grass	MD = Mixed Deciduous	Z = Water	
H = Hemlock	N = Marsh		

Density

0 = Non Stocked	5 = Pole Timber Medium
1 = Seedling Sapling Poor	6 = Pole Timber Well
2 = Seedling Sapling Medium	7 = Saw Timber Poor
3 = Seedling Sapling Well	8 = Saw Timber Medium
4 = Pole Timber Poor	9 = Saw Timber Well

Locator Map 1:100,000**DI Distant
Cuts****352.6 Acres**

Payment Unit Number	Acres	Payment Unit Number	Acres
1	51.6	7	23.3
2	43.5	8	25
3	57.8	9	13.7
4	23.6	10	43.4
5	27	11	14.1
6	23.3	12	6.3

**Legend**

- Against State (Red)
- X— Against State (Unpainted)
- Private Line (Blue)
- Payment Unit (Yellow)
- Payment Unit (Road)
- Forest Access Route
- Administrative Access Only
- Government Gravel/Dirt
- Private Gravel/Dirt
- Recreational Trails
- ◆ Field Grade Corner
- ◆ Survey Grade Corner



TIMBER SALE MAP

This information provided by authority of Part 525, 1994 PA 451, as amended.

Sale Number

45-012-25

Date

09/18/2025

Forest Management Unit		County	Mapped By:	Scale	Page	Of
Sault Ste Marie Mgt Unit		Chippewa	Cruised By:	1:20,000	2	3
Township	Range	Section(s) and N1/2NW,SENW,NWNE,S1/2NE; Sec. 8 N1/2SE,SESE; Sec. 9 S1/2NW,SW; Subdivision(s) Sec. 17 NENW,S1/2NW,N1/2SW; Sec. 5 SESW; Sec. 7 NENW,S1/2NW,W1/2NE,SW; Sec. 8				
41N	06E					

Cover Type

A = Aspen	J = Jack Pine	O = Oak	U = Upland Brush
B = Paper Birch	K = Rock	P = Lowland Poplar	UM = Upland Mix Forest
C = Cedar	L = Lowland Brush	Q = Mixed Swamp Conifer	V = Bog or Marsh
D = Treed Bog	LM = Lowland Mix Forest	R = Red Pine	W = White Pine
E = Swamp Hardwoods	M = Maple, Beech, Birch	S = Black Spruce	X = Non Stocked
F = Spruce/Fir	MC = Mixed Conifer	T = Tamarack	Y = Sand
G = Grass	MD = Mixed Deciduous		Z = Water
H = Hemlock	N = Marsh		

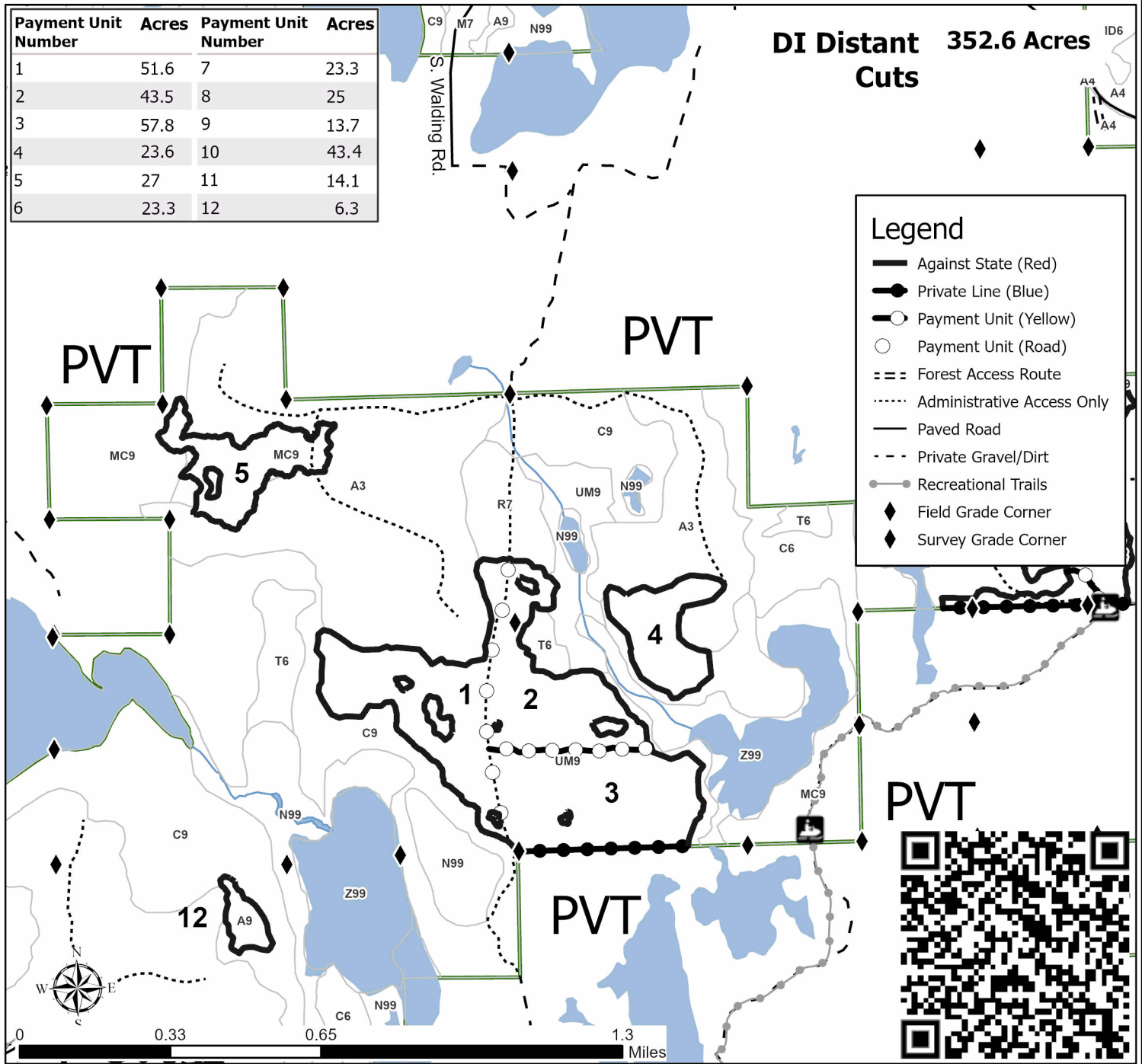
Density

0 = Non Stocked	5 = Pole Timber Medium
1 = Seedling Sapling Poor	6 = Pole Timber Well
2 = Seedling Sapling Medium	7 = Saw Timber Poor
3 = Seedling Sapling Well	8 = Saw Timber Medium
4 = Pole Timber Poor	9 = Saw Timber Well

Payment Unit Number	Acres	Payment Unit Number	Acres
1	51.6	7	23.3
2	43.5	8	25
3	57.8	9	13.7
4	23.6	10	43.4
5	27	11	14.1
6	23.3	12	6.3

DI Distant Cuts 352.6 Acres**Legend**

- Against State (Red)
- Private Line (Blue)
- Payment Unit (Yellow)
- Payment Unit (Road)
- Forest Access Route
- Administrative Access Only
- Paved Road
- - - Private Gravel/Dirt
- Recreational Trails
- ◆ Field Grade Corner
- ◆ Survey Grade Corner



TIMBER SALE MAP

This information provided by authority of Part 525, 1994 PA 451, as amended.

Sale Number

45-012-25

Date

11/07/2025

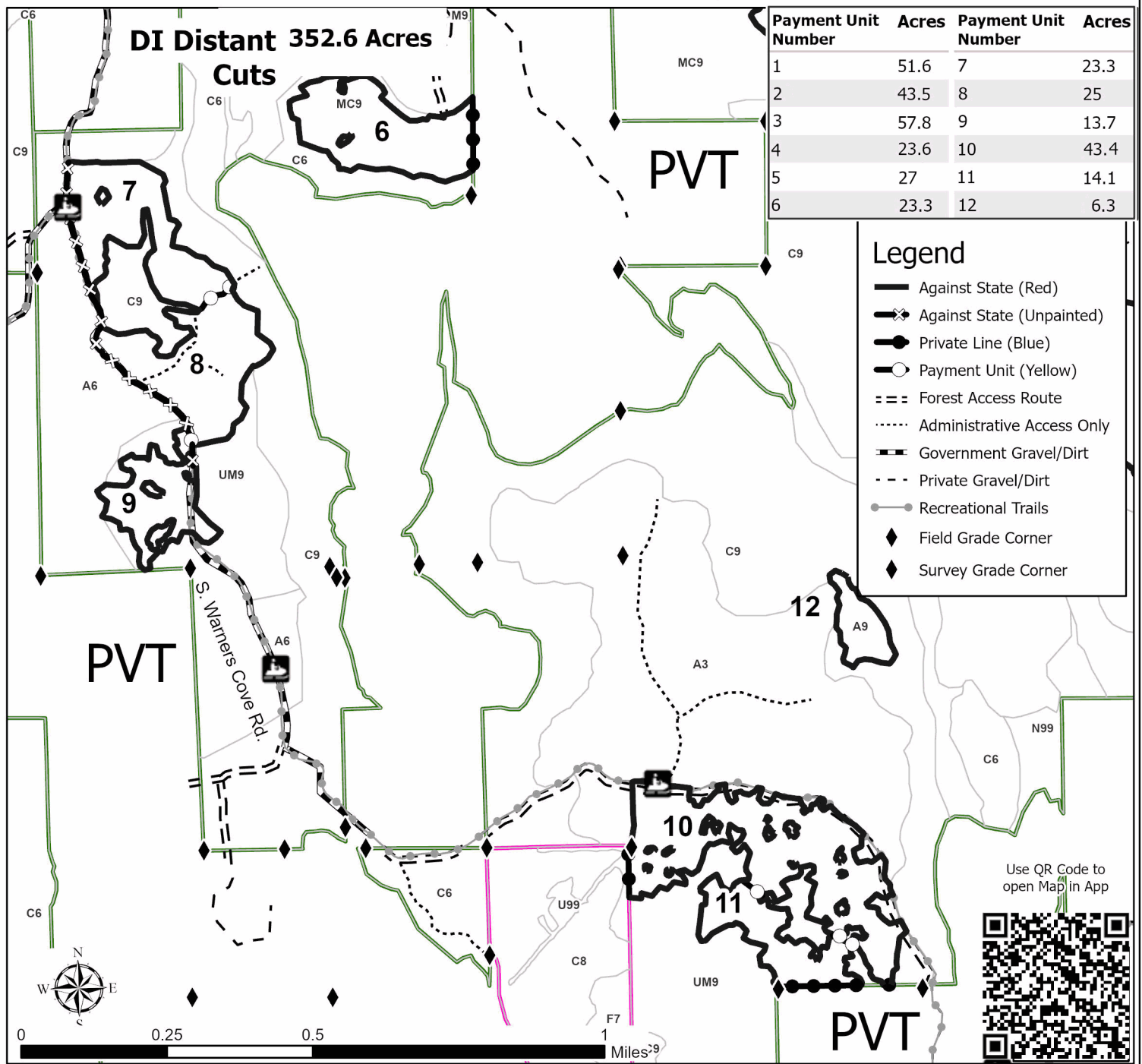
Forest Management Unit		County	Mapped By:	Scale	Page	Of
Sault Ste Marie Mgt Unit		Chippewa	Cruised By:	1:15,840	3	3
Township	Range	Section(s) and N1/2NW,SENW,NWNE,S1/2NE; Sec. 8 N1/2SE,SESE; Sec. 9 S1/2NW,SW; Subdivision(s) Sec. 17 NENW,S1/2NW,N1/2SW; Sec. 5 SESW; Sec. 7 NENW,S1/2NW,W1/2NE,SW; Sec. 8				
41N	06E					

Cover Type

A = Aspen	J = Jack Pine	O = Oak	U = Upland Brush
B = Paper Birch	K = Rock	P = Lowland Poplar	UM = Upland Mix Forest
C = Cedar	L = Lowland Brush	Q = Mixed Swamp Conifer	V = Bog or Marsh
D = Treed Bog	LM = Lowland Mix Forest	R = Red Pine	W = White Pine
E = Swamp Hardwoods	M = Maple, Beech, Birch	S = Black Spruce	X = Non Stocked
F = Spruce/Fir	MC = Mixed Conifer	T = Tamarack	Y = Sand
G = Grass	MD = Mixed Deciduous		Z = Water
H = Hemlock	N = Marsh		

Density

0 = Non Stocked	5 = Pole Timber Medium
1 = Seedling Sapling Poor	6 = Pole Timber Well
2 = Seedling Sapling Medium	7 = Saw Timber Poor
3 = Seedling Sapling Well	8 = Saw Timber Medium
4 = Pole Timber Poor	9 = Saw Timber Well



TIMBER SALE INFORMATION

DI Backyard Boards (45-013-25)

T41N, R06E, SEC. 4; T41N, R06E, SEC. 5; T41N, R06E, SEC. 6; T42N, R06E, SEC. 31; T42N, R06E, SEC. 32.
Chippewa County (Advertised Price \$8,365.85)

SALE NOTE: This sale will require access through private property.

Access may be through private land.

A timber sale contract for this lump sum, sealed bid timber sale will be awarded to the responsible bidder offering the highest sealed bid price. All units of volume listed below were estimated using the Inventory Manager computer program and the new Michigan taper model. Bids must be at or above the following advertised price for each product and species:

<u>PRODUCTS & SPECIES</u>	<u>ESTIMATED UNITS*</u>	<u>ADVERTISED PRICE</u>
Sawtimber		
Sugar Maple	18.5 MBF	\$ 139.00 / MBF
Pulpwood		
Balsam Fir	62 Cords	\$ 6.60 / Cord
Mixed Aspen	256 Cords	\$ 8.50 / Cord
Mixed Hardwood	340 Cords	\$ 7.50 / Cord
N. White Cedar	157 Cords	\$ 2.55 / Cord
Paper Birch	23 Cords	\$ 5.80 / Cord
White Spruce	19 Cords	\$ 6.60 / Cord

* The total volume is statistically estimated within plus (+) or minus (-) 16.70 percent. There are an estimated 900 cords on this timber sale, plus or minus 150 cords at the 95% confidence level. The estimated units are final and not subject to adjustment. Prospective bidders are urged to examine this timber and to make their own estimates of quantity and quality.

BOND AND PAYMENT SCHEDULE:

- A bond in the amount of \$669.00 to insure faithful performance of the conditions of the contract will be deposited by the successful bidder within 21 days of the sale award.
- Cutting in any sale or unit without the required advance payment would be considered a trespass.
- Total payment must be paid in advance or according to the following schedule :
 - Ten percent (10%) of the sale value must be paid within 21 days of the sale award.
 - The 10% down payment will be credited towards the first unit cut.
 - Payment for each of the following units must be made before cutting begins in that unit:

PAYMENT UNIT NUMBER	PERCENT OF TOTAL SALE VALUE
01	20.7%
02	55.5%
03	23.8%
- If no cutting takes place, the 10% down payment will not be refunded.
- Operations on the contract issued will terminate on 06/30/2029.

SALE STATISTICS

Volumes were calculated in cubic feet using the Michigan taper model. Cubic foot volume includes all wood inside bark for the product indicated. For display purposes, cubic feet were converted to cords and MBF using a simple conversion factor, e.g. 79 cubic feet per cord and 185 cubic feet per MBF. The cubic foot volumes are precise; the cords and MBF volumes are not. Cubic foot volume cannot be directly converted to cords or boards with precision.

SALE VOLUMES

The total estimated sale volume may not equal the sum of the species/products due to the nature of statistical calculations associated with double sampling methodology.

VOLUME			STATISTICAL RANGE IN CORDS	
TOTAL CUBIC FEET	TOTAL CORDS	PERCENT ERROR	MINIMUM	MAXIMUM
71,087	900	16.70%	750	1,050

VDU VOLUMES

A VDU is a Volume Determination Unit. Volumes and their associated statistics are calculated at the VDU level and summarized to the sale level. There is often a one to one relationship between a VDU and a Payment Unit, but not always, depending on the cruise design. Refer to the VDU TO PAYMENT UNIT table.

VDU	VOLUME		PERCENT ERROR	RANGE IN CORDS	
	TOTAL CUBIC FEET	TOTAL CORDS		MINIMUM	MAXIMUM
3	28,370	359	22.49%	278	440
19	25,210	319	25.14%	239	399
30	17,507	222	45.86%	120	323
TOTAL:	71,087	900		637	1,162

VDU TO PAYMENT UNIT

When a VDU is associated with more than one Payment Unit (PU), the VDU volumes are assigned to the PU based on acres of the VDU within the PU.

VDU	VDU ACRES	PU	PU ACRES
TOTAL:			

DESCRIPTION OF TIMBER BY PAYMENT UNIT (PU)

PU	MARKET GROUP	PRODUCT	QUANTITY	UNIT	ACRES	ADVERTISE PRICE
1	Balsam Fir	Pulpwood	29	Cords	12.7	\$1,733.00
	Mixed Aspen		129	Cords		
	B. T. Aspen		14	Cords		
	Quaking Aspen		115	Cords		
	Mixed Hardwood		45	Cords		
	Basswood		2	Cords		
	Sugar Maple		21	Cords		
	White Ash		22	Cords		
	Paper Birch		14	Cords		
	White Spruce		4	Cords		
2	Sugar Maple	Sawtimber	18.5	MBF	43.1	\$4,641.50
	Mixed Hardwood	Pulpwood	276	Cords		
	Beech	84	Cords			
	Ironwood	1	Cords			
	Sugar Maple	191	Cords			
	3	Balsam Fir	Pulpwood	33		
Mixed Aspen		127		Cords		
Balsam Poplar		3		Cords		
Quaking Aspen		124		Cords		
Mixed Hardwood		19		Cords		
Beech		1		Cords		
Red Maple		14		Cords		
Striped Maple		2		Cords		
Sugar Maple		2		Cords		
N. White Cedar		157		Cords		
Paper Birch		9		Cords		
White Spruce		15		Cords		
TOTAL:			18.5	MBF		
TOTAL:			857	Cords		

Sale Specific Conditions & Requirements

Sale Name: DI Backyard Boards

Sale Number: 45-013-25 Seq#: 1

1 - Sale Area

1.2 - Boundaries

1.2.1 - Painted Boundaries (9/19)

The sale boundary and Payment Unit boundaries are marked and identified by blue and red paint. Exterior sale boundary lines against private property are marked with blue paint. Exterior sale boundary lines against state are marked with red paint. The painted boundary line trees are not Included Timber and are to be protected unless marked with orange paint.

2 - Timber Specifications

2.1 - Included Timber

2.1.1 - Clearcut Unit(s) with Unmerchantable Trees (6/14)

Within Payment Unit(s) 1 & 3, cut all trees that are two (2) inches or more at DBH, except do not cut pine, hemlock, yellow birch, oak, or elm. In addition, within Payment Unit 1, do not cut cedar or beech.

2.1.3 - Cut Tree Marked Unit(s) (12/08)

Within Payment Unit(s) 2, all trees are designated for cutting when marked with orange paint above and below stump height, regardless of merchantability.

2.1.9 - Harvest Exception (12/24)

Do not cut any cedar trees in Payment Unit 1 other than those that are necessary to remove in order to operate within the Sale Area. Every effort must be made to preserve the existing cedar and to leave an intact stand upon sale completion. All cut cedar shall be piled separately by product and scaled in the woods, unless other scaling arrangements are agreed to by the Unit Manager or his/her representative. Stumpage price for cedar shall be \$20.00 per cord.

2.1.15 - Hazard Trees Near Roads (12/24)

Cut and remove all standing dead trees within 75 feet of the cleared portion of S. Walding Rd. These trees may be utilized or must be scattered back into the Sale Area.

2.2 - Utilization

2.2.3 - Stump Heights (12/24)

Stump heights within the Sale Area shall not exceed 24 inches for trees greater than 10 inches at DBH and multi-stemmed trees, and twelve (12) inches for trees smaller than 10 inches at DBH.

3 - Payments

3.3 - Pre-measured Sales

3.3.4 - Dividing Payment Units (7/14)

Payment Unit(s) may be divided at the request of the Purchaser and upon approval of the Unit Manager. Dividing Payment Units is a contract modification which requires a Timber Sale Contract Amendment. There will be only one division per Payment Unit. When paint or flagging is used to mark the divisions of Payment Units, the trees identifying the Payment Unit may only be harvested once both Payment Units have been paid for.

3.4 - Damaged Timber

3.4.1 - Damaged Timber (12/24)

General Condition and Requirement 3.4 Damaged Timber, defines liquidated damages for undesignated live merchantable trees which are cut or injured.

No damage is acceptable to undesignated live merchantable trees. Within the Sale Area, if more than 5% of trees (> 4.5" DBH) within a specified area of the sale are damaged, liquidated damages will be assessed for all trees damaged. Rates will be in accordance with General Condition and Requirement 3.4 Damaged Timber.

4 - Transportation

4.1 - Construction

4.1.3 - Slash and Earthen Piles (8/04)

Piles or windrows of earth along roads and landings that have been widened or constructed shall be leveled. Slash from road maintenance or construction, including stumps, shall be dispersed throughout the sale.

4.1.6 - Road Construction (4/24)

Construction of new roads or improvements of existing roads shall be done in such a way as to minimize the environmental and visual impacts. Merchantable trees shall be cut and utilized unless otherwise directed. Non-merchantable trees shall be severed and laid flat on the ground. Slash shall be scattered, not left in windrows, and kept a minimum of 10 feet back from the road edge. Stumps shall be set upright, not left on edge, and be moved at least 10 feet away from the road edge. Disturbed soil shall be feathered into the woods and not left in berms or windrows.

4.1.7 - Road Closure (10/11)

All new roads built into the sale must be blocked to vehicle traffic upon completion of the sale. Overgrown roads that are reopened shall be considered new roads. In general, this will require constructing double earthen berms at strategic locations. Stumps and brush must be placed along the remainder of the trail. These roads must be rendered impassable to cars and trucks. Contact the Sale Administrator for specific details of design and placement.

4.4 - Access

4.4.1 - Private property access (3/11)

Permission for access across private land is the responsibility of the Purchaser. Should the Purchaser desire to cross private land, a copy of the written permission from the private landowner may be required by the DNR.

5 - Operations

5.2 - Conduct of Operations

5.2.1 - Slash

5.2.1.8 - Slash Height (12/08)

No slash or tree tops may exceed 24 inches in height.

5.2.2 - Hazard Trees/Snags

5.2.2.1 - Den Trees (10/16)

Obvious hollow and/or den trees shall be protected and left standing unless they are a safety hazard.

5.2.3 - Operating Restrictions

5.2.3.1 - Operating Restrictions (9/11)

Within Payment Unit(s) 1 & 3, unless changed by written agreement, cutting, skidding, and hauling are limited to the period of December 1 to March 31. This restriction is to provide food resources for wintering deer.

5.2.3.3 - Bark Slippage Restriction (3/09)

Within Payment Unit(s) 2, unless changed by written agreement, cutting and skidding are not permitted during the period of May 1 to July 1. This restriction is because of bark slippage.

5.2.4 - Dead and Down Creation

5.2.4.6 - Dead and Down Creation, Other (9/09)

In Payment Unit 3, create hare habitat by leaving slash in piles measuring 6' tall and 12' in diameter throughout the Payment Unit. Leave one pile every 2 acres.

5.2.32 - Decking/Landing Restoration (9/13)

All decking and landing areas must have the surface area restored to a condition equal to or better than before. This is to ensure the proper regeneration of the stand. Wood debris, chips and "cookies" from trimmings must be removed or scattered away from landing and loading areas and may not be windrowed on the edge.

5.2.37 - No Decking Areas (12/08)

No decking is allowed within 50 feet of S. Walding Rd.

5.2.38 - No Decking Against Live Trees (2/04)

Cut products may not be decked against unmarked or designated leave trees.

5.8 - Protection of Endangered Species

5.8.5 - Protection of Raptor Nests (3/13)

All trees with raptor nests will be protected if found during harvesting operations. Notification will be made to the Unit Manager or his/her representative who will notify the Wildlife Biologist so an onsite evaluation and recommendation can be made, if necessary.

6 - Safety and Fire Prevention

6.2 - Signing

6.2.1 - Road Posting (10/20)

The Purchaser is responsible for posting and maintaining caution signs on S. Walding Rd. prior to beginning operations. The road must be posted at appropriate distances from the Sale Area to warn of logging activity and truck traffic. Signs must be removed when harvest operations are suspended or completed. The Purchaser will provide these signs.

TIMBER SALE MAP

This information provided by authority of Part 525, 1994 PA 451, as amended.

Sale Number

45-013-25

Date

09/18/2025

Forest Management Unit

County

Mapped By: Louis Radecki

Scale

Page

Of

Sault Ste Marie Mgt Unit

Chippewa

Cruised By: Louis Radecki

1:20,000**1****1**Township
41N / 42NRange
06E

Section(s) and

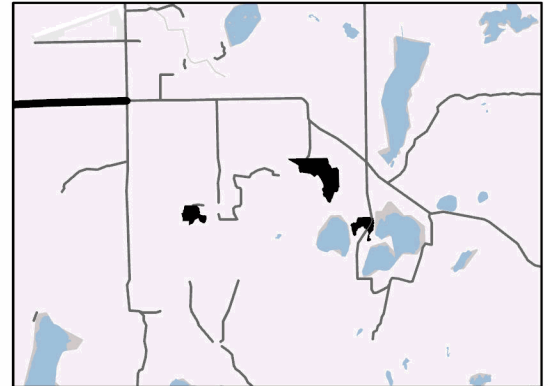
Subdivision(s) Sec. 31 SESW,SWSE; Sec. 32 NESW,W1/2SE; Sec. 4 NWNW; Sec. 5 NENE; Sec. 6 NENW,NWNE;

Cover Type

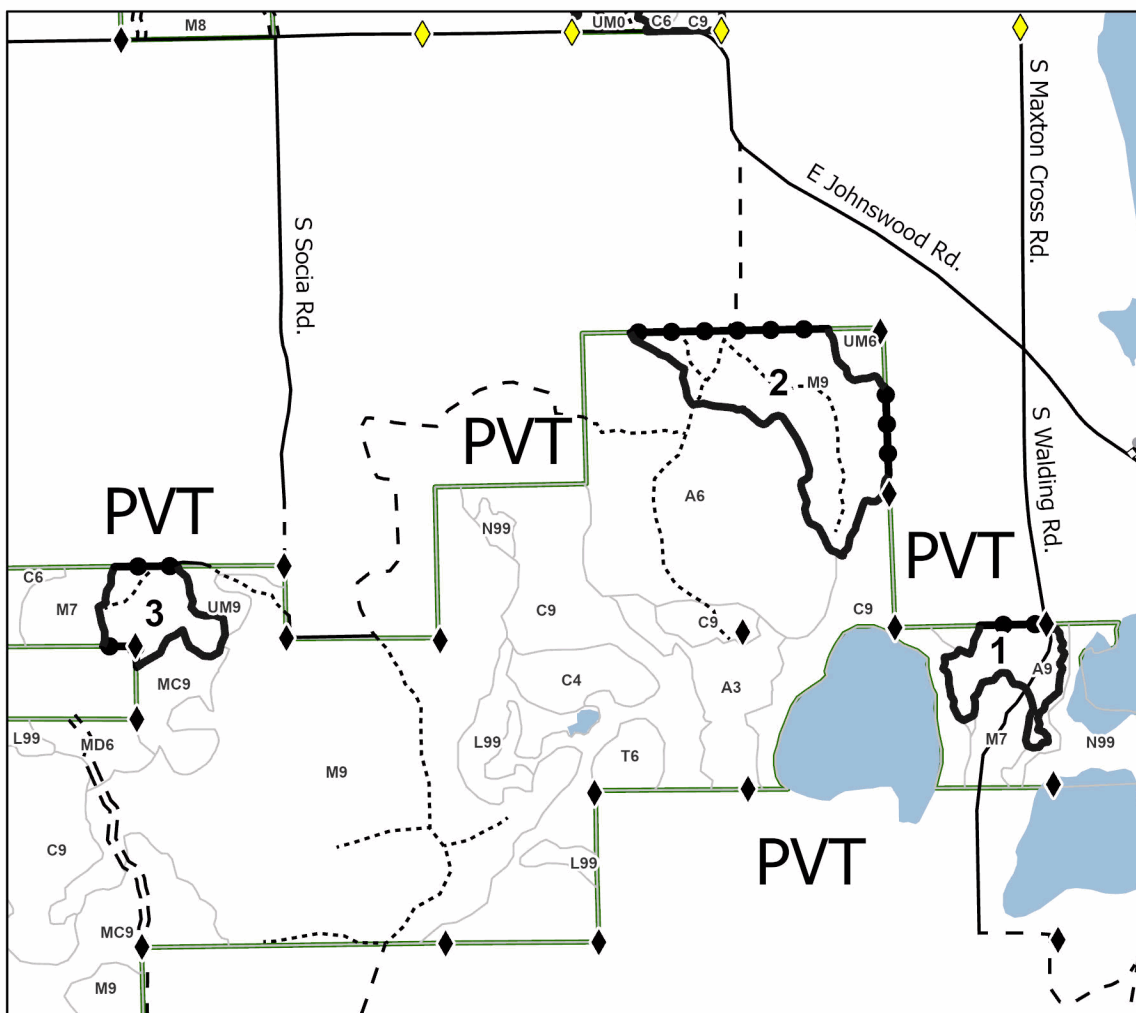
A = Aspen	J = Jack Pine	O = Oak	U = Upland Brush
B = Paper Birch	K = Rock	P = Lowland Poplar	UM = Upland Mix Forest
C = Cedar	L = Lowland Brush	Q = Mixed Swamp Conifer	V = Bog or Marsh
D = Treed Bog	LM = Lowland Mix Forest	R = Red Pine	W = White Pine
E = Swamp Hardwoods	M = Maple, Beech, Birch	S = Black Spruce	X = Non Stocked
F = Spruce/Fir	MC = Mixed Conifer	T = Tamarack	Y = Sand
G = Grass	MD = Mixed Deciduous		Z = Water
H = Hemlock	N = Marsh		

Density

0 = Non Stocked	5 = Pole Timber Medium
1 = Seedling Sapling Poor	6 = Pole Timber Well
2 = Seedling Sapling Medium	7 = Saw Timber Poor
3 = Seedling Sapling Well	8 = Saw Timber Medium
4 = Pole Timber Poor	9 = Saw Timber Well

Locator Map 1:100,000**Payment Unit Acres**

1	12.7
2	43.1
3	14

DI Backyard Boards**69.8 Acres****Legend**

- Against State (Red)
- Private Line (Blue)
- Forest Access Route
- Administrative Access Only
- Paved Road
- Government Gravel/Dirt
- Private Gravel/Dirt
- ◆ Field Grade Corner
- ◆ Survey Grade Corner

Use QR Code to
open Map in App

D.I. Deep Abyss (45-011-25)

T41N, R06E, SEC. 10; T41N, R06E, SEC. 11; T41N, R06E, SEC. 9; Chippewa

In response to the notice of sale to be held 10:00 a.m. (local time) on December 15, 2025, I am hereby submitting my sealed bid (firm offer) for the following forest products to be cut. Bids for individual species must be at or above the advertised price. All non-responsive bid forms may be rejected.

<u>PRODUCTS & SPECIES</u>	<u>ESTIMATED VOLUME*</u>	<u>ADVERTISED PRICE</u>	<u>BID PRICE/UNIT</u>
Sawtimber			
Sugar Maple	5.4 MBF	\$ 139.00/MBF	\$ _____
Pulpwood			
Balsam Fir	131 Cords	\$ 6.60/Cord	\$ _____
Balsam Poplar	20 Cords	\$ 7.10/Cord	\$ _____
Mixed Aspen	320 Cords	\$ 8.50/Cord	\$ _____
Mixed Hardwood	349 Cords	\$ 7.50/Cord	\$ _____
Mixed Spruce	37 Cords	\$ 6.60/Cord	\$ _____
N. White Cedar	99 Cords	\$ 2.55/Cord	\$ _____
Paper Birch	38 Cords	\$ 5.80/Cord	\$ _____
Red Pine	139 Cords	\$ 55.50/Cord	\$ _____
White Pine	345 Cords	\$ 13.00/Cord	\$ _____

*The volumes are statistically estimated within plus (+) or minus (-) 15.15 percent at 95% confidence level. These estimated volumes are final and not subject to adjustment. Prospective bidders are urged to examine this timber and to make their own estimates of quantity and quality.

I understand that any or all bids may be rejected. All bids must be signed and all bid items must be bid or the bid form may be rejected. I also understand that consideration and awarding a contract will be based upon my past performance and ability to complete the contract based upon equipment and staffing subject to my control.

FEDERAL ID: ____ - ____ - ____ or SOCIAL SECURITY NUMBER: ____ - ____ - ____

Company or individual bidding: _____

Company representative's name: _____

Address: _____

City: _____ State: _____ Zip: _____

IF AVAILABLE, PLEASE PLACE THE PERSONALIZED LABEL FROM YOUR PROSPECTUS IN THE ABOVE BOX.

Individual or company representative's signature: _____ Date: _____

Phone number : _____ Email (optional): _____

**THE WINNING BIDDER MUST COMPLETE THE VERIFICATION OF WORKER'S DISABILITY COMPENSATION ACT
COMPLIANCE (ON REVERSE SIDE IF DOUBLE SIDED) WITHIN 21 DAYS OF SALE AWARD DATE**



TIMBER SALE VERIFICATION OF WORKER'S DISABILITY COMPENSATION ACT COMPLIANCE

As required by Act 317, P.A. 1969 (Worker's Compensation) and
Part 5 of Act 451 of 1994, as amended.

FOR DEPARTMENT USE ONLY

Sale Number (XX - XXX - XX - XX)

Forest Management Unit:

VERIFICATION OF WORKER'S DISABILITY COMPENSATION ACT COMPLIANCE

- This verification must be completed and submitted within 21 days of contract award and prior to the issuance of the timber sale contract.
- In addition, if boxes 2B or 2C are checked, then Notice of Exclusion or Certificate of Insurance must be submitted within twenty-one (21) days of the contract award and prior to the issuance of the timber sale contract.
- All Information must be typed or printed except for written signatures.

Please Check Appropriate Categories:

1. My business is organized as (you **must** check one of the boxes below):
 - A. ☐ Sole Proprietorship (individual)
 - B. ☐ Partnership
 - C. ☐ Corporation
2. You **must** check one of the boxes below:
 - A. ☐ I certify my business is a sole proprietorship and it has no employees but the sole proprietor. I am not subject to the Worker's Compensation Laws.
 - B. ☐ I certify my business has satisfied its obligation to the Worker's Compensation Act through the use of an approved Notice of Exclusion (BWC-337, Rev. 5/96). I will provide a copy of the Notice of Exclusion within 21 days of the contract award. (For questions or a copy of the BWC-337, please call the Worker's Compensation Bureau at 517-322-1195).
 - C. ☐ I certify my business has a Worker's Compensation Policy. I will provide an original Certificate of Insurance within twenty-one (21) days of the contract award.
3. If you have checked item 2(A) or 2(B), you **must** indicate the number of **both** full-time and part-time employees, other than yourself, including family members and active partners (if none, you must enter "0").

_____ Full-time Employees

_____ Part-time Employees

Name of Business		Federal ID (or) Social Security No.
Address		Telephone ()
City	State	ZIP

I hereby certify that the above information is true and correct. I agree to notify the Michigan DNR of any changes that occur in factors affecting my coverage during any of my present and future operations.

Signature of Owner or Authorized Representative

Title

Date

Please complete the "SEALED BID" information on the next page

DI Distant Cuts (45-012-25)

T41N, R06E, SEC. 17; T41N, R06E, SEC. 5; T41N, R06E, SEC. 7; T41N, R06E,

In response to the notice of sale to be held 10:00 a.m. (local time) on December 15, 2025, I am hereby submitting my sealed bid (firm offer) for the following forest products to be cut. Bids for individual species must be at or above the advertised price. All non-responsive bid forms may be rejected.

<u>PRODUCTS & SPECIES</u>	<u>ESTIMATED VOLUME*</u>	<u>ADVERTISED PRICE</u>	<u>BID PRICE/UNIT</u>
Pulpwood			
Balsam Fir	721 Cords	\$ 6.60/Cord	\$ _____
Balsam Poplar	72 Cords	\$ 7.10/Cord	\$ _____
Mixed Aspen	2,761 Cords	\$ 8.50/Cord	\$ _____
Mixed Hardwood	46 Cords	\$ 7.50/Cord	\$ _____
N. White Cedar	1,320 Cords	\$ 2.55/Cord	\$ _____
Paper Birch	375 Cords	\$ 5.80/Cord	\$ _____
Red Pine	494 Cords	\$ 55.50/Cord	\$ _____
Tamarack	28 Cords	\$ 2.90/Cord	\$ _____
White Pine	140 Cords	\$ 13.00/Cord	\$ _____
White Spruce	378 Cords	\$ 6.60/Cord	\$ _____

*The volumes are statistically estimated within plus (+) or minus (-) 7.76 percent at 95% confidence level. These estimated volumes are final and not subject to adjustment. Prospective bidders are urged to examine this timber and to make their own estimates of quantity and quality.

I understand that any or all bids may be rejected. All bids must be signed and all bid items must be bid or the bid form may be rejected. I also understand that consideration and awarding a contract will be based upon my past performance and ability to complete the contract based upon equipment and staffing subject to my control.

FEDERAL ID: ____ - ____ - ____ or SOCIAL SECURITY NUMBER: ____ - ____ - ____
Company or individual bidding: _____
Company representative's name: _____
Address: _____
City: _____ State: _____ Zip: _____

IF AVAILABLE, PLEASE PLACE THE PERSONALIZED LABEL FROM YOUR PROSPECTUS IN THE ABOVE BOX.

Individual or company representative's signature: _____ Date: _____

Phone number : _____ Email (optional): _____

**THE WINNING BIDDER MUST COMPLETE THE VERIFICATION OF WORKER'S DISABILITY COMPENSATION ACT
COMPLIANCE (ON REVERSE SIDE IF DOUBLE SIDED) WITHIN 21 DAYS OF SALE AWARD DATE**



TIMBER SALE VERIFICATION OF WORKER'S DISABILITY COMPENSATION ACT COMPLIANCE

As required by Act 317, P.A. 1969 (Worker's Compensation) and
Part 5 of Act 451 of 1994, as amended.

FOR DEPARTMENT USE ONLY

Sale Number (XX - XXX - XX - XX)

Forest Management Unit:

VERIFICATION OF WORKER'S DISABILITY COMPENSATION ACT COMPLIANCE

- This verification must be completed and submitted within 21 days of contract award and prior to the issuance of the timber sale contract.
- In addition, if boxes 2B or 2C are checked, then Notice of Exclusion or Certificate of Insurance must be submitted within twenty-one (21) days of the contract award and prior to the issuance of the timber sale contract.
- All information must be typed or printed except for written signatures.

Please Check Appropriate Categories:

1. My business is organized as (you **must** check one of the boxes below):
 - A. ☐ Sole Proprietorship (individual)
 - B. ☐ Partnership
 - C. ☐ Corporation
2. You **must** check one of the boxes below:
 - A. ☐ I certify my business is a sole proprietorship and it has no employees but the sole proprietor. I am not subject to the Worker's Compensation Laws.
 - B. ☐ I certify my business has satisfied its obligation to the Worker's Compensation Act through the use of an approved Notice of Exclusion (BWC-337, Rev. 5/96). I will provide a copy of the Notice of Exclusion within 21 days of the contract award. (For questions or a copy of the BWC-337, please call the Worker's Compensation Bureau at 517-322-1195).
 - C. ☐ I certify my business has a Worker's Compensation Policy. I will provide an original Certificate of Insurance within twenty-one (21) days of the contract award.
3. If you have checked item 2(A) or 2(B), you **must** indicate the number of **both** full-time and part-time employees, other than yourself, including family members and active partners (if none, you must enter "0").

_____ Full-time Employees

_____ Part-time Employees

Name of Business		Federal ID (or) Social Security No.
Address		Telephone ()
City	State	ZIP

I hereby certify that the above information is true and correct. I agree to notify the Michigan DNR of any changes that occur in factors affecting my coverage during any of my present and future operations.

Signature of Owner or Authorized Representative

Title

Date

Please complete the "SEALED BID" information on the next page

DI Backyard Boards (45-013-25)

T41N, R06E, SEC. 4; T41N, R06E, SEC. 5; T41N, R06E, SEC. 6; T42N, R06E,

In response to the notice of sale to be held 10:00 a.m. (local time) on December 15, 2025, I am hereby submitting my sealed bid (firm offer) for the following forest products to be cut. Bids for individual species must be at or above the advertised price. All non-responsive bid forms may be rejected.

<u>PRODUCTS & SPECIES</u>	<u>ESTIMATED VOLUME*</u>	<u>ADVERTISED PRICE</u>	<u>BID PRICE/UNIT</u>
Sawtimber			
Sugar Maple	18.5 MBF	\$ 139.00/MBF	\$ _____
Pulpwood			
Balsam Fir	62 Cords	\$ 6.60/Cord	\$ _____
Mixed Aspen	256 Cords	\$ 8.50/Cord	\$ _____
Mixed Hardwood	340 Cords	\$ 7.50/Cord	\$ _____
N. White Cedar	157 Cords	\$ 2.55/Cord	\$ _____
Paper Birch	23 Cords	\$ 5.80/Cord	\$ _____
White Spruce	19 Cords	\$ 6.60/Cord	\$ _____

*The volumes are statistically estimated within plus (+) or minus (-) 16.70 percent at 95% confidence level. These estimated volumes are final and not subject to adjustment. Prospective bidders are urged to examine this timber and to make their own estimates of quantity and quality.

I understand that any or all bids may be rejected. All bids must be signed and all bid items must be bid or the bid form may be rejected. I also understand that consideration and awarding a contract will be based upon my past performance and ability to complete the contract based upon equipment and staffing subject to my control.

FEDERAL ID: ____ - ____ - ____ or SOCIAL SECURITY NUMBER: ____ - ____ - ____
Company or individual bidding: _____
Company representative's name: _____
Address: _____
City: _____ State: _____ Zip: _____

IF AVAILABLE, PLEASE PLACE THE PERSONALIZED LABEL FROM YOUR PROSPECTUS IN THE ABOVE BOX.

Individual or company representative's signature: _____ Date: _____

Phone number : _____ Email (optional): _____

**THE WINNING BIDDER MUST COMPLETE THE VERIFICATION OF WORKER'S DISABILITY COMPENSATION ACT
COMPLIANCE (ON REVERSE SIDE IF DOUBLE SIDED) WITHIN 21 DAYS OF SALE AWARD DATE**



TIMBER SALE VERIFICATION OF WORKER'S DISABILITY COMPENSATION ACT COMPLIANCE

As required by Act 317, P.A. 1969 (Worker's Compensation) and
Part 5 of Act 451 of 1994, as amended.

FOR DEPARTMENT USE ONLY

Sale Number (XX - XXX - XX - XX)

Forest Management Unit:

VERIFICATION OF WORKER'S DISABILITY COMPENSATION ACT COMPLIANCE

- This verification must be completed and submitted within 21 days of contract award and prior to the issuance of the timber sale contract.
- In addition, if boxes 2B or 2C are checked, then Notice of Exclusion or Certificate of Insurance must be submitted within twenty-one (21) days of the contract award and prior to the issuance of the timber sale contract.
- All Information must be typed or printed except for written signatures.

Please Check Appropriate Categories:

1. My business is organized as (you **must** check one of the boxes below):
 - A. ☐ Sole Proprietorship (individual)
 - B. ☐ Partnership
 - C. ☐ Corporation
2. You **must** check one of the boxes below:
 - A. ☐ I certify my business is a sole proprietorship and it has no employees but the sole proprietor. I am not subject to the Worker's Compensation Laws.
 - B. ☐ I certify my business has satisfied its obligation to the Worker's Compensation Act through the use of an approved Notice of Exclusion (BWC-337, Rev. 5/96). I will provide a copy of the Notice of Exclusion within 21 days of the contract award. (For questions or a copy of the BWC-337, please call the Worker's Compensation Bureau at 517-322-1195).
 - C. ☐ I certify my business has a Worker's Compensation Policy. I will provide an original Certificate of Insurance within twenty-one (21) days of the contract award.
3. If you have checked item 2(A) or 2(B), you **must** indicate the number of **both** full-time and part-time employees, other than yourself, including family members and active partners (if none, you must enter "0").

_____ Full-time Employees

_____ Part-time Employees

Name of Business		Federal ID (or) Social Security No.
Address		Telephone ()
City	State	ZIP

I hereby certify that the above information is true and correct. I agree to notify the Michigan DNR of any changes that occur in factors affecting my coverage during any of my present and future operations.

Signature of Owner or Authorized Representative

Title

Date

Please complete the "SEALED BID" information on the next page