



**DEPARTMENT OF NATURAL RESOURCES  
STATE OF MICHIGAN  
TIMBER SALE PROSPECTUS #7719**

**SCHEDULED SALE DATE AND TIME: 4:00 p.m. (local time) on December 11, 2025.**

**LOCATION: TRAVERSE CITY MGMT UNIT, 2122 M 37 SOUTH, TRAVERSE CITY, MI 49685.**

**PROSPECTUS NOTE:** The bidder is advised to inspect the sale area and review the location, estimated volumes, operating costs and contract terms of proposed sales. Please be aware that some landowners may request 60 days or more notice for access across their land.

Notice is hereby given that bids will be received by the Unit Manager, TRAVERSE CITY MANAGEMENT UNIT, for certain timber on the following described lands:

**New Puppy Mix** (61-102-25) / T28N, R05W, SEC. 11, SESW,SE.

T28N, R05W, SEC. 12, S1/2SW.

T28N, R05W, SEC. 14, NENW,NWNE.

Kalkaska County, Advertised Price \$76,652.25, 92.6 Acres, Hardwood, Aspen.

SALE NOTE: 5.2.3.3 - Bark Slippage Restriction applies to Payment unit #2.

A recreation site such as a trail, pathway, or campground is within the sale area or the vicinity. Certain restrictions/specifications may be applicable including time restrictions.

**26 Gap Hardwoods** (61-103-25) / T28N, R05W, SEC. 10, NE,N1/2SE,SWSE.

T28N, R05W, SEC. 11, NW,NWNE,NWSW.

Kalkaska County, Advertised Price \$34,535.45, 44.9 Acres, Hardwood, Aspen.

SALE NOTE: 99.1 - Unique Sale Condition - Harvest is gap harvest. Skidding between gaps is allowed. No roads will be allowed between gaps. See Timber Sale Map for direction of wood flow to landings. Skidding may exceed 1/2 a mile to landing. An additional 15% has been deducted from the minimum bid prices to reflect these requirements.

A recreation site such as a trail, pathway, or campground is within the sale area or the vicinity. Certain restrictions/specifications may be applicable including time restrictions.

**Wow Oak Aspen** (61-124-25) / T27N, R05W, SEC. 25, S1/2SW.

T27N, R05W, SEC. 35, NENW,N1/2NE.

T27N, R05W, SEC. 36, N1/2NW.

Kalkaska County, Advertised Price \$56,744.40, 65.0 Acres, Aspen, Red Oak.

**Professional Hdwd** (61-126-25) / T27N, R05W, SEC. 34, W1/2SW.

Kalkaska County, Advertised Price \$11,271.40, 19.4 Acres, Hardwood, Sugar Maple.

SALE NOTE: Bidders should note the higher-than-normal bond amount.

**Slew Foot Mix** (61-127-25) / T25N, R05W, SEC. 16, W1/2NW,NE,NWSW.

T25N, R05W, SEC. 17, SENE,NESE.

T25N, R05W, SEC. 9, SESE.

Kalkaska County, Advertised Price \$140,250.40, 152.1 Acres, Aspen, Hardwood.

Yellow Brick Road Pine (61-132-25) / T26N, R05W, SEC. 10, W1/2NW.

T26N, R05W, SEC. 15, W1/2NW.

T26N, R05W, SEC. 16, E1/2NE, NESE, S1/2SE.

T26N, R05W, SEC. 21, NW, N1/2NE, SWNE, N1/2SW, SWSW.

T26N, R05W, SEC. 21, NWSE.

T26N, R05W, SEC. 9, S1/2NE, NESW, N1/2SE, SESE.

Kalkaska County, Advertised Price \$296,290.95, 388.5 Acres, Red Pine, Jack Pine.

SALE NOTE: A recreation site such as a trail, pathway, or campground is within the sale area or the vicinity.  
Certain restrictions/specifications may be applicable including time restrictions.

## BID INSTRUCTIONS (VER. 10/10/2022):

### 1. Scheduled Bid Location, Date, and Time (2/11)

Bids must be received by the Unit Manager, TRAVERSE CITY OFFICE, 2122 M 37 South, Traverse City, MI 49685, no later than 4:00 p.m. (local time) on December 11, 2025. For further information concerning this sale, contact Matthew Edison at 906-291-0095.

### 2. Bidder's Qualifications (10/22)

If all or part of a timber sale was prepared by a private contractor, the contractor and that contractor's company are not permitted to bid on the timber sale. A person must be 18 years of age or older to purchase timber. Permanent employees of the Department of Natural Resources or members of their immediate household may not bid. Former employees, in the permanent or seasonal class, may not bid until 3 months after the last day of active duty. Bids will not be accepted from individuals or companies appearing on the DNR/FRD No-Bid List. This list contains the names of purchasers who previously failed to execute a contract within 21-days or who have a history of poor performance.

### 3. Preparation of Sealed Bids (5/16)

Bid Forms may be completed online thru Michigan DNR Timber Sale Online Bidding (OLB) at [www.michigan.gov/timberbidding](http://www.michigan.gov/timberbidding) or by completing the hardcopy Bid Form found in the Timber Sale Prospectus. Hardcopy Bid Forms shall be manually signed in ink. Registration in OLB is considered your 'signature' for all bids submitted thru that system. Bid prices must be entered for each species and product in the Bid Price column for all material subject to bidding and all fill-in blanks must be completed. If erasures or other changes appear on the hardcopy Bid Form, each erasure or change must be initialed by the person signing the bid.

### 4. Submission of Sealed Bids (5/16)

Bid forms may be obtained from the Unit Manager or thru OLB. Bids may be submitted hardcopy or thru OLB. All hardcopy bids must be submitted on the bid form and in an envelope clearly identified as described in this section. NOTE: Only one bid form per bid envelope. Sealed bids must be submitted to the Unit office designated in the prospectus and must be submitted at or prior to the time established in the prospectus. The envelope should show on the outside (a) the sale name or number and (b) the date and time of bid opening, as shown in the prospectus. Bids received after the time specified in the sale prospectus are late bids and will be rejected.

It is possible for a bidder to submit multiple bids on a single sale. For example, a bid may be submitted hardcopy and a bid may be submitted thru OLB. Or, two bidders from the same company could both submit bids on the same sale. If this were to happen, the State would accept all bids received and award the contract accordingly. All bidding and contractual requirements would apply to all bids received.

### 5. Public Opening of Sealed Bids (7/16)

If conditions permit, the sealed bids will be publicly opened and posted at the time and place set in the prospectus.

If a bidder, present at a bid opening, has submitted bids on more than one sale, that bidder may withdraw their unopened bid envelopes or announce the withdrawal of their online bid after being declared the successful bidder on one sale.

### 6. Award of Contract (1/11)

Award of the contract will be made to the Bidder whose bid, conforming to the prospectus, is most advantageous to the State of Michigan on the basis of total value at rates bid for the estimated quantities. The State reserves the right to reject any bid or waive any minor irregularity in bids received. A written award mailed (or otherwise furnished) to the successful Bidder shall be deemed to result in a binding contract without further action by either party.

### 7. Down Payment (1/11)

The Bidder to whom award is made must make a down payment within 21 days of the sale award. The amount of the down payment will be calculated as shown in the Bond and Payment Schedule of this prospectus. Only cash may be used to meet this requirement.

### 8. Performance Security (1/11)

As guarantee of faithful performance, a cash bond, certificate of deposit, surety bond or irrevocable letter of credit (LOC) is required within 21 days of the sale award. The amount of the performance security is shown in the Bond and

Payment Schedule of this prospectus. If an LOC or surety is used, the coverage must extend for at least 6 months beyond the contract expiration.

#### 9. Worker's Compensation (10/22)

Purchaser shall obtain worker's compensation insurance to cover claims under Michigan's Worker's Disability Compensation Act of 1969 or similar employee benefit act of any other state applicable to an employee. Verification of Worker's Disability Compensation Act Compliance must be completed and submitted within 21 days of contract award and prior to the issuance of the timber sale contract. In addition, if applicable, Notice of Exclusion or Certificate of Insurance must also be submitted.

#### 10. Timber Sale Contract (10/22)

Additional conditions and requirements common to all timber sales are listed on the timber sale contract (R4031) and are available on line at [www.michigan.gov/timber](http://www.michigan.gov/timber). Contact the Unit Manager for additional information or a sample contract. Within 21 days of the date of the award letter, the bidder must sign the contract and provide the required down payment, performance security, and verification of worker's disability compensation. The down payment and performance security shall be in accordance with the provisions of the timber sale contract, in the sums stated in this prospectus. If these actions are not taken, then the Bidder, the Bidder's corporation, and the corporation's principals may not be permitted to bid on State timber sales for a period of 3 months after the first offense, 6 months after the second offense, and 1 year after the third offense. An offense will only be counted against the Bidder for 5 years. In addition, the Bidder certifies that if awarded this contract, the Bidder will complete the timber sale contract in accordance with its terms and any modifications thereof including requirements to purchase, cut, and remove the included timber by the expiration date.

Payment Unit values in the State Forest Timber Sale Contract are calculated based on the advertised value of the Payment Unit as a percentage of the total advertised value of the contract. The advertised value of each Payment Unit is given in the Description of Timber by Payment Unit table on the Timber Sale Information page. For example, if the value of Payment Unit 1 is advertised as \$1,500 and the total Timber Sale value is advertised as \$10,000, the contract price for Payment Unit 1 will be 15% of the total bid price ( $\$1,500/\$10,000 * 100$ ).

#### 11. Disclaimer of Estimates and Bidder's Warranty of Inspection (10/22)

Before submitting this bid, the Bidder is advised and cautioned to inspect the sale area, review the requirements of the sale contract, and take other steps as may be reasonably necessary to ascertain the location, estimated volumes, construction estimates, and operating costs of the proposed sale. Failure to do so will not relieve the Bidder from responsibility for completing the contract.

The Bidder warrants that this bid is submitted solely on the basis of the Bidder's examination and inspection of the quality and quantity of the timber offered for sale and the Bidder's opinion of the value thereof and the costs of recovery. No reliance should be placed on the State of Michigan's estimates of timber quality, quantity or costs of recovery. Bidder further acknowledges that the State of Michigan: (i) expressly disclaims any warranty of fitness of timber for any purpose; (ii) offers this timber as is without any warranty of quality (merchantability) or quantity and (iii) expressly disclaims any warranty as to the quantity or quality of timber sold.

#### 12. Certification and Chain-of-Custody (10/22)

Unless otherwise indicated in the contract under section 7 – Other Conditions of the Sale Specific Conditions & Requirements, the area encompassed by this timber sale is certified to the standards of the Forest Stewardship Council (FSC) - Certificate #SCS-FM/COC-00090N and the Sustainable Forestry Initiative (SFI) - Certificate #NSF-SFIS-5Y031-SF5. Forest products from this sale may be delivered to the mill as "FSC 100% and / or SFI certified" as long as the contractor hauling the forest products is chain-of-custody (COC) certified or covered under a COC certificate from the destination mill. The purchaser is responsible for maintaining COC after leaving the sale area.

#### 13. Good Neighbor Authority (GNA) Requirements (10/22)

If the name of this timber sales contains the acronym GNA, it is authorized by the Good Neighbor Authority (GNA) and covered by various agreements between the U.S. Forest Service and the State. The timber sale occurs on federal land and the following conditions apply:

GNA contracts on US Forest Service land will not be awarded to purchasers on the Federal list of excluded parties. The System for Award Management (SAM) will be checked for active excluded parties prior to award of contract. In

addition, the Bidder to whom award is made must complete an Assurance Regarding Felony Conviction or Tax Delinquent Status for Corporate Applicants (AD-3031).

14. Good Neighbor Authority (GNA) Requirements, con't (10/22)

Bidder certifies, by signing this bid form, that to the best of Bidder's knowledge that the following representations are accurate and complete.

- a. That the Bidder and its principals are not presently debarred, suspended, proposed for debarment, declared ineligible, or voluntary excluded from timber sales (covered transactions) by any Federal department or agency.
- b. That the Bidder and its principals have not within a 3-year period preceding this bid been convicted of or had a civil judgment rendered against them for commission of fraud or a criminal offense in connection with obtaining , attempting to obtain, or performing a public (Federal, State, or local) transaction or contract under a public transaction; violation of Federal or State antitrust statutes or commission of embezzlement, theft, forgery, bribery, falsification or destruction of records, making false statements, or receiving stolen property.
- c. That the Bidder and its principals are not presently indicted for or otherwise criminally or civilly charged by a governmental entity (Federal, State, or local) with commission of any of the offenses enumerated in paragraph b of this certification.
- d. That the Bidder and its principals have not within a 3-year period preceding this bid had one or more public transactions (Federal, State, or local) terminated for breach or default of a timber or forest product contract.

Bidders that cannot certify this requirement, in whole or in part, shall submit an explanation with their bid.

Scott Bowen  
Director



# TIMBER SALE INFORMATION

New Puppy Mix (61-102-25)

T28N, R05W, SEC. 11; T28N, R05W, SEC. 12; T28N, R05W, SEC. 14.

Kalkaska County (Advertised Price \$76,652.25)

SALE NOTE: 5.2.3.3 - Bark Slippage Restriction applies to Payment unit #2.

A recreation site such as a trail, pathway, or campground is within the sale area or the vicinity. Certain restrictions/specifications may be applicable including time restrictions.

A timber sale contract for this lump sum, sealed bid timber sale will be awarded to the responsible bidder offering the highest sealed bid price. All units of volume listed below were estimated using the Inventory Manager computer program and the new Michigan taper model. Bids must be at or above the following advertised price for each product and species:

PRODUCTS & SPECIES	ESTIMATED UNITS*		ADVERTISED PRICE
Sawtimber			
Basswood	102.6	MBF	\$ 110.00 / MBF
Red Maple	1.8	MBF	\$ 89.00 / MBF
Sugar Maple	99.3	MBF	\$ 204.00 / MBF
Pulpwood			
B. T. Aspen	436	Cords	\$ 19.30 / Cord
Mixed Hardwood	1,010	Cords	\$ 15.40 / Cord
Red Pine	371	Cords	\$ 56.55 / Cord

\* The total volume is statistically estimated within plus (+) or minus (-) 15.80 percent. There are an estimated 2,293 cords on this timber sale, plus or minus 362 cords at the 95% confidence level. The estimated units are final and not subject to adjustment. Prospective bidders are urged to examine this timber and to make their own estimates of quantity and quality.

## **BOND AND PAYMENT SCHEDULE:**

1. A bond in the amount of \$3,833.00 to insure faithful performance of the conditions of the contract will be deposited by the successful bidder within 21 days of the sale award.
2. Cutting in any sale or unit without the required advance payment would be considered a trespass.
3. Total payment must be paid in advance or according to the following schedule :
  - (a) Ten percent (10%) of the sale value must be paid within 21 days of the sale award.
  - (b) The 10% down payment will be credited towards the first unit cut.
  - (c) Payment for each of the following units must be made before cutting begins in that unit:

PAYMENT UNIT NUMBER	PERCENT OF TOTAL SALE VALUE
01	64.0%
02	36.0%
4. If no cutting takes place, the 10% down payment will not be refunded.
5. Operations on the contract issued will terminate on 04/15/2029.

## **SALE STATISTICS**

Volumes were calculated in cubic feet using the Michigan taper model. Cubic foot volume includes all wood inside bark for the product indicated. For display purposes, cubic feet were converted to cords and MBF using a simple conversion factor, e.g. 79 cubic feet per cord and 185 cubic feet per MBF. The cubic foot volumes are precise; the cords and MBF volumes are not. Cubic foot volume cannot be directly converted to cords or boards with precision.

## **SALE VOLUMES**

The total estimated sale volume may not equal the sum of the species/products due to the nature of statistical calculations associated with double sampling methodology.

VOLUME			STATISTICAL RANGE IN CORDS	
TOTAL CUBIC FEET	TOTAL CORDS	PERCENT ERROR	MINIMUM	MAXIMUM
181,164	2,293	15.80%	1,931	2,656

## VDU VOLUMES

A VDU is a Volume Determination Unit. Volumes and their associated statistics are calculated at the VDU level and summarized to the sale level. There is often a one to one relationship between a VDU and a Payment Unit, but not always, depending on the cruise design. Refer to the VDU TO PAYMENT UNIT table.

VDU	VOLUME		PERCENT ERROR	RANGE IN CORDS	
	TOTAL CUBIC FEET	TOTAL CORDS		MINIMUM	MAXIMUM
44	123,069	1,558	19.64%	1,252	1,864
52	58,095	735	27.00%	537	934
<b>TOTAL:</b>	<b>181,164</b>	<b>2,293</b>		<b>1,789</b>	<b>2,798</b>

## VDU TO PAYMENT UNIT

When a VDU is associated with more than one Payment Unit (PU), the VDU volumes are assigned to the PU based on acres of the VDU within the PU.

VDU	VDU ACRES	PU	PU ACRES
44	48.1	1	48.1
52	44.5	2	44.5
<b>TOTAL:</b>	<b>92.6</b>		<b>92.6</b>

## DESCRIPTION OF TIMBER BY PAYMENT UNIT (PU)

PU	MARKET GROUP	PRODUCT	QUANTITY	UNIT	ACRES	ADVERTISE PRICE
1	Basswood	Sawtimber	86.0	MBF	48.1	\$49,091.65
	Red Maple		1.8	MBF		
	Sugar Maple		80.6	MBF		
	B. T. Aspen	Pulpwood	264	Cords		
	Mixed Hardwood		801	Cords		
	Basswood		234	Cords		
	Beech		6	Cords		
	Ironwood		31	Cords		
	Red Maple		8	Cords		
	Sugar Maple		522	Cords		
	Red Pine		99	Cords		
2	Basswood	Sawtimber	16.6	MBF	44.5	\$27,560.60
	Sugar Maple		18.7	MBF		
	B. T. Aspen	Pulpwood	172	Cords		
	Mixed Hardwood		209	Cords		
	Basswood		42	Cords		
	Beech		41	Cords		
	Black Cherry		3	Cords		
	Ironwood		13	Cords		
	Sugar Maple		110	Cords		
	Red Pine		272	Cords		
	TOTAL:			203.7		
TOTAL:			1,817	Cords		



## **Sale Specific Conditions & Requirements**

**Sale Name: New Puppy Mix**

**Sale Number: 61-102-25 Seq#: 1**

### **1 - Sale Area**

#### **1.2 - Boundaries**

##### **1.2.1 - Painted Boundaries (9/19)**

The sale boundary and Payment Unit boundaries are marked and identified by blue and red paint. Exterior sale boundary lines against private property are marked with blue paint. Exterior sale boundary lines against state are marked with red paint. Retention patches are marked with red paint; no harvesting activities may occur within these areas. The painted boundary line trees are not Included Timber and are to be protected unless marked with orange paint.

### **2 - Timber Specifications**

#### **2.1 - Included Timber**

##### **2.1.1 - Clearcut Unit(s) with Unmerchantable Trees (6/14)**

Within Payment Unit(s) 1, cut all trees that are two (2) inches or more at DBH except do not cut any green marked trees. In addition to green marked trees, DO NOT CUT any sugar maple 8 inches in DBH or less.

##### **2.1.3 - Cut Tree Marked Unit(s) (12/08)**

Within Payment Unit(s) 2, all trees are designated for cutting when marked with orange paint above and below stump height, regardless of merchantability. In Addition to orange marked trees cut all beech, ironwood and aspen down to 2 inches in DBH.

#### **2.2 - Utilization**

##### **2.2.3 - Stump Heights (12/24)**

Stump heights within the Sale Area shall not exceed 12 inches for trees greater than 10 inches at DBH and four (4) inches for trees smaller than 10 inches at DBH.

### **3 - Payments**

#### **3.3 - Pre-measured Sales**

##### **3.3.4 - Dividing Payment Units (7/14)**

Payment Unit(s) may be divided at the request of the Purchaser and upon approval of the Unit Manager. Dividing Payment Units is a contract modification which requires a Timber Sale Contract Amendment. There will be only one division per Payment Unit.

#### **3.4 - Damaged Timber**

##### **3.4.1 - Damaged Timber (12/24)**

General Condition and Requirement 3.4 Damaged Timber, defines liquidated damages for undesignated live merchantable trees which are cut or injured.

In addition, extreme care should be taken in payment unit #1 to avoid damage to sugar maple 8 inches in DBH or less.

Within Payment unit #1, if more than 10% of the sugar maple ranged in size 1/4" to 8.0" DBH within a specified portion of the Sale Area are damaged, liquidated damages will be assessed at \$50 per tree for all sugar maple within the sale area.

No damage is acceptable to undesignated live merchantable trees. Within the Sale Area, if more than 5 % of trees (> 4.5" DBH) within a specified area of the sale are damaged, liquidated damages will be assessed for all trees damaged. Rates will be in accordance with General Condition and Requirement 3.4 Damaged Timber.

### **4 - Transportation**

#### **4.1 - Construction**

##### **4.1.3 - Slash and Earthen Piles (8/04)**

Piles or windrows of earth along roads and landings that have been widened or constructed shall be leveled. Slash from road maintenance or construction, including stumps, shall be dispersed throughout the sale.

#### 4.1.11 - Permits (2/12)

The Purchaser will secure any necessary County Road permits that may be required.

#### 4.1.12 - No New Roads (1/12)

No new roads will be permitted in any Payment Unit. All operations are limited to existing roads. Skid trails only will be allowed.

### 4.2 - Maintenance

#### 4.2.5 - Two Wheel Drive Condition (2/04)

All existing trail roads on and adjacent to the Sale Area must be passable by two-wheel drive traffic for the duration of the sale.

## 5 - Operations

### 5.1 - Notification

#### 5.1.1 - Pre-sale Conference (10/16)

A pre-sale conference on site between the Purchaser and Sale Administrator is required prior to beginning any operations to determine landing and road locations. The Unit Manager or his/her representative must be contacted at least 5 days in advance to schedule the conference.

#### 5.1.3 - Well Heads and Natural Gas Pipelines (11/15)

The Purchaser is responsible for contacting the gas or pipeline company 30 days prior to operating equipment in the vicinity of well heads or natural gas pipelines. Pipeline will need to be crossed / used for timber sale. Miss dig 811 will get purchaser in contact with pipeline company. Written or verbal permission is required before harvest operations begin and can be documented by timber sale administrator.

### 5.2 - Conduct of Operations

#### 5.2.1 - Slash

##### 5.2.1.8 - Slash Height (12/08)

No slash or tree tops may exceed 24 inches in height. This spec applies to payment unit #2

##### 5.2.1.11 - Slash for Reforestation (3/21)

To facilitate reforestation, Payment Unit(s)1 shall have tops stacked up on any maple or oak stump harvested. This is to prevent deer browse on stump sprouts. If maple or oak stumps are not present slash should be evenly distributed. Stumps shall be cut low to the ground per sale condition 2.2.3.

#### 5.2.3 - Operating Restrictions

##### 5.2.3.3 - Bark Slippage Restriction (3/09)

Within Payment Unit(s) 2, unless changed by written agreement, cutting and skidding are not permitted during the period of April 15 to July 15. This restriction is because of bark slippage.

#### 5.2.4 - Dead and Down Creation

##### 5.2.4.4 - Dead and Down Creation, Grouse (6/18)

To encourage grouse and other wildlife, in Payment Unit(s) 1, leave one, 12" diameter or larger log-length (8 foot minimum) piece on the ground for every 2 acres. These trees will be evenly scattered throughout the unit, preferably at least two chains from any roads, two-tracks, or trails open to vehicles. This can be an unmerchantable piece or a full tree.

##### 5.2.32 - Decking/Landing Restoration (9/13)

All decking and landing areas must have the surface area restored to a condition equal to or better than before. This is to

ensure the proper regeneration of the stand. Wood debris, chips and "cookies" from trimmings must be removed or scattered away from landing and loading areas and may not be windrowed on the edge.

#### 5.2.39 - ORV Trail/Route Protection (4/18)

The ORV trail or route and is shown on the Timber Sale Map. Do not cut trees or damage posts with yellow ORV markers. All stumps within 5 feet of the trail must be cut flush with the ground. Maintain a 20 foot wide slash, debris, and rut free zone daily using the ORV trail or route as the centerline. Do not run equipment down the ORV trail or route. Skidding across the trail or route may only occur in locations approved by the sale administrator.

#### 5.2.41 - Snowmobile Trail Protection (9/11)

The a snowmobile trail is shown on the Timber Sale Map. Do not cut or damage posts with orange trail markers or traffic control signs. If the trail is used, it must be maintained and restored to a condition equal to or better than before the sale. The road maintenance/restoration must be done prior to December 1. If the trail is used for hauling, it must be graded to the satisfaction of the Unit Manager or his/her representative prior to December 1. If the trail road is to be used for hauling during the snowmobile season, then a snow-covered base must be left on the trail. Maintain a 20-foot-wide slash, debris, and rut free zone daily using the snowmobile trail as the centerline. No decking of forest products will be permitted along the snowmobile trail. All stumps within 20 feet of the snowmobile trail must be cut at ground level.

### 5.4 - Soil Protection

#### 5.4.1 - Rutting Restriction, General (7/16)

Operations are to cease immediately if equipment and weather conditions result in rutting of roads and/or skid trails which is 12 inches or greater in depth and 50 feet in length. The Unit Manager or his/her representative may restrict hauling and/or skidding if ruts exceed the specified depth. With the Unit Manager or his/her representative's approval, the Purchaser may return to the area when the risk of rutting has decreased.

## 6 - Safety and Fire Prevention

### 6.2 - Signing

#### 6.2.1 - Road Posting (10/20)

The Purchaser is responsible for posting and maintaining caution signs on any county road or state two track prior to beginning operations. The road must be posted at appropriate distances from the sale area to warn of logging activity and truck traffic. Signs must be removed when harvest operations are suspended or completed. The Purchaser will provide these signs.

#### 6.2.2 - Snowmobile Trail Posting (10/20)

The Purchaser is responsible for posting and maintaining caution signs on snowmobile trail name prior to beginning operations during the snowmobile season (approximately December 1 to March 31). The trail must be posted at appropriate distances from the Sale Area to warn of logging activity and truck traffic. Signs must be removed when harvest operations are suspended or completed. The Purchaser will provide these signs.

#### 6.2.3 - Recreational Trail Posting (10/20)

The Purchaser is responsible for posting and maintaining caution signs on ORV Trail. (This trail is located in east end of PU2) prior to beginning operations. The trail must be posted at appropriate distances from the sale area to warn of logging activity and truck traffic at both ends of the trail. Signs must be removed when harvest operations are suspended or completed. The Purchaser will provide these signs.



**TIMBER SALE MAP**

This information provided by authority of Part 525, 1994 PA 451, as amended.

Sale Number  
**61-102-25**

Date  
**08/21/2025**

Forest Management Unit	County	Mapped By: Tom Peterson	Scale	Page	Of
Traverse City Mgt Unit	Kalkaska	Cruised By: Tom Peterson	1:15,840	1	1

Township	Range	Section(s) and
28N	05W	Subdivision(s) Sec. 11 SESW,SE; Sec. 12 S1/2SW; Sec. 14 NENW,NWNE;

**Cover Type**

A = Aspen	J = Jack Pine	O = Oak	U = Upland Brush
B = Paper Birch	K = Rock	P = Lowland Poplar	UM = Upland Mix Forest
C = Cedar	L = Lowland Brush	Q = Mixed Swamp Conifer	V = Bog or Marsh
D = Treed Bog	LM = Lowland Mix Forest	R = Red Pine	W = White Pine
E = Swamp Hardwoods	M = Maple, Beech, Birch	S = Black Spruce	X = Non Stocked
F = Spruce/Fir	MC = Mixed Conifer	T = Tamarack	Y = Sand
G = Grass	MD = Mixed Deciduous	Z = Water	
H = Hemlock	N = Marsh		

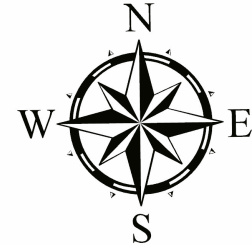
**Density**

0 = Non Stocked	5 = Pole Timber Medium
1 = Seedling Sapling Poor	6 = Pole Timber Well
2 = Seedling Sapling Medium	7 = Saw Timber Poor
3 = Seedling Sapling Well	8 = Saw Timber Medium
4 = Pole Timber Poor	9 = Saw Timber Well

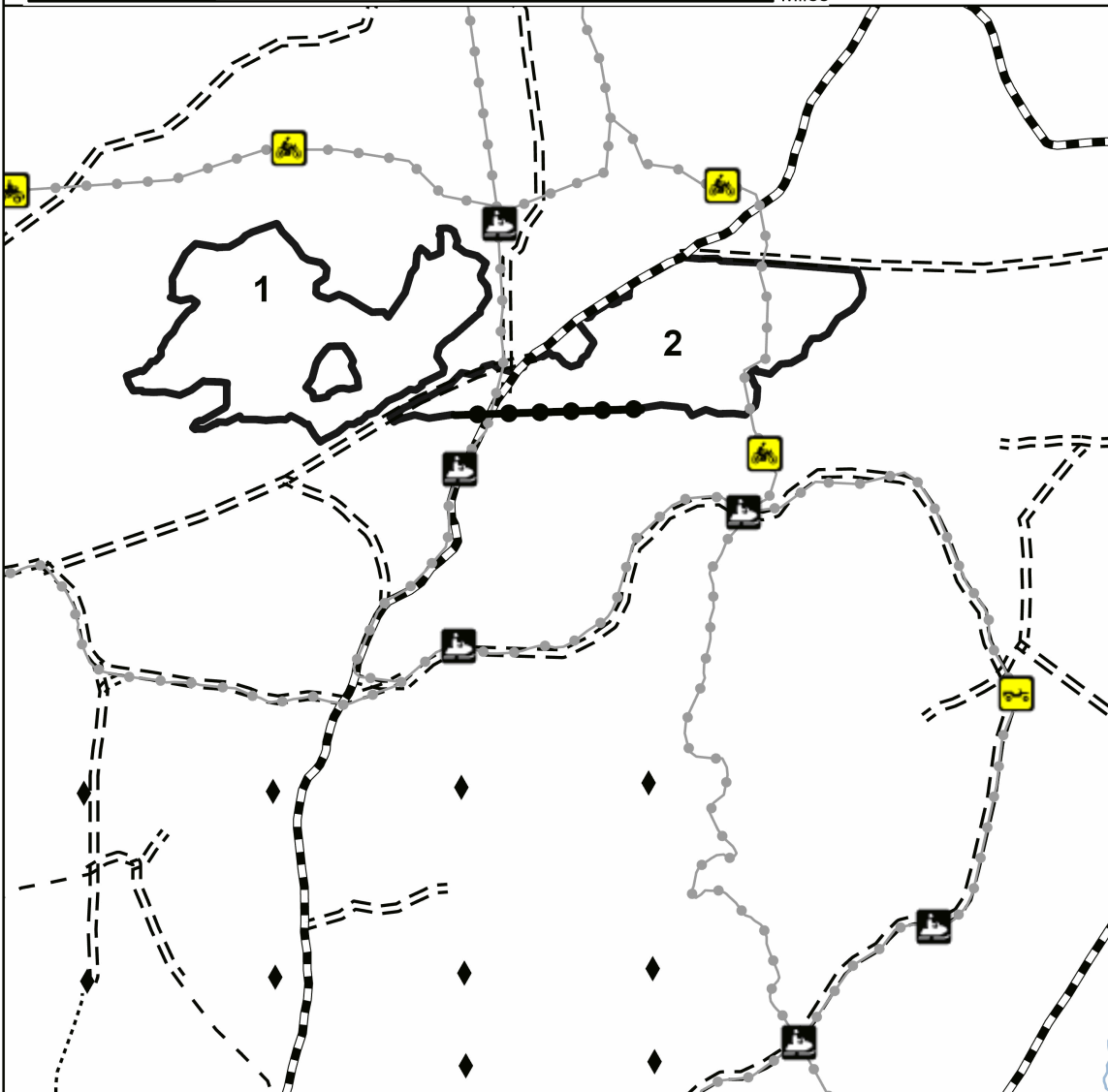
**PU # Acres**

1	48.1
2	44.5

**New Puppy Mix**  
**92.6 Acres**



0 0.25 0.5 1 Miles



**Legend**

- Payment Unit
- Private Line (Blue)
- Recreational Trail
- Primary Forest Road
- Forest Access Route
- Administrative Access Only
- Paved Road
- Government Gravel/Dirt
- Private Gravel/Dirt
- Field Grade Corner
- Survey Grade Corner

Use QR Code to open Map in App



## TIMBER SALE INFORMATION

### 26 Gap Hardwoods (61-103-25)

T28N, R05W, SEC. 10; T28N, R05W, SEC. 11.

Kalkaska County (Advertised Price \$34,535.45)

SALE NOTE: 99.1 - Unique Sale Condition - Harvest is gap harvest. Skidding between gaps is allowed. No roads will be allowed between gaps. See Timber Sale Map for direction of wood flow to landings. Skidding may exceed 1/2 a mile to landing. An additional 15% has been deducted from the minimum bid prices to reflect these requirements.

A recreation site such as a trail, pathway, or campground is within the sale area or the vicinity. Certain restrictions/specifications may be applicable including time restrictions.

A timber sale contract for this lump sum, sealed bid timber sale will be awarded to the responsible bidder offering the highest sealed bid price. All units of volume listed below were estimated using the Inventory Manager computer program and the new Michigan taper model. Bids must be at or above the following advertised price for each product and species:

<u>PRODUCTS &amp; SPECIES</u>	<u>ESTIMATED UNITS*</u>		<u>ADVERTISED PRICE</u>
Sawtimber			
Basswood	5.6	MBF	\$ 101.00 / MBF
Paper Birch	0.8	MBF	\$ 50.00 / MBF
Red Maple	39.9	MBF	\$ 82.00 / MBF
Red Oak	2.7	MBF	\$ 119.00 / MBF
Sugar Maple	58.5	MBF	\$ 189.00 / MBF
Yellow Birch	0.6	MBF	\$ 77.00 / MBF
Pulpwood			
Mixed Aspen	132	Cords	\$ 17.85 / Cord
Mixed Hardwood	917	Cords	\$ 14.25 / Cord
Red Pine	73	Cords	\$ 52.20 / Cord

\* The total volume is statistically estimated within plus (+) or minus (-) 16.62 percent. There are an estimated 1,376 cords on this timber sale, plus or minus 229 cords at the 95% confidence level. The estimated units are final and not subject to adjustment. Prospective bidders are urged to examine this timber and to make their own estimates of quantity and quality.

### **BOND AND PAYMENT SCHEDULE:**

1. A bond in the amount of \$1,727.00 to insure faithful performance of the conditions of the contract will be deposited by the successful bidder within 21 days of the sale award.
2. Cutting in any sale or unit without the required advance payment would be considered a trespass.
3. Total payment must be paid in advance or according to the following schedule:
  - (a) Ten percent (10%) of the sale value must be paid within 21 days of the sale award.
  - (b) The 10% down payment will be credited towards the first unit cut.
  - (c) Payment for each of the following units must be made before cutting begins in that unit:

<u>PAYMENT UNIT NUMBER</u>	<u>PERCENT OF TOTAL SALE VALUE</u>
01	26.5%
02	17.1%
03	20.3%
04	20.5%
05	15.6%

4. If no cutting takes place, the 10% down payment will not be refunded.
5. Operations on the contract issued will terminate on 04/15/2029.

### **SALE STATISTICS**

Volumes were calculated in cubic feet using the Michigan taper model. Cubic foot volume includes all wood inside bark for the product indicated. For display purposes, cubic feet were converted to cords and MBF using a simple conversion factor, e.g. 79 cubic feet per cord and 185 cubic feet per MBF. The cubic foot volumes are precise; the cords and MBF volumes are not. Cubic foot volume cannot be directly converted to cords or boards with precision.

SALE VOLUMES

The total estimated sale volume may not equal the sum of the species/products due to the nature of statistical calculations associated with double sampling methodology.

VOLUME			STATISTICAL RANGE IN CORDS	
TOTAL CUBIC FEET	TOTAL CORDS	PERCENT ERROR	MINIMUM	MAXIMUM
108,743	1,376	16.62%	1,148	1,605

VDU VOLUMES

A VDU is a Volume Determination Unit. Volumes and their associated statistics are calculated at the VDU level and summarized to the sale level. There is often a one to one relationship between a VDU and a Payment Unit, but not always, depending on the cruise design. Refer to the VDU TO PAYMENT UNIT table.

	VOLUME			RANGE IN CORDS	
VDU	TOTAL CUBIC FEET	TOTAL CORDS	PERCENT ERROR	MINIMUM	MAXIMUM
21	74,082	938	20.79%	743	1,133
37	34,662	439	28.02%	316	562
TOTAL:	108,743	1,376		1,059	1,694

VDU TO PAYMENT UNIT

When a VDU is associated with more than one Payment Unit (PU), the VDU volumes are assigned to the PU based on acres of the VDU within the PU.

VDU	VDU ACRES	PU	PU ACRES
21	30.6	1	12.7
		2	8.2
		3	9.7
37	14.3	4	8.1
		5	6.2
TOTAL:	44.9		44.9

**DESCRIPTION OF TIMBER BY PAYMENT UNIT (PU)**

PU	MARKET GROUP	PRODUCT	QUANTITY	UNIT	ACRES	ADVERTISE PRICE
1	Basswood	Sawtimber	2.3	MBF	12.7	\$9,150.50
	Paper Birch		0.3	MBF		
	Red Maple		13.4	MBF		
	Red Oak		1.1	MBF		
	Sugar Maple		12.1	MBF		
	Yellow Birch		0.2	MBF		
	Mixed Aspen	Pulpwood	29	Cords		
	<i>B. T. Aspen</i>		29	<i>Cords</i>		
	Mixed Hardwood		271	Cords		
	<i>Basswood</i>		10	<i>Cords</i>		
	<i>Beech</i>		52	<i>Cords</i>		
	<i>Black Cherry</i>		2	<i>Cords</i>		
	<i>Ironwood</i>		4	<i>Cords</i>		
	<i>Red Maple</i>		88	<i>Cords</i>		
	<i>Red Oak</i>		2	<i>Cords</i>		
	<i>Sugar Maple</i>		109	<i>Cords</i>		
	<i>Yellow Birch</i>		4	<i>Cords</i>		
	Red Pine		19	Cords		
2	Basswood	Sawtimber	1.5	MBF	8.2	\$5,907.10
	Paper Birch		0.2	MBF		
	Red Maple		8.7	MBF		
	Red Oak		0.7	MBF		
	Sugar Maple		7.8	MBF		
	Yellow Birch		0.2	MBF		
	Mixed Aspen	Pulpwood	19	Cords		
	<i>B. T. Aspen</i>		19	<i>Cords</i>		
	Mixed Hardwood		175	Cords		
	<i>Basswood</i>		6	<i>Cords</i>		
	<i>Beech</i>		34	<i>Cords</i>		
	<i>Black Cherry</i>		1	<i>Cords</i>		
	<i>Ironwood</i>		3	<i>Cords</i>		
	<i>Paper Birch</i>		1	<i>Cords</i>		
	<i>Red Maple</i>		57	<i>Cords</i>		
	<i>Red Oak</i>		1	<i>Cords</i>		
	<i>Sugar Maple</i>		70	<i>Cords</i>		
	<i>Yellow Birch</i>		2	<i>Cords</i>		
	Red Pine		12	Cords		
3	Basswood	Sawtimber	1.8	MBF	9.7	\$7,022.30
	Paper Birch		0.3	MBF		
	Red Maple		10.3	MBF		
	Red Oak		0.9	MBF		
	Sugar Maple		9.2	MBF		
	Yellow Birch		0.2	MBF		
	Mixed Aspen	Pulpwood	23	Cords		
	<i>B. T. Aspen</i>		23	<i>Cords</i>		
	Mixed Hardwood		209	Cords		
	<i>Basswood</i>		8	<i>Cords</i>		
	<i>Beech</i>		40	<i>Cords</i>		
	<i>Black Cherry</i>		2	<i>Cords</i>		
	<i>Ironwood</i>		3	<i>Cords</i>		
	<i>Paper Birch</i>		1	<i>Cords</i>		
	<i>Red Maple</i>		68	<i>Cords</i>		
	<i>Red Oak</i>		1	<i>Cords</i>		
	<i>Sugar Maple</i>		83	<i>Cords</i>		
	<i>Yellow Birch</i>		3	<i>Cords</i>		
	Red Pine		14	Cords		

**DESCRIPTION OF TIMBER BY PAYMENT UNIT (PU), CON'T**

PU	MARKET GROUP	PRODUCT	QUANTITY	UNIT	ACRES	ADVERTISE PRICE
4	Red Maple	Sawtimber	4.2	MBF	8.1	\$7,083.90
	Sugar Maple		16.7	MBF		
	Mixed Aspen	Pulpwood	35	Cords		
	B. T. Aspen		21	Cords		
	Quaking Aspen		14	Cords		
	Mixed Hardwood		149	Cords		
	Beech		11	Cords		
	Black Cherry		1	Cords		
	Ironwood		1	Cords		
	Red Maple		27	Cords		
	Sugar Maple		109	Cords		
Red Pine		16	Cords			
5	Red Maple	Sawtimber	3.3	MBF	6.2	\$5,371.65
	Sugar Maple		12.7	MBF		
	Mixed Aspen	Pulpwood	26	Cords		
	B. T. Aspen		16	Cords		
	Quaking Aspen		10	Cords		
	Mixed Hardwood		113	Cords		
	Beech		8	Cords		
	Ironwood		1	Cords		
	Red Maple		21	Cords		
	Sugar Maple		83	Cords		
	Red Pine		12	Cords		
TOTAL:			108.1	MBF		
TOTAL:			1,122	Cords		



## Sale Specific Conditions & Requirements

**Sale Name: 26 Gap Hardwoods**

**Sale Number: 61-103-25 Seq#: 1**

### 1 - Sale Area

#### 1.2 - Boundaries

##### 1.2.1 - Painted Boundaries (9/19)

The sale boundary and Payment Unit boundaries are marked and identified by blue and red paint. Exterior sale boundary lines against private property are marked with blue paint. Exterior sale boundary lines against state are marked with red paint. All gaps are marked with red paint. The painted boundary line trees are not Included Timber and are to be protected unless marked with orange paint. Skid Trails are marked with orange paint and will be used as skid trail to connect the gaps.

### 2 - Timber Specifications

#### 2.1 - Included Timber

##### 2.1.1 - Clearcut Unit(s) with Unmerchantable Trees (6/14)

Within Payment Unit(s) 1, 2, 3, 4, and 5, cut all trees that are two (1) inches or more at DBH. Skid trails are marked from gap to gap with orange paint. All trees marked with orange paint are included in timber sale.

#### 2.2 - Utilization

##### 2.2.3 - Stump Heights (12/24)

Stump heights within the Sale Area shall not exceed 12 inches for trees greater than 10 inches at DBH and four (4) inches for trees smaller than 10 inches at DBH. This is in order to facilitate planting operations.

##### 2.2.6 - Roundwood Operation Required (3/21)

The skidding of whole trees or tree segments with limbs attached is prohibited. All products must be produced as roundwood and forwarded to existing roads or landing areas in final product length.

### 3 - Payments

#### 3.4 - Damaged Timber

##### 3.4.1 - Damaged Timber (12/24)

General Condition and Requirement 3.4 Damaged Timber, defines liquidated damages for undesignated live merchantable trees which are cut or injured.

No damage is acceptable to undesignated live merchantable trees. Within the Sale Area, if more than 10 % of trees (> 4.5" DBH) within a specified area of the sale are damaged, liquidated damages will be assessed for all trees damaged. Rates will be in accordance with General Condition and Requirement 3.4 Damaged Timber.

### 4 - Transportation

#### 4.1 - Construction

##### 4.1.3 - Slash and Earthen Piles (8/04)

Piles or windrows of earth along roads and landings that have been widened or constructed shall be leveled. Slash from road maintenance or construction, including stumps, shall be dispersed throughout the sale.

##### 4.1.11 - Permits (2/12)

The Purchaser will secure any necessary county road permits that may be required.

##### 4.1.12 - No New Roads (1/12)

No new roads will be permitted in any Payment Unit. All operations are limited to existing roads. Skid trails only will be allowed. No road will be allowed between gaps. All wood must be skidded to designated landing.

#### 4.2 - Maintenance

##### 4.2.5 - Two Wheel Drive Condition (2/04)

All existing trail roads on and adjacent to the Sale Area must be passable by two-wheel drive traffic for the duration of the sale.

#### 4.4 - Access

##### 4.4.2 - Alternate route on private property (2/04)

It is the Purchaser's responsibility to obtain access across private land for any routes other than the route shown on the Timber Sale Map.

### 5 - Operations

#### 5.1 - Notification

##### 5.1.1 - Pre-sale Conference (10/25)

A pre-sale conference on site between the Purchaser and Sale Administrator is required prior to beginning any operations a Payment Unit to determine landing and road locations. The Unit Manager or his/her representative must be contacted at least 5 days in advance to schedule the conference.

#### 5.2 - Conduct of Operations

##### 5.2.1 - Slash

###### 5.2.1.11 - Slash for Reforestation (3/21)

Within the Sale Area or Payment Unit(s) 1, 2, 3, 4 and 5 chipping is encouraged as it is the most effective and efficient way to mitigate slash for reforestation. Other tactics to mitigate slash for site preparation would need to be approved by the Unit Manager or his/her representative. Liquidated damages may be assessed at \$250 per acre if it is determined that slash mitigation was inadequate and mastication is needed for the DNR to conduct site preparation for planting. See spec 5.2.1.13 for alternatives to chipping.

###### 5.2.1.13 - Dispose of Slash as Directed (12/05)

Slash is to be disposed of as directed by the Sale Administrator. With in Payment Units 1, 2, 3, 4, and 5 slash must be disposed of for post-harvest cultivation treatments. Producer has option of chipping slash, grinding down slash with processor so no top pieces are longer then 5 feet, or scattering slash across red line so it does not interfere with any follow up treatment.

##### 5.2.3 - Operating Restrictions

###### 5.2.3.3 - Bark Slippage Restriction (3/09)

Within Payment Unit(s) 1, 2, 3, 4 and 5, unless changed by written agreement, cutting and skidding are not permitted during the period of April 15 to July 15. This restriction is because of bark slippage.

###### 5.2.32 - Decking/Landing Restoration (9/13)

All decking and landing areas must have the surface area restored to a condition equal to or better than before. This is to ensure the proper regeneration of the stand. Wood debris, chips and "cookies" from trimmings must be removed or scattered away from landing and loading areas and may not be windrowed on the edge.

###### 5.2.39 - ORV Trail/Route Protection (4/18)

The ORV trail is shown on the Timber Sale Map. Do not cut trees or damage posts with yellow ORV markers. All stumps within 5 feet of the trail must be cut flush with the ground. Maintain a 20 foot wide slash, debris, and rut free zone daily using the ORV trail or route as the centerline. Do not run equipment down the ORV trail or route. Skidding across the trail or route may only occur in locations approved by the sale administrator.

#### 5.4 - Soil Protection

##### 5.4.1 - Rutting Restriction, General (7/16)

Operations are to cease immediately if equipment and weather conditions result in rutting of roads and/or skid trails which is 12 inches or greater in depth and 50 feet in length. The Unit Manager or his/her representative may restrict hauling and/or skidding if ruts exceed the specified depth. With the Unit Manager or his/her representative's approval, the Purchaser may return to the area when the risk of rutting has decreased.

## **6 - Safety and Fire Prevention**

### **6.2 - Signing**

#### **6.2.1 - Road Posting (10/20)**

The Purchaser is responsible for posting and maintaining caution signs on all county and state roads affected by timber sale prior to beginning operations. The road must be posted at appropriate distances from the sale area to warn of logging activity and truck traffic. Signs must be removed when harvest operations are suspended or completed. The Purchaser will provide these signs.

#### **6.2.3 - Recreational Trail Posting (10/20)**

The Purchaser is responsible for posting and maintaining caution signs on ORV Trail prior to beginning operations. The trail must be posted at appropriate distances from the sale area to warn of logging activity and truck traffic at both ends of the trail. Signs must be removed when harvest operations are suspended or completed. The Purchaser will provide these signs.

## **7 - Other Conditions**

### **7.3 - Contract Modifications**

#### **7.3.3 - Modification for Reforestation (8/05)**

When contractual work of Purchaser has been accepted for any Payment Unit identified on Sale Area Map, Payment Unit will be eliminated from the Sale Area on written notice so that reforestation operations can begin.

## **99 - Unique**

### **SKIP**

#### **99.1 - Unique Sale Condition (5/19)**

Skidding between gaps is allowed. No roads will be allowed between gaps. See Timber Sale Map for direction of wood flow to landings. Skidding may exceed 1/2 a mile to landing.

All wood in gaps must be cut to length and then skidded to landing.



**TIMBER SALE MAP**

This information provided by authority of Part 525, 1994 PA 451, as amended.

Sale Number  
**61-103-25**

Date  
**08/27/2025**

Forest Management Unit  
Traverse City Mgt Unit

County  
Kalkaska

Mapped By: Tom Peterson & Cory Luoto  
Cruised By: Tom Peterson & Steve Crigier

Scale  
**1:15,840**

Page  
**1**

Of  
**1**

Township 28N Range 05W Section(s) and Subdivision(s) Sec. 10 NE,N1/2SE,SWSE; Sec. 11 NW,NWNE,NWSW;

**Cover Type**

A = Aspen	J = Jack Pine	O = Oak	U = Upland Brush
B = Paper Birch	K = Rock	P = Lowland Poplar	UM = Upland Mix Forest
C = Cedar	L = Lowland Brush	Q = Mixed Swamp Conifer	V = Bog or Marsh
D = Treed Bog	LM = Lowland Mix Forest	R = Red Pine	W = White Pine
E = Swamp Hardwoods	M = Maple, Beech, Birch	S = Black Spruce	X = Non Stocked
F = Spruce/Fir	MC = Mixed Conifer	T = Tamarack	Y = Sand
G = Grass	MD = Mixed Deciduous	Z = Water	
H = Hemlock	N = Marsh		

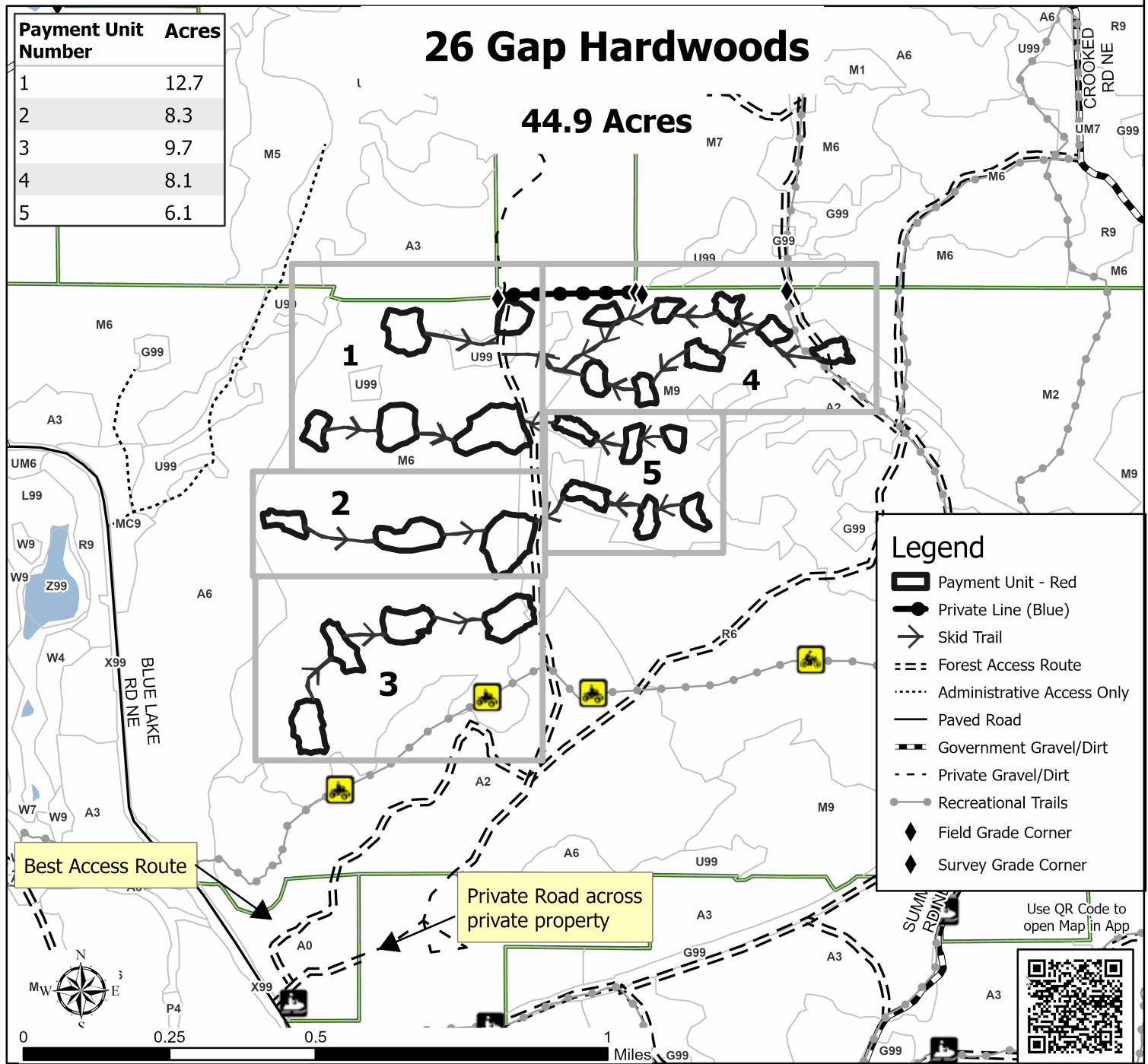
**Density**

0 = Non Stocked	5 = Pole Timber Medium
1 = Seedling Sapling Poor	6 = Pole Timber Well
2 = Seedling Sapling Medium	7 = Saw Timber Poor
3 = Seedling Sapling Well	8 = Saw Timber Medium
4 = Pole Timber Poor	9 = Saw Timber Well

Payment Unit Number	Acres
1	12.7
2	8.3
3	9.7
4	8.1
5	6.1

**26 Gap Hardwoods**

**44.9 Acres**



## TIMBER SALE INFORMATION

### Wow Oak Aspen (61-124-25)

T27N, R05W, SEC. 25; T27N, R05W, SEC. 35; T27N, R05W, SEC. 36.  
Kalkaska County (Advertised Price \$56,744.40)

A timber sale contract for this lump sum, sealed bid timber sale will be awarded to the responsible bidder offering the highest sealed bid price. All units of volume listed below were estimated using the Inventory Manager computer program and the new Michigan taper model. Bids must be at or above the following advertised price for each product and species:

<u>PRODUCTS &amp; SPECIES</u>	<u>ESTIMATED UNITS*</u>	<u>ADVERTISED PRICE</u>
Sawtimber		
Red Maple	1.4 MBF	\$ 103.00 / MBF
Red Oak	148.1 MBF	\$ 149.00 / MBF
Red Pine	9.3 MBF	\$ 139.00 / MBF
White Pine	1.0 MBF	\$ 78.00 / MBF
Pulpwood		
B. T. Aspen	803 Cords	\$ 22.30 / Cord
Black Cherry	8 Cords	\$ 17.80 / Cord
Red Maple	167 Cords	\$ 17.80 / Cord
Red Oak	381 Cords	\$ 27.90 / Cord
Red Pine	6 Cords	\$ 65.25 / Cord
White Pine	41 Cords	\$ 27.30 / Cord

\* The total volume is statistically estimated within plus (+) or minus (-) 20.20 percent. There are an estimated 1,779 cords on this timber sale, plus or minus 360 cords at the 95% confidence level. The estimated units are final and not subject to adjustment. Prospective bidders are urged to examine this timber and to make their own estimates of quantity and quality.

### **BOND AND PAYMENT SCHEDULE:**

1. A bond in the amount of \$2,837.00 to insure faithful performance of the conditions of the contract will be deposited by the successful bidder within 21 days of the sale award.
2. Cutting in any sale or unit without the required advance payment would be considered a trespass.
3. Total payment must be paid in advance or according to the following schedule :
  - (a) Ten percent (10%) of the sale value must be paid within 21 days of the sale award.
  - (b) The 10% down payment will be credited towards the first unit cut.

(c) Payment for each of the following units must be made before cutting begins in that unit:

<u>PAYMENT UNIT NUMBER</u>	<u>PERCENT OF TOTAL SALE VALUE</u>
01	1.1%
02	33.5%
03	5.1%
04	60.3%

4. If no cutting takes place, the 10% down payment will not be refunded.
5. Operations on the contract issued will terminate on 04/15/2029.

### **SALE STATISTICS**

Volumes were calculated in cubic feet using the Michigan taper model. Cubic foot volume includes all wood inside bark for the product indicated. For display purposes, cubic feet were converted to cords and MBF using a simple conversion factor, e.g. 79 cubic feet per cord and 185 cubic feet per MBF. The cubic foot volumes are precise; the cords and MBF volumes are not. Cubic foot volume cannot be directly converted to cords or boards with precision.

### **SALE VOLUMES**

The total estimated sale volume may not equal the sum of the species/products due to the nature of statistical calculations associated with double sampling methodology.

<u>VOLUME</u>			<u>STATISTICAL RANGE IN CORDS</u>	
<u>TOTAL CUBIC FEET</u>	<u>TOTAL CORDS</u>	<u>PERCENT ERROR</u>	<u>MINIMUM</u>	<u>MAXIMUM</u>
140,542	1,779	20.20%	1,419	2,139

**VDU VOLUMES**

A VDU is a Volume Determination Unit. Volumes and their associated statistics are calculated at the VDU level and summarized to the sale level. There is often a one to one relationship between a VDU and a Payment Unit, but not always, depending on the cruise design. Refer to the VDU TO PAYMENT UNIT table.

	VOLUME			RANGE IN CORDS	
VDU	TOTAL CUBIC FEET	TOTAL CORDS	PERCENT ERROR	MINIMUM	MAXIMUM
41	96,875	1,226	26.66%	899	1,553
49	14,139	179	46.76%	95	263
51	20,135	255	53.51%	119	391
55	2,089	26	63.62%	10	43
71	7,305	92	62.18%	35	150
<b>TOTAL:</b>	<b>140,542</b>	<b>1,779</b>		<b>1,158</b>	<b>2,400</b>

**VDU TO PAYMENT UNIT**

When a VDU is associated with more than one Payment Unit (PU), the VDU volumes are assigned to the PU based on acres of the VDU within the PU.

VDU	VDU ACRES	PU	PU ACRES
<b>TOTAL:</b>			

**DESCRIPTION OF TIMBER BY PAYMENT UNIT (PU)**

PU	MARKET GROUP	PRODUCT	QUANTITY	UNIT	ACRES	ADVERTISE PRICE
1	B. T. Aspen Black Cherry Red Oak White Pine	Pulpwood	12 8 3 4	Cords Cords Cords Cords	9.2	\$602.90
2	Red Oak Red Pine B. T. Aspen Red Maple Red Oak Red Pine	Sawtimber  Pulpwood	78.9 8.0 13 42 171 5	MBF MBF Cords Cords Cords Cords	18.2	\$19,002.75
3	Red Maple Red Oak Red Pine White Pine B. T. Aspen Red Maple Red Oak Red Pine White Pine	Sawtimber  Pulpwood	1.4 4.2 1.3 1.0 11 13 12 1 37	MBF MBF MBF MBF Cords Cords Cords Cords Cords	6.4	\$2,915.55
4	Red Oak B. T. Aspen Red Maple Red Oak	Sawtimber Pulpwood	65.0 767 112 195	MBF Cords Cords Cords	31.2	\$34,223.20
TOTAL:			159.8	MBF		
TOTAL:			1,406	Cords		

## **Sale Specific Conditions & Requirements**

**Sale Name: Wow Oak Aspen**

**Sale Number: 61-124-25 Seq#: 1**

### **1 - Sale Area**

#### **1.2 - Boundaries**

##### **1.2.1 - Painted Boundaries (9/19)**

The sale boundary and Payment Unit boundaries are marked and identified by red and yellow paint. Exterior sale boundary lines against state are marked with red paint. Interior Payment Unit boundaries are marked with yellow paint. Retention patches are marked with red paint; no harvesting activities may occur within these areas. The painted boundary line trees are not Included Timber and are to be protected. Yellow painted trees designating an interior Payment Unit boundary are only to be cut when all surrounding Payment Units have been paid.

### **2 - Timber Specifications**

#### **2.1 - Included Timber**

##### **2.1.1 - Clearcut Unit(s) with Unmerchantable Trees (6/14)**

Within Payment Unit(s) 1 and 4, cut all trees that are two (2) inches or more at DBH, except leave all white oak and green marked trees.

##### **2.1.5 - Overstory Removal Unit(s) (8/11)**

Within Payment Unit(s) 2 and 3, all species/ trees with DBH equal to or greater than 6 inches which meet minimum piece specifications in 2.2 Utilization, are designated for cutting except leave all white oak and green marked trees.

### **3 - Payments**

#### **3.3 - Pre-measured Sales**

##### **3.3.4 - Dividing Payment Units (7/14)**

Payment Unit(s) may be divided at the request of the Purchaser and upon approval of the Unit Manager. Dividing Payment Units is a contract modification which requires a Timber Sale Contract Amendment. There will be only one division per Payment Unit.

#### **3.4 - Damaged Timber**

##### **3.4.2 - Special Protection Trees (1/25)**

The Purchaser shall not cut live or dead special protection trees within cutting units or clearings. Special protection trees are legacy trees with a diameter of 26 inches and larger. If Purchaser's operations have cut or damaged special protection trees through carelessness, the Purchaser shall pay \$500.00 as fixed, agreed and liquidated damages for each special protection tree cut or damaged. Such payment does not constitute ownership of the undesignated timber.

### **4 - Transportation**

#### **4.1 - Construction**

##### **4.1.6 - Road Construction (4/24)**

Construction of new roads or improvements of existing roads shall be done in such a way as to minimize the environmental and visual impacts. Merchantable trees shall be cut and utilized unless otherwise directed. Non-merchantable trees shall be severed and laid flat on the ground. Slash shall be scattered, not left in windrows, and kept a minimum of 10 feet back from the road edge. Stumps shall be set upright, not left on edge, and be moved at least 10 feet away from the road edge.

### **5 - Operations**

#### **5.1 - Notification**

##### **5.1.1 - Pre-sale Conference (10/16)**

A pre-sale conference on site between the Purchaser and Sale Administrator is required prior to beginning any operations to determine landing and road locations. The Unit Manager or his/her representative must be contacted at least 5 days in advance to schedule the conference.

### 5.1.3 - Well Heads and Natural Gas Pipelines (11/15)

The Purchaser is responsible for contacting the gas or pipeline company prior to operating equipment in the vicinity of well heads or natural gas pipelines.

### 5.1.4 - Post-Sale Conference (10/16)

A post-sale conference on site between the Purchaser and sale administrator is required 5 days prior to the completion of active logging operations to determine clean-up and repair of landings, road edges, and the fulfillment of other contract specifications.

## 5.2 - Conduct of Operations

### 5.2.1 - Slash

#### 5.2.1.8 - Slash Height (12/08)

No slash or tree tops may exceed 24 inches in height.

### 5.2.2 - Hazard Trees/Snags

#### 5.2.2.1 - Den Trees (10/16)

Obvious hollow and/or den trees shall be protected and left standing unless they are a safety hazard.

### 5.2.3 - Operating Restrictions

#### 5.2.3.4 - Oak Wilt Restriction, No Exceptions (1/18)

Within Payment Unit(s) 1, 2, 3 and 4, cutting and skidding within the sale and brushing of access roads to the sale are not permitted during the period of April 15 to July 15. No exceptions will be granted. This is necessary to reduce the spread of oak wilt.

### 5.2.4 - Dead and Down Creation

#### 5.2.4.4 - Dead and Down Creation, Grouse (6/18)

To encourage grouse and other wildlife, in Payment Unit(s) 1 and 4, leave one, 12" diameter or larger log-length (8 foot minimum) piece on the ground for every two (2) acres. These trees will be evenly scattered throughout the Payment Unit, preferably at least two chains from any roads, two-tracks, or trails open to vehicles.

## 5.4 - Soil Protection

### 5.4.1 - Rutting Restriction, General (7/16)

Operations are to cease immediately if equipment and weather conditions result in rutting of roads and/or skid trails which are 12 inches or greater in depth and 50 feet in length. The Unit Manager or his/her representative may restrict hauling and/or skidding if ruts exceed the specified depth. With the Unit Manager or his/her representative's approval, the Purchaser may return to the area when the risk of rutting has decreased.

## 5.8 - Protection of Endangered Species

### 5.8.5 - Protection of Raptor Nests (3/13)

All trees with raptor nests will be protected if found during harvesting operations. Notification will be made to the Unit Manager or his/her representative who will notify the Wildlife Biologist so an onsite evaluation and recommendation can be made, if necessary.





**TIMBER SALE MAP**

This information provided by authority of Part 525, 1994 PA 451, as amended.

Sale Number  
**61-124-25**

Date  
**07/24/2025**

Forest Management Unit	County	Mapped By: Roell	Scale	Page	Of
Traverse City Mgt Unit	Kalkaska	Cruised By: Roell	1:15,840	1	1

Township	Range	Section(s) and Subdivision(s)
27N	05W	Sec. 25 S1/2SW; Sec. 35 NENW,N1/2NE; Sec. 36 N1/2NW;

**Cover Type**

A = Aspen	J = Jack Pine	O = Oak	U = Upland Brush
B = Paper Birch	K = Rock	P = Lowland Poplar	UM = Upland Mix Forest
C = Cedar	L = Lowland Brush	Q = Mixed Swamp Conifer	V = Bog or Marsh
D = Treed Bog	LM = Lowland Mix Forest	R = Red Pine	W = White Pine
E = Swamp Hardwoods	M = Maple, Beech, Birch	S = Black Spruce	X = Non Stocked
F = Spruce/Fir	MC = Mixed Conifer	T = Tamarack	Y = Sand
G = Grass	MD = Mixed Deciduous	Z = Water	
H = Hemlock	N = Marsh		

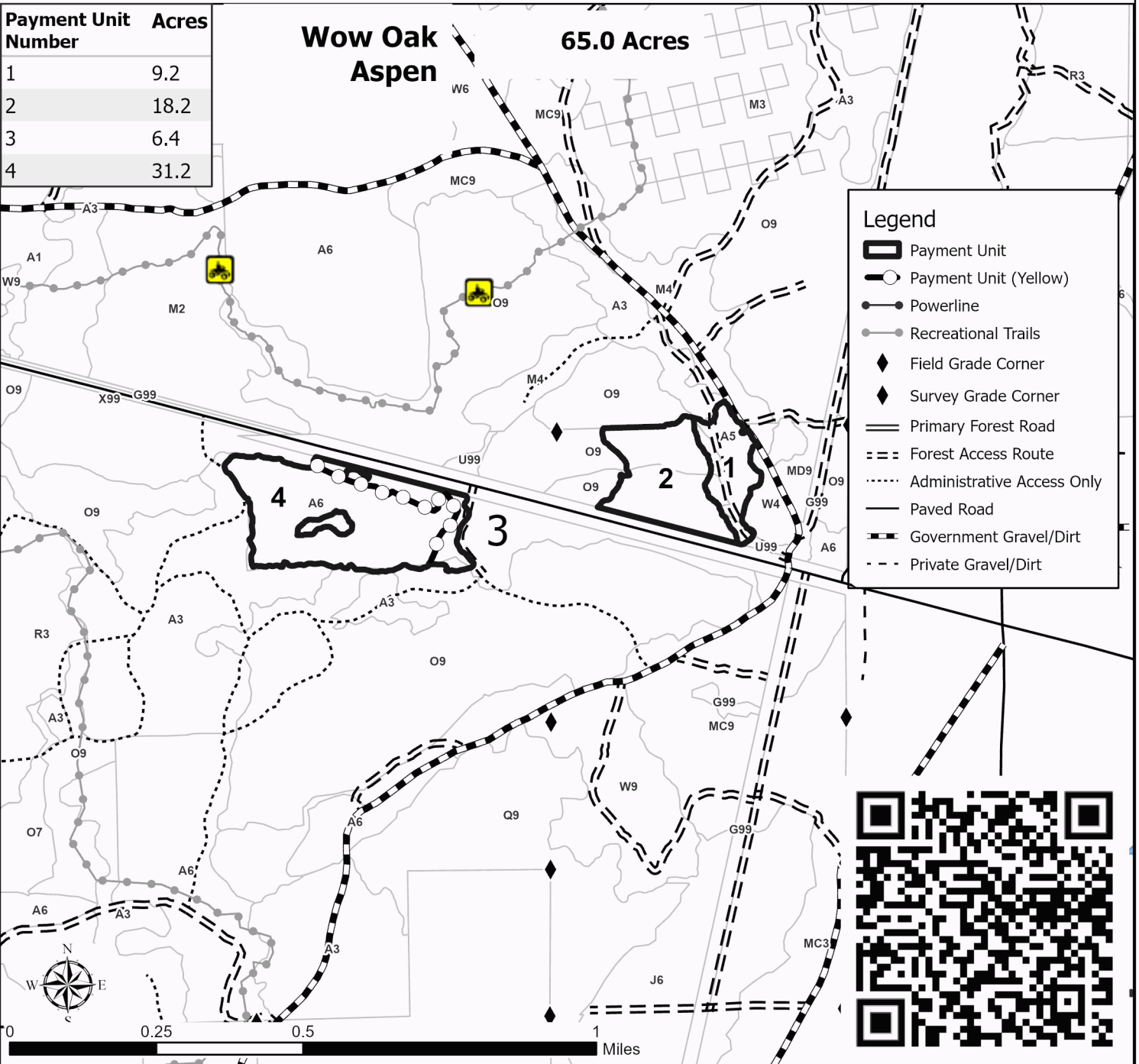
**Density**

0 = Non Stocked	5 = Pole Timber Medium
1 = Seedling Sapling Poor	6 = Pole Timber Well
2 = Seedling Sapling Medium	7 = Saw Timber Poor
3 = Seedling Sapling Well	8 = Saw Timber Medium
4 = Pole Timber Poor	9 = Saw Timber Well

Payment Unit Number	Acres
1	9.2
2	18.2
3	6.4
4	31.2

**Wow Oak  
Aspen**

**65.0 Acres**





## TIMBER SALE INFORMATION

Professional Hdwd (61-126-25)  
T27N, R05W, SEC. 34.  
Kalkaska County (Advertised Price \$11,271.40)

SALE NOTE: Bidders should note the higher-than-normal bond amount.

A timber sale contract for this lump sum, sealed bid timber sale will be awarded to the responsible bidder offering the highest sealed bid price. All units of volume listed below were estimated using the Inventory Manager computer program and the new Michigan taper model. Bids must be at or above the following advertised price for each product and species:

<u>PRODUCTS &amp; SPECIES</u>	<u>ESTIMATED UNITS*</u>	<u>ADVERTISED PRICE</u>
Sawtimber		
Beech	14.3 MBF	\$ 164.00 / MBF
Red Maple	19.2 MBF	\$ 103.00 / MBF
Sugar Maple	11.6 MBF	\$ 236.00 / MBF
Pulpwood		
B. T. Aspen	26 Cords	\$ 22.30 / Cord
Beech	57 Cords	\$ 17.80 / Cord
Red Maple	61 Cords	\$ 17.80 / Cord
Sugar Maple	86 Cords	\$ 17.80 / Cord

\* The total volume is statistically estimated within plus (+) or minus (-) 38.37 percent. There are an estimated 336 cords on this timber sale, plus or minus 129 cords at the 95% confidence level. The estimated units are final and not subject to adjustment. Prospective bidders are urged to examine this timber and to make their own estimates of quantity and quality.

### **BOND AND PAYMENT SCHEDULE:**

- A bond in the amount of \$5,000.00 to insure faithful performance of the conditions of the contract will be deposited by the successful bidder within 21 days of the sale award.
- Cutting in any sale or unit without the required advance payment would be considered a trespass.
- Total payment must be paid in advance or according to the following schedule :
  - Ten percent (10%) of the sale value must be paid within 21 days of the sale award.
  - The remainder is due before cutting begins.
  - Payment for each of the following units must be made before cutting begins in that unit:
 

PAYMENT UNIT NUMBER	PERCENT OF TOTAL SALE VALUE
01	100.0%
- If no cutting takes place, the 10% down payment will not be refunded.
- Operations on the contract issued will terminate on 04/14/2029.

### **SALE STATISTICS**

Volumes were calculated in cubic feet using the Michigan taper model. Cubic foot volume includes all wood inside bark for the product indicated. For display purposes, cubic feet were converted to cords and MBF using a simple conversion factor, e.g. 79 cubic feet per cord and 185 cubic feet per MBF. The cubic foot volumes are precise; the cords and MBF volumes are not. Cubic foot volume cannot be directly converted to cords or boards with precision.

### **SALE VOLUMES**

The total estimated sale volume may not equal the sum of the species/products due to the nature of statistical calculations associated with double sampling methodology.

VOLUME		STATISTICAL RANGE IN CORDS		
TOTAL CUBIC FEET	TOTAL CORDS	PERCENT ERROR	MINIMUM	MAXIMUM
26,507	336	38.37%	207	464

VDU VOLUMES

A VDU is a Volume Determination Unit. Volumes and their associated statistics are calculated at the VDU level and summarized to the sale level. There is often a one to one relationship between a VDU and a Payment Unit, but not always, depending on the cruise design. Refer to the VDU TO PAYMENT UNIT table.

	VOLUME			RANGE IN CORDS	
VDU	TOTAL CUBIC FEET	TOTAL CORDS	PERCENT ERROR	MINIMUM	MAXIMUM
10	26,507	336	38.37%	207	464
TOTAL:	26,507	336		207	464

VDU TO PAYMENT UNIT

When a VDU is associated with more than one Payment Unit (PU), the VDU volumes are assigned to the PU based on acres of the VDU within the PU.

VDU	VDU ACRES	PU	PU ACRES
TOTAL:			

DESCRIPTION OF TIMBER BY PAYMENT UNIT (PU)

PU	MARKET GROUP	PRODUCT	QUANTITY	UNIT	ACRES	ADVERTISE PRICE
1	Beech	Sawtimber	14.3	MBF	19.4	\$11,271.40
	Red Maple		19.2	MBF		
	Sugar Maple		11.6	MBF		
	B. T. Aspen	Pulpwood	26	Cords		
	Beech		57	Cords		
	Red Maple		61	Cords		
	Sugar Maple		86	Cords		
	TOTAL:			45.1		
TOTAL:			230	Cords		

## **Sale Specific Conditions & Requirements**

**Sale Name: Professional Hdwd**

**Sale Number: 61-126-25 Seq#: 1**

### **1 - Sale Area**

#### **1.2 - Boundaries**

##### **1.2.1 - Painted Boundaries (9/19)**

The sale boundary and Payment Unit boundaries are marked and identified by blue and red paint. Exterior sale boundary lines against private property are marked with blue paint. Exterior sale boundary lines against state are marked with red paint. The painted boundary line trees are not Included Timber and are to be protected unless marked with orange paint.

### **2 - Timber Specifications**

#### **2.1 - Included Timber**

##### **2.1.3 - Cut Tree Marked Unit(s) (12/08)**

Within Payment Unit(s) 1, all trees are designated for cutting when marked with orange paint above and below stump height, regardless of merchantability. In addition, cut all aspen, beech and iron wood.

### **4 - Transportation**

#### **4.1 - Construction**

##### **4.1.6 - Road Construction (4/24)**

Construction of new roads or improvements of existing roads shall be done in such a way as to minimize the environmental and visual impacts. Merchantable trees shall be cut and utilized unless otherwise directed. Non-merchantable trees shall be severed and laid flat on the ground. Slash shall be scattered, not left in windrows, and kept a minimum of 10 feet back from the road edge. Stumps shall be set upright, not left on edge, and be moved at least 10 feet away from the road edge.

### **5 - Operations**

#### **5.1 - Notification**

##### **5.1.1 - Pre-sale Conference (10/25)**

A pre-sale conference on site between the Purchaser and Sale Administrator is required prior to beginning any operations a Payment Unit to determine landing and road locations. The Unit Manager or his/her representative must be contacted at least 10 days in advance to schedule the conference.

##### **5.1.4 - Post-Sale Conference (10/16)**

A post-sale conference on site between the Purchaser and sale administrator is required 5 days prior to the completion of active logging operations to determine clean-up and repair of landings, road edges, and the fulfillment of other contract specifications.

#### **5.2 - Conduct of Operations**

##### **5.2.1 - Slash**

###### **5.2.1.8 - Slash Height (12/08)**

No slash or tree tops may exceed 24 inches in height.

##### **5.2.2 - Hazard Trees/Snags**

###### **5.2.2.1 - Den Trees (10/16)**

Obvious hollow and/or den trees shall be protected and left standing unless they are a safety hazard.

##### **5.2.3 - Operating Restrictions**

###### **5.2.3.3 - Bark Slippage Restriction (3/09)**

Within Payment Unit(s) 1, unless changed by written agreement, cutting and skidding are not permitted during the period of April 15 to July 15. This restriction is because of bark slippage.

#### 5.2.3.4 - Oak Wilt Restriction, No Exceptions (1/18)

Within Payment Unit(s) 1, cutting and skidding within the sale and brushing of access roads to the sale are not permitted during the period of April 15 to July 15. No exceptions will be granted. This is necessary to reduce the spread of oak wilt.

#### 5.2.16 - Equipment Recommended (11/18)

Within Payment Unit(s) 1, it is recommended that all products are produced as roundwood and forwarded to existing roads or landing areas in final product length. This is to prevent damage to the residual trees within the harvest units.

### 5.4 - Soil Protection

#### 5.4.1 - Rutting Restriction, General (7/16)

Operations are to cease immediately if equipment and weather conditions result in rutting of roads and/or skid trails which are 12 inches or greater in depth and 50 feet in length. The Unit Manager or his/her representative may restrict hauling and/or skidding if ruts exceed the specified depth. With the Unit Manager or his/her representative's approval, the Purchaser may return to the area when the risk of rutting has decreased.

### 5.8 - Protection of Endangered Species

#### 5.8.5 - Protection of Raptor Nests (3/13)

All trees with raptor nests will be protected if found during harvesting operations. Notification will be made to the Unit Manager or his/her representative who will notify the Wildlife Biologist so an onsite evaluation and recommendation can be made, if necessary.



**TIMBER SALE MAP**

This information provided by authority of Part 525, 1994 PA 451, as amended.

Sale Number  
**61-126-25**

Date  
**09/23/2025**

Forest Management Unit	County	Mapped By: Roell	Scale	Page	Of
Traverse City Mgt Unit	Kalkaska	Cruised By: Roell	1:10,000	1	1

Township	Range	Section(s) and Subdivision(s)
27N	05W	Sec. 34 W1/2SW;

**Cover Type**

A = Aspen	J = Jack Pine	O = Oak	U = Upland Brush
B = Paper Birch	K = Rock	P = Lowland Poplar	UM = Upland Mix Forest
C = Cedar	L = Lowland Brush	Q = Mixed Swamp Conifer	V = Bog or Marsh
D = Treed Bog	LM = Lowland Mix Forest	R = Red Pine	W = White Pine
E = Swamp Hardwoods	M = Maple, Beech, Birch	S = Black Spruce	X = Non Stocked
F = Spruce/Fir	MC = Mixed Conifer	T = Tamarack	Y = Sand
G = Grass	MD = Mixed Deciduous	Z = Water	
H = Hemlock	N = Marsh		

**Density**

0 = Non Stocked	5 = Pole Timber Medium
1 = Seedling Sapling Poor	6 = Pole Timber Well
2 = Seedling Sapling Medium	7 = Saw Timber Poor
3 = Seedling Sapling Well	8 = Saw Timber Medium
4 = Pole Timber Poor	9 = Saw Timber Well

Payment Unit Number	Acres
1	19.4

**Professional Hdwd**

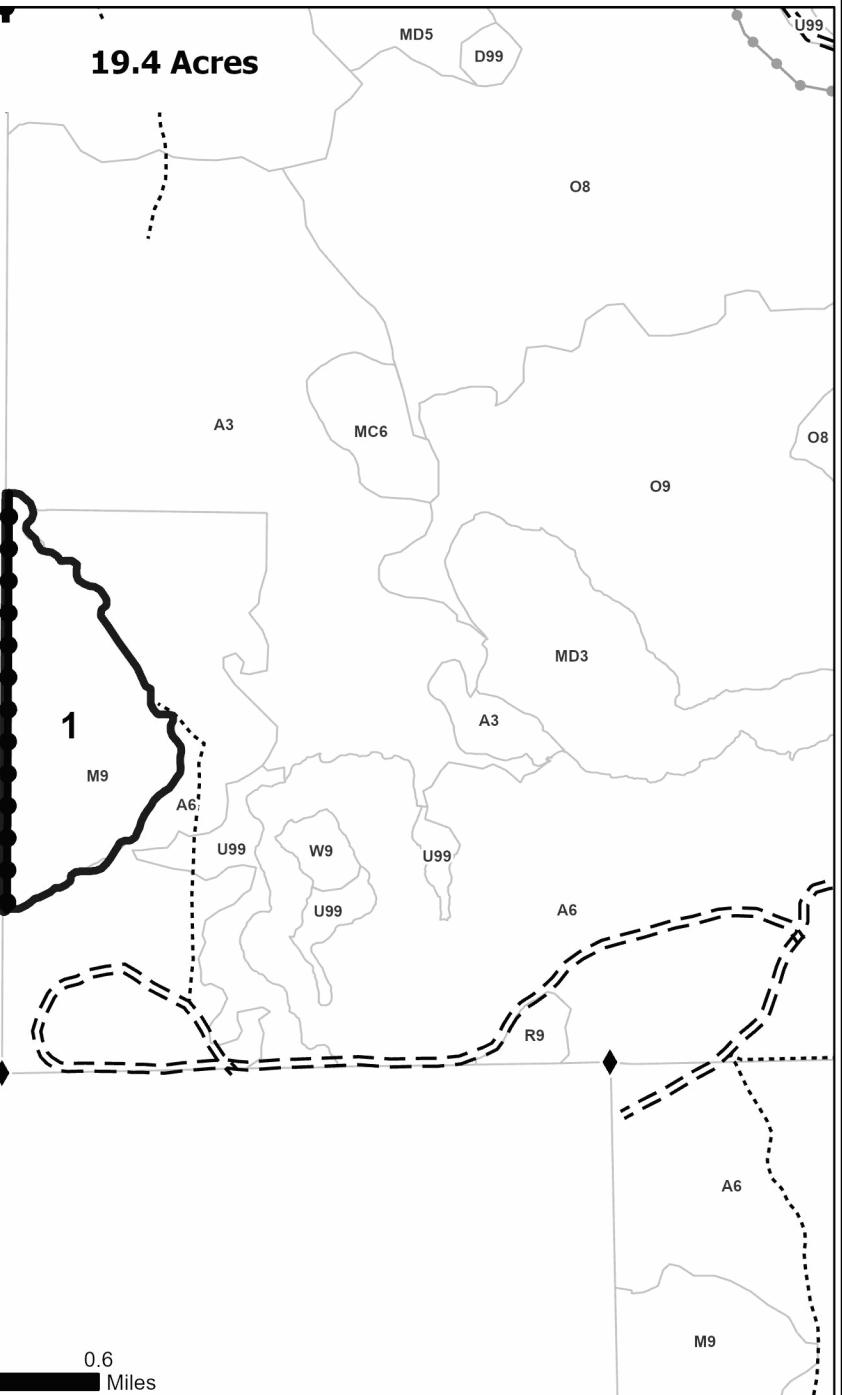
**19.4 Acres**

**Legend**

- Payment Unit
- Private Line (Blue)
- Recreational Trails
- Survey Grade Corner
- Primary Forest Road
- Forest Access Route
- Administrative Access Only
- Paved Road
- Government Gravel/Dirt
- Private Gravel/Dirt



0 0.15 0.3 0.6 Miles







## TIMBER SALE INFORMATION

### Slew Foot Mix (61-127-25)

T25N, R05W, SEC. 16; T25N, R05W, SEC. 17; T25N, R05W, SEC. 9.  
Kalkaska County (Advertised Price \$140,250.40)

A timber sale contract for this lump sum, sealed bid timber sale will be awarded to the responsible bidder offering the highest sealed bid price. All units of volume listed below were estimated using the Inventory Manager computer program and the new Michigan taper model. Bids must be at or above the following advertised price for each product and species:

<u>PRODUCTS &amp; SPECIES</u>	<u>ESTIMATED UNITS*</u>		<u>ADVERTISED PRICE</u>
Sawtimber			
Red Maple	1.6	MBF	\$ 103.00 / MBF
Red Oak	128.5	MBF	\$ 149.00 / MBF
Red Pine	198.2	MBF	\$ 139.00 / MBF
White Oak	84.2	MBF	\$ 87.00 / MBF
White Pine	111.3	MBF	\$ 78.00 / MBF
Pulpwood			
B. T. Aspen	964	Cords	\$ 22.30 / Cord
Black Cherry	60	Cords	\$ 17.80 / Cord
Jack Pine	10	Cords	\$ 13.90 / Cord
Paper Birch	18	Cords	\$ 28.75 / Cord
Quaking Aspen	328	Cords	\$ 22.30 / Cord
Red Maple	464	Cords	\$ 17.80 / Cord
Red Oak	525	Cords	\$ 27.90 / Cord
Red Pine	144	Cords	\$ 65.25 / Cord
White Oak	261	Cords	\$ 27.90 / Cord
White Pine	266	Cords	\$ 27.30 / Cord

\* The total volume is statistically estimated within plus (+) or minus (-) 13.55 percent. There are an estimated 4,266 cords on this timber sale, plus or minus 578 cords at the 95% confidence level. The estimated units are final and not subject to adjustment. Prospective bidders are urged to examine this timber and to make their own estimates of quantity and quality.

### **BOND AND PAYMENT SCHEDULE:**

- A bond in the amount of \$7,013.00 to insure faithful performance of the conditions of the contract will be deposited by the successful bidder within 21 days of the sale award.
- Cutting in any sale or unit without the required advance payment would be considered a trespass.
- Total payment must be paid in advance or according to the following schedule :
  - Ten percent (10%) of the sale value must be paid within 21 days of the sale award.
  - The 10% down payment will be credited towards the first unit cut.
  - Payment for each of the following units must be made before cutting begins in that unit:
 

PAYMENT UNIT NUMBER	PERCENT OF TOTAL SALE VALUE
01	19.2%
02	80.8%
- If no cutting takes place, the 10% down payment will not be refunded.
- Operations on the contract issued will terminate on 04/15/2029.

### **SALE STATISTICS**

Volumes were calculated in cubic feet using the Michigan taper model. Cubic foot volume includes all wood inside bark for the product indicated. For display purposes, cubic feet were converted to cords and MBF using a simple conversion factor, e.g. 79 cubic feet per cord and 185 cubic feet per MBF. The cubic foot volumes are precise; the cords and MBF volumes are not. Cubic foot volume cannot be directly converted to cords or boards with precision.

### **SALE VOLUMES**

The total estimated sale volume may not equal the sum of the species/products due to the nature of statistical calculations associated with double sampling methodology.

VOLUME			STATISTICAL RANGE IN CORDS	
TOTAL CUBIC FEET	TOTAL CORDS	PERCENT ERROR	MINIMUM	MAXIMUM
337,027	4,266	13.55%	3,688	4,845

VDU VOLUMES

A VDU is a Volume Determination Unit. Volumes and their associated statistics are calculated at the VDU level and summarized to the sale level. There is often a one to one relationship between a VDU and a Payment Unit, but not always, depending on the cruise design. Refer to the VDU TO PAYMENT UNIT table.

	VOLUME			RANGE IN CORDS	
VDU	TOTAL CUBIC FEET	TOTAL CORDS	PERCENT ERROR	MINIMUM	MAXIMUM
37	97,279	1,231	29.98%	862	1,601
45	121,835	1,542	17.66%	1,270	1,814
49	32,730	414	45.18%	227	601
50	85,183	1,078	29.88%	756	1,400
TOTAL:	337,027	4,266		3,115	5,417

VDU TO PAYMENT UNIT

When a VDU is associated with more than one Payment Unit (PU), the VDU volumes are assigned to the PU based on acres of the VDU within the PU.

VDU	VDU ACRES	PU	PU ACRES
TOTAL:			

DESCRIPTION OF TIMBER BY PAYMENT UNIT (PU)

PU	MARKET GROUP	PRODUCT	QUANTITY	UNIT	ACRES	ADVERTISE PRICE				
1	B. T. Aspen	Pulpwood	581	Cords	51.6	\$26,908.35				
	Black Cherry		60	Cords						
	Jack Pine		10	Cords						
	Paper Birch		9	Cords						
	Quaking Aspen		328	Cords						
	Red Maple		158	Cords						
	Red Oak		65	Cords						
	White Pine		20	Cords						
2	Red Maple	Sawtimber	1.6	MBF	100.5	\$113,342.05				
	Red Oak		128.5	MBF						
	Red Pine		198.2	MBF						
	White Oak		84.2	MBF						
	White Pine		111.3	MBF						
	B. T. Aspen	Pulpwood	383	Cords						
	Paper Birch		9	Cords						
	Red Maple		306	Cords						
	Red Oak		460	Cords						
	Red Pine		144	Cords						
	White Oak		261	Cords						
	White Pine		246	Cords						
	TOTAL:			523.8			MBF			
	TOTAL:			3,040			Cords			

## **Sale Specific Conditions & Requirements**

**Sale Name: Slew Foot Mix**

**Sale Number: 61-127-25 Seq#: 1**

### **1 - Sale Area**

#### **1.2 - Boundaries**

##### **1.2.1 - Painted Boundaries (9/19)**

The sale boundary and Payment Unit boundaries are marked and identified by red paint. Exterior sale boundary lines against state are marked with red paint. Retention patches are marked with red paint; no harvesting activities may occur within these areas. The painted boundary line trees are not Included Timber and are to be protected.

### **2 - Timber Specifications**

#### **2.1 - Included Timber**

##### **2.1.1 - Clearcut Unit(s) with Unmerchantable Trees (6/14)**

Within Payment Unit(s) 1, cut all trees that are two (2) inches or more at DBH, except do not cut white oak or green marked trees.

##### **2.1.5 - Overstory Removal Unit(s) (8/11)**

Within Payment Unit(s) 2, all trees with DBH equal to or greater than 6 inches which meet minimum piece specifications in 2.2 Utilization, are designated for cutting, except do not cut green marked trees or legacy trees.

### **3 - Payments**

#### **3.3 - Pre-measured Sales**

##### **3.3.4 - Dividing Payment Units (7/14)**

Payment Unit(s) may be divided at the request of the Purchaser and upon approval of the Unit Manager. Dividing Payment Units is a contract modification which requires a Timber Sale Contract Amendment. There will be only one division per Payment Unit.

#### **3.4 - Damaged Timber**

##### **3.4.2 - Special Protection Trees (1/25)**

The Purchaser shall not cut live or dead special protection trees within cutting units or clearings. Special protection trees are legacy trees with a diameter of 26 inches and larger. If Purchaser's operations have cut or damaged special protection trees through carelessness, the Purchaser shall pay \$500.00 as fixed, agreed and liquidated damages for each special protection tree cut or damaged. Such payment does not constitute ownership of the undesignated timber.

### **4 - Transportation**

#### **4.1 - Construction**

##### **4.1.6 - Road Construction (4/24)**

Construction of new roads or improvements of existing roads shall be done in such a way as to minimize the environmental and visual impacts. Merchantable trees shall be cut and utilized unless otherwise directed. Non-merchantable trees shall be severed and laid flat on the ground. Slash shall be scattered, not left in windrows, and kept a minimum of 10 feet back from the road edge. Stumps shall be set upright, not left on edge, and be moved at least 10 feet away from the road edge.

### **5 - Operations**

#### **5.1 - Notification**

##### **5.1.1 - Pre-sale Conference (10/25)**

A pre-sale conference on site between the Purchaser and Sale Administrator is required prior to beginning any operations in a Payment Unit to determine landing and road locations. The Unit Manager or his/her representative must be contacted at least 10 days in advance to schedule the conference.

##### **5.1.4 - Post-Sale Conference (10/16)**

A post-sale conference on site between the Purchaser and sale administrator is required 5 days prior to the completion of active logging operations to determine clean-up and repair of landings, road edges, and the fulfillment of other contract specifications.

## 5.2 - Conduct of Operations

### 5.2.1 - Slash

#### 5.2.1.8 - Slash Height (12/08)

No slash may exceed 24 inches in height.

### 5.2.2 - Hazard Trees/Snags

#### 5.2.2.1 - Den Trees (10/16)

Obvious hollow and/or den trees shall be protected and left standing unless they are a safety hazard.

### 5.2.3 - Operating Restrictions

#### 5.2.3.4 - Oak Wilt Restriction, No Exceptions (1/18)

Within Payment Unit(s) 1 and 2, cutting and skidding within the sale and brushing of access roads to the sale are not permitted during the period of April 15 to July 15. No exceptions will be granted. This is necessary to reduce the spread of oak wilt.

### 5.2.4 - Dead and Down Creation

#### 5.2.4.4 - Dead and Down Creation, Grouse (6/18)

To encourage grouse and other wildlife, in Payment Unit(s) 1, leave one, 12" diameter or larger log-length (8 foot minimum) piece on the ground for every two (2) acres. These trees will be evenly scattered throughout the Payment Unit, preferably at least two chains from any roads, two-tracks, or trails open to vehicles.

## 5.4 - Soil Protection

### 5.4.1 - Rutting Restriction, General (7/16)

Operations are to cease immediately if equipment and weather conditions result in rutting of roads and/or skid trails which are 12 inches or greater in depth and 50 feet in length. The Unit Manager or his/her representative may restrict hauling and/or skidding if ruts exceed the specified depth. With the Unit Manager or his/her representative's approval, the Purchaser may return to the area when the risk of rutting has decreased.

## 5.8 - Protection of Endangered Species

### 5.8.5 - Protection of Raptor Nests (3/13)

All trees with raptor nests will be protected if found during harvesting operations. Notification will be made to the Unit Manager or his/her representative who will notify the Wildlife Biologist so an onsite evaluation and recommendation can be made, if necessary.



**TIMBER SALE MAP**

This information provided by authority of Part 525, 1994 PA 451, as amended.

Sale Number  
**61-127-25**

Date  
**08/19/2025**

Forest Management Unit	County	Mapped By: Roell	Scale	Page	Of
Traverse City Mgt Unit	Kalkaska	Cruised By: Roell	1:15,840	1	1

Township	Range	Section(s) and Subdivision(s)
25N	05W	Sec. 16 W1/2NW,NE,NWSW; Sec. 17 SENE,NESE; Sec. 9 SESE;

**Cover Type**

A = Aspen	J = Jack Pine	O = Oak	U = Upland Brush
B = Paper Birch	K = Rock	P = Lowland Poplar	UM = Upland Mix Forest
C = Cedar	L = Lowland Brush	Q = Mixed Swamp Conifer	V = Bog or Marsh
D = Treed Bog	LM = Lowland Mix Forest	R = Red Pine	W = White Pine
E = Swamp Hardwoods	M = Maple, Beech, Birch	S = Black Spruce	X = Non Stocked
F = Spruce/Fir	MC = Mixed Conifer	T = Tamarack	Y = Sand
G = Grass	MD = Mixed Deciduous		Z = Water
H = Hemlock	N = Marsh		

**Density**

0 = Non Stocked	5 = Pole Timber Medium
1 = Seedling Sapling Poor	6 = Pole Timber Well
2 = Seedling Sapling Medium	7 = Saw Timber Poor
3 = Seedling Sapling Well	8 = Saw Timber Medium
4 = Pole Timber Poor	9 = Saw Timber Well

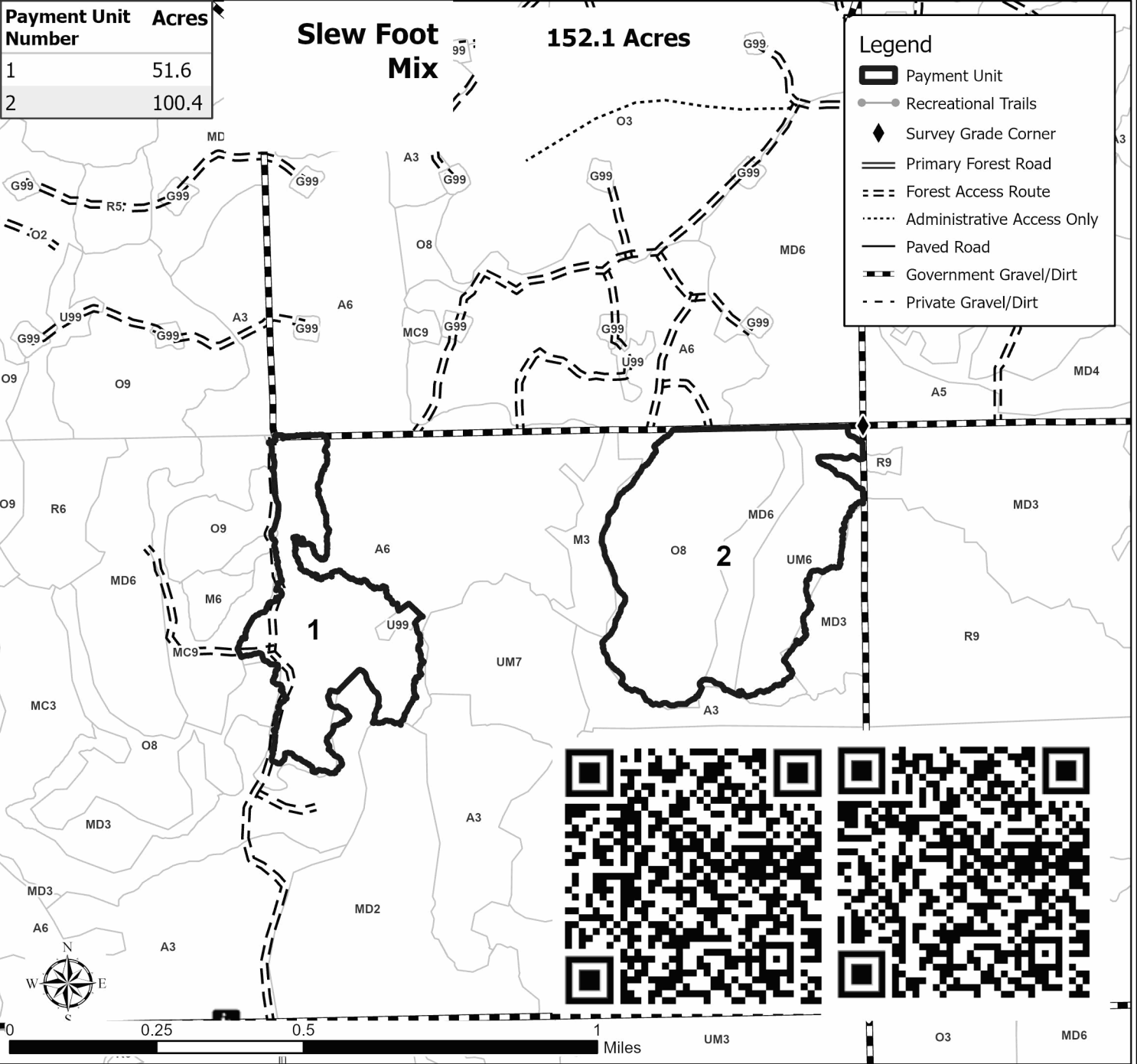
Payment Unit Number	Acres
1	51.6
2	100.4

**Slew Foot Mix**

**152.1 Acres**

**Legend**

	Payment Unit
	Recreational Trails
	Survey Grade Corner
	Primary Forest Road
	Forest Access Route
	Administrative Access Only
	Paved Road
	Government Gravel/Dirt
	Private Gravel/Dirt





## TIMBER SALE INFORMATION

### Yellow Brick Road Pine (61-132-25)

T26N, R05W, SEC. 10; T26N, R05W, SEC. 15; T26N, R05W, SEC. 16; T26N, R05W, SEC. 21; T26N, R05W, SEC. 9.  
Kalkaska County (Advertised Price \$296,290.95)

**SALE NOTE:** A recreation site such as a trail, pathway, or campground is within the sale area or the vicinity. Certain restrictions/specifications may be applicable including time restrictions.

A timber sale contract for this lump sum, sealed bid timber sale will be awarded to the responsible bidder offering the highest sealed bid price. All units of volume listed below were estimated using the Inventory Manager computer program and the new Michigan taper model. Bids must be at or above the following advertised price for each product and species:

<u>PRODUCTS &amp; SPECIES</u>	<u>ESTIMATED UNITS*</u>	<u>ADVERTISED PRICE</u>
Sawtimber		
Red Pine	41.7 MBF	\$ 139.00 / MBF
Pulpwood		
Black Spruce	131 Cords	\$ 10.90 / Cord
Jack Pine	223 Cords	\$ 13.90 / Cord
Mixed Hardwood	6 Cords	\$ 17.80 / Cord
Red Pine	4,381 Cords	\$ 65.25 / Cord

\* The total volume is statistically estimated within plus (+) or minus (-) 9.57 percent. There are an estimated 4,837 cords on this timber sale, plus or minus 463 cords at the 95% confidence level. The estimated units are final and not subject to adjustment. Prospective bidders are urged to examine this timber and to make their own estimates of quantity and quality.

### **BOND AND PAYMENT SCHEDULE:**

- A bond in the amount of \$14,815.00 to insure faithful performance of the conditions of the contract will be deposited by the successful bidder within 21 days of the sale award.
- Cutting in any sale or unit without the required advance payment would be considered a trespass.
- Total payment must be paid in advance or according to the following schedule :
  - Ten percent (10%) of the sale value must be paid within 21 days of the sale award.
  - The 10% down payment will be credited towards the first unit cut.

(c) Payment for each of the following units must be made before cutting begins in that unit:

<u>PAYMENT UNIT NUMBER</u>	<u>PERCENT OF TOTAL SALE VALUE</u>
01	9.5%
02	11.2%
03	10.3%
04	11.1%
05	12.6%
06	26.0%
07	15.7%
08	2.3%
09	1.3%

- If no cutting takes place, the 10% down payment will not be refunded.
- Operations on the contract issued will terminate on 04/15/2029.

### **SALE STATISTICS**

Volumes were calculated in cubic feet using the Michigan taper model. Cubic foot volume includes all wood inside bark for the product indicated. For display purposes, cubic feet were converted to cords and MBF using a simple conversion factor, e.g. 79 cubic feet per cord and 185 cubic feet per MBF. The cubic foot volumes are precise; the cords and MBF volumes are not. Cubic foot volume cannot be directly converted to cords or boards with precision.

### **SALE VOLUMES**

The total estimated sale volume may not equal the sum of the species/products due to the nature of statistical calculations associated with double sampling methodology.

<u>VOLUME</u>		<u>STATISTICAL RANGE IN CORDS</u>		
<u>TOTAL CUBIC FEET</u>	<u>TOTAL CORDS</u>	<u>PERCENT ERROR</u>	<u>MINIMUM</u>	<u>MAXIMUM</u>
382,148	4,837	9.57%	4,374	5,300

**VDU VOLUMES**

A VDU is a Volume Determination Unit. Volumes and their associated statistics are calculated at the VDU level and summarized to the sale level. There is often a one to one relationship between a VDU and a Payment Unit, but not always, depending on the cruise design. Refer to the VDU TO PAYMENT UNIT table.

	VOLUME			RANGE IN CORDS	
VDU	TOTAL CUBIC FEET	TOTAL CORDS	PERCENT ERROR	MINIMUM	MAXIMUM
12	78,162	989	15.40%	837	1,142
18	9,603	122	39.81%	73	170
19	196,219	2,484	14.68%	2,119	2,848
20	15,051	191	64.90%	67	314
27	15,020	190	49.80%	95	285
68	68,094	862	22.38%	669	1,055
TOTAL:	382,148	4,837		3,861	5,814

**VDU TO PAYMENT UNIT**

When a VDU is associated with more than one Payment Unit (PU), the VDU volumes are assigned to the PU based on acres of the VDU within the PU.

VDU	VDU ACRES	PU	PU ACRES
TOTAL:			



DESCRIPTION OF TIMBER BY PAYMENT UNIT (PU)

PU	MARKET GROUP	PRODUCT	QUANTITY	UNIT	ACRES	ADVERTISE PRICE
1	Red Pine	Sawtimber	11.8	MBF	39.3	\$28,200.05
	Jack Pine	Pulpwood	19	Cords		
	Red Pine		403	Cords		
2	Jack Pine	Pulpwood	31	Cords	49.2	\$33,251.65
	Red Pine		503	Cords		
3	Jack Pine	Pulpwood	10	Cords	36.9	\$30,545.50
	Red Pine		466	Cords		
4	Jack Pine	Pulpwood	11	Cords	39.8	\$32,973.65
	Red Pine		503	Cords		
5	Jack Pine	Pulpwood	5	Cords	47.0	\$37,327.25
	Red Pine		571	Cords		
6	Jack Pine	Pulpwood	10	Cords	97.2	\$77,134.00
	Red Pine		1,180	Cords		
7	Jack Pine	Pulpwood	6	Cords	58.5	\$46,476.15
	Red Pine		711	Cords		
8	Red Pine	Sawtimber	24.7	MBF	10.0	\$6,671.90
	Jack Pine	Pulpwood	64	Cords		
	Red Pine		36	Cords		
9	Red Pine	Sawtimber	5.2	MBF	10.6	\$3,710.80
	Black Spruce	Pulpwood	131	Cords		
	Jack Pine		67	Cords		
	Mixed Hardwood		6	Cords		
	Black Cherry		1	Cords		
	Red Maple		5	Cords		
	Red Pine		8	Cords		
TOTAL:			41.7	MBF		
TOTAL:			4,741	Cords		

## **Sale Specific Conditions & Requirements**

**Sale Name: Yellow Brick Road Pine**

**Sale Number: 61-132-25 Seq#: 1**

### **1 - Sale Area**

#### **1.2 - Boundaries**

##### **1.2.1 - Painted Boundaries (9/19)**

The sale boundary and Payment Unit boundaries are marked and identified by blue, red and yellow paint. Exterior sale boundary lines against private property are marked with blue paint. Exterior sale boundary lines against state are marked with red paint. Interior Payment Unit boundaries are marked with yellow paint. The painted boundary line trees are not Included Timber and are to be protected unless marked with orange paint.

### **2 - Timber Specifications**

#### **2.1 - Included Timber**

##### **2.1.2 - Clearcut Unit(s) w/o Unmerchantable Trees (8/11)**

Within Payment Unit(s) 9, cut all trees which meet minimum piece specifications in 2.2 Utilization, except do not cut white pine, red pine, oak, hemlock and cedar.

##### **2.1.3 - Cut Tree Marked Unit(s) (12/08)**

Within Payment Unit(s) 1, 2, 3, 4, 5, 6, 7, all trees are designated for cutting when marked with orange paint above and below stump height, regardless of merchantability. In addition, cut all jack pine that meet minimum piece specification.

##### **2.1.7 - Leave Tree Marked Unit(s) (6/14)**

Within Payment Unit(s) 8, all trees, which meet minimum piece specifications in 2.2 Utilization, are designated for cutting except species white pine, oak and trees marked with green paint above and below stump height.

### **3 - Payments**

#### **3.3 - Pre-measured Sales**

##### **3.3.4 - Dividing Payment Units (7/14)**

Payment Unit(s) with a value greater than \$15,000 may be divided at the request of the Purchaser and upon approval of the Unit Manager. Dividing Payment Units is a contract modification which requires a Timber Sale Contract Amendment. There will be only one division per Payment Unit.

#### **3.4 - Damaged Timber**

##### **3.4.1 - Damaged Timber (12/24)**

General Condition and Requirement 3.4 Damaged Timber, defines liquidated damages for undesignated live merchantable trees which are cut or injured. In addition, extreme care should be taken to avoid damage to tree seedlings and saplings.

No damage is acceptable to undesignated live merchantable trees. Within the Sale Area, if more than 10 % of trees (> 4.5" DBH) within a specified area of the sale are damaged, liquidated damages will be assessed for all trees damaged. Rates will be in accordance with General Condition and Requirement 3.4 Damaged Timber.

### **4 - Transportation**

#### **4.1 - Construction**

##### **4.1.6 - Road Construction (4/24)**

Construction of new roads or improvements of existing roads shall be done in such a way as to minimize the environmental and visual impacts. Merchantable trees shall be cut and utilized unless otherwise directed. Non-merchantable trees shall be severed and laid flat on the ground. Slash shall be scattered, not left in windrows, and kept a minimum of 10 feet back from the road edge. Stumps shall be set upright, not left on edge, and be moved at least 10 feet away from the road edge. Disturbed soil shall be feathered into the woods and not left in berms or windrows.

#### 4.1.7 - Road Closure (10/11)

All new roads built into the sale must be blocked to vehicle traffic within 30 days of completion of hauling. Overgrown roads that are reopened shall be considered new roads. In general, this will require constructing a four (4') foot high berm of stumps and logs covered with earth. Stumps and brush must be placed along the remainder of the trail. These roads must be rendered impassable to cars and trucks. Contact the Sale Administrator for specific details of design and placement.

#### 4.2 - Maintenance

##### 4.2.1 - Hauling Restriction (12/08)

Hauling may be restricted on forest roads by the Unit Manager or his/her representative. The restriction may occur during wet weather conditions.

### 5 - Operations

#### 5.1 - Notification

##### 5.1.1 - Pre-sale Conference (10/16)

A pre-sale conference on site between the Purchaser and Sale Administrator is required prior to beginning any operations to determine landing and road locations. The Unit Manager or his/her representative must be contacted at least 3 days in advance to schedule the conference.

##### 5.1.4 - Post-Sale Conference (10/16)

A post-sale conference on site between the Purchaser and sale administrator is required 5 days prior to the completion of active logging operations to determine clean-up and repair of landings, road edges, and the fulfillment of other contract specifications.

##### 5.1.6 - Utility R.O.W. (1/25)

It is the responsibility of the Purchaser to obtain permission from the utility company to utilize the right-of-way (R.O.W.) for operations. In payment unit 2 there is an AT&T fiber optic line that will need armoring before it is crossed with equipment. Call Miss Dig (811) to contact AT&T at least 3 days before operating in unit 2.

#### 5.2 - Conduct of Operations

##### 5.2.1 - Slash

###### 5.2.1.8 - Slash Height (12/08)

No slash or tree tops may exceed 24 inches in height.

##### 5.2.3 - Operating Restrictions

###### 5.2.3.1 - Operating Restrictions (9/11)

Within Payment Unit(s) 8 & 9 cutting, skidding, and hauling are limited to the period of 10/01 to 03/31. This restriction is because of Eastern Massasauga Rattlesnake habitat.

###### 5.2.3.6 - Bark Beetle Restriction (1/25)

In the event drought creates a high risk of pine bark beetle infestation, pine is not to be cut during the period March 1 through July 1, unless all portions of trees greater than two (2) inches in diameter are removed from the Sale Area, reduced to chips, or treated to the satisfaction of the Unit Manager or his/her representative, within 15 days of being severed from the stump. Pine log decks, pulpwood piles and treetops that are piled for chipping in the fall or winter within a 1/4 mile of susceptible sites must be removed before March 15. Residual slash must not be placed in piles or rows and must be spread over the site for quick drying. The Department of Natural Resources will exercise this specification if the risk of damage warrants.

##### 5.2.22 - Operating Caution

###### 5.2.22.1 - Operating Caution (6/11)

It is recommended, but not required, that within Payment Unit(s) 9, cutting, skidding, and hauling occur during frozen winter conditions. The reason for the recommendation is because wet ground conditions.

##### 5.2.32 - Decking/Landing Restoration (9/13)

All decking and landing areas must have the surface area restored to a condition equal to or better than before. This is to

ensure the proper regeneration of the stand.

#### 5.2.39 - ORV Trail/Route Protection (4/18)

There is an ORV trail or route and is shown on the Timber Sale Map. Do not cut trees or damage posts with yellow ORV markers. All stumps within five (5) feet of the trail must be cut flush with the ground. Maintain a 20-foot-wide slash, debris, and rut free zone daily using the ORV trail or route as the centerline. Do not run equipment down the ORV trail or route. Skidding across the trail or route may only occur in locations approved by the Sale Administrator.

### 5.3 - Stream Protection

#### 5.3.2 - Parking Equipment Near Water (10/23)

Within Payment Unit(s) 9 the parking of or storage of equipment is prohibited within 100 feet of water bodies or ground water supplies. All equipment, when not in use for harvest operations, must be parked a minimum of 100 feet away from water sources (streams, rivers, lakes, ponds, vernal pools, ground water sources) and 50 feet away from slopes leading to water sources and/or riparian areas. This restriction is for preventing unforeseen oil and/or fluid leaks from contaminating water bodies and/or ground water supplies.

### 5.4 - Soil Protection

#### 5.4.1 - Rutting Restriction, General (7/16)

Operations are to cease immediately if equipment and weather conditions result in rutting of roads and/or skid trails which are 12 inches or greater in depth and 50 feet in length. The Unit Manager or his/her representative may restrict hauling and/or skidding if ruts exceed the specified depth. With the Unit Manager or his/her representative's approval, the Purchaser may return to the area when the risk of rutting has decreased.

### 5.8 - Protection of Endangered Species

#### 5.8.5 - Protection of Raptor Nests (3/13)

All trees with raptor nests will be protected if found during harvesting operations. Notification will be made to the Unit Manager or his/her representative who will notify the Wildlife Biologist so an onsite evaluation and recommendation can be made, if necessary.

## 6 - Safety and Fire Prevention

### 6.2 - Signing

#### 6.2.1 - Road Posting (10/20)

The Purchaser is responsible for posting and maintaining caution signs on Riverview and Yellow Trees road prior to beginning operations. The road must be posted at appropriate distances from the Sale Area to warn of logging activity and truck traffic. Signs must be removed when harvest operations are suspended or completed. The Purchaser will provide these signs.

#### 6.2.3 - Recreational Trail Posting (10/20)

The Purchaser is responsible for posting and maintaining caution signs on the ORV trail prior to beginning operations. The trail must be posted at appropriate distances from the Sale Area to warn of logging activity and truck traffic at both ends of the trail. Signs must be removed when harvest operations are suspended or completed.



**TIMBER SALE MAP**

This information provided by authority of Part 525, 1994 PA 451, as amended.

Sale Number  
**61-132-25**

Date  
**08/27/2025**

Forest Management Unit	County	Mapped By: Crigier	Scale	Page	Of
Traverse City Mgt Unit	Kalkaska	Cruised By: Crigier	1:24,000	1	1

Township	Range	Section(s) and Subdivision(s)
26N	05W	NW, N1/2NE, SWNE, N1/2SW, SWSW; Sec. 21 NWSE; Sec. 9 S1/2NE, NESW, N1/2SE, SESE; Sec. 10 W1/2NW; Sec. 15 W1/2NW; Sec. 16 E1/2NE, NESE, S1/2SE; Sec. 21

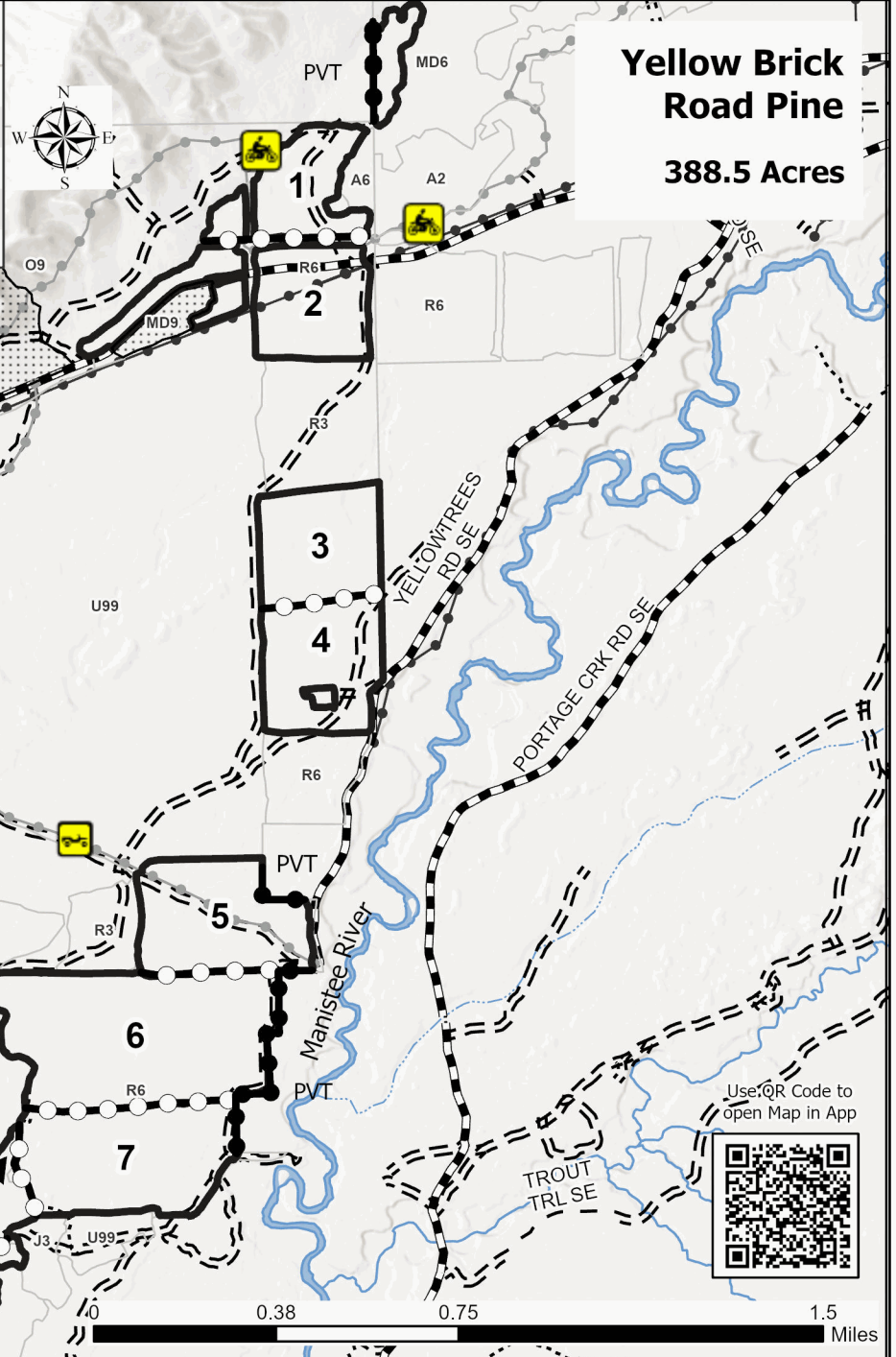
**Cover Type**

A = Aspen	J = Jack Pine	O = Oak	U = Upland Brush
B = Paper Birch	K = Rock	P = Lowland Poplar	UM = Upland Mix Forest
C = Cedar	L = Lowland Brush	Q = Mixed Swamp Conifer	V = Bog or Marsh
D = Treed Bog	LM = Lowland Mix Forest	R = Red Pine	W = White Pine
E = Swamp Hardwoods	M = Maple, Beech, Birch	S = Black Spruce	X = Non Stocked
F = Spruce/Fir	MC = Mixed Conifer	T = Tamarack	Y = Sand
G = Grass	MD = Mixed Deciduous		Z = Water
H = Hemlock	N = Marsh		

**Density**

0 = Non Stocked	5 = Pole Timber Medium
1 = Seedling Sapling Poor	6 = Pole Timber Well
2 = Seedling Sapling Medium	7 = Saw Timber Poor
3 = Seedling Sapling Well	8 = Saw Timber Medium
4 = Pole Timber Poor	9 = Saw Timber Well

Payment Unit Number	Acres	Payment Unit Number	Acres
1	39.4	6	97.2
2	49.2	7	58.5
3	36.9	8	10
4	39.8	9	10.5
5	47.1		



**Legend**

- Nearby Timber Sale
- Against State (Red)
- Private Line (Blue)
- Payment Unit (Yellow)
- Against State (red)
- Stand
- Recreational Trails
- Forest Access Route
- Administrative Access Only
- Paved Road
- Government Gravel/Dirt
- Private Gravel/Dirt
- Powerline



New Puppy Mix (61-102-25)

T28N, R05W, SEC. 11; T28N, R05W, SEC. 12; T28N, R05W, SEC. 14; Kalkaska

In response to the notice of sale to be held 4:00 p.m. (local time) on December 11, 2025, I am hereby submitting my sealed bid (firm offer) for the following forest products to be cut. Bids for individual species must be at or above the advertised price. All non-responsive bid forms may be rejected.

<u>PRODUCTS &amp; SPECIES</u>	<u>ESTIMATED VOLUME*</u>	<u>ADVERTISED PRICE</u>	<u>BID PRICE/UNIT</u>
Sawtimber			
Basswood	102.6 MBF	\$ 110.00/MBF	\$ _____
Red Maple	1.8 MBF	\$ 89.00/MBF	\$ _____
Sugar Maple	99.3 MBF	\$ 204.00/MBF	\$ _____
Pulpwood			
B. T. Aspen	436 Cords	\$ 19.30/Cord	\$ _____
Mixed Hardwood	1,010 Cords	\$ 15.40/Cord	\$ _____
Red Pine	371 Cords	\$ 56.55/Cord	\$ _____

\*The volumes are statistically estimated within plus (+) or minus (-) 15.80 percent at 95% confidence level. These estimated volumes are final and not subject to adjustment. Prospective bidders are urged to examine this timber and to make their own estimates of quantity and quality.

I understand that any or all bids may be rejected. All bids must be signed and all bid items must be bid or the bid form may be rejected. I also understand that consideration and awarding a contract will be based upon my past performance and ability to complete the contract based upon equipment and staffing subject to my control.

FEDERAL ID: \_\_\_\_ - \_\_\_\_ - \_\_\_\_ or SOCIAL SECURITY NUMBER: \_\_\_\_ - \_\_\_\_ - \_\_\_\_

Company or individual bidding: \_\_\_\_\_

Company representative's name: \_\_\_\_\_

Address: \_\_\_\_\_

City: \_\_\_\_\_ State: \_\_\_\_\_ Zip: \_\_\_\_\_

IF AVAILABLE, PLEASE PLACE THE PERSONALIZED LABEL FROM YOUR PROSPECTUS IN THE ABOVE BOX.

Individual or company representative's signature: \_\_\_\_\_ Date: \_\_\_\_\_

Phone number : \_\_\_\_\_ Email (optional): \_\_\_\_\_

**THE WINNING BIDDER MUST COMPLETE THE VERIFICATION OF WORKER'S DISABILITY COMPENSATION ACT  
COMPLIANCE (ON REVERSE SIDE IF DOUBLE SIDED) WITHIN 21 DAYS OF SALE AWARD DATE**



## TIMBER SALE VERIFICATION OF WORKER'S DISABILITY COMPENSATION ACT COMPLIANCE

As required by Act 317, P.A. 1969 (Worker's Compensation) and  
Part 5 of Act 451 of 1994, as amended.

### FOR DEPARTMENT USE ONLY

Sale Number (XX - XXX - XX - XX)

Forest Management Unit:

### VERIFICATION OF WORKER'S DISABILITY COMPENSATION ACT COMPLIANCE

- This verification must be completed and submitted within 21 days of contract award and prior to the issuance of the timber sale contract.
- In addition, if boxes 2B or 2C are checked, then Notice of Exclusion or Certificate of Insurance must be submitted within twenty-one (21) days of the contract award and prior to the issuance of the timber sale contract.
- All Information must be typed or printed except for written signatures.

Please Check Appropriate Categories:

1. My business is organized as (you **must** check one of the boxes below):
  - A. ☐ Sole Proprietorship (individual)
  - B. ☐ Partnership
  - C. ☐ Corporation
2. You **must** check one of the boxes below:
  - A. ☐ I certify my business is a sole proprietorship and it has no employees but the sole proprietor. I am not subject to the Worker's Compensation Laws.
  - B. ☐ I certify my business has satisfied its obligation to the Worker's Compensation Act through the use of an approved Notice of Exclusion (BWC-337, Rev. 5/96). I will provide a copy of the Notice of Exclusion within 21 days of the contract award. (For questions or a copy of the BWC-337, please call the Worker's Compensation Bureau at 517-322-1195).
  - C. ☐ I certify my business has a Worker's Compensation Policy. I will provide an original Certificate of Insurance within twenty-one (21) days of the contract award.
3. If you have checked item 2(A) or 2(B), you **must** indicate the number of **both** full-time and part-time employees, other than yourself, including family members and active partners (if none, you must enter "0").

\_\_\_\_\_ Full-time Employees

\_\_\_\_\_ Part-time Employees

Name of Business		Federal ID (or) Social Security No.
Address		Telephone (       )
City	State	ZIP

*I hereby certify that the above information is true and correct. I agree to notify the Michigan DNR of any changes that occur in factors affecting my coverage during any of my present and future operations.*

\_\_\_\_\_  
Signature of Owner or Authorized Representative

\_\_\_\_\_  
Title

\_\_\_\_\_  
Date

Please complete the "SEALED BID" information on the next page



26 Gap Hardwoods (61-103-25)  
T28N, R05W, SEC. 10; T28N, R05W, SEC. 11; Kalkaska COUNTY

In response to the notice of sale to be held 4:00 p.m. (local time) on December 11, 2025, I am hereby submitting my sealed bid (firm offer) for the following forest products to be cut. Bids for individual species must be at or above the advertised price. All non-responsive bid forms may be rejected.

<u>PRODUCTS &amp; SPECIES</u>	<u>ESTIMATED VOLUME*</u>	<u>ADVERTISED PRICE</u>	<u>BID PRICE/UNIT</u>
Sawtimber			
Basswood	5.6 MBF	\$ 101.00/MBF	\$ _____
Paper Birch	0.8 MBF	\$ 50.00/MBF	\$ _____
Red Maple	39.9 MBF	\$ 82.00/MBF	\$ _____
Red Oak	2.7 MBF	\$ 119.00/MBF	\$ _____
Sugar Maple	58.5 MBF	\$ 189.00/MBF	\$ _____
Yellow Birch	0.6 MBF	\$ 77.00/MBF	\$ _____
Pulpwood			
Mixed Aspen	132 Cords	\$ 17.85/Cord	\$ _____
Mixed Hardwood	917 Cords	\$ 14.25/Cord	\$ _____
Red Pine	73 Cords	\$ 52.20/Cord	\$ _____

\*The volumes are statistically estimated within plus (+) or minus (-) 16.62 percent at 95% confidence level. These estimated volumes are final and not subject to adjustment. Prospective bidders are urged to examine this timber and to make their own estimates of quantity and quality.

I understand that any or all bids may be rejected. All bids must be signed and all bid items must be bid or the bid form may be rejected. I also understand that consideration and awarding a contract will be based upon my past performance and ability to complete the contract based upon equipment and staffing subject to my control.

FEDERAL ID: \_\_\_\_ - \_\_\_\_ - \_\_\_\_ or SOCIAL SECURITY NUMBER: \_\_\_\_ - \_\_\_\_ - \_\_\_\_  
Company or individual bidding: \_\_\_\_\_  
Company representative's name: \_\_\_\_\_  
Address: \_\_\_\_\_  
City: \_\_\_\_\_ State: \_\_\_\_\_ Zip: \_\_\_\_\_

IF AVAILABLE, PLEASE PLACE THE PERSONALIZED LABEL FROM YOUR PROSPECTUS IN THE ABOVE BOX.

Individual or company representative's signature: \_\_\_\_\_ Date: \_\_\_\_\_

Phone number : \_\_\_\_\_ Email (optional): \_\_\_\_\_

**THE WINNING BIDDER MUST COMPLETE THE VERIFICATION OF WORKER'S DISABILITY COMPENSATION ACT  
COMPLIANCE (ON REVERSE SIDE IF DOUBLE SIDED) WITHIN 21 DAYS OF SALE AWARD DATE**



**TIMBER SALE**  
**VERIFICATION OF WORKER'S DISABILITY**  
**COMPENSATION ACT COMPLIANCE**

*As required by Act 317, P.A. 1969 (Worker's Compensation) and  
Part 5 of Act 451 of 1994, as amended.*

**FOR DEPARTMENT USE ONLY**

Sale Number (XX - XXX - XX - XX)

Forest Management Unit:

**VERIFICATION OF WORKER'S DISABILITY COMPENSATION ACT COMPLIANCE**

- This verification must be completed and submitted within 21 days of contract award and prior to the issuance of the timber sale contract.
- In addition, if boxes 2B or 2C are checked, then Notice of Exclusion or Certificate of Insurance must be submitted within twenty-one (21) days of the contract award and prior to the issuance of the timber sale contract.
- All information must be typed or printed except for written signatures.

Please Check Appropriate Categories:

1. My business is organized as (you **must** check one of the boxes below):
  - A. ☐ Sole Proprietorship (individual)
  - B. ☐ Partnership
  - C. ☐ Corporation
2. You **must** check one of the boxes below:
  - A. ☐ I certify my business is a sole proprietorship and it has no employees but the sole proprietor. I am not subject to the Worker's Compensation Laws.
  - B. ☐ I certify my business has satisfied its obligation to the Worker's Compensation Act through the use of an approved Notice of Exclusion (BWC-337, Rev. 5/96). I will provide a copy of the Notice of Exclusion within 21 days of the contract award. (For questions or a copy of the BWC-337, please call the Worker's Compensation Bureau at 517-322-1195).
  - C. ☐ I certify my business has a Worker's Compensation Policy. I will provide an original Certificate of Insurance within twenty-one (21) days of the contract award.
3. If you have checked item 2(A) or 2(B), you **must** indicate the number of **both** full-time and part-time employees, other than yourself, including family members and active partners (if none, you must enter "0").

\_\_\_\_\_ Full-time Employees

\_\_\_\_\_ Part-time Employees

Name of Business		Federal ID (or) Social Security No.
Address		Telephone (       )
City	State	ZIP

*I hereby certify that the above information is true and correct. I agree to notify the Michigan DNR of any changes that occur in factors affecting my coverage during any of my present and future operations.*

\_\_\_\_\_  
Signature of Owner or Authorized Representative

\_\_\_\_\_  
Title

\_\_\_\_\_  
Date

**Please complete the "SEALED BID" information on the next page**

Wow Oak Aspen (61-124-25)

T27N, R05W, SEC. 25; T27N, R05W, SEC. 35; T27N, R05W, SEC. 36; Kalkaska

In response to the notice of sale to be held 4:00 p.m. (local time) on December 11, 2025, I am hereby submitting my sealed bid (firm offer) for the following forest products to be cut. Bids for individual species must be at or above the advertised price. All non-responsive bid forms may be rejected.

<u>PRODUCTS &amp; SPECIES</u>	<u>ESTIMATED VOLUME*</u>	<u>ADVERTISED PRICE</u>	<u>BID PRICE/UNIT</u>
<b>Sawtimber</b>			
Red Maple	1.4 MBF	\$ 103.00/MBF	\$ _____
Red Oak	148.1 MBF	\$ 149.00/MBF	\$ _____
Red Pine	9.3 MBF	\$ 139.00/MBF	\$ _____
White Pine	1.0 MBF	\$ 78.00/MBF	\$ _____
<b>Pulpwood</b>			
B. T. Aspen	803 Cords	\$ 22.30/Cord	\$ _____
Black Cherry	8 Cords	\$ 17.80/Cord	\$ _____
Red Maple	167 Cords	\$ 17.80/Cord	\$ _____
Red Oak	381 Cords	\$ 27.90/Cord	\$ _____
Red Pine	6 Cords	\$ 65.25/Cord	\$ _____
White Pine	41 Cords	\$ 27.30/Cord	\$ _____

\*The volumes are statistically estimated within plus (+) or minus (-) 20.20 percent at 95% confidence level. These estimated volumes are final and not subject to adjustment. Prospective bidders are urged to examine this timber and to make their own estimates of quantity and quality.

I understand that any or all bids may be rejected. All bids must be signed and all bid items must be bid or the bid form may be rejected. I also understand that consideration and awarding a contract will be based upon my past performance and ability to complete the contract based upon equipment and staffing subject to my control.

FEDERAL ID: \_\_\_\_ - \_\_\_\_ - \_\_\_\_ or SOCIAL SECURITY NUMBER: \_\_\_\_ - \_\_\_\_ - \_\_\_\_

Company or individual bidding: \_\_\_\_\_

Company representative's name: \_\_\_\_\_

Address: \_\_\_\_\_

City: \_\_\_\_\_ State: \_\_\_\_\_ Zip: \_\_\_\_\_

IF AVAILABLE, PLEASE PLACE THE PERSONALIZED LABEL FROM YOUR PROSPECTUS IN THE ABOVE BOX.

Individual or company representative's signature: \_\_\_\_\_ Date: \_\_\_\_\_

Phone number : \_\_\_\_\_ Email (optional): \_\_\_\_\_

**THE WINNING BIDDER MUST COMPLETE THE VERIFICATION OF WORKER'S DISABILITY COMPENSATION ACT COMPLIANCE (ON REVERSE SIDE IF DOUBLE SIDED) WITHIN 21 DAYS OF SALE AWARD DATE**



## TIMBER SALE VERIFICATION OF WORKER'S DISABILITY COMPENSATION ACT COMPLIANCE

As required by Act 317, P.A. 1969 (Worker's Compensation) and  
Part 5 of Act 451 of 1994, as amended.

### FOR DEPARTMENT USE ONLY

Sale Number (XX - XXX - XX - XX)

Forest Management Unit:

### VERIFICATION OF WORKER'S DISABILITY COMPENSATION ACT COMPLIANCE

- This verification must be completed and submitted within 21 days of contract award and prior to the issuance of the timber sale contract.
- In addition, if boxes 2B or 2C are checked, then Notice of Exclusion or Certificate of Insurance must be submitted within twenty-one (21) days of the contract award and prior to the issuance of the timber sale contract.
- All information must be typed or printed except for written signatures.

Please Check Appropriate Categories:

1. My business is organized as (you **must** check one of the boxes below):
  - A. ☐ Sole Proprietorship (individual)
  - B. ☐ Partnership
  - C. ☐ Corporation
2. You **must** check one of the boxes below:
  - A. ☐ I certify my business is a sole proprietorship and it has no employees but the sole proprietor. I am not subject to the Worker's Compensation Laws.
  - B. ☐ I certify my business has satisfied its obligation to the Worker's Compensation Act through the use of an approved Notice of Exclusion (BWC-337, Rev. 5/96). I will provide a copy of the Notice of Exclusion within 21 days of the contract award. (For questions or a copy of the BWC-337, please call the Worker's Compensation Bureau at 517-322-1195).
  - C. ☐ I certify my business has a Worker's Compensation Policy. I will provide an original Certificate of Insurance within twenty-one (21) days of the contract award.
3. If you have checked item 2(A) or 2(B), you **must** indicate the number of **both** full-time and part-time employees, other than yourself, including family members and active partners (if none, you must enter "0").

\_\_\_\_\_ Full-time Employees

\_\_\_\_\_ Part-time Employees

Name of Business		Federal ID (or) Social Security No.
Address		Telephone (       )
City	State	ZIP

*I hereby certify that the above information is true and correct. I agree to notify the Michigan DNR of any changes that occur in factors affecting my coverage during any of my present and future operations.*

\_\_\_\_\_  
Signature of Owner or Authorized Representative

\_\_\_\_\_  
Title

\_\_\_\_\_  
Date

Please complete the "SEALED BID" information on the next page

Yellow Brick Road Pine (61-132-25)

T26N, R05W, SEC. 10; T26N, R05W, SEC. 15; T26N, R05W, SEC. 16; T26N,

In response to the notice of sale to be held 4:00 p.m. (local time) on December 11, 2025, I am hereby submitting my sealed bid (firm offer) for the following forest products to be cut. Bids for individual species must be at or above the advertised price. All non-responsive bid forms may be rejected.

<u>PRODUCTS &amp; SPECIES</u>	<u>ESTIMATED VOLUME*</u>	<u>ADVERTISED PRICE</u>	<u>BID PRICE/UNIT</u>
Sawtimber			
Red Pine	41.7 MBF	\$ 139.00/MBF	\$ _____
Pulpwood			
Black Spruce	131 Cords	\$ 10.90/Cord	\$ _____
Jack Pine	223 Cords	\$ 13.90/Cord	\$ _____
Mixed Hardwood	6 Cords	\$ 17.80/Cord	\$ _____
Red Pine	4,381 Cords	\$ 65.25/Cord	\$ _____

\*The volumes are statistically estimated within plus (+) or minus (-) 9.57 percent at 95% confidence level. These estimated volumes are final and not subject to adjustment. Prospective bidders are urged to examine this timber and to make their own estimates of quantity and quality.

I understand that any or all bids may be rejected. All bids must be signed and all bid items must be bid or the bid form may be rejected. I also understand that consideration and awarding a contract will be based upon my past performance and ability to complete the contract based upon equipment and staffing subject to my control.

FEDERAL ID: \_\_\_\_ - \_\_\_\_ - \_\_\_\_ or SOCIAL SECURITY NUMBER: \_\_\_\_ - \_\_\_\_ - \_\_\_\_

Company or individual bidding: \_\_\_\_\_

Company representative's name: \_\_\_\_\_

Address: \_\_\_\_\_

City: \_\_\_\_\_ State: \_\_\_\_\_ Zip: \_\_\_\_\_

IF AVAILABLE, PLEASE PLACE THE PERSONALIZED LABEL FROM YOUR PROSPECTUS IN THE ABOVE BOX.

Individual or company representative's signature: \_\_\_\_\_ Date: \_\_\_\_\_

Phone number : \_\_\_\_\_ Email (optional): \_\_\_\_\_

**THE WINNING BIDDER MUST COMPLETE THE VERIFICATION OF WORKER'S DISABILITY COMPENSATION ACT  
COMPLIANCE (ON REVERSE SIDE IF DOUBLE SIDED) WITHIN 21 DAYS OF SALE AWARD DATE**



## TIMBER SALE VERIFICATION OF WORKER'S DISABILITY COMPENSATION ACT COMPLIANCE

As required by Act 317, P.A. 1969 (Worker's Compensation) and  
Part 5 of Act 451 of 1994, as amended.

### FOR DEPARTMENT USE ONLY

Sale Number (XX - XXX - XX - XX)

Forest Management Unit:

### VERIFICATION OF WORKER'S DISABILITY COMPENSATION ACT COMPLIANCE

- This verification must be completed and submitted within 21 days of contract award and prior to the issuance of the timber sale contract.
- In addition, if boxes 2B or 2C are checked, then Notice of Exclusion or Certificate of Insurance must be submitted within twenty-one (21) days of the contract award and prior to the issuance of the timber sale contract.
- All Information must be typed or printed except for written signatures.

Please Check Appropriate Categories:

1. My business is organized as (you **must** check one of the boxes below):
  - A. ☐ Sole Proprietorship (individual)
  - B. ☐ Partnership
  - C. ☐ Corporation
2. You **must** check one of the boxes below:
  - A. ☐ I certify my business is a sole proprietorship and it has no employees but the sole proprietor. I am not subject to the Worker's Compensation Laws.
  - B. ☐ I certify my business has satisfied its obligation to the Worker's Compensation Act through the use of an approved Notice of Exclusion (BWC-337, Rev. 5/96). I will provide a copy of the Notice of Exclusion within 21 days of the contract award. (For questions or a copy of the BWC-337, please call the Worker's Compensation Bureau at 517-322-1195).
  - C. ☐ I certify my business has a Worker's Compensation Policy. I will provide an original Certificate of Insurance within twenty-one (21) days of the contract award.
3. If you have checked item 2(A) or 2(B), you **must** indicate the number of **both** full-time and part-time employees, other than yourself, including family members and active partners (if none, you must enter "0").

\_\_\_\_\_ Full-time Employees

\_\_\_\_\_ Part-time Employees

Name of Business		Federal ID (or) Social Security No.
Address		Telephone (       )
City	State	ZIP

*I hereby certify that the above information is true and correct. I agree to notify the Michigan DNR of any changes that occur in factors affecting my coverage during any of my present and future operations.*

\_\_\_\_\_  
Signature of Owner or Authorized Representative

\_\_\_\_\_  
Title

\_\_\_\_\_  
Date

Please complete the "SEALED BID" information on the next page

Slew Foot Mix (61-127-25)

T25N, R05W, SEC. 16; T25N, R05W, SEC. 17; T25N, R05W, SEC. 9; Kalkaska

In response to the notice of sale to be held 4:00 p.m. (local time) on December 11, 2025, I am hereby submitting my sealed bid (firm offer) for the following forest products to be cut. Bids for individual species must be at or above the advertised price. All non-responsive bid forms may be rejected.

<u>PRODUCTS &amp; SPECIES</u>	<u>ESTIMATED VOLUME*</u>	<u>ADVERTISED PRICE</u>	<u>BID PRICE/UNIT</u>
<b>Sawtimber</b>			
Red Maple	1.6 MBF	\$ 103.00/MBF	\$ _____
Red Oak	128.5 MBF	\$ 149.00/MBF	\$ _____
Red Pine	198.2 MBF	\$ 139.00/MBF	\$ _____
White Oak	84.2 MBF	\$ 87.00/MBF	\$ _____
White Pine	111.3 MBF	\$ 78.00/MBF	\$ _____
<b>Pulpwood</b>			
B. T. Aspen	964 Cords	\$ 22.30/Cord	\$ _____
Black Cherry	60 Cords	\$ 17.80/Cord	\$ _____
Jack Pine	10 Cords	\$ 13.90/Cord	\$ _____
Paper Birch	18 Cords	\$ 28.75/Cord	\$ _____
Quaking Aspen	328 Cords	\$ 22.30/Cord	\$ _____
Red Maple	464 Cords	\$ 17.80/Cord	\$ _____
Red Oak	525 Cords	\$ 27.90/Cord	\$ _____
Red Pine	144 Cords	\$ 65.25/Cord	\$ _____
White Oak	261 Cords	\$ 27.90/Cord	\$ _____
White Pine	266 Cords	\$ 27.30/Cord	\$ _____

\*The volumes are statistically estimated within plus (+) or minus (-) 13.55 percent at 95% confidence level. These estimated volumes are final and not subject to adjustment. Prospective bidders are urged to examine this timber and to make their own estimates of quantity and quality.

I understand that any or all bids may be rejected. All bids must be signed and all bid items must be bid or the bid form may be rejected. I also understand that consideration and awarding a contract will be based upon my past performance and ability to complete the contract based upon equipment and staffing subject to my control.

FEDERAL ID: \_\_\_\_ - \_\_\_\_ - \_\_\_\_ or SOCIAL SECURITY NUMBER: \_\_\_\_ - \_\_\_\_ - \_\_\_\_

Company or individual bidding: \_\_\_\_\_

Company representative's name: \_\_\_\_\_

Address: \_\_\_\_\_

City: \_\_\_\_\_ State: \_\_\_\_\_ Zip: \_\_\_\_\_

IF AVAILABLE, PLEASE PLACE THE PERSONALIZED LABEL FROM YOUR PROSPECTUS IN THE ABOVE BOX.

Individual or company representative's signature: \_\_\_\_\_ Date: \_\_\_\_\_

Phone number : \_\_\_\_\_ Email (optional): \_\_\_\_\_

**THE WINNING BIDDER MUST COMPLETE THE VERIFICATION OF WORKER'S DISABILITY COMPENSATION ACT  
COMPLIANCE (ON REVERSE SIDE IF DOUBLE SIDED) WITHIN 21 DAYS OF SALE AWARD DATE**



## TIMBER SALE VERIFICATION OF WORKER'S DISABILITY COMPENSATION ACT COMPLIANCE

As required by Act 317, P.A. 1969 (Worker's Compensation) and  
Part 5 of Act 451 of 1994, as amended.

### FOR DEPARTMENT USE ONLY

Sale Number (XX - XXX - XX - XX)

Forest Management Unit:

### VERIFICATION OF WORKER'S DISABILITY COMPENSATION ACT COMPLIANCE

- This verification must be completed and submitted within 21 days of contract award and prior to the issuance of the timber sale contract.
- In addition, if boxes 2B or 2C are checked, then Notice of Exclusion or Certificate of Insurance must be submitted within twenty-one (21) days of the contract award and prior to the issuance of the timber sale contract.
- All information must be typed or printed except for written signatures.

Please Check Appropriate Categories:

1. My business is organized as (you **must** check one of the boxes below):
  - A. ☐ Sole Proprietorship (individual)
  - B. ☐ Partnership
  - C. ☐ Corporation
2. You **must** check one of the boxes below:
  - A. ☐ I certify my business is a sole proprietorship and it has no employees but the sole proprietor. I am not subject to the Worker's Compensation Laws.
  - B. ☐ I certify my business has satisfied its obligation to the Worker's Compensation Act through the use of an approved Notice of Exclusion (BWC-337, Rev. 5/96). I will provide a copy of the Notice of Exclusion within 21 days of the contract award. (For questions or a copy of the BWC-337, please call the Worker's Compensation Bureau at 517-322-1195).
  - C. ☐ I certify my business has a Worker's Compensation Policy. I will provide an original Certificate of Insurance within twenty-one (21) days of the contract award.
3. If you have checked item 2(A) or 2(B), you **must** indicate the number of **both** full-time and part-time employees, other than yourself, including family members and active partners (if none, you must enter "0").

\_\_\_\_\_ Full-time Employees

\_\_\_\_\_ Part-time Employees

Name of Business		Federal ID (or) Social Security No.
Address		Telephone (       )
City	State	ZIP

*I hereby certify that the above information is true and correct. I agree to notify the Michigan DNR of any changes that occur in factors affecting my coverage during any of my present and future operations.*

\_\_\_\_\_  
Signature of Owner or Authorized Representative

\_\_\_\_\_  
Title

\_\_\_\_\_  
Date

Please complete the "SEALED BID" information on the next page



Professional Hdwd (61-126-25)  
T27N, R05W, SEC. 34; Kalkaska COUNTY

In response to the notice of sale to be held 4:00 p.m. (local time) on December 11, 2025, I am hereby submitting my sealed bid (firm offer) for the following forest products to be cut. Bids for individual species must be at or above the advertised price. All non-responsive bid forms may be rejected.

<u>PRODUCTS &amp; SPECIES</u>	<u>ESTIMATED VOLUME*</u>	<u>ADVERTISED PRICE</u>	<u>BID PRICE/UNIT</u>
Sawtimber			
Beech	14.3 MBF	\$ 164.00/MBF	\$ _____
Red Maple	19.2 MBF	\$ 103.00/MBF	\$ _____
Sugar Maple	11.6 MBF	\$ 236.00/MBF	\$ _____
Pulpwood			
B. T. Aspen	26 Cords	\$ 22.30/Cord	\$ _____
Beech	57 Cords	\$ 17.80/Cord	\$ _____
Red Maple	61 Cords	\$ 17.80/Cord	\$ _____
Sugar Maple	86 Cords	\$ 17.80/Cord	\$ _____

\*The volumes are statistically estimated within plus (+) or minus (-) 38.37 percent at 95% confidence level. These estimated volumes are final and not subject to adjustment. Prospective bidders are urged to examine this timber and to make their own estimates of quantity and quality.

I understand that any or all bids may be rejected. All bids must be signed and all bid items must be bid or the bid form may be rejected. I also understand that consideration and awarding a contract will be based upon my past performance and ability to complete the contract based upon equipment and staffing subject to my control.

FEDERAL ID: \_\_\_\_ - \_\_\_\_ - \_\_\_\_ or SOCIAL SECURITY NUMBER: \_\_\_\_ - \_\_\_\_ - \_\_\_\_  
Company or individual bidding: \_\_\_\_\_  
Company representative's name: \_\_\_\_\_  
Address: \_\_\_\_\_  
City: \_\_\_\_\_ State: \_\_\_\_\_ Zip: \_\_\_\_\_

IF AVAILABLE, PLEASE PLACE THE PERSONALIZED LABEL FROM YOUR PROSPECTUS IN THE ABOVE BOX.

Individual or company representative's signature: \_\_\_\_\_ Date: \_\_\_\_\_

Phone number : \_\_\_\_\_ Email (optional): \_\_\_\_\_

**THE WINNING BIDDER MUST COMPLETE THE VERIFICATION OF WORKER'S DISABILITY COMPENSATION ACT  
COMPLIANCE (ON REVERSE SIDE IF DOUBLE SIDED) WITHIN 21 DAYS OF SALE AWARD DATE**



## TIMBER SALE VERIFICATION OF WORKER'S DISABILITY COMPENSATION ACT COMPLIANCE

As required by Act 317, P.A. 1969 (Worker's Compensation) and  
Part 5 of Act 451 of 1994, as amended.

### FOR DEPARTMENT USE ONLY

Sale Number (XX - XXX - XX - XX)

Forest Management Unit:

### VERIFICATION OF WORKER'S DISABILITY COMPENSATION ACT COMPLIANCE

- This verification must be completed and submitted within 21 days of contract award and prior to the issuance of the timber sale contract.
- In addition, if boxes 2B or 2C are checked, then Notice of Exclusion or Certificate of Insurance must be submitted within twenty-one (21) days of the contract award and prior to the issuance of the timber sale contract.
- All information must be typed or printed except for written signatures.

Please Check Appropriate Categories:

1. My business is organized as (you **must** check one of the boxes below):
  - A. ☐ Sole Proprietorship (individual)
  - B. ☐ Partnership
  - C. ☐ Corporation
2. You **must** check one of the boxes below:
  - A. ☐ I certify my business is a sole proprietorship and it has no employees but the sole proprietor. I am not subject to the Worker's Compensation Laws.
  - B. ☐ I certify my business has satisfied its obligation to the Worker's Compensation Act through the use of an approved Notice of Exclusion (BWC-337, Rev. 5/96). I will provide a copy of the Notice of Exclusion within 21 days of the contract award. (For questions or a copy of the BWC-337, please call the Worker's Compensation Bureau at 517-322-1195).
  - C. ☐ I certify my business has a Worker's Compensation Policy. I will provide an original Certificate of Insurance within twenty-one (21) days of the contract award.
3. If you have checked item 2(A) or 2(B), you **must** indicate the number of **both** full-time and part-time employees, other than yourself, including family members and active partners (if none, you must enter "0").

\_\_\_\_\_ Full-time Employees

\_\_\_\_\_ Part-time Employees

Name of Business		Federal ID (or) Social Security No.
Address		Telephone (       )
City	State	ZIP

*I hereby certify that the above information is true and correct. I agree to notify the Michigan DNR of any changes that occur in factors affecting my coverage during any of my present and future operations.*

\_\_\_\_\_  
Signature of Owner or Authorized Representative

\_\_\_\_\_  
Title

\_\_\_\_\_  
Date

Please complete the "SEALED BID" information on the next page