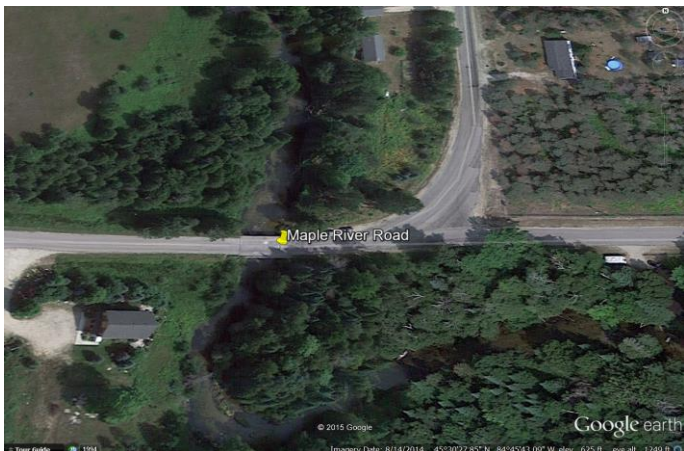


Maple River Maple River Road



Fish Species

Brown Trout, Brook Trout and Rainbow Trout

Species Description

Brown trout, brook trout, and rainbow trout are in the Maple River. Some lake-run brown trout and rainbow trout (steelhead) migrating from Burt Lake may be encountered here seasonally.

Geographic Coordinates

Lat:45.5077 / Long:-84.76237

Noteworthy

The access to this site is within the public road right-of-way so please respect private lands and stay in the water once out of the right-of-way.

Fishing Regulations

The Maple River at Maple River Road is a designated Type 4 trout stream. Please refer to the Inland Trout and Salmon Stream Regulations in the current Michigan Fishing Guide.

Directions to Site

Take Maple River Road east from US-31 to the river. Parking is limited to a couple pull-off areas along the side of the road.

Regional Visitor Information (URL)

gaylordmichigan.net