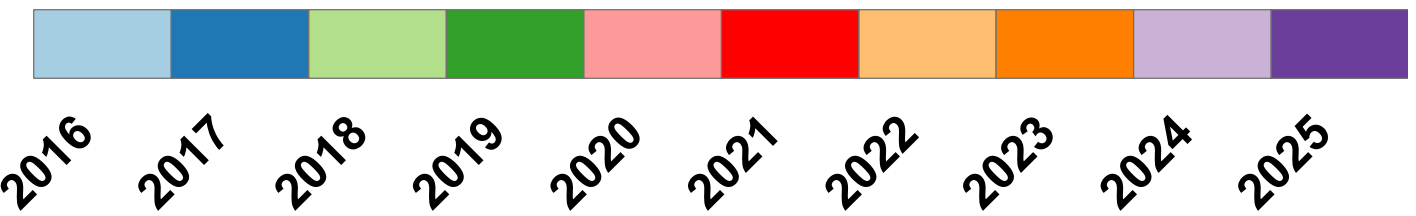


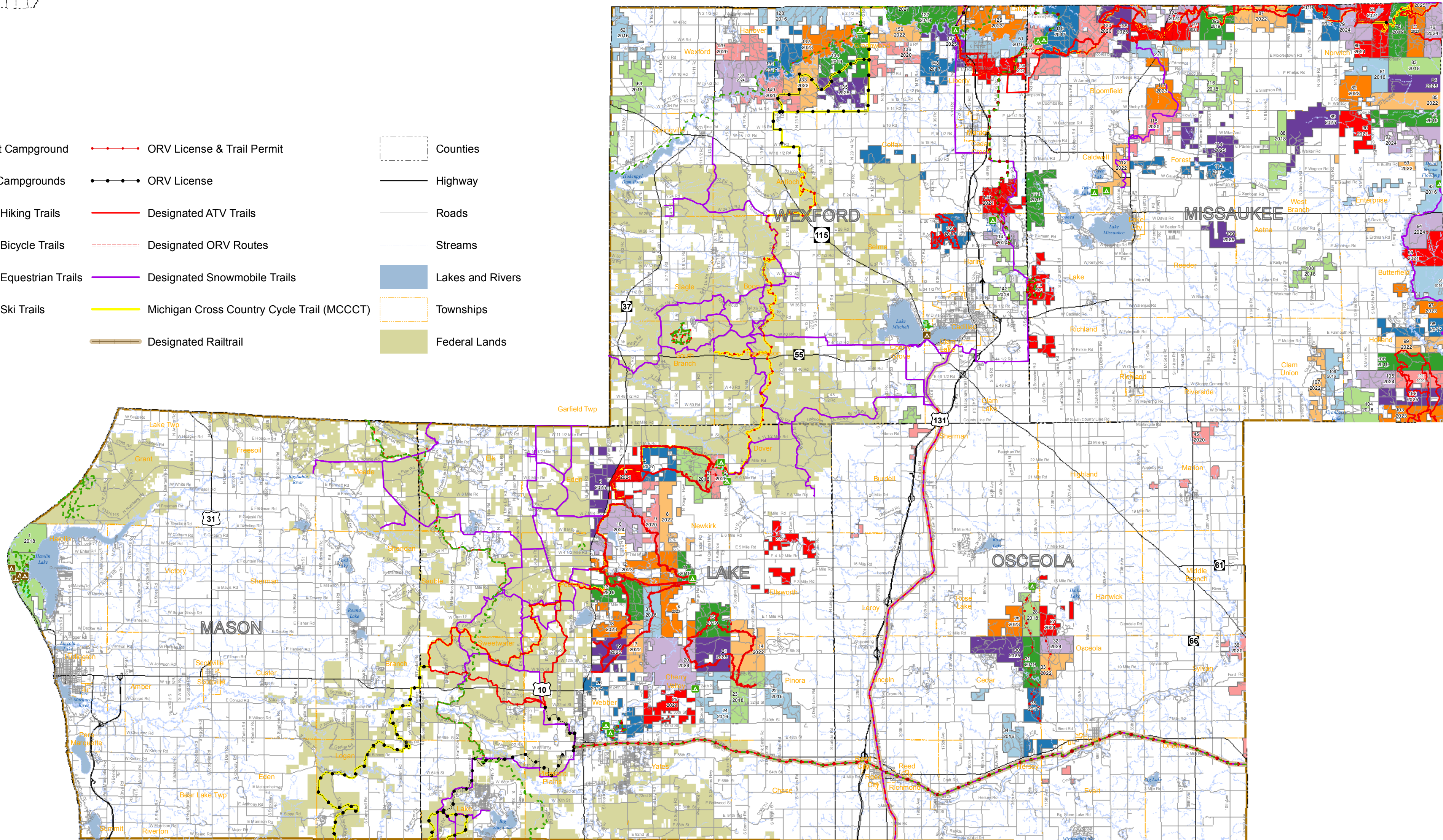
Cadillac Management Unit State Forest Compartments by Year of Entry

YOE



Legend

- State Forest Campground
- State Park Campgrounds
- Designated Hiking Trails
- Designated Bicycle Trails
- Designated Equestrian Trails
- Designated Ski Trails
- ORV License & Trail Permit
- ORV License
- Designated ATV Trails
- Designated ORV Routes
- Designated Snowmobile Trails
- Michigan Cross Country Cycle Trail (MCCCT)
- Designated Railtrail
- Counties
- Highway
- Roads
- Streams
- Lakes and Rivers
- Townships
- Federal Lands



Year of Entry (YOE) represents the fiscal year treatments will be initiated. Treatment decisions are made approximately 1-2 years before the Year of Entry. Example: For a 2010 YOE compartment, a treatment decision is made in the calendar year of 2008.

$$\frac{58}{2016} = \frac{\text{Compartment Number}}{\text{Year of Entry}}$$

