



Compartment Review Presentation

Roscommon Forest Management Unit

Compartment 71185

Entry Year 2017

Acreage: 1,867

County Ogemaw

Management Area: Kirtland's Warbler

Revision Date: 2015-07-08

Stand Examiner: Doug Bates

Legal Description:

T23N R01E Sections 17, 19, 20, 21, & 30

Identified Planning Goals:

Maintain current cover types, balance stocking for sustained yield and healthy stands. Provide habitat for Kirtland warbler as per the KW Management Plan.

Soil and topography:

Flat to rolling terrain, with a lower swampy areas along the northwest side. Soils are Grayling and Grayalm Sands in the uplands and Roscommon mucky sand in the swamp.

Ownership Patterns, Development, and Land Use in and Around the Compartment:

Mainly state, with a private subdivided parcel (Dillon Plat) in the center of the compartment.

Unique Natural Features:

None noted.

Archeological, Historical, and Cultural Features:

None recorded or identified during field work.

Special Management Designations or Considerations:

Kirtland Warbler habitat.

Watershed and Fisheries Considerations:

None noted.

Wildlife Habitat Considerations:

Mineral Resource and Development Concerns and/or Restrictions

Sections 17, 19 - 21, & 30, T23N R1E, Ogemaw County

Surface sediments consist of ice-contact and glacial outwash sand and gravel and postglacial alluvium. The glacial drift thickness varies between 400 and 600 feet. Beneath the glacial drift Mississippian Michigan Formation. The Michigan is quarried for gypsum elsewhere in the state. No active gravel pits are located in the vicinity, but potential could be good on the uplands. The Rose City fields are located six miles to the northeast. The fields have produced over 9.3 million bbls of oil and 9.9 Bcf of gas from the Devonian Richfield Member. The main field also produces from the Prairie du Chien and has produced over 31 Bcf of gas and 200,000 bbls of oil. Portions of Section 17 are currently leased for oil and gas exploration and development.

Vehicle Access:

All portions can be accessed easily.

Survey Needs:

None at this time.

Recreational Facilities and Opportunities:

This compartment is used by snowmobiles, bird watching and hunting pursuits. Designated snowmobile trail 6-9 bisects the compartment and occurs along Saga Road. Utilize forest management practices to curtail further damage by off road vehicle use and other trespasses issues. If harvest activities occur during the snowmobile season of December 1 thru March 31 a snow bed must be preserved on Designated Snowmobile Trails. Ensure logging activity does not obliterate the

designated trails by limiting the number of crossings. All stumps within 20 feet of the trail shall be Flush-Cut to ensure stumps do not result in unsafe conditions. Assure 'logging ahead' warning signs are placed on the designated trails and snowmobile trails during logging activity.

Fire Protection:

Additional Compartment Information:

The following reports from the Inventory are attached:

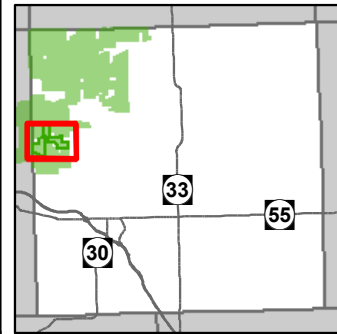
- Total Acres by Cover Type and Age Class**
- Cover Type by Harvest Method**
- Proposed Treatments – No Limiting Factors**
- Proposed Treatments – With Limiting Factors**
- Stand Details (Forested and Nonforested)**
- Dedicated and Proposed Special Conservation Areas**
- Site Condition Details**

The following information is displayed, where pertinent, on the attached compartment maps:

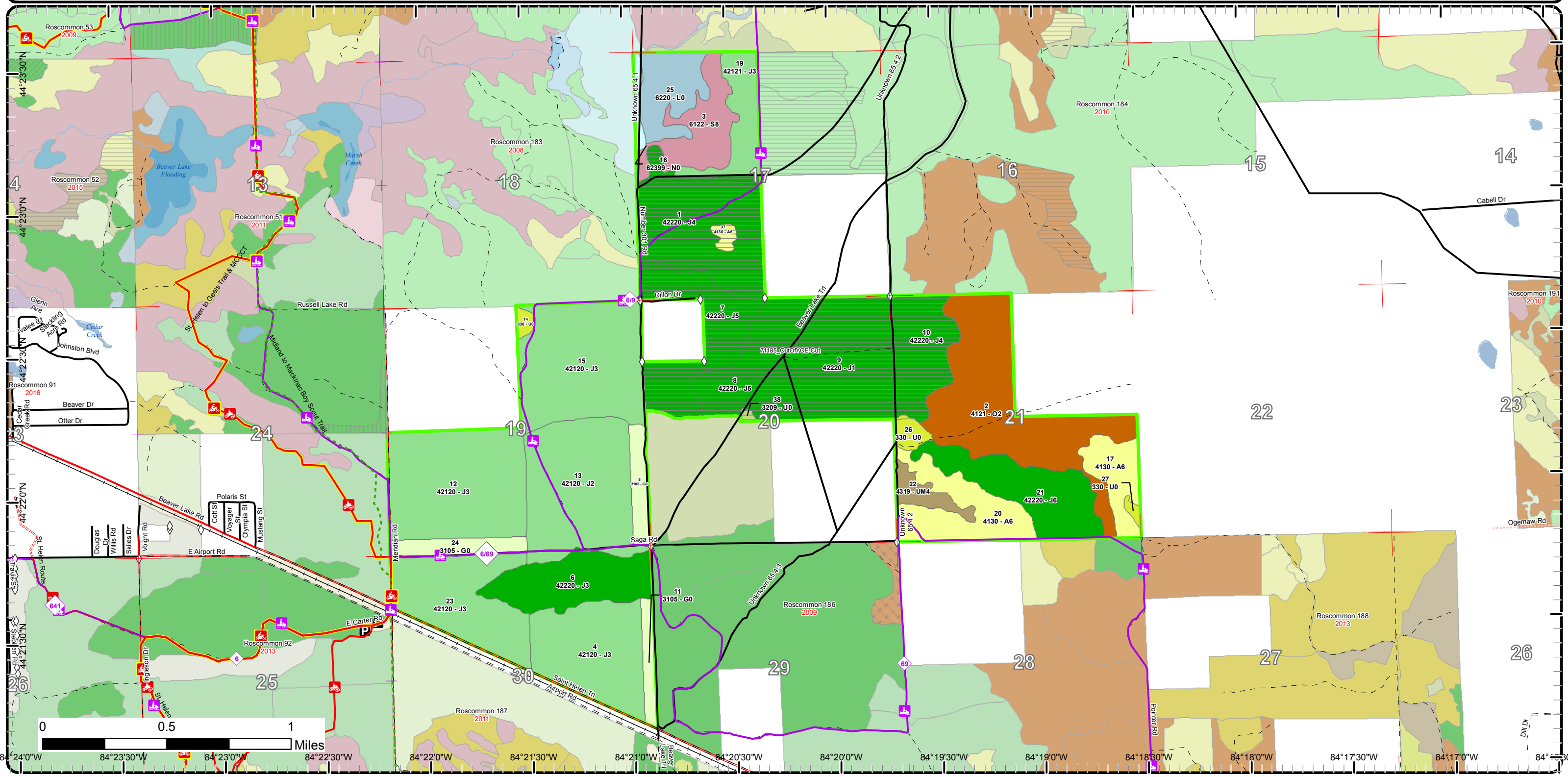
- Base feature information, stand boundaries, cover types, and numbers**
- Proposed treatments**
- Site condition boundaries**
- Details on the road access system**

Cover Type & Treatments

Compartment: 185
 T23N 01E 17, 19-21, 30
 County: Ogemaw
 Unit: Roscommon
 Mgmt Area: Kirtland's Warbler
 YOE: 2017
 Acres: 1867 GIS Calculated
 Examiner: Doug Bates
 Map Revised: 7/27/2015
 Map Phase: Pre-Review

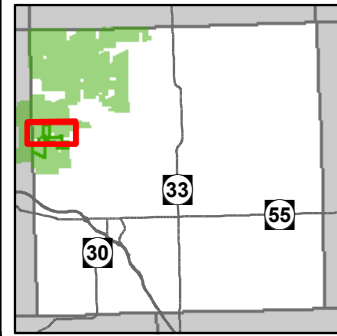


- ✚ Remonumented Section Corners
- ◇ Field Grade GPS Corners
- Miris Corners
- County Paved Roads
- County Gravel Roads
- Gravel Roads
- Poor Dirt Roads
- County Poor Dirt Roads
- ⋯ Closed Roads
- ⌒ Bridges
- ⌒ Culverts
- ✈ Airport
- Ⓟ Parking Lot
- 🚲 MCCCT Trails
- 🚲 ORV Trails
- 🚲 ORV Routes
- 🚲 Snowmobile Trails
- Designated Hiking Pathways
- Designated ATV
- Designated ORV Routes
- Designated Snowmobile Trails
- Designated MCCCT Trails
- Railroads
- Rivers
- 🌊 Lakes
- 🌊 Treatments
- 🌊 Clearcut (w/Reserves)
- 🌲 Forest Coverture
- 412 - Oak Types
- 413 - Aspen
- 421 - Planted Pines
- 422 - Natural Pines
- 430 - Upland Mixed Fores
- 612 - Lowland Coniferous Forest
- Non-Forest Coverture
- 310 - Herbaceous Openland
- 320 - Upland Shrub
- 330 - Low Density Trees
- 622 - Lowland Shrub
- 623 - Emergent Wetland

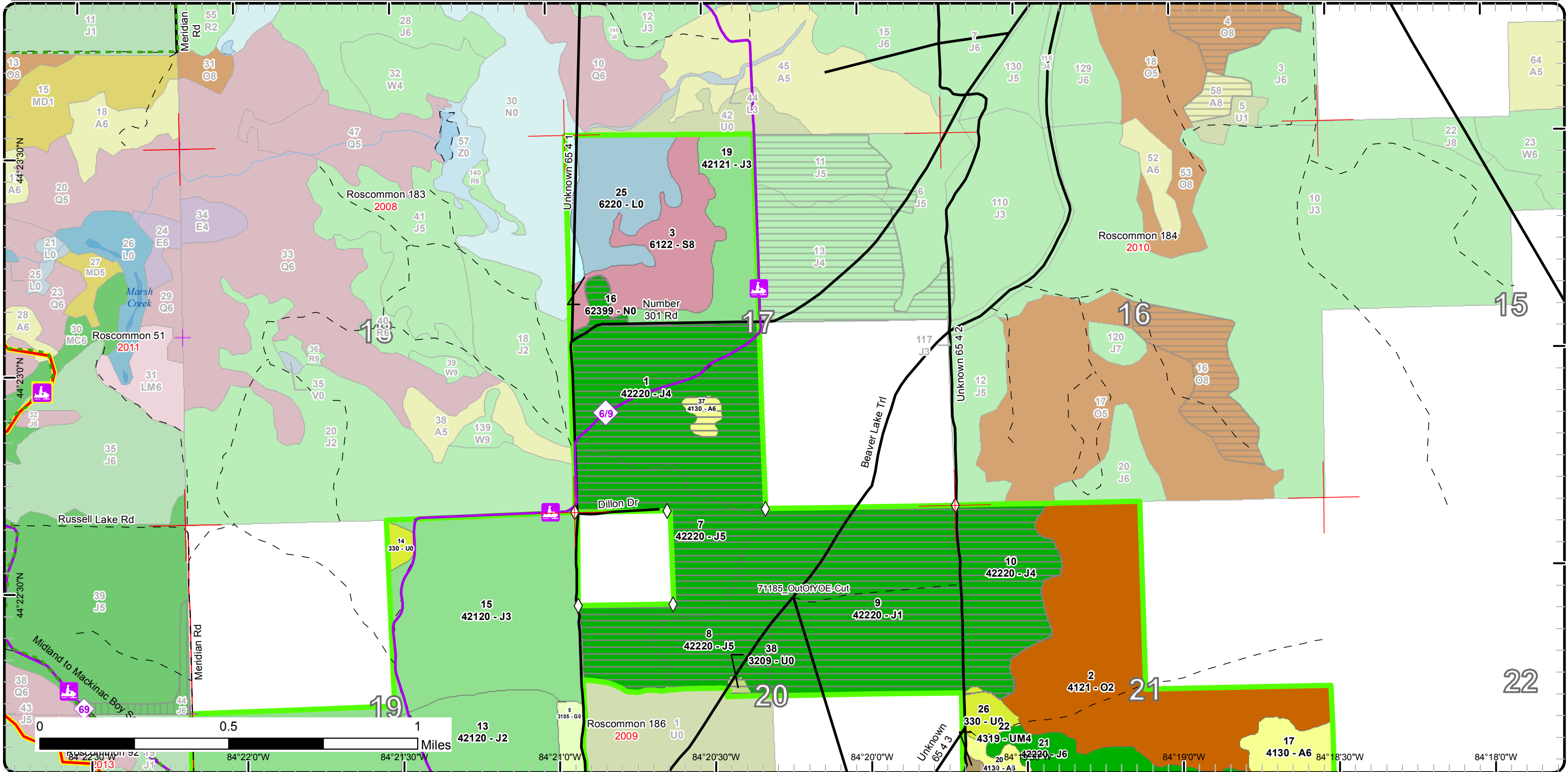


Cover Type & Treatments

Compartment: 185
 T23N 01E 17, 19-21, 30
 County: Ogemaw
 Unit: Roscommon
 Mgmt Area: Kirtland's Warbler
 YOY: 2017
 Acres: 1867 GIS Calculated
 Examiner: Doug Bates
 Map Revised: 7/27/2015
 Map Phase: Pre-Review

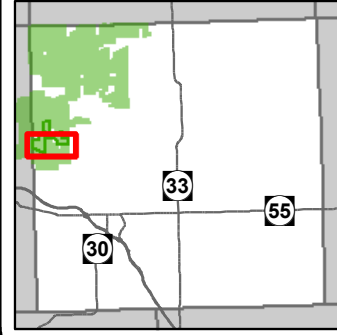


- ✚ Remonumented Section Corners
- ◇ Field Grade GPS Corners
- Miris Corners
- Paved Roads
- - Poor Dirt Roads
- - County Poor Dirt Roads
- 🚲 MCCCT Trails
- 🛷 Snowmobile Trails
- - Designated Hiking Pathways
- Designated ATV
- Designated Snowmobile Trails
- Designated MCCCT Trails
- Rivers
- 🌊 Lakes
- ▭ Clearcut (w/Reserves)
- 🌲 Forest Covertypes
 - 🟤 412 - Oak Types
 - 🟡 413 - Aspen
 - 🟢 421 - Planted Pines
 - 🟩 422 - Natural Pines
 - 🟪 430 - Upland Mixed Fores
 - 🟫 612 - Lowland Coniferous Forest
- 🌿 Non-Forest Covertypes
 - 🟩 310 - Herbaceous Openland
 - 🟨 320 - Upland Shrub
 - 🟦 330 - Low Density Trees
- 🟦 622 - Lowland Shrub
- 🟨 623 - Emergent Wetland

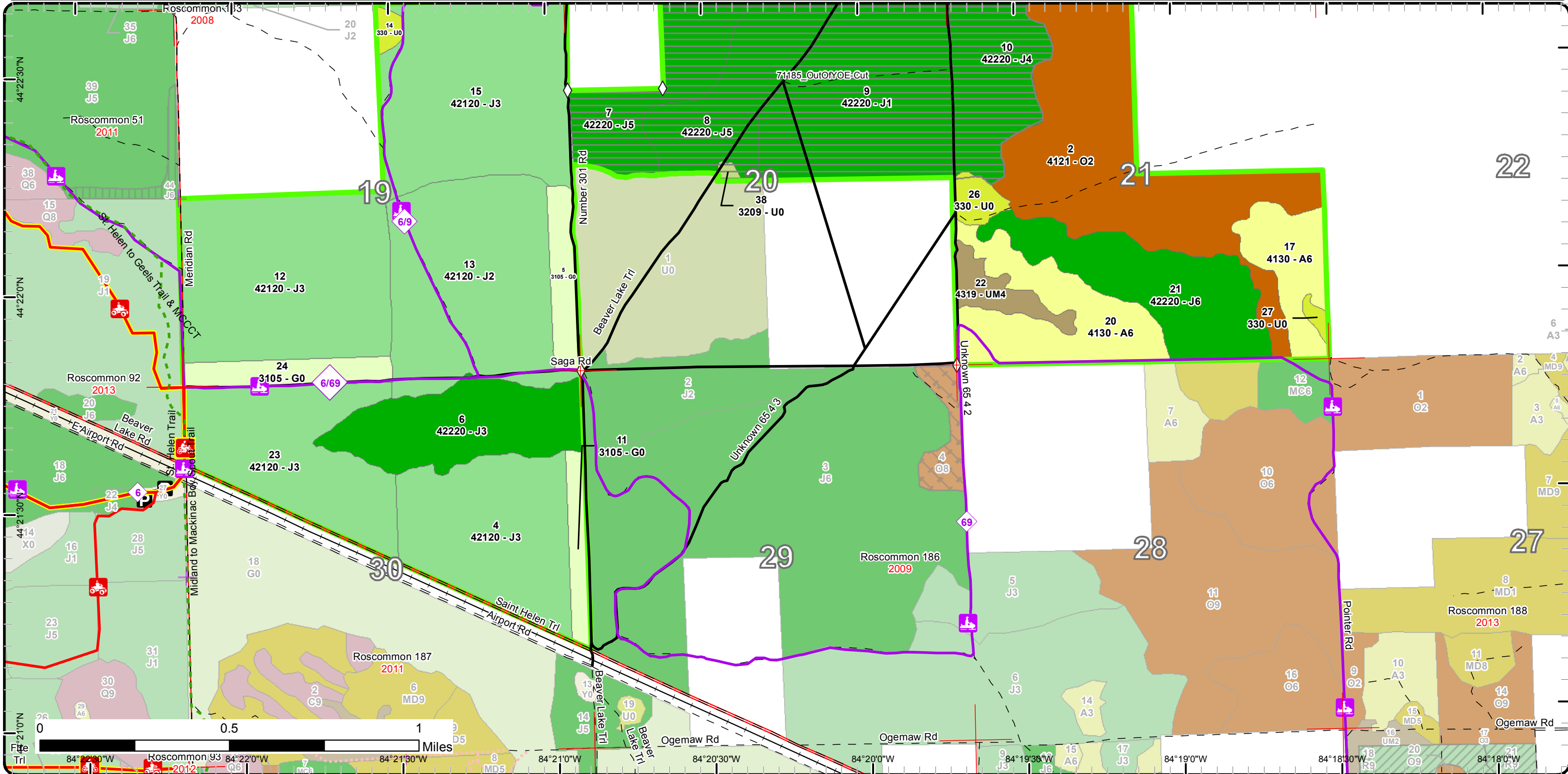


Cover Type & Treatments

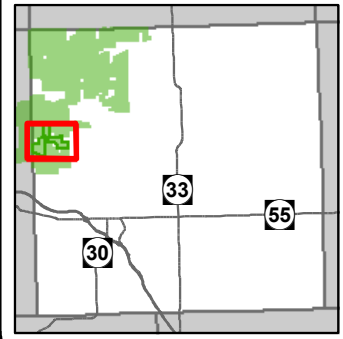
Compartment: 185
 T23N 01E 17, 19-21, 30
 County: Ogemaw
 Unit: Roscommon
 Mgmt Area: Kirtland's Warbler
 YOE: 2017
 Acres: 1867 GIS Calculated
 Examiner: Doug Bates
 Map Revised: 7/27/2015
 Map Phase: Pre-Review



- Remonumented Section Corners
- Field Grade GPS Corners
- Miris Corners
- Paved Roads
- County Gravel Roads
- Gravel Roads
- Poor Dirt Roads
- County Poor Dirt Roads
- Closed Roads
- Parking Lot
- MCCCT Trails
- ORV Trails
- Snowmobile Trails
- Designated Hiking Pathways
- Designated ATV
- Designated Snowmobile Trails
- Designated MCCCT Trails
- Railroads
- Clearcut (w/Reserves)
- 412 - Oak Types
- 413 - Aspen
- 421 - Planted Pines
- 422 - Natural Pines
- 430 - Upland Mixed Fores
- 310 - Herbaceous Openland
- 320 - Upland Shrub
- 330 - Low Density Trees

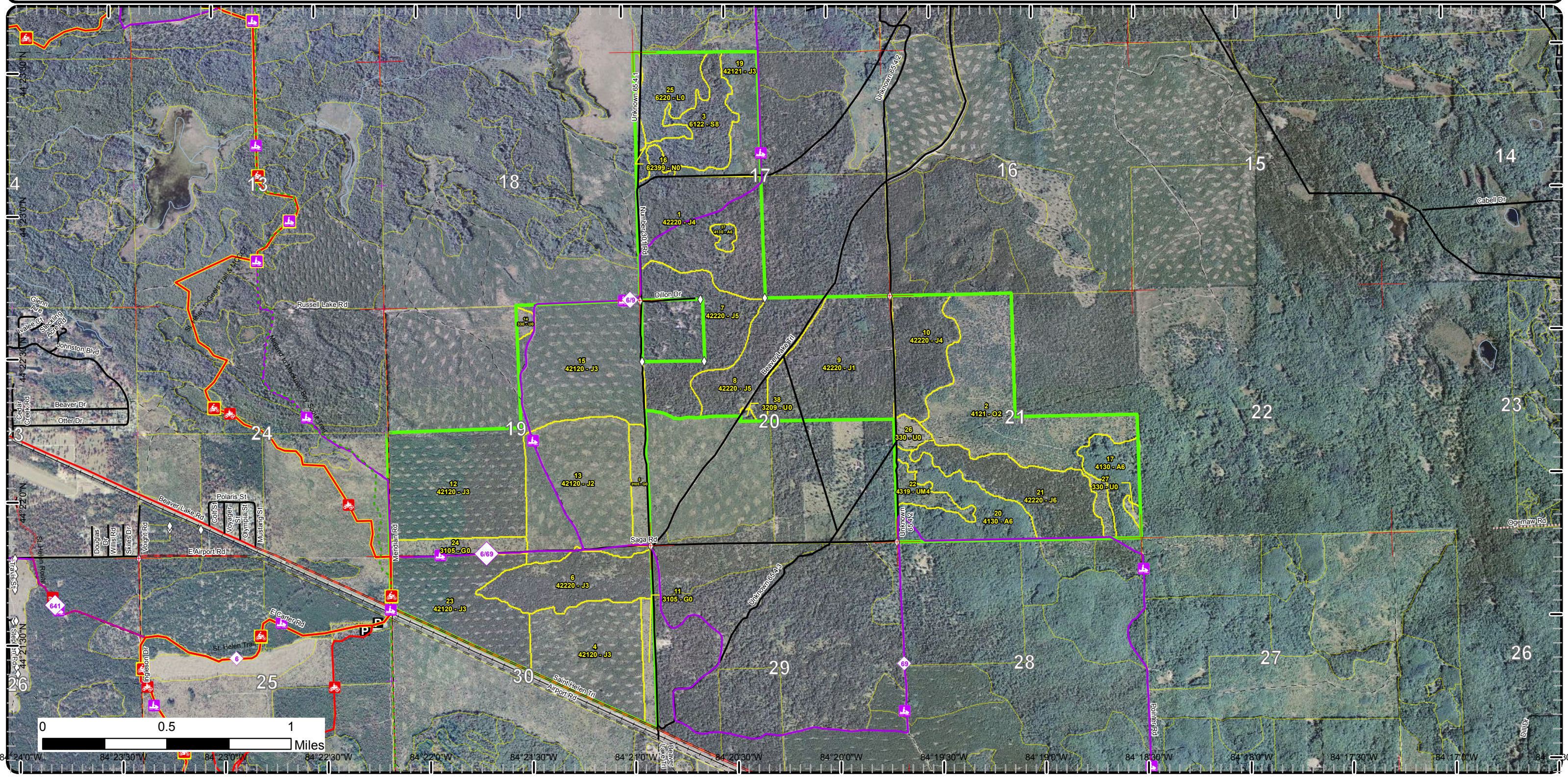


Stand Boundary Map

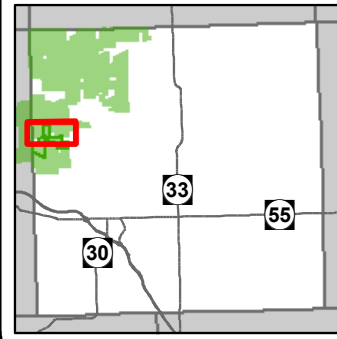


Compartment: 185
 T23N 01E 17, 19-21, 30
 County: Ogemaw
 Unit: Roscommon
 Mgmt Area: Kirtland's Warbler
 YOE: 2017
 Acres: 1867 GIS Calculated
 Examiner: Doug Bates
 Map Revised: 7/27/2015
 Map Phase: Pre-Review

- + Remonumented Section Corners
- P Parking Lot
- ◇ Field Grade GPS Corners
- ◇ Miris Corners
- County Paved Roads
- Paved Roads
- County Gravel Roads
- = Gravel Roads
- - Poor Dirt Roads
- - County Poor Dirt Roads
- - - Closed Roads
- ⌒ Bridges
- ⌒ Culverts
- ✈ Airport
- 🏍 MCCCT Trails
- 🏍 ORV Trails
- 🏍 ORV Routes
- 🏍 Snowmobile Trails
- - Designated Hiking Pathways
- - - Designated ATV
- - - Designated ORV Routes
- - - Designated Snowmobile Trails
- Designated MCCCT Trails
- Railroads
- Rivers
- ▭ Stand Boundaries
- Forest Covertype
 - 412 - Oak Types
 - 413 - Aspen
 - 421 - Planted Pines
 - 422 - Natural Pines
 - 430 - Upland Mixed Fores
 - 612 - Lowland Coniferous Forest
- Non-Forest Covertype
 - 310 - Herbaceous Openland
 - 320 - Upland Shrub
 - 330 - Low Density Trees
 - 622 - Lowland Shrub
 - 623 - Emergent Wetland

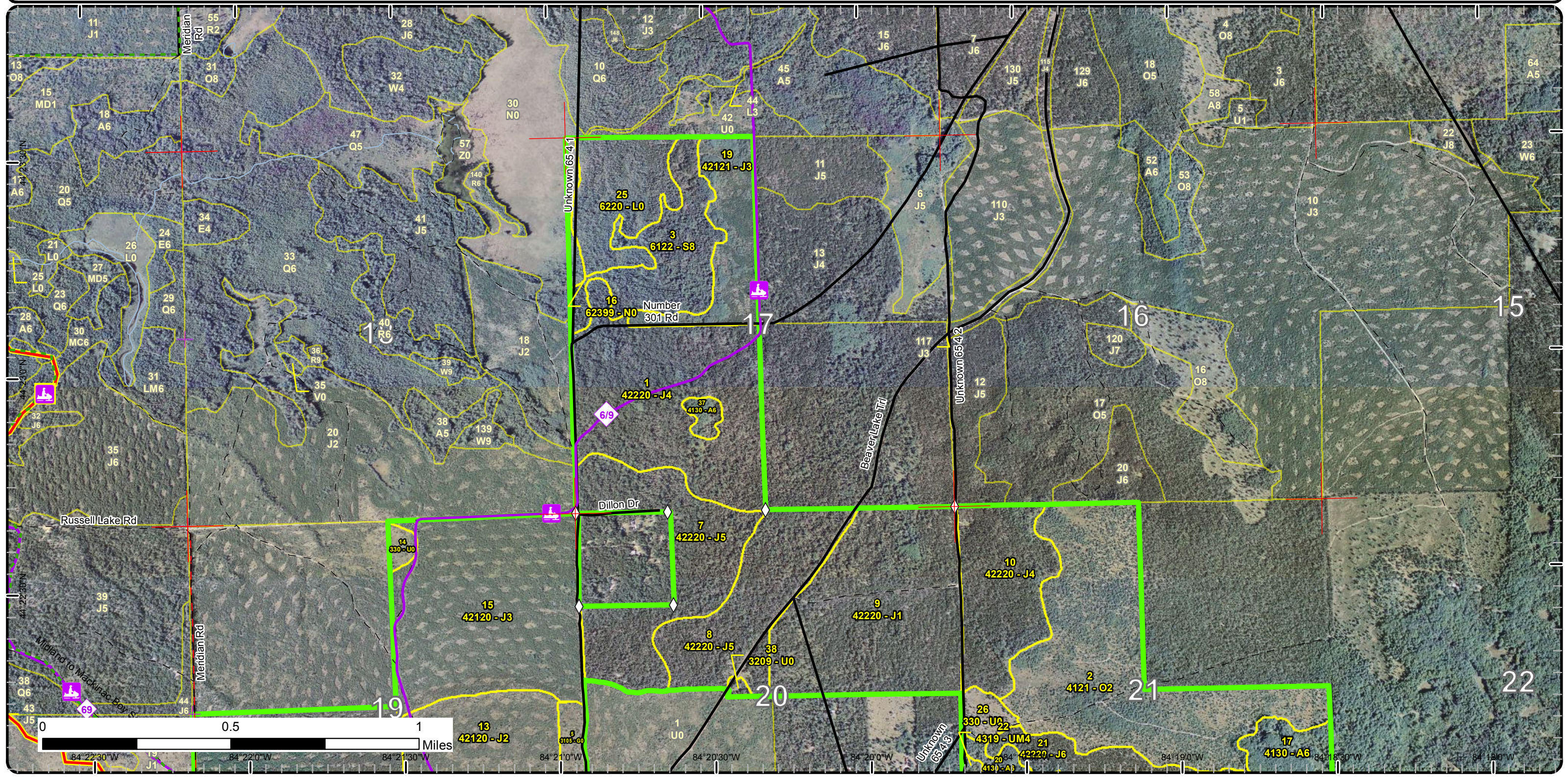


Stand Boundary Map



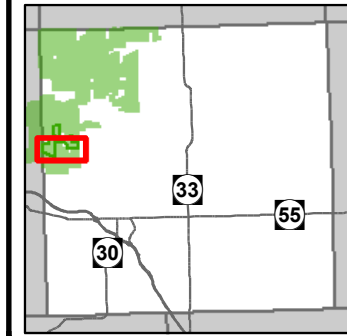
Compartment: 185
 T23N 01E 17, 19-21, 30
 County: Ogemaw
 Unit: Roscommon
 Mgmt Area: Kirtland's Warbler
 YOE: 2017
 Acres: 1867 GIS Calculated
 Examiner: Doug Bates
 Map Revised: 7/27/2015
 Map Phase: Pre-Review

- + Remonumented Section Corners
 - ◇ Field Grade GPS Corners
 - Miris Corners
 - Paved Roads
 - - Poor Dirt Roads
 - County Poor Dirt Roads
 - MCCCT Trails
 - Snowmobile Trails
 - - Designated Hiking Pathways
 - Designated ATV
 - Designated Snowmobile Trails
 - Designated MCCCT Trails
 - Rivers
- Stand Boundaries
- | Forest Covertype | |
|---------------------------------|--|
| 412 - Oak Types | |
| 413 - Aspen | |
| 421 - Planted Pines | |
| 422 - Natural Pines | |
| 430 - Upland Mixed Fores | |
| 612 - Lowland Coniferous Forest | |
- | Non-Forest Covertype | |
|---------------------------|--|
| 310 - Herbaceous Openland | |
| 320 - Upland Shrub | |
| 330 - Low Density Trees | |
| 622 - Lowland Shrub | |
| 623 - Emergent Wetland | |

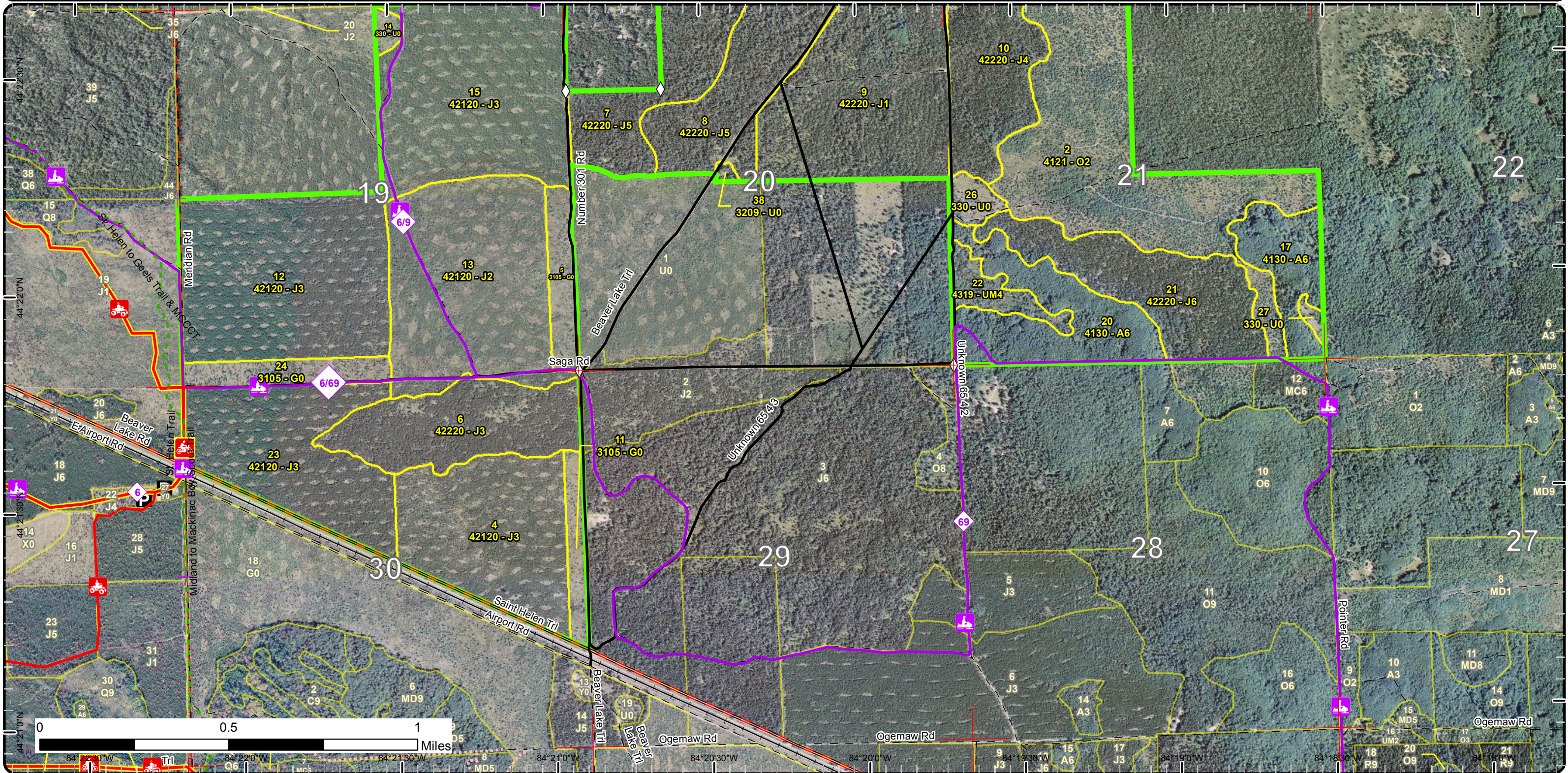


Stand Boundary Map

Compartment: 185
 T23N 01E 17, 19-21, 30
 County: Ogemaw
 Unit: Roscommon
 Mgmt Area: Kirtland's Warbler
 YOE: 2017
 Acres: 1867 GIS Calculated
 Examiner: Doug Bates
 Map Revised: 7/27/2015
 Map Phase: Pre-Review

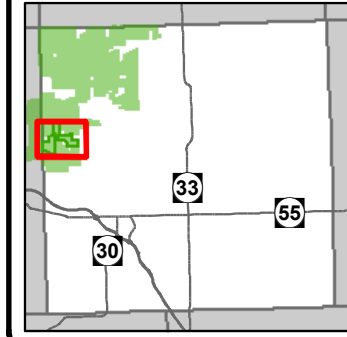


- + Remonumented Section Corners
 ■ Snowmobile Trails
Non-Forest Covertypes
- ◇ Field Grade GPS Corners
 - Designated Hiking Pathways
310 - Herbaceous Openland
- Miris Corners
 - Designated ATV
320 - Upland Shrub
- Paved Roads
 - Designated Snowmobile Trails
330 - Low Density Trees
- County Gravel Roads
 - Designated MCCCT Trails
- = Gravel Roads
 — Railroads
- - Poor Dirt Roads
 Stand Boundaries
- - County Poor Dirt Roads
 Forest Covertypes
- ⋯ Closed Roads
 412 - Oak Types
- P Parking Lot
 413 - Aspen
- 🚲 MCCCT Trails
 421 - Planted Pines
- 🚲 ORV Trails
 422 - Natural Pines
- 430 - Upland Mixed Fores

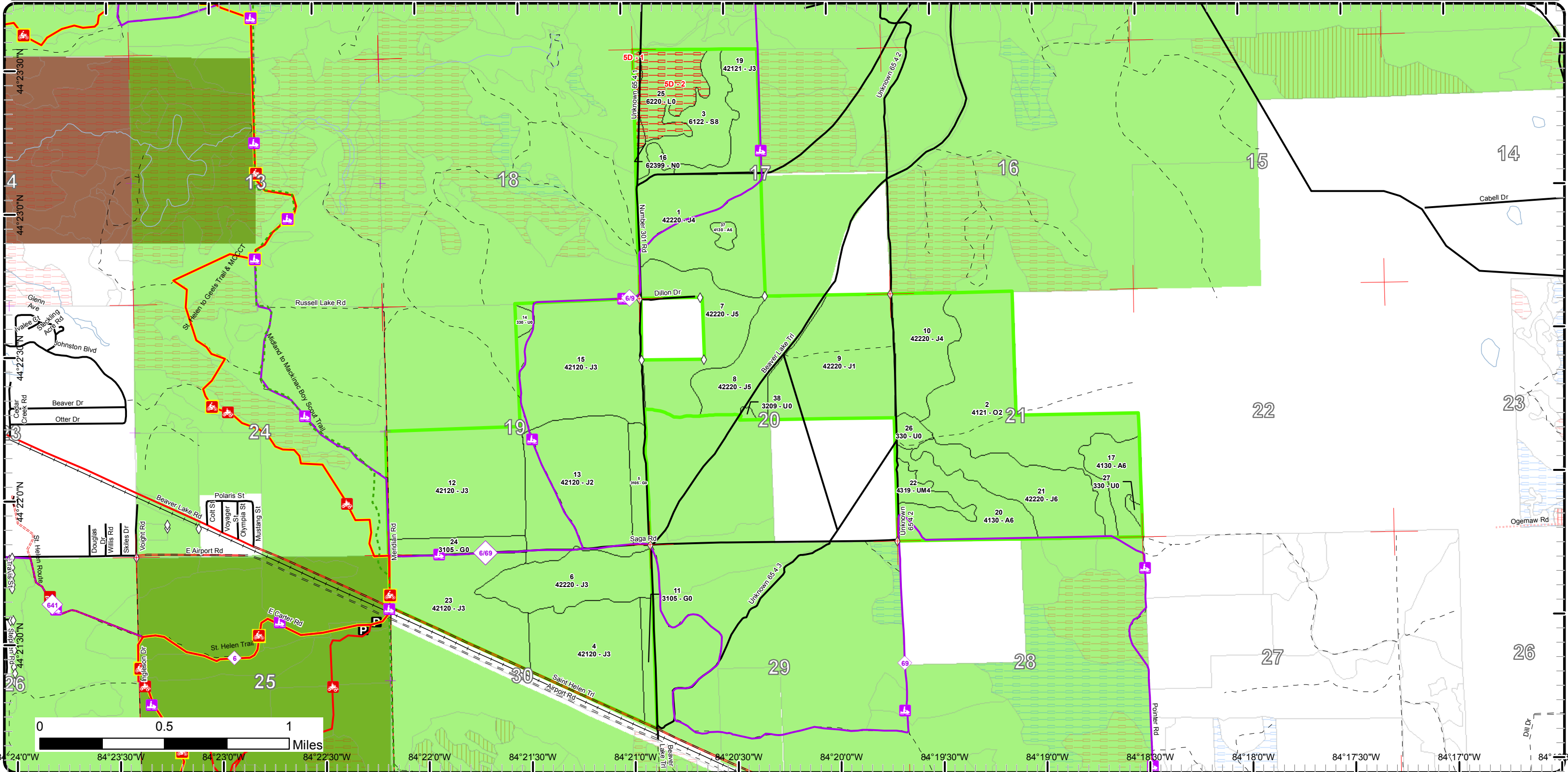


Special Conservation Areas & Site Conditions Map

Compartment: 185
 T23N 01E 17, 19-21, 30
 County: Ogemaw
 Unit: Roscommon
 Mgmt Area: Kirtland's Warbler
 YOE: 2017
 Acres: 1867 GIS Calculated
 Examiner: Doug Bates
 Map Revised: 7/27/2015
 Map Phase: Pre-Review

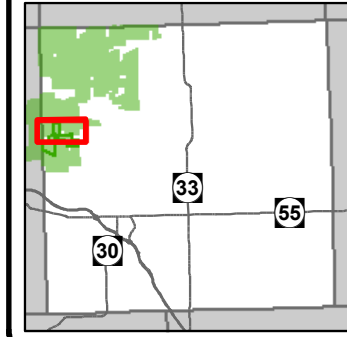


- + Remonumented Section Corners
- ◇ Field Grade GPS Corners
- Miris Corners
- County Paved Roads
- Paved Roads
- County Gravel Roads
- Gravel Roads
- - Poor Dirt Roads
- - County Poor Dirt Roads
- - - Closed Roads
- Bridges
- Culverts
- Airport
- Parking Lot
- MCCCT Trails
- ORV Trails
- ORV Routes
- Snowmobile Trails
- - - Designated Hiking Pathways
- - - Designated ATV
- - - Designated Snowmobile Trails
- - - Designated MCCCT Trails
- Railroads
- Rivers
- Stand Boundaries
- Site Condition
- Unavailable
- Unavailable Factors**
- 5D: Unproductive Forest Land
- Special Conservation Areas
- Kirtland Warbler Habitat
- Wildlife Management Areas
- Scramble Area

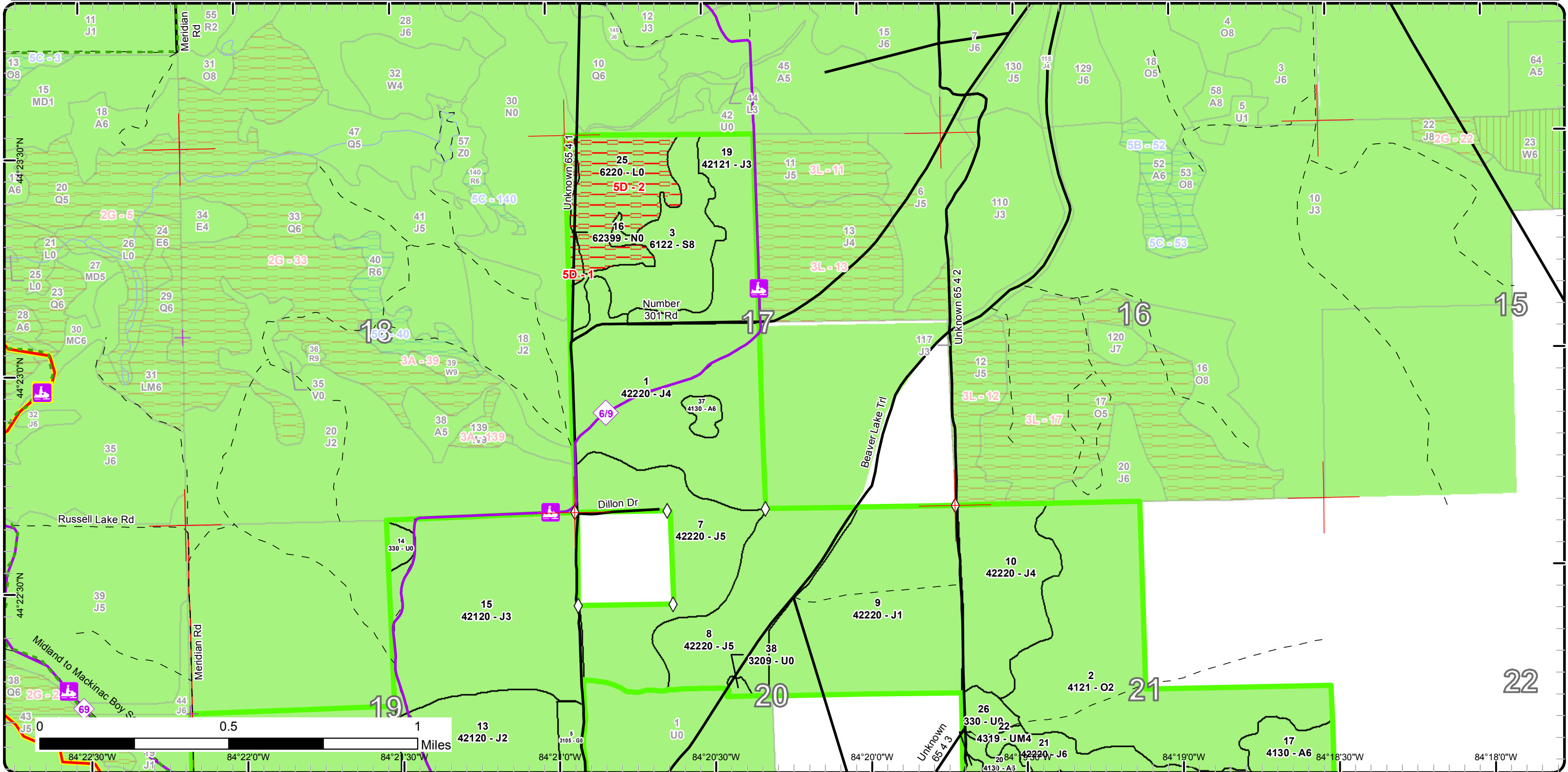


Special Conservation Areas & Site Conditions Map

Compartment: 185
 T23N 01E 17, 19-21, 30
 County: Ogemaw
 Unit: Roscommon
 Mgmt Area: Kirtland's Warbler
 YOE: 2017
 Acres: 1867 GIS Calculated
 Examiner: Doug Bates
 Map Revised: 7/27/2015
 Map Phase: Pre-Review

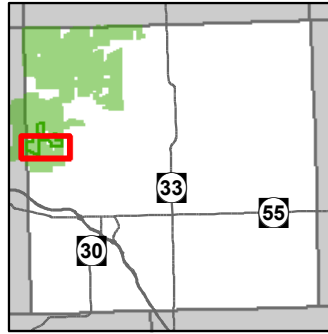


- Remonumented Section Corners
- Field Grade GPS Corners
- Miris Corners
- Paved Roads
- Poor Dirt Roads
- County Poor Dirt Roads
- MCCCT Trails
- Snowmobile Trails
- Designated Hiking Pathways
- Designated ATV
- Designated Snowmobile Trails
- Designated MCCCT Trails
- Rivers
- Stand Boundaries
- Site Condition
- Unavailable
- Unavailable Factors**
- 5D: Unproductive Forest Land
- Special Conservation Areas
- Kirtland Warbler Habitat

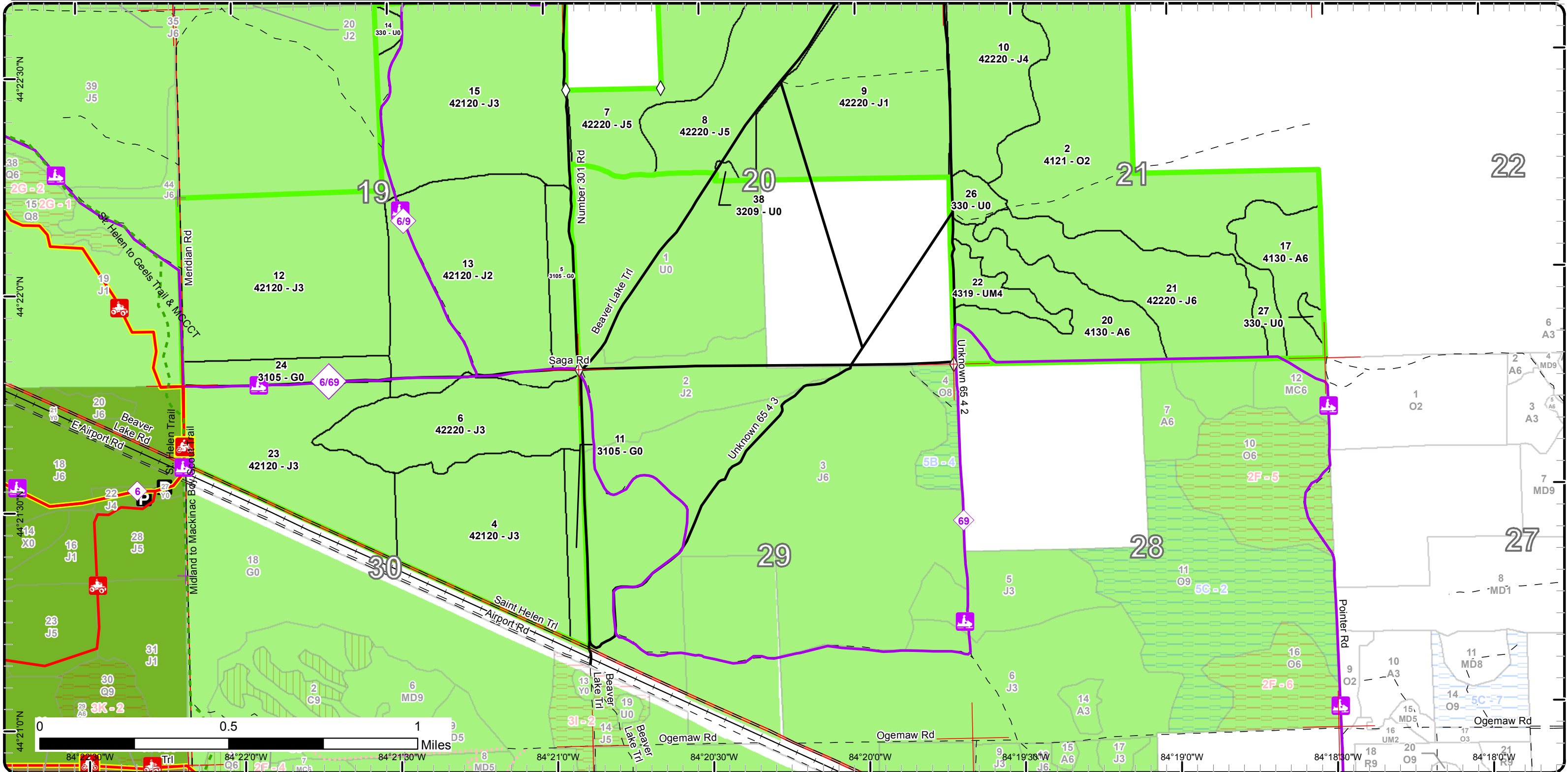


Special Conservation Areas & Site Conditions Map

Compartment: 185
 T23N 01E 17, 19-21, 30
 County: Ogemaw
 Unit: Roscommon
 Mgmt Area: Kirtland's Warbler
 YOE: 2017
 Acres: 1867 GIS Calculated
 Examiner: Doug Bates
 Map Revised: 7/27/2015
 Map Phase: Pre-Review



- Remonumented Section Corners
- Field Grade GPS Corners
- Miris Corners
- Paved Roads
- County Gravel Roads
- Gravel Roads
- Poor Dirt Roads
- County Poor Dirt Roads
- Closed Roads
- Parking Lot
- MCCCT Trails
- ORV Trails
- Designated Hiking Pathways
- Designated ATV
- Designated Snowmobile Trails
- Designated MCCCT Trails
- Railroads
- Stand Boundaries
- Special Conservation Areas
- Kirtland Warbler Habitat
- Scramble Area



Report 1 – Total Acres by Cover Type and Age Class



Age Class

	Non-Forest	0-9	10-19	20-29	30-39	40-49	50-59	60-69	70-79	80-89	90-99	100-109	110-119	120-129	130-139	140-149	150+	Uneven-Aged	Total
Aspen	0	0	0	0	109	5	0	0	0	0	0	0	0	0	0	0	0	0	114
Herbaceous Openland	63	0	0	0	0	0	0	0	0	0	0	0	0	0	0	0	0	0	63
Jack Pine	0	0	449	337	83	135	66	295	0	0	0	0	0	0	0	0	0	0	1365
Low-Density Trees	17	0	0	0	0	0	0	0	0	0	0	0	0	0	0	0	0	0	17
Lowland Shrub	49	0	0	0	0	0	0	0	0	0	0	0	0	0	0	0	0	0	49
Lowland Spruce/Fir	0	0	0	0	0	0	0	0	0	0	0	0	0	0	0	0	0	55	55
Marsh	6	0	0	0	0	0	0	0	0	0	0	0	0	0	0	0	0	0	6
Oak	0	0	177	0	0	0	0	0	0	0	0	0	0	0	0	0	0	0	177
Upland Mixed Forest	0	0	0	0	0	18	0	0	0	0	0	0	0	0	0	0	0	0	18
Upland Shrub	2	0	0	0	0	0	0	0	0	0	0	0	0	0	0	0	0	0	2
Total	137	0	626	337	192	158	66	295	0	0	0	0	0	0	0	0	0	55	1866



Report 2 – Treatment Summary

Roscommon Mgt. Unit
Year of Entry: 2017

Acres of Harvest

Compartment 185
Total Compartment Acres: 1,867

Commercial Harvest - 504
Harvests with Site Condition - 0
Next Step Harvest - 0
Habitat Cut - 0

Cover Type by Harvest Method

	Clearcut	Selection	Patch Clearcut	Seed Tree	Shelterwood	Thinning	Overstory Removal	Salvage	Other	Total Acres
Jack Pine	504	0	0	0	0	0	0	0	0	504
Total	504	0	0	0	0	0	0	0	0	504

Proposed and Next Step Treatments by Harvest Method

	Harvest	Site Prep	Planting	Seeding	Burning	Pesticide	Monitoring	Other	Non-Forest Mgt.	Total Acres
Current	504	0	0	0	0	0	0	0	0	504
Next Step	0	504	504	0	0	0	1008	0	0	2017
Total	504	504	504	0	0	0	1008	0	0	2521

S
t
a
n
d

Treatment Name	Acres	Stand CoverType	Size Density	Stand Age	BA Range	Treatment Type	Treatment Method	Cover Type Objective	Age Structure	Approval Status
9 71185_OutOfY OE-Cut	504.2	42220 - Natural Jack Pine	Poletimber Well	40	1-50	Harvest	Clearcut with Retention	42120 - Planted Jack Pine	Even-Aged	Draft Field Boundary

Habitat Cut: No**Site Condition:**

Prescription Clear-cut w/ reserves. Mark elongated islands to leave for jack pine retention and leave all red pine by spec. If necessary, girdle some red pine post-harvest. Plant to jack pine using the traditional kw weave. Mandatory chipping of slash required.

Specs:

Next Step Planting, Initial Plant; Monitoring, Artificial Regen(1yr); Monitoring, Artificial Regen(3yr); SitePrep, Trenching

Treatments:

Acceptable Will be replanted to jack pine

Regen:

Other Old next step comments:

Comment:

Proposed Start Date: 10/1 /2017

**Total Treatment
Acreage Proposed: 504.2**

Dominant Site Conditions

5D

Aspen	
Herbaceous Openland	
Jack Pine	
Low-Density Trees	
Lowland Shrub	49
Lowland Spruce/Fir	
Marsh	6
Oak	
Upland Mixed Forest	
Upland Shrub	
Total Forested Acres	55
Relative Percent	

**Due to limitations in the current Site Conditions Analysis tool, all nonforested acres are considered available. Future development will enable analysis of nonforested types.*

Site No.	Dominant Site Cond Availability	Dominant Site Condition	Acres	Other Site Condition	Other Site Condition	Other Site Condition	Other Site Condition
1	Unavailable	5D: Unproductive Forest Land	7	2G: Too wet (sensitive soils, does not include access issues)	Unspecified	Unspecified	Unspecified
Comments:							
2	Unavailable	5D: Unproductive Forest Land	49	2G: Too wet (sensitive soils, does not include access issues)	Unspecified	Unspecified	Unspecified
Comments:							

Mgt. Unit

Compartment: #Type!

Year of Entry:



Report 6 – PROPOSED SPECIAL CONSERVATION AREA* (SCA) DETAILS

* This is a partial list of SCAs for this compartment. Not included are those areas identified under other Department initiatives (Natural Rivers, Deer Wintering Areas, etc.). Those will be identified in separate, future map and report products.

SCA Name	SCA Category	Detail Type	Recommendation	Acres
Comments				



Report 7 – EXISTING SPECIAL CONSERVATION AREA DETAILS

* This is a list of SCA's for this compartment along with a 1/4 mile buffer surrounding the compartment. Refer to the Special Conservation Area Map for locations of the below listed Conservation Areas.

ERA = Ecological Reference Area
HCVA = High Conservation Value Area
SCA = Special Conservation Area

Conservation Area	Type	Description
HCVA	Designated Critical Habitat	Critical habitat areas are established via a consultative and cooperative process between the DNR and the U.S. Fish and Wildlife service for the recovery of threatened and endangered species, as governed by Part 365, Endangered Species Protection, of the Natural Resources and Environmental Protection Act, 1994 PA 451, and the Federal Endangered Species Act of 1973. This is an active program, with proposed species plans in various stages of review. As of now only two exist, Kirtland Warbler Habitat and Piping Plover Habitat.



	Level 4 Cover Type	Size Density	Acres	Stand Age	BA Range	General Comments:
1	42220 - Natural Jack Pine	Poletimber Well	132.6	66	1-50	OPIC - FMD: K WARBLER. STD IN CUT BLK 4. YOE 2007. BURN AFTER HARVESTING. YR OF ORIG 1949, 1966.
2	4121 - Oak, Aspen	Sapling Medium	177.4	15	Immature	Final harvest done finished in 2000. Very good regeneration of both oak and aspen coming in. The oak came back heavy on the stump sprouts and fair amounts of seeding. The stand is full of small aspen clones throughout and also will find scattered jack pine. On the high side for canopy closure percentage.
3	6122 - Black Spruce	Sawtimber Medium	55.1	90	51-80	An upland ridge along the south line then grades to low ground with tag alder thick in the sub-canopy. Some spruce coming in amongst it. The pine regeneration was found on the higher ground. The ground cover is leatherleaf. Hold this stand for another rotation since this compartment is being cut heavily with warbler cuts this rotation.
4	42120 - Planted Jack Pine	Sapling Well	107.4	11	Immature	Failed jack pine seeding done in early 2000's and replanted in 2004.
6	42220 - Natural Jack Pine	Sapling Well	78.1	28	Immature	Naturally regenerating jack pine stand resulting from the St. Helen forest fire in 1987
7	42220 - Natural Jack Pine	Poletimber Well	88.6	63	1-50	OPIC - FMD: K WARBLER. STD IN CUT BLK 4. YOE 2007. YR OF ORIG 1935, 1959. BUDWORM DAMAGE.
8	42220 - Natural Jack Pine	Poletimber Well	74.3	63	1-50	OPIC - FMD: K WARBLER. STD IN CUT BLK 1. YOE 1977. YR OF ORIG 1935, 1959. BUDWORM DAMAGE.
9	42220 - Natural Jack Pine	Poletimber Well	135.4	40	1-50	OPIC - FMD: K WARBLER. STD IN CUT BLK 1. YOE 1977. CUT, BURN, PLANT.
10	42220 - Natural Jack Pine	Poletimber Well	65.8	56	1-50	OPIC - FMD: K WARBLER. STD IN CUT BLK 1
12	42120 - Planted Jack Pine	Sapling Well	153.1	22	Immature	Kirtland Warbler planting done in the traditional weave in 1993.
13	42120 - Planted Jack Pine	Sapling Medium	147.8	11	Immature	Jack pine seeding done in 2004
15	42120 - Planted Jack Pine	Sapling Well	149.7	12	Immature	Jack pine planting done in 2003
17	4130 - Aspen	Poletimber Well	38.1	38	Unspecified	Dominant canopy species is aspen on the tops of ridges. The red maple is slowly entering more into the canopy and has taken over almost all the sub-canopy regeneration. On the northern fringe will find the log sized aspen mixed in with a fair amount of stump sprouted red maple. Hold for one more rotation due to the compartment being harvested heavily this rotation for Kirtland Warbler habitat.
19	42121 - Planted Jack Pine, Mixed Deciduous	Sapling Well	44.2	15	Immature	Seeded with Jack Pine using the Sigma Seeder in Fall 1999. Several areas where the aspen clones or chokecherry out competed the seeded jack pine. Diverse stand.

S
t
a
n
d

Roscommon Mgt. Unit

Report 8 – Forested Stands

Compartment: 185
Year of Entry: 2017

	Level 4 Cover Type	Size Density	Acres	Stand Age	BA Range	General Comments:
20	4130 - Aspen	Poletimber Well	70.5	38	Unspecified	Very nice aspen stand but chose not to harvest at this time because this compartment is being cut heavily this rotation for Kirtland Warbler habitat. The stand will hold fine until next rotation.
21	42220 - Natural Jack Pine	Poletimber Well	83.2	38	Unspecified	Stand harvested in 1977. Find no planting records or rows in the stand so believe it is all natural. Not the best quality jack pine but hold it one more rotation and treat with the adjoining aspen stands.
22	4319 - Mixed Upland Forest	Poletimber Poor	17.5	48	1-50	A very poor quality stand of mainly pin cherry with jack pine clumps. Recommend holding site one more rotation and then final harvesting with the aspen stand to the south. Afterward plant areas not filling in with the adjacent aspen to jack pine.
23	42120 - Planted Jack Pine	Sapling Well	106.0	22	Immature	Artificial jack pine stand for Kirtland Warbler planted in the weave pattern in 1993.
37	4130 - Aspen	Poletimber Well	5.3	47	81-110	OPIC - FMD: OI Stand Year Origin was 1968



Stand	Cover Type	Acres	Managed Site	General Comments:
5	3105 - Mixed Upland Herbaceous	21.9	Yes	Five chain wide wildfire fuel break for the jack pine stand to the immediate west. The stand is naturally filling in with mix of cherry, jack pine, and oak. It is a grass stand but will need to be treated in future years to remove the upcoming woody vegetation.
11	3105 - Mixed Upland Herbaceous	16.6	Yes	3.5 chain fire break left unplanted so can be treated in the future. The stand is regenerating back into oak and jack pine but is not fully stocked yet.
14	330 - Low-Density Trees	4.5	No	Jack Pine planting done in 2003 and had a wildfire in it resulting in the mortality of many stems. The canopy closure is now below 25 percent and is non-forested. Scattered jack pine, oak stump sprouts and choke cherry
16	62399 - Marsh (OI)	6.5	No	
24	3105 - Mixed Upland Herbaceous	24.0	Yes	5 chain wide fire break that is starting to regrow back to its former cover type. Mix of oak, jack pine and pin cherry. Not fully stocked but will become in the future unless treated.
25	6220 - Alder/willow	49.0	No	Tag alder marsh with scattered black spruce and jack pine spaced about.
26	330 - Low-Density Trees	9.7	No	Very sparse density treed opening
27	330 - Low-Density Trees	2.9	No	
38	3209 - Upland Shrub (OI)	1.7	No	OPIC - FMD: OI Stand Year Origin was