



# Compartment Review Presentation

Gaylord Forest Management Unit

Compartment 52210

Entry Year 2017

Acreage: 2,214

County Cheboygan

Management Area: Cheboygan Basin Moraines

---

**Revision Date:** 2015-09-23

**Stand Examiner:** John Scheele

**Legal Description:**

T35N - R01E, Sections 28-34

**Identified Planning Goals:**

To provide for the protection, integrated management and responsible use of a healthy, production, and undiminished forest resource base for the social, recreational, environmental, and economic benefit of the State of Michigan.

**Soil and topography:**

This compartment consist of four major soil type classifications. The far western portion of the compartment (Sections 29, 30, and 31) is part of the Cheboygan-Blue Lake association which is comprised of nearly level terrain with well drained to moderately well drained sandy soils. The Fairport-Onaway association is in sections 30, 31, 33, and 34 and consist of level to rolling terrain, having well drained loamy soils. Sections 29, 32, and 28 are part of the Grayling-Rubicon association with gently rolling terrain and excessively well drained sandy soils. The western half of sections 28 and 33 are comprised of the Detour-Brevort association having level terrain and poorly drained loamy-sandy loam soils.

**Ownership Patterns, Development, and Land Use in and Around the Compartment:**

State ownership in this compartment is relatively uniform with only three isolated 80 acre parcels. There is one 55 acre piece of privately owned land in the center of the compartment which includes the hydro-powered Kleber Dam. The remainder of the state-owned land is contiguous, with the exception of a several small parcels of private ownership near Kleber Lake. There are a few permanent and seasonal residences scattered within the compartment. Visual management is a concern along the well used county roads and along the shores of Kleber Lake. There are numerous camping and fishing sites around the Kleber Lake.

**Unique Natural Features:**

The Bald Eagle, Wood Turtle, and Eastern Pond Mussel have been documented in this compartment. There is potential for red-shouldered hawk, goshawk, eagle, osprey, and great blue heron rookery.

**Archeological, Historical, and Cultural Features:**

No known occurrences.

**Special Management Designations or Considerations:**

There are 2 small nominated Special Conservation Areas (SCA) in the compartment including 1 Natural Red Pine Type 2 Old-Growth Area and 1 Habitat Corridor Area.

**Watershed and Fisheries Considerations:**

This compartment contains portions of Milligan Creek and the Upper Black River as well as Kleber Pond, an impoundment of the Upper Black River. The Upper Black River is a designated trout stream downstream of Kleber Dam, and supports a population of lake sturgeon, a threatened species. Best Management practices should be followed to avoid erosion and sedimentation as well as for visual management. Protection of water quality near the sturgeon spawning grounds (downstream of Kleber Dam) should be identified in the compartment comments. Standard no clearcut buffers should be maintained adjacent to Kleber Pond, these buffers are not identified in the treatment comments.

**Wildlife Habitat Considerations:**

Timber management in this compartment should promote a diversity of forest age classes including early successional habitat for deer, turkey, grouse, and woodcock. Waterfowl and furbearers also are common.

**Mineral Resource and Development Concerns and/or Restrictions**

Surface sediments consist of coarse-textured till and minor dune sand. The glacial drift thickness varies between 0 and 50 feet. The Devonian Traverse Group subcrops below the glacial drift. The Traverse is used for cement and stone elsewhere in the state. A gravel pit is located one mile to the southwest. Due to the thin glacial till and abundance of clay in the area, sand and gravel potential may be limited. The nearest oil and gas production, the Niagaran Reef Trend, is located ten miles to the south. There is no known oil and gas potential in the area, although there are active leases jus tto the south.

**Vehicle Access:**

This compartment has very good access to most stands. There are several county and seasonal county roads, as well as state owned two-tracks within the compartment. The isolated parcels are accessible from county roads.

**Survey Needs:**

No survey needs needed at this time.

**Recreational Facilities and Opportunities:**

The compartment has an abundance of recreational opportunities including hunting and fishing. The North Eastern State Trail runs through this compartment. There are also 3 designated ORV/Cycle trail/routes within the boundaries of the compartment. These included the Michigan Cross County Cycle Trail, the Red Bridge ORV trail, and the Red Bridge ORV Route. There is also a public boat ramp at the end of Twin School Road.

**Fire Protection:**

There is minimal risk for a significant wildfire in the compartment due to the overall soil types and the number of nature fire breaks including water bodies, rivers, creeks, and streams. There is a moderate risk for smaller scale wildfires due to the number of recreational camping sites and private ownerships within the compartment and surrounding area.

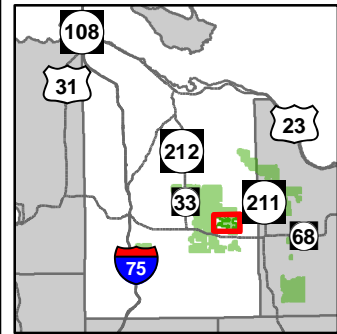
**Additional Compartment Information:****The following reports from the Inventory are attached:**

- Total Acres by Cover Type and Age Class**
- Cover Type by Harvest Method**
- Proposed Treatments – No Limiting Factors**
- Proposed Treatments – With Limiting Factors**
- Stand Details (Forested and Nonforested)**
- Dedicated and Proposed Special Conservation Areas**
- Site Condition Details**

**The following information is displayed, where pertinent, on the attached compartment maps:**

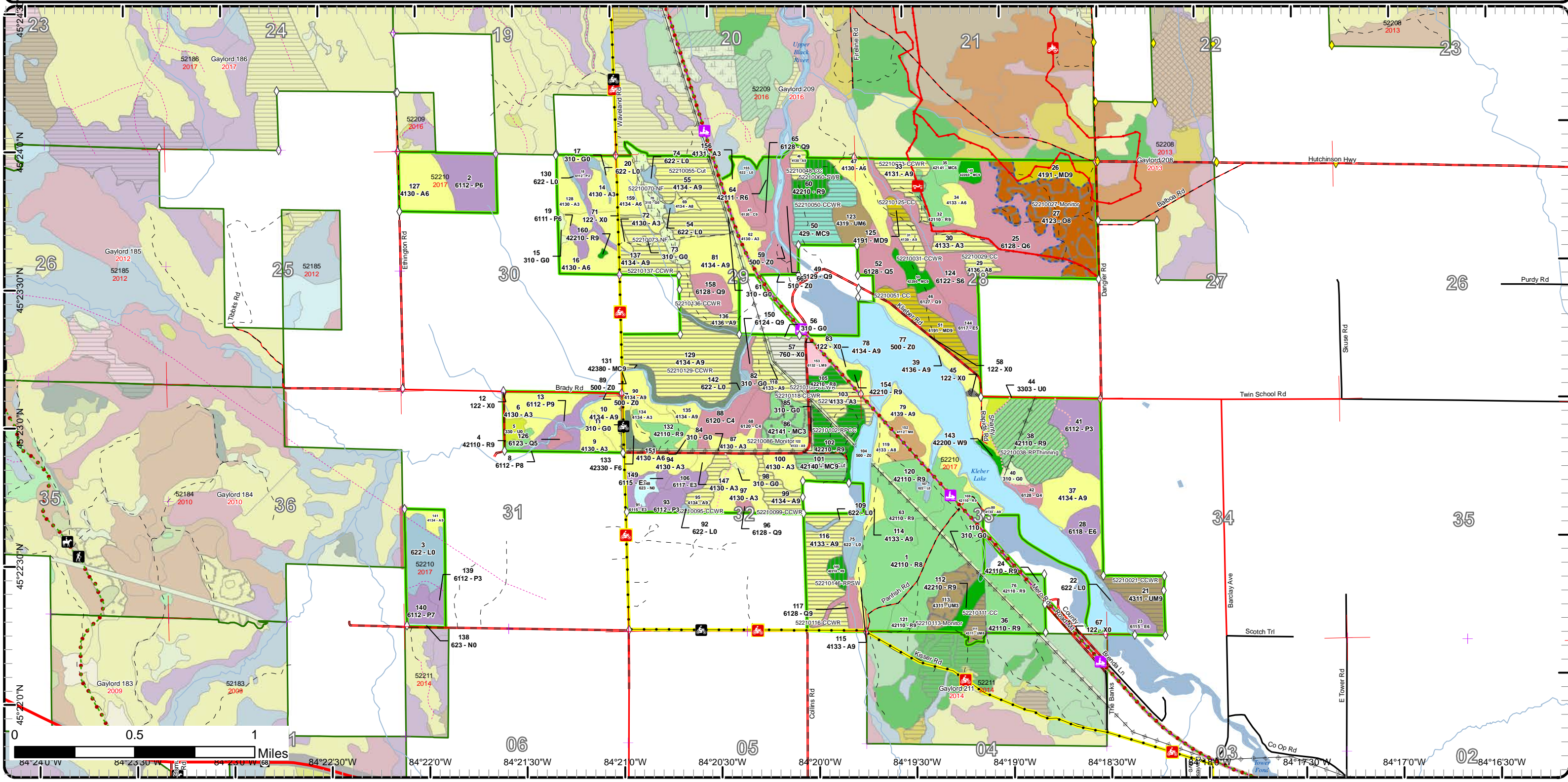
- Base feature information, stand boundaries, cover types, and numbers**
- Proposed treatments**
- Site condition boundaries**
- Details on the road access system**

# Cover Type & Treatments Map



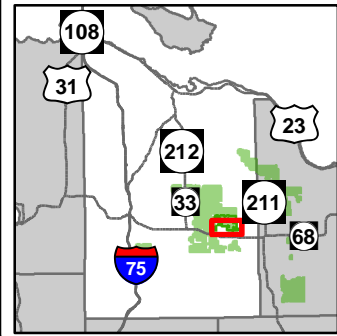
Compartment: 210  
 T35N,R01E, Sec. 28-34  
 County: Cheboygan  
 Unit: Gaylord  
 Mgmt Area: Cheboygan Basin Moraines  
 YOE: 2017  
 Acres: 2214 GIS Calculated  
 Examiner: John Scheele  
 Map Revised: 3/24/2016  
 Map Phase: Post-Review

- Miris Corners
- Remonumented Section Corners
- ◆ Survey Grade GPS Corners
- ◇ Field Grade GPS Corners
- 🏍️ Motorcycle Trails (SOS License)
- 🚲 MCCCT Trails
- 🚗 ORV Routes
- 🏂 Snowmobile Trails
- Designated Hiking Trails
- Designated Bicycle Trails
- Designated Equestrian Trails
- ORV License & Trail Permit
- ORV License
- Designated ATV
- Designated ORV Routes
- Designated Snowmobile Trails
- Michigan Cross Country Cycle Trail (MCCCT)
- Designated Railtrail
- County Paved Roads
- Paved Roads
- County Gravel Roads
- Gravel Roads
- Poor Dirt Roads
- County Poor Dirt Roads
- Trail (Non-Recreation)
- Closed Roads
- Rivers
- ⚡ Powerline
- ▭ Compartment Boundary
- ▭ Treatments with Site Conditions (pd)
- ▭ Treatments with Site Conditions
- ▭ Clearcut (w/Reserves)
- ▭ Other Treatment - See Comments
- ▭ Regeneration Survey
- ▭ Thinning (Crown, Low, Systematic)
- ▭ Shelter Wood (w/Reserves)
- ▭ Forest Covertype
- ▭ 411 - Northern Hardwood
- ▭ 412 - Oak Types
- ▭ 413 - Aspen
- ▭ 419 - Mixed Upland Deciduous
- ▭ 421 - Planted Pines
- ▭ 422 - Natural Pines
- ▭ 423 - Other Upland Conifers
- ▭ 429 - Mixed Upland Conifers
- ▭ 430 - Upland Mixed Fores
- ▭ 611 - Lowland Deciduous Forest
- ▭ 612 - Lowland Coniferous Forest
- ▭ 613 - Lowland Mixed Forest
- ▭ Non-Forest Covertype
- ▭ 122 - Roads/Parking Lot
- ▭ 310 - Herbaceous Openland
- ▭ 330 - Low Density Trees
- ▭ 500 - Water
- ▭ 622 - Lowland Shrub
- ▭ 623 - Emergent Wetland
- ▭ 790 - Other Bare/Sparsely Vegetated
- ▭ Lakes

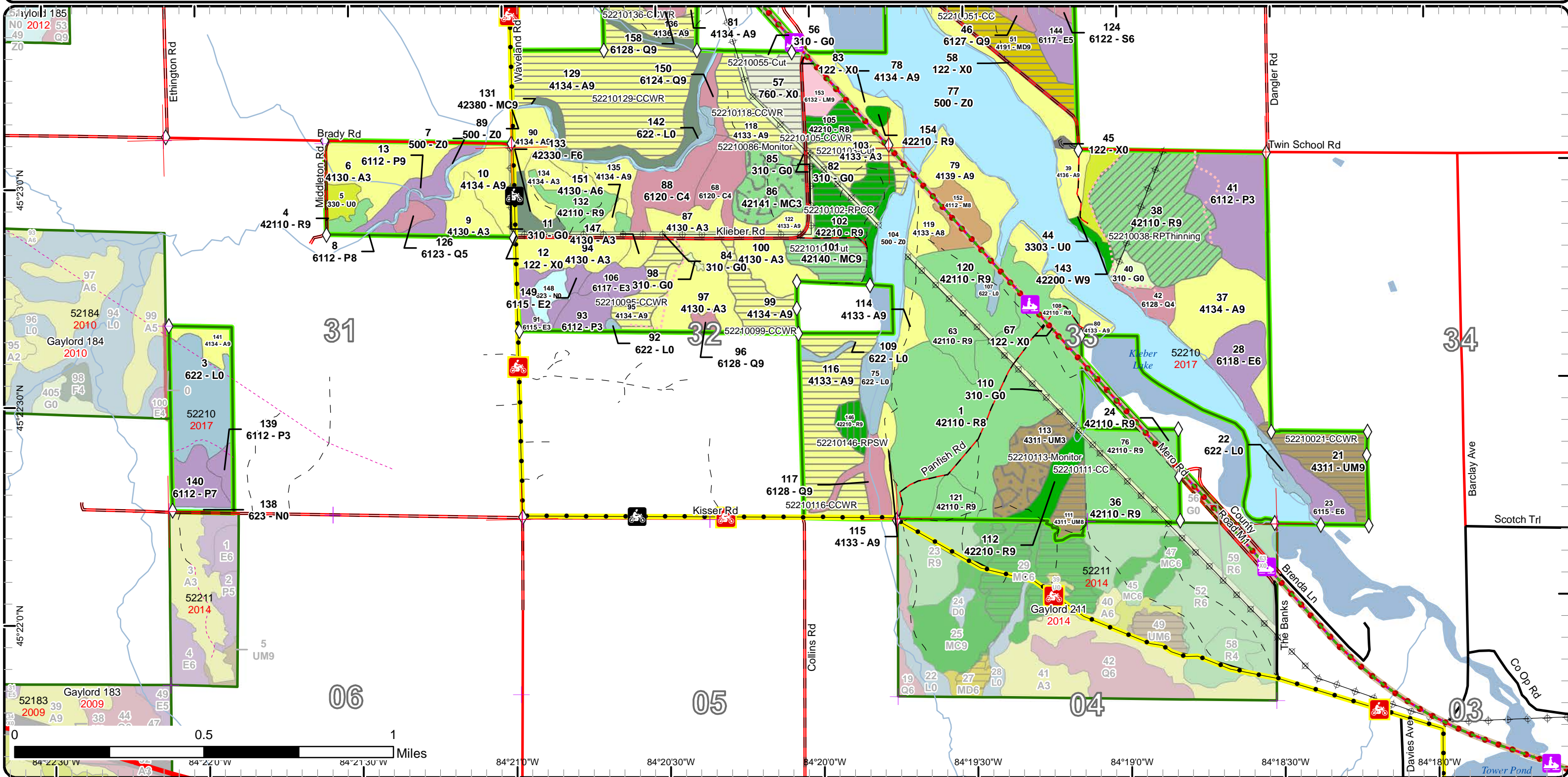


# Cover Type & Treatments Map

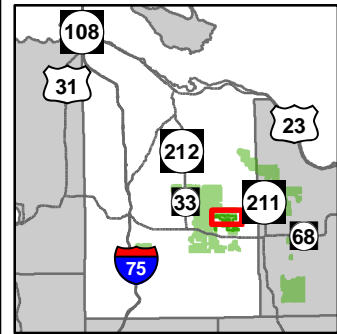
Compartment: 210  
 T35N,R01E, Sec. 28-34  
 County: Cheboygan  
 Unit: Gaylord  
 Mgmt Area: Cheboygan Basin Moraines  
 YOE: 2017  
 Acres: 2214 GIS Calculated  
 Examiner: John Scheele  
 Map Revised: 3/24/2016  
 Map Phase: Post-Review



- |  |   |  |  |
|--|---|--|--|
| <ul style="list-style-type: none"> <li>— Miris Corners</li> <li>— Remonumented Section Corners</li> <li>◇ Field Grade GPS Corners</li> <li>🏍 Motorcycle Trails (SOS License)</li> <li>🏍 MCCCT Trails</li> <li>🏍 Snowmobile Trails</li> <li>— Designated Hiking Trails</li> <li>— Designated Bicycle Trails</li> <li>● Designated Equestrian Trails</li> <li>● ORV License</li> <li>— Designated Snowmobile Trails</li> </ul> | <ul style="list-style-type: none"> <li>— Michigan Cross Country Cycle Trail (MCCCT)</li> <li>— Designated Railtrail</li> <li>— Highway</li> <li>— County Paved Roads</li> <li>— Paved Roads</li> <li>— County Gravel Roads</li> <li>— Gravel Roads</li> <li>— Poor Dirt Roads</li> <li>— County Poor Dirt Roads</li> <li>— Trail (Non-Recreation)</li> <li>— Closed Roads</li> <li>— Rivers</li> <li>— Powerline</li> <li>— Compartment Boundary</li> </ul> | <p><b>Treatments</b></p> <ul style="list-style-type: none"> <li>☐ Clearcut (w/Reserves)</li> <li>☐ Regeneration Survey</li> <li>☐ Thinning (Crown, Low, Systematic)</li> <li>☐ Shelter Wood (w/Reserves)</li> </ul> <p><b>Forest Covertype</b></p> <ul style="list-style-type: none"> <li>411 - Northern Hardwood</li> <li>413 - Aspen</li> <li>419 - Mixed Upland Deciduous</li> <li>421 - Planted Pines</li> <li>422 - Natural Pines</li> <li>423 - Other Upland Conifers</li> <li>430 - Upland Mixed Fores</li> <li>611 - Lowland Deciduous Forest</li> </ul> | <ul style="list-style-type: none"> <li>612 - Lowland Coniferous Forest</li> <li>613 - Lowland Mixed Forest</li> </ul> <p><b>Non-Forest Covertype</b></p> <ul style="list-style-type: none"> <li>122 - Roads/Parking Lot</li> <li>310 - Herbaceous Openland</li> <li>330 - Low Density Trees</li> <li>500 - Water</li> <li>622 - Lowland Shrub</li> <li>623 - Emergent Wetland</li> <li>790 - Other Bare/Sparsely Vegetated</li> <li>Lakes</li> </ul> |
|--|---|--|--|

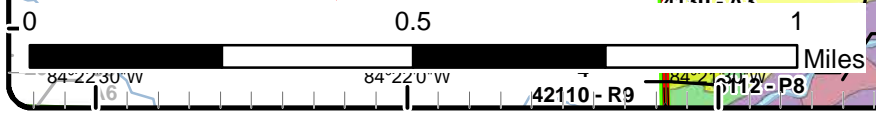
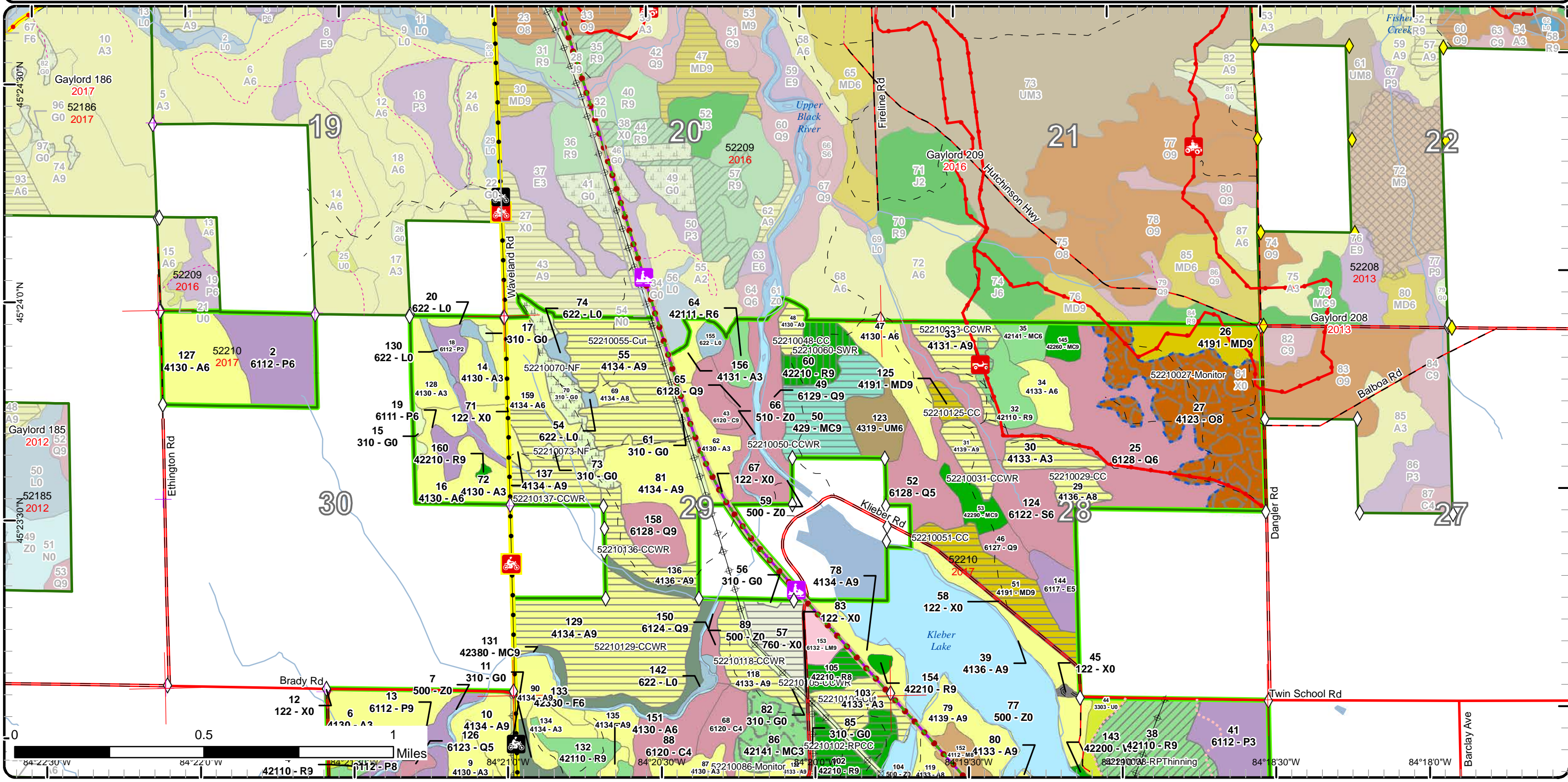


# Cover Type & Treatments Map



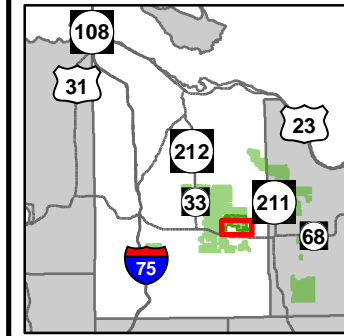
Compartment: 210  
 T35N,R01E, Sec. 28-34  
 County: Cheboygan  
 Unit: Gaylord  
 Mgmt Area: Cheboygan Basin Moraines  
 YOE: 2017  
 Acres: 2214 GIS Calculated  
 Examiner: John Scheele  
 Map Revised: 3/24/2016  
 Map Phase: Post-Review

- |   |   |  |   |  |
|---|---|--|---|--|
| <ul style="list-style-type: none"> <li>— Miris Corners</li> <li>— Remonumented Section Corners</li> <li>◆ Survey Grade GPS Corners</li> <li>◇ Field Grade GPS Corners</li> <li>🏍 Motorcycle Trails (SOS License)</li> <li>🏍 MCCCT Trails</li> <li>🏍 ORV Trails</li> <li>🏍 ORV Routes</li> <li>🏍 Snowmobile Trails</li> <li>— Designated Hiking Trails</li> <li>— Designated Bicycle Trails</li> </ul> | <ul style="list-style-type: none"> <li>● Designated Equestrian Trails</li> <li>● ORV License &amp; Trail Permit</li> <li>● ORV License</li> <li>— Designated ATV</li> <li>— Designated ORV Routes</li> <li>— Designated Snowmobile Trails</li> <li>— Michigan Cross Country Cycle Trail (MCCCT)</li> <li>— Designated Railtrail</li> <li>— County Paved Roads</li> <li>— Paved Roads</li> <li>— County Gravel Roads</li> <li>— Gravel Roads</li> <li>— Poor Dirt Roads</li> <li>— County Poor Dirt Roads</li> </ul> | <ul style="list-style-type: none"> <li>--- Trail (Non-Recreation)</li> <li>--- Closed Roads</li> <li>— Rivers</li> <li>⚡ Powerline</li> <li>▭ Compartment Boundary</li> <li>▭ Treatments with Site Conditions (pd)</li> <li>▭ Treatments with Site Conditions</li> <li>▭ Clearcut (w/Reserves)</li> <li>▭ Other Treatment - See Comments</li> <li>▭ Regeneration Survey</li> <li>▭ Thinning (Crown, Low, Systematic)</li> <li>▭ Shelter Wood (w/Reserves)</li> </ul> | <p><b>Forest Covertype</b></p> <ul style="list-style-type: none"> <li>411 - Northern Hardwood</li> <li>412 - Oak Types</li> <li>413 - Aspen</li> <li>419 - Mixed Upland Deciduous</li> <li>421 - Planted Pines</li> <li>422 - Natural Pines</li> <li>423 - Other Upland Conifers</li> <li>429 - Mixed Upland Conifers</li> <li>430 - Upland Mixed Fores</li> <li>611 - Lowland Deciduous Forest</li> <li>612 - Lowland Coniferous Forest</li> <li>613 - Lowland Mixed Forest</li> </ul> | <p><b>Non-Forest Covertype</b></p> <ul style="list-style-type: none"> <li>122 - Roads/Parking Lot</li> <li>310 - Herbaceous Openland</li> <li>330 - Low Density Trees</li> <li>500 - Water</li> <li>622 - Lowland Shrub</li> <li>790 - Other Bare/Sparsely Vegetated</li> <li>Lakes</li> </ul> |
|---|---|--|---|--|

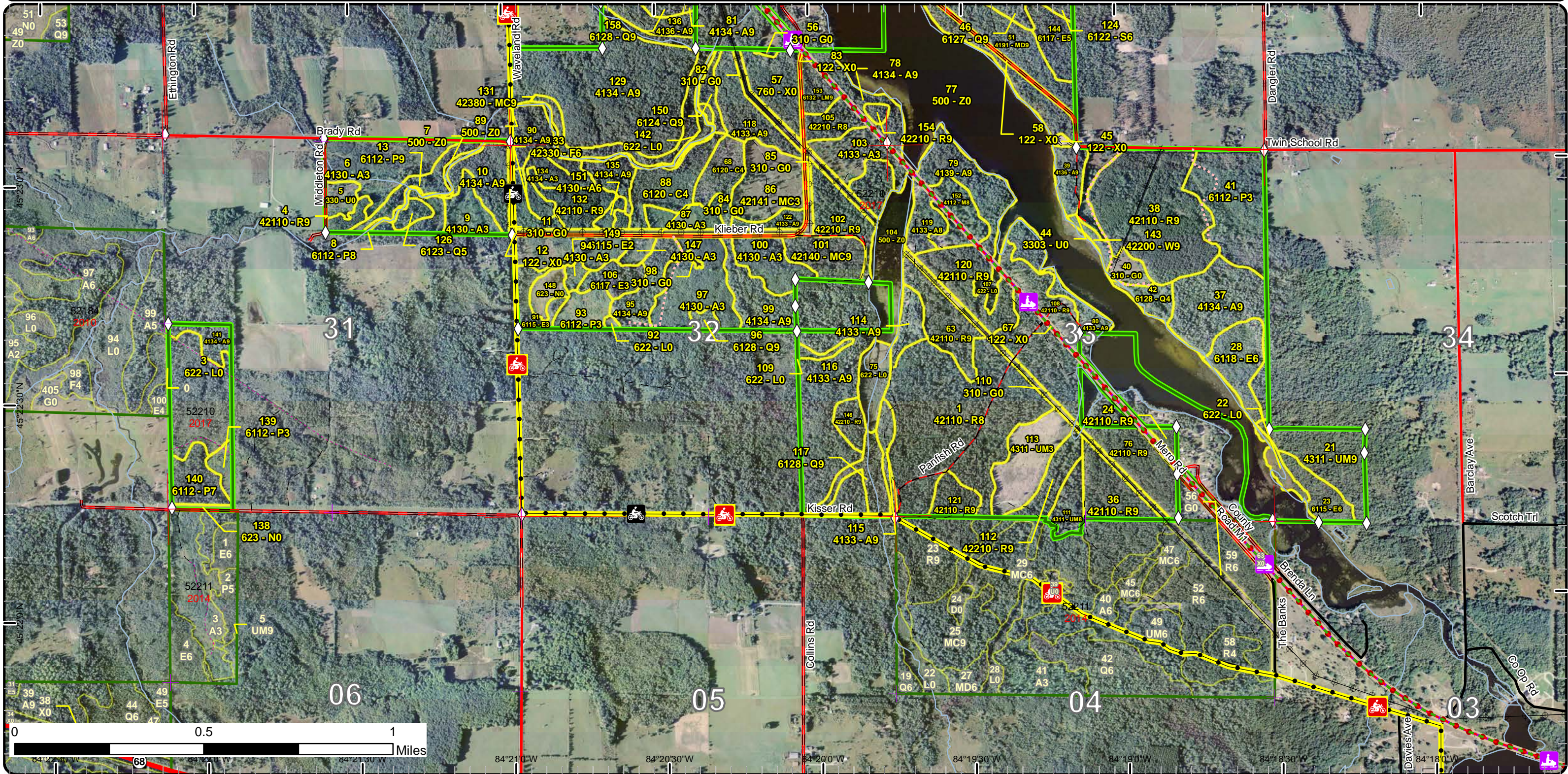


# Stand Boundary Map

Compartment: 210  
 T35N,R01E, Sec. 28-34  
 County: Cheboygan  
 Unit: Gaylord  
 Mgmt Area: Cheboygan Basin Moraines  
 YOE: 2017  
 Acres: 2214 GIS Calculated  
 Examiner: John Scheele  
 Map Revised: 3/24/2016  
 Map Phase: Post-Review

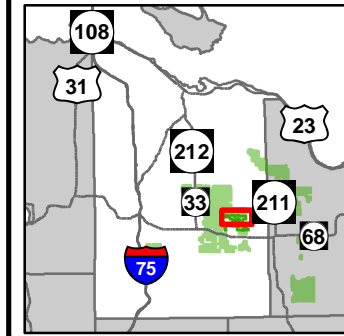


- Miris Corners
- + Remonumented Section Corners
- ◇ Field Grade GPS Corners
- Motorcycle Trails (SOS License)
- MCCCT Trails
- Snowmobile Trails
- - Designated Hiking Trails
- - Designated Bicycle Trails
- Designated Equestrian Trails
- ORV License
- Designated Snowmobile Trails
- Michigan Cross Country Cycle Trail (MCCCT)
- Designated Railtrail
- Highway
- County Paved Roads
- County Gravel Roads
- Gravel Roads
- - Poor Dirt Roads
- County Poor Dirt Roads
- - Trail (Non-Recreation)
- - Closed Roads
- Rivers
- Powerline
- Compartment Boundary
- Stand Boundaries
- 411 - Northern Hardwood
- 413 - Aspen
- 419 - Mixed Upland Deciduous
- 421 - Planted Pines
- 422 - Natural Pines
- 423 - Other Upland Conifers
- 430 - Upland Mixed Fores
- 611 - Lowland Deciduous Forest
- 612 - Lowland Coniferous Forest
- 613 - Lowland Mixed Forest
- 122 - Roads/Parking Lot
- 310 - Herbaceous Openland
- 330 - Low Density Trees
- 500 - Water
- 622 - Lowland Shrub
- 623 - Emergent Wetland
- 790 - Other Bare/Sparsely Vegetated

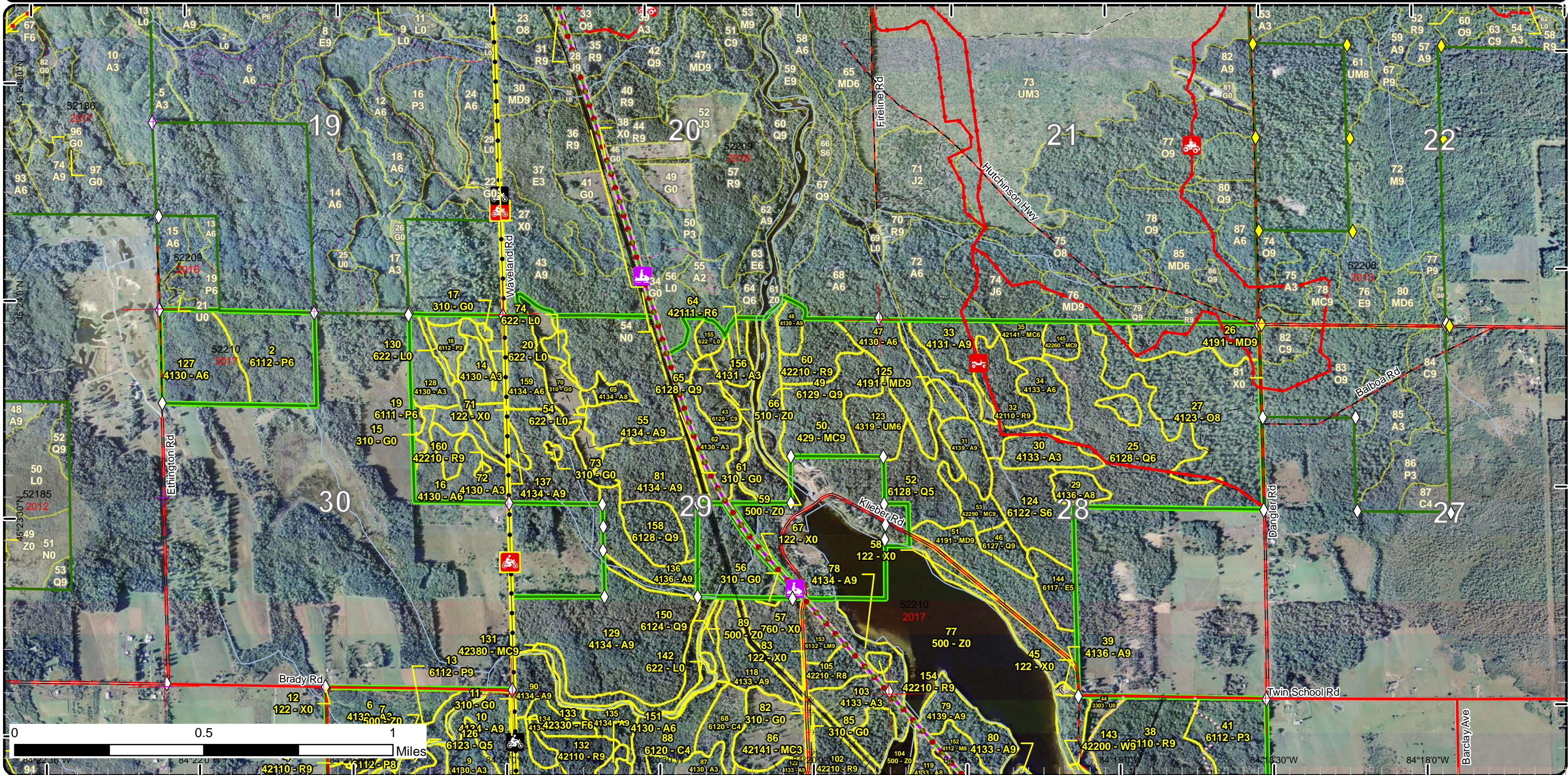


# Stand Boundary Map

Compartment: 210  
 T35N,R01E, Sec. 28-34  
 County: Cheboygan  
 Unit: Gaylord  
 Mgmt Area: Cheboygan Basin Moraines  
 YOE: 2017  
 Acres: 2214 GIS Calculated  
 Examiner: John Scheele  
 Map Revised: 3/24/2016  
 Map Phase: Post-Review

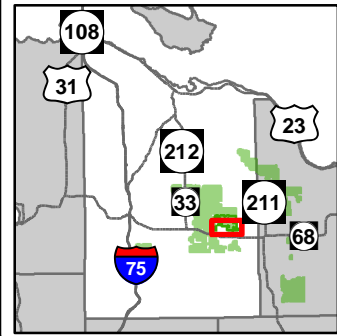


- Miris Corners
- + Remonumented Section Corners
- ◆ Survey Grade GPS Corners
- ◇ Field Grade GPS Corners
- Motorcycle Trails (SOS License)
- MCCCT Trails
- ORV Trails
- ORV Routes
- Snowmobile Trails
- - - Designated Hiking Trails
- - - Designated Bicycle Trails
- Designated Equestrian Trails
- ORV License & Trail Permit
- ORV License
- Designated ATV
- - - Designated ORV Routes
- Designated Snowmobile Trails
- Michigan Cross Country Cycle Trail (MCCCT)
- Designated Railtrail
- County Paved Roads
- Paved Roads
- County Gravel Roads
- Gravel Roads
- - - Poor Dirt Roads
- - - County Poor Dirt Roads
- - - Trail (Non-Recreation)
- - - Closed Roads
- Rivers
- Powerline
- Compartment Boundary
- Stand Boundaries
- 411 - Northern Hardwood
- 412 - Oak Types
- 413 - Aspen
- 419 - Mixed Upland Deciduous
- 421 - Planted Pines
- 422 - Natural Pines
- 423 - Other Upland Conifers
- 429 - Mixed Upland Conifers
- 430 - Upland Mixed Fores
- 611 - Lowland Deciduous Forest
- 612 - Lowland Coniferous Forest
- 613 - Lowland Mixed Forest
- 122 - Roads/Parking Lot
- 310 - Herbaceous Openland
- 330 - Low Density Trees
- 500 - Water
- 622 - Lowland Shrub
- 790 - Other Bare/Sparsely Vegetated

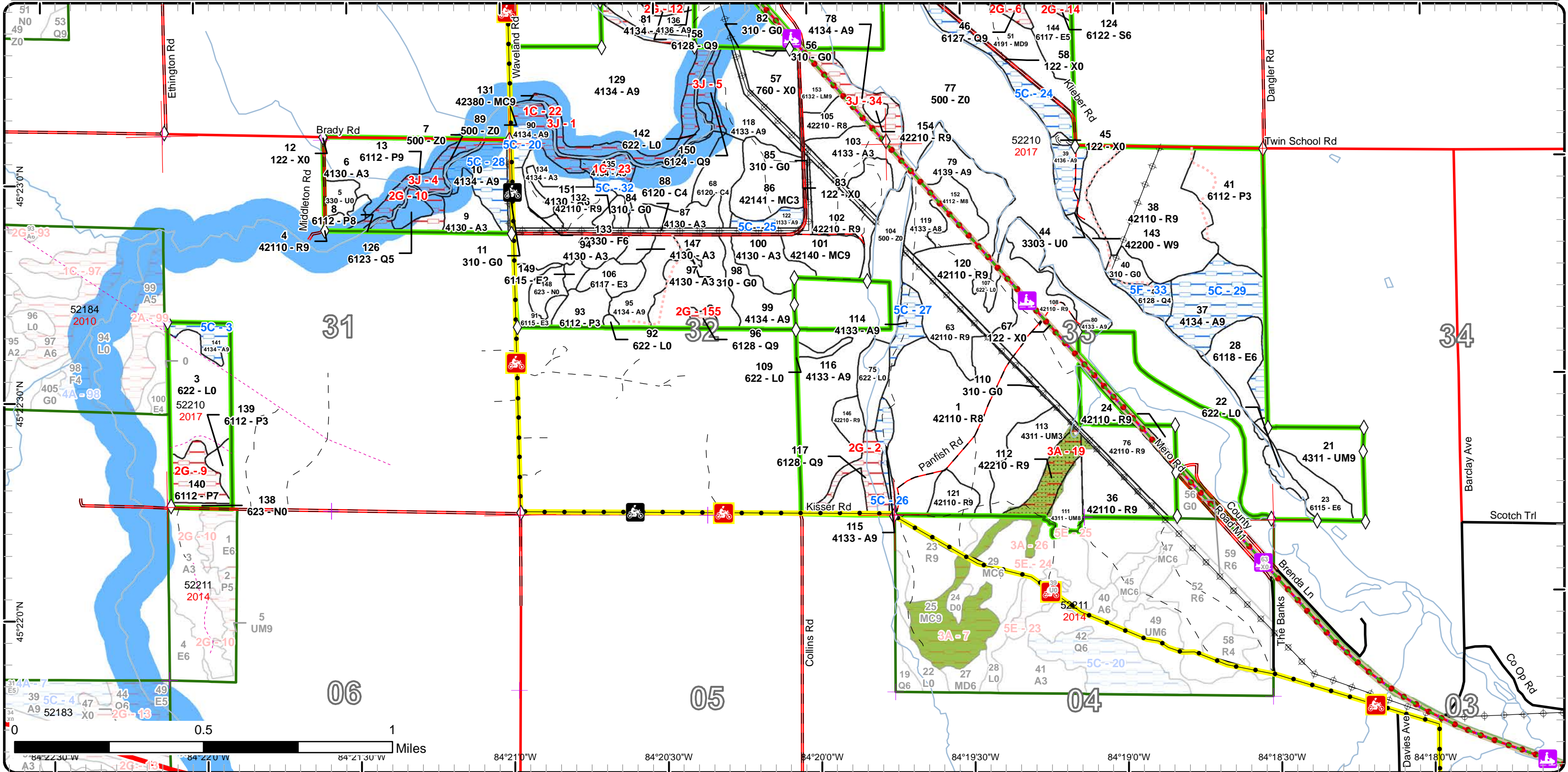


# Special Conservation Areas & Site Conditions Map

Compartment: 210  
 T35N,R01E, Sec. 28-34  
 County: Cheboygan  
 Unit: Gaylord  
 Mgmt Area: Cheboygan Basin Moraines  
 YOE: 2017  
 Acres: 2214 GIS Calculated  
 Examiner: John Scheele  
 Map Revised: 3/24/2016  
 Map Phase: Post-Review



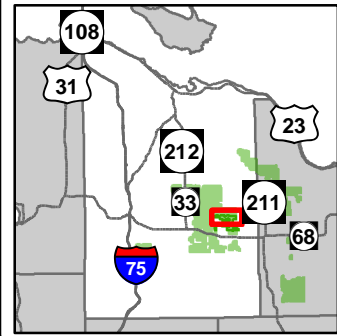
- Miris Corners
- + Remonumented Section Corners
- ◇ Field Grade GPS Corners
- Motorcycle Trails (SOS License)
- MCCCT Trails
- Snowmobile Trails
- - - Designated Hiking Trails
- - - Designated Bicycle Trails
- Designated Equestrian Trails
- ORV License
- Designated Snowmobile Trails
- Michigan Cross Country Cycle Trail (MCCCT)
- Designated Railtrail
- Highway
- Paved Roads
- County Gravel Roads
- Gravel Roads
- - - Poor Dirt Roads
- County Poor Dirt Roads
- - - Trail (Non-Recreation)
- - - Closed Roads
- Rivers
- Powerline
- Compartment Boundary
- SCA
- Available w/ Constraints
- Unavailable
- 5C: Delay treatment for age/size class diversity or exceptional site quality
- 1C: Other dept or div proc/practices
- 2G: Too wet (sensitive soils, does not include access issues)
- 3A: Potential old growth / biodiversity
- 3J: Water quality / BMPs (stream, river, or lake)
- Stand Boundaries
- Special Conservation Areas
- Cold Water Streams
- High Priority Trout Stream Buffer
- Verified Type 2 Old Growth
- Rail-Trail Corridor



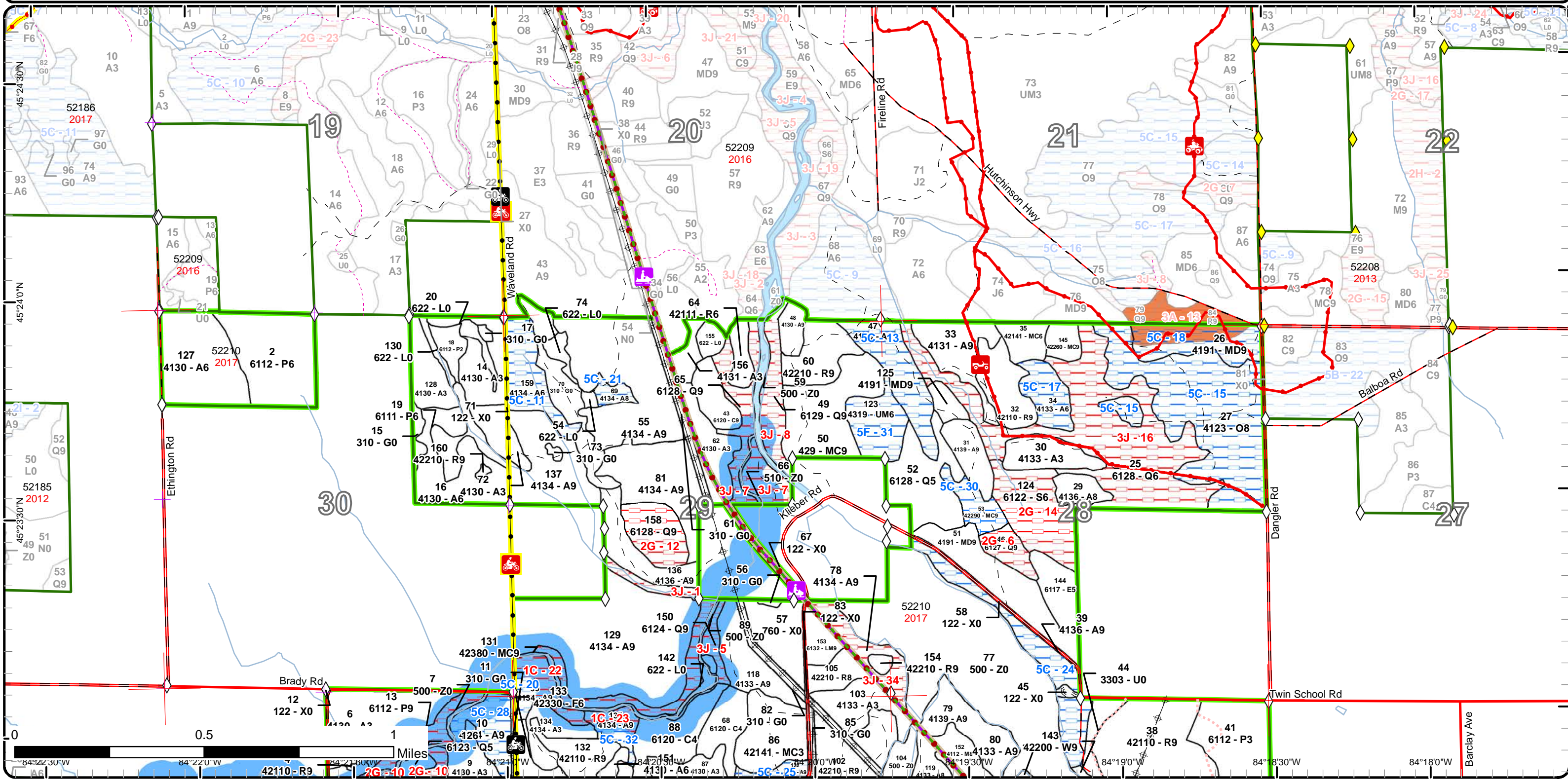


# Special Conservation Areas & Site Conditions Map

Compartment: 210  
 T35N,R01E, Sec. 28-34  
 County: Cheboygan  
 Unit: Gaylord  
 Mgmt Area: Cheboygan Basin Moraines  
 YOE: 2017  
 Acres: 2214 GIS Calculated  
 Examiner: John Scheele  
 Map Revised: 3/24/2016  
 Map Phase: Post-Review



- |   |  |  |  |
|---|--|--|--|
| <ul style="list-style-type: none"> <li>— Miris Corners</li> <li>— Remonumented Section Corners</li> <li>◆ Survey Grade GPS Corners</li> <li>◇ Field Grade GPS Corners</li> <li>🏍 Motorcycle Trails (SOS License)</li> <li>🏍 MCCCT Trails</li> <li>🏍 ORV Trails</li> <li>🏍 ORV Routes</li> <li>🏍 Snowmobile Trails</li> <li>— Designated Hiking Trails</li> <li>— Designated Bicycle Trails</li> </ul> | <ul style="list-style-type: none"> <li>● Designated Equestrian Trails</li> <li>● ORV License &amp; Trail Permit</li> <li>● ORV License</li> <li>— Designated ATV</li> <li>— Designated ORV Routes</li> <li>— Designated Snowmobile Trails</li> <li>— Michigan Cross Country Cycle Trail (MCCCT)</li> <li>— Designated Railtrail</li> <li>— County Paved Roads</li> <li>— County Gravel Roads</li> <li>— Gravel Roads</li> <li>— Poor Dirt Roads</li> <li>— County Poor Dirt Roads</li> </ul> | <ul style="list-style-type: none"> <li>— Trail (Non-Recreation)</li> <li>— Closed Roads</li> <li>— Rivers</li> <li>⊕ Powerline</li> <li>▭ Compartment Boundary</li> <li>— Available w/ Constraints</li> <li>— Unavailable</li> </ul> | <ul style="list-style-type: none"> <li>Special Conservation Areas</li> <li>— Cold Water Streams</li> <li>— Cold Water Lakes</li> <li>— High Priority Trout Stream Buffer</li> <li>— Rail-Trail Corridor</li> <li>— Other Habitat Area</li> </ul> |
|---|--|--|--|
- 5C: Delay treatment for age/size class diversity or exceptional site quality  
 1C: Other dept or div proc/practices  
 2G: Too wet (sensitive soils, does not include access issues)  
 3J: Water quality / BMPs (stream, river, or lake)  
 Stand Boundaries



Report 1 – Total Acres by Cover Type and Age Class



Age Class

	Non-Forest	0-9	10-19	20-29	30-39	40-49	50-59	60-69	70-79	80-89	90-99	100-109	110-119	120-129	130-139	140-149	150+	Uneven-Aged	Total
Aspen	0	85	86	39	32	0	48	24	122	309	17	0	0	0	0	0	0	0	762
Bare/Sparsely Vegetated	15	0	0	0	0	0	0	0	0	0	0	0	0	0	0	0	0	0	15
Cedar	0	0	0	0	0	0	0	0	0	0	0	37	0	0	0	0	0	0	37
Herbaceous Openland	58	0	0	0	0	0	0	0	0	0	0	0	0	0	0	0	0	0	58
Low-Density Trees	11	0	0	0	0	0	0	0	0	0	0	0	0	0	0	0	0	0	11
Lowland Aspen/Balsam Poplar	0	12	38	9	33	0	0	0	0	9	17	0	0	0	0	0	0	0	118
Lowland Conifers	0	0	0	6	0	0	0	27	0	0	80	35	22	13	0	0	0	0	183
Lowland Deciduous	0	0	0	17	15	0	0	9	11	0	0	0	0	0	0	0	0	0	52
Lowland Mixed Forest	0	0	0	0	0	0	0	0	0	0	0	0	7	0	0	0	0	0	7
Lowland Shrub	63	0	0	0	0	0	0	0	0	0	0	0	0	0	0	0	0	0	63
Lowland Spruce/Fir	0	0	0	0	0	0	0	0	0	0	25	0	0	0	0	0	0	0	25
Marsh	7	0	0	0	0	0	0	0	0	0	0	0	0	0	0	0	0	0	7
Mixed Upland Deciduous	0	0	0	0	0	0	0	4	25	19	0	0	0	0	0	0	0	0	48
Natural Mixed Pines	0	0	0	0	0	0	0	0	5	8	0	0	0	0	0	0	0	0	13
Northern Hardwood	0	0	0	0	0	0	0	0	0	12	0	0	0	0	0	0	0	0	12
Oak	0	0	0	0	0	0	0	0	0	73	0	0	0	0	0	0	0	0	73
Planted Mixed Pines	0	20	0	0	0	0	7	13	0	0	0	0	0	0	0	0	0	0	40
Red Pine	0	0	0	0	0	0	92	196	22	0	37	0	0	0	0	0	0	0	347
Upland Conifers	0	0	0	0	0	0	0	0	0	30	17	0	0	0	0	0	0	0	47
Upland Mixed Forest	0	20	0	0	0	15	0	0	22	8	0	0	0	0	0	0	0	0	65
Upland Spruce/Fir	0	0	0	0	0	0	5	0	0	0	0	0	0	0	0	0	0	0	5
Urban	29	0	0	0	0	0	0	0	0	0	0	0	0	0	0	0	0	0	29
Water	193	0	0	0	0	0	0	0	0	0	0	0	0	0	0	0	0	0	193
White Pine	0	0	0	0	0	0	0	3	0	0	0	0	0	0	0	0	0	0	3
<b>Total</b>	<b>376</b>	<b>137</b>	<b>124</b>	<b>71</b>	<b>80</b>	<b>15</b>	<b>152</b>	<b>276</b>	<b>207</b>	<b>468</b>	<b>193</b>	<b>72</b>	<b>29</b>	<b>13</b>	<b>0</b>	<b>0</b>	<b>0</b>	<b>0</b>	<b>2213</b>



## Report 2 – Treatment Summary

Gaylord Mgt. Unit

Compartment 210

Year of Entry:

Acres of Harvest

Total Compartment Acres: 2,214

Commercial Harvest - 559  
 Harvests with Site Condition - 0  
 Next Step Harvest - 0  
 Habitat Cut - 0

### Cover Type by Harvest Method

	Clearcut	Selection	Patch Clearcut	Seed Tree	Shelterwood	Thinning	Overstory Removal	Salvage	Other	Total Acres
Aspen	356	0	0	0	0	0	0	0	0	356
Mixed Upland Deciduous	29	0	0	0	0	0	0	0	0	29
Planted Mixed Pines	13	0	0	0	0	0	0	0	0	13
Red Pine	26	0	0	20	55	0	0	0	0	101
Upland Conifers	30	0	0	0	0	0	0	0	0	30
Upland Mixed Forest	30	0	0	0	0	0	0	0	0	30
<b>Total</b>	<b>484</b>	<b>0</b>	<b>0</b>	<b>0</b>	<b>20</b>	<b>55</b>	<b>0</b>	<b>0</b>	<b>0</b>	<b>559</b>

### Proposed and Next Step Treatments by Method

	Harvest	Site Prep	Planting	Seeding	Burning	Pesticide	Monitoring	Other	Non-Forest Mgt.	Total Acres
Current	559	0	0	0	0	0	113	0	18	690
Next Step	0	105	52	0	0	52	557	0	0	766
<b>Total</b>	<b>559</b>	<b>105</b>	<b>52</b>	<b>0</b>	<b>0</b>	<b>52</b>	<b>670</b>	<b>0</b>	<b>18</b>	<b>1456</b>



S t a n d	Treatment Name	Acres	Stand CoverType	Size Density	Stand Age	BA Range	Treatment Type	Treatment Method	Cover Type Objective	Age Structure	Approval Status
21	52210021-CCWR	22.0	4311 - Pine, Aspen Mix	Sawtimber Well	71	81-110	Harvest	Clearcut with Retention	4319 - Mixed Upland Forest	Even-Aged	Draft Field Boundary

**Habitat Cut: No**

**Site Condition:**

Prescription Harvest stand to regenerate. Include some of the larger Red Pine in the stand retention. Also mark an additional 10 BA of scattered Red Pine  
Specs: through out the stand to leave.

Next Step  
Treatments:

Acceptable Acceptable regeneration includes a moderate to well-stocked mix of aspen and coniferous species.  
Regen:

Other Access stand from the east through private property. Old next step comments:  
Comment:

Proposed Start Date: 10/01/2016

27	52210027-Monitor	72.7	4123 - Red Oak	Sawtimber Medium	81	51-80	Monitoring	Natural Regen (Re-Inventory)	412 - Oak Types	Uneven-Aged	Draft Field Boundary
----	------------------	------	----------------	------------------	----	-------	------------	------------------------------	-----------------	-------------	----------------------

**Habitat Cut: No**

**Site Condition: Age-Class or Site Quality**

Prescription Regeneration survey during inventory.  
Specs:

Next Step  
Treatments:

Acceptable Well stocked level of oak and deciduous species.  
Regen:

Other Old next step comments:  
Comment:

Proposed Start Date: 10/01/2016

29	52210029-CC	6.4	4136 - Aspen, Mixed Conifer	Sawtimber Medium	61	Unspecified	Harvest	Clearcut	413 - Aspen	Even-Aged	Draft Field Boundary
----	-------------	-----	-----------------------------	------------------	----	-------------	---------	----------	-------------	-----------	----------------------

**Habitat Cut: No**

**Site Condition:**

Prescription Harvest stand to regenerate. No cut oak and White Pine. No stand retention due to small stand size. Do not cut any trees with recreation trail  
Specs: markers, protect all trail sign post, and post 'logging activity' warning signs where necessary during harvest.

Next Step  
Treatments:

Acceptable Acceptable regeneration includes a moderate to well-stocked mix of aspen and deciduous species.  
Regen:

Other Need to cross a small low area from the north to reach stand. Old next step comments:  
Comment:

Proposed Start Date: 10/01/2016

31	52210031-CCWR	10.0	4139 - Aspen, Mixed Deciduous	Sawtimber Well	61	Unspecified	Harvest	Clearcut with Retention	413 - Aspen	Even-Aged	Draft Field Boundary
----	---------------	------	-------------------------------	----------------	----	-------------	---------	-------------------------	-------------	-----------	----------------------

**Habitat Cut: No**

**Site Condition:**

Prescription Harvest stand to regenerate. Leave pine and oak species.  
Specs:

Next Step  
Treatments:

Acceptable Acceptable regeneration includes a moderate to well-stocked mix of aspen and deciduous species.  
Regen:

Other Old next step comments:  
Comment:

Proposed Start Date: 10/01/2016



S t a n d	Treatment Name	Acres	Stand CoverType	Size Density	Stand Age	BA Range	Treatment Type	Treatment Method	Cover Type Objective	Age Structure	Approval Status
33	52210033-CCWR	19.5	4131 - Aspen, Oak	Sawtimber Well	81	Unspecified	Harvest	Clearcut with Retention	413 - Aspen	Even-Aged	Draft Field Boundary

**Habitat Cut: No****Site Condition:**

Prescription Harvest stand to regenerate. Expand cut area into the adjacent Red Pine stand to cut any aspen and poorer quality Red Pine where needed.

Specs: Leave the few larger diameter Red Pine within the stand and mark a couple oaks per acre to leave. Do not cut any trees with recreation trail markers, protect all trail sign post, and post 'logging activity' warning signs where necessary during harvest.

Next Step Treatments:

Acceptable Regen: Acceptable regeneration includes a moderate to well-stocked mix of aspen, deciduous and coniferous species.

Other Comment: Old next step comments:

Proposed Start Date: 10/01/2016

38	52210038-RPThinning	54.7	42110 - Planted Red Pine	Sawtimber Well	58	141-170	Harvest	Low Thinning	4211 - Planted Red Pine	Even-Aged	Draft Field Boundary
----	---------------------	------	--------------------------	----------------	----	---------	---------	--------------	-------------------------	-----------	----------------------

**Habitat Cut: No****Site Condition:**

Prescription Mark down to 100 - 120 BA. Mark double stems and poorly formed trees to cut.

Specs:

Next Step Treatments:

Acceptable Regen:

Other Comment: Old next step comments:

Proposed Start Date: 10/01/2016

48	52210048-CC	5.3	4130 - Aspen	Sawtimber Well	86	Unspecified	Harvest	Clearcut	413 - Aspen	Even-Aged	Draft Field Boundary
----	-------------	-----	--------------	----------------	----	-------------	---------	----------	-------------	-----------	----------------------

**Habitat Cut: No****Site Condition:**

Prescription Harvest stand to regenerate. No cut pine or oak. No retention due to small stand size. Keep treatment boundary away from edge of ridge to avoid any potential erosion problems.

Next Step Treatments:

Acceptable Regen: Acceptable regeneration includes a moderate to well-stocked mix of aspen and coniferous species.

Other Comment: Include stand with stands 50 and 60 when setting up sale. Old next step comments:

Proposed Start Date: 10/01/2016

50	52210050-CCWR	29.6	429 - Mixed Upland Conifers	Sawtimber Well	87	Unspecified	Harvest	Clearcut with Retention	429 - Mixed Upland Conifers	Even-Aged	Draft Field Boundary
----	---------------	------	-----------------------------	----------------	----	-------------	---------	-------------------------	-----------------------------	-----------	----------------------

**Habitat Cut: No****Site Condition:**

Prescription Harvest stand to regenerate. No cut Red Pine and oak. Mark some White Pine to leave. Permission to access to stand through private property along west side of the rearing facility has been obtained. Cut in winter.

Next Step Treatments:

Acceptable Regen: Acceptable regeneration includes a moderate to well-stocked mix of coniferous and deciduous species.

Other Comment: Include stands 60 and 48 is sale. Old next step comments:

Proposed Start Date: 10/01/2016



S t a n d	Treatment Name	Acres	Stand CoverType	Size Density	Stand Age	BA Range	Treatment Type	Treatment Method	Cover Type Objective	Age Structure	Approval Status
51	52210051-CC	25.1	4191 - Mixed Upland Deciduous with Conifer	Sawtimber Well	71	111-140	Harvest	Clearcut with Retention	4199 - Other Mixed Upland Deciduous	Even-Aged	Draft Field Boundary

**Habitat Cut: No**

**Site Condition:**

Prescription Harvest stand to regenerate. No cut Red Pine, White Pine, or oak. Put stand retention in low ground areas.

Specs:

Next Step  
Treatments:

Acceptable Regen: Acceptable regeneration includes a moderate to well-stocked mix of deciduous species.

Other Comment:

Old next step comments:

Proposed Start Date:

10/01/2016

55	52210055-Cut	74.5	4134 - Aspen, Spruce/Fir	Sawtimber Well	71	Unspecified	Harvest	Clearcut	413 - Aspen	Even-Aged	Draft Field Boundary
----	--------------	------	--------------------------	----------------	----	-------------	---------	----------	-------------	-----------	----------------------

**Habitat Cut: No**

**Site Condition:**

Prescription Within payment units 1, 2, and 3, cut all trees that are 2 inches or more at dbh except all ash, cedar, hemlock, cherry, and oak. In addition, white pine and red pine are not to be cut in unit 3.

Specs:

Next Step  
Treatments:

Acceptable Regen: Acceptable regeneration will satisfy the minimum stocking levels of aspen.

Other Comment:

Stands 30 and 57 were completed in 2014. Old next step comments:

Proposed Start Date:

10/01/2016

60	52210060-SWR	15.0	42210 - Natural Red Pine	Sawtimber Well	91	81-110	Harvest	Shelterwood with Retention	4221 - Natural Red Pine	Even-Aged	Draft Field Boundary
----	--------------	------	--------------------------	----------------	----	--------	---------	----------------------------	-------------------------	-----------	----------------------

**Habitat Cut: No**

**Site Condition:**

Prescription Harvest stand to regenerate. Cut all species except oak and the currently teal-marked Red Pine trees. Also mark some large DBH White Pine to leave. Goal should be to have 30 - 50 feet of Red and White Pine residual BA. Winter cut to avoid access problems around rearing facility. Include with stands 48 and 50 when setting up sale.

Specs:

Next Step  
Treatments:

Acceptable Regen: Acceptable regeneration includes a moderate to well-stocked mix of pine and deciduous species.

Other Comment:

Stand was previously prescribed to cut but was not because of access problems. Individual leave trees are still marked with teal paint. Very nice, tall Red Pine. Some larger than 18" DBH White Pine are scattered throughout stand. Stand BA is 110. Old next step comments:

Proposed Start Date:

10/01/2016

70	52210070-NF	17.0	310 - Herbaceous Openland	Nonstocked		Unspecified	NonForestMgt	Other - Specify	310 - Herbaceous Openland		Draft Field Boundary
----	-------------	------	---------------------------	------------	--	-------------	--------------	-----------------	---------------------------	--	----------------------

**Habitat Cut: No**

**Site Condition:**

Prescription Brush, mow, plant, burn and/or herbicide to maintain opening. Planting of hard and soft mast.

Specs:

Next Step  
Treatments:

Acceptable Regen:

Other Comment:

Old next step comments:

Proposed Start Date:

10/01/2016



S t a n d	Treatment Name	Acres	Stand CoverType	Size Density	Stand Age	BA Range	Treatment Type	Treatment Method	Cover Type Objective	Age Structure	Approval Status
73	52210073-NF	0.8	310 - Herbaceous Openland	Nonstocked		Unspec ified	NonForestMgt	Other - Specify	310 - Herbaceous Openland		Draft Field Boundary

**Habitat Cut: No****Site Condition:**

Prescription Brush, mow, plant, burn and/or herbicide to maintain opening. Planting of hard and soft mast.

Specs:

Next Step

Treatments:

Acceptable

Regen:

Other Old next step comments:

Comment:

Proposed Start Date: 10/01/2016

81	52210081-Cut- SBW	27.6	4134 - Aspen, Spruce/Fir	Sawtimber Well	71	Unspec ified	Harvest	Clearcut	413 - Aspen	Even-Aged	Draft Proposal
----	----------------------	------	-----------------------------	-------------------	----	-----------------	---------	----------	-------------	-----------	----------------

**Habitat Cut: No****Site Condition:**

Prescription Harvest for SBW salvage. Consider swapping treatment acres with another prescribed stand due to heavy amount of prescribed acreage in this compartment.

Specs: Clearcut to 2" dbh retaining underrepresented species. Retention will be placed around low pockets and/or adjacent to the Q-type.

Next Step

Treatments:

Acceptable Acceptable regeneration includes moderate to well stocked aspen and balsam fir.

Regen:

Other Old next step comments:

Comment:

Proposed Start Date: 10/01/2016

86	52210086- Monitor	19.9	42141 - Planted Mixed Pine, Mixed Deciduous	Sapling Well	6	Immatu re	Monitoring	Artificial Regen(3yr)	4211 - Planted Red Pine	Even-Aged	Draft Field Boundary
----	----------------------	------	---	-----------------	---	--------------	------------	--------------------------	----------------------------	-----------	-------------------------

**Habitat Cut: No****Site Condition:**

Prescription Regeneration survey.

Specs:

Next Step

Treatments:

Acceptable Medium to well stocked level of Red Pine.

Regen:

Other Old next step comments:

Comment:

Proposed Start Date: 10/01/2016

95	52210095- CCWR	12.4	4134 - Aspen, Spruce/Fir	Sawtimber Well	81	Unspec ified	Harvest	Clearcut with Retention	413 - Aspen	Even-Aged	Draft Field Boundary
----	-------------------	------	-----------------------------	-------------------	----	-----------------	---------	----------------------------	-------------	-----------	-------------------------

**Habitat Cut: No****Site Condition:**

Prescription Harvest stand to regenerate. No cut Red or White Pine. Stay out of low ground areas.

Specs:

Next Step

Treatments:

Acceptable Acceptable regeneration includes a moderate to well-stocked mix of aspen and coniferous species.

Regen:

Other Old next step comments:

Comment:

Proposed Start Date: 10/01/2016



S t a n d	Treatment Name	Acres	Stand CoverType	Size Density	Stand Age	BA Range	Treatment Type	Treatment Method	Cover Type Objective	Age Structure	Approval Status
99	52210099- CCWR	14.9	4134 - Aspen, Spruce/Fir	Sawtimber Well	81	Unspec ified	Harvest	Clearcut with Retention	413 - Aspen	Even-Aged	Draft Field Boundary

**Habitat Cut: No****Site Condition:**

Prescription Harvest stand to regenerate. No cut White Pine or hemlock. Put retention around drainage and low area along west edge of stand.  
Specs:

Next Step  
Treatments:

Acceptable Acceptable regeneration includes a moderate to well-stocked mix of aspen and coniferous species.  
Regen:

Other Old next step comments:  
Comment:

Proposed Start Date: 10/01/2016

101	52210101-Cut	13.2	42140 - Planted Mixed Pine	Sawtimber Well	63	111- 140	Harvest	Clearcut	4211 - Planted Red Pine	Even-Aged	Draft Field Boundary
-----	--------------	------	-------------------------------	-------------------	----	-------------	---------	----------	----------------------------	-----------	-------------------------

**Habitat Cut: No****Site Condition:**

Prescription Harvest stand and replant to Red Pine. Cut all trees greater than 2 inch diameter except oak and chip tops. Cut in summer so stumps are cut  
Specs: low to ground.

Next Step SitePrep, Roller Chopping; SitePrep, Trenching; Pesticide, Aerial; Planting, Initial Plant; Monitoring, Artificial Regen(1yr)  
Treatments:

Acceptable Well stocked level of Red Pine.  
Regen:

Other Old next step comments:  
Comment:

Proposed Start Date: 10/01/2016

102	52210102- RPCC	18.0	42210 - Natural Red Pine	Sawtimber Well	76	81-110	Harvest	Clearcut with Retention	4211 - Planted Red Pine	Even-Aged	Draft Field Boundary
-----	-------------------	------	-----------------------------	-------------------	----	--------	---------	----------------------------	----------------------------	-----------	-------------------------

**Habitat Cut: No****Site Condition:**

Prescription Harvest stand and replant to Red Pine. Cut all trees greater than 2 inch diameter except oak and chip tops. Cut in summer so stumps are cut  
Specs: low to ground. Do not cut any trees with recreation trail markers, protect all trail sign post, and post 'logging activity' warning signs where necessary during harvest.

Next Step SitePrep, Roller Chopping; SitePrep, Trenching; Pesticide, Aerial; Planting, Initial Plant; Monitoring, Artificial Regen(1yr)  
Treatments:

Acceptable Well stocked level of Red Pine.  
Regen:

Other Old next step comments:  
Comment:

Proposed Start Date: 10/01/2016

103	52210103-Cut	13.7	4133 - Aspen, Mixed Pine	Sapling Well	6	Immatur re	Harvest	Clearcut with Retention	4211 - Planted Red Pine	Even-Aged	Draft Field Boundary
-----	--------------	------	-----------------------------	-----------------	---	---------------	---------	----------------------------	----------------------------	-----------	-------------------------

**Habitat Cut: No****Site Condition:**

Prescription Clear cut residual white pine from harvest last entry to prepare the site for planting efforts this YOY with adjacent stands. Do not cut any trees  
Specs: with recreation trail markers, protect all trail sign post, and post 'logging activity' warning signs where necessary during harvest.

Next Step SitePrep, Roller Chopping; SitePrep, Trenching; Pesticide, Aerial; Planting, Initial Plant; Monitoring, Artificial Regen(1yr)  
Treatments:

Acceptable Well stocked planted RP  
Regen:

Other Old next step comments:  
Comment:

Proposed Start Date: 10/01/2016





S t a n d	Treatment Name	Acres	Stand CoverType	Size Density	Stand Age	BA Range	Treatment Type	Treatment Method	Cover Type Objective	Age Structure	Approval Status
105	52210105- CCWR	7.5	42210 - Natural Red Pine	Sawtimber Medium	91	51-80	Harvest	Clearcut with Retention	4211 - Planted Red Pine	Even-Aged	Draft Field Boundary

**Habitat Cut: No****Site Condition:**

Prescription Harvest stand and replant to Red Pine. Cut all trees greater than 2 inch diameter except oak and chip tops. Place retention area between stand  
Specs: 105 and 103. Include some of the large Red Pine within the retention area. Also mark a few scattered Red Pine trees to leave. Cut in summer so stumps are cut low to ground. Do not cut any trees with recreation trail markers, protect all trail sign post, and post 'logging activity' warning signs where necessary during harvest.

Next Step SitePrep, Roller Chopping; SitePrep, Trenching; Pesticide, Aerial; Planting, Initial Plant; Monitoring, Artificial Regen(1yr)  
Treatments:

Acceptable Well stocked level of Red Pine.  
Regen:

Other Old next step comments:  
Comment:

Proposed Start Date: 10/01/2016

111	52210111-CC	7.9	4311 - Pine, Aspen Mix	Sawtimber Medium	81	81-110	Harvest	Clearcut	4319 - Mixed Upland Forest	Even-Aged	Draft Field Boundary
-----	-------------	-----	---------------------------	---------------------	----	--------	---------	----------	-------------------------------	-----------	-------------------------

**Habitat Cut: No****Site Condition:**

Prescription Harvest stand to regenerate. No cut oak. Mark a few Red Pine to leave. No stand retention due to small stand size. Cut in summer to  
Specs: encourage scarification and natural regeneration. May want to add stand to timber sale to the south.

Next Step  
Treatments:

Acceptable Acceptable regeneration includes a moderate to well-stocked mix of aspen and coniferous species.  
Regen:

Other Old next step comments:  
Comment:

Proposed Start Date: 10/01/2015

113	52210113- Monitor	20.4	4311 - Pine, Aspen Mix	Sapling Well	4	Immatur re	Monitoring	Artificial Regen(3yr)	4211 - Planted Red Pine	Even-Aged	Draft Field Boundary
-----	----------------------	------	---------------------------	-----------------	---	---------------	------------	--------------------------	----------------------------	-----------	-------------------------

**Habitat Cut: No****Site Condition:**

Prescription Regeneration survey  
Specs:

Next Step  
Treatments:

Acceptable Medium to well stocked level of Red Pine.  
Regen:

Other Old next step comments:  
Comment:

Proposed Start Date: 10/01/2016

116	52210116- CCWR	43.6	4133 - Aspen, Mixed Pine	Sawtimber Well	81	Unspec ified	Harvest	Clearcut with Retention	413 - Aspen	Even-Aged	Draft Field Boundary
-----	-------------------	------	-----------------------------	-------------------	----	-----------------	---------	----------------------------	-------------	-----------	-------------------------

**Habitat Cut: No****Site Condition:**

Prescription Harvest stand to regenerate. No cut oak, cedar, White or Red Pine. Mark some Red Pine to leave. Keep equipment out of the drainages which  
Specs: run west to east. These areas can be use as possible stand retention areas. Do not cut any trees with recreation trail markers, protect all trail sign post, and post 'logging activity' warning signs where necessary during harvest.

Next Step  
Treatments:

Acceptable Acceptable regeneration includes a moderate to well-stocked mix of aspen and coniferous species.  
Regen:

Other Old next step comments:  
Comment:

Proposed Start Date: 10/01/2016



S t a n d	Treatment Name	Acres	Stand CoverType	Size Density	Stand Age	BA Range	Treatment Type	Treatment Method	Cover Type Objective	Age Structure	Approval Status
118	52210118- CCWR	15.4	4133 - Aspen, Mixed Pine	Sawtimber Well	81	Unspec ified	Harvest	Clearcut with Retention	413 - Aspen	Even-Aged	Draft Field Boundary

**Habitat Cut: No****Site Condition:**

Prescription Harvest stand to regenerate. Mark 20 - 30 BA of Red and White Pine to leave. Leave a 100 feet no cut area from the waters edge in the north  
Specs: part of the stand. l

Next Step  
Treatments:

Acceptable Acceptable regeneration includes a moderate to well-stocked mix of aspen and coniferous species.  
Regen:

Other Old next step comments:  
Comment:

Proposed Start Date: 10/01/2016

125	52210125-CC	4.3	4191 - Mixed Upland Deciduous with Conifer	Sawtimber Well	61	111- 140	Harvest	Clearcut	4199 - Other Mixed Upland Deciduous	Even-Aged	Draft Field Boundary
-----	-------------	-----	--	-------------------	----	-------------	---------	----------	---	-----------	-------------------------

**Habitat Cut: No****Site Condition:**

Prescription Harvest stand to regenerate. No cut oak, hemlock, or cedar. No stand retention due to small stand size.  
Specs:

Next Step  
Treatments:

Acceptable Acceptable regeneration includes a moderate to well-stock mix of aspen and deciduous species.  
Regen:

Other Old next step comments:  
Comment:

Proposed Start Date: 10/01/2016

129	52210129- CCWR	72.7	4134 - Aspen, Spruce/Fir	Sawtimber Well	81	Unspec ified	Harvest	Clearcut with Retention	413 - Aspen	Even-Aged	Draft Field Boundary
-----	-------------------	------	-----------------------------	-------------------	----	-----------------	---------	----------------------------	-------------	-----------	-------------------------

**Habitat Cut: No****Site Condition:**

Prescription Harvest stand to regenerate. No cut White Pine or cedar. Keep treatment boundary away from edge of slope to minimize any erosion potential.  
Specs: Put stand retention around drainage in center of the stand which runs north to south. Maintain a 100 feet no cut buffer along Milligan Creek in the southwest corner of the stand. Do not cut any trees with recreation trail markers, protect all trail sign post, and post 'logging activity' warning signs where necessary during harvest.

Next Step  
Treatments:

Acceptable Acceptable regeneration includes a moderate to well-stocked mix of aspen and deciduous species.  
Regen:

Other Old next step comments:  
Comment:

Proposed Start Date: 10/01/2016

136	52210136- CCWR	14.4	4136 - Aspen, Mixed Conifer	Sawtimber Well	81	Unspec ified	Harvest	Clearcut with Retention	413 - Aspen	Even-Aged	Draft Field Boundary
-----	-------------------	------	--------------------------------	-------------------	----	-----------------	---------	----------------------------	-------------	-----------	-------------------------

**Habitat Cut: No****Site Condition:**

Prescription Harvest stand to regenerate. Expand treatment boundary line to the north along the private boundary line when setting up the sale if possible.  
Specs: Do not expand if it becomes too wet.

Next Step  
Treatments:

Acceptable Acceptable regeneration includes a moderate to well-stocked mix of aspen and deciduous species.  
Regen:

Other Old next step comments:  
Comment:

Proposed Start Date: 10/01/2016



S t a n d	Treatment Name	Acres	Stand CoverType	Size Density	Stand Age	BA Range	Treatment Type	Treatment Method	Cover Type Objective	Age Structure	Approval Status
137	52210137- CCWR	25.7	4134 - Aspen, Spruce/Fir	Sawtimber Well	86	Unspec ified	Harvest	Clearcut with Retention	413 - Aspen	Even-Aged	Draft Field Boundary

**Habitat Cut: No****Site Condition:**

Prescription Harvest stand to regenerate. No cut cedar or oak. Mark some Red Pine to leave. Put retention along east side of stand along the wet drainage area. Also keep equipment out of drainage area in center of stand. This is another good area for possible stand retention. Do not cut any trees with recreation trail markers, protect all trail sign post, and post 'logging activity' warning signs where necessary during harvest.

Next Step  
Treatments:

Acceptable Acceptable regeneration includes a moderate to well-stocked mix of aspen and coniferous species.  
Regen:

Other Old next step comments:  
Comment:

Proposed Start Date: 10/01/2016

146	52210146- RPSW	5.4	42210 - Natural Red Pine	Sawtimber Well	91	81-110	Harvest	Shelterwood with Retention	4221 - Natural Red Pine	Even-Aged	Draft Field Boundary
-----	-------------------	-----	-----------------------------	-------------------	----	--------	---------	-------------------------------	----------------------------	-----------	-------------------------

**Habitat Cut: No****Site Condition:**

Prescription Harvest stand to regenerate. Thin Red Pine to 30 - 50 BA. Leave Red Pine tops and cut in summer to encourage scarification and natural regeneration.

Next Step  
Treatments:

Acceptable Acceptable regeneration includes a moderate to well-stocked mix of aspen and coniferous species.  
Regen:

Other Old next step comments:  
Comment:

Proposed Start Date: 10/01/2016

**Total Treatment  
Acreage Proposed: 689.7**

## Report 5 – Site Conditions

Gaylord Mgt. Unit  
John Scheele : Examiner

Compartment: 210  
Year of Entry: 2017

### Availability for Management

Total Acres	Acres Available	Acres Avail		Dominant Site Conditions	Dominant Site Conditions						
		With Condition	Not Available		5C	5F	1C	2G	3A	3J	
761	591	<b>147</b>	23	Aspen	<b>147</b>		11	0			11
15	15	<b>0</b>	0	Bare/Sparsely Vegetated							
37	37	<b>0</b>	0	Cedar							
56	56	<b>0</b>	0	Herbaceous Openland							
11	11	<b>0</b>	0	Low-Density Trees							
118	92	<b>0</b>	26	Lowland Aspen/Balsam Poplar				17			9
183	28	<b>6</b>	148	Lowland Conifers		6		33			115
52	52	<b>0</b>	0	Lowland Deciduous							
7	7	<b>0</b>	0	Lowland Mixed Forest							
63	63	<b>0</b>	0	Lowland Shrub							
25	0	<b>0</b>	25	Lowland Spruce/Fir				25			
7	7	<b>0</b>	0	Marsh							
49	29	<b>19</b>	0	Mixed Upland Deciduous	<b>19</b>						
14	5	<b>8</b>	0	Natural Mixed Pines	<b>8</b>						
12	12	<b>0</b>	0	Northern Hardwood							
73	0	<b>73</b>	0	Oak	<b>73</b>						
40	40	<b>0</b>	0	Planted Mixed Pines							
347	337	<b>0</b>	10	Red Pine					10		
47	30	<b>0</b>	17	Upland Conifers							17
65	50	<b>15</b>	0	Upland Mixed Forest		15					
5	5	<b>0</b>	0	Upland Spruce/Fir							
29	29	<b>0</b>	0	Urban							
193	193	<b>0</b>	0	Water							
3	3	<b>0</b>	0	White Pine							
2,213	1,694	<b>269</b>	250	Total Forested Acres	<b>248</b>	21	11	76	10		153
	77%	<b>12%</b>	11%	Relative Percent							

*\*Due to limitations in the current Site Conditions Analysis tool, all nonforested acres are considered available. Future development will enable analysis of nonforested types.*

Site No.	Dominant Site Cond Availability	Dominant Site Condition	Acres	Other Site Condition	Other Site Condition	Other Site Condition	Other Site Condition
1	Unavailable	<b>3J: Water quality / BMPs (stream, river, or lake)</b>	17	2F: Too steep	2G: Too wet (sensitive soils, does not include access issues)	Unspecified	Unspecified
<b>Comments:</b>							

## Report 5 – Site Conditions

Gaylord Mgt. Unit  
John Scheele : Examiner

Compartment: 210  
Year of Entry: 2017

2	<b>Unavailable</b>	<b>2G: Too wet (sensitive soils, does not include access issues)</b>	10	3J: Water quality / BMPs (stream, river, or lake)	Unspecified	Unspecified	Unspecified
<b>Comments:</b>							
3	<b>Available</b>	<b>5C: Delay treatment for age/size class diversity or exceptional site quality</b>	6	Unspecified	Unspecified	Unspecified	Unspecified
<b>Comments:</b>							
4	<b>Unavailable</b>	<b>3J: Water quality / BMPs (stream, river, or lake)</b>	9	2G: Too wet (sensitive soils, does not include access issues)	Unspecified	Unspecified	Unspecified
<b>Comments:</b>							
5	<b>Unavailable</b>	<b>3J: Water quality / BMPs (stream, river, or lake)</b>	4	2G: Too wet (sensitive soils, does not include access issues)	Unspecified	Unspecified	Unspecified
<b>Comments:</b>							
6	<b>Unavailable</b>	<b>2G: Too wet (sensitive soils, does not include access issues)</b>	7	3A: Potential old growth / biodiversity	Unspecified	Unspecified	Unspecified
<b>Comments:</b>							

## Report 5 – Site Conditions

Gaylord Mgt. Unit  
John Scheele : Examiner

Compartment: 210  
Year of Entry: 2017

7	<b>Unavailable</b>	<b>3J: Water quality / BMPs (stream, river, or lake)</b>	22	2F: Too steep	2G: Too wet (sensitive soils, does not include access issues)	Unspecified	Unspecified
<b>Comments:</b>							
8	<b>Unavailable</b>	<b>3J: Water quality / BMPs (stream, river, or lake)</b>	12	2F: Too steep	2G: Too wet (sensitive soils, does not include access issues)	Unspecified	Unspecified
<b>Comments:</b>							
9	<b>Unavailable</b>	<b>2G: Too wet (sensitive soils, does not include access issues)</b>	11	Unspecified	Unspecified	Unspecified	Unspecified
<b>Comments:</b>							
10	<b>Unavailable</b>	<b>2G: Too wet (sensitive soils, does not include access issues)</b>	6	5F: Evaluated for Forest Health Considerations	Unspecified	Unspecified	Unspecified
<b>Comments:</b> Considered for SBW Salvage but determined to be too wet.							
11	<b>Available</b>	<b>5C: Delay treatment for age/size class diversity or exceptional site quality</b>	17	5F: Evaluated for Forest Health Considerations	Unspecified	Unspecified	Unspecified
<b>Comments:</b> Considered for SBW salvage but declined due to amount of harvesting activity in this compartment prescribed. Be cautious of potential flowing water and operability.							
12	<b>Unavailable</b>	<b>2G: Too wet (sensitive soils, does not include access issues)</b>	14	Unspecified	Unspecified	Unspecified	Unspecified
<b>Comments:</b>							

## Report 5 – Site Conditions

Gaylord Mgt. Unit  
John Scheele : Examiner

Compartment: 210  
Year of Entry: 2017

13	<b>Available</b>	<b>5C: Delay treatment for age/size class diversity or exceptional site quality</b>	21	Unspecified	Unspecified	Unspecified	Unspecified
<b>Comments:</b>							
14	<b>Unavailable</b>	<b>2G: Too wet (sensitive soils, does not include access issues)</b>	25	Unspecified	Unspecified	Unspecified	Unspecified
<b>Comments:</b>							
15	<b>Available</b>	<b>5C: Delay treatment for age/size class diversity or exceptional site quality</b>	73	Unspecified	Unspecified	Unspecified	Unspecified
<b>Comments:</b>							
16	<b>Unavailable</b>	<b>3J: Water quality / BMPs (stream, river, or lake)</b>	77	2G: Too wet (sensitive soils, does not include access issues)	Unspecified	Unspecified	Unspecified
<b>Comments:</b>							
17	<b>Available</b>	<b>5C: Delay treatment for age/size class diversity or exceptional site quality</b>	11	Unspecified	Unspecified	Unspecified	Unspecified
<b>Comments:</b>							
18	<b>Available</b>	<b>5C: Delay treatment for age/size class diversity or exceptional site quality</b>	19	Unspecified	Unspecified	Unspecified	Unspecified
<b>Comments:</b>							

## Report 5 – Site Conditions

Gaylord Mgt. Unit  
John Scheele : Examiner

Compartment: 210  
Year of Entry: 2017

19	<b>Unavailable</b>	<b>3A: Potential old growth / biodiversity</b>	10	Unspecified	Unspecified	Unspecified	Unspecified
<b>Comments:</b> Coded as a SCA. Type 2 Old Growth.							
20	<b>Available</b>	<b>5C: Delay treatment for age/size class diversity or exceptional site quality</b>	4	5F: Evaluated for Forest Health Considerations	Unspecified	Unspecified	Unspecified
<b>Comments:</b> Considered for SBW Salvage but declined. Small acreage and recommended delay in treatment of the aspen due to a lot of other prescribed harvesting activity.							
21	<b>Available</b>	<b>5C: Delay treatment for age/size class diversity or exceptional site quality</b>	3	Unspecified	Unspecified	Unspecified	Unspecified
<b>Comments:</b>							
22	<b>Unavailable</b>	<b>1C: Other dept or div proc/practices</b>	7	5F: Evaluated for Forest Health Considerations	Unspecified	Unspecified	Unspecified
<b>Comments:</b> 300' buffer recommendation along Milligan Creek to prevent beaver activity. Declined from SBW Salvage.							
23	<b>Unavailable</b>	<b>1C: Other dept or div proc/practices</b>	4	5F: Evaluated for Forest Health Considerations	Unspecified	Unspecified	Unspecified
<b>Comments:</b> 300' buffer recommended to prevent beaver activity. Declined from SBW salvage efforts.							
24	<b>Available</b>	<b>5C: Delay treatment for age/size class diversity or exceptional site quality</b>	22	Unspecified	Unspecified	Unspecified	Unspecified
<b>Comments:</b>							



## Report 5 – Site Conditions

Gaylord Mgt. Unit  
John Scheele : Examiner

Compartment: 210  
Year of Entry: 2017

25	<b>Available</b>	<b>5C: Delay treatment for age/size class diversity or exceptional site quality</b>	4	Unspecified	Unspecified	Unspecified	Unspecified
<b>Comments:</b>							
26	<b>Available</b>	<b>5C: Delay treatment for age/size class diversity or exceptional site quality</b>	5	Unspecified	Unspecified	Unspecified	Unspecified
<b>Comments:</b>							
27	<b>Available</b>	<b>5C: Delay treatment for age/size class diversity or exceptional site quality</b>	7	Unspecified	Unspecified	Unspecified	Unspecified
<b>Comments:</b>							
28	<b>Available</b>	<b>5C: Delay treatment for age/size class diversity or exceptional site quality</b>	13	5F: Evaluated for Forest Health Considerations	Unspecified	Unspecified	Unspecified
<b>Comments:</b> Stand was evaluated for SBW salvage efforts but declined at this time. Operability is questionable (was left out of the previous adjacent harvest - too wet at that time).							
29	<b>Available</b>	<b>5C: Delay treatment for age/size class diversity or exceptional site quality</b>	31	5F: Evaluated for Forest Health Considerations	Unspecified	Unspecified	Unspecified
<b>Comments:</b> Considered for SBW salvage but declined. Concern over MNFI potential.							

## Report 5 – Site Conditions

Gaylord Mgt. Unit

John Scheele : Examiner

Compartment: 210

Year of Entry: 2017

30	<b>Available</b>	<b>5C: Delay treatment for age/size class diversity or exceptional site quality</b>	8	Unspecified	Unspecified	Unspecified	Unspecified
<b>Comments:</b>							
31	<b>Available</b>	<b>5F: Evaluated for Forest Health Considerations</b>	15	Unspecified	Unspecified	Unspecified	Unspecified
<b>Comments:</b> Declined from SBW Salvage because product is relatively unmerchantable yet.							
32	<b>Available</b>	<b>5C: Delay treatment for age/size class diversity or exceptional site quality</b>	3	5F: Evaluated for Forest Health Considerations	Unspecified	Unspecified	Unspecified
<b>Comments:</b> Considered for SBW Salvage but declined due to amount of harvesting activity in this compartment and small acreage. Stand will be considered during the next inventory cycle.							
33	<b>Available</b>	<b>5F: Evaluated for Forest Health Considerations</b>	6	Unspecified	Unspecified	Unspecified	Unspecified
<b>Comments:</b> Considered for SBW salvage but products are limited there are some regeneration concerns over a salvage or harvest effort.							
34	<b>Unavailable</b>	<b>3J: Water quality / BMPs (stream, river, or lake)</b>	12	5F: Evaluated for Forest Health Considerations	Unspecified	Unspecified	Unspecified
<b>Comments:</b>							
155	<b>Unavailable</b>	<b>2G: Too wet (sensitive soils, does not include access issues)</b>	2	Unspecified	Unspecified	Unspecified	Unspecified
<b>Comments:</b>							



**Report 6 – PROPOSED SPECIAL CONSERVATION AREA\* (SCA) DETAILS**

\* This is a partial list of SCAs for this compartment. Not included are those areas identified under other Department initiatives (Natural Rivers, Deer Wintering Areas, etc.). Those will be identified in separate, future map and report products.

SCA Name	SCA Category	Detail Type	Recommendation	Acres
<b>Natural Red Pine Stand</b>	Type 1 or Type 2 Old Growth	Verified Type 2 Old Growth Area	<b>Proposed SCA</b>	11
<b>Comments</b>				
100+ year old red pine White Pine on Finch sands in a low pocket. Stand has small two track leading through stand, looks like a BMP issue. Will need to check in the spring / summer to look at closing the road. Wet soils will cause a problem with harve				



**Report 7 – EXISTING SPECIAL CONSERVATION AREA DETAILS**

\* This is a list of SCA's for this compartment along with a 1/4 mile buffer surrounding the compartment. Refer to the Special Conservation Area Map for locations of the below listed Conservation Areas.

ERA = Ecological Reference Area  
HCVA = High Conservation Value Area  
SCA = Special Conservation Area

Conservation Area	Type	Description
SCA	Cold Water Lake	A coldwater lake has temperature and dissolved oxygen conditions that allow naturally-reproduced or stocked trout populations and those of other coldwater fish species to persist from year to year. Suitable conditions for coldwater fishes may occur in Michigan lakes if they are relatively deep, have substantial groundwater inflows, or are located in colder (northern) areas of the state. Such lakes are established by Director's action and designated as trout resources by Fisheries Order 200.
SCA	Cold Water Stream	A coldwater stream has temperature and dissolved oxygen conditions that allow naturally-reproduced or stocked trout populations and those of other coldwater fish species (e.g., slimy sculpin) to persist from year to year. Coldwater streams in Michigan typically provide these conditions due to substantial contributions of groundwater to their stream flows. Such streams are established by Director's action and designated as trout resources by Fisheries Order 210.
SCA	Potential Old Growth Areas	This category contains stands were identified for a broad range of reasons and were coded in the OI database as stand condition 8 as potential old growth (POG). Approximately 310,000 acres have been identified through the Operations Inventory (OI)/Compartment Review process. For stands in Year of Entry 2008 and forward, potential old growth is managed for the identified objective until it is: 1) vetted through the Biodiversity Conservation Planning Process (BCPP) and given a specific designation and objective (as an ERA, HCVA, or other type of SCA) and is released from the potential old growth designation; or 2) it is released from the potential old growth designation via the Compartment Review process.
SCA	Riparian Area	A transitional area between aquatic and terrestrial ecosystems in which the terrestrial ecosystem influences the aquatic ecosystem and vice-versa. Because of the unique conditions adjacent to lakes, streams and open water wetlands, riparian areas harbor a high diversity of plants and wildlife. Riparian communities are ecologically and socially significant in their effects on water quality and quantity, as well as aesthetics, habitat, bank stability, timber production, and their contribution to overall biodiversity.



Stand	Level 4 Cover Type	Size Density	Acres	Stand Age	BA Range	General Comments:
1	42110 - Planted Red Pine	Sawtimber Medium	104.8	68	81-110	Thinned in 1997 with all Jack pine removed. Red Pine is 4 to 5 sticks tall, branchy, with average quality. The latest growth rings are getting tighter. Pockets of full aspen and Jack Pine regeneration. Pockets of heavy understory. BA is 100.
2	6112 - Lowland Aspen	Poletimber Well	33.0	37	Unspecified	Heavy deer browse on the Red Osier Dogwood.
4	42110 - Planted Red Pine	Sawtimber Well	3.5	54	111-140	Thinned in 2010. BA is 140.
6	4130 - Aspen	Sapling Well	24.3	6	Immature	Balsam Fir blowing over.
8	6112 - Lowland Aspen	Sawtimber Medium	5.6	91	Unspecified	Heavy EAB. Too wet.
9	4130 - Aspen	Sapling Well	9.3	6	Immature	
10	4134 - Aspen, Spruce/Fir	Sawtimber Well	13.4	76	Unspecified	Larger aspen beginning to break off. Some log-sized DBH cedar in stand. Drainage in east part of stand flowing northwest to river. High, dry ground in northeast corner of stand.
13	6112 - Lowland Aspen	Sawtimber Well	9.1	81	Unspecified	Factor limit. Too wet and along river. Heavy deer browse on the dogwood.
14	4130 - Aspen	Sapling Well	14.7	18	Immature	
16	4130 - Aspen	Poletimber Well	29.5	27	Immature	
18	6112 - Lowland Aspen	Sapling Medium	5.1	18	Immature	Heavy deer browse on the dogwood.
19	6111 - Lowland Balsam Poplar	Poletimber Well	8.6	27	Immature	EAB D-holes present. Drainage in stand flowing to the southeast.
21	4311 - Pine, Aspen Mix	Sawtimber Well	22.0	71	81-110	Aspen is poorer quality. Variety of Red Pine diameters with the tops dying in the older pines. West side of stand gets wetter. Access stand through private property to the east or from the north off of Twin School Road. Cut with stand to the north.
23	6115 - Lowland Ash	Poletimber Well	9.3	61	Unspecified	Heavy EAB with stand dying out.
24	42110 - Planted Red Pine	Sawtimber Well	2.2	66	111-140	Alternate rows of Red and Jack Pine. Jack Pine dying and breaking off. BA is 130.
25	6128 - Lowland Coniferous, Mixed Deciduous	Poletimber Well	77.2	91	Unspecified	



Stand	Level 4 Cover Type	Size Density	Acres	Stand Age	BA Range	General Comments:
26	4191 - Mixed Upland Deciduous with Conifer	Sawtimber Well	19.4	86	51-80	Oak is multi-stemmed with some aspen dying out.
27	4123 - Red Oak	Sawtimber Medium	72.7	81	51-80	Very high deer activity under the oak within the stand. BA is 51.
28	6118 - Lowland Deciduous with Cedar	Poletimber Well	15.3	31	Immature	Excessive blow down. White Cedar tops are dying and blowing over.
29	4136 - Aspen, Mixed Conifer	Sawtimber Medium	6.4	61	Unspecified	
30	4133 - Aspen, Mixed Pine	Sapling Well	11.9	2	Immature	Cut in 2014.
31	4139 - Aspen, Mixed Deciduous	Sawtimber Well	10.0	61	Unspecified	
32	42110 - Planted Red Pine	Sawtimber Well	14.5	56	81-110	Thinned in 2010. BA is 110. A lot of deer trails through the stand.
33	4131 - Aspen, Oak	Sawtimber Well	16.9	81	Unspecified	Some Pockets of younger aspen. Some individually larger diameter Red Pine.
34	4133 - Aspen, Mixed Pine	Poletimber Well	11.2	50	Unspecified	West side of stand was planted to Red Pine but had poor survival and poor growth. The black oak is multi-stemmed with large crowns and poor form. Leave for next YOE.
35	42141 - Planted Mixed Pine, Mixed Deciduous	Poletimber Well	7.3	56	111-140	Red Pine survival rate is poor from planting. Slow growth rate per year of Red Pine. Jack Pine dying out. Larger, better quality natural Red Pine to the east. BA is 130 including oak, aspen, and Jack Pine.
36	42110 - Planted Red Pine	Sawtimber Well	14.7	66	81-110	Thinned in 1994. BA is 81.
37	4134 - Aspen, Spruce/Fir	Sawtimber Well	31.3	86	Unspecified	Blow down beginning to occur. Cedar is short with tops dying. Higher spot is center of the stand and along the east edge of stand. Use barbed wired fence along east edge of stand as boundary line.
38	42110 - Planted Red Pine	Sawtimber Well	54.7	58	141-170	Thinned in 1997. BA is 153. There is a few small openings of deciduous regeneration within the stand.
39	4136 - Aspen, Mixed Conifer	Sawtimber Well	21.8	71	Unspecified	
41	6112 - Lowland Aspen	Sapling Well	33.0	18	Immature	Cut in 1997. High ground along the west edge of stand.
42	6128 - Lowland Coniferous, Mixed Deciduous	Poletimber Poor	6.1	26	Immature	



Stand	Level 4 Cover Type	Size Density	Acres	Stand Age	BA Range	General Comments:
43	6120 - Lowland Cedar	Sawtimber Well	9.1	101	Unspecified	Areas of blow down with very high Balsam Fir regeneration.
46	6127 - Lowland Pine	Sawtimber Well	7.1	101	81-110	Very unique stand of large diameter White Pine that are very tall and straight.
47	4130 - Aspen	Poletimber Well	20.7	50	Unspecified	Higher amount of Balsam Fir in the south part of stand. Leave for next YOE.
48	4130 - Aspen	Sawtimber Well	5.3	86	Unspecified	Tall aspen in north part of stand. Developing trunk rot. South part of stand is younger aspen with an average of 8" DBH which may have been cut in 1965.
49	6129 - Mixed Coniferous Lowland Forest	Sawtimber Well	12.9	121	Unspecified	Some individual White Pine, White Spruce, and cedar that are greater than 18" DBH. Leave as an 'un cut' buffer along the Black River. EAB is present.
50	429 - Mixed Upland Conifers	Sawtimber Well	29.6	87	Unspecified	Mixed stand north of the Sturgeon rearing facility. Some balsam Fir and larger aspen falling over. some larger DBH White and Red Pine trees. Access stand through private property just east of the facility.
51	4191 - Mixed Upland Deciduous with Conifer	Sawtimber Well	25.1	71	111-140	Balsam Fir beginning to blow down. Oak tops are dying. Leave pine species and oak if cutting.
52	6128 - Lowland Coniferous, Mixed Deciduous	Poletimber Medium	24.0	61	Unspecified	
53	42290 - Natural Mixed Pine	Sawtimber Well	8.1	81	111-140	Jack Pine dying out. BA is 120 including all species.
55	4134 - Aspen, Spruce/Fir	Sawtimber Well	47.6	71	Unspecified	Part of sale #52-113-11-01. Pocket of cedar in southwest part of stand.
60	42210 - Natural Red Pine	Sawtimber Well	15.0	91	81-110	Stand was previously prescribed to cut but was not because of access problems. Individual leave trees are still marked with teal paint. Very nice, tall Red Pine. Some larger than 18" DBH White Pine are scattered throughout stand. Stand BA is 110.
62	4130 - Aspen	Sapling Well	13.1	18	Immature	
63	42110 - Planted Red Pine	Sawtimber Well	16.4	68	111-140	Jack Pine removed in 1997. Red Pine rows are more obvious to see than in stand to the south. BA is 120.
64	42111 - Planted Red Pine, Mixed Deciduous	Poletimber Well	5.7	59	111-140	Thinned in 2010. BA is 123.
65	6128 - Lowland Coniferous, Mixed Deciduous	Sawtimber Well	21.7	111	Unspecified	Some larger White Cedar trees 14 DBH and larger. Steep hill down to Milligan Creek and Black River. Leave as a 'no cut' area or retention.



	Level 4 Cover Type	Size Density	Acres	Stand Age	BA Range	General Comments:
68	6120 - Lowland Cedar	Poletimber Poor	11.5	101	Unspecified	Some areas of significant blow down. Poor quality cedar with a lot of dead cedar overstory.
69	4134 - Aspen, Spruce/Fir	Sawtimber Medium	3.4	61	Unspecified	Cut with adjacent sale.
72	4130 - Aspen	Sapling Well	2.3	18	Immature	
76	42110 - Planted Red Pine	Sawtimber Well	17.7	66	141-170	Nice stand with little understory competition. Thinned in 1994. BA is 150.
78	4134 - Aspen, Spruce/Fir	Sawtimber Well	11.5	84	Unspecified	Wettest portion is in the north part of stand.
79	4139 - Aspen, Mixed Deciduous	Sawtimber Well	18.6	86	Unspecified	Some larger DBH aspen of better quality near the water. Smaller DBH timber with more Red Maple along west edge of stand.
80	4133 - Aspen, Mixed Pine	Sawtimber Well	11.1	91	Unspecified	Aspen is over mature and beginning to fall apart. Some larger DBH White and Red Pine trees.
81	4134 - Aspen, Spruce/Fir	Sawtimber Well	27.6	71	Unspecified	Some area of heavy Balsam Fir blow down and some area of smaller DBH aspen.
86	42141 - Planted Mixed Pine, Mixed Deciduous	Sapling Well	19.9	6	Immature	Cut in 2010 and planted in 2012 with 2-0 stock.
87	4130 - Aspen	Sapling Well	7.8	5	Immature	
88	6120 - Lowland Cedar	Poletimber Poor	16.8	101	Unspecified	Canopy closure is closer to 25%. Very thick understory. Cedar tops are dying out.
90	4134 - Aspen, Spruce/Fir	Sawtimber Well	10.9	81	Unspecified	Balsam Fir breaking off and creating slash. Higher Balsam Fir amount along Milligan Creek.
91	6115 - Lowland Ash	Sapling Well	7.3	26	Immature	EAB D-holes present.
93	6112 - Lowland Aspen	Sapling Well	8.4	5	Immature	
94	4130 - Aspen	Sapling Well	14.4	5	Immature	
95	4134 - Aspen, Spruce/Fir	Sawtimber Well	12.4	81	Unspecified	
96	6128 - Lowland Coniferous, Mixed Deciduous	Sawtimber Well	2.3	91	Unspecified	Leave as diversity, habitat, or retention.





Stand	Level 4 Cover Type	Size Density	Acres	Stand Age	BA Range	General Comments:
97	4130 - Aspen	Sapling Well	24.4	18	Immature	
99	4134 - Aspen, Spruce/Fir	Sawtimber Well	14.9	81	Unspecified	Some Balsam Fir and aspen over mature and falling over. Very small drainage in west-center of the stand. Larger individual Red Pine located in south part of stand. Barbed-wire fence along the south line of stand. Put retention around the lower area in the south part of stand including some of the Red and White Pine. Do not cross drainage during timber harvest.
100	4130 - Aspen	Sapling Well	12.4	18	Immature	Some individual x-sized DBH Red Pine trees.
101	42140 - Planted Mixed Pine	Sawtimber Well	13.2	63	111-140	Small individual blocks of Red and Jack Pine. Jack Pine dying out and breaking off. Red Pine was thinned in 2010. BA for Red Pine is 133.
102	42210 - Natural Red Pine	Sawtimber Well	21.3	76	81-110	Select cut in 1997. BA is 100. Campsites along the water.
103	4133 - Aspen, Mixed Pine	Sapling Well	13.7	6	Immature	
105	42210 - Natural Red Pine	Sawtimber Medium	7.5	91	51-80	Cut in 1997. Pockets of Red Pine and White Pine with higher BA's which could be thinned. Current BA is 60.
106	6117 - Lowland Deciduous, Mixed Coniferous	Sapling Well	7.3	21	Immature	
108	42110 - Planted Red Pine	Sawtimber Well	13.6	68	81-110	Thinned in 1997 and 2010. BA is 100.
111	4311 - Pine, Aspen Mix	Sawtimber Medium	8.0	81	81-110	Some x-sized Red Pine and aspen trees with the aspen dying and falling over. Adjacent stand in Compartment 211 is prescribed for cutting. BA is 90.
112	42210 - Natural Red Pine	Sawtimber Well	10.0	91	171-200	Some x-sized Red and White Pine. Small drainage in center of stand. Possible wildlife corridor or drainage protection stand. BA is 190.
113	4311 - Pine, Aspen Mix	Sapling Well	20.4	4	Immature	Harvested in 2010. Planted in spring of 2014.
114	4133 - Aspen, Mixed Pine	Sawtimber Well	6.7	71	Unspecified	Poor quality aspen with trunk rot. Jack Pine dying out.
115	4133 - Aspen, Mixed Pine	Sawtimber Well	5.0	71	Unspecified	
116	4133 - Aspen, Mixed Pine	Sawtimber Well	43.6	81	Unspecified	Low drainage in center of stand flowing to the east. Wetter area in north part of stand. Small pocket of Red Pine along northwest part of stand. Old fence line/cut line along north boundary.



	Level 4 Cover Type	Size Density	Acres	Stand Age	BA Range	General Comments:
117	6128 - Lowland Coniferous, Mixed Deciduous	Sawtimber Well	9.8	101	Unspecified	EAB is ash. Stream buffer.
118	4133 - Aspen, Mixed Pine	Sawtimber Well	15.4	81	Unspecified	Mixed-sized, poor quality aspen. Stand transitions into lower ground toward Milligan Creek to the west.
119	4133 - Aspen, Mixed Pine	Sawtimber Medium	8.1	81	Unspecified	Some large diameter Red Pine and aspen in center of stand with aspen over mature and falling over. Campsites along the water edge.
120	42110 - Planted Red Pine	Sawtimber Well	18.9	68	111-140	Thinned in 1997. Nice quality Red Pine. Larger, better quality trees around stand 107. Pockets of very little to very high Jack Pine understory. BA is 115.
121	42110 - Planted Red Pine	Sawtimber Well	7.3	68	111-140	Thinned in 1997. Nice quality, 5-stick high. BA is 120.
122	4133 - Aspen, Mixed Pine	Sawtimber Well	4.3	61	Unspecified	White Pine is fairly short, very branchy with large crowns. Poor quality aspen.
123	4319 - Mixed Upland Forest	Poletimber Well	14.9	41	Unspecified	
124	6122 - Black Spruce	Poletimber Well	25.4	91	Unspecified	Some larger than 12" diameter cedar scattered in stand.
125	4191 - Mixed Upland Deciduous with Conifer	Sawtimber Well	4.3	61	111-140	Balsam Fir breaking off and falling over. Hemlock is very short. A small drainage is on the east side of stand flowing to the northwest.
126	6123 - Lowland Fir	Poletimber Medium	3.2	61	Unspecified	Some past beaver activity in this stand.
127	4130 - Aspen	Poletimber Well	31.6	37	Unspecified	
128	4130 - Aspen	Sapling Well	11.6	18	Immature	
129	4134 - Aspen, Spruce/Fir	Sawtimber Well	72.7	81	Unspecified	There is variability in DBH within stand. Some small pockets of smaller aspen and pockets of larger aspen. Accessing the east part of the stand is best by going east, just south of the private property line. Avoid the drainage in the center of the stand which runs from the private property north of the stand to Milligan Creek.
131	42380 - Non Pine Upland Conifer, Mixed Deciduous	Sawtimber Well	17.1	96	Unspecified	Steep slope leading down to the Milligan Creek.
132	42110 - Planted Red Pine	Sawtimber Well	11.8	54	111-140	Thinned in 2010. BA is 140.



	Level 4 Cover Type	Size Density	Acres	Stand Age	BA Range	General Comments:
133	42330 - Upland Fir	Poletimber Well	5.4	50	Unspecified	White birch dying out. Some larger DBH trees along the road. Leave for next YOE.
134	4134 - Aspen, Spruce/Fir	Sapling Well	9.3	27	Immature	
135	4134 - Aspen, Spruce/Fir	Sawtimber Well	7.0	81	Unspecified	
136	4136 - Aspen, Mixed Conifer	Sawtimber Well	14.4	81	Unspecified	Some Balsam Fir falling over. Lattice stake and old survey line along east boundary of stand.
137	4134 - Aspen, Spruce/Fir	Sawtimber Well	25.7	86	Unspecified	Balsam Fir starting to fall over. Pocket of Red Pine in north central part of stand. Lowland drainage along the east part of stand and in center of stand.
139	6112 - Lowland Aspen	Sapling Well	3.9	7	Immature	
140	6112 - Lowland Aspen	Sawtimber Poor	11.2	91	Unspecified	Aspen falling over and over mature. Too Wet.
141	4134 - Aspen, Spruce/Fir	Sawtimber Well	6.0	91	Unspecified	Some larger X-sized DBH aspen which is over mature and beginning to die and fall over. Cut if access is granted from adjacent private landowner.
143	42200 - Natural White Pine	Sawtimber Well	2.8	61	1-50	Very tall, branchy White Pine. Some trees are multi-stemmed. BA is 146.
144	6117 - Lowland Deciduous, Mixed Coniferous	Poletimber Medium	10.7	71	Unspecified	Poor quality stand with a higher water table. Aspen dying out and EAB present. No cut recommended.
145	42260 - Natural Pine, Mixed Deciduous	Sawtimber Well	5.4	76	51-80	BA is 77.
146	42210 - Natural Red Pine	Sawtimber Well	5.4	91	81-110	BA is 100.
147	4130 - Aspen	Sapling Well	3.1	5	Immature	
149	6115 - Lowland Ash	Sapling Medium	2.2	21	Immature	Poor quality ash.
150	6124 - Lowland Spruce- Fir	Sawtimber Well	4.0	101	Unspecified	Blow down starting to occur. Heavy EAB present. Leave for stream protection.
151	4130 - Aspen	Poletimber Well	2.1	18	Immature	
152	4112 - Maple, Beech, Cherry Association	Sawtimber Medium	11.9	81	1-50	Mostly multi-stemmed clumps of Red Maple trees. Very poor quality trees.

S  
t  
a  
n  
d

Gaylord Mgt. Unit

## Report 8 – Forested Stands

Compartment: 210  
Year of Entry: 2017

	Level 4 Cover Type	Size Density	Acres	Stand Age	BA Range	General Comments:
<b>153</b>	6132 - Mixed Lowland Forest with Cedar	Sawtimber Well	6.5	111	Unspecified	Blow down beginning to occur.
<b>154</b>	42210 - Natural Red Pine	Sawtimber Well	1.7	59	141-170	Tall, nice quality Red Pine. White Pine is tall but some are multi-stemmed. BA is 160.
<b>156</b>	4131 - Aspen, Oak	Sapling Well	5.2	16	Immature	Stand is younger than the stand to the south.
<b>158</b>	6128 - Lowland Coniferous, Mixed Deciduous	Sawtimber Well	14.3	101	Unspecified	Some large diameter White Cedar in center of stand which is relatively short (5 sticks). Large Balsam Fir is falling over.
<b>159</b>	4134 - Aspen, Spruce/Fir	Poletimber Well	16.7	50	Unspecified	Leave for next YOE.
<b>160</b>	42210 - Natural Red Pine	Sawtimber Well	0.6	71	171-200	Nice, tall, good quality Red Pine.



Stand	Cover Type	Acres	Managed Site	General Comments:
3	622 - Lowland Shrub	28.9	No	
5	330 - Low-Density Trees	4.9	No	
7	500 - Water	2.7	No	
11	310 - Herbaceous Openland	1.1	No	
12	122 - Road/Parking Lot	2.6	No	
15	310 - Herbaceous Openland	2.5	No	
17	310 - Herbaceous Openland	0.8	No	
20	622 - Lowland Shrub	2.7	No	
22	622 - Lowland Shrub	4.2	No	
40	310 - Herbaceous Openland	4.7	No	
44	3303 - Mixed Low Density Trees	6.2	No	
45	122 - Road/Parking Lot	0.9	No	
54	622 - Lowland Shrub	1.0	No	
56	310 - Herbaceous Openland	0.6	No	
57	760 - Non-stocked Forest	15.0	No	Cut in winter of 2014.
58	122 - Road/Parking Lot	3.1	No	
59	500 - Water	5.3	No	
61	310 - Herbaceous Openland	6.0	No	



Stand	Cover Type	Acres	Managed Site	General Comments:
66	510- Water (OI)	1.0	No	
67	122 - Road/Parking Lot	14.8	No	
70	310 - Herbaceous Openland	17.0	Yes	
71	122 - Road/Parking Lot	1.9	No	
73	310 - Herbaceous Openland	0.8	Yes	
74	622 - Lowland Shrub	3.0	No	
75	622 - Lowland Shrub	9.4	No	
77	500 - Water	162.9	No	
82	310 - Herbaceous Openland	6.9	No	
83	122 - Road/Parking Lot	6.0	No	
84	310 - Herbaceous Openland	6.0	No	
85	310 - Herbaceous Openland	2.1	No	
89	500 - Water	4.7	No	
92	622 - Lowland Shrub	0.7	No	
98	310 - Herbaceous Openland	0.5	No	
104	500 - Water	16.7	No	
107	622 - Lowland Shrub	2.6	No	
109	622 - Lowland Shrub	1.9	No	



Stand	Cover Type	Acres	Managed Site	General Comments:
110	310 - Herbaceous Openland	8.8	No	
130	622 - Lowland Shrub	2.1	No	
138	623 - Emergent Wetland	1.4	No	
142	622 - Lowland Shrub	2.6	No	
148	623 - Emergent Wetland	5.3	No	
155	622 - Lowland Shrub	3.6	No	