



**GWINN FOREST MANAGEMENT UNIT  
COMPARTMENT REVIEW PRESENTATION**

**COMPARTMENT 64 ENTRY YEAR: 2011**

**Compartment Acreage: 2147 GIS acres: 2147 County: 52 Marquette**

---

**Revision Date: 7/23/09**

**Stand Examiner: Kevin LaBumbard**

**Legal Description: T43N R26W Sec's. 22-27, 34-36**

**Management Goals: 2138 GIS acres, 2160 actual ownership acres. Drumlin or ground moraine topography with rolling upland interspersed with lowland conifer. Most of the upland contains aspen or northern hardwoods. The hardwood stands are mostly high quality timber stands that have been treated in the past. There are a variety of age classes in the aspen stands with seven stands schedule for final harvest. The lowlands are primarily swamp conifers and fairly large cedar stands which are important deer yards. In addition to the aspen, three hardwood stands are scheduled for selective harvest. Management goals of the scheduled hardwood stands are to improve stem quality and diameter class distribution while maintaining species diversity, conifer content, and den trees. All harvest plans will also include considerations for conifer retention, coarse woody debris, and BMP's, with all hemlock, cedar, white pine or red pine to be retained. We will retain all species represented and all size classes including the large legacy trees. Special conservation area stands have been selected to protect and enhance the riparian values and wildlife travel corridors.**

**Soils and topography** Terrain is flat to gently rolling; with a mix of upland and lowland. Major soils include Carbondale and Tawas, Emmet-Escanaba complex, Kalkaska-Waiska complex, and Croswell sand.

**Ownership Patterns, Development, and Land Use in and Around the Compartment: State land intermixed with private and corporate ownership.**

**Unique, Natural Features**

**Archeological, Historical, and Cultural Features**

**Special Management Designations or Considerations:**

Special Conservation Area Stands: 32,33,38,49,53,57,61,70,74,77.

**Watershed and Fisheries Considerations:**

**Wildlife Habitat Considerations:**

**Mineral Resource and Development Concerns and/or Restrictions:** Sections 22 -27, 34 & 36, T43N-R26W, Marquette County

Surface sediments consist of medium-textured till and minor glacial outwash sand & gravel and postglacial alluvium. There is insufficient data to determine the glacial drift thickness. The Ordovician Prairie du Chien Group and Cambrian Trempealeau Formation subcrop below the glacial drift. These rocks could be used for

stone. Gravel pits are located in the Section 25 and 36 and there is potential on the upland drumlins. Abandoned iron mines are located twelve miles to the northeast. Part of this Compartment was previously leased for metallic exploration. There is no economic oil and gas production in the UP.

**Vehicle Access:** Access is fairly good from Ross Grade, the old KC cut-across road, and County Road 557.

**Survey Needs:** none

**Recreational Facilities and Opportunities:** Recreational activity for this area is very popular for upland hunting of ruffed grouse, woodcock and whitetail deer.

**Fire Protection:** This compartment has a low risk for wildfire.

**Additional Compartment Information:**

- **The following 5 reports from the Operations Inventory System (OIPC) are attached:**
  - ◆ **Cover Type by Age Class**
  - ◆ **Cover Type by Management Objective**
  - ◆ **Compartment Volume Summary**
  - ◆ **Proposed Treatments – No Limiting Factors**
  - ◆ **Proposed Treatments – With Limiting Factors**
  
- **The following information is displayed, where pertinent, on the attached compartment maps:**
  - ◆ **Base feature information, stand numbers, cover types**
  - ◆ **Proposed treatments**
  - ◆ **Proposed road access system**
  - ◆ **Suggested potential old growth**

8/31/2009 1:57:06 PM

Michigan Department of Natural Resources - Operations Inventory System  
Individual Compartment Report

ESCANABA RIVER STATE FOREST

GWINN FOREST MGT UNIT

MARQUETTE COUNTY

COMPARTMENT: 64

Table 3

(acres shown in boxes)

STAND AGE CLASS

COVER TYPE	Not Coded	0-9	10-19	20-29	30-39	40-49	50-59	60-69	70-79	80-89	90-99	100-109	110-119	120-129	130-139	140-149	150-159	All Aged	Total
Aspen		98	134	274	186	57	2	15	9	142	18								935
Black Spruce											17	17							34
Cedar										4		173	58		114	20			369
Grass	60																		60
Hemlock											4								4
LowInd Brush	86																		86
LowInd Poplr									3	30									33
Marsh	7																		7
Mx Swmp Cnfr									67	56	74	121		32	6				356
Non Stocked	1																		1
Swamp Hrdwds									20										20
Upland Hdwds																		251	251
Water	1																		1
<b>Total</b>	<b>155</b>	<b>98</b>	<b>134</b>	<b>274</b>	<b>186</b>	<b>57</b>	<b>2</b>	<b>15</b>	<b>99</b>	<b>232</b>	<b>113</b>	<b>311</b>	<b>58</b>	<b>32</b>	<b>120</b>	<b>20</b>		<b>251</b>	<b>2147</b>

8/31/2009 1:57:14 PM

Michigan Department of Natural Resources - Operations Inventory System  
Individual Compartment Report

ESCANABA RIVER STATE FOREST

GWINN FOREST MGT UNIT

MARQUETTE COUNTY

COMPARTMENT: 64

Table 3A

(acres shown in boxes)

MANAGEMENT OBJECTIVE TYPE

COVER TYPE	A	S	V	C	G	H	J	I	L	P	N	Q	X	O	B	R	K	Y	F	E	T	D	U	M	Z	W	Total
A Aspen	917																							18			935
S Black Spruce		34																									34
C Cedar				369																							369
G Grass					60																						60
H Hemlock						4																					4
L LowInd Brush									86																		86
P LowInd Poplr										33																	33
N Marsh											7																7
Q Mx Swmp Cnfr												356															356
X Non Stocked													1														1
E Swamp Hrdwds																			20								20
M Upland Hdwds																								251			251
Z Water																									1		1
<b>Total</b>	917	34		369	60	4			86	33	7	356	1						20					269	1		2147

ESCANABA RIVER STATE FOREST

GWINN FOREST MGT UNIT

MARQUETTE COUNTY

COMPARTMENT: **64**

**Table 10 - COMPARTMENT VOLUME SUMMARY - ALL STANDS**

COMPARTMENT SUMMARY			
TOTAL VOLUME		CUT VOLUME	
Hardwood	9187 Cds	Hardwood	2974 Cds
Hardwood	1087 Mbf	Hardwood	337 Mbf
Softwood	10838 Cds	Softwood	619 Cds
Softwood	259 Mbf	Sum CutVol	4267 Cds
Sum TotVol	22717 Cds		
<b>Total Cmpt Acres</b>		Acres Proposed For Cut.....	
2147		347	

**GWINN FOREST MGT UNIT**

**Proposed Treatments  
With NO Limiting Factors**

**Compartment: 64**

**Entry Year: 2011**

Stand	Cover Type	Acres	Age	Site Index	Mgt Obj	Condition	Method Cut	Harvest Priority	Cultural Need	fdf Status
<b>26</b>	<b>A6</b>	83	79	60	aspen (upland)	mature	final harvest	2		
comnts Fmd : Good sized aspen poles but the stand has lost a fair amount of timber to blowdown. The result is a patchy stand with BA's in excess of 110 in places and as low as 20 in the blowdown areas. Harvest plans will retain the few upland cedar.										
<b>56</b>	<b>M9</b>	68		60	northern hardwood	unevenaged	selection	1		
comnts Fmd : Excellent quality sugar maple and basswood stand with just 2-3 white birch and yellow birch stems on the south end. The stand will benefit from a light thinning to reduce crown competition.										
<b>58</b>	<b>A6</b>	24	85	65	aspen (upland)	mature	final harvest	2		
comnts Fmd : Mature aspen stand with a fair amount of blowdown. This is a wet site, with white birch, fir, and "upland" cedar which will be retained. On the north and west, the stand degrades to black ash/P type. Harvesting will be limited to the winter months.										
<b>65</b>	<b>A6</b>	18	94	72	northern hardwood	mature	removal	1		
comnts Fmd : This is a high quality hardwood site dominated by large 12-18" aspen over sugar maple poles and a few white birch along the western frindge. Areas of aspen blowdown have decent sugar maple regeneration. Remove the overstory aspen and let the stand convert to northern hardwoods. Retain all hardwoods.										
<b>69</b>	<b>M9</b>	114		68	northern hardwood	unevenaged	selection	1		
comnts Fmd : FDF.cut 1994 good quality stand. Sugar maple sawtimber stand with a good blend of basswood. There are a couple of pockets of decent regeneration in the old gaps but most of the understory is leatherwood. Stand contains huge old basswood and maple remnants.										
<b>72</b>	<b>M6</b>	7		70	northern hardwood	unevenaged	thinning	2		
comnts Fmd : Even-aged sugar maple pole stand with good potential especially after the twins are removed. Occasional basswood, hemlock, and large sugar maple which will be retained. Understory consists of leatherwood and ironwood.										
<b>79</b>	<b>A6</b>	20	78	62	aspen (upland)	mature	final harvest	2		
comnts Fmd : Excellent stand of large aspen on 3 north and south running "ridges" with narrow drains between. White birch component increases moving east to west while dbh decreases. A fair amount of the aspen has been lost to blowdown. Mixed conifers consists of 3-4 stick white spruce and fir. This will be a winter sale as access will require crossing a narrow Q/alder type.										
<b>83</b>	<b>A6</b>	7	72	55	aspen (upland)	mature	final harvest	2		
comnts Fmd : Bigtooth aspen with a few white birch and white spruce on a small ridge. Swamp conifers to the west. Stand contains a small vernal pond on the south end. Winter cut as crossing a narrow swale will be required to access the stand.										
<b>85</b>	<b>A6</b>	4	78	60	aspen (upland)	immature	final harvest	2		
comnts Fmd : Aspen is a mix of bigtooth and quakers with a heavier concentration of white birch moving south within the stand. Has a frindge of spruce/fir on the south end. Stand contains a small vernal pond which will excluded from the sale. Cut with stand 83.										
<b>Total Acres.....</b>		<b>345</b>								

Stand	Cover Type	Acres	Age	Site Index	Mgt Obj	Condition	Method Cut	Harvest Priority	Cultural Need	FDI Status
34	A6	2	71	60	aspen (upland)	mature	final harvest	3		

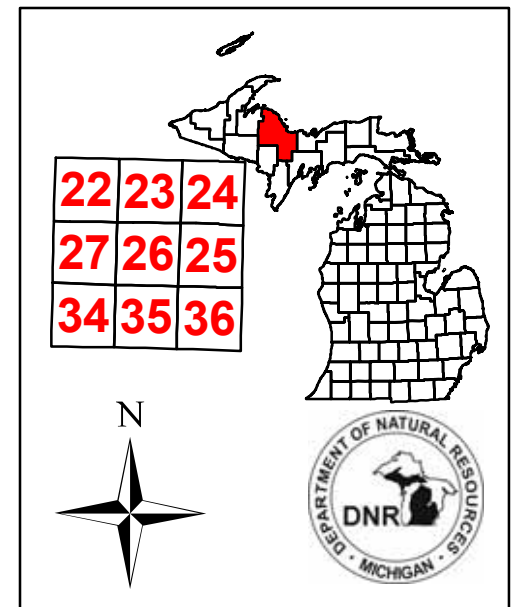
TREATMENT LIMITING FACTORS: Inadequate volume due to small acreage

comnts Fmd : Small acreage stand, patchy, with larger diameter (but short) aspen and upland black spruce. Sale setup will involve a major line running project. Small acreage may make the sale unfeasible to harvest.

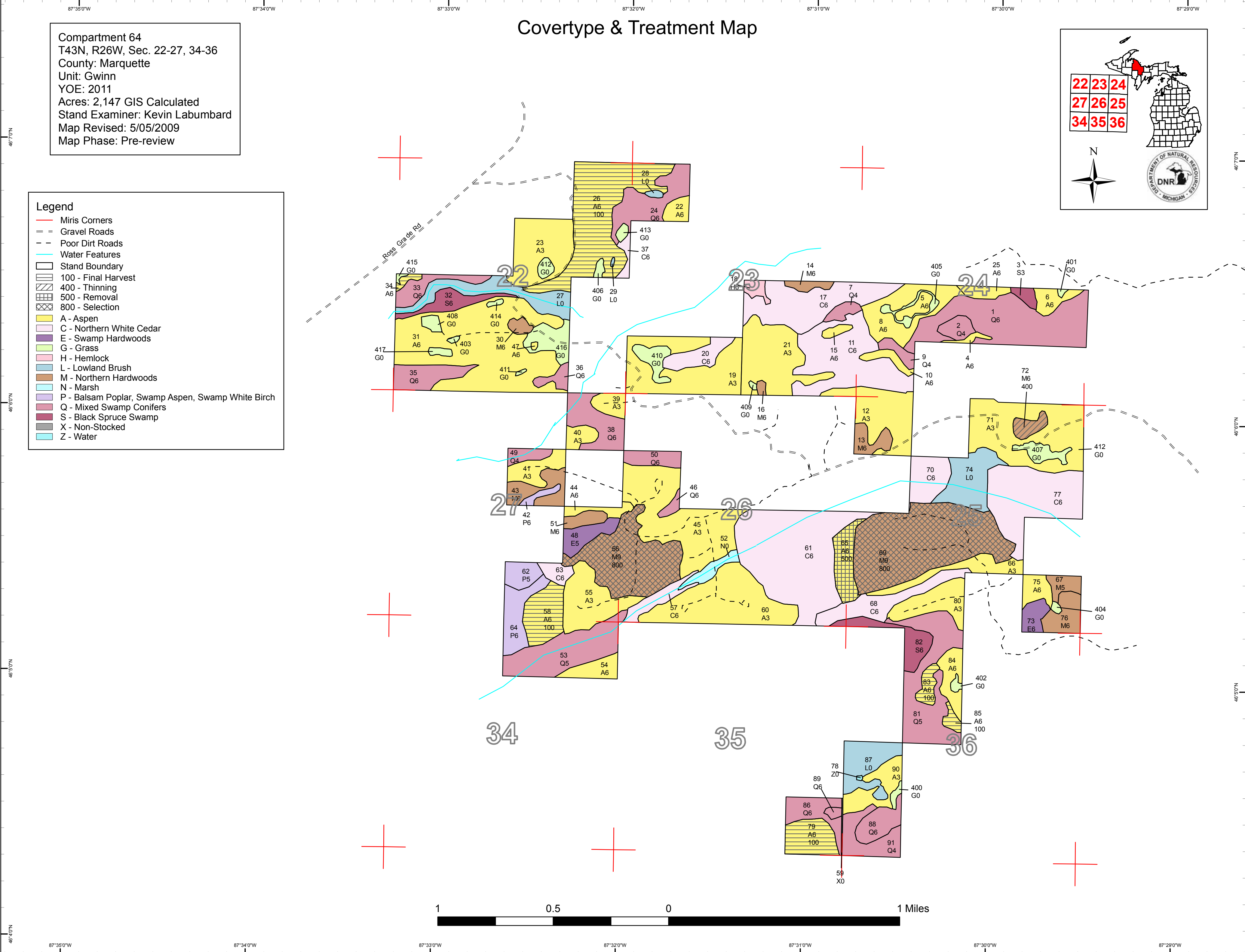
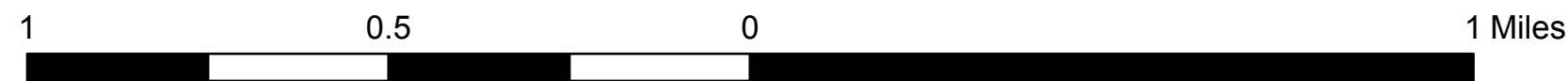
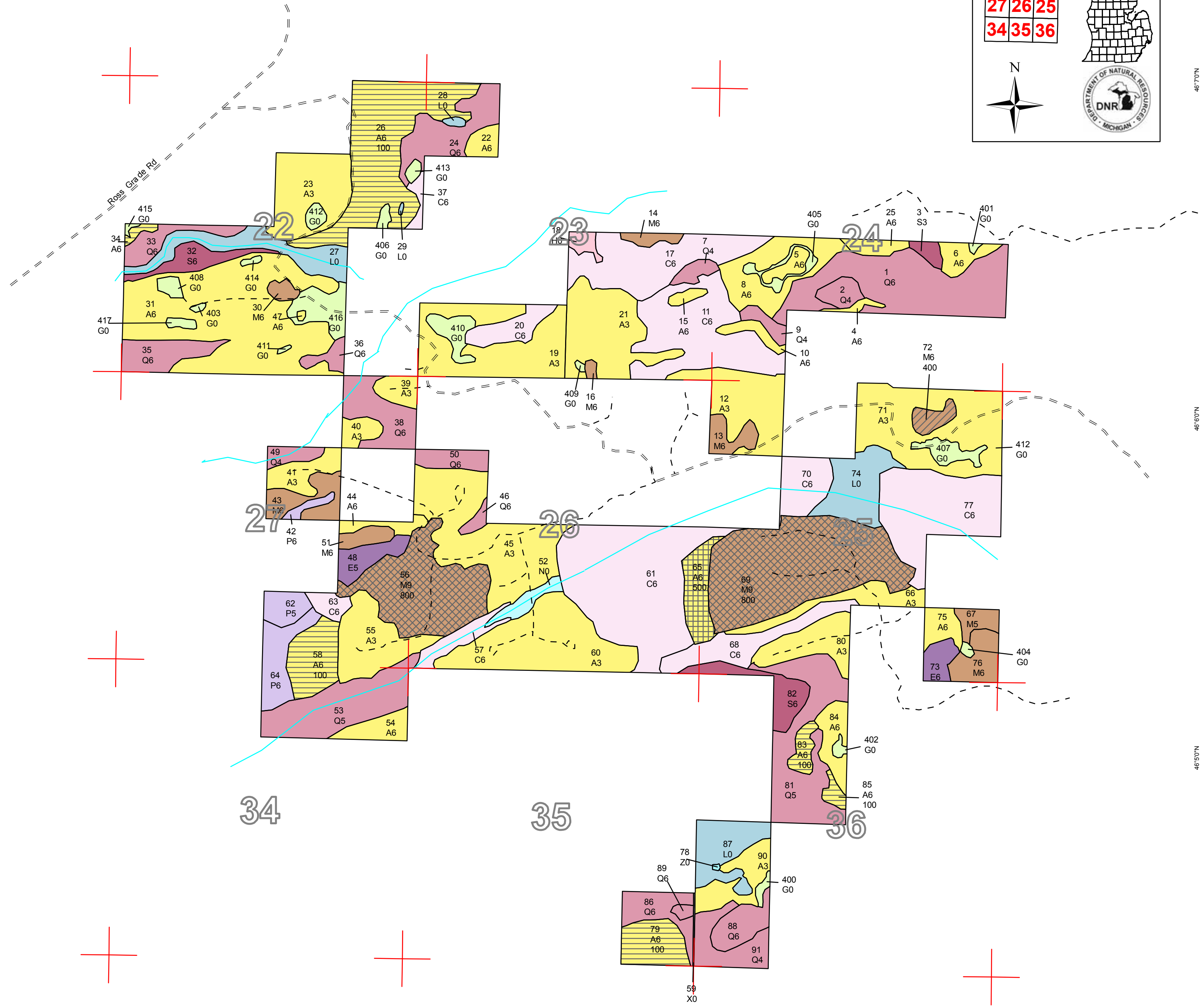
**Total Acres..... 2**

# Coverture & Treatment Map

Compartment 64  
 T43N, R26W, Sec. 22-27, 34-36  
 County: Marquette  
 Unit: Gwinn  
 YOY: 2011  
 Acres: 2,147 GIS Calculated  
 Stand Examiner: Kevin Labumbard  
 Map Revised: 5/05/2009  
 Map Phase: Pre-review



- Legend**
- Miris Corners
  - - Gravel Roads
  - - Poor Dirt Roads
  - Water Features
  - Stand Boundary
  - ▨ 100 - Final Harvest
  - ▧ 400 - Thinning
  - ▩ 500 - Removal
  - 800 - Selection
  - A - Aspen
  - C - Northern White Cedar
  - E - Swamp Hardwoods
  - G - Grass
  - H - Hemlock
  - L - Lowland Brush
  - M - Northern Hardwoods
  - N - Marsh
  - P - Balsam Poplar, Swamp Aspen, Swamp White Birch
  - Q - Mixed Swamp Conifers
  - S - Black Spruce Swamp
  - X - Non-Stocked
  - Z - Water





# Stand Boundary Map

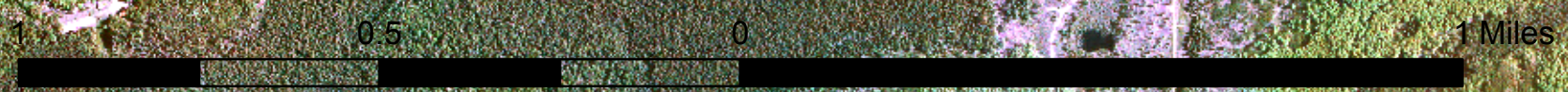
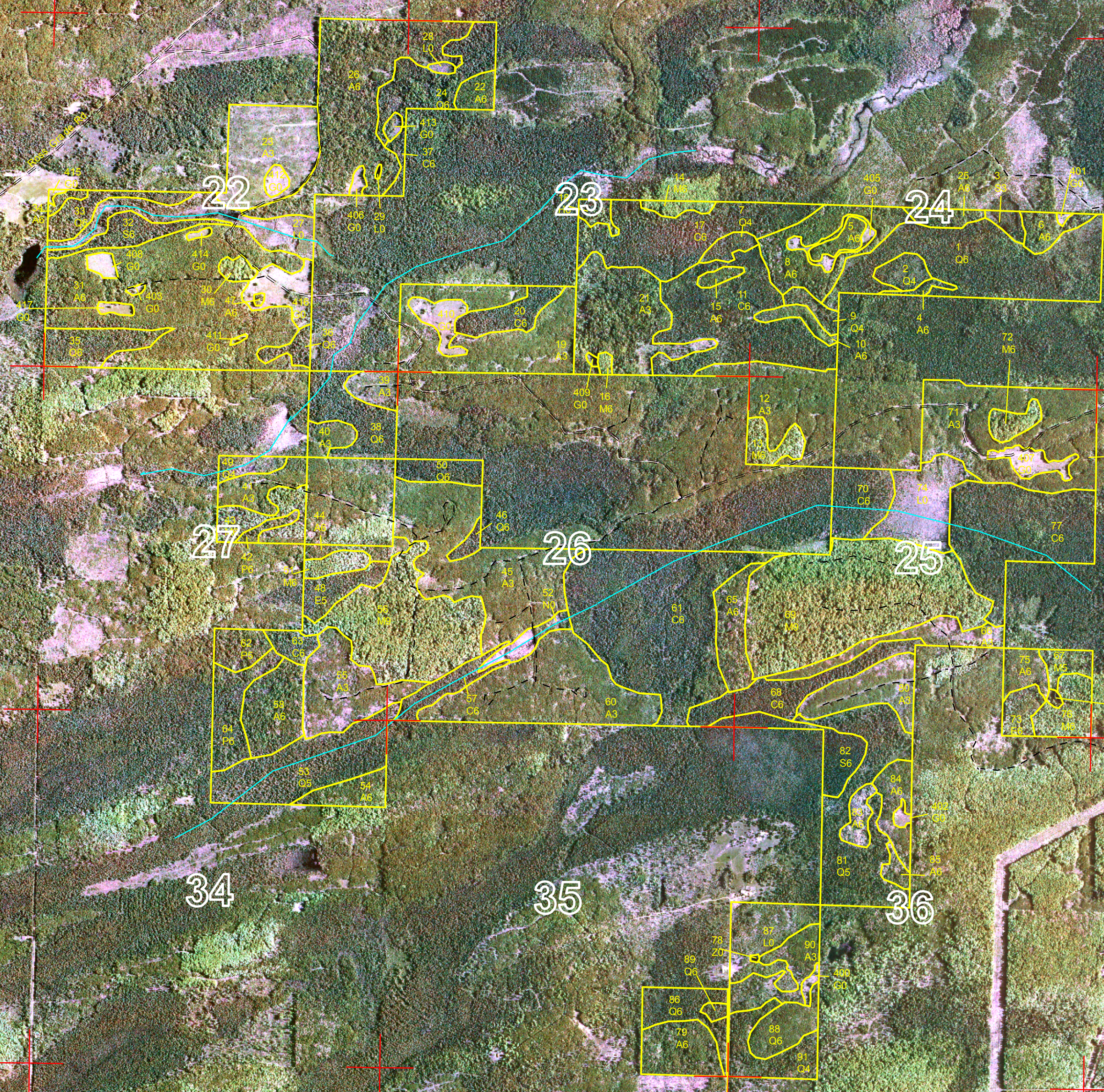
Compartment 64  
T43N, R26W, Sec. 22-27, 34-36  
County: Marquette  
Unit: Gwinn  
YOE: 2011  
Acres: 2,147 GIS Calculated  
Stand Examiner: Kevin Labumbard  
Map Revised: 5/05/2009  
Map Phase: Pre-review

- Legend
- Miris Corners
  - == Gravel Roads
  - Poor Dirt Roads
  - Water Features
  - Stand Boundary

22	23	24
27	26	25
34	35	36

N

DEPARTMENT OF NATURAL RESOURCES  
DNR  
MICHIGAN

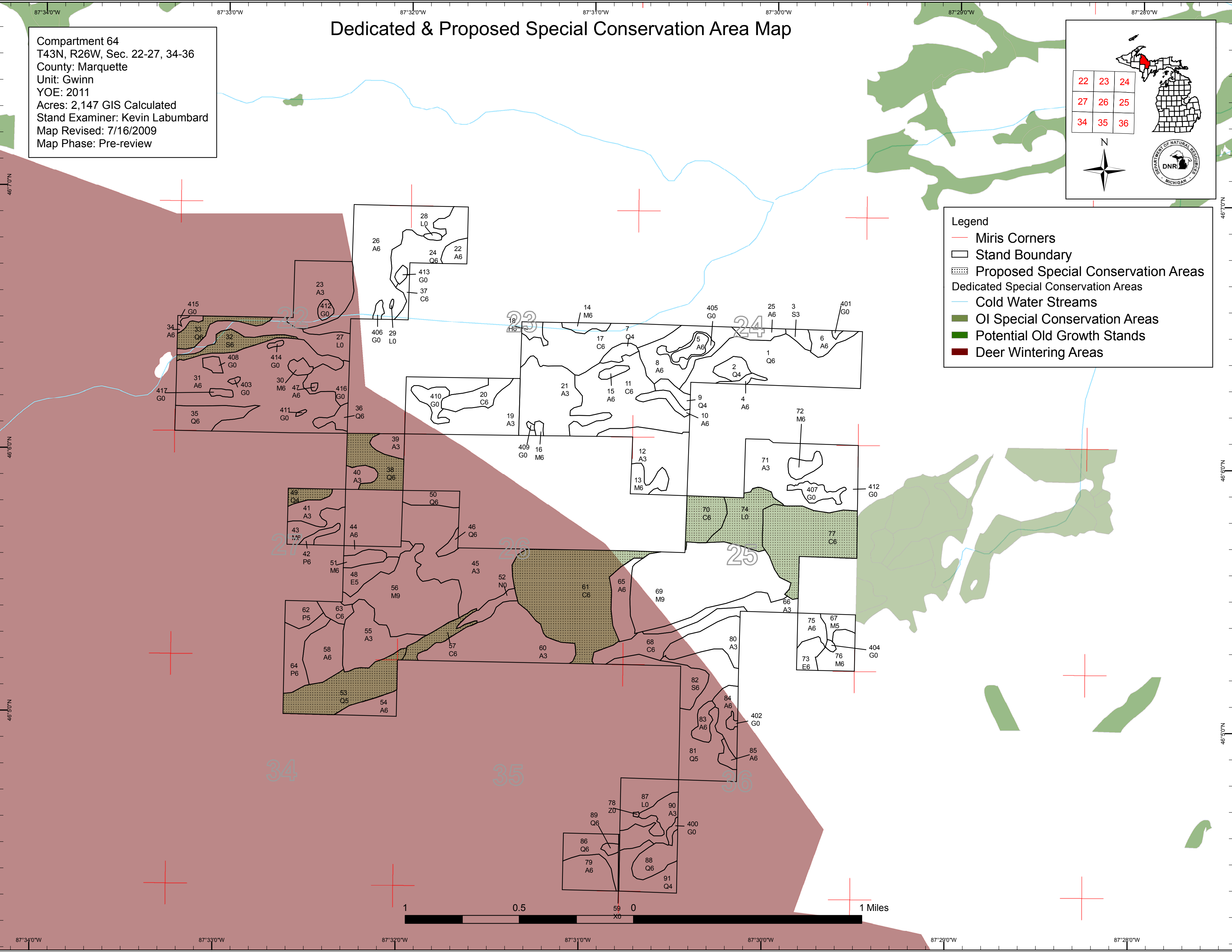


# Dedicated & Proposed Special Conservation Area Map

Compartment 64  
 T43N, R26W, Sec. 22-27, 34-36  
 County: Marquette  
 Unit: Gwinn  
 YOE: 2011  
 Acres: 2,147 GIS Calculated  
 Stand Examiner: Kevin Labumbard  
 Map Revised: 7/16/2009  
 Map Phase: Pre-review

**Legend**

- Miris Corners
- Stand Boundary
- Proposed Special Conservation Areas
- Dedicated Special Conservation Areas
- Cold Water Streams
- Old Growth Special Conservation Areas
- Potential Old Growth Stands
- Deer Wintering Areas





**DEDICATED CONSERVATION AREA DETAILS**

\* This is a list of Dedicated Biodiversity Areas for this compartment along with a 1/4 mile buffer surrounding the compartment. Refer to Dedicated Conservation Area Map for areas that the below listed Conservation Areas are located.

ERA = Ecological Reference Area  
 HCVA = High Conservation Value Area  
 SCA = Special Conservation Area

Conservation Area	Type	Description
SCA	Cold Water Stream	A coldwater stream has temperature and dissolved oxygen conditions that allow naturally-reproduced or stocked trout populations and those of other coldwater fish species (e.g., slimy sculpin) to persist from year to year. Coldwater streams in Michigan typically provide these conditions due to substantial contributions of groundwater to their stream flows. Such streams are established by Director's action and designated as trout resources by Fisheries Order 210.
SCA	Habitat Area	An area that provide some specific need for the life cycle of wildlife species, including State Wildlife Areas and Waterfowl Production Areas, deer wintering complexes in lowland conifer communities, grassland openings and savannas. Habitat areas are distinct from critical habitat designated for recovery of endangered or threatened species (such as Kirtland's warbler or piping plover areas) in that they are more general in nature, are not primarily associated with threatened or endangered species, and are not covered by species recovery plans that are developed in cooperation with Federal agencies.
SCA	Potential Old Growth Areas	This category contains stands were identified for a broad range of reasons and were coded in the OI database as stand condition 8 as potential old growth (POG). Approximately 310,000 acres have been identified through the Operations Inventory (OI)/Compartment Review process. For stands in Year of Entry 2008 and forward, potential old growth is managed for the identified objective until it is: 1) vetted through the Biodiversity Conservation Planning Process (BCPP) and given a specific designation and objective (as an ERA, HCVA, or other type of SCA) and is released from the potential old growth designation; or 2) it is released from the potential old growth designation via the Compartment Review process.