



**Gwinn Forest Management Unit
Compartment Review Presentation
Compartment 271 Entry Year: 2011
Compartment Acreage: 969 County: Marquette**

Revision Date: 8/25/2009

Stand Examiner: Dean Wilson

Legal Description: T45N-R28W, sections 13, 24, 25.

RMU (if applicable):

Management Goals: Mixed Use.

Soil and Topography: Medium to coarser sands in the uplands and organic soils in the lowlands. The terrain ranges from level to rolling to slightly hilly.

Ownership Patterns, Development, and Land Use in and Around the Compartment: State land borders on the east and west sides, and larger private land holdings to the north and south. Land use is for forest production and recreation.

Unique, Natural Features: Contains part of a maintained large opening complex. The Camp Eleven Creek flows through this area.

Archeological, Historical, and Cultural Features: An old grade assumed to be related to the white pine logging days runs along the Camp Eleven Creek bottom.

Special Management Designations or Considerations: Contains some SCA designations.

Watershed and Fisheries Considerations: Protecting the Camp Eleven Creek watershed.

Wildlife Habitat Considerations:

Mineral Resource and Development Concerns and/or Restrictions: Surface sediments consist of coarse-textured till and peat & muck. The glacial drift thickness varies between 50 and 100 feet. The Precambrian Archean Granite/Gneiss subcrops below the glacial drift. This rock could be used as dimension stone. Gravel pits are not located in the area, but there could be some potential. Abandoned iron mines are located ten miles to the northeast. Part of this Compartment was previously leased for metallic exploration. There is no economic oil and gas production in the UP.

Vehicle Access: Is good to the compartment and limited internally.

Survey Needs: None

Recreational Facilities and Opportunities: Used primarily for passive recreation.

Fire Protection: High risk

Additional Compartment Information: Compartment is primarily made up of younger jack pine stands.

- **The following 5 reports from the Operations Inventory System (OIPC) are attached:**
 - ◆ **Cover Type by Age Class**
 - ◆ **Cover Type by Management Objective**
 - ◆ **Compartment Volume Summary**
 - ◆ **Proposed Treatments – No Limiting Factors**
 - ◆ **Proposed Treatments – With Limiting Factors**

- **The following information is displayed, where pertinent, on the attached compartment maps:**
 - ◆ **Base feature information, stand numbers, cover types**
 - ◆ **Proposed treatments**
 - ◆ **Proposed road access system**
 - ◆ **Suggested potential old growth**

8/31/2009 2:45:34 PM

Michigan Department of Natural Resources - Operations Inventory System
Individual Compartment Report

ESCANABA RIVER STATE FOREST

GWINN FOREST MGT UNIT

MARQUETTE COUNTY

COMPARTMENT: 271

Table 3

(acres shown in boxes)

STAND AGE CLASS

COVER TYPE	Not Coded	0-9	10-19	20-29	30-39	40-49	50-59	60-69	70-79	80-89	90-99	100-109	110-119	120-129	130-139	140-149	150-159	All Aged	Total
Aspen				80															80
Black Spruce											9							175	184
Grass	109																		109
Jack Pine			95	134	61	245													535
Lowlnd Brush	17																		17
Marsh	1																		1
Red Pine																		8	8
Spruce Fir									7		9							6	22
Tamarack										10									10
Water	3																		3
Total	130		95	214	61	245			7	10	18							189	969

8/31/2009 2:45:37 PM

Michigan Department of Natural Resources - Operations Inventory System
Individual Compartment Report

ESCANABA RIVER STATE FOREST

GWINN FOREST MGT UNIT

MARQUETTE COUNTY

COMPARTMENT: 271

Table 3A

(acres shown in boxes)

MANAGEMENT OBJECTIVE TYPE

COVER TYPE	A	S	V	C	G	H	J	I	L	P	N	Q	X	O	B	R	K	Y	F	E	T	D	U	M	Z	W	Total	
A Aspen	80																										80	
S Black Spruce		184																										184
G Grass					109																							109
J Jack Pine							535																					535
L Lowlnd Brush									17																			17
N Marsh											1																	1
R Red Pine																8												8
F Spruce Fir																			22									22
T Tamarack																					10							10
Z Water																									3		3	
Total	80	184			109		535		17		1					8			22		10				3		969	

ESCANABA RIVER STATE FOREST

GWINN FOREST MGT UNIT

MARQUETTE COUNTY

COMPARTMENT: **271**

Table 10 - COMPARTMENT VOLUME SUMMARY - ALL STANDS

COMPARTMENT SUMMARY			
TOTAL VOLUME		CUT VOLUME	
Hardwood	282 Cds	Hardwood	75 Cds
Softwood	5017 Cds	Softwood	87 Cds
Softwood	103 Mbf	Softwood	6 Mbf
Sum TotVol	5505 Cds	Sum CutVol	174 Cds
Total Cmpnt Acres		Acres Proposed For Cut.....	
969		7	

**Proposed Treatments
With NO Limiting Factors**

Compartment: 271

Entry Year: 2011

Stand	Cover Type	Acres	Age	Site Index	Mgt Obj	Condition	Method Cut	Harvest Priority	Cultural Need	FDI Status
--------------	-----------------------	--------------	------------	-----------------------	--------------------	------------------	-----------------------	-----------------------------	--------------------------	-----------------------

Total Acres..... 0

Stand	Cover Type	Acres	Age	Site Index	Mgt Obj	Condition	Method Cut	Harvest Priority	Cultural Need	FDI Status
30	F6	7	73	43	spruce-fir (uplands- including upland black spruce)	mature	final harvest	3		

TREATMENT LIMITING FACTORS: Bridge needed (portable bridge not available or inadequate)
 Road needed (resources not presently available)
 Inadequate volume due to small acreage

comnts Fmd : Can not access this stand from this compartment due to the Camp Eleven Creek and its associated bottom lands. May be able to harvest this area when compartment 270 is entered.

Total Acres..... 7

87°46'0"W

87°45'0"W

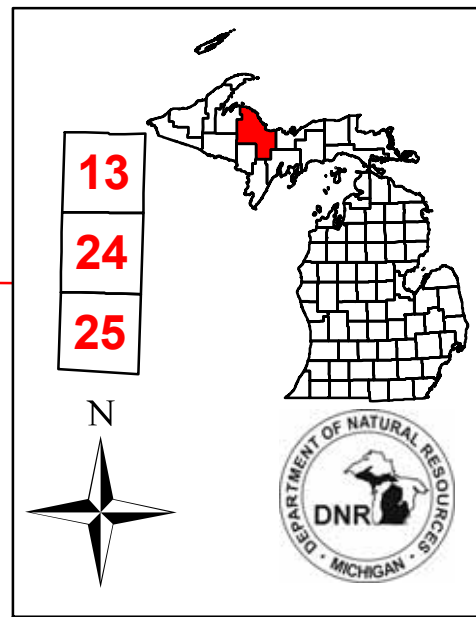
87°44'0"W

Covertime & Treatment Map

Compartment 271
 T45N, R28W, Sec. 13, 24, 25
 County: Marquette
 Unit: Gwinn
 YOE: 2011
 Acres: 969 GIS Calculated
 Stand Examiner: Dean Wilson
 Map Revised: 5/20/2009
 Map Phase: Pre-review

Legend

- Continuous, 7, 25
- Miris Corners
- - Poor Dirt Roads
- Water Features
- Stand Boundary
- 100 - Final Harvest
- A - Aspen
- F - Upland Spruce or Fir
- G - Grass
- J - Jack Pine
- L - Lowland Brush
- N - Marsh
- R - Red Pine
- S - Black Spruce Swamp
- T - Tamarack
- Z - Water



46°18'0"N

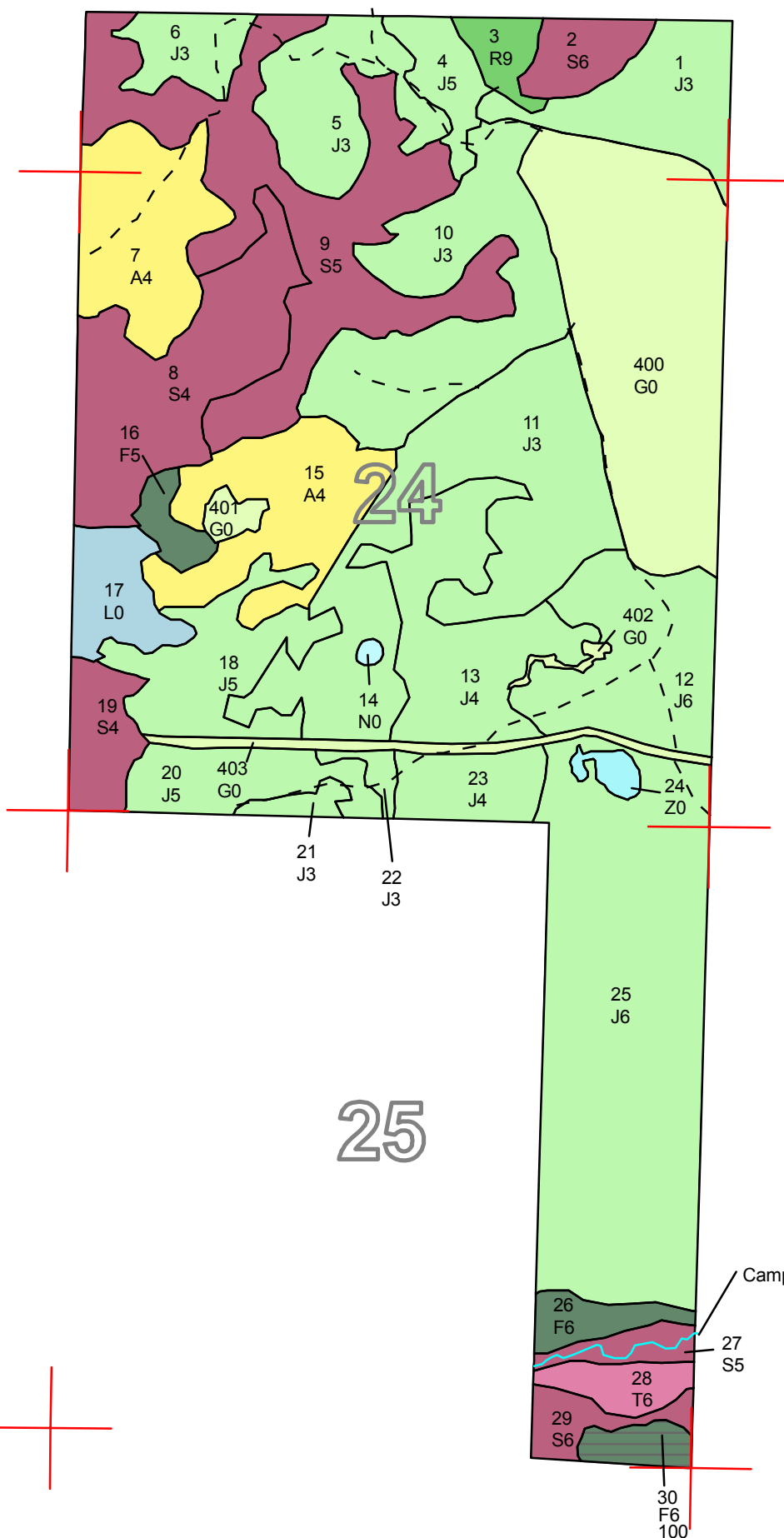
46°18'0"N

46°17'0"N

46°17'0"N

46°16'0"N

46°16'0"N



1

0.5

0

1 Miles

87°46'0"W

87°45'0"W

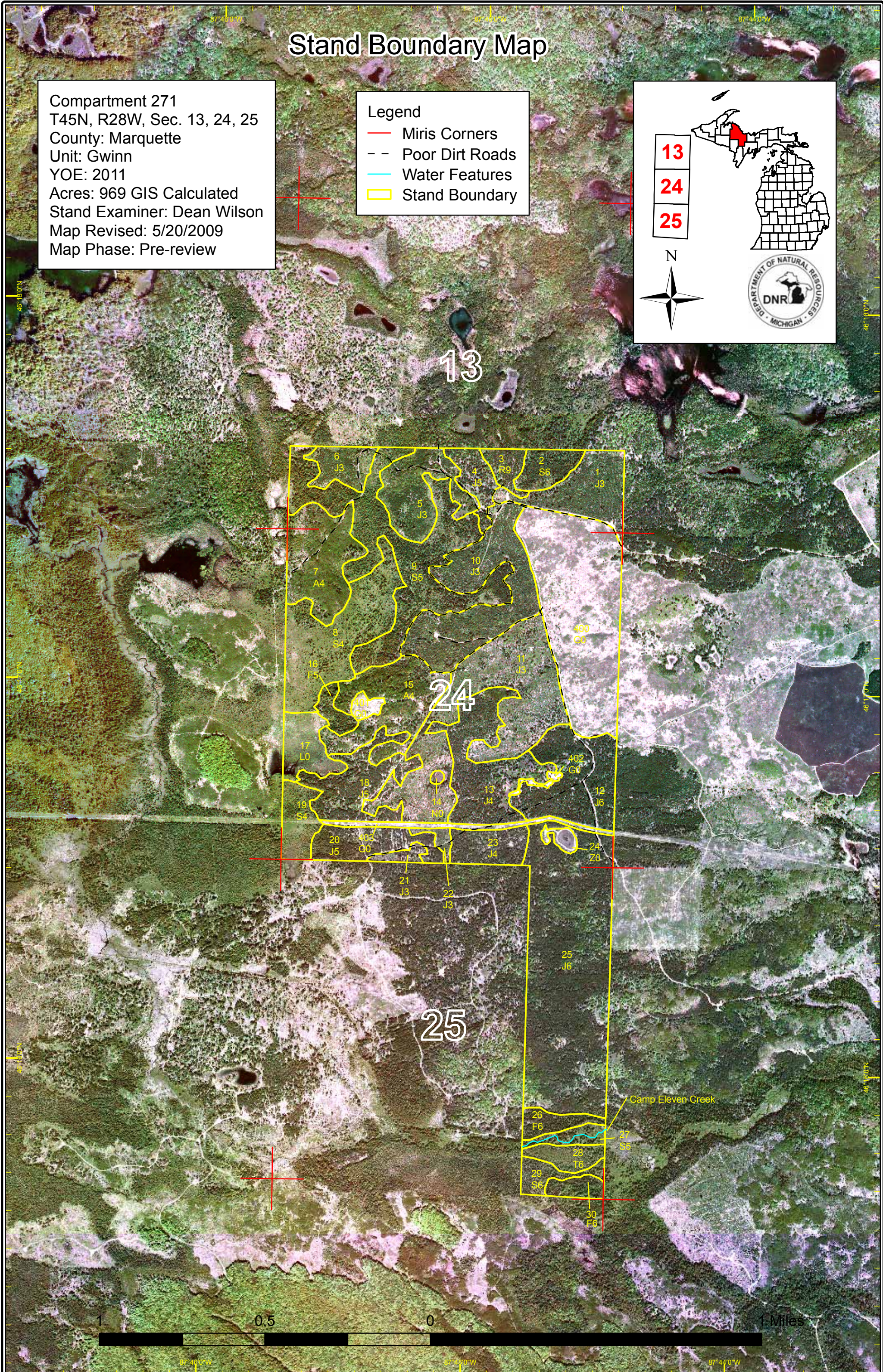
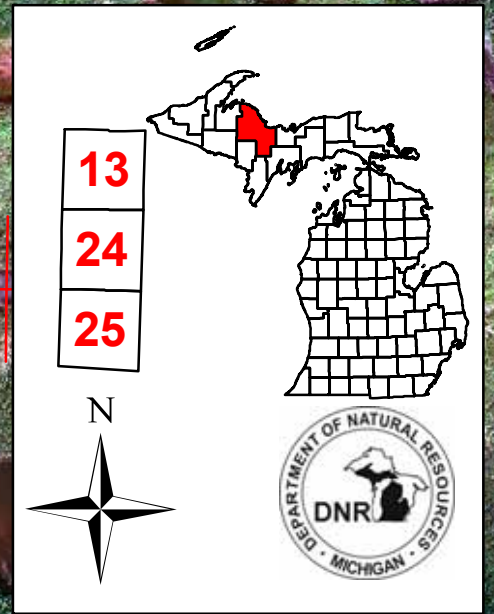
87°44'0"W

Stand Boundary Map

Compartment 271
T45N, R28W, Sec. 13, 24, 25
County: Marquette
Unit: Gwinn
YOE: 2011
Acres: 969 GIS Calculated
Stand Examiner: Dean Wilson
Map Revised: 5/20/2009
Map Phase: Pre-review

Legend

- Miris Corners
- - Poor Dirt Roads
- Water Features
- Stand Boundary

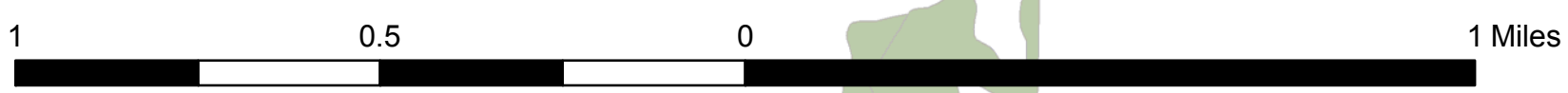
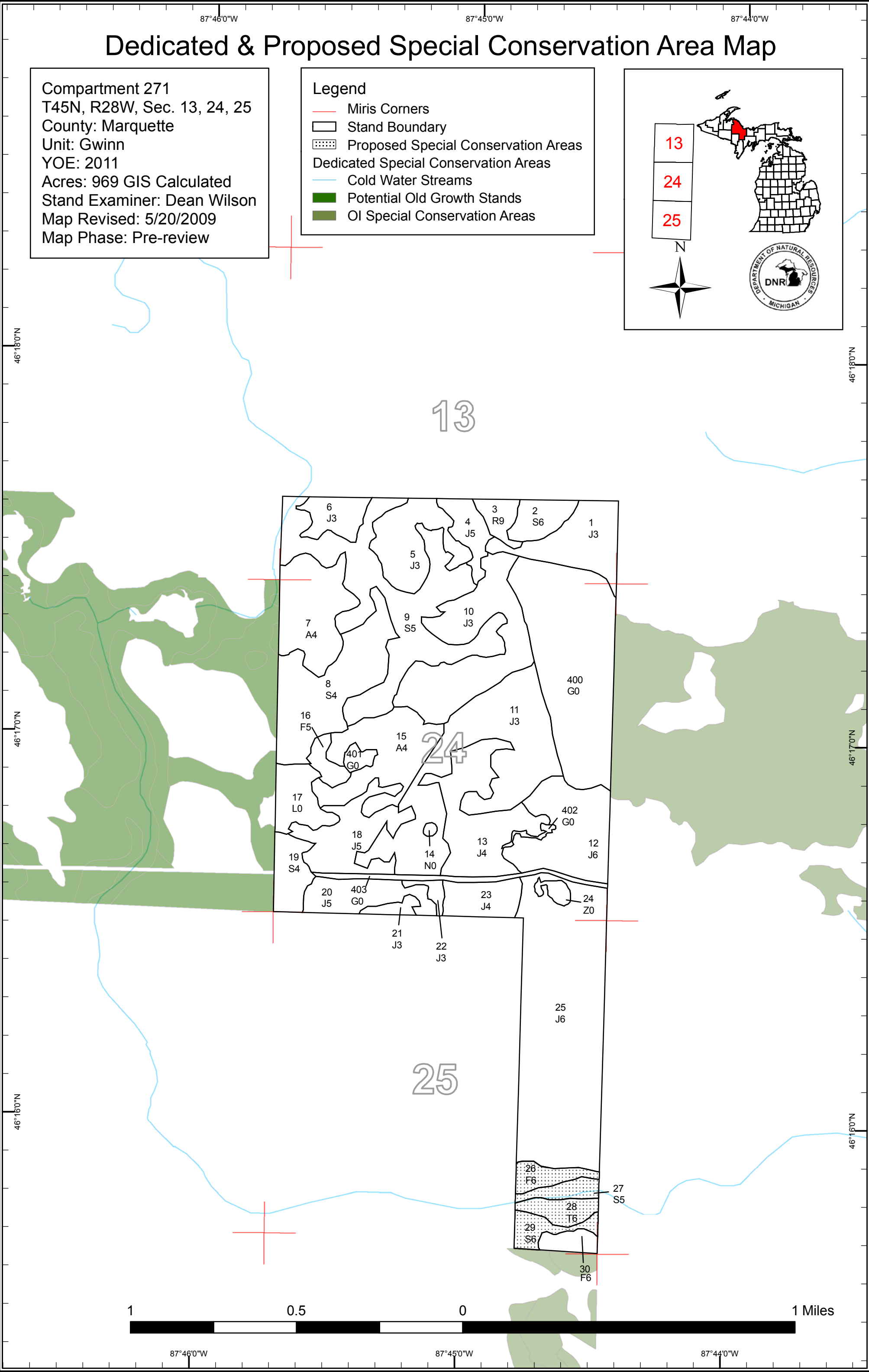
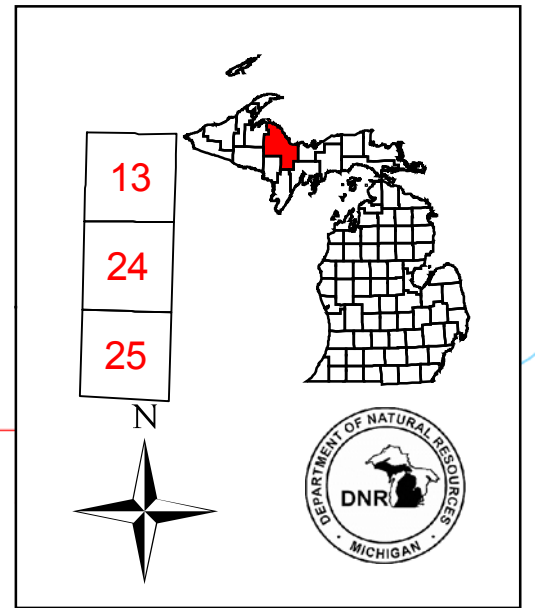


Dedicated & Proposed Special Conservation Area Map

Compartment 271
 T45N, R28W, Sec. 13, 24, 25
 County: Marquette
 Unit: Gwinn
 YOE: 2011
 Acres: 969 GIS Calculated
 Stand Examiner: Dean Wilson
 Map Revised: 5/20/2009
 Map Phase: Pre-review

Legend

- Miris Corners
- Stand Boundary
- Proposed Special Conservation Areas
- Dedicated Special Conservation Areas**
- Cold Water Streams
- Potential Old Growth Stands
- OI Special Conservation Areas



87°46'0"W 87°45'0"W 87°44'0"W

46°18'0"N

46°18'0"N

46°17'0"N

46°17'0"N

46°16'0"N

46°16'0"N



DEDICATED CONSERVATION AREA DETAILS

* This is a list of Dedicated Biodiversity Areas for this compartment along with a 1/4 mile buffer surrounding the compartment. Refer to Dedicated Conservation Area Map for areas that the below listed Conservation Areas are located.

ERA = Ecological Reference Area
HCVA = High Conservation Value Area
SCA = Special Conservation Area

Conservation Area	Type	Description
SCA	Cold Water Stream	A coldwater stream has temperature and dissolved oxygen conditions that allow naturally-reproduced or stocked trout populations and those of other coldwater fish species (e.g., slimy sculpin) to persist from year to year. Coldwater streams in Michigan typically provide these conditions due to substantial contributions of groundwater to their stream flows. Such streams are established by Director's action and designated as trout resources by Fisheries Order 210.
SCA	Potential Old Growth Areas	This category contains stands were identified for a broad range of reasons and were coded in the OI database as stand condition 8 as potential old growth (POG). Approximately 310,000 acres have been identified through the Operations Inventory (OI)/Compartment Review process. For stands in Year of Entry 2008 and forward, potential old growth is managed for the identified objective until it is: 1) vetted through the Biodiversity Conservation Planning Process (BCPP) and given a specific designation and objective (as an ERA, HCVA, or other type of SCA) and is released from the potential old growth designation; or 2) it is released from the potential old growth designation via the Compartment Review process.