

Out of Entry Beech and Ash Project

Beech Bark Disease (BBD) and Emerald Ash Borer (EAB) have moved across much of the Shingleton Management Unit over the past several years, moving from east to west. There has been several salvage operations that have occurred as well as a similar Out of Entry Beech Project which was done with the 2012 YOE. However, BBD and EAB has again advanced faster than expected and since the State operates on a 10 year inventory cycle it is feared that many of the stands with the highest components of ash and beech may be in a stage of decline that will make them in-operable with the current timber markets if they are not treated earlier than their respective entry year. Therefore we are proposing conducting salvage operations in the following compartments and stands. Stands that have not been treated in recent years are coded for selection cuts which are more of a conventional harvest because there is not enough room operationally to just salvage the beech. Each stand will be evaluated after harvest for regeneration needs. Some may require herbicide treatments to treat the beech brush and many will be planted after harvest with either oak saplings or possibly beech bark resistant trees.

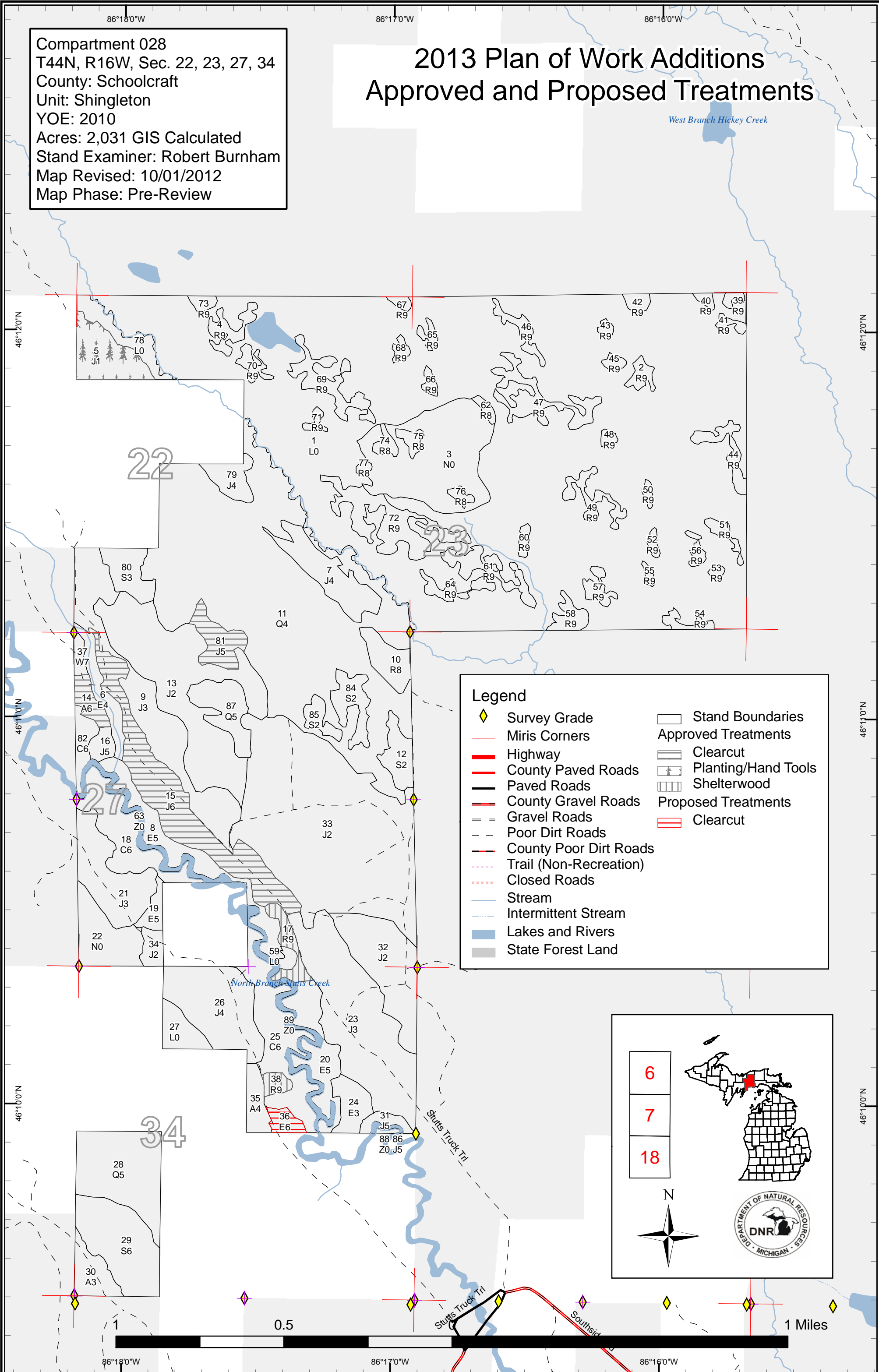
Compartment	Stand	Acres	Cover Type	Treatment
28	36	4	E6	Clearcut with reserves
36	7	88	M6	Beech Salvage
36	20	17	M6	Beech Salvage
41	1	21	M9	Beech Salvage
41	7	44	M6	Beech Salvage
53	41	126	M6	Selection Cut
57	29	62	M6	Selection Cut
68	60	12	M6	Selection Cut
68	61	11	M6	Selection Cut
80	44	94	M9	Beech & Ash Salvage
80	49	16	M9	Beech & Ash Salvage
127	26	18	M6	Clearcut with reserves
147	27	107	UM9	Beech Salvage
151	80	83	M9	Beech Salvage
160	1	7	M6	Beech Salvage
160	2	22	M9	Beech Salvage
160	3	12	M6	Beech Salvage
160	6	20	M6	Beech Salvage
161	2	8	M6	Selection Cut
161	10	79	M6	Beech Salvage
161	11	9	M6	Beech Salvage
161	19	28	M6	Selection Cut
161	22	93	M6	Selection Cut
161	32	34	M6	Selection Cut
161	33	186	M6	Selection Cut

161	46	12	M6	Beech Salvage
161	47	18	M6	Selection Cut
161	48	26	M6	Selection Cut
161	50	34	M6	Beech Salvage
161	59	9	M6	Selection Cut
161	72	11	M6	Selection Cut
161	79	7	M6	Beech Salvage
161	81	11	M6	Selection Cut
161	92	2	M6	Selection Cut
163	1	48	M9	Beech Salvage
167	23	58	M6	Beech Salvage
171	11	82	M6	Beech Salvage
172	29	21	M6	Beech Salvage
195	9	15	M9	Beech Salvage

Compartment 028
 T44N, R16W, Sec. 22, 23, 27, 34
 County: Schoolcraft
 Unit: Shingleton
 YOE: 2010
 Acres: 2,031 GIS Calculated
 Stand Examiner: Robert Burnham
 Map Revised: 10/01/2012
 Map Phase: Pre-Review

2013 Plan of Work Additions Approved and Proposed Treatments

West Branch Hickey Creek



Legend

Survey Grade	Stand Boundaries
Miris Corners	Approved Treatments
Highway	Clearcut
County Paved Roads	Planting/Hand Tools
Paved Roads	Shelterwood
County Gravel Roads	Proposed Treatments
Gravel Roads	Clearcut
Poor Dirt Roads	
County Poor Dirt Roads	
Trail (Non-Recreation)	
Closed Roads	
Stream	
Intermittent Stream	
Lakes and Rivers	
State Forest Land	

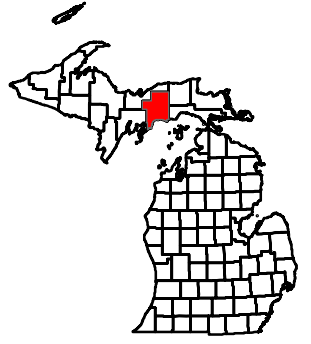


Compartment 36
 T43N, R16W, Sec. 3, 10, 15
 County: Schoolcraft
 Unit: Shingleton
 YOE: 2008
 Acres: 1,005 GIS Calculated
 Stand Examiner: Adam Petrelius
 Map Revised: 10/3/2012
 Map Phase: Pre-Review

Cover Type & Treatment Map

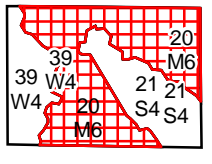
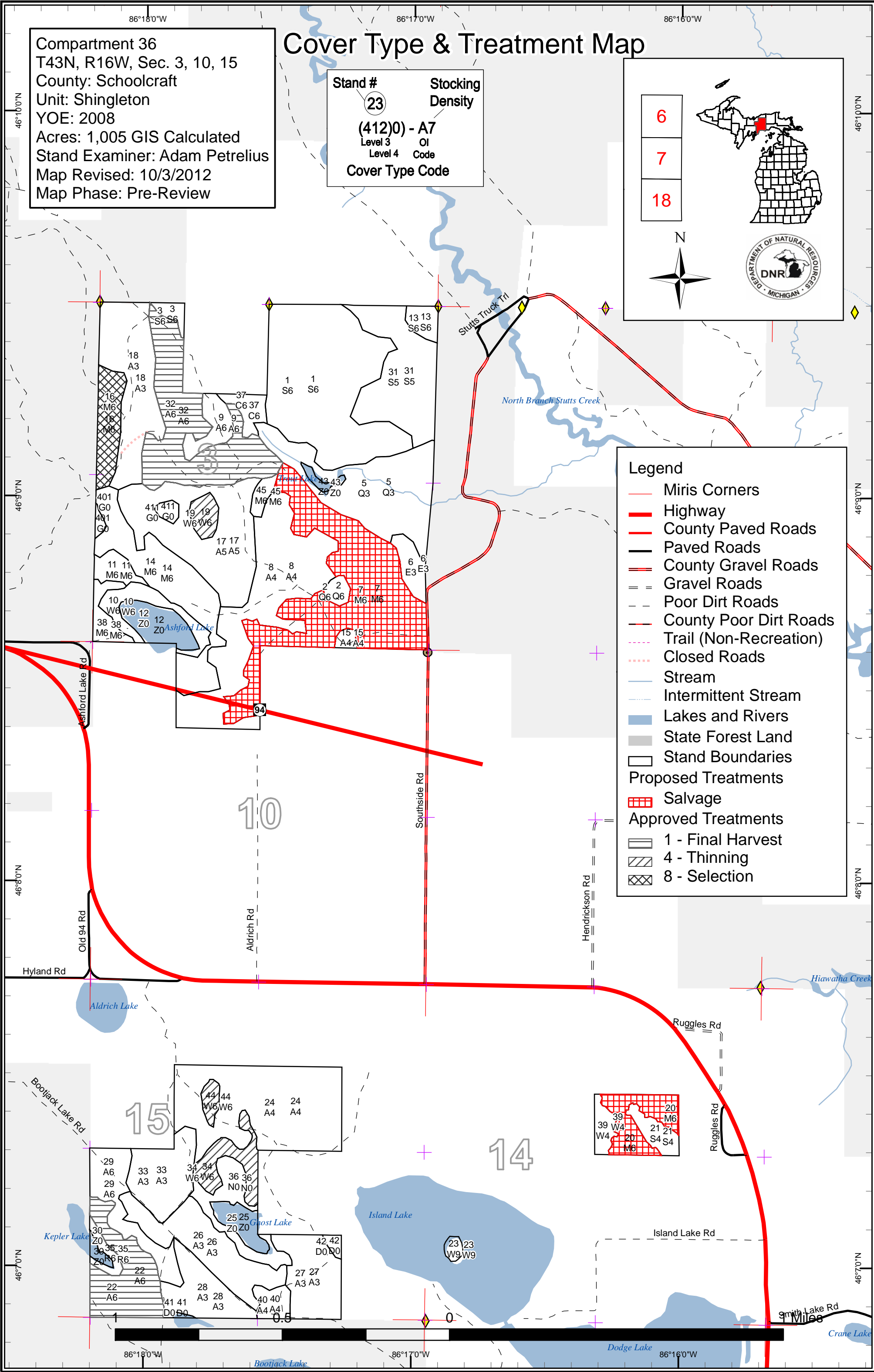
Stand #
 23
Stocking Density
 (412)0 - A7
 Level 3 OI
 Level 4 Code
Cover Type Code

6
 7
 18



Legend

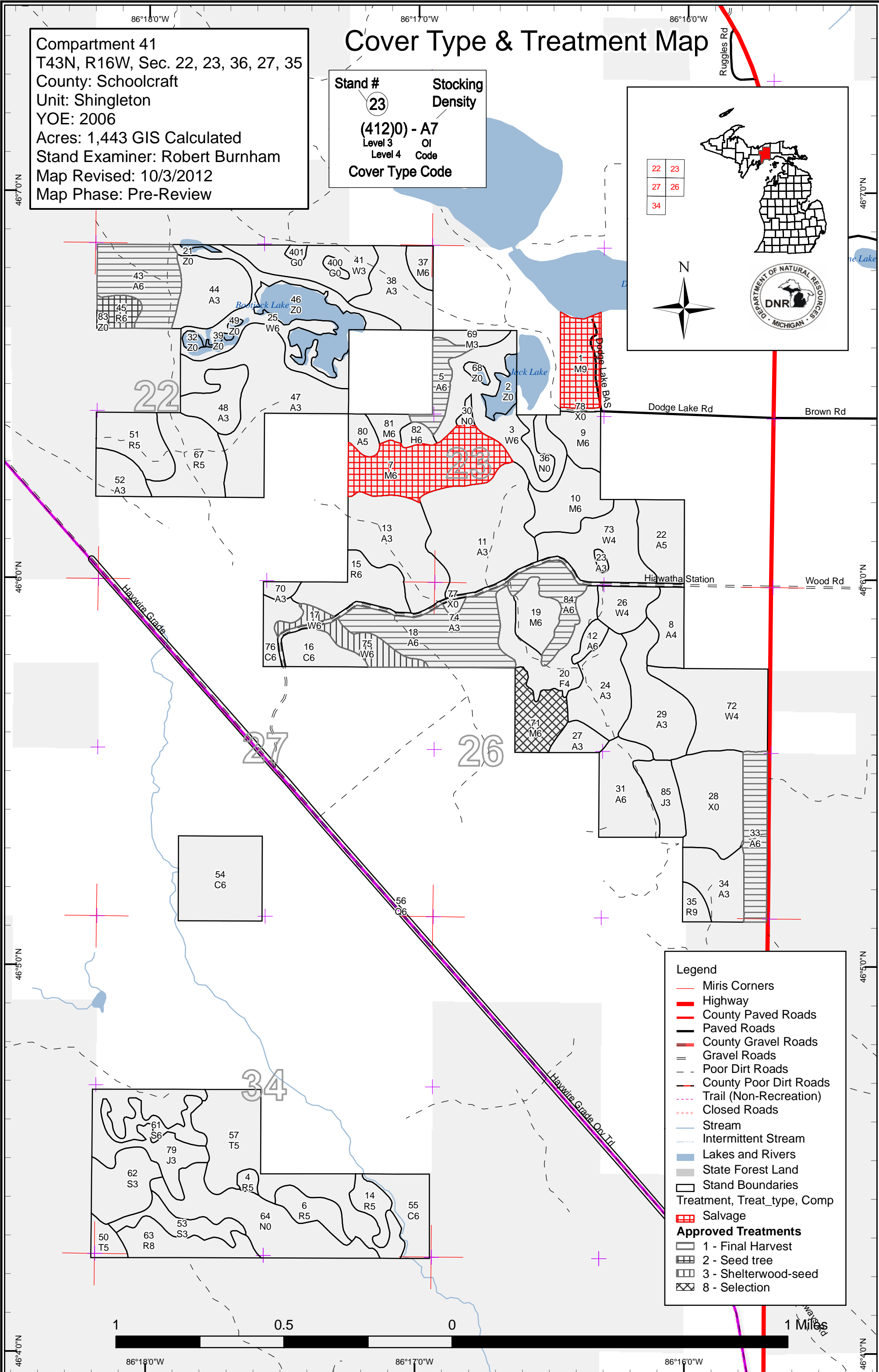
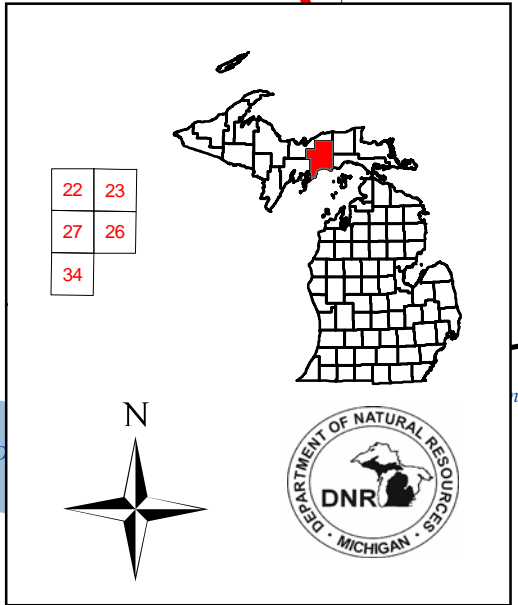
- Miris Corners
- Highway
- County Paved Roads
- Paved Roads
- County Gravel Roads
- Gravel Roads
- Poor Dirt Roads
- County Poor Dirt Roads
- Trail (Non-Recreation)
- Closed Roads
- Stream
- Intermittent Stream
- Lakes and Rivers
- State Forest Land
- Stand Boundaries
- Proposed Treatments**
- Salvage
- Approved Treatments**
- 1 - Final Harvest
- 4 - Thinning
- 8 - Selection



Cover Type & Treatment Map

Compartment 41
 T43N, R16W, Sec. 22, 23, 36, 27, 35
 County: Schoolcraft
 Unit: Shingleton
 YOE: 2006
 Acres: 1,443 GIS Calculated
 Stand Examiner: Robert Burnham
 Map Revised: 10/3/2012
 Map Phase: Pre-Review

Stand # **23**
 Stocking Density
(412)0 - A7
 Level 3 OI
 Level 4 Code
 Cover Type Code



Legend

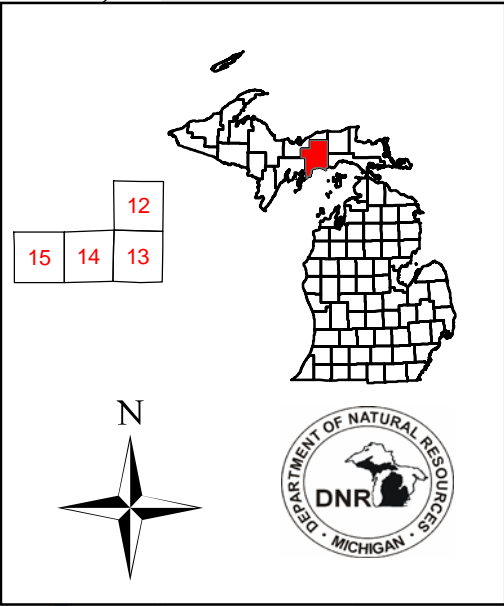
- Miris Corners
- Highway
- County Paved Roads
- Paved Roads
- County Gravel Roads
- Gravel Roads
- Poor Dirt Roads
- County Poor Dirt Roads
- Trail (Non-Recreation)
- Closed Roads
- Stream
- Intermittent Stream
- Lakes and Rivers
- State Forest Land
- Stand Boundaries
- Treatment, Treat_type, Comp
- Salvage

Approved Treatments

- 1 - Final Harvest
- 2 - Seed tree
- 3 - Shelterwood-seed
- 8 - Selection

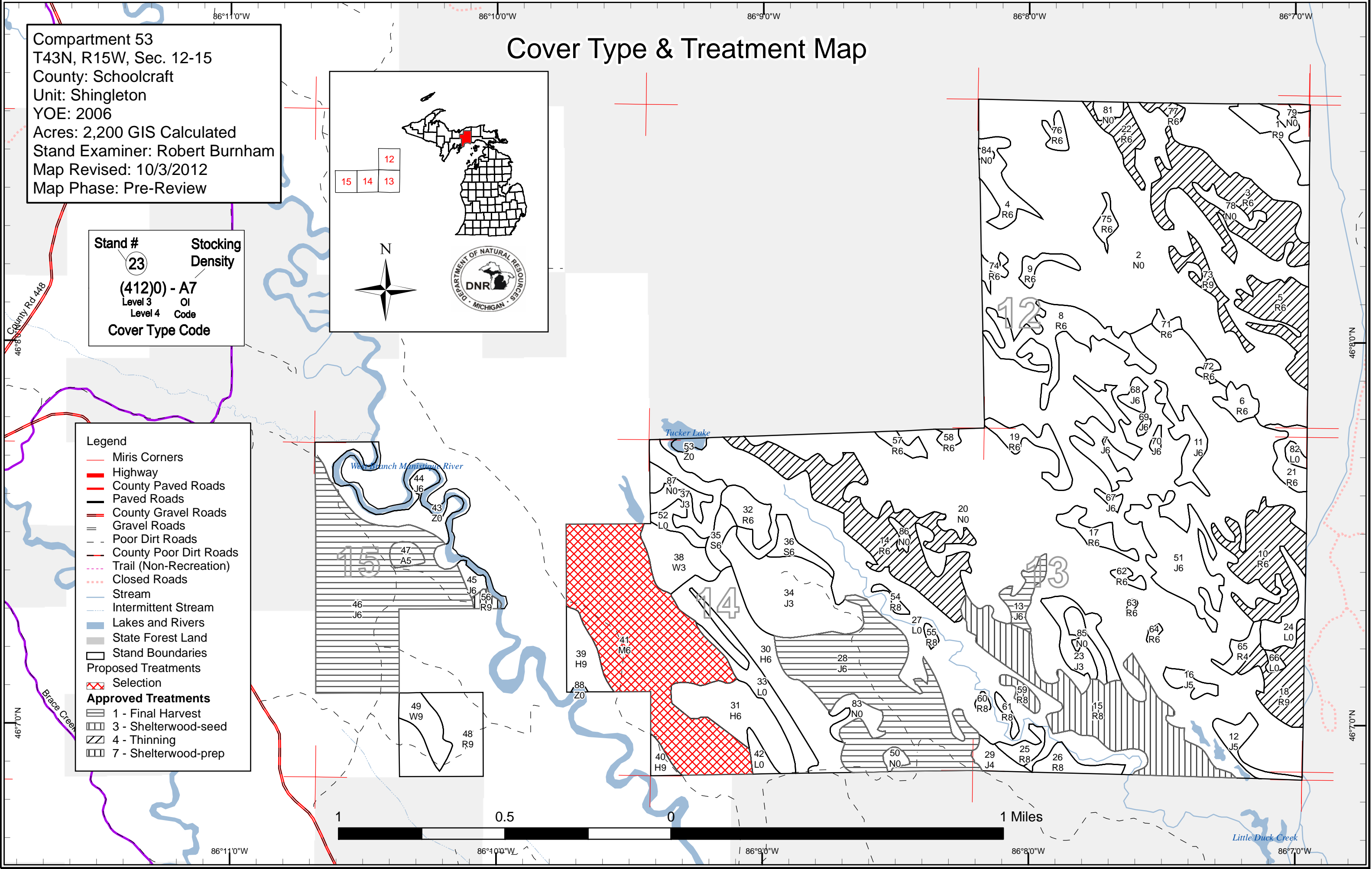
Cover Type & Treatment Map

Compartment 53
 T43N, R15W, Sec. 12-15
 County: Schoolcraft
 Unit: Shingleton
 YOE: 2006
 Acres: 2,200 GIS Calculated
 Stand Examiner: Robert Burnham
 Map Revised: 10/3/2012
 Map Phase: Pre-Review



Stand #
 23
Stocking Density
 (412)0 - A7
 Level 3 OI
 Level 4 Code
Cover Type Code

- Legend**
- Miris Corners
 - Highway
 - County Paved Roads
 - Paved Roads
 - County Gravel Roads
 - Gravel Roads
 - Poor Dirt Roads
 - County Poor Dirt Roads
 - Trail (Non-Recreation)
 - Closed Roads
 - Stream
 - Intermittent Stream
 - Lakes and Rivers
 - State Forest Land
 - Stand Boundaries
 - Proposed Treatments
 - Selection
 - Approved Treatments
 - 1 - Final Harvest
 - 3 - Shelterwood-seed
 - 4 - Thinning
 - 7 - Shelterwood-prep

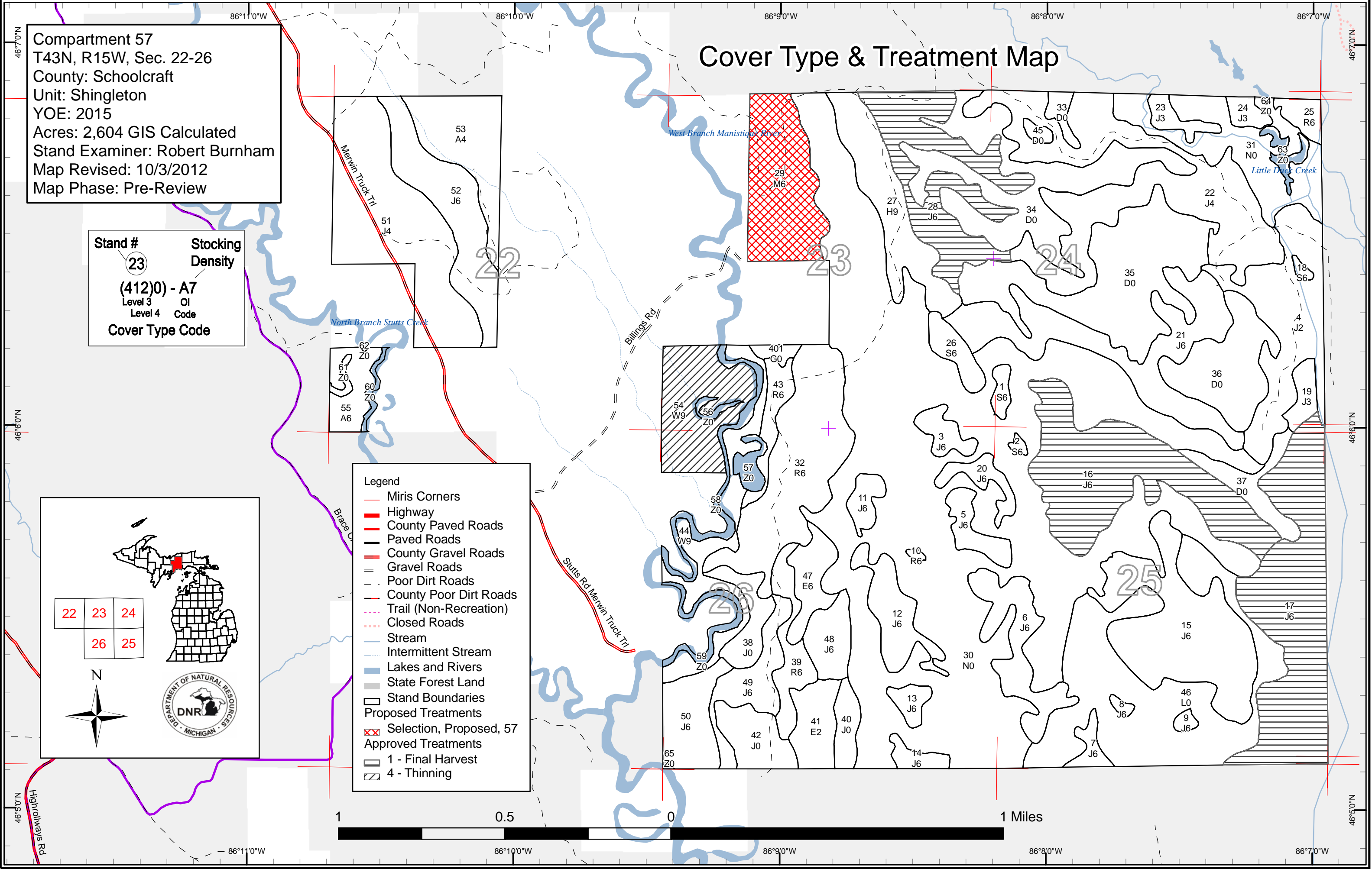


Cover Type & Treatment Map

Compartment 57
 T43N, R15W, Sec. 22-26
 County: Schoolcraft
 Unit: Shingleton
 YOE: 2015
 Acres: 2,604 GIS Calculated
 Stand Examiner: Robert Burnham
 Map Revised: 10/3/2012
 Map Phase: Pre-Review

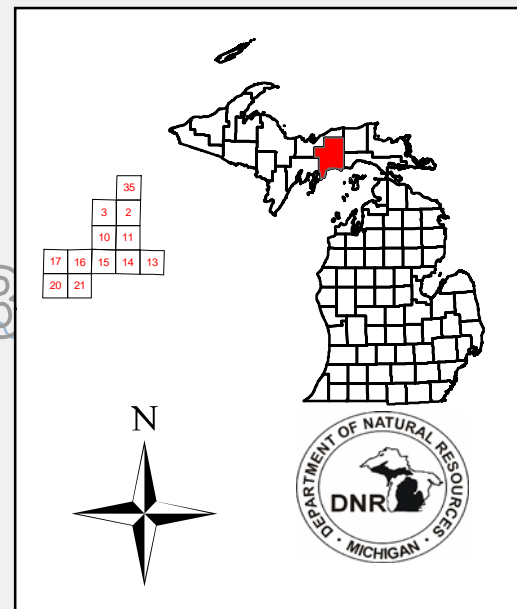
Stand #
 23
Stocking Density
 (412)0 - A7
 Level 3 OI
 Level 4 Code
Cover Type Code

- Legend**
- Miris Corners
 - Highway
 - County Paved Roads
 - Paved Roads
 - County Gravel Roads
 - Gravel Roads
 - Poor Dirt Roads
 - County Poor Dirt Roads
 - Trail (Non-Recreation)
 - Closed Roads
 - Stream
 - Intermittent Stream
 - Lakes and Rivers
 - State Forest Land
 - Stand Boundaries
 - Proposed Treatments**
 - ▣ Selection, Proposed, 57
 - ▣ Approved Treatments
 - ▣ 1 - Final Harvest
 - ▣ 4 - Thinning

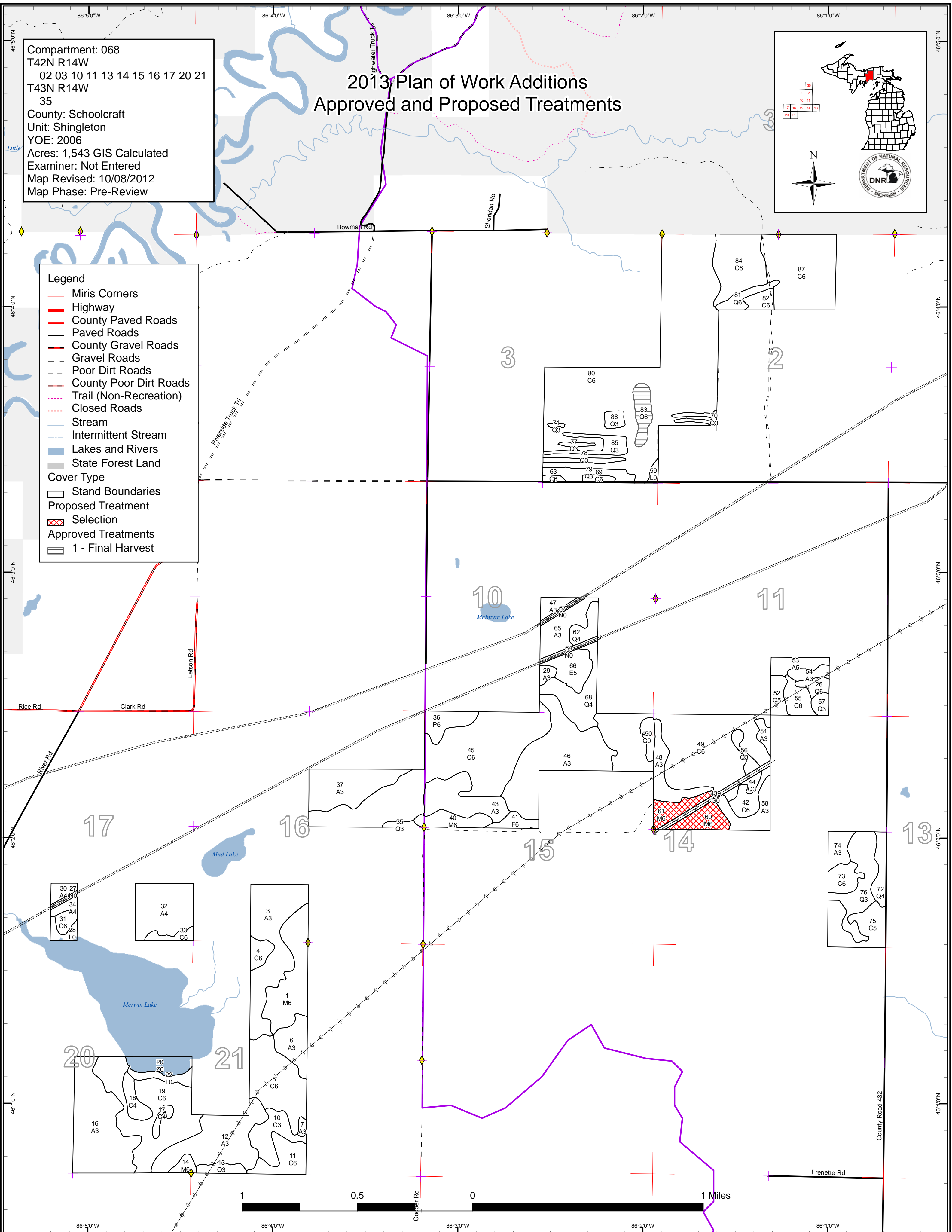


2013 Plan of Work Additions Approved and Proposed Treatments

Compartment: 068
 T42N R14W
 02 03 10 11 13 14 15 16 17 20 21
 T43N R14W
 35
 County: Schoolcraft
 Unit: Shingleton
 YOE: 2006
 Acres: 1,543 GIS Calculated
 Examiner: Not Entered
 Map Revised: 10/08/2012
 Map Phase: Pre-Review

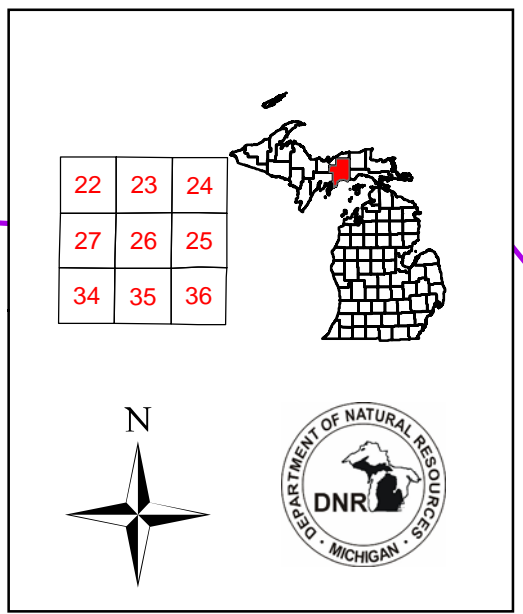


- Legend**
- Miris Corners
 - Highway
 - County Paved Roads
 - Paved Roads
 - County Gravel Roads
 - Gravel Roads
 - Poor Dirt Roads
 - County Poor Dirt Roads
 - Trail (Non-Recreation)
 - Closed Roads
 - Stream
 - Intermittent Stream
 - Lakes and Rivers
 - State Forest Land
 - Cover Type
 - Stand Boundaries
 - Proposed Treatment
 - Selection
 - Approved Treatments
 - 1 - Final Harvest



2013 Plan of Work Additions Approved and Proposed Treatments

Compartment: 080
T42N R17W
22 23 24 25 26 27 34 35 36
County: Schoolcraft
Unit: Shingleton
YOE: 2013
Acres: 1,803 GIS Calculated
Examiner: Robert Burnham
Map Revised: 10/08/2012
Map Phase: Pre-Review



Legend

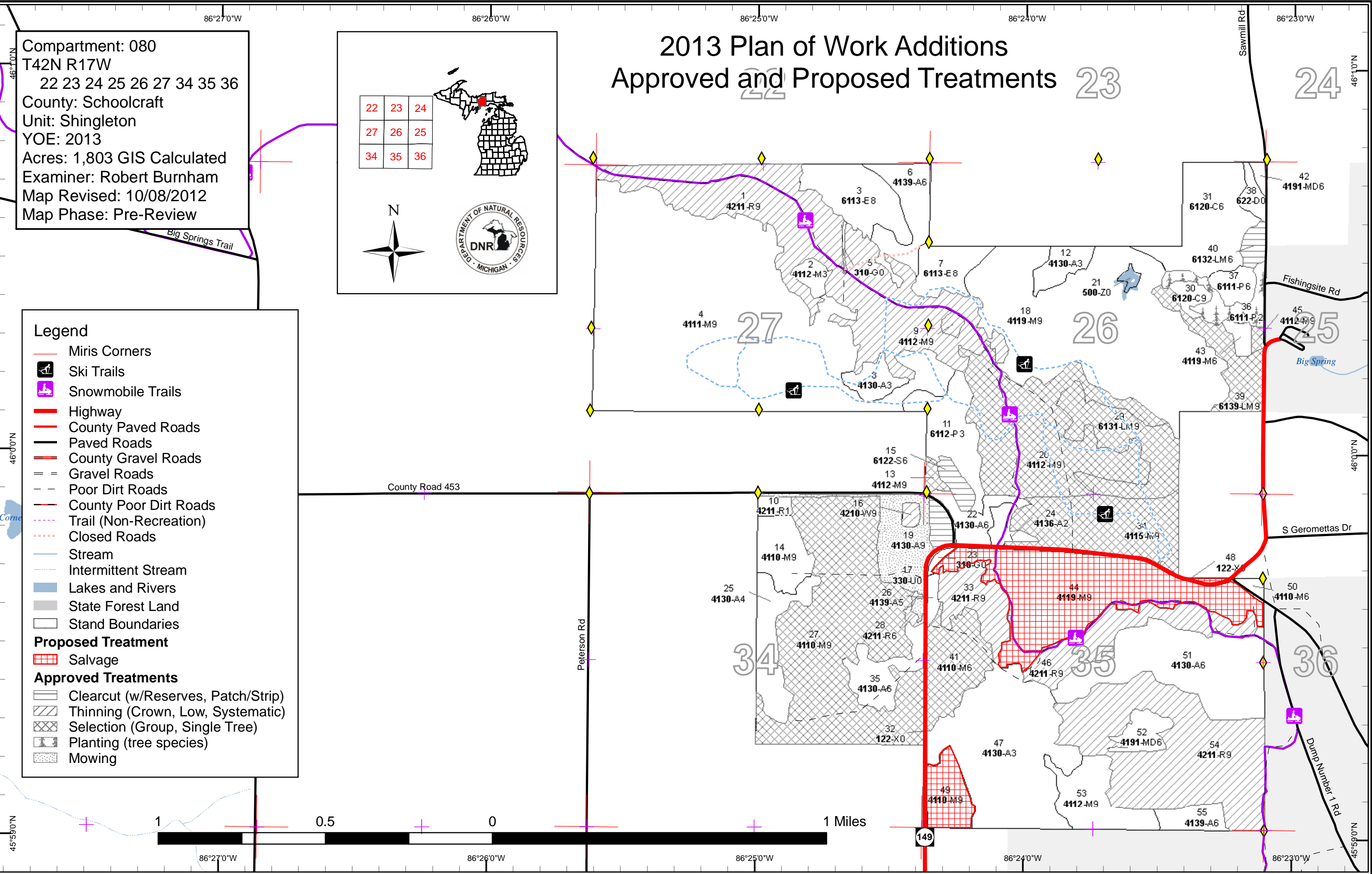
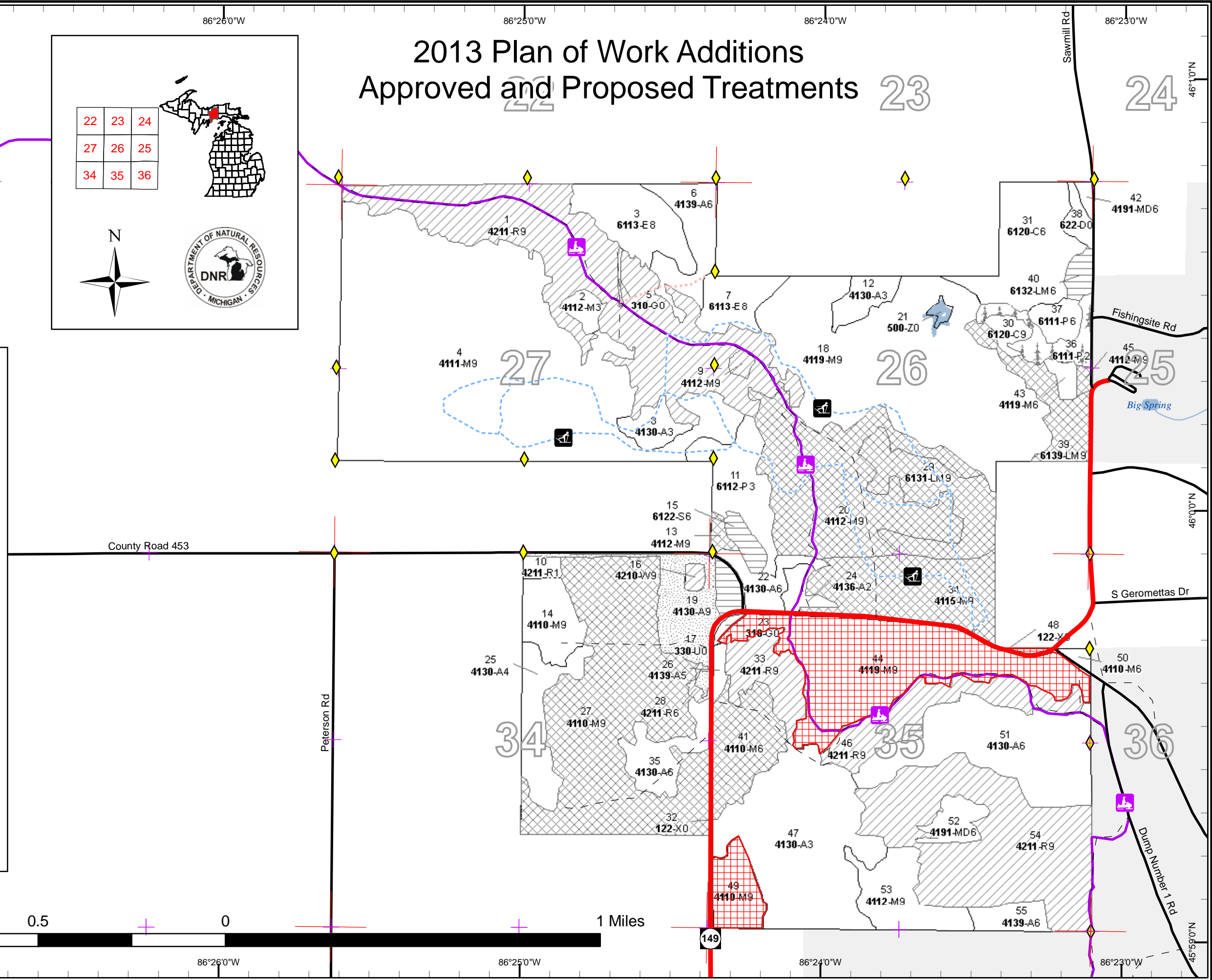
- Miris Corners
- Ski Trails
- Snowmobile Trails
- Highway
- County Paved Roads
- Paved Roads
- County Gravel Roads
- Gravel Roads
- Poor Dirt Roads
- County Poor Dirt Roads
- Trail (Non-Recreation)
- Closed Roads
- Stream
- Intermittent Stream
- Lakes and Rivers
- State Forest Land
- Stand Boundaries

Proposed Treatment

- Salvage

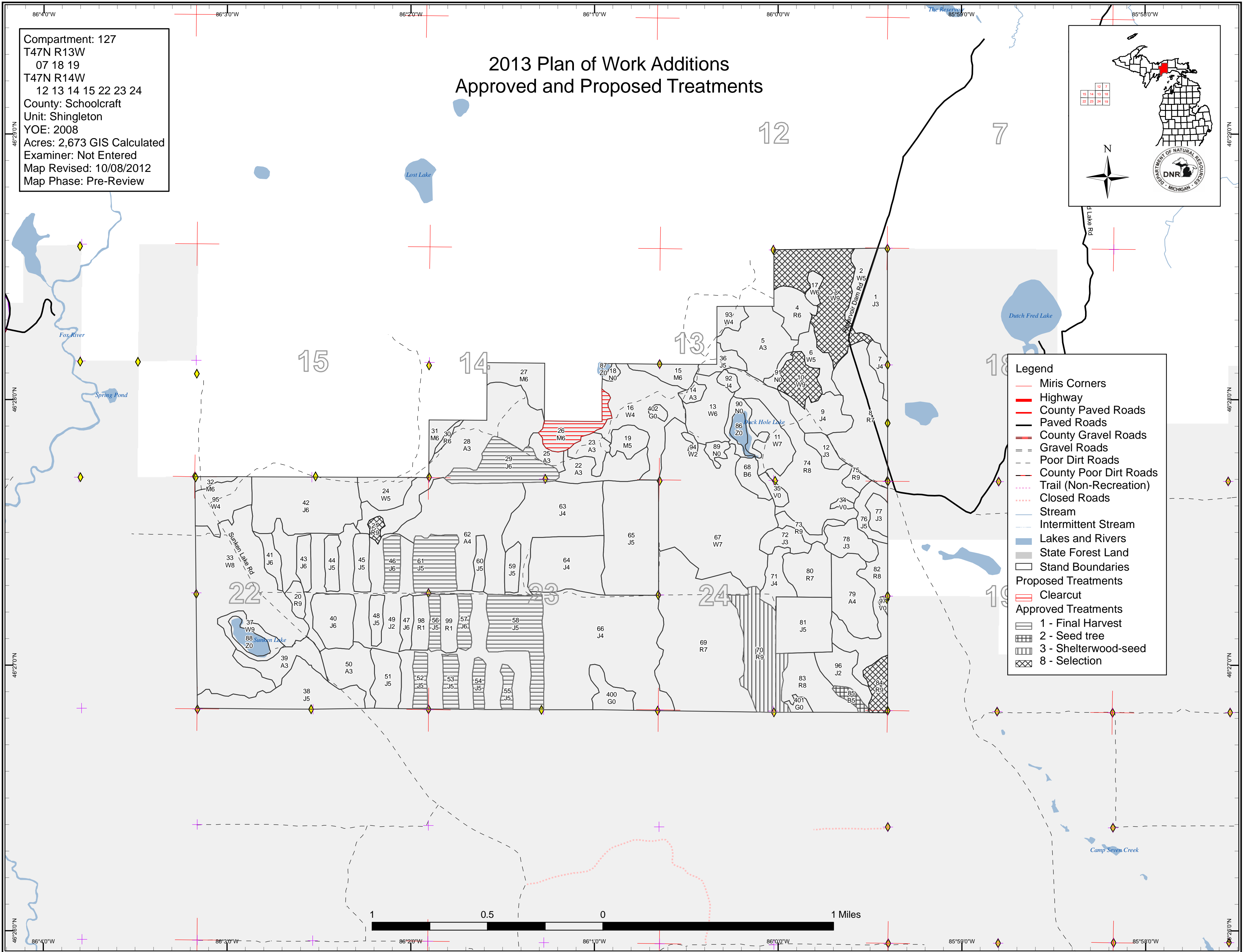
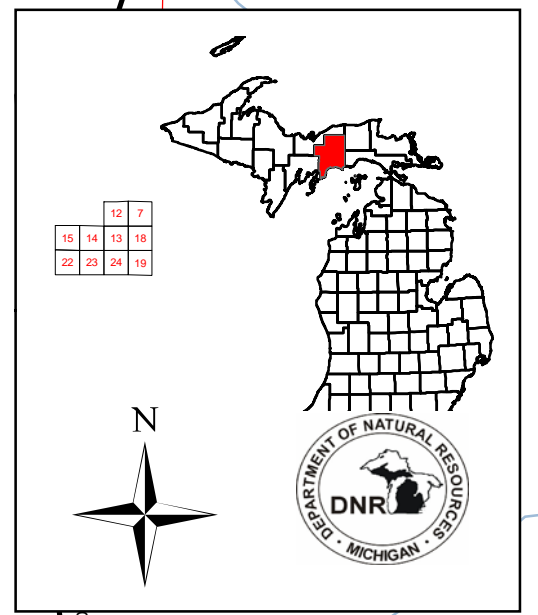
Approved Treatments

- Clearcut (w/Reserves, Patch/Strip)
- Thinning (Crown, Low, Systematic)
- Selection (Group, Single Tree)
- Planting (tree species)
- Mowing



Compartment: 127
 T47N R13W
 07 18 19
 T47N R14W
 12 13 14 15 22 23 24
 County: Schoolcraft
 Unit: Shingleton
 YOE: 2008
 Acres: 2,673 GIS Calculated
 Examiner: Not Entered
 Map Revised: 10/08/2012
 Map Phase: Pre-Review

2013 Plan of Work Additions Approved and Proposed Treatments



Legend

- Miris Corners
- Highway
- County Paved Roads
- Paved Roads
- County Gravel Roads
- Gravel Roads
- Poor Dirt Roads
- County Poor Dirt Roads
- Trail (Non-Recreation)
- Closed Roads
- Stream
- Intermittent Stream
- █ Lakes and Rivers
- State Forest Land
- Stand Boundaries

Proposed Treatments

- Clearcut

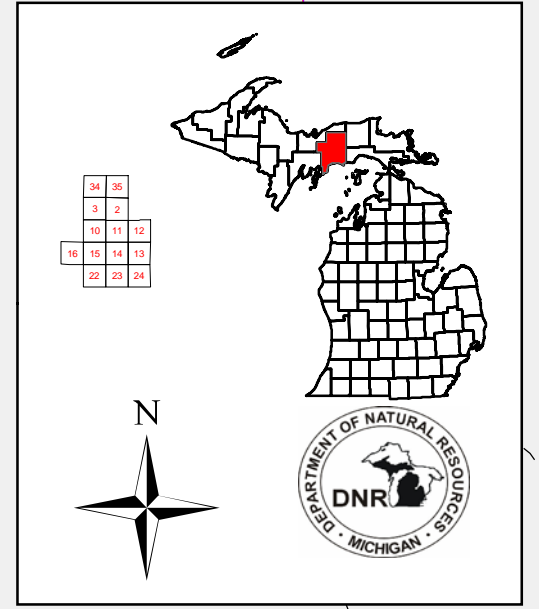
Approved Treatments

- 1 - Final Harvest
- 2 - Seed tree
- 3 - Shelterwood-seed
- 8 - Selection



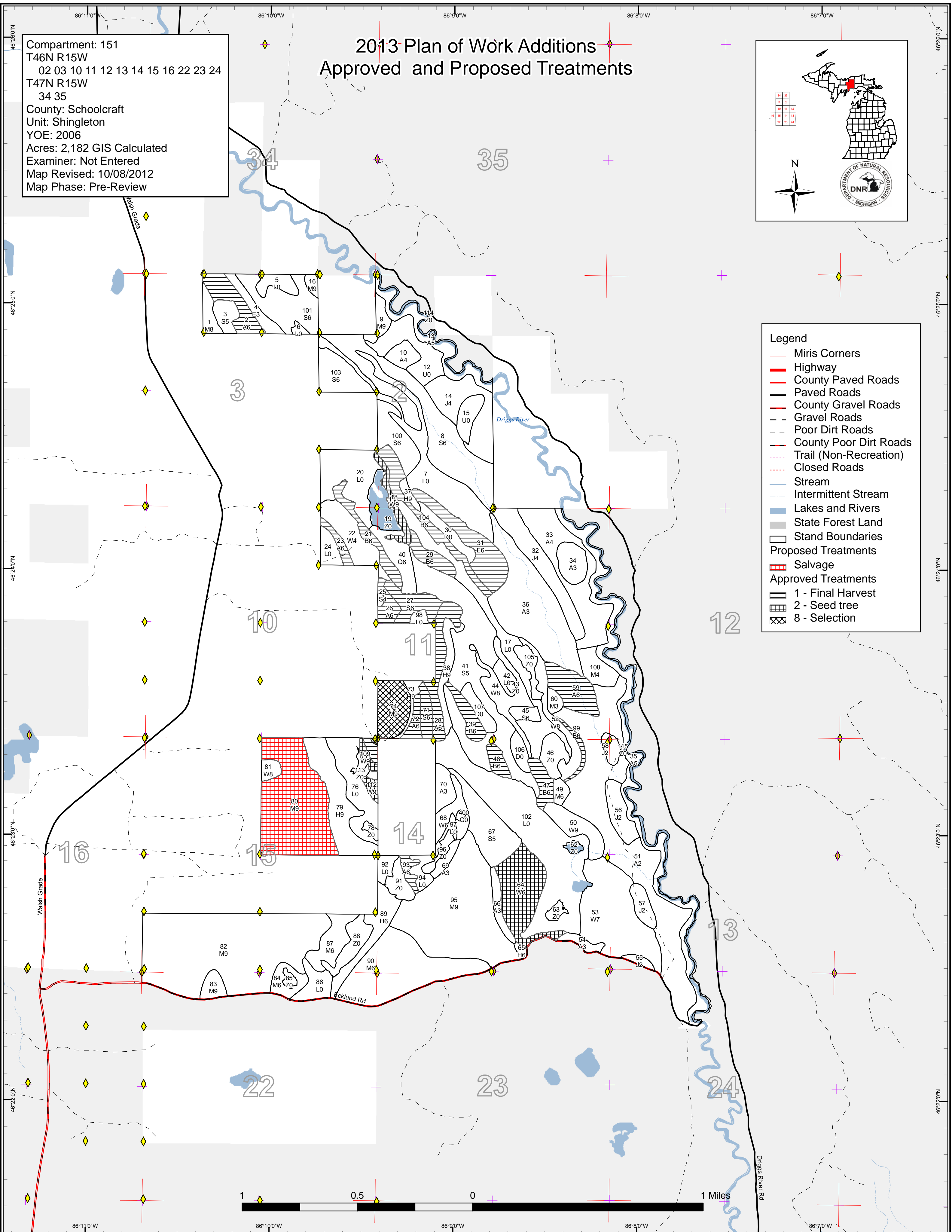
2013 Plan of Work Additions Approved and Proposed Treatments

Compartment: 151
 T46N R15W
 02 03 10 11 12 13 14 15 16 22 23 24
 T47N R15W
 34 35
 County: Schoolcraft
 Unit: Shingleton
 YOE: 2006
 Acres: 2,182 GIS Calculated
 Examiner: Not Entered
 Map Revised: 10/08/2012
 Map Phase: Pre-Review



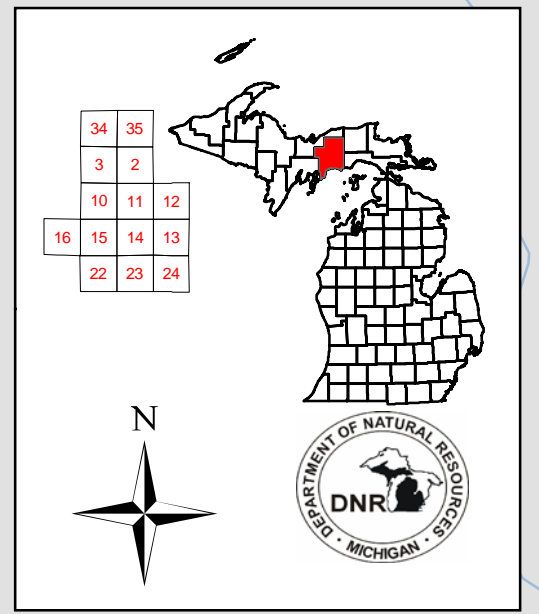
Legend

- Miris Corners
- Highway
- County Paved Roads
- Paved Roads
- County Gravel Roads
- Gravel Roads
- Poor Dirt Roads
- County Poor Dirt Roads
- Trail (Non-Recreation)
- Closed Roads
- Stream
- Intermittent Stream
- Lakes and Rivers
- State Forest Land
- Stand Boundaries
- Proposed Treatments**
- Salvage
- Approved Treatments**
- 1 - Final Harvest
- 2 - Seed tree
- 8 - Selection



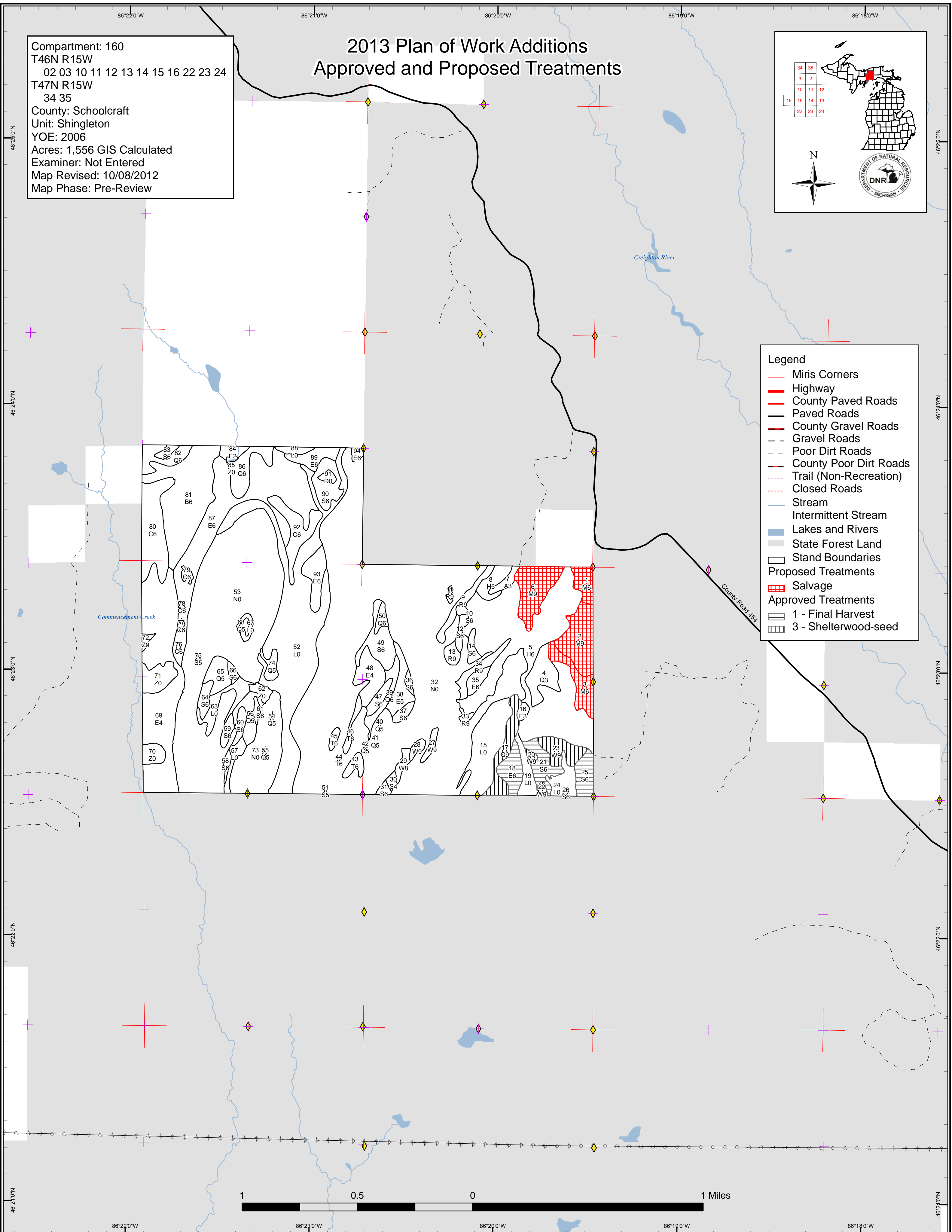
Compartment: 160
 T46N R15W
 02 03 10 11 12 13 14 15 16 22 23 24
 T47N R15W
 34 35
 County: Schoolcraft
 Unit: Shingleton
 YOE: 2006
 Acres: 1,556 GIS Calculated
 Examiner: Not Entered
 Map Revised: 10/08/2012
 Map Phase: Pre-Review

2013 Plan of Work Additions Approved and Proposed Treatments



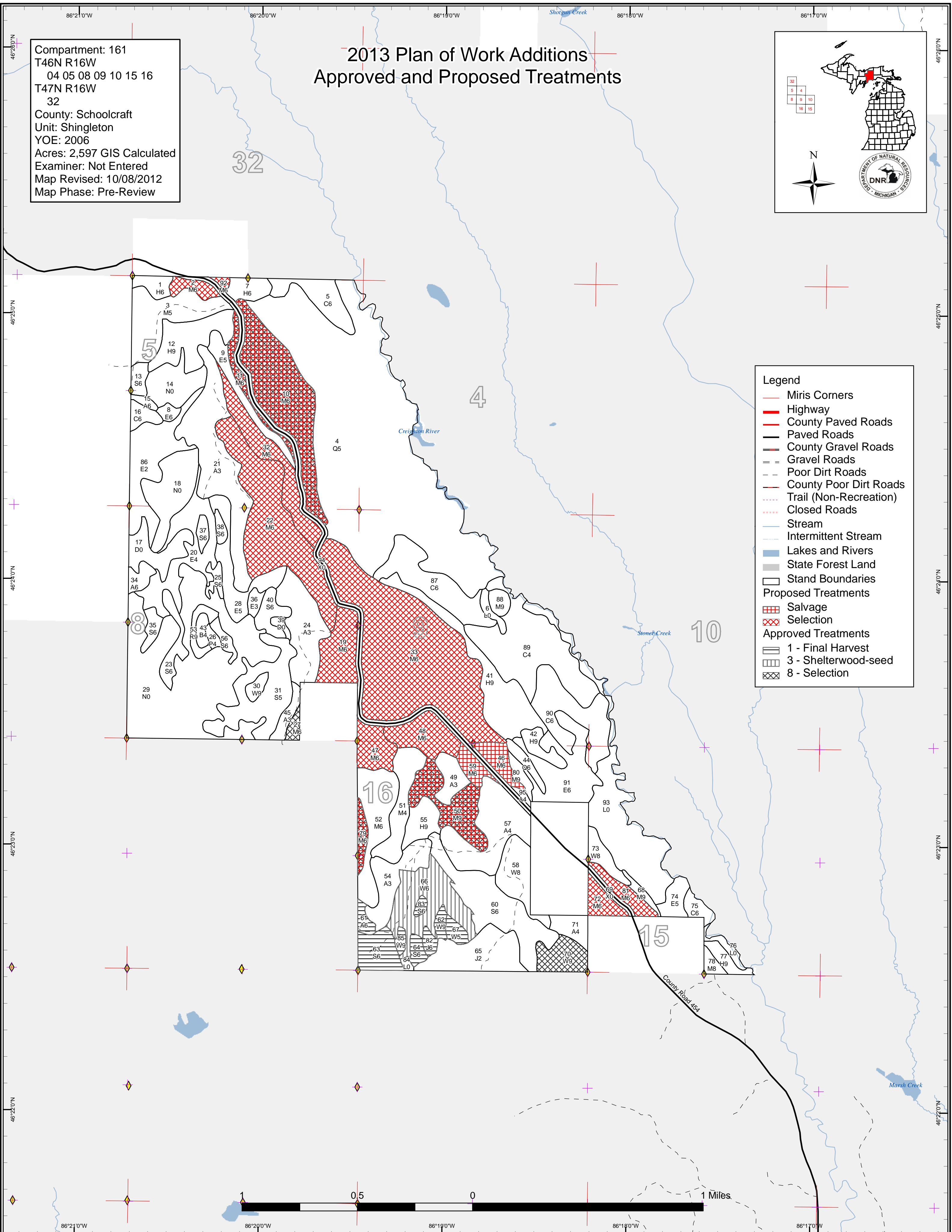
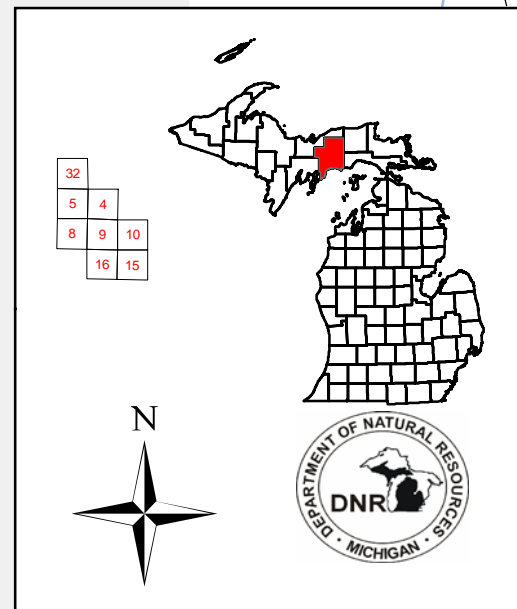
Legend

- + Miris Corners
- Highway
- County Paved Roads
- Paved Roads
- County Gravel Roads
- = Gravel Roads
- - - Poor Dirt Roads
- - - County Poor Dirt Roads
- - - Trail (Non-Recreation)
- - - Closed Roads
- Stream
- - - Intermittent Stream
- █ Lakes and Rivers
- █ State Forest Land
- █ Stand Boundaries
- Proposed Treatments**
- █ Salvage
- Approved Treatments**
- █ 1 - Final Harvest
- █ 3 - Shelterwood-seed



2013 Plan of Work Additions Approved and Proposed Treatments

Compartment: 161
 T46N R16W
 04 05 08 09 10 15 16
 T47N R16W
 32
 County: Schoolcraft
 Unit: Shingleton
 YOE: 2006
 Acres: 2,597 GIS Calculated
 Examiner: Not Entered
 Map Revised: 10/08/2012
 Map Phase: Pre-Review



Legend

- Miris Corners
- Highway
- County Paved Roads
- Paved Roads
- County Gravel Roads
- Gravel Roads
- Poor Dirt Roads
- County Poor Dirt Roads
- Trail (Non-Recreation)
- Closed Roads
- Stream
- Intermittent Stream
- Lakes and Rivers
- State Forest Land
- Stand Boundaries

Proposed Treatments

- ▨ Salvage
- ▩ Selection

Approved Treatments

- ▨ 1 - Final Harvest
- ▩ 3 - Shelterwood-seed
- ▩ 8 - Selection

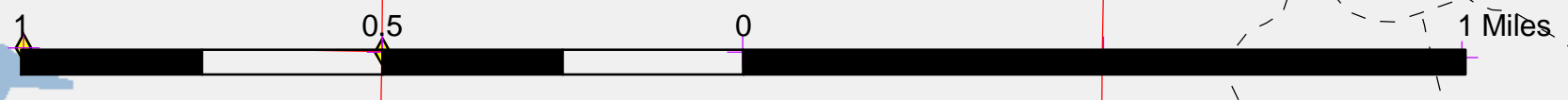
32

4

10

16

15

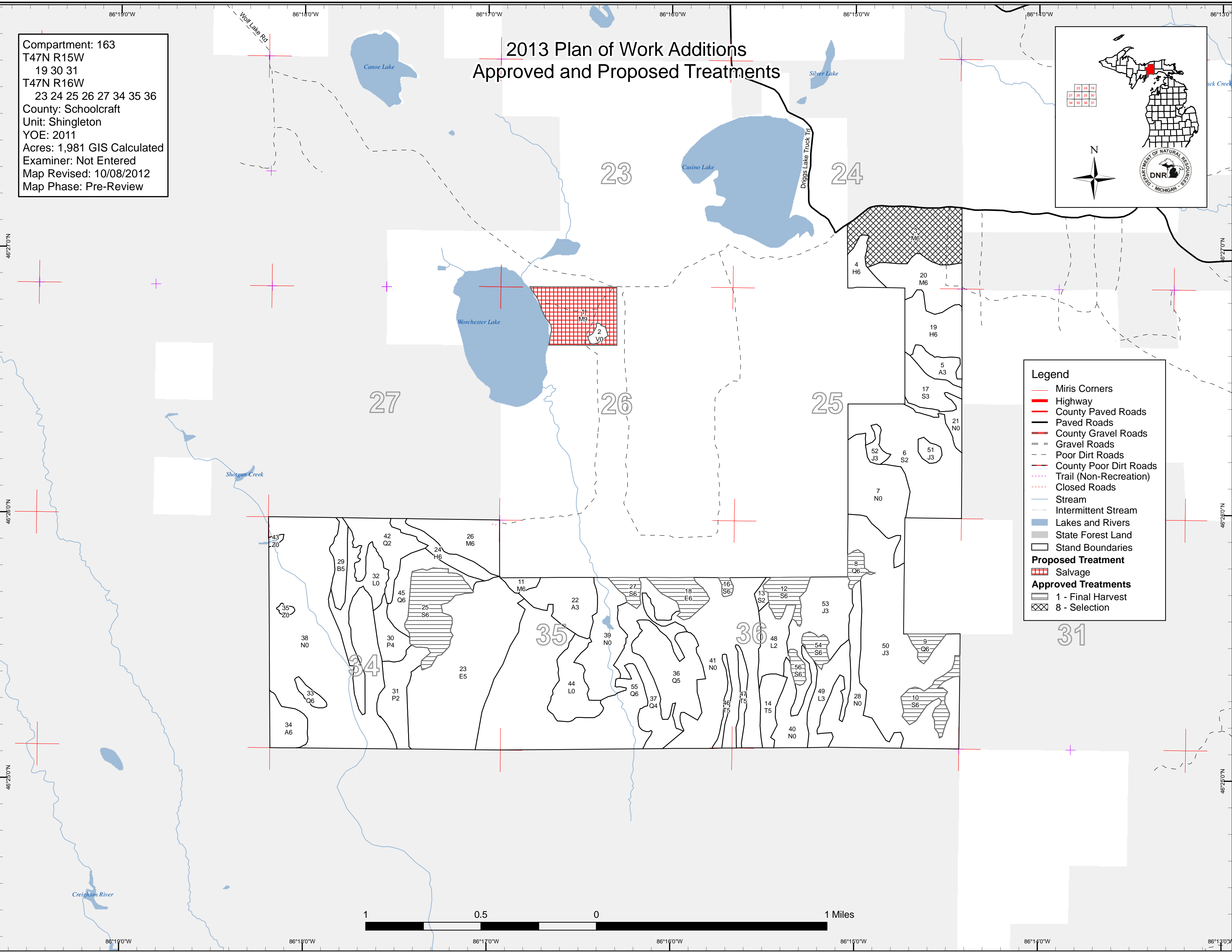
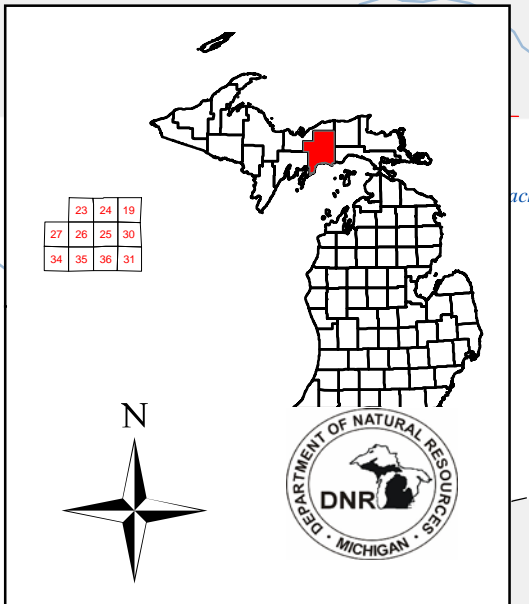


86°21'0"W 86°20'0"W 86°19'0"W 86°18'0"W 86°17'0"W

46°25'0"N 46°24'0"N 46°23'0"N 46°22'0"N 46°21'0"N

Compartment: 163
 T47N R15W
 19 30 31
 T47N R16W
 23 24 25 26 27 34 35 36
 County: Schoolcraft
 Unit: Shingleton
 YOY: 2011
 Acres: 1,981 GIS Calculated
 Examiner: Not Entered
 Map Revised: 10/08/2012
 Map Phase: Pre-Review

2013 Plan of Work Additions Approved and Proposed Treatments



Legend

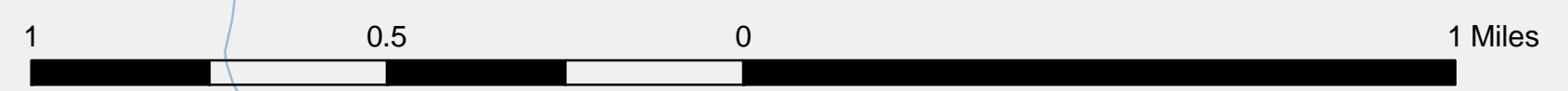
- Miris Corners
- Highway
- County Paved Roads
- Paved Roads
- County Gravel Roads
- Gravel Roads
- Poor Dirt Roads
- County Poor Dirt Roads
- Trail (Non-Recreation)
- Closed Roads
- Stream
- Intermittent Stream
- Lakes and Rivers
- State Forest Land
- Stand Boundaries

Proposed Treatment

- ▨ Salvage

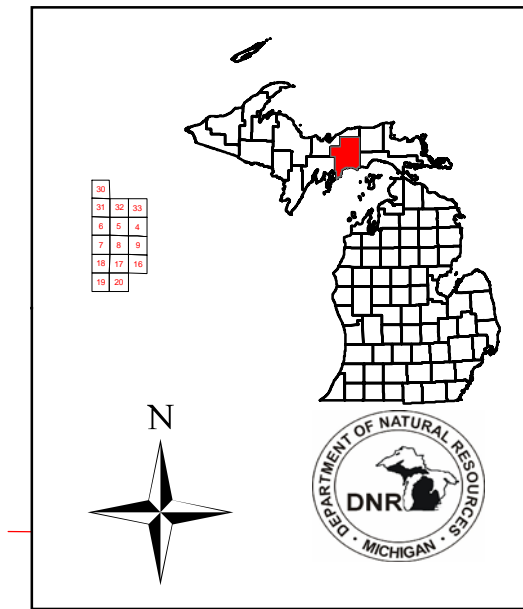
Approved Treatments

- ▨ 1 - Final Harvest
- ▨ 8 - Selection



2013 Plan of Work Additions Approved and Proposed Treatments

Compartment: 167
 T47N R16W
 04 05 06 07 08 09 16 17 18 19 20
 T48N R16W
 30 31 32 33
 County: Schoolcraft
 Unit: Shingleton
 YOY: 2008
 Acres: 3,427 GIS Calculated
 Examiner: Not Entered
 Map Revised: 10/09/2012
 Map Phase: Pre-Review



Legend

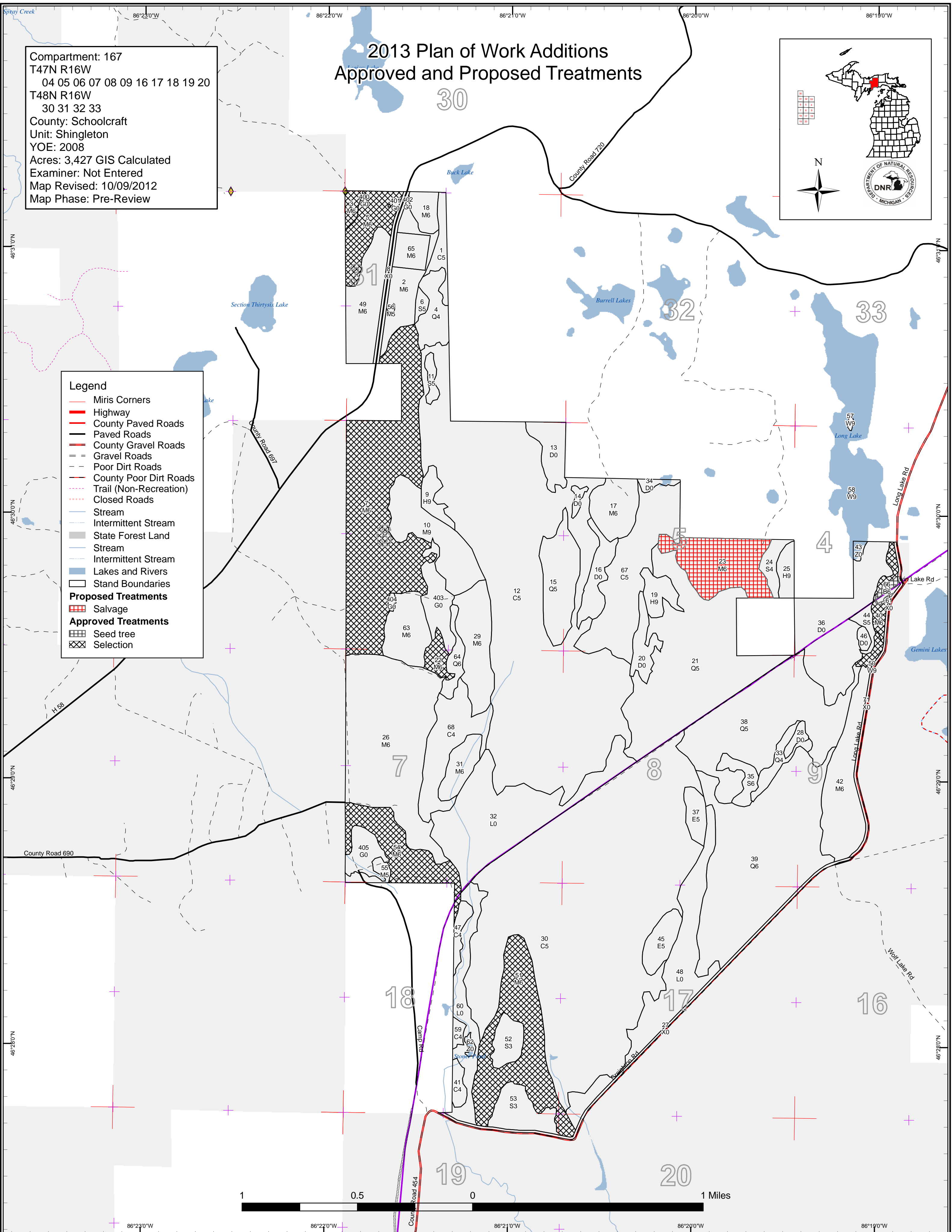
- Miris Corners
- Highway
- County Paved Roads
- Paved Roads
- County Gravel Roads
- - Gravel Roads
- - Poor Dirt Roads
- - County Poor Dirt Roads
- - Trail (Non-Recreation)
- - Closed Roads
- Stream
- Intermittent Stream
- State Forest Land
- Stream
- Intermittent Stream
- Lakes and Rivers
- Stand Boundaries

Proposed Treatments

- ▨ Salvage

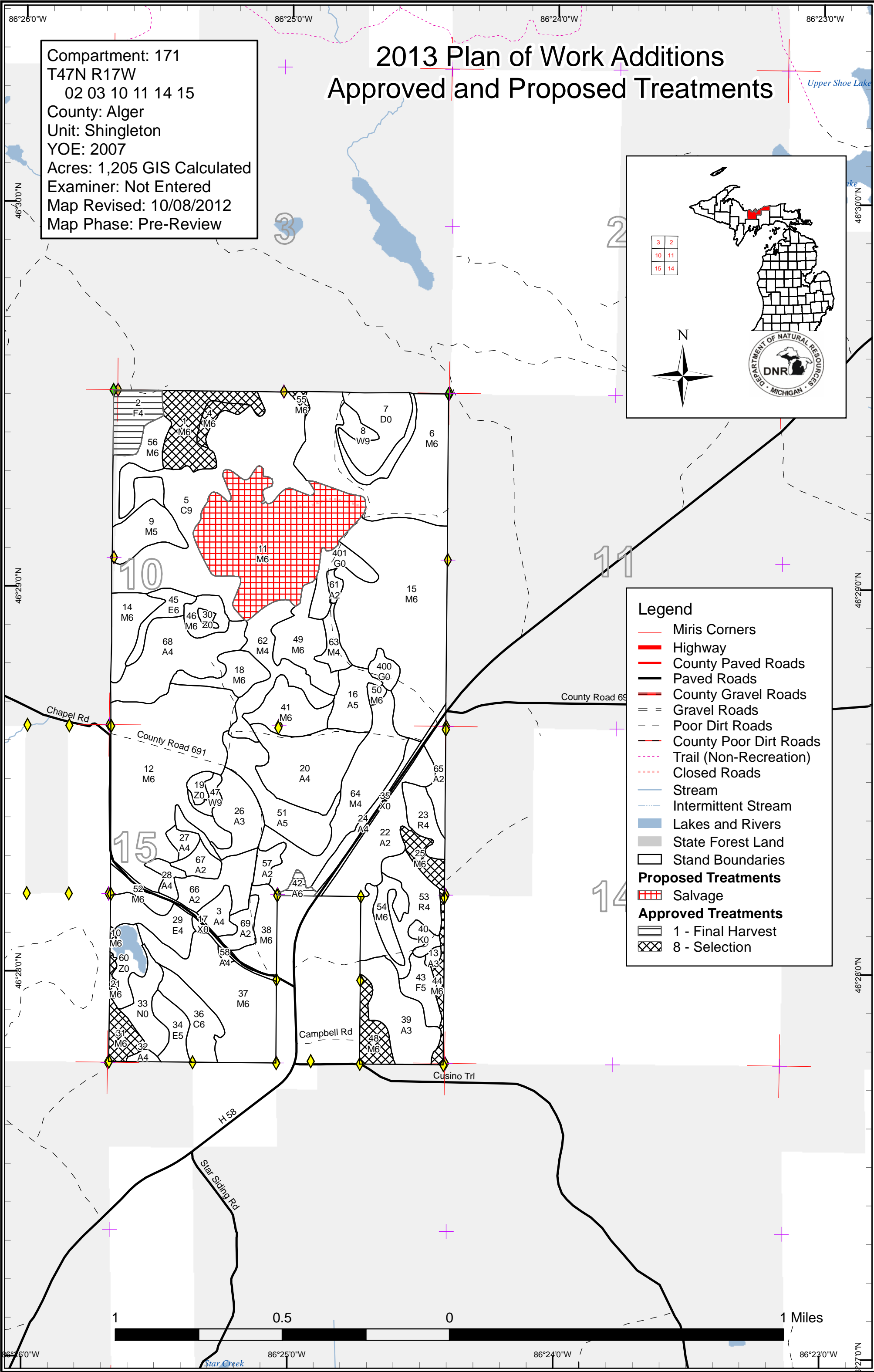
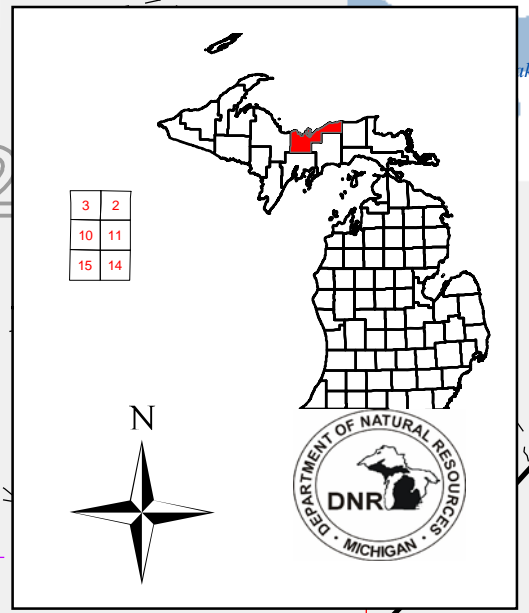
Approved Treatments

- ▨ Seed tree
- ▨ Selection



2013 Plan of Work Additions Approved and Proposed Treatments

Compartment: 171
 T47N R17W
 02 03 10 11 14 15
 County: Alger
 Unit: Shingleton
 YOE: 2007
 Acres: 1,205 GIS Calculated
 Examiner: Not Entered
 Map Revised: 10/08/2012
 Map Phase: Pre-Review



Legend

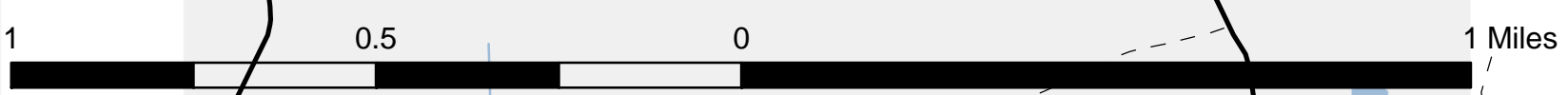
- Miris Corners
- Highway
- County Paved Roads
- Paved Roads
- County Gravel Roads
- Gravel Roads
- Poor Dirt Roads
- County Poor Dirt Roads
- Trail (Non-Recreation)
- Closed Roads
- Stream
- Intermittent Stream
- Lakes and Rivers
- State Forest Land
- Stand Boundaries

Proposed Treatments

- ▣ Salvage

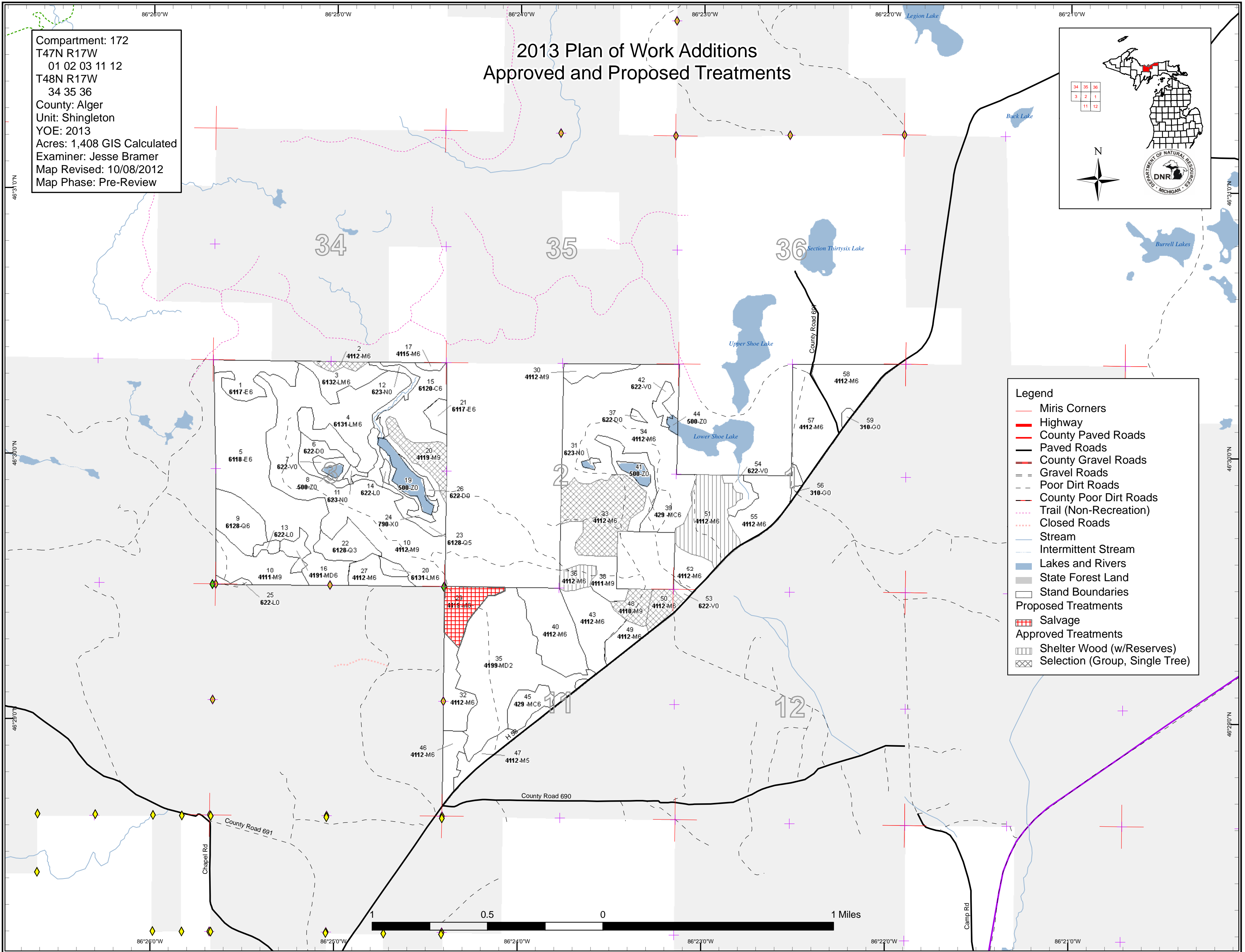
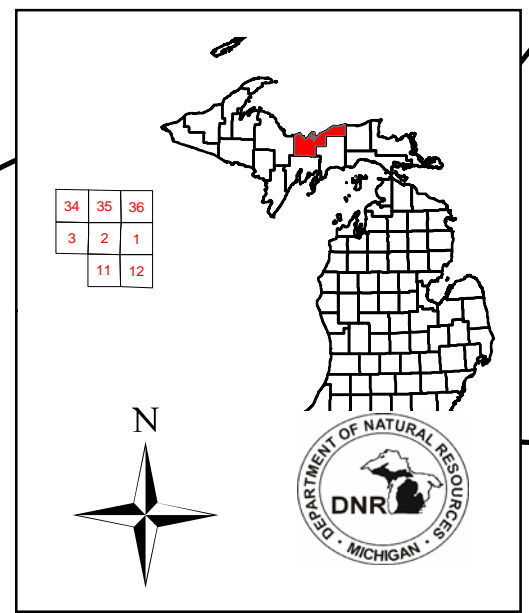
Approved Treatments

- ▣ 1 - Final Harvest
- ▣ 8 - Selection



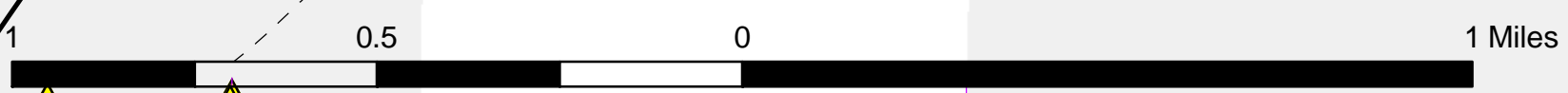
2013 Plan of Work Additions Approved and Proposed Treatments

Compartment: 172
 T47N R17W
 01 02 03 11 12
 T48N R17W
 34 35 36
 County: Alger
 Unit: Shingleton
 YOE: 2013
 Acres: 1,408 GIS Calculated
 Examiner: Jesse Bramer
 Map Revised: 10/08/2012
 Map Phase: Pre-Review



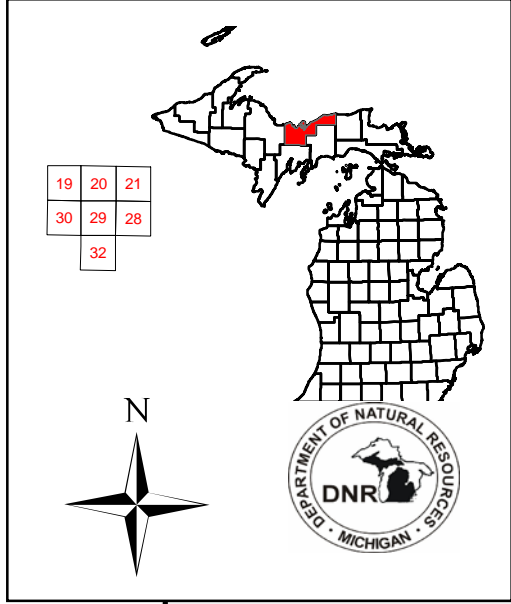
Legend

- Miris Corners
- Highway
- County Paved Roads
- Paved Roads
- County Gravel Roads
- Gravel Roads
- Poor Dirt Roads
- County Poor Dirt Roads
- Trail (Non-Recreation)
- Closed Roads
- Stream
- Intermittent Stream
- Lakes and Rivers
- State Forest Land
- Stand Boundaries
- Proposed Treatments
- Salvage
- Approved Treatments
- Shelter Wood (w/Reserves)
- Selection (Group, Single Tree)



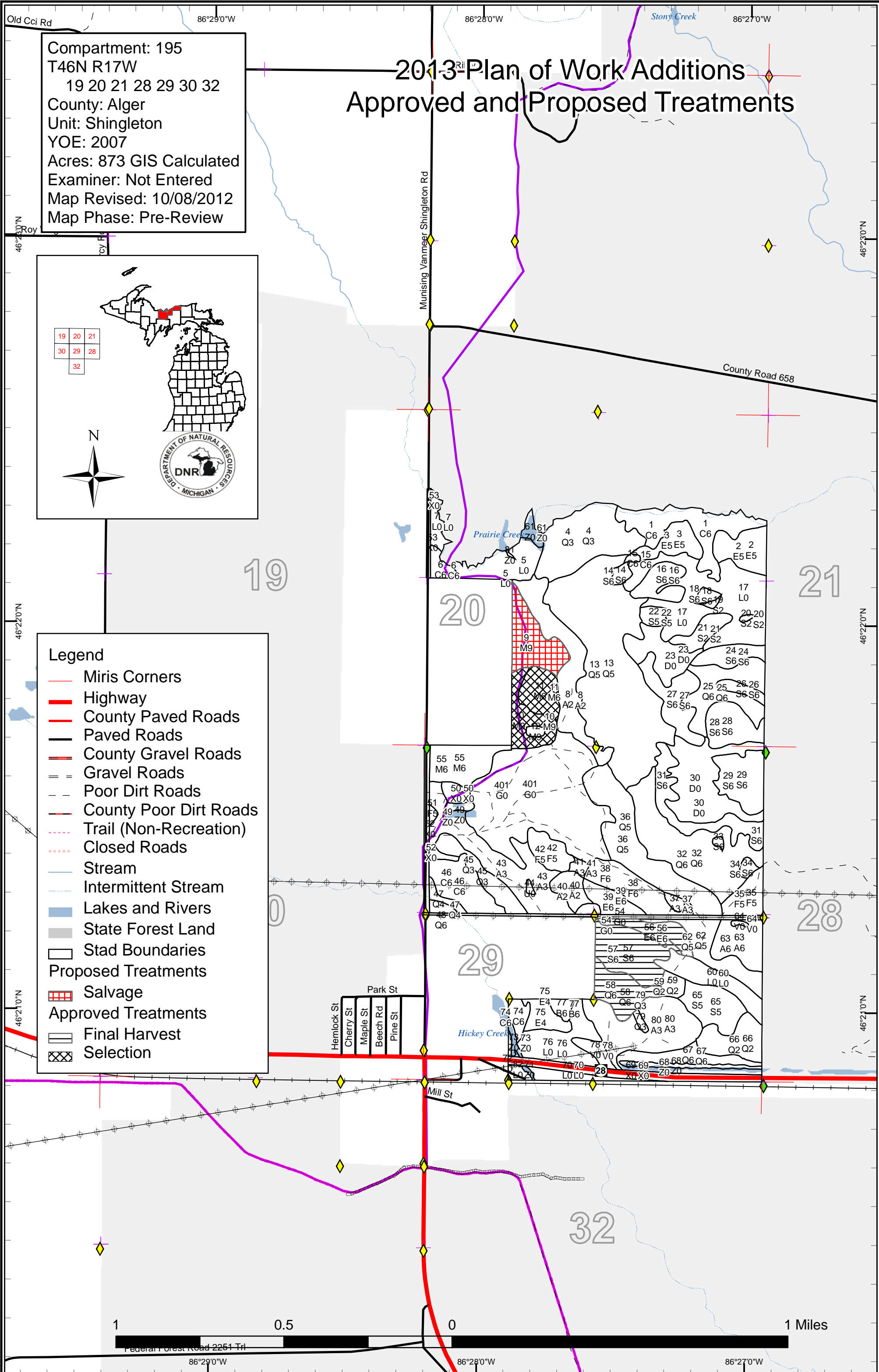
2013 Plan of Work Additions Approved and Proposed Treatments

Compartment: 195
 T46N R17W
 19 20 21 28 29 30 32
 County: Alger
 Unit: Shingleton
 YOY: 2007
 Acres: 873 GIS Calculated
 Examiner: Not Entered
 Map Revised: 10/08/2012
 Map Phase: Pre-Review



Legend

- Miris Corners
- Highway
- County Paved Roads
- Paved Roads
- County Gravel Roads
- Gravel Roads
- - - Poor Dirt Roads
- - - County Poor Dirt Roads
- - - Trail (Non-Recreation)
- - - Closed Roads
- Stream
- - - Intermittent Stream
- █ Lakes and Rivers
- █ State Forest Land
- Stad Boundaries
- █ Proposed Treatments
- █ Approved Treatments
- Final Harvest
- Selection



1 0.5 0 1 Miles

Federal Forest Road 2251 Trl 86°29'0"W 86°28'0"W 86°27'0"W