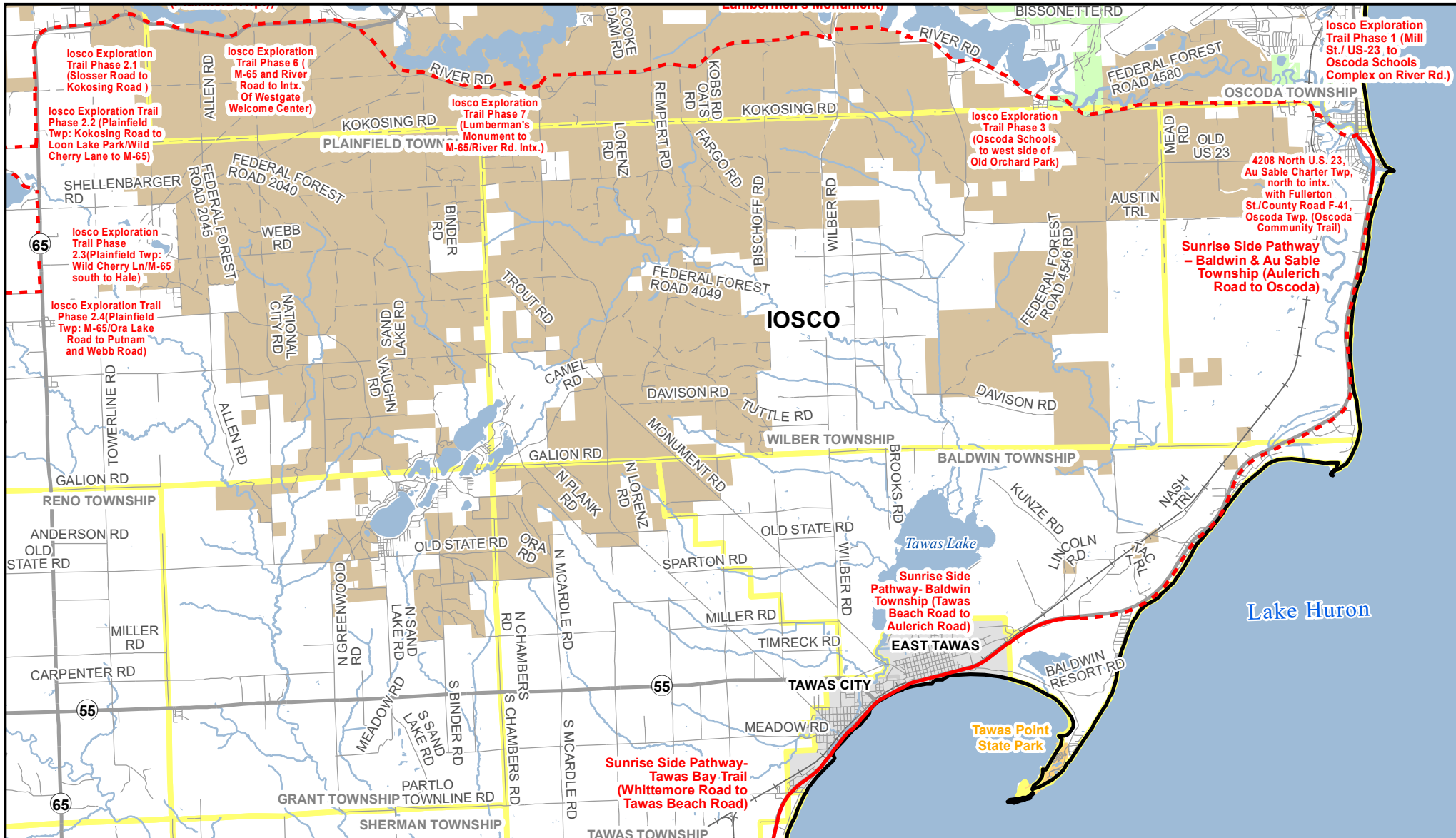




Michigan's Iron Belle Trail - Two Routes, One Great Trail

Sunrise Side Pathway on US-23 - Oscoda Community Trail - Iosco County River Pathway



** The illustrated hike and bicycle trail connections will rely upon partnership opportunities. **

0 1.5 3 Miles
 Updated: 4/12/2021
 Michigan Department of Natural Resources
 Forest Resources Division
 Resource Assessment Section

- | | | |
|---------------------------|-----------------------|------------|
| Iron Belle Trail | — Railroad | ▭ Township |
| — Existing Biking | — River | ▭ County |
| - - - Proposed Biking | — Lake | |
| — Highway | — State Park boundary | |
| — Paved road | — State land | |
| - - - Gravel or dirt road | — Federal land | |
| | — City or Village | |

