

Open for Public Hunting
Hunting Access Program



Hunt types and seasons may vary. Details available at the Farm Headquarters.
www.michigan.gov/hap

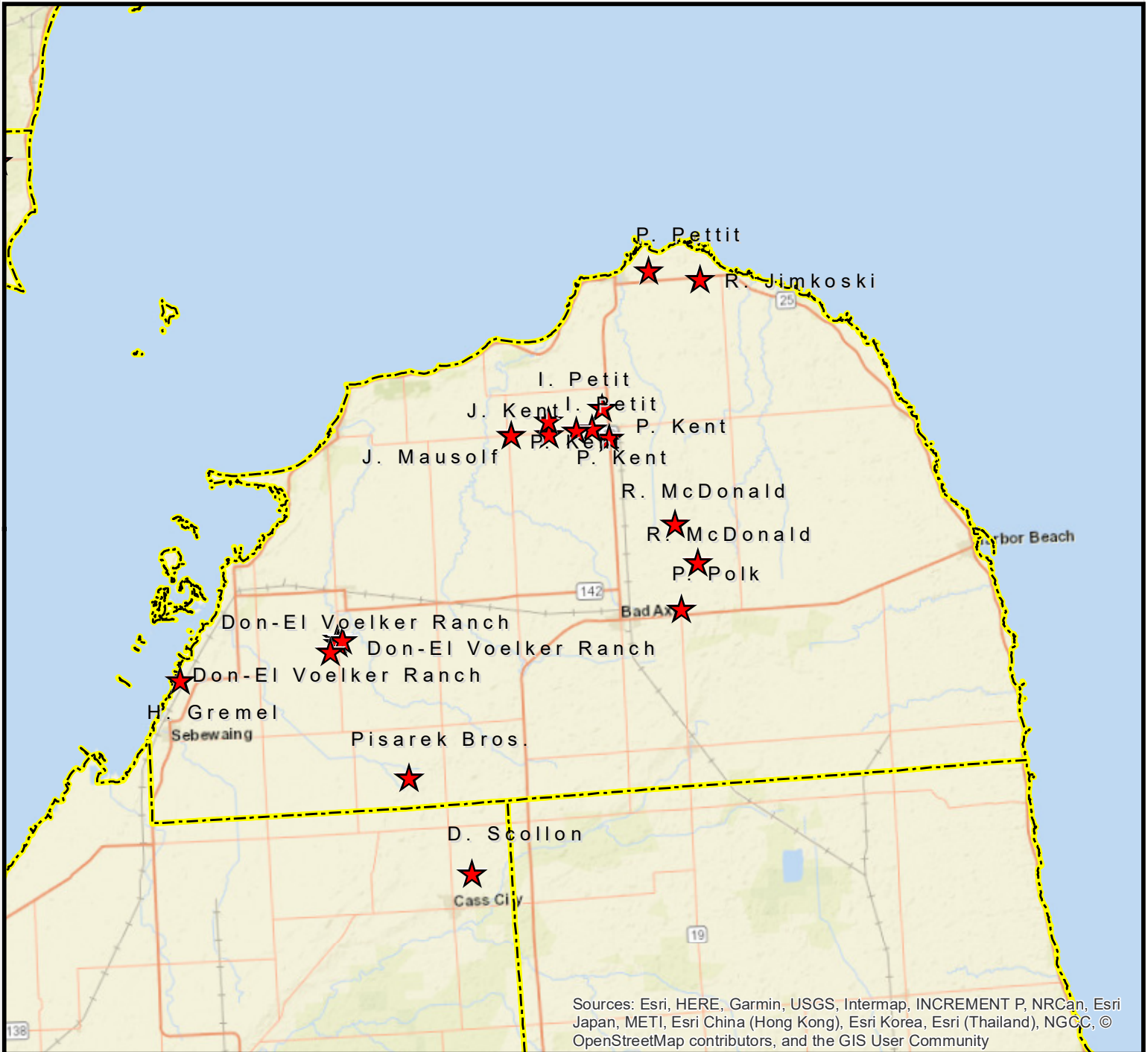


STATE OF MICHIGAN - DEPARTMENT OF NATURAL RESOURCES
HUNTING ACCESS PROGRAM (HAP)



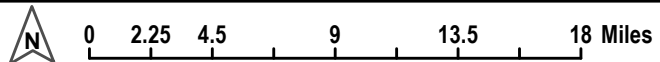
Huron County HAP Cooperator Properties

Revised
09/20/2019



Sources: Esri, HERE, Garmin, USGS, Intermap, INCREMENT P, NRCan, Esri Japan, METI, Esri China (Hong Kong), Esri Korea, Esri (Thailand), NGCC, © OpenStreetMap contributors, and the GIS User Community

Legend: ■ Property Boundary Backdrop is BING base data.
★ Station &/or Parking Location



For more information on the Hunting Access Program (HAP), more maps, or details on other areas, visit the DNR website HAP section www.michigan.gov/hap or scan this QR-block (on the left) with your smartphone or similar device.

HUNTER SAFETY ZONES of 150 yards or 450 feet are enforced at ALL TIMES around all buildings and structures.
Be aware of all property boundaries; Do not trespass onto adjacent lands.