



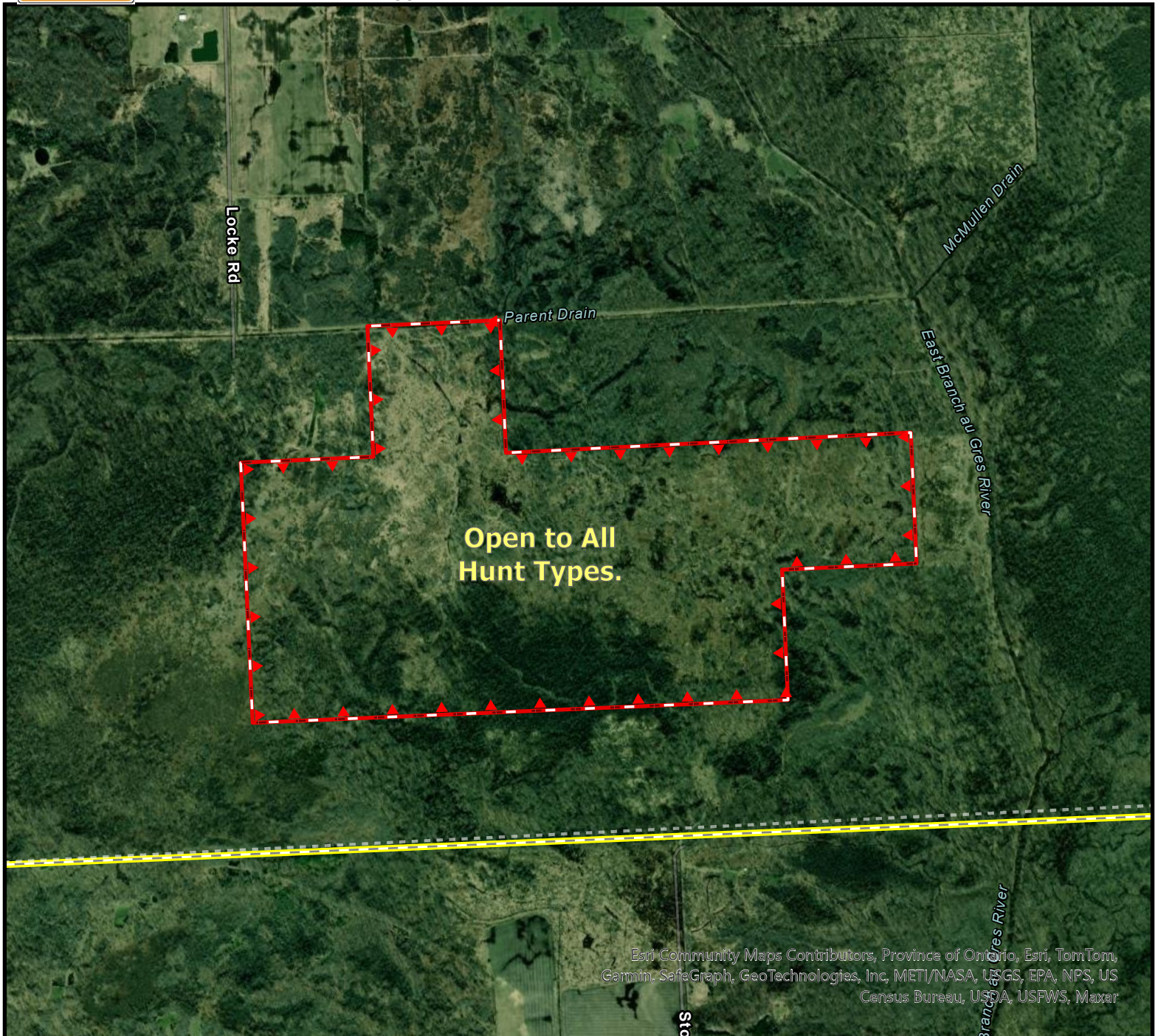
STATE OF MICHIGAN - DEPARTMENT OF NATURAL RESOURCES HUNTING ACCESS PROGRAM (HAP)



Landowner: United States Gypsum
County: Iosco
Size in Acres: 400
Township, Section: Sherman, 35, 36
Farm Headquarters: T21N R6E SEC 35 A-200 E 1/2 EXC NW 1/4 OF NE 1/4 & EXC S 1/2 of SE1/4
Hunt Types Allowed: Open to All Hunt Types.
Service Type: Self-Service check-in station.



Hunters Allowed: 33



Property Boundary Station &/or Parking Location



For more information on the Hunting Access Program (HAP), more maps, or details on other areas, visit the DNR website HAP section or scan this QR-block (on the left) with your smartphone or similar device.

www.michigan.gov/hap



0 0.07 0.15 0.3 0.45 0.6 Miles

0 150 Yards

HUNTER SAFETY ZONES of 150 yards (450 feet or 137.2 meters) are enforced at ALL TIMES around all buildings and structures. Be aware of all property boundaries; Do not trespass onto adjacent lands.