



ERIE STATE GAME AREA

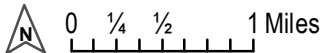
in Monroe County

3,603 acres

Contact:
[Pointe Mouillee SGA](#)
[Headquarters/ DNR Wildlife Office](#)
[37205 Mouillee Road,](#)
[Rockwood, MI 48173](#)
[734-379-9692](#)

State Wildlife/Game Area:

- Huntable Land - General Area
- Parking Lots
- Boat Access
- Marsh



Hunter Safety Zones of 150 yards (450 feet) are enforced around all buildings/structures at all times.

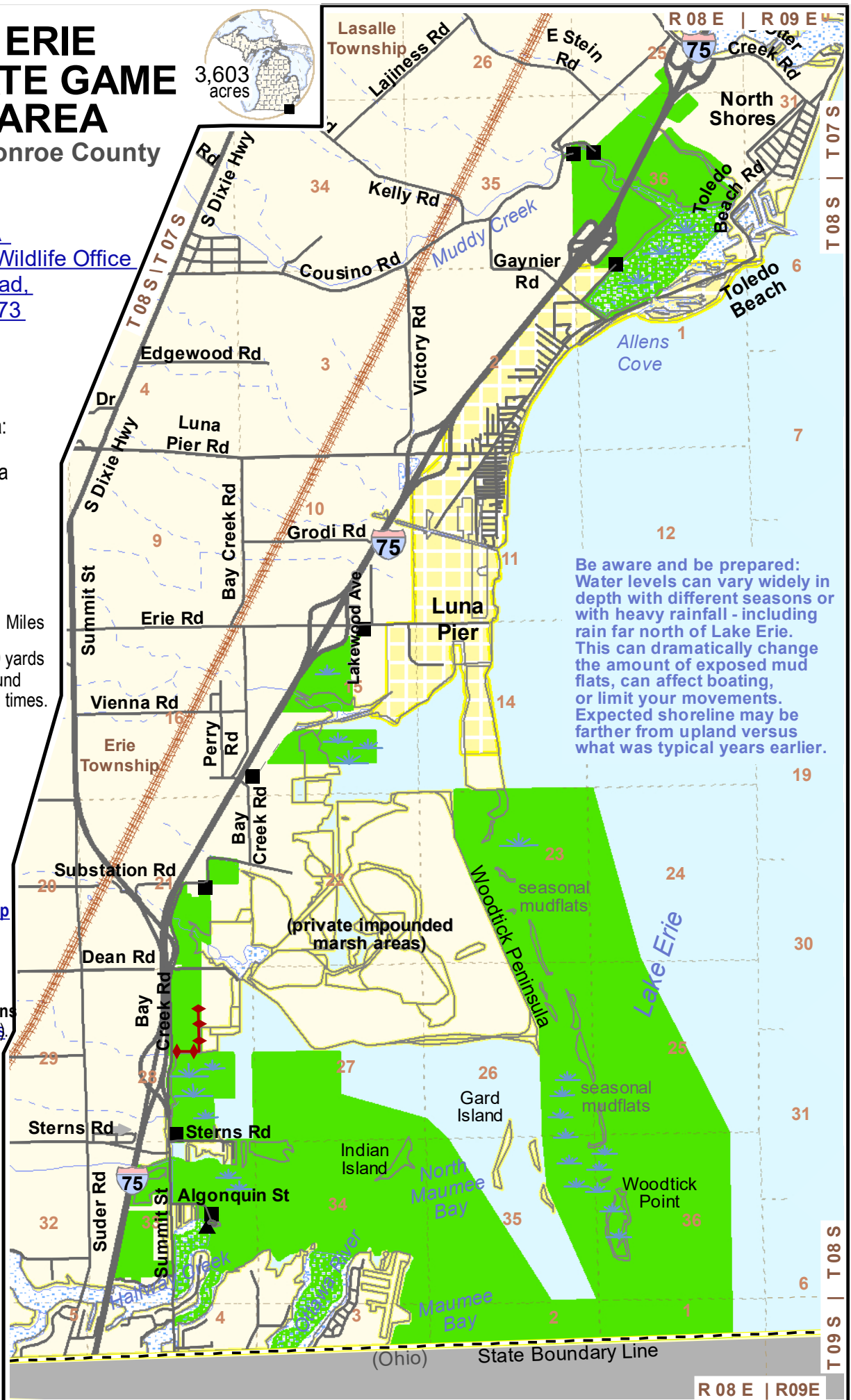
For [more information and help](#) on areas: contact DNR offices, visit the DNR online (www.mi.gov/dnr), click-on or scan the QR-block (below). **Complete rules and regulations** are online (www.mi.gov/dnrlaws). This geospatial PDF has embedded GPS coordinates and links.



Hunter Monies Help Make This Area Possible



Map rev.04/02/2019
(-DNR-Wildlife/M.Strong)



Be aware and be prepared: Water levels can vary widely in depth with different seasons or with heavy rainfall - including rain far north of Lake Erie. This can dramatically change the amount of exposed mud flats, can affect boating, or limit your movements. Expected shoreline may be farther from upland versus what was typical years earlier.

(private impounded marsh areas)

(Ohio) State Boundary Line

R 08 E | R09E