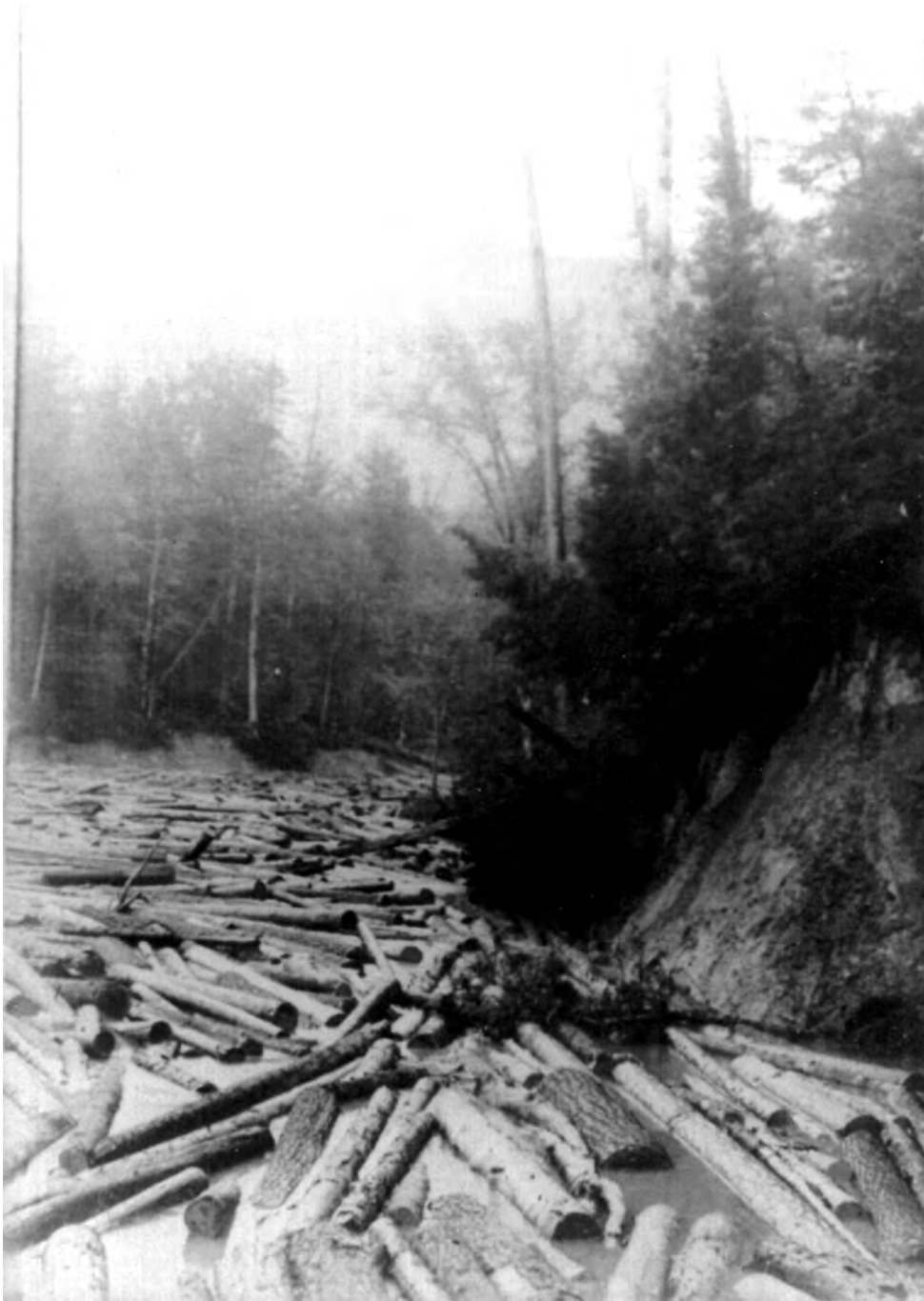


Appendix II

The following laser copies of photographs were made from originals that are stored in the Manistee County Historical Museum, 425 River Street, Manistee, Michigan 49660. Steve Harold, Curator. 616-723-5531. Photographs 2, 3, and 5 were taken by Leonard Short, Druggist and Photographer of Manistee in 1903 or 1904 while on a canoe trip from the present day site of Tippy Dam to the City of Manistee. Photographs 1 and 4 were selected from hundreds in the archives at the museum by anonymous photographers.



Photograph #1

A large log-jam on the Manistee River. These were major causes of bank erosion.



Photograph #2

Ongoing bank erosion created by turn of the century logging practices. Note only second growth cove adjacent to the nearly vertical river bank.



Photograph #3

A log sluice located at Udell Hills Rollway in Manistee County, T22N, R15W, Section 36, that is at the mouth of Pine Creek. This method of delivering the logs to the river was more commonly used on the west coast. White rollways, as depicted on the cover photograph, were typical of Michigan's loggers.



Photograph #4

A “cut-off”, areas where the river made a large U-shaped bend. The loggers, who systematically removed all the woody debris from the stream channel to facilitate floating logs to market, cut through these bends. This straightened the river and eliminated bends where log jams typically occurred. This photograph is thought to be at the present day site of the US Forest Service Peterson Bridge (M-37) campground on the Pine River, formerly the South Branch of the Manistee River.



Photograph #5

The “wannigans”, or floating cook shacks. These followed the lumberjacks down the river during the log drives.

Appendix III

Federal Energy Regulatory Commission settlement agreement between Consumers Power Company, Michigan Department of Natural Resources, Michigan State Historic Preservation Officer, United States Department of Interior—Fish and Wildlife Service, United States Department of Interior—National Parks Service, and United States Department of Agriculture—Forest Service.