

Thunder Bay River Assessment

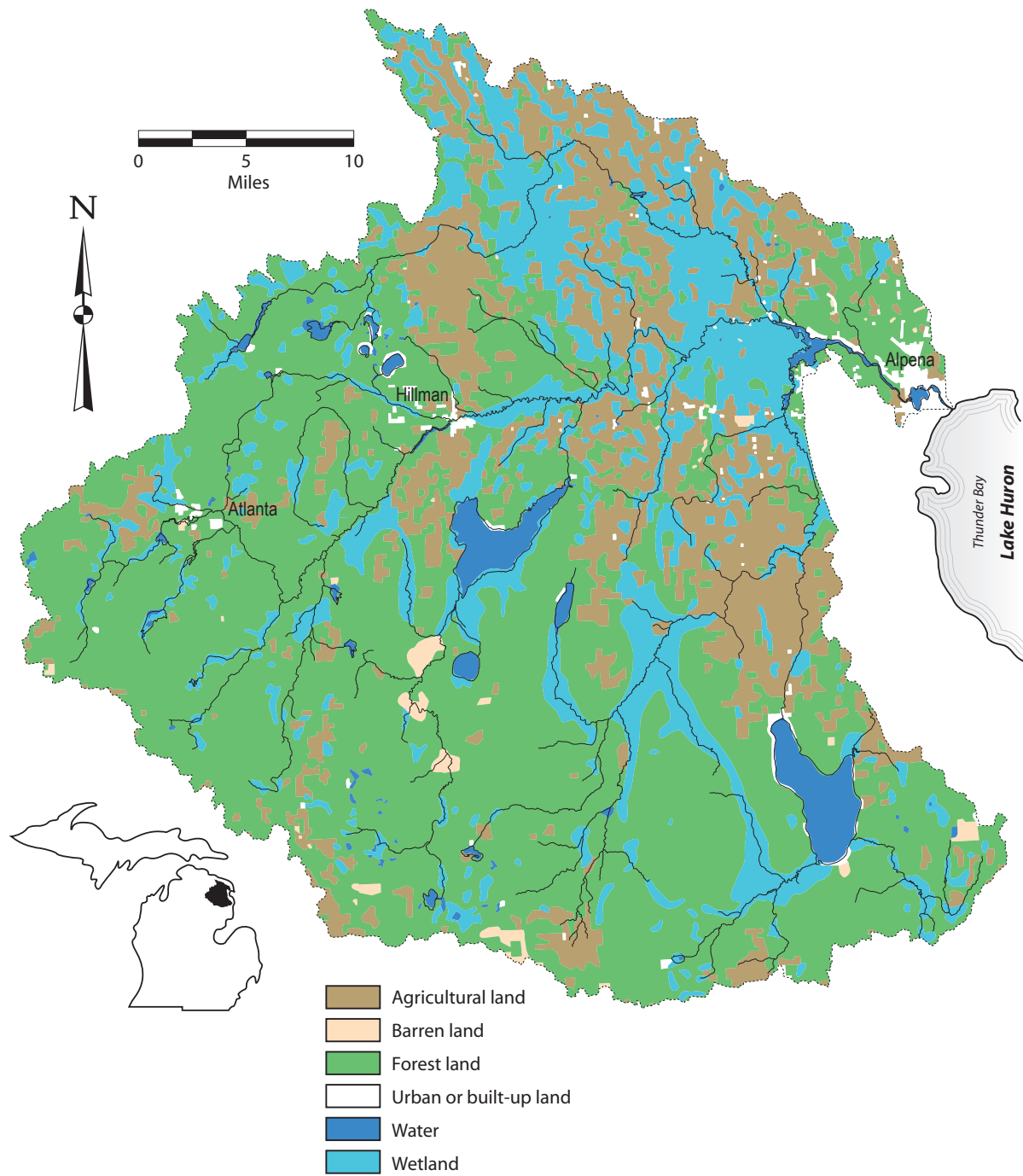


Figure 17.–Land use and land cover in the Thunder Bay River watershed in 1983 (United States Geological Survey 1994).

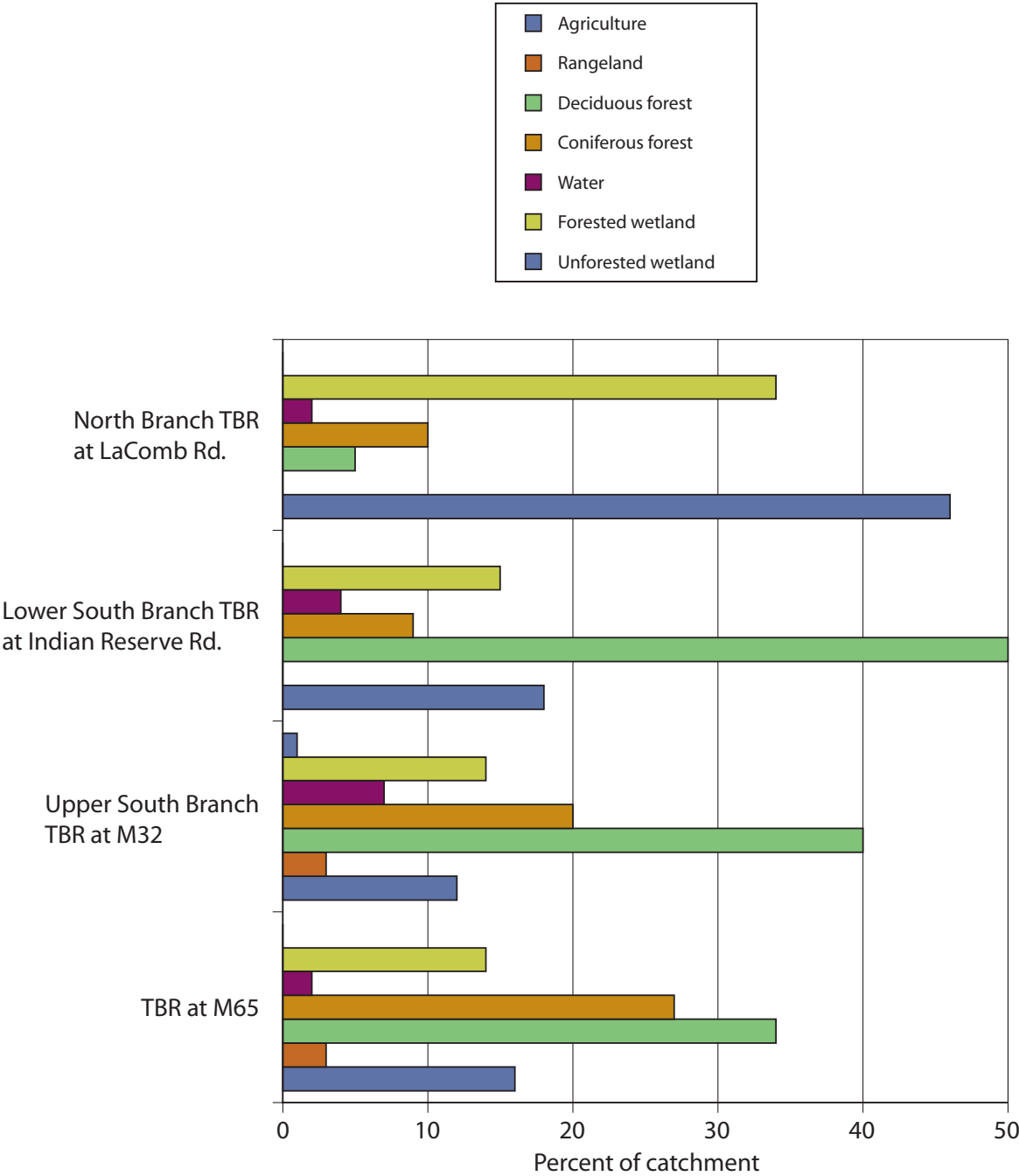


Figure 18.—Percent of different land use types for segments of the mainstem and tributaries of the Thunder Bay River. Data from Michigan Department of Natural Resources, Fisheries Division records.

Thunder Bay River Assessment



Figure 19.—Oil and gas wells in the Thunder Bay River watershed (Michigan Department of Environmental Quality, Geological Survey Division and Michigan Department of Natural Resources, Land and Mineral Services Division 2002).

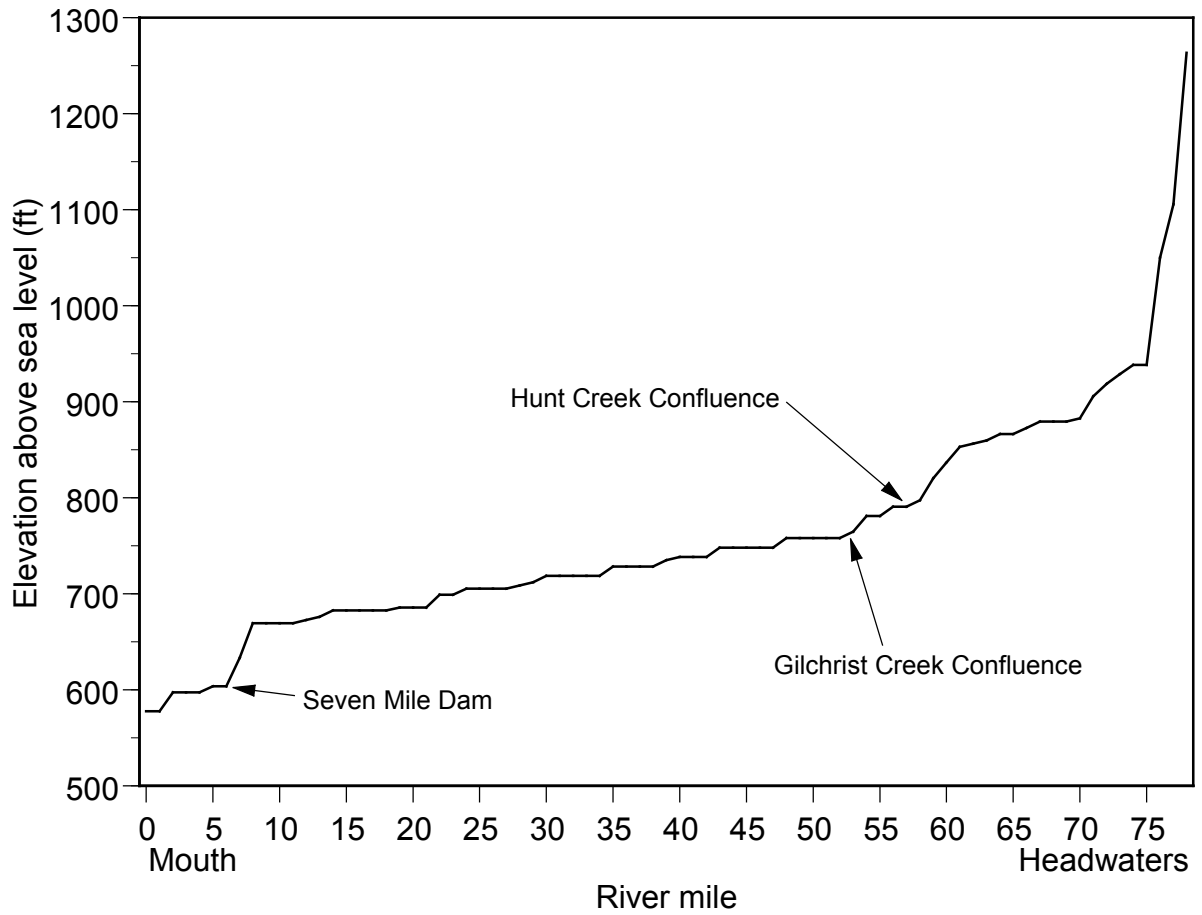


Figure 20.—Elevation changes by river mile along the mainstem Thunder Bay River from its headwaters above McCormick Lake to its mouth (Michigan Department of Natural Resources, unpublished data).

Thunder Bay River Assessment

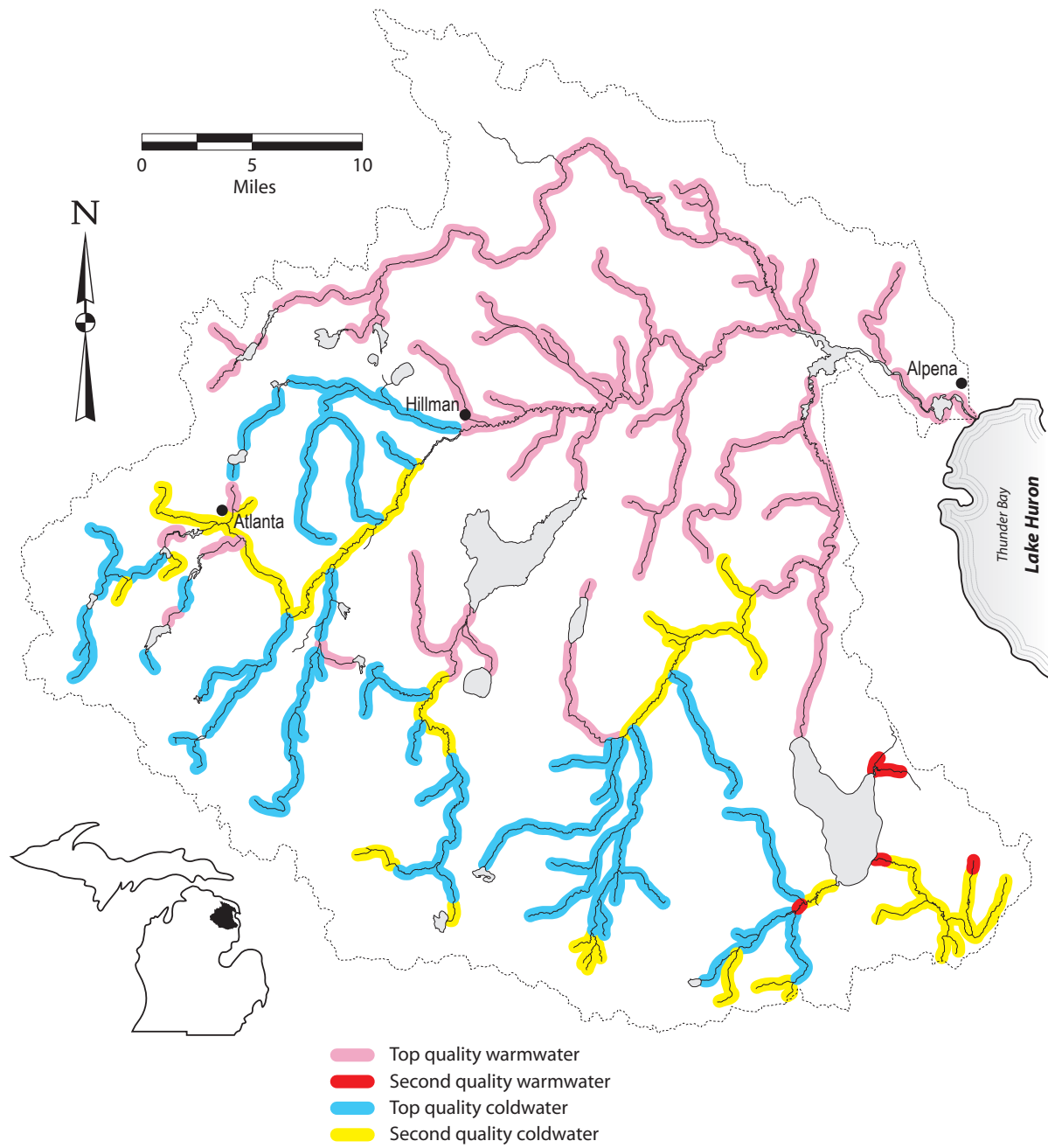


Figure 21.—Quality of water type in the Thunder Bay River watershed (Michigan Department of Natural Resources, Fisheries Division, unpublished data).

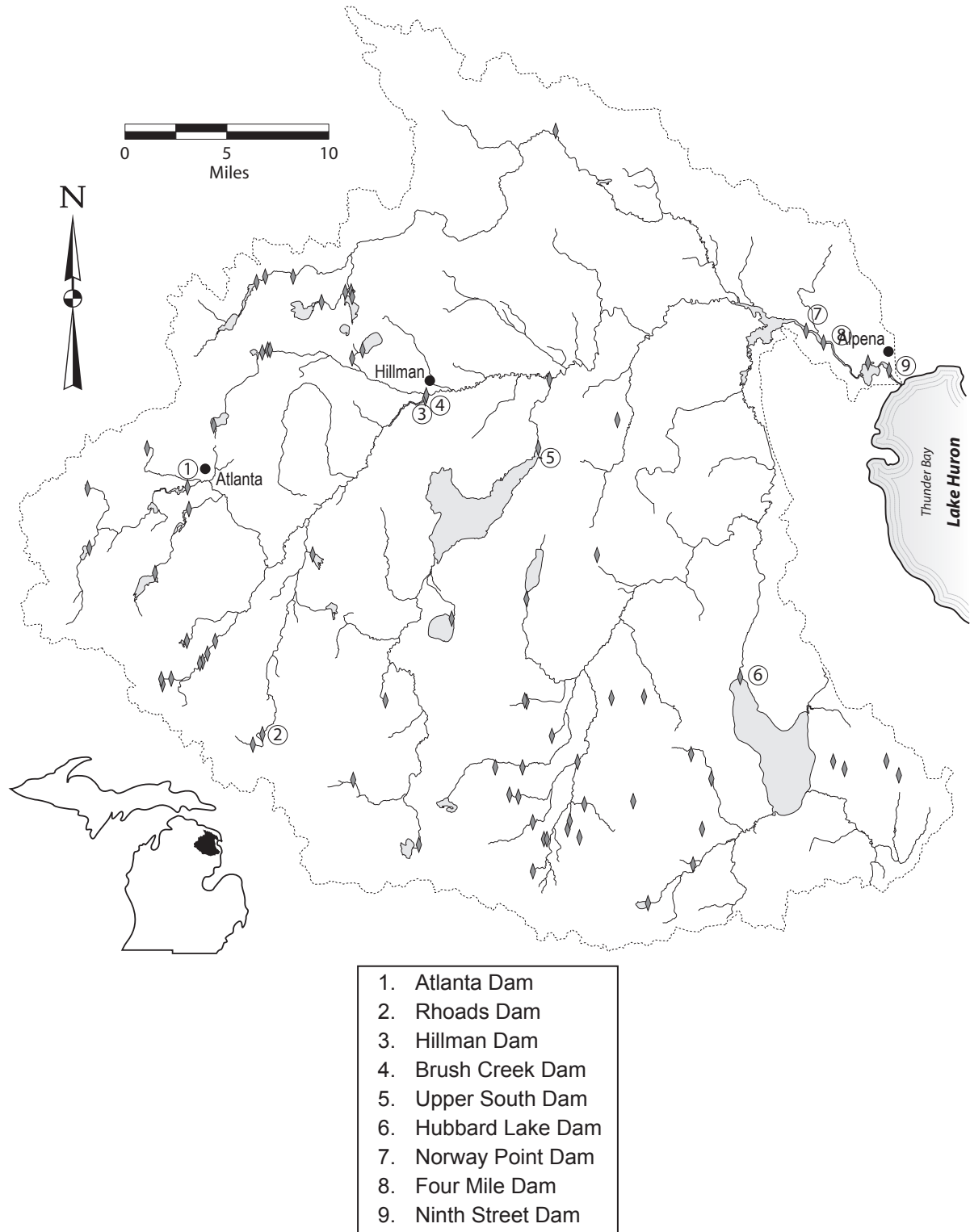


Figure 22.—Locations of dams in the Thunder Bay River watershed. Principal dams are labeled numerically (Michigan Department of Environmental Quality, Land and Water Management Division, unpublished data).

Thunder Bay River Assessment

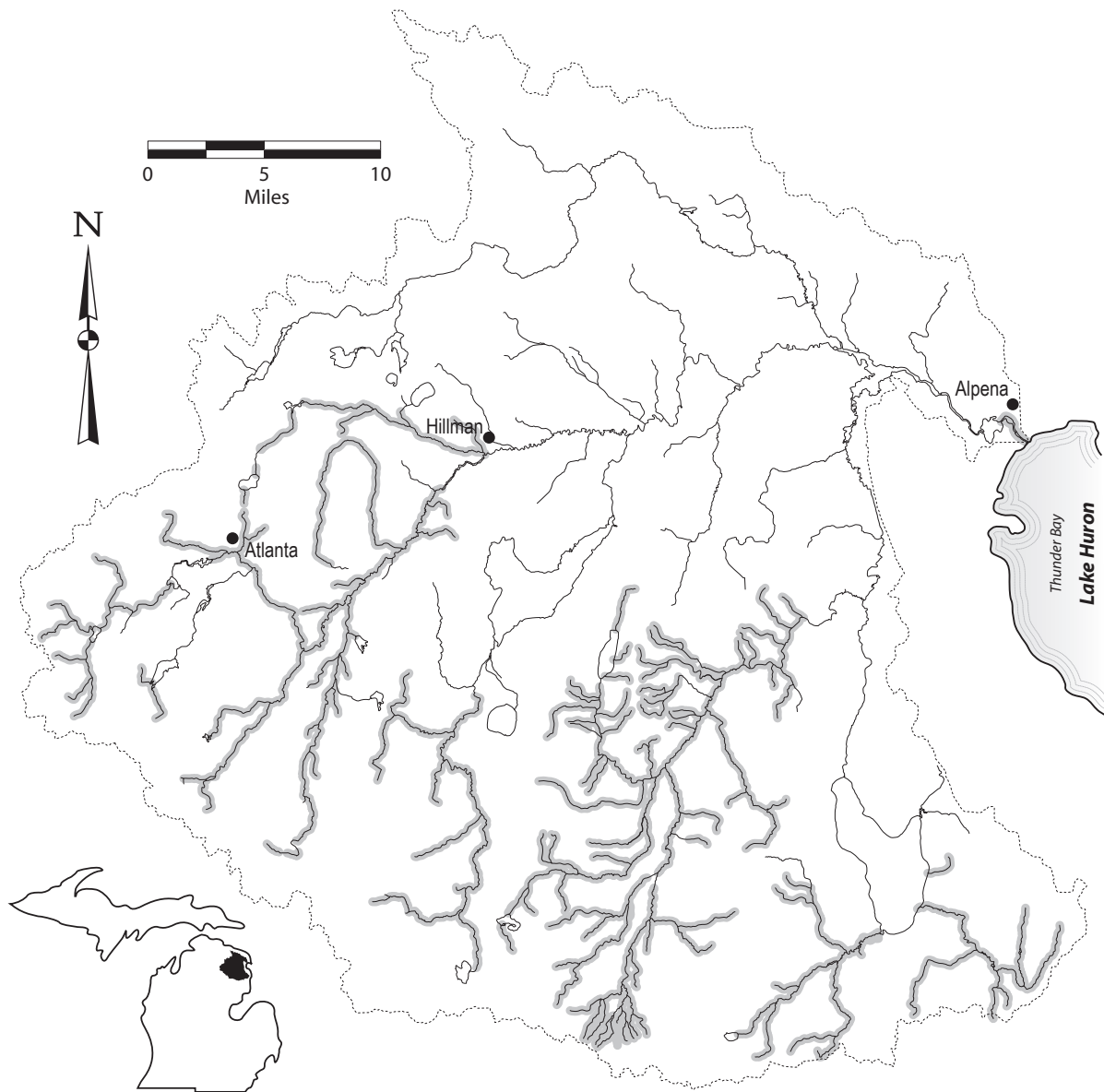


Figure 23.—Designated trout streams of the Thunder Bay River watershed. Designations are listed in Michigan Department of Natural Resources-DFI 101, designated trout streams. Map is from Michigan Department of Natural Resources Digital Water Atlas.

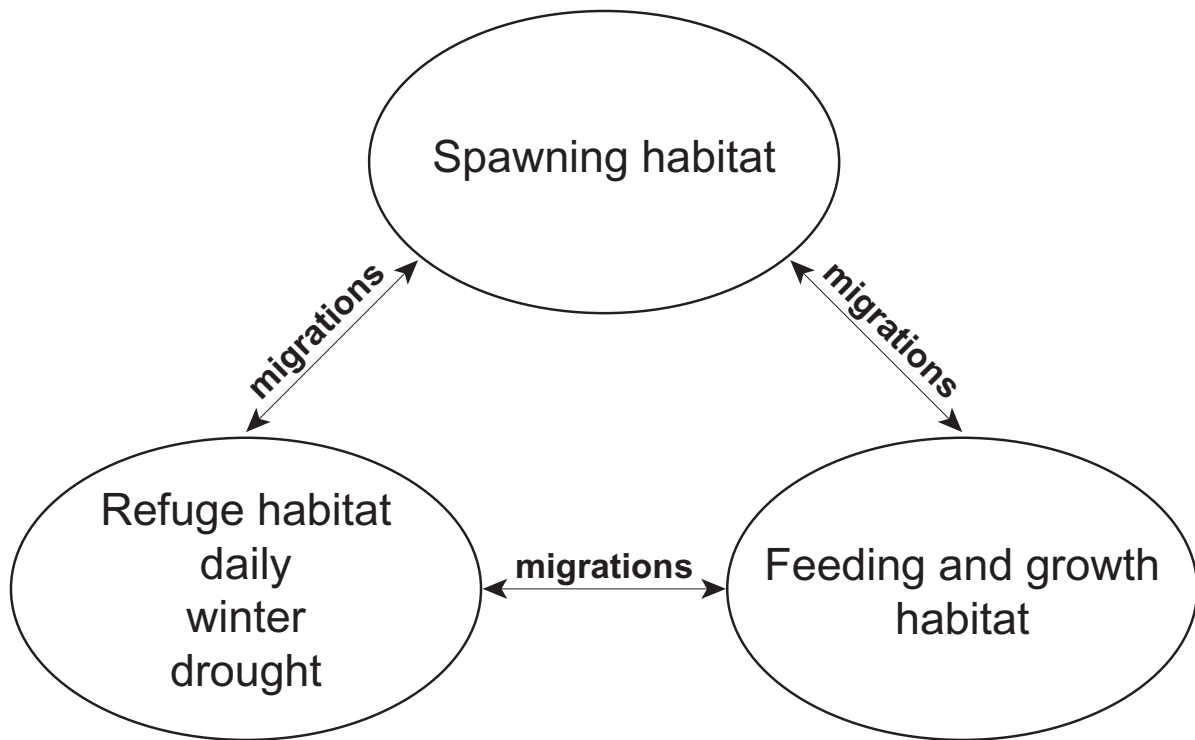


Figure 24.–The basic life cycle of stream fishes in regard to habitat use (modified from Schlosser 1991).

Thunder Bay River Assessment

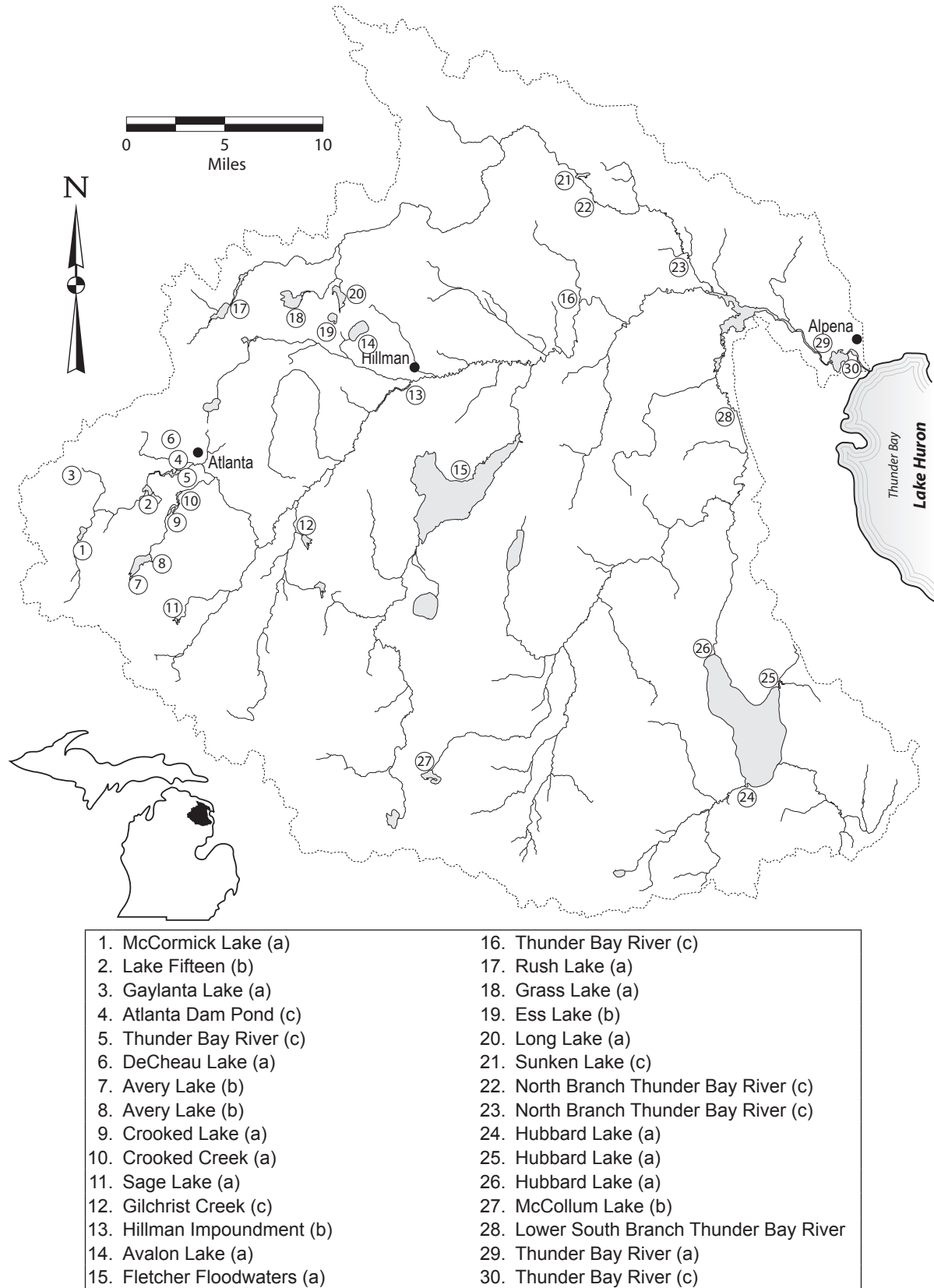


Figure 25.—Designated and non-designated public access sites in the Thunder Bay River watershed. Access sites are categorized as: (a) designated public access site; (b) designated public access site with campground; (c) other established water access.