

### Paint Creek

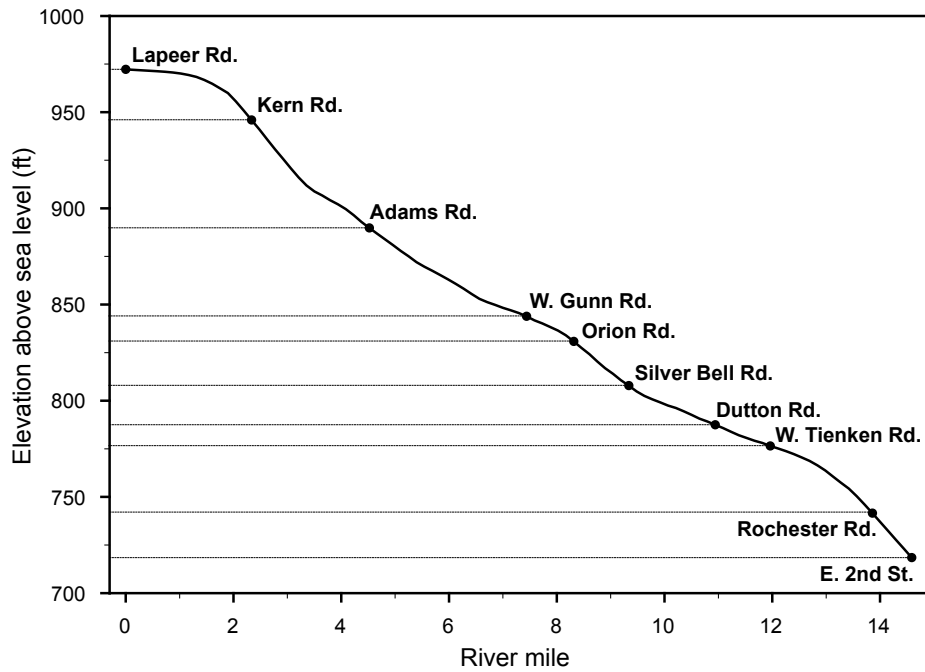
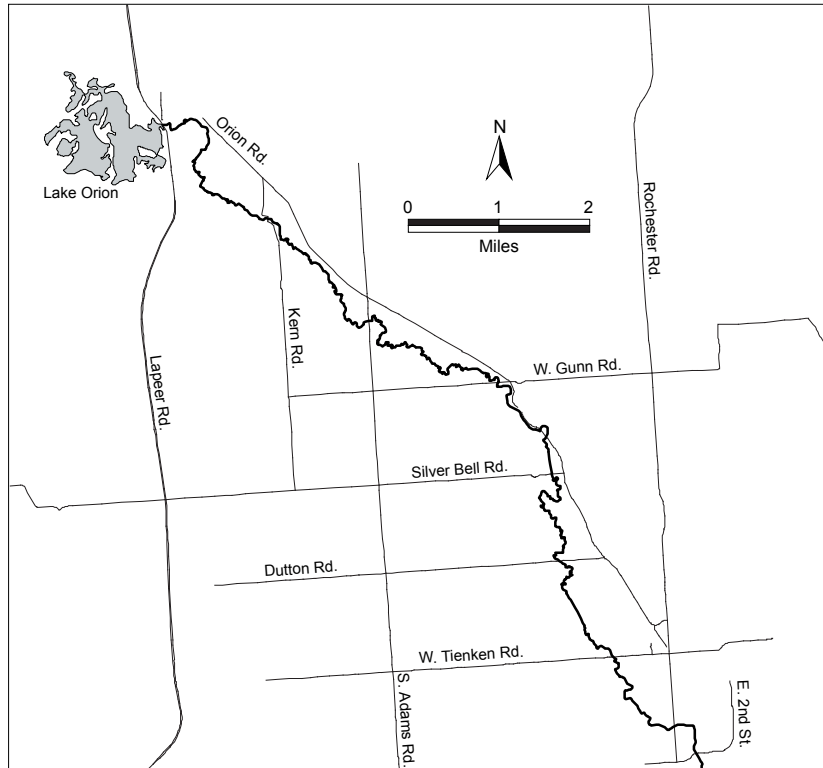


Figure 45.—Map of Paint Creek showing Lake Orion and major road crossings for geographic reference. The outer rectangle covers 48,987 acres and the river is 15.0 miles. River flow is southeast. Lower graph shows elevation change along Paint Creek with road crossings identified.

### Paint Creek

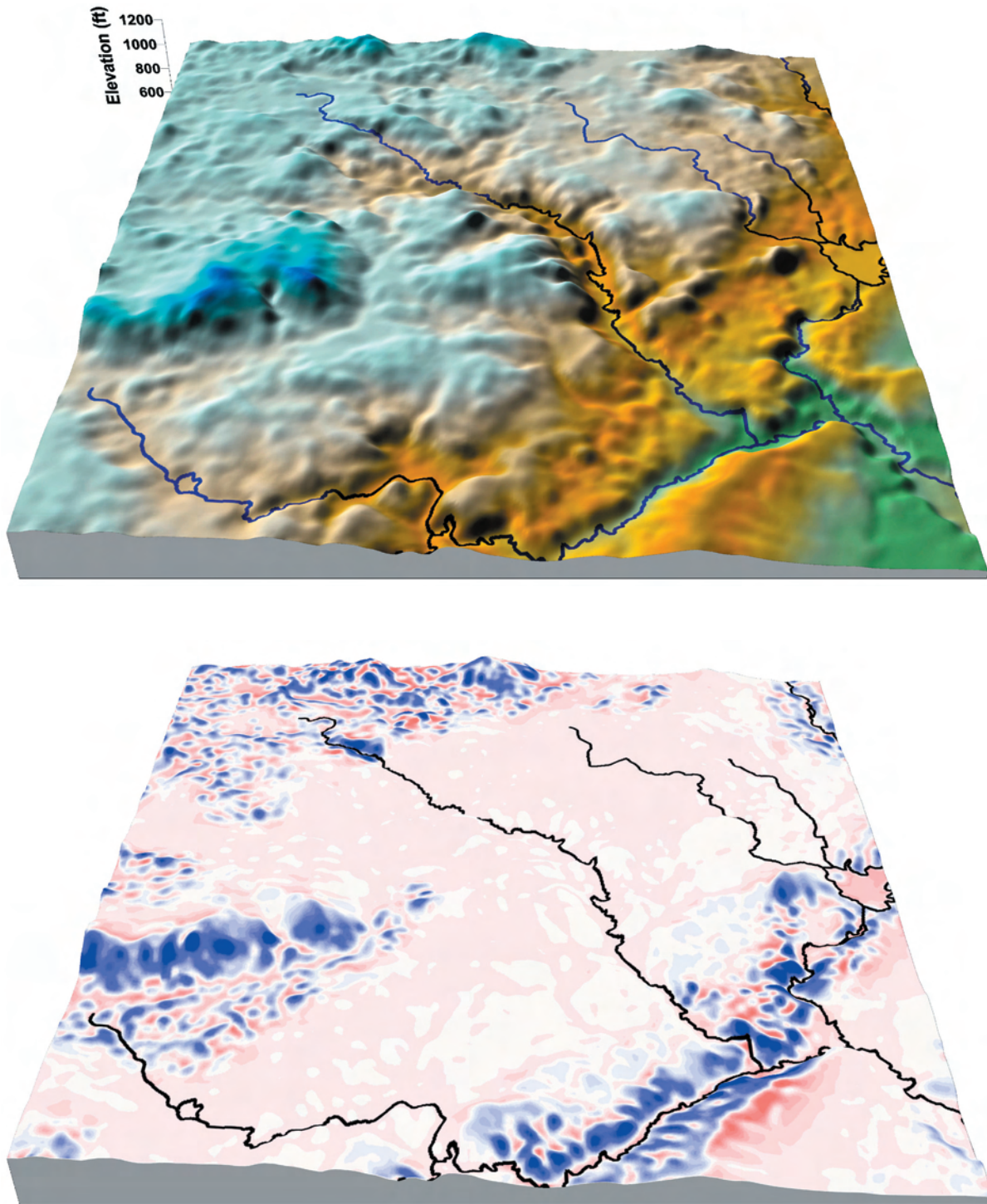


Figure 46.—Surface map (upper figure) shows general land surface features adjacent to Paint Creek within same area as previous figure. River flow is in an easterly direction. The lower map shows potential groundwater flux (Darcy image) draped over the surface. Red areas are considered to be discharging to surface water while blue areas are groundwater accumulation zones. Elevation scale is the same for both maps.

## Stony Creek

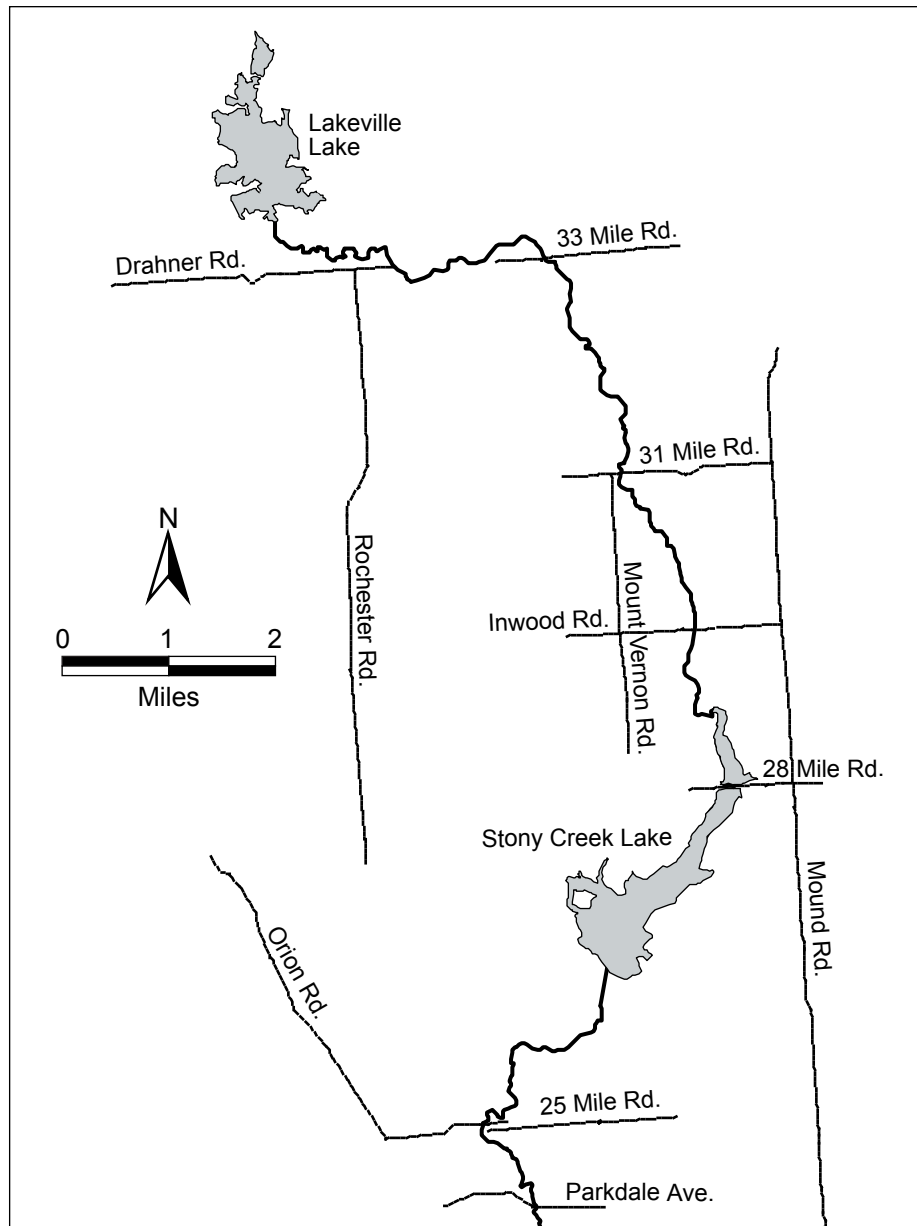


Figure 47.—Map of Stony Creek showing large impoundments and major road crossings for geographic reference. The outer rectangle covers 63,293 acres and the river is 16.7 miles. River flow is southeast.

### Stony Creek

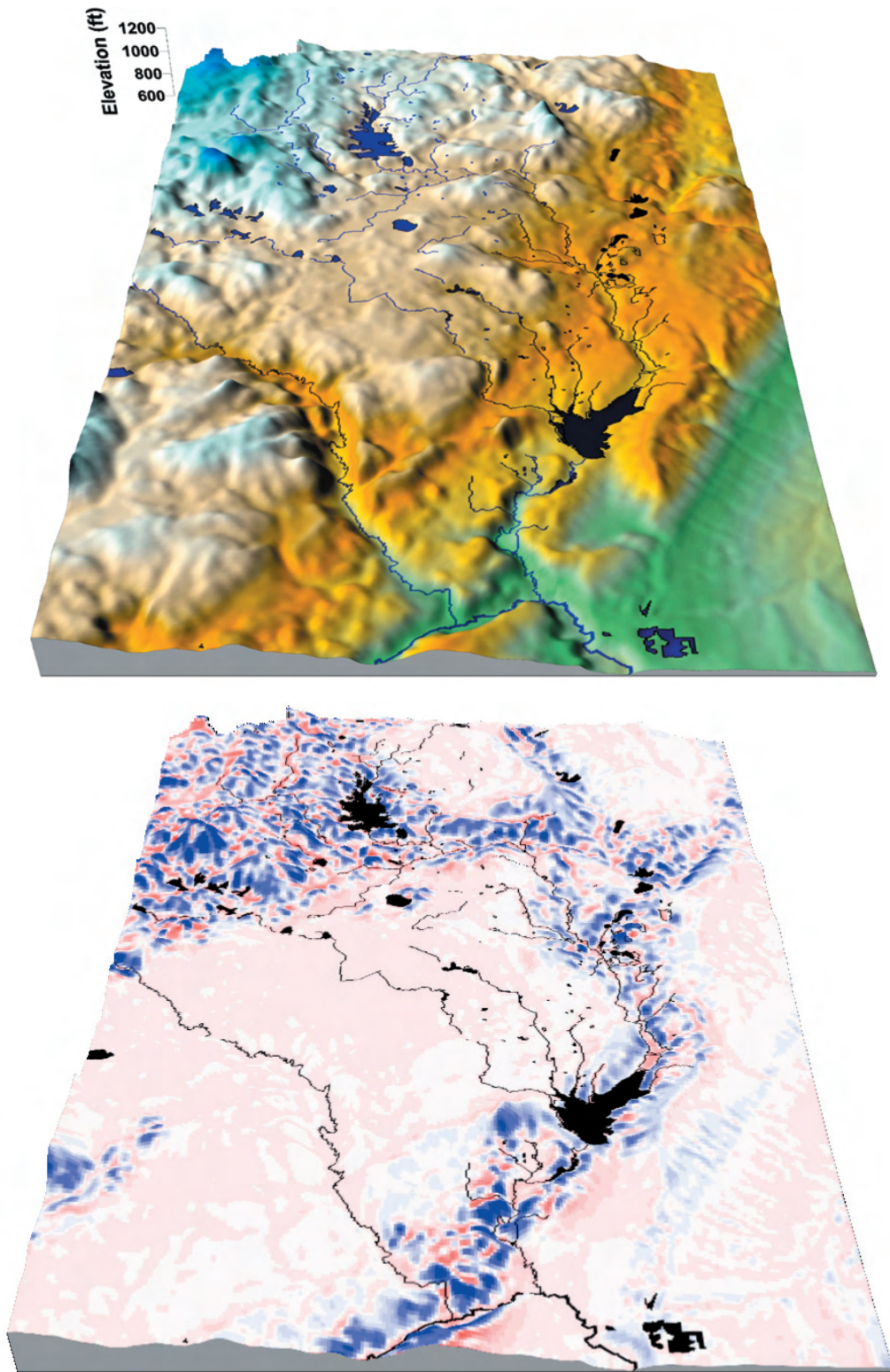


Figure 48.—Surface map (upper figure) shows general land surface features adjacent to Stony Creek within same area as previous figure. River flow is in a southerly direction. The lower map shows potential groundwater flux (Darcy image) draped over the surface. Red areas are considered to be discharging to surface water while blue areas are groundwater accumulation zones. Elevation scale is the same for both maps.

Lower Segment

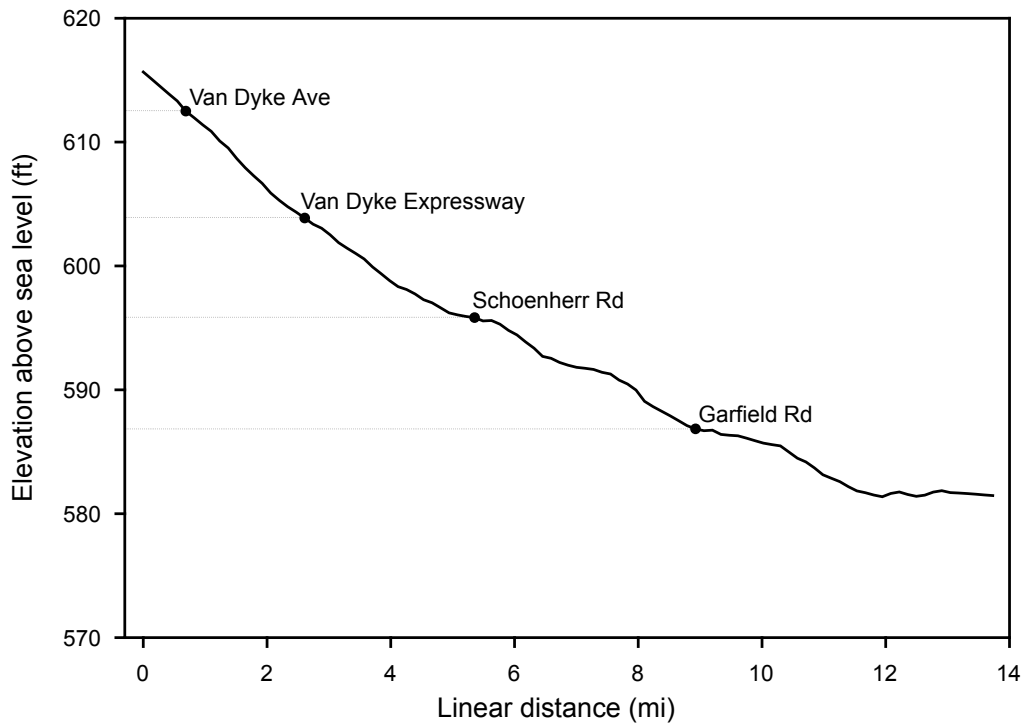
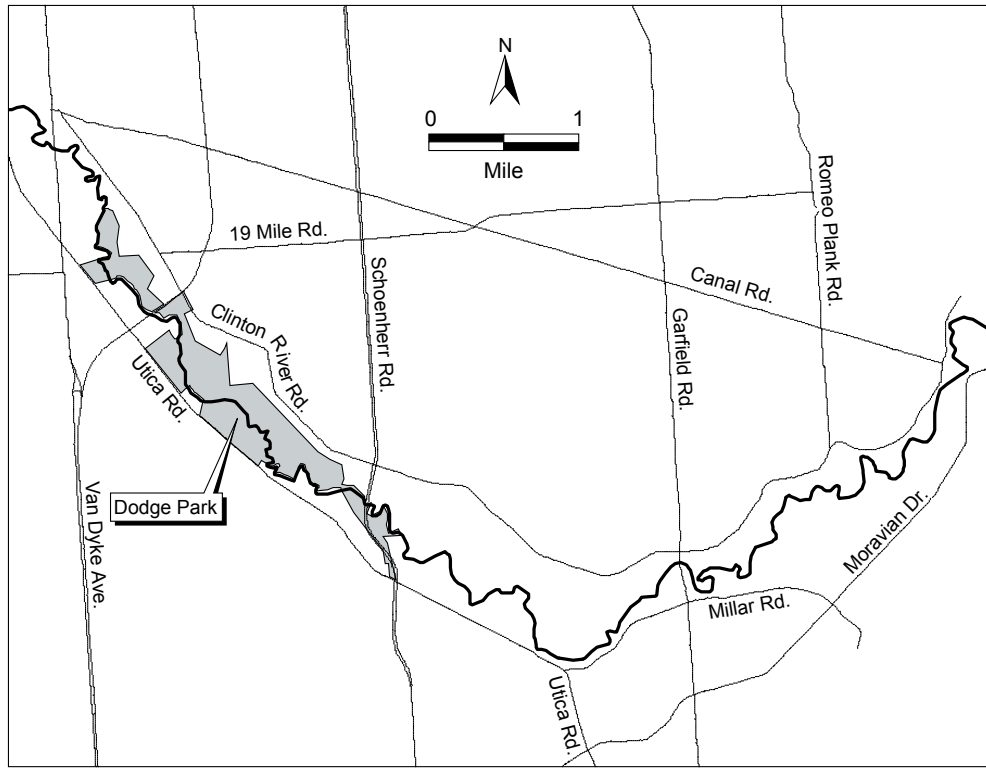


Figure 49.—Lower Segment of the Clinton River mainstem showing Dodge Park in Sterling Heights and major road crossings for geographic reference. The outer rectangle covers 21,835 acres and the river segment is 13.7 miles. River flow is in an easterly direction. Lower graph shows elevation change along this river section with road crossings identified.

### Lower Segment

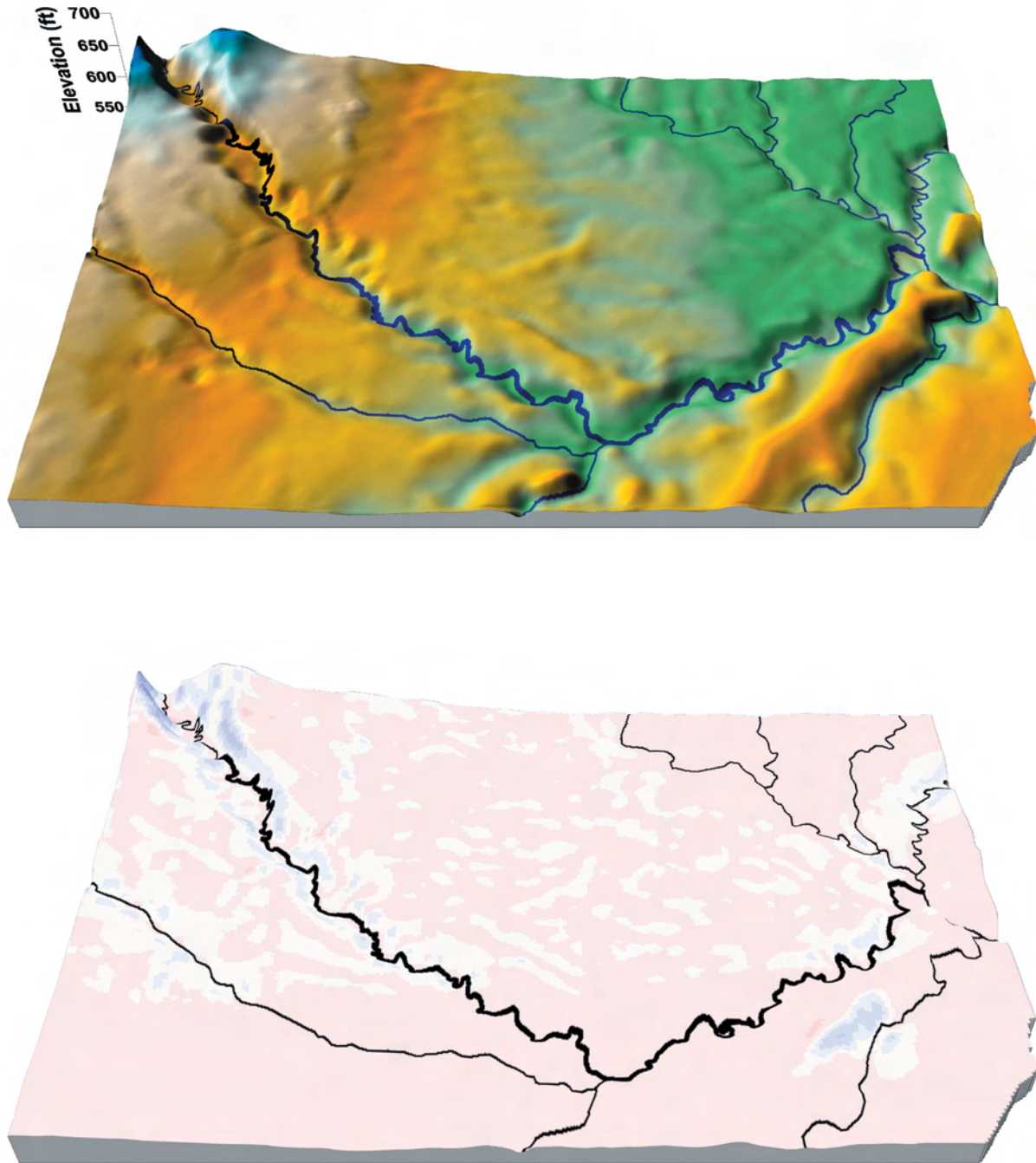


Figure 50.—Surface map (upper figure) shows general land surface features of Lower Segment of the Clinton River mainstem within same area as previous figure. River flow is in an easterly direction. The lower map shows potential groundwater flux (Darcy image) draped over the surface. Red areas are considered to be discharging to surface water while blue areas are groundwater accumulation zones. Elevation scale is the same for both maps.

Mouth Segment

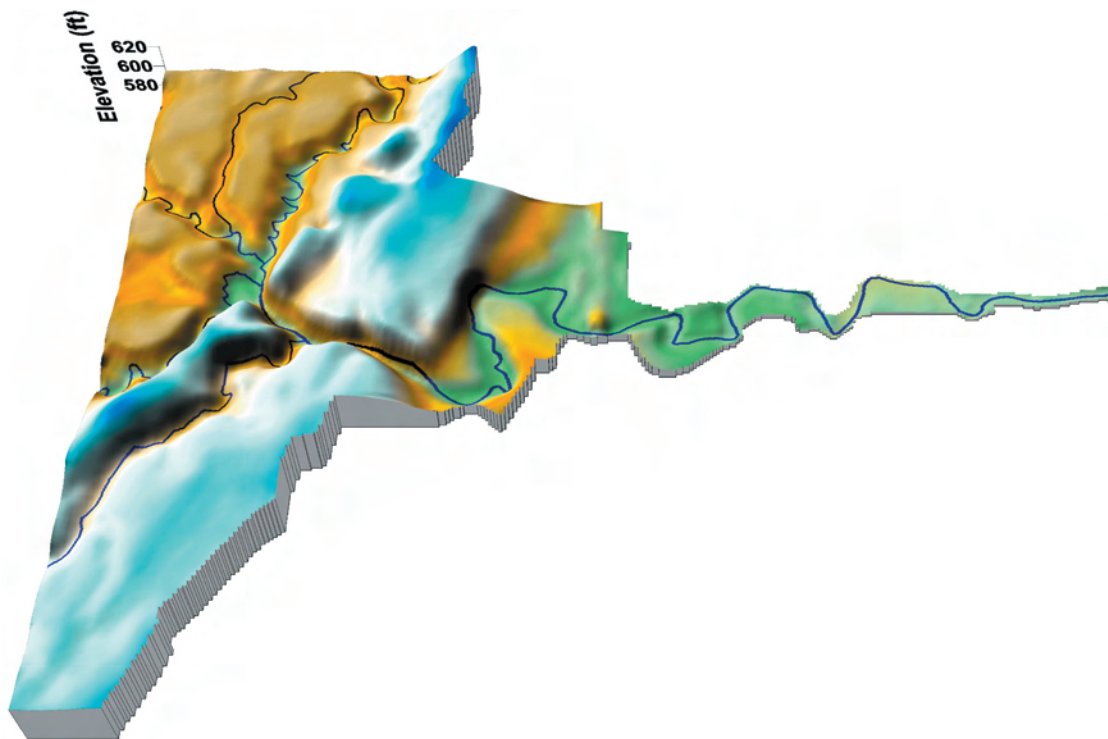
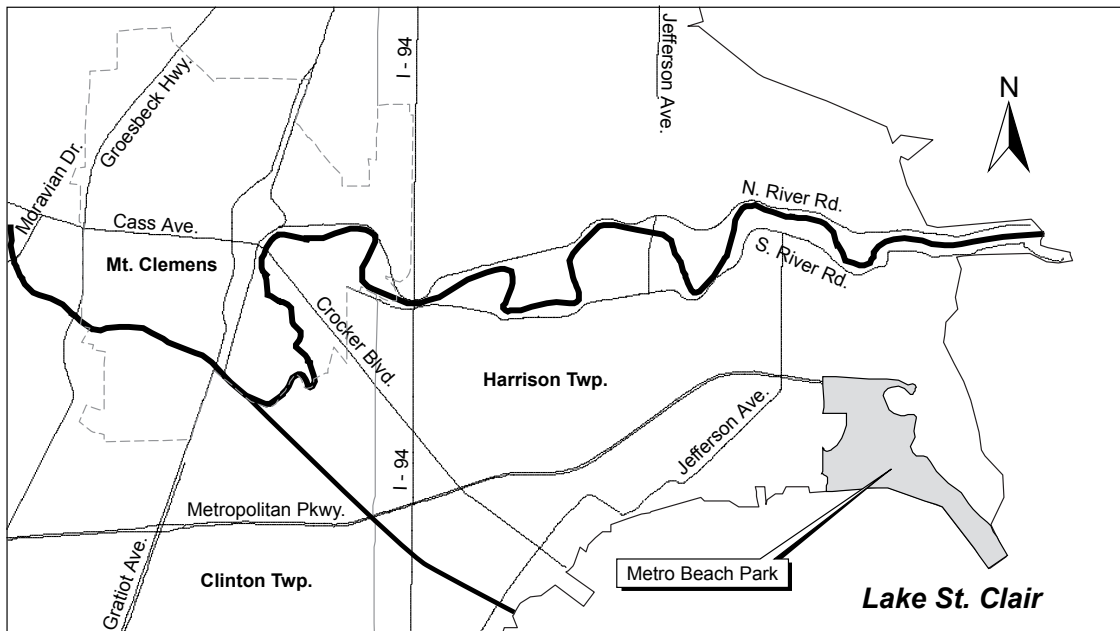


Figure 51.—The Mouth Segment of the Clinton River mainstem showing Huron-Clinton Metropark in Harrison Township and major road crossings for geographic reference. The outer rectangle covers 19,020 acres and the river segment is 11.1 miles. River flow is in an easterly direction. The lower map shows general land surface features of section 5 clipped to the watershed boundary on the east.

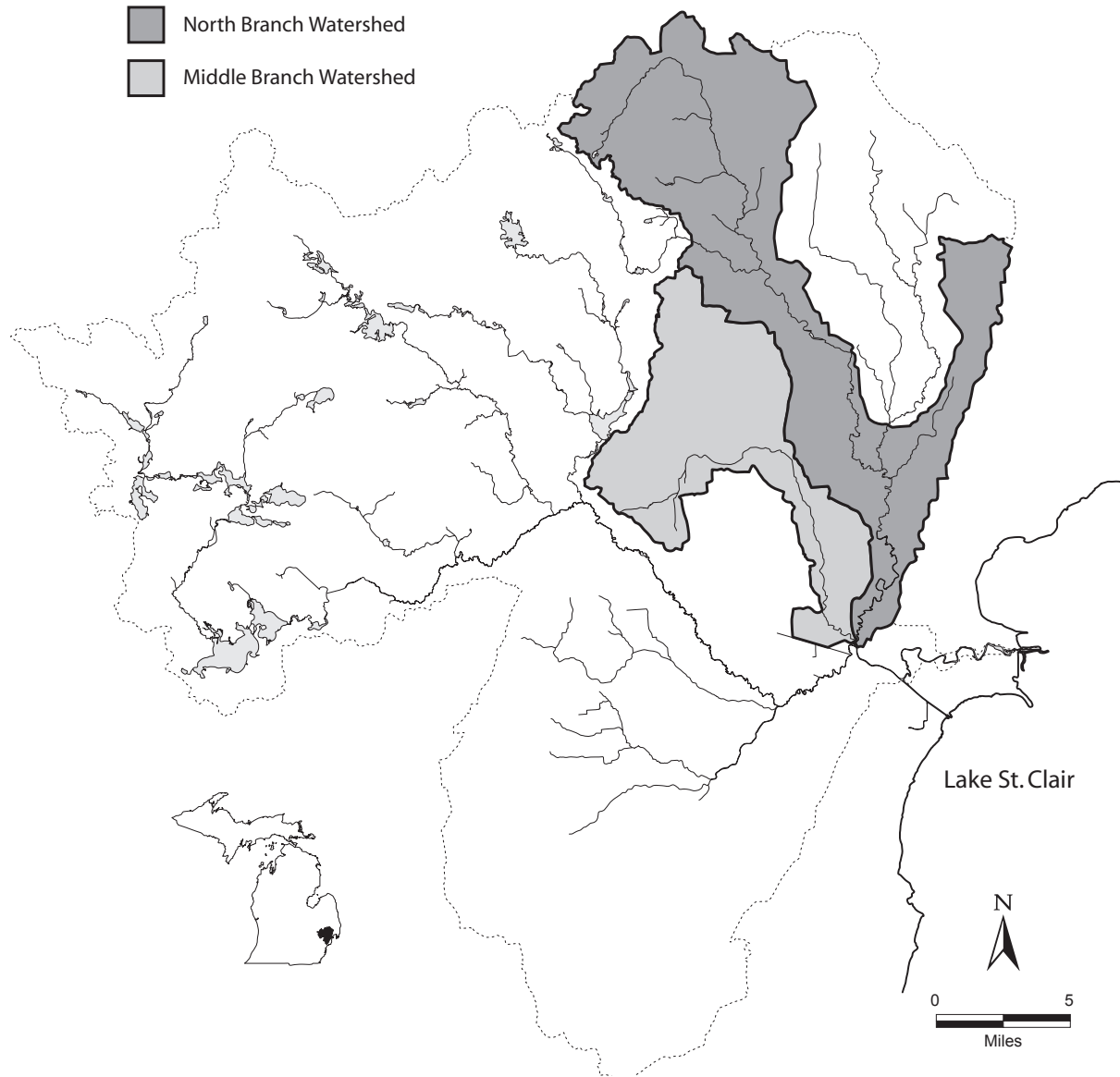


Figure 52.—Watershed for the Middle and North branches of the Clinton River. River flow is in a southerly direction.



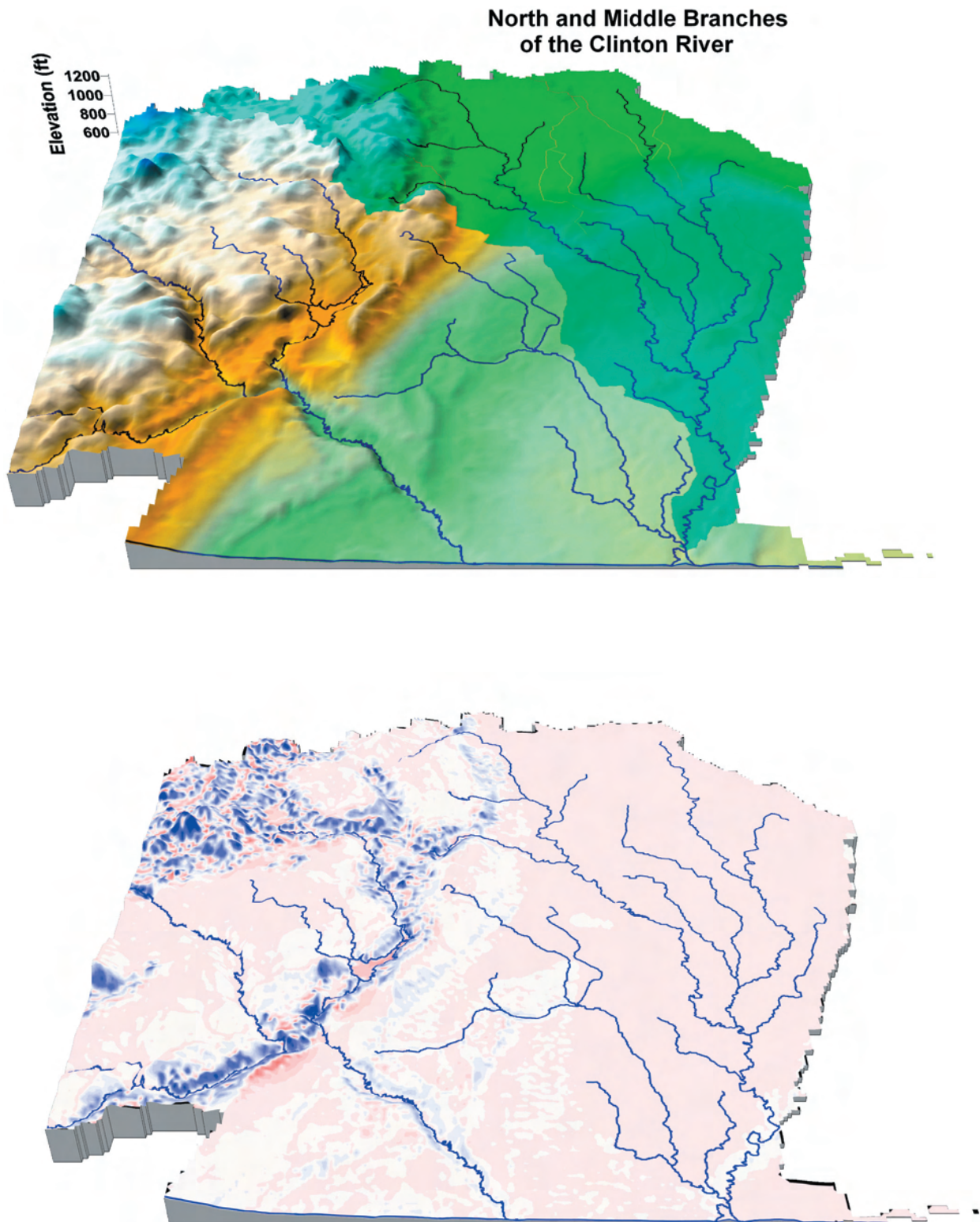


Figure 53.—Surface map (upper figure) shows general land surface features adjacent to Middle and North branches of the Clinton River watershed. River flow is in an southerly direction. The lower map shows potential groundwater flux (Darcy image) draped over the surface. Red areas are considered to be discharging to surface water while blue areas are groundwater accumulation zones.