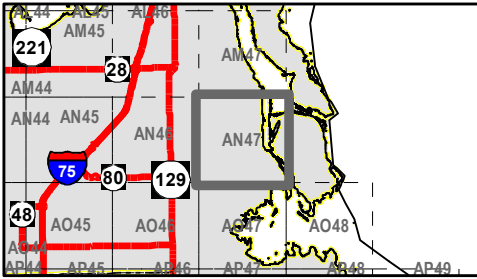




Mi-HUNT Cover Types

MAP ID: AN47



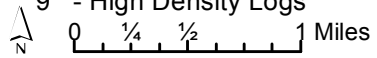
Cover Types

Rev.: 04/16/2018

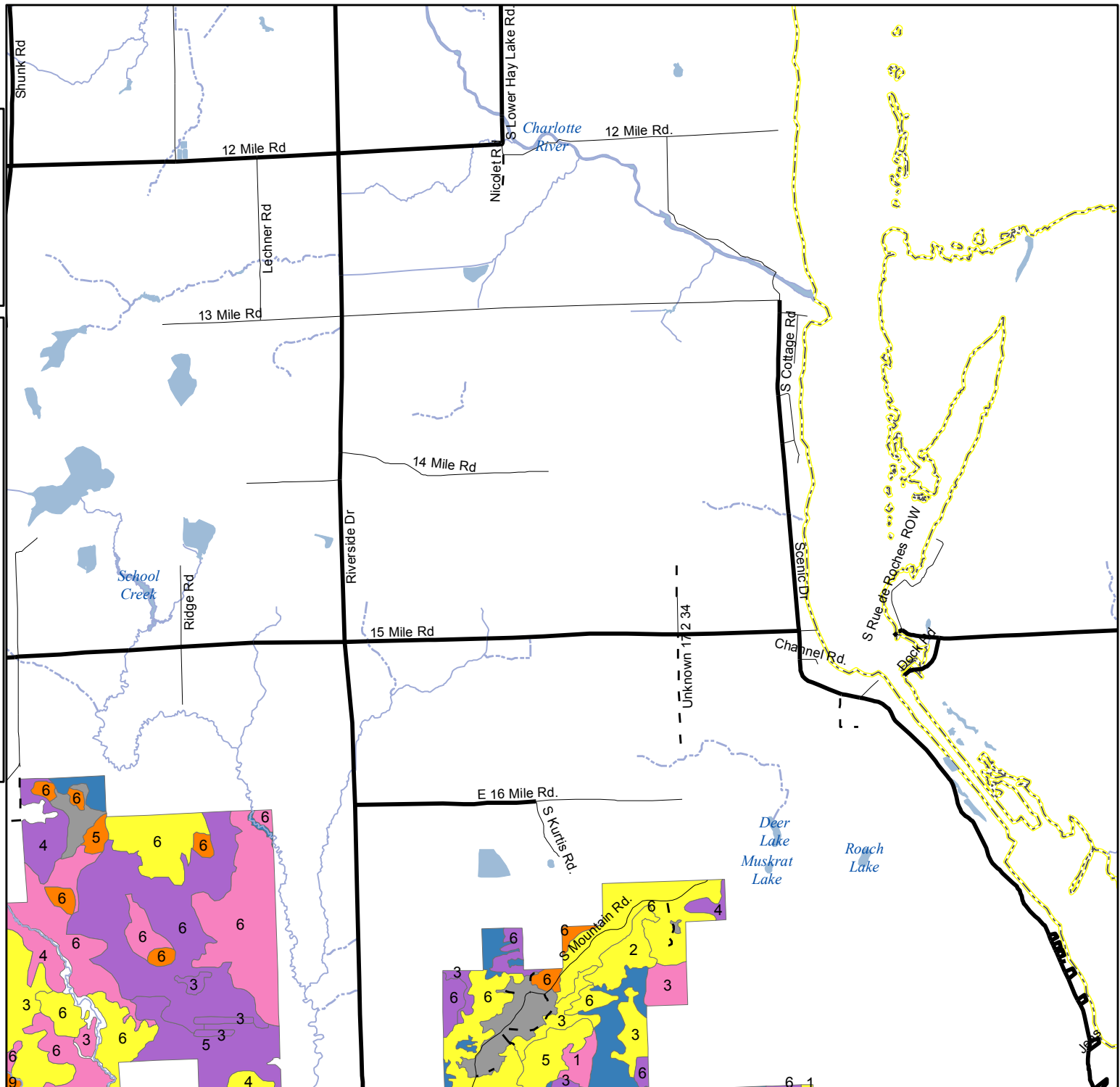
- Aspen
- Oak
- Other Upland Deciduous
- Upland Conifer
- Grass/Shrubs/Crops
- Wetlands/Bogs
- Lowland Conifers
- Lowland Deciduous
- Rock/Sand/Soil

Tree Size Density Key

- 1 - Low Density Saplings
- 2 - Medium Density Saplings
- 3 - High Density Saplings
- 4 - Low Density Poles
- 5 - Medium Density Poles
- 6 - High Density Poles
- 7 - Low Density Logs
- 8 - Medium Density Logs
- 9 - High Density Logs



User Note: This is a cover type map derived from information provided by the Michigan Department of Natural Resources (DNR) and the US Forest Service. It is not intended to show areas open or closed to hunting. It is intended to show hunters the types of vegetation they may encounter when afield. It is the responsibility of users of this map to be aware of all the rules and regulations relevant to their hunting activities and their hunting locations. The DNR does not warrant or make any representations about the accuracy of the content on this map.



Visit www.mi.gov/mihunt to download this map and learn more about publicly accessible hunting lands in Michigan.