

2022 Ludington State Park VISITOR

Produced by the Ludington Daily News for Ludington State Park



DNR website:
www.michigan.gov/dnr

Ludington State Park • (231) 843-2423
8800 W. M116, Ludington MI 49431

Central reservations
(800) 447-2757

Track chair expands access in state park for mobility-challenged

Donated by Friends of Ludington State Park

BY STEVE BEGNOCHE

An Action Track Chair purchased for Ludington State Park by Friends of Ludington State Park will improve access to miles of trails, the 1.8-mile walk (one way) trek to iconic Big Sable Point Lighthouse and the beach to people with mobility challenges.

The powered, tracked chair is now available to use, by reservation on the Friends of Ludington State Park website, <https://friendsofludingtonstatepark.org>, at no cost to the user.

Life-long area resident Jamie Spore, who uses a wheelchair having been born with spina bifida, recently used the Action Track Chair in the park on the Logging Trail and the beach near the Lake Michigan beach house.

"I had a blast!" said Spore, the 2016 Miss Michigan Wheelchair who serves on a Michigan barrier free design board. "It was so cool to be able to explore parts of the state park that I've never seen before even though I have lived here all my life."

"The Logging Trail reminded me of an enchanted forest like the ones you read about in children's books. The warming shelter was so neat, too."

But the best was yet to come.

"My favorite part of the day was visiting the beach. That was a blast! That was the first time in my life I ever successfully drove through sand," Jamie said.

Earlier this spring, the park installed an FLSP-purchased SeaCoast EnChroma viewer on the Skyline Trail. The viewer enables color blind individuals to see color. A bike fixing station to be installed near the park headquarters also is an FLSP-funded project. In 2021, FLSP purchased a universal access kayak/canoe launch for use at the Hamlin Lake beach.

"Over the past 10 years, we have really focused on accessibility improvements for our visitors," Ludington State Park Manager Jim Gallie, stated. "We've been fortunate to have such a great partnership with the Friends of Ludington State Park."

FLSP, a 401(c)3 non-profit, is marking its 30th year of helping Ludington State Park with a goal of making improvements to the park, its environment and the visitor experience through fund-raising for projects the park often is unable to do on its own and in providing volunteer support.



STEVE BEGNOCHE PHOTO

Jamie Spore drives the Action Track Chair on the Logging Trail at Ludington State Park. The gift from the Friends of Ludington State Park to the park is available to reserve by those with mobility limitations at <https://friendsofludingtonstatepark.org>.

unteer support.

"The playground at Hamlin, the accessible beach walkway and now the EnChroma viewer and track chair, are all made possible because of this partnership," Gallie said.

"The Friends are excited to have provided the track chair to allow individuals with mobility challenges in-

creased access to the beauty of the Ludington State Park," said Patrick O'Hare, FLSP president. "Because we expect the track chair to be a very popular, we are currently fundraising for a second track chair to be added in May 2023."

A Community Foundation for Mason County grant, funds donated to FLSP as the

charity recipient of the Pure Ludington Brerewfest and donations from individuals were used to purchase the track chair and a trailer for it.

"We expect that the track chair will get a lot of use by people visiting the lighthouse," Gallie said. "I expect that is where it will be most popular."

Spore said she was pleasantly surprised by how easy the chair is to control.

The rider uses a mounted joystick to control the chair.

It also has an option for a person walking behind the chair to control it by a hand-held joystick if the rider is unable to operate a joystick.

Users of the chair will be required to be able to transfer into or out of the chair on their own or have someone with them who can assist in the transfer.

"Use of the chair will be limited to some areas, primarily so we can access the chair with our equipment in case it breaks down," Gallie added. "The beaches, lighthouse road, pathways around Hamlin and the Logging Trail are where we're going to start out allowing its use. If we discover more locations where we can get our equipment and trailer, that may change."

"We really appreciate the Friends group help in getting this chair for our visitors."

"It was fun!" Spore said of the track chair outing. While riding, she proclaimed, "It's a good day to be Jamie!"

For more information, see <https://friendsofludingtonstatepark.org>.

Welcome back to our Paradise!



BEVERAGE CO., INC.
Serving Western Michigan

ToddandBradReed.com



Welcome to Ludington State Park

Hello. On behalf of the park staff, I'd like to welcome you to the 5,300 acres of sandy dunes, shaded forests and clean waters that make up Ludington State Park. We hope that you enjoy your stay, whether you are here for two weeks or two hours.

There is a lot to do at Ludington State Park and we encourage you to see as much as you can during your stay. If you have limited time, make sure to check out the beach, Hamlin Dam and at least one of the shorter trails — the Skyline or Island Trails are sure hits for good views. If you are here for a longer



Park Manager Jim Gallie

stay, you can explore the park at a more leisurely pace, exploring the longer trails or making the hike out to the Big Sable Point lighthouse.

The historic Lake Michigan Beach House, built by the Civilian Conservation Corps during the mid-1930s, is a great start to your visit. The upper level of the beach house contains a wonderful 3D map that highlights the most interesting spots to visit in the park. Exhibits that focus on the Great Lakes, the park's flora and fauna, and the history of the park are displayed

here. On most summer afternoons, COVID-19 guidelines permitting, Park Interpreter Alan Wernette and his staff host programs in the beach house. Stop by to see them.

Pet owners will want to check out the pet friendly beach north of the Big Sable River and south of the Lake Michigan beach house. Lower Lake Michigan water levels mean that this area has a larger beach than it has in the past few years. Make sure to follow the pet rules outlined in this newspaper.

If you have younger kids, make sure to visit Hamlin Lake, with its family friendly beach and playground. The playground has one section designed for younger children, so they'll have the opportunity to play and explore away from the bigger kids. This playground is accessible for people with disabilities, too.

Accessing Hamlin Lake by canoe and kayak has become even easier with the addition of an accessible kayak launch, located between the park's boat launch and beach. This allows people of all abilities the opportunity to get on the water without getting wet feet.

Earlier this spring, the Friends of Ludington State Park made it possible for visitors with mobility issues to access the beach and some trails by purchasing and donating an Action Track Chair. This motorized chair can be propelled by a joystick along trails, uneven terrain and in shallow water, up to 4 inches deep. The chair is free to use but does need to be reserved in advance. Reservations can be made through the Friends of Ludington State Park website at www.friendsofludingtonstatepark.org

We hope that you enjoy your time at this gem of a park along the Lake Michigan shoreline.

State park entrance fees

All vehicles entering Michigan State Park and Recreation Areas and boating access sites are required to display a Michigan Recreation Passport.

SAVE MONEY AND TIME. PURCHASE YOUR PASSPORT AT THE SECRETARY OF STATE

The easiest way to purchase the Recreation Passport is to do so when renewing your vehicle registration at the Michigan Secretary of State.

Doing so also saves you \$5 off the at-park purchase price. Let the SoS know that you want to purchase the passport and they will add the fee to your plate renewal.

PURCHASE AT THE PARK

If you didn't have the Recreation Passport added to your license plate when renewing it, you can still buy a permit at the park when you come to visit. Staff will be happy

to sell Michigan residents a passport that can be put on their windshield.

Non-Michigan residents can only purchase a passport, to be displayed on the passenger's side of the windshield, at the park.

Non-residents can purchase yearly or daily passports.

The Recreation Passports can be purchased at the park entrance or camper registration buildings during the

busy seasons. During the slower seasons, passports are available at the park office.

To learn more about the Recreation Passport, visit www.michigan.gov/recreationpassport.

Recreation passports

Resident Motor Vehicles: \$17
Resident Motorcycles: \$11
Non-resident annual: \$36
Non-resident daily: \$10

HELP PREVENT THE SPREAD OF FOREST PESTS AND DISEASE!

Buy wood locally

Use kiln dried firewood

Burn it all before you leave

DO YOUR PART: DON'T MOVE FIREWOOD!

Friends of Ludington State Park

Friends of Ludington State Park (FLSP) is a 501(c)3 nonprofit organization established in 1992 and dedicated to promoting wise use and conservation of the gem that is Ludington State Park.

FLSP works to support and improve the park through the funding of projects, recreational equipment, interpretive programs, and by volunteering to assist park staff on projects and trail clean-up. FLSP funded and helped build the accessible playground at the Hamlin Lake Beach House and the new kayak / canoe launch on Hamlin Lake. Additional FLSP funded projects include:

- The accessible beach walkway and wheelchairs;
- The park warming shelter and repairs to the trail shelters;
- Snowshoes and cross-country ski trail groomer;
- Interpretive signage throughout the Park.

FLSP ongoing activities include:

- Funding the summer entertainment programs held on Wednesday and Saturday evenings as well as interpretive programs throughout the year;
- Purchasing and helping with the planting of trees to replace ones de-

stroyed by invasive species;

- Coordinating the recycling of MI returnable bottles and cans;
- Hosting virtual educational sessions during the winter;

Support the programs and volunteer activities provided by the Friends of Ludington State Park by becoming a member or making a donation today via our website www.friendsofludingtonstatepark.org. Memberships or donations can also be made by visiting the Park Office or mailing a check to FLSP, PO Box 123, Ludington, MI 49431.

Please help us recycle

Ludington State Park's staff recycles a lot of waste that is created while maintaining the park. Cardboard, paper, batteries, light-bulbs, oil, empty plastic containers, concrete and scrap metal are a few of the items recycled at the park.

You can help us reduce the amount of waste heading to landfills by using our recycling center. The recycling center is located next to the Cedar Campground store. Plastics, aluminum, clear glass and water bottles are accepted. Make sure containers are clean before recycling. This eliminates smells for campers and doesn't draw unwanted insects and animal pests to the recycling bins. Please do not put trash, such as food waste, fishing line, plastic bags or returnable bottles and cans in the recycling bins; instead, use the dumpsters located near the recycling bins.



RETURNABLE BOTTLES AND CANS

Michigan places a 10-cent deposit on all carbonated beverage containers. By dropping off those containers at the campground host site or other locations at the campground entrances, you will be helping the Friends of Ludington State Park. The park's campground hosts and Friends members sort and return these "returnables" to area beverage distributors, helping to fund many of the organization's projects and improvements.

Recently this money has helped fund the accessible beach walkway at Lake Michigan, a cross country ski groomer and the events and programs that take place at the amphitheater. Help the Friends of Ludington State Park continue this successful program. Don't drop your returnables in the trash; donate them to the Friends group!

Park tips and FAQs

WHERE ARE THE NEAREST GROCERY STORES?

Family Fare, Aldi's, Wal-Mart and Meijer are all on U.S. 10, east of Ludington.

WHERE CAN WE GET OUR PROPANE TANK FILLED?

Tanks can be filled at Smith's Propane, 2985 W. U.S. 10; Ponchos's Pond RV Park, 5335 W. Wallace Road (behind McDonald's); Vacation Station RV Park, 4895 W. US 10; and at Hamlin Grocery, 3611 N. Jebavy Drive. Tank exchanges are also offered at several businesses in the area.

IS ALCOHOL ALLOWED IN THE PARK?

Yes, in Michigan you must be over 21 to possess or consume alcoholic beverages. General state laws concerning possession/consumption apply in Ludington State Park. Some state parks may have other restrictions posted.



Biking at the state park

At times it seems that there are more bikes in the park than cars. To have a safe and enjoyable biking experience, we ask that visitors:

- Avoid riding after dark. If you must, bike slowly and use a light.
- Yield to pedestrians. If approaching from the rear, slow down and let them know which side you will pass by them.
- Keep speeds down, especially on paved footpaths and boardwalks.
- Be alert for moving vehicles, espe-

cially in parking lots. Yield to all vehicles.

- Do not ride or leave bikes in breeze-ways or in front of doorways.
- Please use bike racks and lock up your bikes when left alone.
- Stay on paved areas, except for the Lighthouse Road and your campsite.
- Biking is NOT allowed off-road or on dirt or woodchipped trails.

Shopping and rentals

DUNE GRASS CONCESSIONS

There are three locations within the Ludington State Park that are operated by Dune Grass Concessions. For more information regarding Dune Grass Concessions, call 231-843-1888 or visit www.dunegrassludington.com.

THE CEDAR CAMP STORE

Ice cream, wood, ice, groceries, toys, apparel, and souvenirs are all available at the Cedar Camp Store. Bicycles are available for rent by the hour or day.

Open mid-May through late October. Hours: 9 am – 9 pm

THE HAMLIN LAKE CONCESSION

At this Hamlin Lake location, visitors can rent canoes, kayaks, paddle boards, paddle boats, row boats, and inflatable tubes.

Open every day mid-June through Labor Day; weekends through October. Hours: 10 am – 7 pm

THE LAKE MICHIGAN BEACH HOUSE

The perfect place to treat yourself to a hand-dipped ice cream cone while experiencing brilliant sunsets each night. The beach house offers pizza, subs, hot dogs, snacks, sun protection, clothing and souvenirs.

Open Memorial Day through Labor Day. Hours: 11 am – 9 pm

Enjoying Ludington State Park with your pet

Pets can be an important part of one's family and they are welcome at Ludington State Park. While visiting the park with your pet, be aware that there are rules in place for the safety and courtesy of park guests and other pets.

For all pets visiting Ludington State Park, the following rules apply:

PETS MUST be on a 6 foot leash at all times

PET OWNERS must clean up their pet's waste

PETS CANNOT be left unattended anywhere in the park

PETS CANNOT be allowed to bark excessively, exhibit aggressive behavior or cause a disturbance

PETS ARE not allowed on park beaches, unless designated as a "Pet Friendly" beach

It is the responsibility of pet owners to follow the park's rules



regarding pets. Failure to comply with the rules may result in a warning, citation or the eviction of the pet from the park.

Pet-friendly water access in the park — Now including Lake Michigan

Many pets love playing in water. And with so many miles of Lake Michigan shoreline, it seems that Ludington State Park would have plenty of places for pet owners to take their pets swimming. Unfortunately, it isn't so simple as to let pets swim anywhere along the shore. Endangered piping plovers nest along much of the shoreline and pets and plovers don't do well together. However, this year the park has received permission to open a pet-friendly beach to give pet owners access to Lake Michigan. Most park beaches are closed to pets, but here are a few "pet-friendly" water access points in the park. Leash rules still apply and cleaning up after your pet is mandatory.

Along Lake Michigan, north of the Big Sable River, as signed - may

be subject to closure if piping plovers nest in the area

- Piney Ridge Lake, one half mile north of Piney Ridge Road's intersection with M-116

- Lost Lake, north of the Beechwood Campground

- The sandy shoreline of Hamlin Lake on the south side and east of the dam

PET-FRIENDLY LOCATIONS IN LUDINGTON

- The city dog beach, near the Loomis St. boat launch, a short walk from downtown

- Central Bark, a leash free dog park located in Cartier Park, five miles south of LSP

- Many restaurant patios are pet friendly. Check out www.pureludington.com/petfriendly for more recommendations.

Grand Opening - Summer 2022!



Bringing history to life!

The Mason County Historical Society is one of the largest Historical Societies in Michigan, operating both Historic White Pine Village and the Port of Ludington Maritime Museum! Research Center opening Summer 2022!

Mason County Emporium and Sweet shop at the Mason County Research Center to open on Memorial Day weekend



**MASON COUNTY
RESEARCH
CENTER**

130 E. Ludington Ave.
Downtown Ludington

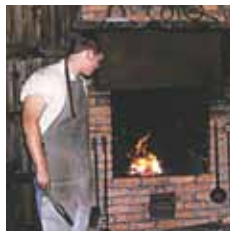
Come and meet the pioneers!

Living History Days at Historic White Pine Village
Open Tuesday - Saturday starting May 7
Docents are on site from 11:00 am - 3:00 pm daily



**HISTORIC
WHITE
PINE
VILLAGE**

1687 S. Lakeshore Dr.
Ludington, Michigan



Pilot a car ferry across Lake Michigan!

Open Tuesday - Saturday
starting May 7th



**PORT OF
LUDINGTON
MARITIME
MUSEUM**

217 S. Lakeshore Dr.
Ludington, Michigan

**COMBO
TICKETS
AVAILABLE!**

MasonCountyMiHistory.org | 231-843-4808



OVER
35
INTERACTIVE
EXHIBITS



Create. Discover. Explore.

Our Summer Program Line-up

We will be offering educational classes and programs this summer for kids to keep learning! Please call the museum to register: 231.233.9326

Special Summertime Program Days

Check our website for the schedule of specific crafts and activities planned for the summer.

sandcastleschildrensmuseum.com



See You At Sandcastles

Summer Hours:
Mon - Sat: 9:30 am - 5:00 pm
Sunday: 12:00 - 4:00 pm

Fall/Winter/ Spring Hours:
Friday: 9:30 am - 1:00 pm
Saturday: 9:30 am - 3:00 pm
Sunday: 12:00 - 4:00 pm
Monday: 9:30 am - 1:00 pm

Sandcastles features over 35 interactive exhibits for children. From our real Cessna airplane and control tower to our Hospital Baby Nursery and Sound Stage, each exhibit is designed to help children learn as they play!

129 E. Ludington Ave. • Downtown Ludington • 231.233.9326

Park tips and FAQs

NOW THAT MARIJUANA IS LEGAL IN MICHIGAN, CAN I USE IT IN THE PARK?

No. The Michigan Regulation and Taxation of Marihuana Act, which legalizes the consumption of marijuana in Michigan, prohibits the consumption or smoking of marijuana in public places. In the event that park staff become aware of the consumption or smoking of marijuana in the park, appropriate law enforcement action will be taken.

ARE FIREWORKS ALLOWED IN THE PARK?

It is unlawful to use or ignite fireworks or sky lanterns in Ludington State Park.

WHERE CAN WE RENT A BOAT?

Canoes, kayaks, paddle boats and rowboats can be rented at the Hamlin Lake concession and Cedar Campground Store. To find out about other boat rentals on Hamlin Lake, pick up a brochure from the campground registration station. For Lake Michigan charter boat trips, check with the Ludington Area Chamber of Commerce at (800) 542-4600 or visit the Chamber website at www.ludington.org

MAY WE GATHER DEAD WOOD ON THE GROUND FOR OUR FIRE?

Dead wood provides food and homes for wildlife, helps prevent erosion and creates valuable topsoil in the forest. Campfire wood can be purchased at the park store.

CAN WE COLLECT SNAKES, FROGS AND TURTLES?

It is illegal to collect frogs, snakes, turtles or any other wild creatures in the state park. Many of these animals are dying off. You can help protect them by keeping them wild.

AFTER I CHECK OUT, CAN I LEAVE MY VEHICLE ON THE CAMPSITE WHILE I VISIT THE BEACH?

No. If you want to spend time at the beach after check out, try to clear your site before 11 a.m. This will give you a better chance of finding a double-length parking space in one of the day use lots designed for motorhomes and cars pulling trailers. You may also park on the west side of M-116. We do not allow large camping units to park in areas not designated for them.

WHERE IS THE SANITATION STATION?

The sanitary dump station is located at the campground registration office, two miles south of the park entrance booth. There are also sanitation stations for portable waste tanks located in the Pines, Cedar and Beechwood campgrounds.

WHAT SHOULD I DO TO MY CAMPSITE BEFORE I LEAVE?

To leave a clean and safe site for the next campers, put out your fire in the fire ring with water, pick up any litter on the site and clean and wipe down the picnic table. Remember to always leave the site cleaner than when you arrived.

ARE BICYCLES ALLOWED IN THE PARK?

Bicycles are allowed on all paved roads and paths, your campsite and the road to the lighthouse. Try to avoid riding after dark. If you must, slow down and use a light. Keep speeds down and yield to pedestrians. If approaching from the rear, let them know by hollering out. Be alert for moving vehicles. Don't ride or leave bikes in front of doorways or in restroom breezeways. Bikes left alone should be locked up.

WHERE ARE THE RECYCLING BINS IN THE PARK?

The recycling center is located next to the Cedar Campground Store. Plastics, aluminum and clear glass are accepted, if clean. Please use general waste bins for garbage and food waste.

Lighthouse Closed to Tours, Gift Shop Open

The lighthouse is closed for cleanings on Mondays in 2021, but the lighthouse gift house will be open Fridays through Sundays, from 10 a.m. - 5 p.m.



Trail etiquette at Ludington State Park

While outdoors enjoying Ludington State Park's trail system, please follow these guidelines so the park remains enjoyable for all.

PACK OUT what you pack in. Carry out and dispose of all of your trash, including **CIGARETTE BUTTS** and fruit peels.

PLEASE LEAVE wildflowers, wildlife and historic objects undisturbed so that all visitors may enjoy them.

PETS MUST be leashed at all times. Please clean up after your pet using the provided pet clean-up bags located at trailheads.

BICYCLES ARE only permitted on paved paths and the Lighthouse Road.

THE SOFT, sandy soils of Ludington State Park erode easily. Please stay on designated trails and avoid taking shortcuts across steep slopes.

TO AVOID spreading seeds from invasive plants, please

use the boot brushes provided at trailheads to clean your footwear before and after hiking on park trails.

HUNTING IS allowed in the park. During hunting seasons, wear bright orange clothing while in designated hunting areas.

HIKE SAFELY. Check the weather forecast before heading out and dress appropriately. Carry a trail map and let an acquaintance know your hiking plans.

Camping at Ludington State Park

What is the cost for camping?

Base Rates When restrooms are open:

50 amp sites: \$42
20/30 amp sites: \$38
Tent Loop: \$30
Weekends and Holidays: Add \$3

Jack Pine: \$20
Mini-cabins: \$52

When restrooms are closed:

20/30/50 amp sites: \$34
20/30 amp sites: \$30
Tent Loop: \$20
Jack Pine: \$20
Mini-cabins: \$41

How do I make a reservation?

Reservations can be made for all Michigan State Parks by calling the Central Reservation System (CRS) at (800) 44 PARKS or going online to www.michigan.gov/dnr.

How many sites are reserved?

At Ludington State Park, 100 percent of the sites may be reserved in advance.

It is very important to make reservations in advance.

How early can I make my reservation for next year?

You can make reservations six months in advance for campsites, and one year in advance for the park's mini-cabins.

How many nights may I stay?

You may stay up to 15 consecutive nights.

How old do you have to be to register a campsite?

At least one member of the camping party must be 18 years of age or older.

Is there water available at the campsites?



There are no water hook-ups on the sites. Water is available within walking distance at several locations throughout the campground or at the park sanitation station located at the campground registration building.

Will I lose my reservation if I don't get there on time?

We will hold your site for 48 hours beyond check-in time, which is 3 p.m. on the date you are due to arrive.

Arrival after that time will result

in a "no show", resulting in the loss of the first two nights and reservation camping fees.

Requests to the park to hold the sites beyond this time will be denied. If you plan on arriving more than 48 hours after the check-in time, you must contact CRS to modify your reservation to avoid the loss of your site.

What time is check-out?

Campers must be packed up and off of their campsite by 1 p.m.

Can I get a refund if I leave early?

After staying the minimum required nights, you can get a refund for unused nights.

You must clear your campsite and be at the reservation office before 1 p.m. to receive a refund for that night and all subsequent nights, minus the cancellation fee.

If I decide to stay longer, can I get an extension?

Due to the park's popularity, it is very difficult to extend your stay.

To see if sites are available and to extend your stay, visit www.michigan.gov/dnr or call (800) 44-PARKS (447-2757).

How many vehicles may we have parked on our site?

You may have two full-size vehicles in addition to your camping units. Motorcycles count as half-size vehicles, so two motorcycles take the place of one full-size vehicle.

Where can I park my boat trailers or extra vehicles?

The park has very limited overflow parking for extra vehicles or equipment that won't fit on your site.

If these spaces near the amphitheater are full, you will have to find a location outside of the park for overflow parking.

We recommend that you limit the number of vehicles brought to the park. **Please note, overflow parking is not allowed in the loop closest to the amphitheater.**

May our friends visit?

Yes, as long as they visit between the hours of 8 a.m. and 10 p.m.

Remember, you can't have more than two vehicles on your site, so your friends may need to park in one of the day use lots outside of the campground.

When is quiet time in the park?

To avoid disturbing neighboring campers, quiet time is all the time. Official quiet hours are from 10 p.m. until 8 a.m.

During these hours, rangers will be particularly strict about loud voices, electronic devices, motor vehicles and even late night camp set-up that may disturb the peaceful atmosphere other campers expect to enjoy.

Hunting and trapping at Ludington State Park

Did you know that almost two-thirds of Ludington State Park is open to hunting and trapping? The park boasts opportunities for deer, small game and waterfowl hunting. Standard hunting regulations and seasons apply. "No hunting/Hunting" areas are clearly posted throughout the park. Visit the park office for maps that show the areas open to hunting and trapping.

Wetting a line at Ludington State Park

Ludington State Park offers many fishing opportunities for people of all ages. Three water bodies in the park provide a variety of fish species to go after. Fishing licenses are required and the Big Sable River does have a special regulation regarding what type of fishing gear can be used.

Read the DNR fishing guide for guidance.

Hamlin Lake

Access: Hamlin Lake fishing platforms, boat launch or four miles of shoreline

Target species: Crappie, bluegill, sunfish, large and smallmouth bass, pike, muskies, perch and walleye

Lake Michigan

Access: Boat launches in City of Ludington, seven miles of surf fishing

Target species: Chinook and Coho salmon, brown trout, lake trout

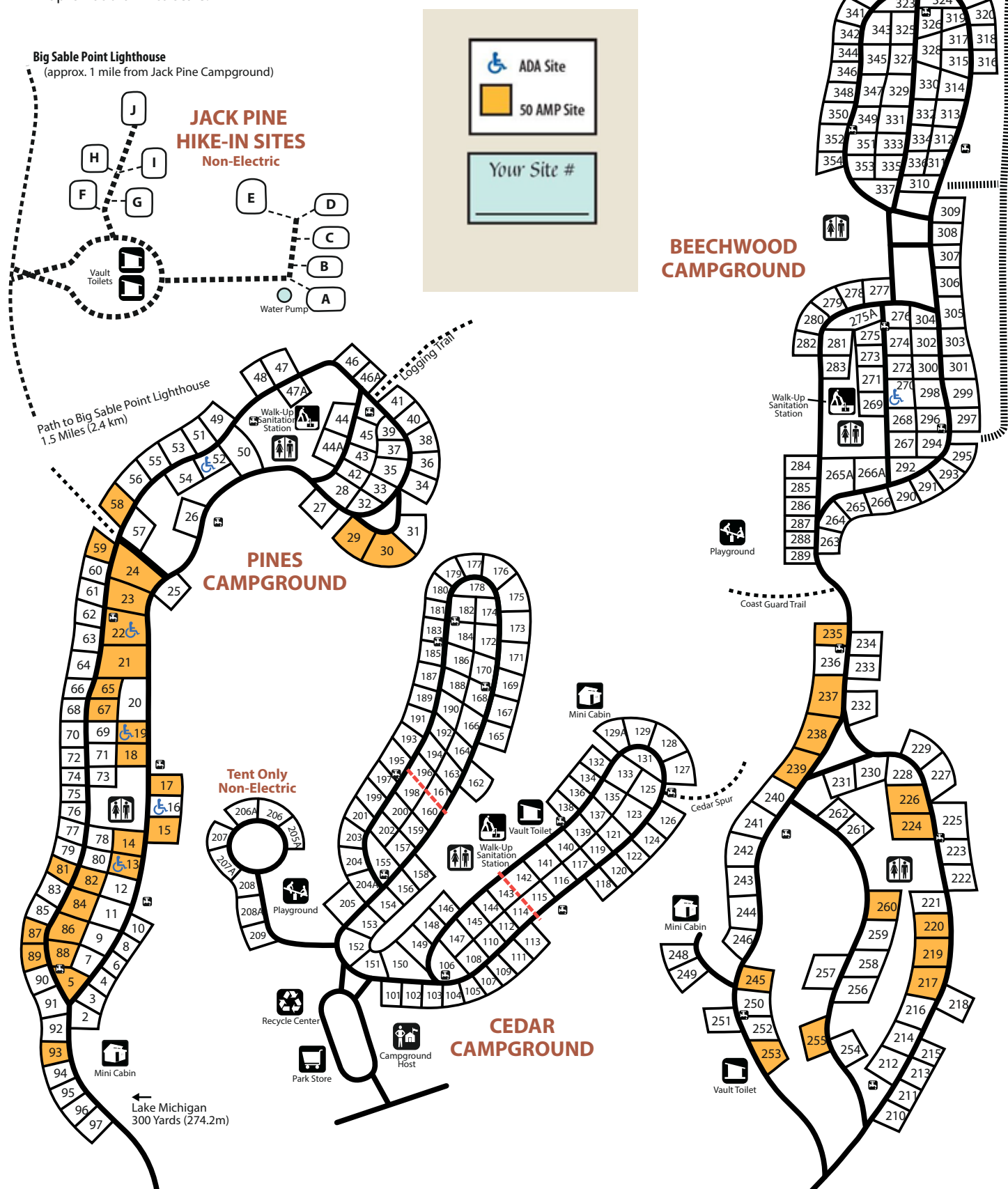
Big Sable River

Access: Shoreline, Hamlin Dam boardwalks, river mouth

Target species: Coho and Chinook salmon, steelhead, perch

Ludington State Park Campgrounds

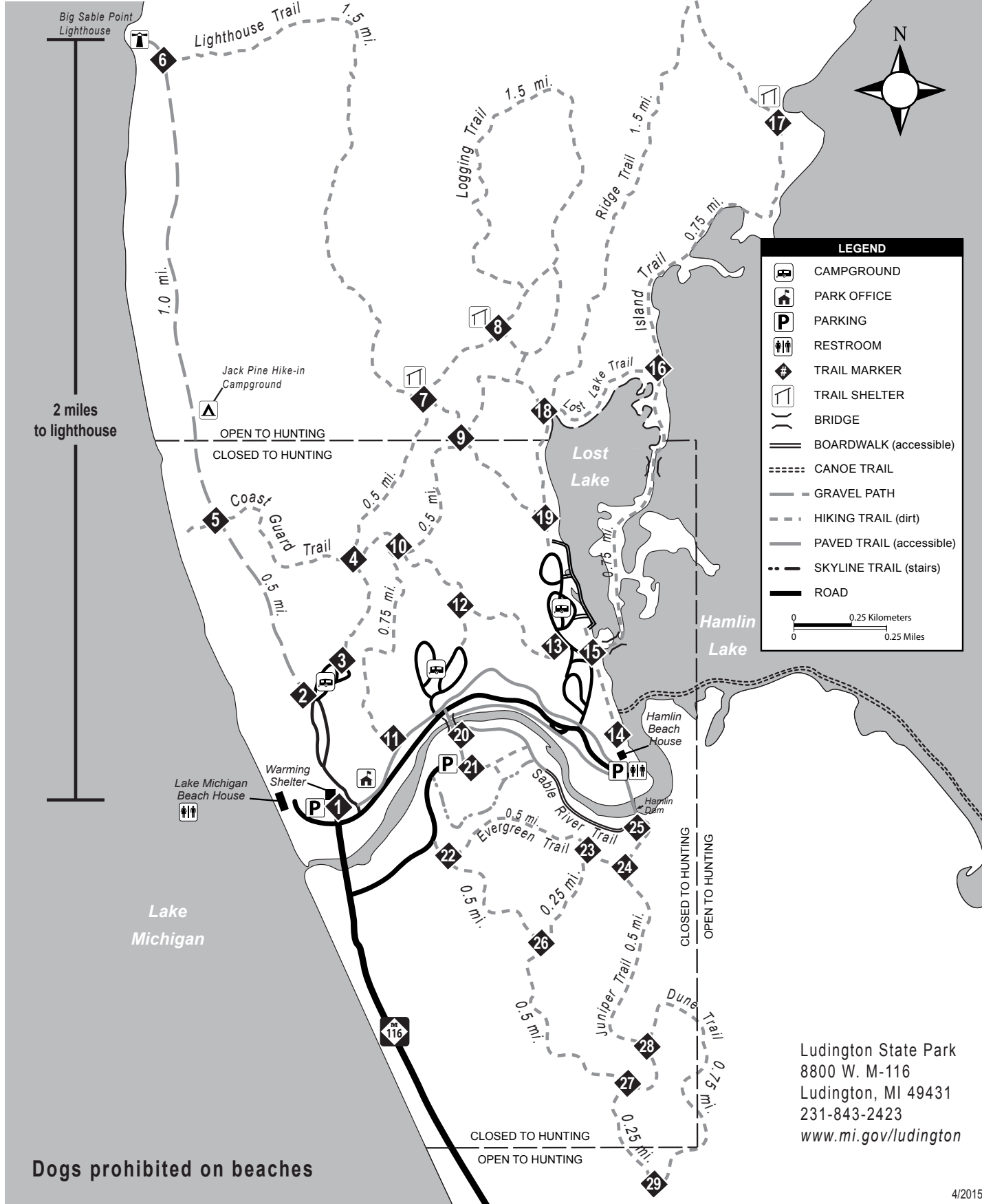
Map is not drawn to scale.





RECREATIONAL TRAILS

Ludington State Park



Ticked off? Be tick-aware!

Ticks are becoming more and more prevalent in the outdoors of Michigan. That doesn't mean you shouldn't enjoy getting out in nature. Safely enjoy Ludington State Park by following these tips.

WHILE OUTDOORS:

- Use a repellent. Deet and permethrin are the most effective. Use as directed.
- Walk down the center of trails to avoid vegetation where ticks hang out.
- Wear light colored clothing so that ticks are easier to spot.
- While not fashionable, long pants tucked into socks helps keep ticks on the outside of your clothes.

AFTER OUTDOOR ACTIVITIES:

- Give yourself a tick inspection. Inspect under arms, around the waist, in or around hair, between the legs and around the ears.
- Check your clothing and equipment for ticks. A lint roller can help pick ticks from clothes.

IF BITTEN BY A TICK:

- Remove using tweezers or a tick-removal tool
- Grasp tick as close to the skin as possible and slowly pull straight out
- Immediately wash the bite area with soap and water
- Keep the tick. Use a Ziplock or scotch tape or a small container to keep the tick. If you become ill, you can bring the tick to the doctor for testing.
- Keep an eye out for any signs of illness. If you become ill, visit a doctor.

Ludington State Park has black legged, or deer, ticks, which have been known to carry Lyme disease and Rocky Mountain Spotted Fever. Be tick-aware so that you can enjoy Ludington State Park safely.

To learn more about symptoms of Lyme disease or Rocky Mountain spotted fever and early detection, visit the Center for Disease Control's website at www.cdc.gov.

Ludington State Park
8800 W. M-116
Ludington, MI 49431
231-843-2423
www.mi.gov/ludington

How to Explore Pure Ludington

Known for its magnificent natural resources, sugar sand beaches, small-town charm and fun festivals events, Ludington and surrounding Mason County make a popular vacation destination offering something for everyone.

OUTDOOR RECREATION

Mason County is a popular destination for outdoor recreation pursuits, including biking, hiking, golf, fishing and paddle sports. Ludington's parks - from 5,300-acre Ludington State Park to in-town Cartier Park with a one-mile paved loop and access to 10 miles of singletrack- supply miles of trails for hiking and biking. For a more rustic experience, picturesque Nordhouse Dunes Wilderness Area in Huron-Manistee National Forest affords hiking solitude and scenery. Golfers also will love the three public golf courses in the immediate vicinity - Hemlock Golf Club, Lakeside Links and Lincoln Hills Golf Club. If you're more into disc golf, Mason County has seven disc golf courses within a 15-minute radius - including Mason County Park with three 24-hole courses (including Goliath, the third largest course in the world), Leviathan at Ludington School Forest, The Edge at Scottville Riverside Park, Labyrinth at West Shore Community College and the new Tinderbox short course at Mason County Campground.

BEACHES AND WATERWAYS

If a day on the water is your idea of the perfect vacation, then you're set! Mason County boasts 28 miles of Lake Michigan shoreline, including seven miles within Ludington State Park's boundary - including a small dog-friendly section. Those who want a beach walkable from downtown will enjoy Stearns Park Beach, offering a family-friendly atmosphere perfect for playing in Lake Michigan or building a sandcastle. The park also boasts a grassy area with picnic tables and grills, a playground, skate park, mini-golf, volleyball and shuffleboard. Mason County also has 2,000 miles of streams, three rivers and more than 40 inland lakes, making paddling and



fishing a top activity. Ludington is the #1 salmon fishing port on Lake Michigan, with more than 45 licensed charters leading excursions. Fishing on the Pere Marquette River also is popular, and outfitters can help you enjoy a day on the river - whether you need a river guide or a kayak rental.

CULTURAL ATTRACTIONS

When it comes to cultural attractions, Ludington has it in spades. Visit the Port of Ludington Maritime Museum, celebrating its fifth anniversary in 2022, and Sandcastles Children's Museum - each offering interactive exhibits to spark imaginations (also ideal for rainy days). Outside the maritime museum is the Maritime Heritage Trail along Ludington's harbor. Waterfront Park, with its collection of nine bronze sculptures, playscape area and grassy picnic grounds, is another crowd-pleasing stop that educates about the region's history as the primary home of the Mason County Sculpture Trail. It also makes an ideal spot to watch the S.S. Badger, the last coal-fired steamship in the

United States, cross Lake Michigan daily to Manitowoc, Wisconsin. Ludington also boasts two historic lighthouses - Big Sable Point Light in Ludington State Park accessible via a two-mile/one-way trail, and Ludington North Breakwater Light in Stearns Park Beach, reachable via a half-mile walkable pier (also a perfect spot to watch the sun set). Both are open for tower climbs in the summer. Art lovers can take in current exhibits at the Ludington Area Center for the Arts or shop the small gift shop stocked with artisan-made wares. Further afield is Historic White Pine Village, an interactive historical experience that lets visitors wander among more than 30 buildings depicting what life was like more than 100 years ago in Mason County.

DOWNTOWN SCENE PLUS FOOD & DRINK

Looking for a fun downtown scene? Ludington's vibrant downtown district features boutique shops, art galleries, local eateries and fun drink spots - including two microbreweries that also

serve food (Jamesport Brewing, Ludington Bay Brewing). You can also get a caffeine pick-me-up at Red Rooster or HumaniTEA. And don't forget dessert - favorite stops include Kilwin's for fudge and ice cream, KRAVE for frozen yogurt, and third-generation family-owned House of Flavors for its legendary ice cream (plus tasty breakfast, lunch and dinner entrees). You can also enjoy take-out, watch live music or shop the Thursday Artisan Market or Friday Farmers Market at the new Legacy Plaza at the intersection of Ludington Avenue and James Street in the heart of downtown. Or grab an adult beverage from participating establishments and enjoy it outside in the new Ludington Outdoor Social District (LOSD) in designated downtown areas. Looking for a dining spot closer to the state park? Try the newly renovated STIX Ludington that is now a two-story, fine dining restaurant featuring an outdoor rooftop, a beer garden with bocce and corn hole green plus space for movies and other games, and a covered patio with fireplace. The former

Park Lanes bowling alley also has been renovated, with 12 state-of-the-art lanes.

FESTIVALS

Providing entertainment for the whole family, Ludington hosts a number of festivals and events all year long. Highlights include the July 4th Freedom Festival, Sunset Beach Bonfires, West Shore Art Fair, Offshore Classic Fishing Tournament and Suds on the Shore craft beer festival. Free, open-air concerts such as Rhythm & Dunes and the Summer Live Music series at Legacy Plaza produce music, dancing and fun.

MORE INFORMATION

Visitors of all ages will find plenty to do while visiting the Ludington area. For Ludington news, events and points of interest, visit pureludington.com or call 845-5430. Or stop by one of Ludington's visitor information centers at 119 S. Rath Ave. (year-round) or 226 West Ludington Ave. (Memorial Day to Labor Day) for brochures or to speak to a visitor liaison.

Wondering where to start for your visit to Ludington State Park?

Eleven must-see places to visit in Ludington State Park

Lake Michigan

Enjoy swimming, sunbathing and sunsets along seven miles of sugar-sand beaches that line the Lake Michigan shoreline in Ludington State Park. More than three miles of these beaches are but a short walk from your vehicle, providing easy access to Lake Michigan's waters.

Big Sable Point Lighthouse

A two-mile hike or bike ride north of the park entrance, this iconic structure stands watch over Lake Michigan and the freighters that ply its waters. Tour the museum or climb to the top for breathtaking views of the park's dunes and waters.

Skyline Trail

An elevated boardwalk guides visitors for a half mile along the ridge of a large sand dune south of the Big Sable River. South facing vistas overlook the southern half of the park, its dunes and jack pine barrens, and the community of Ludington.



of the best wildlife viewing in the park.

Fishing is a popular activity on the Big Sable and tubing the river is a wonderful way to spend a hot summer day.

Lost Lake

Shallow Lost Lake is separated from Hamlin Lake by a series of islands and peninsulas. The Lost Lake and Island Trails circumnavigate this kayak-friendly lake, allowing hikers to experience its serenity. Fishing can be good, so bring along a pole.

Hamlin Dam

Holding back the waters of Hamlin Lake, this popular location is an excellent place to begin a short kayak or tubing trip downstream during the summer.

Boardwalks below the dam are fine fishing spots and the walkway across the top of the dam provides a great view of salmon fishing action in the fall.



Big Sable River

Gently gliding through the park for a mile from Hamlin Lake to Lake Michigan, this short stretch of tree-lined river is home to some



of all ages at this outdoor stage set in the pines on the south side of the river.

Trail Shelters

Built by the Civilian Conservation Corps as the park's trails were being created, these stone structures provide visitors with a sheltered place to rest while exploring the park's interior. Three shelters remain of the original seven. Can you find them all?

Lake Michigan Beach House

In 1935, Camp Ludington Civilian Conservation Corps members built the Lake Michigan beach house just north of the Big Sable River outlet using Mason County lumber and repurposed bricks from the old Morton Salt factory in Ludington.

Their work has stood the test of time, as this beautiful building continues to provide views of Lake Michigan sunsets at the end of the day.

Historic Town of Hamlin

Before there was Ludington State Park, there was the small lumber town of Hamlin. Founded by lumber baron Charles Mears, this community thrived along the Big Sable River before floods destroyed it in the early 1900s.

Remnants of the town are still present. Join up with one of the park's guided hikes through this area to learn about the town's fascinating history.



Canoe Trail

Want to get away and discover one of the quieter areas of the park?

This four-mile trail takes paddlers along Hamlin Lake and into the wetlands, ponds and marshes that line its shore. Signs guide paddlers through the waterways and over four short portages. Wildlife

abounds.

Amphitheater

After a day spent enjoying the park's beaches and trails, unwind during the evening while enjoying programs at the park amphitheater. Musicians, magicians, storytellers and wildlife rehabilitators provide entertainment for visitors

We Apologize for the Mess in Beechwood

This isn't how we envisioned the start to the camping season in Beechwood. We had planned to have a new electrical system with pedestals on each site. We planned on having made accessibility improvements to a number of sites in Beechwood, something that has long been needed. We had planned on having two, brand new toilet and shower buildings in Beechwood.

Unfortunately, these improvements have not been completed.

Unforeseen scheduling delays, supply chain issues and contractor problems have resulted in a delay to the electrical system and campsite im-

provements. This work will now begin in mid-October. The restroom buildings were not able to be completed in time for the planned opening of Beechwood on June 24th. We understand that you come to the park to relax and enjoy the natural surroundings, so we are not going to allow construction of the buildings to continue while the campground is open. The toilet and shower building work will continue in mid-October.

To help mitigate the lack of restrooms in Beechwood, we are installing a portable, modern restroom unit in front Beechwood and porta-jons in back Beechwood. We have dis-

counted the rate for campers who have already made reservations in the Beechwood or have allowed campers to cancel their reservations with no fees or penalties. We are not accepting additional reservations in the campground for this season. Due to the reduction in showers in Beechwood, feel free to use showers in Pines or Cedar if the lines are too long at middle Beechwood.

We wish that this project hadn't played out the way it did, but it did, and we hope that you understand that we're trying to make the best of a bad situation.

We're sorry.



The Beechwood toilet/shower buildings were both slated to be replaced this past fall and winter.

Ludington's Winter Wonderland

Winter is a wonderful time to experience the park's beauty and recreational opportunities. Wildlife congregate along the Big Sable River, ice mounds form on the Lake Michigan shoreline and sunsets come early. There are many activities to participate in during the winter and the park's warming shelter is a great place to relax once you get back out of the woods. Check out these opportunities to enjoy Michigan's unsung season.

GUIDED SNOWSHOEING

Each weekend, the park interpreter guides visitors through the snowy forests and dunes along

the Lake Michigan shoreline. Afternoon and evening hikes are available, so come prepared with a headlamp if you plan on joining an evening hike. Complimentary snowshoes are provided.

LANTERN LIT TRAIL

On select nights, the park lights over 75 kerosene lanterns and invites snowshoers and skiers to enjoy a self-guided tour along a mile long trail. Fires are maintained at two locations along the trail and hot beverages are available to help keep visitors warm as they chat with park staff. Complimentary snowshoes are available on a first

come, first served basis.

SNOWSHOEING

One of the great things about snowshoeing is that you don't need trails or special events to lead you to a destination; you can go anywhere! The over 5,000 acres of Ludington State Park are perfect for snowshoe exploration. Wander through tranquil forest or over windswept dunes and enjoy the winter splendor of Ludington State Park.

CROSS COUNTRY SKIING

Each winter, some of the park's hiking trails are prepared for cross country skiing. Park staff groom

and set tracks to create nearly 10 miles of ski trails. The Logging Trail heads north out of the Pines Campground through a hardwood forest, while the trails south of the Big Sable River take skiers through rolling dunes and jack pine barrens. For the more adventurous, back country skiing knows no bounds.

BIRD WATCHING

You might not think of bird watching as a winter activity, but with some of the only open water in Mason County during the winter, the Big Sable River is a great place to watch waterfowl. Buffleheads, goldeneyes, scoters, and

bald eagles can all be seen in the park. Make sure to stop by the park's warming shelter to view the songbird feeder and record your sightings.

WINTER CAMPING

Getting a campsite at Ludington can be difficult during the summer months, but during the winter, you can almost have the place to yourself. Plowed campsites in Cedar are available for visitors, as are the park's three mini-cabins. Water and electricity are available in Cedar, but restroom amenities are limited to vault toilets.





Ray's Marina

& Campground

CAMPSITES & BOAT SLIPS AVAILABLE

231-425-8719

22'x55' Cement Pads • 50 Amp Service
Full City Water & Sewer Hook Up • Wi-Fi
Direct Lake Michigan Access Through PM Lake

We Love Families & Fishing!

HOME OF THE
STATE
RECORD
SALMON



801 S. WASHINGTON AVE., LUDINGTON

Big Sable Point Lighthouse



The Big Sable Lighthouse opens on May 10th for the 2020 season. Hours of operation are 10 am to 5 pm Tuesday through Friday. Big Sable will once again be closed on Monday's to give our staff and volunteers a chance to clean and freshen up the visitor's area's providing a clean and safe environment for all of our guests.

The Big Sable Lighthouse has been and still is a major working lighthouse on the shores of Lake Michigan for 155 years. Built in 1867 located inside of the Ludington State Park this is a must see for area visitors and State Park Campers.

Big Sable is managed by the Sable Point Lighthouse Keepers Association. SPLKA's mission is to preserve, promote and educate the public and make our lighthouses accessible. SPLKA provides volunteers who welcome you in, educate those visiting with a historic video and recall tales of the past lighthouse keepers. They also sell tower climbs and sell gift shop items to help fund SPLKA's preservation efforts of this iconic lighthouse station. The top of the tower offers the spectacular views of Lake Michigan and the Ludington State Park.

For those who desire a ride out to Big Sable, SPLKA hosts six bus days, when for a small fee, we offer round trip transportation to the lighthouse form inside of the State Park. These dates are June 25, July 14th and 28th, August 11 and 25 and September 24th. Bus run from 12 noon to 5pm each day. Bus days at Big Sable also feature free family friendly music or entertainment from 1 pm to 3 pm on the grounds for all to enjoy.

Admission prices to climb the tower are \$8.00 for adults and \$5.00 for students 17 and under. For more information, visit the SPLKA web site at www.splka.org.

GREAT FOOD *and friendly people*

IT'S
Time
TO DRINK
Beer AND
RELAX

**A FAMILY
TRADITION**



SPORTSMAN'S

A FAMILY TRADITION FOR OVER 60 YEARS

111 W. LUDINGTON AVE. | LUDINGTON, MICHIGAN | (231) 843-2138

WWW.TAKEOUTLUDINGTON.COM

**MICHIGAN CRAFTED BEER,
WINE, AND SPIRITS**



109 W. LUDINGTON AVE. | MITTENBAR.COM

Lake Michigan water safety

Each year, Ludington State Park's visitors are drawn to the coastal dunes and sandy beaches of Lake Michigan. On a hot summer day, there is nothing better than jumping into this wonderful, unsalted sea to cool off.

The big lake can be dangerous. Conditions can change with little notice. Throughout the day, all summer, park staff monitors the lake conditions and fly flags indicating the swimming hazard.

These flags are located at the park entrance and on the beach side of the Lake Michigan beach house.

The park's beaches do not have life-guards and all visitors swim at their own risk; however, rescue throw buoys and life jackets are located at points along the designated swim beach in the event of an emergency.

A limited number of loaner life jackets are also available for use by visitors.

Days when waves are large can be fun, but they come with the possibility of long-shore or rip currents being present.

Before entering the water, visitors should learn how to react to getting caught in one of these currents. Signs located along the

IF CAUGHT IN A RIP CURRENT

STAY CALM: Don't panic. Focus on breathing and keeping your head above water.

SWIM TO the side, parallel to shore, then back to the shore: If tired, switch between swimming and floating until you reach shore.

IF IN danger: Face the shore and call for help.

IF SOMEONE else is caught in a rip current, call 911 and use the rescue equipment to assist them. Wear a life jacket if you must enter the water.

beach and at life-saving equipment kiosks explain the best methods for getting out of rip or long-shore current. See sidebar for more details.

To learn more about Great Lakes beach safety, visit www.dangerouscurrents.org, and to learn the latest beach forecast for Ludington State Park, visit the beach forecast page of the Grand Rapids National Weather Service Office.

Have an enjoyable and safe beach season.



Stay Safe

Attention: Flag Warning System

There are dangerous currents at this beach, and fatalities have occurred.



Red = Stop.

Stay on the beach and out of the water.



Yellow = Caution.

Watch for dangerous currents and high waves.

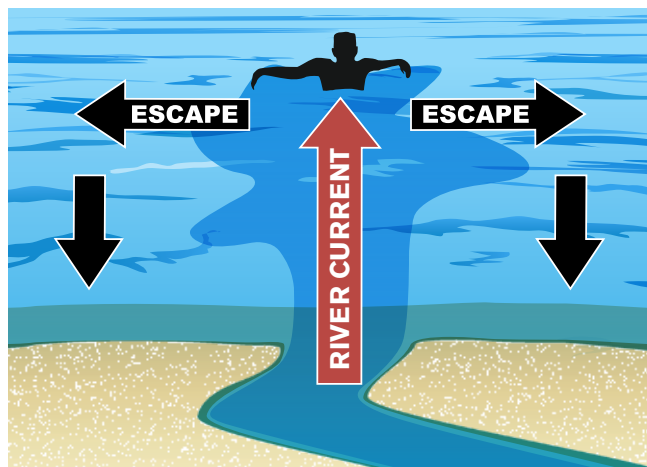


Green = Go.

But stay aware of changing conditions.

- A red flag means that there is a high risk of drowning.
- Swimmers: Stay away from piers and other structures.
- Even an Olympic swimmer couldn't win a race with a dangerous current.
- Absence of flags does not assure safe waters.

Beware of Strong River Outlet Current



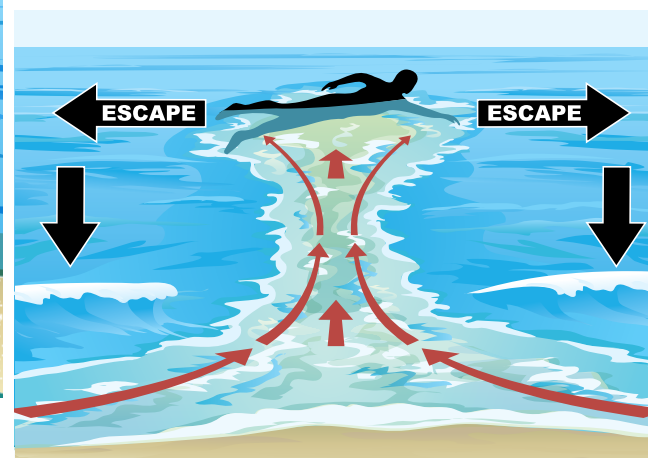
Caution, fatalities have occurred

If trapped in a dangerous current:

- Swim to the side, out of the current, and then to shore.
- If in danger, call for someone to throw a life ring or anything that floats.

Avoid Dangerous Areas:

- Stay in designated swim areas.
- Avoid swimming near piers and breakwalls. Many fatalities have occurred.



If trapped in a dangerous current:

- Swim to the side, out of the current, and then to shore.
- If in danger, call for someone to throw a life ring or anything that floats.

Historic timeline of Ludington State Park

Much has happened over the past 300 years on the lands that are now Ludington State Park. Native Americans lived in this area prior to the arrival of European fur traders and missionaries who explored this area in

the late 1600s and early 1700s. Once the area became settled, lumber barons sought out the large timber that grew in the park, leading in turn to the creation of a small community, a lifesaving station and a lighthouse.

The park that you now visit has seen a long list of colorful characters and interesting history. If you'd like to learn more, please join our park interpreter for a guided hike through the history of Ludington State Park.

1,600 years ago —

The surface of the Great Lakes dropped over 30 feet due to lack of glacial runoff and a new Great Lake drainage outlet opened up. Underwater sandbars and spits were exposed by the dropping water levels creating a land mass that cut off a section of Lake Michigan that today is known as Hamlin Lake.

1867 —

The new Grand Point au Sable Lighthouse was finished and the light illuminated. Today the lighthouse is known as the Big Sable Point Lighthouse.

1920 —

The U.S. Life Saving Service decided to close down the Life Saving Station that was located a mile south of the lighthouse. This station saved more than 334 sailors while losing only 5 sailors to the lake. Life-saving operations were consolidated at the City of Ludington Life Saving Station.

1968 —

U. S. Coast Guard automated the Big Sable Point Lighthouse light and the last Lighthouse Keeper left. The living quarters were shut down and boarded up.

1852 —

Lumber baron Charles Mears purchased the land on the lower Big Sable River and built a wooden dam and two sawmills on the river by 1856. He had the small Village of Hamlin built for his workers and their families.

1900-1905 —

Steel cladding was installed around the lighthouse tower to stop weathering of the soft brick.

1944 —

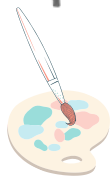
The older fog signal building at the Big Sable Point Lighthouse fell into Lake Michigan as the shoreline crept closer to the lighthouse.

2017 —

The 76-foot yacht named the Tica went aground on a sandbar just north of the lighthouse. Lake Michigan waves and storms broke up the boat before it could be raised and salvaged and the debris covered the beaches and dunes both north and south of the lighthouse. The Michigan DNR spent over \$100,000 to clean up the mess. The Tica was once used by Lucille Ball famous for her television show, "I Love Lucy."

EMBRACE YOUR CREATIVITY!

formerly known as
inspired parties
faire heart



Creative Classes & Kits
Local Artisan Products

Canvas painting, blacklight art,
wood signs & projects,
kids activities & more!

Faire Heart Studio

Drop-In Workshop
& Craft Studio
3754 N Jebavy Dr.
Ludington, MI 49431

Faire Heart Centre

Artisan Boutique
& Event Centre
3408 W US-10 Suite #2
Ludington, MI 49431

Faire Heart Downtown

Coming June 2022
inside "The Port"
222 W Ludington Ave.
Ludington, MI 49431

FaireHeartCo@gmail.com

FaireHeart.com

(231) 510-2528

DELICIOUS IS A BIG DEAL.

FAMILY SIZE
FOR \$6.99



DELIVERY AVAILABLE
TO THE STATE PARK
(MEET AT THE GATE)



Hungry Howie's
FLAVORED CRUST PIZZA

www.hungryhowies.com
(231) 843-6363

PRICES AND DEALS SUBJECT
TO CHANGE WITHOUT NOTICE

MEAL DEALS
FLAVOR FANATICS WELCOME

FLAVOR THAT FITS ANY BUDGET

\$6.99 Sm. 2-topping pizza



\$11.99

Lg. 2-topping Round or Square Pizza



\$17.99

2 med. 1-topping pizzas and a Howie Bread® or 2 liter Pepsi®



\$22.99

2 lg. 1-topping pizzas and Howie Bread® with dipping sauce



**WE ARE GLAD YOU ARE HERE, AND INVITE
YOU TO JOIN US AT ONE OF OUR MANY
EVENTS THIS SUMMER**

8-10PM

SUNSET BEACH

BONFIRES -

STEARNS PARK BEACH

JUNE 23

JULY 28

AUGUST 25

FOR MORE INFO ON THESE EVENTS AND OTHERS, VISIT:

PURELUDINGTON.COM