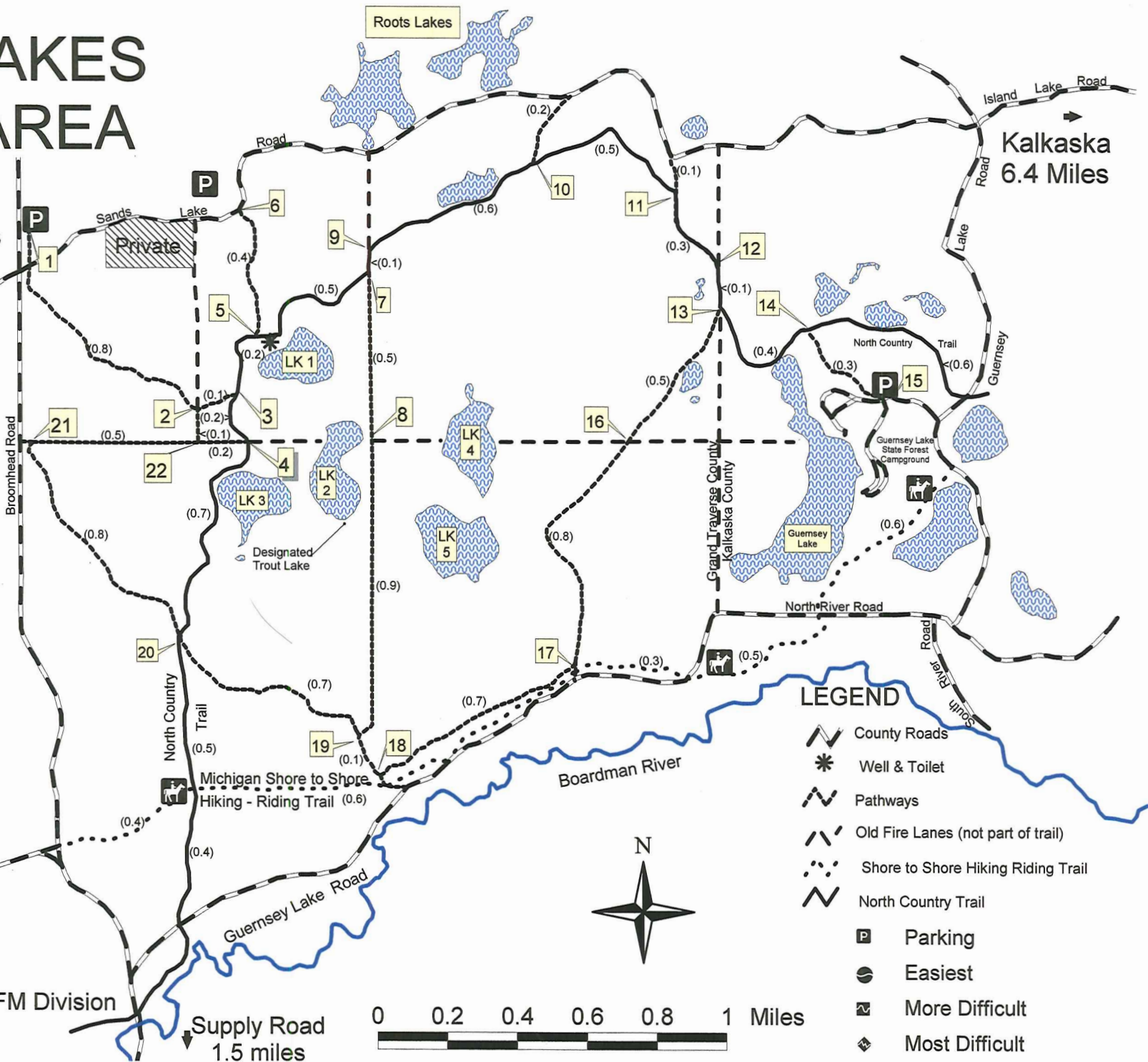


# SAND LAKES QUIET AREA

M-72  
4 miles

Kalkaska  
6.4 Miles

Trail Segment	Miles	Difficulty Rating
1-2	0.8	⬛
2-3	0.1	⬛
2-22	0.1	⬛
3-4	0.1	⬛
3-5	0.2	⬛
4-20	0.7	⬛
4-22	0.2	⬛
5-6	0.4	⬛
5-7	0.5	⬛
7-8	0.5	⬛
7-9	0.5	⬛
8-19	0.9	⬛
9-10	0.9	⬛
10-11	0.5	⬛
11-12	0.3	⬛
12-13	0.1	⬛
13-14	0.4	⬛
13-16	0.5	⬛
14-15	0.3	⬛
16-17	0.8	⬛
17-18	0.7	⬛
18-19	0.1	⬛
19-20	0.7	⬛
20-21	0.7	⬛
21-22	0.5	⬛

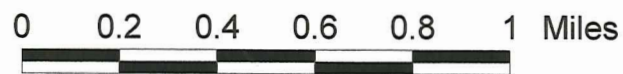


**LEGEND**

- County Roads
- Well & Toilet
- Pathways
- Old Fire Lanes (not part of trail)
- Shore to Shore Hiking Riding Trail
- North Country Trail
- Parking
- Easiest
- More Difficult
- Most Difficult



DNR FMFM Division



Supply Road  
1.5 miles