



# Compartment Review Presentation

Newberry Forest Management Unit

Compartment 42130

Entry Year 2018

Acreage: 6,730

County Luce

Management Area: Tahquamenon Basin Wetlands

---

**Revision Date:** 2016-08-22

**Stand Examiner:** Amy Douglass

**Legal Description:**

T46N R08W Sections 2, 10, 12-15, 21-29, 32-36

**Identified Planning Goals:**

Wildlife, fisheries along with some timber production is the main uses of this area. The goal is to maintain a healthy, sustainable forest ecosystem with special emphasis on unique forest communities and wildlife habitat.

**Soil and topography:**

The compartment is mostly flat with large, wet/acidic peatlands. The wetland soils are a complex of Carbondale/Lupton/Tawas soils and Dawson/Greenwood/Loxley soils with areas of Dorval muck, Markey mucky peat and Hendrie mucky peat. The forested cover types in the lowland muck/peat soils are typically marsh and treed bogs of suppressed spruce, tamarack and cedar. There are some areas of mostly level upland soil types scattered throughout the compartment. They are mostly a complex of Hendrie-Annianias complex or Auger-Annianias silt loams with some small narrow ridges of Crosswell sands. The forested cover types in these soils are mostly a mix of white pine, hemlock, spruce, balsam, aspen, red maple, yellow birch, white birch, and cedar. The upland areas are difficult to access due to the surrounding wetlands.

**Ownership Patterns, Development, and Land Use in and Around the Compartment:**

This compartment is split by private ownership; namely the Toonerville Trolley/Tahquamenon Boat Service, as well as other large ownership. There are generally large private parcels that lie north, northeast and northwest of the compartment. State land is scattered amongst private land in the northern third of the compartment area. State lands abut to the immediate east, south and west; with a small scattering of private 20's, 40 and 120 acres adjacent in these areas.

The Toonerville Trolley is operated within the boundaries of this compartment, mostly on the private land. There are a few cabins/camps on the private land within the boundaries of this compartment accessed mostly by boat and the Toonerville Trolley line. Much of this compartment has avoided development due to its remoteness and lowland nature.

**Unique Natural Features:**

None noted. There is potential for many plant and animal threatened and endangered species associated with bog types and waterways within this compartment.

**Archeological, Historical, and Cultural Features:**

None noted within the compartment, but the Betty B Landing is listed on adjacent private land. This is currently the site of where the Toonerville Trolley line ends and the Tahquamenon River Boat Tour begins.

**Special Management Designations or Considerations:**

None noted.

**Watershed and Fisheries Considerations:**

Fisheries Values: Good-Excellent

Fisheries Concerns: The Hendrie River (lower) is located within this compartment, while the East Branch Sage and Tahquamenon rivers skirt the western border. All three rivers provide valuable habitat for game species of the Tahquamenon River as well as nursery habitat for juvenile forage species. Site conditions are identified for many stands in this compartment. All proposed treatments are not in proximity to any of the rivers, so Fisheries Division has no concerns at this time.

**Wildlife Habitat Considerations:**

Compartment 130 lies in eastern Luce county in the Seney Sand Lake Plain ecological sub-subsection subsection and the Tahquamenon River Basin Wetlands Management Area where black bear, gray jay, snowshoe hare and white-tailed deer are listed featured species. The compartment is dominated by treed bogs and marsh with stands of spruce and tamarack on the drier ground. Forested stands are small and have low diversity. The Tahquamenon river and west branch of the Sage river make up the western border of the compartment and the Hendrie river runs along the eastern border. Parts of

the compartment lie in the Sage River deer yard which supports high numbers of deer during winter months.

Minimal harvesting is scheduled but conifers will be retained in aspen final harvests and cedar and hemlock will be retained in deer yard areas of the compartment. Travel corridors will be protected to preserve wetland wildlife values and habitats. Wildlife species potentially using this compartment include white-tailed deer, black bear, moose, wolves, coyote, and sharp-tailed grouse.

### **Mineral Resource and Development Concerns and/or Restrictions**

Surface sediments consist of peat and muck and lacustrine clay, silt, sand & gravel. There is insufficient data to determine the glacial drift thickness. The Ordovician Big Hill Dolomite, Stonington Formation, and Utica Shale subcrop below the glacial drift. The Big Hill and Stonington could be used for stone. A gravel pit is located in Section 5 and in Section 17 of the adjacent township to the east, and there appears to be some sand and gravel potential in the southern portion of the compartment. However, the majority of the compartment is identified as wetlands. There is no economic oil and gas production in the UP and there is no known metallic mineral potential in this area.

### **Vehicle Access:**

County Road 381 ends at the southeast boundary of this compartment at the Toonerville Trolley parking lot. That is as close as any vehicle will normally get to this compartment. There is about 5 miles of road in the middle of the compartment that has been used in the recent past to access land for timber removal. It is strictly a winter road and that requires a lot of work to get prepped for use. There is an abandoned railroad grade in the southeast portion of the compartment that has been used to gain access, again, mainly in the winter months. Other means of accessing this compartment is the Toonerville Trolley line, the Canadian National Railroad line or boat access via the Tahquamenon, Hendrie and Sage Rivers.

### **Survey Needs:**

Any area along private land would need survey corners if prescribed treatments are initiated.

The compartment has very little to offer for survey control. Chippewa County has remonumented the corners along the eastern compartment line and there are a few registered corners along the township line on the south boundary. There are a few old wooden posts in the compartment that are not registered but have been historically used to define property lines.

### **Recreational Facilities and Opportunities:**

Boating, fishing and hunting are accessible along the Tahquamenon, Hendrie and Sage Rivers. The Toonerville Trolley and Tahquamenon River Boat Tour are accessed on adjacent private lands.

### **Fire Protection:**

Due to the remote nature of this area, it would be very difficult to suppress a wildfire in this compartment. Access to some portions may be by boat, Toonerville Trolley or railroad

### **Additional Compartment Information:**

State game fund lands in Sections 2, 10, 12 (except NESE), 13 (except N1/2NW, and NWSW), 14 (except NESE) and 15 (except SWSW).

### **The following reports from the Inventory are attached:**

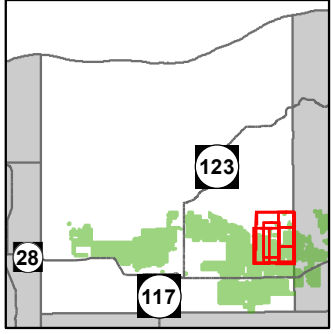
- Total Acres by Cover Type and Age Class**
- Cover Type by Harvest Method**
- Proposed Treatments – No Limiting Factors**
- Proposed Treatments – With Limiting Factors**
- Stand Details (Forested and Nonforested)**
- Dedicated and Proposed Special Conservation Areas**
- Site Condition Details**

### **The following information is displayed, where pertinent, on the attached compartment maps:**

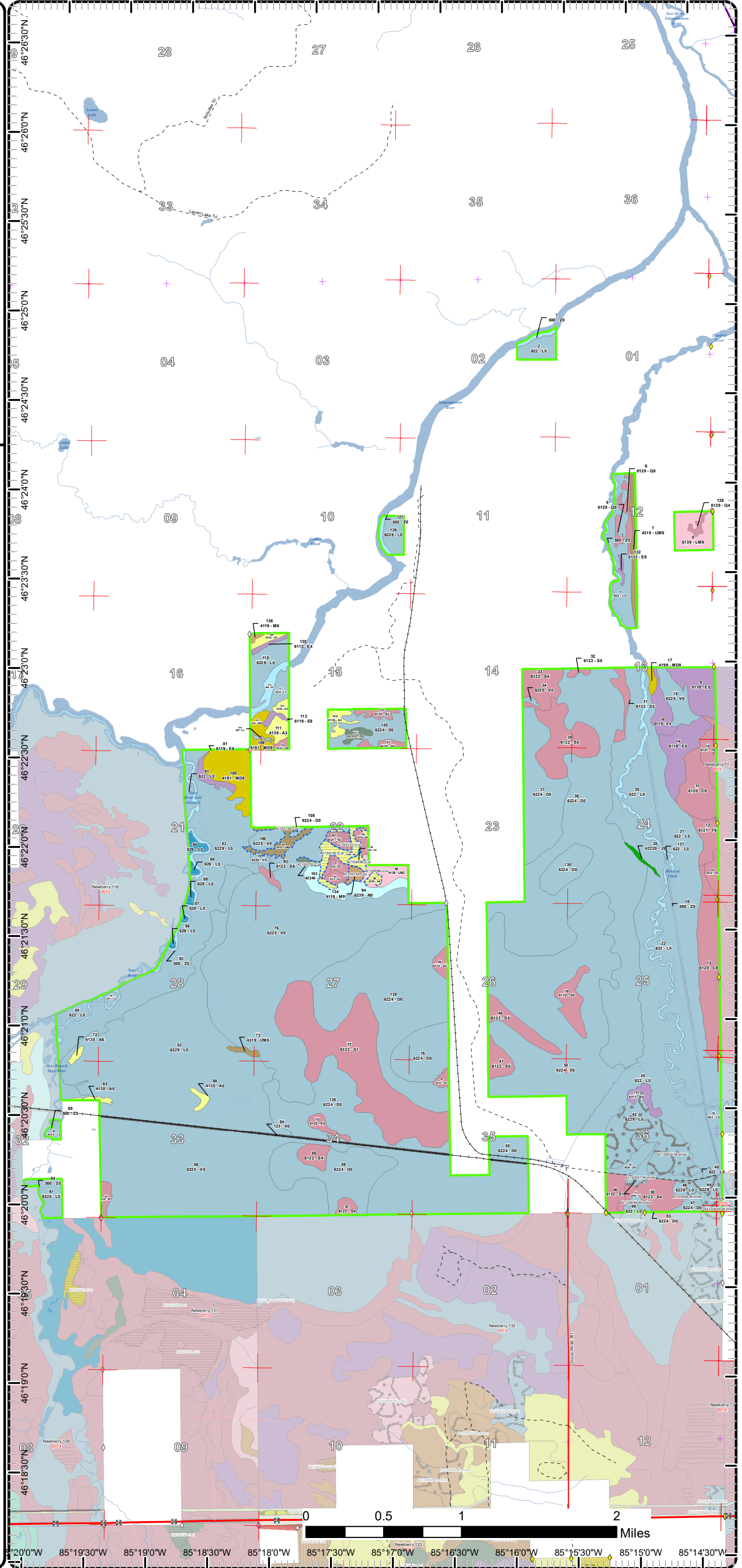
- Base feature information, stand boundaries, cover types, and numbers**
- Proposed treatments**
- Site condition boundaries**
- Details on the road access system**

# Cover Type & Treatments Map

Compartment: 130  
 T46NR08W Sec. 2,10,12-15  
 County: Luce  
 Unit: Newberry  
 Mgmt Area: Tahquamenon Basin  
 Wetlands  
 YOE: 2018  
 Acres: 6,730 GIS Calculated  
 Examiner: Amy Douglass  
 Map Revised: 10/27/2016  
 Map Phase: Post-Review

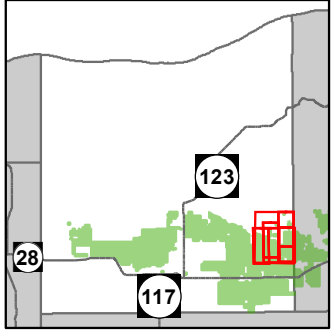


- + Miris Corners
- + Remonumented Section Corners
- ◆ Survey Grade GPS Corners
- ◇ Field Grade GPS Corners
- County Paved Roads
- Paved Roads
- - Poor Dirt Roads
- - - Trail (Non-Recreation)
- + Active Railroad
- Rivers
- Compartment Boundary
- Treatments with Site Conditions
- Clearcut (w/Reserves)
- Regeneration Survey
- Shelter Wood (w/Reserves)
- 411 - Northern Hardwood
- 413 - Aspen Types
- 419 - Mixed Upland Deciduous
- 422 - Natural Pines
- 423 - Other Upland Conifers
- 430 - Upland Mixed Forest
- 611 - Lowland Deciduous Forest
- 612 - Lowland Coniferous Forest
- 613 - Lowland Mixed Forest
- 123 - Other High Intensity Urban
- 500 - Water
- 622 - Lowland Shrub
- 623 - Emergent Wetland
- 629 - Mixed non-forested wetland
- Lakes

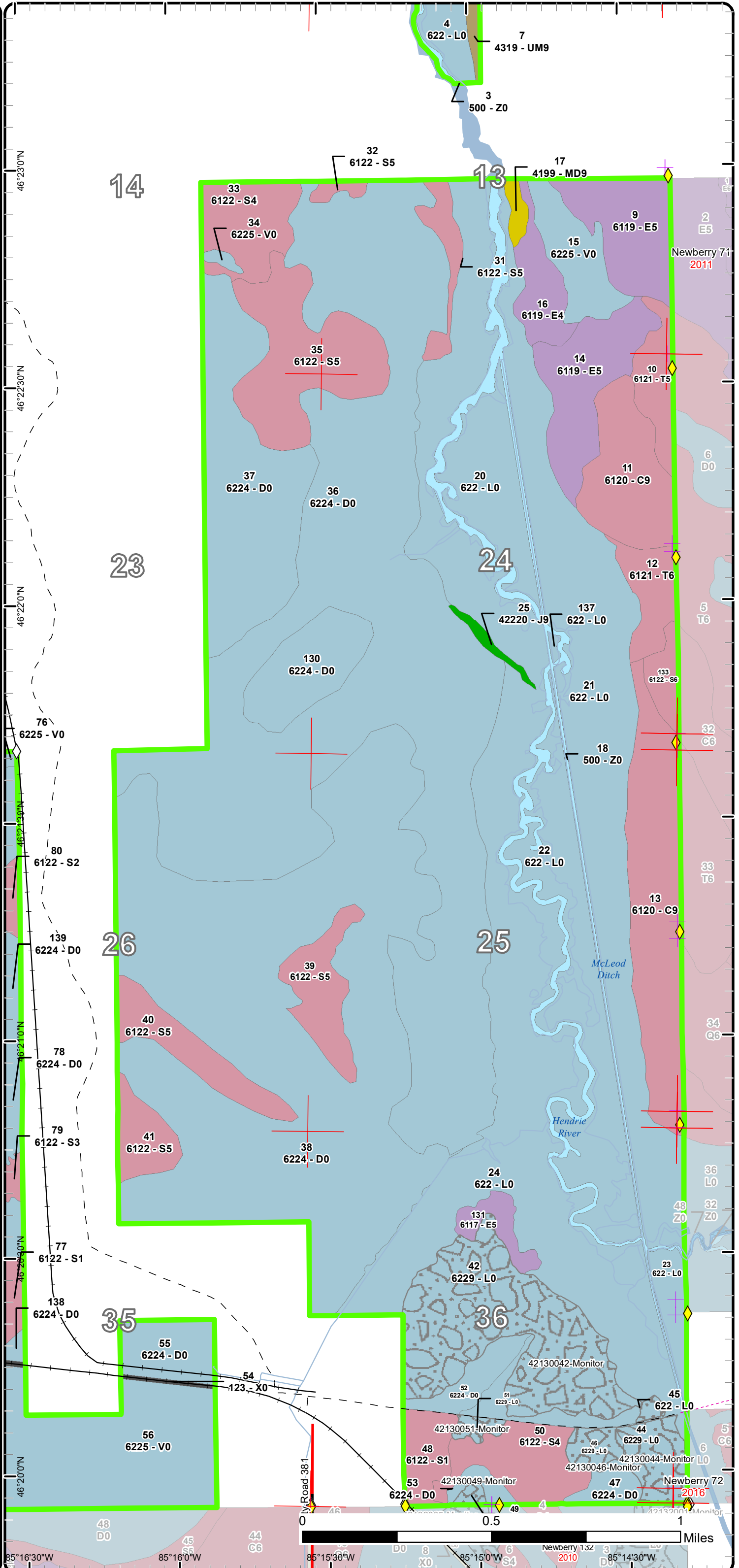


# Cover Type & Treatments Map

Compartment: 130  
 T46NR08W Sec. 2,10,12-15  
 County: Luce  
 Unit: Newberry  
 Mgmt Area: Tahquamenon Basin Wetlands  
 YOE: 2018  
 Acres: 6,730 GIS Calculated  
 Examiner: Amy Douglass  
 Map Revised: 10/27/2016  
 Map Phase: Post-Review

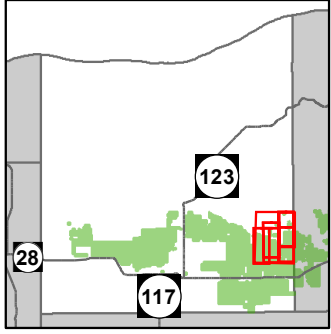


- Miris Corners
- + Remonumented Section Corners
- ◆ Survey Grade GPS Corners
- ◇ Field Grade GPS Corners
- County Paved Roads
- Paved Roads
- - Poor Dirt Roads
- - - Trail (Non-Recreation)
- + Active Railroad
- Rivers
- Compartment Boundary
- ▨ Regeneration Survey
- 419 - Mixed Upland Deciduous
- 422 - Natural Pines
- 430 - Upland Mixed Forest
- 611 - Lowland Deciduous Forest
- 612 - Lowland Coniferous Forest
- 123 - Other High Intensity Urban
- 500 - Water
- 622 - Lowland Shrub
- Lakes

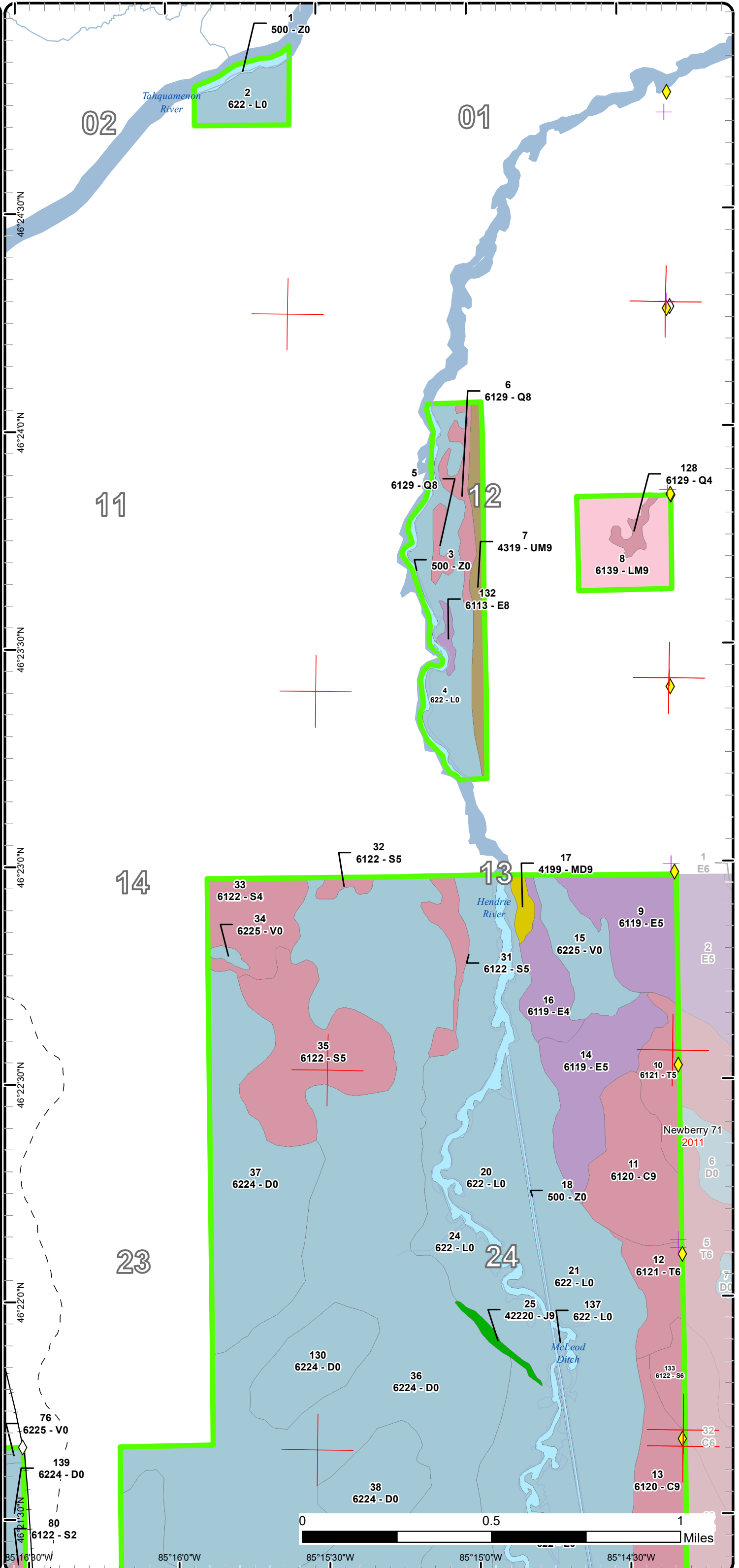


# Cover Type & Treatments Map

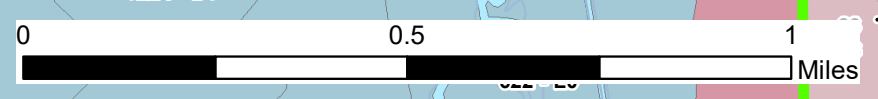
Compartment: 130  
 T46NR08W Sec. 2,10,12-15  
 County: Luce  
 Unit: Newberry  
 Mgmt Area: Tahquamenon Basin Wetlands  
 YOE: 2018  
 Acres: 6,730 GIS Calculated  
 Examiner: Amy Douglass  
 Map Revised: 10/27/2016  
 Map Phase: Post-Review



- Miris Corners
- Remonumented Section Corners
- ◆ Survey Grade GPS Corners
- ◇ Field Grade GPS Corners
- - Poor Dirt Roads
- Active Railroad
- Rivers
- ▭ Compartment Boundary
- 419 - Mixed Upland Deciduous
- 422 - Natural Pines
- 430 - Upland Mixed Forest
- 611 - Lowland Deciduous Forest
- 612 - Lowland Coniferous Forest
- 613 - Lowland Mixed Forest
- 500 - Water
- 622 - Lowland Shrub
- Lakes



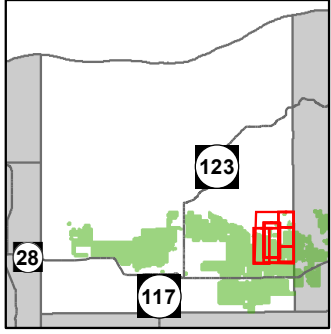
Newberry 71  
2011



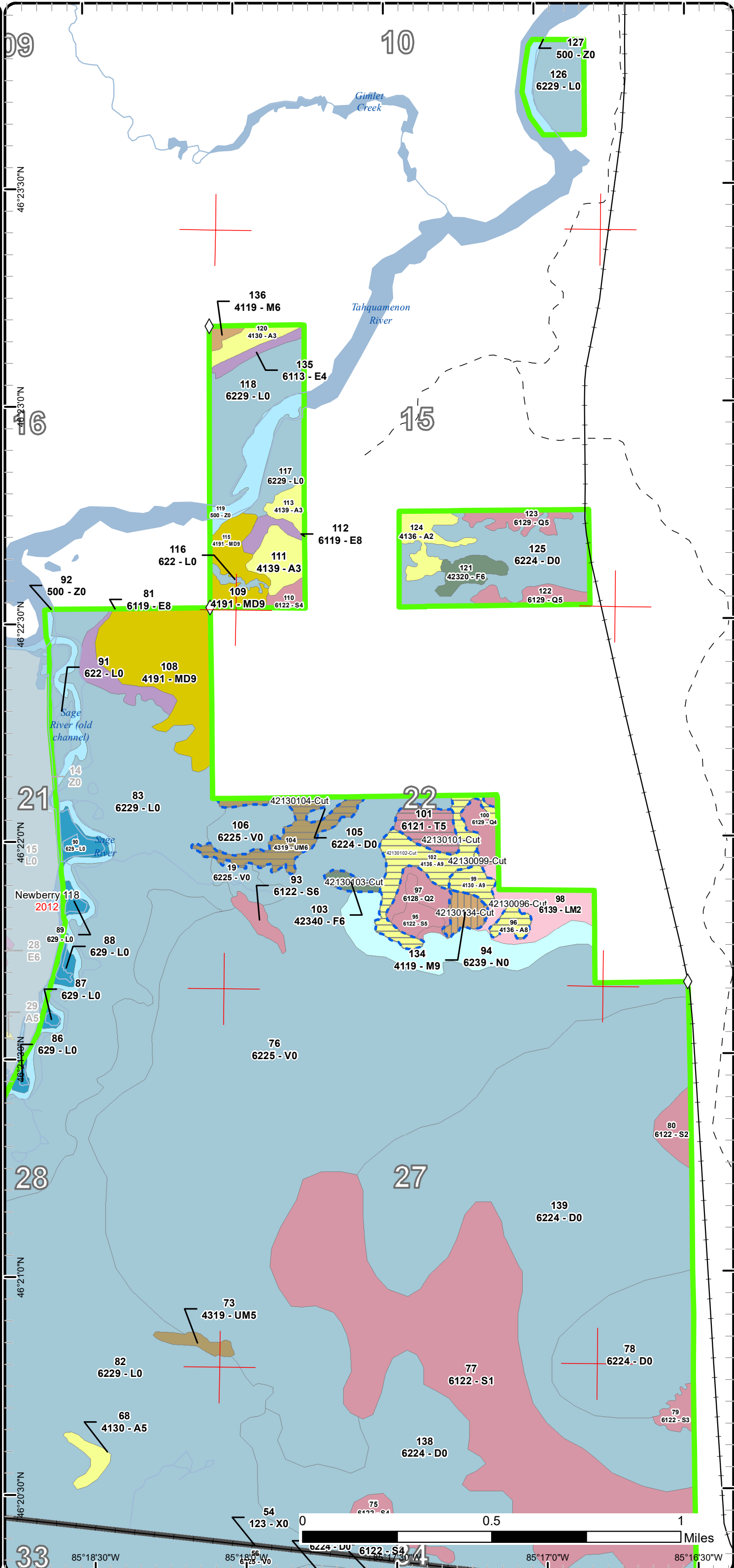
85°16'30"W 85°16'0"W 85°15'30"W 85°15'0"W 85°14'30"W

# Cover Type & Treatments Map

Compartment: 130  
 T46NR08W Sec. 2,10,12-15  
 County: Luce  
 Unit: Newberry  
 Mgmt Area: Tahquamenon Basin Wetlands  
 YOE: 2018  
 Acres: 6,730 GIS Calculated  
 Examiner: Amy Douglass  
 Map Revised: 10/27/2016  
 Map Phase: Post-Review



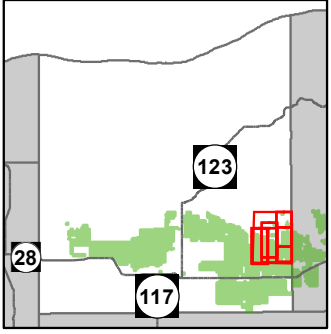
- Miris Corners
- ◇ Field Grade GPS Corners
- - Poor Dirt Roads
- Active Railroad
- Rivers
- Compartment Boundary
- Treatments with Site Conditions
- Clearcut (w/Reserves)
- Shelter Wood (w/Reserves)
- 411 - Northern Hardwood
- 413 - Aspen Types
- 419 - Mixed Upland Deciduous
- 423 - Other Upland Conifers
- 430 - Upland Mixed Forest
- 611 - Lowland Deciduous Forest
- 612 - Lowland Coniferous Forest
- 613 - Lowland Mixed Forest
- 123 - Other High Intensity Urban
- 500 - Water
- 622 - Lowland Shrub
- 623 - Emergent Wetland
- 629 - Mixed non-forested wetland
- Lakes



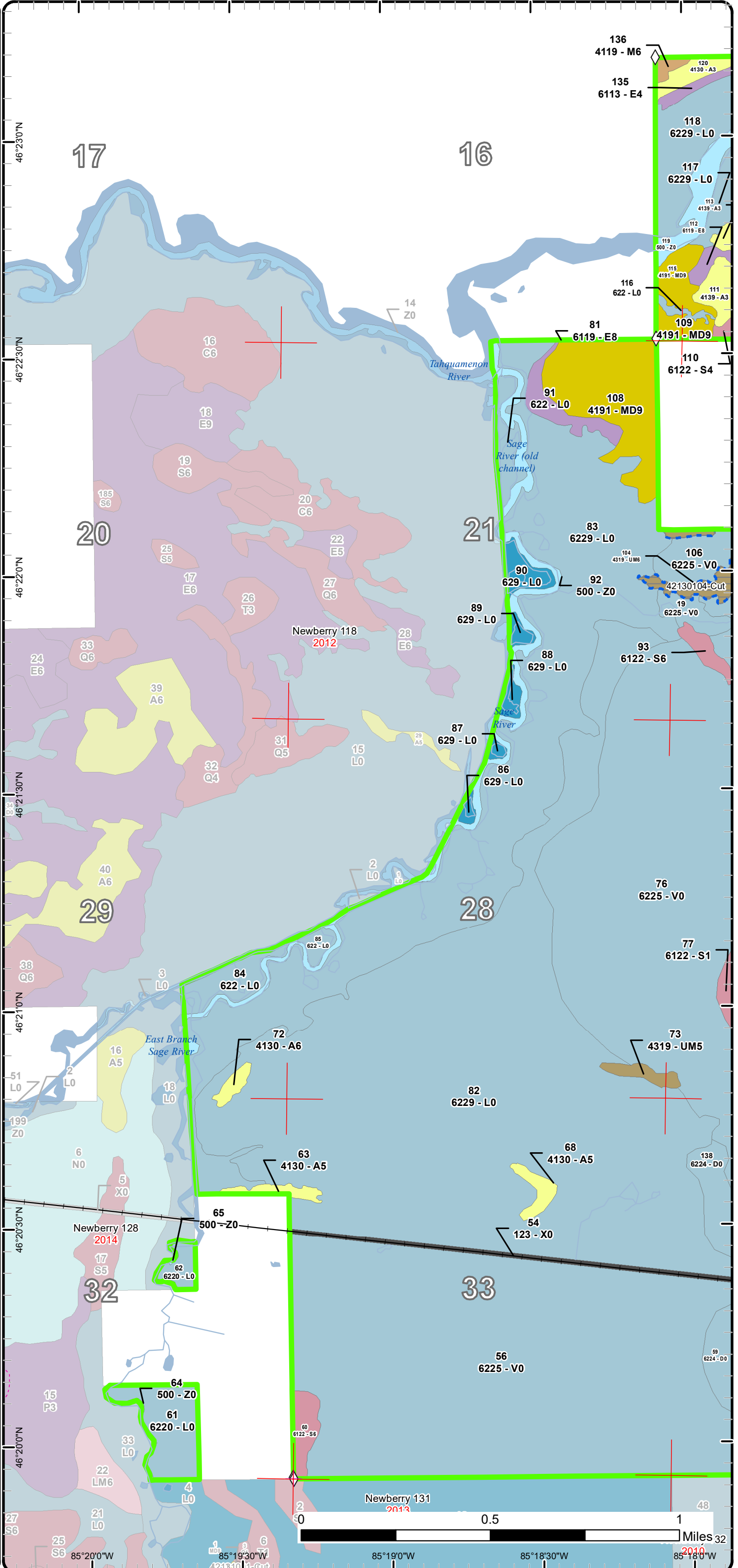
0 0.5 1 Miles

# Cover Type & Treatments Map

Compartment: 130  
 T46NR08W Sec. 2,10,12-15  
 County: Luce  
 Unit: Newberry  
 Mgmt Area: Tahquamenon Basin Wetlands  
 YOE: 2018  
 Acres: 6,730 GIS Calculated  
 Examiner: Amy Douglass  
 Map Revised: 10/27/2016  
 Map Phase: Post-Review

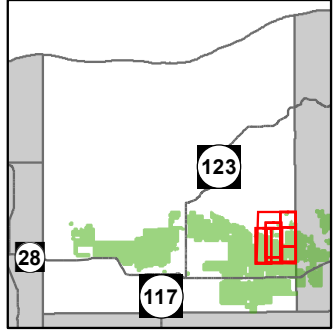


- Miris Corners
- Remonumented Section Corners
- ◊ Field Grade GPS Corners
- Active Railroad
- Rivers
- ▭ Compartment Boundary
- ▭ Treatments with Site Conditions
- ▭ Clearcut (w/Reserves)
- ▭ 411 - Northern Hardwood
- ▭ 413 - Aspen Types
- ▭ 419 - Mixed Upland Deciduous
- ▭ 430 - Upland Mixed Forest
- ▭ 611 - Lowland Deciduous Forest
- ▭ 612 - Lowland Coniferous Forest
- ▭ 123 - Other High Intensity Urban
- ▭ 500 - Water
- ▭ 622 - Lowland Shrub
- ▭ 629 - Mixed non-forested wetland
- ▭ Lakes

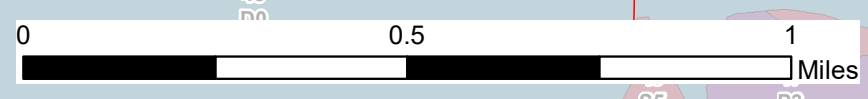
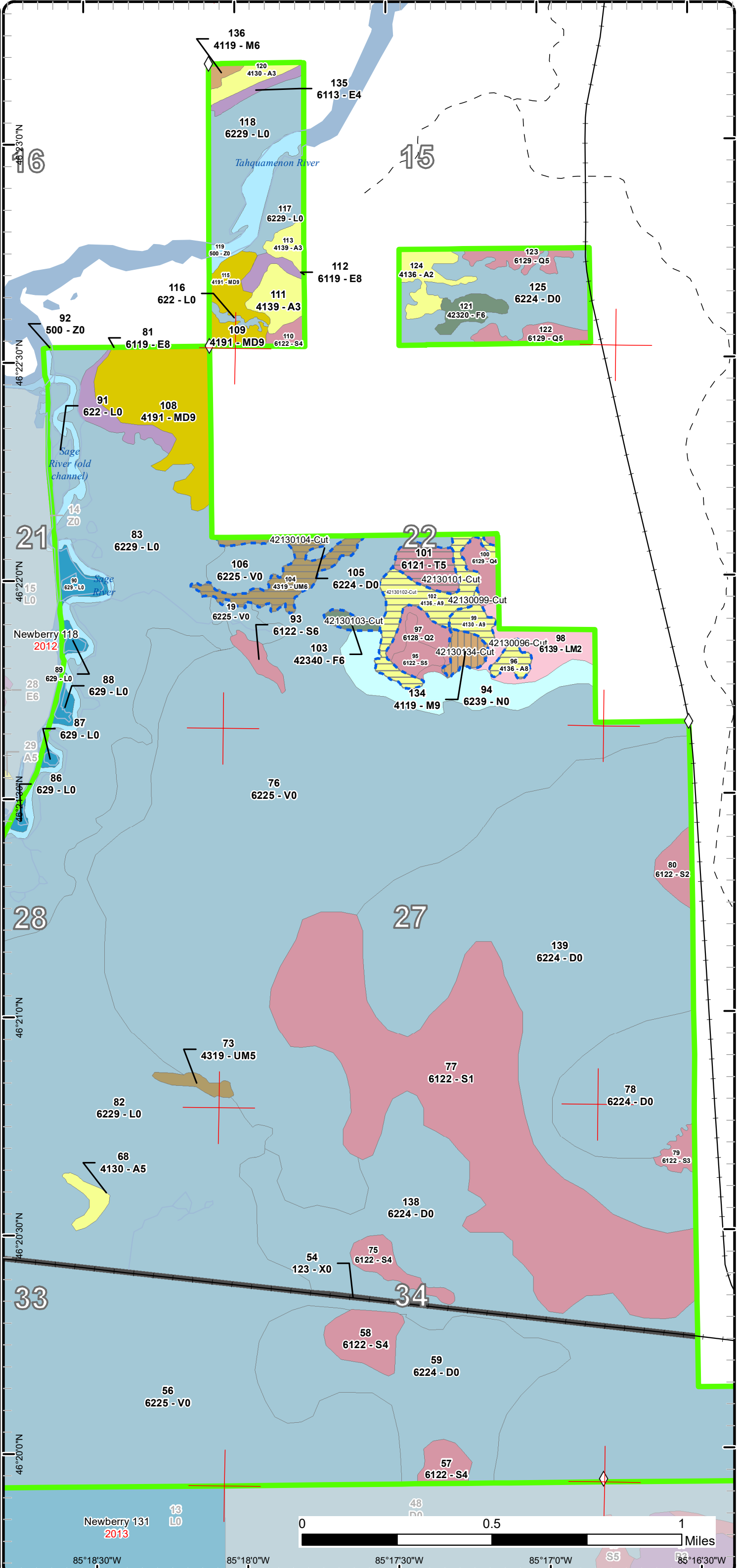


# Cover Type & Treatments Map

Compartment: 130  
 T46NR08W Sec. 2,10,12-15  
 County: Luce  
 Unit: Newberry  
 Mgmt Area: Tahquamenon Basin Wetlands  
 YOE: 2018  
 Acres: 6,730 GIS Calculated  
 Examiner: Amy Douglass  
 Map Revised: 10/27/2016  
 Map Phase: Post-Review



- Miris Corners
- ◇ Field Grade GPS Corners
- - Poor Dirt Roads
- + Active Railroad
- Rivers
- Compartment Boundary
- ▨ Treatments with Site Conditions
- ▨ Clearcut (w/Reserves)
- ▨ Shelter Wood (w/Reserves)
- 411 - Northern Hardwood
- 413 - Aspen Types
- 419 - Mixed Upland Deciduous
- 423 - Other Upland Conifers
- 430 - Upland Mixed Forest
- 611 - Lowland Deciduous Forest
- 612 - Lowland Coniferous Forest
- 613 - Lowland Mixed Forest
- 123 - Other High Intensity Urban
- 500 - Water
- 622 - Lowland Shrub
- 623 - Emergent Wetland
- 629 - Mixed non-forested wetland
- Lakes

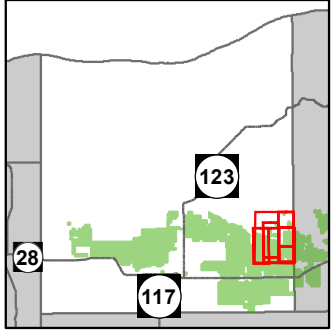


85°18'30"W 85°18'0"W 85°17'30"W 85°17'0"W 85°16'30"W

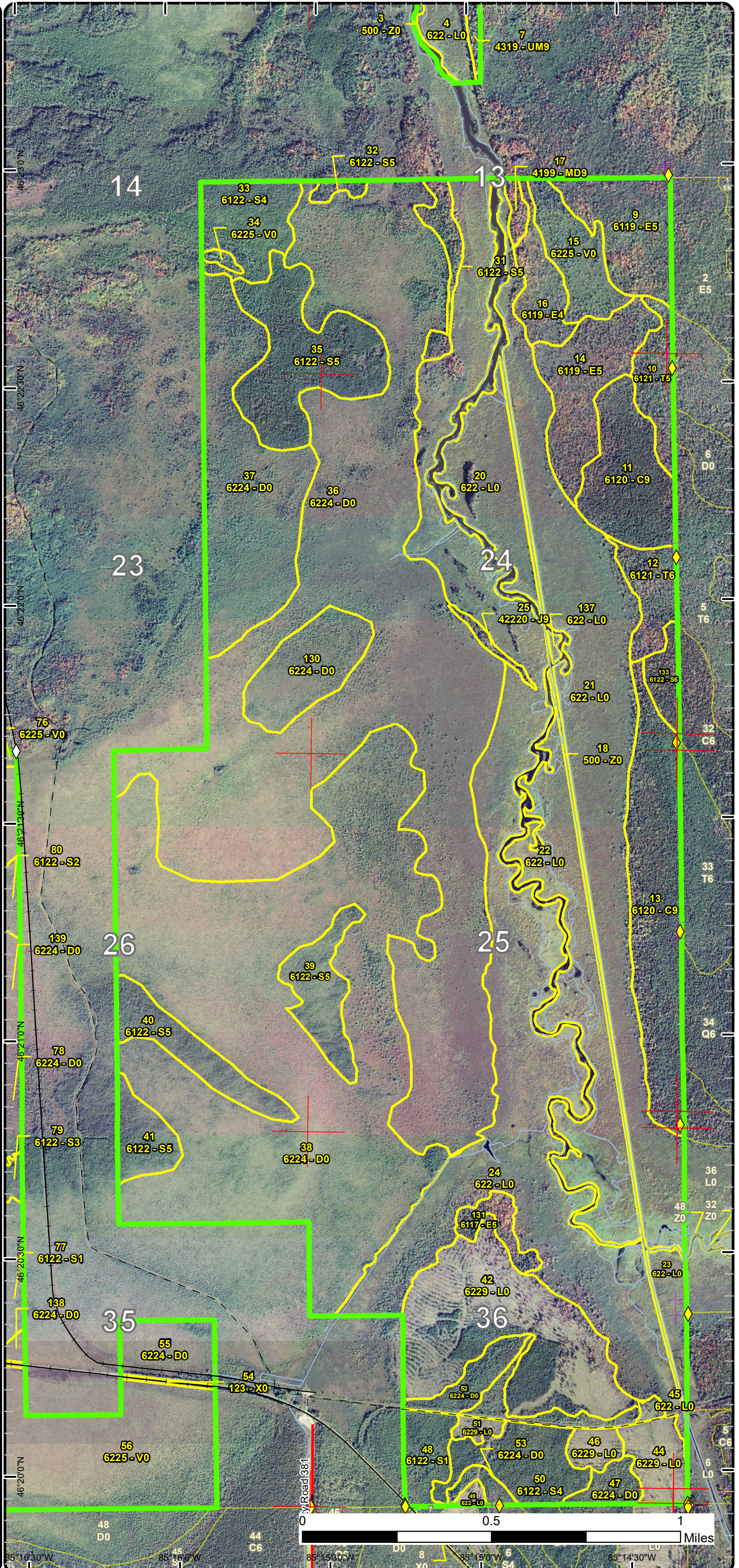


# Stand Boundary Map

Compartment: 130  
 T46NR08W Sec. 2,10,12-15  
 County: Luce  
 Unit: Newberry  
 Mgmt Area: Tahquamenon Basin Wetlands  
 YOE: 2018  
 Acres: 6,730 GIS Calculated  
 Examiner: Amy Douglass  
 Map Revised: 10/27/2016  
 Map Phase: Post-Review

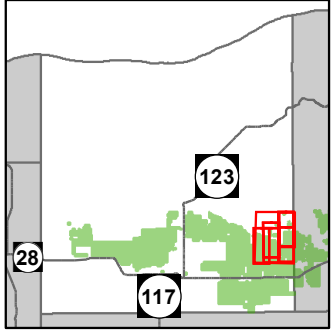


- Miris Corners
- + Remonumented Section Corners
- ◆ Survey Grade GPS Corners
- ◇ Field Grade GPS Corners
- County Paved Roads
- Paved Roads
- - Poor Dirt Roads
- - - Trail (Non-Recreation)
- + Active Railroad
- Rivers
- Compartment Boundary
- Stand Boundaries
- 419 - Mixed Upland Deciduous
- 422 - Natural Pines
- 430 - Upland Mixed Forest
- 611 - Lowland Deciduous Forest
- 612 - Lowland Coniferous Forest
- 123 - Other High Intensity Urban
- 500 - Water
- 622 - Lowland Shrub

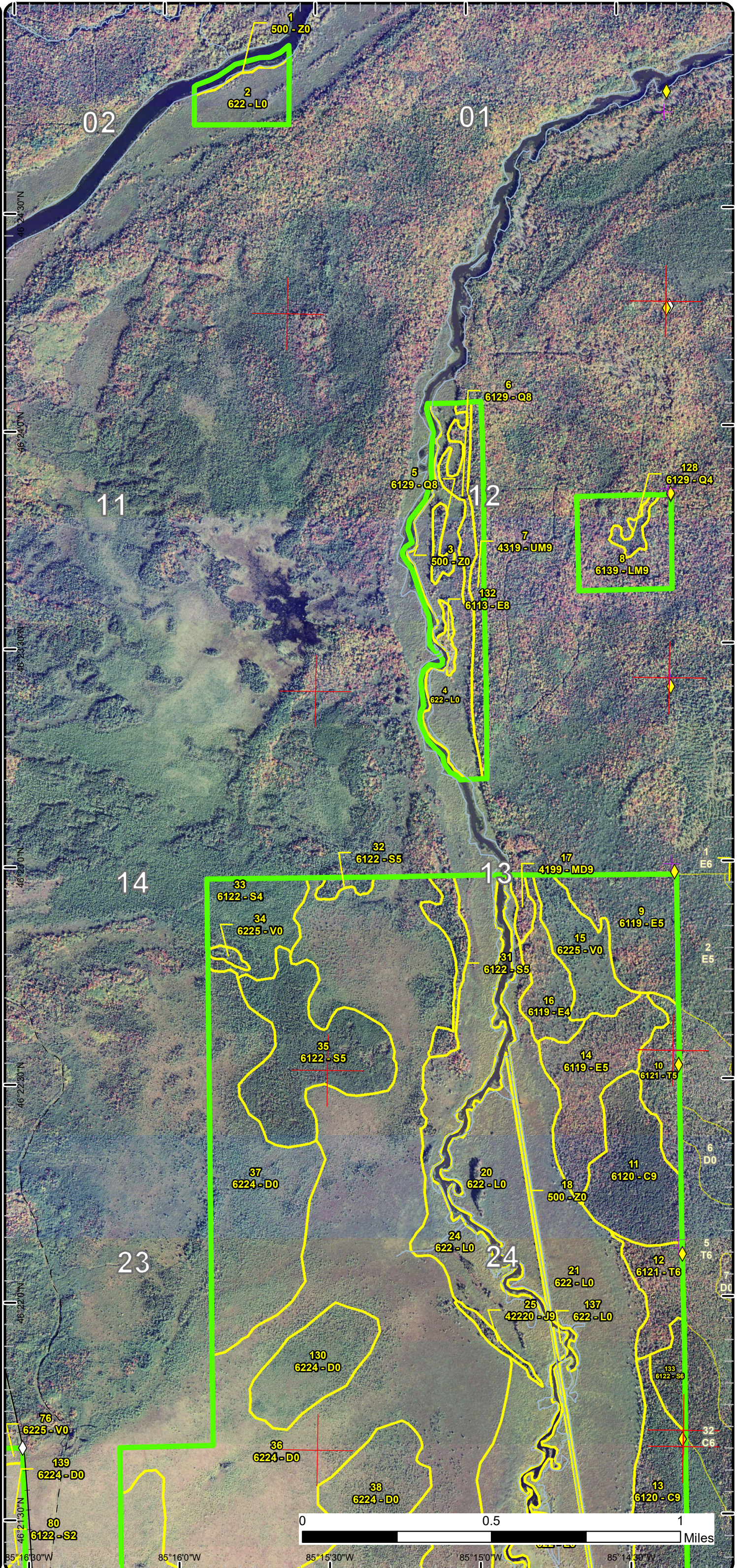


# Stand Boundary Map

Compartment: 130  
 T46NR08W Sec. 2,10,12-15  
 County: Luce  
 Unit: Newberry  
 Mgmt Area: Tahquamenon Basin Wetlands  
 YOE: 2018  
 Acres: 6,730 GIS Calculated  
 Examiner: Amy Douglass  
 Map Revised: 10/27/2016  
 Map Phase: Post-Review

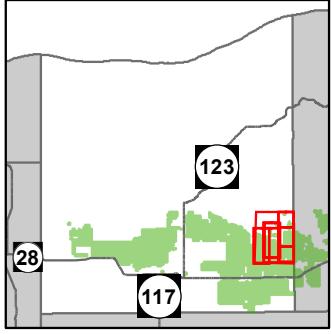


- Miris Corners
- + Remonumented Section Corners
- ◆ Survey Grade GPS Corners
- ◇ Field Grade GPS Corners
- Poor Dirt Roads
- Active Railroad
- Rivers
- Compartment Boundary
- Stand Boundaries
- 419 - Mixed Upland Deciduous
- 422 - Natural Pines
- 430 - Upland Mixed Forest
- 611 - Lowland Deciduous Forest
- 612 - Lowland Coniferous Forest
- 613 - Lowland Mixed Forest
- 500 - Water
- 622 - Lowland Shrub

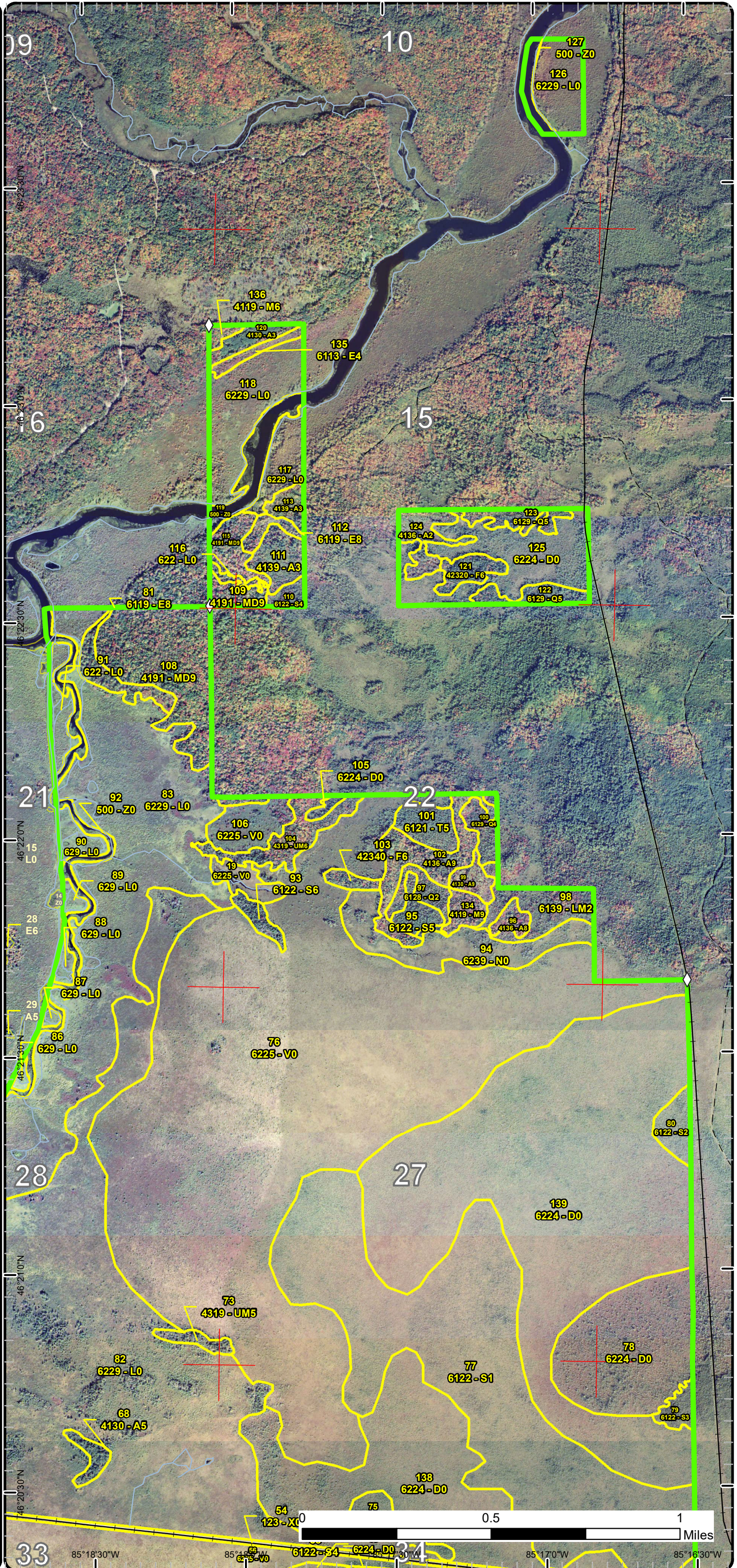


# Stand Boundary Map

Compartment: 130  
 T46NR08W Sec. 2,10,12-15  
 County: Luce  
 Unit: Newberry  
 Mgmt Area: Tahquamenon Basin Wetlands  
 YOE: 2018  
 Acres: 6,730 GIS Calculated  
 Examiner: Amy Douglass  
 Map Revised: 10/27/2016  
 Map Phase: Post-Review

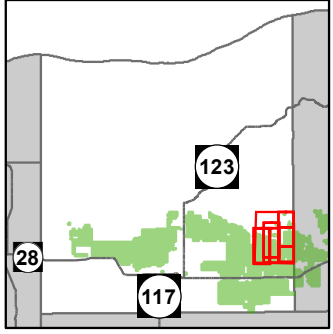


- Miris Corners
- ◇ Field Grade GPS Corners
- - Poor Dirt Roads
- Active Railroad
- Rivers
- Compartment Boundary
- Stand Boundaries
- 411 - Northern Hardwood
- 413 - Aspen Types
- 419 - Mixed Upland Deciduous
- 423 - Other Upland Conifers
- 430 - Upland Mixed Forest
- 611 - Lowland Deciduous Forest
- 612 - Lowland Coniferous Forest
- 613 - Lowland Mixed Forest
- 123 - Other High Intensity Urban
- 500 - Water
- 622 - Lowland Shrub
- 623 - Emergent Wetland
- 629 - Mixed non-forested wetland

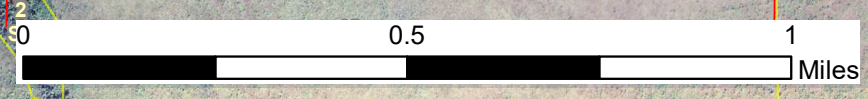
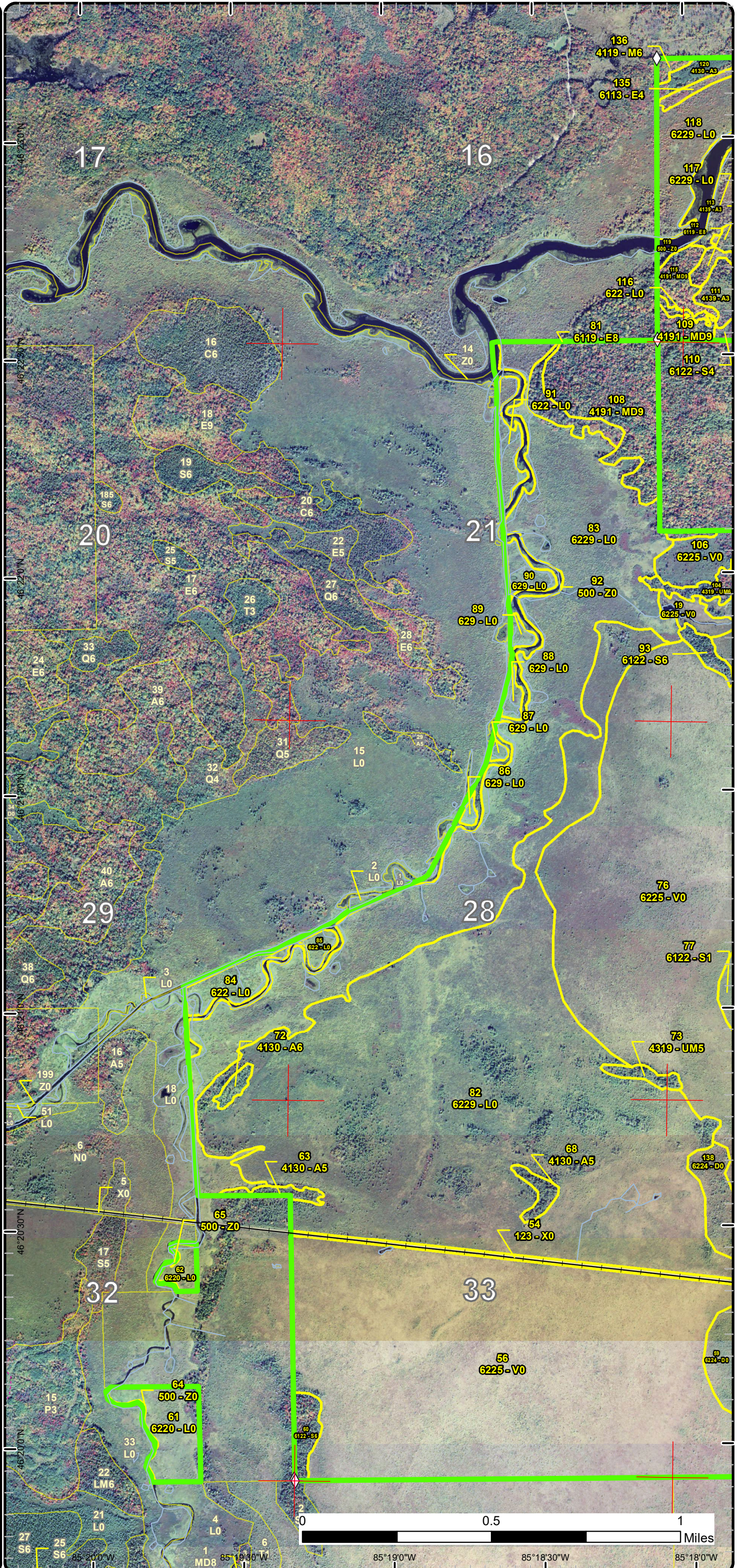


# Stand Boundary Map

Compartment: 130  
 T46NR08W Sec. 2,10,12-15  
 County: Luce  
 Unit: Newberry  
 Mgmt Area: Tahquamenon Basin Wetlands  
 YOE: 2018  
 Acres: 6,730 GIS Calculated  
 Examiner: Amy Douglass  
 Map Revised: 10/27/2016  
 Map Phase: Post-Review



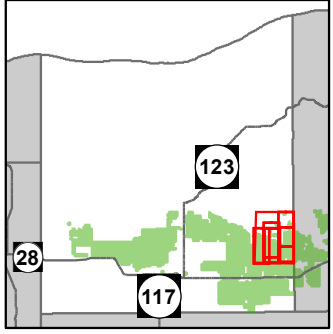
- Miris Corners
- + Remonumented Section Corners
- ◇ Field Grade GPS Corners
- Active Railroad
- Rivers
- Compartment Boundary
- Stand Boundaries
- 411 - Northern Hardwood
- 413 - Aspen Types
- 419 - Mixed Upland Deciduous
- 430 - Upland Mixed Forest
- 611 - Lowland Deciduous Forest
- 612 - Lowland Coniferous Forest
- 123 - Other High Intensity Urban
- 500 - Water
- 622 - Lowland Shrub
- 629 - Mixed non-forested wetland



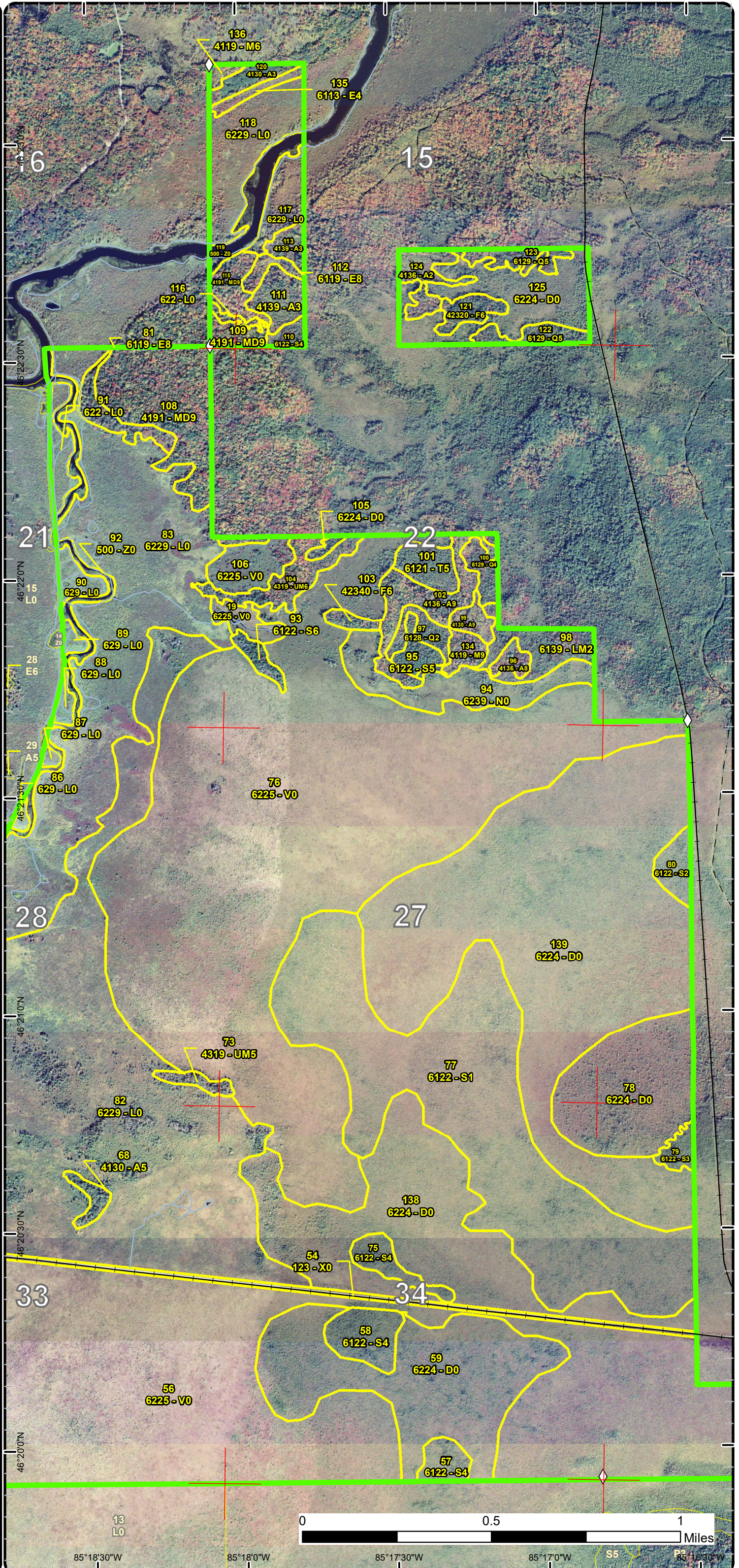
85°20'0"W      85°19'30"W      85°19'0"W      85°18'30"W      85°18'0"W

# Stand Boundary Map

Compartment: 130  
 T46NR08W Sec. 2,10,12-15  
 County: Luce  
 Unit: Newberry  
 Mgmt Area: Tahquamenon Basin Wetlands  
 YOE: 2018  
 Acres: 6,730 GIS Calculated  
 Examiner: Amy Douglass  
 Map Revised: 10/27/2016  
 Map Phase: Post-Review

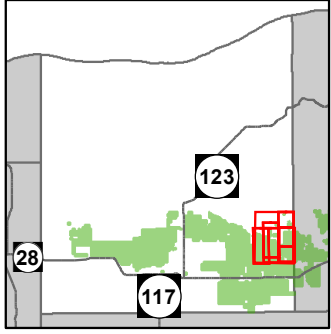


- Miris Corners
- ◇ Field Grade GPS Corners
- - Poor Dirt Roads
- Active Railroad
- Rivers
- Compartment Boundary
- Stand Boundaries
- 411 - Northern Hardwood
- 413 - Aspen Types
- 419 - Mixed Upland Deciduous
- 423 - Other Upland Conifers
- 430 - Upland Mixed Forest
- 611 - Lowland Deciduous Forest
- 612 - Lowland Coniferous Forest
- 613 - Lowland Mixed Forest
- 123 - Other High Intensity Urban
- 500 - Water
- 622 - Lowland Shrub
- 623 - Emergent Wetland
- 629 - Mixed non-forested wetland

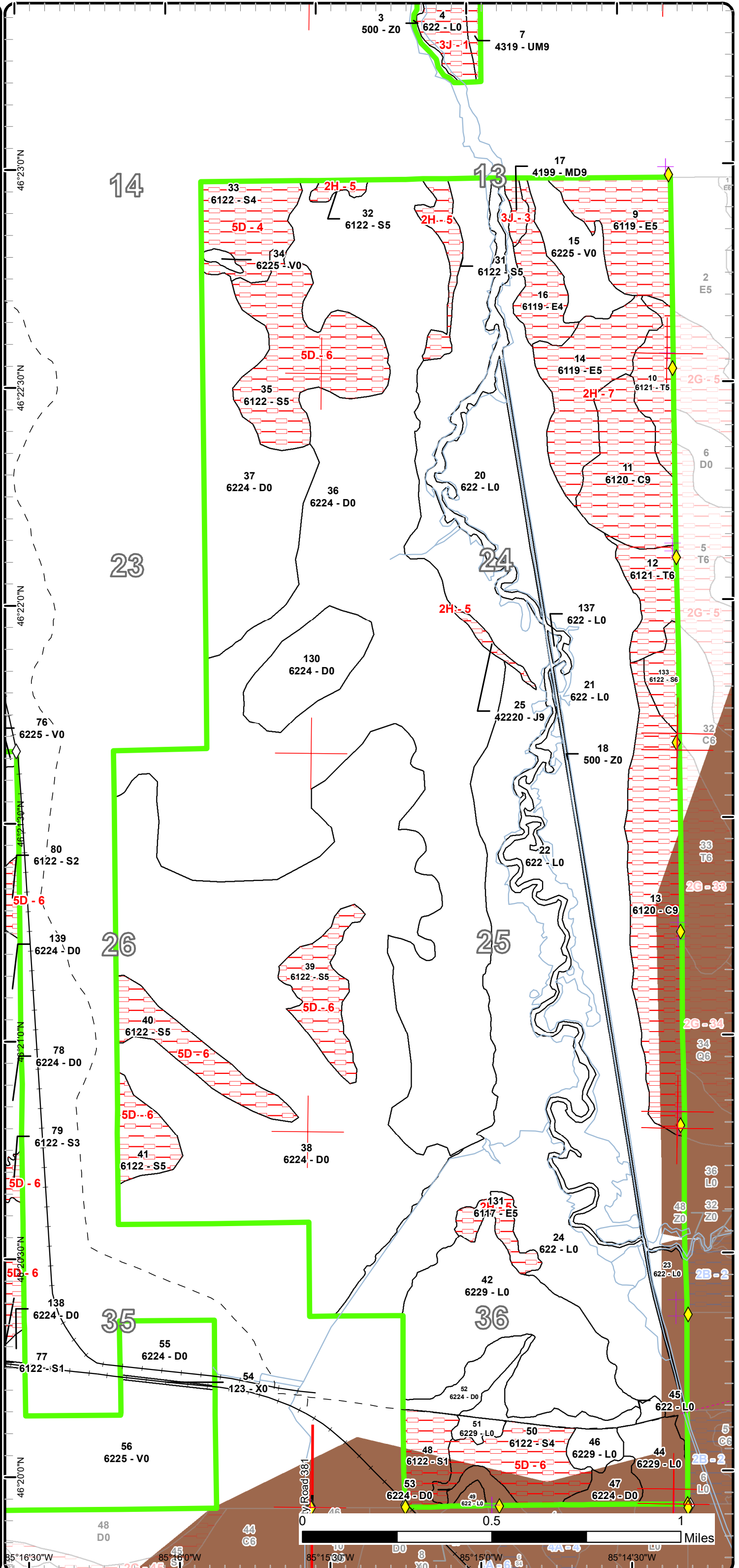


# Special Conservation Areas & Site Conditions Map

Compartment: 130  
 T46NR08W Sec. 2,10,12-15  
 County: Luce  
 Unit: Newberry  
 Mgmt Area: Tahquamenon Basin Wetlands  
 YOE: 2018  
 Acres: 6,730 GIS Calculated  
 Examiner: Amy Douglass  
 Map Revised: 10/27/2016  
 Map Phase: Post-Review

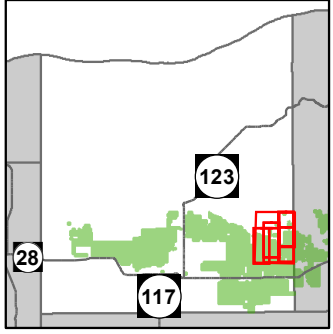


- Miris Corners
- + Remonumented Section Corners
- ◆ Survey Grade GPS Corners
- ◇ Field Grade GPS Corners
- County Paved Roads
- Paved Roads
- - Poor Dirt Roads
- - - Trail (Non-Recreation)
- + Active Railroad
- Rivers
- Compartment Boundary
- Unavailable
- 2H: Blocked by physical obstacle (e.g. upland stand in a lowland area)
- 3J: Water quality / BMPs (stream, river, or lake)
- 5D: Unproductive Forest Land
- Stand Boundaries
- Deer Winter Range

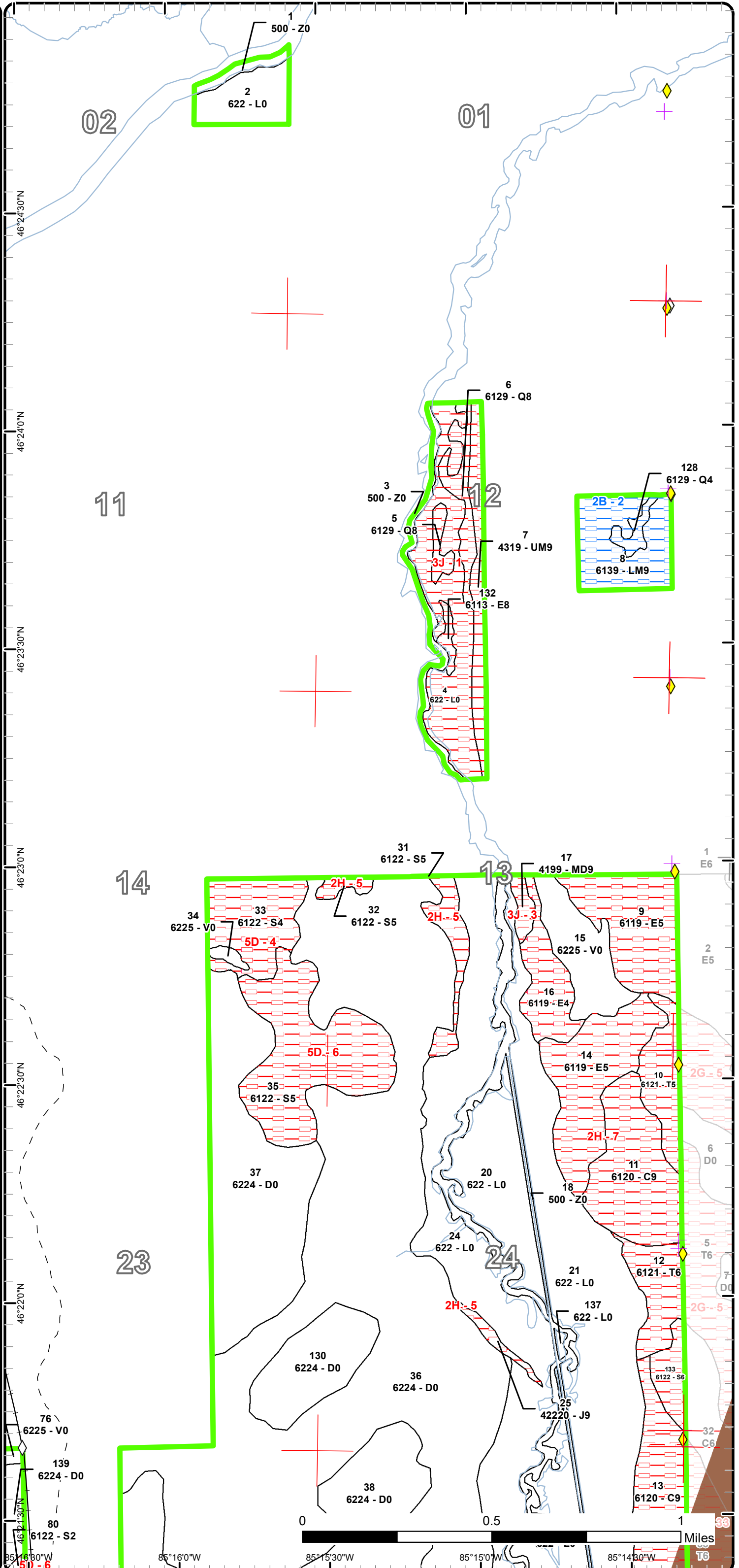


# Special Conservation Areas & Site Conditions Map

Compartment: 130  
 T46NR08W Sec. 2,10,12-15  
 County: Luce  
 Unit: Newberry  
 Mgmt Area: Tahquamenon Basin Wetlands  
 YOE: 2018  
 Acres: 6,730 GIS Calculated  
 Examiner: Amy Douglass  
 Map Revised: 10/27/2016  
 Map Phase: Post-Review

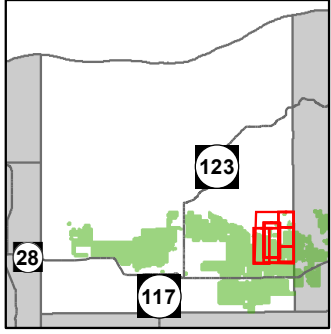


- Miris Corners
- ⊕ Remonumented Section Corners
- ◆ Survey Grade GPS Corners
- ◇ Field Grade GPS Corners
- - - Poor Dirt Roads
- Active Railroad
- Rivers
- ▭ Compartment Boundary
- ▭ Available w/ Constraints
- ▭ Unavailable
- 2B: Unknown if access through adjacent landowner(s) is possible
- 2H: Blocked by physical obstacle (e.g. upland stand in a lowland area)
- 3J: Water quality / BMPs (stream, river, or lake)
- 5D: Unproductive Forest Land
- ▭ Stand Boundaries
- ▭ Deer Winter Range

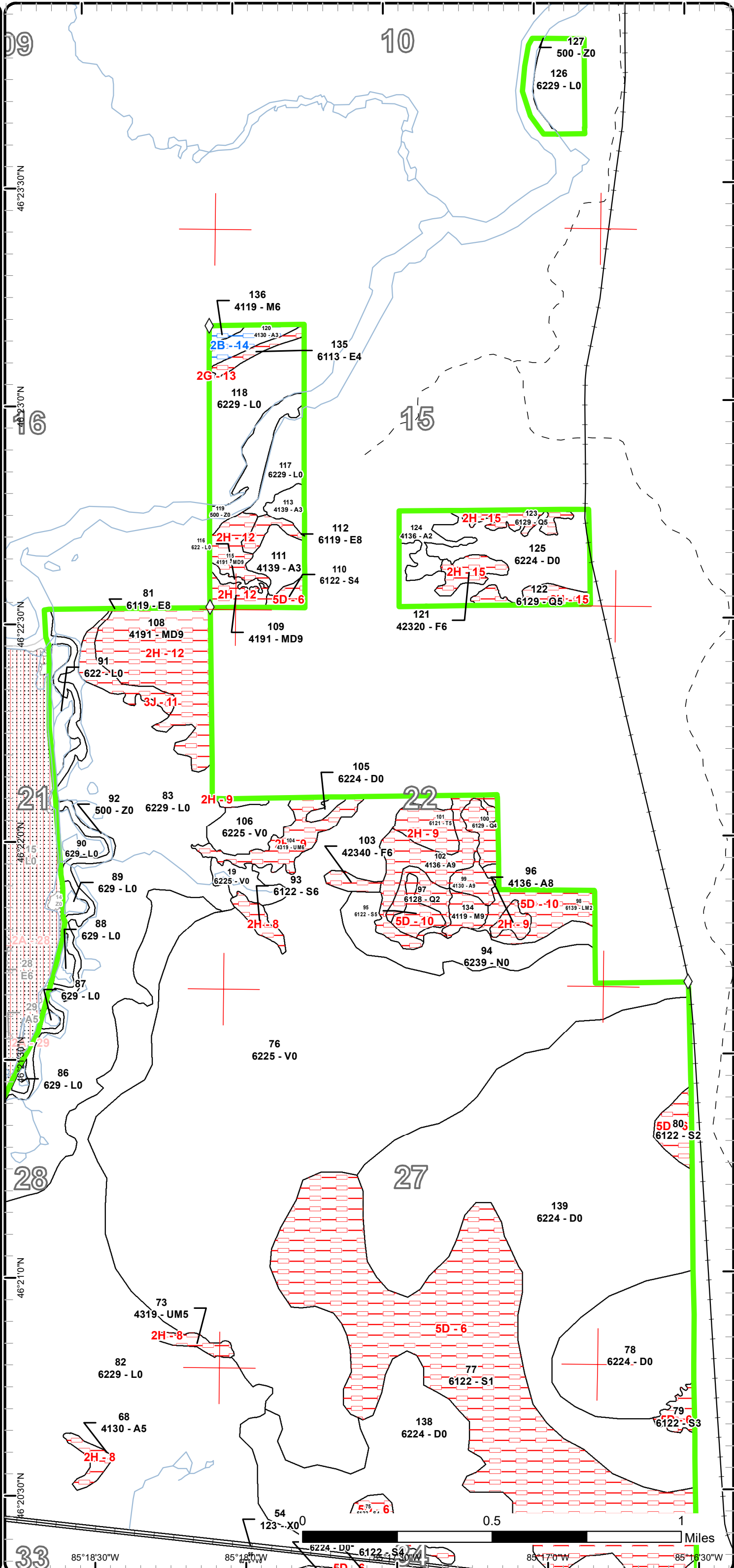


# Special Conservation Areas & Site Conditions Map

Compartment: 130  
 T46NR08W Sec. 2,10,12-15  
 County: Luce  
 Unit: Newberry  
 Mgmt Area: Tahquamenon Basin Wetlands  
 YOE: 2018  
 Acres: 6,730 GIS Calculated  
 Examiner: Amy Douglass  
 Map Revised: 10/27/2016  
 Map Phase: Post-Review



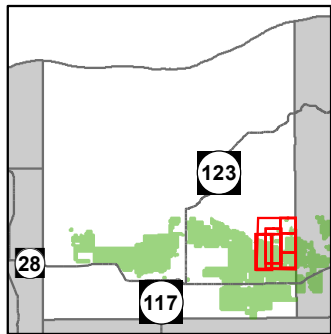
- Miris Corners
- ◇ Field Grade GPS Corners
- - Poor Dirt Roads
- Active Railroad
- Rivers
- Compartment Boundary
- Available w/ Constraints
- Unavailable
- 2B: Unknown if access through adjacent landowner(s) is possible
- 2G: Too wet (sensitive soils, does not include access issues)
- 2H: Blocked by physical obstacle (e.g. upland stand in a lowland area)
- 3J: Water quality / BMPs (stream, river, or lake)
- 5D: Unproductive Forest Land
- Stand Boundaries
- Other SCA (No Category Assigned)



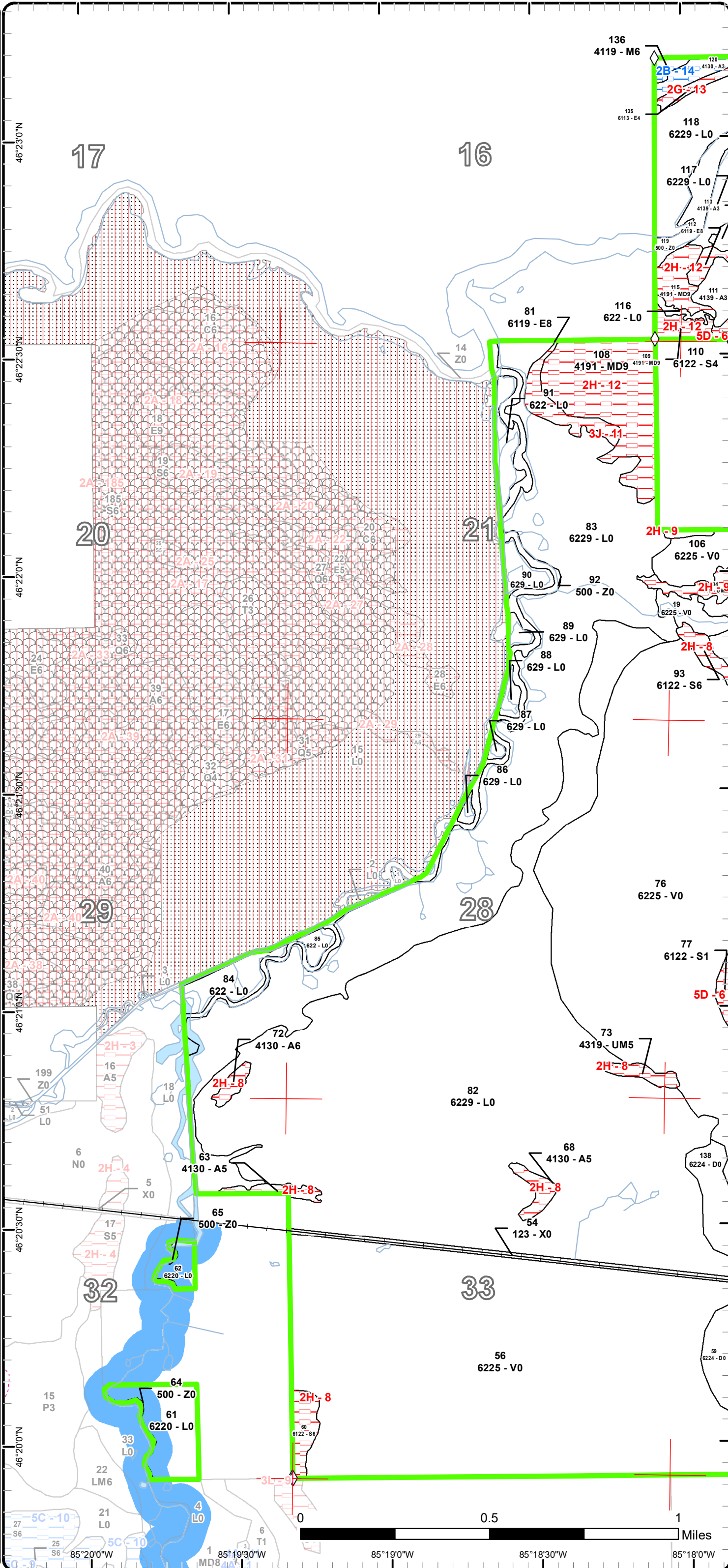


# Special Conservation Areas & Site Conditions Map

Compartment: 130  
 T46NR08W Sec. 2,10,12-15  
 County: Luce  
 Unit: Newberry  
 Mgmt Area: Tahquamenon Basin Wetlands  
 YOE: 2018  
 Acres: 6,730 GIS Calculated  
 Examiner: Amy Douglass  
 Map Revised: 10/27/2016  
 Map Phase: Post-Review

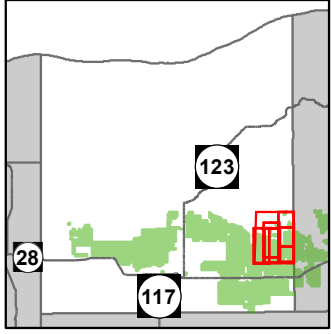


- Miris Corners
- + Remonumented Section Corners
- ◇ Field Grade GPS Corners
- Active Railroad
- Rivers
- Compartment Boundary
- Available w/ Constraints
- Unavailable
- 2B: Unknown if access through adjacent landowner(s) is possible
- 2G: Too wet (sensitive soils, does not include access issues)
- 2H: Blocked by physical obstacle (e.g. upland stand in a lowland area)
- 3J: Water quality / BMPs (stream, river, or lake)
- 5D: Unproductive Forest Land
- Stand Boundaries
- Cold Water Streams
- Cold Water Lakes
- High Priority Trout Stream Buffer
- Other SCA (No Category Assigned)

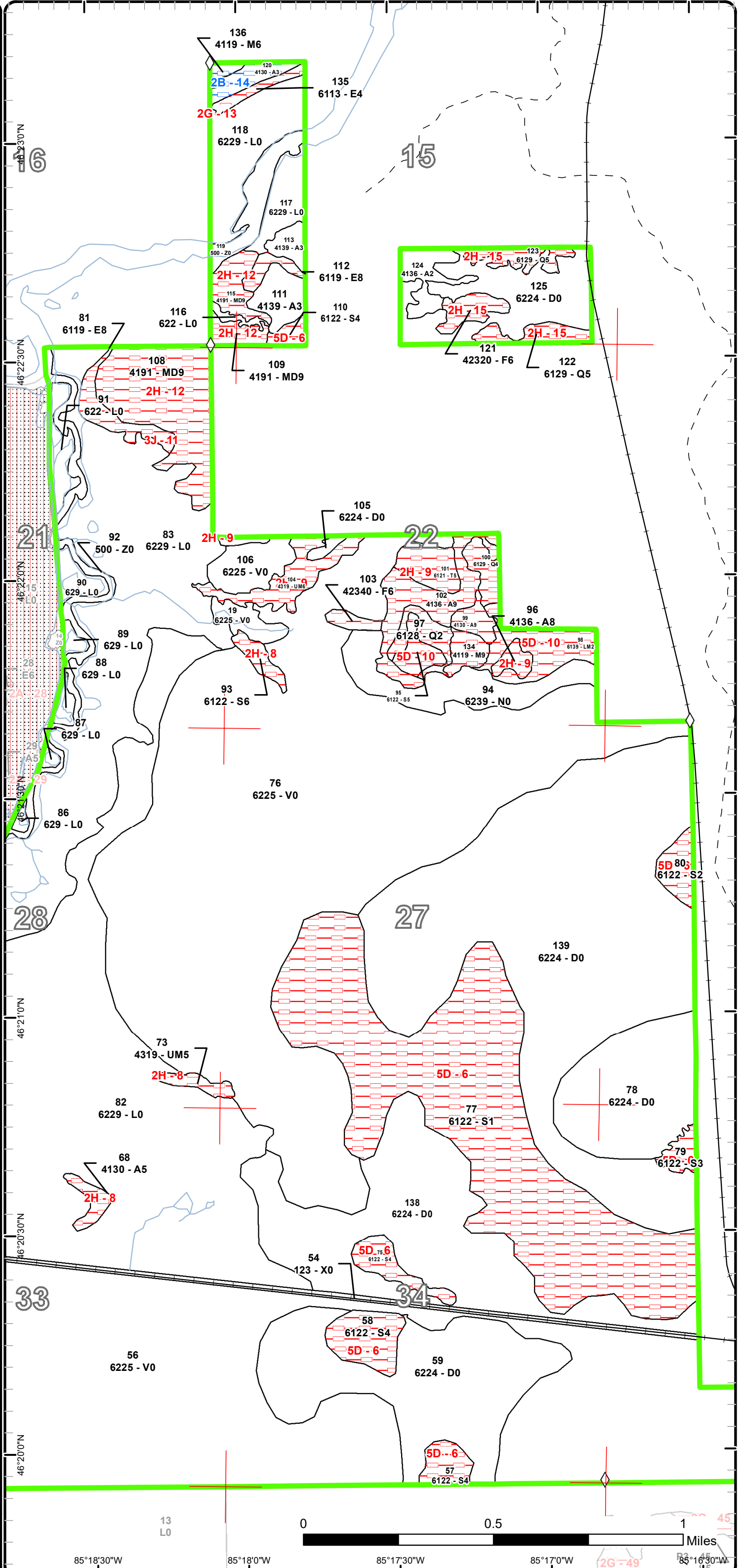


# Special Conservation Areas & Site Conditions Map

Compartment: 130  
 T46NR08W Sec. 2,10,12-15  
 County: Luce  
 Unit: Newberry  
 Mgmt Area: Tahquamenon Basin Wetlands  
 YOE: 2018  
 Acres: 6,730 GIS Calculated  
 Examiner: Amy Douglass  
 Map Revised: 10/27/2016  
 Map Phase: Post-Review



- Miris Corners
- ◇ Field Grade GPS Corners
- - Poor Dirt Roads
- Active Railroad
- Rivers
- Compartment Boundary
- Available w/ Constraints
- Unavailable
- 2B: Unknown if access through adjacent landowner(s) is possible
- 2G: Too wet (sensitive soils, does not include access issues)
- 2H: Blocked by physical obstacle (e.g. upland stand in a lowland area)
- 3J: Water quality / BMPs (stream, river, or lake)
- 5D: Unproductive Forest Land
- Stand Boundaries
- ▨ Other SCA (No Category Assigned)



Report 1 – Total Acres by Cover Type and Age Class



Age Class

	Non-Forest	0-9	10-19	20-29	30-39	40-49	50-59	60-69	70-79	80-89	90-99	100-109	110-119	120-129	130-139	140-149	150+	Uneven-Aged	Total
Aspen	0	0	34	0	0	0	0	0	0	40	0	0	0	0	0	0	0	4	78
Bog	1343	0	0	0	0	0	0	0	0	0	0	0	0	0	0	0	0	0	1343
Cedar	0	0	0	0	0	0	0	0	0	0	50	89	0	0	0	0	0	0	139
Jack Pine	0	0	0	0	0	0	0	0	0	4	0	0	0	0	0	0	0	0	4
Lowland Conifers	0	0	0	0	0	8	0	0	0	20	22	0	0	0	0	0	0	0	50
Lowland Deciduous	0	0	0	0	0	0	0	0	0	127	11	0	0	0	0	0	0	10	148
Lowland Mixed Forest	0	0	0	0	0	18	0	0	0	35	0	0	0	0	0	0	0	0	53
Lowland Shrub	1939	0	0	0	0	0	0	0	0	0	0	0	0	0	0	0	0	0	1939
Lowland Spruce/Fir	0	0	0	0	0	0	0	0	0	114	475	0	0	0	0	0	0	6	595
Marsh	35	0	0	0	0	0	0	0	0	0	0	0	0	0	0	0	0	0	34
Mixed Upland Deciduous	0	0	0	0	0	0	0	0	0	5	66	0	0	0	0	0	0	0	71
Northern Hardwood	0	0	0	0	0	0	0	0	0	0	2	0	0	0	0	0	0	6	8
Tamarack	0	0	0	0	0	0	0	0	0	52	0	0	0	0	0	0	0	0	52
Treed Bog	2003	0	0	0	0	0	0	0	0	0	0	0	0	0	0	0	0	0	2003
Upland Mixed Forest	0	0	0	0	0	0	0	0	0	20	22	0	0	0	0	0	0	0	42
Upland Spruce/Fir	0	0	0	0	0	0	0	0	0	0	11	0	0	0	0	0	0	0	11
Urban	22	0	0	0	0	0	0	0	0	0	0	0	0	0	0	0	0	0	22
Water	134	0	0	0	0	0	0	0	0	0	0	0	0	0	0	0	0	0	134
<b>Total</b>	<b>5476</b>	<b>0</b>	<b>34</b>	<b>0</b>	<b>0</b>	<b>26</b>	<b>0</b>	<b>0</b>	<b>0</b>	<b>417</b>	<b>659</b>	<b>89</b>	<b>0</b>	<b>0</b>	<b>0</b>	<b>0</b>	<b>0</b>	<b>26</b>	<b>6726</b>



## Report 2 – Treatment Summary

Newberry Mgt. Unit

Year of Entry: 2018

Acres of Harvest

Compartment 130

Total Compartment Acres: 6,730

Commercial Harvest -  
 Harvests with Site Condition - 70  
 Next Step Harvest - 0  
 Habitat Cut - 0

### Cover Type by Harvest Method

	Clearcut	Selection	Patch Clearcut	Seed Tree	Shelterwood	Thinning	Overstory Removal	Salvage	Other	Total Acres
Aspen	32	0	0	0	0	0	0	0	0	32
Northern Hardwood	0	0	0	0	6	0	0	0	0	6
Tamarack	10	0	0	0	0	0	0	0	0	10
Upland Mixed Forest	18	0	0	0	0	0	0	0	0	18
Upland Spruce/Fir	3	0	0	0	0	0	0	0	0	3
<b>Total</b>	<b>64</b>	<b>0</b>	<b>0</b>	<b>0</b>	<b>6</b>	<b>0</b>	<b>0</b>	<b>0</b>	<b>0</b>	<b>70</b>

### Proposed and Next Step Treatments by Method

	Harvest	Site Prep	Planting	Seeding	Burning	Pesticide	Monitoring	Other	Non-Forest Mgt.	Total Acres
Current	70	0	0	0	0	0	151	0	0	220
Next Step	0	0	0	0	0	0	70	0	0	70
<b>Total</b>	<b>70</b>	<b>0</b>	<b>0</b>	<b>0</b>	<b>0</b>	<b>0</b>	<b>220</b>	<b>0</b>	<b>0</b>	<b>290</b>



S t a n d	Treatment Name	Acres	Stand CoverType	Size Density	Stand Age	BA Range	Treatment Type	Treatment Method	Cover Type Objective	Age Structure	Approval Status
42	42130042-Monitor	115.3	6229 - Mixed lowland shrub	Nonstocked	0	Unspecified	Monitoring	Natural Regen (Intermediate)	6122 - Black Spruce	Even-Aged	Draft Field Boundary

**Habitat Cut: No****Site Condition:**Prescription Monitor stand for natural regen.Specs:Next StepTreatments:Acceptable Spruce with other associated lowland tree spp.Regen:OtherComment:Proposed Start Date: 10/01/2019

44	42130044-Monitor	19.7	6229 - Mixed lowland shrub	Nonstocked	0	Unspecified	Monitoring	Natural Regen (Intermediate)	6122 - Black Spruce	Even-Aged	Draft Field Boundary
----	------------------	------	----------------------------	------------	---	-------------	------------	------------------------------	---------------------	-----------	----------------------

**Habitat Cut: No****Site Condition:**Prescription Monitor stand for natural regen.Specs:Next StepTreatments:Acceptable Spruce and other associated lowland conifers.Regen:OtherComment:Proposed Start Date: 10/01/2019

46	42130046-Monitor	9.0	6229 - Mixed lowland shrub	Nonstocked	0	Unspecified	Monitoring	Natural Regen (Intermediate)	6122 - Black Spruce	Even-Aged	Draft Field Boundary
----	------------------	-----	----------------------------	------------	---	-------------	------------	------------------------------	---------------------	-----------	----------------------

**Habitat Cut: No****Site Condition:**Prescription Monitor stand for natural regen.Specs:Next StepTreatments:Acceptable Black spruce and other associated lowland conifers spp.Regen:OtherComment:Proposed Start Date: 10/01/2019

49	42130049-Monitor	2.5	622 - Lowland Shrub	Nonstocked	0	Unspecified	Monitoring	Natural Regen (Intermediate)	6122 - Black Spruce	Even-Aged	Draft Field Boundary
----	------------------	-----	---------------------	------------	---	-------------	------------	------------------------------	---------------------	-----------	----------------------

**Habitat Cut: No****Site Condition:**Prescription Monitor stand for natural regen.Specs:Next StepTreatments:Acceptable Black spruce and other associated lowland mixed conifer spp.Regen:OtherComment:Proposed Start Date: 10/01/2019



S t a n d	Treatment Name	Acres	Stand CoverType	Size Density	Stand Age	BA Range	Treatment Type	Treatment Method	Cover Type Objective	Age Structure	Approval Status
51	42130051-Monitor	4.4	6229 - Mixed lowland shrub	Nonstocked	0	Unspecified	Monitoring	Natural Regen (Intermediate)	6122 - Black Spruce	Even-Aged	Draft Field Boundary
<b>Habitat Cut: No</b>			<b>Site Condition:</b>								
<u>Prescription</u> Monitor stand for natural regen.											
<u>Specs:</u>											
<u>Next Step</u>											
<u>Treatments:</u>											
<u>Acceptable</u> Black spruce and other associated lowland conifers.											
<u>Regen:</u>											
<u>Other</u>											
<u>Comment:</u>											
<u>Proposed Start Date:</u> 10/01/2019											
96	42130096-Cut	4.0	4136 - Aspen, Mixed Conifer	Sawtimber Medium	87	1-50	Harvest	Clearcut	413 - Aspen	Even-Aged	Draft Field Boundary
<b>Habitat Cut: No</b>			<b>Site Condition: Blocked by Obstacle</b>								
<u>Prescription</u> Harvest if adjacent private landowner is treating their land. Cut all species, leaving no retention due to small acreage.											
<u>Specs:</u>											
<u>Next Step</u> Monitoring, Natural Regen (Re-Inventory)											
<u>Treatments:</u>											
<u>Acceptable</u> Mix of present species is acceptable.											
<u>Regen:</u>											
<u>Other</u> Very difficult, winter access only.											
<u>Comment:</u>											
<u>Proposed Start Date:</u> 10/01/2017											
99	42130099-Cut	5.4	4130 - Aspen	Sawtimber Well	87	81-110	Harvest	Clearcut	413 - Aspen	Even-Aged	Draft Field Boundary
<b>Habitat Cut: No</b>			<b>Site Condition: Blocked by Obstacle</b>								
<u>Prescription</u> Harvest if adjacent private landowner is treating their land. Cut all species, leaving no retention due to small acreage.											
<u>Specs:</u>											
<u>Next Step</u> Monitoring, Natural Regen (Re-Inventory)											
<u>Treatments:</u>											
<u>Acceptable</u> Mix of present species is acceptable.											
<u>Regen:</u>											
<u>Other</u> Very difficult, winter access only.											
<u>Comment:</u>											
<u>Proposed Start Date:</u> 10/01/2017											
101	42130101-Cut	10.4	6121 - Tamarack	Poletimber Medium	87	1-50	Harvest	Clearcut with Retention	6121 - Tamarack	Even-Aged	Draft Field Boundary
<b>Habitat Cut: No</b>			<b>Site Condition: Blocked by Obstacle</b>								
<u>Prescription</u> Harvest if adjacent private landowner is treating their land. Cut all species, leaving small patch retention amongst all stands.											
<u>Specs:</u>											
<u>Next Step</u> Monitoring, Natural Regen (Re-Inventory)											
<u>Treatments:</u>											
<u>Acceptable</u> Mix of present species is acceptable.											
<u>Regen:</u>											
<u>Other</u> Very difficult, winter access only.											
<u>Comment:</u>											
<u>Proposed Start Date:</u> 10/01/2017											



S t a n d	Treatment Name	Acres	Stand CoverType	Size Density	Stand Age	BA Range	Treatment Type	Treatment Method	Cover Type Objective	Age Structure	Approval Status
102	42130102-Cut	22.1	4136 - Aspen, Mixed Conifer	Sawtimber Well	87	51-80	Harvest	Clearcut with Retention	413 - Aspen	Even-Aged	Draft Field Boundary

**Habitat Cut: No**      **Site Condition: Blocked by Obstacle**

Prescription Harvest if adjacent private landowner is treating their land. Cut all species, leaving small patch retention amongst all stands. Leave any hemlock, if it exists.  
Specs:

Next Step Monitoring, Natural Regen (Re-Inventory)  
Treatments:

Acceptable Mix of present species is acceptable.  
Regen:

Other Very difficult, winter access only  
Comment:

Proposed Start Date: 10/01/2017

103	42130103-Cut	3.4	42340 - Upland Spruce/Fir	Poletimber Well	92	51-80	Harvest	Clearcut	42340 - Upland Spruce/Fir	Even-Aged	Draft Field Boundary
-----	--------------	-----	---------------------------	-----------------	----	-------	---------	----------	---------------------------	-----------	----------------------

**Habitat Cut: No**      **Site Condition: Blocked by Obstacle**

Prescription Harvest if adjacent private landowner is treating their land. Cut all species, leaving no retention due to small acreage.  
Specs:

Next Step Monitoring, Natural Regen (Re-Inventory)  
Treatments:

Acceptable Mix of present species is acceptable.  
Regen:

Other Very difficult, winter access only.  
Comment:

Proposed Start Date: 10/01/2017

104	42130104-Cut	18.3	4319 - Mixed Upland Forest	Poletimber Well	92	51-80	Harvest	Clearcut with Retention	4319 - Mixed Upland Forest	Even-Aged	Draft Field Boundary
-----	--------------	------	----------------------------	-----------------	----	-------	---------	-------------------------	----------------------------	-----------	----------------------

**Habitat Cut: No**      **Site Condition: Blocked by Obstacle**

Prescription Harvest if adjacent private landowner is treating their land. Cut all species, leaving small patch retention. Leave any hemlock, if it exists.  
Specs:

Next Step Monitoring, Natural Regen (Re-Inventory)  
Treatments:

Acceptable Mix of present species is acceptable.  
Regen:

Other Very difficult, winter access only.  
Comment:

Proposed Start Date: 10/01/2017

134	42130134-Cut	5.9	4119 - Mixed Northern Hardwoods	Sawtimber Well	87	81-110	Harvest	Shelterwood with Retention	4119 - Mixed Northern Hardwoods	Two-Aged	Draft Field Boundary
-----	--------------	-----	---------------------------------	----------------	----	--------	---------	----------------------------	---------------------------------	----------	----------------------

**Habitat Cut: No**      **Site Condition: Blocked by Obstacle**

Prescription Harvest if adjacent private landowner is treating their land. Try to promote light seeded species if present. Leave any hemlock, if it exists.  
Specs:

Next Step Monitoring, Natural Regen (Re-Inventory)  
Treatments:

Acceptable Mix of present species is acceptable.  
Regen:

Other Very difficult, winter access only.  
Comment:

Proposed Start Date: 10/01/2017

**Total Treatment Acreage Proposed: 220.4**

Mgt. Unit

Compartment: #Type!

Year of Entry:



## Report 5 – PROPOSED SPECIAL CONSERVATION AREA\* (SCA) DETAILS

\* This is a partial list of SCAs for this compartment. Not included are those areas identified under other Department initiatives (Natural Rivers, Deer Wintering Areas, etc.). Those will be identified in separate, future map and report products.

SCA Name	SCA Category	Detail Type	Recommendation	Acres
----------	--------------	-------------	----------------	-------

---

Comments

---





**Report 6 – EXISTING SPECIAL CONSERVATION AREA DETAILS**

\* This is a list of SCA's for this compartment along with a 1/4 mile buffer surrounding the compartment. Refer to the Special Conservation Area Map for locations of the below listed Conservation Areas.

ERA = Ecological Reference Area  
HCVA = High Conservation Value Area  
SCA = Special Conservation Area

Conservation Area	Type	Description
SCA	Cold Water Lake	A coldwater lake has temperature and dissolved oxygen conditions that allow naturally-reproduced or stocked trout populations and those of other coldwater fish species to persist from year to year. Suitable conditions for coldwater fishes may occur in Michigan lakes if they are relatively deep, have substantial groundwater inflows, or are located in colder (northern) areas of the state. Such lakes are established by Director's action and designated as trout resources by Fisheries Order 200.
SCA	Cold Water Stream	A coldwater stream has temperature and dissolved oxygen conditions that allow naturally-reproduced or stocked trout populations and those of other coldwater fish species (e.g., slimy sculpin) to persist from year to year. Coldwater streams in Michigan typically provide these conditions due to substantial contributions of groundwater to their stream flows. Such streams are established by Director's action and designated as trout resources by Fisheries Order 210.
SCA	Habitat Area	An area that provide some specific need for the life cycle of wildlife species, including State Wildlife Areas and Waterfowl Production Areas, deer wintering complexes in lowland conifer communities, grassland openings and savannas. Habitat areas are distinct from critical habitat designated for recovery of endangered or threatened species (such as Kirtland's warbler or piping plover areas) in that they are more general in nature, are not primarily associated with threatened or endangered species, and are not covered by species recovery plans that are developed in cooperation with Federal agencies.
SCA	Riparian Area	A transitional area between aquatic and terrestrial ecosystems in which the terrestrial ecosystem influences the aquatic ecosystem and vice-versa. Because of the unique conditions adjacent to lakes, streams and open water wetlands, riparian areas harbor a high diversity of plants and wildlife. Riparian communities are ecologically and socially significant in their effects on water quality and quantity, as well as aesthetics, habitat, bank stability, timber production, and their contribution to overall biodiversity.



	Level 4 Cover Type	Size Density	Acres	Stand Age	BA Range	General Comments:
5	6129 - Mixed Coniferous Lowland Forest	Sawtimber Medium	4.5	87	51-80	Stand is a mixed bag of species, mostly lowland conifer. Stand falls on a subtle ridge surrounded by lowland tag alder/marsh. Stand within floodplain of Hendrie River.
6	6129 - Mixed Coniferous Lowland Forest	Sawtimber Medium	11.9	87	51-80	Mixed bag of species. Some of the stand occurs along firm ground but most is amongst lowland tag alder. Difficult to access, old logging trails leading to the stand from PVT land to the east are essentially abandoned and growing in. Stand is within the floodplain of the Hendrie River.
7	4319 - Mixed Upland Forest	Sawtimber Well	19.8	87	81-110	Stand is variable, it mostly sits on the back of a narrow ridge paralleling the river. Variable with tree species and age classes, some trees are overmature, balsam is regenerating throughout stand and is decent quality. Red maple and paper birch is mostly large and overmature. Pockets of cedar in lower areas of stand. There is a 4-wheeler trail down the middle of ridge on the south end of the stand from a PVT camp.
8	6139 - Mixed Lowland Forest	Sawtimber Well	35.2	87	81-110	Poor quality hardwood. R. maple, y. birch and white pine overtops cedar, spruce, balsam and hemlock. Most of the the timber in here is overmature. Aspen scattered throughout stand in pockets here and there, it is old. Seasonally wet ground in here with tag alder inclusions throughout. B.fir is very thick in understory in many places of the stand. Difficult stand to access stand. There is an old logging road leading from PVT land to the east, it is now a 4-wheeler trail, road is nearly grown shut.
9	6119 - Mixed Lowland Deciduous Forest	Poletimber Medium	43.4	87	1-50	Low quality hardwoods - mostly r.maple with p.birch, y.birch along with some cedar, spruce, balsam, tamarack overtopping areas of thick b.fir regen, maple regen and tag alder. Some areas are mostly tag alder with a few scattered trees. Mixed bag of sizes and ages. Seasonally wet ground, difficult access.
10	6121 - Tamarack	Poletimber Medium	21.0	87	51-80	
11	6120 - Lowland Cedar	Sawtimber Well	50.3	97	111-140	Stand is similar to stand 13. Mostly cedar with overtopping tamarack component. Very little spruce, some p.birch and red maple in the n. end of stand.
12	6121 - Tamarack	Poletimber Well	21.3	87	81-110	
13	6120 - Lowland Cedar	Sawtimber Well	89.4	107	111-140	Stand is mostly comprised of cedar with overtopping tamarack mixed throughout. Spruce is lightly scattered. Understory is mostly open with little regen. Some large diametered cedar in here 14-18" as well as tamarack. Difficult stand to access with PVT land controlling the access to the east and the Hendrie River to the west. Stand was probably a deer yard in the past but no deer yarding in here at the present.
14	6119 - Mixed Lowland Deciduous Forest	Poletimber Medium	49.8	87	1-50	Ugly stand, mostly lowland hardwoods with a mix of lowland conifers. Most timber is submerchantable.
16	6119 - Mixed Lowland Deciduous Forest	Poletimber Poor	22.3	87	1-50	Low quality lowland hardwoods/conifers mixed with tag alder.



	Level 4 Cover Type	Size Density	Acres	Stand Age	BA Range	General Comments:
17	4199 - Other Mixed Upland Deciduous	Sawtimber Well	4.7	87	81-110	Mixed bag of poor quality hardwood and lowland conifer. Stand sits on a subtle ridge paralleling the river. Similar to stand 7. Some trees are overmature, balsam is regenerating. R.maple and paper birch is mostly large and overmature..
25	42220 - Natural Jack Pine	Sawtimber Well	3.9	87	51-80	Old jack pine on the back of a subtle sand ridge surrounded by marsh. A few smaller JP islands to the north and northwest not typed out - too small. J. pine DBH ranges from 10-16" 4-6 sticks tall. Some scattered p. birch in stand.
31	6122 - Black Spruce	Poletimber Medium	13.6	87	51-80	
32	6122 - Black Spruce	Poletimber Medium	3.8	87	51-80	Small "knobs" of aspen with spruce fringes surrounded by treed bog/marsh.
33	6122 - Black Spruce	Poletimber Poor	35.2	92	1-50	Suppressed spruce, most trees are 1-3"DBH although there are a few that are close to 5"DBH. Small subtle ridge inclusion.
35	6122 - Black Spruce	Poletimber Medium	72.1	92	51-80	Spruce is marginal in regards to merchantability, there are some that are 1-3 sticks tall 4-8"DBH and several that are 3-5" with no merchantable sticks. Scattered tamarack in stand. Spruce is thick in places.
39	6122 - Black Spruce	Poletimber Medium	29.1	87	1-50	Spruce in stand is small diametered, many trees are submerchantable due to small diameter size. Thick with spruce in most places but the trees are like flagpoles with B.A.'s ranging from 30-80, DBH is 2-7", 20-40' tall.
40	6122 - Black Spruce	Poletimber Medium	29.9	87	1-50	Spruce in stand is small diametered, many trees are submerchantable due to small diameter size. Thick with spruce in most places but the trees are like flagpoles with B.A.'s ranging from 30-80, DBH is 2-7", 20-40' tall.
41	6122 - Black Spruce	Poletimber Medium	19.5	87	1-50	Trees are small diametered, barely merchantable. Many trees are submerchantable, 2-7"DBH, BA's are 10-70, and heights are approx. 20-40' tall. More treed bog like in some places in stand.
48	6122 - Black Spruce	Sapling Poor	18.6	90	Unspecified	Scattered suppressed/submerchantable spruce and tamarack in low/wet ground. Tag alder/leatherleaf ground cover.
50	6122 - Black Spruce	Poletimber Poor	35.4	90	1-50	Treed bog, scattered/suppressed/submerchantable spruce and tamarack. Ground cover is mostly tag alder/willow and leatherleaf. Trees are scattered and patchy, small diametered and short. More submerchantable trees than merchantable ones. Low/wet ground.
57	6122 - Black Spruce	Poletimber Poor	8.3	97	1-50	Small diametered, short black spruce. Most trees are sub merchantable. Trees are thick in places, just small. 10-30' tall, 2-5"DBH.
58	6122 - Black Spruce	Poletimber Poor	16.4	97	1-50	Small diametered, short black spruce. Most trees are sub merchantable. Trees are thick in places, just small. 10-30' tall, 2-5"DBH.



	Level 4 Cover Type	Size Density	Acres	Stand Age	BA Range	General Comments:
60	6122 - Black Spruce	Poletimber Well	8.3	90	51-80	Spruce with tamarack mixed throughout. A few scattered white pine and aspen.
63	4130 - Aspen	Poletimber Medium	4.2	87	1-50	Small ridge/island of timber in the middle of lowland type. Aspen is dying out.
68	4130 - Aspen	Poletimber Medium	4.7	87	1-50	2-5 stick aspen, scattered spruce and tamarack. Island of timber amongst lowland.
72	4130 - Aspen	Poletimber Well	3.2	82	51-80	Subtle knob surrounded by tag alder. Cherry present.
73	4319 - Mixed Upland Forest	Poletimber Medium	4.4	92	1-50	2-5 stick spruce, 1-4 stick aspen, some tamarack, balsam present. Stand is an island amongst lowland.
75	6122 - Black Spruce	Poletimber Poor	9.9	97	1-50	Small diametered, short spruce. Most trees are submerchantable. Trees are thick in places but small. 10-30' tall, 2-5"DBH.
77	6122 - Black Spruce	Sapling Poor	255.5	97	Unspecified	Suppressed spruce 10-25' tall, 1'3"DBH. No merchantability. Some suppressed tamarack mixed in as well.
79	6122 - Black Spruce	Sapling Well	5.4	87	1-50	Trees are small diametered, barely merchantable with diameter/height being too small. More of a treed bog in some places. Trees are thick in places, just small.
80	6122 - Black Spruce	Sapling Medium	9.0	87	1-50	Trees are small diametered, barely merchantable with diameter/height being too small. More of a treed bog in some places. Trees are thick in places, just small.
81	6119 - Mixed Lowland Deciduous Forest	Sawtimber Medium	9.9	93	51-80	Mixed bag of lowland hardwood species, red maple, black/green ash, some elm and a few large swamp white oak.
93	6122 - Black Spruce	Poletimber Well	4.9	92	51-80	Subtle ridge of timber (black spruce, tamarack with white birch). Stand is an island amongst lowland types.
95	6122 - Black Spruce	Poletimber Medium	6.4	87	1-50	
96	4136 - Aspen, Mixed Conifer	Sawtimber Medium	4.0	87	1-50	Aspen is mature and dying out, becoming scattered. Thick regen that is mostly red maple, p. birch, balsam and spruce. If not harvested, the stand will probably convert to lowland hardwoods/conifers.
97	6128 - Lowland Coniferous, Mixed Deciduous	Sapling Medium	8.0	42	Unspecified	Mixed bag of lowland hardwood/lowland conifer species. Very thick in some places. Some overmature red maple in the overstory, scattered.
98	6139 - Mixed Lowland Forest	Sapling Medium	18.3	42	Unspecified	Mixed bag of lowland hardwood/lowland conifer species. Very thick in some places; bog like in other places. Some overmature red maple in the overstory, scattered. Includes a small aspen island on east side.



	Level 4 Cover Type	Size Density	Acres	Stand Age	BA Range	General Comments:
99	4130 - Aspen	Sawtimber Well	5.4	87	81-110	Decent aspen, getting overmature.
100	6129 - Mixed Coniferous Lowland Forest	Poletimber Poor	7.2	97	1-50	Lowland type - brush with scattered trees. Treed bog/ marshlike in parts of the stand.
101	6121 - Tamarack	Poletimber Medium	10.4	87	1-50	
102	4136 - Aspen, Mixed Conifer	Sawtimber Well	22.1	87	51-80	Mixed bag stand. Spruce, tamarack present throughout. Aspen overtops conifers where it occurs. Birch present as well as red maple. Regen is mostly balsam fir, spruce, and red maple, thick in places.
103	42340 - Upland Spruce/Fir	Poletimber Well	3.4	92	51-80	Stand falls on a subtle ridge. Aspen is getting old and dying out.
104	4319 - Mixed Upland Forest	Poletimber Well	18.3	92	51-80	Mixed bag stand (black spruce and aspen, with paper birch, tamarack and red maple). Birch and aspen is beginning to die out. Subtle ridge on far west end of the stand.
108	4191 - Mixed Upland Deciduous with Conifer	Sawtimber Well	50.1	97	81-110	Mixed bag stand of tree species. Much of the overtopping timber is overmature and defective and/or dying out. Scattered large white pine throughout stand (quality trees). Hemlock groves mixed throughout. B.fir, red maple, birch regen is prevalent. Some white pine regen. BA ranges from 30-150.
109	4191 - Mixed Upland Deciduous with Conifer	Sawtimber Well	6.1	97	81-110	Mixed bag stand. Overstory of r. maple, y. birch, p. birch. Many of the overstory trees are old and defective. A few scattered large white pine. Hemlock and cedar scattered here and there. White spruce is tall and has quality. B. fir is dog hair thick throughout and is becoming merchantable, approx. 2-5"DBH.
110	6122 - Black Spruce	Poletimber Poor	3.6	87	Unspecified	Stand is mostly treed bog. Scattered spruce, white pine, cedar and tamarack. Leatherleaf and tag alder on the ground. Low ground.
111	4139 - Aspen, Mixed Deciduous	Sapling Well	11.1	11	Immature	Stand was harvested in Feb. 2006 under negotiated contract with Rich Brow (TS#007-06-02). White pine, cedar, hemlock, yellow birch was left as residual. Red maple/balsam fir seedlings/saplings still here as well. Rich harvested the PVT land to the east of this stand in the winter of 04-05'. They left white pine, hemlock, some y. birch, some red maple and some p.birch. Mostly harvested aspen, spruce, balsam and some log sized red maple, yellow birch.
112	6119 - Mixed Lowland Deciduous Forest	Sawtimber Medium	4.1	97	1-50	Mixed bag stand of lowland hardwoods/lowland conifers. Thick regen of red maple, black ash, elm, b. fir. Low wet ground, tag alder throughout. Some swamp white oak in overstory. Most of the overstory timber is lower quality.



Level 4 Cover Type	Size Density	Acres	Stand Age	BA Range	General Comments:
4139 - Aspen, Mixed Deciduous	Sapling Well	5.3	11	Immature	Stand was harvested in Feb. 2006 under negotiated contract with Rich Brow (TS#007-06-02). White pine, cedar, hemlock, yellow birch was left as residual. Red maple/balsam fir seedlings/saplings still here as well. Rich harvested the PVT land to the east of this stand in the winter of 04-05'. They left white pine, hemlock, some y. birch, some red maple and some p.birch. Mostly harvested aspen, spruce, balsam and some log sized red maple, yellow birch.
4191 - Mixed Upland Deciduous with Conifer	Sawtimber Well	10.1	97	81-110	Stand is variable. It sits mostly on firm ground with a few low spots within stand. Large white pine in places (35"+DBH). Lowland hardwood/conifer in low areas with maple/hemlock/white pine on the higher ground. BA ranges from 30-150 across the stand. Thick balsam fir understory in places. There is was a building/dock trespass discovered in 1994 in this stand, which was resolved. More details in the compartment file.
4130 - Aspen	Sapling Well	6.6	15	Immature	Stand was cut in Nov. 2001, TS#037-01-03. Good regen coming in now, mostly aspen with some red maple.
42320 - Upland Spruce	Poletimber Well	7.2	90	51-80	Subtle ridge with moslty black spruce and tamarack. Some aspen and birch present. Small knob on the west end of stand that has sawlog sized red pine on it (~1 acre). Small bog in center of stand. Difficult to access.
6129 - Mixed Coniferous Lowland Forest	Poletimber Medium	7.7	90	1-50	Low quality stand. Lowland tree species of tamarack, cedar, spruce growing in low ground. West end of stand has mixed bag of species regenerating - b. fir, birch. Tamarack, - thick in places. Sparse understory on the east end, more lowland brush. Cedar, birch aspen present in the stand.
6129 - Mixed Coniferous Lowland Forest	Poletimber Medium	7.6	90	1-50	Stand is mostly growing in low ground with very subtle ridges supporting tree growth. Mixed bag of regen on the more "upland" areas - mostly b. fir with spruce, tamarack, birch, red maple - thick in places. Aspen, birch, cedar, hemlock present. Low quality stand.
4136 - Aspen, Mixed Conifer	Sapling Medium	10.9	12	Immature	Subtle ridge supporting trees, cut in 2004-2005 when logger cut adjacent PVT lands. North end looks to be mostly aspen, gradiating to semi-open ground in the middle, and mixed aspen, red maple, spruce, cedar and white pine in the southern portion. Some fingers of older spruce left uncut. Small bog in the northern portion of the stand.
6129 - Mixed Coniferous Lowland Forest	Poletimber Poor	4.4	87	1-50	Low tag alder pocket, lowland conifer species of spruce, balsam, cedar, white pine scattered throughout the low. Tag alder is prevalent. Some scattered red maple and yellow birch.
6117 - Lowland Deciduous, Mixed Coniferous	Poletimber Medium	11.6	87	51-80	Mix of red maple, paper birch, spruce, cedar and some tamarack. Clumpy red maple, small, poor quality. Birch is dying out. Tag alder understory.
6113 - Lowland Maple	Sawtimber Medium	2.9	90	1-50	Stand flanks the Hendrie River, some hardwood regen in places. Tag alder throughout most of the stand. Low ground within the floodplain of the river. Ash present - black/green.

S  
t  
a  
n  
d

Newberry Mgt. Unit

## Report 7 – Forested Stands

Compartment: 130  
Year of Entry: 2018

	Level 4 Cover Type	Size Density	Acres	Stand Age	BA Range	General Comments:
133	6122 - Black Spruce	Poletimber Well	11.0	92	81-110	Stand is mostly spruce with a mix of tamarack, cedar and paper birch. Decent quality, difficult to access. Timber mature.
134	4119 - Mixed Northern Hardwoods	Sawtimber Well	5.9	87	81-110	Stand is mostly red maple that is poor quality. Regen is thick with balsam fir and red maple throughout most of the stand.
135	6113 - Lowland Maple	Poletimber Poor	4.2	92	1-50	Stand is in the floodplain of the Tahquamenon River. Stand occurs against the edge of upland type. Mostly red maple, very poor quality.
136	4119 - Mixed Northern Hardwoods	Poletimber Well	2.3	92	51-80	Small, poor quality maple stand that was not treated with adjacent aspen stand. This stand is part of a larger stand to the north on PVT land. Mostly upland type with lowland pockets mixed in. Mixed bag of species. Ash, red maple, yellow birch, elm reproduction along with balsam fir. Cedar present.



Stand	Cover Type	Acres	Managed Site	General Comments:
1	500 - Water	4.5	No	Tahquamenon River
2	622 - Lowland Shrub	20.6	No	Leatherleaf, grasses, small tag alder, willow along the river. Mostly open. Some scattered trees - green/black ash as well as maple. Tahquamenon River flood plain.
3	500 - Water	9.6	No	Hendrie River
4	622 - Lowland Shrub	50.6	No	Lowland brush/marsh flanking the Hendrie River.
15	6225 - Bog	29.9	No	Marsh lowland with scattered tree species.
18	500 - Water	62.7	No	Hendrie River and crane dug ditch.
19	6225 - Bog	8.1	No	Scattered suppressed spruce/tamarack. Very open in some places. Trees are really scattered with thick leatherleaf ground cover.
20	622 - Lowland Shrub	48.1	No	Lowland brush with scattered marshy areas mixed throughout. Includes small narrow red pine island.
21	622 - Lowland Shrub	207.5	No	Lowland brush with scattered marshy areas mixed throughout.
22	622 - Lowland Shrub	97.9	No	Lowland brush with scattered marshy areas mixed throughout.
23	622 - Lowland Shrub	15.5	No	Lowland brush with scattered marshy areas mixed throughout.
24	622 - Lowland Shrub	343.7	No	Lowland brush with scattered marshy areas mixed throughout.
34	6225 - Bog	2.2	No	
36	6224 - Treed Bog	570.9	No	Suppressed tamarack/spruce trees. There are places with jack pine saplings scattered in places (Sec24 & 25). Leatherleaf ground cover. Several small treed island inclusions; mainly spruce with some scattered jack pine.
37	6224 - Treed Bog	115.9	No	Treed bog, mostly tamarack with some spruce. Some pockets of tamarack that are merchantable, 2-4 sticks tall. These are isolated islands throughout this treed bog stand that are too small/scattered to type out. These larger trees are dead and dying.
38	6224 - Treed Bog	479.9	No	Treed bog with mostly suppressed spruce/tamarack. Some jack pine along the east edge of stand. Some areas are thicker with suppressed trees and some areas are more open with scattered trees.





Stand	Cover Type	Acres	Managed Site	General Comments:
42	6229 - Mixed lowland shrub	115.4		TSale#420110801. TCR 4/14/15. There was sapling sized/very small pole sized spruce left as retention in stand, mostly in the western half of the stand. Accessed through PVT land.
44	6229 - Mixed lowland shrub	20.1		Better quality spruce than adjacent stand (stand 46) prior to cutting. TSale#420110801 Soo Junction Spruce TCR 4/14/15. Most of the scattered tree retention died after sale was cut. Accessed through PVT land.
45	622 - Lowland Shrub	12.9	No	Stand is a marsh/lowland brush type with scattered suppressed tamarack and spruce.
46	6229 - Mixed lowland shrub	9.0		Was decent quality, but not quite as good as the adjacent stand (stand 44) prior to cutting. TSale#420110801 - Soo Junction Spruce. TCR 4/14/15. Most of the scattered tree retention died after sale was cut. Accessed through PVT land.
47	6224 - Treed Bog	10.1	No	Treed bog. Suppressed/scattered, submerchantable spruce and tamarack. Ground cover is tag alder/willow and leatherleaf.
49	622 - Lowland Shrub	2.5		TSale#420110801 Soo Junction Spruce TCR 4/14/15. Part of larger stand to the south in C-132. Accessed through PVT land.
51	6229 - Mixed lowland shrub	4.4		TSale#420110801 Soo Junction Spruce TCR 4/14/15. Accessed through PVT land.
52	6224 - Treed Bog	14.9	No	Stand is a treed bog. Mostly suppressed, submerchantable tamarack with spruce mixed in. Stand is thick with trees in places, 5-20' tall and 1-3" DBH. Tag alder understory. Low/wet ground.
53	6224 - Treed Bog	5.9	No	Scattered suppressed/submerchantable spruce and tamarack in low/wet ground. Tag alder/leatherleaf ground cover.
54	123 - Other High Intensity Urban	22.2	No	Canadian National Railroad Grade.
55	6224 - Treed Bog	25.2	No	Treed bog/marsh. Toonerville Trolley Railroad Grade runs across this stand.
56	6225 - Bog	677.7	No	Stand is mostly a leatherleaf bog with stunted tamarack and spruce 2-5' tall scattered throughout.
59	6224 - Treed Bog	121.0	No	Suppressed spruce 10-25' tall, 1-3"DBH. No merchantability. Some tamarack mixed in also.
61	6220 - Alder/willow	23.6	No	Stand is mostly willow brush/tag alder growing in marsh lowland. Small ridge of timber in the NE corner, too small to type out.
62	6220 - Alder/willow	5.3	No	Stand is mostly willow brush/tag alder growing in marsh lowland.



Stand	Cover Type	Acres	Managed Site	General Comments:
64	500 - Water	1.4	No	E. Branch Sage River.
65	500 - Water	1.0	No	E. Branch Sage River.
76	6225 - Bog	610.2	No	Scattered suppressed spruce/tamarack. Very open in some places. Trees are really scattered with thick leatherleaf ground cover.
78	6224 - Treed Bog	70.8	No	Suppressed spruce 10-25' tall, 1-3" DBH. No merchantability. Some suppressed tamarack mixed in as well.
82	6229 - Mixed lowland shrub	566.6	No	Lowland brush - tag alder and willow. Open marshy area mixed throughout the lowland brush. Includes several small islands of timber scattered within stand.
83	6229 - Mixed lowland shrub	283.5	No	Stand is seasonally flooded (spring). Lowland brush - tag alder and willow. Open marshy area mixed throughout the lowland brush.
84	622 - Lowland Shrub	12.6	No	Stand falls between the original riverbed of the West Branch Sage and the crane dug ditch. Stand is seasonally flooded (spring). Lowland brush with open marshy areas mixed in.
85	622 - Lowland Shrub	3.6	No	Stand falls between the original riverbed of the West Branch Sage and the crane dug ditch. Stand is seasonally flooded (spring). Lowland brush with open marshy areas mixed in.
86	629 - Mixed non-forested wetland	1.4	No	Stand falls between the original riverbed of the West Branch Sage and the crane dug ditch. Stand is seasonally flooded (spring). Lowland brush with open marshy areas mixed in.
87	629 - Mixed non-forested wetland	1.2	No	Stand falls between the original riverbed of the West Branch Sage and the crane dug ditch. Stand is seasonally flooded (spring). Lowland brush with open marshy areas mixed in.
88	629 - Mixed non-forested wetland	2.9	No	Stand falls between the original riverbed of the West Branch Sage and the crane dug ditch. Stand is seasonally flooded (spring). Lowland brush with open marshy areas mixed in.
89	629 - Mixed non-forested wetland	2.3	No	Stand falls between the original riverbed of the West Branch Sage and the crane dug ditch. Stand is seasonally flooded (spring). Lowland brush with open marshy areas mixed in.
90	629 - Mixed non-forested wetland	6.5	No	Stand falls between the original riverbed of the West Branch Sage and the crane dug ditch. Stand is seasonally flooded (spring). Lowland brush with open marshy areas mixed in.
91	622 - Lowland Shrub	9.0	No	Stand falls between the original riverbed of the West Branch Sage and the crane dug ditch. Stand is seasonally flooded (spring). Lowland brush with open marshy areas mixed in.



Stand	Cover Type	Acres	Managed Site	General Comments:
92	500 - Water	35.6	No	West Branch of the Sage River and crane dug ditch.
94	6239 - Mixed Emergent Wetland	34.5	No	Stand is marsh/lowland brush. Cat-tails and tag alder. Scattered tamarack that is old and dying (some are diseased with eastern larch beetle). Suppressed spruce/balsam around as well. Old beaver house on the west end of stand.
105	6224 - Treed Bog	1.9	No	Suppressed spruce/tamarack.
106	6225 - Bog	15.2	No	Marsh lowland.
116	622 - Lowland Shrub	2.0	No	Stand is lowland type that is seasonally wet. It is a "drain" that leads from a lowland treed bog/marsh type to the Tahquamenon River.
117	6229 - Mixed lowland shrub	13.3	No	Leatherleaf, grasses, small tag alder along the river. Mostly open. Some scattered green/black ash as well as some red maple and swamp white oak (20"+ DBH).
118	6229 - Mixed lowland shrub	36.8	No	Leatherleaf, grasses, small tag alder along the river. Mostly open. Some scattered green/black ash as well as some red maple and swamp white oak.
119	500 - Water	14.3	No	Tahquamenon River.
125	6224 - Treed Bog	47.6	No	Suppressed tamarack and spruce, some balsam and cedar. Some areas look more like a L or N type than a D type.
126	6229 - Mixed lowland shrub	19.3	No	Leatherleaf, grasses, small tag alder along the river. Mostly open. Some scattered green/black ash as well as some red maple and swamp white oak.
127	500 - Water	4.8	No	Tahquamenon River.
130	6224 - Treed Bog	40.0	No	Treed bog with mostly suppressed spruce/tamarack. Some jack pine along the east edge of stand. Some areas are thicker with suppressed trees and some areas are more open with scattered trees.
137	622 - Lowland Shrub	1.1	No	Lowland brush with scattered marshy areas mixed throughout.
138	6224 - Treed Bog	147.1	No	Scattered suppressed spruce/tamarack. More trees in this treed bog stand and not as open as stand 76. Leatherleaf ground cover.
139	6224 - Treed Bog	351.4	No	Scattered suppressed spruce/tamarack. More trees in this treed bog stand and not as open as stand 76. Leatherleaf ground cover.