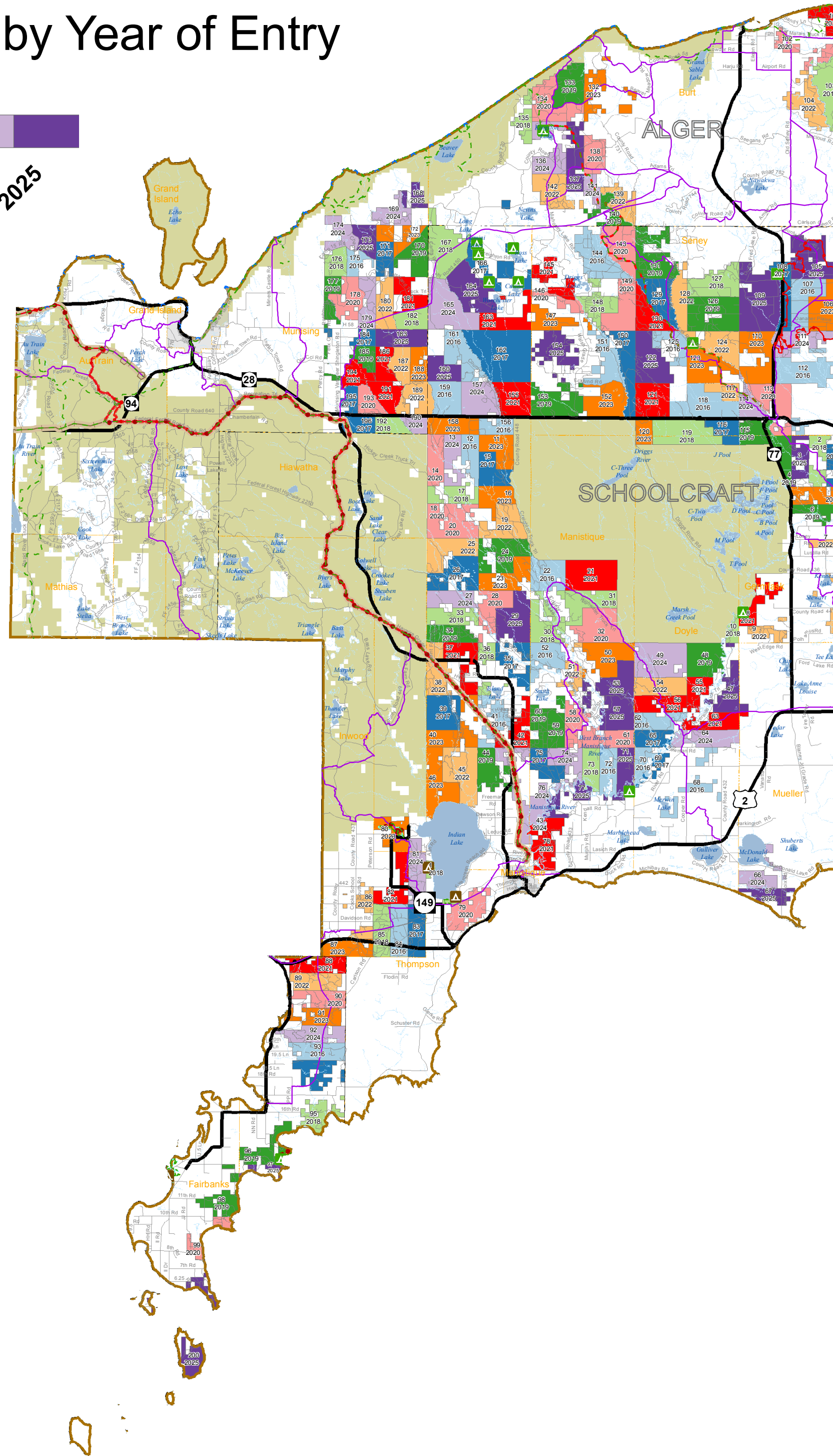
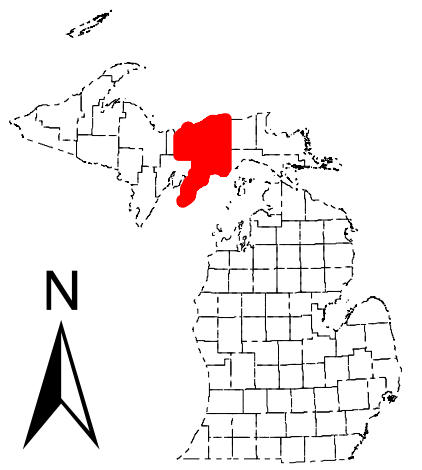
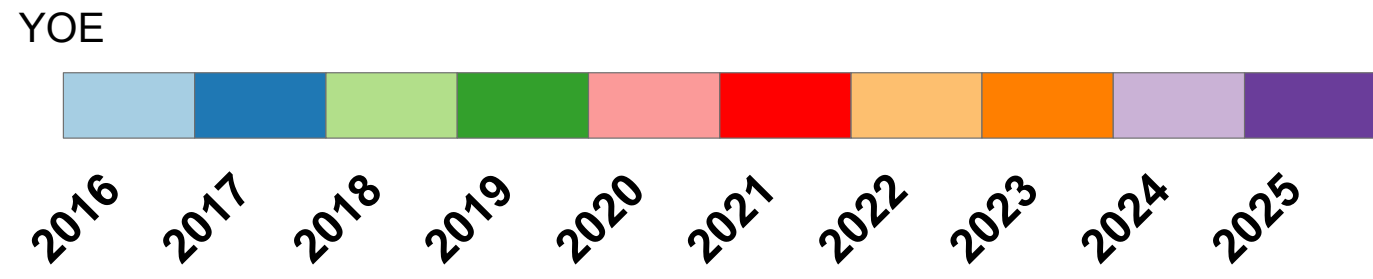


Shingleton Management Unit State Forest Compartments by Year of Entry



Legend

- State Forest Campground
- State Park Campgrounds
- Designated Water Trails
- Designated Hiking Trails
- Designated Bicycle Trails
- Designated Equestrian Trails
- Designated Ski Trails
- Designated Snowshoe Trails
- ORV License & Trail Permit
- Designated ATV Trails
- Designated ORV Routes
- Designated Snowmobile Trails
- Designated Railtrail
- Highway
- Roads
- Streams
- Counties
- Lakes and Rivers
- Cities
- Townships
- Federal Land

$$\frac{58}{2016} = \frac{\text{Compartment Number}}{\text{Year of Entry}}$$

Year of Entry (YOE) represents the fiscal year treatments will be initiated. Treatment decisions are made approximately 1-2 years before the Year of Entry. Example: For a 2010 YOE compartment, a treatment decision is made in the calendar year of 2008.

